



mig A DIY & LIFESTYLE BRAND

WOMEN'S CAFTAN IN TWO LENGTHS												Easy
Suggested Fabrics: Batiks, Charmeuse, Cotton Lawn, Cotton Blends, Crepe de Chine, Gauze, Silky Types, Voile. Interfacing: Lightweight Fusible.												
Notions: A,B: 1½yds. (1.5m) of ¼" (6mm) elastic.												
Sizes	20W	22W	24W	26W	28W	30W	32W	34W	36W	38W		
European	46	48	50	52	54	56	58	60	62	64		
BODY MEASUREMENTS: Select pattern size based on body measurements												
Bust	42	44	46	48	50	52	54	56	58	60	Ins.	
Waist	35	37	39	41½	44	46½	49	51½	53	54½	"	
Hip-9" below waist	44	46	48	50	52	54	56	58	60	62	"	
Back-neck to waist	17½	17	17½	17½	17½	17½	18	18½	18½	18½	"	
Interfacing A,B												
	20"- ¾ yd.											
Caftan A	60**	2"	2"	2½	2½	2½	2½	2½	2½	3	Yds.	
Caftan B	60**	4"	4½	4½	4½	4½	4½	4½	4½	4½	"	
FINISHED GARMENT MEASUREMENTS (Includes Design and Wearing Ease)												
A Bust	42½	44½	46½	48½	50½	52½	54½	56½	58½	60½	Ins.	
B Bust	48	50	52	54	56	58	60	62	64	66	"	
A,B Waist	42½	44½	46½	48½	50½	52½	54½	56½	58½	60½	"	
A,B Hip	49	51	53	55	57	59	61	63	65	67	"	
Width, lower edge												
Caftan A	55½	57½	59½	61½	63½	65½	67½	69½	71½	73½	Ins.	
Caftan B	72	74	76	78	80	82	84	86	88	90	"	
Finished back length from base of neck												
Caftan A	35½	35½	35½	36	36¼	36½	36¾	37	37¼	37½	Ins.	
Caftan B	59½	59½	59½	60	60¼	60½	60¾	61	61¼	61½	"	

*with nap **without nap

Facile

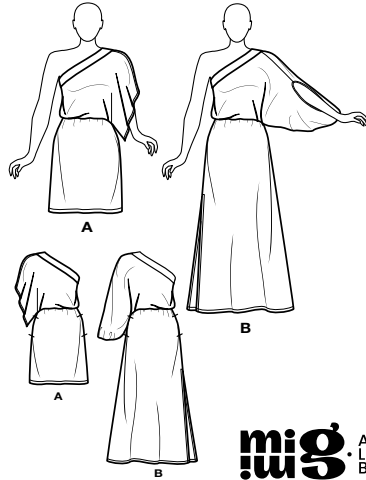
CAFTAN EN DEUX LONGUEURS POUR FEMMES												
Tissus Conseillés: Batiks, Charmeuse, Linon de coton, Cotonnades, Crêpe de chine, Gaze, Tissus soyeux, Voile. Entoilage: Thermocollant léger.												
Mercerie: A,B: 1.5m d'élastique de 6mm.												
Tailles	20W	22W	24W	26W	28W	30W	32W	34W	36W	38W		
Françaises	48	50	52	54	56	58	60	62	64	66		
Européen	46	48	50	52	54	56	58	60	62	64		
MESURES DU CORPS: Choisissez la taille du patron basée sur les mesures du corps												
Poitrine	107	112	117	122	127	132	137	142	147	152	cm	
Taille	89	94	99	105	112	118	124	130	134	138	"	
Hanches (23cm au-dessous de la taille)												
	112	117	122	127	132	137	142	147	152	157	cm	
Dos du cou à la taille	44	44	44.5	45	45	45.5	46	46	46.5	47	"	
Entoilage A,B												
	51cm- 0.8m											
Caftan A	150cm*	2.0	2.2	2.2	2.3	2.4	2.6	2.7	2.7	2.7	2.8	m
Caftan B	150cm*	3.8	3.9	3.9	3.9	3.9	4.0	4.2	4.2	4.3	4.3	"
MESURES DES VÊTEMENTS FINI (Motif et aisance de port compris)												
A Poitrine	108	113	118	123	128	133	138	144	149	154	cm	
B Poitrine	122	127	132	137	142	147	152	157	25	25	"	
A,B Taille	108	113	118	123	128	133	138	144	149	154	"	
A,B Hanches	124	130	135	140	145	150	155	160	165	170	"	
Largeur à l'ourlet												
Caftan A	141	146	151	156	161	166	171	177	182	187	"	
Caftan B	183	188	193	198	203	208	213	218	224	229	"	
Longueur finie – dos, votre nuque à l'ourlet												
Caftan A	90	90	91	91	92	93	93	94	95	95	cm	
Caftan B	150	151	152	152	153	154	154	155	156	156	"	

*avec sens **sans sens



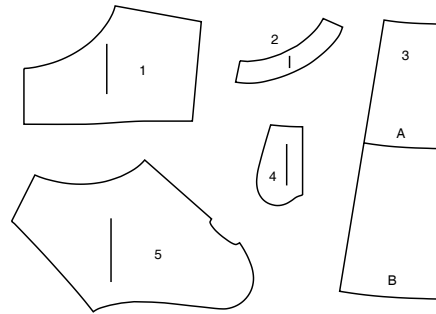
Simplicity®

Thank you for purchasing this Simplicity pattern.
We made every effort to provide you with a high quality product.



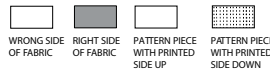
miig A DIY & LIFESTYLE BRAND

5 PIECES



- 1 BODICE FRONT AND BACK - A
2 FRONT AND BACK BAND - A,B
3 SKIRT FRONT AND BACK - A,B
4 POCKET - A,B
5 BODICE FRONT AND BACK - B

Cutting Layouts

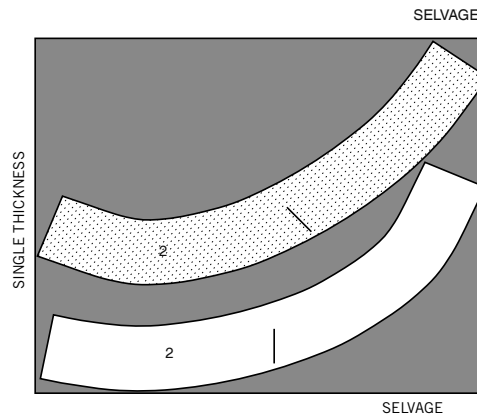


POSITION OF PATTERN PIECES MAY VARY
SLIGHTLY ACCORDING TO YOUR PATTERN SIZE

INTERFACING A,B

USE PIECE 2

20 (51CM)
ALL SIZES



General Directions

The Pattern

SYMBOLS

- ↔ GRAIN LINE Place on straight grain of fabric parallel to selvage
- ↓ PLACE SOLID LINE on fold of fabric.
- CENTER FRONT OR BACK of garment.
- ▽ NOTCHES
- DOTS
- CUTTING LINE
- == LENGTHEN OR SHORTEN LINES

SEAM ALLOWANCE: 5/8" (1.5cm) unless otherwise stated is included but not printed on MULTI-SIZE PATTERNS. Mark your size with colored felt tip pen. See chart on tissue for how to use MULTI-SIZE PATTERNS.

ADJUST IF NEEDED

Make adjustments before placing pattern on fabric.

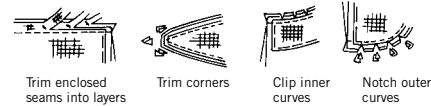
TO LENGTHEN:
Cut pattern between lengthen or shorten lines. Spread pattern evenly, the amount needed and tape to paper.

TO SHORTEN:
At lengthen or shorten lines, make an even pleat taking up amount needed. Tape in place.

When lengthen or shorten lines are not given, make adjustments at lower edge of pattern.

Sewing

- SEW garment following **Sewing Directions**.
- PIN or machine-baste seams matching notches.
- STITCH 5/8" (1.5 cm) seams unless otherwise stated.
- PRESS seams open unless otherwise indicated clipping when necessary so seams will lie flat.
- TRIM seams to reduce bulk, as shown below.



Cutting/Marking

BEFORE CUTTING:

PRESS pattern pieces with a warm dry iron. PRE-SHRINK fabric by pre-washing washables or steam-pressing non-washables.

CIRCLE your cutting layout.

PIN pattern to fabric as shown in Cutting Layouts.

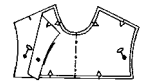
- FOR DOUBLE THICKNESS: Fold fabric with RIGHT sides together.
- FOR SINGLE THICKNESS: Place fabric RIGHT side up.
- FOR PILE, SHADED OR ONE WAY DESIGN FABRICS: Use "with nap" layouts

AFTER CUTTING:

Transfer markings to WRONG side of fabric before removing pattern. Use pin and chalk method or dressmaker's tracing paper and wheel.

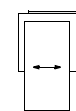
To Quick Mark:

- Snip edge of fabric to mark notches, ends of fold lines and center lines.
- Pin mark dots.

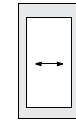


SPECIAL CUTTING NOTES

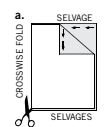
★ If layout shows a piece extending past fold, cut out all pieces except piece that extends.



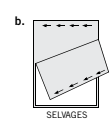
Open out fabric to single thickness. Cut extending piece on RIGHT side of fabric in position shown.



* Mark small arrows along both selvages indicating direction of nap or design. Fold fabric crosswise with RIGHT sides together, and cut along fold (a).



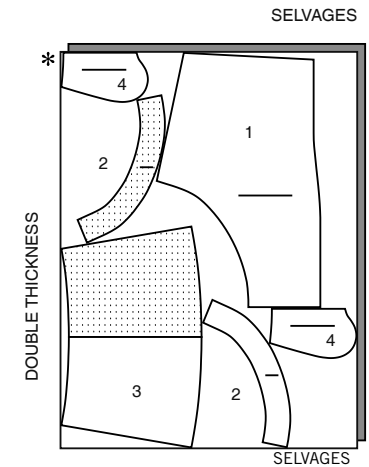
Turn one fabric layer around so arrows on both layers go in the same direction. Place RIGHT sides together (b).



CAFTAN A

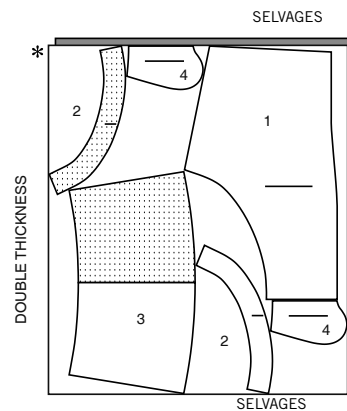
USE PIECES 1 2 3 4

60" (150CM)
WITH NAP
SIZES 20W 22W 24W 26W 28W



CUTTING LAYOUTS CONTINUED ON PAGE 2

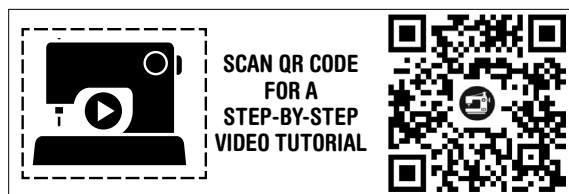
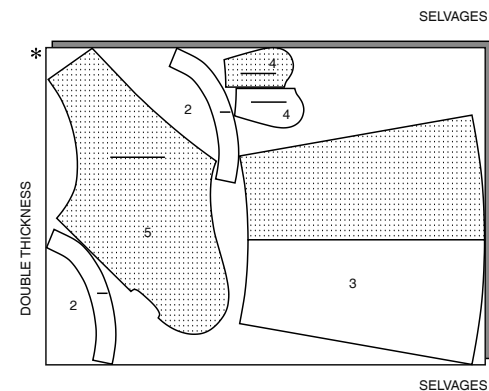
60" (150CM)
WITH NAP
SIZES 30W 32W 34W 36W 38W



CAFTAN B

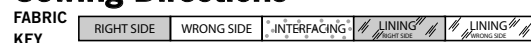
USE PIECES 2 3 4 5

60" (150CM)
WITH NAP
ALL SIZES



Congratulations on purchasing a Mimi G for Simplicity Sew Along Pattern. Please scan the QR code to link to the Sew Along video for this pattern, hosted by Mimi G. This video features step by step instructions and helpful pattern insight. Enjoy!

Sewing Directions



Read **General Directions** on page 1 before you begin.

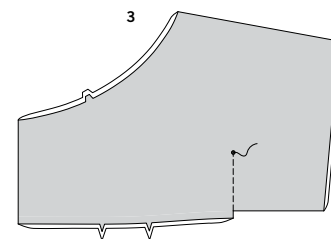
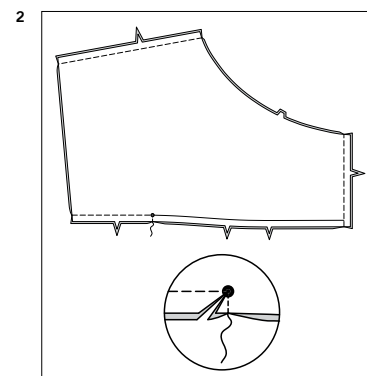
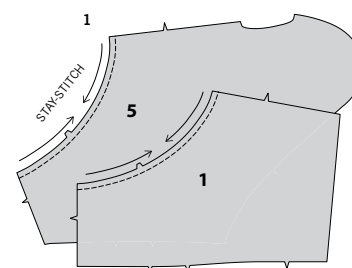
Sewing items in **BOLD TYPE** in Sewing Instructions are explained below:

INTERFACING- Pin interfacing to **WRONG** side of fabric. Fuse interfacing in place following manufacturer's directions.

NARROW HEM- Press under hem allowance as indicated on tissue pattern. To form narrow hem, tuck under raw edge to meet crease. Press. Stitch hem in place.

STAY-STITCH- Stitch 1/2" (1.3cm) from cut edge in direction of arrows. This stitching stays in permanently to prevent stretching on curved edges. (Shown only in the first illustration.)

UNDERSTITCH- Press facing and seam away from garment, stitching through facing and seam allowances close to seam.



DRESS A, B

NOTE: Under each sub-heading, the first View will be illustrated, unless otherwise indicated.

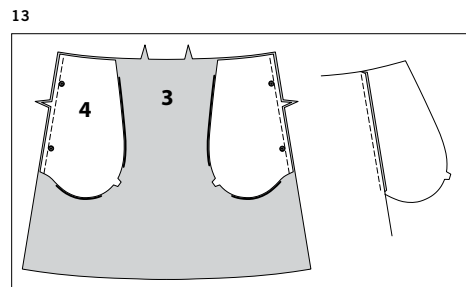
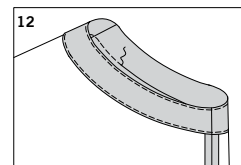
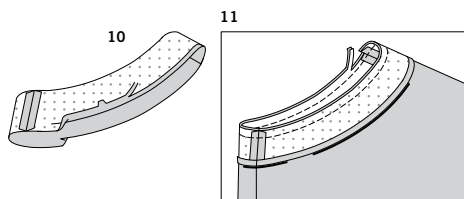
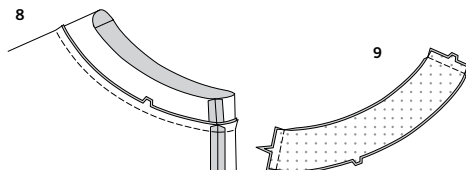
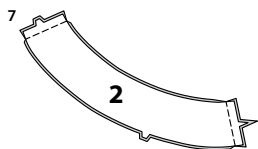
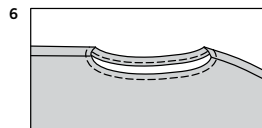
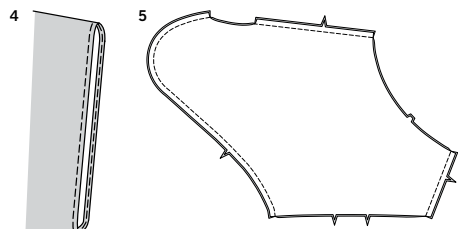
BODICE

- 1. STAYSTITCH** upper right curved edge of bodice front and back (1) or bodice front and back (5) sections, as shown.

FOR VIEW A

- With **RIGHT** sides together, pin bodice front and back together at left shoulder and overarm edge and at right side edge, as shown, matching notches. Stitch seams. Pin lower edges together. Stitch left side, pivoting to lower edge at small dot, as shown, forming sleeve. Clip diagonally to small dot. Trim seam allowances.

- Turn **RIGHT** side out. On **OUTSIDE**, stitch along stitching line, through all layers.



4. Make **NARROW HEM** at lower edge of sleeve.

FOR VIEW B

5. With **RIGHT** sides together, pin bodice front and back together at right side edge, matching notches. Stitch.
Pin bodice front and back together at left shoulder and overarm edge and at left side and lower sleeve edge, as shown, matching notches. Stitch, leaving inner curved edges open.

6. Make **NARROW HEM** at opening in sleeve.

CONTINUE AS FOLLOWS FOR VIEWS A, B

7. With **RIGHT** sides together, stitch two front and back band (2) sections together at ends.
NOTE: Remaining front and back band sections will be used as facing.

8. With **RIGHT** sides together, pin band to upper edge, matching centers, seams and notches, having raw edges even. Clip to stay-stitching if necessary. Baste. Stitch. Press seam toward band.

9. Apply **INTERFACING** to front and back band facing sections. With **RIGHT** sides together, stitch facing sections together at ends.

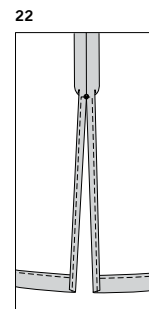
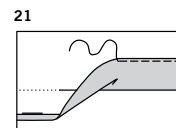
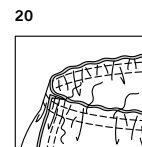
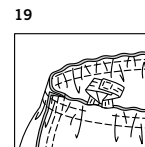
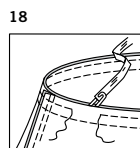
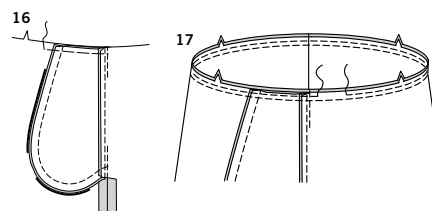
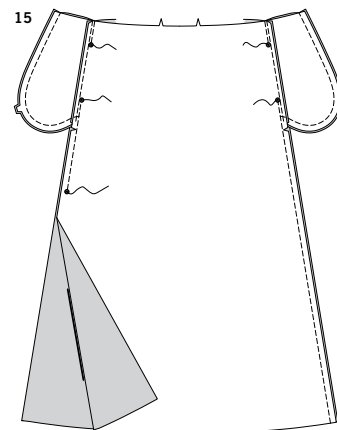
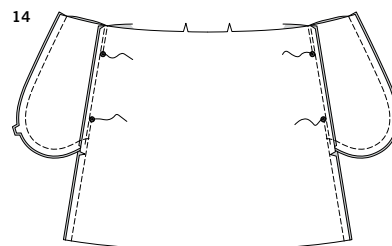
10. Press under 1/2" (1.3cm) on lower edge of band facing, easing in fullness, if necessary. Trim pressed seam allowance to 3/8" (1cm).

11. With **RIGHT** sides together, pin band facing to band, matching centers and seams, having raw edges even. Stitch upper edge. Trim seam allowances. **UNDERSTITCH** band facing.

12. Turn facing to inside. Press. **STITCH IN THE DITCH.**

SKIRT AND FINISHING

13. With **RIGHT** sides together, pin one pocket (4) section to side edges of each skirt front and back (3) section matching large dots, having raw edges even.
Stitch in 3/8" (1cm) seam.
Press seams toward pockets, pressing pockets out.



FOR VIEW A

14. With **RIGHT** sides together, pin skirt front to back sections together at side seams, matching large dots.
Stitch side seams, leaving an opening between large dots.
Stitch pocket edges together to side seam.
For back, clip seam allowances below pockets on one skirt front and back section.

FOR VIEW B

15. With **RIGHT** sides together, pin skirt front to back sections together at side seams, matching large dots.
Stitch side seams, leaving an opening between upper large dots and right side open below lower large dot, as shown.
Stitch pocket edges together to side seam.
For back, clip seam allowances below pockets on one skirt front and back section.

CONTINUE AS FOLLOWS FOR VIEWS A, B

16. Press seam open below clips. Press pocket toward front. Baste upper edges.

17. With **RIGHT** sides together, pin skirt to lower edge of bodice, matching centers and notches. Stitch.
To form casing for elastic, stitch again 1/4" (6mm) from raw edges, leaving an opening to insert elastic.

18. Cut a piece of elastic the measurement of waist plus 1" (2.5cm). Insert elastic through opening in casing. Overlap ends and hold with a safety pin. Try on; adjust if necessary.

19. Stitch ends of elastic together securely.

20. Stitch opening, stretching elastic while stitching. Distribute fullness evenly.

21. Turn up 1 1/4" (3.2cm) hem on lower edge of skirt.
Turn 1/4" (6mm) on raw edge of hem to wrong side; press. Stitch close to inner edge of hem.

FOR VIEW B

22. Make **NARROW HEM** at right opening edges, tapering to nothing above large dot, squaring stitching at opening.



Congrats!

You've completed your sewing adventure

SHARE YOUR LOOK



Post your pattern and tag us
@simplicity_creative_group and **#simplicitypatterns**
for a chance to be featured on our social media.

Look for more PDF patterns at **simplicity.com**

Have a question or need help with your sewing project call us at
1-888-588-2700



Simplicity ©2023 a division of IG Design Group Americas Inc. • Atlanta, GA 30342 USA www.thedesigngroup.com • All Rights Reserved. www.simplicity.com • Made in the U.S.A. Fabriqué aux États-Unis.

To be used for individual private home use only and not for commercial or manufacturing purposes. • A usage privé seulement et non à des fins commerciales ou de production en série. • Para uso privado solamente, no se puede utilizar con propósitos de comercialización o de producción en serie.