



Easy

**MISSES' CAFTAN IN TWO LENGTHS**

**Suggested Fabrics:** Batiks, Charmeuse, Cotton Lawn, Cotton Blends, Crepe de Chine, Gauze, Silky Types, Voile. **Interfacing:** Lightweight Fusible.

**Notions:** A,B: 1½ yds. (1.0m) of ¼" (6mm) elastic.

Sizes	4	6	8	10	12	14	16	18	20
European	30	32	34	36	38	40	42	44	46

**BODY MEASUREMENTS: Select pattern size based on body measurements**

Bust	29½	30½	31½	32½	34	36	38	40	42	Ins.
Waist	22	23	24	25	26½	28	30	32	34	"
Hip-9" below waist	31½	32½	33½	34½	36	38	40	42	44	"
Back-neck to waist	15¼	15½	15¾	16	16¼	16½	16¾	17	17¼	"

**Interfacing A,B**

20" - ¾ yd.

Caftan A	60**	1¼	1¼	1¼	1 ½	1 ½	2	2	2	2 ½	Yds.
Caftan B	60**	¾	¾	¾	¾	¾	4	4	4	4	Yds.

**FINISHED GARMENT MEASUREMENTS (Includes Design and Wearing Ease)**

A Bust	34	35	36	37	38½	40½	42½	44½	46½	Ins.
B Bust	42	43	44	45	46½	48½	50½	52½	54½	"
A,B Waist	34	35	36	37	38½	40½	42½	44½	46½	"
A,B Hip	40	41	42	43	44½	46½	48½	50½	52½	"
Width, lower edge										
Caftan A	45½	46½	47½	48½	50	52	54	56	58	Ins.
Caftan B	61	62	63	64	65½	67½	69½	71½	73½	"
Finished back length from base of neck										
Caftan A	33¼	33½	33¾	34	34¼	34½	34¾	35	35¼	Ins.
Caftan B	57¼	57½	57¾	58	58¼	58½	58¾	59	59¼	"

\*with nap \*\*without nap

Facile

**CAFTAN EN DEUX LONGUEURS POUR JEUNES FEMMES**

**Tissus Conseillés:** Batiks, Charmeuse, Linon de coton, Cotonnades, Crêpe de chine, Gaze, Tissus soyeux, Voile. **Entoilage:** Thermocollant léger.

**Mercerie:** A,B: 1.0m d'élastique de 6mm.

Tailles	4	6	8	10	12	14	16	18	20
Françaises	32	34	36	38	40	42	44	46	48
Européen	30	32	34	36	38	40	42	44	46

**MESURES DU CORPS: Choisissez la taille du patron basée sur les mesures du corps**

Poitrine	75	78	80	83	87	92	97	102	107	cm
Taille	56	58	61	64	67	71	76	81	87	"
Hanches (23cm au-dessous de la taille)										
	80	83	85	88	92	97	102	107	112	cm

**Dos du cou à la taille** 38.5 39.5 40 40.5 41.5 42 42.5 43 44 "

**Entoilage A,B**

51cm - 0.7m

Caftan A	150cm*	1.6	1.6	1.6	1.6	1.6	1.9	1.9	1.9	1.9	m
Caftan B	150cm*	3.6	3.6	3.6	3.6	3.6	3.7	3.7	3.7	3.7	m

**MESURES DES VÊTEMENTS FINI (Motif et aisance de port compris)**

A Poitrine	86	89	91	94	98	103	108	113	118	cm
B Poitrine	107	109	112	114	118	123	128	133	138	"
A,B Taille	86	89	91	94	98	103	108	113	118	"
A,B Hanches	102	104	107	109	113	118	123	128	133	"
Largeur à l'ourlet										
Caftan A	116	118	121	123	127	132	137	142	147	cm
Caftan B	155	157	160	163	166	171	177	182	187	"
Longueur finie – dos, votre nuque à l'ourlet										
Caftan A	84	85	86	86	87	88	88	89	90	cm
Caftan B	145	146	147	147	148	149	149	150	150	"

\*avec sens \*\*sans sens



A

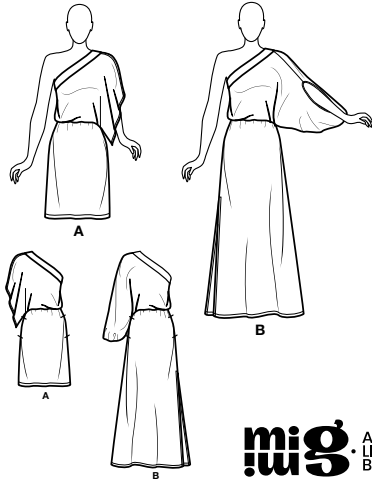


B



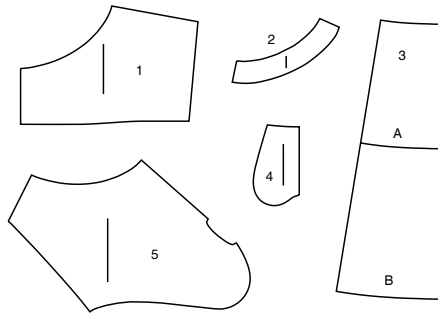
# Simplicity®

Thank you for purchasing this Simplicity pattern. We made every effort to provide you with a high quality product.



**miG** A DIY & LIFESTYLE BRAND

5 PIECES



- 1 BODICE FRONT AND BACK - A
- 2 FRONT AND BACK BAND - A,B
- 3 SKIRT FRONT AND BACK - A,B
- 4 POCKET - A,B
- 5 BODICE FRONT AND BACK - B

## General Directions

### The Pattern

- SYMBOLS**
- GRAIN LINE: Place on straight grain of fabric parallel to selvage
  - PLACE SOLID LINE on fold of fabric.
  - CENTER FRONT OR BACK of garment.
  - NOTCHES
  - DOTS
  - CUTTING LINE
  - LENGTHEN OR SHORTEN LINES

SEAM ALLOWANCE: 5/8" (1.5cm) unless otherwise stated is included but not printed on MULTI-SIZE PATTERNS. Mark your size with colored felt tip pen. See chart on tissue for how to use MULTI-SIZE PATTERNS.

**ADJUST IF NEEDED**  
Make adjustments before placing pattern on fabric.

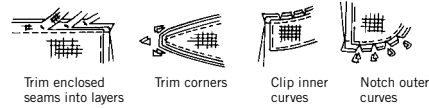
**TO LENGTHEN:**  
Cut pattern between lengthen or shorten lines. Spread pattern evenly, the amount needed and tape to paper.

**TO SHORTEN:**  
At lengthen or shorten lines, make an even pleat taking up amount needed. Tape in place.

When lengthen or shorten lines are not given, make adjustments at lower edge of pattern.

### Sewing

- SEW garment following **Sewing Directions**.
- PIN or machine-baste seams matching notches.
- STITCH 5/8" (1.5 cm) seams unless otherwise stated.
- PRESS seams open unless otherwise indicated clipping when necessary so seams will lie flat.
- TRIM seams to reduce bulk, as shown below.



### Cutting/Marking

#### BEFORE CUTTING:

PRESS pattern pieces with a warm dry iron. PRE-SHRINK fabric by pre-washing washables or steam-pressing non-washables.

CIRCLE your cutting layout.

PIN pattern to fabric as shown in Cutting Layouts.

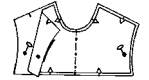
- FOR DOUBLE THICKNESS: Fold fabric with RIGHT sides together.
- FOR SINGLE THICKNESS: Place fabric RIGHT side up.
- FOR PILE, SHADED OR ONE WAY DESIGN FABRICS: Use "with nap" layouts

#### AFTER CUTTING:

Transfer markings to WRONG side of fabric before removing pattern. Use pin and chalk method or dressmaker's tracing paper and wheel.

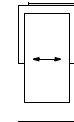
#### To Quick Mark:

- Snip edge of fabric to mark notches, ends of fold lines and center lines.
- Pin mark dots.



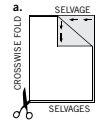
### SPECIAL CUTTING NOTES

★ If layout shows a piece extending past fold, cut out all pieces except piece that extends.

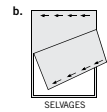


Open out fabric to single thickness. Cut extending piece on RIGHT side of fabric in position shown.

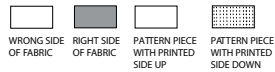
✱ Mark small arrows along both selvages indicating direction of nap or design. Fold fabric crosswise with RIGHT sides together, and cut along fold (a).



Turn one fabric layer around so arrows on both layers go in the same direction. Place RIGHT sides together (b).



## Cutting Layouts

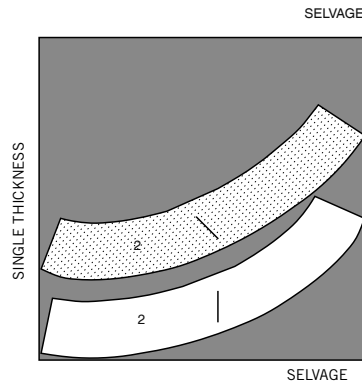


POSITION OF PATTERN PIECES MAY VARY SLIGHTLY ACCORDING TO YOUR PATTERN SIZE

### INTERFACING A,B

USE PIECE 2

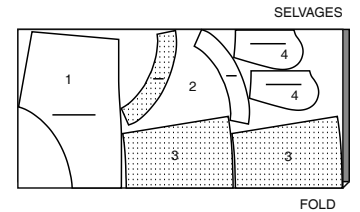
20 (51CM)  
ALL SIZES



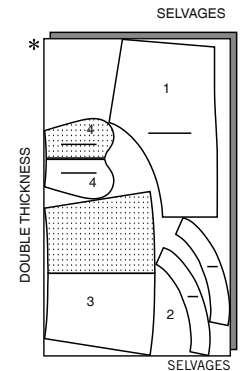
### CAFTAN A

USE PIECES 1 2 3 4

60" (150CM)  
WITH NAP  
SIZES 4 6 8 10 12



60" (150CM)  
WITH NAP  
SIZES 14 16 18 20



CUTTING LAYOUTS CONTINUED ON PAGE 2

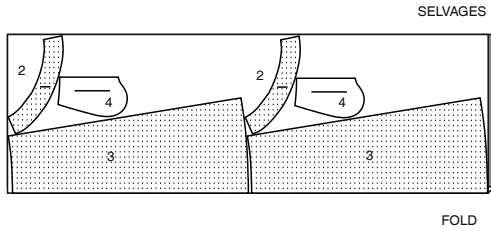
# S9776

2 of 3

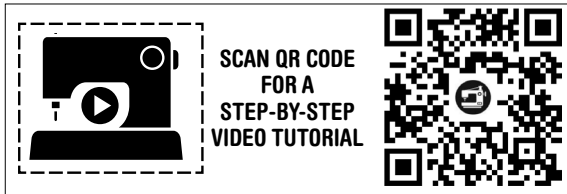
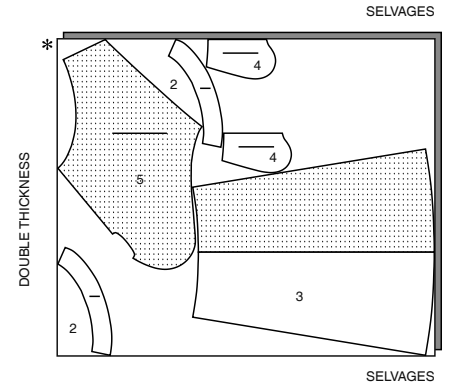
## CAFTAN B

USE PIECES 2 3 4 5

60" (150CM)  
WITH NAP  
SIZES 4 6 8 10 12 14

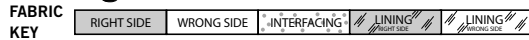


60" (150CM)  
WITH NAP  
SIZES 16 18 20



Congratulations on purchasing a Mimi G for Simplicity Sew Along Pattern. Please scan the QR code to link to the Sew Along video for this pattern, hosted by Mimi G. This video features step by step instructions and helpful pattern insight. Enjoy!

## Sewing Directions



Read **General Directions** on page 1 before you begin.

Sewing items in **BOLD TYPE** in Sewing Instructions are explained below:

**INTERFACING**- Pin interfacing to **WRONG** side of fabric. Fuse interfacing in place following manufacturer's directions.

**NARROW HEM**- Press under hem allowance as indicated on tissue pattern. To form narrow hem, tuck under raw edge to meet crease. Press. Stitch hem in place.

**STAY-STITCH**- Stitch 1/2" (1.3cm) from cut edge in direction of arrows. This stitching stays in permanently to prevent stretching on curved edges. (Shown only in the first illustration.)

**UNDERSTITCH**- Press facing and seam away from garment, stitching through facing and seam allowances close to seam.

## DRESS A, B

**NOTE:** Under each sub-heading, the first View will be illustrated, unless otherwise indicated.

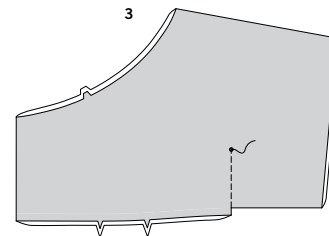
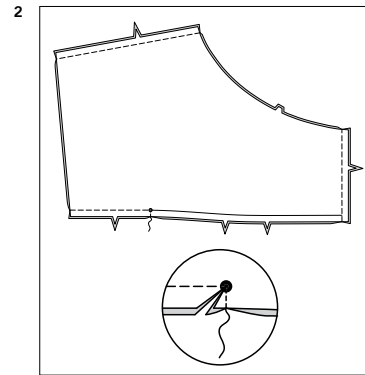
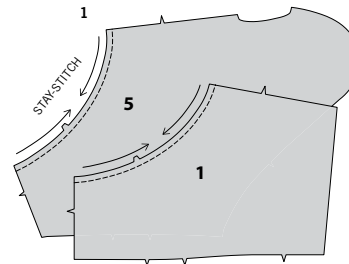
### BODICE

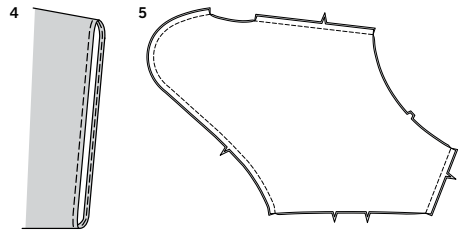
- 1. STAYSTITCH** upper right curved edge of bodice front and back (1) or bodice front and back (5) sections, as shown.

### FOR VIEW A

- With **RIGHT** sides together, pin bodice front and back together at left shoulder and overarm edge and at right side edge, as shown, matching notches. Stitch seams. Pin lower edges together. Stitch left side, pivoting to lower edge at small dot, as shown, forming sleeve. Clip diagonally to small dot. Trim seam allowances.

- Turn **RIGHT** side out. On **OUTSIDE**, stitch along stitching line, through all layers.

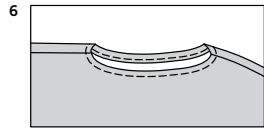




4. Make **NARROW HEM** at lower edge of sleeve.

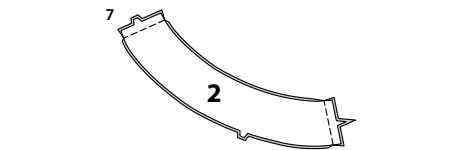
#### FOR VIEW B

5. With **RIGHT** sides together, pin bodice front and back together at right side edge, matching notches. Stitch. Pin bodice front and back together at left shoulder and overarm edge and at left side and lower sleeve edge, as shown, matching notches. Stitch, leaving inner curved edges open.

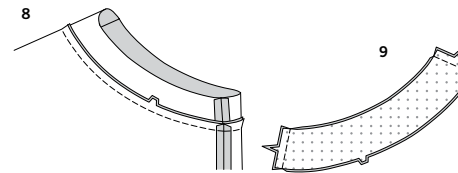


6. Make **NARROW HEM** at opening in sleeve.

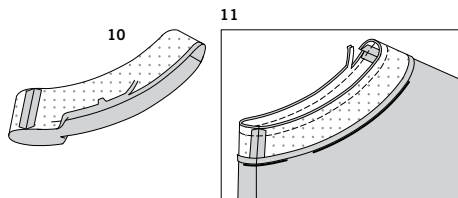
#### CONTINUE AS FOLLOWS FOR VIEWS A, B



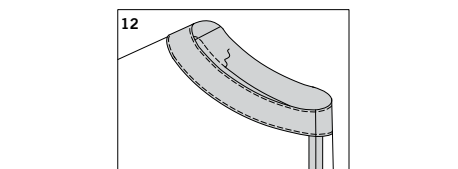
7. With **RIGHT** sides together, stitch two front and back band (2) sections together at ends.  
**NOTE:** Remaining front and back band sections will be used as facing.



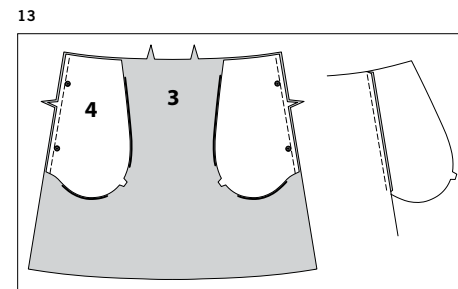
8. With **RIGHT** sides together, pin band to upper edge, matching centers, seams and notches, having raw edges even. Clip to stay-stitching if necessary. Baste. Stitch. Press seam toward band.



9. Apply **INTERFACING** to front and back band facing sections. With **RIGHT** sides together, stitch facing sections together at ends.



10. Press under 1/2" (1.3cm) on lower edge of band facing, easing in fullness, if necessary. Trim pressed seam allowance to 3/8" (1cm).

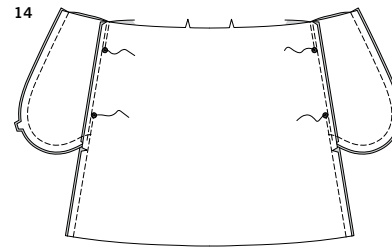


11. With **RIGHT** sides together, pin band facing to band, matching centers and seams, having raw edges even. Stitch upper edge. Trim seam allowances. **UNDERSTITCH** band facing.

12. Turn facing to inside. Press. **STITCH IN THE DITCH.**

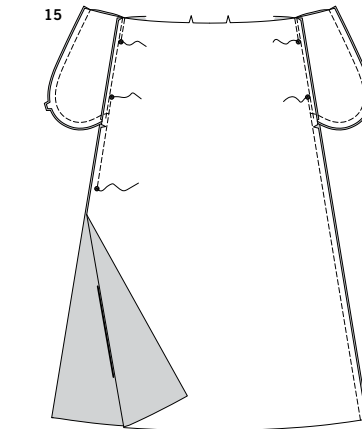
#### SKIRT AND FINISHING

13. With **RIGHT** sides together, pin one pocket (4) section to side edges of each skirt front and back (3) section matching large dots, having raw edges even. Stitch in 3/8" (1cm) seam. Press seams toward pockets, pressing pockets out.



#### FOR VIEW A

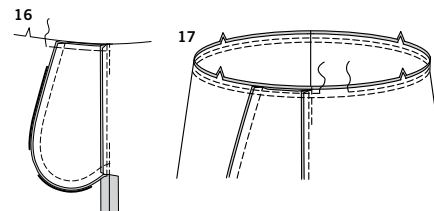
14. With **RIGHT** sides together, pin skirt front to back sections together at side seams, matching large dots. Stitch side seams, leaving an opening between large dots. Stitch pocket edges together to side seam. For back, clip seam allowances below pockets on one skirt front and back section.



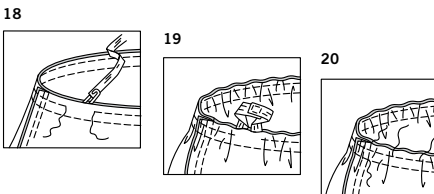
#### FOR VIEW B

15. With **RIGHT** sides together, pin skirt front to back sections together at side seams, matching large dots. Stitch side seams, leaving an opening between upper large dots and right side open below lower large dot, as shown. Stitch pocket edges together to side seam. For back, clip seam allowances below pockets on one skirt front and back section.

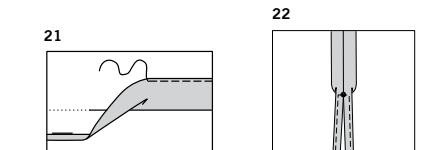
#### CONTINUE AS FOLLOWS FOR VIEWS A, B



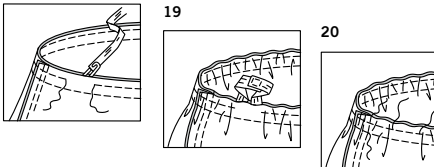
16. Press seam open below clips. Press pocket toward front. Baste upper edges.



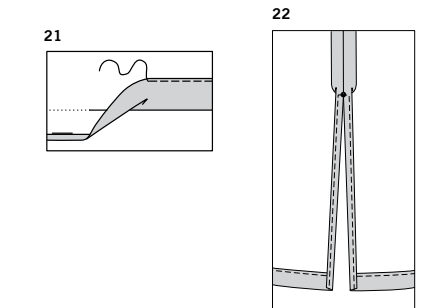
17. With **RIGHT** sides together, pin skirt to lower edge of bodice, matching centers and notches. Stitch. To form casing for elastic, stitch again 1/4" (6mm) from raw edges, leaving an opening to insert elastic.



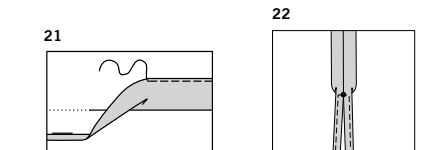
18. Cut a piece of elastic the measurement of waist plus 1" (2.5cm). Insert elastic through opening in casing. Overlap ends and hold with a safety pin. Try on; adjust if necessary.



19. Stitch ends of elastic together securely.



20. Stitch opening, stretching elastic while stitching. Distribute fullness evenly.



21. Turn up 1 1/4" (3.2cm) hem on lower edge of skirt. Turn 1/4" (6mm) on raw edge of hem to wrong side; press. Stitch close to inner edge of hem.

#### FOR VIEW B

22. Make **NARROW HEM** at right opening edges, tapering to nothing above large dot, squaring stitching at opening.



# Congrats!

You've completed your sewing adventure

---

## SHARE YOUR LOOK



Post your pattern and tag us  
**@simplicity\_creative\_group** and **#simplicitypatterns**  
for a chance to be featured on our social media.

Look for more PDF patterns at **simplicity.com**

Have a question or need help with your sewing project call us at  
1-888-588-2700

**Simplicity**  
by design

Simplicity ©2023 a division of IG Design Group Americas Inc. • Atlanta, GA 30342 USA www.thedesigngroup.com • All Rights Reserved. www.simplicity.com • Made in the U.S.A. Fabriqué aux États-Unis.

To be used for individual private home use only and not for commercial or manufacturing purposes. • A usage privé seulement et non à des fins commerciales ou de production en série. • Para uso privado solamente, no se puede utilizar con propósitos de comercialización o de producción en serie.