

S9756

Simplicity®



A



B



C



A,B,C



Average

MISSES' AND WOMEN'S SHIRT, PANTS AND HALTER TOP

Suggested Fabrics: Charmeuse, Cotton Blends, Crepe de Chine, Gauze, Lightweight Linen Blends, Poplin, Silky Types. **Interfacing:** Lightweight Fusible.

Notions: A: Eleven ¾" (2cm) buttons. B: 1" (2.5cm) elastic; 2 yds. (1.8m) for sizes 10 - 18; 2½ yds. (2.4m) for sizes 20W - 28W. C: One 7" (18cm) separating zipper (adjust to fit), one 1" - 2" (2.5cm - 5cm) O-ring.

Sizes	10	12	14	16	18	20W	22W	24W	26W	28W
European	36	38	40	42	44	46	48	50	52	54

BODY MEASUREMENTS: Select pattern size based on body measurements

Bust	32½	34	36	38	40	42	44	46	48	50	Ins.
Waist	25	26½	28	30	32	35	37	39	41½	44	"
Hip-9" below waist	34½	36	38	40	42	44	46	48	50	52	"
Back-neck to waist	16	16½	16½	16½	17	17½	17½	17½	17½	17½	"

Shirt A	45**	3	3	3½	3½	3½	3½	3½	3½	4	Yds.
	60**	2%	2%	2½	2½	2½	2½	2½	2½	2½	"

Interfacing - 20" - ¾ yd.

Pants B	45**	2¾	2%	2%	2%	2%	2%	2%	2%	3	Yds.
	60**	1%	2%	2%	2%	2%	2%	2%	2%	2%	"

Halter Top C	45**	1%	1%	1%	1%	1%	1%	1%	1%	1½	Yds.
	60**	1	1	1	1	1	1	1	1	1	"

Interfacing - 20" - ¾ yd.

FINISHED GARMENT MEASUREMENTS (Includes Design and Wearing Ease)

A Bust	40	41½	43½	45½	47½	48½	50½	52½	54½	56½	Ins.
A Waist	45	46½	48½	50½	52½	53	55	57	59	61	"
B Hip	39	40½	42½	44½	46½	47	49	51	53	55	"
Width, each leg											
Pants B	24	24½	25	25½	26	25½	26	26½	27	27½	Ins.
Finished back length from base of neck											
Shirt A	35	35½	35½	35½	36	36½	37	37½	37½	37½	Ins.
Finished side length from waist											
Pants B	41½	41½	42	42½	42½	42½	42½	42½	43	43½	Ins.

*without nap **with nap

Moins Facile

CHEMISE, PANTALON ET HAUT DOS NU POUR JEUNES FEMMES ET FEMMES

Tissus Conseillés: Charmeuse, Cotonnades, Crêpe de chine, Gaze, Lin mélangés léger, Popeline, Tissus soyeux. **Entoilage:** Thermocollant léger.

Mercerie: A: 11 boutons de 2cm. B: Élastique de 2.5cm: 1.8m pour tailles 10 - 18; 2.4m pour tailles 20W - 28W. C: 1 fermeture à glissière séparable de 18cm (adaptez pour ajuster), 1 anneau O de 2.5cm à 5cm.

Tailles	10	12	14	16	18	20W	22W	24W	26W	28W
Françaises	38	40	42	44	46	48	50	52	54	56
Européen	36	38	40	42	44	46	48	50	52	54

MESURES DU CORPS: Choisissez la taille du patron basée sur les mesures du corps

Poitrine	83	87	92	97	102	107	112	117	122	127	cm
Taille	64	67	71	76	81	89	94	99	105	112	"
Hanches (23cm au-dessous de la taille)	88	92	97	102	107	112	117	122	127	132	cm

Dos du cou à la taille	40.5	41.5	42	42.5	43	44	44	44.5	45	45	"
------------------------	------	------	----	------	----	----	----	------	----	----	---

Chemise A	115cm*	2.8	2.8	2.9	2.9	2.9	3.0	3.0	3.2	3.5	3.7	m
	150cm*	2.20	2.2	2.2	2.3	2.3	2.4	2.4	2.4	2.4	2.6	"

Entoilage - 51cm - 0.8m

Pantalon B	115cm*	2.6	2.6	2.7	2.7	2.7	2.7	2.7	2.7	2.8	m
	150cm*	1.8	2.0	2.2	2.2	2.2	2.3	2.3	2.3	2.6	"

Haut dos nu C	115cm*	1.3	1.3	1.3	1.3	1.3	1.3	1.3	1.4	1.4	m
	150cm*	1.0	1.0	1.0	1.0	1.0	1.1	1.1	1.1	1.1	"

Entoilage - 51cm - 0.8m

MESURES DES VÊTEMENTS FINI (Motif et aisance de port compris)

A Poitrine	102	105	110	116	121	123	128	133	138	144	cm
A Taille	114	118	123	128	133	135	140	145	150	155	"
B Hanches	124	126	133	138	144	149	154	159	164	169	"
Largeur, chaque jambe											
Pantalon B	61	62	64	65	66	65	66	67	69	70	cm
Longueur finie - dos, votre nuque à l'ourlet											
Chemise A	89	90	90	91	91	93	94	95	95	96	cm
Longueur finie - côté, taille à l'ourlet											
Pantalon B	105	106	107	107	108	107	108	109	109	110	cm

*sans sens **avec sens



A



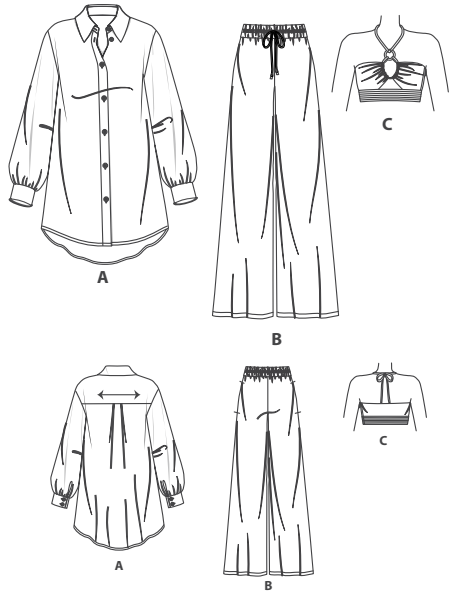
B



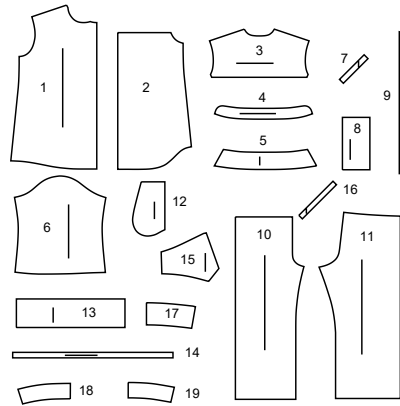
C

Simplicity®

Thank you for purchasing this Simplicity pattern.
We made every effort to provide you with a high quality product.



19 PIECES



- 1 FRONT - A
2 BACK - A
3 YOKE BACK - A
4 COLLAR BAND - A
5 COLLAR - A
6 SLEEVE - A
7 CONTINUOUS LAP - A
8 CUFF - A
9 GUIDE FOR BUTTONHOLES - A
10 FRONT - B
11 BACK - B
12 POCKET - B
13 CASING - B
14 TIE - B, C
15 FRONT - C
16 DRAWSTRING - C
17 BACK - C
18 FRONT BAND - C
19 BACK BAND - C



www.simplicity.com



info@simplicity.com



1-888-588-2700

General Directions

The Pattern

- SYMBOLS**
- GRAIN LINE** Place on straight grain of fabric parallel to selvage
 - PLACE SOLID LINE** on fold of fabric.
 - CENTER FRONT OR BACK** of garment.
 - NOTCHES**
 - DOTS**
 - CUTTING LINE**
 - LENGTHEN OR SHORTEN LINES**

SEAM ALLOWANCE: 5/8" (1.5cm) unless otherwise stated is included but not printed on MULTI-SIZE PATTERNS. Mark your size with colored felt tip pen. See chart on tissue for how to use MULTI-SIZE PATTERNS.

ADJUST IF NEEDED
Make adjustments before placing pattern on fabric.

TO LENGTHEN:
Cut pattern between lengthen or shorten lines. Spread pattern evenly, the amount needed and tape to paper.

TO SHORTEN:
At lengthen or shorten lines, make an even pleat taking up amount needed. Tape in place.

When lengthen or shorten lines are not given, make adjustments at lower edge of pattern.

Cutting/Marking

BEFORE CUTTING:

PRESS pattern pieces with a warm dry iron. PRE-SHRINK fabric by pre-washing washables or steam-pressing non-washables.

CIRCLE your cutting layout.

PIN pattern to fabric as shown in Cutting Layouts.

• **FOR DOUBLE THICKNESS:** Fold fabric with RIGHT sides together.

• **FOR SINGLE THICKNESS:** Place fabric RIGHT side up.

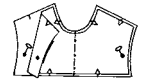
• **FOR PILE, SHADED OR ONE WAY DESIGN FABRICS:** Use "with nap" layouts

AFTER CUTTING:

Transfer markings to WRONG side of fabric before removing pattern. Use pin and chalk method or dressmaker's tracing paper and wheel.

To Quick Mark:

- Snip edge of fabric to mark notches, ends of fold lines and center lines.
- Pin mark dots.



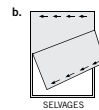
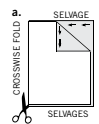
SPECIAL CUTTING NOTES

★ If layout shows a piece extending past fold, cut out all pieces except piece that extends.

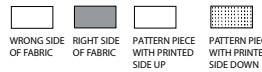
Open out fabric to single thickness. Cut extending piece on RIGHT side of fabric in position shown.

✱ Mark small arrows along both selvages indicating direction of nap or design. Fold fabric crosswise with RIGHT sides together, and cut along fold (a).

Turn one fabric layer around so arrows on both layers go in the same direction. Place RIGHT sides together (b).



Cutting Layouts



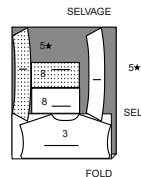
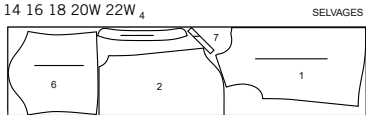
POSITION OF PATTERN PIECES MAY VARY SLIGHTLY ACCORDING TO YOUR PATTERN SIZE

SHIRT A

USE PIECES 1 2 3 4 5 6 7, 8

45" (115CM) WITH NAP

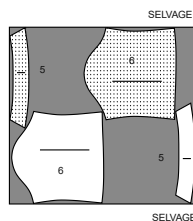
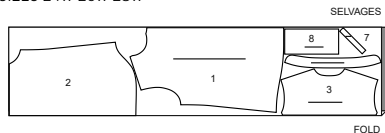
SIZES 10 12 14 16 18 20W 22W 4



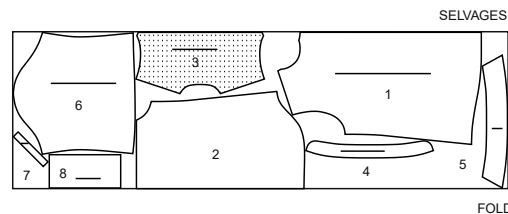
45" (115CM)

WITH NAP

SIZES 24W 26W 28W



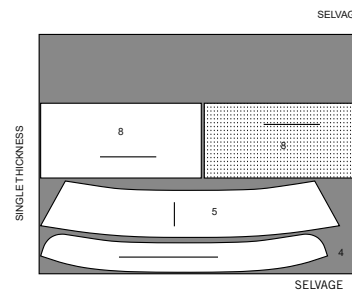
60" (150CM)
WITH NAP
ALL SIZES



INTERFACING

USE PIECES 4 5 8

20" (51CM) FUSIBLE
ALL SIZES

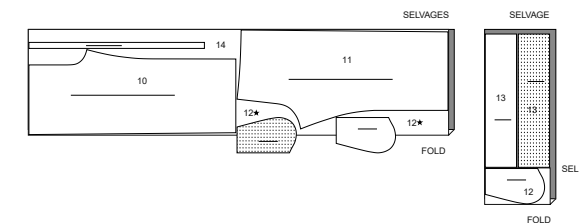


PANTS B

USE PIECES 10 11 12 13 14

45" (115CM) WITH NAP

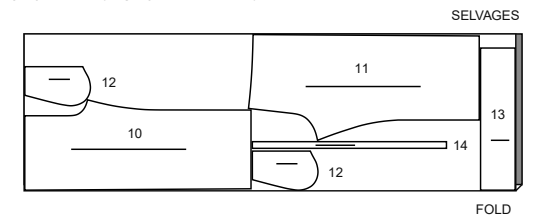
ALL SIZES



60" (150CM)

WITH NAP

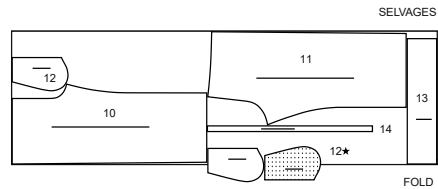
SIZES 10 12 14 16 18 20W 22W 24W 26W



CUTTING LAYOUTS CONTINUED ON PAGE 2

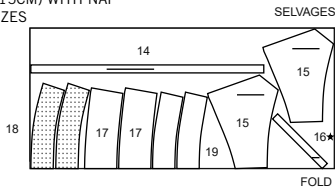
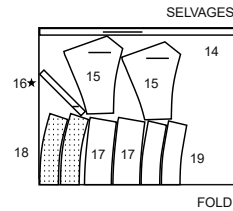
S9756

2 of 4

60" (150CM)
WITH NAP
SIZE 28W

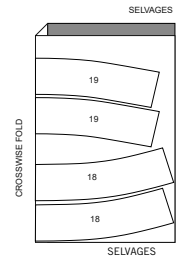
HALTER TOP C

USE PIECES 14 15 16 17 18 19

45" (115CM) WITH NAP
ALL SIZES60" (150CM)
WITH NAP
ALL SIZES

INTERFACING

USE PIECES 18 19

20" (51CM) FUSIBLE
ALL SIZES

SEWING TUTORIALS

Build your skills viewing short, easy-to-follow videos at
simplicity.com/sewingtutorials

Sewing Directions

FABRIC
KEY

RIGHT SIDE WRONG SIDE INTERFACING LINING Lining

Read **General Directions** on page 1 before you begin.Sewing methods shown in **ITALICS** are defined below:**FINISH** - Stitch 1/4" (6mm) from raw edge and finish with one of the following: (1) Pink OR (2) Overcast OR (3) Turn in along stitching and stitch close to fold OR (4) Overlock.**OPTIONAL FOR HEMS:** Apply Seam Binding.**NARROW HEM** - Press under hem allowance. To form narrow hem, tuck under raw edge to meet the crease. Press. Stitch hem in place.**INTERFACING** - Pin interfacing to **WRONG** side of fabric. Fuse interfacing in place following manufacturer's directions.**STAYSTITCH** - Stitch 1/2" (1.3cm) from cut edge in the direction of arrows. This stitching stays in permanently to prevent stitching on curved edge. (Shown only in first illustration).**UNDERSTITCH** - Press facing and seam away from garment, stitching through facing and seam allowances close to seam.**PATTERN PIECES WILL BE IDENTIFIED BY NUMBERS THE FIRST TIME THEY ARE USED.****STITCH SEAMS WITH RIGHT SIDES TOGETHER UNLESS OTHERWISE STATED.**

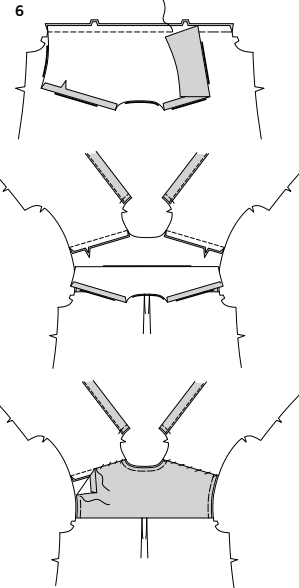
SHIRT A

FRONT

1. Turn long edge of Front (1) to **WRONG** side along outer foldline for interfacing; press. Baste in place.
2. Turn front self facing to **INSIDE** along foldline for facing; press. Baste neck, lower and inner edge.
3. Topstitch front along basting.

BACK AND YOKE

4. To make each pleat in Back (2) on **OUTSIDE**, fold along solid lines. Bring fold to broken lines. Baste across upper edge of pleats.
5. Pin one Yoke back (3) section to back, **RIGHT** sides together, matching notches and centers. Baste. (Remaining yoke back section will be used as facing.)



6. Press under 5/8" (1.5cm) on forward shoulder edges of yoke back **FACING** (3). Pin **RIGHT** side of yoke facing to **WRONG** side of back. Stitch. Press yoke and facing upward.

7. Pin fronts to yoke, **RIGHT** sides together. Do not catch yoke facing. Stitch fronts to yoke at forward shoulder edges. Press seam allowances toward yoke.

8. Pin pressed-under forward shoulder edges of yoke facing over seam allowances and Slip-stitch in place. Baste neck and armhole edges together.

9. Stitch front to back at sides.

COLLAR AND COLLAR BAND

10. **STAYSTITCH** neck edge of shirt between dots.

11. Apply **INTERFACING** to one Collar (5). Stitch collar sections together, leaving notched edge open; trim seam.

12. Turn **RIGHT** side out; press. Baste raw edges together.

13. Turn in 5/8" (1.5cm) seam allowance on single notched edge of uninterfaced Collar band (4) section. Press, easing in fullness. Trim pressed-under seam allowance to 3/8" (1cm).

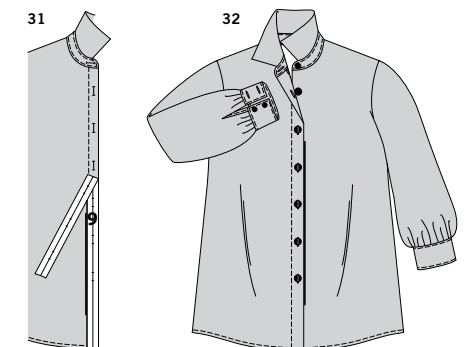
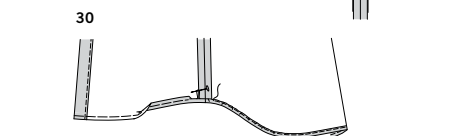
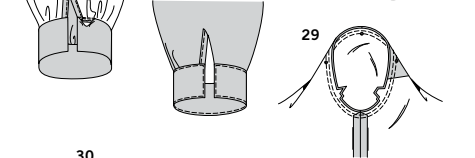
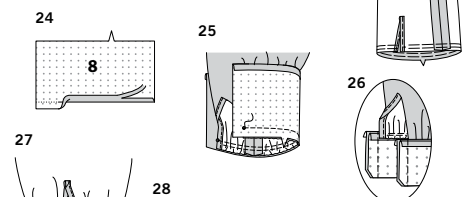
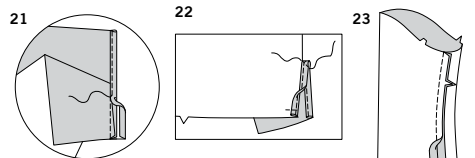
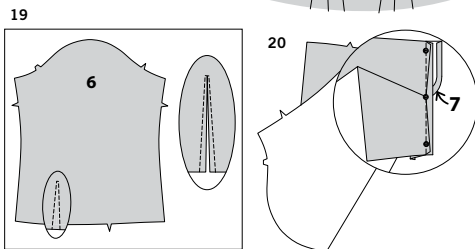
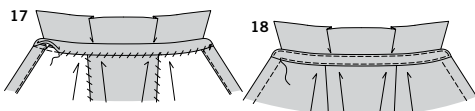
14. Apply **INTERFACING** to remaining collar band. Pin uninterfaced side of collar to interfaced collar band, matching small dots. Pin uninterfaced collar band over collar; baste. Stitch, leaving neck edge open; trim seam.

15. Turn **RIGHT** side out; press.

16. Pin collar band to neck edge, matching center backs, large dots and small dots to shoulder seams, clipping shirt neck edge where necessary. Stitch, keeping pressed edge free. Trim seam; press toward collar band.

S9756

3 of 4



17. Slip-stitch pressed edge over seam.

18. Edge-stitch all edges of collar band.

SLEEVE

19. To make slash opening at lower edge of Sleeve (6), stitch along stitching lines. Pivot and take one small stitch across the point. Slash between stitching, being careful not to slash through the stitch at the point.

TIP- To prevent fabric from fraying, treat the point with a liquid seam sealant, such as Fray Check™. TEST on a scrap of fabric first.

20. Press under 1/4" (6mm) on unmarked edge of Continuous lap (7). Spread slashed edges of sleeve apart so that they form a straight line. Pin RIGHT side of continuous lap to WRONG side of slashed edges, matching stitching lines and small dots. Sleeve seam allowance will be 1/4" (6mm) at the ends, but taper close to nothing at the center dot. Stitch along stitching line, being careful not to pucker sleeve at center dot. Press seam toward lap.

21. Pin pressed edge of lap to OUTSIDE, slightly over stitching. Stitch close to pressed edge.

22. Turn front edge of lap to INSIDE; baste in place across lower edge. To keep lap in place, stitch diagonally across upper edge of lap as shown.

23. Stitch underarm seam. To gather lower edge of sleeve between small dots, stitch along seam line and 1/4" (6mm) INSIDE seam line, using a long machine-stitch.

24. Apply **INTERFACING** to cuff (8) sections. Press under 5/8" (1.5cm) on unnotched edge Cuff; trim to 3/8" (1cm).

25. With RIGHT sides together, pin sleeve to cuff, matching small dots. Pull up gathering stitches to fit; baste. Stitch.

26. Press seam toward cuff, pressing cuff out. Fold cuff in half with RIGHT sides together. Stitch ends. Trim seams and corners.

27. Turn cuff to INSIDE; press. Pin pressed edge of cuff over seam, placing pins on OUTSIDE. Slip-stitch pressed edge over seam.

28. Edge-stitch all edges of cuff.

29. With RIGHT sides together, pin sleeve into armhole edge, matching notches, underarm seams, outer dots and center dot to shoulder seam. Baste. Stitch. Stitch again 1/4" (6mm) away in seam allowances. Trim close to second stitching. Press seam allowances flat. Turn seam allowances toward sleeve.

FINISHING**HEM**

30. Stitch 1/4" (6mm) from lower edge of shirt, using long machine stitches, as shown. Turn up a 5/8" (1.5cm) hem at lower edge of shirt, turning under 1/4" (6mm) on raw edge. Pull thread to ease in fullness. Stitch.

BUTTONHOLES AND BUTTONS

31. Place Guide for buttonholes (9) on RIGHT front, having edges of tissue even with neck and front edges of shirt. Transfer markings. Make buttonholes in RIGHT front at markings.

32. Lap RIGHT front over LEFT, matching centers. Mark and sew buttons under buttonholes. Make buttonholes in collar band at marking. Sew buttons to collar band at small dots. Make buttonholes in cuffs at markings. Sew buttons to cuffs at markings.

PANTS B**FRONT, BACK AND POCKETS**

1. Pin Front (10) to Back (11) at inner leg seams, matching notches. Stitch.
2. With RIGHT sides together, pin center seam, matching inner leg seams and notches. Stitch. To reinforce seam, stitch again over first stitching.

NOTE: Apply pockets to side edges of front and back as follows:

3. With RIGHT sides together, pin Pocket (12) to pants, matching large dots, having raw edges even. Stitch in 3/8" (1cm) seam.
4. Press seam toward pocket, pressing pocket out.
5. Pin front to back at side seams, matching large dots. Stitch side seams, leaving an opening between large dots. Stitch pocket edges together from side seam to upper edge.
6. Clip pants back seam allowance to stitching at lower end of pocket. Press seam open below clip. Press pocket toward front. Baste to upper edge.

CASING

TIP- Apply a small scrap of fusible interfacing to WRONG side of casing, over buttonhole markings.

7. Make buttonholes at markings on one Casing (13) section. (This is front casing.)
8. Pin back casing (13) to front casing at sides, matching notches and dots. Stitch, leaving an opening between each set of dots, as shown. Back-stitch at small dots to reinforce seam. Press seam open.
9. Fold casing on foldline, with WRONG sides together, having raw edges even. Baste raw edges together. (The side with the opening is the underside of the casing.)
10. To form casings, stitch along stitching lines.

11. With the underside of casing facing you, pin casing to pants, matching centers and side seams, placing side openings at LEFT side seam. Stitch along seam line. Stitch again 1/4" (6mm) from first stitching within seam allowance. Trim close to second stitching.

12. Press seams downward, pressing casing out. Cut two pieces of elastic, each to fit waist, plus 1" (2.5cm).

13. Insert elastic through opening in each casing, working elastic through upper casing, then through lower casing. Overlap ends and hold with safety pins. Try on pants and adjust to fit. Stitch ends of elastics together securely.

14. Slip-stitch opening edges of each casing together. Distribute fullness evenly.

15. Stitch seam of Tie (14), matching notches. Fold tie in half lengthwise, RIGHT sides together. Stitch in a 1/4" (6mm) seam, leaving an opening for turning.

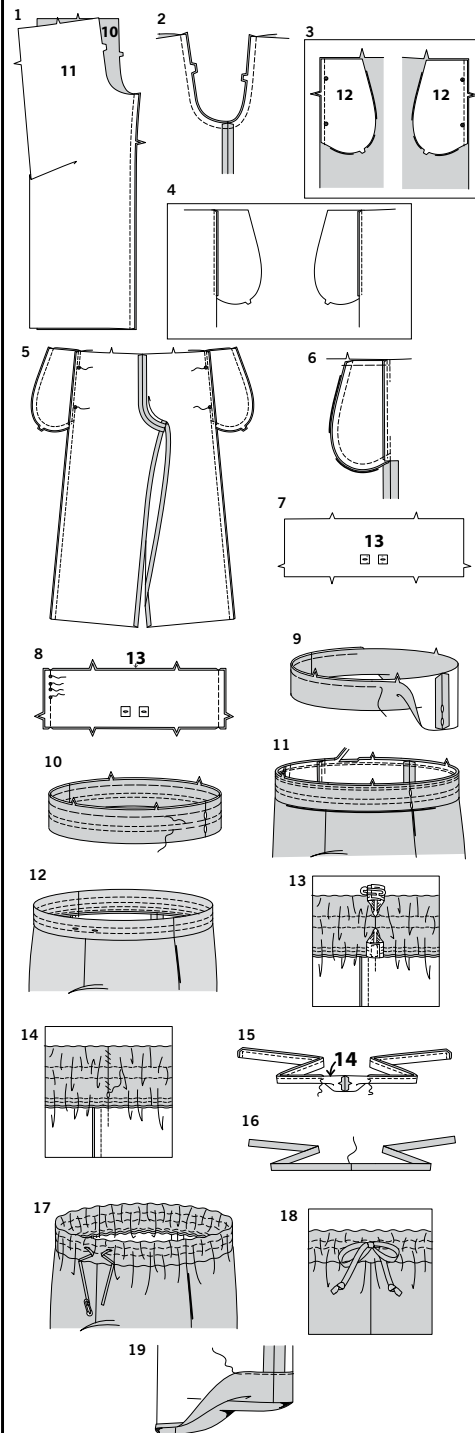
16. Turn RIGHT side out; press. Slip-stitch opening edges together.

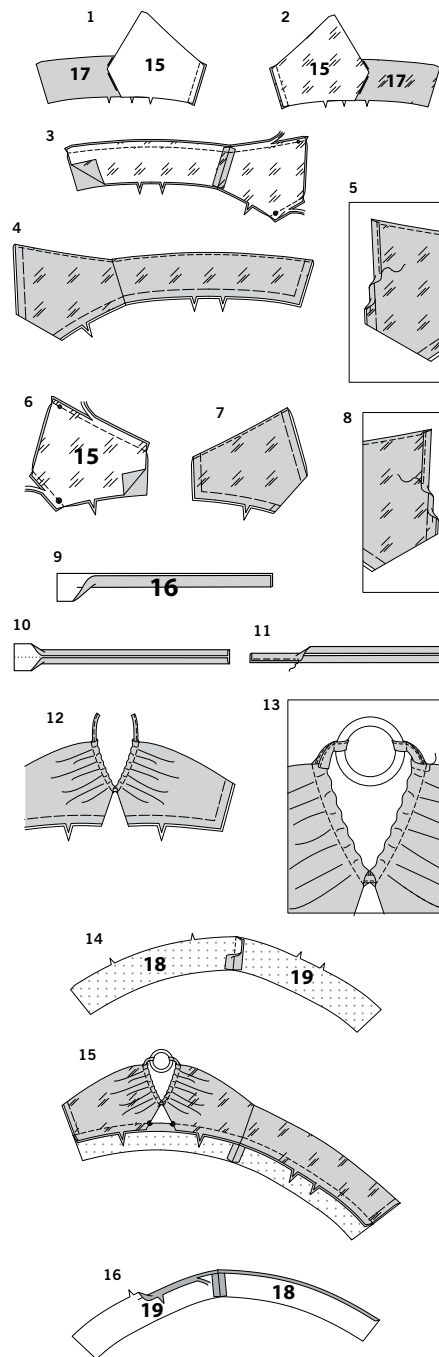
17. Attach a safety pin to one end of tie. Insert pin and tie through one buttonhole opening in front casing. Work tie through entire casing and out through the other buttonhole, having ends extending evenly in the front.

18. Knot ends of tie and tie in a bow.

HEMS

19. Press up 1-1/4" (3.2cm) hem on lower edge of pants. Press under 1/4" (6mm) on raw edge. Stitch close to inner pressed edge.





HALTER TOP C

RIGHT FRONT AND BACK

1. Pin one Front (15) section to one Back (17) section, RIGHT sides together at RIGHT side seam. Stitch.
2. For lining, pin one front Lining (15) section to one back Lining (17) section at RIGHT side seam. Stitch.
3. Pin lining to front and back, RIGHT sides together, matching center backs, dots and seams. Stitch front lower edge, as shown. Stitch upper edge. Trim seams.
4. **UNDERSTITCH** upper edge of lining. Turn RIGHT side out, matching notches; press. Baste raw edges together.
5. Press under 1/4" (6mm) on front edge. Press front edge to INSIDE along foldline to form casing. Stitch close to inner edge of casing, leaving ends free.

LEFT FRONT

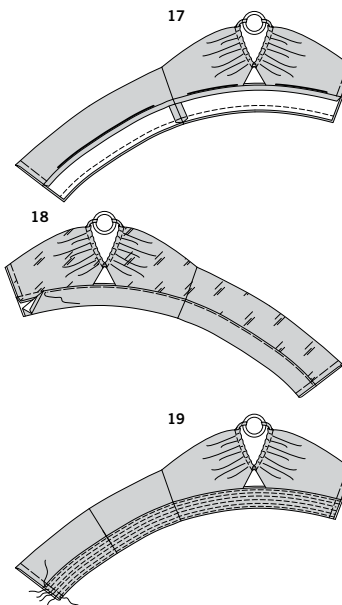
6. Pin remaining front to front Lining (15) section, right sides together, matching dots. Stitch front lower edge through large dot. Stitch upper edge. Trim seams.
7. **UNDERSTITCH** upper edge of lining. Turn RIGHT side out, press. Baste raw edges together.
8. Press under 1/4" (6mm) on front edge. Press front edge to INSIDE along foldline to form casing. Stitch close to inner edge of casing, leaving ends free.

DRAWSTRING

9. Fold Drawstring (16) in half lengthwise with WRONG sides together. Press, setting in a crease.
10. Open out long edges of drawstring and turn them to WRONG side so that they meet at the crease. Press.
11. Fold drawstring in half lengthwise, bringing pressed edges together. Stitch close to long edge.
12. Insert drawstring through casing in each front, having ends extending evenly.
13. Slip ends of drawstring through purchased ring, turning under 1" (2.5cm) on each end to form loop. Stitch across loop 1/2" (1.3cm) from fold. Insert loop ends of drawstring inside casing to stitching. Stitch across ends of casing, stitching through loops.

BAND

14. Apply **INTERFACING** to front Band (18) and back Band (19). Pin front band section to back band section at RIGHT side seam. (Uninterfaced band sections will be used as facing.)
15. Pin band to lower edge of halter, RIGHT sides together, matching center backs, RIGHT side seams and large dots. Stitch, trim seam. Press seam toward band, pressing under 5/8" (1.5cm) on upper edge of band between dots.
16. Pin front band Facing (18) to back band Facing (19) at RIGHT side seam. Press under 5/8" (1.5cm) on notched edge of facing. Trim pressed edge to 3/8" (1cm).

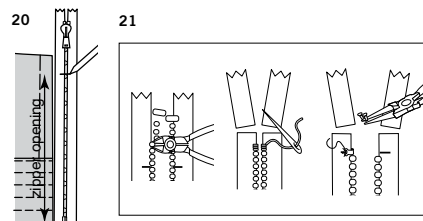


17. Pin facing to band, RIGHT sides together, matching centers and seams. Stitch lower edge. Trim seam.

18. Turn facing to inside; press. Baste facing in place close to pressed under edge. Baste raw edges together.

19. Edge-stitch close to upper and lower edge of band. Topstitch rows across band, spacing each 1/4" (6mm) apart.

ZIPPER



20. **NOTE:** It may be necessary to shorten zipper. To make new top stop, place zipper along left side opening edge, with bottom stop even with lower edge. Mark placement of new top stop 1/8" (3mm) from upper edge.

21. Bring pull tab below upper edge and remove teeth above marking for new zipper stop. Bend a straight metal eye with pliers and sew securely to each tape at new marking, or make several whip stitches across teeth above marking, as shown.

22. Press under 5/8" (1.5cm) on left side edges of halter.

23. With right sides up, pin pressed-under edges of halter over closed zipper, having folded edges meeting at center of zipper and bottom stop at lower edge. Hand-baste, turning under upper ends of zipper tapes. Open zipper. On OUTSIDE, stitch 1/4" (6mm) from side edges, continuing stitching to lower edge, using a zipper foot.

TIE

24. Stitch seam of Tie (14), matching notches. Fold tie in half lengthwise, RIGHT sides together. Stitch in a 1/4" (6mm) seam, leaving an opening for turning.

25. Turn RIGHT side out; press. Slip-stitch opening edges together.

26. Fold tie in half, having ends even. Wrap tie around ring, bringing ends through center of tie and ring, as shown.

27. Knot ends of tie. When wearing, tie ends in a bow.



Congrats!

You've completed your sewing adventure

SHARE YOUR LOOK



Post your pattern and tag us
@simplicity_creative_group and **#simplicitypatterns**
for a chance to be featured on our social media.

Look for more PDF patterns at [simplicity.com](https://www.simplicity.com)

Have a question or need help with your sewing project call us at
1-888-588-2700



Simplicity ©2023 a division of IG Design Group Americas Inc. • Atlanta, GA 30342 USA www.thedesigngroup.com • All Rights Reserved. www.simplicity.com • Made in the U.S.A. Fabriqué aux États-Unis.

To be used for individual private home use only and not for commercial or manufacturing purposes. • A usage privé seulement et non à des fins commerciales ou de production en série. • Para uso privado solamente, no se puede utilizar con propósitos de comercialización o de producción en serie.