

S9753

Simplicity



A



B



C



Average

MISSES' PANTS

Suggested Fabrics: Cotton Blends, Lightweight Twill, Lightweight Wool Blends, Linen Blends, Stretch Wovens. **Lining:** Cotton Blends, Polyester. **Interfacing:** Lightweight Fusible.

Notions: A,B,C: One 7" (18cm) zipper (cut to fit). **Also for A:** Two pants hook and bar closures. **Also for B,C:** One ¾" (2cm) button.

Sizes	4	6	8	10	12	14	16	18	20	22
European	30	32	34	36	38	40	42	44	46	48

BODY MEASUREMENTS: Select pattern size based on body measurements

Bust	29½	30½	31½	32½	34	36	38	40	42	44	Ins.
Waist	22	23	24	25	26½	28	30	32	34	37	"
Hip-9" below waist	31½	32½	33½	34½	36	38	40	42	44	46	"
Back-neck to waist	15¼	15½	15¾	16	16¼	16½	16¾	17	17¼	17½	"

Lining A,B,C - 45* - ¾ yd. Interfacing A,B,C - 20" - ¾ yd.**

Pants A	45**	2%	2%	2%	2%	2%	2¾	2%	3	3%	3%	Yds.
	60**	2¼	2%	2½	2½	2½	2½	2%	2%	2%	2%	"
Pants B	45**	2½	2½	2½	2%	2¾	2%	2%	3¼	3¼	Yds.	
	60**	2%	2¼	2¼	2¼	2%	2%	2%	2%	2%	"	
Pants C	45**	2%	2%	2¼	2¼	2¼	2½	2%	2¾	2¾	Yds.	
	60**	1¾	1¾	1¾	1¾	2	2%	2%	2%	2%	"	

FINISHED GARMENT MEASUREMENTS (Includes Design and Wearing Ease)

A,B,C Waist	24	25	26	27	28½	30½	32½	34½	36½	38½	Ins.
A,B,C Hip	37½	38½	39½	40½	42	44	46	48	50	52	"
Width, each leg											
Pants A	23½	24	24½	25	25½	26	26½	27	27½	28	Ins.
Pants B	18½	19	19½	20	20½	21	21½	22	22½	23	"
Pants C	20½	21	21½	22	22½	23	23¼	24	24½	25	"
Finished side length from waist											
Pants A,B	41¼	41½	41¾	42	42¼	42½	42¾	43	43¼	43½	Ins.
Pants C	33¼	33½	33¾	34	34¼	34½	34¾	35	35¼	35½	"

*with nap **without nap

Moins Facile

PANTALONS POUR JEUNES FEMMES

Tissu Conseillés: Cotonnades, Twill léger, Lainages légers, Lin mélangés, Tissus tissés extensibles. **Doubleure:** Cotonnades, Polyester. **Entoilage:** Thermocollant léger.

Mercerie: A,B,C: 1 fermeture à glissière de 18cm (coupée pour ajuster). **Aussi pour A:** 2 agrafes pour pantalons. **Aussi pour B,C:** 1 bouton de 2cm.

Tailles	4	6	8	10	12	14	16	18	20	22
Françaises	32	34	36	38	40	42	44	46	48	50
Européen	30	32	34	36	38	40	42	44	46	48

MESURES DU CORPS: Choisissez la taille du patron basée sur les mesures du corps

Poitrine	75	78	80	83	87	92	97	102	107	112	cm
Taille	56	58	61	64	67	71	76	81	87	94	"
Hanches (23cm au-dessous de la taille)	80	83	85	88	92	97	102	107	112	117	cm
Dos du cou à la taille	38.5	39.5	40	40.5	41.5	42	42.5	43	44	44	"

Doubleure A,B,C - 115cm - 0.4m. Entoilage A,B,C - 51cm - 0.7m.**

Pantalon A	115cm*	2.4	2.4	2.4	2.4	2.4	2.6	2.7	2.8	2.8	2.9	m
	150cm*	2.1	2.2	2.3	2.3	2.3	2.3	2.4	2.4	2.4	"	
Pantalon B	115cm*	2.3	2.3	2.3	2.4	2.4	2.6	2.6	2.7	3.0	3.0	m
	150cm*	2.0	2.1	2.1	2.1	2.1	2.2	2.4	2.4	2.4	"	
Pantalon C	115cm*	2.0	2.0	2.0	2.1	2.1	2.2	2.3	2.4	2.6	2.6	m
	150cm*	1.6	1.6	1.6	1.8	1.8	1.9	2.0	2.0	2.0	"	

MESURES DES VÊTEMENTS FINI (Motif et aisance de port compris)

A,B,C Taille	61	64	66	69	72	77	83	88	93	98	cm
A,B,C Hanches	95	98	100	103	107	112	117	122	127	132	"
Largeur, chaque jambe											
Pantalon A	60	61	62	64	65	66	67	68	70	71	cm
Pantalon B	47	48	50	51	52	53	55	56	57	58	"
Pantalon C	52	53	55	56	57	58	60	61	62	64	"
Longueur finie - côté, taille à l'ourlet											
Pantalon A,B	105	105	106	107	107	108	109	109	110	110	cm
Pantalon C	84	85	86	86	87	88	88	89	90	90	"

*avec sens **sans sens



A

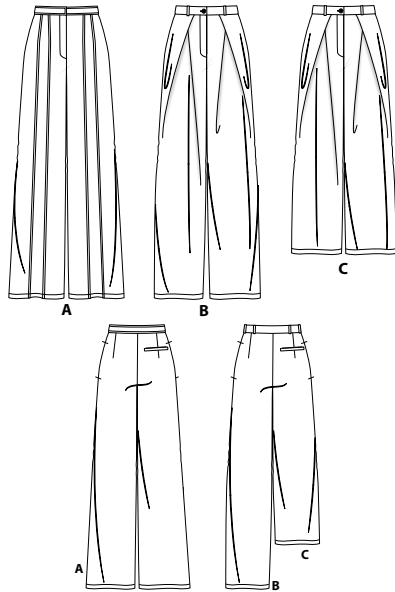


B

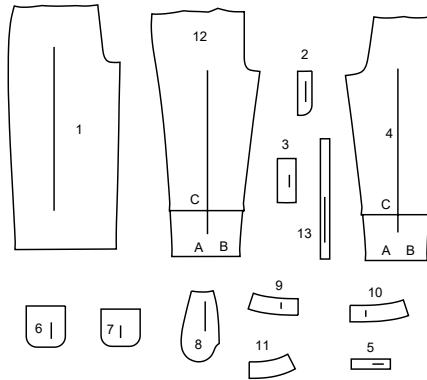
C

Simplicity

Thank you for purchasing this Simplicity pattern. We made every effort to provide you with a high quality product.



13 PIECES



- 1 FRONT - A
- 2 RIGHT FLY FACING - A,B,C
- 3 LEFT FLY - A,B,C
- 4 BACK - A,B,C
- 5 WELT - A,B,C
- 6 BACK POCKET - A,B,C
- 7 BACK POCKET FACING - A,B,C
- 8 POCKET - A,B,C
- 9 RIGHT FRONT WAISTBAND - A,B,C
- 10 LEFT FRONT WAISTBAND - A,B,C
- 11 BACK WAISTBAND - A,B,C
- 12 FRONT - B,C
- 13 CARRIERS - B,C

General Directions

The Pattern

- SYMBOLS**
- GRAIN LINE: Place on straight grain of fabric parallel to selvage
 - PLACE SOLID LINE on fold of fabric.
 - CENTER FRONT OR BACK OF garment.
 - NOTCHES
 - DOTS
 - CUTTING LINE
 - LENGTHEN OR SHORTEN LINES

SEAM ALLOWANCE: 5/8" (1.5cm) unless otherwise stated is included but not printed on MULTI-SIZE PATTERNS. Mark your size with colored felt tip pen. See chart on tissue for how to use MULTI-SIZE PATTERNS.

ADJUST IF NEEDED
Make adjustments before placing pattern on fabric.

TO LENGTHEN:
Cut pattern between lengthen or shorten lines. Spread pattern evenly, the amount needed and tape to paper.

TO SHORTEN:
At lengthen or shorten lines, make an even pleat taking up amount needed. Tape in place.

When lengthen or shorten lines are not given, make adjustments at lower edge of pattern.

Cutting/Marking

BEFORE CUTTING:
PRESS pattern pieces with a warm dry iron. PRE-SHRINK fabric by pre-washing washables or steam-pressing non-washables.

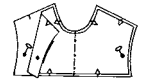
CIRCLE your cutting layout.
PIN pattern to fabric as shown in Cutting Layouts.

- FOR DOUBLE THICKNESS: Fold fabric with RIGHT sides together.
- FOR SINGLE THICKNESS: Place fabric RIGHT side up.
- FOR PILE, SHADED OR ONE WAY DESIGN FABRICS: Use "with nap" layouts

AFTER CUTTING:
Transfer markings to WRONG side of fabric before removing pattern. Use pin and chalk method or dressmaker's tracing paper and wheel.

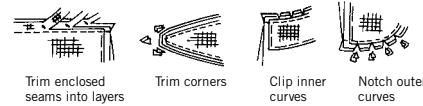
To Quick Mark:

- Snip edge of fabric to mark notches, ends of fold lines and center lines.
- Pin mark dots.



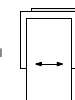
Sewing

- SEW garment following Sewing Directions.
- PIN or machine-baste seams matching notches.
- STITCH 5/8" (1.5 cm) seams unless otherwise stated.
- PRESS seams open unless otherwise indicated clipping when necessary so seams will lie flat.
- TRIM seams to reduce bulk, as shown below.



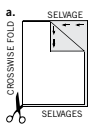
SPECIAL CUTTING NOTES

★ If layout shows a piece extending past fold, cut out all pieces except piece that extends.

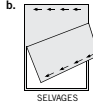


Open out fabric to single thickness. Cut extending piece on RIGHT side of fabric in position shown.

✳ Mark small arrows along both selvages indicating direction of nap or design. Fold fabric crosswise with RIGHT sides together, and cut along fold (a).



Turn one fabric layer around so arrows on both layers go in the same direction. Place RIGHT sides together (b).



Cutting Layouts

- WRONG SIDE OF FABRIC
- RIGHT SIDE OF FABRIC
- PATTERN PIECE WITH PRINTED SIDE UP
- PATTERN PIECE WITH PRINTED SIDE DOWN
- ★ SEE SPECIAL CUTTING NOTES

POSITION OF PATTERN PIECES MAY VARY SLIGHTLY ACCORDING TO YOUR PATTERN SIZE

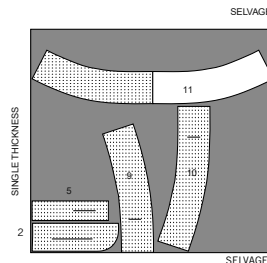
LINING A,B,C

USE PIECE 7
45" (115CM) WITHOUT NAP
ALL SIZES



INTERFACING A,B,C

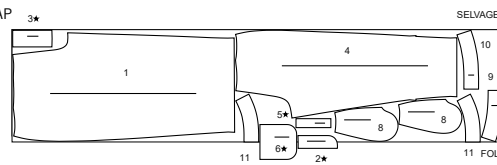
USE PIECES 2 5 9 10 11
20" (51CM)
ALL SIZES



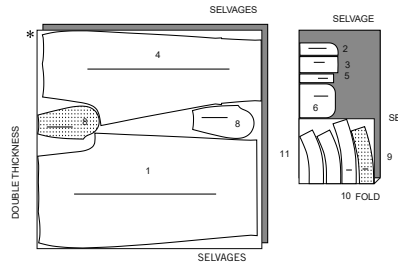
PANTS A

USE PIECES 1 2 3 4 5 6 8 9 10 11

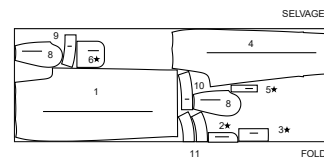
45" (115CM) WITH NAP
SIZES 4 6 8 10 12 14 16



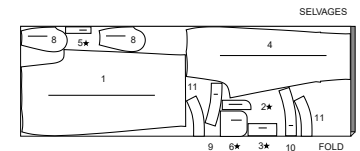
45" (115CM) WITH NAP
SIZES 18 20 22



60" (150CM) WITH NAP
SIZES 4 6 8



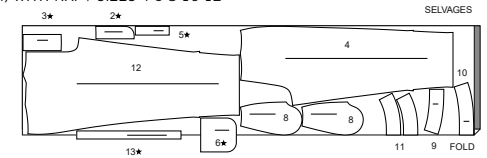
60" (150CM) WITH NAP
SIZES 10 12 14 16 18 20 22



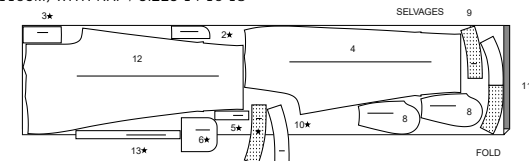
PANTS B

USE PIECES 2 3 4 5 6 8 9 10 11 12 13

45" (115CM) WITH NAP / SIZES 4 6 8 10 12

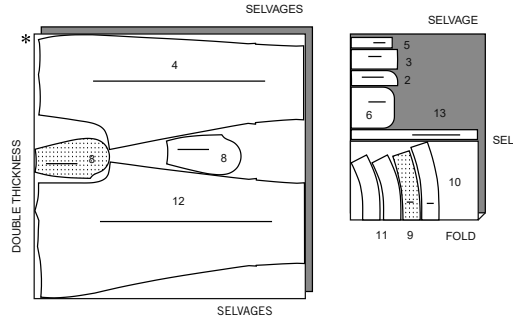


45" (115CM) WITH NAP / SIZES 14 16 18

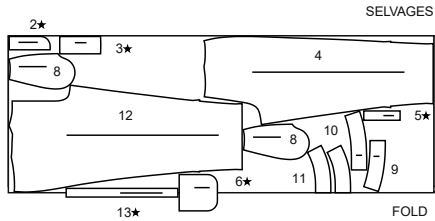


CUTTING LAYOUTS CONTINUED ON PAGE 2

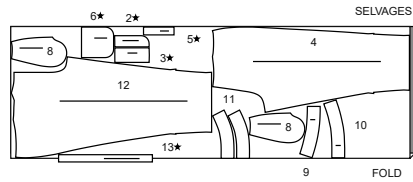
45° (115CM)
WITH NAP
SIZES 20 22



60° (150CM)
WITH NAP
SIZES 4 6 8 10 12 14



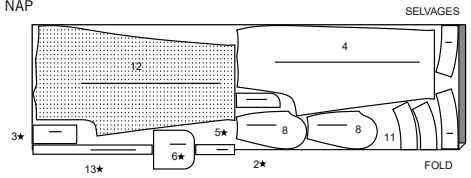
60° (150CM)
WITH NAP
SIZES 16 18 20 22



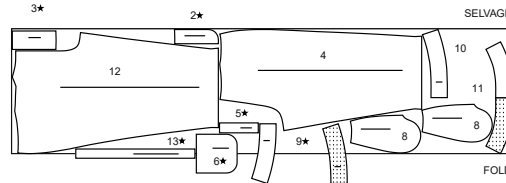
PANTS C

USE PIECES 2 3 4 5 6 8 9 10 11 12 13

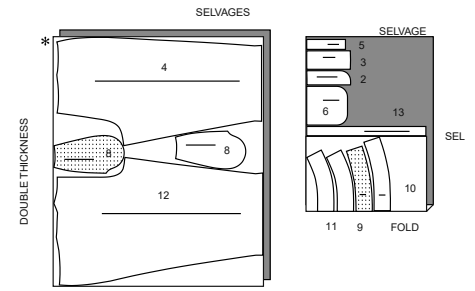
45° (115CM) WITH NAP
SIZES 4 6 8 10 12



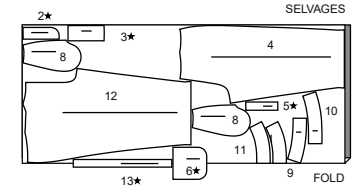
45° (115CM) WITH NAP
SIZES 14 16 18



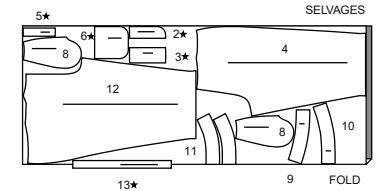
45° (115CM)
WITH NAP
SIZES 20 22



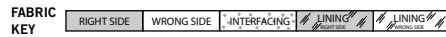
60° (150CM)
WITH NAP
SIZES 4 6 8 10 12 14



60° (150CM)
WITH NAP
SIZES 16 18 20 22



Sewing Directions



Read **General Directions** on page 1 before you begin.
Sewing methods shown in *ITALICS* are defined below:

OPTIONAL FOR HEMS: Apply Seam Binding.

INTERFACING- Pin interfacing to **WRONG** side of fabric. Fuse interfacing in place following manufacturer's directions.

TOPSTITCH - On **OUTSIDE**, stitch 1/4" (6mm) from finished edge or fold.

UNDERSTITCH- Press facing and seam away from garment, stitching through facing and seam allowances close to seam.

PATTERN PIECES WILL BE IDENTIFIED BY NUMBERS THE FIRST TIME THEY ARE USED.

STITCH SEAMS WITH RIGHT SIDES TOGETHER UNLESS OTHERWISE STATED.

PANTS A, B, C

INTERFACING

1. Trim corners from **INTERFACING**, as shown. Fuse to wrong side of each matching **FABRIC** section, following manufacturer's instructions.

FRONT

VIEW A

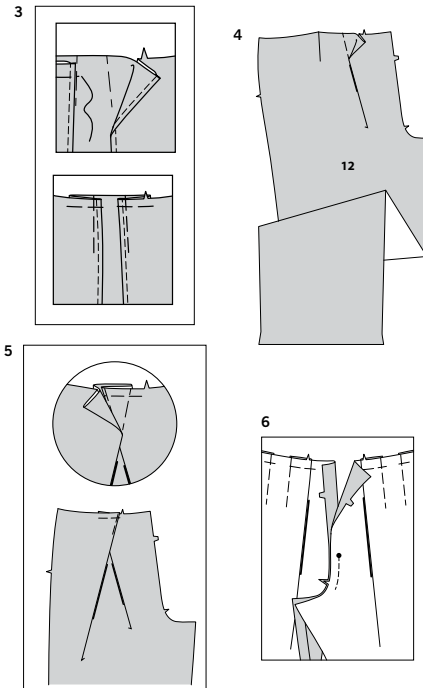
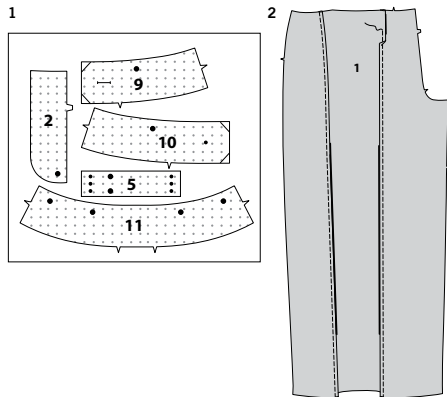
2. Fold Front (1) along fold lines, **WRONG** sides together. Topstitch along fold.

SEWING TUTORIALS



SCAN ME

Build your skills viewing short, easy-to-follow videos at simplicity.com/sewingtutorials



3. To make pleats in front, bring solid lines to broken lines. Baste. Baste across upper edge.

VIEWS B, C

4. To make inner pleat in Front (12), on **OUTSIDE**, crease along solid line. Bring crease to broken line toward side. Baste. Baste across upper edge.

5. To make outer pleat in front, on **OUTSIDE**, crease along solid line. Bring solid line to broken line toward center, (overlapping first pleat). Baste. Baste across upper edge.

VIEWS A, B, C

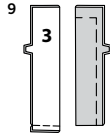
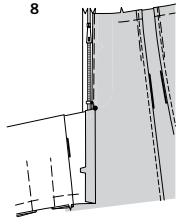
Construct fly front as follows:

6. Stitch front sections together at center front between large dot and notch.



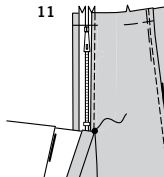
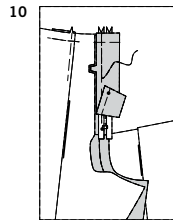
7. Turn in left front opening edge along foldline; press.

NOTE: It may be necessary to shorten zipper. To make new zipper stop, place zipper along opening edge (with pull tab 1/8" (3mm) below seamline). Mark placement of new zipper stop. Whipstitch across teeth at marking. Cut zipper 3/4" (2cm) below the new stop.



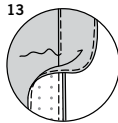
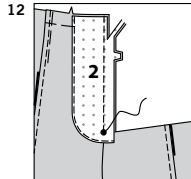
8. Place closed zipper (face up) under LEFT front opening edge, having pressed edge close to zipper teeth and zipper stop at small dot. Using a zipper foot, baste close to pressed edge.

9. With RIGHT sides together, fold Left fly (3) along foldline. Stitch lower edge. Trim. Turn. Press. Baste raw edges.



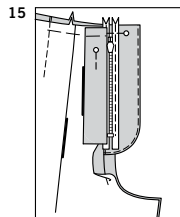
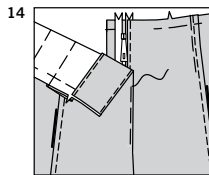
10. On INSIDE, pin left fly to LEFT front opening edge (over zipper), matching notches and small dots, having raw edges even. Baste along previous basting for zipper.

11. On OUTSIDE, using a zipper foot, stitch close to pressed edge of front, through all layers.



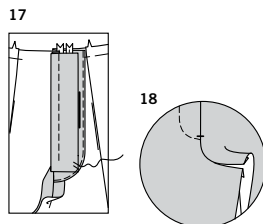
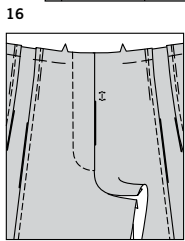
12. EDGE FINISH outer edge of Right fly facing (2). Pin fly facing to RIGHT front opening edge, matching notches and large dots. Stitch, ending at large dot. Trim.

13. UNDERSTITCH fly facing.



14. Turn facing to INSIDE; press. Lap RIGHT front over LEFT, matching centers. Baste close to edge through all thicknesses.

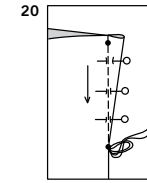
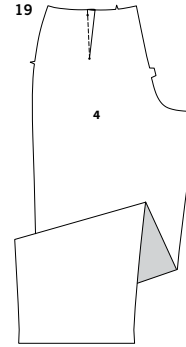
15. Pin left fly out of the way. Open out fly facing. Pin remaining zipper tape to fly facing, keeping RIGHT front free. Using a zipper foot, stitch in place close to zipper teeth.



16. Turn facing down. On OUTSIDE, stitch RIGHT front along stitching line, keeping left fly free.

17. Turn left fly back in place. On INSIDE, hand tack fly and facing together at lower edge, as shown.

18. If desired, on OUTSIDE, machine-stitch a bar-tack across lower end of fly through all thicknesses.

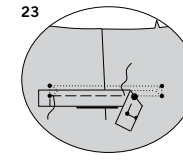
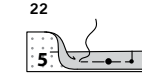


BACK DARTS

19. To make darts in Back (4), with RIGHT sides together, fold the pants through the center of the dart, bringing broken lines and small dots together.

20. On INSIDE, place pins at RIGHT angles to the broken lines. Stitch the dart from wide end to point.

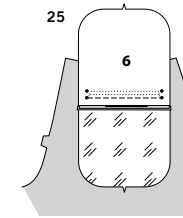
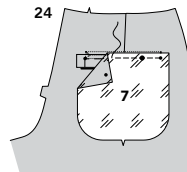
TIP - To prevent a "bubble" at the point, make the last few stitches right on the fold and leave the thread ends long enough to tie a knot. DO NOT back-stitch at the point. Press the dart flat along the stitching to "blend" the stitches, then press dart toward center back.



WELT POCKET

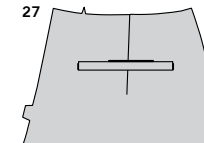
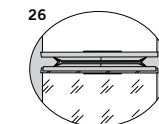
21. Reinforce corners of RIGHT pants back by along stitching lines, pivoting at small dots, as shown.

22. With RIGHT sides together, fold Welt (5) in half lengthwise; baste raw edges.



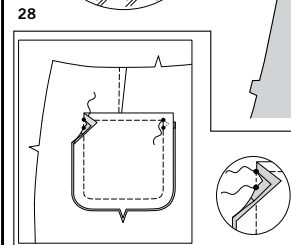
23. Pin welt to RIGHT back, placing 3/8" (1cm) seamline along lower stitching line, matching small and large dots. Baste.

24. With RIGHT sides together, pin Back pocket facing (7) to back (over welt), placing 3/8" (1cm) seamline to stitching line, matching small and large dots. Stitch along stitching line between small dots.

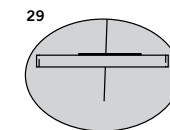


25. Pin Back pocket (6) to back along remaining stitching line, keeping back pocket facing seam allowance free. Stitch along stitching line between small dots.

26. Slash along line between stitching, clipping diagonally to small dots, being careful not to cut welt.



27. Turn pockets and triangular ends to inside, turning welt up; press.

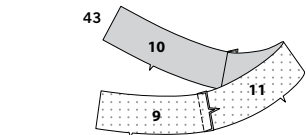
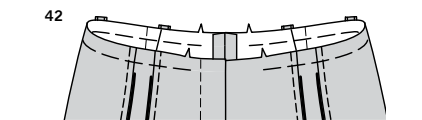
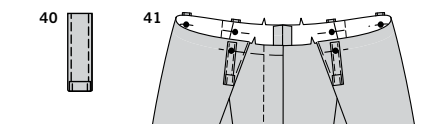
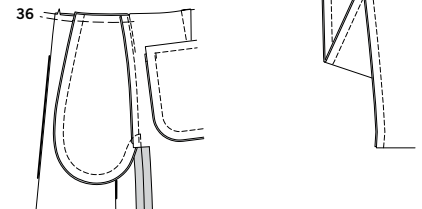
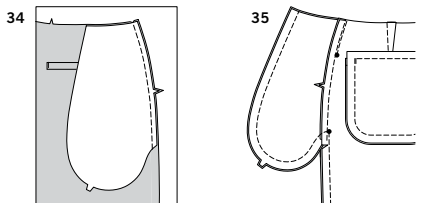
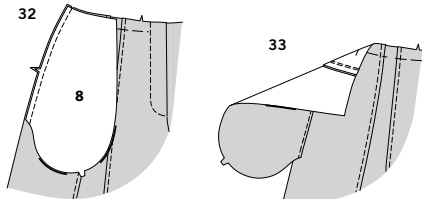
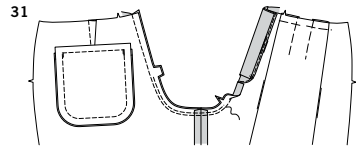


28. Stitch pocket and pocket facing edges together, matching notches, catching welt and triangular ends in stitching; keeping back free.

29. EDGESTITCH ends of welt in place, through all thicknesses.

REMAINING SEAMS AND POCKETS

30. Stitch back to front together at inner leg.



31. Stitch remainder of crotch seam to large dot in front, connecting with previous stitching. Stitch again 1/4" (6mm) away in seam allowance between notches. Trim close to second stitching.

NOTE: Apply pockets to side edges of front and back as follows:

32. With RIGHT sides together, pin one Pocket (8) section to side edges of front, matching notches, having raw edges even. Stitch in 3/8" (1cm) seam.

33. Press seam toward pocket, pressing pocket out. **UNDERSTITCH** front pockets.

34. With RIGHT sides together, pin one pocket section to side edges of back, matching notches, having raw edges even. Stitch in 3/8" (1cm) seam.

35. Pin front to back at side seams, matching large dots. Stitch side seams, leaving free between large dots. Stitch pocket edges together to side seams. Clip back seam allowances below pockets.

36. Press seam open below clip. Press pockets toward front; baste upper edges.

WAISTBAND

VIEWS B, C

37. Fold Carriers (13) in half, lengthwise with WRONG sides together. Press, setting in a crease.

38. Open out long edges of carrier and turn them to WRONG side so that they meet at the crease. Press.

39. Fold carrier in half lengthwise, bringing pressed edges together. Stitch close to both long edges. Cut carriers into six sections, each 3-1/2" (9cm) long.

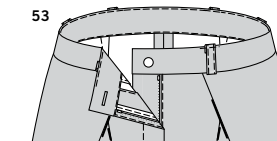
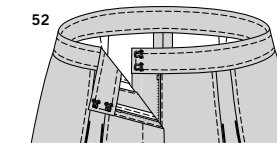
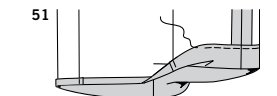
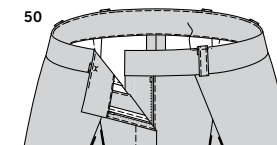
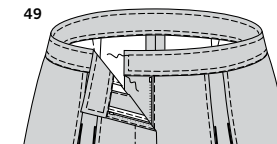
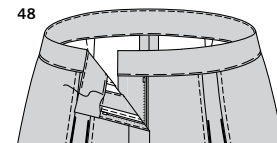
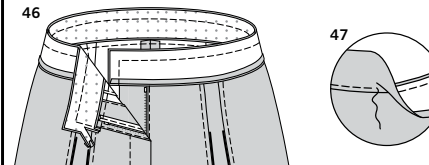
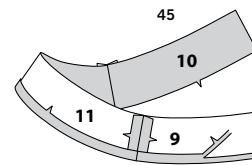
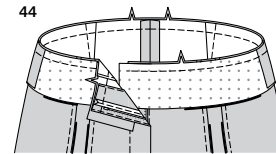
40. Turn in 5/8" (1.5cm) on one end; press.

41. Pin carriers to upper edge of pants, centering over large dots, having raw edges even; baste.

VIEWS A, B, C

42. **STAYSTITCH** upper edge of pants between front notches.

43. Stitch interfaced Right front waistband (9) and interfaced Left front waistband (10) to interfaced Back waistband (11) at sides, matching notches. (Uninterfaced waistband sections will be used as facing.)



44. Pin waistband to upper edge of pants, RIGHT sides together, matching notches, centers and side seams, clipping pants where necessary; stitch. Trim seam; press toward waistband.

45. Stitch right front waistband FACING (9) and left front waistband FACING (10) to back waistband FACING (11) at sides, matching notches. Press under 5/8" (1.5cm) on lower edge of facing. Trim pressed edge to 3/8" (1cm).

46. Pin facing to waistband, RIGHT sides together, matching centers and seams. Stitch ends and upper edge; trim seams.

47. **UNDERSTITCH** facing as far as possible.

48. Turn facing to inside; press. Baste facing in place just over seam.

49. To hold facing in place, on OUTSIDE, spread waistband seam with fingers until previous stitching is visible. Stitch on top of previous stitching. **TOPSTITCH** waistband, as shown.

VIEWS B, C

50. Turn carriers up. Pin to upper edge of waistband, centering over dots. **EDGESTITCH** in place, through all thicknesses.

FINISHING

HEMS

51. Press up 1-1/4" (3.2cm) hem on lower edge of pants. Press under 1/4" (6mm) on raw edge. Stitch close to inner pressed edge.

HOOKS AND EYES A

52. On INSIDE, sew hook closures to right end of waistband at upper and lower edges. Lap RIGHT front over LEFT, matching centers. Mark and sew eyes to waistband at markings.

BUTTONHOLE AND BUTTON B, C

53. Make buttonhole in RIGHT waistband at marking. Sew button to LEFT waistband at small dot.



Congrats!

You've completed your sewing adventure

**SHARE
YOUR** LOOK



Post your pattern and tag us
@simplicity_creative_group and **#simplicitypatterns**
for a chance to be featured on our social media.

Look for more PDF patterns at [simplicity.com](https://www.simplicity.com)

Have a question or need help with your sewing project call us at
1-888-588-2700



Simplicity ©2023 a division of IG Design Group Americas Inc. • Atlanta, GA 30342 USA www.thedesigngroup.com • All Rights Reserved. www.simplicity.com • Made in the U.S.A. Fabriqué aux États-Unis.

To be used for individual private home use only and not for commercial or manufacturing purposes. • A usage privé seulement et non à des fins commerciales ou de production en série. • Para uso privado solamente, no se puede utilizar con propósitos de comercialización o de producción en serie.