

S9748

Simplicity



A



B



C



D

Designed and printed in USA.



Average

Moins Facile

MISSES' TOP WITH SLEEVE VARIATIONS

Suggested Fabrics: Batiks, Chambray, Cottons, Gauze, Rayons, Silky Types, Voile.

Interfacing: Lightweight Fusible.

Notions: B,C: 1 yd. (1.0m) of ¼" (1cm) elastic. **Also for C:** One pkg. of ½" (1.3cm) single fold bias tape, four ½" (1.3cm) buttons. **D:** One pkg. of ½" (1.3cm) single fold bias tape.

Sizes	6	8	10	12	14	16	18	20	22	24
European	32	34	36	38	40	42	44	46	48	50

BODY MEASUREMENTS: Select pattern size based on body measurements

Bust	30½	31½	32½	34	36	38	40	42	44	46	Ins.
Waist	23	24	25	26½	28	30	32	34	37	39	"
Hip-9" below waist	32½	33½	34½	36	38	40	42	44	46	48	"
Back-neck to waist	15½	15¾	16	16¼	16½	16¾	17	17¼	17½	17¾	"

Interfacing A,B,C,D

20"	¼	¼	¼	¼	¼	¼	¼	¼	¼	¼	¼	Yd.
Top A	45**	2%	2%	2%	2%	2%	2¼	2¼	2¼	2¼	2¼	Yds.
	60**	1½	1½	1½	1½	1½	1¾	1¾	1¾	1¾	1¾	"
Top B	45**	2½	2½	2½	2½	2½	2¾	2¾	2¾	2¾	2¾	Yds.
	60**	1%	1¾	1¾	1¾	1¾	1%	1%	1%	2%	2¼	"
Top C	45**	2¼	2¼	2¼	2¼	2%	2%	2%	2%	2½	2½	Yds.
	60**	1½	1½	1%	1%	1%	1%	1%	1%	2	2	"
Top D	45**	1%	1%	1%	1%	¼	1%	1¾	1¾	1¾	1¾	Yds.
	60**	1¼	1¼	1¼	1¼	1¼	1%	1%	1%	1%	1%	"

FINISHED GARMENT MEASUREMENTS (Includes Design and Wearing Ease)

A,B,C,D Bust	36½	37½	38½	40	42	44	46	48	50	52	Ins.
Width, lower edge											
Top A,B	47	48	49	50½	52½	54½	56½	58½	60½	62½	Ins.
Top C,D	46	47	48	49½	51½	53½	55½	57½	59½	61½	"
Finished back length from base of neck											
Top A,B	24½	24¾	25	25¼	25½	25¾	26	26¼	26½	26¾	Ins.
Top C,D	21½	21¾	22	22¼	22½	22¾	23	23¼	23½	23¾	"

*with nap **without nap

HAUT AVEC VARIATIONS DE MANCHES POUR JEUNES FEMMES

Tissus Conseillés: Batiks, Chambray, Cotons, Gaze, Rayonnes, Tissus soyeux, Voile.

Entoilage: Thermocollant léger.

Mercerie: B,C: 1.0m d'élastique de 1cm. **Aussi pour C:** 1 paquet de ruban de biais simple de 1.3cm, 4 boutons de 1.3cm. **D:** 1 paquet de ruban de biais simple de 1.3cm.

Tailles	6	8	10	12	14	16	18	20	22	24
Françaises	34	36	38	40	42	44	46	48	50	52
Européen	32	34	36	38	40	42	44	46	48	50

MESURES DU CORPS: Choisissez la taille du patron basée sur les mesures du corps

Poitrine	78	80	83	87	92	97	102	107	112	117	cm
Taille	58	61	64	67	71	76	81	87	94	99	"
Hanches (23cm au-dessous de la taille)	83	85	88	92	97	102	107	112	117	122	cm
Dos du cou à la taille	39.5	40	40.5	41.5	42	42.5	43	44	44	44.5	"

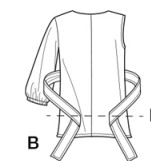
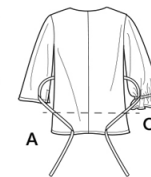
Entoilage A,B,C,D

51cm	0.6	0.6	0.6	0.6	0.6	0.6	0.6	0.6	0.6	0.7	m
Haut A	115cm*	2.0	2.0	2.0	2.0	2.0	2.1	2.1	2.1	2.1	m
	150cm*	1.4	1.4	1.4	1.5	1.5	1.6	1.6	1.6	1.6	"
Haut B	115cm*	2.3	2.3	2.3	2.4	2.4	2.6	2.6	2.6	2.7	m
	150cm*	1.5	1.6	1.6	1.6	1.6	1.8	1.8	2.0	2.1	"
Haut C	115cm*	2.1	2.1	2.1	2.1	2.1	2.2	2.2	2.2	2.3	m
	150cm*	1.4	1.4	1.4	1.5	1.5	1.5	1.5	1.8	1.9	"
Haut D	115cm*	1.5	1.5	1.5	1.5	1.5	1.5	1.6	1.6	1.6	m
	150cm*	1.2	1.2	1.2	1.2	1.2	1.3	1.3	1.3	1.3	"

MESURES DES VÊTEMENTS FINI (Motif et aisance de port compris)

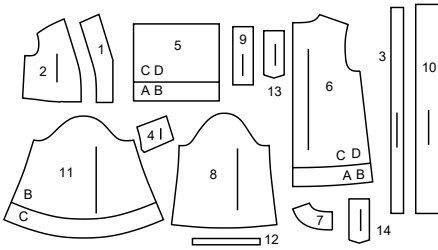
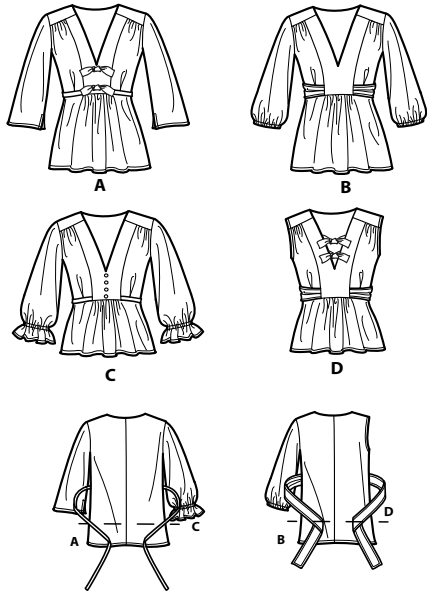
A,B,C,D Poitrine	93	95	98	102	107	112	117	122	127	132	cm
Largeur à l'ourlet											
Haut A,B	119	122	124	128	133	138	144	149	154	159	cm
Haut C,D	117	119	122	126	131	136	141	146	151	156	"
Longueur finie – dos, votre nuque à l'ourlet											
Haut A,B	62	63	64	64	65	65	66	67	67	68	cm
Haut C,D	55	55	56	57	57	58	58	59	60	60	"

*avec sens **sans sens



Simplicity®

Thank you for purchasing this Simplicity pattern. We made every effort to provide you with a high quality product.



- 1 UPPER FRONT-A, B, C, D
- 2 UPPER SIDE FRONT - A, B, C, D
- 3 TIE END-A, C
- 4 YOKE FRONT - A, B, C, D
- 5 LOWER FRONT - A, B, C, D
- 6 BACK - A, B, C, D
- 7 BACK FACING - A, B, C, D
- 8 SLEEVE - A
- 9 BOW TIE - A
- 10 TIE END - B, D
- 11 SLEEVE - B, C
- 12 GUIDE FOR ELASTIC - B, C
- 13 UPPER BOW - D
- 14 LOWER BOW - D

General Directions

The Pattern

- SYMBOLS**
- GRAIN LINE Place on straight grain of fabric parallel to selvage
 - PLACE SOLID LINE on fold of fabric.
 - CENTER FRONT OR BACK of garment.
 - NOTCHES
 - DOTS
 - CUTTING LINE
 - LENGTHEN OR SHORTEN LINES
- SEAM ALLOWANCE: 5/8" (1.5cm) unless otherwise stated is included but not printed on MULTI-SIZE PATTERNS. Mark your size with colored felt tip pen. See chart on tissue for how to use MULTI-SIZE PATTERNS.

- ADJUST IF NEEDED**
- Make adjustments before placing pattern on fabric.
- TO LENGTHEN:** Cut pattern between lengthen or shorten lines. Spread pattern evenly, the amount needed and tape to paper.
- TO SHORTEN:** At lengthen or shorten lines, make an even pleat taking up amount needed. Tape in place.
- When lengthen or shorten lines are not given, make adjustments at lower edge of pattern.

Cutting/Marking

- BEFORE CUTTING:**
- PRESS pattern pieces with a warm dry iron. PRE-SHRINK fabric by pre-washing washables or steam-pressing non-washables.
- CIRCLE your cutting layout.
- PIN pattern to fabric as shown in Cutting Layouts.
- FOR DOUBLE THICKNESS: Fold fabric with RIGHT sides together.
 - FOR SINGLE THICKNESS: Place fabric RIGHT side up.
 - FOR PILE, SHADED OR ONE WAY DESIGN FABRICS: Use "with nap" layouts

- AFTER CUTTING:**
- Transfer markings to WRONG side of fabric before removing pattern. Use pin and chalk method or dressmaker's tracing paper and wheel.
- To Quick Mark:**
- Snip edge of fabric to mark notches, ends of fold lines and center lines.
 - Pin mark dots.

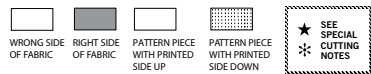
Sewing

- SEW garment following **Sewing Directions**.
 - PIN or machine-baste seams matching notches.
 - STITCH 5/8" (1.5 cm) seams unless otherwise stated.
 - PRESS seams open unless otherwise indicated clipping when necessary so seams will lie flat.
 - TRIM seams to reduce bulk, as shown below.
-

SPECIAL CUTTING NOTES

- ★ If layout shows a piece extending past fold, cut out all pieces except piece that extends.
 - ✱ Mark small arrows along both selvages indicating direction of nap or design. Fold fabric crosswise with RIGHT sides together, and cut along fold (a).
- Open out fabric to single thickness. Cut extending piece on RIGHT side of fabric in position shown.
-

Cutting Layouts

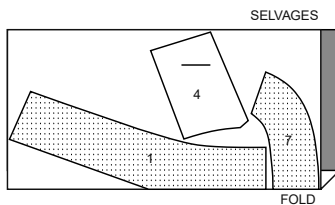


POSITION OF PATTERN PIECES MAY VARY SLIGHTLY ACCORDING TO YOUR PATTERN SIZE

INTERFACING A, B, C, D

USE PIECES 1 4 7

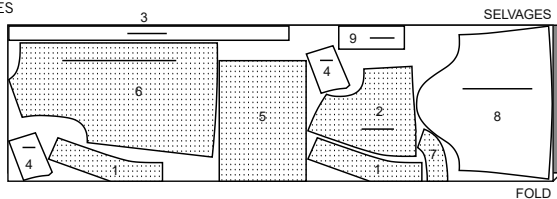
20" (51CM) ALL SIZES



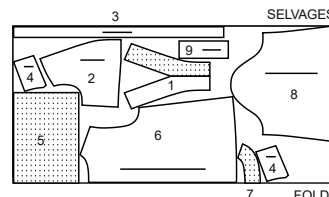
TOP A

USE PIECES 1 2 3 4 5 6 7 8 9

45" (115CM) WITH NAP ALL SIZES



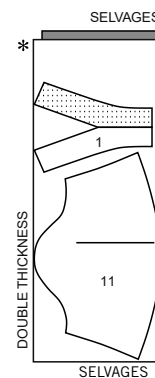
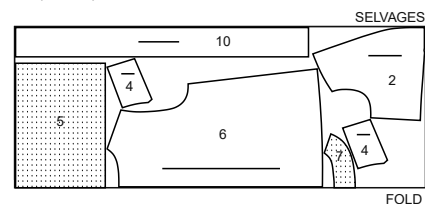
60" (150CM) WITH NAP ALL SIZES



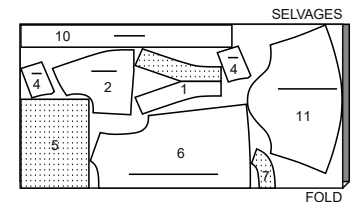
TOP B

USE PIECES 1 2 4 5 6 7 10 11

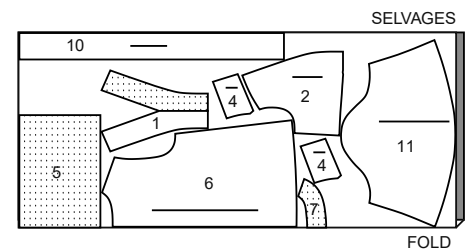
45" (115CM) WITH NAP / ALL SIZES



60" (150CM) WITH NAP SIZES 6 8 10 12 14 16 18 20



60" (150CM) WITH NAP SIZES 22 24

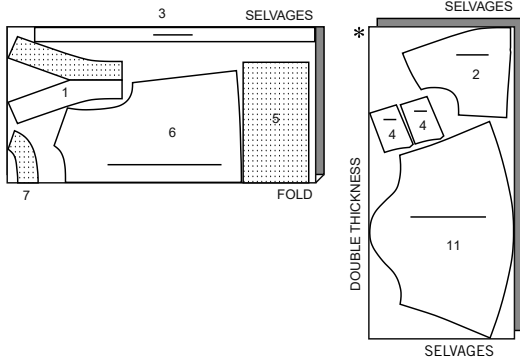


CUTTING LAYOUTS CONTINUED ON PAGE 2

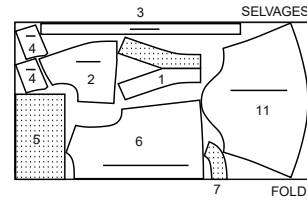
TOP C

USE PIECES 1 2 3 4 5 6 7 11

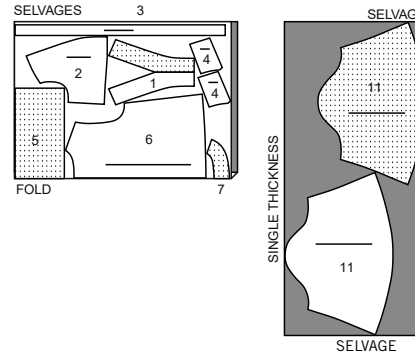
45° (115CM)
WITH NAP
ALL SIZES



60° (150CM)
WITH NAP
SIZES 6 8 10 12 14 16 18 20



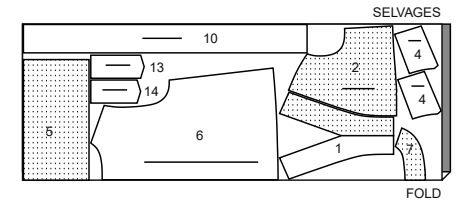
60° (150CM)
WITH NAP
SIZES 22 24



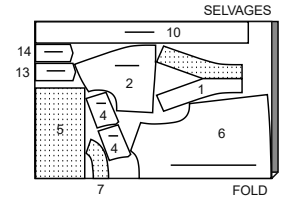
TOP D

USE PIECES 1 2 4 5 6 7 10 13 14

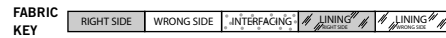
45° (115CM)
WITH NAP
ALL SIZES



60° (150CM)
WITH NAP
ALL SIZES



Sewing Directions



Read **General Directions** on page 1 before you begin.

Sewing procedures **ITALICIZED** in Sewing Directions are defined below.

EASE/GATHER- Loosen needle tension slightly. With **RIGHT** side up, stitch along seam line and 1/4" (6mm) **INSIDE** seam line, using a long machine-stitch.

INTERFACING- Pin interfacing to **WRONG** side of fabric. Fuse interfacing in place following manufacturer's directions.

NARROW HEM- Press under hem allowance as indicated on tissue pattern. To form narrow hem, tuck under raw edge to meet crease. Press. Stitch hem in place.

STAY-STITCH- Stitch 1/2" (1.3cm) from cut edge in direction of arrows. This stitching stays in permanently to prevent stretching on curved edges. (Shown only in the first illustration).

UNDERSTITCH- Press section as indicated in sewing directions and seam away from garment, stitching through section and seam allowances close to seam.

PATTERN PIECES WILL BE IDENTIFIED BY NUMBERS THE FIRST TIME THEY ARE USED.

STITCH SEAMS WITH RIGHT SIDES TOGETHER UNLESS OTHERWISE STATED.

TOP A, B, C, D

NOTE: For View D- trim away 1/4" (6mm) from armhole edge of upper side front, yoke front and back sections before stitching seams.

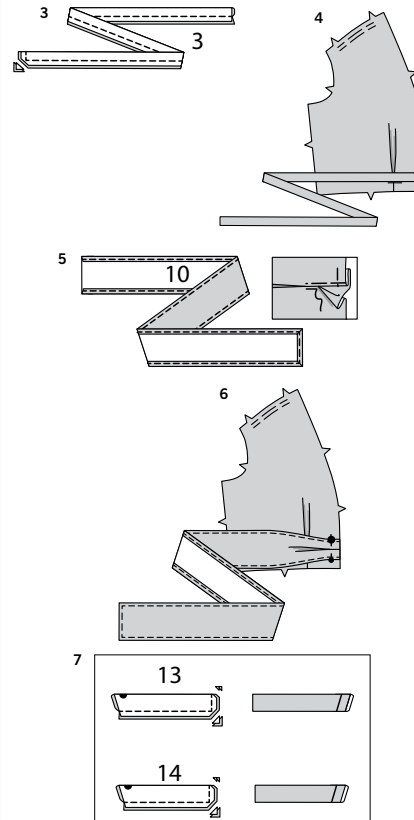
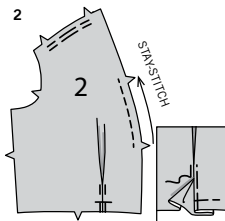
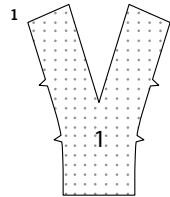
1. Apply **INTERFACING** to one upper front (1) section. This section will be used as the upper front; the remaining upper front section will be used as the facing. Set upper front aside.

2. STAY-STITCH neck edge of each upper side front (2) section. **GATHER** shoulder edge between notches. To make pleat, on **OUTSIDE**, fold along solid lines. Bring folds to broken line. Baste close to fold. Press. Machine-baste across lower edge of pleat. Remove fold basting now or when top is completed.

SEWING TUTORIALS



Build your skills viewing short, easy-to-follow videos at simplicity.com/sewingtutorials



3. TIE END A, C- Fold tie end (3) in half, lengthwise, with **RIGHT** sides together. Stitch in a 3/8" (1cm) seam, leaving marked end open for turning. Trim corner.

4. Turn tie end; press. On **OUTSIDE**, baste tie end to upper side front, matching small and large dots.

5. TIE END B, D- Narrow hem all edges of tie end (10) except for end with small and large dots. To make pleat, on **OUTSIDE**, fold along solid lines. Bring folds to broken line. Baste close to fold. Press. Machine-baste across outer edge of pleat. Remove fold basting.

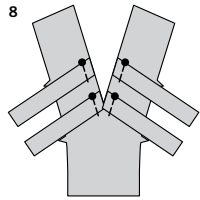
6. On **OUTSIDE**, baste tie end to upper side front, matching small and large dots.

BOWS D

7. Fold upper bow (13) in half, lengthwise, with **RIGHT** sides together. Stitch in a 3/8" (1cm) seam, leaving angled edge with large dots open. Trim corners. Turn Upper bow **RIGHT** side out; press. Baste raw edges together. Make lower bow (14) same as upper bow.

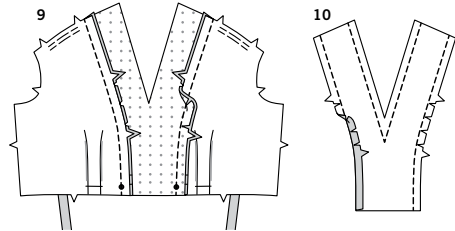
S9748

3 of 4



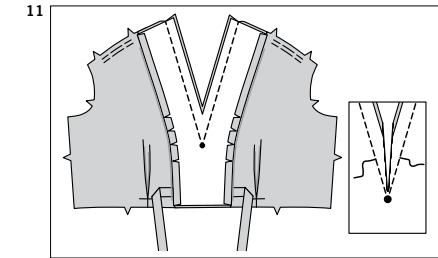
8. With RIGHT sides together and raw edges even, baste bows to neck edge of upper front, having fold edge at large dots and the upper bow above lower bow.

CONTINUE AS FOLLOWS FOR ALL VIEWS

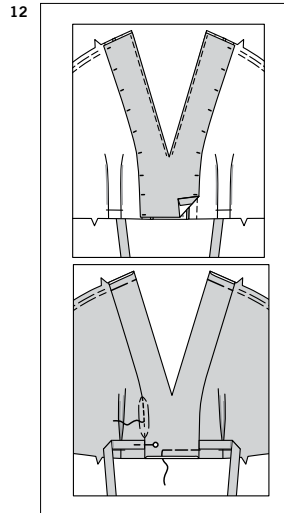


9. Pin upper side front sections to upper front, matching small dots and notches. Stitch. Press seam toward upper front, clipping curves on upper front where necessary.

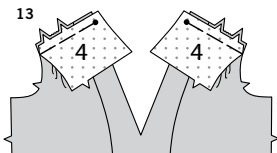
10. **STAY-STITCH** neck edge of upper front facing. Machine-baste 1/2" (1.3cm) from notched edge; do not trim. Press under along stitching, clipping curves to stitching where necessary.



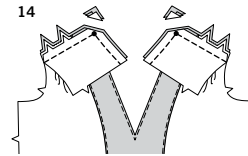
11. Pin facing to upper front along neck edges (over raw edges of ties for View D), matching small dots. Stitch along seam and stitching lines, pivoting with needle in fabric at small dot. To reinforce seam at center front, stitch again over first stitching. Clip to stitching at small dot, being careful not to clip through stitching. Trim seam.



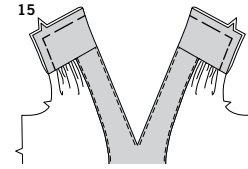
12. **UNDERSTITCH** facing as far as possible. Turn facing to INSIDE; press. Pin pressed edge of facing 1/8" (3mm) over seam, placing pins on OUTSIDE. On OUTSIDE, stitch in the ditch or "groove" of seam, catching pressed edge of facing on INSIDE. Baste raw edges together. **TIP:** To conceal the stitches in the ditch or groove of seam, try using a zipper foot, spreading upper side front and upper front away from seam with your fingers.



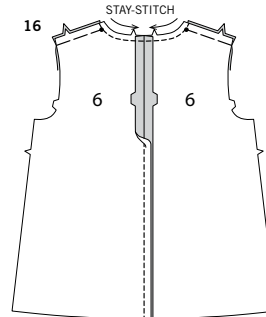
13. Apply **INTERFACING** to LEFT and RIGHT yoke front (4) sections. Pin upper edge of upper front to LEFT and RIGHT yoke fronts, matching notches and small dots. Pull up gathering stitches on upper front to fit; baste.



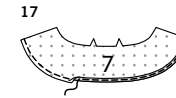
14. With RIGHT sides together and raw edges even, pin yoke facing to yoke (sandwiching upper front). Starting at armhole edge, stitch to small dot; at small dot, pivot and stitch neck edges, keeping upper front free. Trim seam and corners.



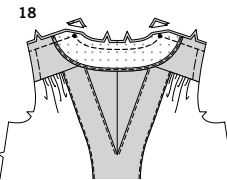
15. Turn yoke and facing RIGHT side out; press. Baste raw edges together.



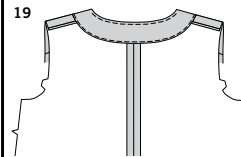
16. **STAY-STITCH** neck edge of back (6) sections. Stitch center back seam. Pin shoulder edges of back and front together, matching small dots; baste.



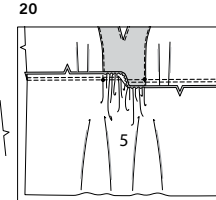
17. Apply **INTERFACING** to back facing (7). To finish unnotched edge, stitch 1/4" (6mm) from edge, turn under along stitching and stitch OR zig-zag over the edge OR overlock/serge over the edge.



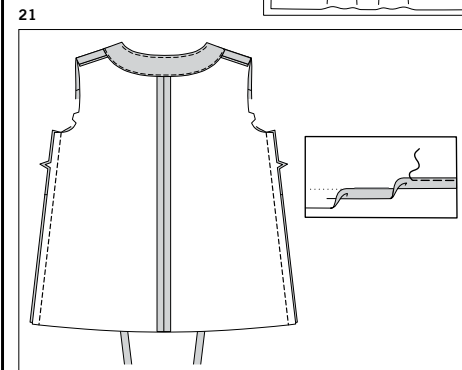
18. With RIGHT sides together and raw edges even, pin back facing to neck edge of back (sandwiching upper front), matching small dots. Stitch neck and shoulder edges, pivoting with needle in fabric at small dot. Trim seam; clip curves.



19. **UNDERSTITCH** back neck facing as far as possible. Turn back facing to INSIDE, turning shoulder seams towards back; press.



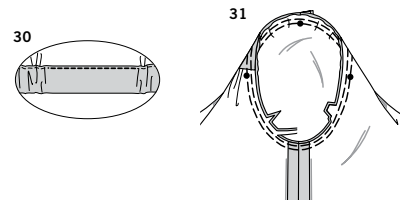
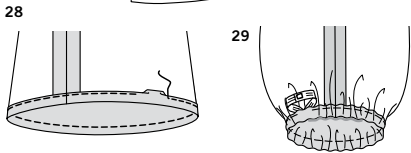
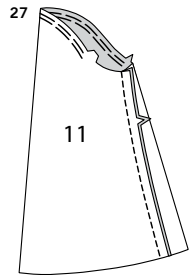
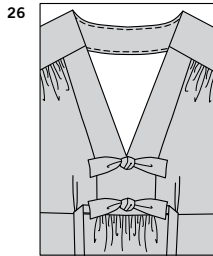
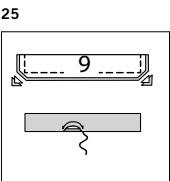
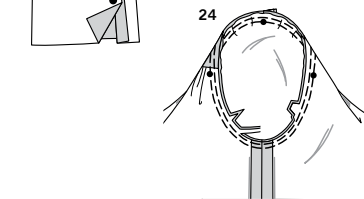
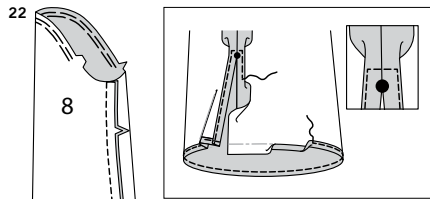
20. Gather upper edge of lower front (5) between small dots. Pin lower front to upper front, matching centers and small dots. Pull up gathering stitches to fit; baste. Stitch. Press seam towards upper front. This section will now be referred to as the front.



21. Stitch back to front at side seams. **NARROW HEM** lower edge of top.

S9748

4 of 4



CONTINUE AS FOLLOWS FOR TOP A

- 22. EASE** upper edge of sleeve (8) between notches.
Stitch underarm seam above large dot, back-stitching at large dot to reinforce seam.
- 23. NARROW HEM** lower edge of sleeve.
Press under 5/8" (1.5cm) on slit opening edges.
Press under 1/4" (6mm) on raw edge; stitch, squaring stitching 1/4" (6mm) above large dot, as shown.
- 24.** Turn sleeve RIGHT side out.
Hold bodice WRONG side out with the armhole toward you.
With RIGHT sides together, pin sleeve to armhole edge, matching underarm seams, notches, and small dots. Pull up ease-stitches to fit.
To distribute fullness evenly, slide fabric along bobbin threads until there are no puckers or tucks on the seam line. Baste. Stitch. Stitch again 1/8" (3mm) from first stitching.
Trim seam below notches close to stitching.
Press only the seam allowance, shrinking out fullness.

- 25.** Fold each bow tie (9) in half, lengthwise, with RIGHT sides together.
Stitch in a 3/8" (1cm) seam, leaving an opening in long edge for turning.
Trim corners.
Turn bow RIGHT side out; press. Slip-stitch opening closed.

- 26.** Make a single knot in center of each bow.
Pin one bow to center front just under point of "V" and remaining bow approximately 5/8" (1.5cm) above seam or as desired.
Hand-sew underside of bow to bodice.

Fasten ties in back as shown on envelope.

CONTINUE AS FOLLOWS FOR TOP B

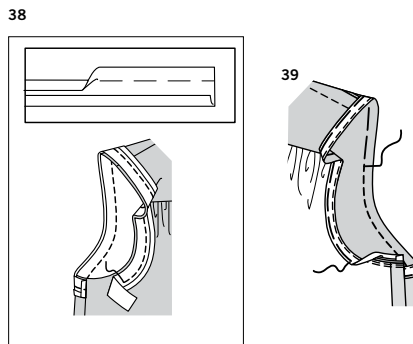
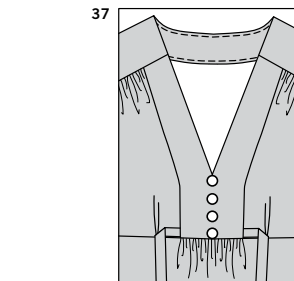
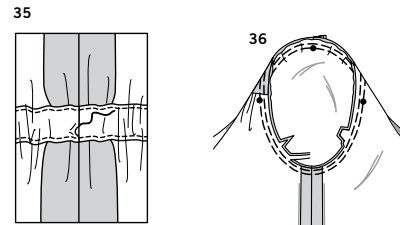
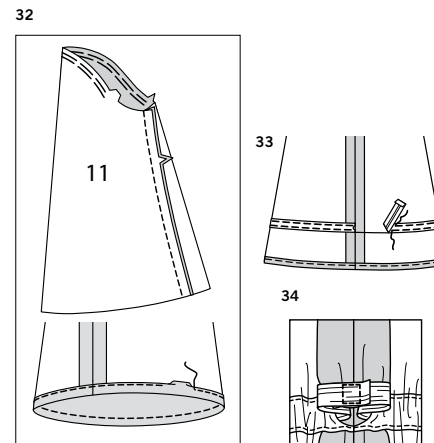
- 27. EASE** upper edge of sleeve (11) between notches.
Stitch underarm seam.

- 28.** Press 1" (2.5cm) on lower edge to INSIDE, forming a casing.
Press under 1/4" (6mm) on inner raw edge.
Stitch close to inner edge of casing, easing in fullness if necessary, leaving an opening to insert elastic.

- 29.** Cut a piece of elastic the length of guide for elastic (12).
Insert elastic through casing.
Overlap ends and stitch securely together.

- 30.** Slitch opening closed.
Distribute fullness evenly.
TIP - To secure elastic so it won't twist in wearing, stitch through all thicknesses of casing in the groove of underarm seam.

- 31.** Turn sleeve RIGHT side out.
Hold bodice WRONG side out with the armhole toward you.
With RIGHT sides together, pin sleeve to armhole edge, matching underarm seams, notches, and small dots. Pull up ease-stitches to fit.
To distribute fullness evenly, slide fabric along bobbin threads until there are no puckers or tucks on the seam line. Baste. Stitch. Stitch again 1/8" (3mm) from first stitching.
Trim seam below notches close to stitching.
Press only the seam allowance, shrinking out fullness.
Fasten ties in back as shown on envelope.



CONTINUE AS FOLLOWS FOR TOP C

- 32. EASE** upper edge of sleeve (11) between notches.
Stitch underarm seam.
NARROW HEM lower edge.
- 33.** To form casing, on INSIDE, pin lower edge of bias tape to sleeve along placement line. Turn under ends of tape so that they meet at underarm seam. Stitch close to long edges of tape.
- 34.** Cut a piece of elastic the length of guide for elastic (12).
Insert elastic through casing.
Overlap ends and stitch securely together.
- 35.** Slip-stitch opening in casing closed.
Distribute fullness evenly.
TIP - To secure elastic so it won't twist in wearing, stitch through all thicknesses of casing in the groove of each seam.
- 36.** Turn sleeve RIGHT side out.
Hold bodice WRONG side out with the armhole toward you.
With RIGHT sides together, pin sleeve to armhole edge, matching underarm seams, notches, and small dots. Pull up ease-stitches to fit.
To distribute fullness evenly, slide fabric along bobbin threads until there are no puckers or tucks on the seam line. Baste. Stitch. Stitch again 1/8" (3mm) from first stitching.
Trim seam below notches close to stitching.
Press only the seam allowance, shrinking out fullness.

- 37.** Sew buttons to bodice at center front, spacing buttons evenly, as shown.

Fasten ties in back as shown on envelope.

CONTINUE AS FOLLOWS FOR TOP D

- 38.** Open out one edge of single fold bias tape.
With RIGHT sides together, pin tape to armhole edge having raw edges even, turning under and lapping one end at side seam.
Stitch in 3/8" (1cm) seam. Trim seam; clip curves.

- 39. UNDERSTITCH** tape.
Turn tape to INSIDE; press.
Baste close to inner edge of tape.
On OUTSIDE, top-stitch as basted. Remove basting.

Fasten bows, and tie in back as shown on envelope.



Congrats!

You've completed your sewing adventure

**SHARE
YOUR** LOOK



Post your pattern and tag us
@simplicity_creative_group and **#simplicitypatterns**
for a chance to be featured on our social media.

Look for more PDF patterns at [simplicity.com](https://www.simplicity.com)

Have a question or need help with your sewing project call us at
1-888-588-2700



Simplicity ©2023 a division of IG Design Group Americas Inc. • Atlanta, GA 30342 USA www.thedesigngroup.com • All Rights Reserved. www.simplicity.com • Made in the U.S.A. Fabriqué aux États-Unis.

To be used for individual private home use only and not for commercial or manufacturing purposes. • A usage privé seulement et non à des fins commerciales ou de production en série. • Para uso privado solamente, no se puede utilizar con propósitos de comercialización o de producción en serie.