

S9744

Simplicity



A



B



C



B

Average

MISSES' DRESSES

Suggested Fabrics: Chambray, Cotton Lawn, Cotton Blends, Dotted Swiss, Eyelet, Gingham, Linen Blends, Poplin, Seersucker. **Lining:** Polyester, Cotton Blends. **Interfacing:** Lightweight Fusible.

Notions: A,C: Five ¾" (2cm) buttons. **Also for B:** Seven ¾" (2cm) buttons.

Sizes	8	10	12	14	16	18	20	22	24	26
European	34	36	38	40	42	44	46	48	50	52

BODY MEASUREMENTS: Select pattern size based on body measurements

Bust	31½	32½	34	36	38	40	42	44	46	48	Ins.
Waist	24	25	26½	28	30	32	34	37	39	41½	"
Hip-9" below waist	33½	34½	36	38	40	42	44	46	48	50	"
Back-neck to waist	15¾	16	16¼	16½	16¾	17	17¼	17½	17¾	17¾	"

Lining A,B,C 45** ½ yd.

Dress A	45**	4¼	4¼	4¼	4¼	4¼	4¼	4½	5	5¾	Yds.
	60**	3¾	3¾	3¾	3¾	3¾	3¾	4	4	4¾	"

Interfacing 20" 1 yd.

Dress B	45**	3¾	3¾	3¾	3¾	3¾	3¾	4	4¼	4¼	Yds.
	60**	2½	2½	2½	2½	2½	2½	3	3	3¾	"

Interfacing 20" 1¾ yds.

Dress C	45**	2¾	2¾	2¾	3	3	3	3	3	3¾	Yds.
	60**	2	2¼	2¼	2½	2½	2½	2½	2½	2¾	"

Interfacing 20" ¾ yd.

FINISHED GARMENT MEASUREMENTS (Includes Design and Wearing Ease)

A,B,C Bust	37	38	39½	41½	43½	45½	47½	49½	51½	53½	Ins.
A,B,C Waist	39	40	41½	43½	45½	47½	49½	51½	53½	55½	"
A,B,C Hip	45	46	47½	49½	51½	53½	55½	57½	59½	61½	"

Width, lower edge

Dress A	65½	66½	68	70	72	74	76	78	80	82	Ins.
Dress B,C	54½	55½	57	59	61	63	65	67	69	71	"

Finished back length from base of neck

Dress A	49½	50	50½	50½	50½	51	51½	51½	51½	52	Ins.
Dress B,C	35¾	36	36¼	36¼	36¼	37	37¼	37¼	37¼	38	"

*with nap **without nap

Moins Facile

ROBES POUR JEUNES FEMMES

Tissus Conseillés: Chambray, Linon de coton, Cotonnades, Plumetis, Tissu à bordure de broderie anglaise, Vichy, Lin mélangés, Popeline, Seersucker. **Doubleur:** Polyester, Cotonnades. **Entoilage:** Thermocollant léger.

Mercurie: A,C: 5 boutons de 2cm. **Aussi pour B:** 7 boutons de 2cm.

Tailles	8	10	12	14	16	18	20	22	24	26
Françaises	36	38	40	42	44	46	48	50	52	54
Européen	34	36	38	40	42	44	46	48	50	52

MESURES DU CORPS: Choisissez la taille du patron basée sur les mesures du corps

Poitrine	80	83	87	92	97	102	107	112	117	122	cm
Taille	61	64	67	71	76	81	87	94	99	106	"
Hanches (23cm au-dessous de la taille)	85	88	92	97	102	107	112	117	122	127	cm

Dos du cou à la taille 40 40.5 41.5 42 42.5 43 44 44 44.5 44.5 "

Doubleur A,B,C 115cm* 0.5m

Robe A	115cm*	3.8	3.9	3.9	3.9	3.9	3.9	3.9	4.2	4.6	4.8	m
	150cm*	3.0	3.0	3.1	3.1	3.4	3.6	3.6	3.7	3.7	3.8	"

Entoilage 51cm 1.0m

Robe B	115cm*	2.9	2.9	2.9	3.6	3.6	3.6	3.6	3.7	3.8	3.9	m
	150cm*	2.3	2.3	2.3	2.4	2.6	2.6	2.7	2.9	2.9	3.0	"

Entoilage 51cm 1.3m

Robe C 115cm* 2.6 2.7 2.7 3.0 3.1 3.1 3.1 3.1 3.4 3.4 3.4 m

150cm* 1.9 2.1 2.1 2.2 2.2 2.3 2.4 2.6 2.7 2.7 "

Entoilage 51cm 0.8m

MESURES DES VÊTEMENTS FINI (Motif et aisance de port compris)

A,B,C Poitrine 94 97 100 105 110 116 121 126 131 136 cm

A,B,C Taille 99 102 105 110 116 121 126 131 136 141 "

A,B,C Hanches 114 117 121 126 131 136 141 146 151 156 "

Largeur à l'ourlet

Robe A 166 169 173 178 183 188 193 198 203 208 cm

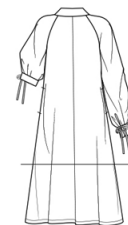
Robe B,C 138 141 145 150 155 160 165 170 175 180 "

Longueur finie - dos, votre nuque à l'ourlet

Robe A 126 127 128 128 129 130 130 131 131 132 cm

Robe B,C 91 91 92 93 93 94 95 95 96 97 "

*avec sens **sans sens



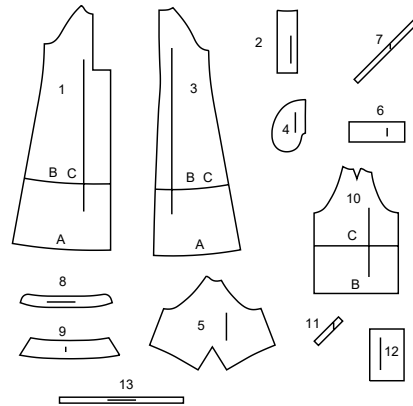
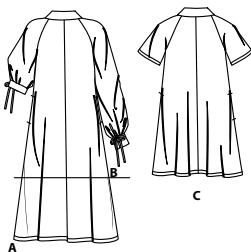
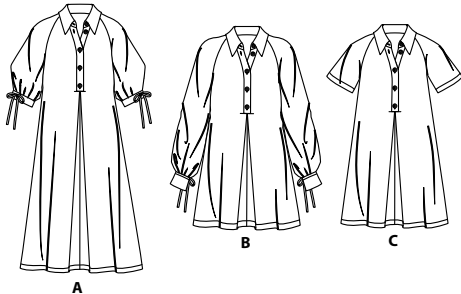
A



C

Simplicity

Thank you for purchasing this Simplicity pattern. We made every effort to provide you with a high quality product.



- 1 FRONT - A,B,C
- 2 PLACKET - A,B,C
- 3 BACK -A,B,C
- 4 POCKET - A,B,C
- 5 SLEEVE - A
- 6 SLEEVE BAND - A
- 7 TIE - A
- 8 COLLAR BAND - A,B,C
- 9 COLLAR - A,B,C
- 10 SLEEVE - B,C
- 11 CONTINUOUS LAP - B
- 12 CUFF - B
- 13 TIE - B

The Pattern General Directions Cutting/Marking

SYMBOLS

- ↔ GRAIN LINE Place on straight grain of fabric parallel to selvage
- ▬ PLACE SOLID LINE on fold of fabric.
- - - - CENTER FRONT OR BACK of garment.
- ▽▽▽ NOTCHES
- ° ○ DOTS
- ▬ CUTTING LINE
- ▬▬ LENGTHEN OR SHORTEN LINES

ADJUST IF NEEDED

Make adjustments before placing pattern on fabric.

TO LENGTHEN: Cut pattern between lengthen or shorten lines. Spread pattern evenly, the amount needed and tape to paper.

TO SHORTEN: At lengthen or shorten lines, make an even pleat taking up amount needed. Tape in place.

SEAM ALLOWANCE: 5/8" (1.5cm) unless otherwise stated is included but not printed on MULTI-SIZE PATTERNS. Mark your size with colored felt tip pen. See chart on tissue for how to use MULTI-SIZE PATTERNS.

When lengthen or shorten lines are not given, make adjustments at lower edge of pattern.

BEFORE CUTTING:

PRESS pattern pieces with a warm dry iron. PRE-SHRINK fabric by pre-washing washables or steam-pressing non-washables.

CIRCLE your cutting layout.

PIN pattern to fabric as shown in Cutting Layouts.

- FOR DOUBLE THICKNESS: Fold fabric with RIGHT sides together.
- FOR SINGLE THICKNESS: Place fabric RIGHT side up.
- FOR PILE, SHADED OR ONE WAY DESIGN FABRICS: Use "with nap" layouts

AFTER CUTTING:

Transfer markings to WRONG side of fabric before removing pattern. Use pin and chalk method or dressmaker's tracing paper and wheel.

To Quick Mark:

- Snip edge of fabric to mark notches, ends of fold lines and center lines.
- Pin mark dots.

Sewing

SEW garment following Sewing Directions.

- PIN or machine-baste seams matching notches.
- STITCH 5/8" (1.5 cm) seams unless otherwise stated.
- PRESS seams open unless otherwise indicated clipping when necessary so seams will lie flat.
- TRIM seams to reduce bulk, as shown below.

Trim enclosed seams into layers

Trim corners

Clip inner curves

Notch outer curves

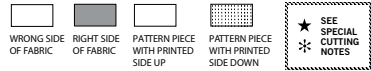
SPECIAL CUTTING NOTES

- ★ If layout shows a piece extending past fold, cut out all pieces except piece that extends.
- ✱ Mark small arrows along both selvages indicating direction of nap or design. Fold fabric crosswise with RIGHT sides together, and cut along fold (a).

Open out fabric to single thickness. Cut extending piece on RIGHT side of fabric in position shown.

Turn one fabric layer around so arrows on both layers go in the same direction. Place RIGHT sides together (b).

Cutting Layouts

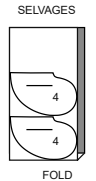


POSITION OF PATTERN PIECES MAY VARY SLIGHTLY ACCORDING TO YOUR PATTERN SIZE

LINING A,B,C

USE PIECE 4

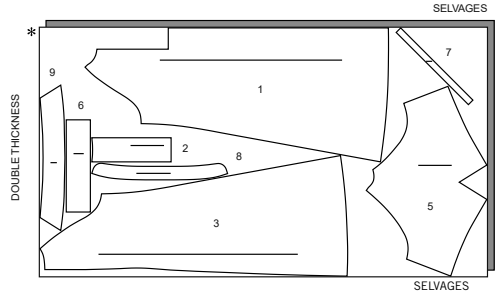
45" (115CM) WITHOUT NAP ALL SIZES



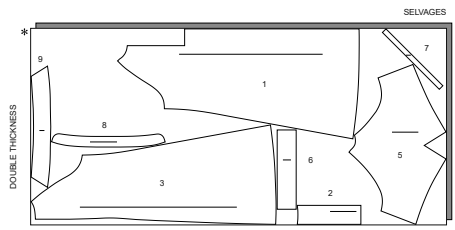
DRESS A

USE PIECES 1 2 3 5 6 7 8 9

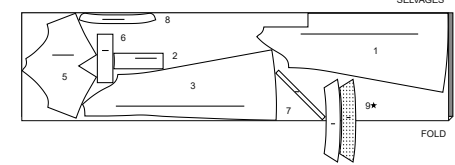
45" (115CM) WITH NAP SIZES 8 10 12 14 16 18 20 22



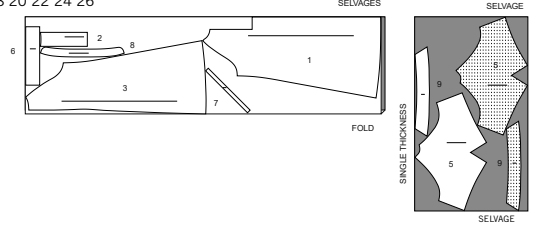
45" (115CM) WITH NAP SIZES 24 26



60" (150CM) WITH NAP SIZES 8 10 12 14



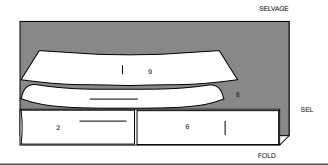
60" (150CM) WITH NAP SIZES 16 18 20 22 24 26



INTERFACING A

USE PIECES 2 6 8 9

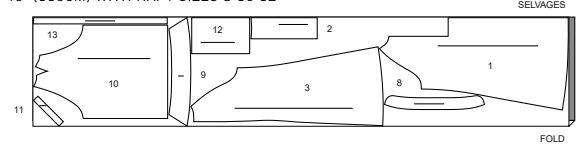
20" (51CM) ALL SIZES



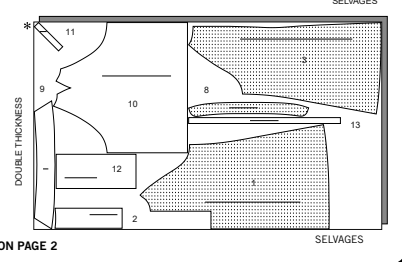
DRESS B

USE PIECES 1 2 3 8 9 10 11 12 13

45" (115CM) WITH NAP / SIZES 8 10 12



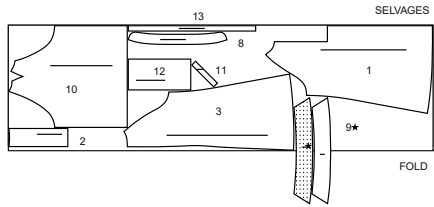
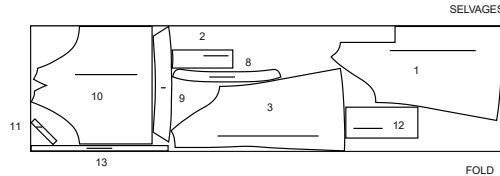
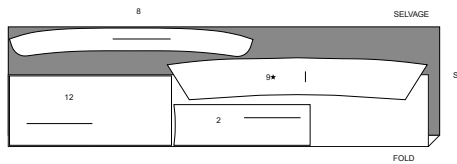
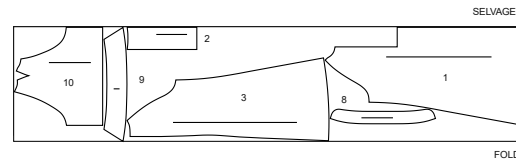
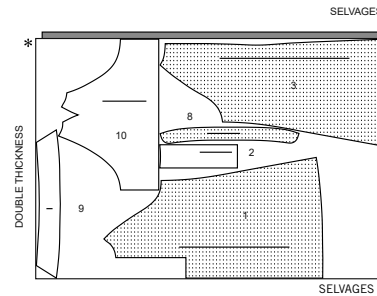
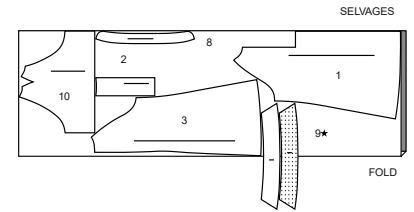
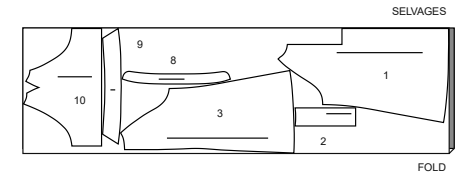
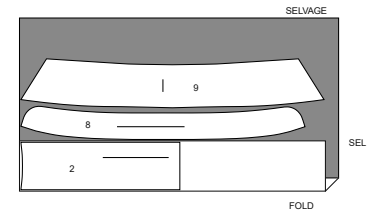
45" (115CM) WITH NAP SIZES 14 16 18 20 22 24 26



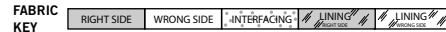
CUTTING LAYOUTS CONTINUED ON PAGE 2

S9744

2 of 4

60" (150CM)
WITH NAP
SIZES 8 10 12 14 16 18 2060" (150CM)
WITH NAP
SIZES 22 24 26**INTERFACING B**
USE PIECES 2 8 9 1220" (51CM)
ALL SIZES**DRESS C**
USE PIECES 1 2 3 8 9 1045" (115CM)
WITH NAP
SIZES 8 10 1245" (115CM)
WITH NAP
SIZES 14 16 18 20
22 24 2660" (150CM)
WITH NAP
SIZES 8 10 12 14 16 18
2060" (150CM)
WITH NAP
SIZES 22 24 26**INTERFACING C**
USE PIECES 2 8 920" (51CM)
ALL SIZES

Sewing Directions

Read **General Directions** on page 1 before you begin.

GLOSSARY OF SEWING METHODS

Sewing methods shown in *ITALICS* are defined below:***DART SEAM.*** To stitch dart seam, with **RIGHT** sides together, bring broken lines together carefully matching small dots. On **INSIDE**, place pins at **RIGHT** angles to the broken lines. Stitch the dart seam from outer edge to the point.***TIP-*** To prevent a "bubble" at the point, make the last few stitches right on the fold and leave the thread ends long enough to tie a knot. **DO NOT** back-stitch at the point.

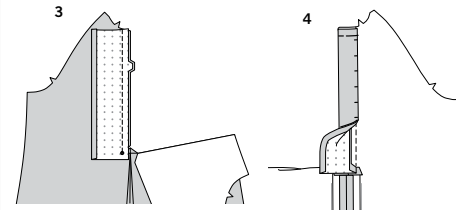
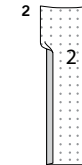
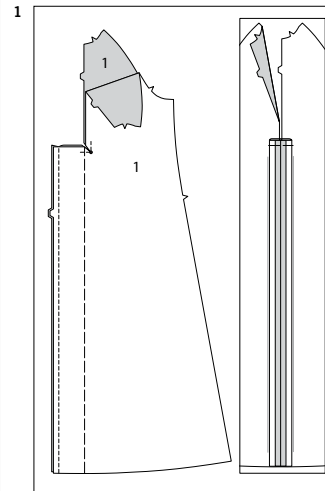
Press the dart seam flat along the stitching to "blend" the stitches, then press dart as indicated in the Sewing Directions.

EASE/GATHER. Loosen needle tension slightly. With **RIGHT** side up, stitch 5/8" (1.5cm) from cut edge using a long stitch. Stitch again 1/4" (6mm) from the first stitching within the seam allowance.***INTERFACING.*** Pin interfacing to **WRONG** side of fabric. Fuse interfacing in place following manufacturer's directions.***STAY-STITCH.*** Stitch 1/2" (1.3cm) from cut edge in direction of arrows. This stitching stays in permanently to prevent stretching on curved edges. (Shown only in the first illustration.)***UNDERSTITCH.*** Press facing and seam away from garment, stitching through facing and seam allowances close to seam.

SEWING TUTORIALS



SCAN ME

Build your skills viewing short, easy-to-follow videos at
simplicity.com/sewingtutorials

DRESS A, B, C

NOTE: View A will be illustrated, unless otherwise indicated.

FRONT AND BACK

1. To reinforce front (1), stitch along stitching line, as shown. Clip diagonally to small dot, being careful not to clip through stitching. With **RIGHT** sides together, stitch front sections together at center front seam, matching notches.
To make pleats in front, on **OUTSIDE**, fold along center front lines. Bring folds to center seam line; pin. Baste upper edges and along pleat folds. Press. Remove pleat fold basting.

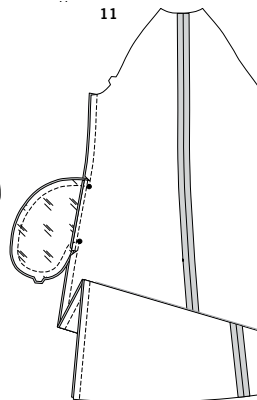
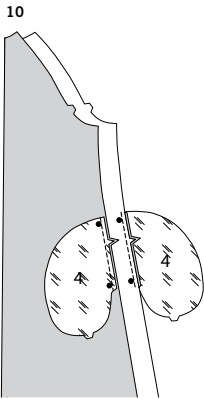
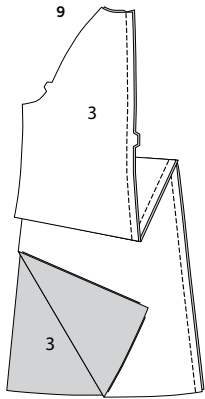
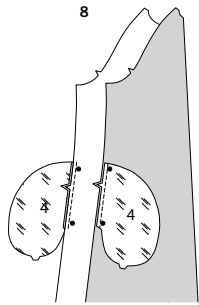
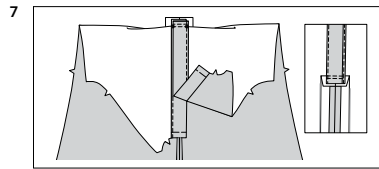
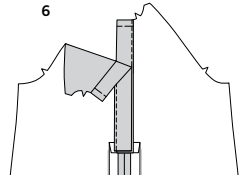
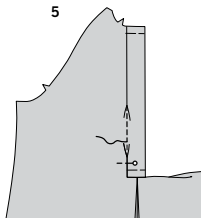
2. Press under 5/8" (1.5cm) on unnotched edge of placket (2). Trim to 1/4" (6mm).

3. With **RIGHT** sides together, pin placket to **RIGHT** front opening edge, matching small dots. Stitch seam ending at small dot. Back-stitch at small dot to reinforce seam.

4. Press seam toward placket.
With **WRONG** sides together, fold placket in half along fold line. Press. Pin pressed edge of placket over seam. Baste upper and lower raw edges together.

S9744

3 of 4



5. On **OUTSIDE**, stitch in the ditch or "groove" of seam, catching in pressed edge of placket on **INSIDE**.

6. Apply remaining placket to **LEFT** front edge in same manner. On **INSIDE**, lap **LEFT** placket over **RIGHT**, matching small dots.

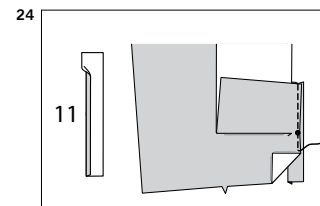
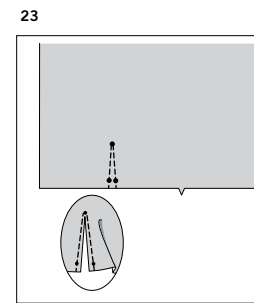
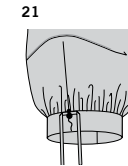
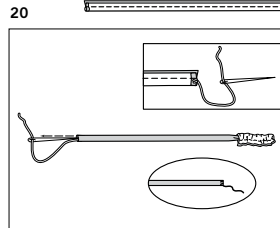
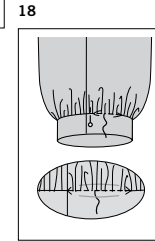
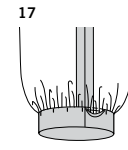
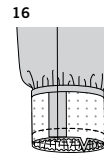
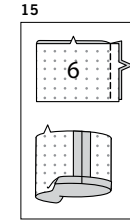
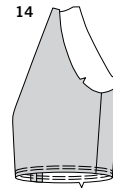
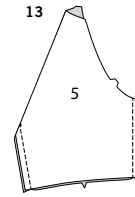
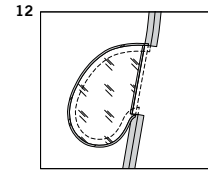
7. Pin lower edge of placket and clipped edge of front and pleat together. Stitch between small dots; back-stitch to reinforce seam.

8. With **RIGHT** sides together, pin one pocket (4) section to front at each side, matching large dots, having raw edges even. Stitch in 3/8" (1cm) seam. Press seams toward pockets, pressing pockets out.

9. With **RIGHT** sides together, stitch back (3) sections together at center back seam, matching notches.

10. With **RIGHT** sides together, pin one pocket section to back at each side, matching large dots, having raw edges even. Stitch in 3/8" (1cm) seam. Press seams toward pockets, pressing pockets out.

11. With **RIGHT** sides together, pin front to back at side seams, matching large dots. Stitch side seams, leaving an opening between large dots. Stitch pocket edges together from side seam to upper edge.



12. Clip back seam allowance above and below pocket. Press seam open above and below clips. Press pocket toward front.

SLEEVE

FOR VIEW A-

13. Stitch **DART SEAM** in sleeve (5). Stitch sleeve seam.

14. **GATHER** lower edge of sleeve.

15. Apply **INTERFACING** to sleeve band (6). Stitch ends of sleeve band together. Press under seam allowance on unnotched edge of band. Trim pressed seam allowance to 3/8" (1 cm).

16. With **RIGHT** sides together, pin band to lower edge of sleeve, matching seams and notches. Pull up gathering stitches and adjust gathers evenly. Baste. Stitch, keeping pressed edge free. Trim seam. Press seam toward band.

17. With **WRONG** sides together, fold band along foldline. Press. Pin pressed edge of band over seam.

18. On **OUTSIDE**, stitch in the ditch or "groove" of seam, catching in pressed edge of band on **INSIDE**.

19. Press under 1/4" (6mm) on ends of tie (7). With **RIGHT** sides together, fold tie in half lengthwise, having raw edges even. Stitch in 1/4" (6mm) seam, leaving ends open.

20. With a needle, attach a strong thread to one end of tie. Draw needle eye forward, through fold, turning tie **RIGHT** side out. Press. **SLIPSTITCH** pressed edges.

21. On **OUTSIDE**, pin tie to sleeve band, centering between small and large dots, as shown. Stitch along center of tie, through all thicknesses.

FOR VIEW B

22. Stitch **DART SEAM** in sleeve (10).

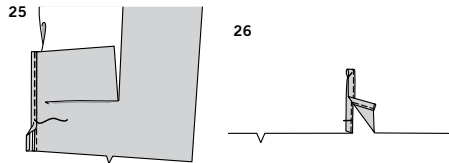
23. To make slash opening at lower edge of sleeve, stitch along stitching lines. Pivot and take one small stitch across the point. Slash between stitching, being careful not to slash through the stitch at the point.

TIP - To prevent fabric from fraying, treat the point with a liquid seam sealant, such as Fray Check™. TEST on a scrap of fabric first.

24. Press under 1/4" (6mm) on unmarked edge of continuous lap (11). Spread slashed edges of sleeve apart so that they form a straight line. Pin **RIGHT** side of continuous lap to **WRONG** side of slashed edges, matching stitching lines and small dots. Sleeve seam allowance will be 1/4" (6mm) at the ends, but taper close to nothing at the center dot. Stitch along stitching line, being careful not to pucker sleeve at center dot. Press seam toward lap.

S9744

4 of 4



25. Pin pressed edge of lap to OUTSIDE slightly over stitching. Stitch close to pressed edge.

26. Turn front edge of lap to INSIDE; baste in place across lower edge. To keep lap in place, stitch diagonally across upper edge of lap as shown.

27. Stitch sleeve seam.

28. GATHER lower edge of sleeve between lap edges, as shown.

29. Apply **INTERFACING** to cuff (12). Press under seam allowance on unnotched edge of cuff. Trim pressed seam allowance to 3/8" (1 cm).

30. With RIGHT sides together, pin cuff to lower edge of sleeve, matching seams and notches, placing small dots at opening edges. Pull up gathering stitches and adjust gathers evenly. Baste. Stitch, keeping pressed edge free. Trim seam. Press seam toward cuff.

31. With RIGHT sides together, fold cuff along foldline. Stitch ends. Trim seams.

32. Turn RIGHT side out. Press. Pin pressed edge of cuff over seam.

33. On OUTSIDE, stitch in the ditch or "groove" of seam, catching in pressed edge of cuff on INSIDE.

34. Press under 1/4" (6mm) on ends of tie (13). With RIGHT sides together, fold tie in half lengthwise, having raw edges even. Stitch in 1/4" (6mm) seam, leaving ends open.

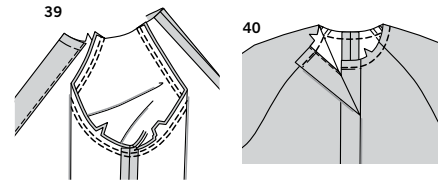
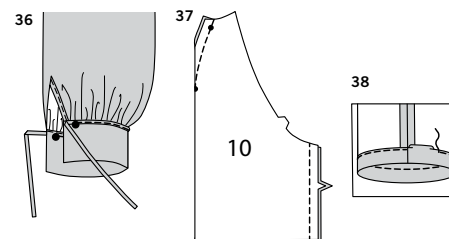
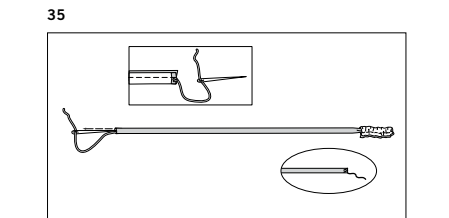
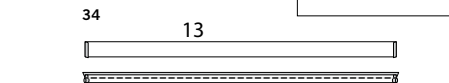
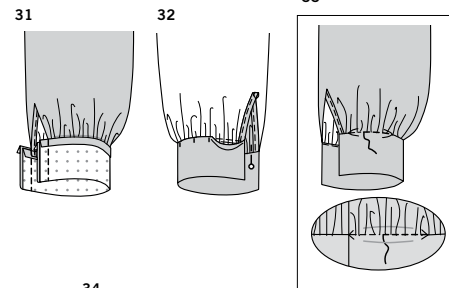
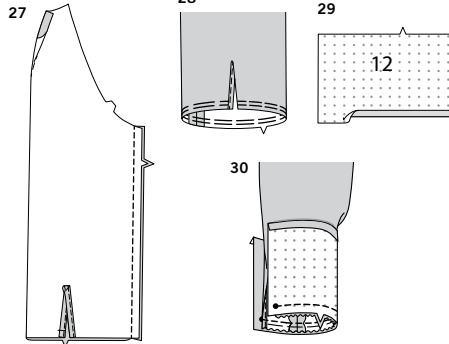
35. With a needle, attach a strong thread to one end of tie. Draw needle eye forward, through fold, turning tie RIGHT side out. Press. **SLIPSTITCH** pressed edges.

36. On OUTSIDE, pin tie to cuff, matching large dots, placing lower edge along placement line, as shown. Stitch close to lower edge of tie, between large dots, through all thicknesses.

FOR VIEW C

37. Stitch **DART SEAM** in sleeve. Stitch sleeve seam.

38. Turn up 1 1/4" (3.2cm) hem on lower edge of sleeve. Turn 1/4" (6mm) on raw edge of hem to wrong side; press. Stitch close to inner edge of hem.



CONTINUE AS FOLLOWS FOR ALL VIEWS

39. With RIGHT sides together, pin sleeve to armhole edge, matching notches and seam. Stitch. Stitch again 1/4" (6mm) away in seam allowance. Trim close to second stitching. Press seam toward sleeve.

COLLAR

40. **STAYSTITCH** neck edge.

41. Apply **INTERFACING** to collar (9). With RIGHT sides together pin collar sections together matching notches and small dots. Stitch outer edges of collar leaving edge with notches open. Trim seam. For facing, **UNDERSTITCH** interfaced collar section. Turn collar RIGHT side out. Press. Baste raw edges together.

42. Apply **INTERFACING** to collar band (8). On OUTSIDE, pin collar, facing side down to interfaced collar band section, matching notches and small dots. Baste.

43. For facing, press under seam allowance on lower edge of uninterfaced collar band section, as shown. Trim pressed seam allowance to 3/8" (1 cm).

44. With RIGHT sides together, pin collar band facing to collar band, over collar, matching dots and notches. Stitch. Trim seam. Turn facing to INSIDE. Press.

45. On OUTSIDE, pin collar to neck edge, matching centers and large dots, placing small dots at shoulder seams, clipping neck edge where necessary. Stitch. Trim seam. Press seam toward collar.

46. **SLIPSTITCH** pressed edge over seam.

47. On OUTSIDE, stitch close to edges of collar band, as shown.

FINISHING

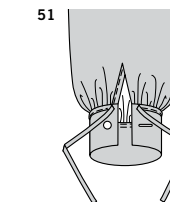
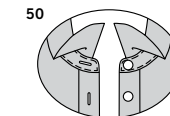
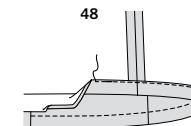
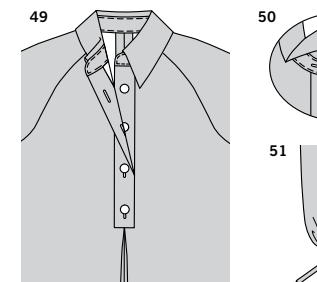
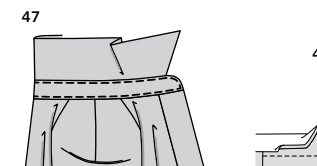
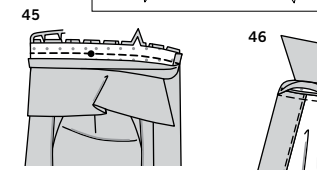
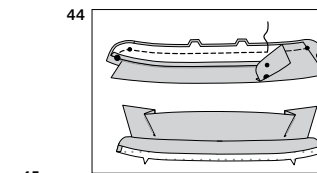
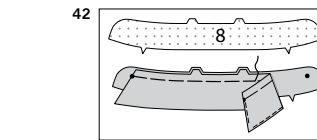
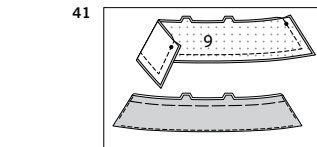
48. Turn up 1 1/4" (3.2cm) hem on lower edge of dress. Turn 1/4" (6mm) on raw edge of hem to wrong side; press. Stitch close to inner edge of hem.

49. Make buttonholes in right front at markings. Lap opening edges, matching centers. Make button markings in left front. Sew buttons at markings.

50. Make buttonhole in collar band at marking. Sew button to collar band at small dot.

FOR VIEW B

51. Make buttonhole in cuff at marking. Sew button to cuff at small dot.





Congrats!

You've completed your sewing adventure

**SHARE
YOUR** LOOK



Post your pattern and tag us
@simplicity_creative_group and **#simplicitypatterns**
for a chance to be featured on our social media.

Look for more PDF patterns at [simplicity.com](https://www.simplicity.com)

Have a question or need help with your sewing project call us at
1-888-588-2700



Simplicity ©2023 a division of IG Design Group Americas Inc. • Atlanta, GA 30342 USA www.thedesigngroup.com • All Rights Reserved. www.simplicity.com • Made in the U.S.A. Fabriqué aux États-Unis.

To be used for individual private home use only and not for commercial or manufacturing purposes. • A usage privé seulement et non à des fins commerciales ou de production en série. • Para uso privado solamente, no se puede utilizar con propósitos de comercialización o de producción en serie.