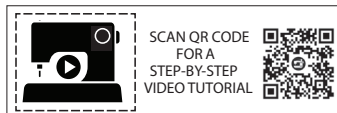


Simplicity®

mi g • A DIY & LIFESTYLE BRAND

S9741



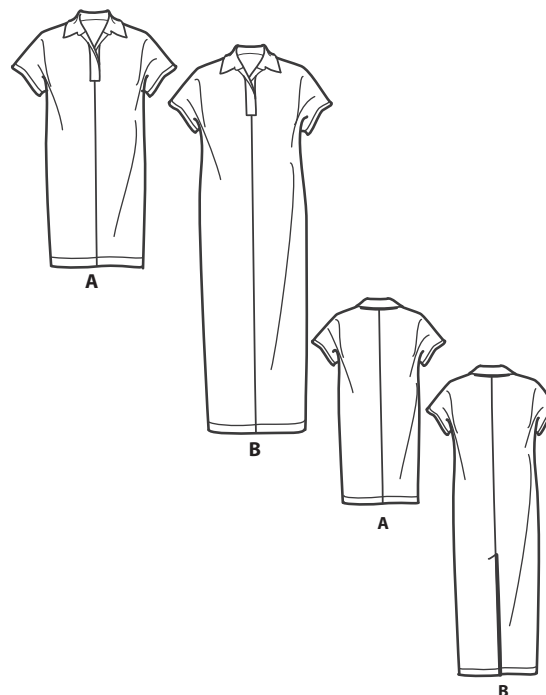
>> WOMEN'S KNIT DRESS
IN TWO LENGTHS
SKILL LEVEL: AVERAGE



PDF PATTERNS

SUGGESTED FABRICS:

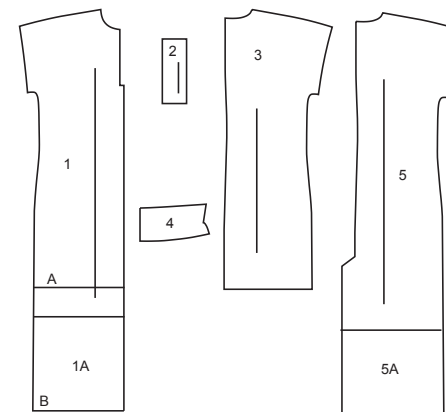
> Stretch Knits only such as Double Knit, Interlock, Jersey, Lightweight Ponte. See Pick-A-Knit® Rule. **Interfacing:** Lightweight Fusible.



Your printed tile pieces should be assembled before you move on to this step!

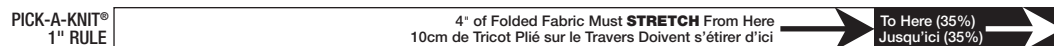
PIECES (5)

- 1 FRONT - A,B
- 1A EXTENSION B
- 2 PLACKET - A,B
- 3 BACK A
- 4 COLLAR - A,B
- 5 BACK - B
- 5A EXTENSION B



STRETCH GAUGE - MEASURING FABRIC STRETCH

Whenever you see a minimum stretch requirement on one of the sewing patterns, it is important that you measure the fabric stretch in both length and width!



YARDAGE CHART

[illegible]

FINISHED GARMENT MEASUREMENTS

SIZES	20W	22W	24W	26W	28W	30W	32W	34W	36W	38W	
A,B BUST	45	47	49	51	53	55	57	59	61	63	ins.
	114	119	124	130	135	140	145	150	155	160	cm.
A,B WAIST	44	46	48	50	52	54	56	58	60	62	ins.
	112	117	122	127	132	137	142	147	152	157	cm.
A,B HIP	47	49	51	53	55	57	59	61	63	65	ins.
	119	124	130	135	140	145	150	155	160	165	cm.
WIDTH, LOWER EDGE											
DRESS A	48	50	52	54	56	58	60	62	64	66	ins.
	122	127	132	137	142	147	152	157	163	168	cm.
DRESS B	48½	50½	52½	54½	56½	58½	60½	62½	64½	66½	ins.
	123	128	133	138	144	149	154	159	164	169	cm.
FINISHED BACK LENGTH FROM BASE OF NECK											
DRESS A	39¾	40	40¼	40½	40¾	41	41¼	41½	41¾	42	ins.
	101	102	102	103	104	104	105	105	106	107	cm.
DRESS B	58¾	59	59¼	59½	59¾	60	60¼	60½	60¾	61	ins.
	149	150	150	151	152	152	153	154	154	155	cm.

BODY MEASUREMENTS

SIZES	20W	22W	24W	26W	28W	30W	32W	34W	36W	38W	
BUST	42	44	46	48	50	52	54	56	58	60	ins.
	107	112	117	122	127	132	137	142	147	152	cm.
WAIST	35	37	39	41½	44	46½	49	51½	53	54½	ins.
	89	94	99	105	112	118	124	131	134	138	cm.
HIP-9" (23CM) BELOW WAIST	44	46	48	50	52	54	56	58	60	62	ins.
	112	117	122	127	132	137	142	147	152	157	cm.
BACK-NECK TO WAIST	17¼	17⅝	17½	17⅝	17¾	17⅞	18	18⅞	18½	18⅝	ins.
	44	44	44.5	45	45	45.5	46	46	46	47	cm.

General Directions

The Pattern

SYMBOLS



GRAIN LINE Place on straight grain of fabric parallel to selvage



PLACE SOLID LINE on fold of fabric.



CENTER FRONT OR BACK of garment.



NOTCHES



DOTS



CUTTING LINE



LENGTHEN OR SHORTEN LINES

SEAM ALLOWANCE: 5/8" (1.5cm) unless otherwise stated is included but not printed on MULTI-SIZE PATTERNS.

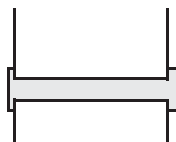
Mark your size with colored felt tip pen.

See chart on tissue for how to use MULTI-SIZE PATTERNS.

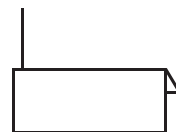
ADJUST IF NEEDED

Make adjustments before placing pattern on fabric.

TO LENGTHEN:
Cut pattern between lengthen or shorten lines. Spread pattern evenly, the amount needed and tape to paper.



TO SHORTEN:
At lengthen or shorten lines, make an even pleat taking up amount needed. Tape in place.



When lengthen or shorten lines are not given, make adjustments at lower edge of pattern.

Cutting/Marking

BEFORE CUTTING:

PRESS pattern pieces with a warm dry iron. PRE-SHRINK fabric by pre-washing washables or steam-pressing non-washables.

CIRCLE your cutting layout.

PIN pattern to fabric as shown in Cutting Layouts.

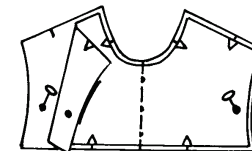
- FOR DOUBLE THICKNESS: Fold fabric with RIGHT sides together.
- FOR SINGLE THICKNESS: Place fabric RIGHT side up.
- FOR PILE, SHADED OR ONE WAY DESIGN FABRICS: Use "with nap" layouts

AFTER CUTTING:

Transfer markings to WRONG side of fabric before removing pattern. Use pin and chalk method or dressmaker's tracing paper and wheel.

To Quick Mark:

- Snip edge of fabric to mark notches, ends of fold lines and center lines.
- Pin mark dots.

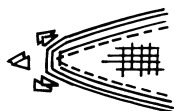


Sewing

- SEW garment following **Sewing Directions**.
- PIN or machine-baste seams matching notches.
- STITCH 5/8" (1.5 cm) seams unless otherwise stated.
- PRESS seams open unless otherwise indicated clipping when necessary so seams will lie flat.
- TRIM seams to reduce bulk, as shown below.



Trim enclosed seams into layers



Trim corners



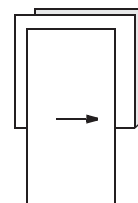
Clip inner curves



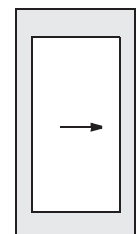
Notch outer curves

SPECIAL CUTTING NOTES

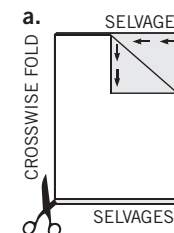
★ If layout shows a piece extending past fold, cut out all pieces except piece that extends.



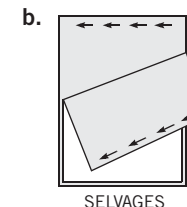
Open out fabric to single thickness. Cut extending piece on RIGHT side of fabric in position shown.



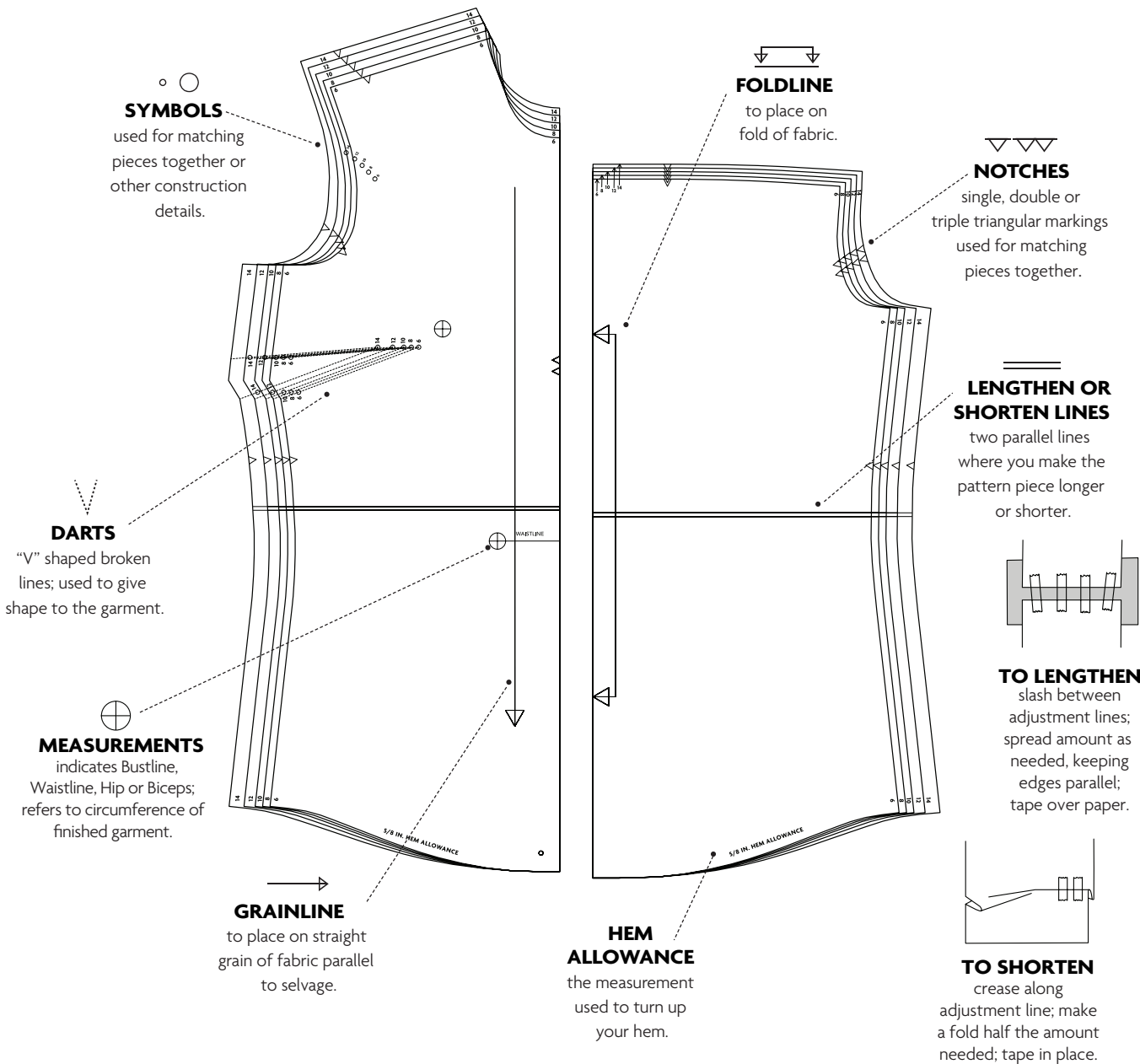
✱ Mark small arrows along both selvages indicating direction of nap or design. Fold fabric crosswise with RIGHT sides together, and cut along fold (a).



Turn one fabric layer around so arrows on both layers go in the same direction. Place RIGHT sides together (b).



PATTERN MARKINGS



Cutting Layouts



WRONG SIDE
OF FABRIC



RIGHT SIDE
OF FABRIC



PATTERN PIECE
WITH PRINTED
SIDE UP



PATTERN PIECE
WITH PRINTED
SIDE DOWN



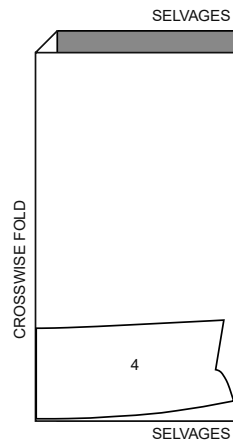
POSITION OF PATTERN PIECES MAY VARY
SLIGHTLY ACCORDING TO YOUR PATTERN SIZE

ALL VIEWS ARE SIZED FOR STRETCH KNITS ONLY

INTERFACING A,B

USE PIECE 4

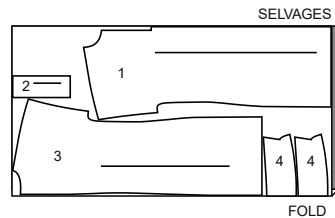
20" (51CM)
ALL SIZES



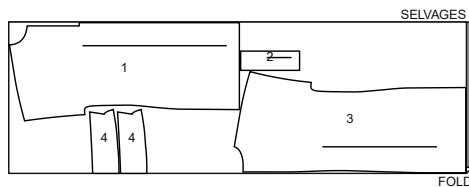
DRESS A

USE PIECES 1 2 3 4

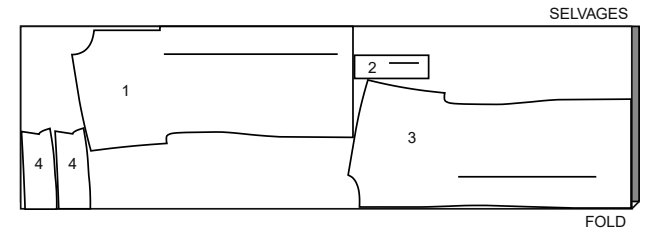
60" (150CM)
WITH NAP
SIZES 20W 22W



60" (150CM)
WITH NAP
SIZES 24W 26W 28W
30W 32W 34W



60" (150CM)
WITH NAP
SIZES 36W 38W

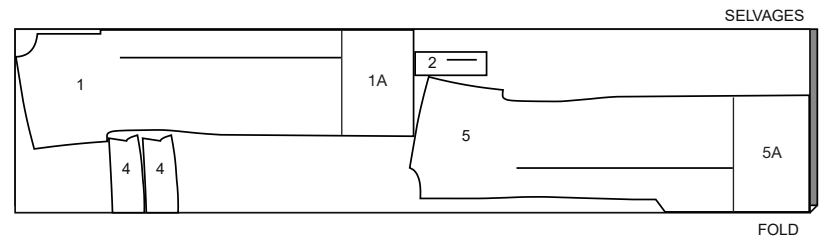


NOTE: BEFORE CUTTING FABRIC JOIN PIECE IN PARENTHESIS TO
CORRESPONDING PIECE FOLLOWING INSTRUCTIONS ON TISSUE PATTERN.

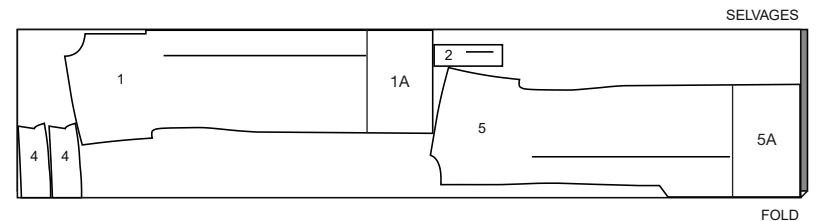
DRESS B

USE PIECES 1(1A) 2 4 5(5A)

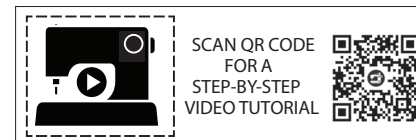
60" (150CM)
WITH NAP
SIZES 20W 22W 24W 26W 28W 30W 32W 34W



60" (150CM)
WITH NAP
SIZES 36W 38W



Congratulations on purchasing a Mimi G for Simplicity Sew Along Pattern.
Please scan the QR code below to link to the Sew Along video for this pattern,
hosted by Mimi G. This video features step by step instructions and helpful
pattern insight. Enjoy!



Sewing Directions

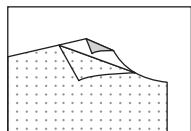
FABRIC KEY



Read **General Directions** on page 4 before you begin.

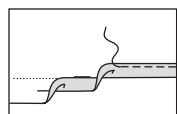
GLOSSARY OF SEWING METHODS

Sewing methods shown in *ITALICS* are defined below:



INTERFACING

INTERFACING- Pin interfacing to **WRONG** side of fabric. Fuse interfacing in place following manufacturer's directions.



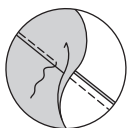
NARROW HEM

NARROW HEM- Press under hem allowance as indicated on tissue pattern. To form narrow hem, tuck under raw edge to meet crease. Press. Stitch hem in place.



STAY-STITCH

STAY-STITCH- Stitch 1/2" (1.3cm) from cut edge in direction of arrows. This stitching stays in permanently to prevent stretching on curved edges. (Shown only in the first illustration.)



UNDERSTITCH

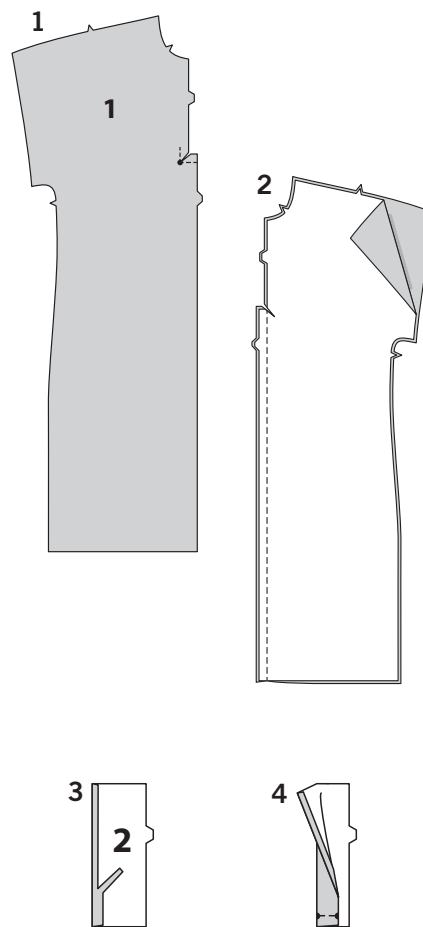
UNDERSTITCH- Press facing and seam away from garment, stitching through facing and seam allowances close to seam.

DRESS A, B

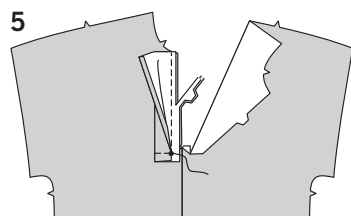
NOTE: View A will be illustrated, unless otherwise indicated.

NOTE: For knit fabrics stay-stitching is optional.

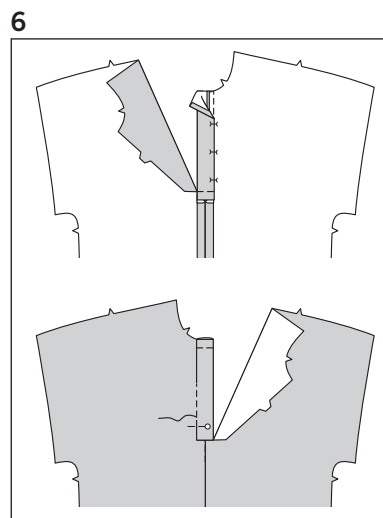
FRONT AND BACK



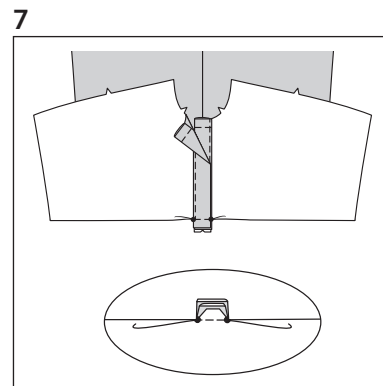
1. To reinforce front (1), stitch along stitching line, as shown. Clip diagonally to small dots, being careful not to clip through stitching.
2. With **RIGHT** sides together, pin front sections together at center front seam, matching notches. Stitch.
3. Press under 5/8" (1.5cm) on unnotched edge of placket (2). Trim to 1/4" (6mm).
4. With **WRONG** sides together, fold placket in half along fold line. Press. Baste lower raw edges together.



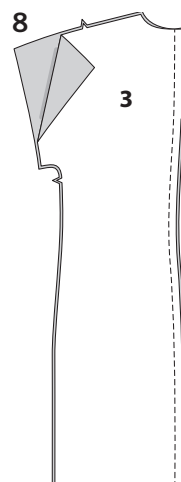
5. With RIGHT sides together, pin placket to RIGHT front opening edge, matching small dots. Stitch seam ending at small dot, keeping pressed edge of placket free. Back-stitch at small dot to reinforce seam. Trim seam and lower corner.



6. Press seam toward placket. On INSIDE, pin pressed edge of placket over seam. On OUTSIDE, stitch in the ditch or "groove" of seam, catching in pressed edge of placket on INSIDE. Baste upper raw edges together.



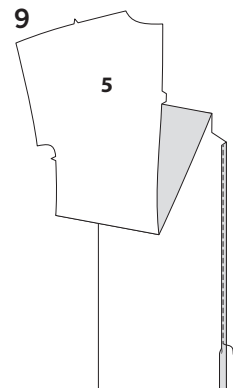
7. Apply remaining placket to LEFT front edge in same manner. On INSIDE, lap LEFT placket over RIGHT, matching small dots. Pin lower edge of plackets and clipped edge of front together. Stitch between small dots; back-stitch to reinforce seam.



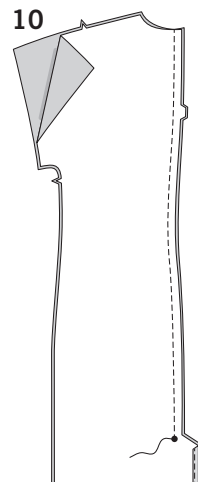
FOR VIEW A

8. With RIGHT sides together, pin back (3) sections together at center back seam, matching notches. Stitch.

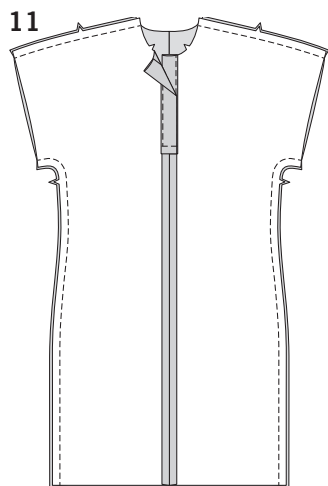
FOR VIEW B



9. Make **NARROW HEM** at right back (5) extension edge, as shown.

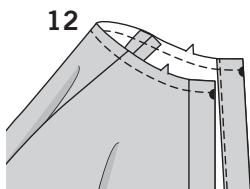


10. With RIGHT sides together, pin back sections together at center back seam, matching notches. Stitch, ending stitching at large dot.



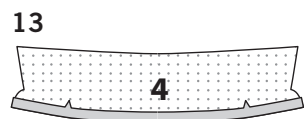
FOR VIEWS A, B

- 11.** With RIGHT sides together, pin front to back at shoulder and overarm edges, matching notches. Pin front to back at side and underarm edges, matching notches. Stitch.

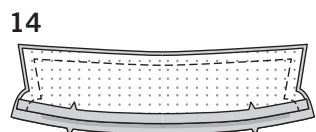


COLLAR

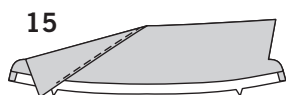
- 12.** **STAYSTITCH** neck edge.



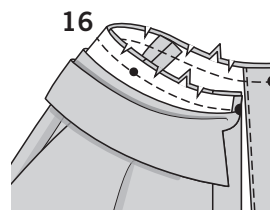
- 13.** Apply **INTERFACING** to collar (4). For facing, press under seam allowance on lower edge of interfaced collar section.



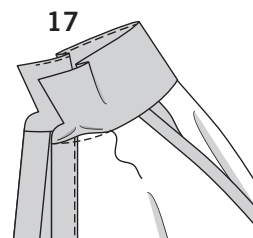
- 14.** With RIGHT sides together, pin collar facing to collar, matching centers and symbols. Stitch outer edges of collar leaving lower edge open. Trim seam. **UNDERSTITCH** collar as far as possible.



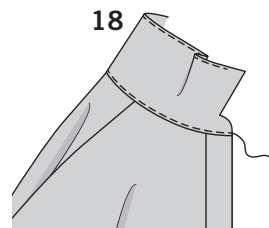
- 15.** Turn collar RIGHT side out. Press.



- 16.** On OUTSIDE, pin collar to neck edge, matching centers and placing small dots at shoulder seams, matching remaining large dots, clipping to stay-stitching if necessary. Stitch, keeping pressed edge free. Trim seam.

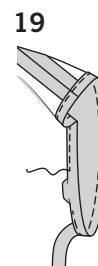


- 17.** Press seam toward collar. **SLIPSTITCH** pressed edge over seam.



- 18.** On OUTSIDE, stitch close to lower edge of collar, as shown.

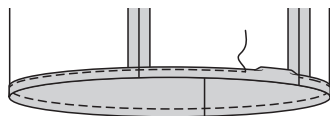
FINISHING



- 19.** Press up hem 3/4" (2cm). Press under 1/4" (6mm) on raw edge. Stitch close to inner pressed edge.

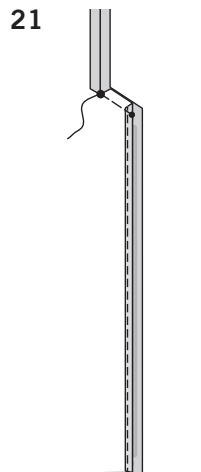
FOR VIEW A

20



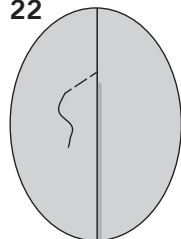
- 20.** Mark dress length. Press up hem along marking. Mark depth of hem; trim evenly. Press under 1/4" (6mm) on raw edge. Stitch close to inner pressed edge.

21



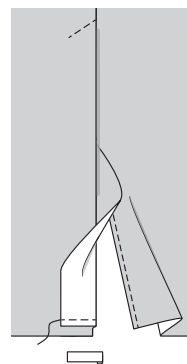
- 21.** Clip right back seam allowance above extension. Turn extension toward left back along foldline; press along foldline. Baste across upper edge of extension, as shown.

22



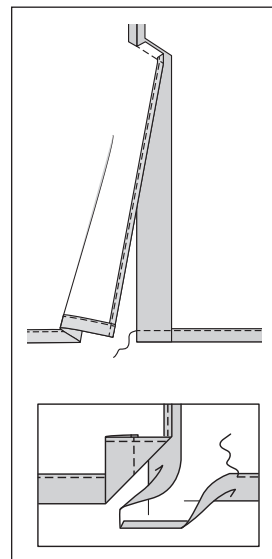
- 22.** On OUTSIDE, stitch left back along stitching line, as shown.

23



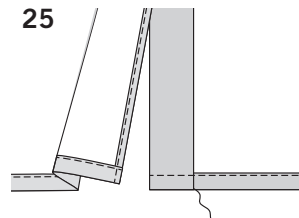
- 23.** Mark dress length. Mark depth of hem; trim evenly. Turn LEFT back vent extension to OUTSIDE, forming a facing. Stitch across facing along hem marking. Trim facing close to stitching. Trim garment to within 5/8" (1.5cm) of inner edge of facing.

24



- 24.** Turn facing to INSIDE; press, pressing up hem along marking. Press under 1/4" (6mm) on raw edge. Stitch close to inner pressed edge, continuing stitching across facing, as shown.

25



- 25.** **SLIPSTITCH** facing to hem. **SLIPSTITCH** right back opening edges together.



Congrats!


You've completed your sewing adventure!

SHARE YOUR look!



Post your pattern and tag us at
@simplicity_creative_group and use #simplicitypatterns
for a chance to be featured on our social media!

Look for more Simplicity PDF patterns at **Simplicity.com**

 1-888-588-2700

© 2023 IG Design Group Americas, Inc. | All Rights Reserved
Sold for individual home use only and not for commercial or manufacturing purposes.