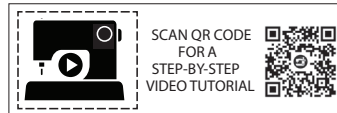


Simplicity®

mi g A DIY & LIFESTYLE BRAND

S9740



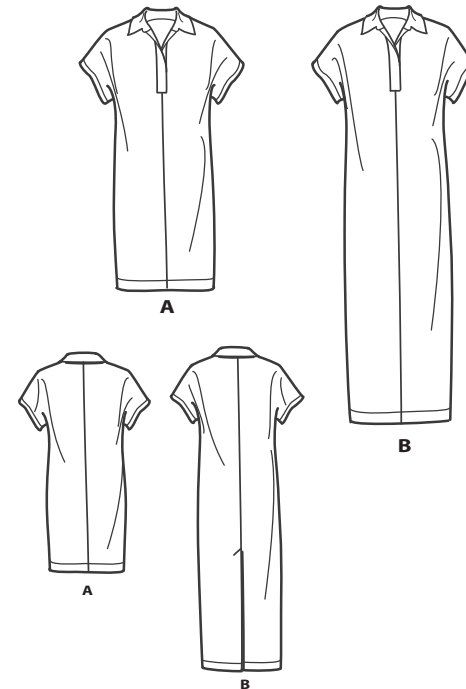
>> MISSES' KNIT DRESS
IN TWO LENGTHS
SKILL LEVEL: AVERAGE



PDF PATTERNS

SUGGESTED FABRICS:

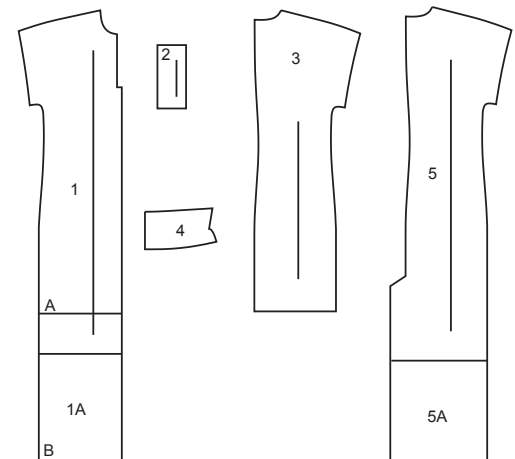
> Stretch Knits only such as Double Knit, Interlock, Jersey, Lightweight Ponte. See Pick-A-Knit® Rule. **Interfacing:** Lightweight Fusible.



Your printed tile pieces should be assembled before you move on to this step!

PIECES (5)

- 1 FRONT - A,B
- 1A EXTENSION B
- 2 PLACKET - A,B
- 3 BACK A
- 4 COLLAR - A,B
- 5 BACK - B
- 5A EXTENSION B



STRETCH GAUGE - MEASURING FABRIC STRETCH

Whenever you see a minimum stretch requirement on one of the sewing patterns, it is important that you measure the fabric stretch in both length and width!



YARDAGE CHART

SIZES	4	6	8	10	12	14	16	18	20	
INTERFACING A,B										
20"	5/8	5/8	5/8	5/8	3/4	3/4	3/4	3/4	3/4	yds.
51cm	0.6	0.6	0.6	0.6	0.6	0.7	0.7	0.7	0.7	m.
DRESS A										
60"*	1½	1½	1½	1½	1½	1½	1⅝	1⅝	1⅝	yds.
150cm*	1.4	1.4	1.4	1.4	1.4	1.4	1.4	1.5	1.5	m.
DRESS B										
60"*	2	2	2	2	2⅛	2⅛	2½	2½	3½	yds.
150cm*	1.9	1.9	1.9	1.9	1.9	2.0	2.3	2.3	3.2	m.

FINISHED GARMENT MEASUREMENTS

SIZES	4	6	8	10	12	14	16	18	20	
A,B BUST	32½	33½	34½	35½	37	39	41	43	45	ins.
	83	85	88	90	94	99	104	109	114	cm.
A,B WAIST	31½	32½	33½	34½	36	38	40	42	44	ins.
	80	83	85	88	91	97	102	107	112	cm.
A,B HIP	34½	35½	36½	37½	39	41	43	45	47	ins.
	88	90	93	95	99	104	109	114	119	cm.

FINISHED GARMENT MEASUREMENTS CONTINUED

SIZES	4	6	8	10	12	14	16	18	20	
WIDTH, LOWER EDGE										
DRESS A,B	35	36	37	38	39½	41½	43½	45½	47½	ins.
	89	91	94	97	100	105	110	116	121	cm.
FINISHED BACK LENGTH FROM BASE OF NECK										
DRESS A	35¼	35½	35¾	36	36¼	36½	36¾	37	37¼	ins.
	90	90	91	92	92	93	93	94	95	cm.
DRESS B	55¼	55½	55¾	56	56¼	56½	56¾	57	57¼	ins.
	140	141	142	142	143	144	144	145	145	cm.








BODY MEASUREMENTS

SIZES	4	6	8	10	12	14	16	18	20	
BUST	29½	30½	31½	32½	34	36	38	40	42	ins.
	75	78	80	83	87	92	97	102	107	cm.
WAIST	22	23	24	25	26½	28	30	32	34	ins.
	56	58	61	64	67	71	76	81	87	cm.
HIP-9" (23 CM) BELOW WAIST	31½	32½	33½	34½	36	38	40	42	44	ins.
	80	83	85	88	92	97	102	107	112	cm.
BACK-NECK TO WAIST	15¼	15½	15¾	16	16¼	16½	16¾	17	17¼	ins.
	38.5	39.5	40	40.5	41.5	42	42.5	43	44	cm.

General Directions

The Pattern

SYMBOLS

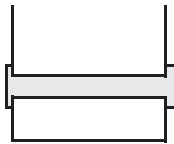
-  GRAIN LINE Place on straight grain of fabric parallel to selvage
-  PLACE SOLID LINE on fold of fabric.
-  CENTER FRONT OR BACK of garment.
-  NOTCHES
-  DOTS
-  CUTTING LINE
-  LENGTHEN OR SHORTEN LINES

SEAM ALLOWANCE: 5/8" (1.5cm) unless otherwise stated is included but not printed on MULTI-SIZE PATTERNS. Mark your size with colored felt tip pen. See chart on tissue for how to use MULTI-SIZE PATTERNS.

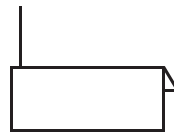
ADJUST IF NEEDED

Make adjustments before placing pattern on fabric.

TO LENGTHEN:
Cut pattern between lengthen or shorten lines. Spread pattern evenly, the amount needed and tape to paper.



TO SHORTEN:
At lengthen or shorten lines, make an even pleat taking up amount needed. Tape in place.



When lengthen or shorten lines are not given, make adjustments at lower edge of pattern.

Cutting/Marking

BEFORE CUTTING:

PRESS pattern pieces with a warm dry iron. PRE-SHRINK fabric by pre-washing washables or steam-pressing non-washables.

CIRCLE your cutting layout.

PIN pattern to fabric as shown in Cutting Layouts.

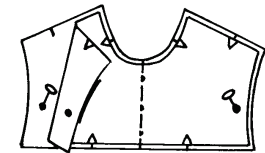
- FOR DOUBLE THICKNESS: Fold fabric with RIGHT sides together.
- FOR SINGLE THICKNESS: Place fabric RIGHT side up.
- FOR PILE, SHADED OR ONE WAY DESIGN FABRICS: Use "with nap" layouts

AFTER CUTTING:

Transfer markings to WRONG side of fabric before removing pattern. Use pin and chalk method or dressmaker's tracing paper and wheel.

To Quick Mark:

- Snip edge of fabric to mark notches, ends of fold lines and center lines.
- Pin mark dots.

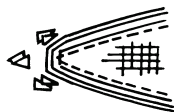


Sewing

- SEW garment following **Sewing Directions**.
- PIN or machine-baste seams matching notches.
- STITCH 5/8" (1.5 cm) seams unless otherwise stated.
- PRESS seams open unless otherwise indicated clipping when necessary so seams will lie flat.
- TRIM seams to reduce bulk, as shown below.



Trim enclosed seams into layers



Trim corners



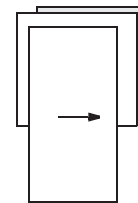
Clip inner curves



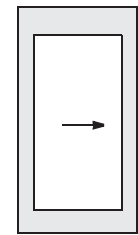
Notch outer curves

SPECIAL CUTTING NOTES

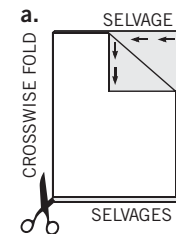
★ If layout shows a piece extending past fold, cut out all pieces except piece that extends.



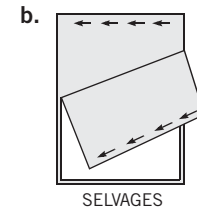
Open out fabric to single thickness. Cut extending piece on RIGHT side of fabric in position shown.



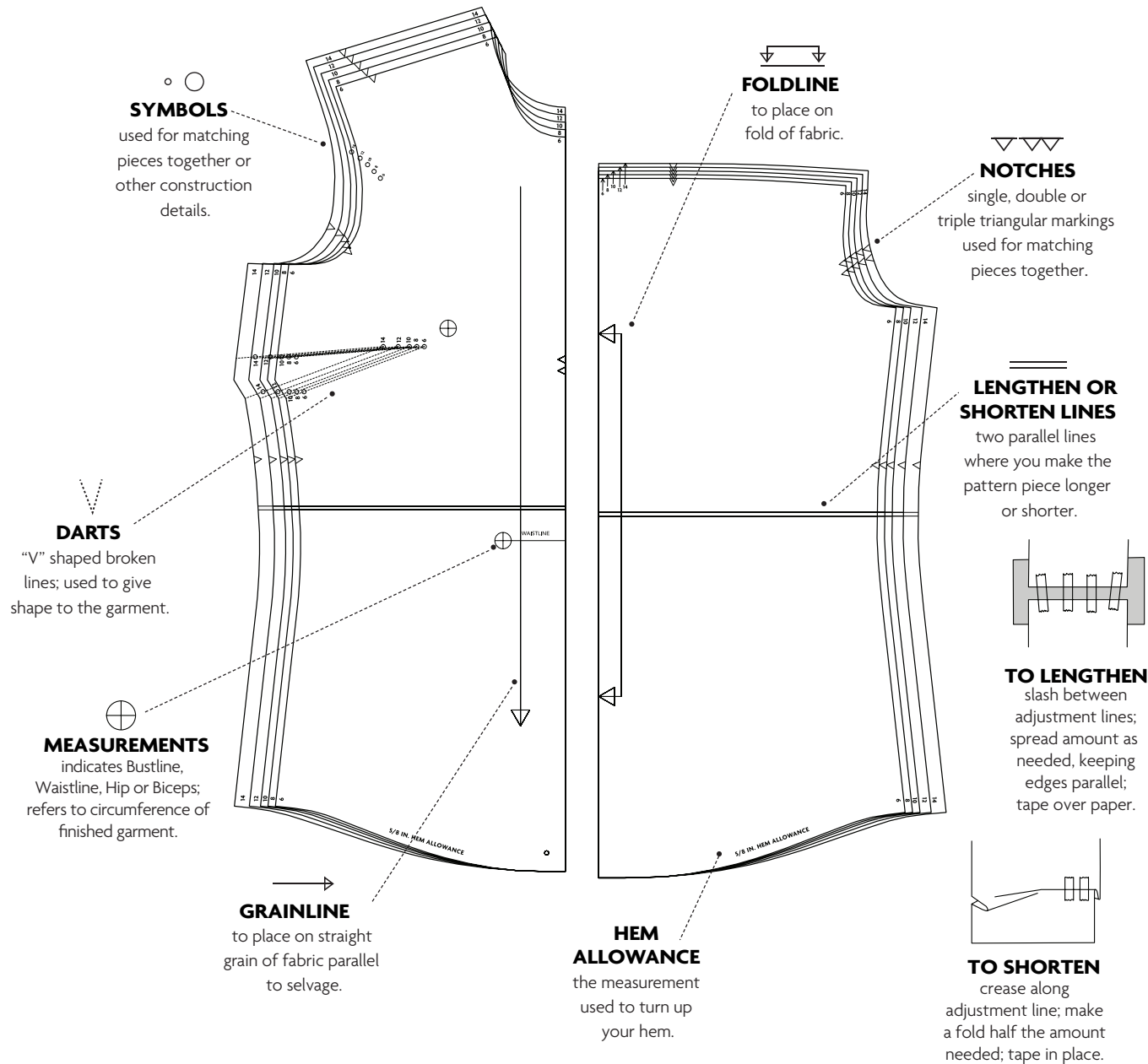
✱ Mark small arrows along both selvages indicating direction of nap or design. Fold fabric crosswise with RIGHT sides together, and cut along fold (a).



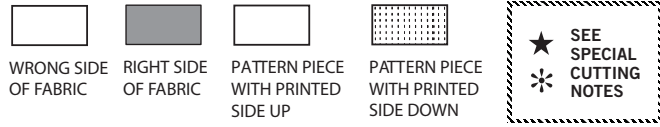
Turn one fabric layer around so arrows on both layers go in the same direction. Place RIGHT sides together (b).



PATTERN MARKINGS



Cutting Layouts



POSITION OF PATTERN PIECES MAY VARY SLIGHTLY ACCORDING TO YOUR PATTERN SIZE

ALL VIEWS ARE SIZED FOR STRETCH KNITS ONLY

INTERFACING A,B

USE PIECE 4

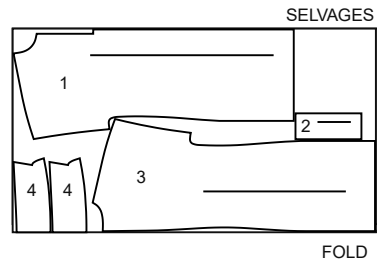
20" (51CM)
ALL SIZES



DRESS A

USE PIECES 1 2 3 4

60" (150CM)
WITH NAP
ALL SIZES

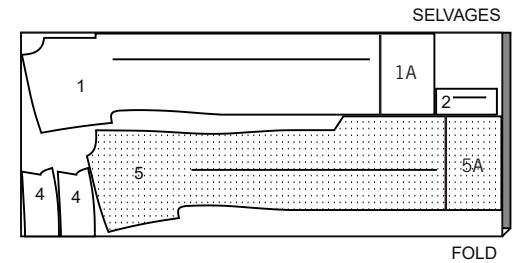


NOTE: BEFORE CUTTING FABRIC, JOIN PIECE IN PARENTHESIS TO CORRESPONDING PIECE FOLLOWING INSTRUCTIONS ON TISSUE PATTERN.

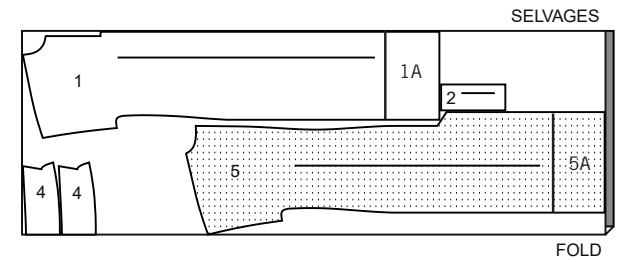
DRESS B

USE PIECES 1(1A) 2 4 5(5A)

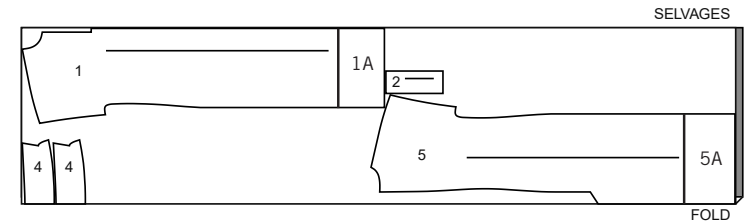
60" (150CM)
WITH NAP
SIZES 4 6 8 10 12 14



60" (150CM)
WITH NAP
SIZES 16 18



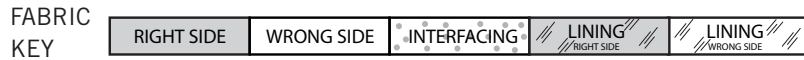
60" (150CM)
WITH NAP
SIZE 20



Congratulations on purchasing a Mimi G for Simplicity Sew Along Pattern. Please scan the QR code below to link to the Sew Along video for this pattern, hosted by Mimi G. This video features step by step instructions and helpful pattern insight. Enjoy!



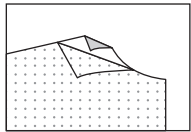
Sewing Directions



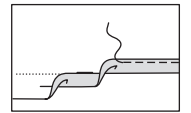
Read **General Directions** on page 4 before you begin.

GLOSSARY OF SEWING METHODS

Sewing methods shown in *ITALICS* are defined below:



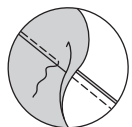
INTERFACING



NARROW HEM



STAY-STITCH



UNDERSTITCH

INTERFACING- Pin interfacing to **WRONG** side of fabric. Fuse interfacing in place following manufacturer's directions.

NARROW HEM- Press under hem allowance as indicated on tissue pattern. To form narrow hem, tuck under raw edge to meet crease. Press. Stitch hem in place.

STAY-STITCH- Stitch 1/2" (1.3cm) from cut edge in direction of arrows. This stitching stays in permanently to prevent stretching on curved edges. (Shown only in the first illustration.)

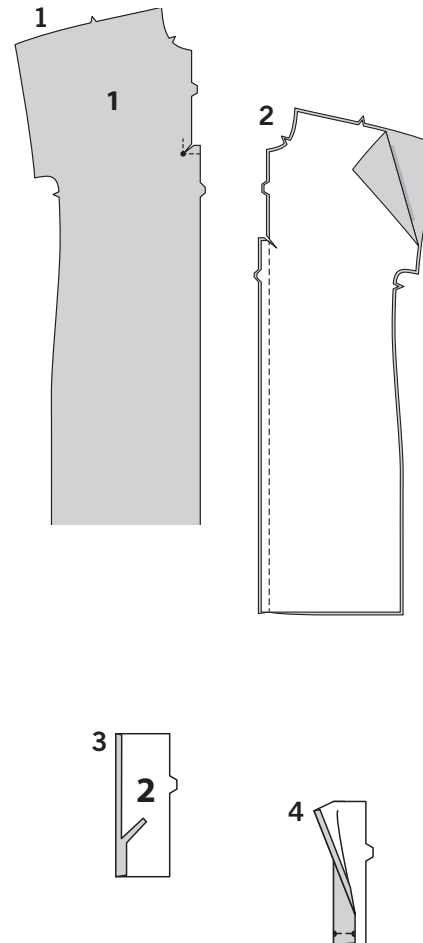
UNDERSTITCH- Press facing and seam away from garment, stitching through facing and seam allowances close to seam.

DRESS A, B

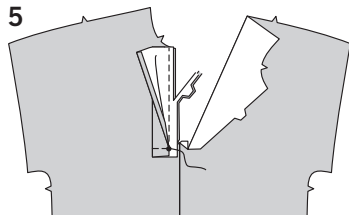
NOTE: View A will be illustrated, unless otherwise indicated.

NOTE: For knit fabrics stay-stitching is optional.

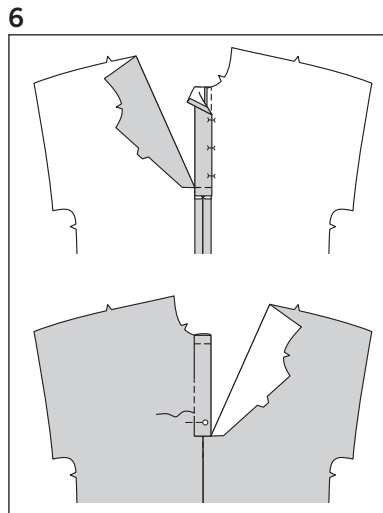
FRONT AND BACK



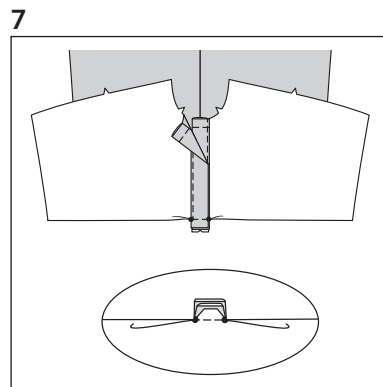
1. To reinforce front (1), stitch along stitching line, as shown. Clip diagonally to small dots, being careful not to clip through stitching.
2. With **RIGHT** sides together, pin front sections together at center front seam, matching notches. Stitch.
3. Press under 5/8" (1.5cm) on unnotched edge of placket (2). Trim to 1/4" (6mm).
4. With **WRONG** sides together, fold placket in half along fold line. Press. Baste lower raw edges together.



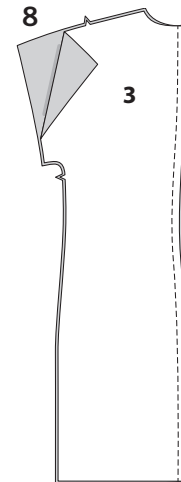
- 5.** With RIGHT sides together, pin placket to RIGHT front opening edge, matching small dots. Stitch seam ending at small dot, keeping pressed edge of placket free. Back-stitch at small dot to reinforce seam. Trim seam and lower corner.



- 6.** Press seam toward placket. On INSIDE, pin pressed edge of placket over seam. On OUTSIDE, stitch in the ditch or "groove" of seam, catching in pressed edge of placket on INSIDE. Baste upper raw edges together.

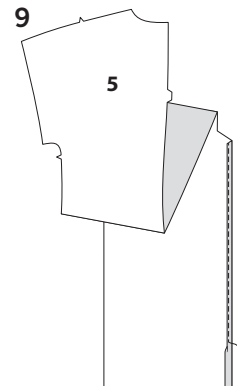


- 7.** Apply remaining placket to LEFT front edge in same manner. On INSIDE, lap LEFT placket over RIGHT, matching small dots. Pin lower edge of plackets and clipped edge of front together. Stitch between small dots; back-stitch to reinforce seam.



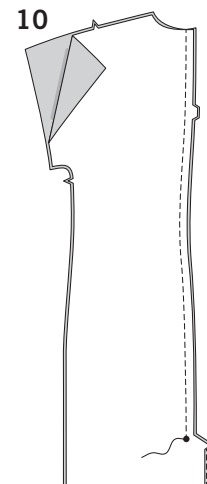
FOR VIEW A

- 8.** With RIGHT sides together, pin back (3) sections together at center back seam, matching notches. Stitch.



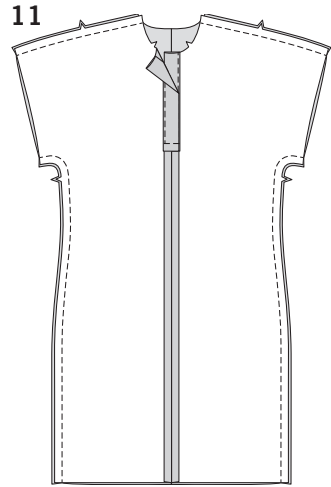
FOR VIEW B

- 9.** Make **NARROW HEM** at right back (5) extension edge, as shown.



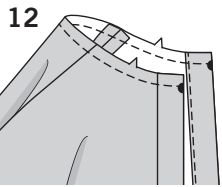
- 10.** With RIGHT sides together, pin back sections together at center back seam, matching notches. Stitch, ending stitching at large dot.

FOR VIEWS A, B

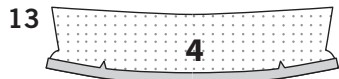


11. With RIGHT sides together, pin front to back at shoulder and overarm edges, matching notches. Pin front to back at side and underarm edges, matching notches. Stitch.

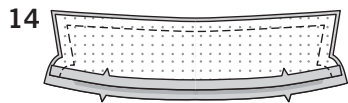
COLLAR



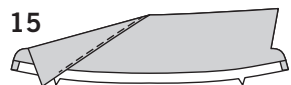
12. *STAYSTITCH* neck edge.



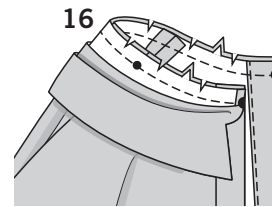
13. Apply *INTERFACING* to collar (4). For facing, press under seam allowance on lower edge of interfaced collar section.



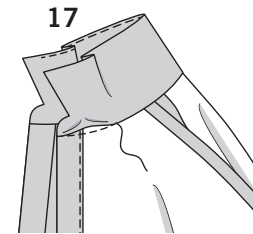
14. With RIGHT sides together, pin collar facing to collar, matching centers and symbols. Stitch outer edges of collar leaving lower edge open. Trim seam. *UNDERSTITCH* collar as far as possible.



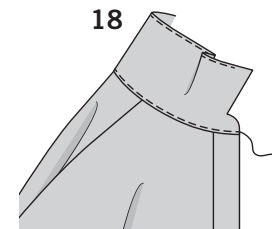
15. Turn collar RIGHT side out. Press.



16. On OUTSIDE, pin collar to neck edge, matching centers and placing small dots at shoulder seams, matching remaining large dots, clipping to stay-stitching if necessary. Stitch, keeping pressed edge free. Trim seam.

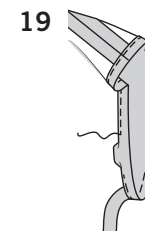


17. Press seam toward collar. *SLIPSTITCH* pressed edge over seam.



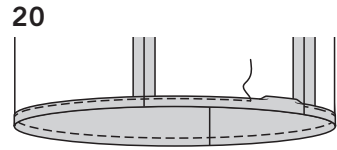
18. On OUTSIDE, stitch close to lower edge of collar, as shown.

FINISHING



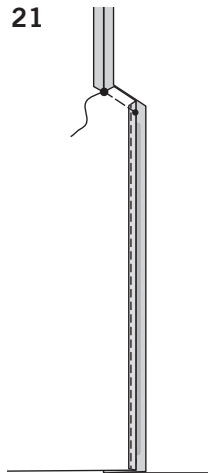
19. Press up hem 3/4" (2cm). Press under 1/4" (6mm) on raw edge. Stitch close to inner pressed edge.

FOR VIEW A

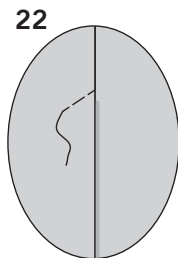


20. Mark dress length. Press up hem along marking. Mark depth of hem; trim evenly. Press under 1/4" (6mm) on raw edge. Stitch close to inner pressed edge.

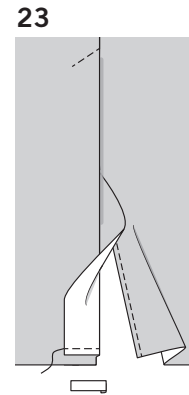
FOR VIEW B



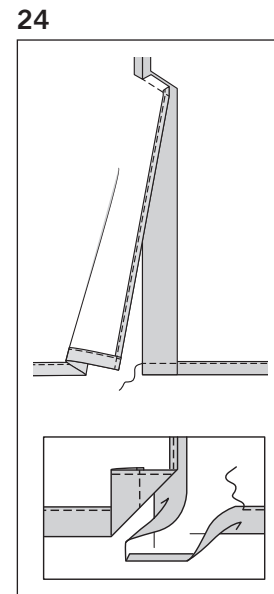
21. Clip right back seam allowance above extension. Turn extension toward left back along foldline; press along foldline. Baste across upper edge of extension, as shown.



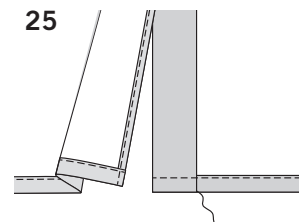
22. On OUTSIDE, stitch left back along stitching line, as shown.



23. Mark dress length. Mark depth of hem; trim evenly. Turn LEFT back vent extension to OUTSIDE, forming a facing. Stitch across facing along hem marking. Trim facing close to stitching. Trim garment to within 5/8" (1.5cm) of inner edge of facing.



24. Turn facing to INSIDE; press, pressing up hem along marking. Press under 1/4" (6mm) on raw edge. Stitch close to inner pressed edge, continuing stitching across facing, as shown.



25. **SLIPSTITCH** facing to hem. **SLIPSTITCH** right back opening edges together.



Congrats!


You've completed your sewing adventure!

SHARE YOUR look!



Post your pattern and tag us at
@simplicity_creative_group and use #simplicitypatterns
for a chance to be featured on our social media!

Look for more Simplicity PDF patterns at **Simplicity.com**

 1-888-588-2700

© 2023 IG Design Group Americas, Inc. | All Rights Reserved
Sold for individual home use only and not for commercial or manufacturing purposes.