

Simplicity®

mi g A DIY & LIFESTYLE BRAND

S8889



>> MISSES' SHIRT AND WIDE LEG PANTS



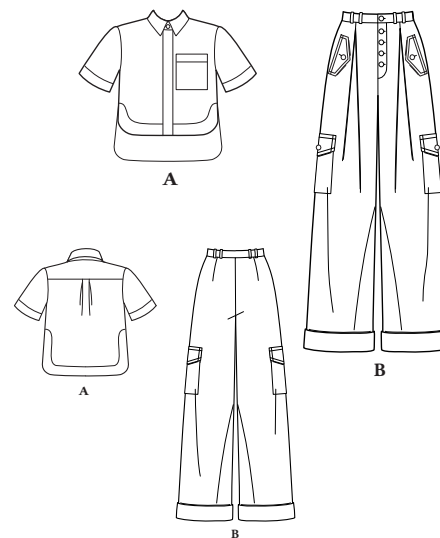
PDF PATTERNS

THINGS YOU NEED:

> Thread. **A:** Six ½" (1.3cm) buttons. **B:** Nine ⅝" (1.5cm) buttons.

SUGGESTED FABRICS:

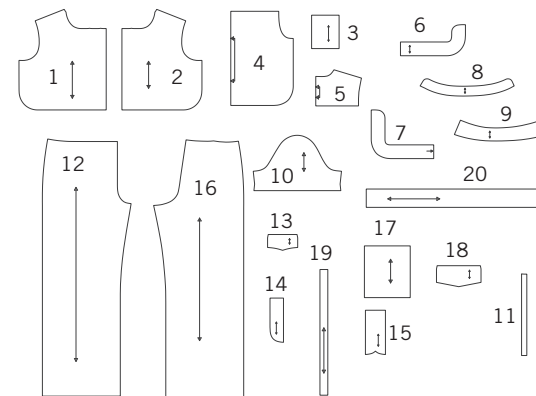
> Cotton Types, Linen Types. **A** also in Chambray, Poplin, Shirtings. **B** also in Challis, Crepe, Gabardine. Extra fabric needed to match plaids, stripes or one-way design fabrics.



Your printed tile pieces should be assembled before you move on to this step!

PIECES (20)

- 1-RIGHT FRONT -A
- 2-LEFT FRONT -A
- 3-POCKET -A
- 4-BACK -A
- 5-YOKE BACK -A
- 6-FRONT FACING -A
- 7-BACK FACING -A
- 8-NECKBAND -A
- 9-COLLAR -A
- 10-SLEEVE -A
- 11-BUTTONHOLE GUIDE -A
- 12-FRONT -B
- 13-FLAP -B
- 14-FLY -B
- 15-UNDERLAP -B
- 16-BACK -B
- 17-SIDE POCKET -B
- 18-SIDE FLAP -B
- 19-CARRIER -B
- 20-WAISTBAND -B



YARDAGE CHART

SIZES	6	8	10	12	14	16	18	20	22	24	
A SHIRT											
45"***	1 $\frac{5}{8}$	1 $\frac{5}{8}$	1 $\frac{5}{8}$	1 $\frac{5}{8}$	1 $\frac{5}{8}$	1 $\frac{5}{8}$	1 $\frac{5}{8}$	1 $\frac{7}{8}$	1 $\frac{7}{8}$	1 $\frac{7}{8}$	yds.
60"***	1 $\frac{1}{4}$	1 $\frac{1}{4}$	1 $\frac{1}{4}$	1 $\frac{1}{4}$	1 $\frac{1}{4}$	1 $\frac{3}{8}$	1 $\frac{3}{8}$	1 $\frac{3}{8}$	1 $\frac{3}{8}$	1 $\frac{3}{8}$	"
115cm**	1.40	1.40	1.40	1.40	1.40	1.40	1.50	1.70	1.70	1.80	m.
150cm**	1.20	1.20	1.20	1.20	1.20	1.20	1.20	1.20	1.20	1.30	"
INTERFACING- $\frac{3}{8}$ yd. (0.30m) of 20" to 25" (51cm to 64cm) lightweight fusible											
B PANTS											
45"***	2 $\frac{7}{8}$	2 $\frac{7}{8}$	3 $\frac{1}{8}$	3 $\frac{1}{8}$	3 $\frac{1}{8}$	3 $\frac{1}{8}$	3 $\frac{1}{4}$	3 $\frac{1}{4}$	3 $\frac{1}{4}$	3 $\frac{1}{4}$	yds.
60"***	1 $\frac{7}{8}$	2	2 $\frac{1}{2}$	2 $\frac{1}{2}$	2 $\frac{1}{2}$	2 $\frac{5}{8}$	2 $\frac{5}{8}$	2 $\frac{7}{8}$	3	3	"
115cm**	2.60	2.60	2.80	2.80	2.80	2.90	2.90	2.90	2.90	3.00	m.
150cm**	1.70	1.80	2.30	2.30	2.30	2.40	2.40	2.60	2.70	2.70	"
INTERFACING- 1 $\frac{3}{8}$ yd. (1.20m) of 20" to 25" (51cm to 64cm) lightweight fusible											

FINISHED GARMENT MEASUREMENTS

SIZES	6	8	10	12	14	16	18	20	22	24	
A BUST	36	37	38	39 $\frac{1}{2}$	41 $\frac{1}{2}$	43 $\frac{1}{2}$	45 $\frac{1}{2}$	47 $\frac{1}{2}$	49 $\frac{1}{2}$	51 $\frac{1}{2}$	ins.
	91.5	94	96.5	100.5	106	111	116	121	126	131	cm.
B HIP	40 $\frac{1}{2}$	41 $\frac{1}{2}$	42 $\frac{1}{2}$	44	46	48	50	52	55	57	ins.
	103	106	108	112	117	122	127	132	140	145	cm.
FINISHED BACK LENGTH FROM BASE OF NECK											
A	20	20 $\frac{1}{4}$	20 $\frac{1}{2}$	20 $\frac{3}{4}$	21	21 $\frac{1}{4}$	21 $\frac{1}{2}$	21 $\frac{3}{4}$	22	22 $\frac{1}{4}$	ins.
	51	51.5	52	52.5	53.5	54	54.5	55	56	56.5	cm.

FINISHED GARMENT MEASUREMENTS (CONTINUED)

SIZES	6	8	10	12	14	16	18	20	22	24	
B SIDE LENGTH	39½	39¾	40	40¼	40½	40¾	41	41¼	41½	41¾	ins.
	100.5	101	102	102	103	104	104	105	106	106	cm.
B LEG WIDTH	22½	23¼	24	25	26	27¾	28½	29¾	31½	32¾	ins.
	57	59	61	63.5	66	70.5	72.5	75.5	80	83	cm.








BODY MEASUREMENTS

SIZES	6	8	10	12	14	16	18	20	22	24	
BUST	30½	31½	32½	34	36	38	40	42	44	46	ins.
	78	80	83	87	92	97	102	107	112	117	cm.
WAIST	23	24	25	26½	28	30	32	34	37	39	ins.
	58	61	64	67	71	76	81	87	94	99	cm.
HIP-9" (23CM) BELOW WAIST	32½	33½	34½	36	38	40	42	44	46	48	ins.
	83	85	88	92	97	102	107	112	117	122	cm.
BACK-NECK TO WAIST	15½	15¾	16	16¼	16½	16¾	17	17¼	17⅝	17½	ins.
	39.5	40	40.5	41.5	42	42.5	43	44	44	44.5	cm.

General Directions

The Pattern

SYMBOLS

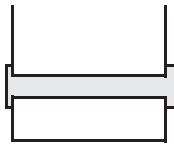
-  GRAIN LINE Place on straight grain of fabric parallel to selvage
-  PLACE SOLID LINE on fold of fabric.
-  CENTER FRONT OR BACK of garment.
-  NOTCHES
-  DOTS
-  CUTTING LINE
-  LENGTHEN OR SHORTEN LINES

SEAM ALLOWANCE: 5/8" (1.5cm) unless otherwise stated is included but not printed on MULTI-SIZE PATTERNS. Mark your size with colored felt tip pen. See chart on tissue for how to use MULTI-SIZE PATTERNS.

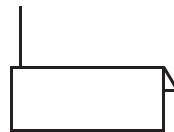
ADJUST IF NEEDED

Make adjustments before placing pattern on fabric.

TO LENGTHEN:
Cut pattern between lengthen or shorten lines. Spread pattern evenly, the amount needed and tape to paper.



TO SHORTEN:
At lengthen or shorten lines, make an even pleat taking up amount needed. Tape in place.



When lengthen or shorten lines are not given, make adjustments at lower edge of pattern.

Cutting/Marking

BEFORE CUTTING:

PRESS pattern pieces with a warm dry iron. PRE-SHRINK fabric by pre-washing washables or steam-pressing non-washables.

CIRCLE your cutting layout.

PIN pattern to fabric as shown in Cutting Layouts.

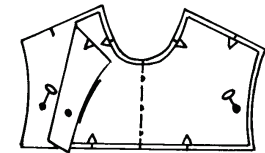
- FOR DOUBLE THICKNESS: Fold fabric with RIGHT sides together.
- FOR SINGLE THICKNESS: Place fabric RIGHT side up.
- FOR PILE, SHADED OR ONE WAY DESIGN FABRICS: Use "with nap" layouts

AFTER CUTTING:

Transfer markings to WRONG side of fabric before removing pattern. Use pin and chalk method or dressmaker's tracing paper and wheel.

To Quick Mark:

- Snip edge of fabric to mark notches, ends of fold lines and center lines.
- Pin mark dots.

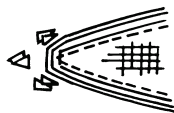


Sewing

- SEW garment following **Sewing Directions**.
- PIN or machine-baste seams matching notches.
- STITCH 5/8" (1.5 cm) seams unless otherwise stated.
- PRESS seams open unless otherwise indicated clipping when necessary so seams will lie flat.
- TRIM seams to reduce bulk, as shown below.



Trim enclosed seams into layers



Trim corners



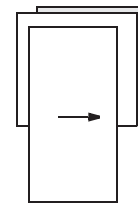
Clip inner curves



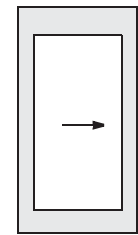
Notch outer curves

SPECIAL CUTTING NOTES

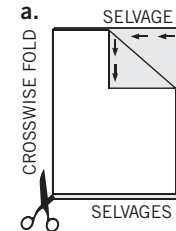
★ If layout shows a piece extending past fold, cut out all pieces except piece that extends.



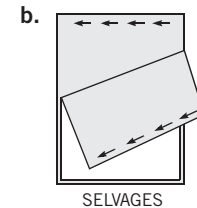
Open out fabric to single thickness. Cut extending piece on RIGHT side of fabric in position shown.



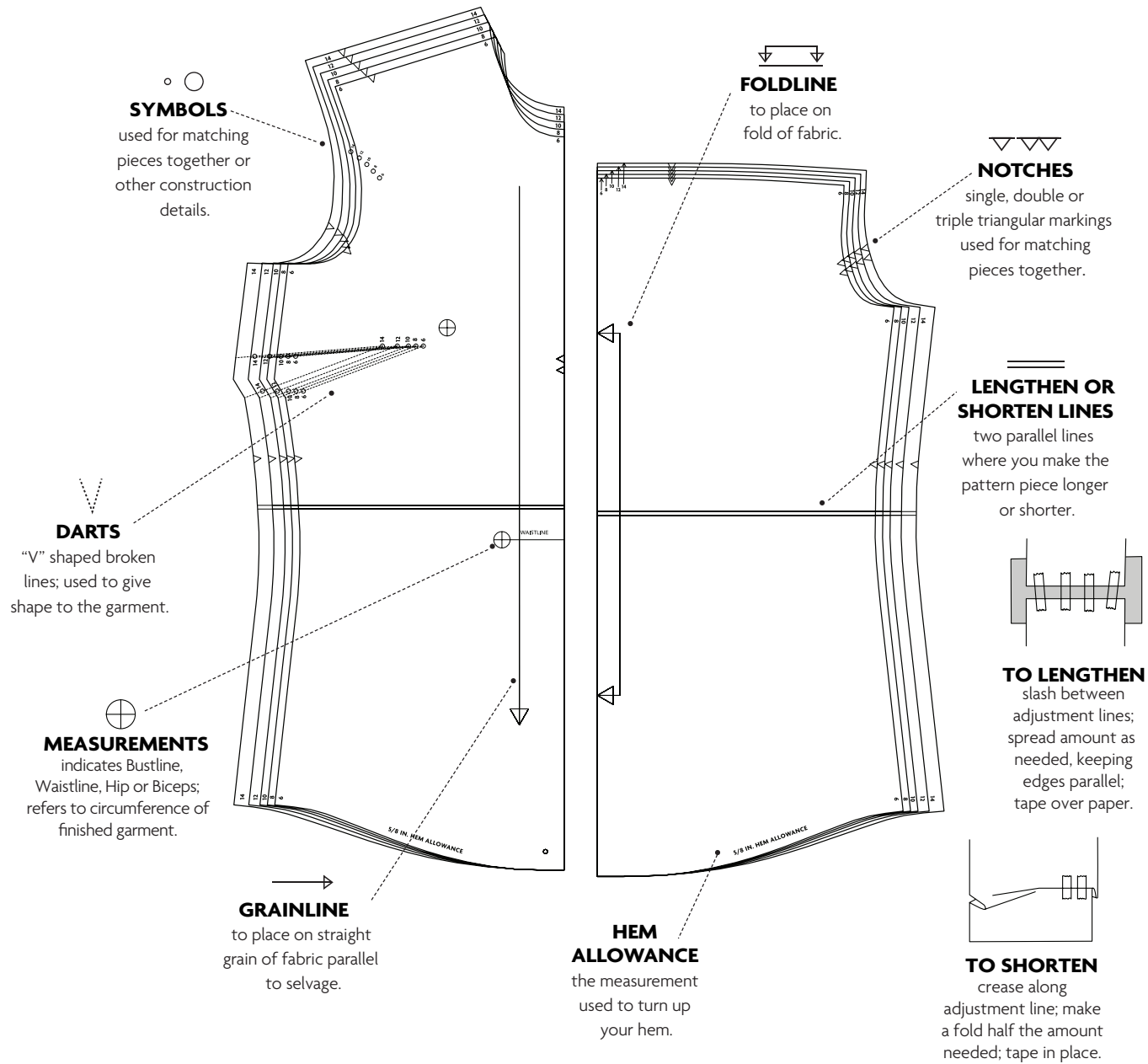
✱ Mark small arrows along both selvages indicating direction of nap or design. Fold fabric crosswise with RIGHT sides together, and cut along fold (a).



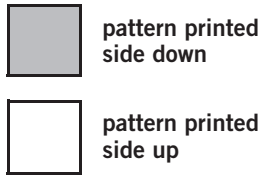
Turn one fabric layer around so arrows on both layers go in the same direction. Place RIGHT sides together (b).



PATTERN MARKINGS



Cutting Layouts

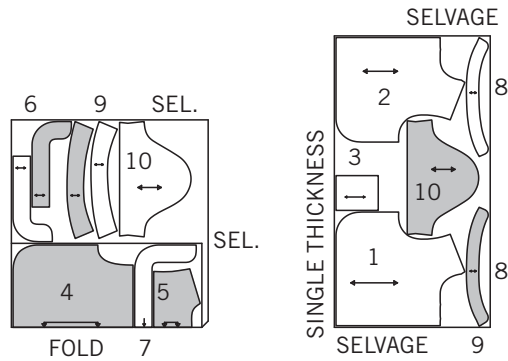


POSITION OF PATTERN PIECES MAY VARY SLIGHTLY ACCORDING TO YOUR PATTERN SIZE

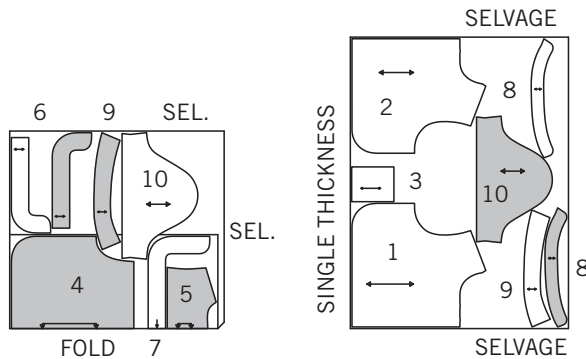
A SHIRT

USE PIECES 1 2 3 4 5 6 7 8 9 10

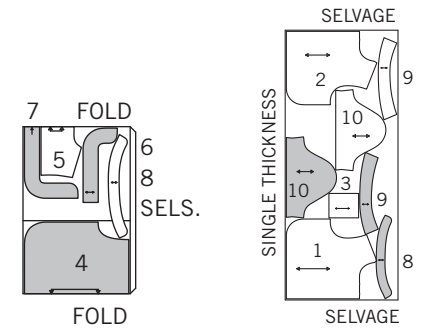
44" 45" (115CM)
WITH NAP
SIZES 6 8 10 12 14 16 18



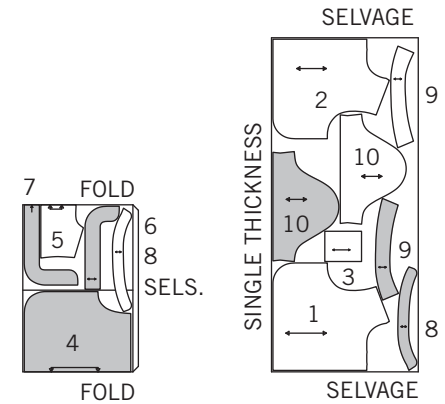
44" 45" (115CM)
WITH NAP
SIZES 20 22 24



58" 60" (150CM)
WITH NAP
SIZES 6 8 10 12 14 16 18



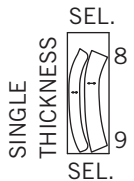
58" 60" (150CM)
WITH NAP
SIZES 20 22 24



INTERFACING

USE PIECES 8 9

20" TO 25" (51CM TO 64CM) FUSIBLE
ALL SIZES



SINCE THERE IS NO OPPORTUNITY TO CHANGE THE LENGTH OF GARMENT ONCE IT HAS BEEN CUT AND SEWN, IT WILL BE NECESSARY TO MAKE LENGTH ADJUSTMENTS TO PATTERN PIECES BEFORE CUTTING

B PANTS

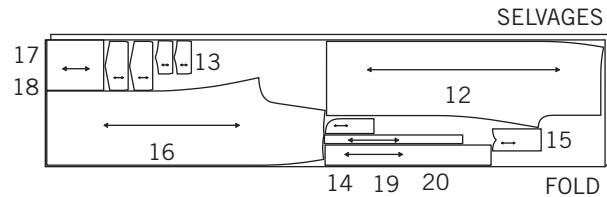
USE PIECES 12 13 14 15 16 17 18 19 20

44" 45" (115CM)

WITH NAP

SIZES 6 8

CUT ONE OF PIECES 14 15 19 20

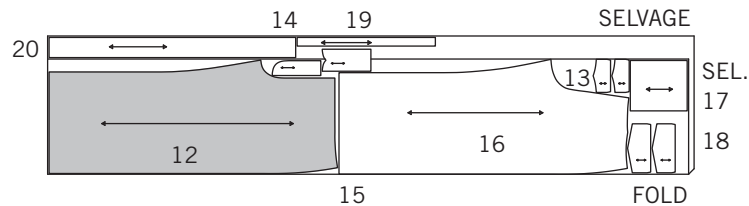


44" 45" (115CM)

WITH NAP

SIZES 10 12 14 16 18 20 22 24

CUT ONE OF PIECE 14

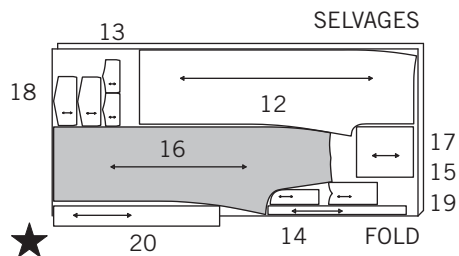


58" 60" (150CM)

WITH NAP

SIZES 6 8

CUT ONE OF PIECES 14 15 19

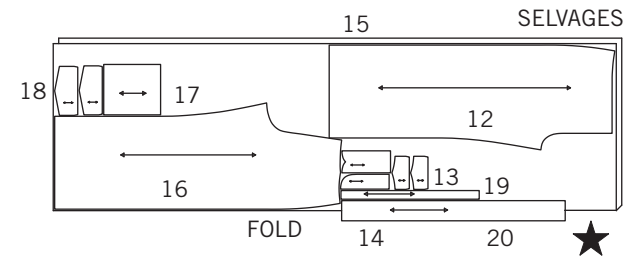


58" 60" (150CM)

WITH NAP

SIZES 10 12 14 16 18 20

CUT ONE OF PIECES 14 15 19

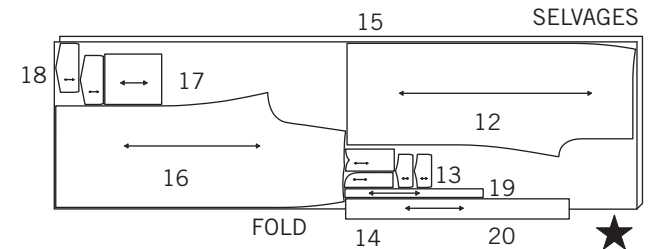


58" 60" (150CM)

WITH NAP

SIZES 22 24

CUT ONE OF PIECES 14 15 19

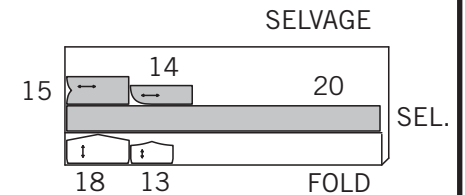


INTERFACING

USE PIECES 13 14 15 18 20

20" TO 25" (51CM TO 964CM) FUSIBLE

ALL SIZES



Sewing Directions

FABRIC KEY



Read **General Directions** on page 4 before you begin.

GLOSSARY OF SEWING METHODS

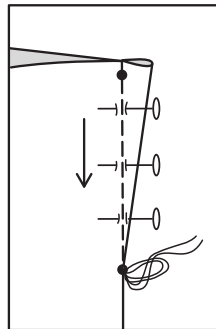
Sewing methods shown in *ITALICS* are defined below:

DART- To make dart, with **RIGHT** sides together, fold the fabric through the center of the dart, bringing broken lines and small dots together. On **INSIDE**, place pins at **RIGHT** angles to the broken lines. Stitch the dart from wide end to point.

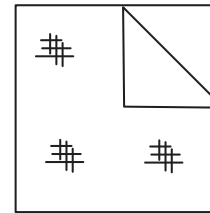
TIP- To prevent a “bubble” at the point, make the last few stitches right on the fold and leave the thread ends long enough to tie a knot. **DO NOT** back-stitch at the point.

Press the dart flat along the stitching to “blend” the stitches, then press dart as indicated in the Sewing Directions.

DART

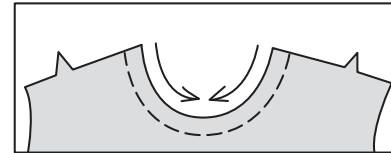


INTERFACING



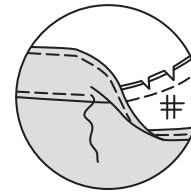
INTERFACING- Pin interfacing to **WRONG** side of fabric. Fuse interfacing in place following manufacturer’s directions.

STAY-STITCH



STAY-STITCH- Stitch 1/4” (6mm) for 3/8” (1cm) seams, OR 1/2” (1.3cm) for 5/8” (1.5cm) seams from cut edge in direction of arrows. This stitching stays in permanently to prevent stretching on curved edges. (Shown only in the first illustration.)

UNDERSTITCH



UNDERSTITCH- Press facing and seam away from garment, stitching through facing and seam allowances close to seam.

PATTERN PIECES WILL BE IDENTIFIED BY NUMBERS THE FIRST TIME THEY ARE USED.

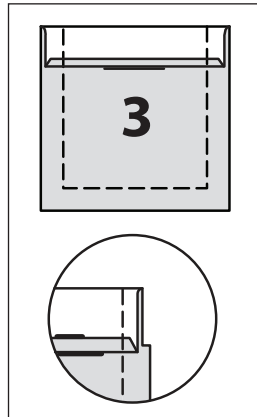
STITCH SEAMS WITH RIGHT SIDES TOGETHER UNLESS OTHERWISE STATED.

SHIRT A



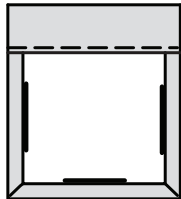
1. *STAY-STITCH* 1/4” (6mm) from neck edges of right front (1) and left front (2).

2



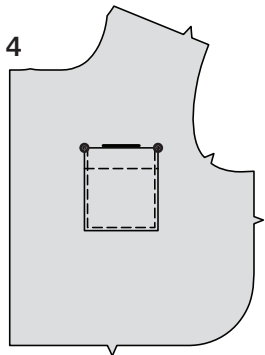
2. Press under 1/4" (6mm) on upper edge of pocket (3). Turn upper edge to OUTSIDE along fold line, forming facing. Stitch along seam line on raw edges. Trim seam allowance in the facing area to 1/4" (6mm).

3



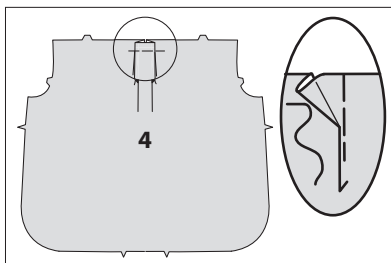
3. Turn corners RIGHT side out, turning facing to the WRONG side; press, pressing under raw edges along stitching. Stitch facing close to inner edge.

4

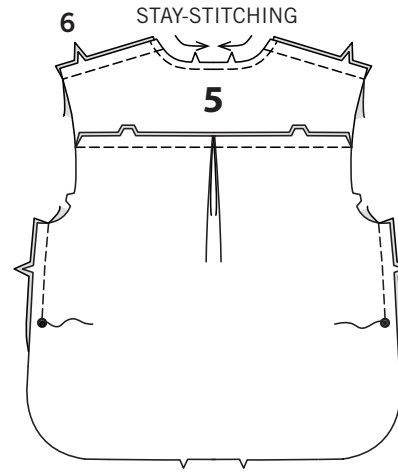


4. On OUTSIDE, pin pocket to left front, placing upper corners at large dots. Stitch close to side and lower edges.

5

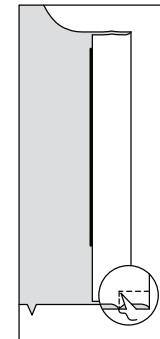


5. To make pleats in back (4), on OUTSIDE, fold along solid lines. Bring folds to broken lines; pin. Baste across raw edge.



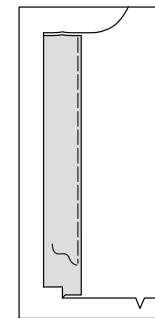
6. **STAY-STITCH** 1/4" (6mm) from neck edge of yoke back (5). With RIGHT sides together, stitch yoke back to upper edge of back, matching centers. Press seam toward yoke back. Stitch front to back at shoulder seams. Stitch front to back at side seams above large dots; back-stitch at large dots to reinforce seams.

7



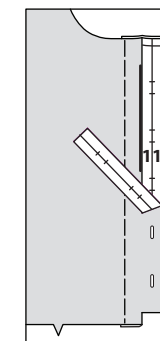
7. Prepare right front as follows: Turn right front edge to OUTSIDE along fold line for interfacing. Stitch from fold edge to stitching line, squaring stitching at stitching line and then to lower edge. Clip diagonally to stitching at inner corner, being careful not to cut through stitching. Trim seam.

8



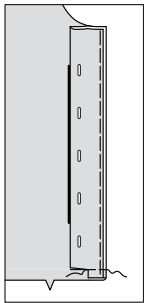
8. Turn front edge to INSIDE along fold line for interfacing; press. Baste close to inner raw edge.

9



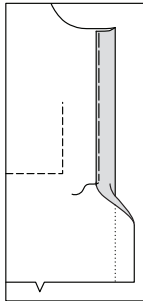
9. To mark buttonholes in right front, on OUTSIDE place buttonhole guide (11) along folded edge of shirt, having ends even with neck and lower edges. Make buttonholes at markings.

10



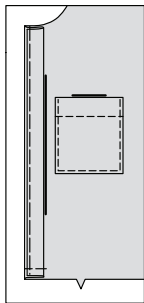
10. Turn right front edge to **OUTSIDE** along fold line for facing; press. Baste across lower edge.

11



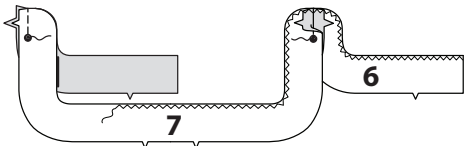
11. Prepare left front as follows: Turn front edge to **INSIDE** along fold line for interfacing; press. Baste close to inner raw edge.

12



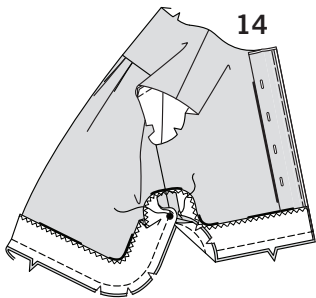
12. Turn front edge to **OUTSIDE** along fold line for facing; press. Baste across lower edge.

13



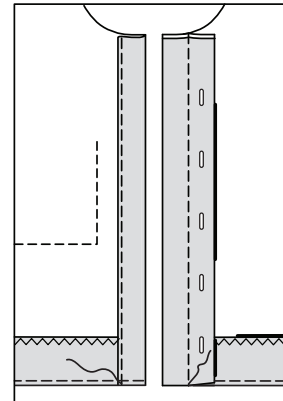
13. Stitch front facing (6) to back facing (7) at side seams above large dots; back-stitch at large dots to reinforce seams. Finish long unnotched edges with a zig-zag stitch or overlock/serge.

14



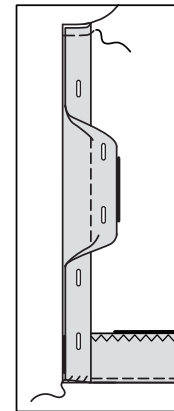
14. With **RIGHT** sides together, pin facing to lower edge of shirt, matching centers back, side seams and large dots, lapping front ends over placket facings, as shown. Stitch lower edge, breaking and reinforcing stitching at large dots and being careful not to catch in finished lower edge of **RIGHT** front. Trim seam; clip curves.

15



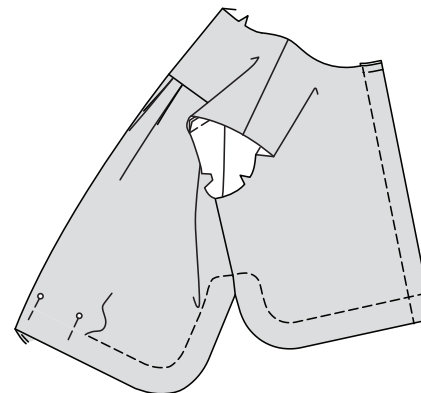
15. UNDERSTITCH facing. Turn facings to **INSIDE**, turning plackets along fold line for facing; press. Stitch right front along stitching lines. Stitch left front close to inner pressed edge of facing. Remove bastings along the long edges.

16



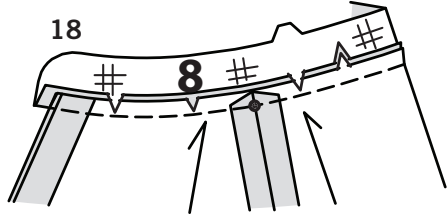
16. On **INSIDE**, turn inner free edge of right front facing toward front edge along stitching lines. Press. (Front edge of shirt extends 1/8" (3mm) beyond finished edge of facing.) Baste across neck edge. Slip-stitch lower edge of right front placket and facing together.

17

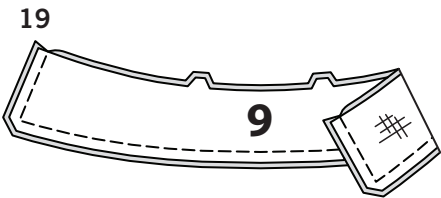


17. Pin facing in place, placing pins on **OUTSIDE**. On **OUTSIDE**, top-stitch shirt 1-1/2" (3.8cm) from lower edge.

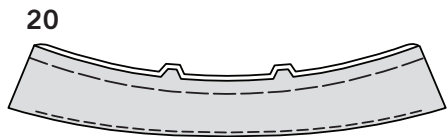
TIP- For even top-stitching, especially around the curved edges, using a see through ruler and a chalk or washable fabric pen, on **OUTSIDE**, mark a 1-1/2" line from finished lower edge.



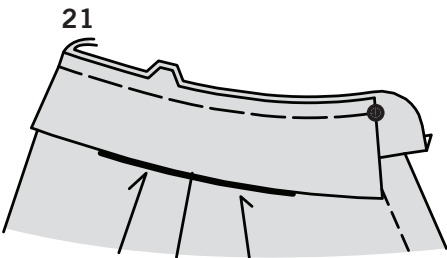
18. Apply **INTERFACING** to one neckband (8) section. Clip garment neck edge to stay-stitching. With **RIGHT** sides together, pin single notched edge of band to neck edge, matching centers back and placing small dots at shoulder seams. (Neckband extends 3/8" (1.5cm) beyond front opening edges.) Stitch neck edge in a 3/8" (1cm) seam. Trim seam; clip curves. Press band out; press seam toward band.



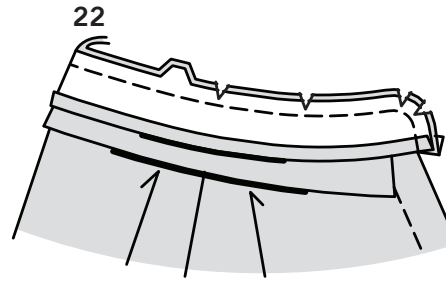
19. Apply **INTERFACING** to one collar (9) section. With **RIGHT** sides together and raw edges even, stitch facing to collar, in a 3/8" (1cm) seam, leaving notched edges open. Trim seam and corners.



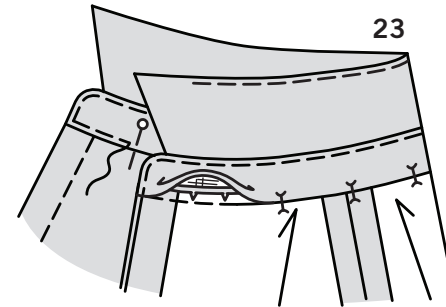
20. **UNDERSTITCH** facing as far as possible. Turn collar; press. Machine-baste raw edges together.



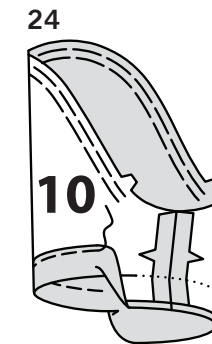
21. With **RIGHT** sides together and raw edges even, pin collar (facing side) to neckband, matching centers back and double notches and placing ends at large dots. Machine-baste.



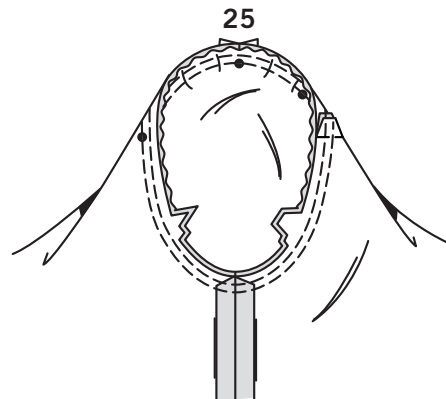
22. Press under 3/8" (1cm) on single notched edge of neckband facing. With **RIGHT** sides together, pin neckband facing to neckband (over collar), matching centers back. Stitch front and double notched edge in a 3/8" (1cm) seam. Trim seam; clip curves.



23. Turn band facing to **INSIDE**; press. Pin pressed edge of facing over seam, placing pins on **OUTSIDE**. On **OUTSIDE**, stitch close to all edges of neckband, catching in pressed edge of facing on **INSIDE**.



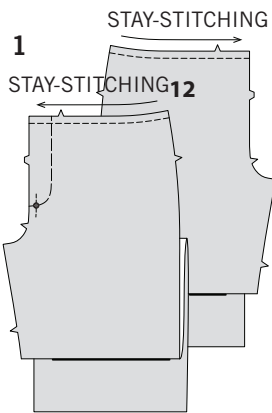
24. To ease top of sleeve (10) between notches, stitch along seam line and 1/4" (6mm) **INSIDE** seam line, using a long machine-stitch. Stitch underarm seam. Press up hem. Press under 1/4" (6mm) on raw edge. Stitch close to inner pressed edge.



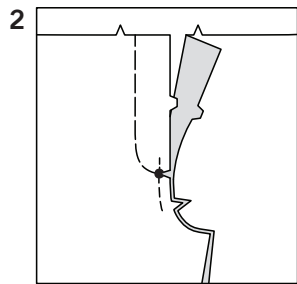
25. Turn sleeve **RIGHT** side out. Hold garment **WRONG** side out with armhole toward you. With **RIGHT** sides together, pin sleeve to armhole edge with center small dot at shoulder seam, matching underarm seams, notches and remaining small dots. Pull up ease stitches to fit. Baste. Stitch. Stitch again 1/8" (3mm) from first stitching. Trim seam below notches close to stitching. Press only the seam allowance, shrinking out fullness.



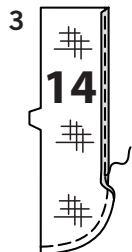
- 26.** Make buttonhole in RIGHT front neckband at marking. Lap RIGHT front over LEFT, matching centers. Sew buttons under buttonholes and in neckband at small dot.



- 1.** **STAY-STITCH** 1/2" (1.3cm) from upper edge of front (12) sections. Transfer stitching line on LEFT front to OUTSIDE with hand-basting OR a water soluble fabric marking pen. This will serve as a guide for the fly stitching later on. To reinforce LEFT front, stitch along seam line for about 1" (2.5cm) each side of large dot, stitching through large dot.

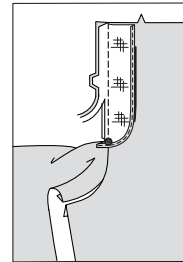


- 2.** With RIGHT sides together, pin front sections together, matching large dots. Stitch center front seam between notch and large dot. Back-stitch at dot to reinforce seam. Clip LEFT front to reinforced large dot, being careful not to clip through stitching.



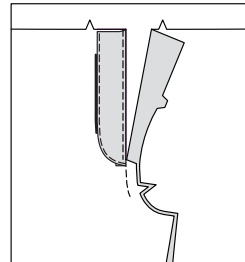
- 3.** Apply **INTERFACING** to fly (14). To finish unnotched edge of fly, stitch 1/4" (6mm) from edge, turn under along stitching and stitch OR zig-zag over the edge OR overlock/serge over the edge.

4



- 4.** With RIGHT sides together, pin fly to LEFT front edge, matching large dots, having raw edges even. Stitch above large dot; back-stitch at large dot to reinforce seam. Trim seam above large dot to 1/4" (6mm).

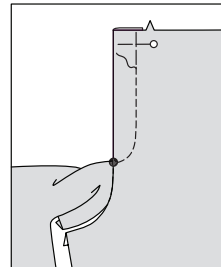
5



- 5.** **UNDERSTITCH** fly. Turn fly to INSIDE; press.

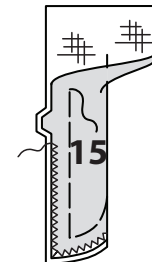
- 6.** Pin fly in place, placing pins on OUTSIDE. On OUTSIDE, top-stitch LEFT front along basting. Remove basting.

6



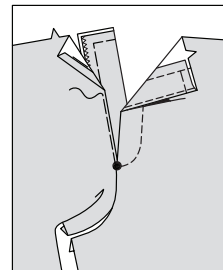
- 7.** Apply **INTERFACING** to underlap (15). Fold underlap in half, lengthwise, with WRONG sides together, having raw edges even. Machine-baste raw edges. Press. Finish notched and lower edges with a zig-zag stitch or overlock/serge.

7

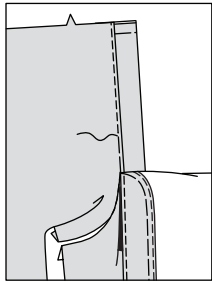


- 8.** Press under 3/8" (1cm) on RIGHT front above large dot. Pin RIGHT front edge over notched edge of underlap, matching large dots and placing pressed edge 1/8" (3mm) over seam line, having upper edges even. Baste through all thicknesses from upper edge to large dot. Lap LEFT front over RIGHT, matching centers. The LEFT front laps 1/4" (6mm) over RIGHT front and large dots at lower end of opening should match. Make sure fronts are aligned and fly and underlap lay smoothly in place.

8

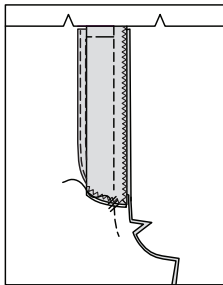


9



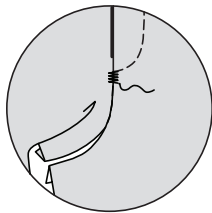
9. Open out LEFT front. Stitch RIGHT front in place as basted.

10



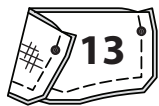
10. Lap fronts again. On INSIDE, hand-tack fly and underlap together close to lower edge, as shown.

11



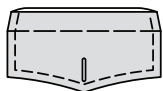
11. On OUTSIDE, make a machine bar tack at lower end of fly stitching, stitching through all thicknesses including underlap.

12



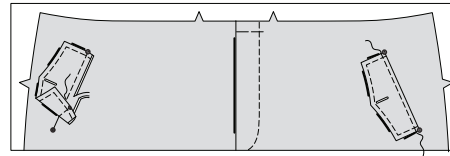
12. Apply **INTERFACING** to flap (13) sections. With RIGHT sides together, stitch facing to flap in a 3/8" (1cm) seam, leaving edge with small dots open. Trim seam and corners.

13



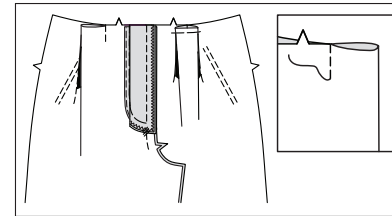
13. Turn flap; press. Machine-baste 5/8" (1.5cm) from raw edge. On OUTSIDE, top-stitch 1/4" (6mm) finished edge. Make buttonhole at marking.

14

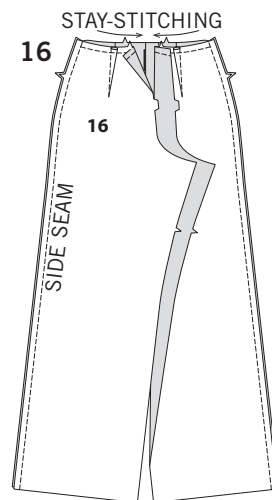


14. On OUTSIDE, pin flap to front, placing basting along slanted flap line, matching small dots, as shown. Stitch along basting. Trim close to stitching. Turn flap down; press. Top-stitch 1/4" (6mm) from upper edge.

15

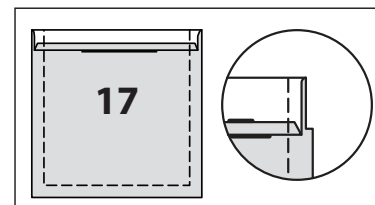


15. To make pleats in front, on INSIDE, bring broken lines together. Stitch along broken lines. Press pleat flat, bringing stitching to center. Baste across upper edge.



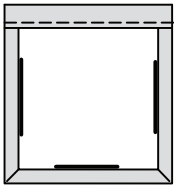
16. **STAY-STITCH** upper edge of back (16). Make **DARTS** in back; press toward center. Stitch front to back at side seams.

17



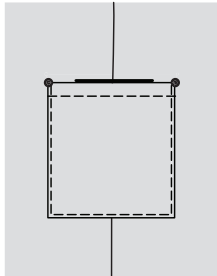
17. Press under 1/4" (6mm) on upper edge of side pocket (17). Turn upper edge to OUTSIDE along fold line, forming facing. Stitch along seam line on raw edges. Trim seam allowance in the facing area to 1/4" (6mm).

18



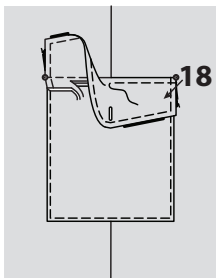
18. Turn corners RIGHT side out, turning facing to the WRONG side; press, pressing under raw edges along stitching. Stitch facing close to inner edge.

19



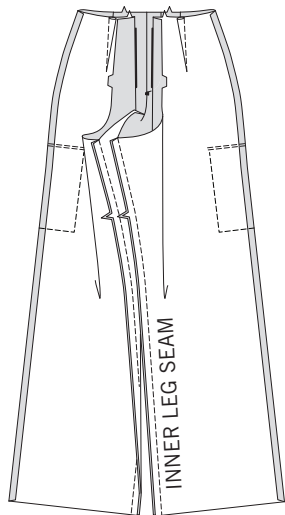
19. On OUTSIDE, pin pocket to front and back, placing upper corners at large dots. Stitch close to side and lower edges.

20



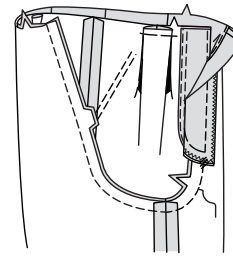
20. Prepare side flaps (18) same as for flap. On OUTSIDE, pin side flap to front and back, placing basting along side flap line, matching small dots, as shown. Stitch along basting. Trim close to stitching. Turn flap down; press. Top-stitch 1/4" (6mm) from upper edge.

21



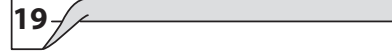
21. Stitch front to back at inner leg seam.

22



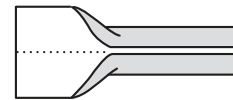
22. With RIGHT sides together, insert one pant leg INSIDE the other. With RIGHT sides together, pin center seam, matching inner leg seams and notches. Stitch, connecting to previous stitching. To reinforce seam, stitch again over first stitching.

23



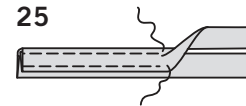
23. Fold carrier (19) in half, lengthwise with WRONG sides together. Press, setting in a crease.

24



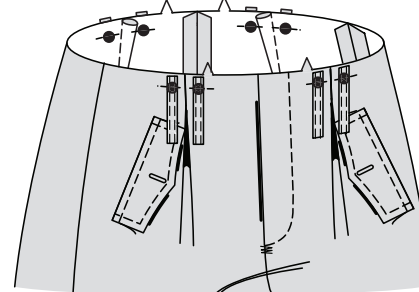
24. Open out long edges of carrier and turn them to WRONG side so that they meet at the crease. Press.

25



25. Fold carrier in half lengthwise, bringing pressed edges together. Stitch close to both long edges.

26



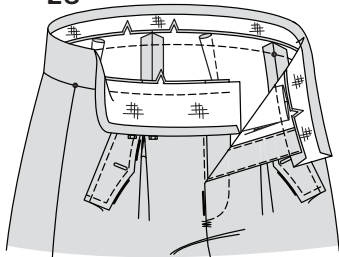
26. Cut eight carriers each 3" (7.5cm) long. On OUTSIDE, pin carriers to pants over large dots, having raw edges even. Baste across ends of carriers.

27



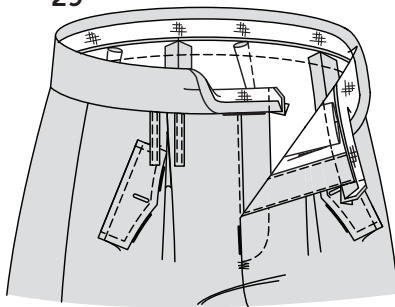
27. Apply **INTERFACING** to waistband (20). Press under 1/2" (1.3cm) on long unnotched edge of waistband.

28



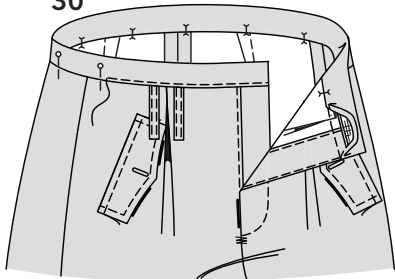
28. With **RIGHT** sides together, pin garment to band, matching centers, placing side seams at small dots. Stitch. Trim seam; press toward band.

29



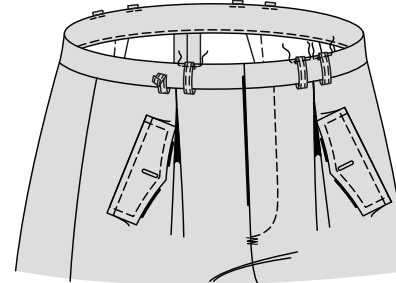
29. Fold band with **RIGHT** sides together. Stitch ends. Trim seams and corners.

30



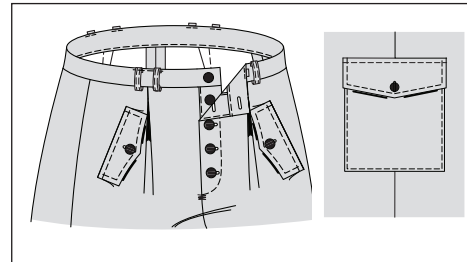
30. Turn band; press. Pin pressed edge of band 1/8" (3mm) over seam, placing pins on **OUTSIDE**. On **OUTSIDE**, stitch in the ditch or groove of band seam, catching in pressed edge of band on **INSIDE**.

31



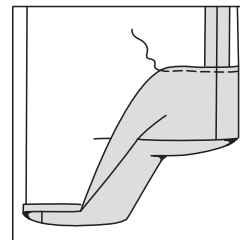
31. Press carriers up, pressing under 3/8" (1cm) on remaining ends. Pin pressed ends of carriers to upper edge of waistband. Stitch across carriers close to pressed ends.

32



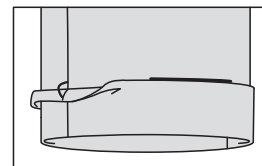
32. Make buttonholes in **LEFT** front and waistband at markings. Lap **LEFT** front over **RIGHT**, matching centers. Sew buttons under buttonholes. Sew buttons to pants front and pockets under buttonholes in flaps.

33



33. Press up leg edge along fold line for cuff. Press under 1/4" (6mm) on raw edge. Stitch in place.

34



34. Press leg edge to **OUTSIDE** 3" (7.5cm), forming cuff. French tack cuff to pants at seams. **OR**, stitch in the ditch or groove of each seam through all thicknesses of cuff.



Congrats!


You've completed your sewing adventure!

**SHARE
YOUR** look!



Post your pattern and tag us at
@simplicity_creative_group and use #simplicitypatterns
for a chance to be featured on our social media!

Look for more Simplicity PDF patterns at **Simplicity.com**

 1-888-588-2700

© 2023 IG Design Group Americas, Inc. | All Rights Reserved
Sold for individual home use only and not for commercial or manufacturing purposes.