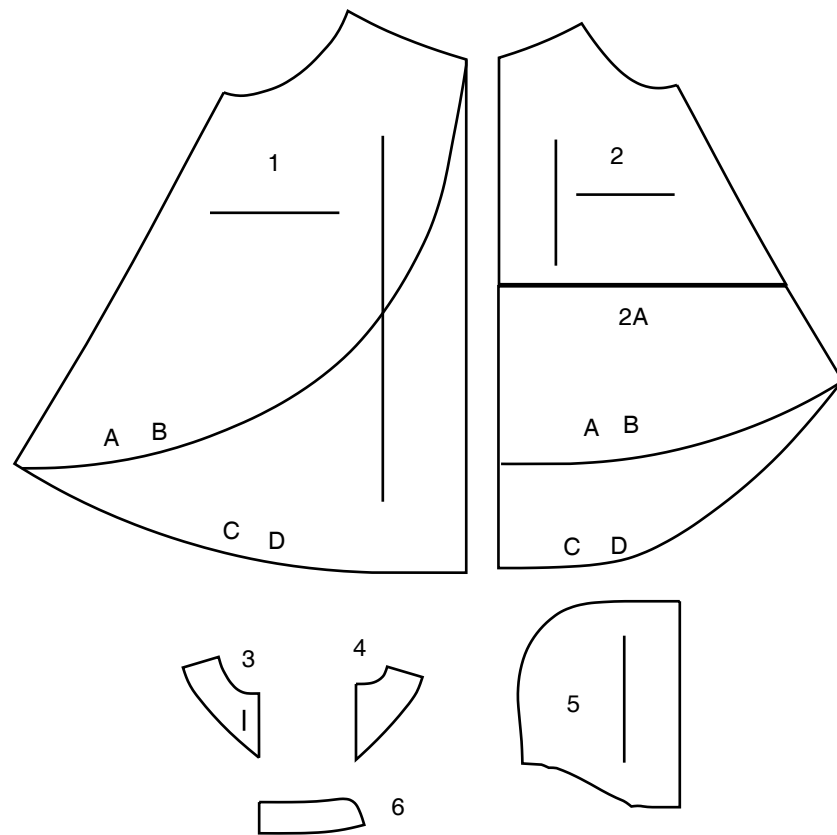
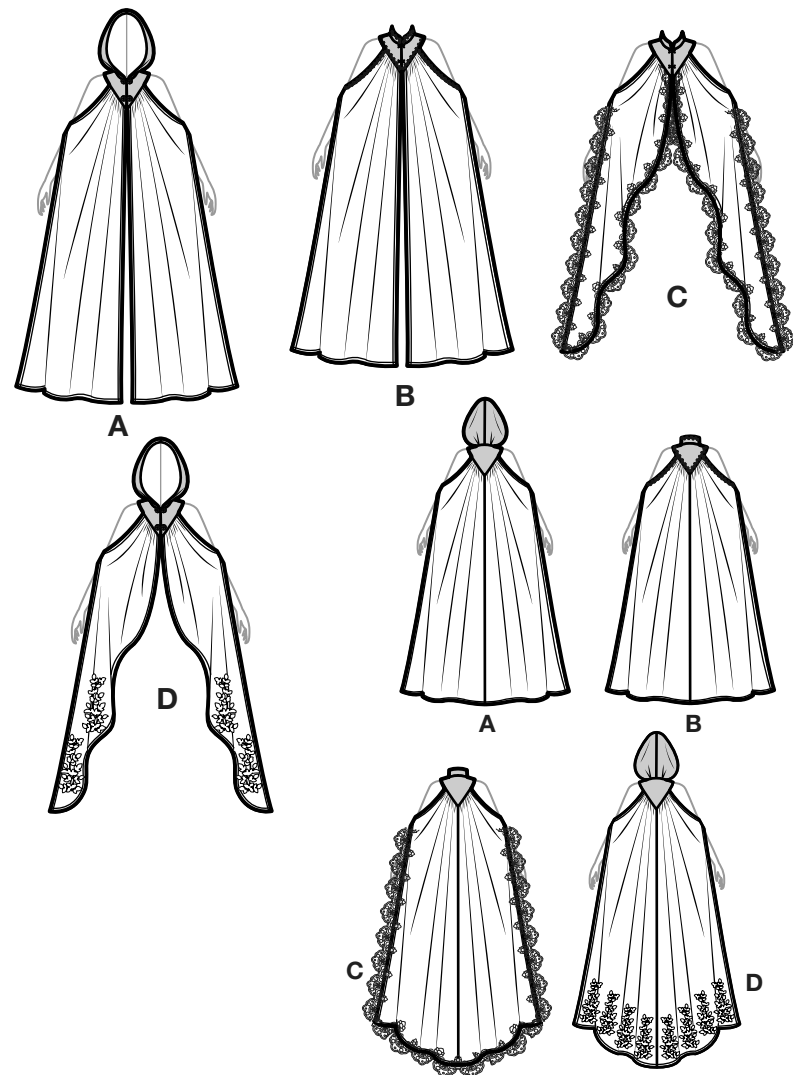


Simplicity®

Thank you for purchasing this Simplicity pattern. We made every effort to provide you with a high quality product.



- 1 FRONT - A,B,C,D
- 2(2A) BACK - A,B,C,D
- 3 YOKE FRONT - A,B,C,D
- 4 YOKE BACK - A,B,C,D
- 5 HOOD - A,D
- 6 COLLAR - B,C

General Directions

The Pattern

SYMBOLS

- GRAIN LINE Place on straight grain of fabric parallel to selvage
- PLACE SOLID LINE on fold of fabric.
- CENTER FRONT OR BACK of garment.
- NOTCHES
- DOTS
- CUTTING LINE
- LENGTHEN OR SHORTEN LINES

SEAM ALLOWANCE: 5/8" (1.5cm) unless otherwise stated is included but not printed on MULTI-SIZE PATTERNS. Mark your size with colored felt tip pen. See chart on tissue for how to use MULTI-SIZE PATTERNS.

Adjust If Needed

ADJUST IF NEEDED
Make adjustments before placing pattern on fabric.

TO LENGTHEN:
Cut pattern between lengthen or shorten lines. Spread pattern evenly, the amount needed and tape to paper.

TO SHORTEN:
At lengthen or shorten lines, make an even pleat taking up amount needed. Tape in place.

When lengthen or shorten lines are not given, make adjustments at lower edge of pattern.

Cutting/Marking

BEFORE CUTTING:
PRESS pattern pieces with a warm dry iron. PRE-SHRINK fabric by pre-washing washables or steam-pressing non-washables.
CIRCLE your cutting layout.

AFTER CUTTING:
Transfer markings to WRONG side of fabric before removing pattern. Use pin and chalk method or dressmaker's tracing paper and wheel.

To Quick Mark:

- Snip edge of fabric to mark notches, ends of fold lines and center lines.
- Pin mark dots.

SPECIAL CUTTING NOTES

- ★ If layout shows a piece extending past fold, cut out all pieces except piece that extends.
- ✱ Mark small arrows along both selvages indicating direction of nap or design. Fold fabric crosswise with RIGHT sides together, and cut along fold (a).

a.

b.

Turn one fabric layer around so arrows on both layers go in the same direction. Place RIGHT sides together (b).

Sewing

- SEW garment following **Sewing Directions**.
- PIN or machine-baste seams matching notches.
- STITCH 5/8" (1.5 cm) seams unless otherwise stated.
- PRESS seams open unless otherwise indicated clipping when necessary so seams will lie flat.
- TRIM seams to reduce bulk, as shown below.

Trim enclosed seams into layers

Trim corners

Clip inner curves

Notch outer curves

Cutting Layouts

WRONG SIDE OF FABRIC

RIGHT SIDE OF FABRIC

PATTERN PIECE WITH PRINTED SIDE UP

PATTERN PIECE WITH PRINTED SIDE DOWN

SEE SPECIAL CUTTING NOTES

POSITION OF PATTERN PIECES MAY VARY SLIGHTLY ACCORDING TO YOUR PATTERN SIZE

CAPE A (CUT CROSSWISE)

NOTE: BEFORE CUTTING FABRIC, JOIN PIECES IN PARENTHESIS TO CORRESPONDING PIECES FOLLOWING INSTRUCTIONS ON TISSUE PATTERN.

USE PIECES 1 2 (2A)

60" (150CM) WITH NAP ALL SIZES

CONTRAST A,D (YOKE FRONT AND BACK, HOOD)

USE PIECES 3 4 5

45" (115CM) WITH NAP ALL SIZES

60" (150CM) WITH NAP ALL SIZES

INTERFACING A,D

USE PIECES 3 4

20" (51CM) ALL SIZES

CAPE B

NOTE: BEFORE CUTTING FABRIC, JOIN PIECES IN PARENTHESIS TO CORRESPONDING PIECES FOLLOWING INSTRUCTIONS ON TISSUE PATTERN.

USE PIECES 1 2 (2A)

60" (150CM) WITH NAP ALL SIZES

CONTRAST B,C (YOKE FRONT AND BACK, COLLAR)

USE PIECES 3 4 6

45" (115CM) WITH NAP ALL SIZES

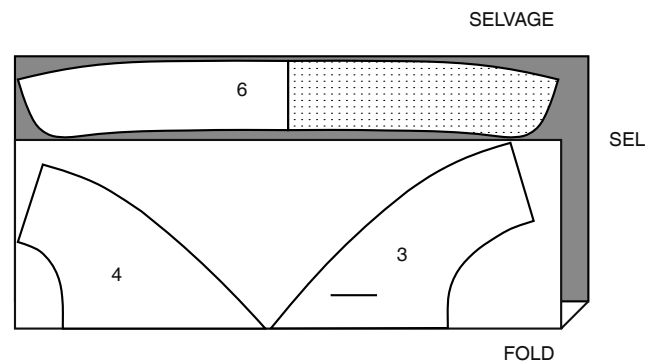
S3161

2 of 4

INTERFACING B,C

USE PIECES 3 4 6

20" (51CM)
ALL SIZES

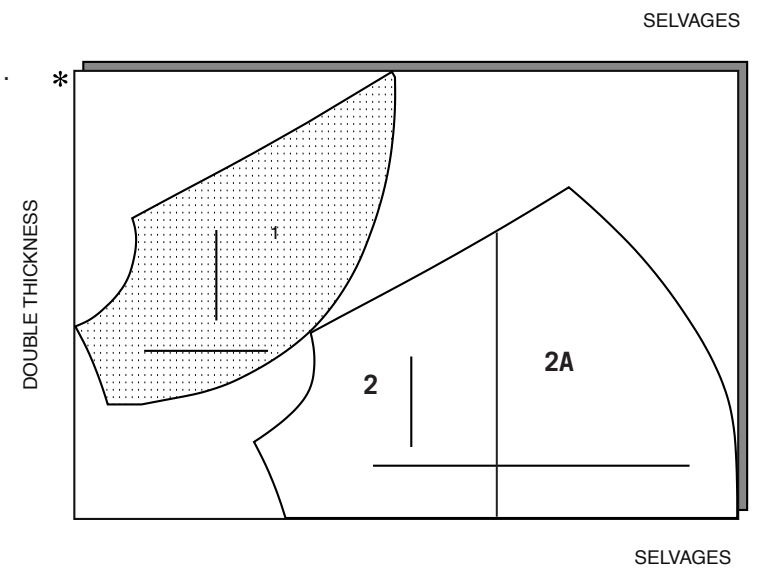


CAPE C, D

NOTE: BEFORE CUTTING FABRIC, JOIN PIECES IN PARENTHESIS TO CORRESPONDING PIECES FOLLOWING INSTRUCTIONS ON TISSUE PATTERN.

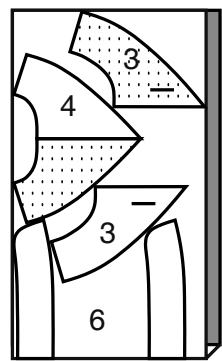
USE PIECES 1 2 (2A)

60" (150CM)
WITH NAP
ALL SIZES



60" (150CM)
WITH NAP
ALL SIZES

SELVAGES



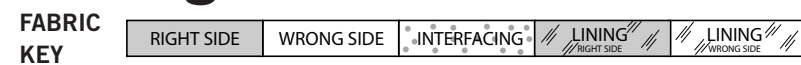
FOLD

SEWING TUTORIALS



Build your skills viewing short, easy-to-follow videos at simplicity.com/sewingtutorials

Sewing Directions



Sewing methods in **BOLD TYPE** have Sewing Tutorial Video available. Scan QR CODE to watch videos:

- GATHER** – See **Gathering**: “sewing two row gathers” video.
- FRENCH SEAM** – See **Seams**: “how to sew french seams” video.
- NARROW HEM** – See “how to **Narrow hem**” video.
- SLIPSTITCH** – See **Hand Stitching**: “how to slip stitch” video.
- STITCH IN THE DITCH** – See **Machine Stitches**: “how to stitch in the ditch” video.
- TRIM SEAM** – See **Seams**: “how to trim, clip and layer seams” video.
- UNDERSTITCH** – See **Machine Stitches**: “how to understitch” video.

PATTERN PIECES WILL BE IDENTIFIED BY NUMBERS THE FIRST TIME THEY ARE USED.

STITCH 5/8" (1.5CM) SEAMS WITH RIGHT SIDES TOGETHER UNLESS OTHERWISE STATED.

CAPE A, B, C, D

INTERFACING

- 1.** Pin interfacing to **WRONG** side of YOKE FRONT (3) and YOKE BACK (4), and additionally to COLLAR (6) for Views B and C. Fuse interfacing in place following manufacturer's directions.

FRONT AND BACK

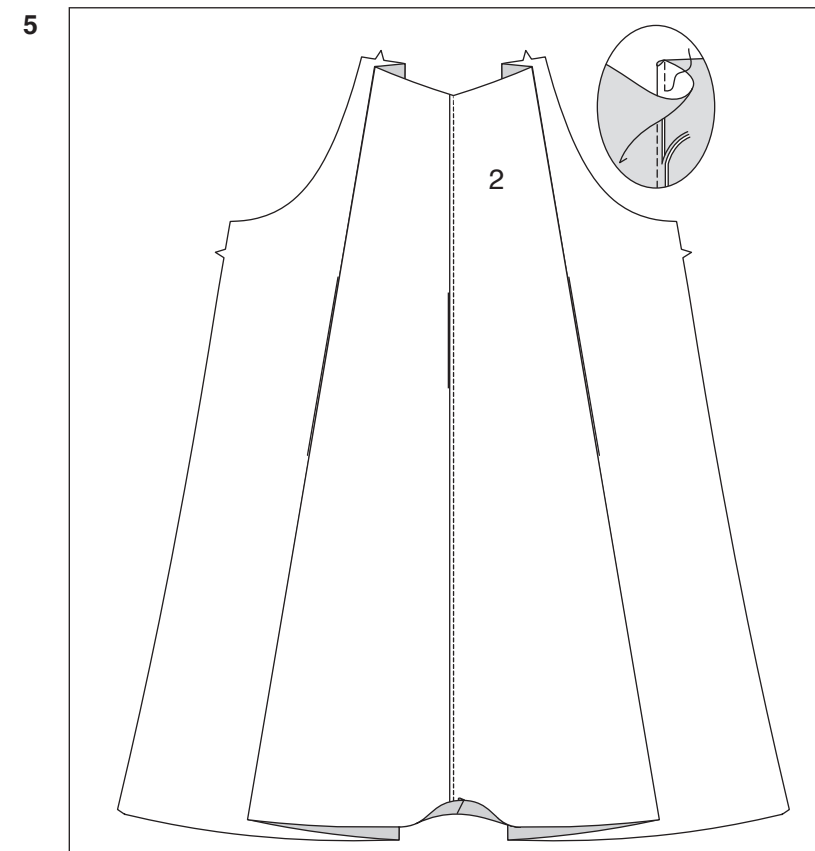
- 2. FOR VIEW A, B** – To reinforce side edge of FRONT (1) at lower large dot, stitch along seam line for about 1" (2.5cm) each side of large dot, stitching through dot, as shown. Clip to stitching at dot.



- 3. FOR VIEW C, D** – To reinforce side edge of FRONT (1) at lower large dot, stitch along seam line for about 1" (2.5cm) each side of large dot, stitching through dot, as shown. Clip to stitching at dot.

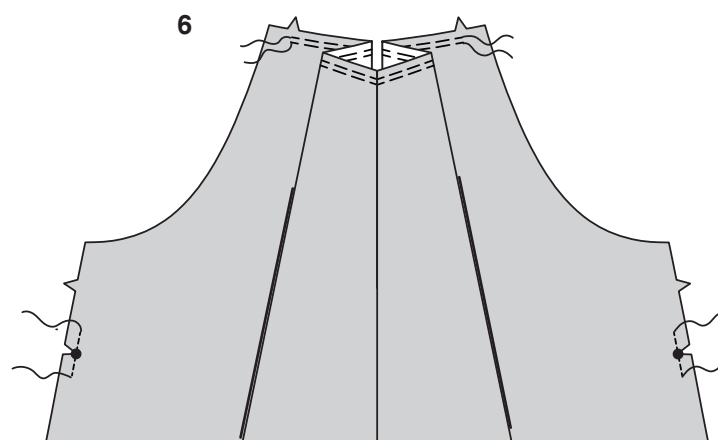
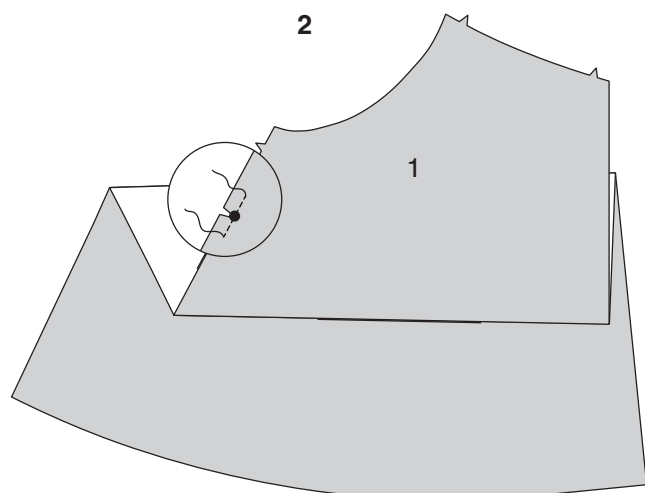
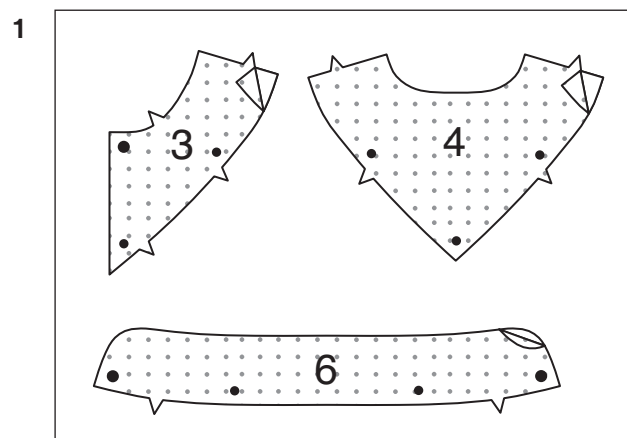
NOTE: View A will be shown in the following illustrations unless otherwise noted.

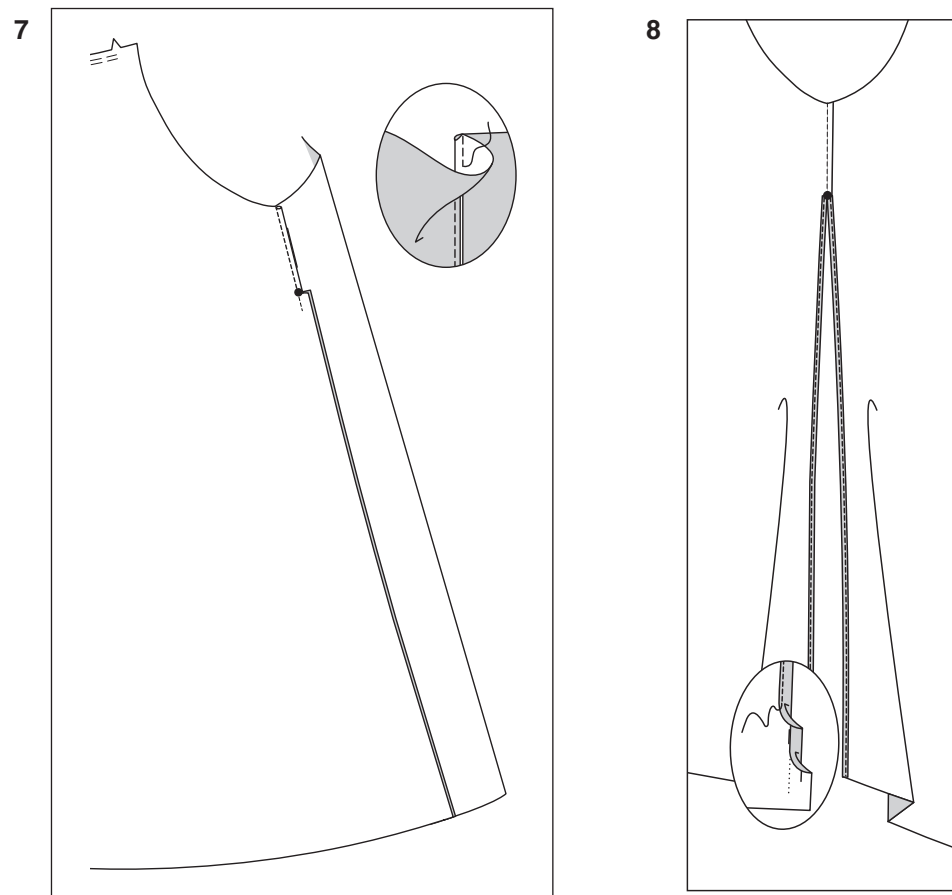
- 4.** To **GATHER** upper edge of front between the notches, loosen needle tension slightly. On **OUTSIDE**, stitch 5/8" (1.5cm) from cut edge using a long stitch. Stitch again 1/4" (6mm) from first stitching within the seam allowance.



- 5.** Pin center back edges of BACK (2) with **WRONG** sides together, matching notches. Stitch in a **FRENCH SEAM**. To make a French seam, stitch first seam with **WRONG** sides together, 3/8" (1cm) from seam line. Trim seam allowance to 1/8" (3mm). Fold fabric right sides together along stitching. Press. Stitch 1/4" (6mm) from the fold, encasing first seam. Press seam flat and then towards one side.

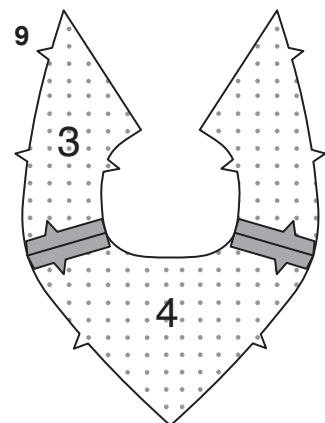
- 6. GATHER** upper edge of back between the notches. Reinforce and clip side edge of back in the same manner as front.





7. With **WRONG** sides together, pin front to back at side edges, matching notches. Stitch in a **FRENCH SEAM** from underarm edge to lower large dot. Press seam flat and then towards back.

8. Press under 5/8" (1.5cm) on side edges below large dot. To form **NARROW HEM**, tuck under raw edge to meet crease. Press. Stitch hem in place, squaring stitching at large dot. **NARROW HEM** front, lower, armhole edges of cape in the same manner.



YOKE AND HOOD A, D

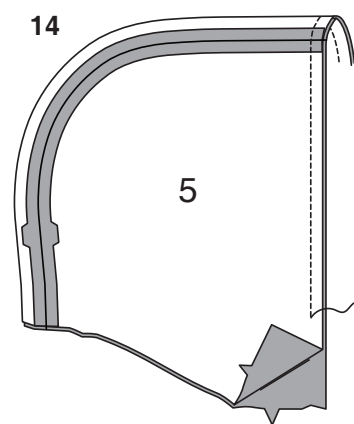
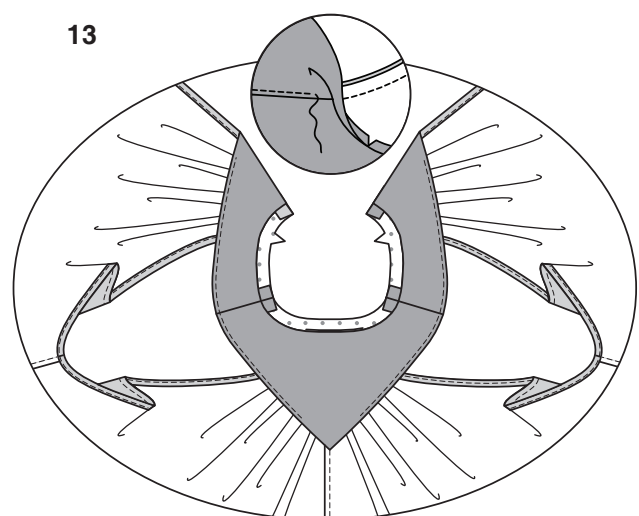
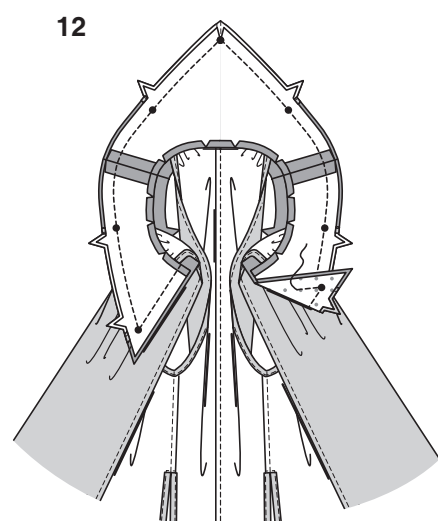
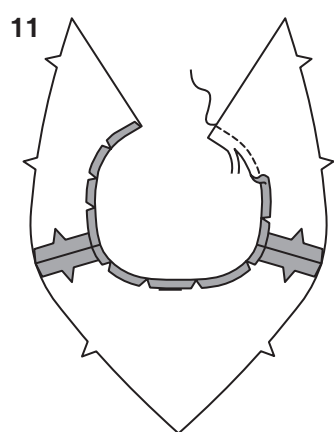
9. Stitch **YOKE FRONT** (3) to **YOKE BACK** (4) at shoulder edges.

10. With **RIGHT** sides together and raw edges even, pin upper edges of front and back to lower edges of yoke, matching small dots and notches, pulling up gathering stitches to fit. Baste.

11. Stitch **YOKE FRONT** (3) to **YOKE BACK** (4) facing at shoulder edges. Machine-stitch along seamline of neck edge. Trim seam allowance to 3/8" (1cm). Press under neck edge along stitching, clipping to stitching as necessary.

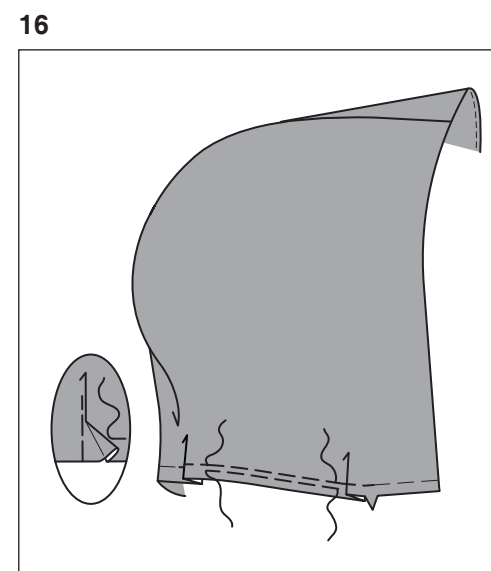
12. With **RIGHT** sides together and raw edges even, pin yoke facing to yoke (over **WRONG** side of front and back), matching small dots and notches. Stitch lower and front edges. **TRIM SEAM**.

13. **UNDERSTITCH** the facing as far as possible. Press yoke and facing away from front and back.

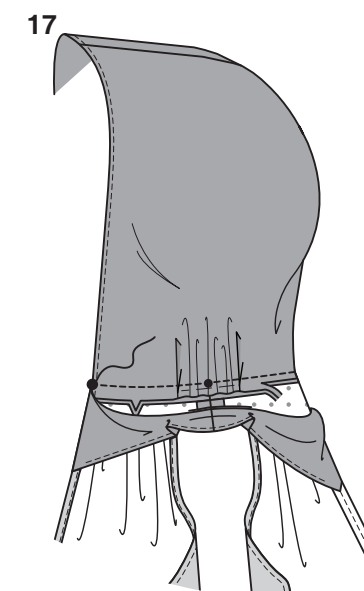


14. Stitch center back edges of **HOOD** (5) and hood facing. With **RIGHT** sides together and raw edges even, pin hood to facing along front edge. Stitch. **TRIM SEAM**.

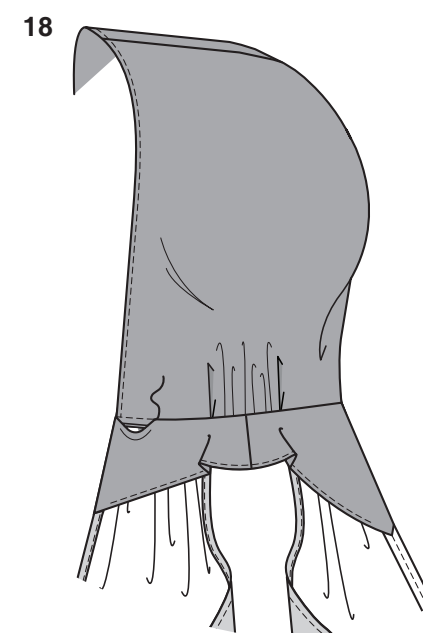
15. **UNDERSTITCH** hood facing. Turn facing to **INSIDE**; press. Baste raw edges together.



16. To make pleats, on **OUTSIDE**, fold along solid lines. Bring folds to broken lines; pin. Baste across raw edge. **GATHER** each side of hood between the pleats.

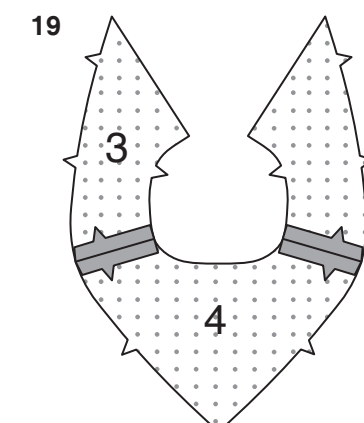


17. On **INSIDE**, pin pressed edge of yoke facing away from seamline of yoke. With **RIGHT** sides together and raw edges even, pin lower edge of hood to upper edge of yoke, matching notches and large dots, placing small dot at shoulder seam, pulling up gathering stitches to fit. Stitch. **TRIM SEAM**. Press seam toward yoke, pressing hood out.

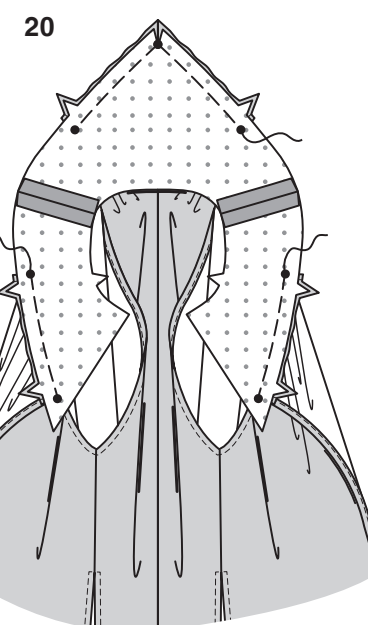


18. On **INSIDE**, pin pressed edge of facing over seam. **SLIPSTITCH** in place invisibly.

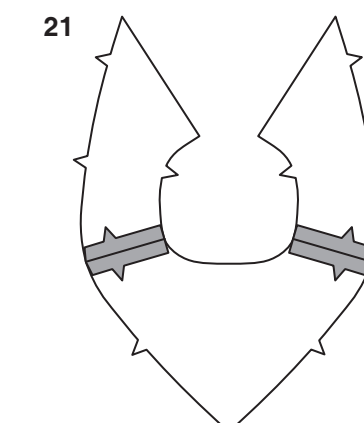
YOKE AND COLLAR B, C



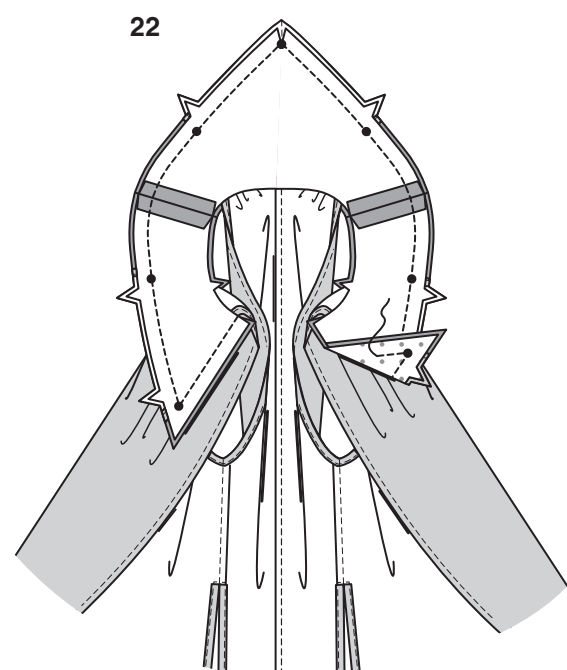
19. Stitch **YOKE FRONT** (3) to **YOKE BACK** (4) at shoulder edges.



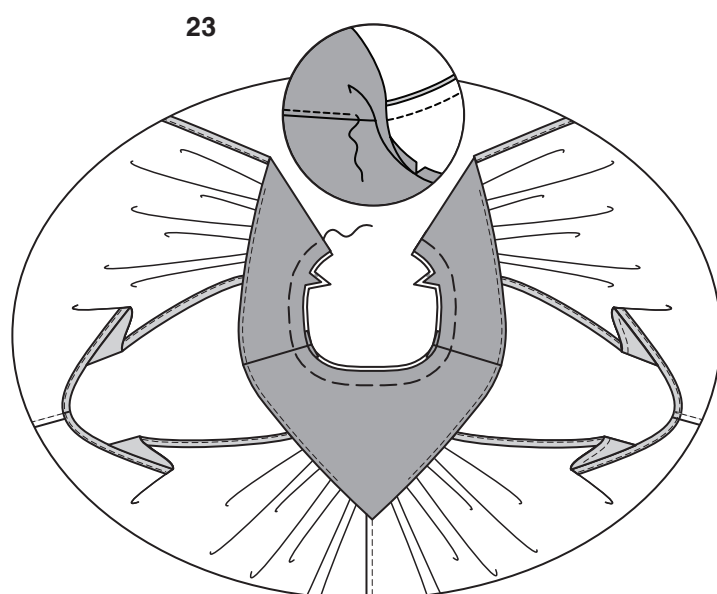
20. With **RIGHT** sides together and raw edges even, pin upper edges of front and back to lower edges of yoke, matching small dots and notches, pulling up gathering stitches to fit. Baste.



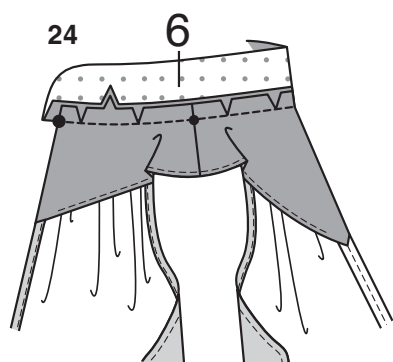
21. Stitch **YOKE FRONT** (3) to **YOKE BACK** (4) **FACING** at shoulder edges.



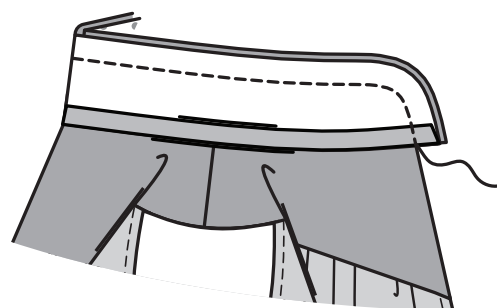
22. With RIGHT sides together and raw edges even, pin yoke facing to yoke (over WRONG side of front and back), matching small dots and notches. Stitch lower and front edges. **TRIM SEAM.**



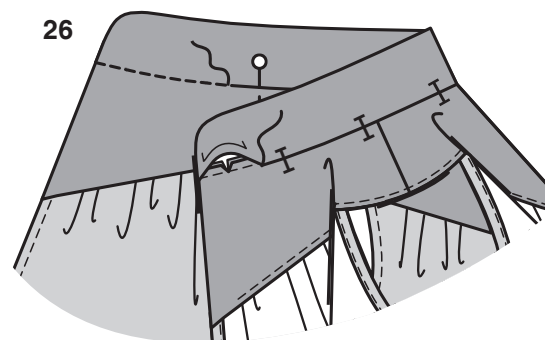
23. UNDERSTITCH the facing as far as possible. Press yoke and facing away from front and back. Baste raw edges together.



24. Clip neck edge of yoke to basting. With RIGHT sides together, pin collar to neck edge, matching centers back, large dots, and notches, placing small dots at shoulder seams. (End of collar extends 5/8" (1.5cm) beyond front edge of yoke.) Stitch in a 5/8" (1.5cm) seam. **TRIM SEAM.** Press collar out, pressing seam toward collar.

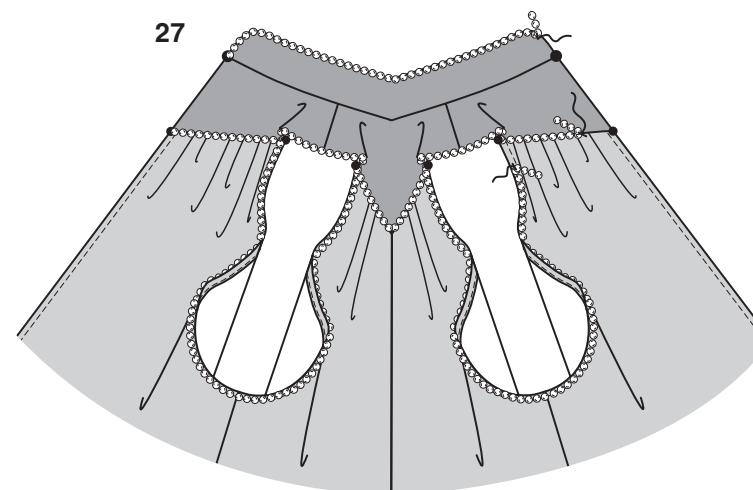


25. Press under a generous 1/2" (1.3cm) on notched edge of collar facing. With RIGHT sides together, pin collar facing to collar, matching centers back, having raw edges even. Stitch in 5/8" (1.5cm) seam. **TRIM SEAM.**



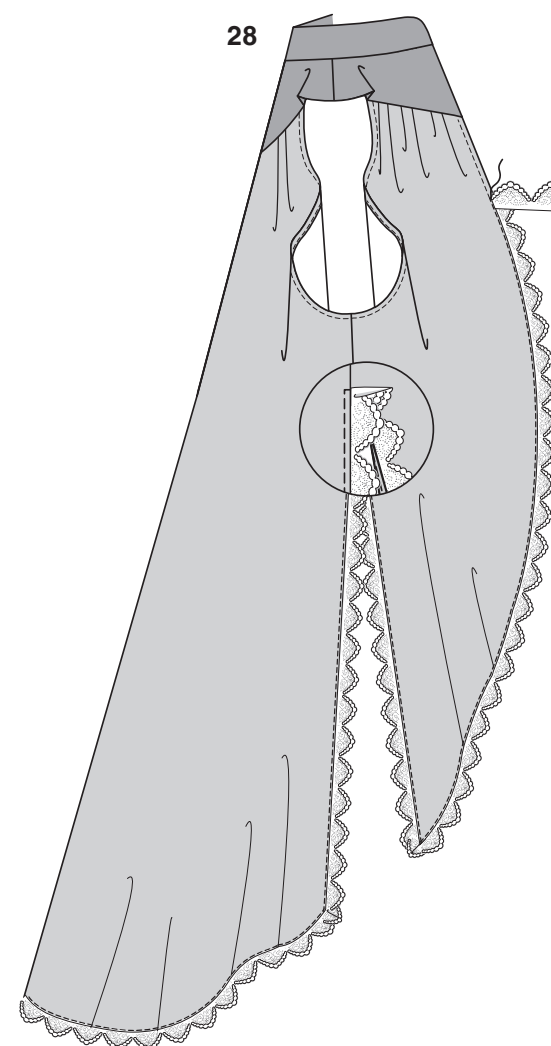
26. Turn collar facing to INSIDE; press. Pin pressed edge of facing over seam, placing pins on OUTSIDE. On OUTSIDE, **STITCH IN THE DITCH** of the seam, catching in pressed edge of facing on INSIDE. Remove pins as you come to them. OR if you prefer, on INSIDE, pin pressed edge of facing over seam and **SLIPSTITCH** in place.

TRIM B



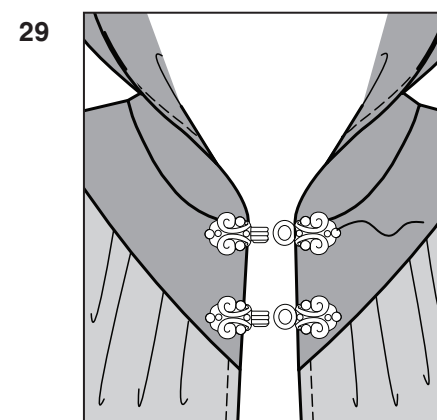
27. ON OUTSIDE, pin beaded or rhinestone trim to upper edge of collar between large dots, to lower edge of yoke between small dots, and to underarm edge between small dots. Hand-tack in place, invisibly.

TRIM C



28. On OUTSIDE, pin 1-1/4" (3.2cm) flexible lace trim lapping front, lower, and side slit edges of cape, having inner points of scallop along finished edges, folding in fullness at side slits, and turning under ends at lower edge of yoke. Machine-stitch or hand-stitch in place, invisibly.

FINISHING



29. FOR ALL VIEWS – Bring center front edges together. Pin two pairs of decorative hook and eye closures or decorative clasp closures to yoke, matching centers front. Hand-sew in place. **FOR VIEW D** – Hand-sew five pairs of appliques to front and back of cape, as shown on envelope, OR as you prefer.