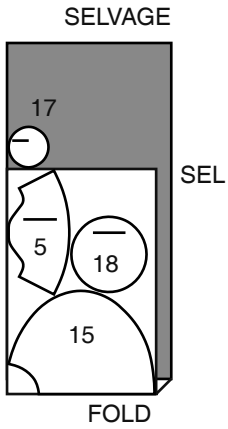


CONTRAST 2 C (SLEEVES, OVERLAY, HAT TOP, BRIM)

USE PIECES 5 15 17 18

45" (115CM)
WITH NAP



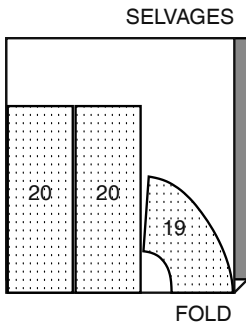
HAT INTERFACING C

CUT ONE EACH OF PIECES 16 17 18 FROM REMNANT.

DRESS D

USE PIECES 19 20

45" (115CM)
WITH NAP



CONTRAST 1 D (SLEEVES)
CUT TWO OF PIECE 5 FROM REMNANT.

CONTRAST 2 D (HAT)

CUT ONE EACH OF PIECES 17 AND 21, CUT TWO
OF PIECE 18, FROM REMNANT.

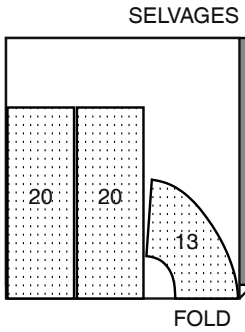
HAT INTERFACING D

CUT ONE EACH OF PIECES 17 18 21 FROM REMNANT.

DRESS E

USE PIECES 13 20

45" (115CM)
WITH NAP



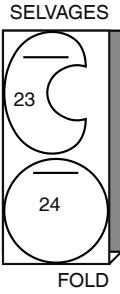
CONTRAST 1 E (SLEEVES, APRON)

CUT TWO OF PIECE 5 AND ONE OF PIECE 22 FROM REMNANT.

CONTRAST 2 E (SCARF, HAT)

USE PIECES 23 24

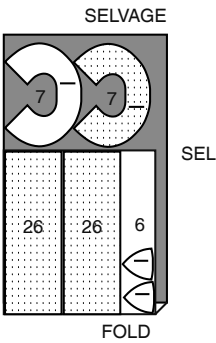
45" (115CM)
WITH NAP



BIKINI BOTTOM AND HAT F

USE PIECES 6 7 26

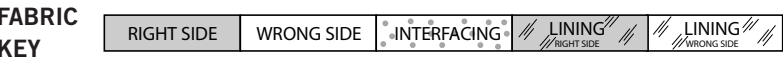
45" (115CM)
WITH NAP



CONTRAST F, PADDING F (TOP)

CUT TWO OF PIECE 25 FROM REMNANT.

Sewing Directions



Sewing methods in **BOLD TYPE** have Sewing Tutorial Video available. Scan QR CODE to watch videos:

- EDGE****STITCH** – See **Machine Stitches: “how to sew an edgestitch”** video.
- FINISH** – See **Seams: “how to finish seam allowances”** video.
- GATHER** – See **Gathering: “sewing two row gathers”** video.
- NARROW HEM** – See **Hems: “sewing narrow hems”** video.
- SLIPSTITCH** – See **Hand Stitching: “how to slip stitch”** video.
- TACK** – See **Hand Stitching: “how to tack”** video.
- TOPSTITCH** – See **Machine Stitches: “how to topstitch”** video.
- TRIM SEAM** – See **Seams: “how to trim, clip and layer seams”** video.

GENERAL DIRECTIONS FOR STUFFING

- STUFF** - Pull fiberfill apart and fluff it before you use it. Break apart the lumps and thick spots. This will help to create a smoother looking project. Use pieces about the size of a tennis ball. Pack into place using the end of a long handled wooden spoon or chop-stick. Use small pieces and pack into place using the end of a crochet hook or chop-stick. Pack firmly in place each time stuffing is added. Use both hands to mold and shape, being careful not to over stuff or make lopsided.

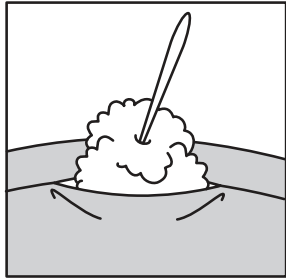
GENERAL DIRECTIONS FOR BIAS TAPE

- ENCASE**-You will notice that one edge is wider than the other. The wider side is to be used on the **INSIDE** so that when the binding is stitched in place from the **OUTSIDE**, both edges are sure to be caught in the stitching.
- CURVES**: If binding is applied to a curved surface, first, preshape it with a steam iron. For an inward curve, stretch the double edges and press; for an outward curve, stretch the fold edge and press.

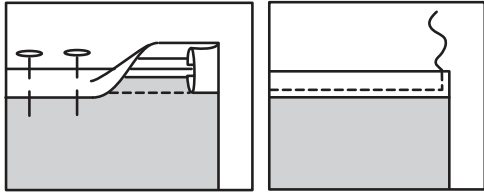
SEWING TUTORIALS



Build your skills viewing short, easy-to-follow videos at
simplicity.com/sewingtutorials



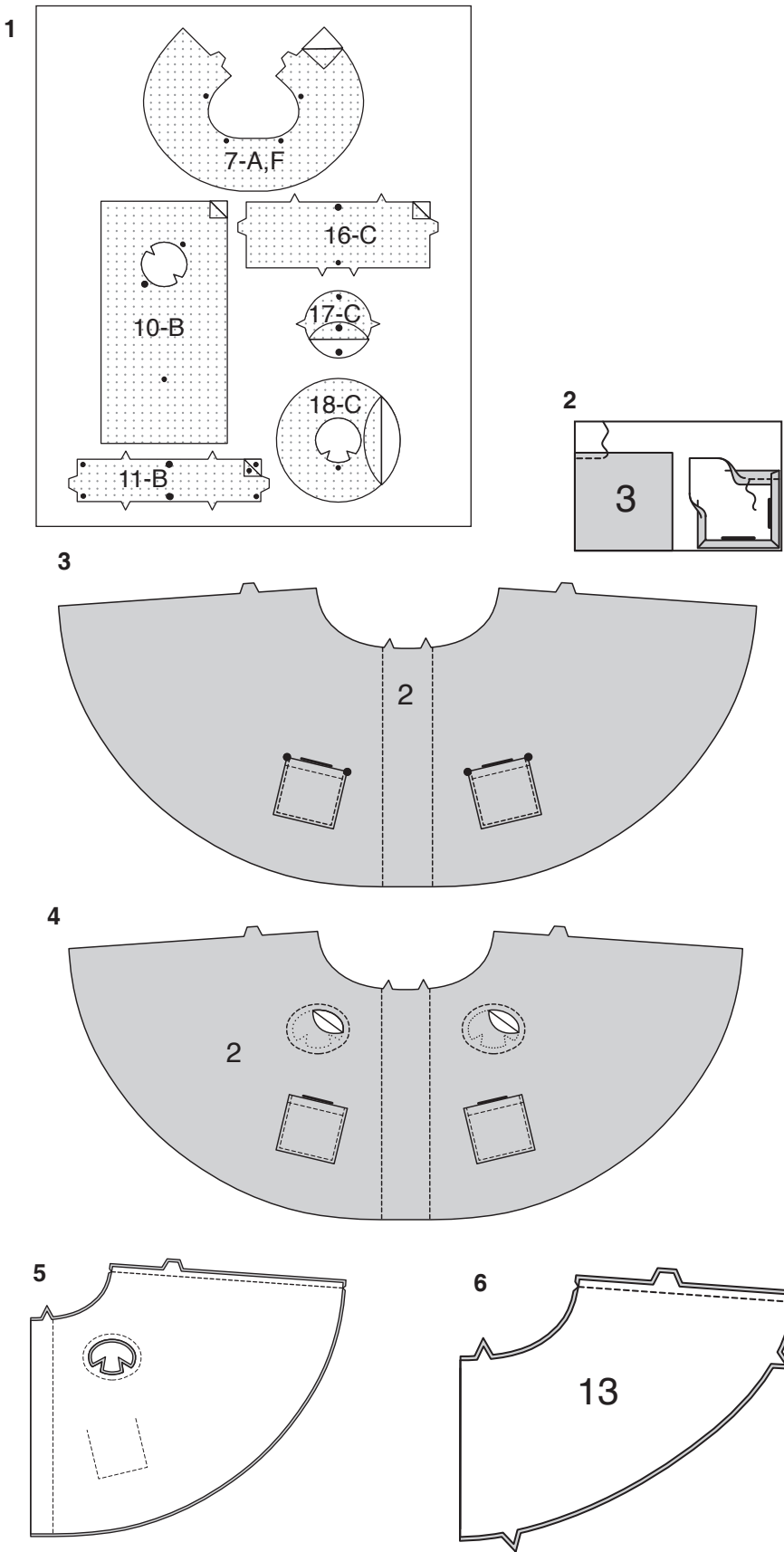
STUFF



ENCASE



CURVES



NOTE: All seams are 1/4”(6mm) unless otherwise indicated.

VIEW A, B, C

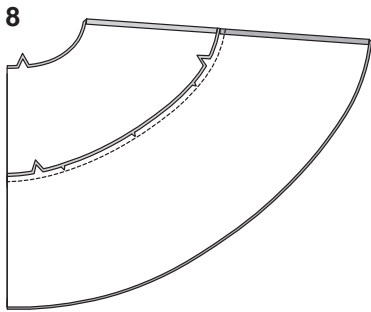
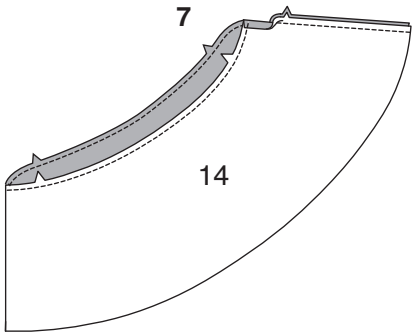
NOTE: Under each sub-heading, View A will be shown unless otherwise indicated.

INTERFACING

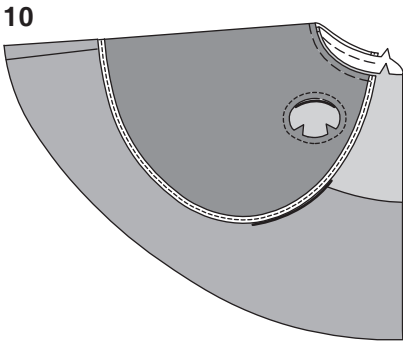
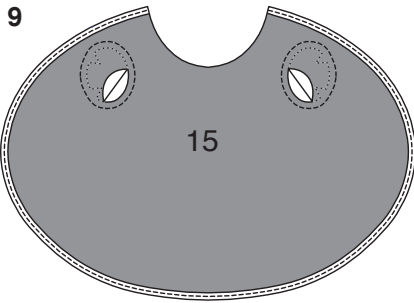
1. Pin **INTERFACING** to wrong side of each matching **FABRIC** section. Fuse, following manufacturer’s instructions.

FRONT AND BACK

- 2. VIEW A**
FINISH upper edge of **POCKET** (3). Press under 3/8” (1cm) seam allowance on upper edge. Stitch 1/4”(6mm) from finished edge. Press under seam allowance on lower and side edges of pocket.
- 3.** On **OUTSIDE**, pin pockets to **FRONT AND BACK** (2) matching large dots. **TOPSTITCH** side and lower edges of pockets. **TOPSTITCH** front along stitching lines.
- 4. VIEW A, B**
Stitch **FRONT AND BACK** (2) along stitching lines. Cut out armhole openings.
- 5.** With **RGHT** sides together, stitch center back seam, in a 1/4”(6mm) seam.
- 6. VIEW C**
With **RIGHT** sides together, stitch center back seam of **FRONT AND BACK** (13), in a 1/4”(6mm) seam.

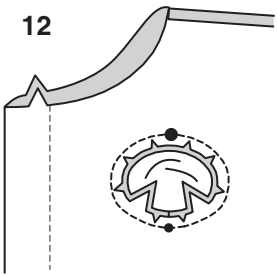
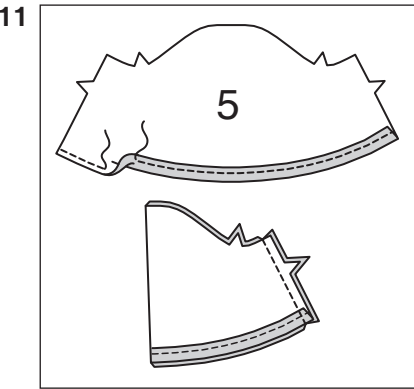


7. With RIGHT sides together stitch center back seam of SKIRT (14). Machine stitch a scant 1/4" (3mm) from upper edge of skirt.
8. With RIGHT sides together, pin skirt to lower edge of front and back, matching notches and center back seam. Clip to stitching as necessary. Baste. Stitch. Press seam up.



9. Stitch OVERLAY (15) along stitching lines. Cut out armhole openings. **ENCASE** outer edge of overlay, leaving neck edge open. See **GENERAL DIRECTIONS FOR BIAS TAPE**.
10. On OUTSIDE, pin overlay to neck edge of garment matching centers. Baste in a 1/4"(6mm) seam.

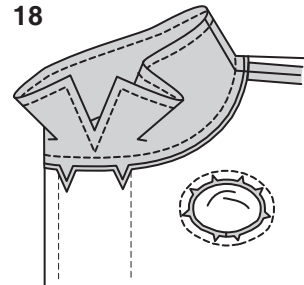
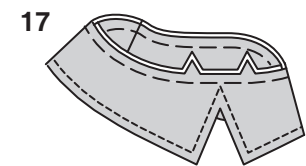
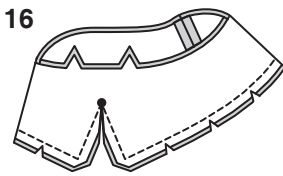
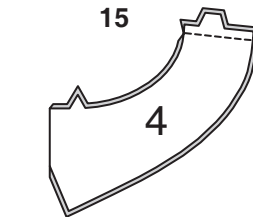
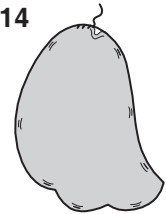
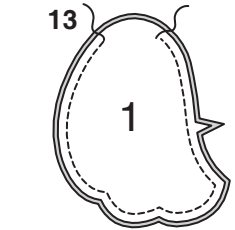
SLEEVE AND WING



11. **FINISH** lower edge of SLEEVE (5). Press under 3/8" (1cm) seam allowance on lower edge. Stitch 1/4"(6mm) from raw edge. With RIGHT sides together, stitch sleeve seam.
12. Clip front and back OR overlay to stitching at armhole edges. With RIGHT sides together, pin sleeve to armhole opening matching notches, and dots. Stitch in a 1/4"(6mm) seam.

13. With RIGHT sides together, pin WING (1) sections together, having raw edges even. Stitch along outer edge leaving an opening near upper edge, large enough for turning.
14. Turn wing RIGHT side out. Press. Lightly **STUFF**. **SLIPSTITCH** opening close. **NOTE:** wings will be inserted in a later step.

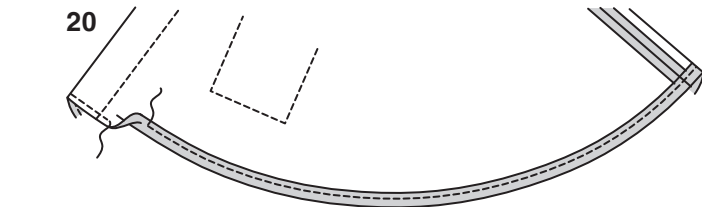
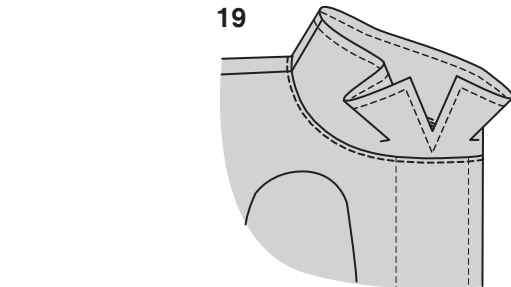
COLLAR



15. With RIGHT sides together, stitch center back seam of COLLAR (4) sections.
16. With RIGHT sides together, pin collar sections together having raw edges even. Stitch outer edge leaving notched edge open, pivoting with needle in fabric at center small dot. **TRIM SEAM**. Clip curves and to inner corner at small dot.
17. Turn collar RIGHT side out. Press. Baste raw edges together. **VIEW A- TOPSTITCH** outer edge of collar.
18. With RIGHT sides together, pin collar to neck edge matching notches and center back seam. Clip to stitching as necessary, Baste. Stitch in a 1/4"(6mm) seam. Press seam down pressing collar out.

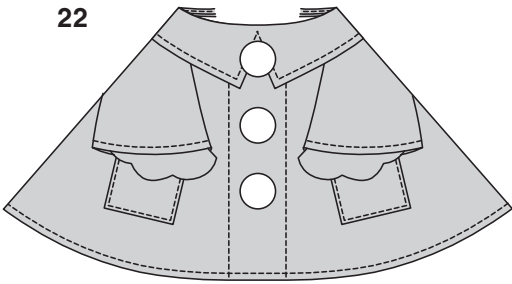
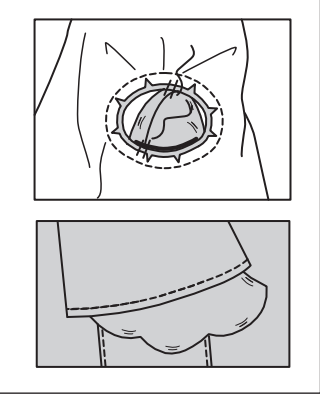
19. On OUTSIDE, **EDGE STITCH** front and back neck seam, catching in pressed seam on INSIDE.

FINISHING

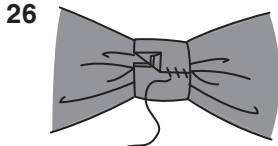
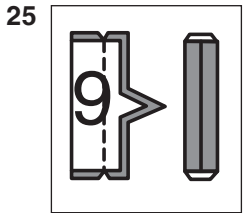
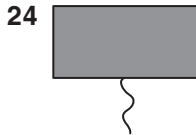
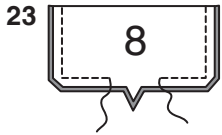


20. **FINISH** lower edge of coat, gown, OR skirt. Press under 3/8" (1cm) seam allowance on lower edge. Stitch 1/4"(6mm) from raw edge.

21

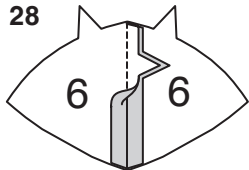
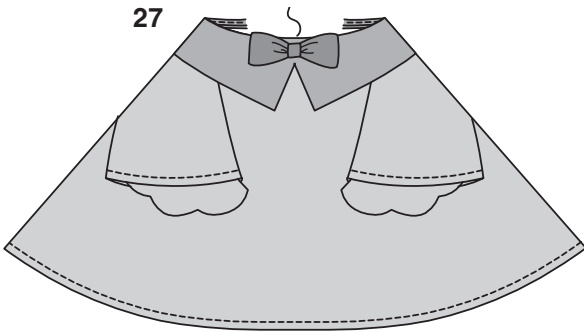


21. Insert wings into each sleeve opening, having wings extend evenly beyond hemmed edge of sleeve. **SLIPSTITCH** wing securely in place at armhole edge
22. **VIEW A, C-** Hand sew buttons to front at markings.

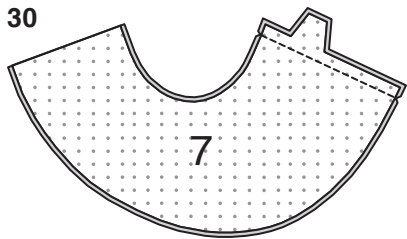
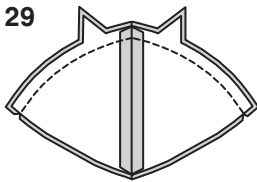


23. **VIEW B, C**
Fold BOW (8) in half, lengthwise, with RIGHT sides together. Stitch in 1/4" (6mm) seam, leaving an opening to turn. **TRIM SEAM** and corners.
24. Turn bow RIGHT side out; press. **SLIP-STITCH** opening.
25. Fold KNOT (9) in half, lengthwise, with RIGHT sides together. Stitch notched edge in 1/4" (6mm) seam. Turn knot RIGHT side out, bringing seam to center on UNDERSIDE; press.
26. Crush bow at center and place knot around center of bow, turning under and lapping one end on UNDERSIDE. **SLIPSTITCH** ends securely, catching in UNDERSIDE of bow.

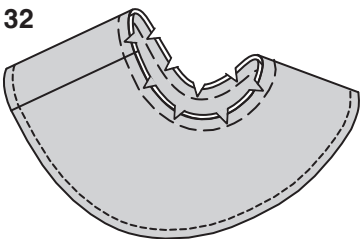
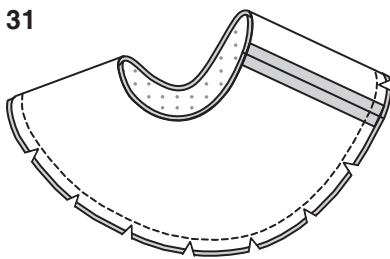
27. Hand-sew bow securely to center of collar.



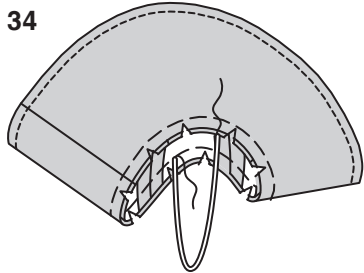
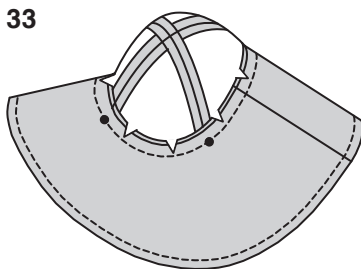
28. With RIGHT sides together, stitch seams of two CROWN (6) sections together in a 1/4"(6mm) seam. Press seams open.
29. Stitch seams of remaining two crown sections in same manner. With RIGHT sides together, pin the two crown halves together. Stitch in a 1/4"(6mm) seam. This is your center seam.



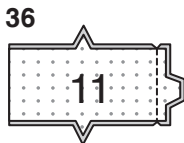
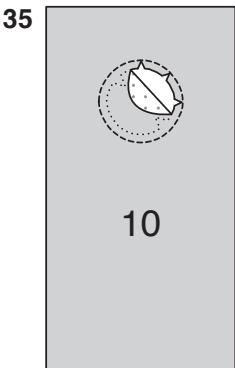
30. With RIGHT sides together, stitch center back seam of BRIM (7).



31. Stitch center back seam of brim facing. With RIGHT sides together, stitch facing to brim, matching centers, leaving inner edges open, as shown. **TRIM SEAM**; clip curves.
32. Turn brim RIGHT side out; press. Machine-baste raw edges together. Clip raw edges of brim to machine stitching. **TOPSTITCH** finished edge of brim.



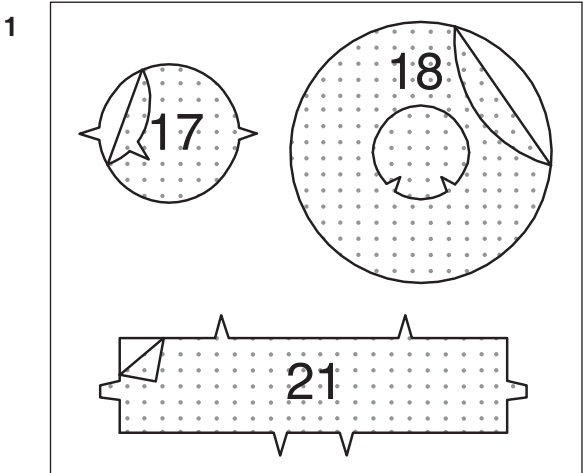
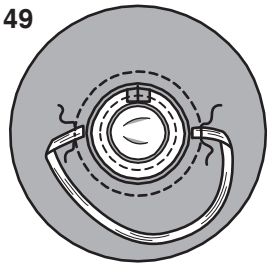
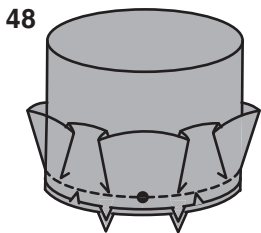
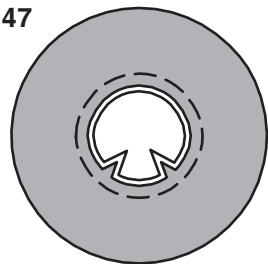
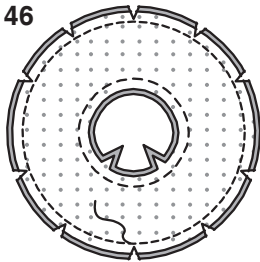
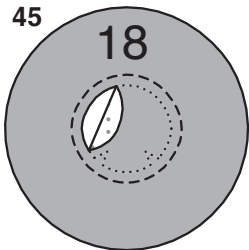
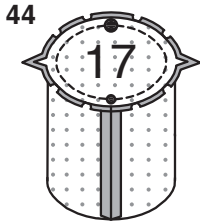
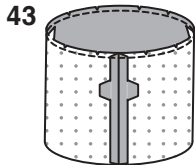
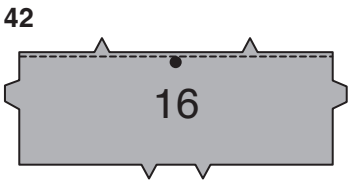
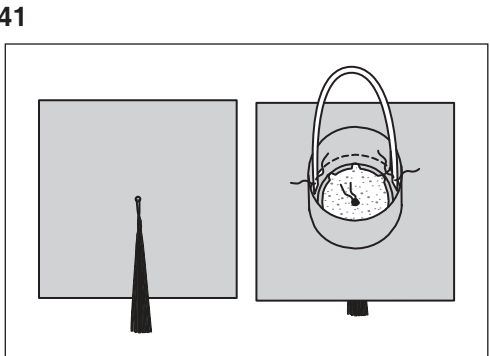
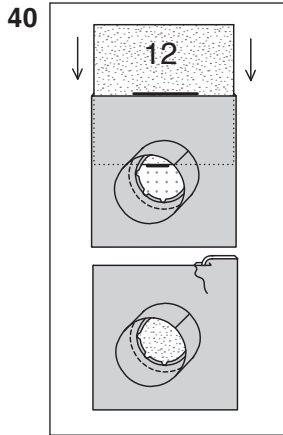
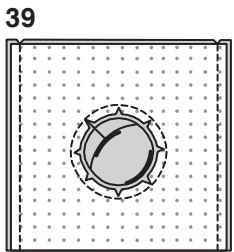
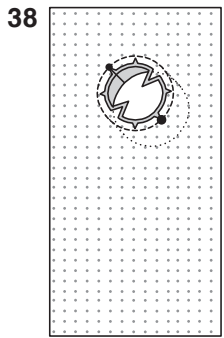
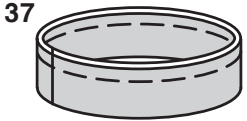
33. On OUTSIDE, pin brim to crown, matching crown seams to dots. Stitch in a 1/4"(6mm) seam.
34. Cut a piece of elastic approximately 5" (13cm) long. On INSIDE hand sew or glue each side of elastic to INSIDE of brim, as shown.



35. Stitch TOP (10) along stitching lines. Cut out center along cut out lines. Clip to stitching being careful not to clip through stitching.
36. With RIGHT sides together, stitch center back seam of CROWN (11) matching notches.

S3158

4 of 6



37. Fold crown in half lengthwise with WRONG sides together. Baste raw edges.

38. With RIGHT sides together, pin crown to top matching notches and dots, clipping to stitching as necessary. Baste. Stitch in a 1/4”(6mm) seam.

39. Fold top in half along fold line, with RIGHT sides together. Stitch side edges leaving back edge open.

40. Turn top RIGHT side out. Press. Cut a piece of plastic canvas or cardboard the measurement of GUIDE (12). Insert plastic canvas into opening in top. Press under 1/4”(6mm) on opening edges. **SLIPSTITCH** opening closed.

41. Poke a hole at small dot on top of cap through all thicknesses. Thread string end of tassel through hole and tie in a knot. Glue button to INSIDE of cap over ends of tassel to secure. Cut a piece of elastic approximately 5” (13cm) long. On INSIDE hand sew or glue each side of elastic to INSIDE of brim, as shown.

HAT C

42. Machine-stitch 1/8” (3mm) from edge of CROWN (16) with large dot.

43. Stitch center back seam of crown in a 1/4”(6mm) seam. Press seam open. Clip single notched edge of crown to stitching.

44. With RIGHT sides together, pin TOP (17) to upper edge of crown, matching centers and notches, having raw edges even. Stitch seam.

45. Stitch BRIM (18) sections along stitching lines. Cut out openings along cut out lines.

46. With RIGHT sides together, pin brim sections together, having raw edges even. Stich outer edge. Clip curves.

47. Turn brim RIGHT side out. Press. Baste 1/4”(6mm) from inner edge.

48. On OUTSIDE, pin brim to lower edge of crown matching notches and dots, clipping to stitching as necessary. Baste. Stitch.

49. Cut a piece of elastic approximately 5” (13cm) long. On INSIDE hand sew or glue each side of elastic to INSIDE of brim, as shown.

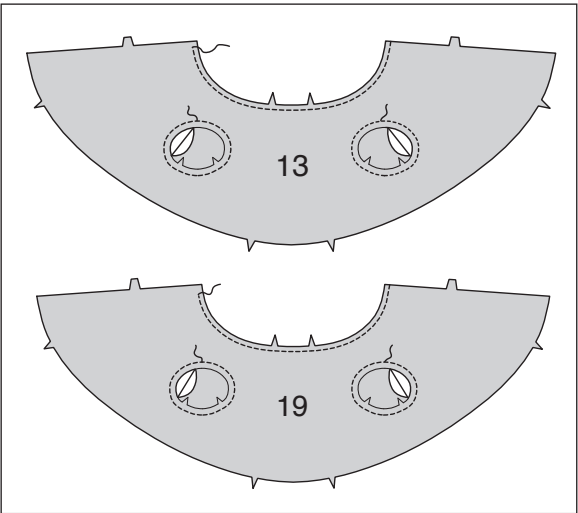
VIEW D, E

NOTE: Under each sub-heading, View D will be shown unless otherwise indicated.

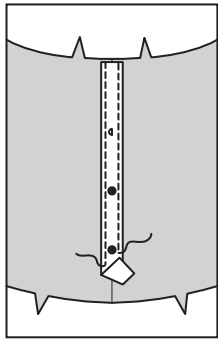
INTERFACING

1. Pin INTERFACING to wrong side of each matching FABRIC section. Fuse, following manufacturer's instructions.

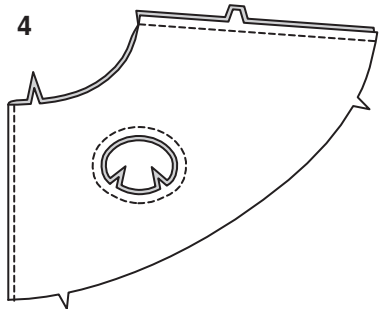
2



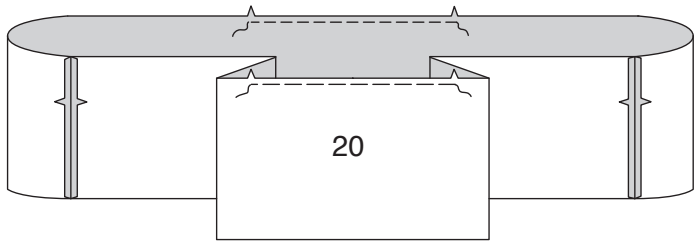
3



4



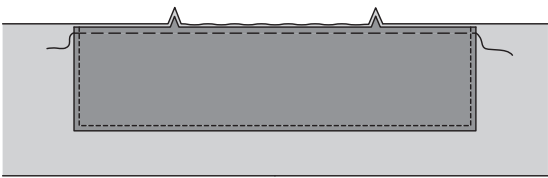
5



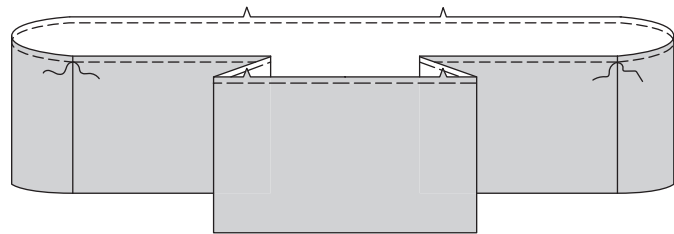
6



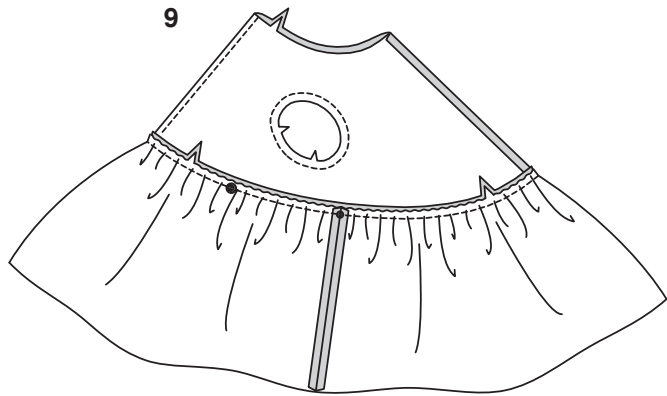
7



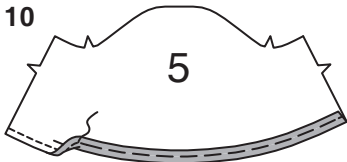
8



9



10



FRONT AND BACK

2. Stitch FRONT AND BACK (13 or 19) along stitching lines. Cut out armhole openings. **FINISH** neck edge of front and back.

3. Cut a piece of ribbon the length of center front. On OUTSIDE, pin ribbon to garment, centering along center front fold line. **EDGESTITCH** long edges of ribbon. Transfer small dots to ribbon.

4. With RIGHT sides together, stitch center back seam of front and back.

5. With RIGHT sides together, stitch side seams of SKIRT (20) sections. **VIEW E- GATHER** upper edge of skirt between notches.

6. VIEW E **NARROW HEM** lower and side edges of APRON (22).

7. On OUTSIDE, pin apron to upper edge of skirt matching notches. Adjust gathers of skirt to fit. Baste.

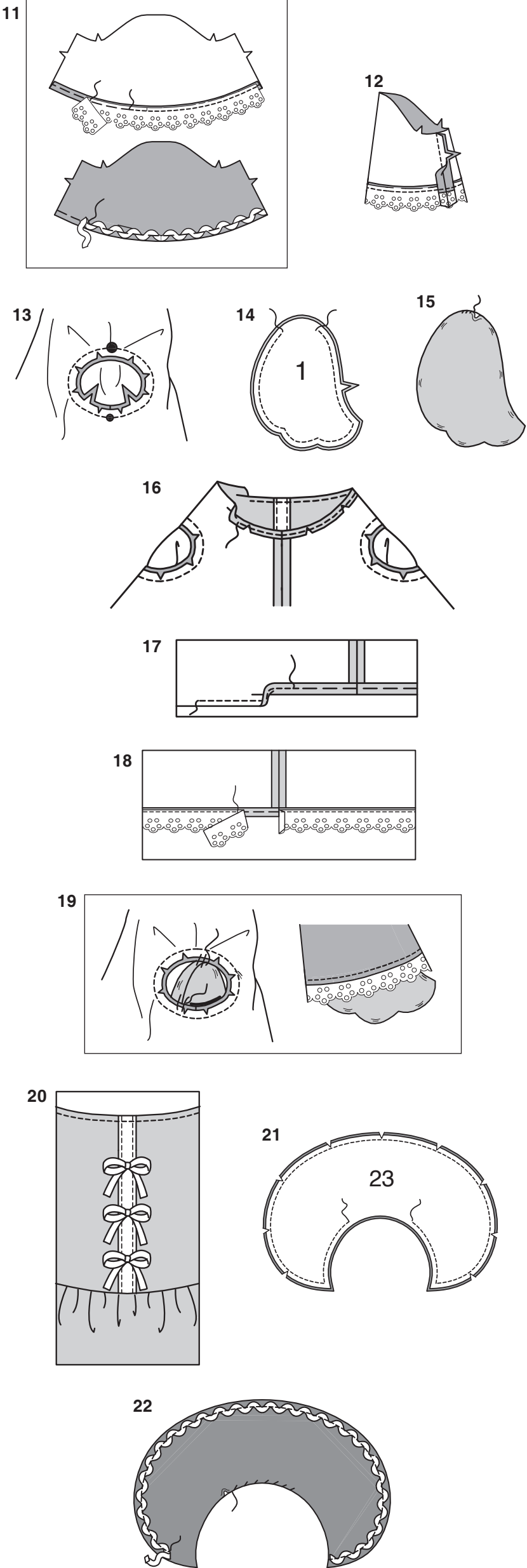
VIEW D, E

8. GATHER upper edge of skirt, breaking stitching at side seams, through all thicknesses for View E.

9. With RIGHT sides together, pin skirt to lower edge of front and back, matching side seams to small dots and apron to large dots on front for View E. Adjust gathers to fit. Baste. Stitch. Press seam up.

SLEEVE AND WING

10.FINISH lower edge of SLEEVE (5). Press under 3/8” (1cm) seam allowance on lower edge to INSIDE. Baste 1/4”(6mm) from raw edge.



11. Cut two pieces of trim the width of lower edge of sleeve.
VIEW D- On **INSIDE**, pin trim to lower edge of sleeve, placing flat edge of lace just covering raw edge of hem. Baste. Stitch hem as basted.
VIEW E- On **OUTSIDE**, pin trim to lower edge of sleeve centering along hem basting. Baste. Stitch along center of trim.

12. With **RIGHT** sides together, stitch sleeve seam.

13. Clip front and back to stitching at armhole edges. With **RIGHT** sides together, pin sleeve to armhole opening matching notches and dots. Stitch in a 1/4”(6mm) seam.

14. With **RIGHT** sides together, pin **WING** (1) sections together, having raw edges even. Stitch along outer edge leaving an opening at upper edge, large enough for turning.

15. Turn wing **RIGHT** side out. Press. Lightly **STUFF**. **SLIPSTITCH** opening close.
NOTE: wings will be inserted in a later step.

FINISHING

16. Press under 1/4”(6mm) seam allowance on neck edge, clipping to stitching as necessary to ease curve. Stitch 1/8”(3mm) from finished edge.

17. **FINISH** lower edge of dress. Press under 3/8” (1cm) seam allowance on lower edge to **INSIDE**. Baste 1/4”(6mm) from raw edge.

18. Cut a piece of trim the width of lower edge of dress plus 1/2”(1.3cm).
On **INSIDE**, pin trim to lower edge of dress, placing flat edge of lace just covering raw edge of hem. Turn under and lap ends of trim at seam. Stitch hem as basted.

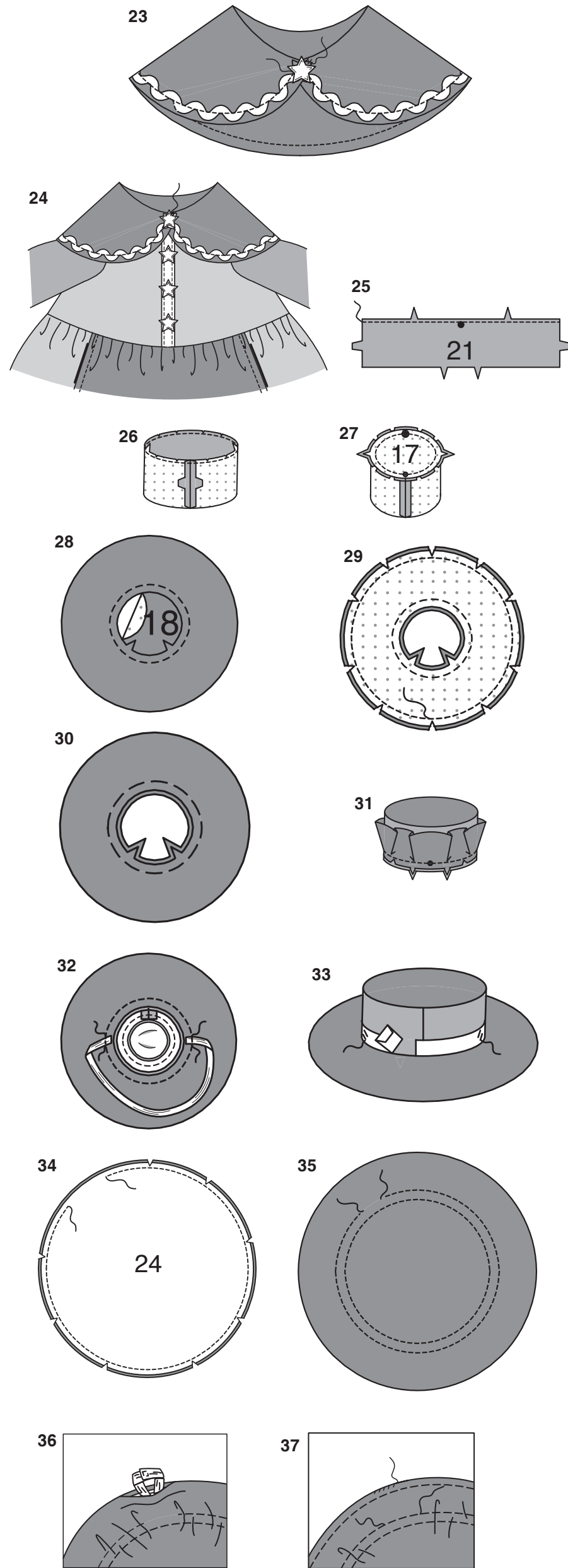
19. Insert wings into each sleeve opening, having wings extend evenly beyond hemmed edge of sleeve. **SLIPSTITCH** wing securely in place at armhole edge.

20. Hand-sew ribbon bows or buttons to front (over ribbon) at markings.

VIEW E

21. With **RIGHT** sides together pin **SCARF** (23) sections together, having raw edges even. Stitch outer edge leaving an opening large enough for turning.

22. Turn scarf **RIGHT** side out. Press. **SLIPSTITCH** opening closed. Cut a piece of trim the length of outer edge of scarf, plus 1/2”(1.3cm).
On **OUTSIDE**, pin trim to outer edge of scarf, just above finished edge. Turn under ends of trim at neck edge. Stitch along center of trim.



23. Bring front edges of scarf together, slightly overlapping ends. Hand-**TACK** together. Hand-sew button to scarf at center front.

24. On **OUTSIDE**, pin scarf to neck edge matching centers. **TACK** scarf in place if you prefer.

HAT D

25. Machine-stitch 1/8” (3mm) from edge of **CROWN** (21) with large dot.

26. Stitch center back seam of crown in a 1/4”(6mm) seam. Press seam open. Clip single notched edge of crown to stitching.

27. With **RIGHT** sides together, pin **TOP** (17) to upper edge of crown, matching centers and notches, having raw edges even. Stitch seam.

28. Stitch **BRIM** (18) sections along stitching lines. Cut out openings along cut out lines.

29. With **RIGHT** sides together, pin brim sections together, having raw edges even. Stich outer edge. Clip curves.

30. Turn brim **RIGHT** side out. Press. Baste 1/4”(6mm) from inner edge.

31. On **OUTSIDE**, pin brim to lower edge of crown, matching notches and dots. Clip to stitching as necessary. Baste. Stitch. **TRIM SEAM**. Clip curves.

32. Cut a piece of elastic approximately 5” (13cm) long. On **INSIDE** hand sew or glue each side of elastic to **INSIDE** of brim, as shown.

33. Cut a piece of ribbon the length of crown plus 1/2”(1.3cm).
On **OUTSIDE**, pin ribbon to crown of hat, turning under and lapping edges at center back seam. Hand-**TACK** ribbon to secure. Glue flowers to crown and brim, as desired OR as shown on front of envelope.

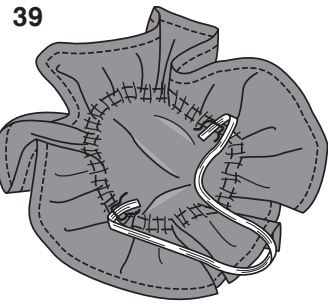
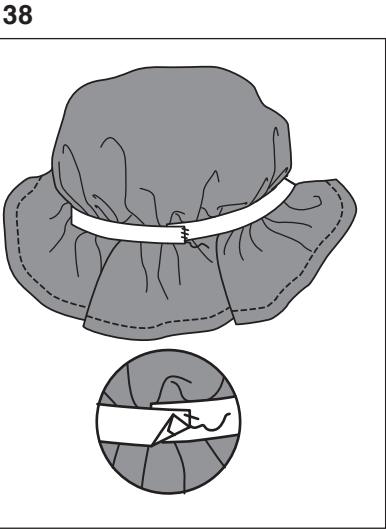
HAT E

34. With **RIGHT** sides together, pin **HAT** (24) sections together, having raw edges even. Stitch along outer edge in a 1/4”(6mm) seam, leaving an opening large enough for turning. **TRIM SEAM**. Clip curves.

35. Turn hat **RIGHT** side out. Press. Stitch along stitching lines, leaving an opening at the same side as previous opening, as shown.

36. Cut a piece of elastic 10”(26cm) long. Insert elastic through opening in casing. Overlap ends and hold with a safety pin. Stitch ends of elastic securely.

37. Stitch remaining casing seam, connecting with previous stitching, being careful not to catch in elastic while stitching. **SLIPSTITCH** opening closed. **TOPSTITCH** outer edge of hat.



38. Cut a piece of ribbon the length of hat casing plus 1/2”(1.3cm). On OUTSIDE, pin ribbon over casing of hat, turning under and lapping edges at center back seam. Hand-**TACK** ribbon to secure.

39. Cut a piece of elastic approximately 5” (13cm) long. On INSIDE hand sew or glue each side of elastic to INSIDE of hat, as shown. Lightly stuff INSIDE of hat.

VIEW F

INTERFACING

1. Pin INTERFACING to wrong side of each matching FABRIC section. Fuse, following manufacturer’s instructions.

FRONT AND BACK

2. Pin fusible fleece to TOP (25) pieces having raw edges even. Fuse in place following manufactures’ directions.

3. Cut six pieces of double fold bias tape as follows:
Neck- One 12” (31cm) long piece.
Shoulder straps – One 14” (36cm) long piece.
Center back- One 4” (10cm) long piece.
Center front band- One 4-1/4” (10.8cm) long piece.
Sides- Two 6-1/2”(16.51cm) long pieces.
Stitch close to long edges of each piece of bias tape.

4. To form miter in shoulder straps piece, fold along center of bias tape. Diagonally stitch across folded edge, as shown.

5. On OUTSIDE, pin free ends shoulder strap bias strip to each side of upper edge of one top section, centering ends between outer small dots, as shown. Baste straps in place.

6. On OUTSIDE, pin ends of neck bias tape strip to upper edge of top, centering ends over inner small dots. Baste.

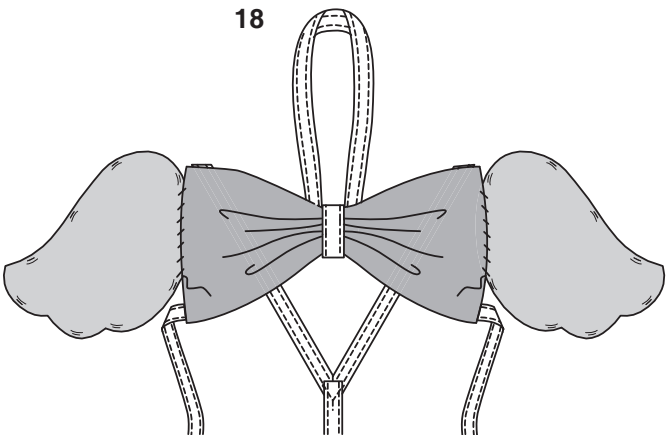
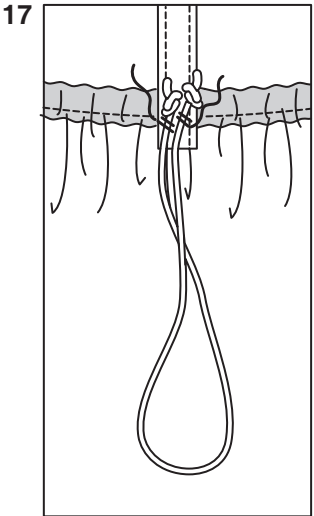
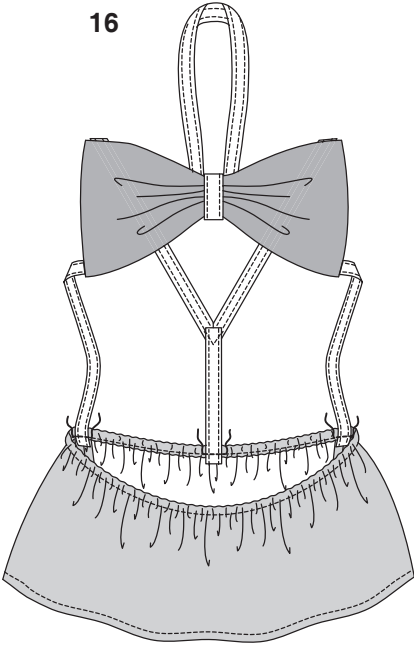
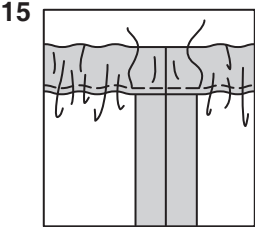
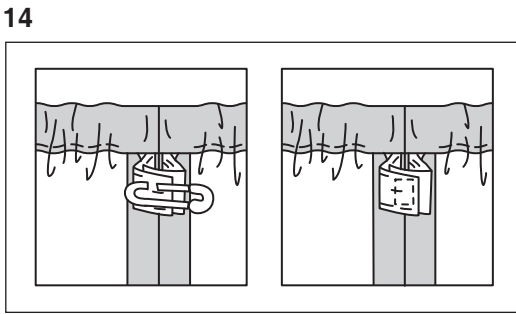
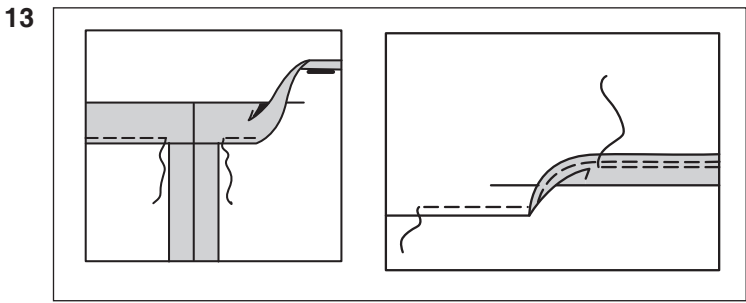
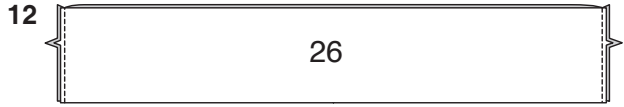
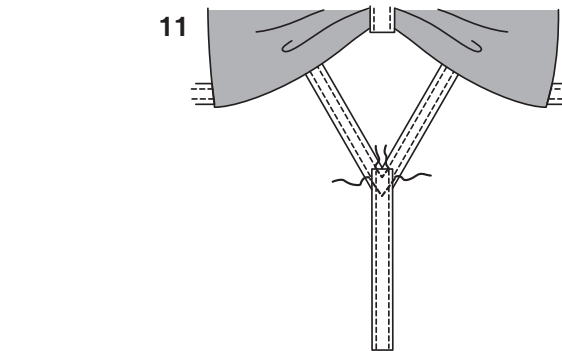
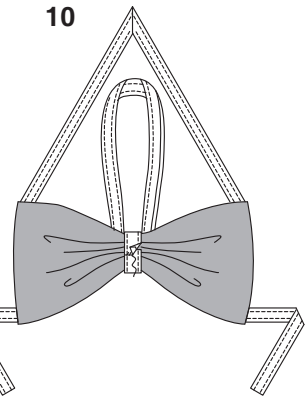
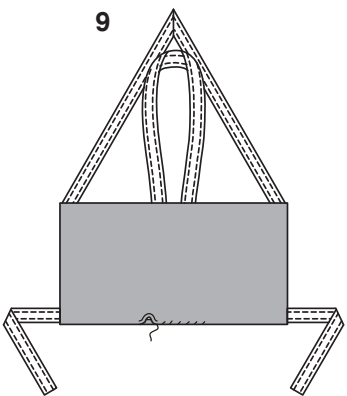
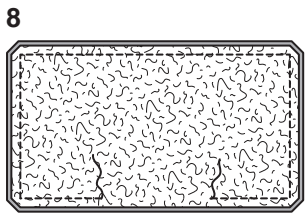
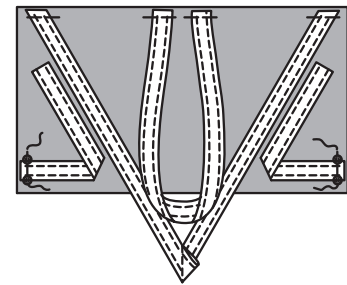
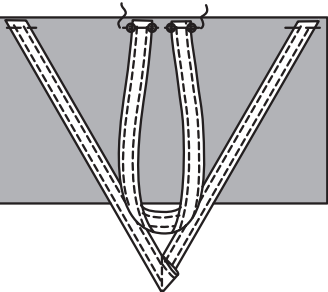
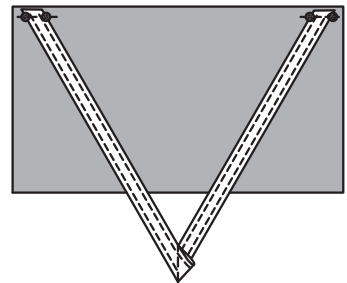
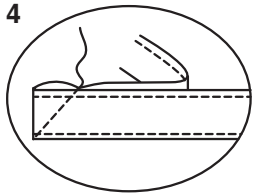
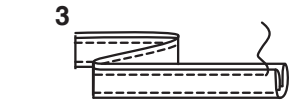
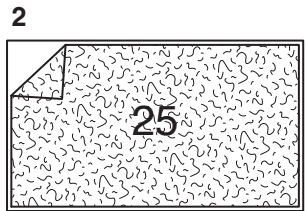
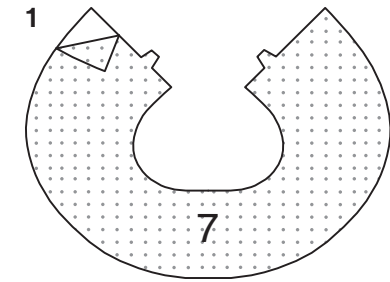
7. On OUTSIDE, pin free end of each side bias tape, to lower edge of top. Baste in place.
TIP: Pin bias tape out of the way when stitching remaining seams.

8. With RIGHT sides together, pin top sections together having raw edges even. Stitch outer edge in a 1/4”(6mm) seam, leaving an opening at lower edge, large enough for turning. Trim corners.

9. Turn top RIGHT side out. Press. **SLIPSTITCH** opening closed.

10. Crush top at center and place center front band bias tape strip around center of bow, bringing raw edges together at UNDERSIDE. **SLIPSTITCH** ends securely catching in UNDERSIDE of bow.

11. Pin center back bias strip to mitered end of shoulder straps. Stitch securely in place, connecting with previous stitching.



SKIRT

12. With RIGHT sides together, stitch SKIRT (26) sections together at sides.

13. Turn in 1/4”(6mm) on upper raw edge of skirt. Fold upper edge to INSIDE along fold line. Stitch close to inner pressed edge, leaving an opening at side seam to insert elastic.
FINISH lower edge of skirt. Press up 3/8”(1cm) hem on lower edge. Stitch 1/4”(6mm) from pressed edge.

14. Cut a piece of elastic measuring 20”(51cm) long. Insert elastic through opening in casing. Overlap ends and hold with a safety pin. Stitch ends of elastic securely.

15. **SLIPSTITCH** opening closed.

16. Pin center back bias tape strip, to center back of skirt, having end of strip extend 1/4”(6mm) beyond casing, as shown. Stitch tape in place, connecting with casing stitching. Stitch side straps to each side seam, in same manner as back.

17. Cut a piece of elastic cord 25”(64cm) long. Fold elastic in half forming a loop. Knot ends. On INSIDE, pin elastic to center back casing (over bias tape) as shown. Securely **TACK** elastic in place.

FINISHING

Construct wing sections in same manner as View C, D- SLEEVE AND WING section, steps 14 and 15.

18. Pin each wing to side edges of top, as shown. Securely **SLIPSTITCH** wings in place.

HAT F

Construct hat as shown for Views A, B, C- Hat A. See steps 28-34.