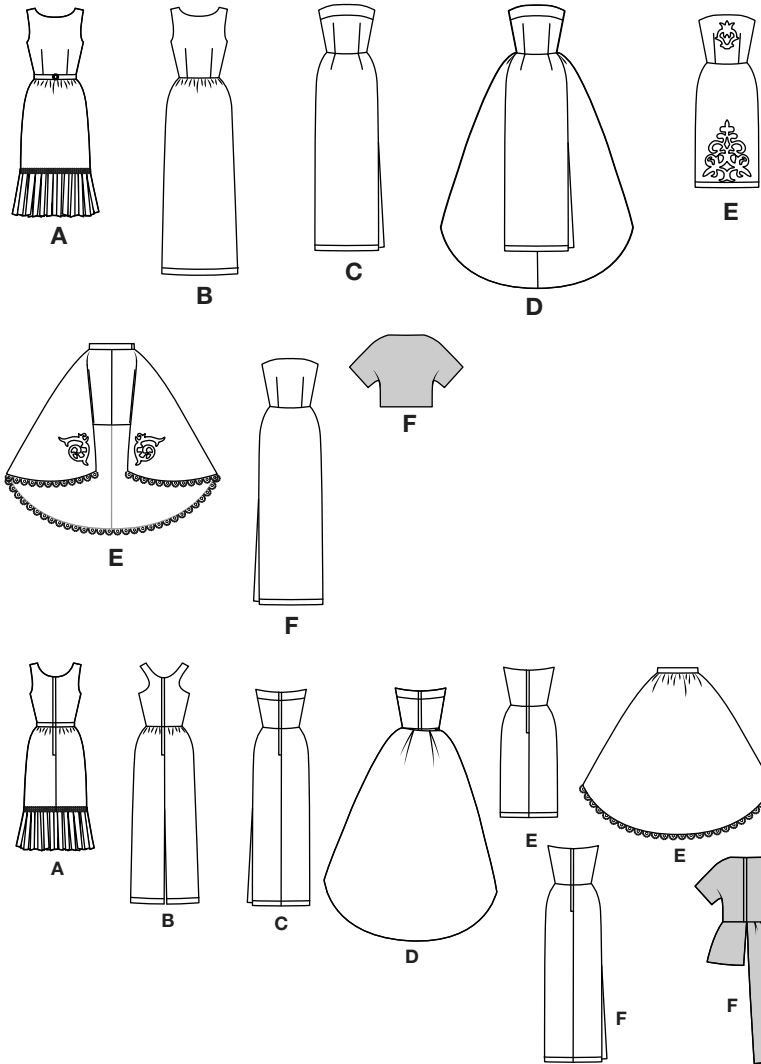
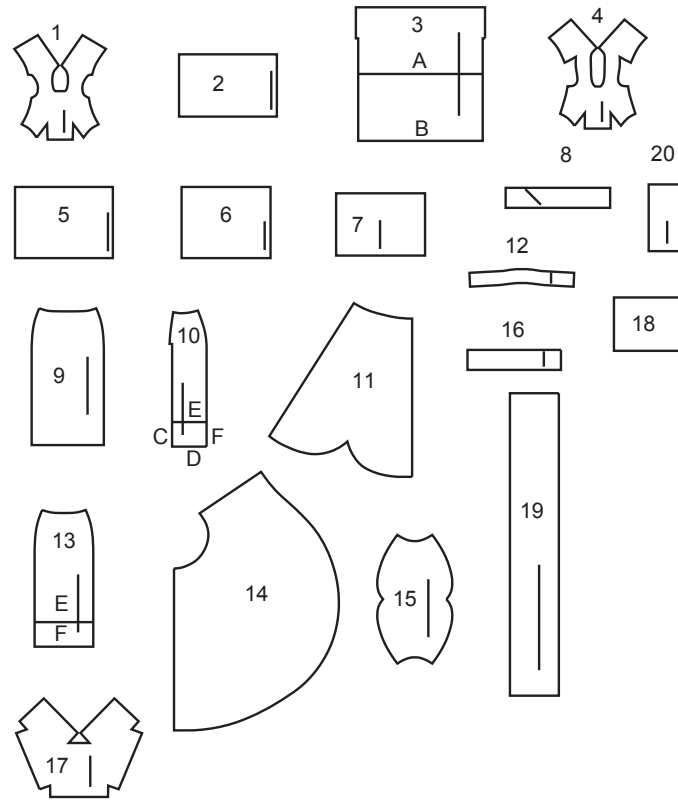


Simplicity®

Thank you for purchasing this Simplicity pattern. We made every effort to provide you with a high quality product.



20 PIECES



- 1 BODICE - A
- 2 FACING - A
- 3 SKIRT - A,B
- 4 BODICE - B
- 5 FACING - B
- 6 BODICE FRONT - C,D,E,F
- 7 BODICE BACK - C,D,E,F
- 8 BAND - C,D
- 9 SKIRT FRONT - C,D
- 10 SKIRT BACK - C,D,E,F
- 11 TRAIN - D
- 12 FACING - E,F
- 13 SKIRT FRONT - E,F
- 14 PANIER - E
- 15 BUSTLE - E
- 16 WAISTBAND - E
- 17 JACKET - F
- 18 FACING - F
- 19 RIGHT TAIL - F
- 20 LEFT TAIL - F

General Directions

The Pattern

- SYMBOLS**
- ↔ GRAIN LINE Place on straight grain of fabric parallel to selvage
 - ⇓ PLACE SOLID LINE on fold of fabric.
 - CENTER FRONT OR BACK of garment.
 - ▽▽ NOTCHES
 - DOTS
 - CUTTING LINE
 - == LENGTHEN OR SHORTEN LINES

SEAM ALLOWANCE: 5/8" (1.5cm) unless otherwise stated is included but not printed on MULTI-SIZE PATTERNS. Mark your size with colored felt tip pen. See chart on tissue for how to use MULTI-SIZE PATTERNS.

ADJUST IF NEEDED

Make adjustments before placing pattern on fabric.

TO LENGTHEN: Cut pattern between lengthen or shorten lines. Spread pattern evenly, the amount needed and tape to paper.

TO SHORTEN: At lengthen or shorten lines, make an even pleat taking up amount needed. Tape in place.

When lengthen or shorten lines are not given, make adjustments at lower edge of pattern.

Cutting/Marking

BEFORE CUTTING:

PRESS pattern pieces with a warm dry iron. PRE-SHRINK fabric by pre-washing washables or steam-pressing non-washables.

CIRCLE your cutting layout.

PIN pattern to fabric as shown in Cutting Layouts.

• FOR DOUBLE THICKNESS: Fold fabric with RIGHT sides together.

• FOR SINGLE THICKNESS: Place fabric RIGHT side up.

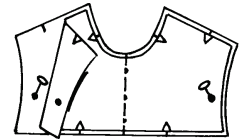
• FOR PILE, SHADED OR ONE WAY DESIGN FABRICS: Use "with nap" layouts

AFTER CUTTING:

Transfer markings to WRONG side of fabric before removing pattern. Use pin and chalk method or dressmaker's tracing paper and wheel.

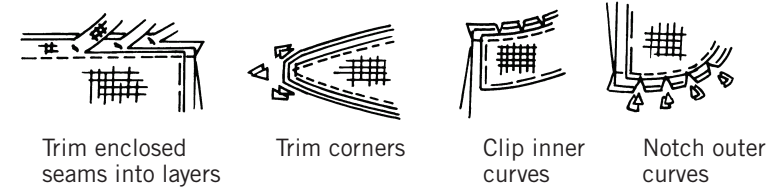
To Quick Mark:

- Snip edge of fabric to mark notches, ends of fold lines and center lines.
- Pin mark dots.



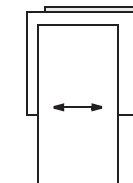
Sewing

- SEW garment following **Sewing Directions**.
- PIN or machine-baste seams matching notches.
- STITCH 5/8" (1.5 cm) seams unless otherwise stated.
- PRESS seams open unless otherwise indicated clipping when necessary so seams will lie flat.
- TRIM seams to reduce bulk, as shown below.

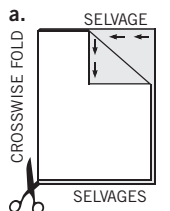


SPECIAL CUTTING NOTES

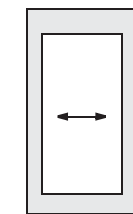
★ If layout shows a piece extending past fold, cut out all pieces except piece that extends.



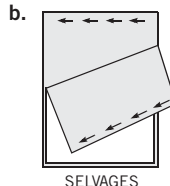
✱ Mark small arrows along both selvages indicating direction of nap or design. Fold fabric crosswise with RIGHT sides together, and cut along fold (a).



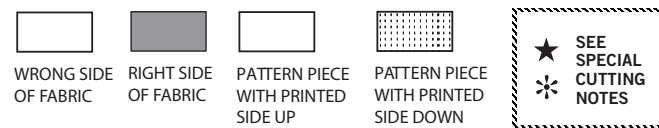
Open out fabric to single thickness. Cut extending piece on RIGHT side of fabric in position shown.



Turn one fabric layer around so arrows on both layers go in the same direction. Place RIGHT sides together (b).



Cutting Layouts



POSITION OF PATTERN PIECES MAY VARY SLIGHTLY ACCORDING TO YOUR PATTERN SIZE

DRESS A
CUT ONE OF PIECES 1 2 3 FROM REMNANT.

INTERFACING A
CUT ONE OF PIECE 1 FROM REMNANT.

GOWN B
CUT ONE OF PIECES 3 4 5 FROM REMNANTS.

INTERFACING B
CUT ONE OF PIECE 4 FROM REMNANT.

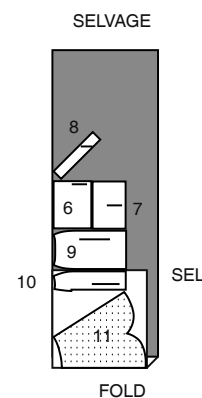
GOWN C
CUT ONE OF PIECES 6 7 8 9 AND TWO OF PIECE 10 FROM REMNANTS.

INTERFACING C,D,E,F
CUT ONE OF PIECES 6 7 FROM REMNANTS.

GOWN AND OVERSKIRT D

USE PIECES 6 7 8 9 10 11

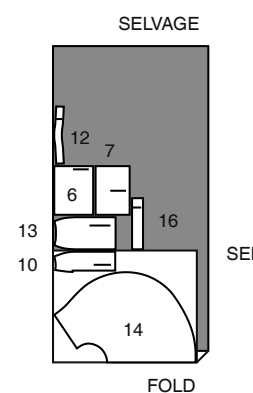
45" (115CM)
WITH NAP
ALL SIZES



GOWN AND OVERSKIRT E

USE PIECES 6 7 10 12 13 14 16

45" (115CM)
WITH NAP
ALL SIZES

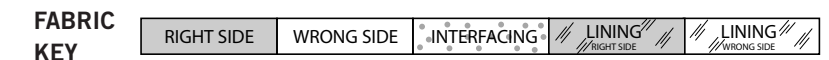


BUSTLE E
CUT ONE OF PIECE 15 FROM REMNANT.

GOWN F
CUT ONE OF PIECES 6 7 12 13 AND TWO OF PIECE 10 FROM REMNANTS.

CONTRAST (TUNIC)
CUT ONE OF PIECES 17 18 19 20 FROM REMNANTS.

Sewing Directions



Read **General Directions** before you begin.

GLOSSARY OF SEWING METHODS

Sewing methods in **BOLD TYPE** have Sewing Tutorial Video available. Scan **QR CODE** to watch videos:

EDGESTITCH – see **Machine Stitches: "how to edgestitch"** video

SLIPSTITCH – see **Hand Stitching: "how to slip stitch"** video

STITCH IN THE DITCH - see **Machine Stitches: "how to stitch in the ditch"** video

TRIM – see **Seams: "how to trim, clip and layer seams"** video

UNDERSTITCH - see **Machine Stitches: "how to understitch"** video

Sewing methods shown in **BOLD** are defined below:

GATHER – Stitch 1/4" (6mm) from cut edge using a long stitch. Stitch again 1/8" (3mm) from the first stitching within the seam allowance.

FINISH – Stitch 1/4" (6mm) from raw edge and finish with zigzag stitches, overcast, overlock.

REMNANT—When working with pattern pieces within a block, cut tissue block along outer solid line. Pin pattern to RIGHT side of fabric remnant. If pattern is cut from INTERFACING, fuse the interfacing to the WRONG side of fabric remnant following manufacturer's instructions before cutting out individual pattern pieces. Cut out each pattern piece. Transfer markings to WRONG side of fabric, using a washable fabric marking pen or pencil, using WRONG side of pattern tissue when required.

TOPSTITCH – Stitch 1/8"(3mm) from finished edge of seam.

SEWING TUTORIALS



Build your skills viewing short, easy-to-follow videos at simplicity.com/sewingtutorials

PATTERN PIECES WILL BE IDENTIFIED BY NUMBERS THE FIRST TIME THEY ARE USED.

STITCH 1/4" (6MM) SEAMS WITH RIGHT SIDES TOGETHER UNLESS OTHERWISE STATED.

DRESS A, GOWN B

1. Fuse INTERFACING to WRONG side of BODICE (1 or 4), following manufacturer's instructions. To make dart seams in bodice, on INSIDE, bring broken lines together, matching small dots. Stitch along broken line from raw edge to the point. Press darts toward side.

2. Cut out facing from FACING block (2 or 5). **FINISH** outer edges of facings. With RIGHT sides together and raw edges even, pin neck and armhole facings to bodice, matching centers and notches. Stitch. **TRIM.**

3. Turn facings to INSIDE. Press. **EDGE**STITCH neck and armhole edges, keeping inner edges of facings free.

4. Stitch bodice together at sides. Press seam open.

5. On OUTSIDE, **EDGE**STITCH on both sides of seam.

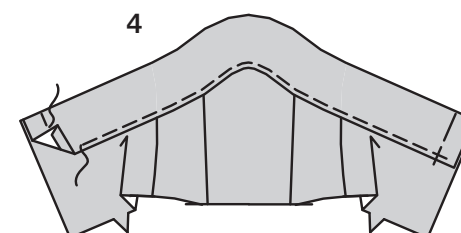
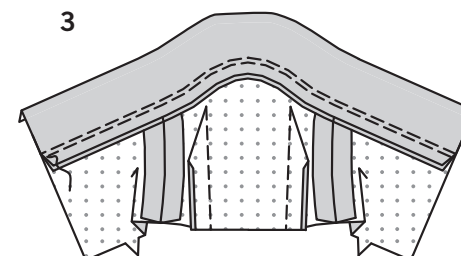
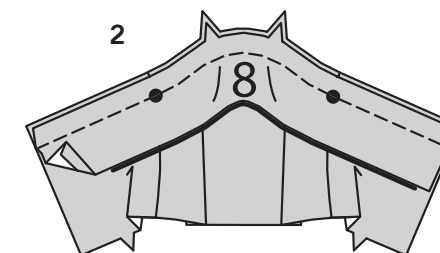
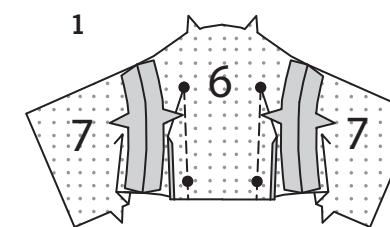
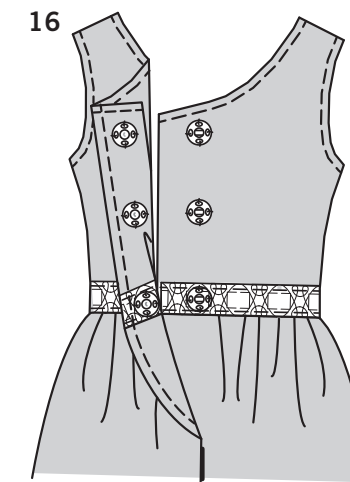
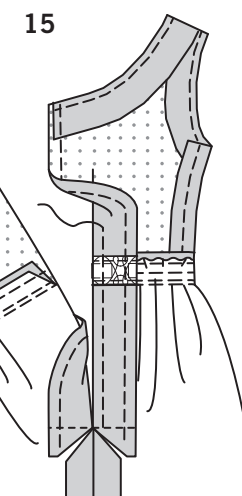
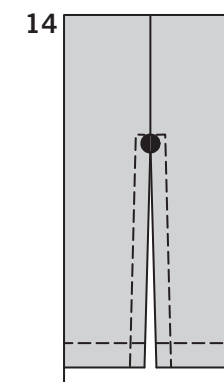
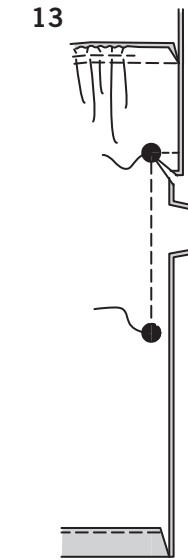
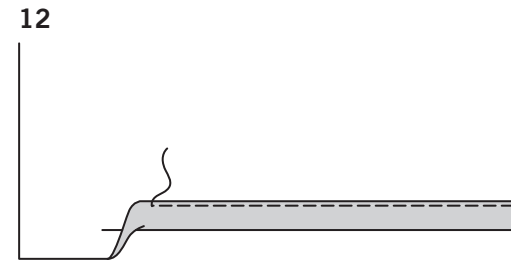
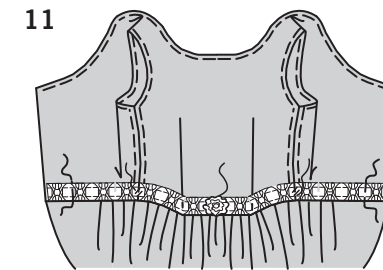
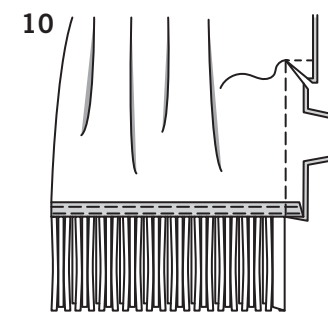
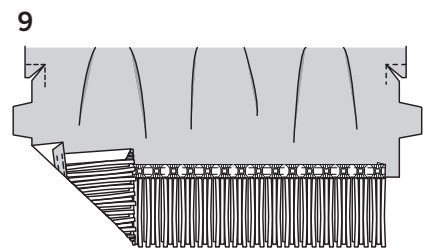
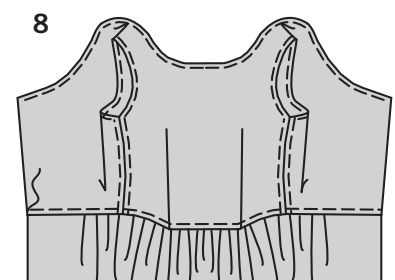
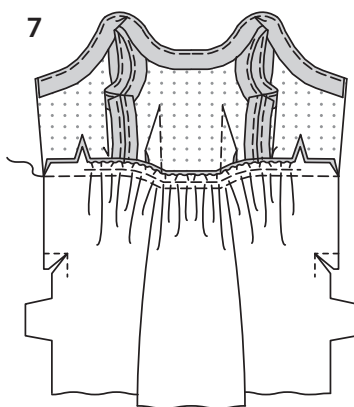
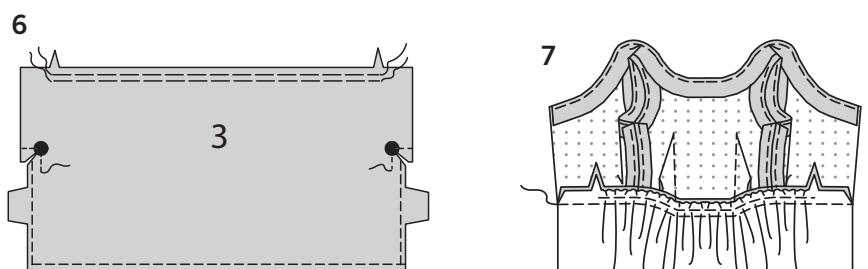
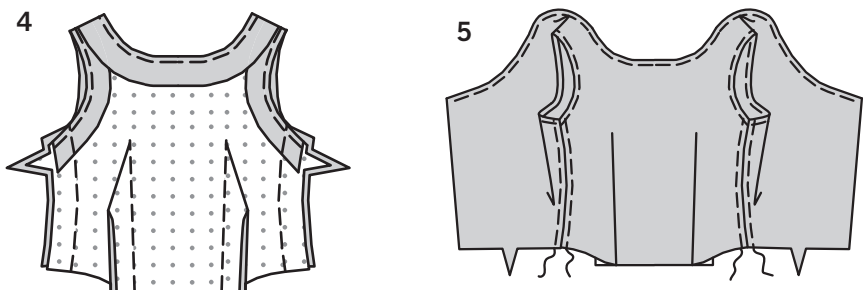
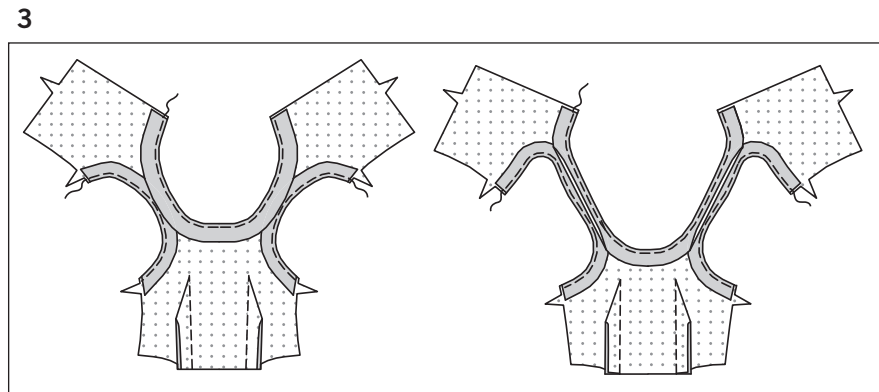
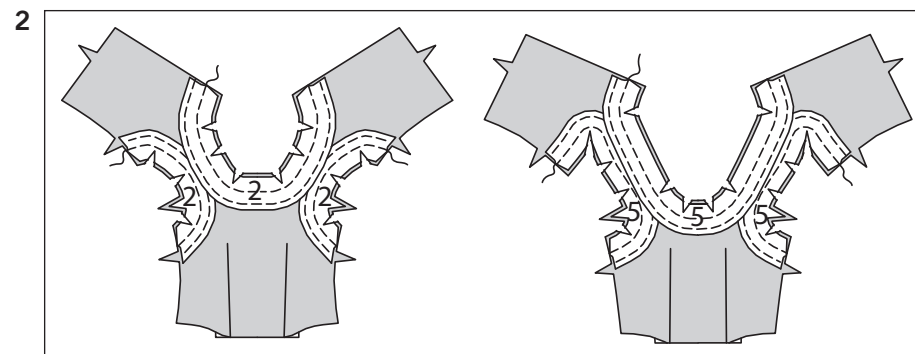
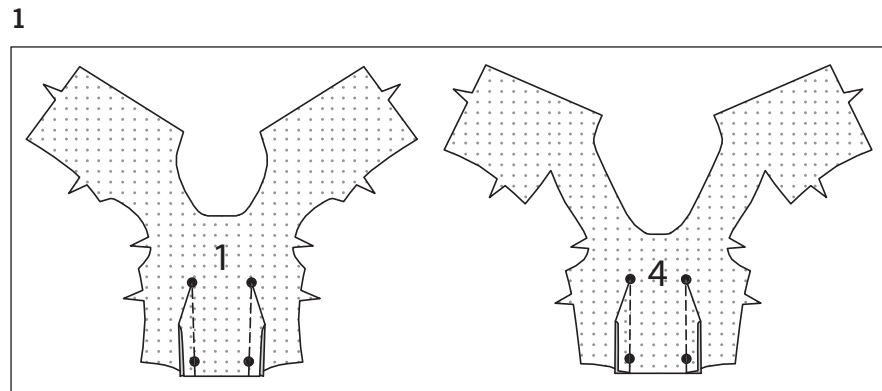
6. To reinforce center back seam of SKIRT (3), stitch along seamline, starting at notch, pivoting at large dot, as shown. Clip to large dot. **FINISH** back edges below clip. **GATHER** upper edge of skirt between notches. **FINISH** lower edges.

7. Pin skirt to bodice, RIGHT sides together, matching centers and notches. Adjust gathers evenly. Stitch. Press seam toward bodice.

8. On OUTSIDE, **EDGE**STITCH bodice.

VIEW A

9. Turn up 1/4" (6mm) hem on lower edge of dress. Press. On OUTSIDE, lap ribbon fringe 1/4" (6mm) over lower edge of dress, turning under ends to meet at center back seamline. Stitch close to upper edge of ribbon fringe. Stitch again 1/4" (6mm) below first stitching, catching in lower edge of dress.



10. Stitch center back seam below clip.

11. Pin 1/4" (6mm) wide ribbon to bodice having one long edge along waist seam and ends even with back opening edges. Baste ends. Tack ribbon to bodice at center front and side seams. Hand sew rosette to ribbon at center front.

VIEW B

12. Turn up 3/8" (1cm) hem on lower edge of dress. Press. Stitch hem in place close to inner edge of hem.

13. Stitch center back seam between large dots. Press seam open.

14. On OUTSIDE, **TOP**STITCH opening edges, squaring stitching 1/8" (3mm) above large dot.

SNAPS A, B

15. **FINISH** back opening edges. Turn in left back opening edge along center back. Press. Stitch left back opening edge 1/4" (6mm) from pressed edge.

16. On INSIDE, sew knob sections of snaps to left back opening edge, placing one at neck edge, one at waist seam and remaining snap centered between the two. Try on doll. Lap left back over right and use snaps to mark positions for socket sections of snaps on OUTSIDE of right back. Sew socket sections of snaps to markings.

GOWN C, D

BODICE

1. Fuse INTERFACING to WRONG side of BODICE FRONT (6) and BODICE BACK (7) blocks. Cut out front and back section from blocks. To make dart seams in bodice, on INSIDE, bring broken lines together, matching small dots. Stitch along broken line from raw edge to the point. Press darts toward side. Stitch bodice back to bodice front at sides.

2. Turn under 1/4" (6mm) on long unnotched edge of BAND (8). Press. On OUTSIDE, pin WRONG side of band to upper edge of bodice, matching notches, centers, and small dots to side seams, having back edges even. Stitch upper edge.

3. Turn seam allowances to INSIDE along stitching, lifting up band. Stitch seam allowances to bodice 1/8" (3mm) from seamline, keeping band free.

4. Turn band down again. Press. Stitch lower edge of band in place close to pressed edge. Baste ends.

SKIRT

5. To make pleat in SKIRT FRONT (9), on OUTSIDE, fold along solid lines. Press. Bring solid lines to broken lines. Press. Baste across raw edge.

6. To reinforce center back seam of SKIRT BACK (10) stitch along seamline, starting at notch, pivoting at large dot, as shown. Clip to large dot. **FINISH** back edges below clip. Pin skirt back sections to skirt front at sides, matching notches and large dots on left side. Stitch, leaving open below large dot on left side. Press seams open, continuing to press under left opening edges below dot.

7. On OUTSIDE, **TOPSTITCH** left side opening edges, squaring stitching 1/8"(3mm) above large dot.

8. Pin skirt to bodice matching notches, centers, side seams, and dart seams to pleats, having back edges even. Stitch. Press seam toward skirt.

9. On OUTSIDE, **EDGESTITCH** skirt close to seam.

10. Stitch center back seam in skirt below large dot.

11. Turn up 3/8"(1cm) on lower edge of dress. Press. Stitch hem in place 1/4"(6mm) from lower edge.

SNAPS

Apply snaps same as for DRESS A, GOWN B, eliminating center snap.

TRAIN D

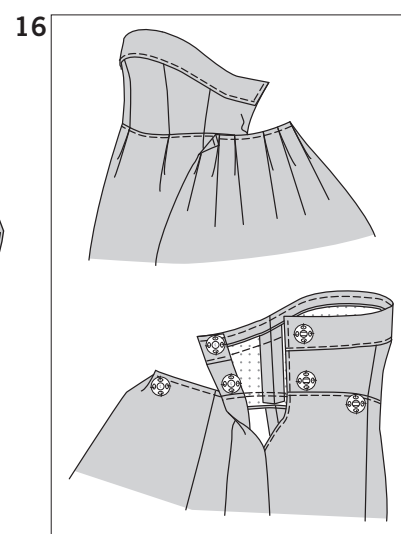
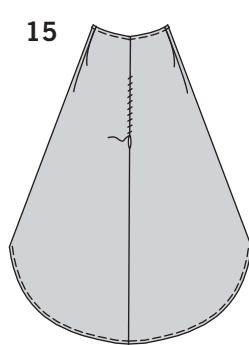
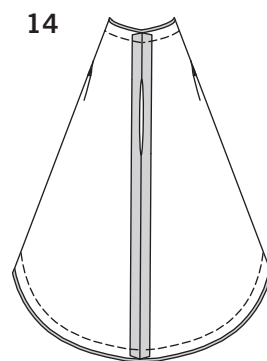
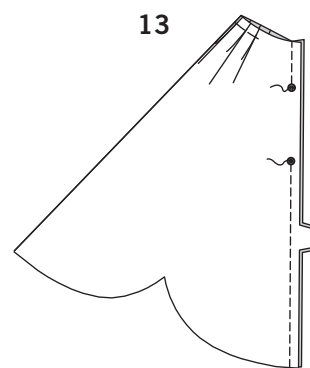
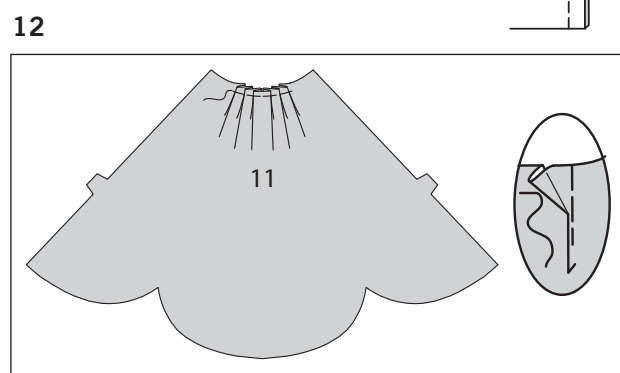
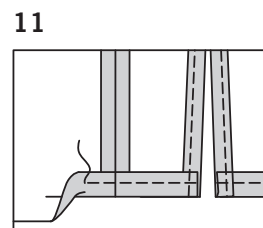
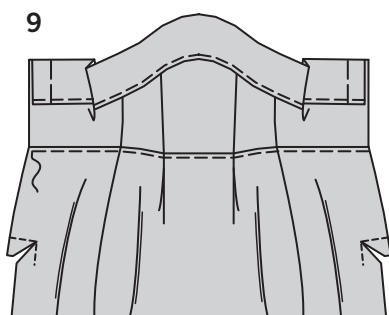
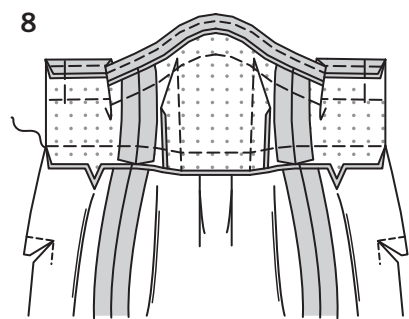
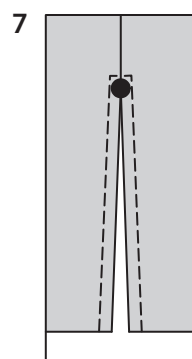
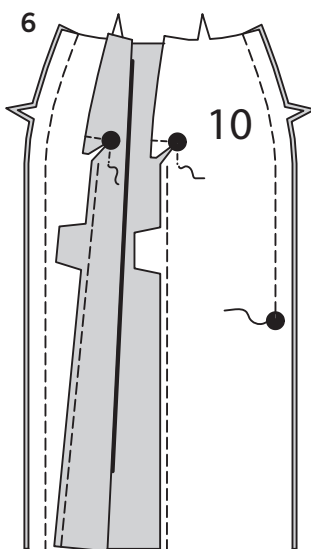
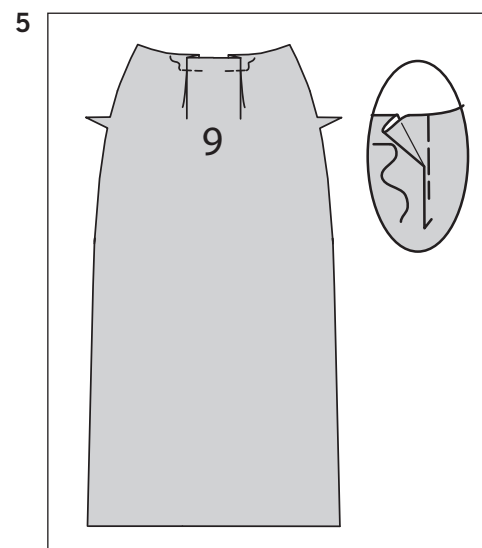
12. To make pleats in TRAIN (11), on OUTSIDE, fold along solid lines. Press. Bring solid lines to broken lines. Baste across raw edge.

13. Stitch center back seam, leaving open between small dots.

14. With RIGHT sides together, fold train along fold lines, bringing upper and lower edges together, matching center back to center front. Stitch upper and lower edges.

15. Turn RIGHT sides out through opening. Press. **SLIPSTITCH** opening closed. **EDGESTITCH** upper and lower edges.

16. On OUTSIDE, pin upper edge of train to back of dress along waist seam, matching center backs. Hand-sew left side of train in place stopping at center back. On INSIDE, sew knob section of snap to right side of train at upper edge. Try on dress. Lap train over right back and mark placement for socket section of snap. Sew socket section of snap to skirt back at marking.



DRESS AND OVERSKIRT E

NOTE: Appliques can be sewn on by hand or if using iron-on appliques, apply following manufacturer's instructions.
TIP – Cut apart and overlap larger appliques to create a pleasing design to fit the space.

BODICE

1. Fuse INTERFACING to WRONG side of BODICE FRONT (6) and BODICE BACK (7) blocks. Cut out front and back section from blocks. To make dart seams in bodice, on INSIDE, bring broken lines together, matching small dots. Stitch along broken line from raw edge to the point. Press darts toward side. Stitch bodice back to bodice front at sides.

2. Apply small applique to RIGHT side of bodice, centered over center front, keeping edges clear of seamlines.

3. **FINISH** lower un-notched edge of FACING (12). Pin facing to bodice, RIGHT sides together, matching notches, centers and small dots to side seams, having back edges even. Stitch upper edge.

4. **UNDERSTITCH** facing. Turn facing to INSIDE. Press. To hold facing in place, on OUTSIDE, **STITCH IN THE DITCH** of the side seam, across facing.

SKIRT

5. Apply large applique to RIGHT side of SKIRT FRONT (13), centered over center front, about 3/4"-1"(2cm-2.5cm) from lower edge. Keep edges clear of sides seamlines.

6. To reinforce center back seam of SKIRT BACK (10) stitch along seamline, starting at notch, pivoting at large dot, as shown. Clip to large dot. **FINISH** back edges of skirt below clip. Pin skirt back sections to skirt front at sides, matching notches. Stitch.

7. Pin skirt to bodice matching notches, centers, and side seams, having back edges even. Stitch. Press seam toward skirt.

8. On OUTSIDE, **EDGESTITCH** skirt close to waist seam.

9. Stitch center back seam in skirt below large dot.

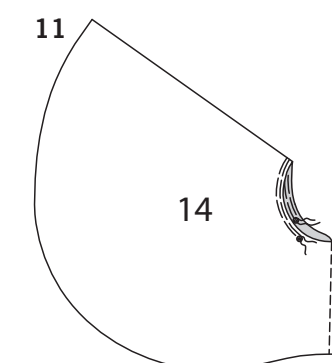
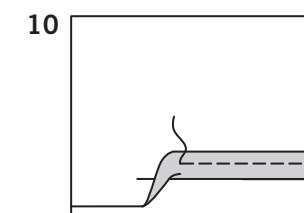
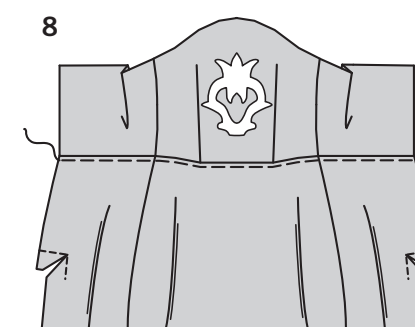
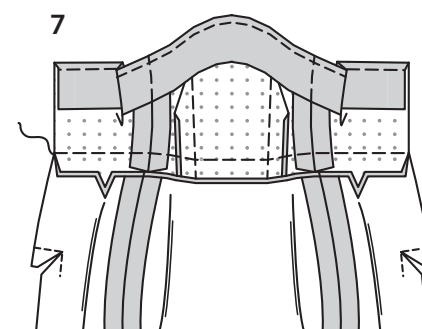
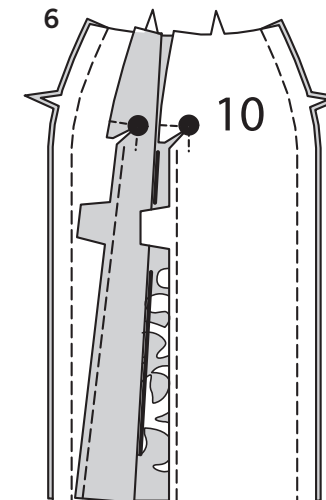
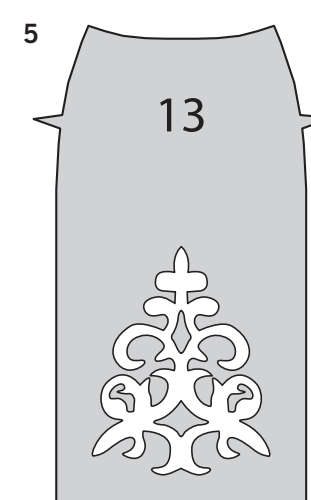
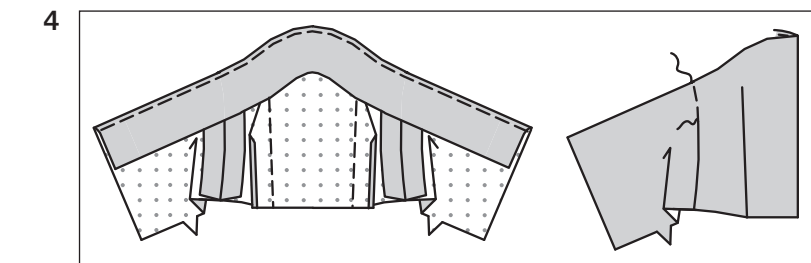
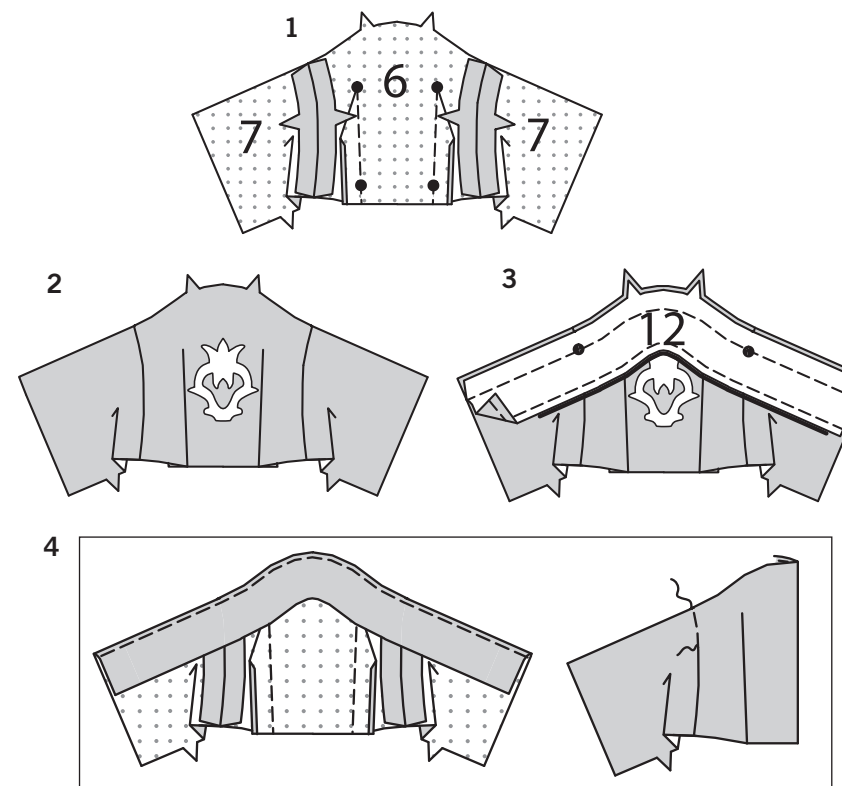
10. Turn up 3/8"(1cm) on lower edge of dress. Press. Stitch hem in place 1/4"(6mm) from lower edge.

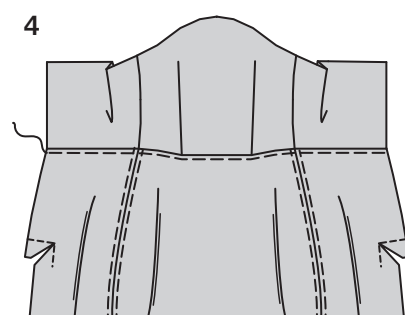
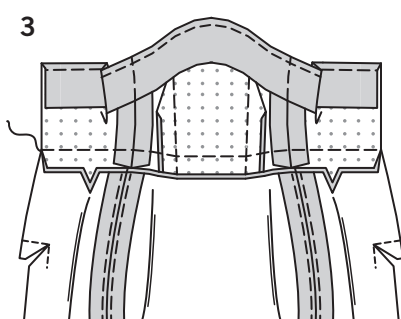
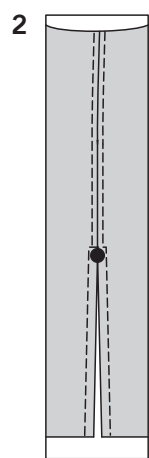
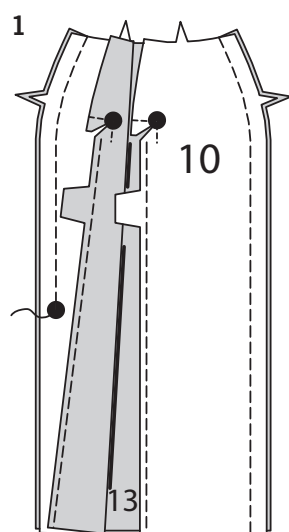
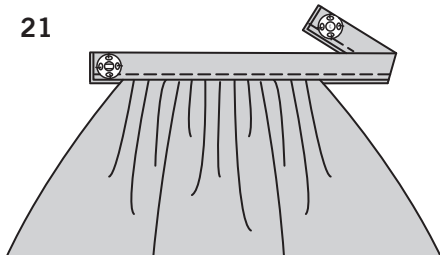
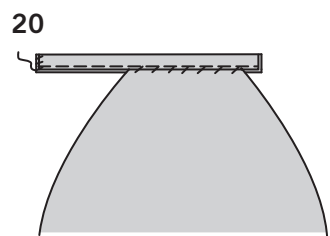
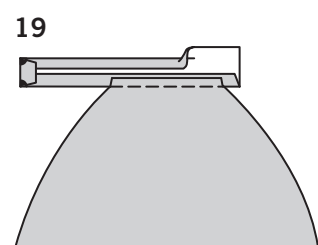
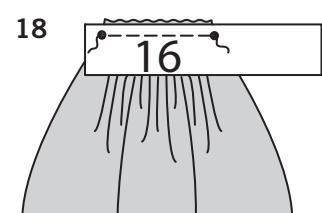
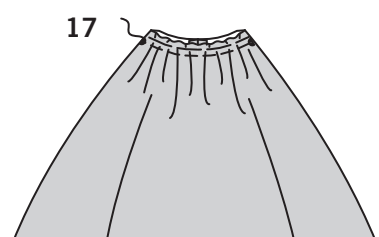
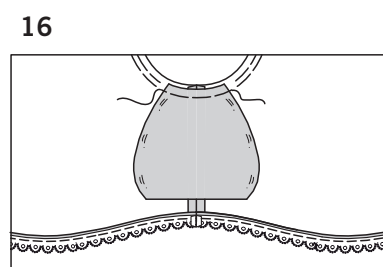
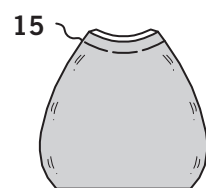
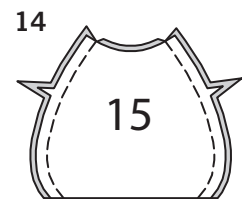
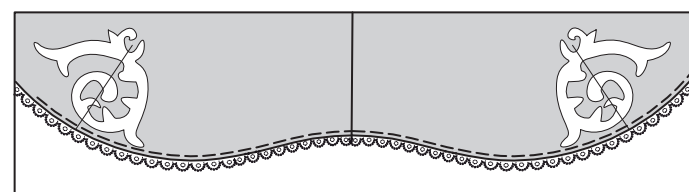
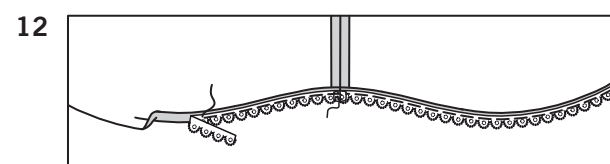
SNAPS

Apply snaps same as for DRESS A, GOWN B, eliminating center snap.

OVERSKIRT

11. For overskirt, **GATHER** upper edge of PANIER (14), between small dots. Stitch center back seam matching notches.





12. FINISH lower edge of overskirt. Turn under 1/4"(6mm) hem on lower edge. Press. Lap pressed edge of overskirt over straight edge of trim, turning under ends at seam. Stitch close to lower edge of overskirt. **SLIPSTITCH** ends.

13. Apply remaining appliques to **RIGHT** side of panier, centered over placement lines, evenly spaced above hem.

14. Fold **BUSTLE** (15) **RIGHT** sides together along foldline, matching notches, having raw edges even. Stitch, leaving upper edge open.

15. Turn **RIGHT** sides out. Press. Stuff lightly with poly fiberfill. Baste raw edges together.

16. On **INSIDE**, pin upper edge of bustle to upper edge of overskirt, matching center back to center back seam. Baste.

17. With **WRONG** sides together, fold overskirt along foldlines. Pin upper edges together, matching center backs. Adjust gathers evenly. Baste. Stitch through all layers.

18. On **OUTSIDE**, pin **WAISTBAND** (16) to upper edge of overskirt, **RIGHT** sides together, matching center backs and small dots. (Ends of waistband extends.) Stitch between small dots.

19. Press seam toward waistband, continuing to press under 1/4"(6mm) seam allowance on extending waistband. Turn under 1/4"(6mm) on free edge of waistband. Press. Press under 1/4"(6mm) on end of waistband with large dots.

20. Fold waistband, **WRONG** sides together, in half lengthwise. **SLIPSTITCH** pressed edge over seam and pressed edges together. **EDGESTITCH** waistband close to seam continuing stitching to ends.

21. On **OUTSIDE**, sew socket section of snap to left end of waistband. Try on dress. If adjustment is needed, turn under and sew right end of waistband the amount needed. On **INSIDE**, sew knob section of snap to right end of waistband.

GOWN AND JACKET F

BODICE

Make bodice same as **DRESS AND OVERSKIRT E**, disregarding instructions for applique.

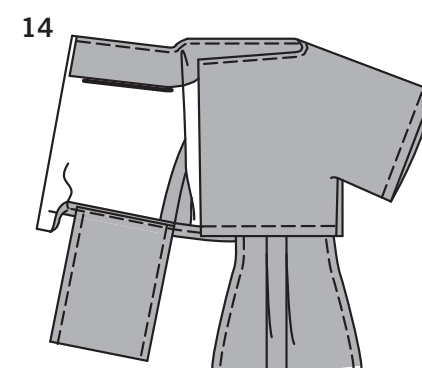
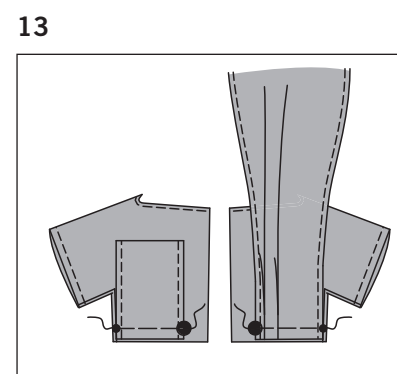
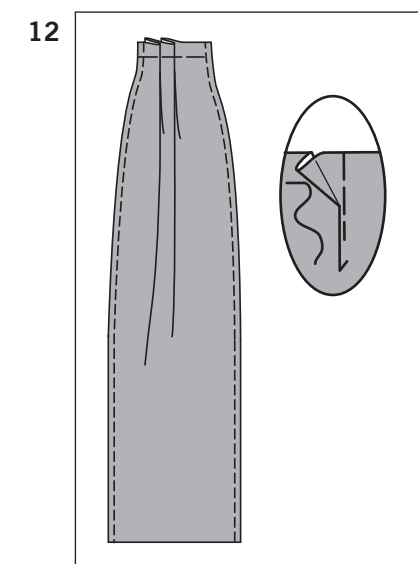
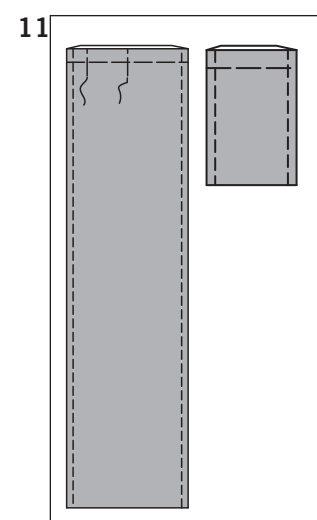
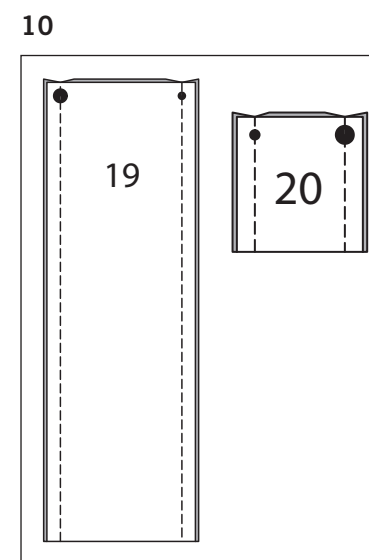
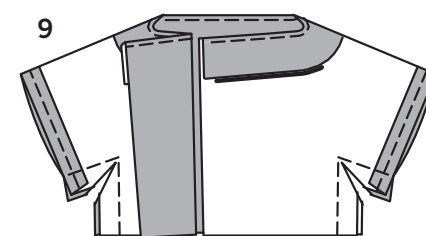
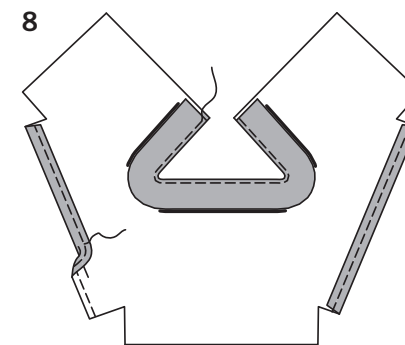
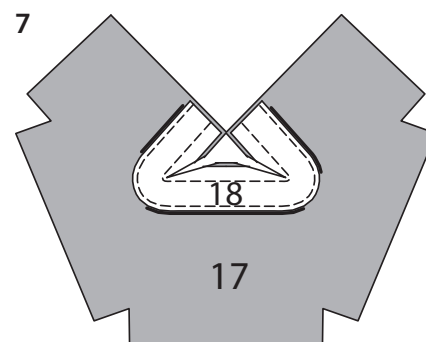
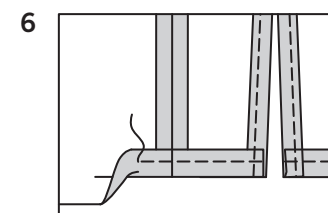
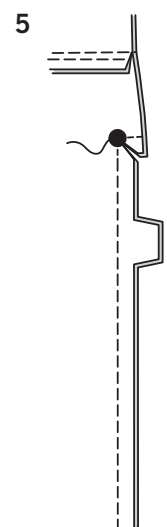
SKIRT

1. To reinforce center back seam of **SKIRT BACK** (10) stitch along seamline, starting at notch, pivoting at large dot, as shown. Clip to large dot. **FINISH** back edges below clip. Pin skirt back sections to **SKIRT FRONT** (13) at sides, matching notches. Stitch, leaving open below large dot on right side. Press seam allowances open, continue to press under opening edges on right side.

2. To keep seam allowances flat, on **OUTSIDE**, **EDGESTITCH** on both sides of side seams. **TOPSTITCH** right opening edges, squaring stitching 1/8"(3mm) above large dot.

3. Pin skirt to bodice matching notches, centers, and side seams, having back edges even. Stitch. Press seam toward skirt.

4. On **OUTSIDE**, **EDGESTITCH** skirt close to waist seam.



5. Stitch center back seam in skirt below large dot.

6. Turn up 3/8"(1cm) on lower edge of dress. Press. Stitch hem in place 1/4"(6mm) from lower edge.

SNAPS

Apply snaps same as for **DRESS A**, **GOWN B**, eliminating center snap.

JACKET

7. Cut out facing from **FACING** blocks (18). **FINISH** outer edges of facings. With **RIGHT** sides together and raw edges even, pin facings to jacket, matching centers. Stitch along stitching line. Clip inner corners.

8. UNDERSTITCH facing. Turn facing to **INSIDE**. Press. **EDGESTITCH** neck edge. **FINISH** lower edges of sleeves. Turn under 1/4"(6mm) hem on lower edge of sleeves. Press. **TOPSTITCH** hem in place.

9. With **RIGHT** sides together, stitch jacket side and underarm seams. Clip inward corners.

10. Fold **RIGHT TAIL** (19) and **LEFT TAIL** (20) along foldline, **RIGHT** sides together, matching small and large dots. Stitch, leaving upper edge open.

11. Turn **RIGHT** side out. Press. Baste raw edges together and along solid pleat lines on right tail. **TOPSTITCH** sides.

12. To make pleats in right tail, fold along solid lines. Bring solid lines to broken lines. Baste across raw edges.

13. On **OUTSIDE**, pin right tail to right back and left tail to left back, matching large and small dots. Baste.

14. FINISH lower edge of jacket. Turn under 1/4"(6mm) hem on lower edge, turning tails out. **TOPSTITCH** hem in place.

SNAPS

Apply snaps same as for **DRESS A**, **GOWN B**.