

**AUTHENTIC VINTAGE PATTERN REPRODUCTION**

INCLUDES ADDITIONAL SIZE OPTIONS AND CUTTING LAYOUTS

**HOW TO USE YOUR SIMPLICITY PATTERN**

- 1. SELECT THE PATTERN PIECES** for the view you are making. These pieces are listed in the box to the right.
- 2. PRESS THE PATTERN PIECES.**
- 3. COMPARE YOUR BODY MEASUREMENTS** with those on back of the envelope.
- 4. IF ALTERATIONS ARE NECESSARY,** they should be made in the pattern before placing on fabric. **(Caution:** In addition to body measurements, ease is allowed in the pattern for garment style and comfortable wearing.) Pattern pieces show where to make simple alterations such as:
  - To Shorten**  
Crease on printed line. Pin a pleat as deep as half the amount to be shortened. (i.e. 1/2" deep to shorten 1/2")
  - To Lengthen**  
Cut pattern on printed line. Place paper underneath. Spread pattern the necessary amount and pin to paper.

**For Children's Wear,** alter at lower edge except in shorts and slacks, etc., when crotch needs alterations, in which case alter above the crotch.

See the **Simplicity Sewing Book** for other alterations.

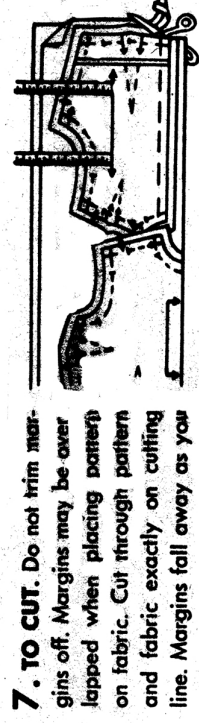
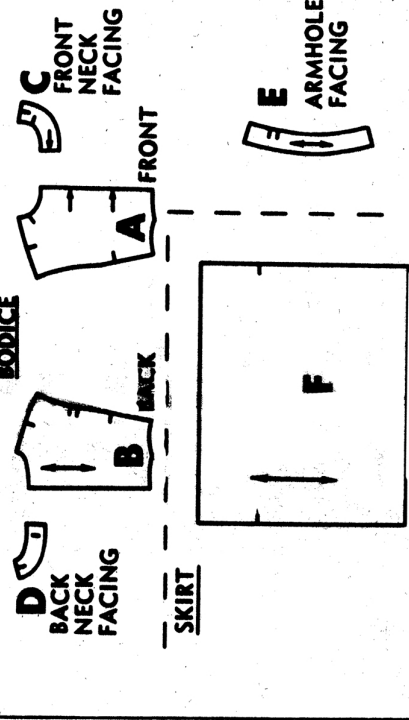
**5. PREPARE FABRIC.** Press creases out of fabric. Unless fabric is pre-shrunk, sponge or shrink before cutting.

**To Straighten End.** Snip selvage and pull

**LIST OF PIECES**  
SELECT YOUR PATTERN PIECES, SEE CUTTING LAYOUTS AND NOTES

DRESS - A,B,C,D,E,F

6 PIECES GIVEN



**7. TO CUT.** Do not trim margins off. Margins may be overlapped when placing pattern on fabric. Cut through pattern and fabric exactly on cutting line. Margins fall away as you cut.

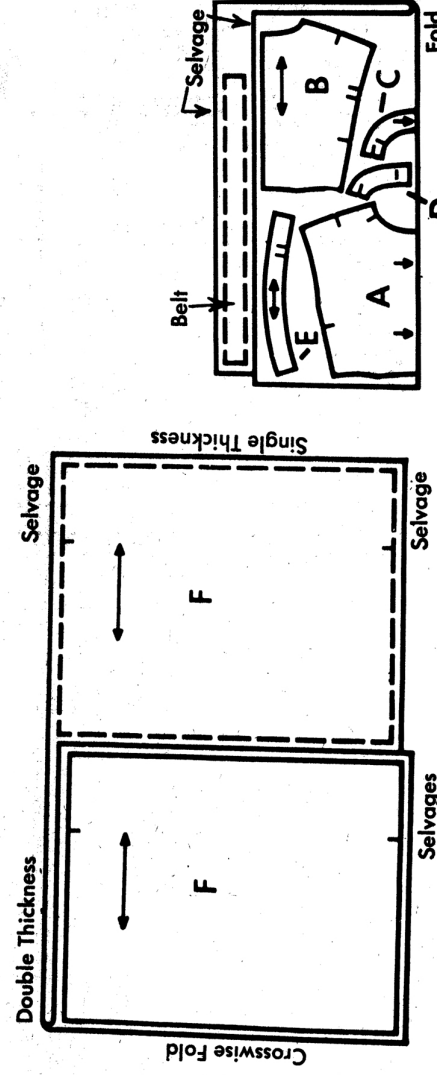
**SEWING DIRECTIONS**

- 1. READ INSTRUCTIONS** printed on each pattern piece as you work.
  - 2. WORK IN UNITS** according to the sewing directions.
  - 3. STAY-STITCHING** is a line of regular machine-stitching (in one thickness of fabric) on, or close to the seam line within the seam allowance. It prevents stretching.
- Stay-stitching will be shown **only** the first time a section of garment is illustrated in the instructions.

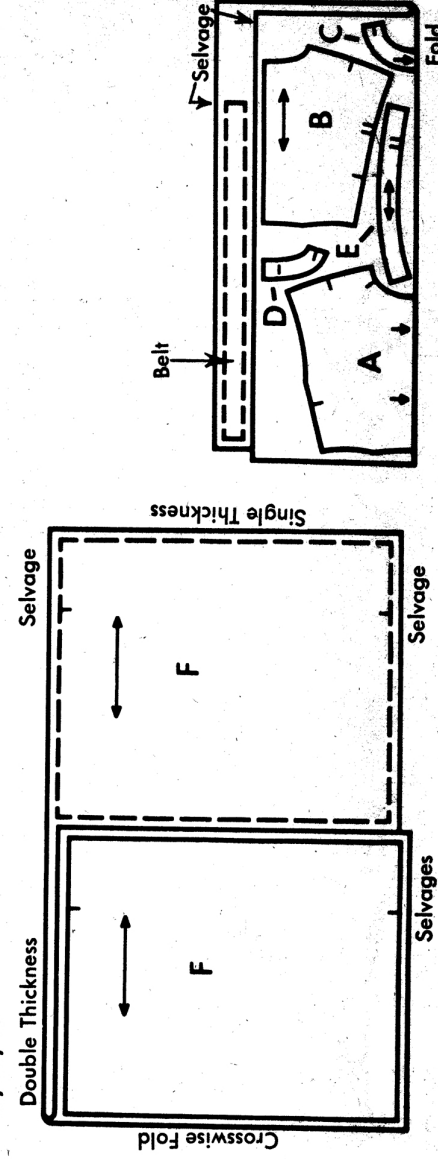
**Cutting Layouts**  
**Dress**

NOTE: BELT (Optional) Cut a straight strip of fabric, 1-3/4" wide and the waist measurement, plus 5".

**35" 36" Fabric Without Nap**  
Sizes 9, 11, 12, 13

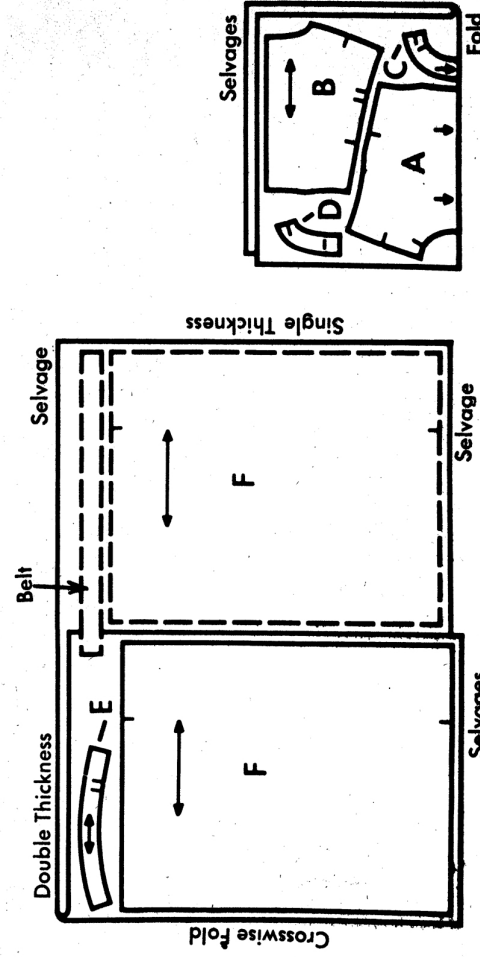


**35" 36" Fabric Without Nap**  
Sizes 14, 16, 18



**41" 42" Fabric Without Nap**  
Sizes 9, 11, 12, 13, 14

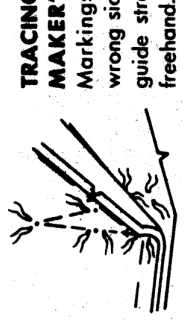
**44" 45" Fabric Without Nap**  
Sizes 9, 11, 12, 13, 14, 16



**B. MARK FABRIC.** Construction details **worst** be marked on the fabric. Mark center front and back with a clip at top and bottom.

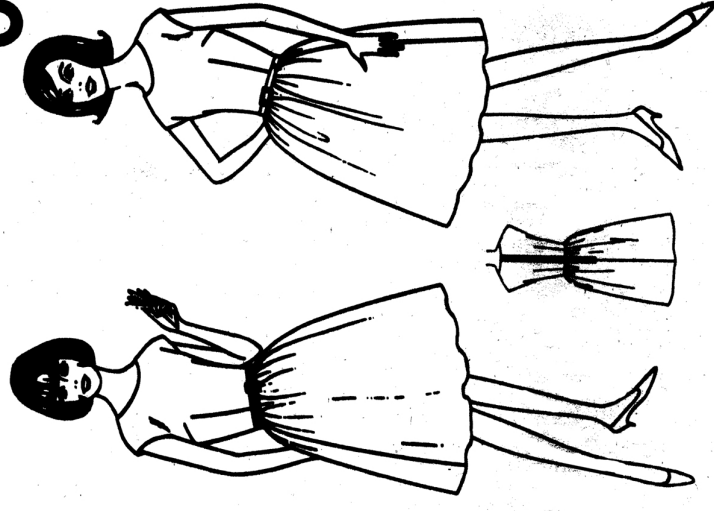
**Tailor's Tacks.** Use long double thread without knot. Take 2 small

stitches thru pattern and both fabric layers, leaving long loop. Cut top loops and remove pattern. Separate fabric, clip threads between fabric layers, leaving thread tufts on both layers.



**TRACING WHEEL AND DRESS-MAKER'S TRACING PAPER.** Markings should be made on wrong side of fabric. Use ruler to guide straight lines; mark curves freehand.

**Simplicity PRIMER**  
Guide for Cutting - Sewing - Detailed Dressmaking  
**6008**

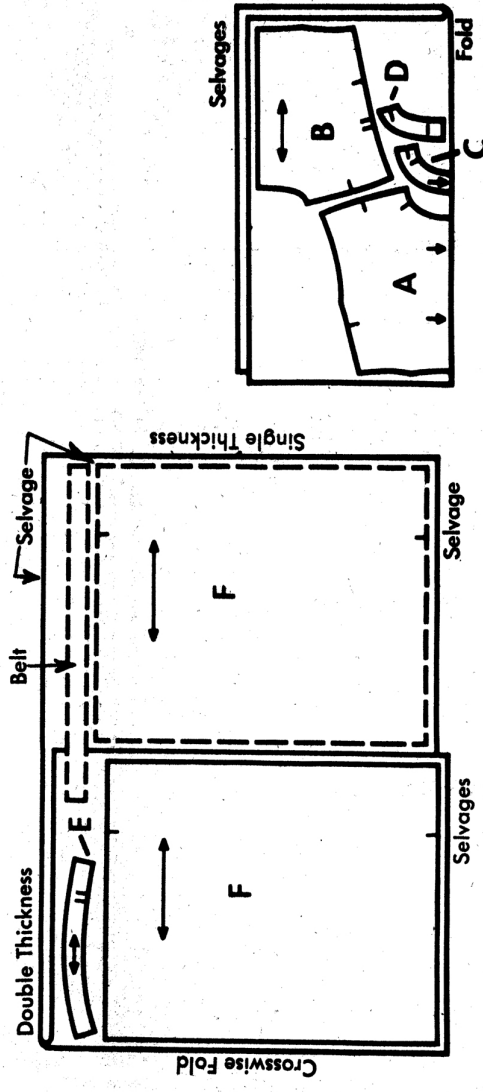


- 4. SEAM ALLOWANCE** is 5/8" unless otherwise stated.
- 5. TO JOIN SEAMS,** match notches with same numbers, 1 to 1, 2 to 2, etc.
- 6. STITCHING DIRECTIONS** are shown by arrows on printed seam lines. Press each seam before it is joined to another. Press in same direction as it was stitched. Note: We suggest machine-basting, using longest machine stitch.

**THE SIMPLICITY SEWING BOOK** featuring the **Simplicity Unit System of Sewing is now on sale.**

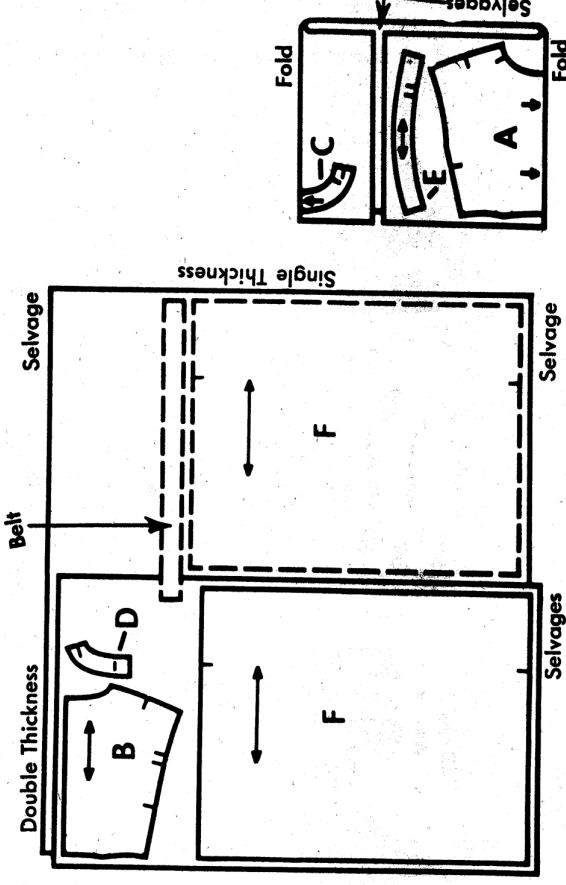
**41" 42" Fabric Without Nap**  
Sizes 16, 18

**44" 45" Fabric Without Nap**  
Size 18



**50" 54" Fabric With Or Without Nap**  
All Sizes

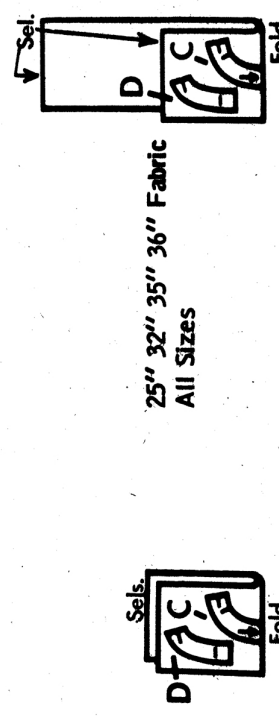
NOTE: For nap or one-way design fabric, cut 2 pieces of fabric; then place right sides together with nap or design running in the same direction.



**Neck Interfacing**

**18" Fabric**  
All Sizes

**25" 32" 35" 36" Fabric**  
All Sizes



For doubled fabric: lay one piece of tracing paper face up under fabric, a second piece, face down directly under pattern. Do not remove all pins.

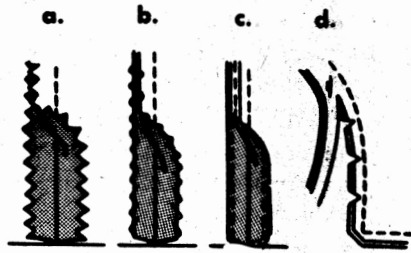
For single thickness: lay one piece of tracing paper face up under the wrong side of fabric. Do not remove pattern until ready to work on each piece.

# 6008

SHADED AREA IS RIGHT SIDE OF FABRIC

## SUGGESTED SEAM FINISHES

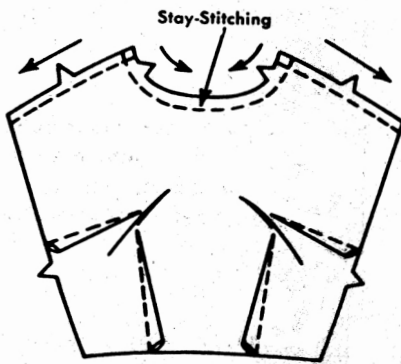
- a-Pink seams.
- b-Overcast separately.
- c-Turn in edges 1/8" and stitch separately.
- d-For enclosed seam, trim seam and corners; clip curves.



NOTE: When pinning interfacing sections in place, trim outer corners of interfacing diagonally as shown in drawings.

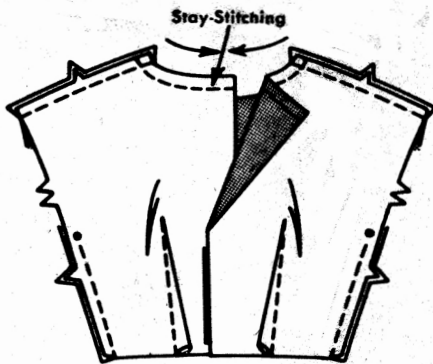
## JIFFY DRESS

### UNIT 1 - BODICE FRONT



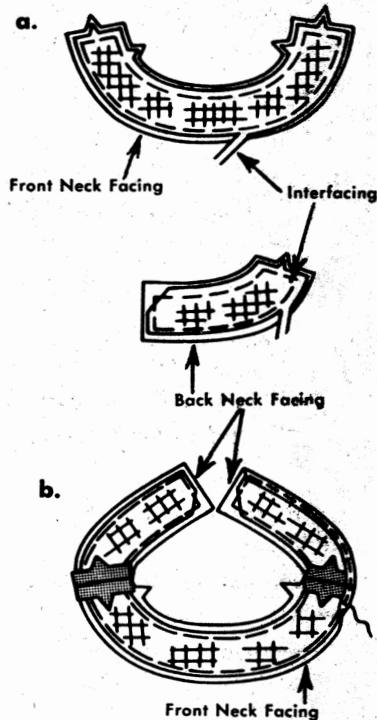
To make darts on INSIDE, fold along solid lines. Stitch along broken lines.  
Press underarm darts down and waistline darts toward center.

### UNIT 2 - BODICE BACK AND SEAMS



Make darts; press toward center.  
Join front unit to back unit at shoulder seams.  
Join side seams from medium dots to lower edge, as shown.

### UNIT 3 - FRONT AND BACK NECK FACINGS



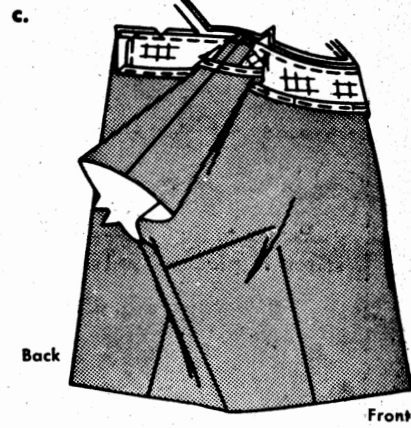
a-Machine-baste interfacing to WRONG side of facing sections 1/2" from raw edges.

Trim interfacing close to stitching.

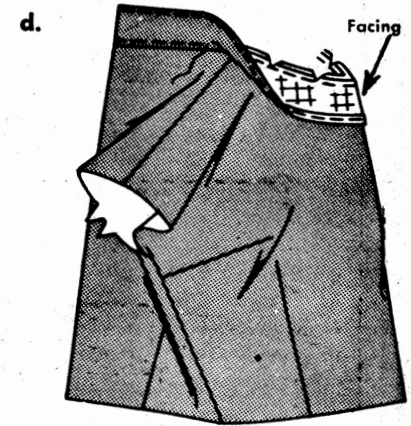
b-Join shoulder seams of facing sections.

Stitch under 1/4" on long un-notched edge.

c-With RIGHT sides together, pin facing to neck edge, matching centers and seams, easing bodice front neck edge to fit. Stitch neck edge. Trim seam; clip curves.

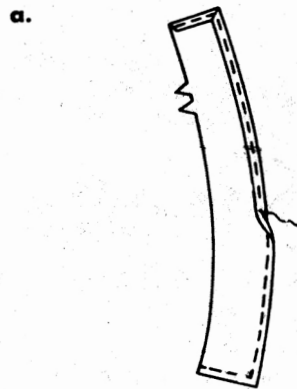


d-Press facing out; press seam toward facing. Facing side up, understitch close to seam line thru facing and seam.



### UNIT 4 - ARMHOLE FACINGS

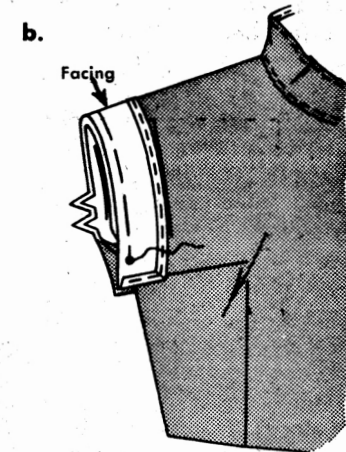
a-Stitch 1/4" from ends and long unnotched edge of armhole facing.



Press under edges along stitching and stitch.

b-With RIGHT sides together, pin facing to armhole edges, matching notches and medium dots.

Baste, between medium dots.

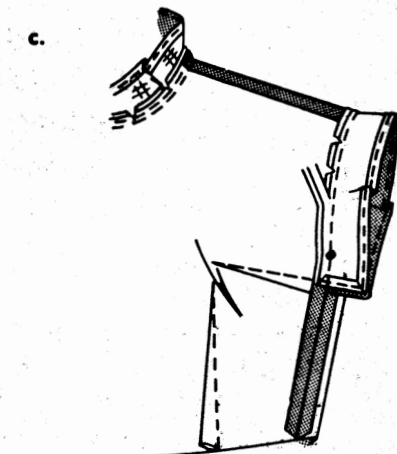


c-Open out facing.

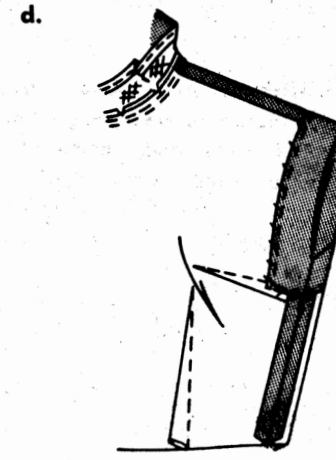
On INSIDE, with RIGHT sides together, pin remaining raw edges of facing to side seam allowance, having edges even.

Baste as close to side seam as possible, without basting thru to OUTSIDE of bodice. Stitch as basted.

Trim seam; clip curves.

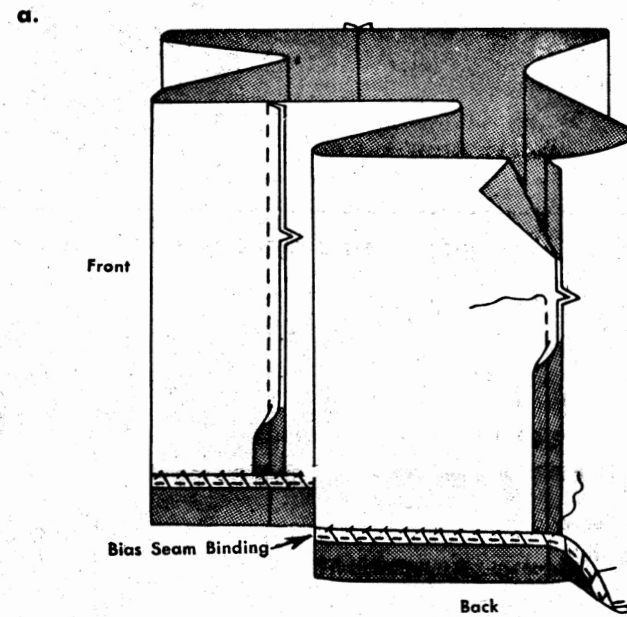


d-Press facing to INSIDE; slip-stitch in place.



### UNIT 5 - SKIRT

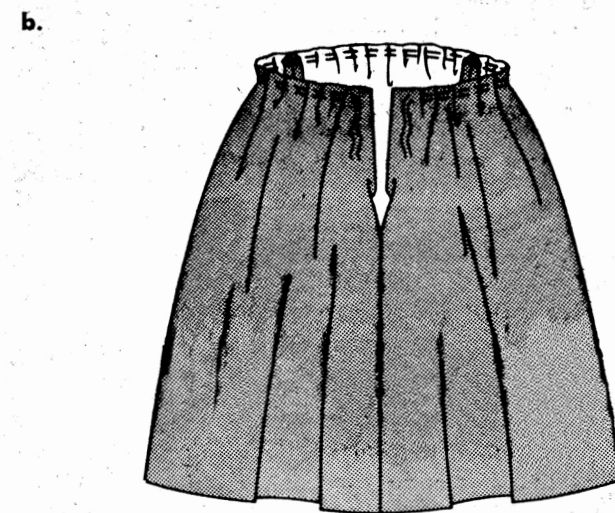
#### SEAMS AND HEM



a-Join seams of skirt sections, leaving one seam open above notch for center back opening.

Press up lower edge, forming hem. Stitch one edge of bias seam binding 1/4" over raw edge, (or stitch under 1/4" on raw edge). Slip-stitch hem in place.

#### GATHERS



b-Gather waistline edge of skirt, starting and ending gathers 1" from back opening edges, as shown.

To gather, stitch along seam line and 1/4" INSIDE seam line, using a long machine-stitch, with heavy thread on the bobbin.

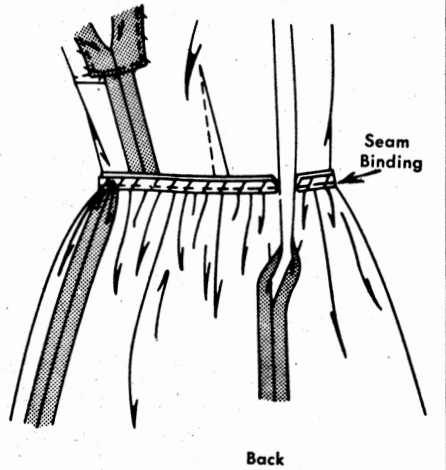
A gathering foot may be used.

### JOINING SKIRT UNIT TO BODICE UNIT

With RIGHT sides together, pin skirt to bodice, having back opening edges even, placing center of middle skirt section at center front and remaining seams at medium dots in bodice. Ad-gathers to fit; baste. Stitch seam.

To prevent waistline seam from stretching, stitch one edge of straight seam binding along seam on skirt side.

Trim seam and press up. Seam may be top-stitched.



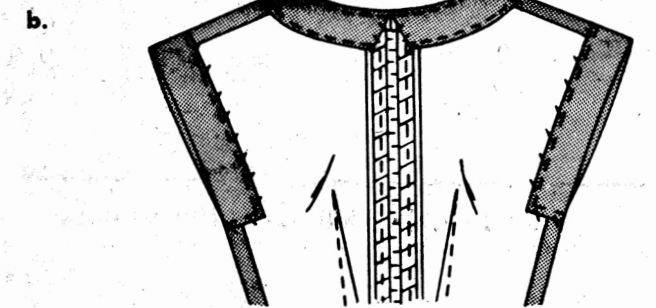
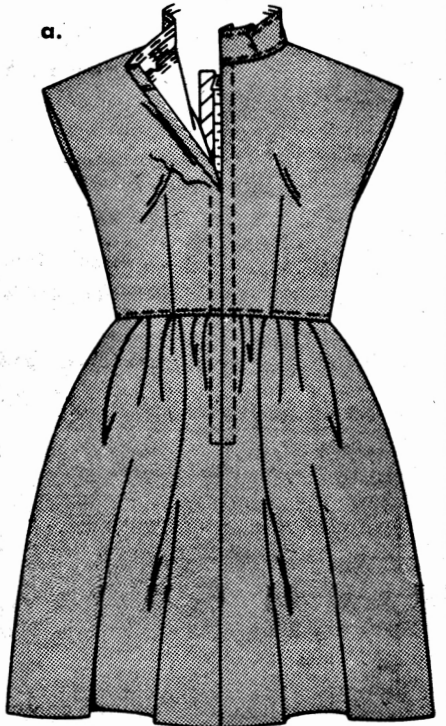
### ZIPPER

a-Press under seam allowance on center back opening edges.

Pin closed zipper under opening edges, placing tab end 1/2" below neck seam, having opening edges meet at center of zipper.

Trim tape of zipper below neck seam. Baste.

Using a zipper foot, stitch below neck seam.



b-Turn facing to INSIDE, turning under center back edges diagonally; slip-stitch to zipper tape.

Tack facing to shoulder seams.

Sew hook and eye at neck edge.

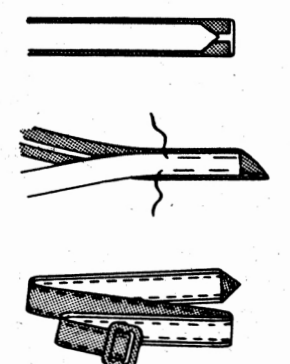
### FABRIC BELT

Point one end of belt backing. Press under 3/8" on long edges of belt fabric. Place fabric over WRONG side of backing.

Turn fabric over pointed end, as shown. Baste.

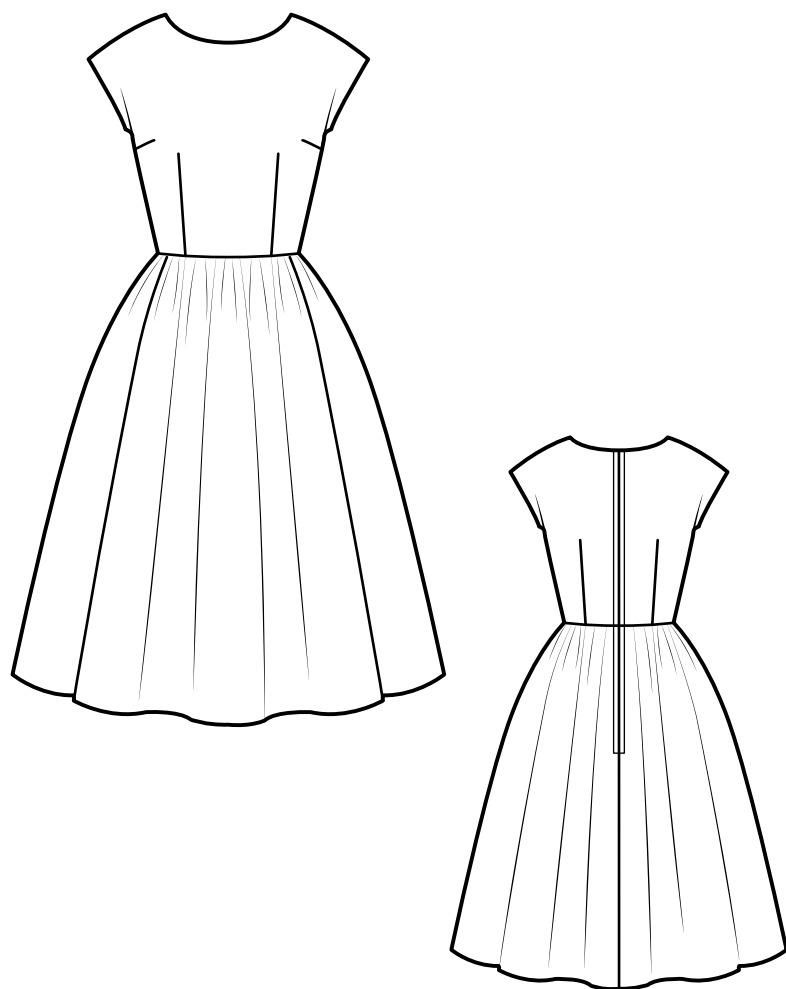
Stitch close to edges. Sew buckle to remaining end.

A purchased belt may be used.

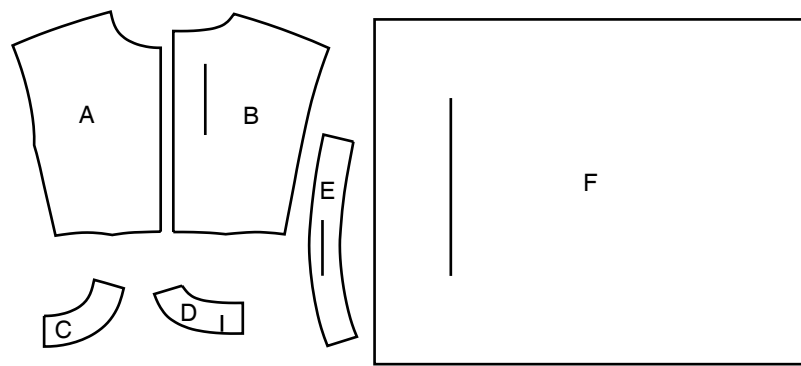


Thank you for purchasing this Simplicity pattern. We made every effort to provide you with a high quality product.

### SUPPLEMENTAL CUTTING LAYOUTS



6 PIECES



- A Bodice Front
- B Bodice Back
- C Front Neck Facing
- D Back Neck Facing
- E Armhole Facing
- F Skirt

## General Directions

### The Pattern

- SYMBOLS**
- ↔ GRAIN LINE Place on straight grain of fabric parallel to selvage
  - ⇄ PLACE SOLID LINE on fold of fabric.
  - - - CENTER FRONT OR BACK of garment.
  - ▽▽▽ NOTCHES
  - ○ DOTS
  - CUTTING LINE
  - == LENGTHEN OR SHORTEN LINES

SEAM ALLOWANCE: 5/8" (1.5cm) unless otherwise stated is included but not printed on MULTI-SIZE PATTERNS. Mark your size with colored felt tip pen. See chart on tissue for how to use MULTI-SIZE PATTERNS.

### ADJUST IF NEEDED

Make adjustments before placing pattern on fabric.

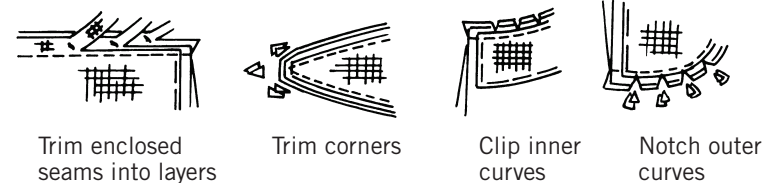
**TO LENGTHEN:** Cut pattern between lengthen or shorten lines. Spread pattern evenly, the amount needed and tape to paper.

**TO SHORTEN:** At lengthen or shorten lines, make an even pleat taking up amount needed. Tape in place.

When lengthen or shorten lines are not given, make adjustments at lower edge of pattern.

### Sewing

- SEW garment following **Sewing Directions**.
- PIN or machine-baste seams matching notches.
- STITCH 5/8" (1.5 cm) seams unless otherwise stated.
- PRESS seams open unless otherwise indicated clipping when necessary so seams will lie flat.
- TRIM seams to reduce bulk, as shown below.



### Cutting/Marking

#### BEFORE CUTTING:

PRESS pattern pieces with a warm dry iron. PRE-SHRINK fabric by pre-washing washables or steam-pressing non-washables.

CIRCLE your cutting layout.

PIN pattern to fabric as shown in Cutting Layouts.

• FOR DOUBLE THICKNESS: Fold fabric with RIGHT sides together.

• FOR SINGLE THICKNESS: Place fabric RIGHT side up.

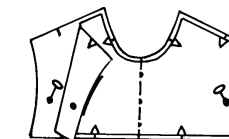
• FOR PILE, SHADED OR ONE WAY DESIGN FABRICS: Use "with nap" layouts

#### AFTER CUTTING:

Transfer markings to WRONG side of fabric before removing pattern. Use pin and chalk method or dressmaker's tracing paper and wheel.

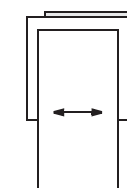
#### To Quick Mark:

- Snip edge of fabric to mark notches, ends of fold lines and center lines.
- Pin mark dots.

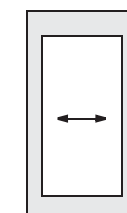


### SPECIAL CUTTING NOTES

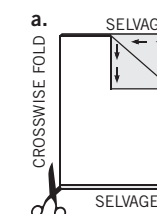
★ If layout shows a piece extending past fold, cut out all pieces except piece that extends.



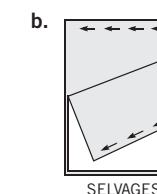
Open out fabric to single thickness. Cut extending piece on RIGHT side of fabric in position shown.



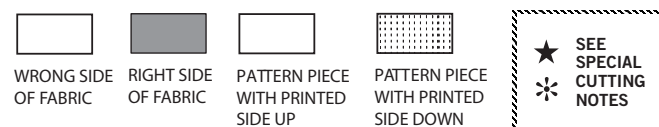
✱ Mark small arrows along both selvages indicating direction of nap or design. Fold fabric crosswise with RIGHT sides together, and cut along fold (a).



Turn one fabric layer around so arrows on both layers go in the same direction. Place RIGHT sides together (b).



## Cutting Layouts



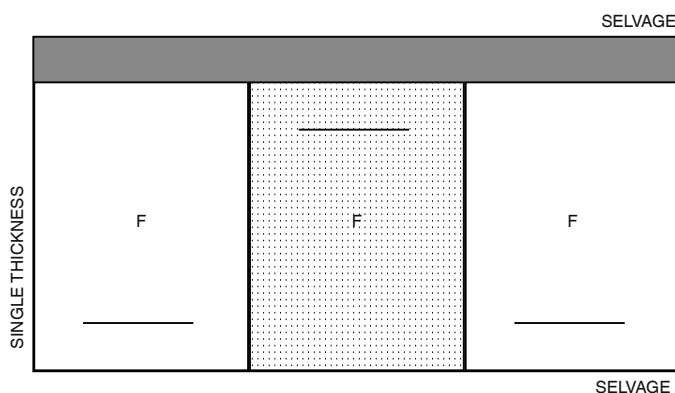
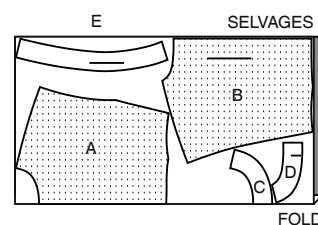
POSITION OF PATTERN PIECES MAY VARY SLIGHTLY ACCORDING TO YOUR PATTERN SIZE

### DRESS

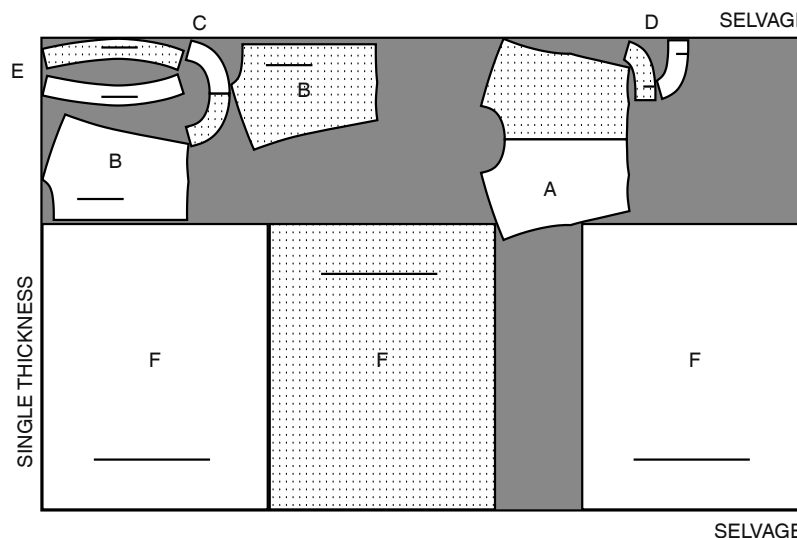
USE PIECES A B C D E F

**NOTE: BELT (OPTIONAL):** CUT A STRAIGHT STRIP OF FABRIC, 1-3/4" (4CM) WIDE AND THE WAIST MEASUREMENT, PLUS 5" (13CM).

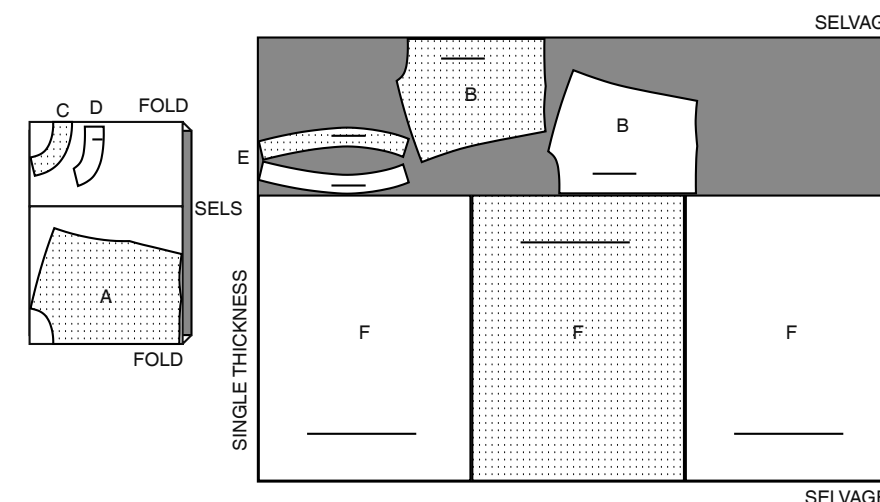
45" (115CM) WITH NAP ALL SIZES



60" (150CM) WITH NAP SIZES 6 8 10 12



60" (150CM) WITH NAP SIZES 14 16 18 20 22 24



### INTERFACING OPT. USE PIECES C D

20" (51CM) WITHOUT NAP ALL SIZES

