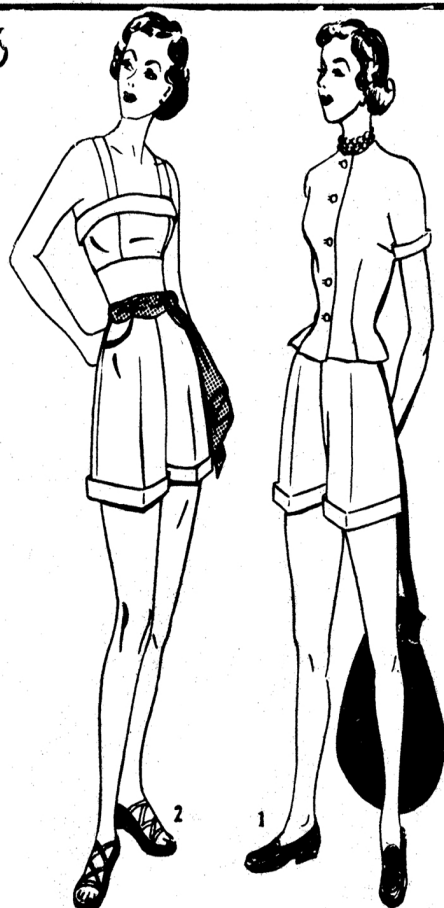


2825

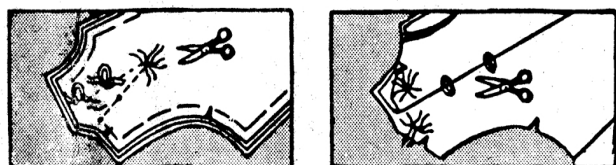


BEFORE CUTTING THIS GARMENT. When necessary, pre-shrink fabric. Mark cutting diagram related to style, size, and width of fabric.

PIN PATTERN ON FABRIC ACCORDING TO GRAIN LINES.

CUTTING DIAGRAMS... When single fabric is indicated, place pattern on right side of fabric. For folded fabric, have right sides face each other. Broken lines indicate: duplicate pieces or where half pattern is given, the shape of whole piece... When cutting sleeves, etc., on single fabric, reverse pattern for second piece.

BEFORE REMOVING PATTERN. Snip notches or mark notches. Make tailor tacks thru marking lines and ●'s. Cut top loops before removing pattern. Separate two thicknesses of fabric and clip threads between layers. Mark lines and ●'s with tailor's chalk if desired. Run bastings at center front and back. Do not remove center bastings until garment is finished.



Simplicity Primer

GUIDE FOR CUTTING AND SEWING... DETAILED DRESSMAKING

The SIMPLICITY SEWING BOOK

Gives complete instructions and illustrations on all phases of sewing. It is a sewing tool as necessary as your scissors or needle.

SEAM ALLOWED

5/8" on all edges unless otherwise directed.

MARKS USED

Notches.....Joining of seams
↔.....Straight thread of fabric

CUTTING NOTES

When pattern piece extends beyond fold of fabric, open fabric before cutting; place pattern on right side of fabric in position shown.

STYLE 1 AND 2

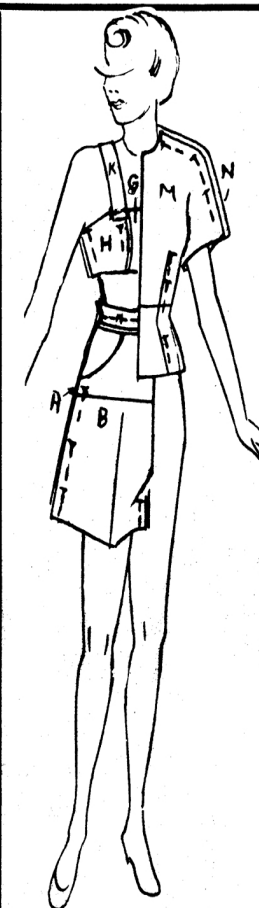
BIAS STRIPS--Cut of remnants.

BELT CARRIERS--Cut of remnants.

STYLE 1

JACKET INTERFACING--Cut a strip the length of jacket front and 2" wide.

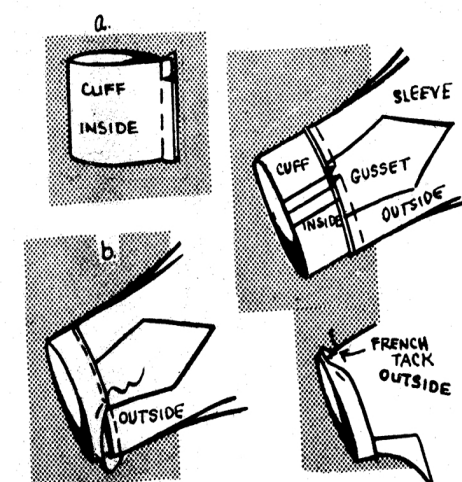
PATTERN ADJUSTMENT



TO LENGTHEN--
Cut across pattern, pin it to strip of paper.



TO SHORTEN --
Pin waist across pattern.

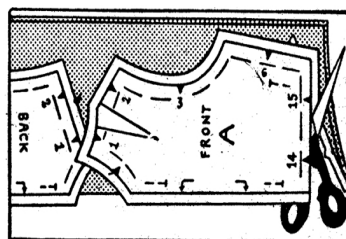


21-CUFFS--a-Join ends of cuff. Join RIGHT side of cuff to WRONG side of sleeve, having seam line of cuff at center of gusset.
b-Turn under 5/8" on remaining raw edge and top-stitch over seam. Turn cuff up over seam. French-tack to shoulder seam.

PIECES USED

STYLE 1-A, B, C, D, E, F, G, H, K, L, M, N, P, R, S

STYLE 2-A, B, C, D, E, F, G, H, K, L



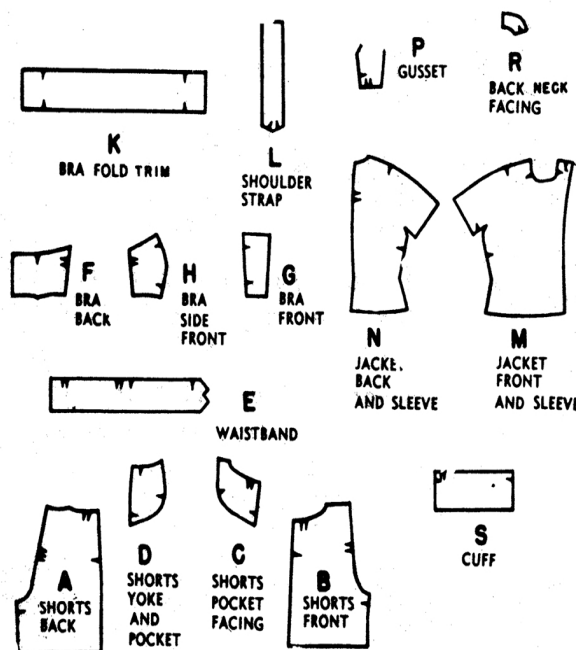
HEM ALLOWED

JACKET-1-1/2"

TURN UP

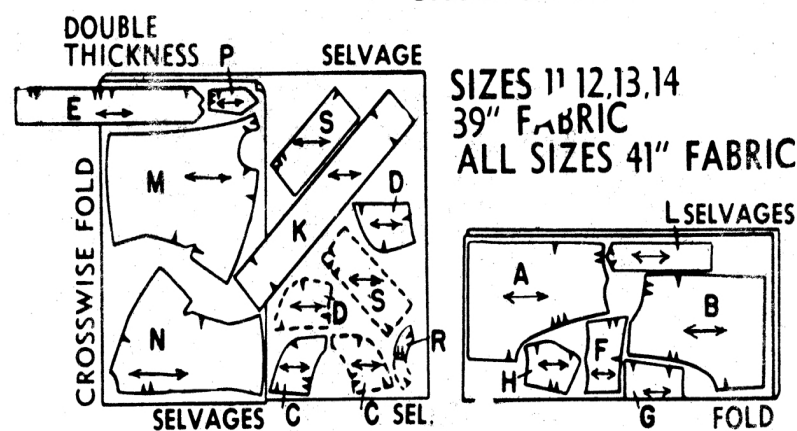
Leave margins on pattern pieces. Lay out pattern, overlapping all margins. Cut pattern and fabric along printed cutting line. Margin is removed as you cut thru pattern and fabric.

15 PIECES GIVEN

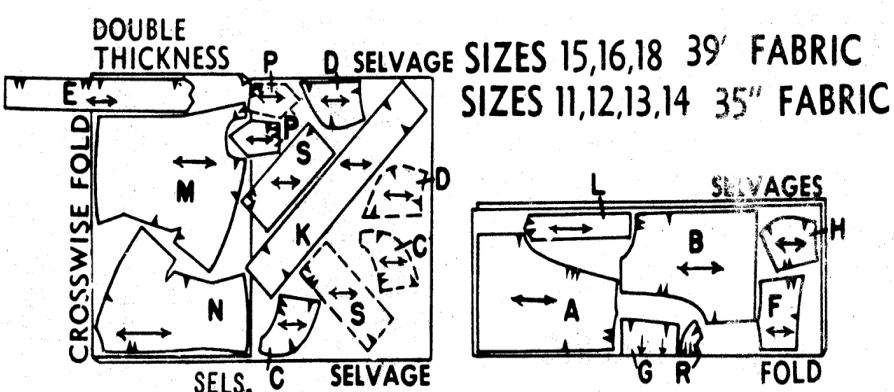


CUTTING DIAGRAMS FOR FABRIC WITHOUT NAP OR ONE WAY DESIGN UNLESS OTHERWISE STATED

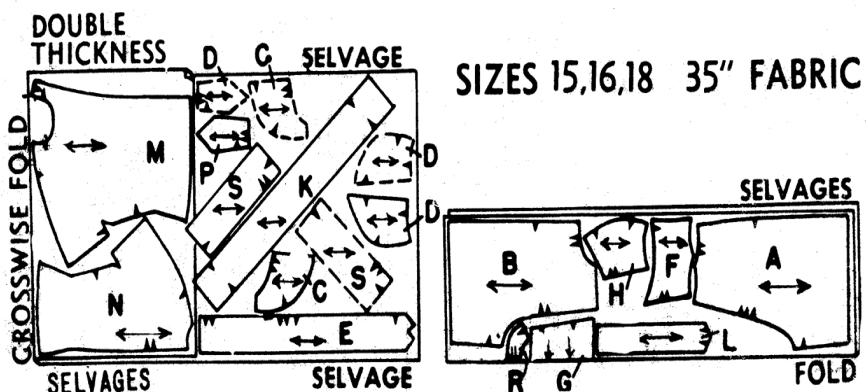
STYLE 1 SHORTS BRA AND JACKET



SIZES 11,12,13,14
39" FABRIC
ALL SIZES 41" FABRIC

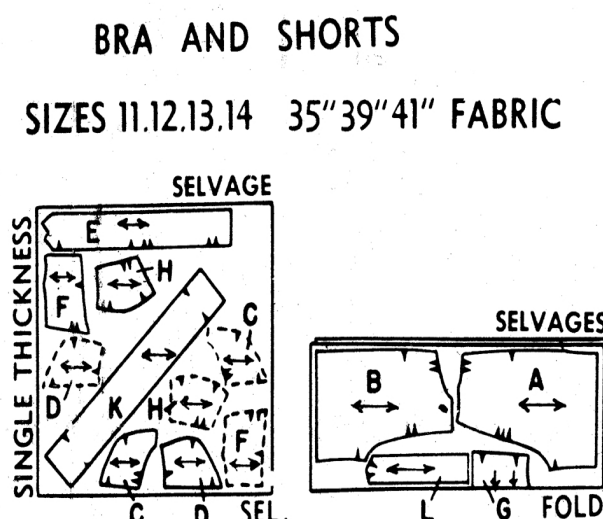


SIZES 15,16,18 39" FABRIC
SIZES 11,12,13,14 35" FABRIC



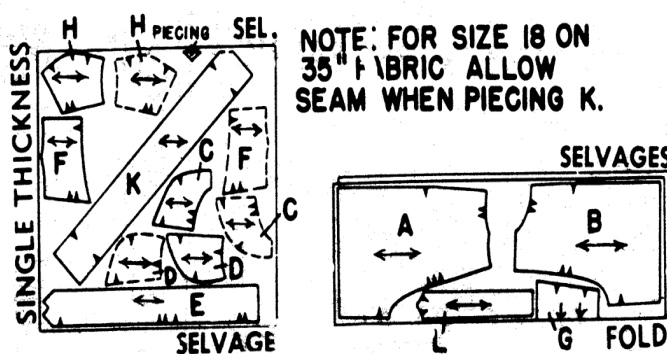
SIZES 15,16,18 35" FABRIC

STYLE 2 BRA AND SHORTS



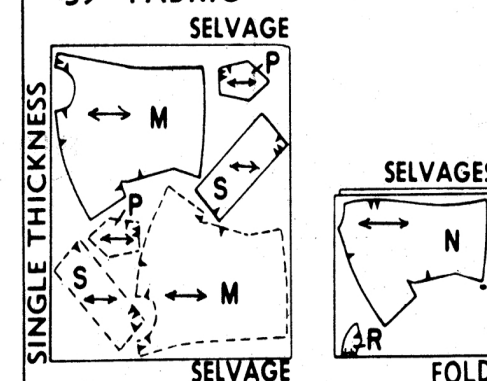
SIZES 11,12,13,14 35" 39" 41" FABRIC

SIZES 15,16,18 35" 39" 41" FABRIC

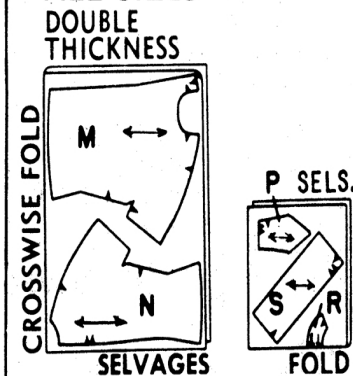


NOTE: FOR SIZE 18 ON 35" FABRIC ALLOW SEAM WHEN PIECING K.

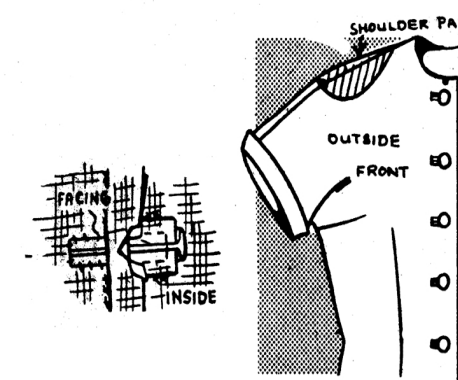
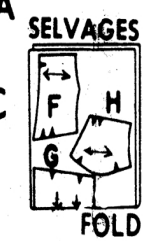
SEPARATE JACKET SIZES 11,12,13,14,15 39" FABRIC



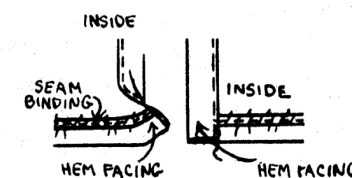
SIZES 16,18 39" FABRIC
ALL SIZES 35" FABRIC



LINING FOR BRA ALL SIZES 35" 39" FABRIC



22-FINISHING--To finish underside of bound buttonholes, baste facing around buttonholes; slash facing and clip to corners. Hem the edges to buttonholes. Lap RIGHT front over LEFT, matching centers and sew buttons under buttonholes.
SHOULDER PADS--Place center of pad along shoulder seam, having end of pad at medium ●. Tack to shoulder seam.



23-LOWER EDGE--Pull out hem facing. Turn up lower edge; baste. Finish raw edge with seam binding, easing in fullness; slip-stitch in place. If desired, stitch under raw edge, slip-stitch in place, easing in fullness. Slip-stitch hem-facing over hem.

2825
Note →

Match NOTCHES to join seams.
SEAM ALLOWANCE
3/8 inch allowed on all edges. Baste seams.
Try on before stitching.

AFTER STITCHING EACH SEAM:—
Press seams open unless otherwise instructed;
for enclosed seams — facings, collars, etc., trim
seam, clipping curves and corners.

LONG BIAS SEAMS (as in a skirt) — allow them to hang a day.
If seams draw, clip the basting, and allow to drop; stitch.

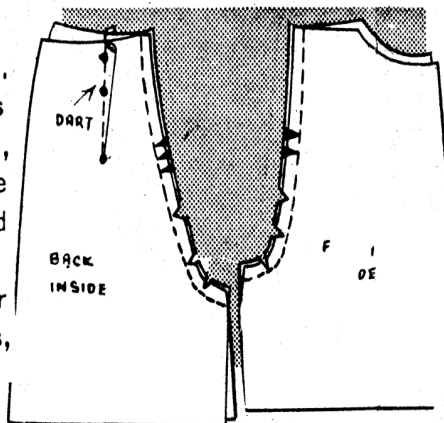
SHORT BIAS OR CURVED EDGES: — To prevent stretching,
run a line of stitching 3/8 inch from the edges.

SHOULDER PADS must be pinned in place for all
fittings and sewed in place when garment is finished.

Make **GATHERS** by machine using long stitch.

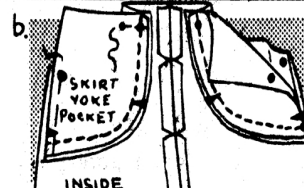
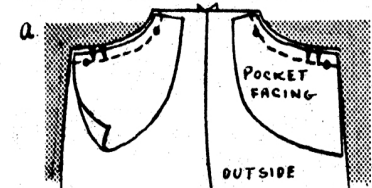
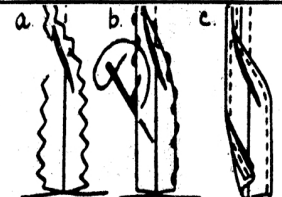
SHORTS STYLE 1 AND 2

1-DARTS--At back waistline.
From **INSIDE**, bring small •'s
together. Baste thru •'s,
tapering to nothing at single
•. Stitch. Press darts toward
center back.
CENTER SEAMS--Join center
front and center back seams,
clipping curves.

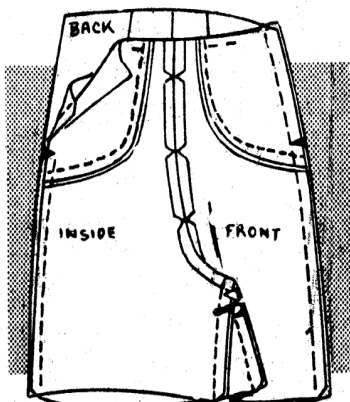


SEAM FINISHES

- a-Pink seams.
- b-Overcast separately.
- c-Turn in edges 1/8" and
stitch separately.



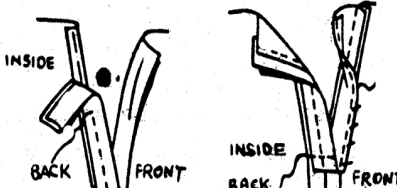
2-POCKETS--a-With **RIGHT** sides together, join pocket facing to
upper edge of shorts front, matching small •'s, as shown.
Trim seam and turn pocket facing to **INSIDE**.
b-With **RIGHT** sides together, join pocket facing to shorts
yoke and pocket along curved edge, raw edges even, as shown.
Turn pockets toward front. Baste side and upper edges in
place, matching small •'s.



3-SEAMS--Join side seams, leav-
ing **LEFT** side open above
notch, catching in yoke and
pocket. Join inner leg seam,
clipping curve.

4- SIDE OPENING

SNAP FASTENING--Cut bias
strips 1-1/2" wide for front
and 2" wide for back and 1/2"
longer than opening. Baste,
under 1/2" on back edge of
opening. Fold wide strip in half lengthwise; place under
basted edge, raw edges even; stitch. Stitch under one edge
of remaining strip. Join to front edge in 1/2" seam. Turn
front edge to **INSIDE** along seam line, hemming facing in
place. Lap front over back and sew lower ends together. Sew
snaps in place after waistband is finished.



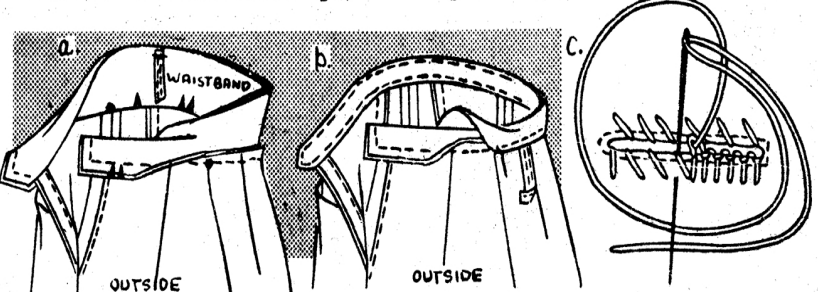
SLIDE FASTENER--See instructions given with fastener.

5-BELT CARRIER (OPTIONAL)

a-Cut
4 strips of fabric 1" wide and 3-1/4" long. Turn in 1/4" on
long edges and one end; baste. Fold belt carriers in half
lengthwise, baste edges even. Top-stitch along edges.



b-Place belt carriers at lower
small •'s on waistband on
OUTSIDE on unnotched edge,
raw edges even; baste.

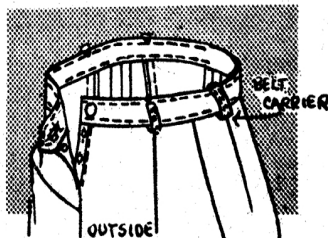


6-WAISTBAND--a-Join **RIGHT** side
of waistband to **WRONG** side
of shorts, matching centers,
with **RIGHT** sides together,
fold the waistband in half
lengthwise; stitch the ends; turn.

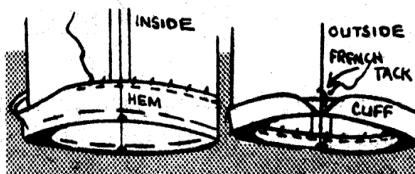
b-Turn under remaining raw
edge of waistband and top-
stitch over seam, having belt carrier down, as shown. If de-
sired, top-stitch remaining edges of waistband.
c-Make worked or machine made buttonholes in front end of
waistband.

WORKED BUTTONHOLE--Mark position and stitch around mark.
Slash between stitching then overcast edges. Begin button-
hole stitch at upper right hand corner and work from right to
left; bring the threads from the eye of the needle under
the needle point, as shown. Work fanwise at end nearest
opening edge. Work a bar at other end; blanket stitch thru
fabric over bar.

**7-FINISHING BELT CARRIERS AND
WAISTBAND**--Place remaining
end of belt carriers at small
•'s on waistband and sew in
place. Lap ends of waistband
and sew button under button-
hole.



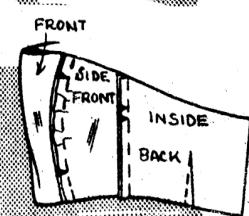
8-LOWER EDGE--Turn under lower
edge along fold line for hem;
baste. Stitch under 1/4" on
raw edge or finish with seam
binding. Slip-stitch in place. Turn up lower edge along fold
line to form cuff. French-tuck cuff to seams.



BRA STYLE 1 AND 2

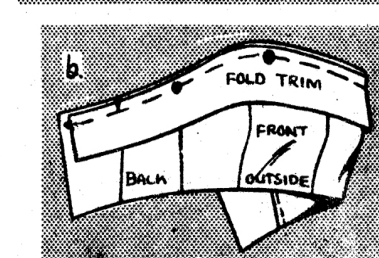
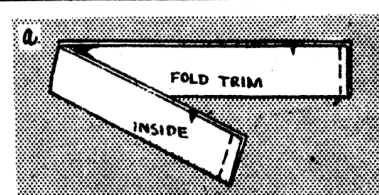
9-DARTS--At bra back--See Step
1.

10-SEAMS--Join bra front to bra
side front, easing side front
to front between notches.
Join bra side front to bra
back. Make darts and join
facing sections in same man-
ner.

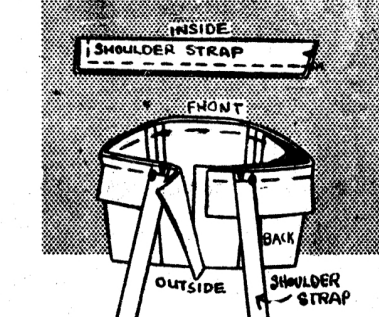


11-FOLD TRIM--a-With **RIGHT** sides
together, fold trim in half
lengthwise and stitch ends;
turn. Baste raw edges to-
gether.

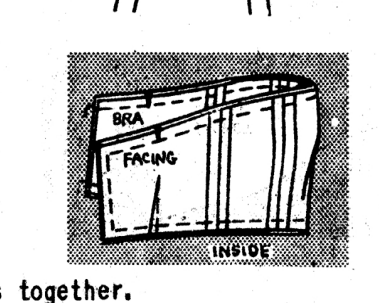
b-Baste the fold trim to
upper edge of bra on **OUTSIDE**,
matching centers front, and
having ends at center back
and small •'s at side seams,
and stretching fold trim be-
tween notches.



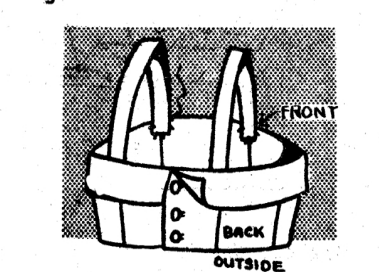
12-SHOULDER STRAPS--with **RIGHT**
sides together, fold in half
lengthwise. Stitch leaving
notched end open. Turn. Place
raw end of strap on back,
matching small •'s and
notches. Baste.



13-FACING--with **RIGHT** sides to-
gether, join facing to bra
sections over fold trim.
Stitch, leaving **LEFT** back
opening edges open. Turn.
Slip-stitch **LEFT** opening edges together.



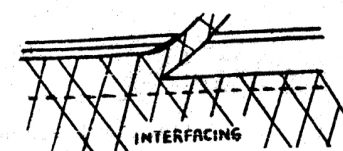
14-BUTTONHOLES--Make worked or
machine made buttonholes on
RIGHT back. See Step 6 para-
graph c. Lap **RIGHT** back over
LEFT, matching centers and
sew buttons under buttonholes.



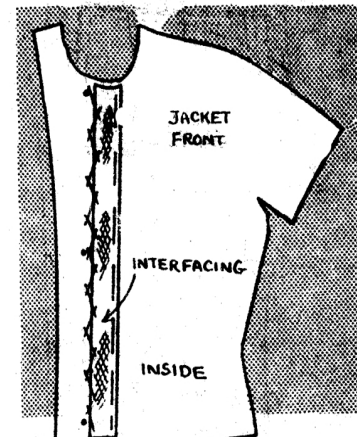
FINISHING SHOULDER STRAP--Place the finished end of shoulder
strap at side front seam of facing. Adjust to fit and sew in
place securely by hand.

JACKET STYLE 1

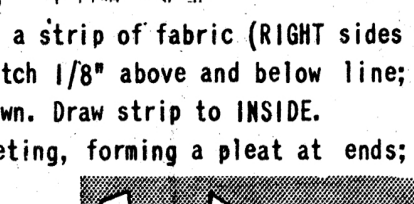
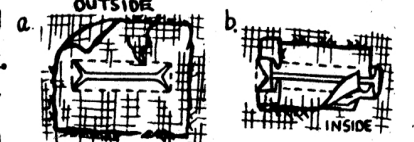
NOTE:--When interfacing
is stitched in a seam,
trim interfacing 1/8"
from stitching.



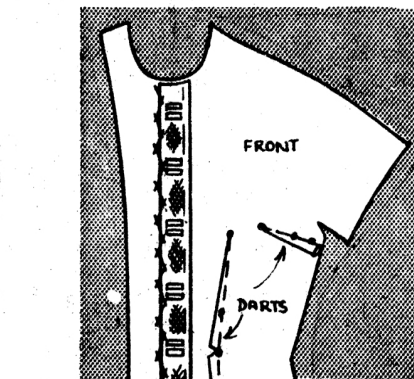
15-INTERFACING-(See Cutting
Notes)--Baste interfacing to
WRONG side of jacket front
1/8" from fold line. Catch-
stitch edge in place along
fold line.



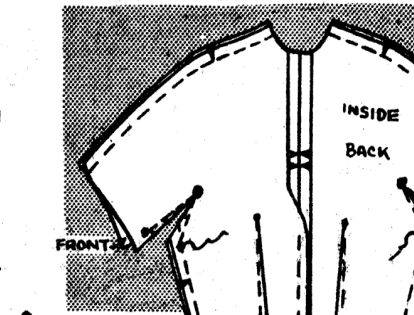
16-BOUND BUTTONHOLES--Make bound
buttonholes in **RIGHT** front.
(If desired, make worked or
machine made buttonholes when
garment is finished.) a-Baste a strip of fabric (**RIGHT** sides
together) over marking. Stitch 1/8" above and below line;
square at ends. Slash as shown. Draw strip to **INSIDE**.
b-Make piping with edges meeting, forming a pleat at ends;
sew to seam.



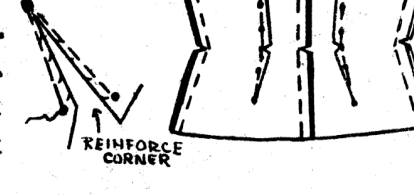
17-DARTS--At front underarm and
front and back waistline. Make
same as in Step 1. Press under-
arm darts down. Clip darts
at waistline and press to-
ward centers.



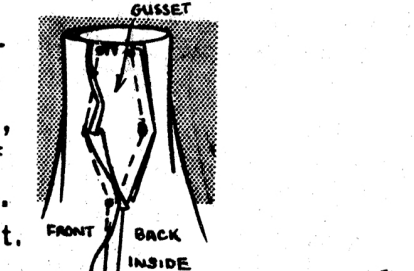
18-REINFORCING UNDERARM--Stitch
along seam line at underarm
in front and back thru small
and medium •'s. Slash to
stitching. whip point to re-
inforce.



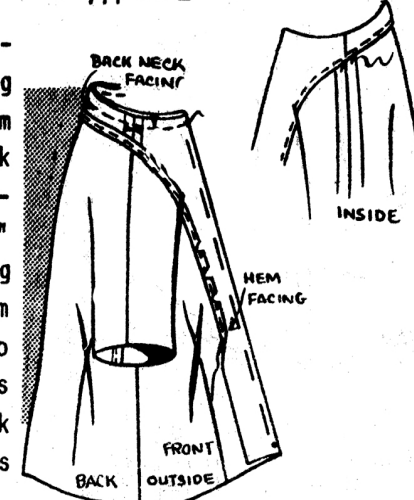
SEAMS--Join center back seam.
Join entire shoulder seam.
Join underarm seam of jacket
below small •. Clip seam at
waistline.



19-GUSSET--Join gusset to under-
arm opening, matching small
and medium •'s, as shown,
and matching seam line of
gusset to seam line of jacket.
Press seams away from gusset.



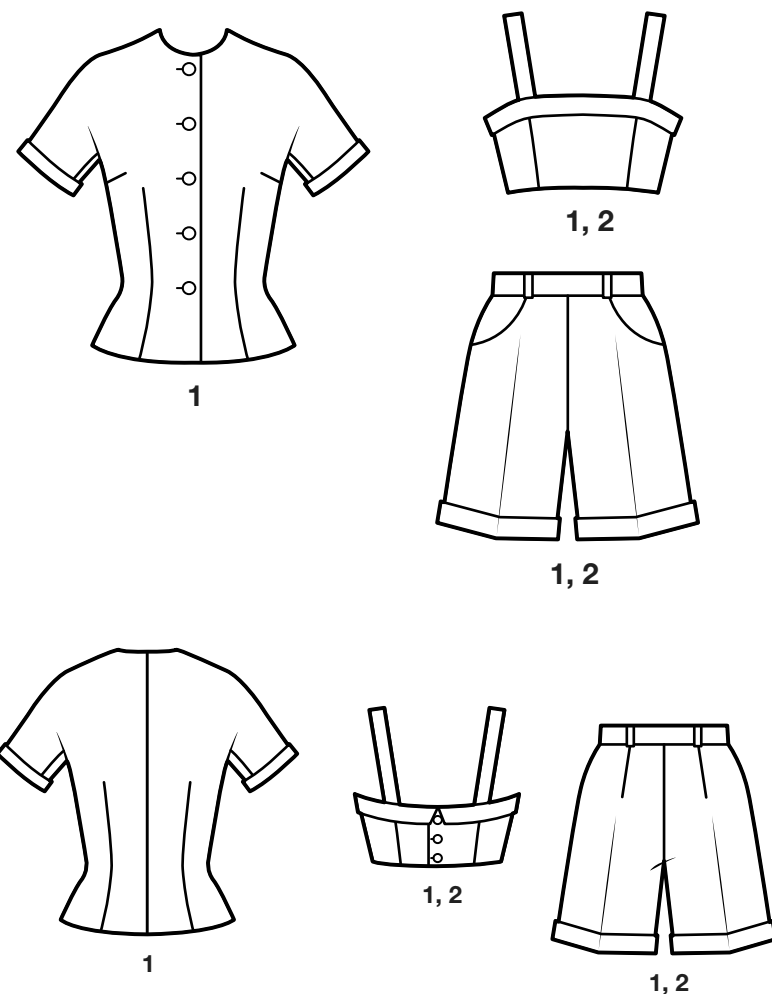
20-FACINGS--Fold front ex-
tension to **OUTSIDE** along
fold line to form hem
facing; baste. Join back neck
facing to hem facing at shoul-
der seam. Stitch under 1/4"
on unnotched edges, clipping
curves or finish with seam
binding. Baste facings to
neck edge, matching centers
and seams. Stitch entire neck
edge. Trim seam. Turn facings
to **INSIDE** and tack to seams.
FOR REMAINING INSTRUCTIONS SEE REVERSE SIDE OF SHEET



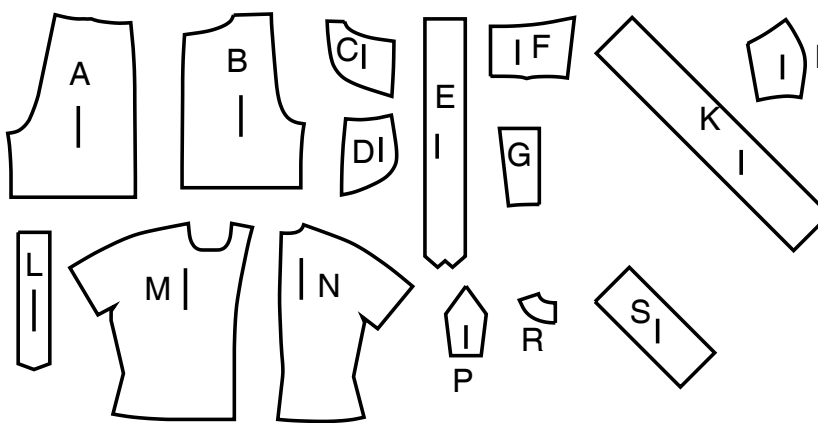
Simplicity®

Thank you for purchasing this Simplicity pattern. We made every effort to provide you with a high quality product.

SUPPLEMENTAL CUTTING LAYOUTS



15 PIECES



- A Shorts Back
- B Shorts Front
- C Shorts Pocket Facing
- D Shorts Yoke and Pocket
- E Waistband
- F Bra Back
- G Bra Front
- H Bra Side Front
- K Bra Fold Trim
- L Shoulder Strap
- M Jacket Front and Sleeve
- N Jacket Back and Sleeve
- P Gusset
- R Back Neck Facing
- S Cuff

General Directions

The Pattern

SYMBOLS

- ↔ GRAIN LINE Place on straight grain of fabric parallel to selvage
- ⇄ PLACE SOLID LINE on fold of fabric.
- CENTER FRONT OR BACK of garment.
- ▽▽ NOTCHES
- ○ DOTS
- CUTTING LINE
- == LENGTHEN OR SHORTEN LINES

ADJUST IF NEEDED

Make adjustments before placing pattern on fabric.

TO LENGTHEN: Cut pattern between lengthen or shorten lines. Spread pattern evenly, the amount needed and tape to paper.

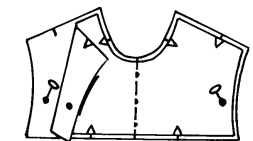
TO SHORTEN: At lengthen or shorten lines, make an even pleat taking up amount needed. Tape in place.

When lengthen or shorten lines are not given, make adjustments at lower edge of pattern.

SEAM ALLOWANCE: 5/8" (1.5cm) unless otherwise stated is included but not printed on MULTI-SIZE PATTERNS. Mark your size with colored felt tip pen. See chart on tissue for how to use MULTI-SIZE PATTERNS.

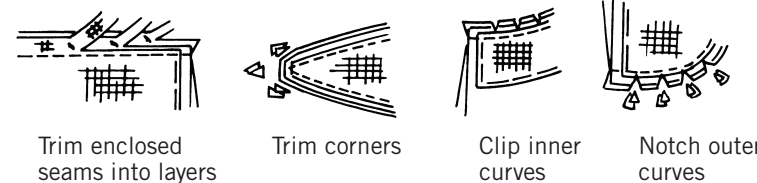
Cutting/Marking

- BEFORE CUTTING:**
- PRESS pattern pieces with a warm dry iron. PRE-SHRINK fabric by pre-washing washables or steam-pressing non-washables.
 - CIRCLE your cutting layout.
 - PIN pattern to fabric as shown in Cutting Layouts.
 - FOR DOUBLE THICKNESS: Fold fabric with RIGHT sides together.
 - FOR SINGLE THICKNESS: Place fabric RIGHT side up.
 - FOR PILE, SHADED OR ONE WAY DESIGN FABRICS: Use "with nap" layouts
- AFTER CUTTING:**
- Transfer markings to WRONG side of fabric before removing pattern. Use pin and chalk method or dressmaker's tracing paper and wheel.
- To Quick Mark:**
- Snip edge of fabric to mark notches, ends of fold lines and center lines.
 - Pin mark dots.



Sewing

- SEW garment following **Sewing Directions**.
- PIN or machine-baste seams matching notches.
- STITCH 5/8" (1.5 cm) seams unless otherwise stated.
- PRESS seams open unless otherwise indicated clipping when necessary so seams will lie flat.
- TRIM seams to reduce bulk, as shown below.



SPECIAL CUTTING NOTES

- ★ If layout shows a piece extending past fold, cut out all pieces except piece that extends.
- ✱ Mark small arrows along both selvages indicating direction of nap or design. Fold fabric crosswise with RIGHT sides together, and cut along fold (a).
- Turn one fabric layer around so arrows on both layers go in the same direction. Place RIGHT sides together (b).

Cutting Layouts

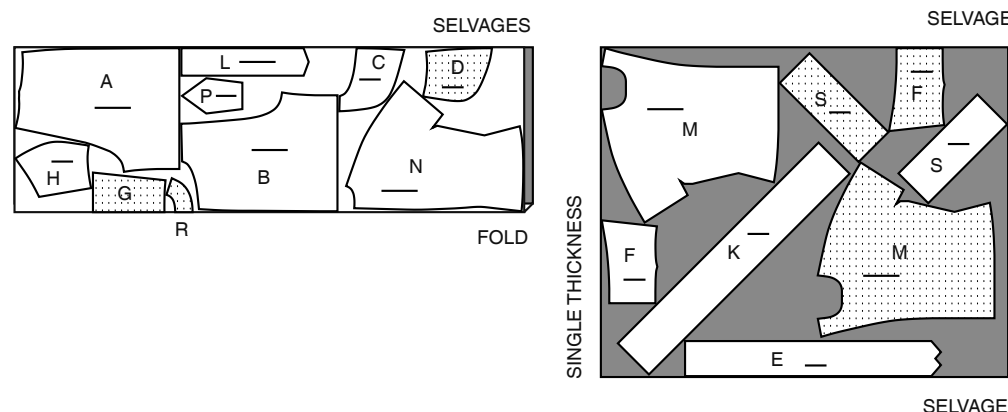
- WRONG SIDE OF FABRIC
- RIGHT SIDE OF FABRIC
- PATTERN PIECE WITH PRINTED SIDE UP
- PATTERN PIECE WITH PRINTED SIDE DOWN
- ★ SEE SPECIAL CUTTING NOTES

POSITION OF PATTERN PIECES MAY VARY SLIGHTLY ACCORDING TO YOUR PATTERN SIZE

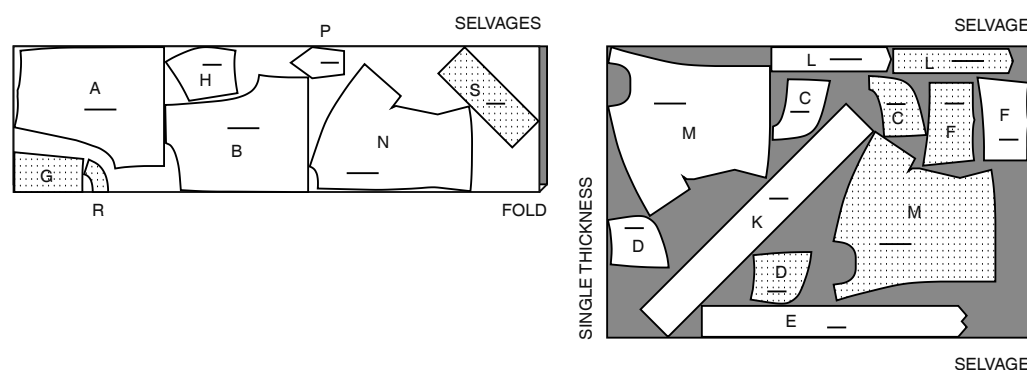
STYLE 1 - SHORTS, BRA AND JACKET

USE PIECES A B C D E F G H K L M N P R S

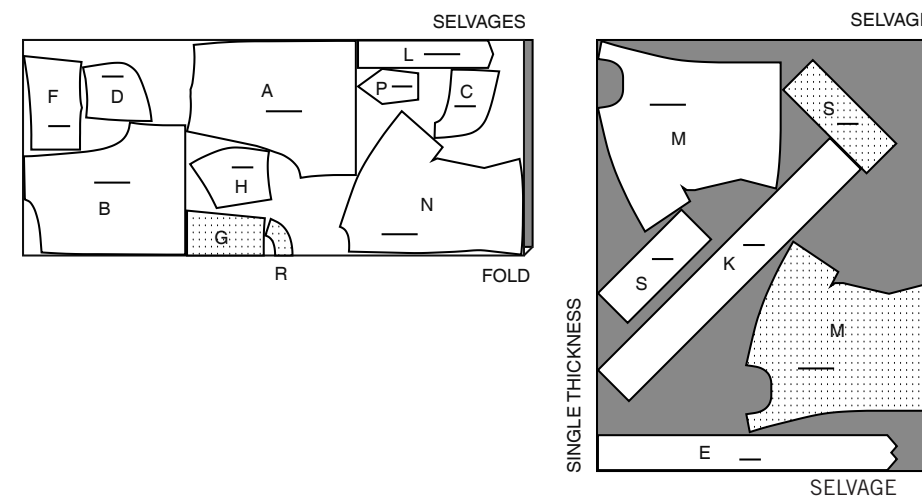
45" (115CM) WITH NAP SIZES 4 6 8 10 12 14 16



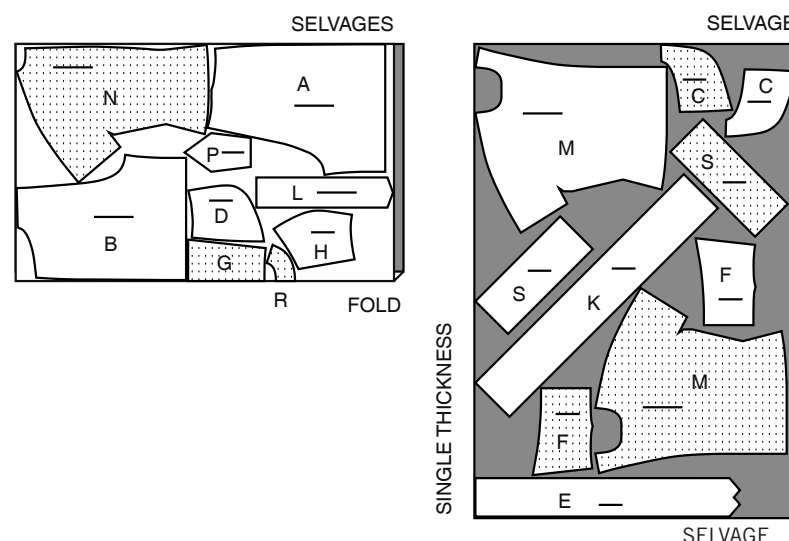
45" (115CM) WITH NAP SIZES 18 20 22



60" (150CM) WITH NAP SIZES 16 18 20 22



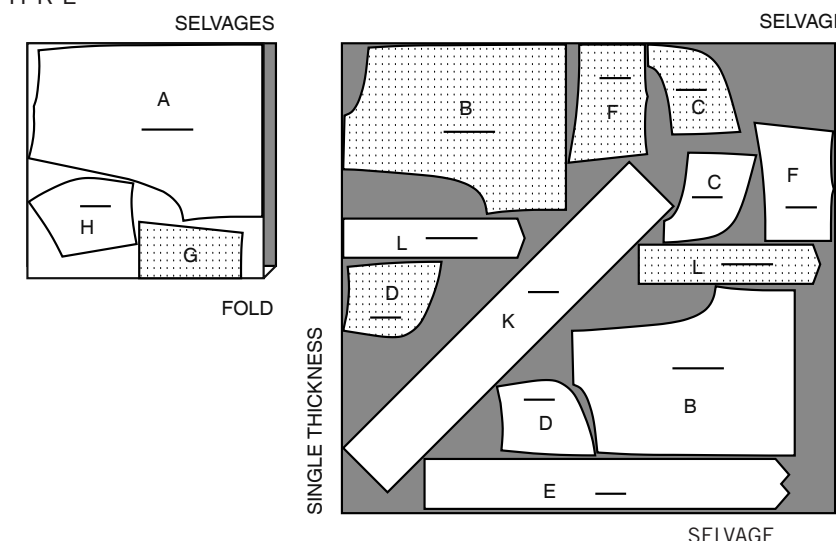
60" (150CM) WITH NAP SIZES 4 6 8 10 12 14



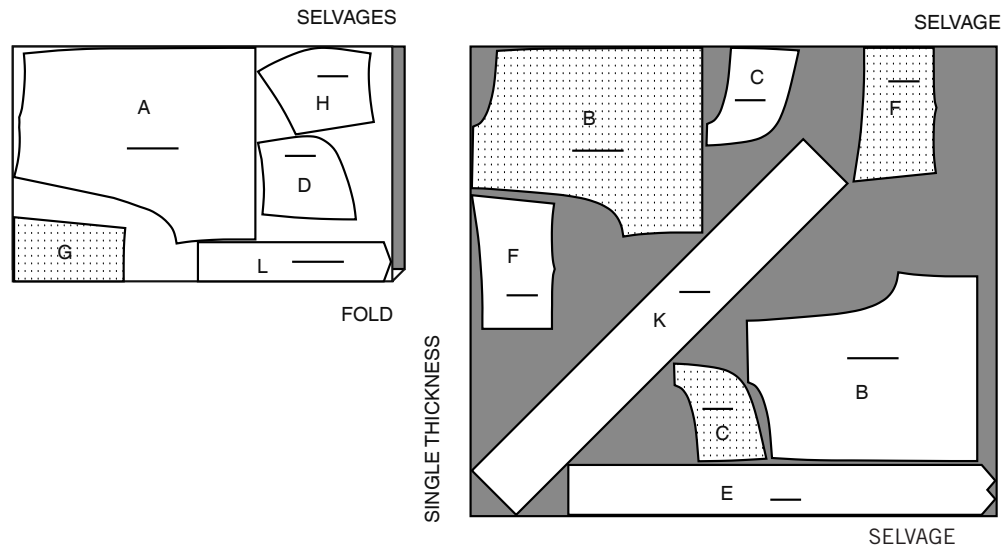
STYLE 2 - BRA AND SHORTS

USE PIECES A B C D E F G H K L

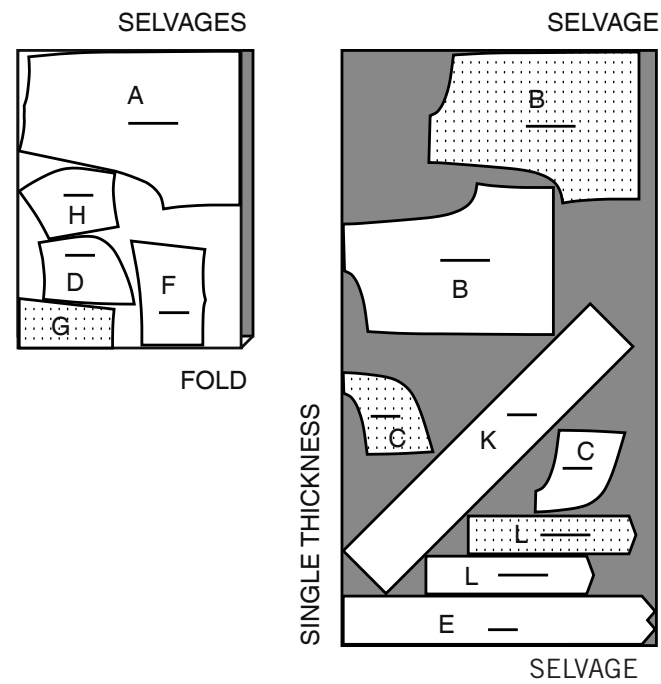
45" (115CM) WITH NAP SIZES 4 6 8 10 12 14 16



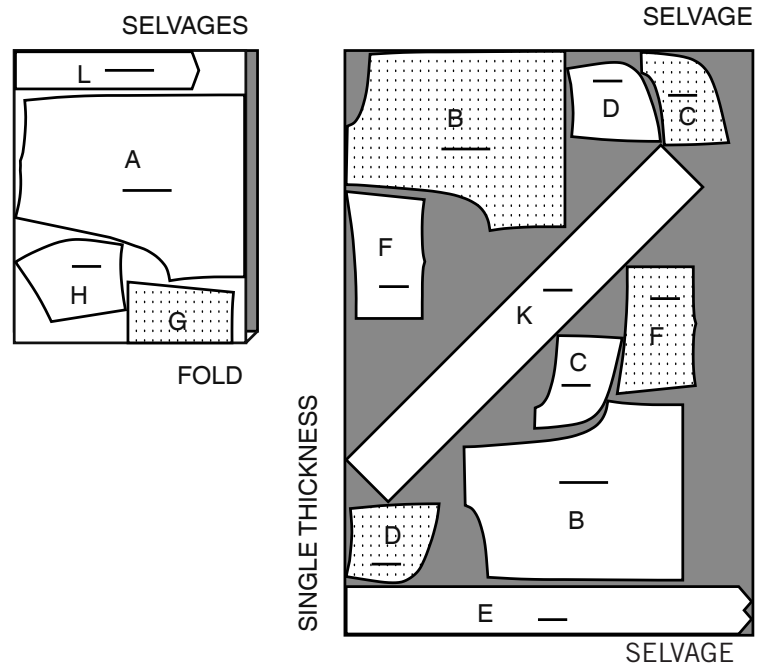
45" (115CM)
WITH NAP
SIZES 18 20 22



60" (150CM)
WITH NAP
SIZES 4 6 8 10 12



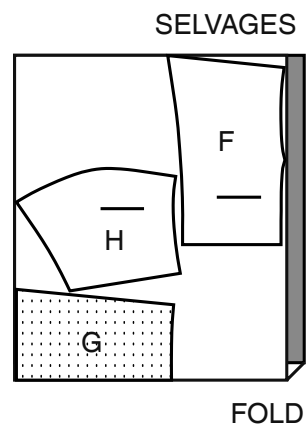
60" (150CM)
WITH NAP
SIZES 14 16 18 20 22



STYLE 1 OR 2 LINING FOR BRA

USE PIECES F G H

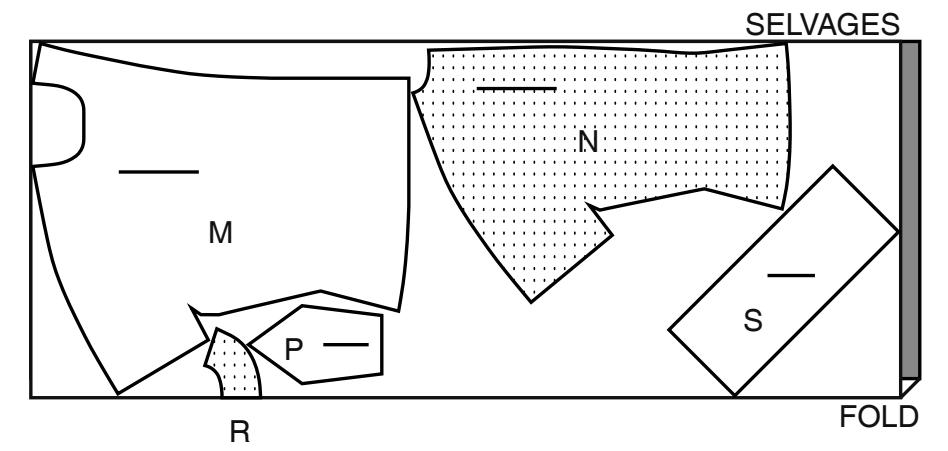
45" (115CM)
WITHOUT NAP
ALL SIZES



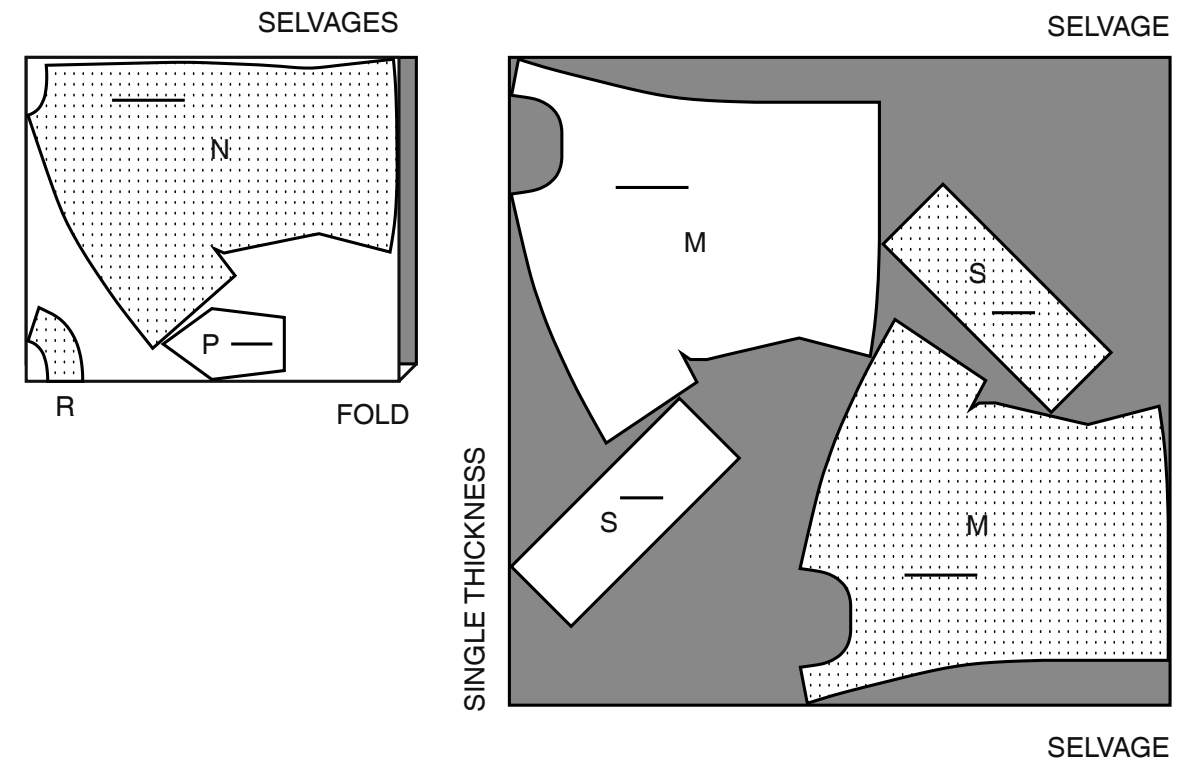
SEPARATE JACKET

USE PIECES M N P R S

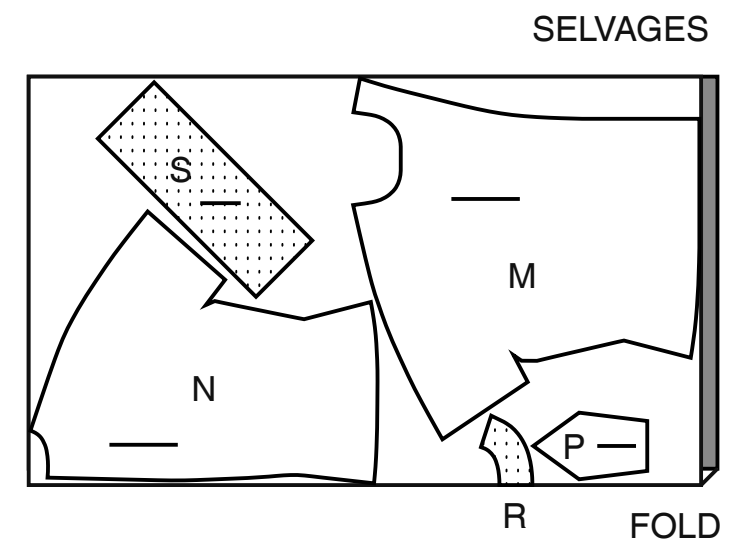
45" (115CM)
WITH NAP
SIZES 4 6 8 10



45" (115CM)
WITH NAP
SIZES 12 14 16 18 20 22



60" (150CM)
WITH NAP
ALL SIZES



INTERFACING

NOTE: See cutting notes on original guide to determine yardages.