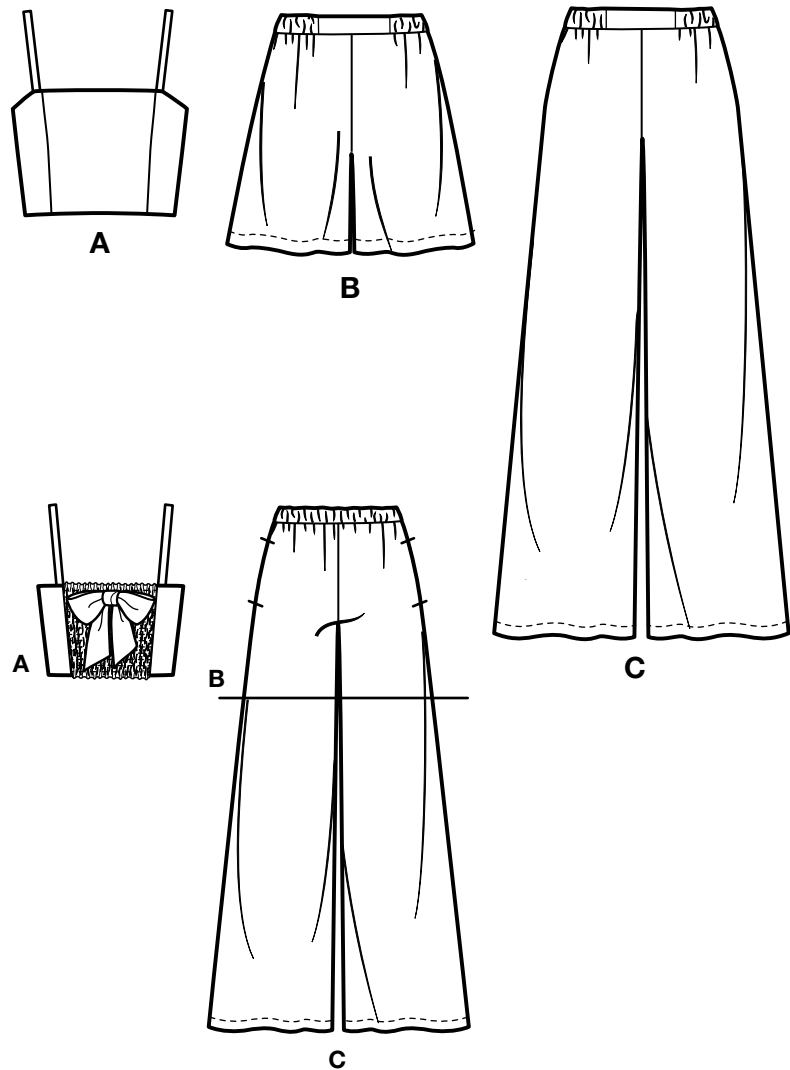
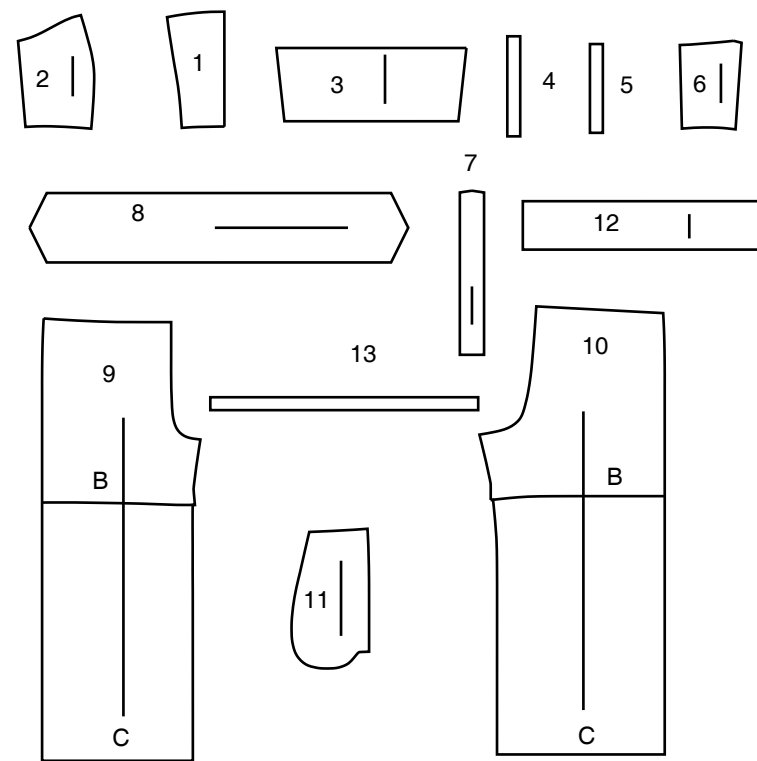


Simplicity®

Thank you for purchasing this Simplicity pattern. We made every effort to provide you with a high quality product.



13 PIECES



- 1 FRONT - A
- 2 SIDE FRONT - A
- 3 BACK - A
- 4 ELASTIC GUIDE FOR BACK - A
- 5 ELASTIC GUIDE FOR BACK - A
- 6 SIDE BACK - A
- 7 SHOULDER STRAP - A
- 8 BOW - A
- 9 FRONT - B,C
- 10 BACK - B,C
- 11 POCKET - B,C
- 12 CASING - B,C
- 13 GUIDE FOR ELASTIC - B,C

General Directions

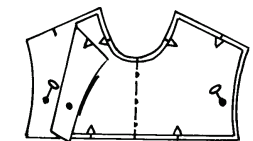
The Pattern

- SYMBOLS**
- ↔ GRAIN LINE Place on straight grain of fabric parallel to selvage
 - ⇄ PLACE SOLID LINE on fold of fabric.
 - CENTER FRONT OR BACK of garment.
 - ▽▽▽ NOTCHES
 - ○ DOTS
 - CUTTING LINE
 - == LENGTHEN OR SHORTEN LINES
- SEAM ALLOWANCE: 5/8" (1.5cm) unless otherwise stated is included but not printed on MULTI-SIZE PATTERNS. Mark your size with colored felt tip pen. See chart on tissue for how to use MULTI-SIZE PATTERNS.

- ADJUST IF NEEDED**
- Make adjustments before placing pattern on fabric.
- TO LENGTHEN:** Cut pattern between lengthen or shorten lines. Spread pattern evenly, the amount needed and tape to paper.
- TO SHORTEN:** At lengthen or shorten lines, make an even pleat taking up amount needed. Tape in place.
- When lengthen or shorten lines are not given, make adjustments at lower edge of pattern.

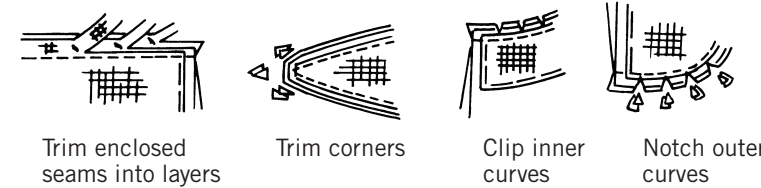
Cutting/Marking

- BEFORE CUTTING:**
- PRESS pattern pieces with a warm dry iron. PRE-SHRINK fabric by pre-washing washables or steam-pressing non-washables.
 - CIRCLE your cutting layout.
 - PIN pattern to fabric as shown in Cutting Layouts.
 - FOR DOUBLE THICKNESS: Fold fabric with RIGHT sides together.
 - FOR SINGLE THICKNESS: Place fabric RIGHT side up.
 - FOR PILE, SHADED OR ONE WAY DESIGN FABRICS: Use "with nap" layouts
- AFTER CUTTING:**
- Transfer markings to WRONG side of fabric before removing pattern. Use pin and chalk method or dressmaker's tracing paper and wheel.
- To Quick Mark:**
- Snip edge of fabric to mark notches, ends of fold lines and center lines.
 - Pin mark dots.



Sewing

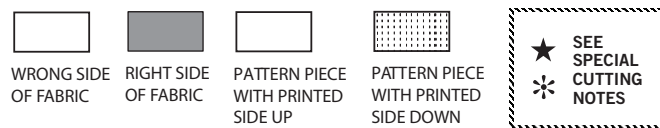
- SEW garment following **Sewing Directions**.
- PIN or machine-baste seams matching notches.
- STITCH 5/8" (1.5 cm) seams unless otherwise stated.
- PRESS seams open unless otherwise indicated clipping when necessary so seams will lie flat.
- TRIM seams to reduce bulk, as shown below.



SPECIAL CUTTING NOTES

- ★ If layout shows a piece extending past fold, cut out all pieces except piece that extends.
- ✱ Mark small arrows along both selvages indicating direction of nap or design. Fold fabric crosswise with RIGHT sides together, and cut along fold (a).
- Turn one fabric layer around so arrows on both layers go in the same direction. Place RIGHT sides together (b).

Cutting Layouts

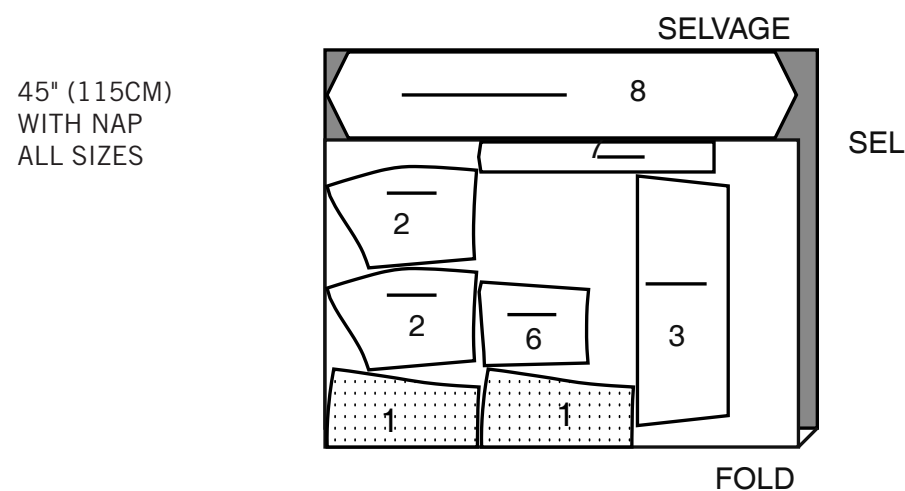


POSITION OF PATTERN PIECES MAY VARY SLIGHTLY ACCORDING TO YOUR PATTERN SIZE

TOP A

USE PIECES 1 2 3 6 7 8

PIECES 4 5 ARE CUT OF ELASTIC



45" (115CM) WITH NAP ALL SIZES

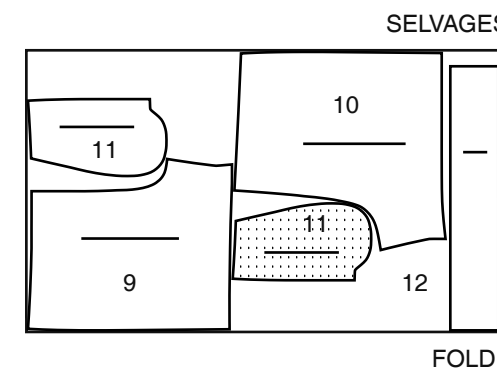
SHORT B

SHORT B

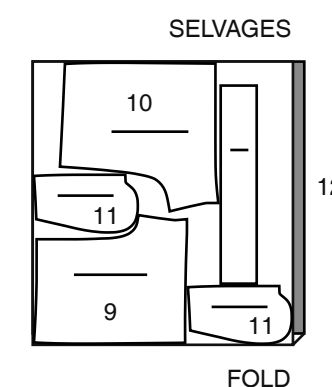
USE PIECES 9 10 11 12

PIECE 13 IS CUT OF ELASTIC

45" (115CM) WITH NAP ALL SIZES



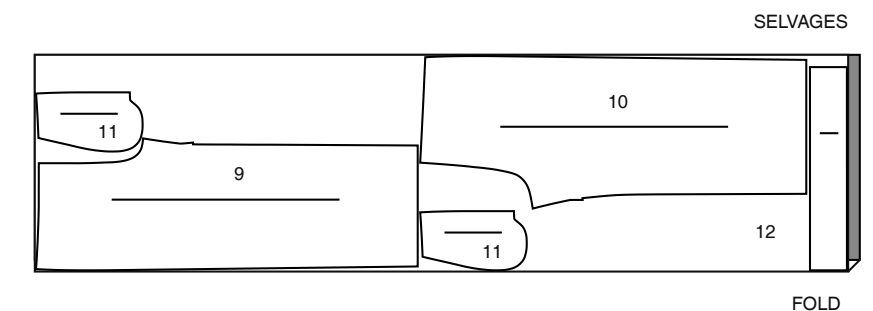
60" (150CM) WITH NAP ALL SIZES



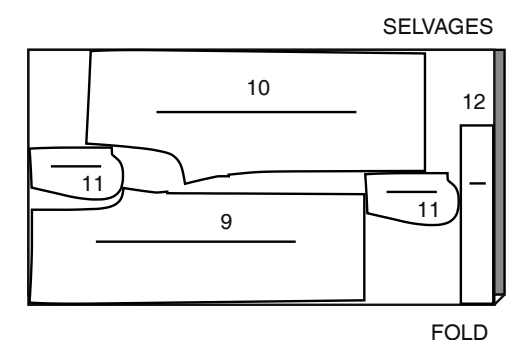
PANTS C

USE PIECES 9 10 11 12

45" (115CM) WITH NAP ALL SIZES



60" (150CM) WITH NAP ALL SIZES



SEWING TUTORIALS



Build your skills viewing short, easy-to-follow videos at simplicity.com/sewingtutorials

Sewing Directions

FABRIC KEY RIGHT SIDE WRONG SIDE INTERFACING LINING (RIGHT SIDE) LINING (WRONG SIDE)

Read **General Directions** on page 1 before you begin.

Sewing methods in **BOLD TYPE** have Sewing Tutorial Video available. Scan QR CODE to watch videos:

STAYSTITCH - See Machine Stitches: "how to do stay-stitching" video.

STITCH IN THE DITCH - See Machine Stitches: "how to stitch in the ditch" video.

SLIPSTITCH - Slide needle through a folded edge, then pick up a thread of underneath fabric.

PATTERN PIECES WILL BE IDENTIFIED BY NUMBERS THE FIRST TIME THEY ARE USED.

STITCH SEAMS WITH RIGHT SIDES TOGETHER UNLESS OTHERWISE STATED.

NOTE: Under each sub-heading, the first view will be illustrated, unless otherwise illustrated.

TOP A

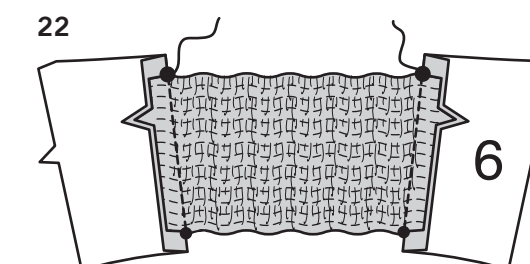
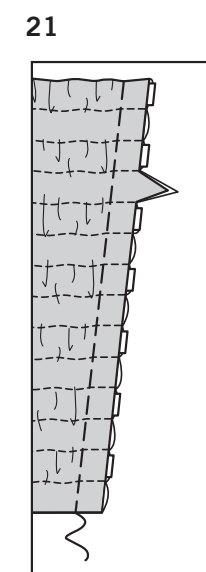
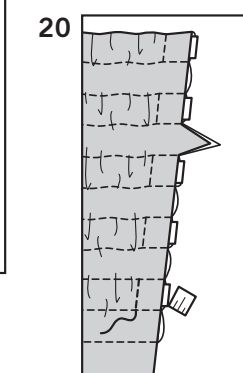
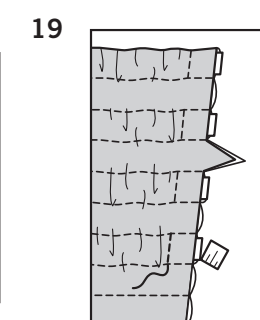
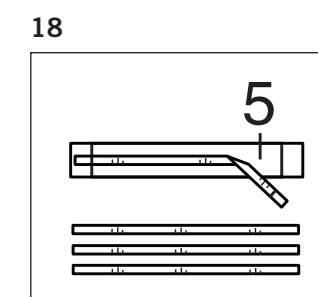
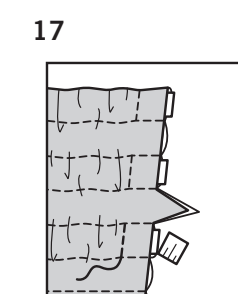
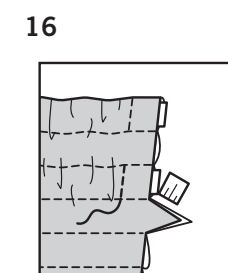
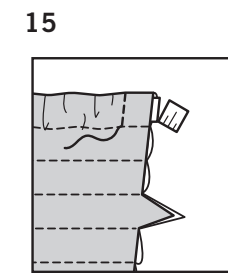
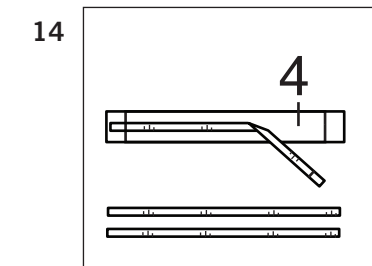
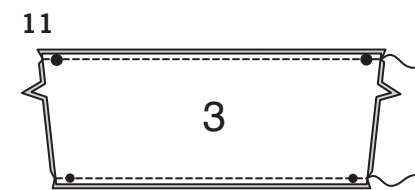
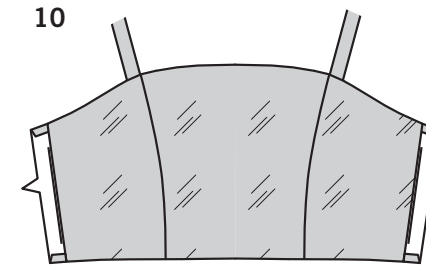
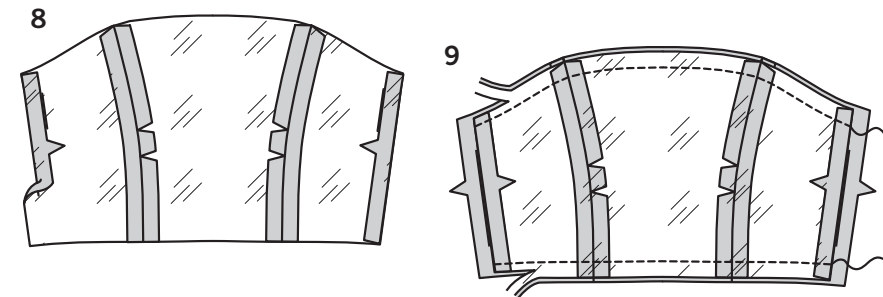
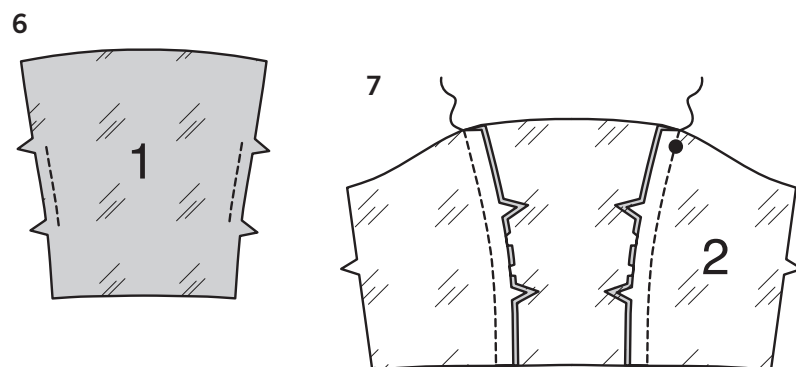
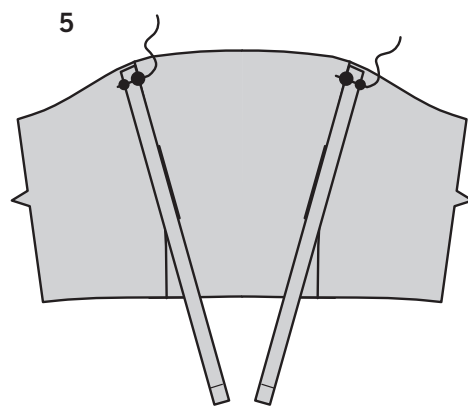
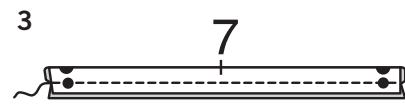
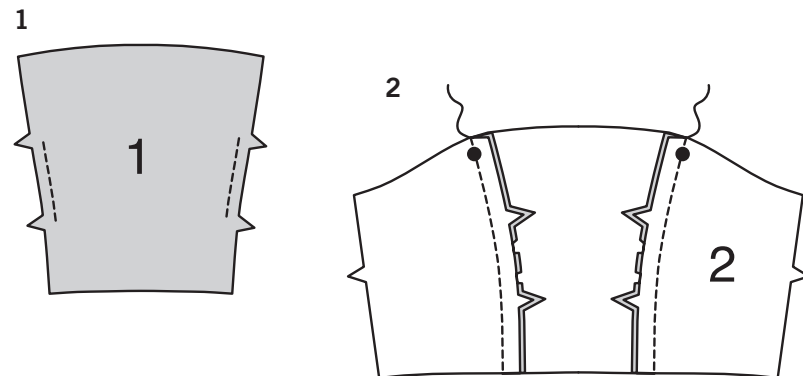
FRONT AND SHOULDER STRAPS

- STAYSTITCH** one FRONT (1) section at sides. (Remaining front sections will be used as lining.)
- With **RIGHT** sides together, pin one SIDE FRONT (2) section to each side of front matching large dots, clipping front where necessary. (Remaining side front sections will be used as lining.)
- Fold SHOULDER STRAP (7) in half lengthwise, **RIGHT** sides together, matching dots, having raw edges even. Stitch long edges in $\frac{3}{8}$ "(1cm) seam.
- Turn strap **RIGHT** side out; press. Baste raw edges.

- On outside, pin front edge of straps to side front, matching dots; baste.

FRONT LINING

- STAYSTITCH** front LINING (1) at sides.
- With **RIGHT** sides together, pin one side front LINING (2) section to each side of front lining matching large dots, clipping front lining where necessary. Stitch.



- Press under $\frac{5}{8}$ "(1.5cm) on side edges of lining.

- Pin lining to front/side front, **RIGHT** sides together, matching centers and seams. Stitch upper and lower edges, keeping ends of straps free. Trim seams.

- Turn lining to inside; press.

BACK AND SIDE BACK

- Pin BACK (3) sections, **RIGHT** sides together, matching centers and dots. Stitch upper and lower edges in $\frac{1}{4}$ "(6mm) seam.

- Turn back **RIGHT** side out; press.

- To form casings, stitch back section along stitching lines, through both layers.

- For upper casings, cut three pieces of elastic, each using ELASTIC GUIDE FOR BACK (4) pattern piece.

- Starting from upper edge of back to lower edge, insert one elastic section through upper casing, having ends even. Stitch across ends.

- Skip next casing. Insert another elastic section through next casing, having ends even. Stitch across ends.

- Skip next casing. Insert last elastic section through next casing, having ends even. Stitch across ends.

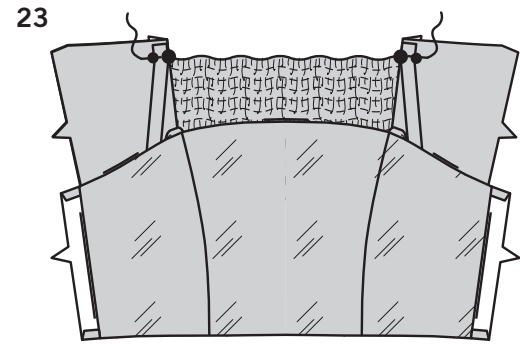
- For lower casings, cut four pieces of elastic, each using ELASTIC GUIDE FOR BACK (5) pattern piece.

- Skip next casing below previous elastic section. Insert one elastic section through next casing, having ends even. Stitch across ends.

- Skip next casing. Insert another elastic section through next casing, having ends even. Stitch across ends.

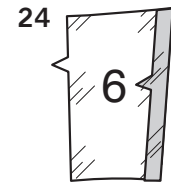
- Continue skipping one casing row and inserting one elastic section in casing, ending with one empty casing at lower edge of back. Baste along side edges of back, stretching elastics.

- Pin one SIDE BACK (6) section to each side of back, matching notches and dots; stitch. Press seams toward side back. (Remaining side back sections will be used as lining.)

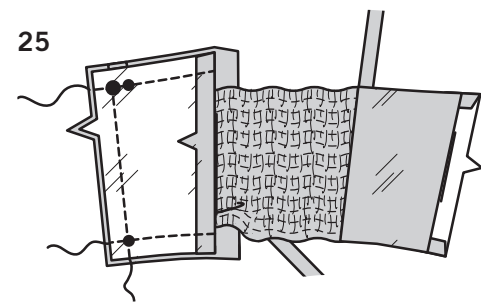


23. On outside, pin back ends of straps to side back, matching dots; baste.

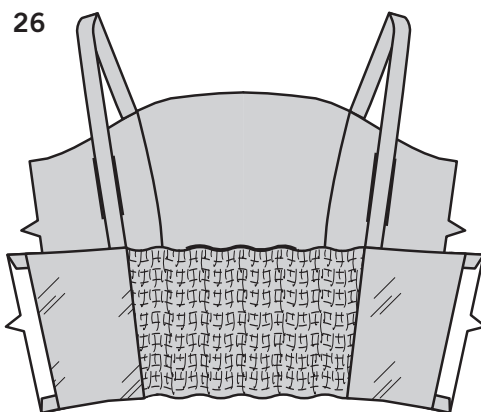
SIDE BACK LINING



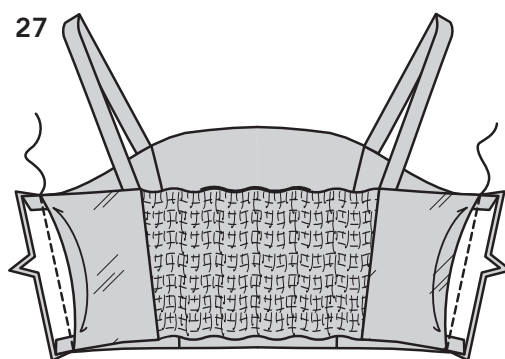
24. Press under 5/8" (1.5cm) on side edge of side back LINING (6).



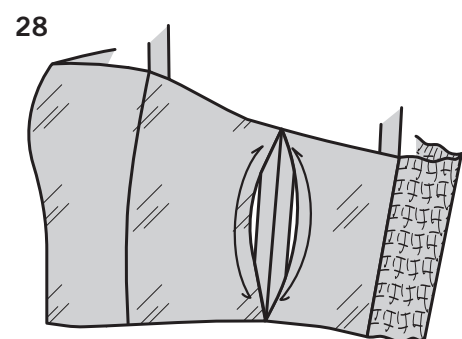
25. Pin lining to side back, (over back/shoulder straps), RIGHT sides together. Stitch side back seams, trim seams. Stitch across upper and lower edges, keeping back free; trim seams.



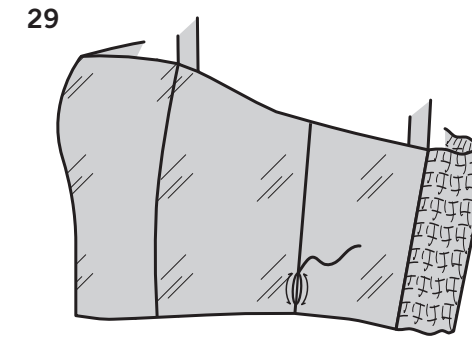
26. Turn side back RIGHT side out, turning straps up; press.



27. Stitch back to front at side seams, keeping lining free.

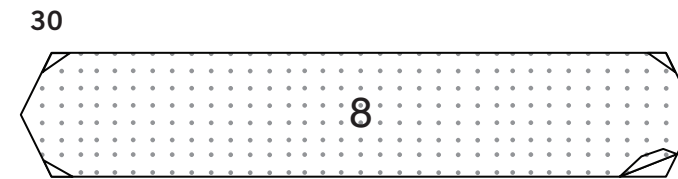


28. Finger-press side seam allowances open. Slip seam allowances under lining.

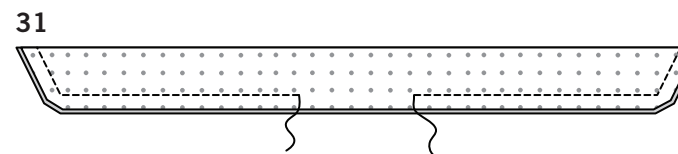


29. SLIPSTITCH lining edges together.

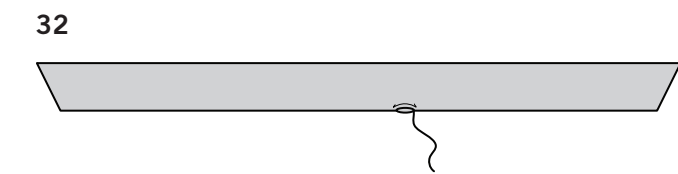
BOW



30. Trim corners of INTERFACING, as shown. Fuse interfacing to wrong side of BOW (8) matching FABRIC section, following manufacturer's instructions.

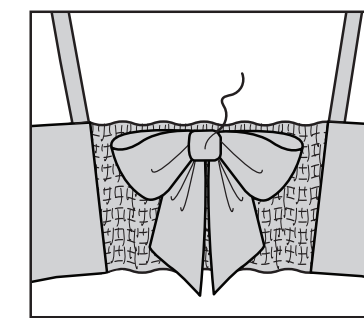


31. Fold bow in half lengthwise, RIGHT sides together. Stitch, leaving an opening for turning. Trim seams and corners.



32. Turn bow RIGHT side out; press. SLIPSTITCH opening edges.

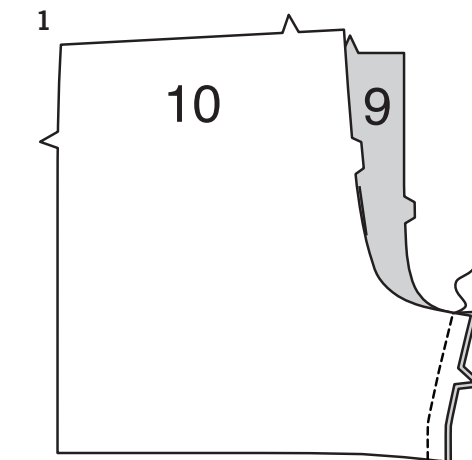
33



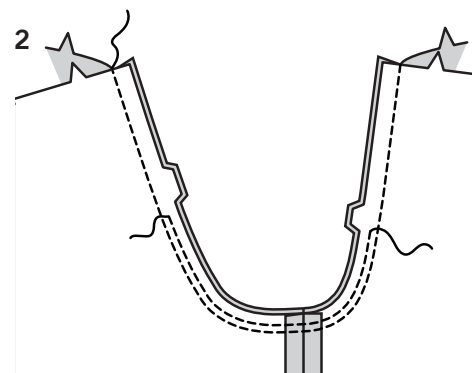
33. Tie ends in a bow. Tack bow to top at center back, just below upper edge.

SHORTS B, PANTS C

FRONT AND BACK



1. Stitch FRONT (9) to BACK (10) at inner leg seams.



2. With RIGHT sides together, pin center seam, matching inner leg seam and notches. Stitch. To reinforce seam, stitch again over first stitching.

POCKETS

Apply pockets to side edges of shorts/pants front and back as follows:

- 3.** With RIGHT sides together, pin POKET (11) to shorts/pants, matching large dots, having raw edges even. Stitch in 3/8"(1cm) seam.

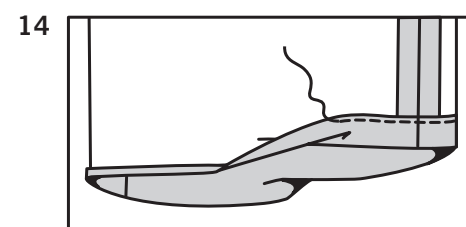
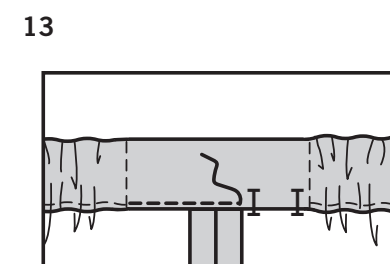
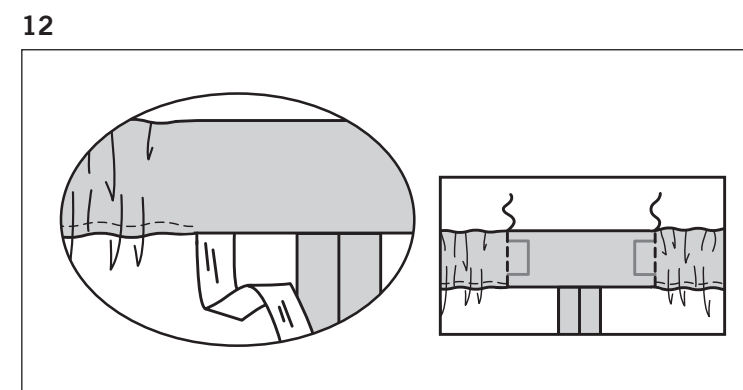
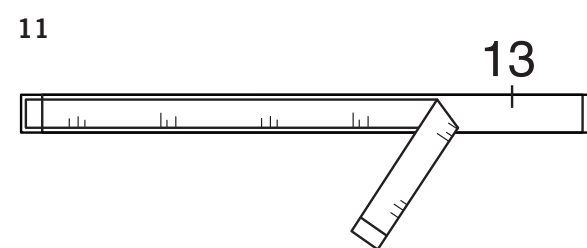
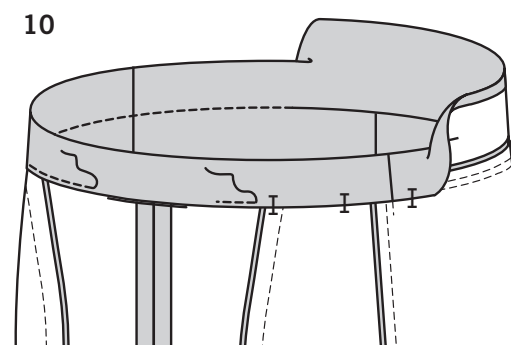
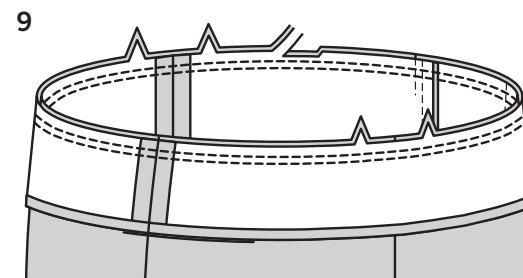
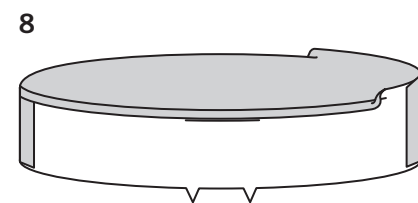
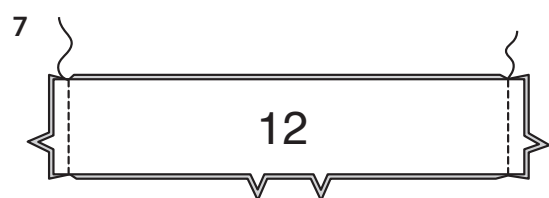
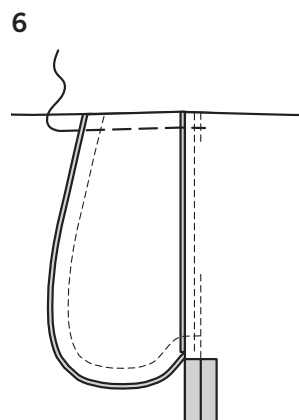
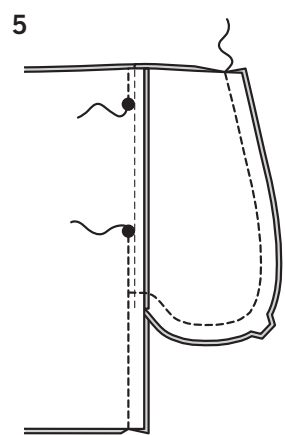
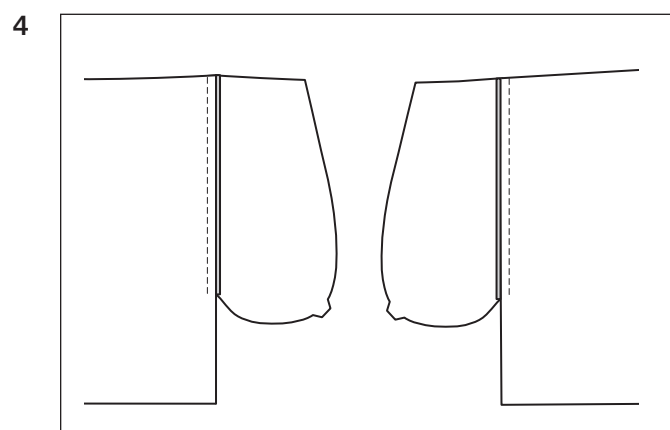
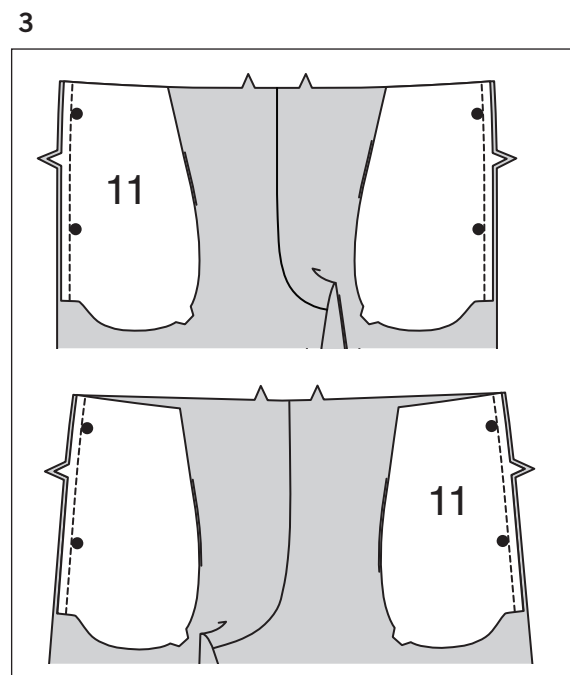
- 4.** Press seam toward pocket, pressing pocket out.

- 5.** Pin front to back at side seams, matching large dots. Stitch side seams, leaving an opening between large dots. Stitch pocket edges together from side seam to upper edge.

- 6.** Clip shorts/pants back seam allowance to stitching at lower end of pocket. Press seam open below clip. Press pocket toward front. Baste to upper edge.

CASING

- 7.** With RIGHT sides together, pin CASING (12) sections, matching notches. Stitch side seams.



- 8.** Press under 3/8"(1cm) on long unnotched edge of casing

- 9.** With RIGHT sides together, pin casing to garment, matching notches, centers and side seams, placing section with stitching lines on front. Stitch; stitch again 1/4"(6mm) away in seam allowances. Trim seams close to second stitching. Press seams toward casing, turning casing out.

- 10.** On INSIDE, pin pressed edge of casing over seam, placing pins on OUTSIDE. Pressed edge extends 1/4"(6mm) below seam. On OUTSIDE, **STITCH IN THE DITCH** or groove of the casing seam, catching in pressed edge of casing on INSIDE, leaving front casing free between stitching lines. Remove pins as you come to them.

- 11.** Cut elastic using GUIDE FOR ELASTIC (13) pattern piece.

- 12.** Insert elastic through one opening in front casing, exiting through opposite opening, having ends of elastic extending 5/8"(1.5cm) beyond stitching lines. Stitch ends of elastic securely along stitching lines. On INSIDE, pin front pressed edge of casing over seam, placing pins on OUTSIDE. **STITCH IN THE DITCH** or groove of remaining casing seam, removing pins as you come to them.

HEMS

- 13.** Turn up a 1-1/4"(3.2cm) hem on lower edge of garment. Press under 1/4"(6mm) on raw edge.

- 14.** Stitch close to inner pressed edge.