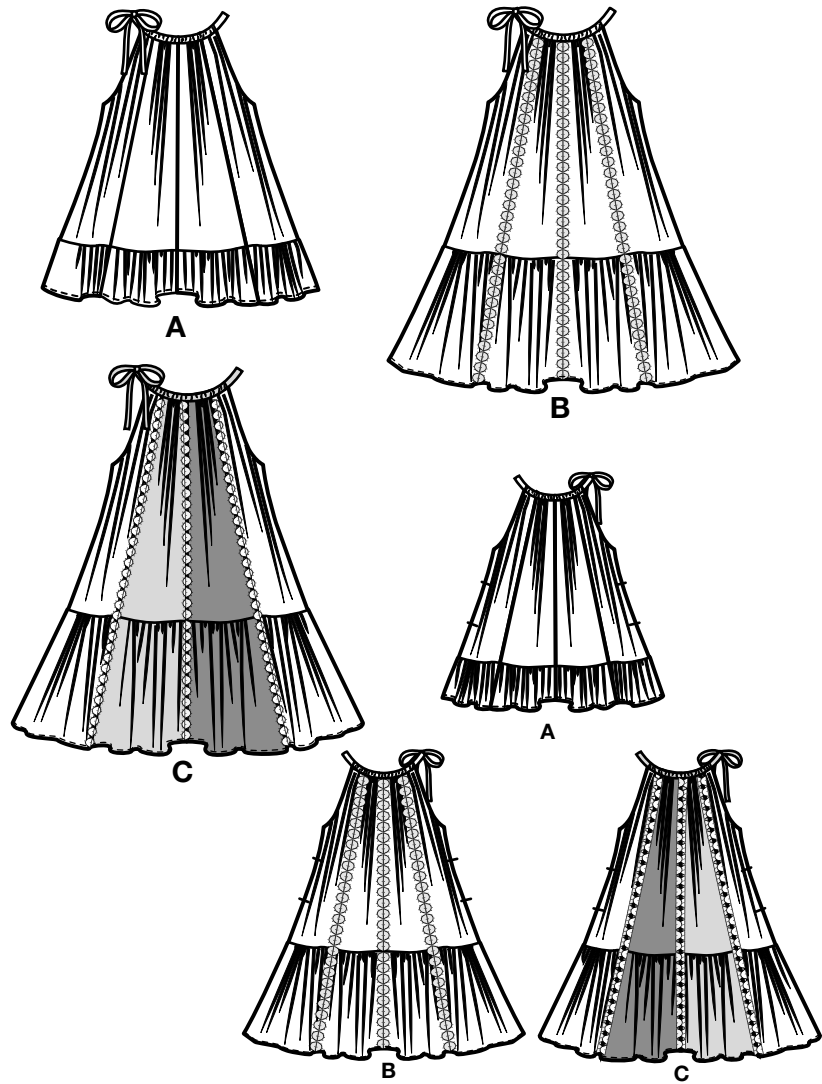
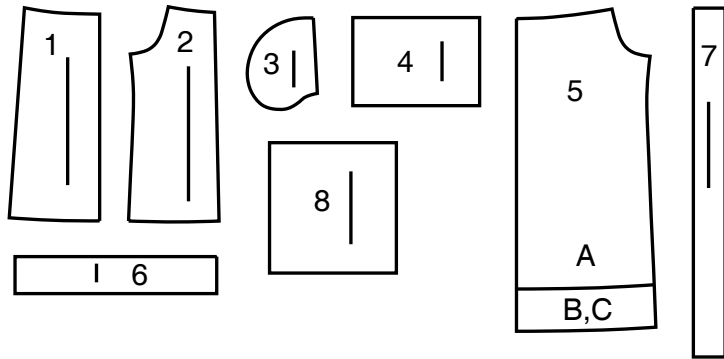


Thank you for purchasing this Simplicity pattern.
We made every effort to provide you with a high quality product.



8 PIECES



- 1 Front and Back-A,B,C
2 Side Front and Side Back-A,B,C
3 Pocket-A,B,C
4 Ruffle-A
5 Front and Back Lining-A,B,C
6 Casing-A,B,C
7 Shoulder Strap-A,B,C
8 Ruffle-B,C



www.simplicity.com



info@simplicity.com



1-888-588-2700

General Directions

The Pattern

- SYMBOLS**
- GRAIN LINE Place on straight grain of fabric parallel to selvage
 - PLACE SOLID LINE on fold of fabric.
 - CENTER FRONT OR BACK of garment.
 - NOTCHES
 - DOTS
 - CUTTING LINE
 - LENGTHEN OR SHORTEN LINES

SEAM ALLOWANCE: 5/8" (1.5cm) unless otherwise stated is included but not printed on MULTI-SIZE PATTERNS. Mark your size with colored felt tip pen. See chart on tissue for how to use MULTI-SIZE PATTERNS.

ADJUST IF NEEDED

Make adjustments before placing pattern on fabric.

TO LENGTHEN:
Cut pattern between lengthen or shorten lines. Spread pattern evenly, the amount needed and tape to paper.

TO SHORTEN:
At lengthen or shorten lines, make an even pleat taking up amount needed. Tape in place.

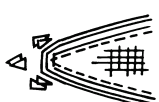
When lengthen or shorten lines are not given, make adjustments at lower edge of pattern.

Sewing

- SEW garment following **Sewing Directions**.
- PIN or machine-baste seams matching notches.
- STITCH 5/8" (1.5 cm) seams unless otherwise stated.
- PRESS seams open unless otherwise indicated clipping when necessary so seams will lie flat.
- TRIM seams to reduce bulk, as shown below.



Trim enclosed seams into layers



Trim corners



Clip inner curves



Notch outer curves

Cutting/Marking

BEFORE CUTTING:

PRESS pattern pieces with a warm dry iron. PRE-SHRINK fabric by pre-washing washables or steam-pressing non-washables.

CIRCLE your cutting layout.

PIN pattern to fabric as shown in Cutting Layouts.

• FOR DOUBLE THICKNESS: Fold fabric with RIGHT sides together.

• FOR SINGLE THICKNESS: Place fabric RIGHT side up.

• FOR PILE, SHADED OR ONE WAY DESIGN FABRICS: Use "with nap" layouts

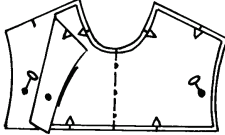
AFTER CUTTING:

Transfer markings to WRONG side of fabric before removing pattern. Use pin and chalk method or dressmaker's tracing paper and wheel.

To Quick Mark:

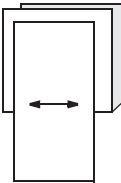
• Snip edge of fabric to mark notches, ends of fold lines and center lines.

• Pin mark dots.

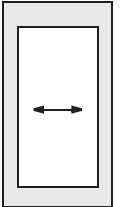


SPECIAL CUTTING NOTES

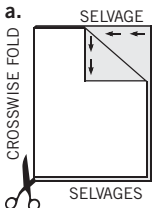
★ If layout shows a piece extending past fold, cut out all pieces except piece that extends.



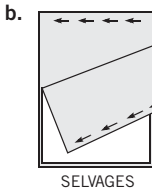
Open out fabric to single thickness. Cut extending piece on RIGHT side of fabric in position shown.



✱ Mark small arrows along both selvages indicating direction of nap or design. Fold fabric crosswise with RIGHT sides together, and cut along fold (a).



Turn one fabric layer around so arrows on both layers go in the same direction. Place RIGHT sides together (b).



Cutting Layouts



WRONG SIDE OF FABRIC



RIGHT SIDE OF FABRIC



PATTERN PIECE WITH PRINTED SIDE UP



PATTERN PIECE WITH PRINTED SIDE DOWN



SEE SPECIAL CUTTING NOTES

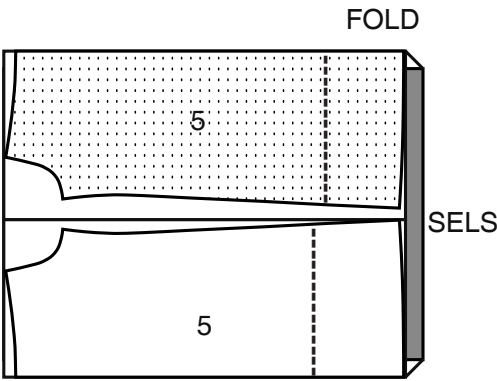
POSITION OF PATTERN PIECES MAY VARY SLIGHTLY ACCORDING TO YOUR PATTERN SIZE

LINING A,B,C

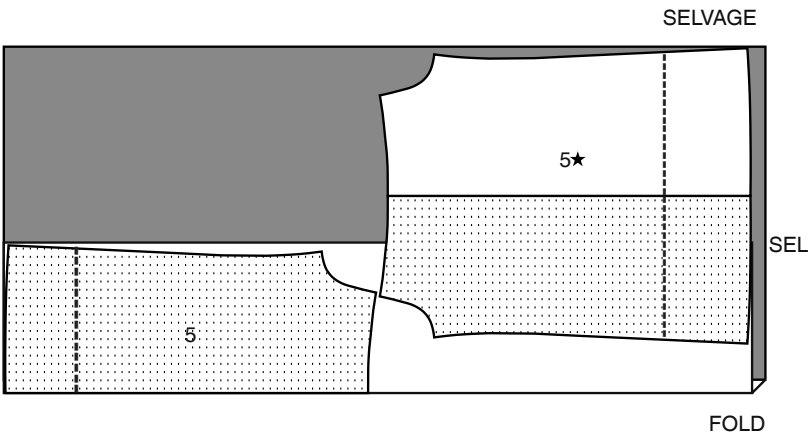
USE PIECE 5

NOTE: DASHED LINE SHOWN ON PATTERN PIECES IN CUTTING LAYOUTS INDICATES CUTTING LINE FOR SHORTER LENGTH

45" (150CM) WITH NAP
SIZES 3 4 5 6



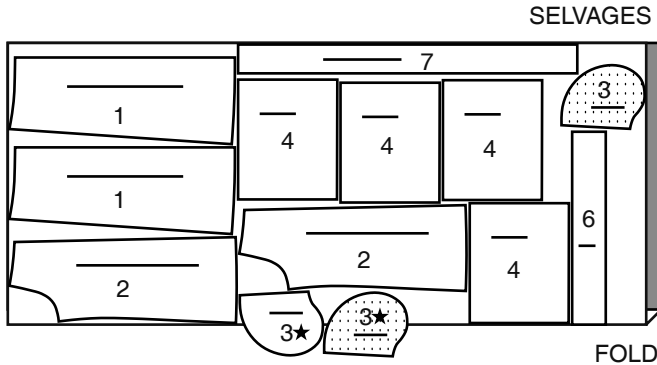
45" (150CM) WITH NAP
SIZES 7 8 10 12 14



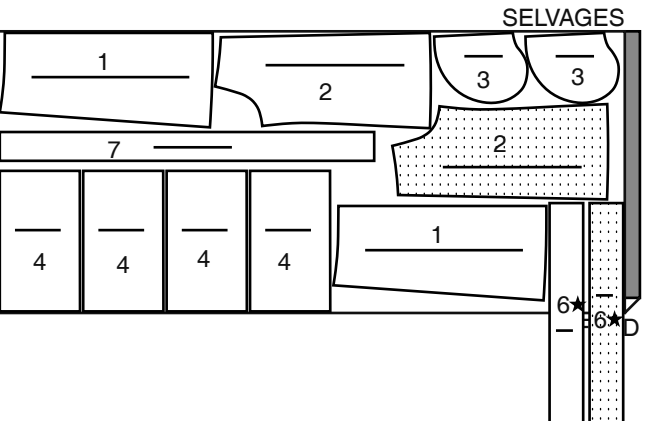
DRESS A

USE PIECES 1 2 3 4 6 7

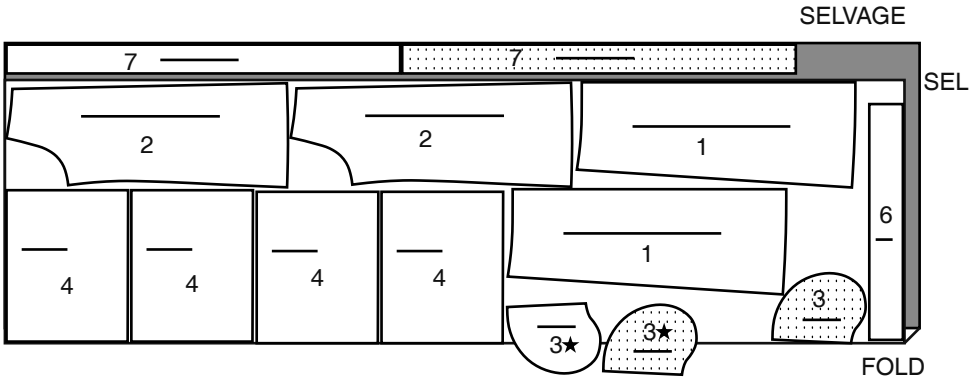
45" (115CM) WITH NAP
SIZES 3 4 5 6



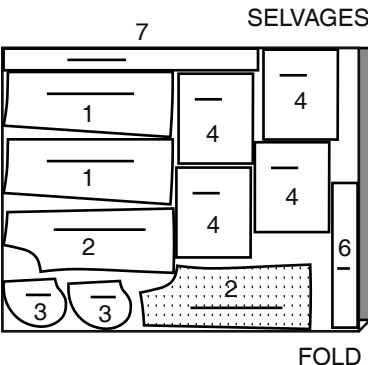
45" (115CM) WITH NAP
SIZES 7 8



45" (115CM) WITH NAP
SIZES 10 12 14



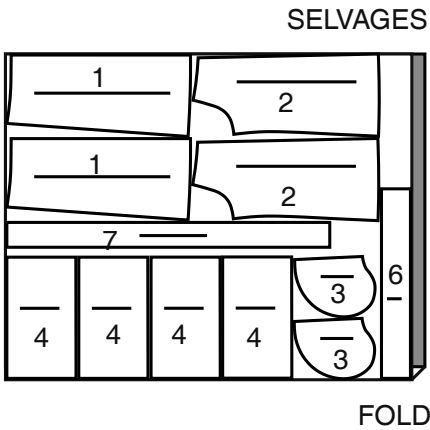
60" (150CM) WITH NAP
SIZES 3 4 5 6



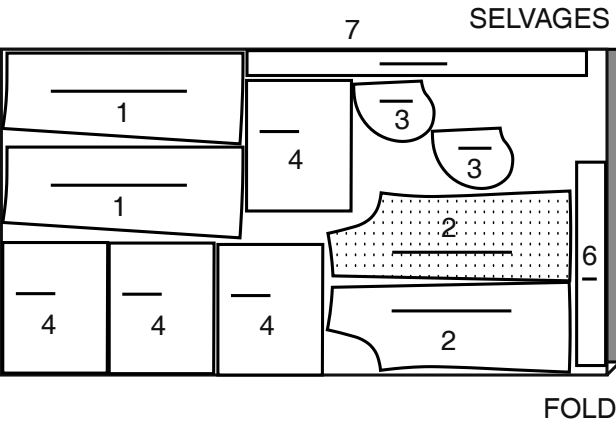
CUTTING LAYOUTS CONTINUED ON PAGE 2

S3146

60" (150CM)
WITH NAP
SIZES 7 8

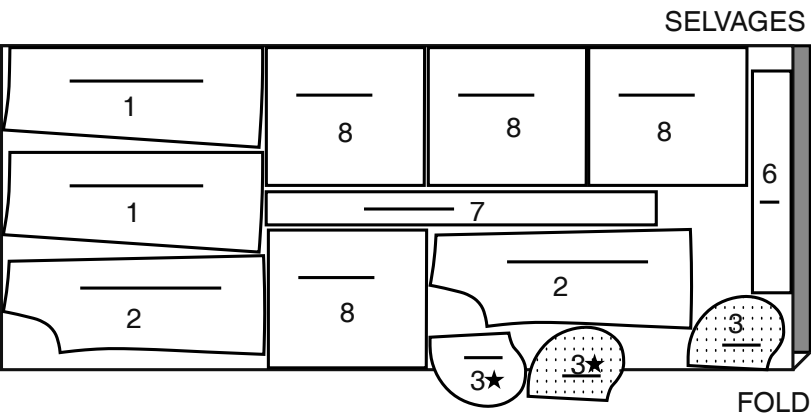


60" (150CM)
WITH NAP
SIZES 10 12 14

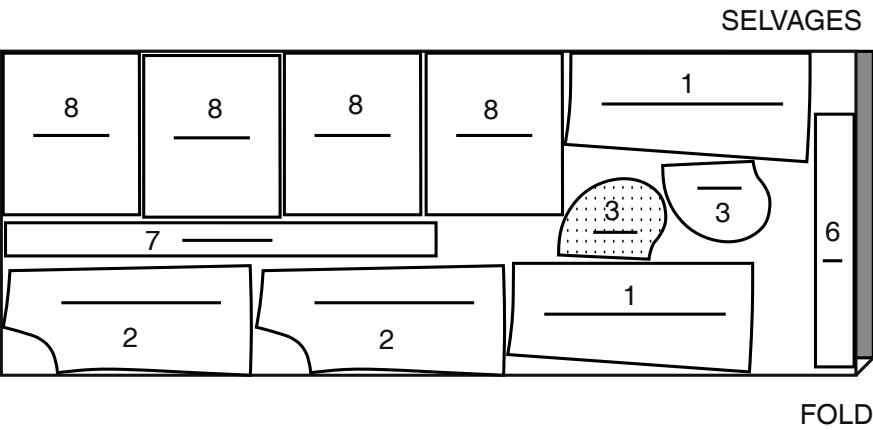


DRESS B
USE PIECES 1 2 3 6 7 8

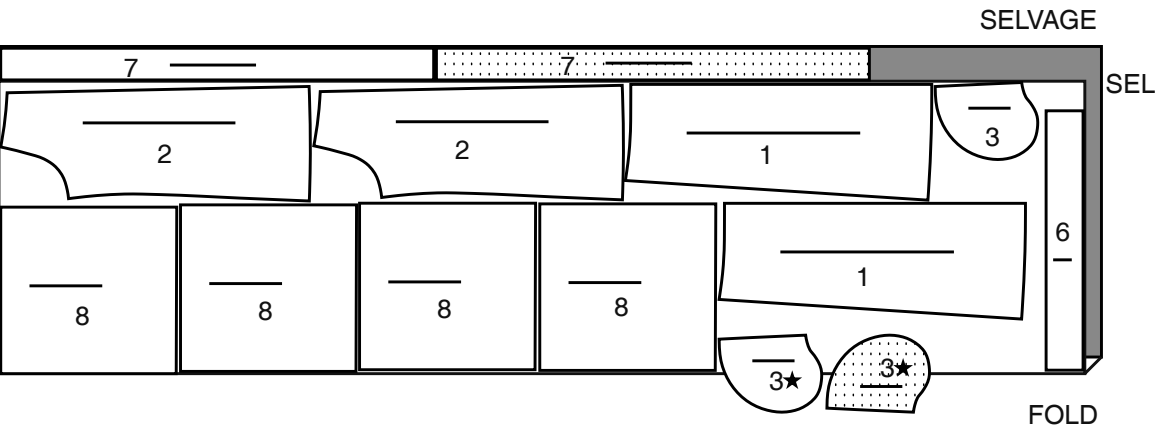
45" (115CM)
WITH NAP
SIZES 3 4 5 6



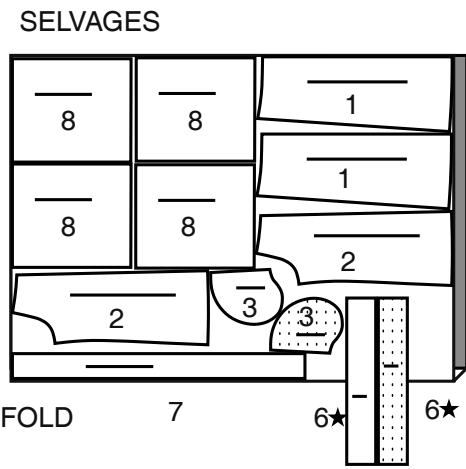
45" (115CM)
WITH NAP
SIZES 7 8



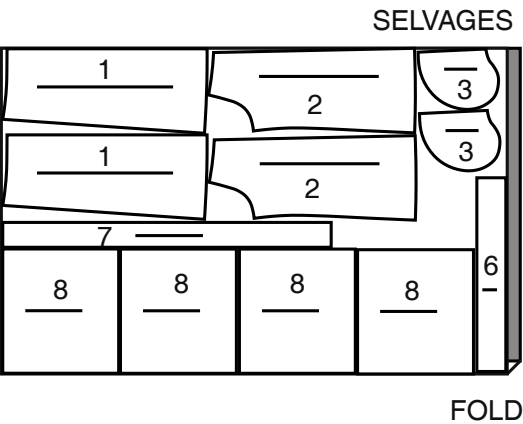
45" (115CM)
WITH NAP
SIZES 10 12 14



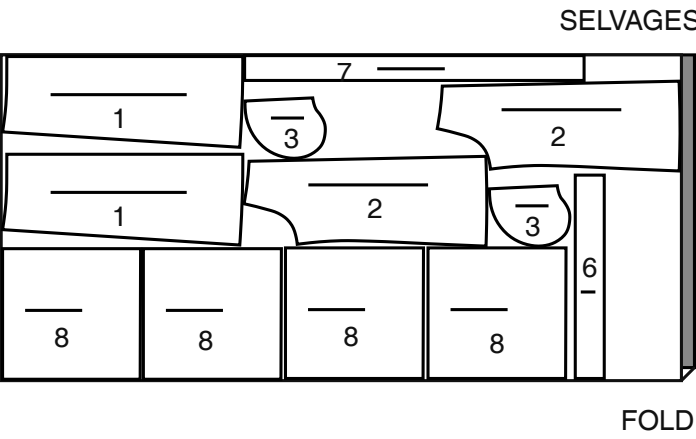
60" (150CM)
WITH NAP
SIZES 3 4 5 6



60" (150CM)
WITH NAP
SIZES 7 8 10



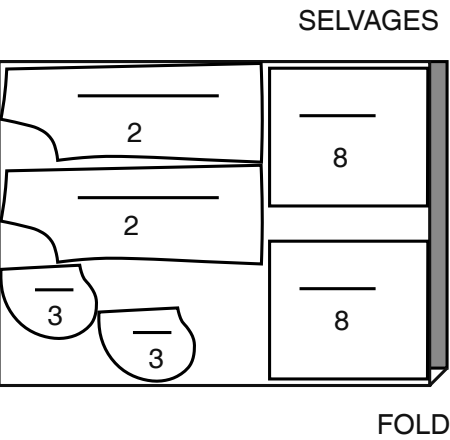
60" (150CM)
WITH NAP
SIZES 12 14



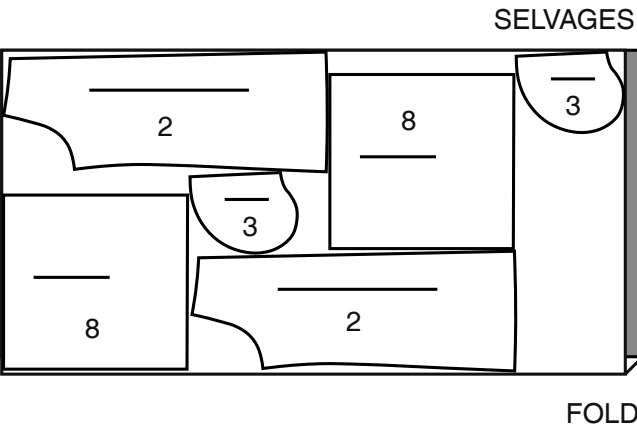
DRESS C

USE PIECES 2 3 8

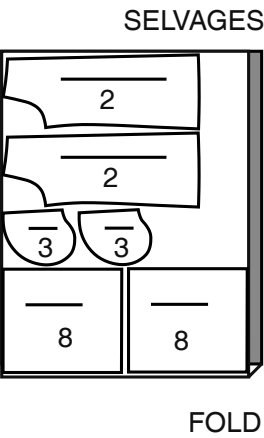
45" (115CM)
WITH NAP
SIZES 3 4 5 6



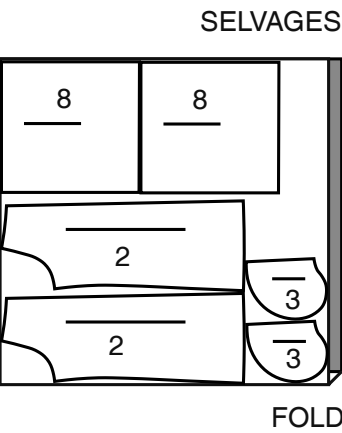
45" (150CM)
WITH NAP
SIZES 7 8 10 12 14



60" (150CM)
WITH NAP
SIZES 3 4 5 6



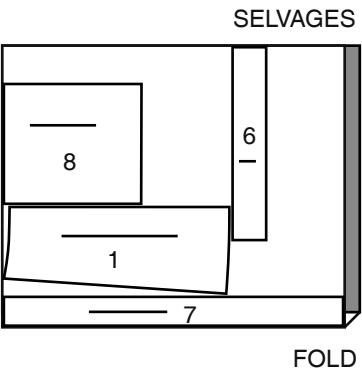
60"" (150CM)
WITH NAP
SIZES 7 8 10 12 14



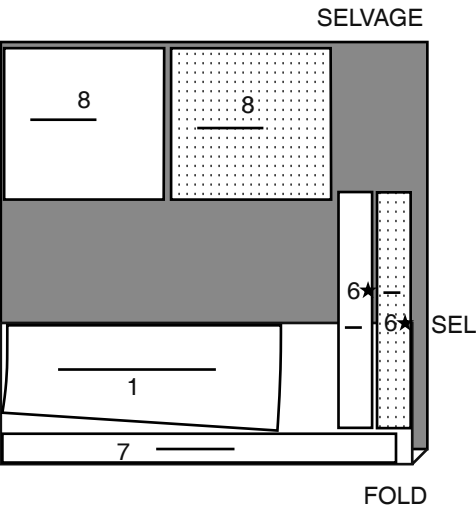
CONTRAST 1C

USE PIECES 1 6 7 8

45"/60" (115CM/150CM)
WITH NAP
SIZES 3 4 5 6



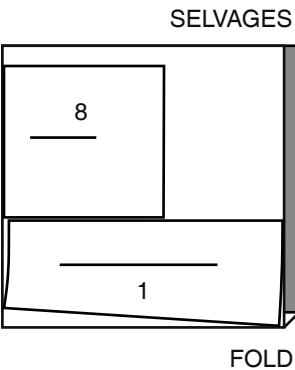
45"/60" (115CM/150CM)
WITH NAP
SIZES 7 8 10 12 14



CONTRAST 2C

USE PIECES 1 8

45"/60" (115CM/150CM)
WITH NAP
ALL SIZES



SEWING TUTORIALS



Build your skills viewing short, easy-to-follow videos at [simplicity.com/sewingtutorials](https://www.simplicity.com/sewingtutorials)

Sewing Directions

FABRIC KEY	RIGHT SIDE	WRONG SIDE	INTERFACING	LINING	LINING
				RIGHT SIDE	WRONG SIDE

Read **General Directions** on page 1 before you begin.
Sewing methods in **BOLD TYPE** have Sewing Tutorial Video available.
Scan QR CODE to watch videos:

- EDGE STITCH** – See Machine Stitches: “how to sew an edgestitch” video.
- GATHER** - See Gathering: “sewing two row gathers” video.
- NARROW HEM** – See Hems: “sewing narrow hems” video.
- SLIP STITCH** – See Hand Stitching: “how to slip stitch” video.
- TACK** – See Hand Stitching: “how to tack” video.
- TRIM SEAM** – See Seams: “how to trim, clip and layer seams” video.
- UNDERSTITCH** – See Machine Stitches: “how to understitch” video.
- SLIP STITCH** – See Hand Stitching: “how to slip stitch” video.

DRESS A, B, C

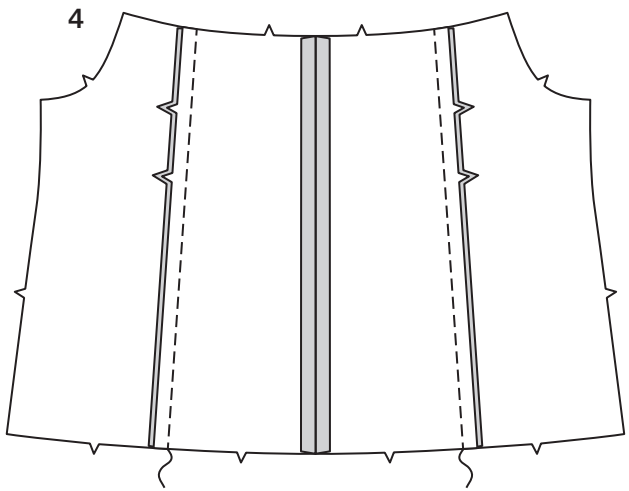
NOTE: Under each sub-heading, View A will be shown unless otherwise indicated.

FRONT AND BACK

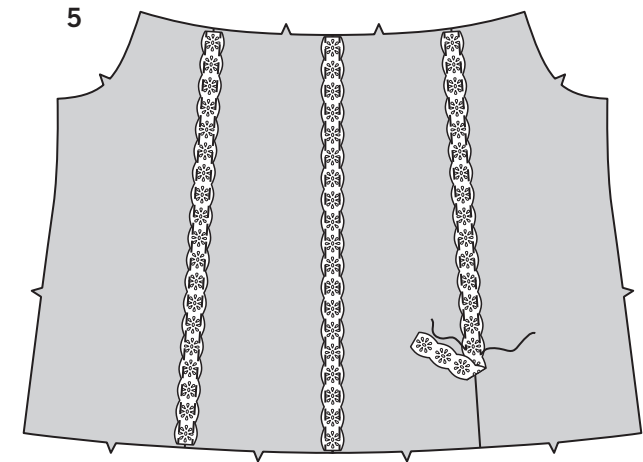
- 1. Construct front as follows:
With **RIGHT** sides together, stitch center front seam of **FRONT AND BACK (1)** sections.

- 2. With **RIGHT** sides together, stitch **SIDE FRONT AND BACK (2)** sections to each side of front, matching notches.

- 3. Construct back as follows:
With **RIGHT** sides together, stitch center back seam of remaining front and back sections.



- 4. With **RIGHT** sides together, stitch side front and back sections to each side of back, matching notches.



- 5. **VIEW B, C-** Cut six pieces of trim the length of front and back seams. On **OUTSIDE**, pin trim to front and back, centering over seams. **EDGE STITCH** trim in place.

POCKETS

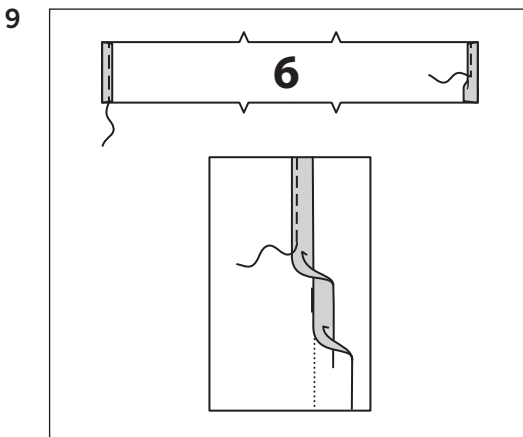
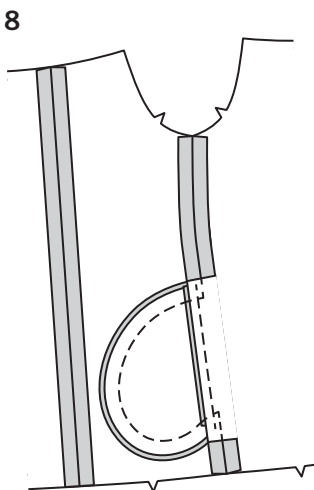
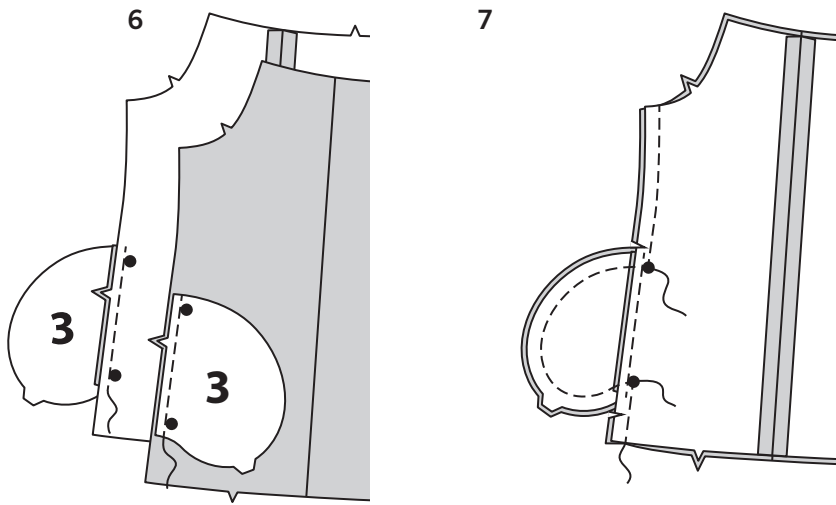
- 6. Stitch one **POCKET (3)** section to front and back at each side in 1/4”(6mm) seam. Press seams toward pockets.

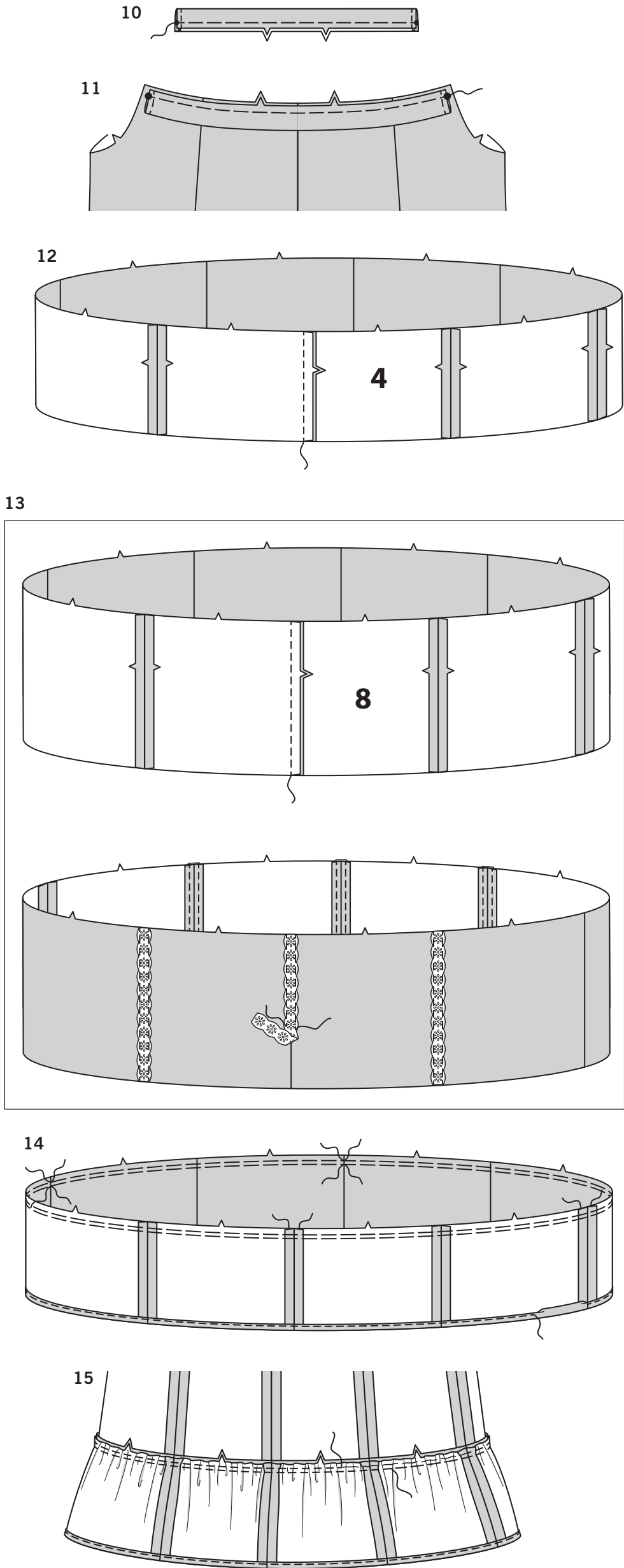
- 7. Stitch front and back together at sides, leaving open between large dots. Stitch pocket edges together to side seams. Clip back seam allowances above and below pockets.

- 8. Turn pockets toward front along seamlines; press.

CASING

- 9. **NARROW HEM** side edges of **CASING (6)** sections.

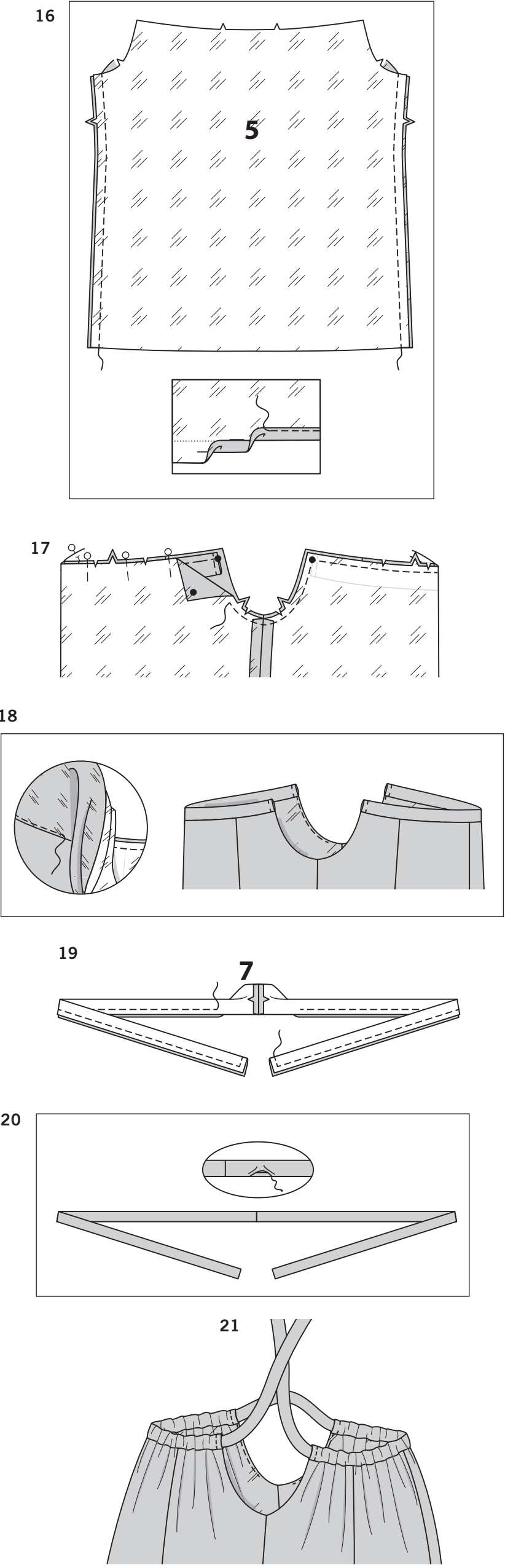




10. Fold casing in half lengthwise with WRONG sides together, Baste raw edges together.
11. On OUTSIDE, pin casings to upper edge of front and back matching notches and small dots. Baste in a 3/8”(1cm) seam.

RUFFLES

12. **VIEW A-**
With RIGHT sides together, stitch ends of RUFFLE (4).
13. **VIEW B, C-**
With RIGHT sides together, stitch ends of RUFFLE (8). Cut eight pieces of trim the length of front and back ruffle seams, excluding side seams. On OUTSIDE, pin trim to front and back seams, centering over seams. **EDGE STITCH** trim in place.
14. **VIEW A, B, C-**
GATHER upper edge of ruffle, breaking stitching at center front, center back and side seams. **NARROW HEM** lower edge of ruffle.
15. With RIGHT sides together, pin ruffle to lower edge of dress, matching notches and seams. Adjust gathers to fit. Baste. Stitch. Press seam up.



LINING

16. Stitch FRONT AND BACK LINING (5) sections at sides. **NARROW HEM** lower edge of lining.
17. With RIGHT sides together, pin lining to upper edge of dress, matching notches and small dots. Stitch upper and armhole edges in a 3/8”(1cm) seam, pivoting with needle in fabric at small dots, keeping casing edges free. **TRIM SEAM**, clip curves.
18. **UNDERSTITCH** lining as far as possible. Turn lining to INSIDE. Press. **TACK** lining at side seams, if you prefer.

FINISHING

19. With RIGHT sides together, stitch notched ends of SHOULDER STRAP (7) in a 3/8" (1cm) seam. Fold shoulder strap in half lengthwise, with RIGHT sides together. Stitch outer edge, in a 3/8" (1cm) seam leaving an opening on long edge, large enough for turning. **TRIM SEAM**.
20. Turn shoulder strap RIGHT side out. Press. **SLIPSTITCH** opening closed.
21. Feed end of shoulder strap through openings in casings, having ends extended evenly on RIGHT side, pulling up front and back neck edge as desired.
- Tie strap in a bow while wearing. To secure permanently, hand-sew along center front and center back of strap.**