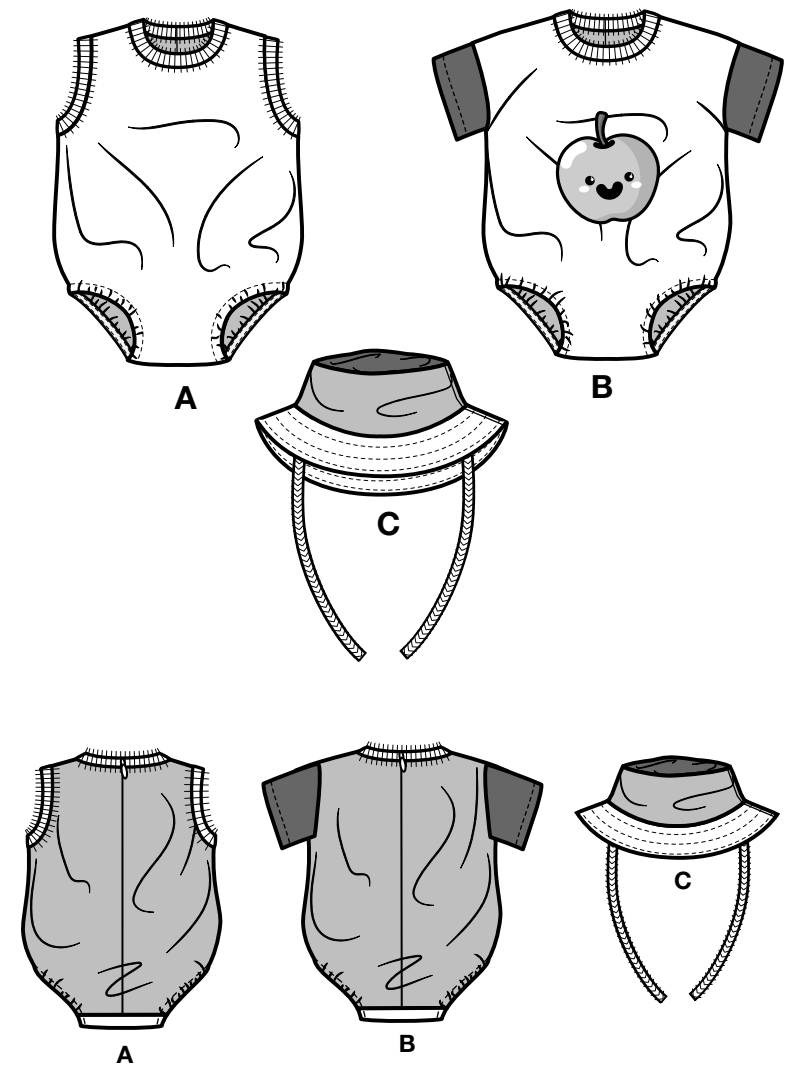
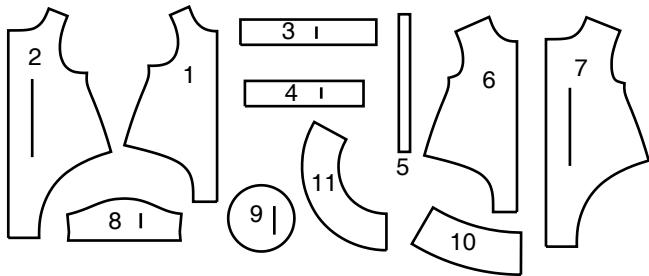


Thank you for purchasing this Simplicity pattern.
We made every effort to provide you with a high quality product.



11 PIECES



- 1 Front-A
2 Back-A
3 Neckband-A,B
4 Armhole Band-A
5 Elastic Guide for Leg-A,B
6 Front-B
7 Back-B
8 Sleeve-B
9 Top-C
10 Crown-C
11 Brim-C



www.simplicity.com



info@simplicity.com



1-888-588-2700

General Directions

The Pattern

SYMBOLS

- ↔ GRAIN LINE Place on straight grain of fabric parallel to selvage
- ↓ PLACE SOLID LINE on fold of fabric.
- CENTER FRONT OR BACK of garment.
- ▽▽ NOTCHES
- DOTS
- CUTTING LINE
- == LENGTHEN OR SHORTEN LINES

SEAM ALLOWANCE: 5/8" (1.5cm) unless otherwise stated is included but not printed on MULTI-SIZE PATTERNS. Mark your size with colored felt tip pen. See chart on tissue for how to use MULTI-SIZE PATTERNS.

ADJUST IF NEEDED

Make adjustments before placing pattern on fabric.

TO LENGTHEN: Cut pattern between lengthen or shorten lines. Spread pattern evenly, the amount needed and tape to paper.

TO SHORTEN: At lengthen or shorten lines, make an even pleat taking up amount needed. Tape in place.

When lengthen or shorten lines are not given, make adjustments at lower edge of pattern.

Cutting/Marking

BEFORE CUTTING:

PRESS pattern pieces with a warm dry iron. PRE-SHRINK fabric by pre-washing washables or steam-pressing non-washables.

CIRCLE your cutting layout.

PIN pattern to fabric as shown in Cutting Layouts.

• FOR DOUBLE THICKNESS: Fold fabric with RIGHT sides together.

• FOR SINGLE THICKNESS: Place fabric RIGHT side up.

• FOR PILE, SHADED OR ONE WAY DESIGN FABRICS: Use "with nap" layouts

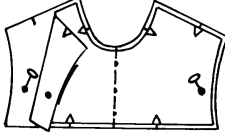
AFTER CUTTING:

Transfer markings to WRONG side of fabric before removing pattern. Use pin and chalk method or dressmaker's tracing paper and wheel.

To Quick Mark:

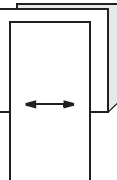
• Snip edge of fabric to mark notches, ends of fold lines and center lines.

• Pin mark dots.



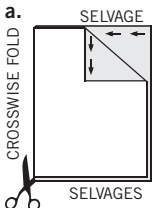
SPECIAL CUTTING NOTES

★ If layout shows a piece extending past fold, cut out all pieces except piece that extends.

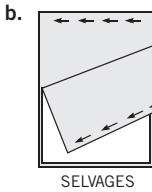


Open out fabric to single thickness. Cut extending piece on RIGHT side of fabric in position shown.

✱ Mark small arrows along both selvages indicating direction of nap or design. Fold fabric crosswise with RIGHT sides together, and cut along fold (a).



Turn one fabric layer around so arrows on both layers go in the same direction. Place RIGHT sides together (b).



Cutting Layouts



WRONG SIDE OF FABRIC



RIGHT SIDE OF FABRIC



PATTERN PIECE WITH PRINTED SIDE UP



PATTERN PIECE WITH PRINTED SIDE DOWN



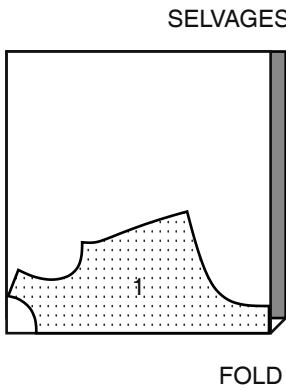
★ SEE SPECIAL CUTTING NOTES

POSITION OF PATTERN PIECES MAY VARY SLIGHTLY ACCORDING TO YOUR PATTERN SIZE

BODYSUIT A

USE PIECE 1

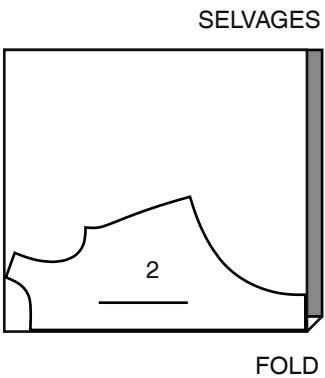
45"/60" (115CM/150CM)
WITH NAP
ALL SIZES



CONTRAST 1A (BACK)

USE PIECE 2

45"/60" (115CM/150CM)
WITH NAP
ALL SIZES



CONTRAST 2A (NECKBAND AND ARMHOLE BAND)

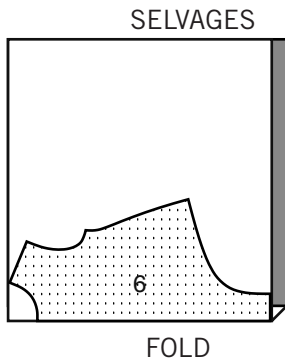
CUT ONE OF PIECE 3 AND TWO OF PIECE 4 FROM REMNANT.

SEE SEWING DIRECTIONS FOR HOW TO CUT.

BODYSUIT B

USE PIECE 6

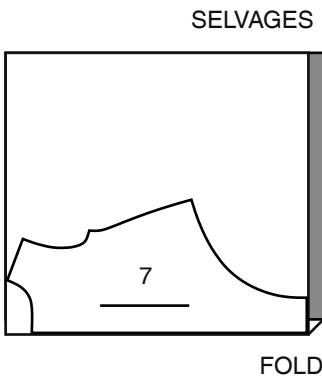
45"/60" (115CM/150CM)
WITH NAP
ALL SIZES



CONTRAST 1B (BACK)

USE PIECE 7

45"/60" (115CM/150CM)
WITH NAP
ALL SIZES



CONTRAST 2B (NECKBAND)

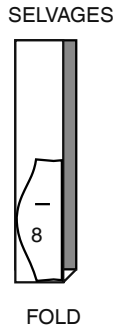
CUT ONE OF PIECE 3 FROM REMNANT.

SEE SEWING DIRECTIONS FOR HOW TO CUT.

CONTRAST 3B SLEEVES

USE PIECE 8

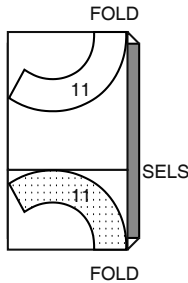
45"/60" (115CM/150CM)
WITH NAP
ALL SIZES



HAT C

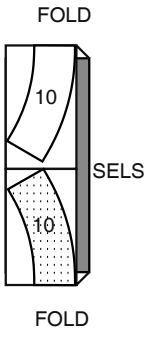
USE PIECE 11

45"/60" (115CM/150CM)
WITH NAP
ALL SIZES



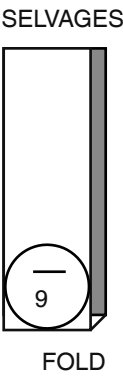
CONTRAST 1C (FRONT AND BACK CROWN)
USE PIECE 10

45"/60" (115CM/150CM)
WITH NAP
ALL SIZES



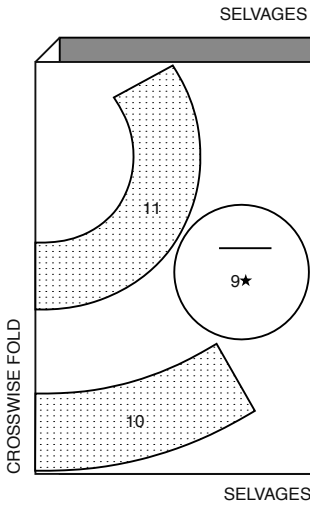
CONTRAST 2C (TOP CROWN, CHIN STRAP)
USE PIECE 9

45"/60" (115CM/150CM)
WITH NAP
ALL SIZES



INTERFACING C
USE PIECES 9 10 11

20" (51CM)
ALL SIZES



SEWING TUTORIALS



Build your skills viewing short, easy-to-follow videos at
simplicity.com/sewingtutorials

Sewing Directions

FABRIC KEY



Sewing methods in **BOLD TYPE** have Sewing Tutorial Video available.
Scan QR CODE to watch videos:

- EDGE STITCH** – See **Machine Stitches: “how to sew an edgestitch”** video.
- SLIP STITCH** – See **Hand Stitching: “how to slip stitch”** video.
- TRIM SEAM** – See **Seams: “how to trim, clip and layer seams”** video.
- UNDERSTITCH** – See **Machine Stitches: “how to understitch”** video.

PATTERN PIECES WILL BE IDENTIFIED BY NUMBERS THE FIRST TIME THEY ARE USED.

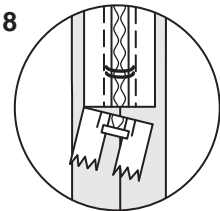
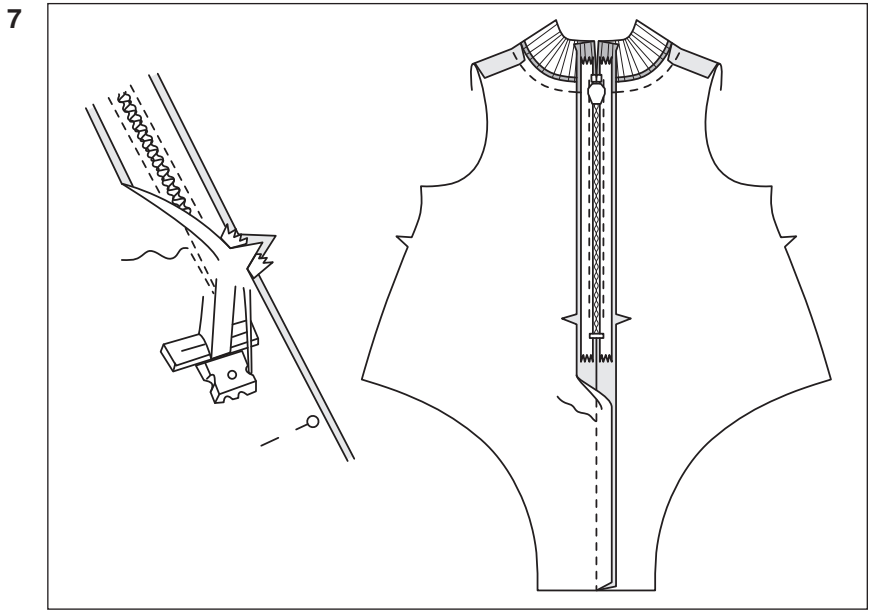
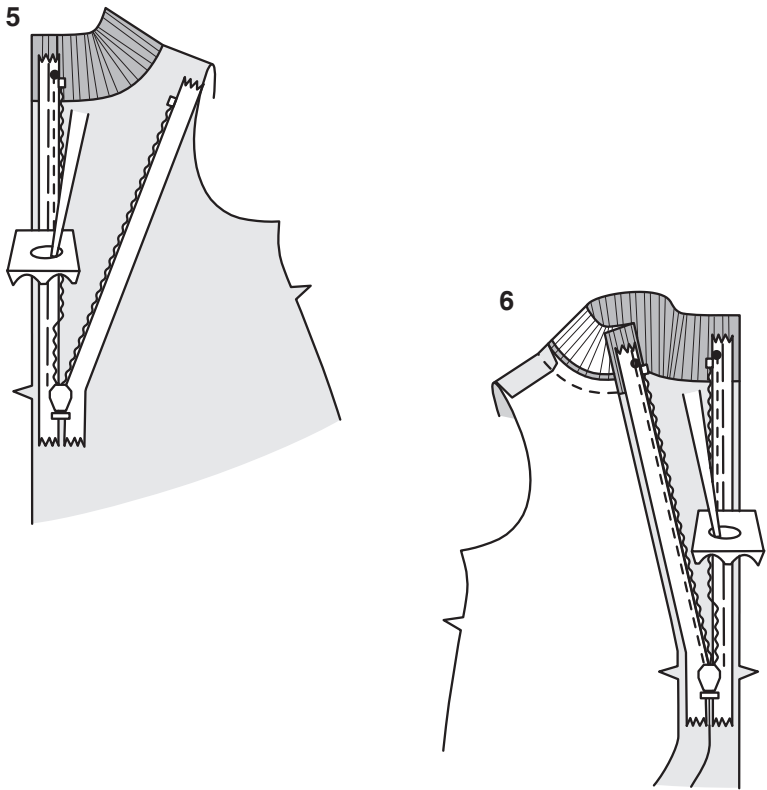
STITCH 5/8” (1.5CM) SEAMS WITH RIGHT SIDES TOGETHER UNLESS OTHERWISE STATED.

BODYSUIT A, B

- 1. FOR VIEW A**– With **RIGHT** sides together and raw edges even, pin **FRONT** (1) to **BACK** (2) at shoulder edges, matching notches. Stitch.
- 2. FOR VIEW B**– With **RIGHT** sides together and raw edges even, pin **FRONT** (6) to **BACK** (7) at shoulder edges, matching notches. Stitch.

NECKBAND AND ZIPPER A, B

- 3.** Open out rib knit section, if necessary. Pin **WRONG** side **NECKBAND** (3) tissue to **RIGHT** side of rib knit strip with grainline arrow on tissue in direction of fabric ribs. Transfer markings. Cut out piece.
- 4.** With **RIGHT** sides together and raw edges even, pin neckband to bodysuit along neck edge, matching centers and notches, placing small dots at shoulder seams. Stitch in a 3/8” (1cm) seam, stretching the band to fit. Press seam toward bodysuit, pressing neckband out.

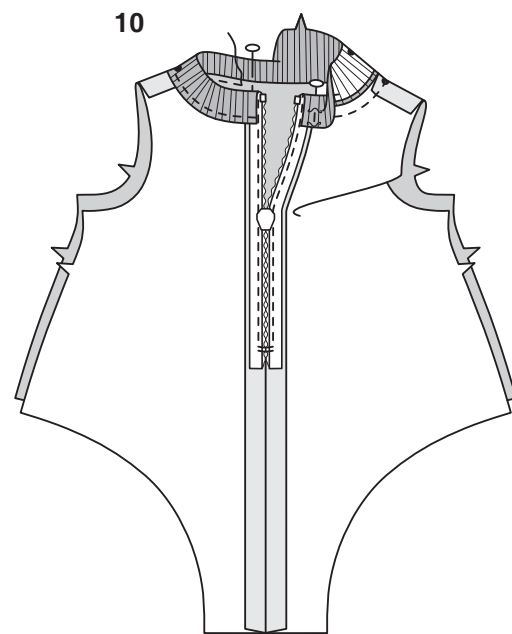
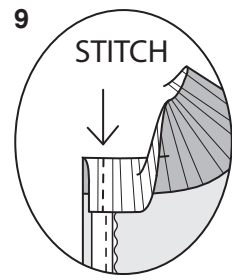


NOTE: *Stitch the invisible zipper using an invisible zipper foot. Before you begin, be sure to line up your needle with the center of the invisible zipper foot or you may break your needle. When the coils are to the **LEFT** of the raw edge use the **LEFT** groove and when the coils are to the **RIGHT** of the raw edge use the **RIGHT** groove.*

NOTE: *The zipper may be longer than the zipper opening and will be adjusted after the zipper is inserted.*

- 5.** Open the zipper and press the tape flat on the **WRONG** side unrolling the coils. Do not press the coils. (Use a low iron setting.) On **OUTSIDE**, pin **RIGHT** side of the zipper face down on the **RIGHT** side of the zipper opening. Have the coil along the seam line, the tape within the seam allowance and the top stop at small dot, as shown. Hand-baste along center of the tape. Position zipper foot at the top of the zipper with **RIGHT** groove of the foot over coil. Stitch along tape to the notch. Back-stitch to reinforce.
- 6.** Pin the remaining half of the zipper to the **LEFT** side of the zipper opening in same manner. Make sure the upper and lower edges of the bodysuit are even. Hand-baste along the center of the tape. Position zipper foot at the top of the zipper with **LEFT** groove over the coil. Stitch along tape to the notch. Back-stitch to reinforce.
- 7.** Close zipper and check that it is invisible from the **OUTSIDE**. Pull the free ends of the zipper tape away from the seam allowance. Pin remaining center back seam together below zipper. Position zipper foot all the way to the **LEFT** so the needle goes down through the outer notch of the foot. Start stitching seam 1/4” (6mm) above lowest stitch and slightly to the **LEFT**. Stitch seam for about 3” (7.5cm). Stitch remainder of seam using your regular presser foot.

- 8.** If the zipper is longer than the opening, using a strong thread, hand-sew a few small stitches across ends of coils at end of opening. Trim away lower end of zipper tape to within 5/8” (1.5cm) of hand-stitches. If you prefer, open out each seam allowance at end of zipper and stitch tape to seam allowance.



9. Open out center back opening edges of bodysuit, rolling the zipper teeth away from the opening edge. Fold ends of neckband facing in half, lengthwise, with RIGHT sides together (over zipper). Pin back opening edges together. Using an adjustable zipper foot, stitch 1/2" (1.3cm) from back edges, keeping zipper teeth free. Trim corners. Do not trim center back edges.

10. Turn facing and back edges to INSIDE, rolling zipper teeth back in place; press, pressing neck band in half, lengthwise, bringing small dots and notches together. Pin, placing pins on OUTSIDE. On OUTSIDE, **EDGESTITCH** bodysuit a scant 1/8" (6mm) from seam, catching in raw edge of facing on the INSIDE. **TRIM SEAM.**

ARMHOLE A

11. With RIGHT sides together and raw edges even, pin front to back at side edges. Stitch.

12. Open out rib knit section, if necessary. Fold rib knit section in half, lengthwise, with WRONG sides together. Pin RIGHT side ARMHOLE BAND (4) tissue to RIGHT side of rib knit strip with grainline arrow on tissue in direction of fabric ribs. Transfer markings. Cut out pieces.

13. Stitch notched end of armhole band. **TRIM SEAM.** Fold band in half lengthwise, with WRONG sides together, matching small dots and notches; press. Pin.

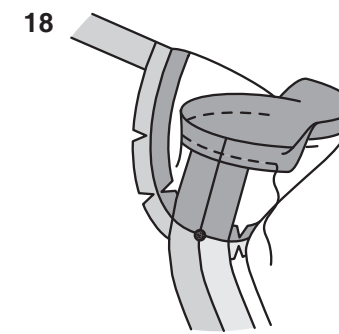
14. On OUTSIDE, pin band to armhole edge, placing small dot at shoulder seam and matching side seams and notches. Stitch in a 3/8" (1cm) seam, stretching the band to fit. Stitch again 1/8" (3mm) away from first stitching within the seam allowance. Trim seam close to second stitching.

15. Press seam toward garment, pressing band out. On OUTSIDE, **EDGESTITCH** bodysuit a scant 1/8" (6mm) from seam.

SLEEVE B

16. With RIGHT sides together, pin SLEEVE (8) to armhole edge with center small dot at shoulder seam, matching notches and remaining small dots. Stitch in a 3/8" (1cm) seam. Clip curves, if necessary. Press seam open.

17. Pin front to back at entire underarm edge, matching small dots and notches. Stitch.



18. Press up 3/4" (2cm) hem allowance on sleeve. Turn under raw edge 1/4" (6mm). Stitch close to inner pressed edge.
OR if you prefer, stitch 1/4" (6mm) from raw edge and finish with, overcast, overlock, or zigzag stitching. Press up 3/4" (2cm) hem allowance on sleeve. Stitch 1/2" (1.3cm) from pressed edge.

CONTINUE AS FOLLOWS FOR BOTH VIEWS

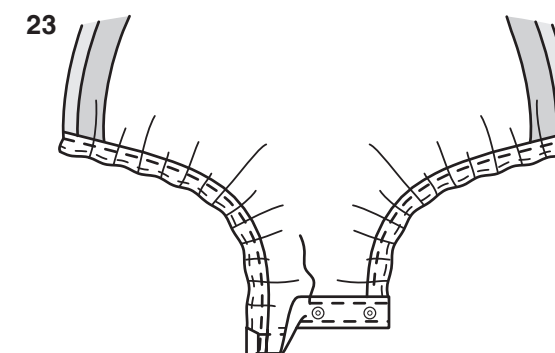
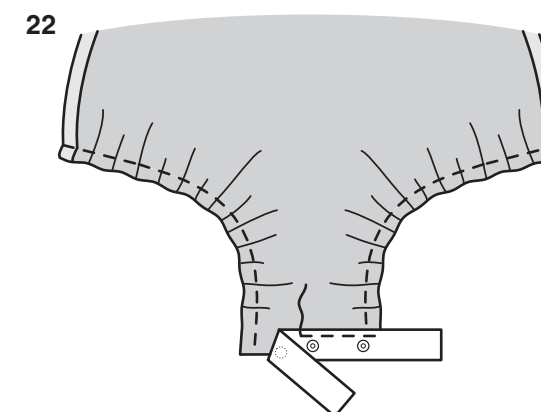
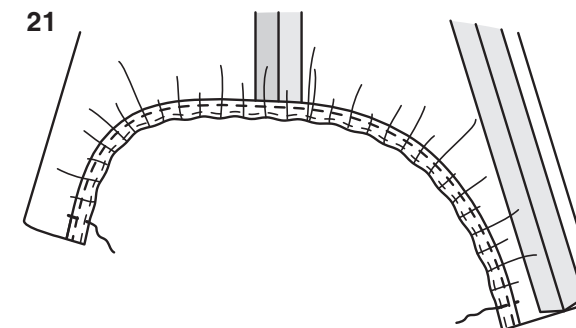
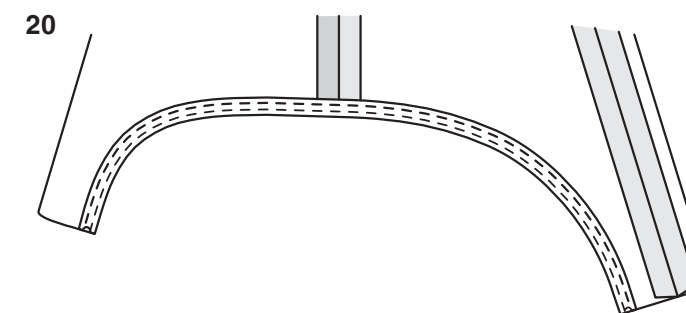
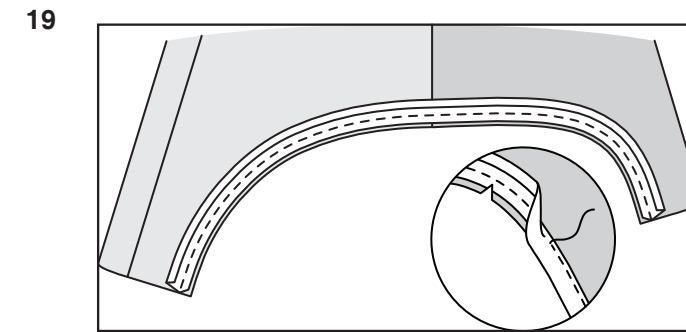
19. Cut a piece of single fold bias tape the length of each leg edge. Open out one edge; press. On OUTSIDE, pin tape to leg edge with raw edge of tape 1/8" (3mm) from raw edge of bodysuit. Stitch in a 3/8" (1cm) seam. **UNDERSTITCH** the tape.

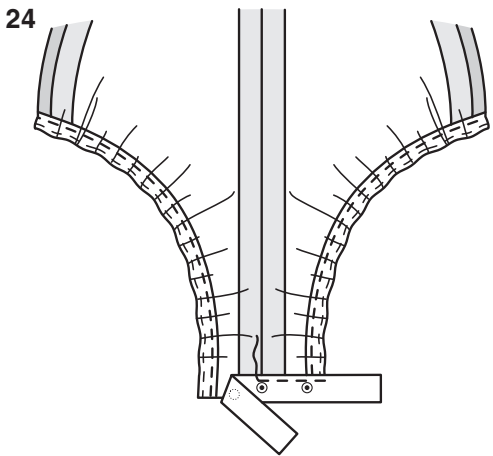
20. Turn tape to INSIDE; press. To form casing for elastic, stitch close to inner edge of tape.

21. Cut a piece of 1/4" (6mm) elastic the length of ELASTIC GUIDE FOR LEG (5). Attach a safety pin to one end and thread through casing, bringing raw edges even. Stitch across seam allowances, catching in elastic securely.

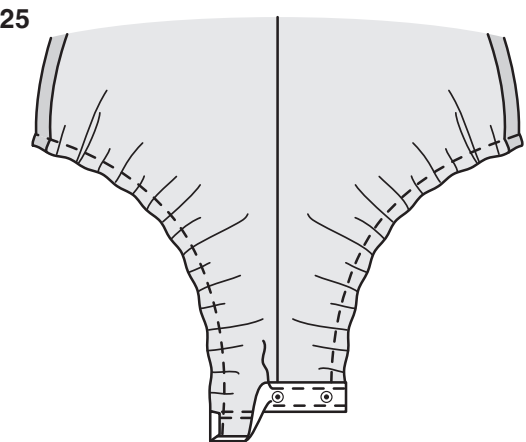
22. Cut a piece of snap tape the length of crotch edge, plus 1-1/2" (3.8cm). Separate the tape. On OUTSIDE, pin knob section of tape to seam allowance of front with upper edge along seam line, with lower edge and ends extending beyond garment, with snaps centered LEFT to RIGHT, adding tiny pleats if necessary. Stitch snap tape in place along upper edge, using an adjustable zipper foot.

23. Trim ends of tape, turn in. Turn seam allowance and tape to INSIDE; press. Stitch close to inner edge of tape.





24.On INSIDE, pin socket section of tape to seam allowance of back with upper edge along seam line, with lower edge and ends extending beyond garment, with snaps centered LEFT to RIGHT, adding tiny pleats if necessary, being careful that sockets will align with knobs on front. Stitch snap tape in place along upper edge, use an adjustable zipper foot.



25.Trim ends of tape, turn in. Turn seam allowance and tape to OUTSIDE; press. Stitch close to inner edge of tape.
FOR OPTIONAL APPLIQUÉ– On OUTSIDE, pin appliqué to center front of bodysuit, as shown on envelope, OR as you prefer. Fuse or sew in place following manufacturer's directions.

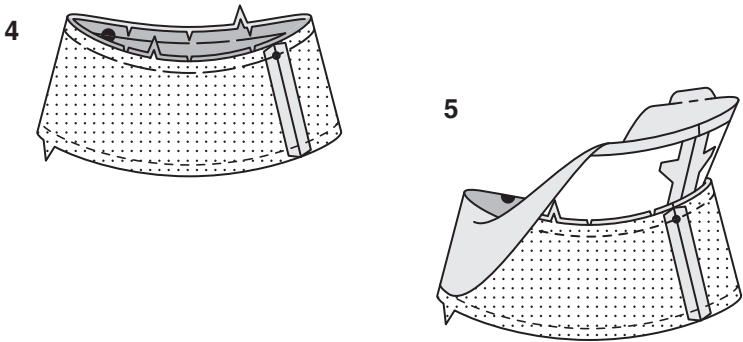
HAT C
INTERFACING

1. Pin interfacing to WRONG side of TOP (9), CROWN (10), and BRIM (11). Fuse in place following manufacturer's directions.

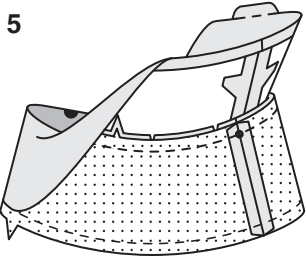
TOP AND CROWN

2. Pin TOP (9) sections with WRONG sides together and raw edges even. Baste along seamline.

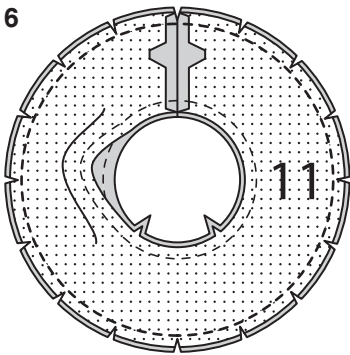
3. Stitch center back edges of CROWN (10) in a 3/8" (1cm) seam. Machine-stitch upper and lower edges of crown 3/8" (1cm) from raw edge.



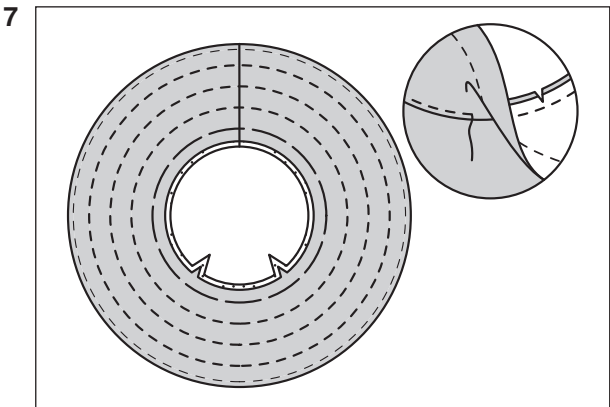
4



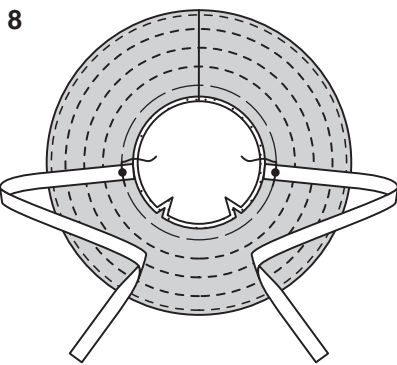
5



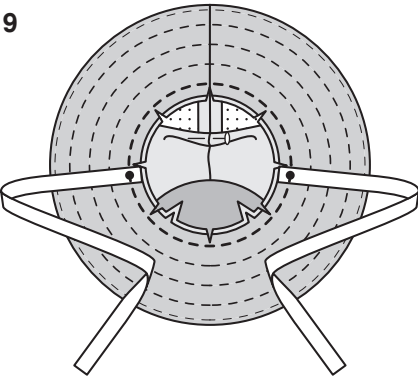
6



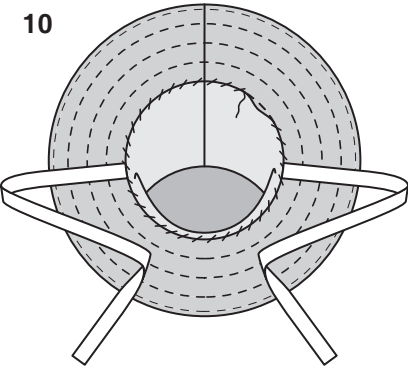
7



8



9



10

4. With RIGHT sides together and raw edges even, pin crown to top, matching centers, small dots, large dots, and notches, clipping raw edges to stitching as necessary to make the curve. Baste in a 3/8" (1cm) seam.

5. Stitch center back edges of crown facing in a 3/8" (1cm) seam. Machine-stitch upper and lower edges of facing 3/8" (1cm) from raw edge. Press under lower edge of facing along stitching. With RIGHT sides together and raw edges even, pin crown facing to top facing, matching centers, small dots, large dots, and notches, clipping raw edges to stitching as necessary to make the curve. Baste in a 3/8" (1cm) seam. Stitch as basted. Turn crown facing away from top; press.

BRIM

6. Machine-stitch upper and lower edges of BRIM (11) and brim facing 3/8" (1cm) from raw edge. Stitch center back edges of brim and brim facing in 3/8" (1cm) seams. With RIGHT sides together and raw edges even, pin brim to brim facing along outer edge. Stitch in a 3/8" (1cm) seam. **TRIM SEAM.**

7. UNDERSTITCH brim facing. Turn; press. Stitch along stitching lines. Baste raw edges together.

8. Cut two pieces of 1/2" (1.3cm) grosgrain ribbon 14" (36cm) long. On INSIDE, pin one end of each ribbon to brim over small dots with raw edges even. Baste.

9. Pin crown facing away from seamline. With RIGHT sides together and raw edges even pin brim to crown, matching centers, small dots and notches, clipping inner edge of brim to basting as necessary. Stitch. **TRIM SEAM.**

10.On INSIDE, pin pressed edge of crown facing to seam. **SLIPSTITCH** in place. Press hat, pressing out ribbon ties.