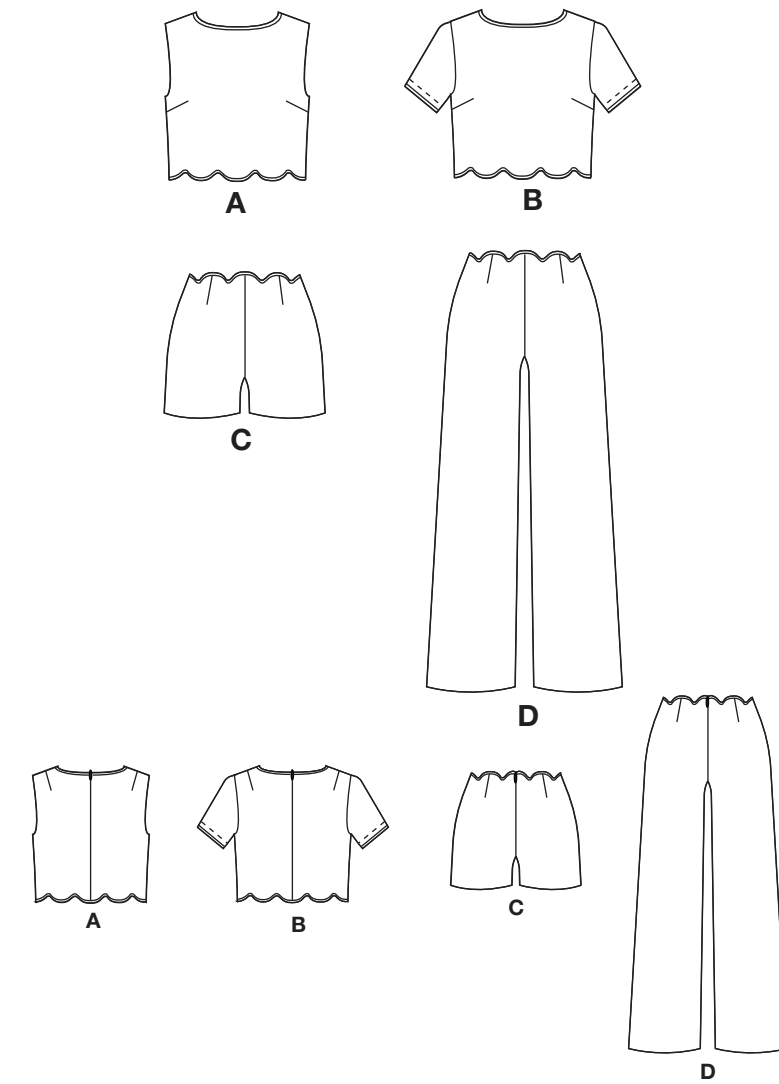
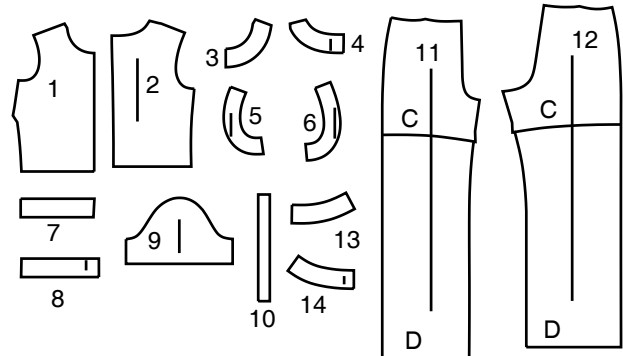


Thank you for purchasing this Simplicity pattern.
We made every effort to provide you with a high quality product.



14 PIECES



- 1 Front-A,B
- 2 Back-A,B
- 3 Front Facing-A,B
- 4 Back Facing-A,B
- 5 Front Armhole Facing-A
- 6 Back Armhole Facing-A
- 7 Lower Front Facing-A,B
- 8 Lower Back Facing-A,B
- 9 Sleeve-B
- 10 Sleeve Facing-B
- 11 Front-C,D
- 12 Back-C,D
- 13 Front Facing-C,D
- 14 Back Facing-C,D

| | | | | | | | | | | |
|----------|----|----|----|----|----|----|----|----|----|----|
| Sizes | 8 | 10 | 12 | 14 | 16 | 18 | 20 | 22 | 24 | 26 |
| European | 34 | 36 | 38 | 40 | 42 | 44 | 46 | 48 | 50 | 52 |

| | | | | | | | | | | | |
|--|-----|-----|-----|-----|-----|-----|-----|-----|-----|-----|------|
| FINISHED GARMENT MEASUREMENTS (Includes Design and Wearing Ease) | | | | | | | | | | | |
| A,B Bust | 36 | 37 | 38½ | 40½ | 42½ | 44½ | 46½ | 48½ | 50½ | 52½ | Ins. |
| A,B Waist | 34 | 35 | 36½ | 38½ | 40½ | 42½ | 44½ | 46½ | 48½ | 50½ | " |
| C,D Waist | 25½ | 26½ | 28 | 30 | 32 | 34 | 36 | 38 | 40 | 42 | " |
| C,D Hip | 37 | 38 | 39½ | 41½ | 43½ | 45½ | 47½ | 49½ | 51½ | 53½ | " |
| Width, each leg | | | | | | | | | | | |
| Shorts C | 22¾ | 23½ | 24½ | 25¾ | 27 | 28¾ | 29½ | 30¾ | 32 | 33¾ | Ins. |
| Pants D | 20¾ | 21 | 21¾ | 22¾ | 23¾ | 23¾ | 24¾ | 25¾ | 26¾ | 26¾ | " |
| Finished back length from base of neck | | | | | | | | | | | |
| Top A,B | 16¾ | 17 | 17¾ | 17¾ | 17¾ | 18 | 18¾ | 18¾ | 18¾ | 19 | Ins. |
| Finished side length from waist | | | | | | | | | | | |
| Shorts C | 13¾ | 13¾ | 13¾ | 14 | 14¾ | 14¾ | 14¾ | 15 | 15¾ | 15¾ | Ins. |
| Pants D | 42 | 42¾ | 42¾ | 42¾ | 43 | 43¾ | 43¾ | 43¾ | 44 | 44¾ | " |

General Directions

The Pattern

- SYMBOLS**
- GRAIN LINE Place on straight grain of fabric parallel to selvage
 - PLACE SOLID LINE on fold of fabric.
 - CENTER FRONT OR BACK of garment.
 - NOTCHES
 - DOTS
 - CUTTING LINE
 - LENGTHEN OR SHORTEN LINES

SEAM ALLOWANCE: 5/8" (1.5cm) unless otherwise stated is included but not printed on MULTI-SIZE PATTERNS. Mark your size with colored felt tip pen. See chart on tissue for how to use MULTI-SIZE PATTERNS.

ADJUST IF NEEDED

Make adjustments before placing pattern on fabric.

TO LENGTHEN: Cut pattern between lengthen or shorten lines. Spread pattern evenly, the amount needed and tape to paper.

TO SHORTEN: At lengthen or shorten lines, make an even pleat taking up amount needed. Tape in place.

When lengthen or shorten lines are not given, make adjustments at lower edge of pattern.

Cutting/Marking

BEFORE CUTTING:

PRESS pattern pieces with a warm dry iron. PRE-SHRINK fabric by pre-washing washables or steam-pressing non-washables.

CIRCLE your cutting layout.

PIN pattern to fabric as shown in Cutting Layouts.

• FOR DOUBLE THICKNESS: Fold fabric with RIGHT sides together.

• FOR SINGLE THICKNESS: Place fabric RIGHT side up.

• FOR PILE, SHADED OR ONE WAY DESIGN FABRICS: Use "with nap" layouts

AFTER CUTTING:

Transfer markings to WRONG side of fabric before removing pattern. Use pin and chalk method or dressmaker's tracing paper and wheel.

To Quick Mark:

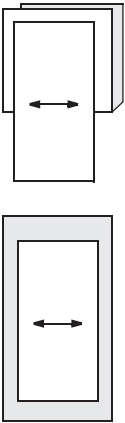
• Snip edge of fabric to mark notches, ends of fold lines and center lines.

• Pin mark dots.

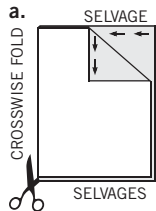


SPECIAL CUTTING NOTES

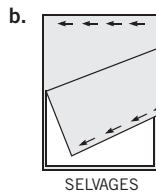
★ If layout shows a piece extending past fold, cut out all pieces except piece that extends.



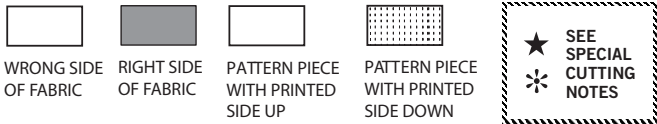
✱ Mark small arrows along both selvages indicating direction of nap or design. Fold fabric crosswise with RIGHT sides together, and cut along fold (a).



Turn one fabric layer around so arrows on both layers go in the same direction. Place RIGHT sides together (b).



Cutting Layouts

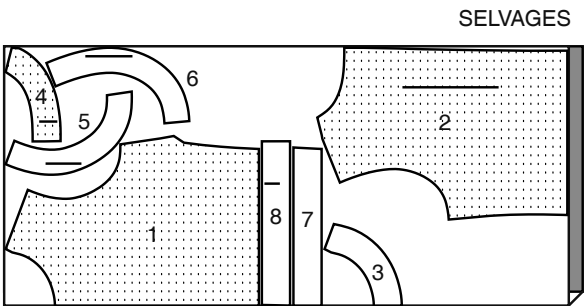


POSITION OF PATTERN PIECES MAY VARY SLIGHTLY ACCORDING TO YOUR PATTERN SIZE

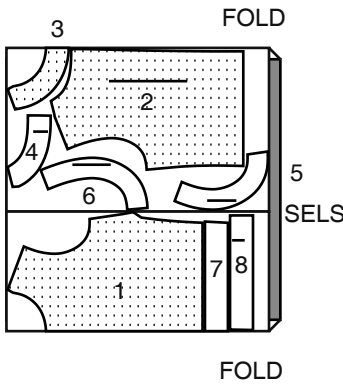
TOP A

USE PIECES 1 2 3 4 5 6 7 8

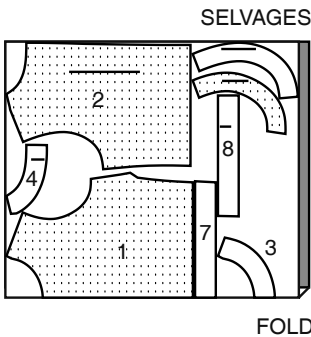
45" (115CM) WITH NAP ALL SIZES



60" (150CM) WITH NAP ALL SIZES



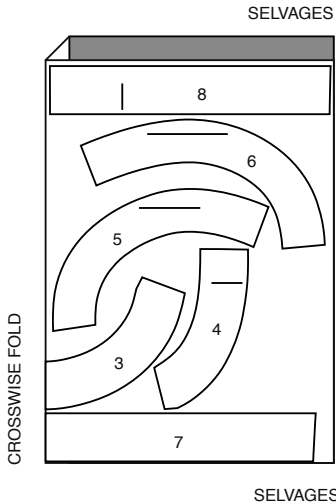
60" (150CM) WITH NAP SIZES 20 22 24 26



INTERFACING A

USE PIECES 3 4 5 6 7 8

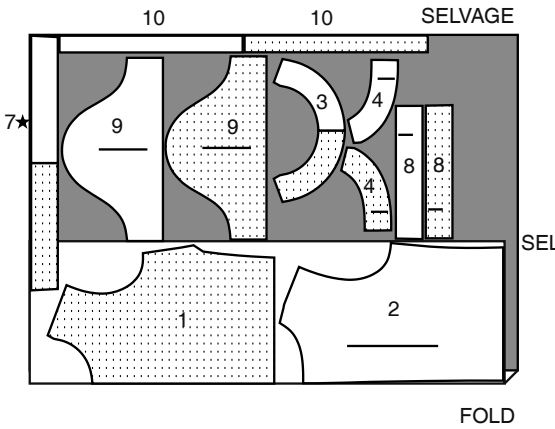
20" (51CM) ALL SIZES



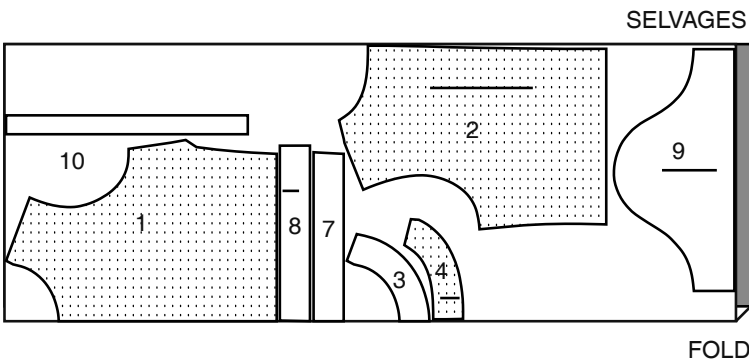
TOP B

USE PIECES 1 2 3 4 7 8 9 10

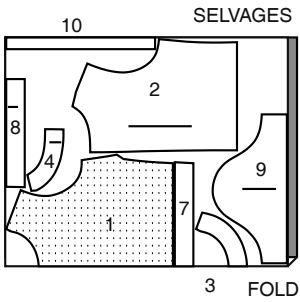
45" (115CM) WITH NAP SIZES 8 10 12 14 16 18



45" (115CM) WITH NAP SIZES 20 22 24 26

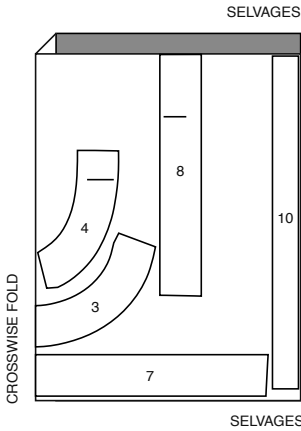


60" (150CM)
WITH NAP
ALL SIZES



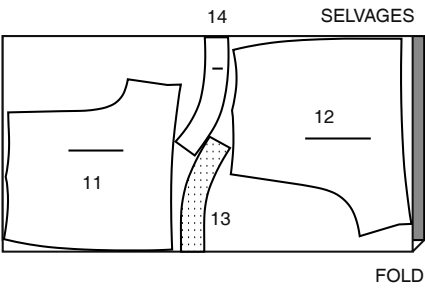
INTERFACING B
USE PIECES 3 4 7 8 10

20" (51CM)
ALL SIZES

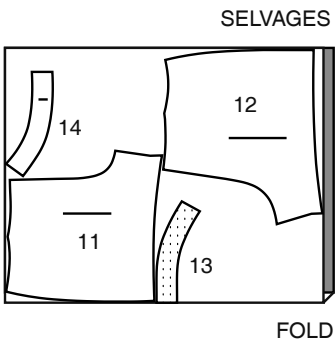


SHORTS C
USE PIECES 11 12 13 14

45" (115CM)
WITH NAP
ALL SIZES

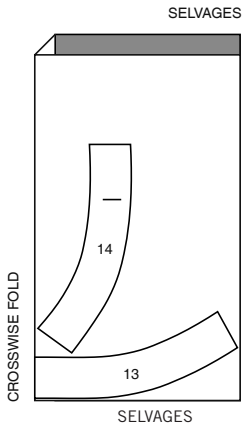


60" (150CM)
WITH NAP
ALL SIZES



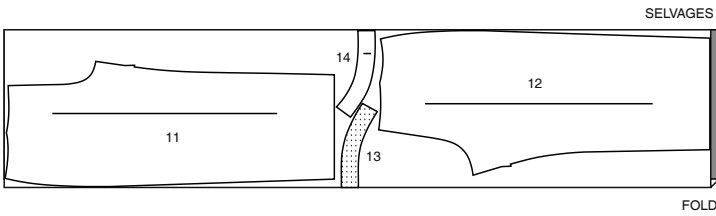
INTERFACING C,D
USE PIECE 13 14

20" (51CM)
ALL SIZES

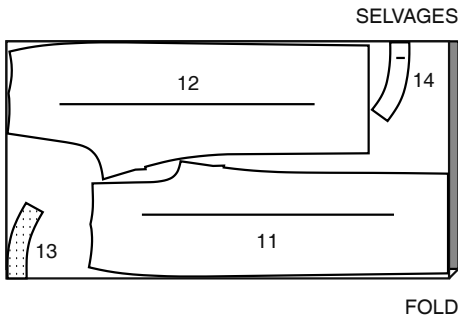


PANTS D
USE PIECES 11 12 13 14

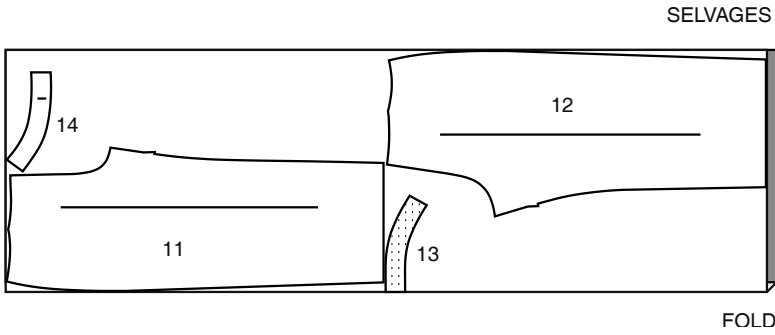
45" (115CM)
WITH NAP
ALL SIZES



60" (150CM)
WITH NAP
SIZES 8 10 12 14 16



60" (150CM)
WITH NAP
SIZES 18 20 22 24 26



SEWING TUTORIALS



Build your skills viewing short, easy-to-follow videos at
simplicity.com/sewingtutorials

Sewing Directions

FABRIC KEY



Sewing methods in **BOLD TYPE** have Sewing Tutorial Video available.
Scan QR CODE to watch videos:

FINISH – See Seams: “how to finish seam allowances” video.

FLAT DART – See Darts: “sewing flat dart” video.

INVISIBLE ZIPPER – See Zippers: “sewing an invisible zipper” video.

SLEEVE – See Armholes/Sleeves: “sewing a set in sleeve” video.

SLIPSTITCH – See Hand Stitching: “how to slip stitch” video.

TACK – See Hand Stitching: “how to tack” video.

TOPSTITCH – See Machine Stitches: “how to topstitch” video.

TRIM SEAM – See Seams: “how to trim, clip and layer seams” video.

UNDERSTITCH – See Machine Stitches: “how to understitch” video.

GENERAL DIRECTIONS FOR PIPING

NOTE: Machine- baste piping in a 3/8"(1cm) seam. When stitching seams trimmed with piping, use a zipper or cording foot.

- TO **APPLY**- On **OUTSIDE**, pin piping to project edges as instructed in Sewing Directions, having cord extend beyond seam OR stitching line and flat/lip edge within the seam allowance. Machine-baste as close to cord as possible without catching in the cord.

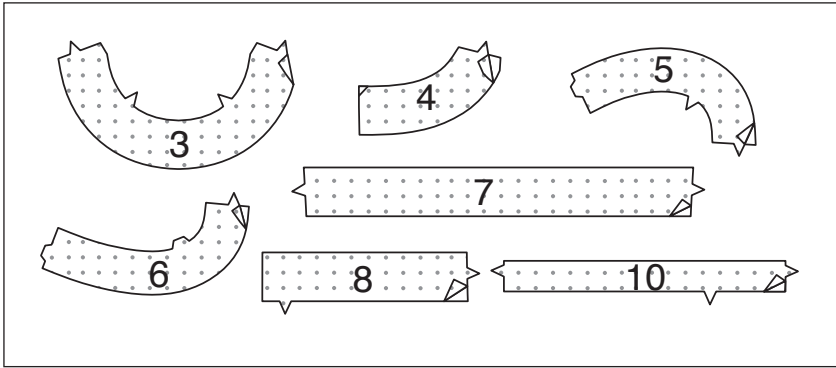
- TO **TAPER ENDS**- Pin piping in place, as above, tapering end to nothing where seam lines cross. Machine-baste, as above.
TIP FOR FABRIC COVERED CORD- Open out fabric covering and trim cord from where it will cross seam line.

- TO **APPLY TO A CORNER**- Allow extra fullness at corner and raise the presser foot, and clip the flat/lip edge up to the cording, being careful not to snip the cord. Pivot with needle in fabric at corner and continue piping the next edge.

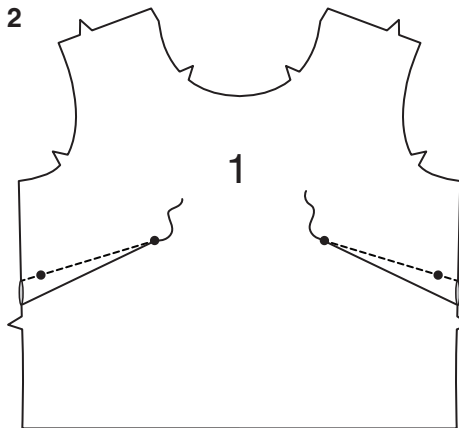
- WHEN PIPING ENDS MEET**- lap ends, tapering to nothing in seam allowance.

- TO **FINISH ENDS**- Trim piping to raw edge of fabric. Rip open the stitching of the piping at end. Trim cord even with seam allowance, being careful not to cut the bias. Turn bias end over cording. Baste piping in place.

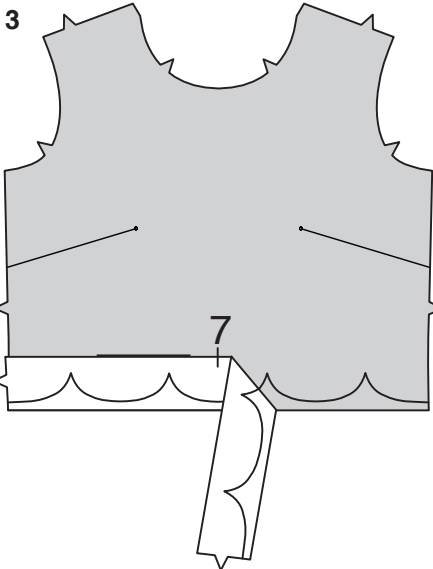
1



2



3



4



TOP A, B

NOTE: Under each sub-heading, View A will be shown unless otherwise indicated.

INTERFACING

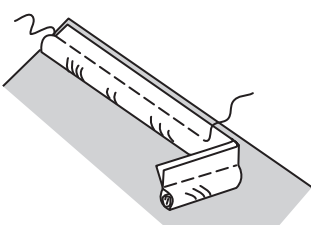
1. Pin **INTERFACING** to wrong side of each matching **FABRIC** section. Fuse, following manufacturer's instructions. Trim corners of interfacing as shown.

FRONT AND BACK

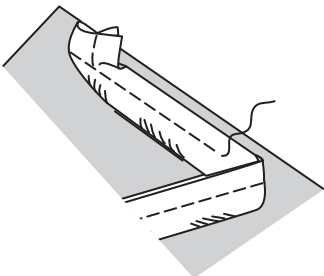
2. Make **FLAT DARTS** in **FRONT** (1). Press darts down.

3. On **OUTSIDE**, using **LOWER FRONT FACING** (7) as a guide, transfer stitching lines to lower edge of front, as shown.

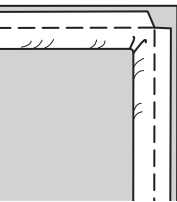
4. Make **FLAT DARTS** in **BACK** (2) sections. Press darts toward side.



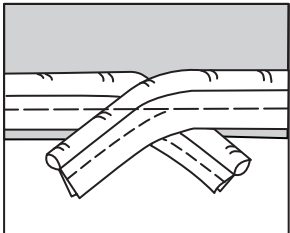
APPLY



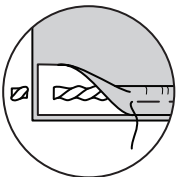
TAPER ENDS



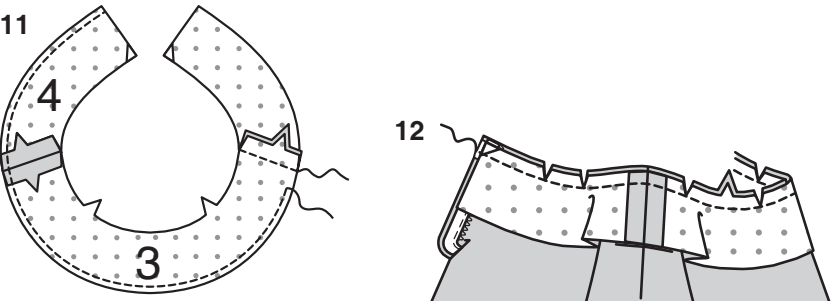
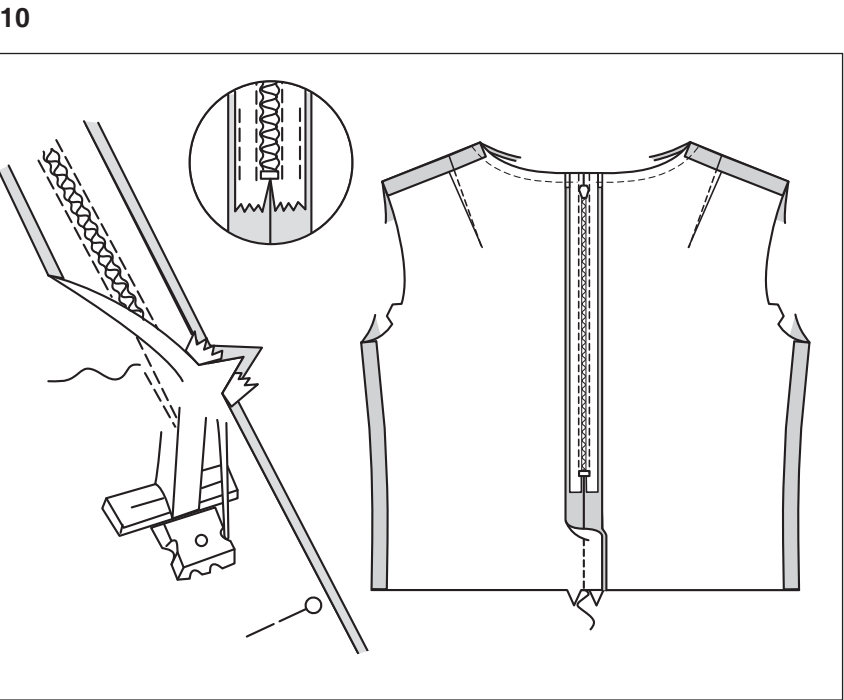
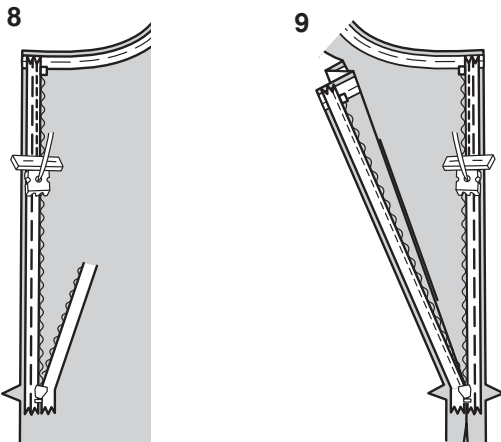
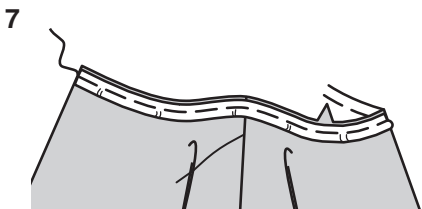
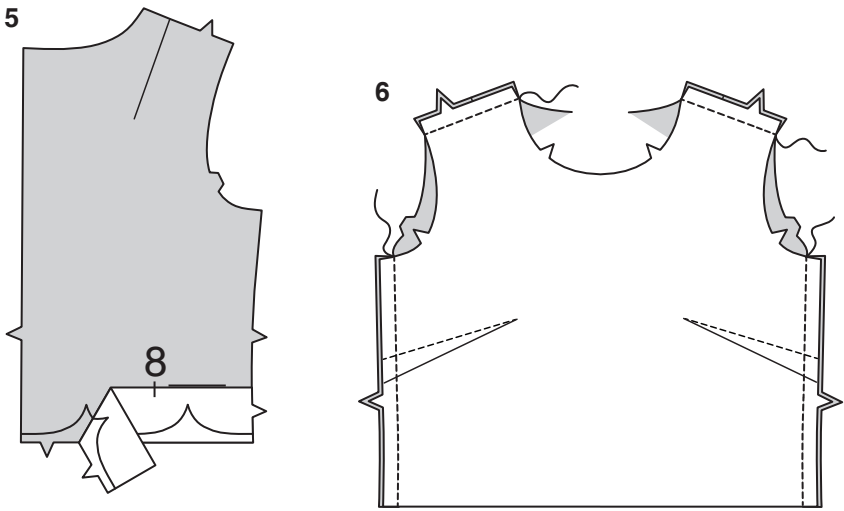
APPLY TO A CORNER



WHEN PIPING ENDS MEET



FINISH ENDS



5. On OUTSIDE, using LOWER BACK FACING (8) as a guide, transfer stitching lines to lower edge of back sections, as shown.
6. With RIGHT sides together, stitch front to back at shoulder and side seams.

7. **APPLY PIPING** to neck edge (See GENERAL DIRECTIONS FOR PIPING). **FINISH ENDS.**

ZIPPER

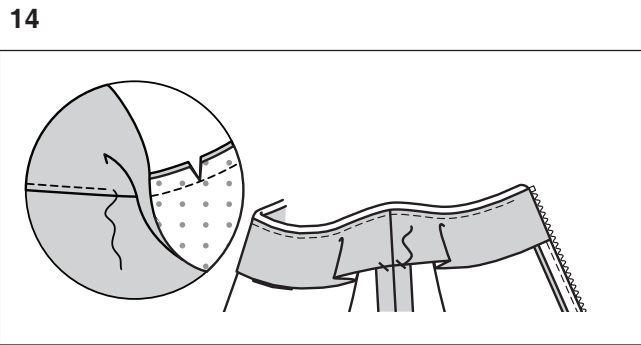
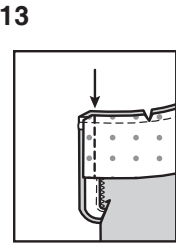
NOTE: *Stitch INVISIBLE ZIPPER using an invisible zipper foot.*

8. Open the zipper and press the tape using a cool iron. On OUTSIDE, pin RIGHT side of the zipper face down on the RIGHT side of the zipper opening. Have the coil along the seam line, the tape within the seam allowance and the top stop 1/2" (1.3cm) below upper edge, as shown. Hand-baste along center of the tape. Position zipper foot at the top of the zipper with RIGHT groove of the foot over coil. Stitch along tape to the notch. Back-stitch to reinforce.
9. Pin the remaining half of the zipper to the LEFT side of the zipper opening in same manner. Make sure the upper and lower edges of the garment are even. Hand-baste along the center of the tape. Position zipper foot at the top of the zipper with LEFT groove over the coil. Stitch along tape to the notch. Back-stitch to reinforce.

10. Close zipper and check that it is invisible from the OUTSIDE. Pull the free ends of the zipper tape away from the seam allowance. Pin remaining center back seam together below zipper. Position zipper foot all the way to the LEFT so the needle goes down through the outer notch of the foot. Start stitching seam 1/4" (6mm) above lowest stitch and slightly to the LEFT. Stitch seam for about 3" (7.5cm). Stitch remainder of seam using your regular presser foot. If you prefer, open out each seam allowance at end of zipper and stitch tape to seam allowance.

FRONT AND BACK FACING

11. With RIGHT sides together, stitch FRONT FACING (3) to BACK FACING (4) at sides. **FINISH** unnotched edge of facing.
12. Open out center back opening edges of garment, rolling the zipper teeth away from the opening edge. With RIGHT sides together, pin facing to neck edge, matching centers and shoulder seams. Stitch upper edge in a 3/8" (1cm) seam, using an adjustable zipper foot. **TRIM SEAM**; clip curves.



13. Pin back opening edges together. Using an adjustable zipper foot, stitch 1/2" (1.3cm) from back edges, keeping zipper teeth free. Trim corners. Do not trim center back edges.
14. **UNDERSTITCH** facing as far as possible. Turn facing and back edges to INSIDE, rolling zipper teeth back in place; press. **TACK** at shoulder seams.

ARMHOLE A

15. Machine-stitch 1/2" (1.3cm) away from armhole edges.
16. With RIGHT sides together, stitch shoulder seams of FRONT ARMHOLE FACING (5) and BACK ARMHOLE FACING (6) sections. **FINISH** unnotched edge.

17. Stitch underarm seam of facings. With RIGHT sides together, stitch facing to armhole edge, matching shoulder and underarm seams. **TRIM SEAM**; clip curves.

18. **UNDERSTITCH** facing. Turn facing to INSIDE; press. **TACK** at underarm and shoulder seams.

SLEEVES B

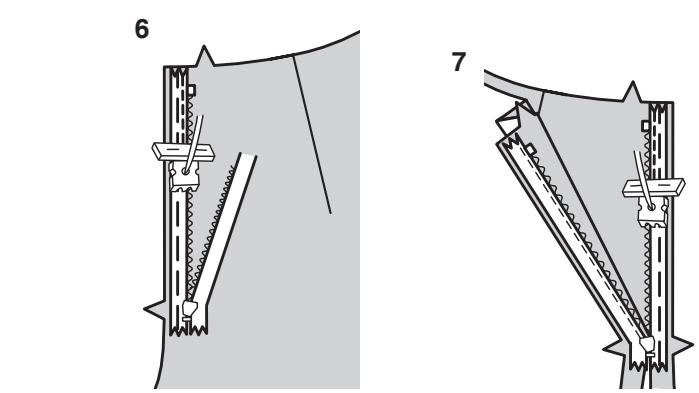
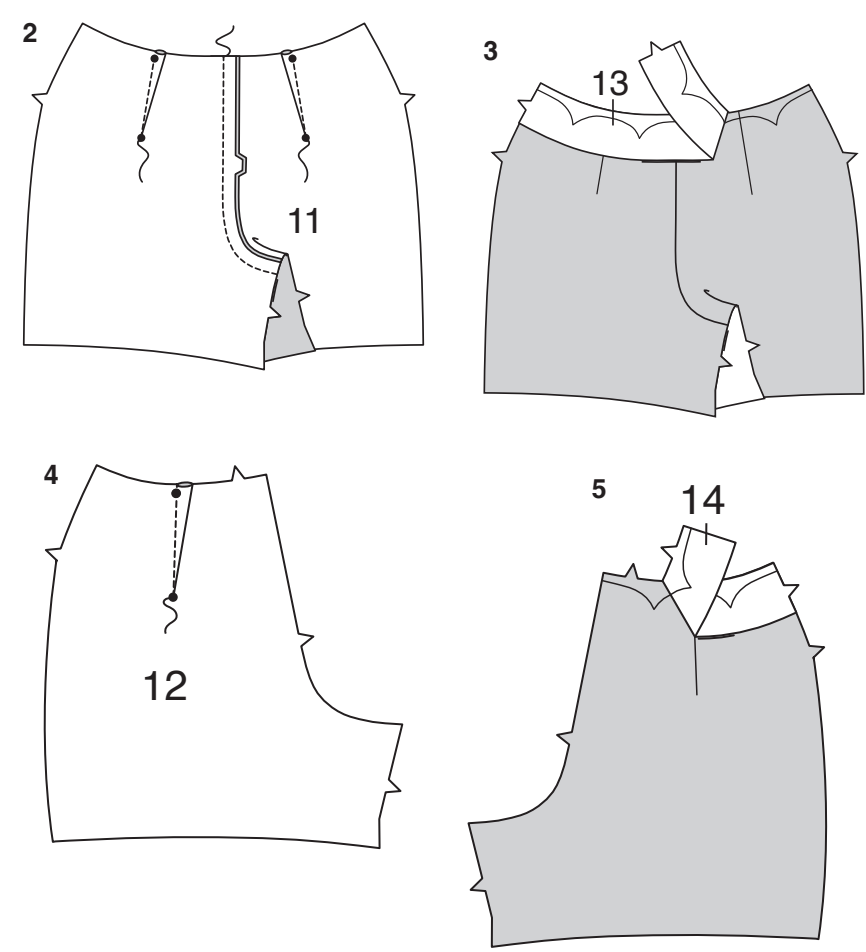
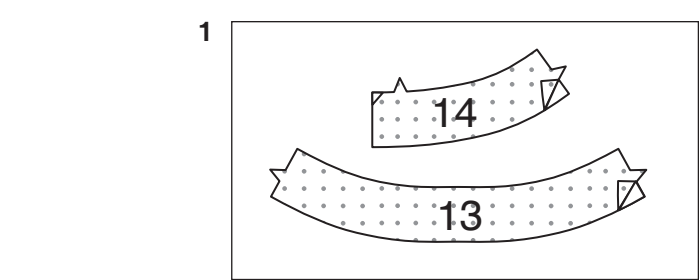
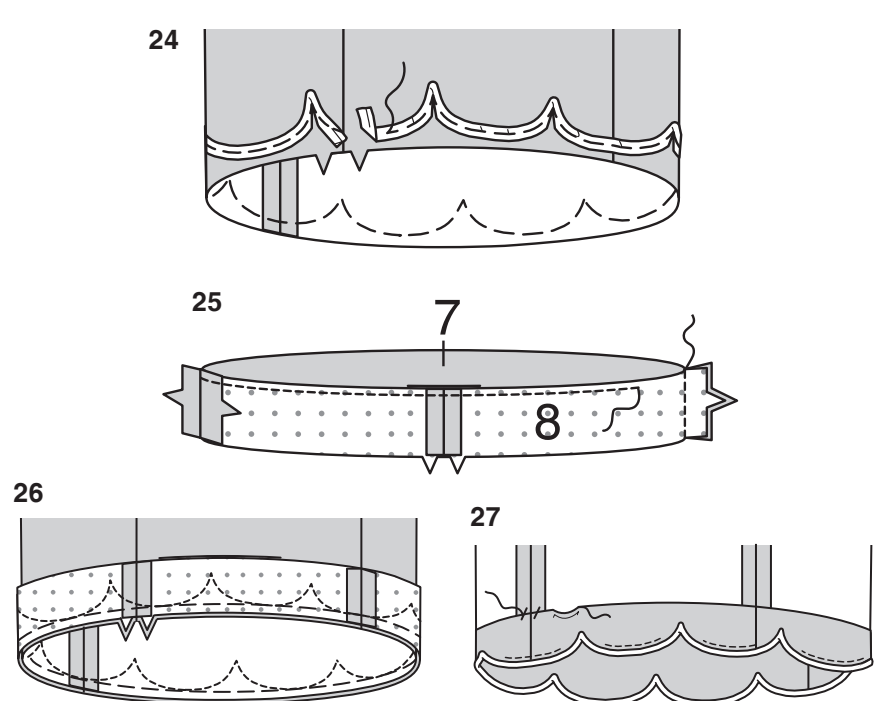
19. To ease top of SLEEVE (9) between notches, stitch along seamline, using long machine stitches, make a second row of long machine stitches 1/4" (6mm) away in seam allowance. Stitch underarm seam. **APPLY PIPING** to lower edge of sleeve. See **WHEN PIPING ENDS MEET** under GENERAL DIRECTIONS FOR PIPING.

20. With RIGHT sides together, stitch ends of SLEEVE FACING (10) sections. Press under 1/4" (6mm) on unnotched edge of facing.

21. With RIGHT sides together, pin facing to lower edge of sleeve, matching notches. Stitch in a 3/8" (1cm) seam. **TRIM SEAM.**

22. **UNDERSTITCH** facing. Turn facing to INSIDE. Press. Baste close to pressed edge. On OUTSIDE, **TOPSTITCH** as basted.

23. Turn sleeve RIGHT side out. Hold garment WRONG side out with armhole toward you. With RIGHT sides together, pin **SLEEVE** to armhole edge with center small dot at shoulder seam, matching underarm seams, notches and remaining small dots. Pull up ease stitches to fit. To distribute fullness evenly, slide fabric along bobbin threads until there are no puckers or tucks on the seam line. Baste. Stitch. Stitch again 1/8" (3mm) from first stitching. Trim seam below notches close to stitching. Press only the seam allowance, shrinking out fullness.



FINISHING

- 24.** On OUTSIDE, **APPLY PIPING** to lower edge of bodice, having flat edge of piping next to lower raw edge, as shown. See also **APPLY TO A CORNER** under GENERAL DIRECTIONS FOR PIPING. To finish piping at center back, see **WHEN PIPING ENDS MEET**.
- 25.** With RIGHT sides together, stitch lower front facing to lower back facing at sides. **FINISH** unnotched edge of facing.
- 26.** With RIGHT sides together, pin facing to lower edge of garment, having raw edges even, matching side seams. Baste along 3/8" (1cm) seam allowance. Stitch along stitching lines, using an adjustable zipper foot.
- 27.** **UNDERSTITCH** facing as far as possible. Turn facing to INSIDE. Press. **TACK** at side seams. **SLIPSTITCH** finished edge of facing to garment if you prefer.

SHORTS C, PANTS D

NOTE: Under each sub-heading, View C will be shown unless otherwise indicated.

INTERFACING

- 1.** Pin INTERFACING to wrong side of each matching FABRIC section. Fuse, following manufacturer's instructions. Trim corners of interfacing as shown.

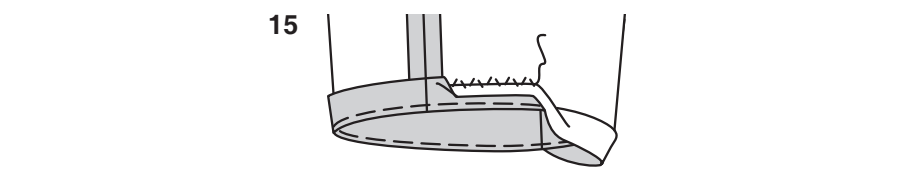
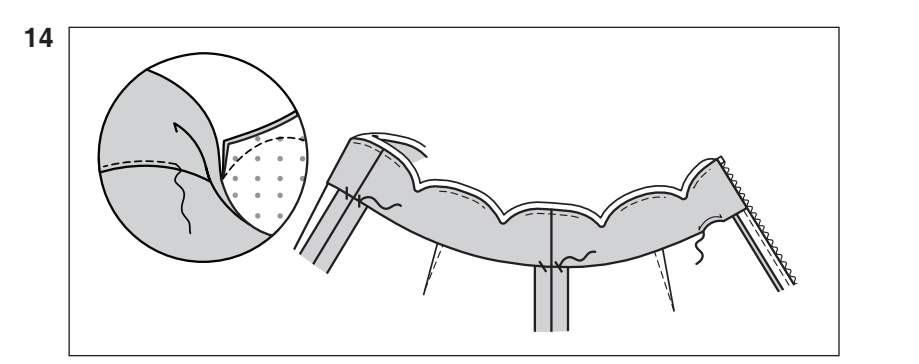
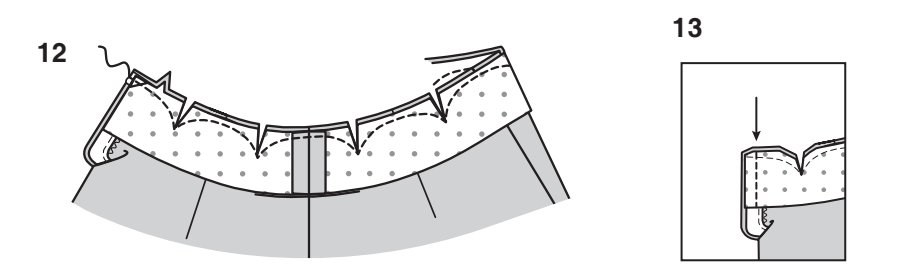
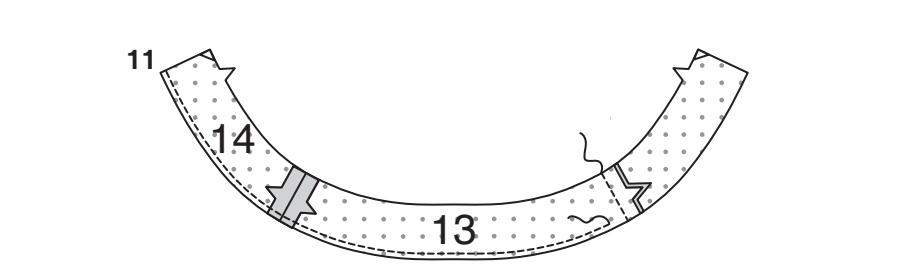
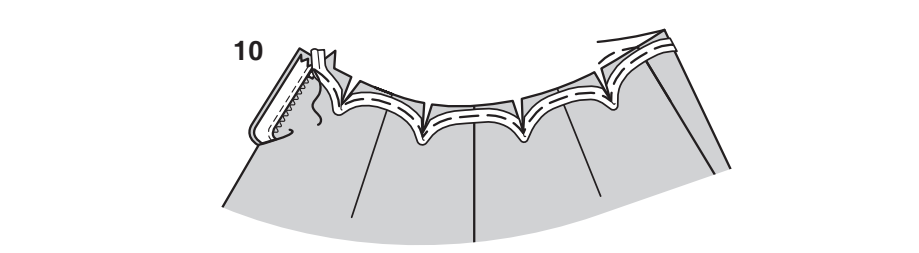
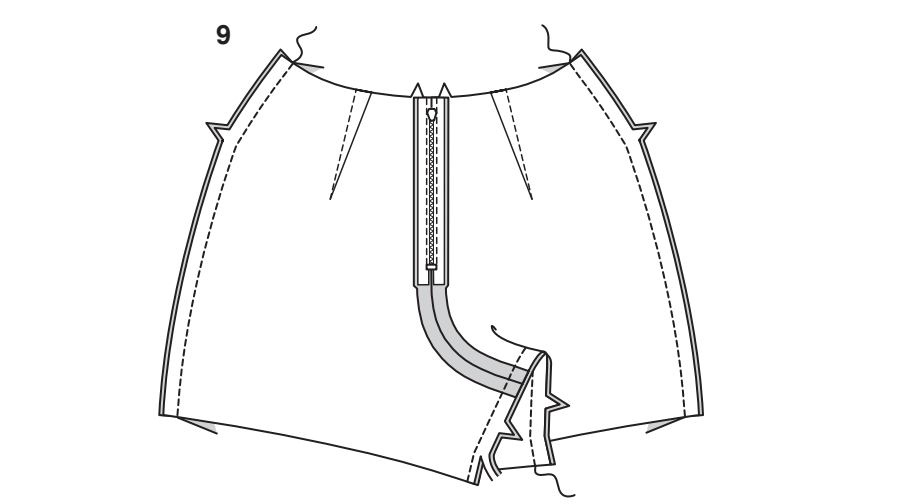
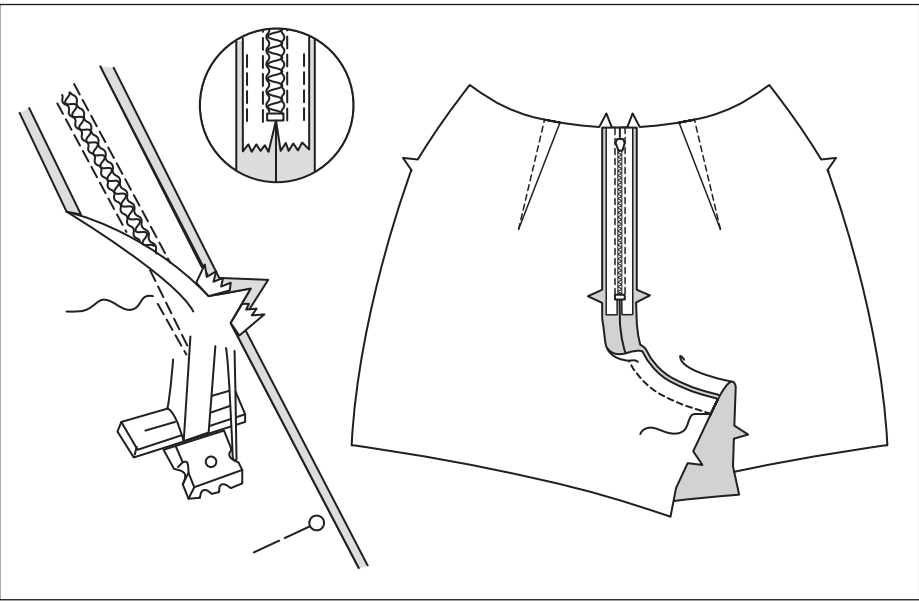
FRONT AND BACK

- 2.** Make **FLAT DARTS** in FRONT (11). Press darts toward center. With RIGHT sides together, stitch center front seam of front sections.
- 3.** On OUTSIDE, using FRONT FACING (13) as a guide, transfer stitching lines to upper edge of front, as shown.
- 4.** Make **FLAT DARTS** in BACK (12). Press darts toward center.
- 5.** On OUTSIDE, using BACK FACING (14) as a guide, transfer stitching lines to upper edge of back sections, as shown.

ZIPPER

NOTE: Stitch **INVISIBLE ZIPPER** using an invisible zipper foot.

- 6.** Open the zipper and press the tape using a cool iron. On OUTSIDE, pin RIGHT side of the zipper face down on the RIGHT side of the zipper opening. Have the coil along the seam line, the tape within the seam allowance and the top stop 1/2" (1.3cm) below upper edge, as shown. Hand-baste along center of the tape. Position zipper foot at the top of the zipper with RIGHT groove of the foot over coil. Stitch along tape to the notch. Back-stitch to reinforce.
- 7.** Pin the remaining half of the zipper to the LEFT side of the zipper opening in same manner. Make sure the upper and lower edges of the garment are even. Hand-baste along the center of the tape. Position zipper foot at the top of the zipper with LEFT groove over the coil. Stitch along tape to the notch. Back-stitch to reinforce.



- 8.** Close zipper and check that it is invisible from the OUTSIDE. Pull the free ends of the zipper tape away from the seam allowance. Pin remaining center back seam together below zipper. Position zipper foot all the way to the LEFT so the needle goes down through the outer notch of the foot. Start stitching seam 1/4" (6mm) above lowest stitch and slightly to the LEFT. Stitch seam for about 3" (7.5cm). Stitch remainder of seam using your regular presser foot. If you prefer, open out each seam allowance at end of zipper and stitch tape to seam allowance.

INNER LEG AND SIDE SEAMS

- 9.** With RIGHT sides together, pin front to back at side seams. Stitch. Pin front to back at entire inner leg seam. Stitch. **TRIM SEAM.**

FINISHING

- 10.** On OUTSIDE, **APPLY PIPING** to upper edge of shorts/pants, having flat edge of piping next to raw edge, as shown (see **GENERAL DIRECTIONS FOR PIPING**). See also **APPLY TO A CORNER**. To finish piping at center back, see **TAPER ENDS**.
- 11.** With RIGHT sides together, stitch lower front facing to lower back facing at sides. **FINISH** unnotched edge of facing.
- 12.** Open out center back opening edges of shorts/pants, rolling the zipper teeth away from the opening edge. With RIGHT sides together, pin facing to waist, matching centers and side seams. Stitch upper edge along stitching lines, using an adjustable zipper foot. **TRIM SEAM**; clip curves.
- 13.** Pin back opening edges together. Using an adjustable zipper foot, stitch 1/2" (1.3cm) from back edges, keeping zipper teeth free. Trim corners. Do not trim center back edges.
- 14.** **UNDERSTITCH** facing as far as possible. Turn facing and back edges to INSIDE, rolling zipper teeth back in place; press. **TACK** at seams. **SLIPSTITCH** finished edge of facing to garment if you prefer.
- 15.** Turn up 1-1/4" (3.2cm) hem on lower edge of shorts/pants. Baste close to fold. **FINISH** raw edge. Sew hem in place. Press.