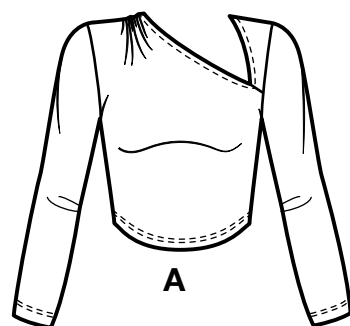


# Simplicity®

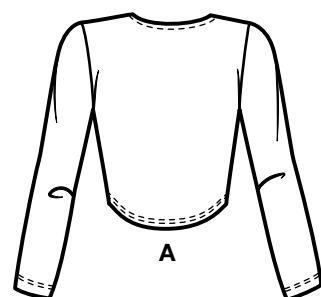
Thank you for purchasing this Simplicity pattern. We made every effort to provide you with a high quality product.



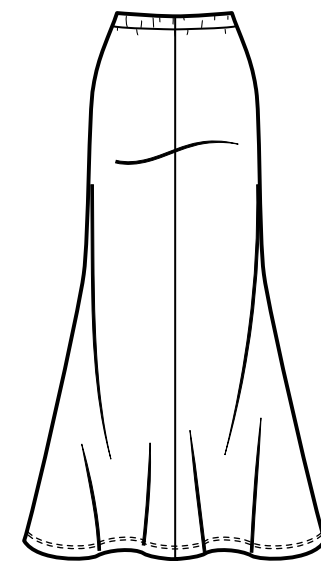
A



B

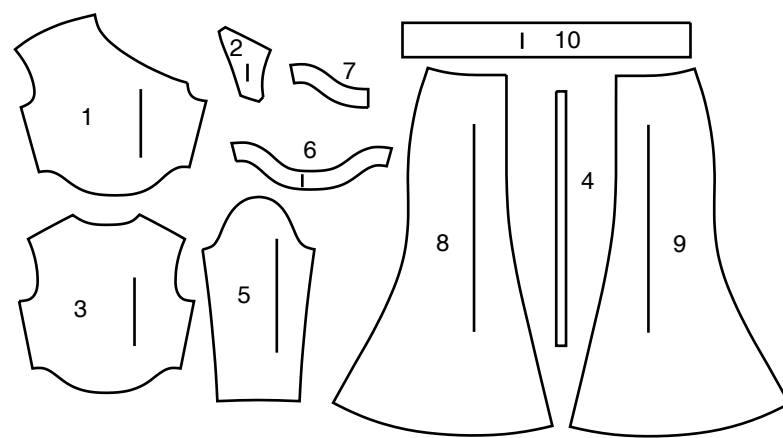


A



B

10 PIECES



- 1 Front-A
- 2 Left Front-A
- 3 Back-A
- 4 Elastic Guide for Neck-A
- 5 Sleeve-A
- 6 Front Hem Facing-A
- 7 Back Hem Facing-A
- 8 Front-B
- 9 Back-B
- 10 Casing-B

## General Directions

### The Pattern

- SYMBOLS**
- GRAIN LINE Place on straight grain of fabric parallel to selvage
  - PLACE SOLID LINE on fold of fabric.
  - CENTER FRONT OR BACK of garment.
  - NOTCHES
  - DOTS
  - CUTTING LINE
  - LENGTHEN OR SHORTEN LINES

SEAM ALLOWANCE: 5/8" (1.5cm) unless otherwise stated is included but not printed on MULTI-SIZE PATTERNS. Mark your size with colored felt tip pen. See chart on tissue for how to use MULTI-SIZE PATTERNS.

**ADJUST IF NEEDED**  
Make adjustments before placing pattern on fabric.

**TO LENGTHEN:**  
Cut pattern between lengthen or shorten lines. Spread pattern evenly, the amount needed and tape to paper.

**TO SHORTEN:**  
At lengthen or shorten lines, make an even pleat taking up amount needed. Tape in place.

When lengthen or shorten lines are not given, make adjustments at lower edge of pattern.

### Cutting/Marking

**BEFORE CUTTING:**  
PRESS pattern pieces with a warm dry iron. PRE-SHRINK fabric by pre-washing washables or steam-pressing non-washables.

CIRCLE your cutting layout.

PIN pattern to fabric as shown in Cutting Layouts.

• FOR DOUBLE THICKNESS: Fold fabric with RIGHT sides together.

• FOR SINGLE THICKNESS: Place fabric RIGHT side up.

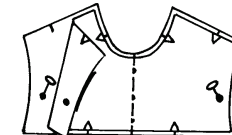
• FOR PILE, SHADED OR ONE WAY DESIGN FABRICS: Use "with nap" layouts

**AFTER CUTTING:**  
Transfer markings to WRONG side of fabric before removing pattern. Use pin and chalk method or dressmaker's tracing paper and wheel.

**To Quick Mark:**

• Snip edge of fabric to mark notches, ends of fold lines and center lines.

• Pin mark dots.

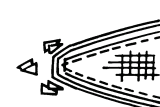


### Sewing

- SEW garment following **Sewing Directions**.
- PIN or machine-baste seams matching notches.
- STITCH 5/8" (1.5 cm) seams unless otherwise stated.
- PRESS seams open unless otherwise indicated clipping when necessary so seams will lie flat.
- TRIM seams to reduce bulk, as shown below.



Trim enclosed seams into layers



Trim corners



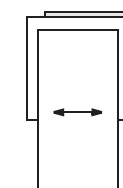
Clip inner curves



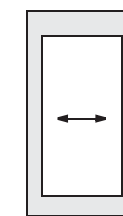
Notch outer curves

### SPECIAL CUTTING NOTES

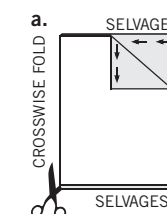
★ If layout shows a piece extending past fold, cut out all pieces except piece that extends.



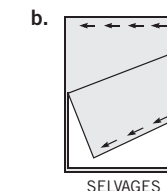
Open out fabric to single thickness. Cut extending piece on RIGHT side of fabric in position shown.



✱ Mark small arrows along both selvages indicating direction of nap or design. Fold fabric crosswise with RIGHT sides together, and cut along fold (a).



Turn one fabric layer around so arrows on both layers go in the same direction. Place RIGHT sides together (b).



## Cutting Layouts

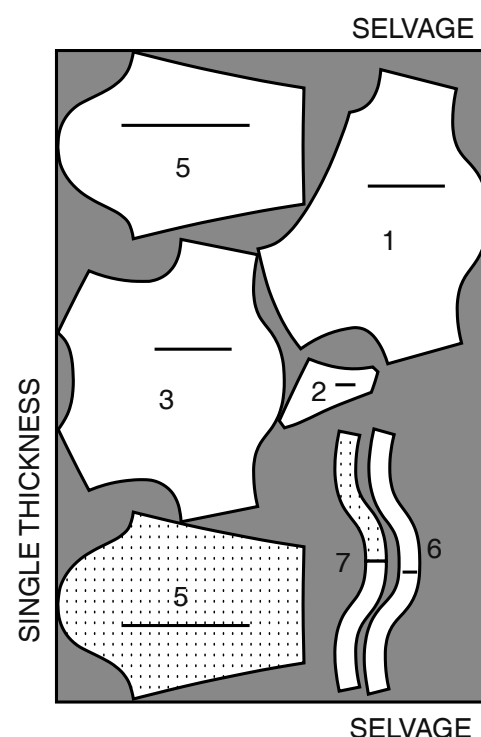
WRONG SIDE OF FABRIC (white box)  
RIGHT SIDE OF FABRIC (grey box)  
PATTERN PIECE WITH PRINTED SIDE UP (white box with dots)  
PATTERN PIECE WITH PRINTED SIDE DOWN (grey box with dots)  
★ SEE SPECIAL CUTTING NOTES (star in box)

POSITION OF PATTERN PIECES MAY VARY SLIGHTLY ACCORDING TO YOUR PATTERN SIZE

### TOP A

USE PIECES 1 2 3 5 6 7

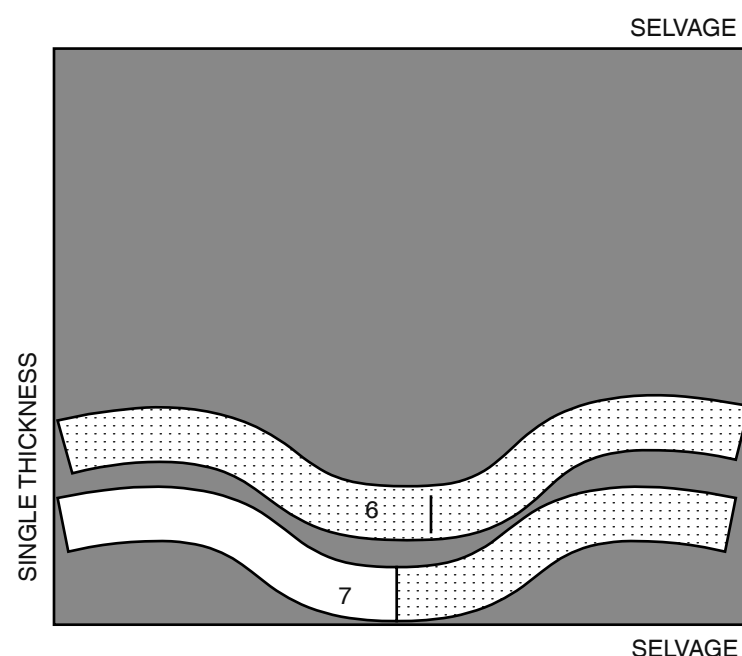
60" (150CM) WITH NAP ALL SIZES



### INTERFACING

USE PIECES 6 7

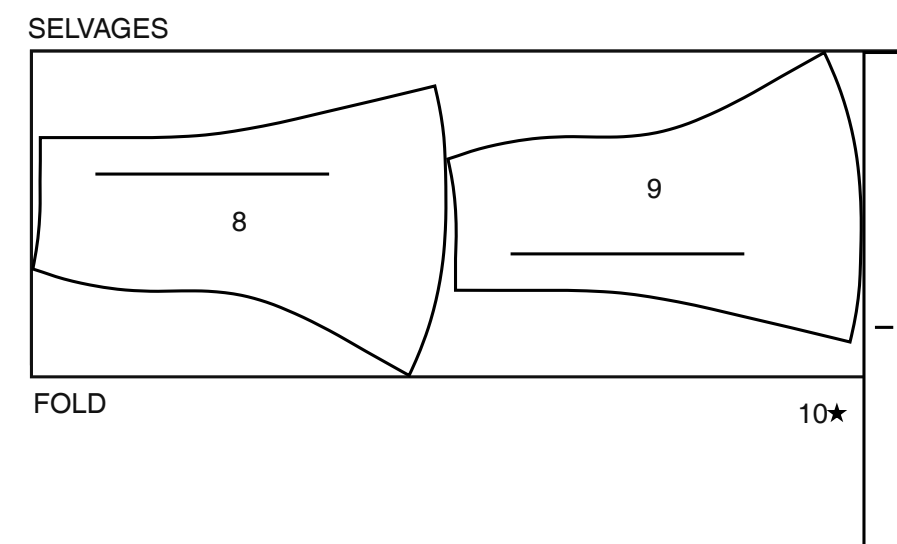
20" (51CM) WITHOUT NAP ALL SIZES



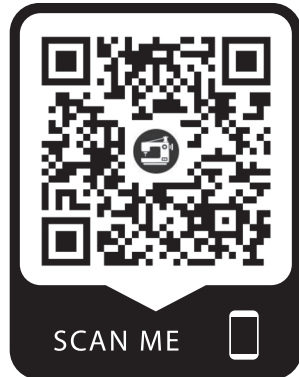
### SKIRT B

USE PIECES 8 9 10

60" (150CM) WITH NAP ALL SIZES



## SEWING TUTORIALS



Build your skills viewing short, easy-to-follow videos at [simplicity.com/sewingtutorials](http://simplicity.com/sewingtutorials)

## Sewing Directions

### FABRIC KEY



Sewing methods in **BOLD TYPE** have Sewing Tutorial Video available. Scan QR CODE to watch videos:

**EASE/GATHER** – See **Gathering**: “sewing two row gathers” video.

**SET IN SLEEVE – sSSLIPSTITCH** – see **Hand Stitching**: “how to slip stitch” video.

**TOPSTITCH** – See **Machine Stitches**: “how to topstitch” video.

**TRIM SEAM** – See **Seams**: “how to trim, clip and layer seams” video.

**UNDERSTITCH** – See **Machine Stitches**: “how to understitch” video.

**PATTERN PIECES WILL BE IDENTIFIED BY NUMBERS THE FIRST TIME THEY ARE USED.**

**STITCH 5/8" (1.5CM) SEAMS WITH RIGHT SIDES TOGETHER UNLESS OTHERWISE STATED.**

### SIMPLY THE BEST SEWING TECHNIQUES FOR KNITS

- Use a ball point or stretch needle.
- Narrow zigzag stitch or a stretch stitch.
- To prevent shoulder seams from stretching, pin center of hem tape, clear elastic or twill tape along seam line on **BACK** shoulder edges, then stitch the shoulder seams.

### WITH OVERLOCK/SERGER

- The Overlock/Serger can be used alone or as a supplement to your conventional sewing machine.
- Overlock sewing machines stitch, trim and finish all in one operation. Therefore, it is **VERY** important to Check Fit before stitching seams.
- Using matching color thread, baste seams and try garment on. If no adjustments are needed, overlock seams along basting.
- The three thread overlock is ideal for major seams such as shoulder, side, underarm and sleeve seams.
- For stress areas such as crotch seams and armholes, the four thread overlock/safety stitch is best...OR, use a three thread overlock, and stitch along seam with a conventional machine to reinforce.
- The two or three thread overlock stitch is a perfect finish for edges of facings, hems and seam allowances.

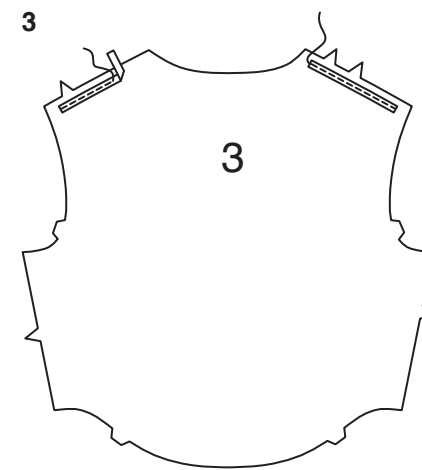
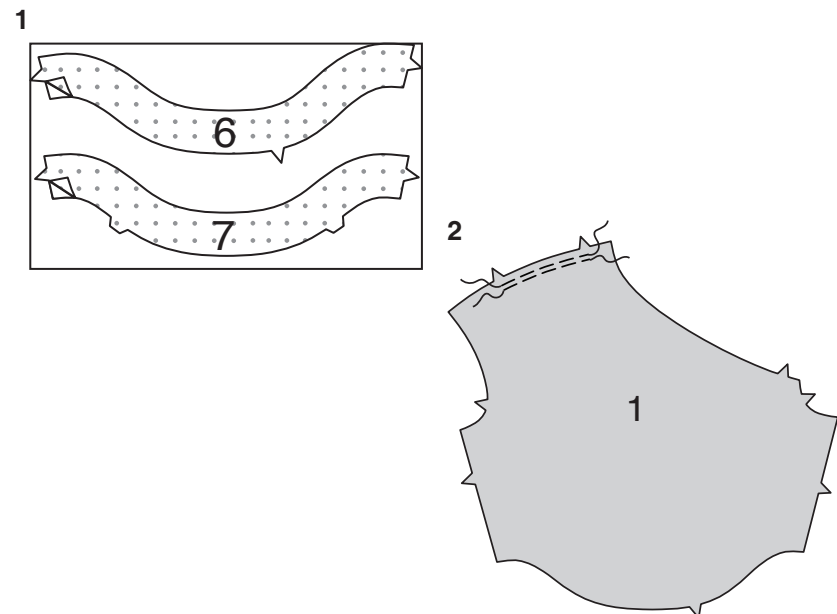
### TOP A

#### INTERFACING

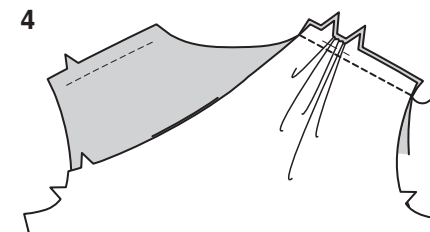
1. Pin interfacing to **WRONG** side of **FRONT HEM FACING** (6) and **BACK HEM FACING** (7). Fuse in place following manufacturer's directions.

#### FRONT AND BACK

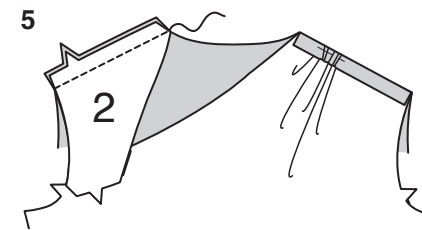
2. To **GATHER** right shoulder edge of **FRONT** (1) between the notches, loosen needle tension slightly. On **OUTSIDE**, stitch 5/8" (1.5cm) from cut edge using a long stitch. Stitch again 1/4" (6mm) from the first stitching within the seam allowance.



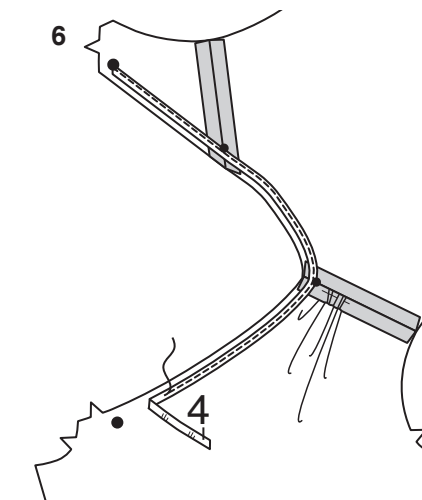
3. To prevent shoulder seams from stretching, pin center of hem tape, clear elastic or twill tape along seam line on **WRONG** side of **BACK** (3) shoulder edges between the seamlines. Stitch.



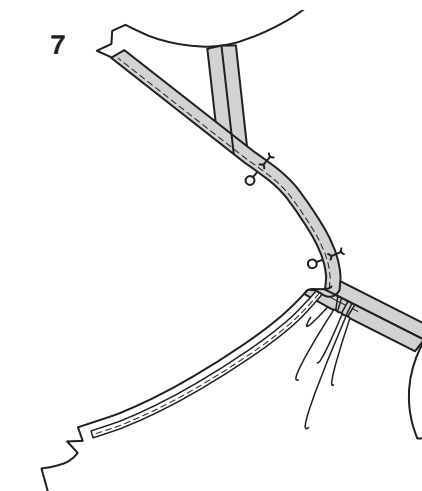
4. With **RIGHT** sides together and raw edges even, pin front to **BACK** (3) along right shoulder edges, pulling up gathering stitches to fit. Baste; stitch.



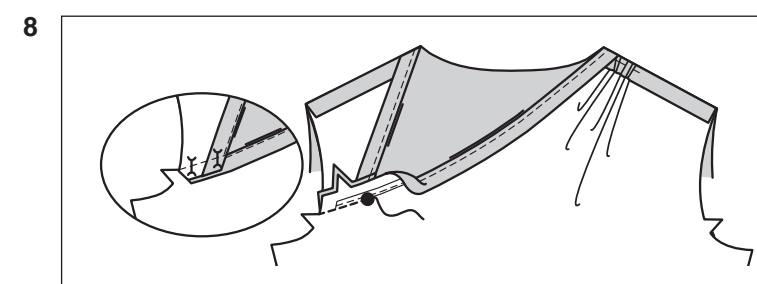
5. With **RIGHT** sides together and raw edges even, pin **LEFT FRONT** (2) to back along left shoulder edges. Stitch.



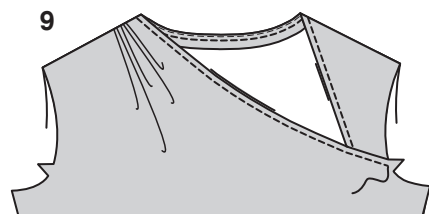
6. Cut a piece of 1/4" (6mm) elastic the length of the **ELASTIC GUIDE FOR NECK** (4). Transfer markings. On **INSIDE**, pin elastic to seam allowance of neck edge with inner edge of elastic along seamline, matching centers and large dots, placing small dots at shoulder seams. Stitch close to inner edge of elastic.



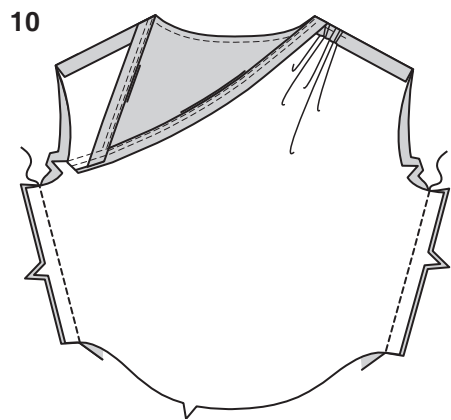
7. Turn elastic to **INSIDE**, along seamline on left front and back. Press; pin, placing pins on **OUTSIDE**.



8. With **RIGHT** sides together and raw edges even, pin lower edge of left front to upper edge of front, matching large dots and notches. Stitch from armhole edge to large dot, back-stitching at dot to reinforce the seam. Press seam and remaining neck edge to **INSIDE**. Pin, placing pins on **OUTSIDE**.

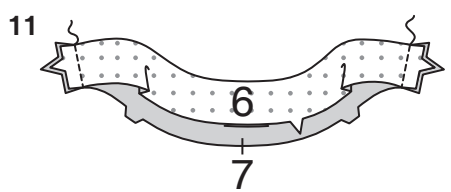


9. On OUTSIDE, **TOPSTITCH** 1/4" (6mm) from pressed neck edge to armhole edge of LEFT front, catching in seam allowance on INSIDE.

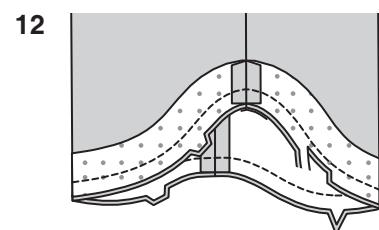


10. Stitch front to back at side edges.

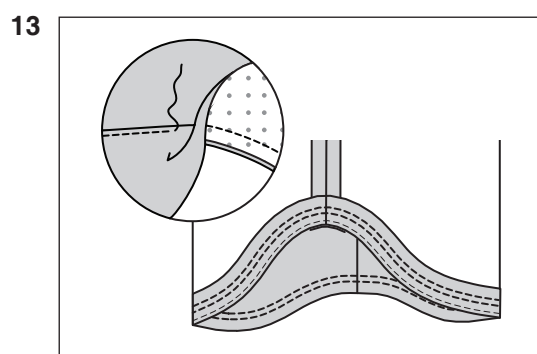
### HEM FACING



11. Stitch FRONT HEM FACING (6) to BACK HEM FACING (7) at ends.

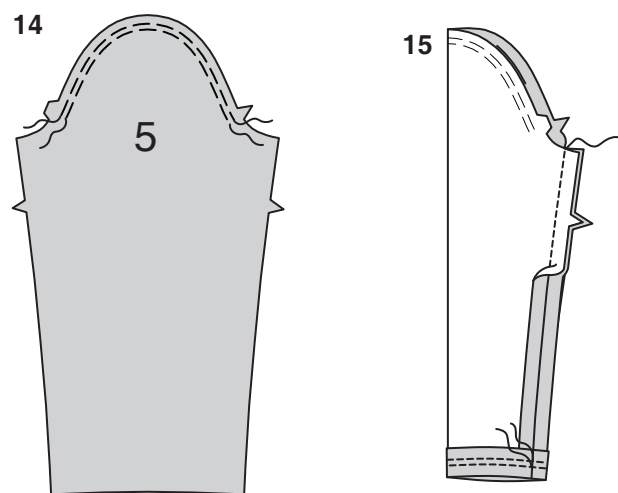


12. With RIGHT sides together and raw edges even, pin hem facing to lower edge of top, matching centers, seams, and notches. Stitch. **TRIM SEAM.**



13. **UNDERSTITCH** the facing. Turn facing to INSIDE; press. On OUTSIDE, **TOPSTITCH** 3/4" (2cm) from pressed edge, and 1/4" (6mm) above first stitching.

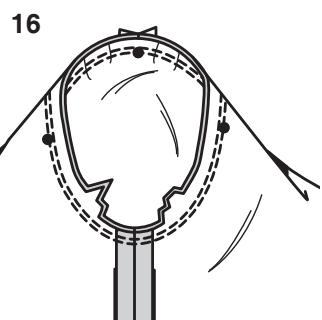
### SLEEVE



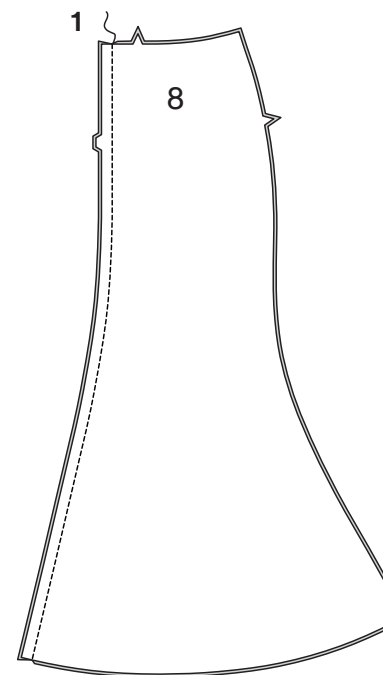
14. To **EASE** upper edge of SLEEVE (5) between the notches, loosen needle tension slightly. On OUTSIDE, stitch 5/8" (1.5cm) from cut edge using a long stitch. Stitch again 1/4" (6mm) from the first stitching within the seam allowance.

15. Stitch under arm edges of sleeve together, matching notches. Press up 1-1/4" (3.2cm) hem allowance. **TOPSTITCH** 3/4" (2cm) from pressed edge, and 1/4" (6mm) above first stitching.

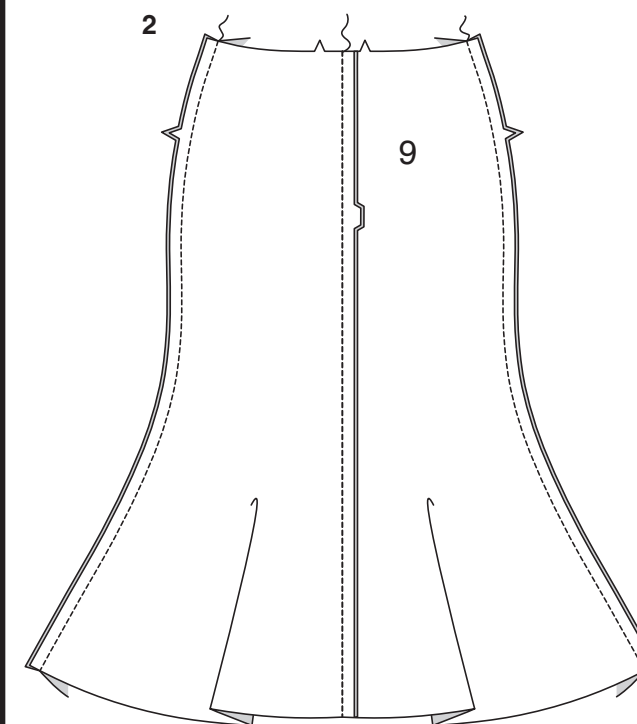
16. To **SET IN SLEEVE**, turn sleeve RIGHT side out. Hold top WRONG side out with armhole toward you. With RIGHT sides together, pin sleeve to armhole edge with center small dot at shoulder seam, matching underarm seams, notches and remaining small dots. Pull up ease stitches to fit. To distribute fullness evenly, slide fabric along bobbin threads until there are no puckers or tucks on the seam line. Baste. Stitch. Stitch again 1/8" (3mm) from first stitching. Trim seam below notches close to stitching. Press only the seam allowance, shrinking out fullness.



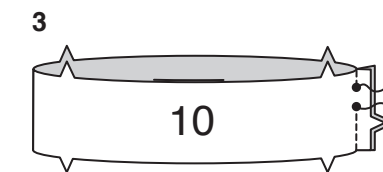
## SKIRT B



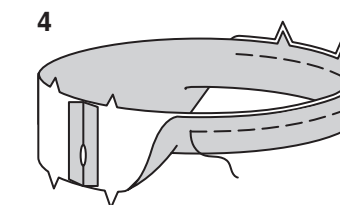
1. With RIGHT sides together and raw edges even, pin center front edges of FRONT (8). Stitch.



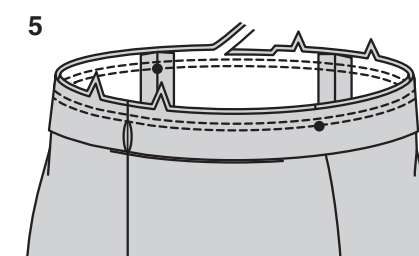
2. Stitch center back edges of BACK (9), matching notches. Stitch front to back at side edges.



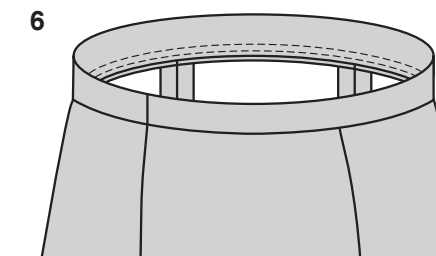
3. With RIGHT sides together, stitch center back seam of CASING (10), leaving an opening between small dots, as shown. Back-stitch at small dots to reinforce seam. Press seam open.



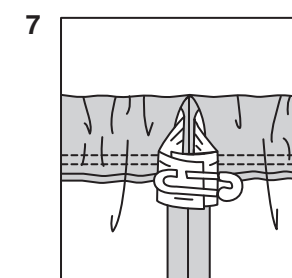
4. Fold casing in half, lengthwise, with WRONG sides together, having raw edges even. Baste raw edges together. The side with the opening is the UNDERSIDE of the casing.



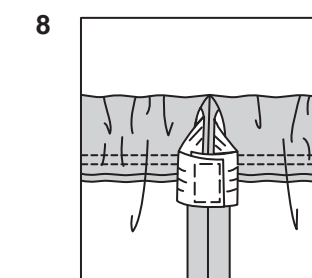
5. With the UNDERSIDE of casing facing you, pin casing to skirt matching centers, placing inner small dots at side seams. Stitch along seam line. Stitch again 1/4" (6mm) from first stitching within seam allowance. Trim close to second stitching.



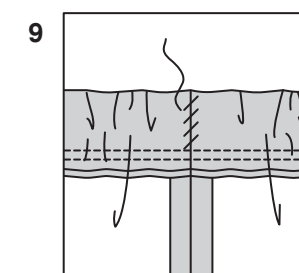
6. Press seam toward skirt, pressing casing out.



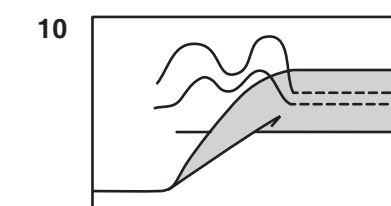
7. Cut a piece of 1" (2.5cm) elastic to fit waist, plus 1" (2.5cm). Insert elastic through opening in casing. Overlap ends and hold with a safety pin.



8. Try on skirt and adjust to fit. Stitch ends of elastic together securely.



9. **SLIPSTITCH** opening edges of casing together. Distribute fullness evenly. **TIP** – To secure elastic so it won't twist in wearing, stitch through all thicknesses of casing in the groove of each seam.



10. Press up 1-1/4" (3.2cm) hem allowance. **TOPSTITCH** 3/4" (2cm) from pressed edge, and 1/4" (6mm) above first stitching.