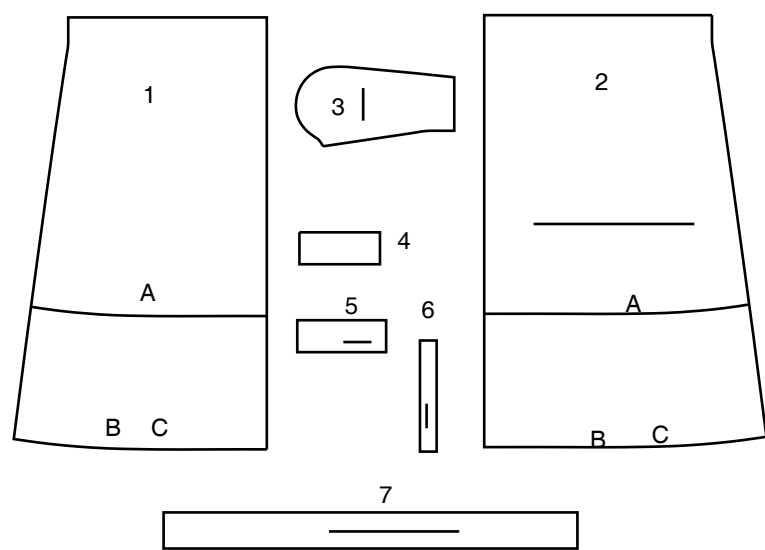
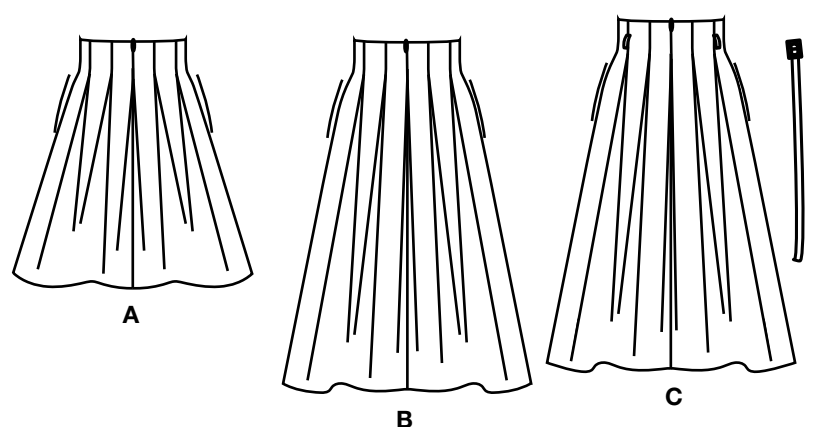
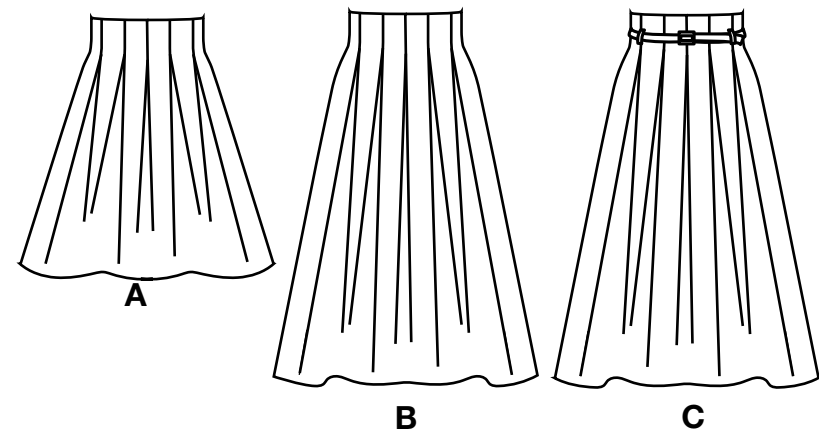


Thank you for purchasing this Simplicity pattern. We made every effort to provide you with a high quality product.

7 PIECES



- 1 FRONT - A,B,C
- 2 BACK - A,B,C
- 3 POCKET - A,B,C
- 4 FRONT FACING - A,B,C
- 5 BACK FACING - A,B,C
- 6 CARRIER - C
- 7 BELT - C



## General Directions

### The Pattern

- SYMBOLS**
- ↔ GRAIN LINE Place on straight grain of fabric parallel to selvage
  - ⇄ PLACE SOLID LINE on fold of fabric.
  - - - CENTER FRONT OR BACK of garment.
  - ▽▽▽ NOTCHES
  - ○ DOTS
  - CUTTING LINE
  - == LENGTHEN OR SHORTEN LINES

SEAM ALLOWANCE: 5/8" (1.5cm) unless otherwise stated is included but not printed on MULTI-SIZE PATTERNS. Mark your size with colored felt tip pen. See chart on tissue for how to use MULTI-SIZE PATTERNS.

### ADJUST IF NEEDED

Make adjustments before placing pattern on fabric.

**TO LENGTHEN:** Cut pattern between lengthen or shorten lines. Spread pattern evenly, the amount needed and tape to paper.

**TO SHORTEN:** At lengthen or shorten lines, make an even pleat taking up amount needed. Tape in place.

When lengthen or shorten lines are not given, make adjustments at lower edge of pattern.

### Cutting/Marking

#### BEFORE CUTTING:

PRESS pattern pieces with a warm dry iron. PRE-SHRINK fabric by pre-washing washables or steam-pressing non-washables.

CIRCLE your cutting layout.

PIN pattern to fabric as shown in Cutting Layouts.

• FOR DOUBLE THICKNESS: Fold fabric with RIGHT sides together.

• FOR SINGLE THICKNESS: Place fabric RIGHT side up.

• FOR PILE, SHADED OR ONE WAY DESIGN FABRICS: Use "with nap" layouts

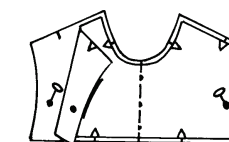
#### AFTER CUTTING:

Transfer markings to WRONG side of fabric before removing pattern. Use pin and chalk method or dressmaker's tracing paper and wheel.

#### To Quick Mark:

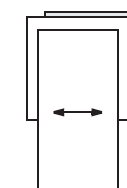
• Snip edge of fabric to mark notches, ends of fold lines and center lines.

• Pin mark dots.

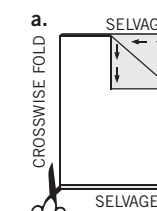


### SPECIAL CUTTING NOTES

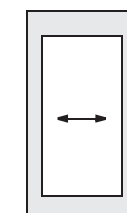
★ If layout shows a piece extending past fold, cut out all pieces except piece that extends.



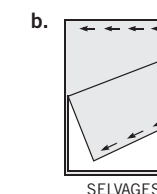
✱ Mark small arrows along both selvages indicating direction of nap or design. Fold fabric crosswise with RIGHT sides together, and cut along fold (a).



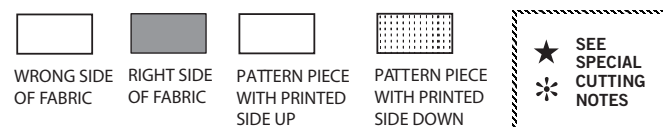
Open out fabric to single thickness. Cut extending piece on RIGHT side of fabric in position shown.



Turn one fabric layer around so arrows on both layers go in the same direction. Place RIGHT sides together (b).



## Cutting Layouts



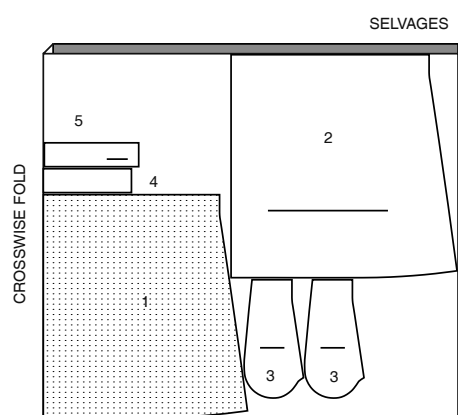
POSITION OF PATTERN PIECES MAY VARY SLIGHTLY ACCORDING TO YOUR PATTERN SIZE

### SKIRT A

USE PIECES 1 2 3 4 5

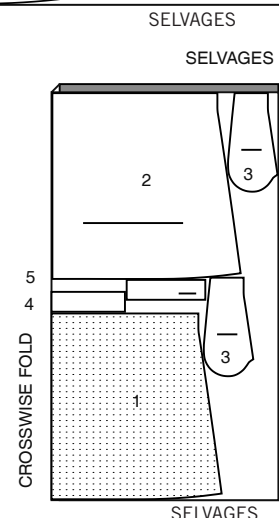
CUT TWO OF PIECE 5 IN POSITION SHOWN

45" (115CM) WITH NAP ALL SIZES



60" (150CM) WITH NAP ALL SIZES

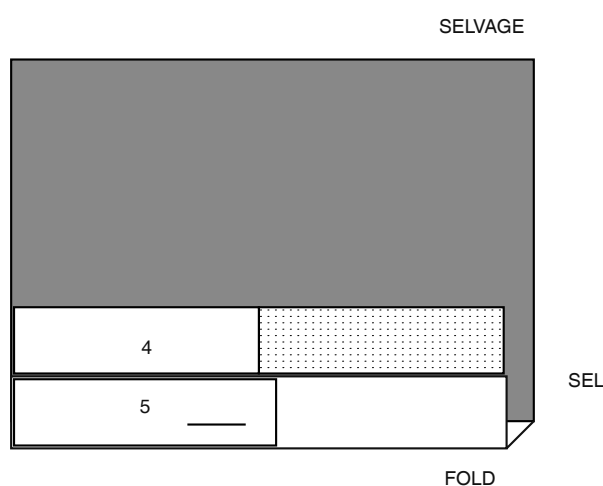
CUT FOUR OF PIECE 3 IN POSITION SHOWN



### INTERFACING A,B

USE PIECES 4 5

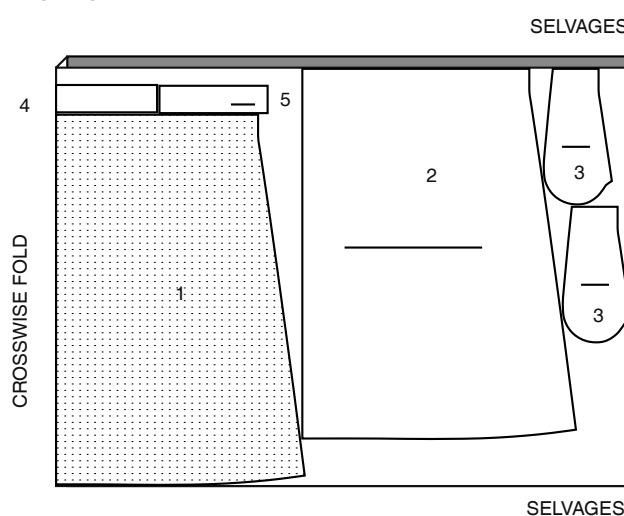
20" (51CM) ALL SIZES



### SKIRT B

USE PIECES 1 2 3 4 5

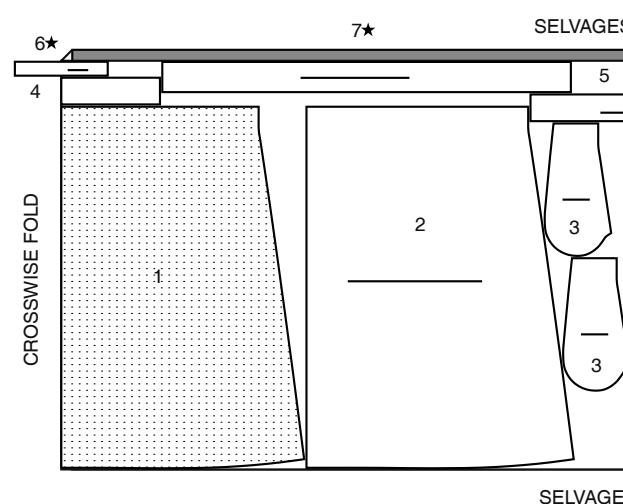
45" (115CM) WITH NAP ALL SIZES



### SKIRT C

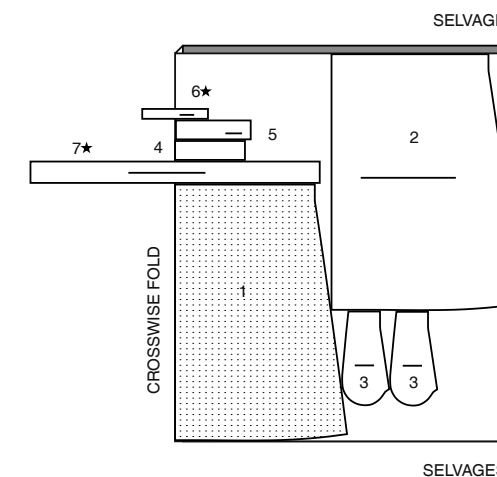
USE PIECES 1 2 3 4 5 6 7

45" (115CM) WITH NAP ALL SIZES



60" (150CM) WITH NAP ALL SIZES

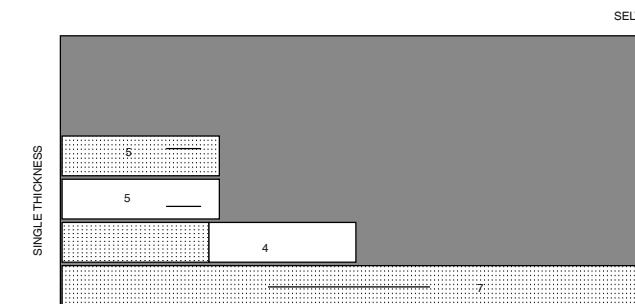
CUT TWO OF PICE 5 IN POSITION SHOWN



### INTERFACING C

USE PIECES 4 5 7

20" (51CM) ALL SIZES



## SEWING TUTORIALS



Build your skills viewing short, easy-to-follow videos at [simplicity.com/sewingtutorials](https://www.simplicity.com/sewingtutorials)

## Sewing Directions

**FABRIC KEY**

Read **General Directions** on page 1 before you begin.

Sewing methods in **BOLD TYPE** have Sewing Tutorial Video available. Scan **QR CODE** to watch videos:

**BELT LOOP/CARRIER** – See **Loops and Straps**: “how to sew belt loops” video.

**EDGESTITCH** – See **Machine Stitches**: “how to sew an edgestitch” video.

**FINISH** – See **Seams**: “how to finish seam allowances” video.

**INVISIBLE ZIPPER** – See **Zippers**: “sewing an invisible zipper” video.

**SLIPSTITCH** – See **Hand Stitching**: “how to slip stitch” video.

**TACK** – See **Hand Stitching**: “how to tack” video.

**TRIM SEAM** – See **Seams**: “how to trim, clip and layer seams” video.

**UNDERSTITCH** – See **Machine Stitches**: “how to understitch” video.

**PATTERN PIECES WILL BE IDENTIFIED BY NUMBERS THE FIRST TIME THEY ARE USED.**  
**STITCH 5/8" (1.5CM) SEAMS WITH RIGHT SIDES TOGETHER UNLESS OTHERWISE STATED.**

## SKIRT A, B, C

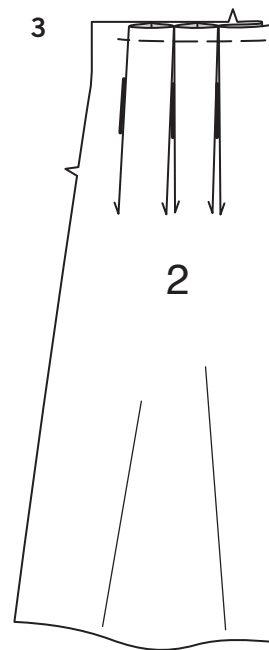
**NOTE:** Under each sub-heading, View A will be shown unless otherwise indicated.

## INTERFACING

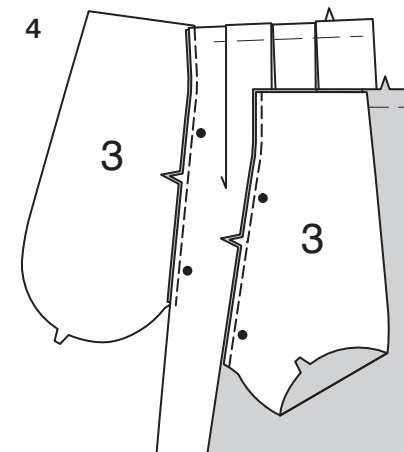
1. Pin **INTERFACING** to wrong side of each matching **FABRIC** section. Fuse, following manufacturer's instructions. Trim corners of interfacing as shown.

## FRONT AND BACK

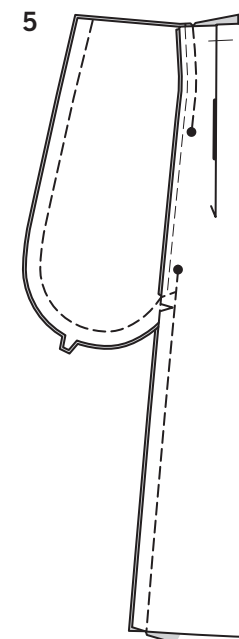
2. To make pleats in **FRONT** (1), on **INSIDE**, bring broken lines together matching small dots. Stitch along broken lines to small dots, back-stitching at small dots. Press pleat flat bringing stitching to center. Baste across raw edge.



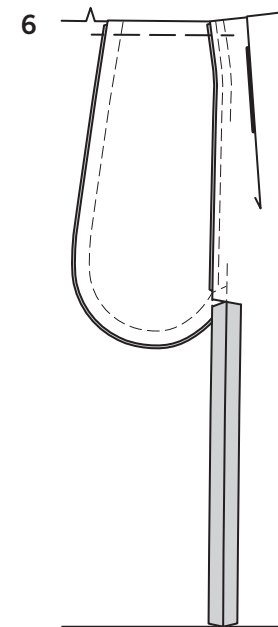
3. Make pleats in **BACK** (2), in same manner as front. Press pleat flat bringing stitching to center. Baste across raw edge.



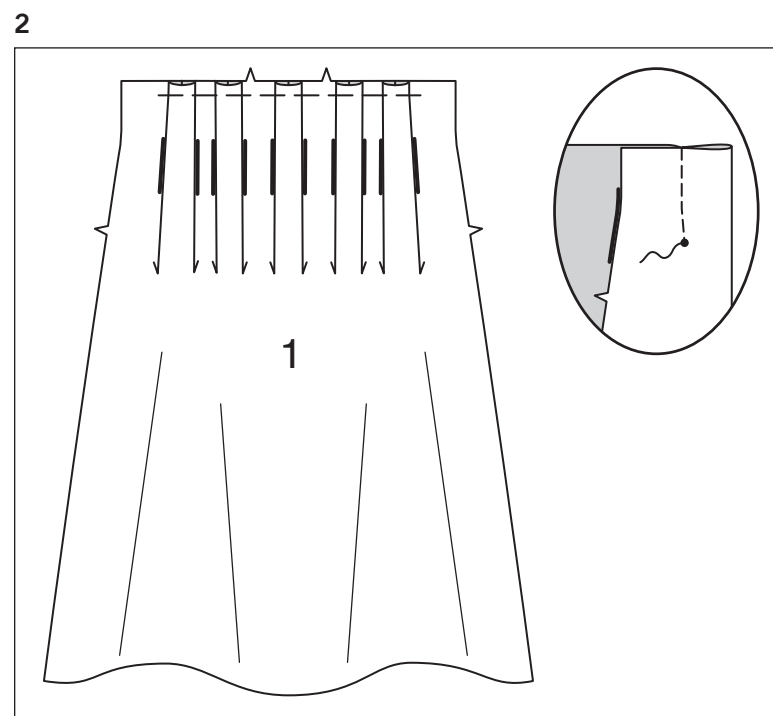
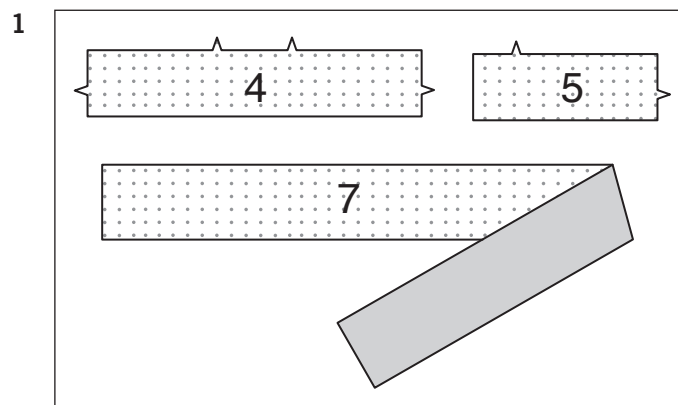
4. Stitch one **POCKET** (3) section to front and back at each side in 1/4"(6mm) seam. Press seams toward pockets.

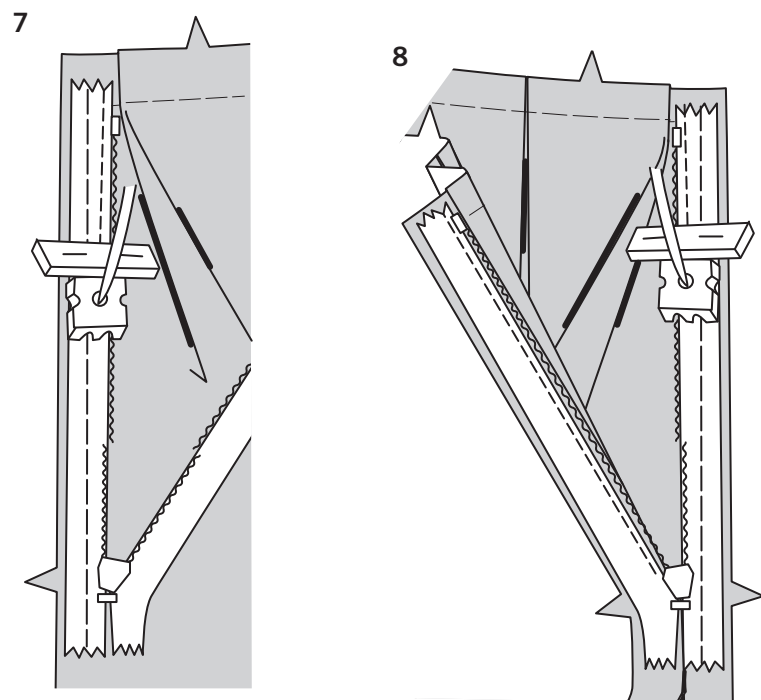


5. Stitch front and back together at sides, leaving open between large dots. Stitch pocket edges together to side seams. Clip back seam allowances below pockets.



6. Turn pockets toward front along seamlines; press. **VIEW A, B-** Baste upper edge of pocket in place.





## ZIPPER

**NOTE:** Stitch zipper using an adjustable zipper foot. For more assistance see Zippers: "sewing an invisible zipper" video.

**7.** Open the zipper and press the tape using a cool iron. On **OUTSIDE**, pin **RIGHT** side of the zipper face down on the **RIGHT** side of the zipper opening, keeping pleat free. Have the coil along the seam line, the tape within the seam allowance and the top stop  $3/4"$  (2cm) below upper edge, as shown. Hand-baste along center of the tape. Position zipper foot at the top of the zipper with **RIGHT** groove of the foot over coil. Stitch along tape to the notch. Back-stitch to reinforce.

**8.** Pin the remaining half of the zipper to the **LEFT** side of the zipper opening in same manner. Make sure the upper and lower edges of the garment are even. Hand-baste along the center of the tape. Position zipper foot at the top of the zipper with **LEFT** groove over the coil. Stitch along tape to the notch. Back-stitch to reinforce.

**9.** Close zipper and check that it is invisible from the **OUTSIDE**. Pull the free ends of the zipper tape away from the seam allowance. Pin remaining center back seam together below zipper. Position zipper foot all the way to the **LEFT** so the needle goes down through the outer notch of the foot. Start stitching seam  $1/4"$  (6mm) above lowest stitch and slightly to the **LEFT**. Stitch seam for about  $3"$  (7.5cm). Stitch remainder of seam using your regular presser foot. If you prefer, open out each seam allowance at end of zipper and stitch tape to seam allowance.

## FINISHING

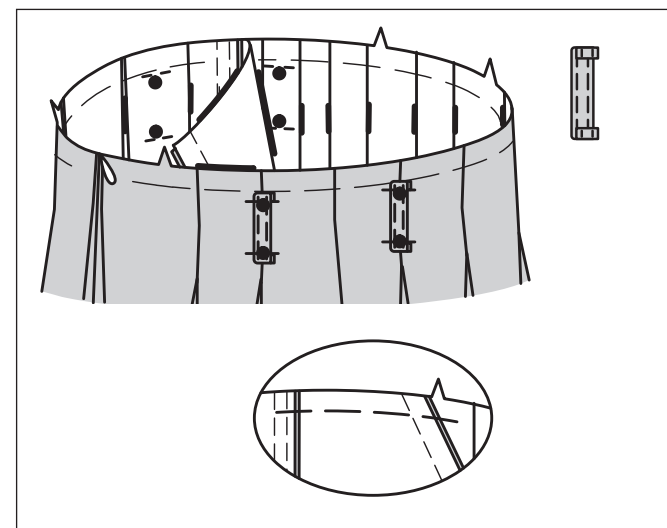
**NOTE:** For more assistance with constructing carriers, see Loops and Straps: "how to sew belt loops" video.

**10.VIEW C-** Fold **CARRIER** (6) in half, lengthwise with **WRONG** sides together. Press, setting in a crease.

**11.** Open out long edges of carrier and turn them to **WRONG** side so that they meet at the crease. Press.

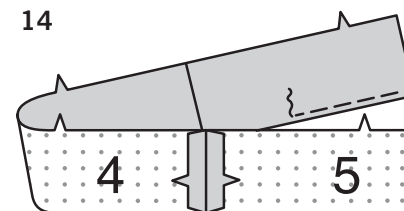
**12.** Fold carrier in half lengthwise, bringing pressed edges together. Stitch close to both long edges.

13



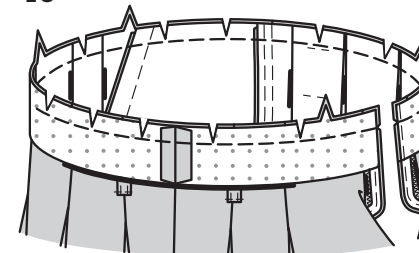
**13.** Cut four carriers each measuring  $2-1/2"$  (long) Fold under  $1/4"$  (6mm) on ends of carriers. On **OUTSIDE**, pin carriers to front and back, centering ends over large dots, as shown. **EDGESTITCH** ends of carriers in place, keeping pocket free. Press pockets toward front. Baste upper edge of pocket in place.

14

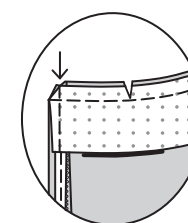


**14.VIEW A, B, C-** With **RIGHT** sides together, pin **BACK FACING** (5) to **FRONT FACING** (4) at side seams. **FINISH** lower edge of facing.

15



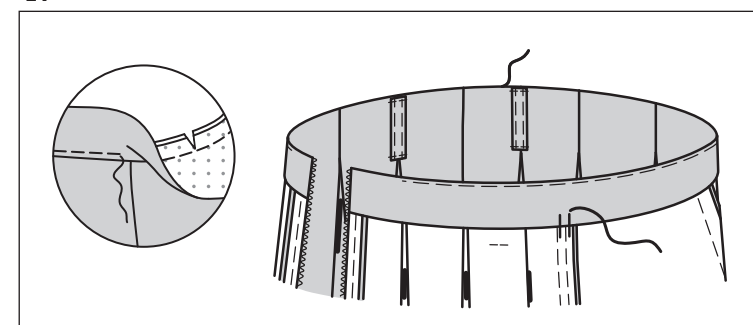
16



**15.** Open out center back opening edges of skirt, rolling the zipper teeth away from the opening edge. With **RIGHT** sides together, pin facing to skirt, matching centers and side seams. Stitch upper edge. **TRIM SEAM**; clip curves.

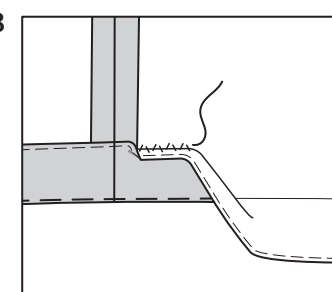
**16.** Pin back opening edges together. Using an adjustable zipper foot, stitch  $1/2"$  (1.3cm) from back edges, keeping zipper teeth free. Trim corners. Do not trim center back edges.

17



**17. UNDERSTITCH** facing as far as possible. Turn facing and back edges to **INSIDE**, rolling zipper teeth back in place; press. To keep the facing from rolling to **OUTSIDE**, **TACK** facing at seam allowances.

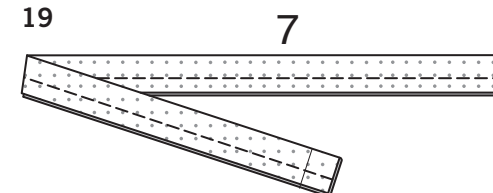
18



**18.** Turn up  $1-1/4"$  (3.2cm) hem. Baste close to fold. **FINISH** raw edge. Sew hem in place. Press.

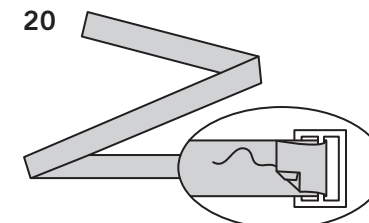
## BELT C

19

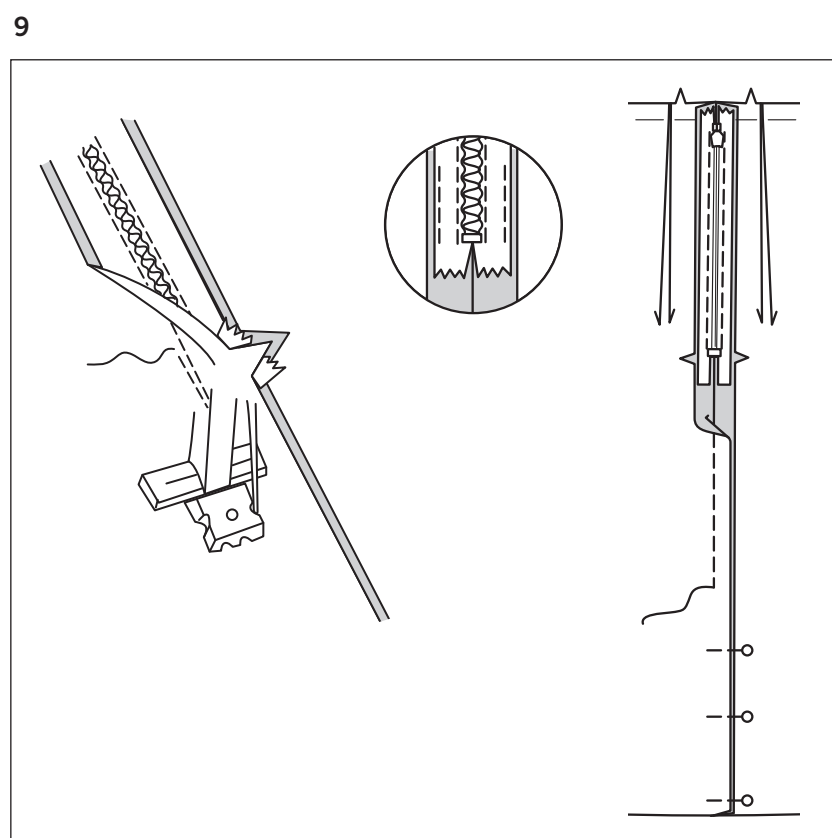


**19.** Fold **BELT** (7) in half lengthwise, with **RIGHT** sides together. Stitch outer edge, leaving end with fold line open. **TRIM SEAM**.

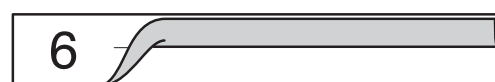
20



**20.** Turn belt **RIGHT** side out. Press. Feed raw end of belt through end of buckle, pressing under  $1/4"$  (6mm) on raw edge of belt. **SLIPSTITCH** or stitch end of belt in place.



10



11



12

