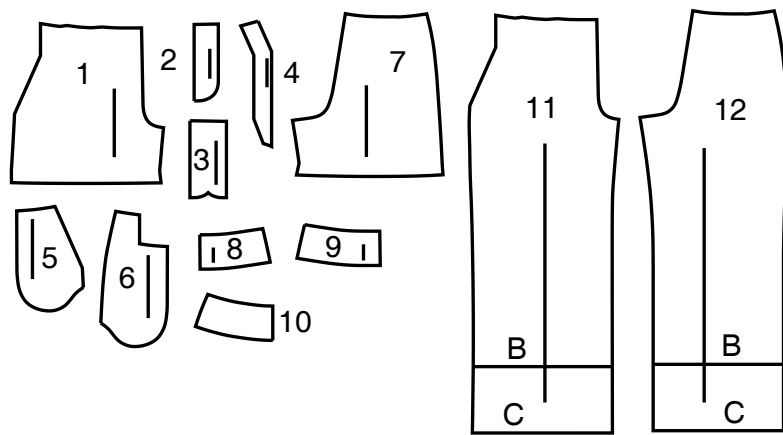


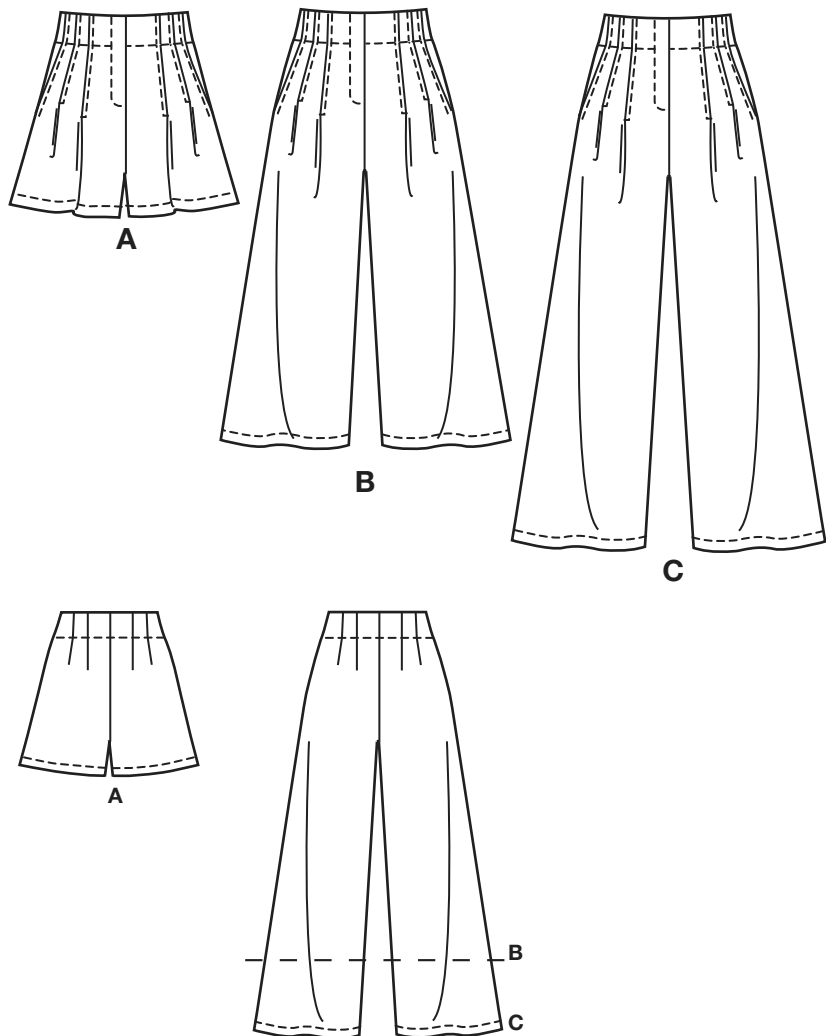
Simplicity®

Thank you for purchasing this Simplicity pattern. We made every effort to provide you with a high quality product.

12 PIECES



- 1 Front-A
- 2 Right Fly Facing-A,B,C
- 3 Left Fly-A,B,C
- 4 Pocket Interfacing-A,B,C
- 5 Pocket Facing-A,B,C
- 6 Side Front and Pocket-A,B,C
- 7 Back-A
- 8 Right Front Facing-A,B,C
- 9 Left Front Facing-A,B,C
- 10 Back Facing-A,B,C
- 11 Front-B,C
- 12 Back-B,C



General Directions

The Pattern

- SYMBOLS**
- ↔ GRAIN LINE Place on straight grain of fabric parallel to selvage
 - ⇄ PLACE SOLID LINE on fold of fabric.
 - CENTER FRONT OR BACK of garment.
 - ▽▽ NOTCHES
 - ○ DOTS
 - CUTTING LINE
 - == LENGTHEN OR SHORTEN LINES

SEAM ALLOWANCE: 5/8" (1.5cm) unless otherwise stated is included but not printed on MULTI-SIZE PATTERNS. Mark your size with colored felt tip pen. See chart on tissue for how to use MULTI-SIZE PATTERNS.

ADJUST IF NEEDED

Make adjustments before placing pattern on fabric.

TO LENGTHEN: Cut pattern between lengthen or shorten lines. Spread pattern evenly, the amount needed and tape to paper.

TO SHORTEN: At lengthen or shorten lines, make an even pleat taking up amount needed. Tape in place.

When lengthen or shorten lines are not given, make adjustments at lower edge of pattern.

Cutting/Marking

BEFORE CUTTING:

PRESS pattern pieces with a warm dry iron. PRE-SHRINK fabric by pre-washing washables or steam-pressing non-washables.

CIRCLE your cutting layout.

PIN pattern to fabric as shown in Cutting Layouts.

• FOR DOUBLE THICKNESS: Fold fabric with RIGHT sides together.

• FOR SINGLE THICKNESS: Place fabric RIGHT side up.

• FOR PILE, SHADED OR ONE WAY DESIGN FABRICS: Use "with nap" layouts

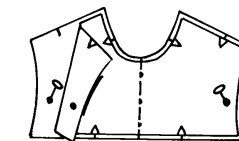
AFTER CUTTING:

Transfer markings to WRONG side of fabric before removing pattern. Use pin and chalk method or dressmaker's tracing paper and wheel.

To Quick Mark:

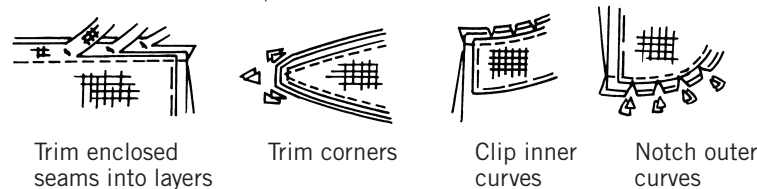
• Snip edge of fabric to mark notches, ends of fold lines and center lines.

• Pin mark dots.



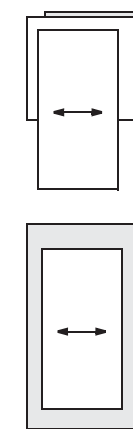
Sewing

- SEW garment following **Sewing Directions**.
- PIN or machine-baste seams matching notches.
- STITCH 5/8" (1.5 cm) seams unless otherwise stated.
- PRESS seams open unless otherwise indicated clipping when necessary so seams will lie flat.
- TRIM seams to reduce bulk, as shown below.

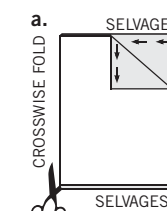


SPECIAL CUTTING NOTES

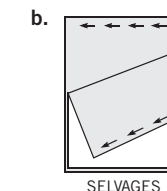
★ If layout shows a piece extending past fold, cut out all pieces except piece that extends.



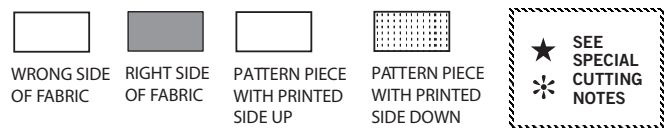
✱ Mark small arrows along both selvages indicating direction of nap or design. Fold fabric crosswise with RIGHT sides together, and cut along fold (a).



Turn one fabric layer around so arrows on both layers go in the same direction. Place RIGHT sides together (b).



Cutting Layouts

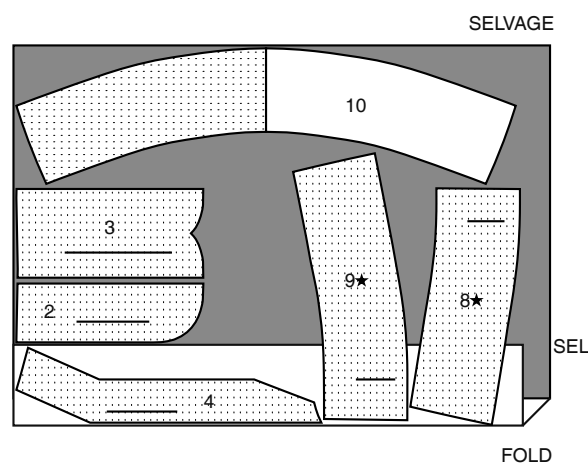


POSITION OF PATTERN PIECES MAY VARY SLIGHTLY ACCORDING TO YOUR PATTERN SIZE

INTERFACING A,B,C

USE PIECES 2 3 4 8 9 10

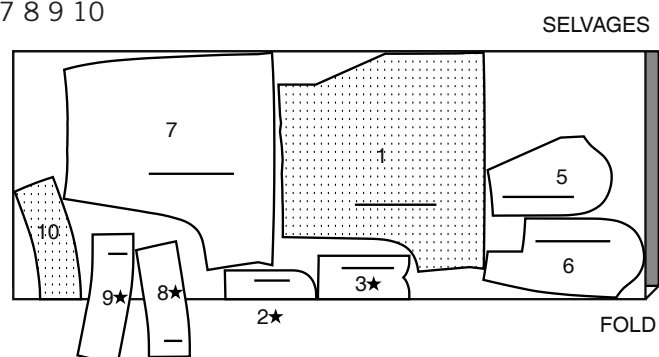
20" (51CM) ALL SIZES



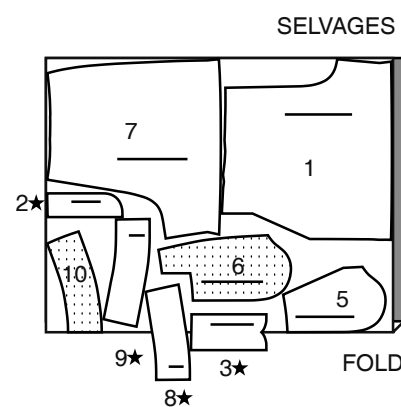
SHORTS A

USE PIECES 1 2 3 5 6 7 8 9 10

45" (115CM) WITH NAP ALL SIZES



60" (150CM) WITH NAP ALL SIZES

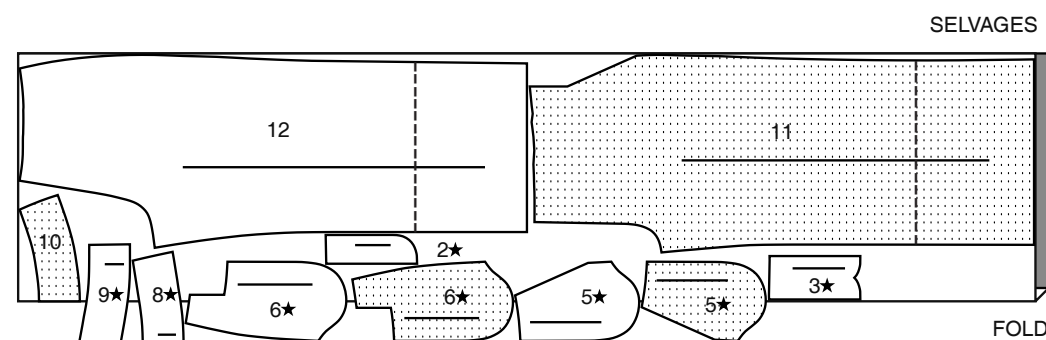


PANTS B,C

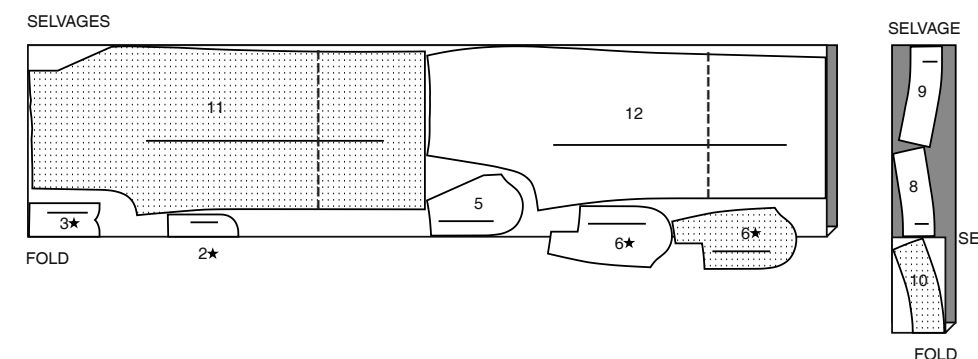
USE PIECES 2 3 5 6 8 9 10 11 12

NOTE: DASHED LINE SHOWN ON PATTERN PIECES IN CUTTING LAYOUTS INDICATES CUTTING LINE FOR SHORTER LENGTH

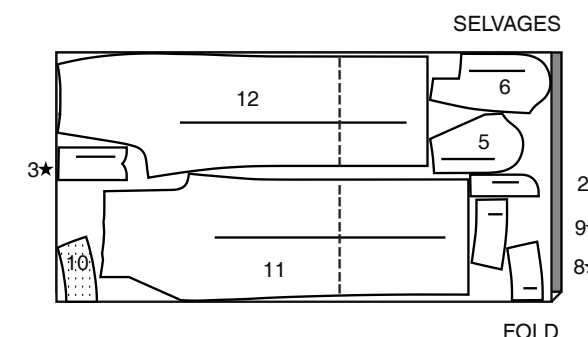
45" (115CM) WITH NAP SIZES 4 6 8 10 12 14 16



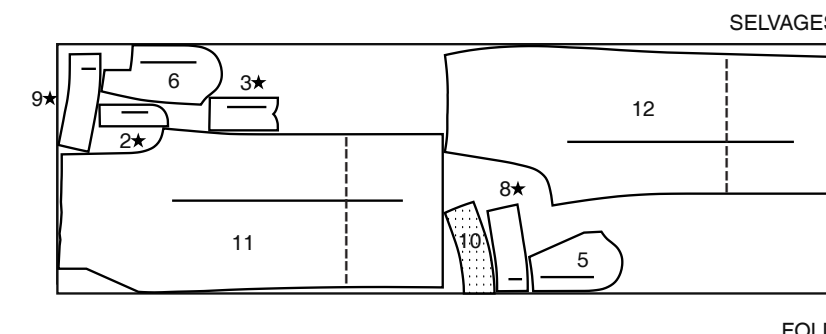
45" (115CM) WITH NAP SIZES 18 20 22



60" (150CM) WITH NAP SIZES 4 6



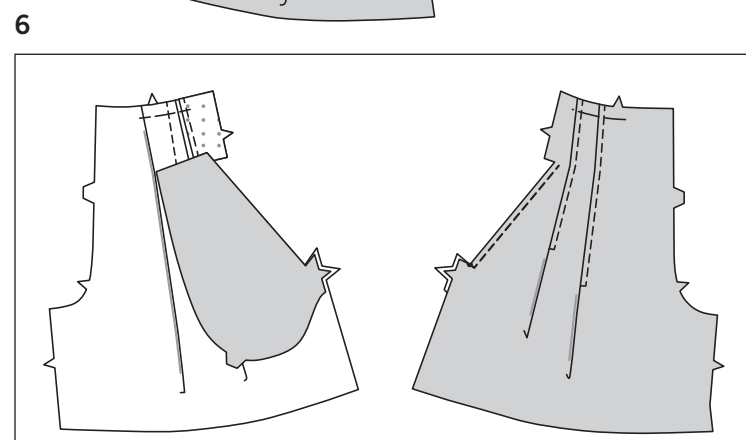
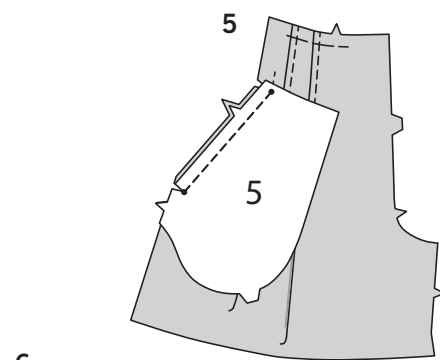
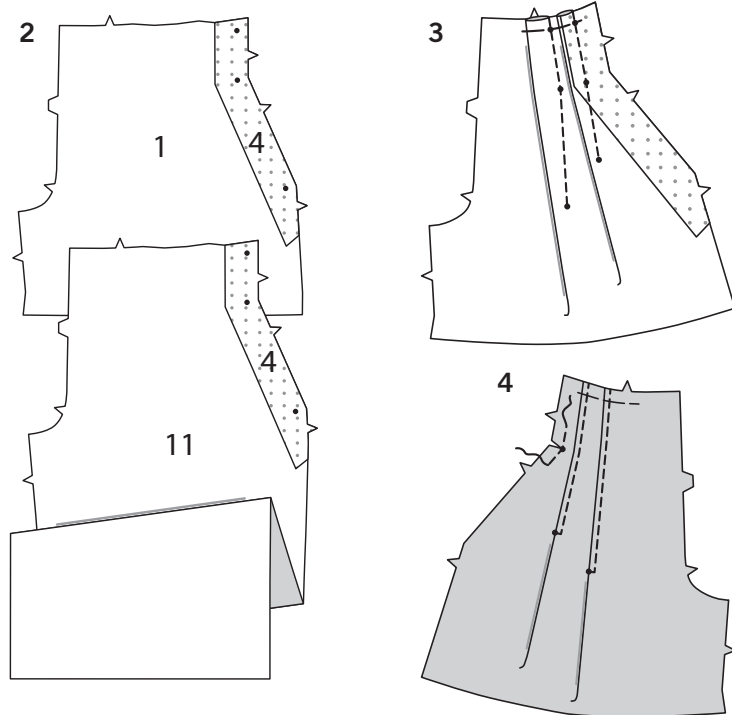
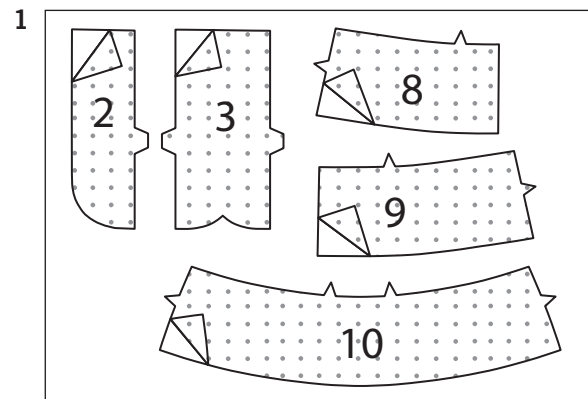
60" (150CM) WITH NAP SIZES 8 10 12 14 16 18 20 22



SEWING TUTORIALS



Build your skills viewing short, easy-to-follow videos at simplicity.com/sewingtutorials



Sewing Directions

FABRIC KEY RIGHT SIDE WRONG SIDE INTERFACING LINING LINING

Read **General Directions** on page 1 before you begin.

Sewing methods in **BOLD TYPE** have Sewing Tutorial Video available. Scan QR CODE to watch videos:

FINISH – See Seams: “how to finish seam allowances” video.

DART – See Darts: “sewing flat dart” video.

REINFORCE – See Machine Stitches: “how to reinforce seams” video.

SLIPSTITCH – See Hand Stitching: “how to slip stitch” video.

TOPSTITCH – See Machine Stitches: “how to topstitch” video.

UNDERSTITCH – See Machine Stitches: “how to understitch” video.

SHORTS A, PANTS B, C

INTERFACING

1. Apply INTERFACING to each matching FABRIC section.

FRONT AND BACK

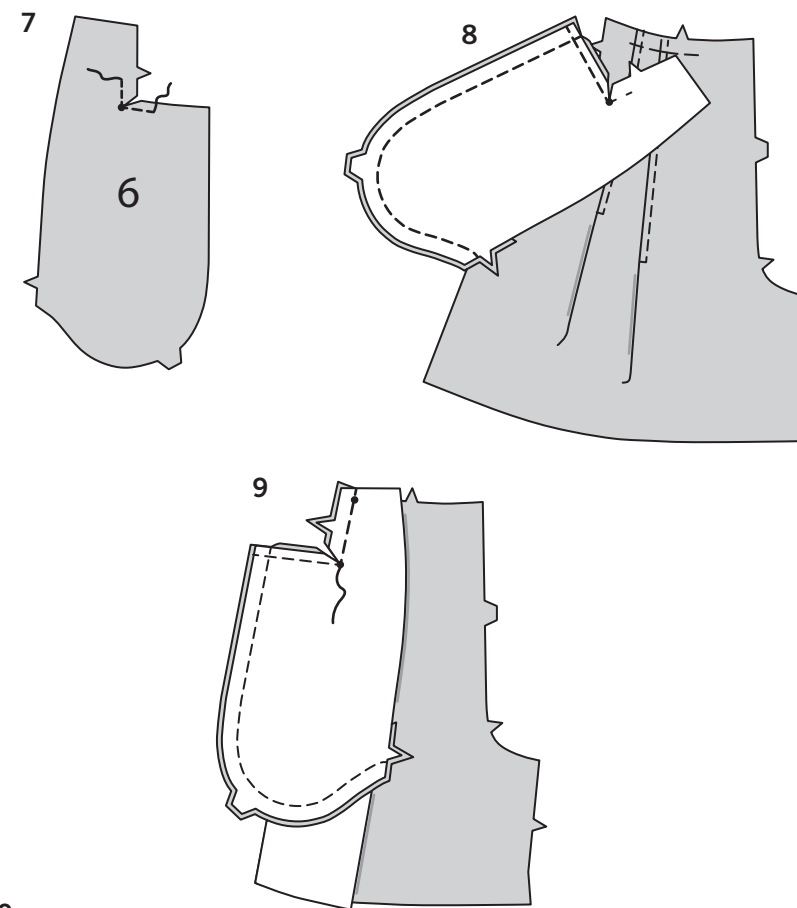
2. Pin POCKET INTERFACING (4) to WRONG side of FRONT (1) or FRONT (11), matching notches and small dots. Fuse, following manufacturer’s instructions.

3. To make pleats in front, on INSIDE, bring lines of small dots together. Stitch pleats, along broken line, ending stitching at lower small dots. Press pleats toward front. Baste across upper edge.

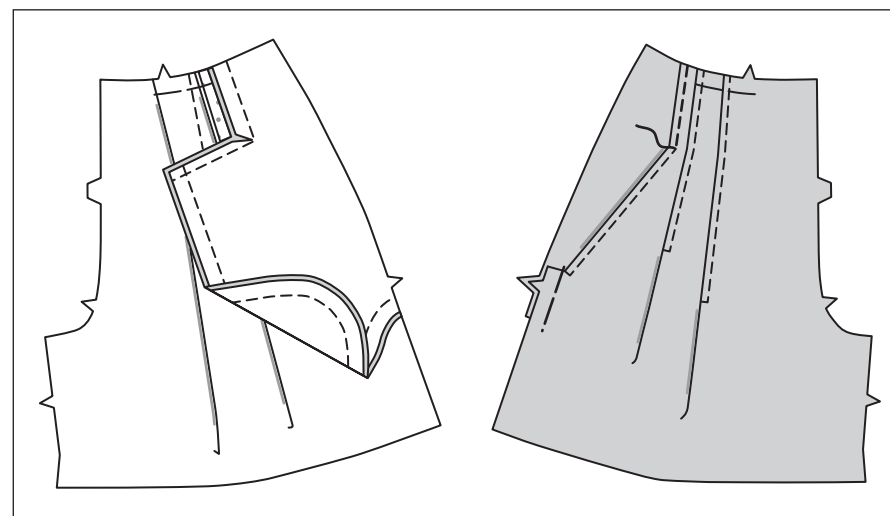
4. **TOPSTITCH** pleats, pivoting stitching to lower small dots. **REINFORCE** inner corner of front through small dot, as shown. Clip to small dot.

5. With RIGHT sides together, pin one POCKET FACING (5) section to each front at side edge, matching small dots and notches. Stitch between small dots. Clip to lower small dot.

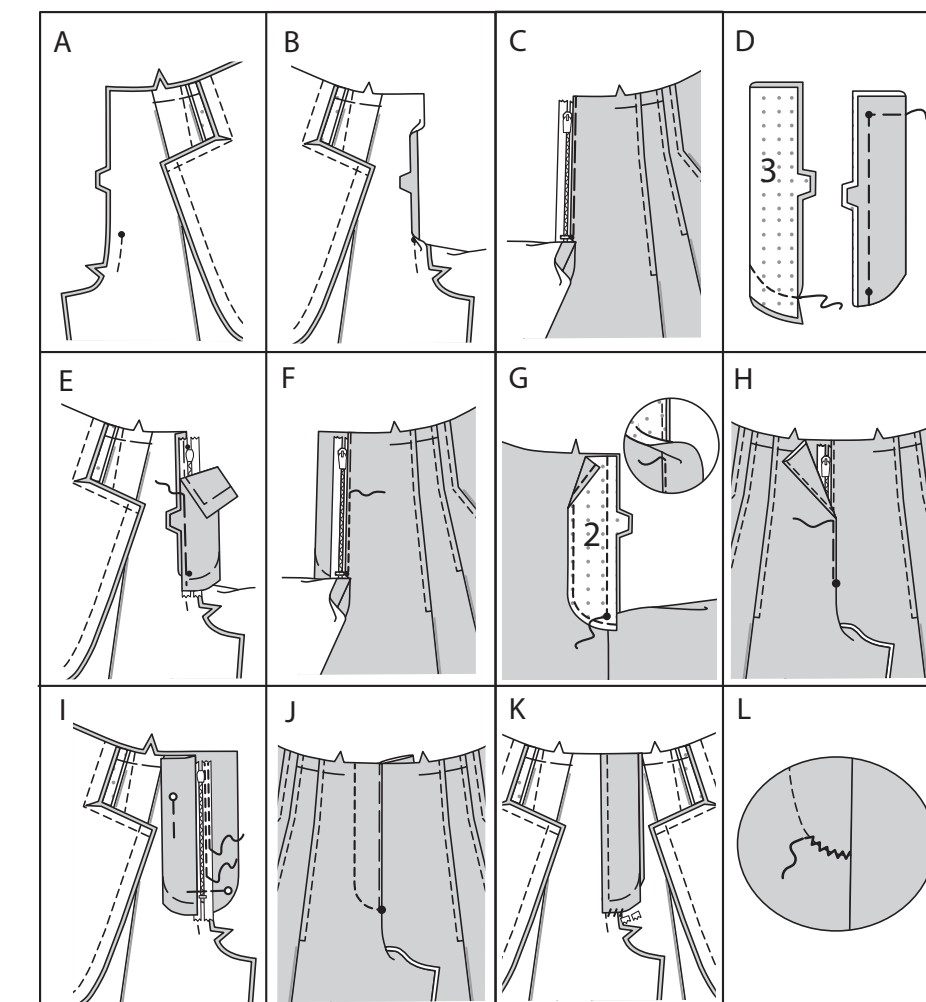
6. Press pocket facing to INSIDE. **TOPSTITCH** pocket opening, as shown, pivoting stitching to seam at lower dot.



10



11



7. **REINFORCE** inner corner of SIDE FRONT AND POCKET (6) through small dot. Clip to small dot.

8. Open out pocket facing. With RIGHT sides together, pin side front and pocket to pocket facing, matching notches and small dots. Stitch outer edge, as shown. Stitch upper edge to small dot in a 3/8”(1cm) seam.

9. With RIGHT sides together, pin side front and pocket to front, matching notches. Stitch to small dot. Press seam toward front.

10. **TOPSTITCH** front seam, connecting with previous stitching, as shown. Baste side edges.

ZIPPER, BACK AND FINISHING

11. Construct fly front as follows:

A- Stitch front sections together at center front between large dot and notch.

B- Turn in left front opening edge along foldline; press.

C- Place closed zipper (face up) under left front opening edge, having pressed edge close to zipper teeth and zipper stop at small dot. Taper upper edge of zipper tape toward right front. Using a zipper foot, baste close to pressed edge.

D- With RIGHT sides together, fold LEFT FLY (3) in half lengthwise. Stitch upper and lower edges. Trim. Turn. Press. Baste raw edges.

E- On inside, pin left fly to left front opening edge (over zipper), matching notches and small dots, having raw edges even. Baste along previous basting for zipper.

F- On outside, using a zipper foot, stitch close to pressed edge of front through all layers.

G- FINISH outer edge of RIGHT FLY FACING (2). Pin fly facing to right front opening edge, matching notches, and large dots. Stitch, ending at large dot. Trim. **UNDERSTITCH** fly facing. Turn facing to inside.

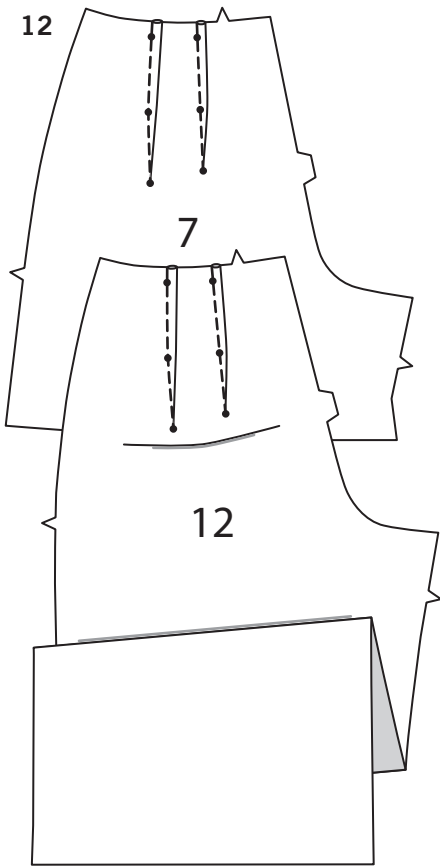
H- Lap right front over left, matching centers. Baste close to edge through all thicknesses.

I- Pin left fly out of the way. Open out fly facing. Pin remaining zipper tape to fly facing, keeping right front free. Using a zipper foot, stitch in place close to zipper teeth and along center of zipper tape.

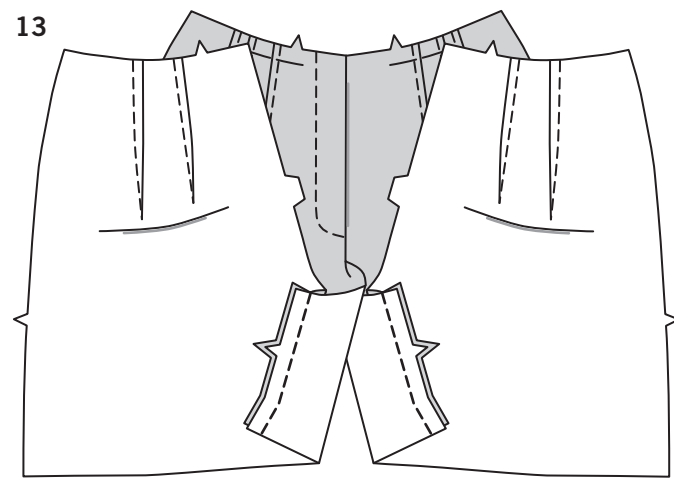
J- Turn facing down. On outside, stitch right front along stitching line, keeping left fly free.

K- Turn left fly back in place. On inside, hand tack fly and facing together at lower edge, as shown. Trim away excess zipper tape even with lower edge of fly, if needed.

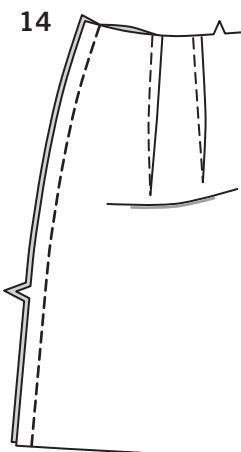
L- If desired, on outside, machine-stitch a bar tack across lower end of fly through all thicknesses.



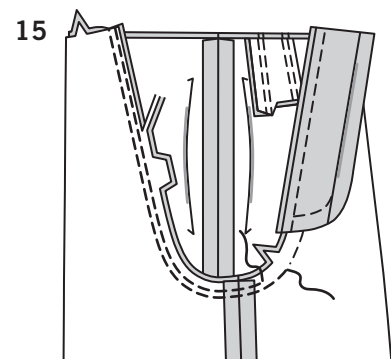
12. Stitch **DARTS** in BACK (7) or BACK (12). Press darts toward center.



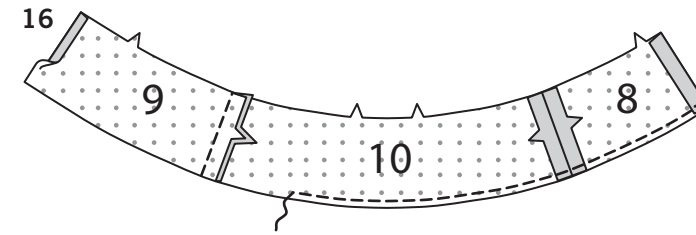
13. Stitch front and back together at inner leg edge.



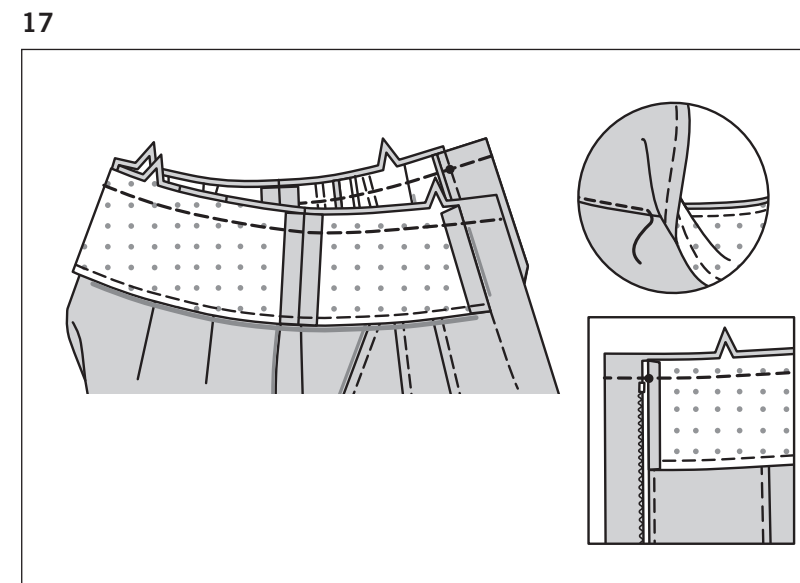
14. Stitch front to back at sides.



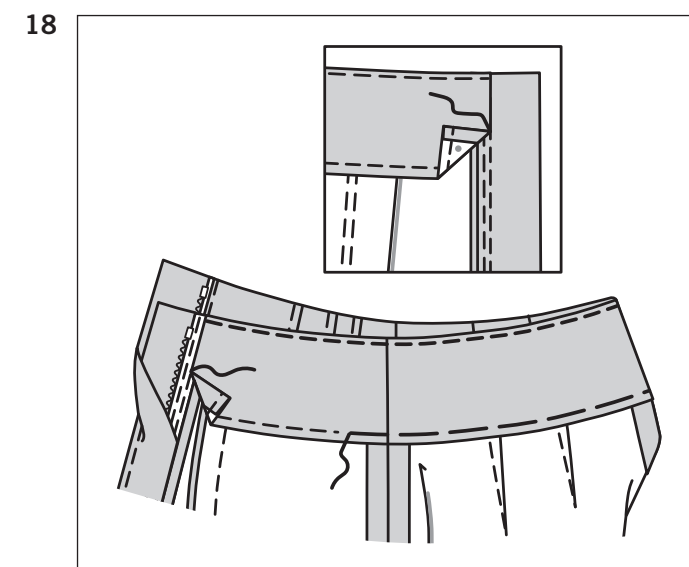
15. For crotch seam, turn one pant leg right side out; slip inside remaining pant leg. Stitch, connecting to previous stitching in front. Stitch again 1/4" (6mm) away in seam allowance along curve. Trim close to second stitching.



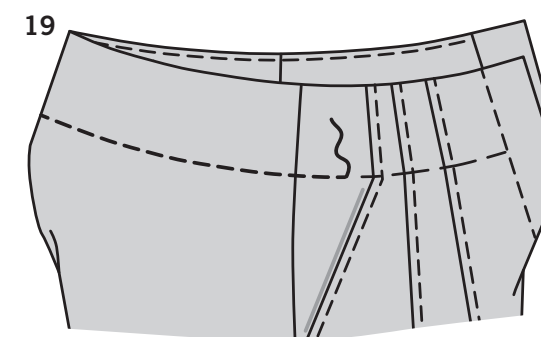
16. Stitch **RIGHT FRONT FACING** (8) and **LEFT FRONT FACING** (9) to **BACK FACING** (10) at side edges.
FINISH lower edge of facing. Press under 5/8" (1.5cm) seam allowance on right front edge of facing. Press under 3/8" (1cm) seam allowance on left front edge of facing.



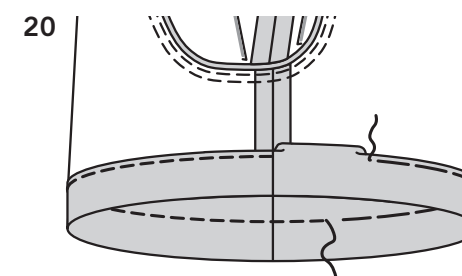
17. With **RIGHT** sides together, pin facing to upper edge of garment, matching notches, small dots and side seams. Stitch. Trim seam. **UNDERSTITCH** facing.



18. Turn facing to **INSIDE**. Press. **SLIPSTITCH** left pressed edge over seam. **SLIPSTITCH** right pressed edge to zipper tape. Baste facing in place close to finished edge.



19. **TOPSTITCH** garment along basting, ending stitching at right fly facing stitching, as shown.



20. Mark garment length. Press up hem along marking. Mark depth of hem; trim evenly. Press under 1/4" (6mm) on raw edge. Baste close to inner pressed edge. **TOPSTITCH** hem along basting.