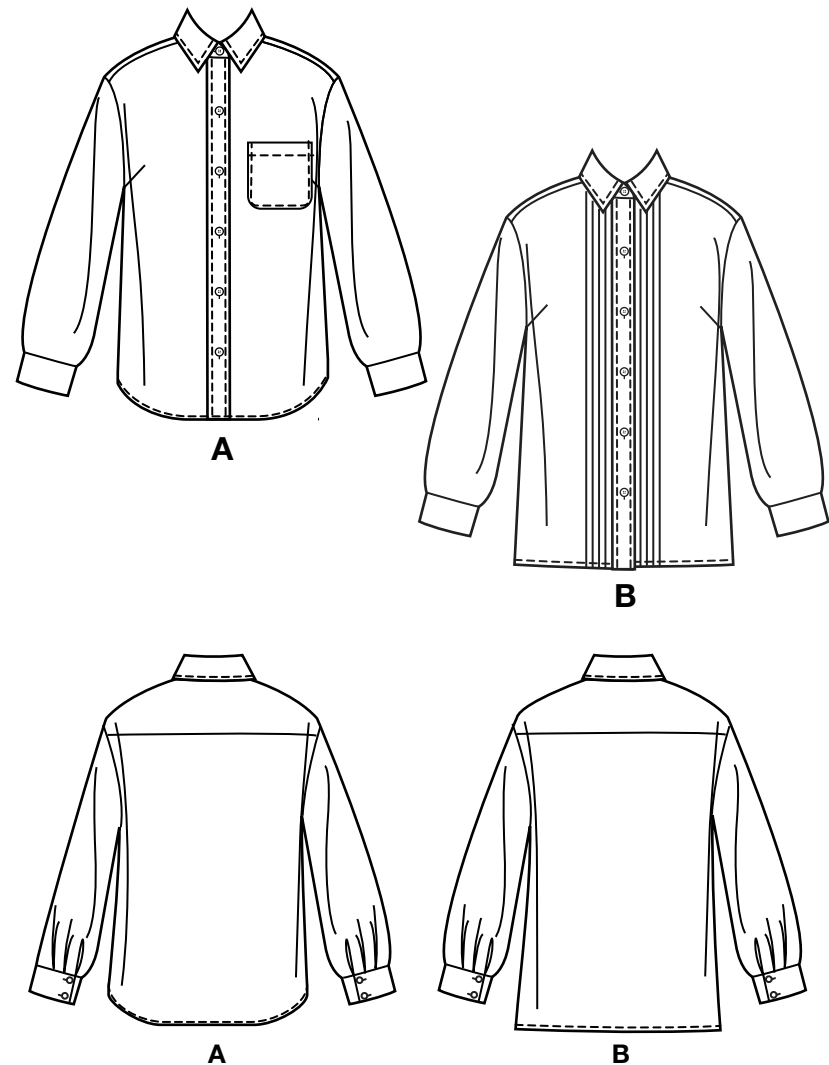
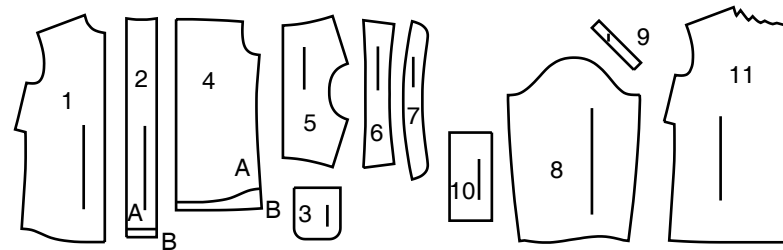


Simplicity®

Thank you for purchasing this Simplicity pattern. We made every effort to provide you with a high quality product.



11 PIECES



- 1 Front-A
- 2 Placket-A,B
- 3 Pocket-A
- 4 Back-A,B
- 5 Back Yoke-A,B
- 6 Collar-A,B
- 7 Neckband-A,B
- 8 Sleeve-A,B
- 9 Continuous Lap-A,B
- 10 Cuff-A,B
- 11 Front-B

MISSES' SIZES	10	12	14	16	18
EUROPEAN	36	38	40	42	44

FINISHED GARMENT MEASUREMENTS (Includes Design and Wearing Ease)						
A,B Bust	38	39½	41½	43½	45½	Ins.
Width, lower edge						
Shirt B	39½	41	43	45	47	Ins.
Finished back length from base of neck						
Shirt A	26	26¾	26½	26¾	27	Ins.
Shirt B	27	27¼	27½	27¾	28	"

WOMEN'S SIZES	20W	22W	24W	26W	28W	30W	32W	34W	36W	38W
EUROPEAN	46	48	50	52	54	56	58	60	62	64

FINISHED GARMENT MEASUREMENTS (Includes Design and Wearing Ease)											
A,B Bust	48	50	52	54½	57	59½	62	64½	67	69½	Ins.
Width, lower edge											
Shirt B	49¾	51¾	53¾	56¾	58¾	61¼	63¾	66¾	68¾	71¼	Ins.
Finished back length from base of neck											
Shirt A	28¾	29	29¼	29¾	29¾	30	30¼	30¾	30¾	31	Ins.
Shirt B	29¾	30	30¼	30¾	30¾	31	31¼	31¾	31¾	32	"

General Directions

The Pattern

- SYMBOLS**
- ↔ GRAIN LINE Place on straight grain of fabric parallel to selvage
 - ⇓ PLACE SOLID LINE on fold of fabric.
 - CENTER FRONT OR BACK of garment.
 - ▽▽ NOTCHES
 - DOTS
 - CUTTING LINE
 - == LENGTHEN OR SHORTEN LINES

ADJUST IF NEEDED

Make adjustments before placing pattern on fabric.

TO LENGTHEN:
Cut pattern between lengthen or shorten lines. Spread pattern evenly, the amount needed and tape to paper.

TO SHORTEN:
At lengthen or shorten lines, make an even pleat taking up amount needed. Tape in place.

SEAM ALLOWANCE: 5/8" (1.5cm) unless otherwise stated is included but not printed on MULTI-SIZE PATTERNS. Mark your size with colored felt tip pen. See chart on tissue for how to use MULTI-SIZE PATTERNS.

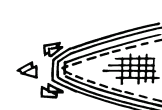
When lengthen or shorten lines are not given, make adjustments at lower edge of pattern.

Sewing

- SEW garment following **Sewing Directions**.
- PIN or machine-baste seams matching notches.
- STITCH 5/8" (1.5 cm) seams unless otherwise stated.
- PRESS seams open unless otherwise indicated clipping when necessary so seams will lie flat.
- TRIM seams to reduce bulk, as shown below.



Trim enclosed seams into layers



Trim corners



Clip inner curves



Notch outer curves

Cutting/Marking

BEFORE CUTTING:

PRESS pattern pieces with a warm dry iron. PRE-SHRINK fabric by pre-washing washables or steam-pressing non-washables.

CIRCLE your cutting layout.

PIN pattern to fabric as shown in Cutting Layouts.

• FOR DOUBLE THICKNESS: Fold fabric with RIGHT sides together.

• FOR SINGLE THICKNESS: Place fabric RIGHT side up.

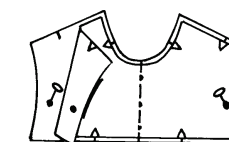
• FOR PILE, SHADED OR ONE WAY DESIGN FABRICS: Use "with nap" layouts

AFTER CUTTING:

Transfer markings to WRONG side of fabric before removing pattern. Use pin and chalk method or dressmaker's tracing paper and wheel.

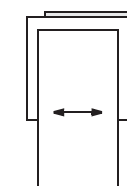
To Quick Mark:

- Snip edge of fabric to mark notches, ends of fold lines and center lines.
- Pin mark dots.

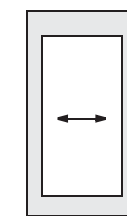


SPECIAL CUTTING NOTES

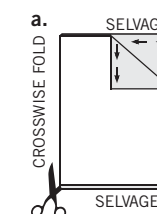
★ If layout shows a piece extending past fold, cut out all pieces except piece that extends.



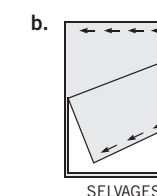
Open out fabric to single thickness. Cut extending piece on RIGHT side of fabric in position shown.



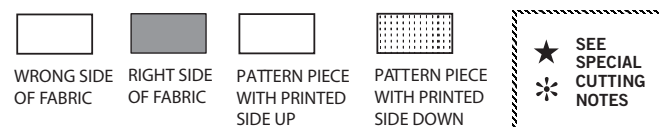
✱ Mark small arrows along both selvages indicating direction of nap or design. Fold fabric crosswise with RIGHT sides together, and cut along fold (a).



Turn one fabric layer around so arrows on both layers go in the same direction. Place RIGHT sides together (b).



Cutting Layouts



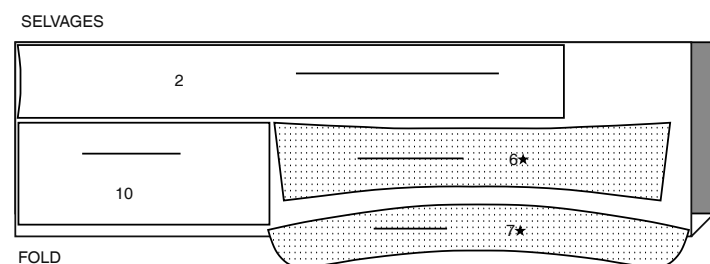
POSITION OF PATTERN PIECES MAY VARY SLIGHTLY ACCORDING TO YOUR PATTERN SIZE

MISSES

INTERFACING A,B

USE PIECES 2 6 7 10

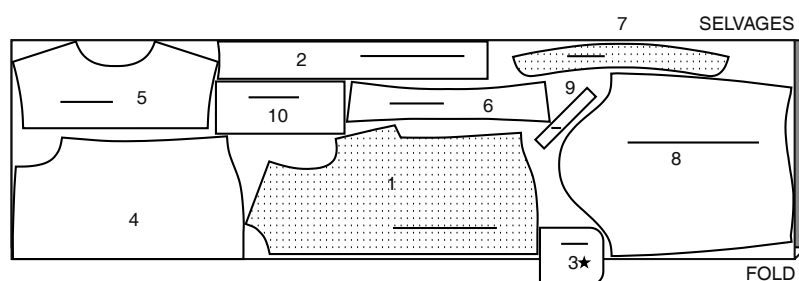
20" (51CM) WITHOUT NAP ALL SIZES



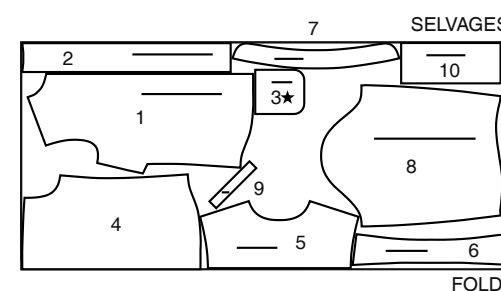
SHIRT A

USE PIECES 1 2 3 4 5 6 7 8 9 10

45" (115CM) WITH NAP ALL SIZES



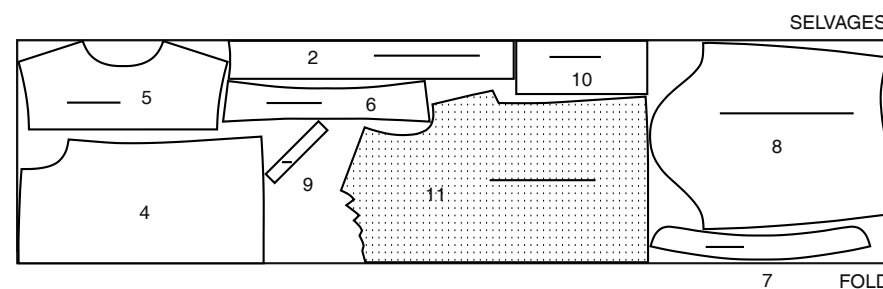
60" (150CM) WITH NAP ALL SIZES



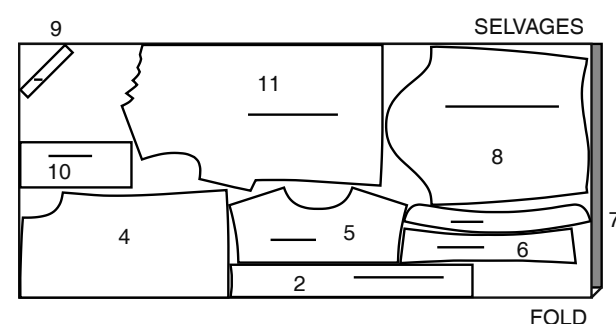
SHIRT B

USE PIECES 2 4 5 6 7 8 9 10 11

45" (115CM) WITH NAP ALL SIZES



60" (150CM) WITH NAP ALL SIZES

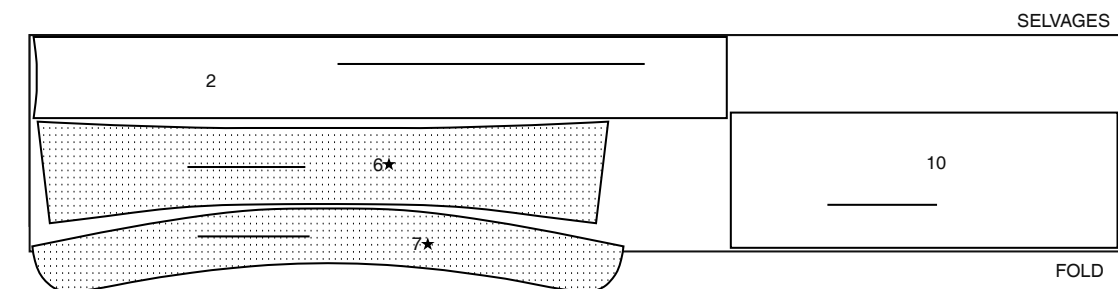


WOMEN'S

INTERFACING A,B

USE PIECES 2 6 7 10

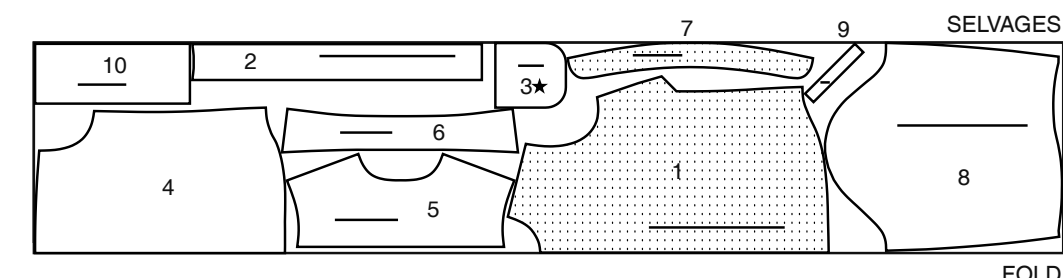
20" (51CM) WITHOUT NAP ALL SIZES



SHIRT A

USE PIECES 1 2 3 4 5 6 7 8 9 10

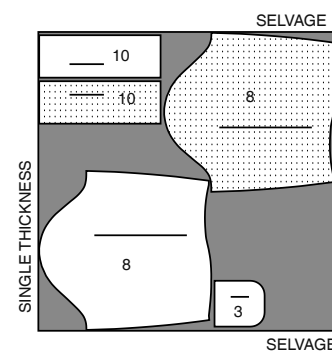
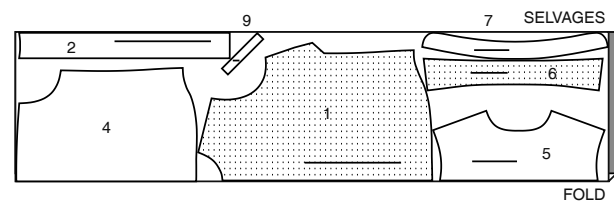
45" (115CM) WITH NAP SIZES 20W 22W 24W 26W 28W 30W 32W



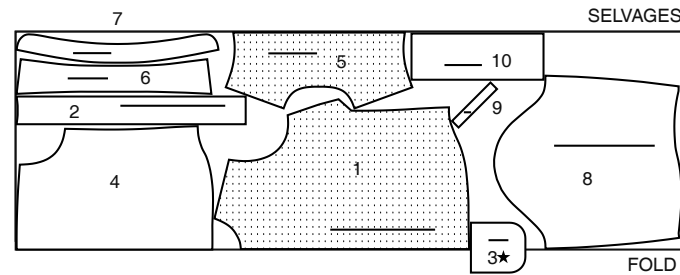
S3136

2 of 4

45" (115CM)
WITH NAP
SIZES 34W 36W 38W



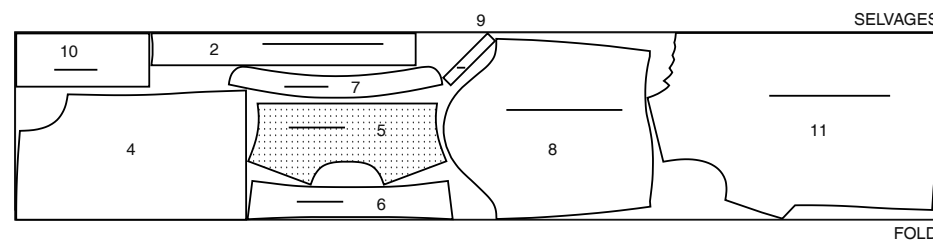
60" (150CM)
WITH NAP
SIZES 20W 22W 24W 26W 28W 30W 32W
34W 36W 38W



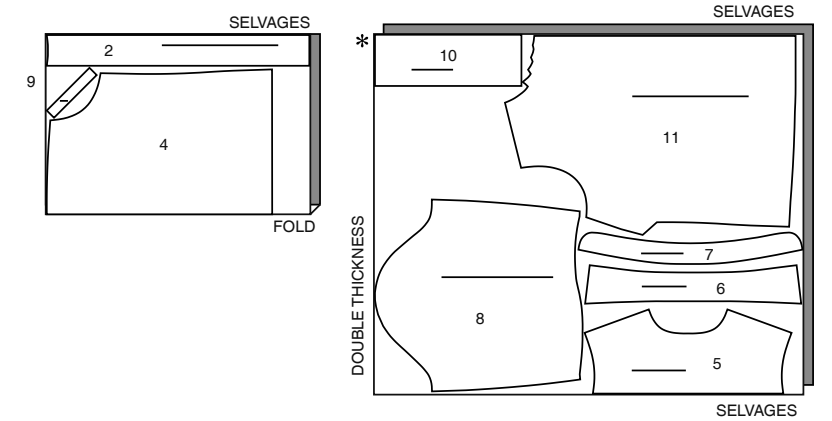
SHIRT B

USE PIECES 2 4 5 6 7 8 9 10 11

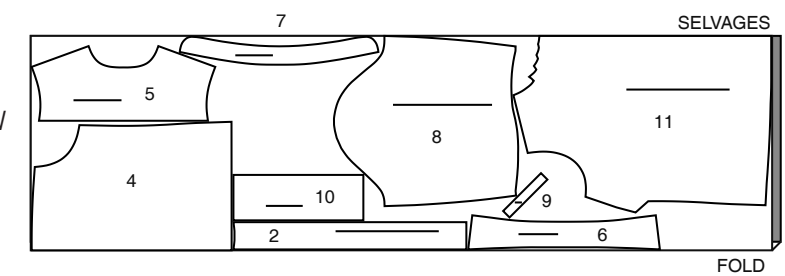
45" (115CM)
WITH NAP
SIZES 20W 22W 24W 26W 28W 30W



45" (115CM)
WITH NAP
SIZES 32W 34W 36W 38W



60" (150CM)
WITH NAP
SIZES 20W 22W 24W 26W
28W 30W 32W 34W 36W 38W



Sewing Directions



Sewing methods in **BOLD TYPE** have Sewing Tutorial Video available. Scan QR CODE to watch videos:

CONTINUOUS LAP – See **Armholes/Sleeves**: “how to sew a sewing a continuous lap” video.

EDGESTITCH – See **Machine Stitches**: “how to sew an edgestitch” video.

FLAT DART – See **Darts**: “sewing flat dart” video.

NARROW HEM – See **Hems**: “sewing narrow hems” video.

REINFORCE – See **Machine Stitches**: “how to reinforce seams” video.

SET IN SLEEVE – See **Armholes/Sleeves**: “sewing a set in sleeve” video.

SLIPSTITCH – See **Hand Stitching**: “how to slip stitch” video.

STAYSTITCH – See **Machine Stitches**: “how to do stay stitching” video.

STITCH IN THE DITCH – See **Machine Stitches**: “how to stitch in the ditch” video.

TOPSTITCH – See **Machine Stitches**: “how to topstitch” video.

TRIM SEAM – See **Seams**: “how to trim, clip and layer seams” video.

UNDERSTITCH – See **Machine Stitches**: “how to understitch” video.

SHIRT A, B

NOTE: Under each sub-heading, view A will be shown unless otherwise indicated.

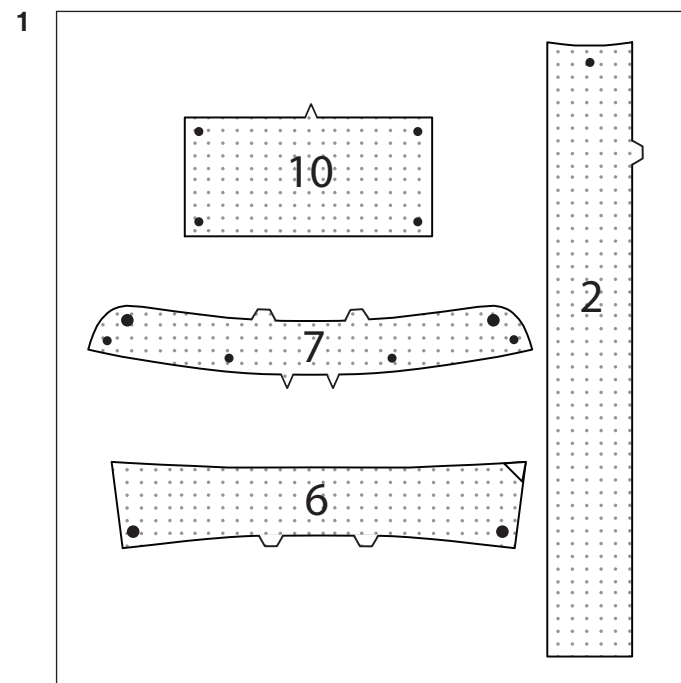
INTERFACING

1. Pin INTERFACING to wrong side of each matching FABRIC section. Fuse, following manufacturer's instructions. Trim corners of interfacing as shown.

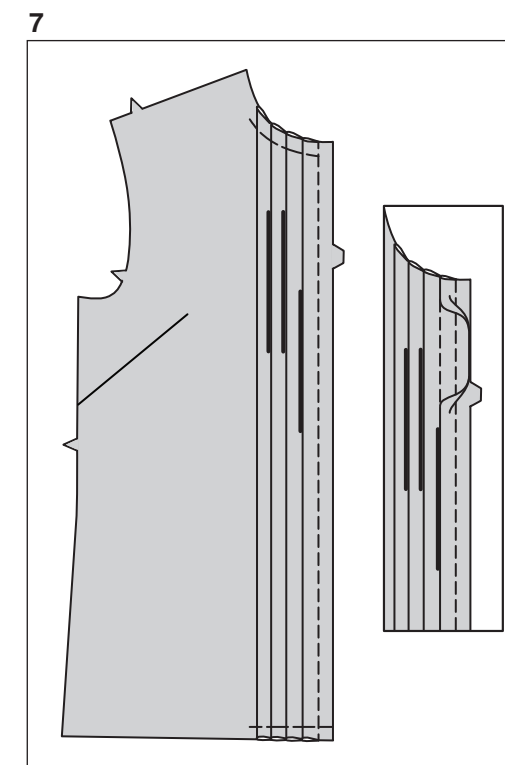
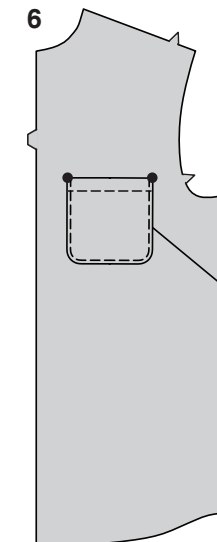
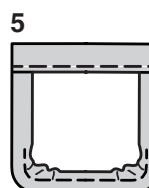
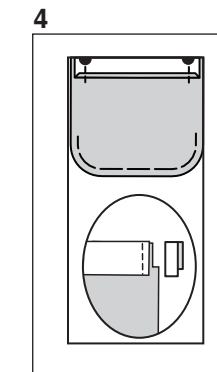
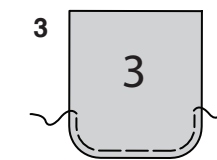
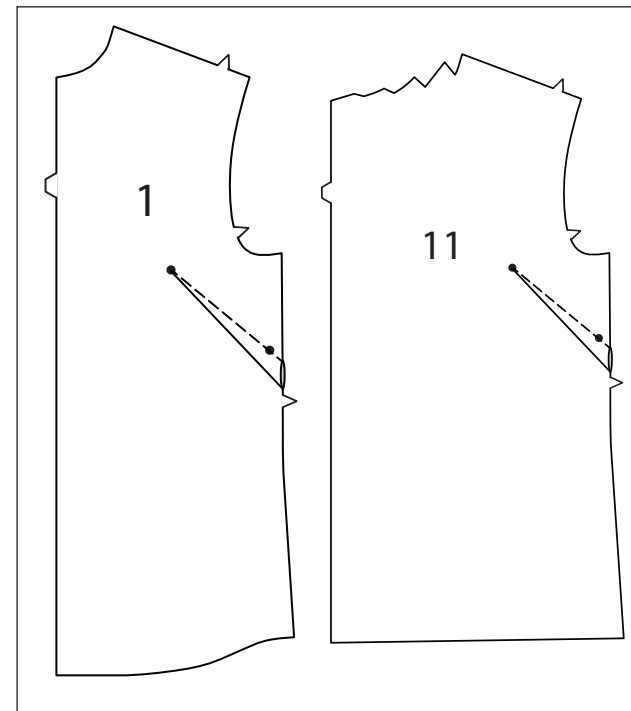
SEWING TUTORIALS



Build your skills viewing short, easy-to-follow videos at simplicity.com/sewingtutorials



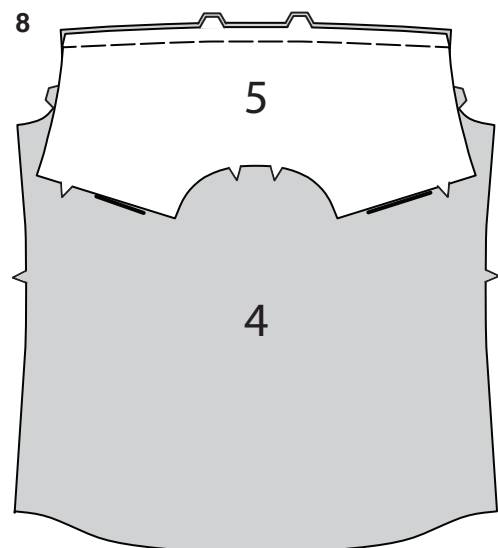
2



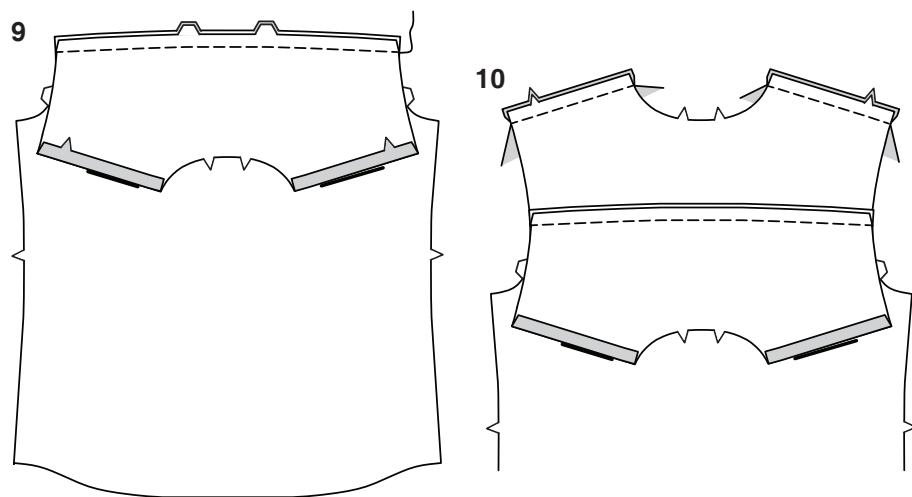
FRONT AND BACK

2. Make **FLAT DARTS** in FRONT (1 OR 11) sections. Press darts down.
3. **VIEW A-** Stitch curved edges of **POCKET (3)** 3/8”(1cm) from raw edge, using long machine stitches, as shown.
4. Turn upper edge to **OUTSIDE** along foldline; stitch ends. Trim as shown.
5. Turn upper edge of pocket to **INSIDE**, turning in seam allowances on remaining edges; pull threads to ease in fullness on curves. Press. Stitch close to inner pressed edge.
6. Pin pocket to **LEFT** front, matching large dots. **EDGESTITCH** side and lower edges.
7. **VIEW B-** To form tucks, fold front sections along foldline. Stitch 1/2”(1.3cm) from folded edge, forming tuck. Press tucks away from center. Baste across raw edges.

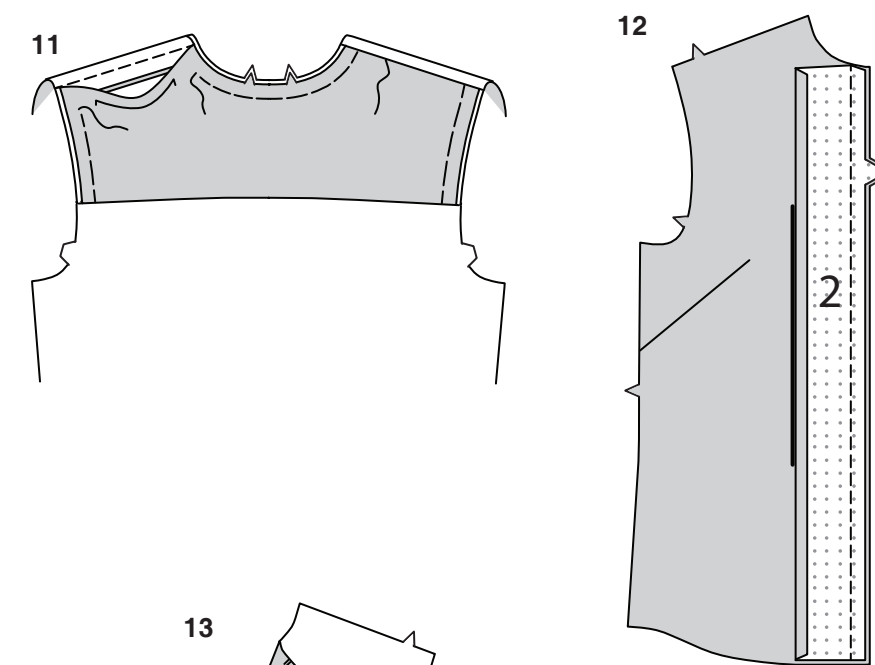
CONTINUE AS FOLLOWS FOR BOTH VIEWS



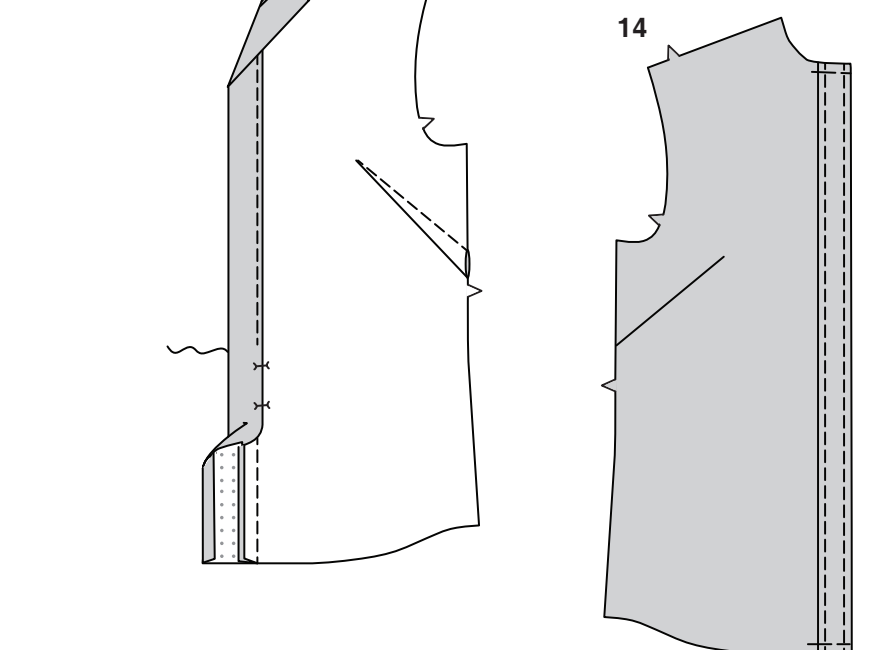
8. With RIGHT sides together, pin BACK YOKE (5) to upper edge of BACK (4). Baste. Remaining back yoke section will be used as facing.



9. Press under seam allowance on shoulder edges of back yoke facing section. On INSIDE, pin RIGHT side of facing, to WRONG side of back, matching notches. Stitch through all thicknesses.



10. Press yoke sections up. With RIGHT sides together, stitch front to back at shoulder and side seams, keeping pressed edge of yoke facing free.

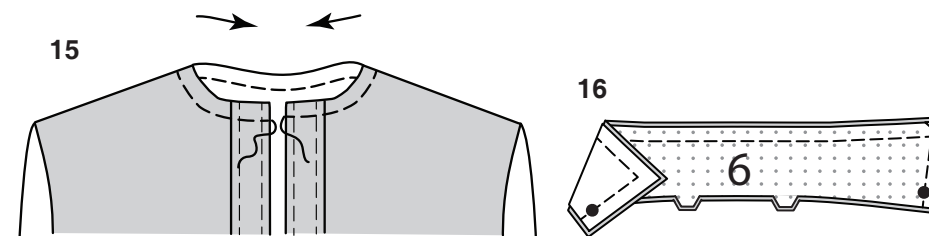


11. Press shoulder seams toward back. Pin pressed edge of yoke facing over shoulder seams. SLIPSTITCH in place. Baste neck and armhole edges together.

12. Press under 1/2" (6mm) on unnotched edge of PLACKET (2). With RIGHT sides together, pin placket to front, matching notches. Stitch. TRIM SEAM.

13. Press seam toward placket, pressing placket out. Turn placket to INSIDE along fold line, pinning pressed edge over seam, placing pins on OUTSIDE. Press. On OUTSIDE, STITCH IN THE DITCH or "groove" of seam, catching in pressed edge on INSIDE.

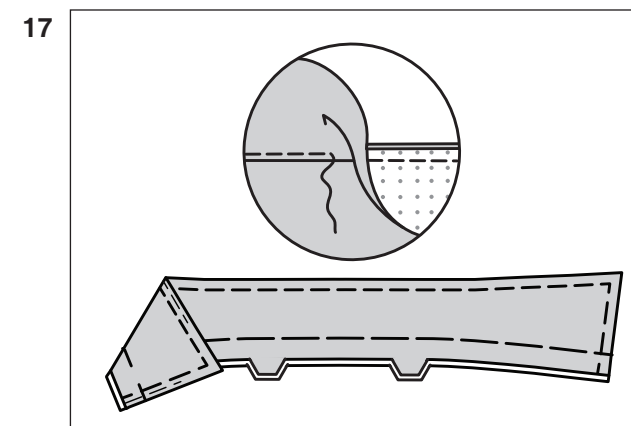
14. TOPSTITCH side edges of placket. Baste raw edges together.



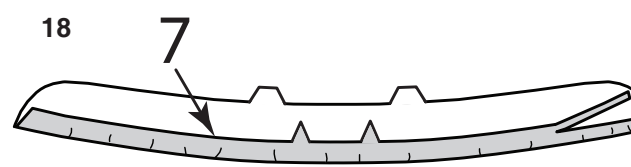
COLLAR AND BAND

15. STAYSTITCH neck edge of garment, in direction of arrows.

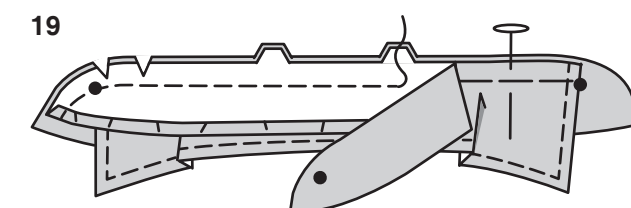
16. Stitch COLLAR (6) sections together, leaving notched edge open. TRIM SEAM.



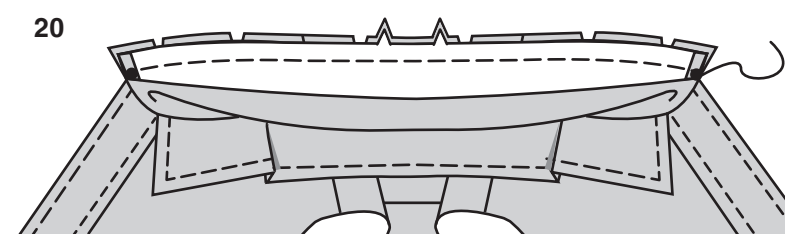
17. UNDERSTITCH collar facing as far as possible. Turn. Press. Baste raw edges together. TOPSTITCH outer edges.



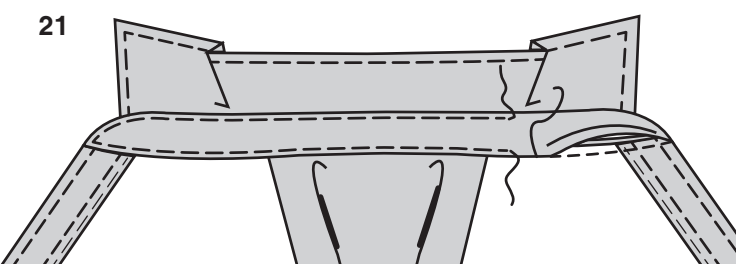
18. Turn in seam allowance on single notched edge of NECK BAND (7) section. Press, easing in fullness. Trim pressed seam allowance to 3/8" (1cm).



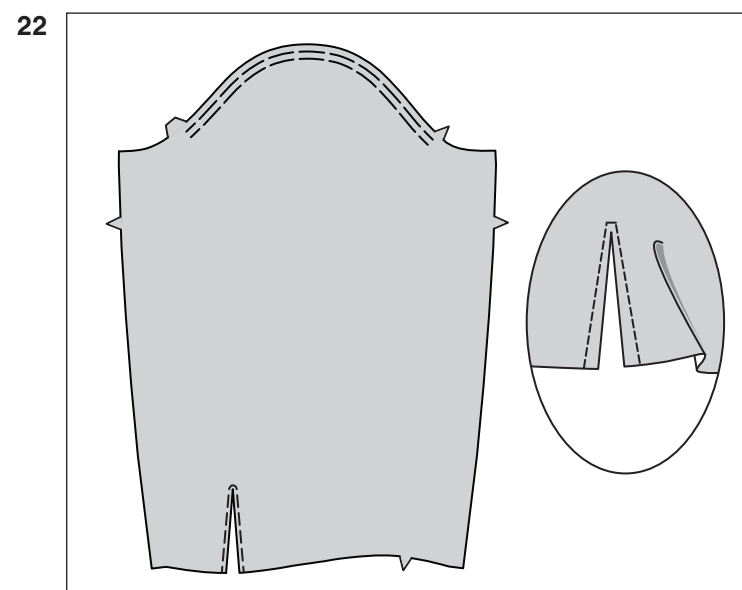
19. Pin uninterfaced side of collar to interfaced collar band between large dots. Pin uninterfaced collar band over collar; baste. Stitch, as shown, leaving neck edge open. TRIM SEAM. Turn. Press.



20. Pin collar band to neck edge, matching small dots and clipping shirt neck edge where necessary. Stitch, keeping pressed edge free. TRIM SEAM.

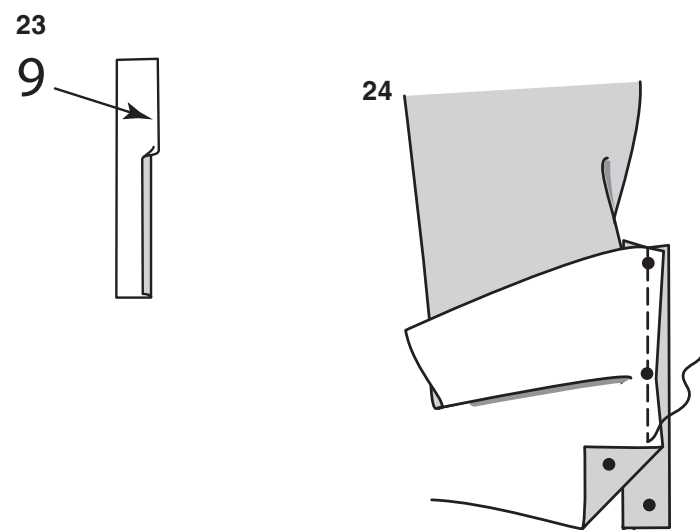


21. Press seam toward collar band. SLIPSTITCH pressed edge over seam. EDGESTITCH collar band, as shown.



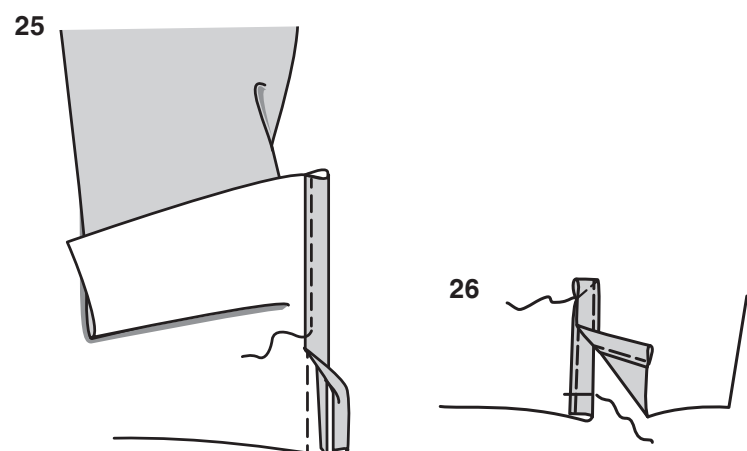
SLEEVES

22. To ease top of SLEEVE (8) between notches, stitch along seamline, using long machine stitches. Make a second row of long machine stitches 1/4" (6mm) away in seam allowance. REINFORCE lower edge of sleeve along stitching line. Slash between stitching to upper end.



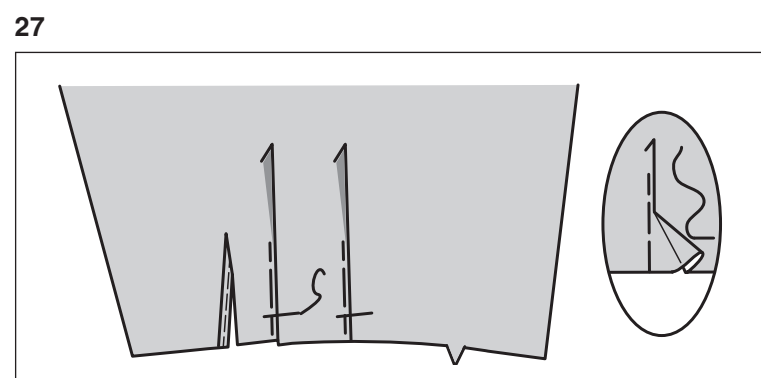
23. To form **CONTINUOUS LAP**, turn in 1/4" (6mm) seam allowance on unmarked long edge of **CONTINUOUS LAP** (9). Press.

24. With right sides together, pin continuous lap to sleeve, placing remaining 1/4" (6mm) seamline along stitching, matching small dots. Stitch.

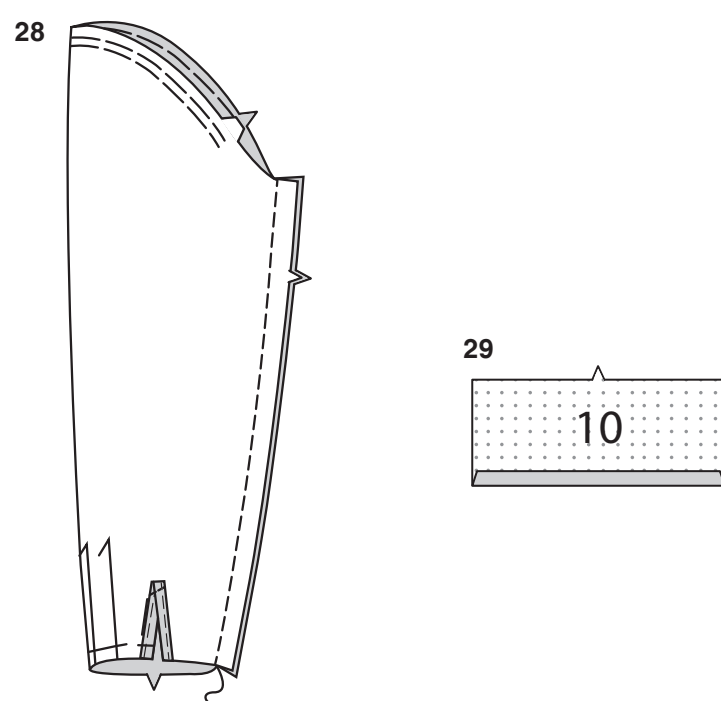


25. Press seam toward placket. Turn pressed edge of placket to inside over seam. **EDGESTITCH**. Press.

26. On **INSIDE**, bring folded edges of placket together. Stitch diagonally across upper end. Turn front edge of placket to **INSIDE** along seam. Baste lower edge.

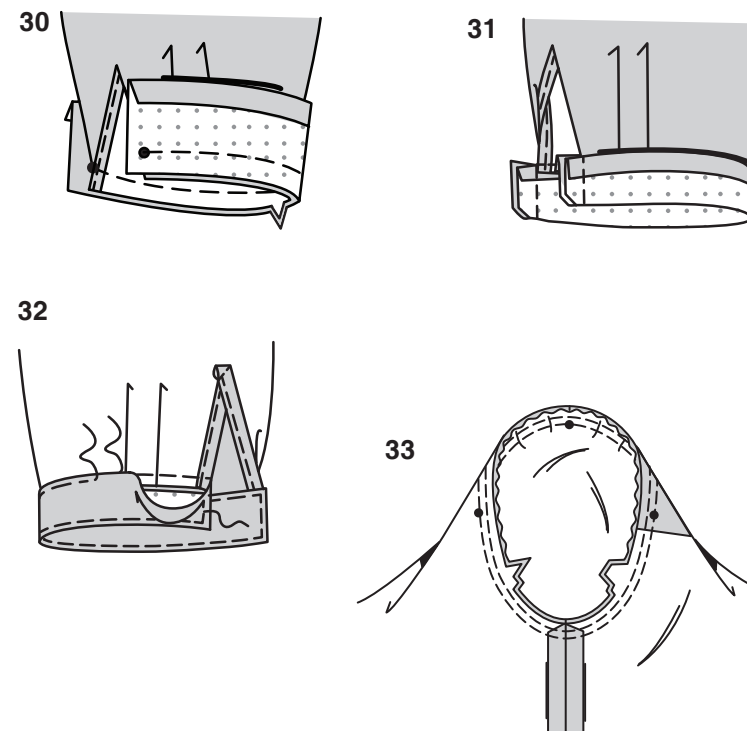


27. To make pleats in sleeve, on **OUTSIDE**, crease along solid lines. Bring creases to broken lines; baste. Baste across lower edge. Press.



28. Stitch sleeve seam.

29. Press under seam allowance on unnotched edge of **CUFF** (10) sections.



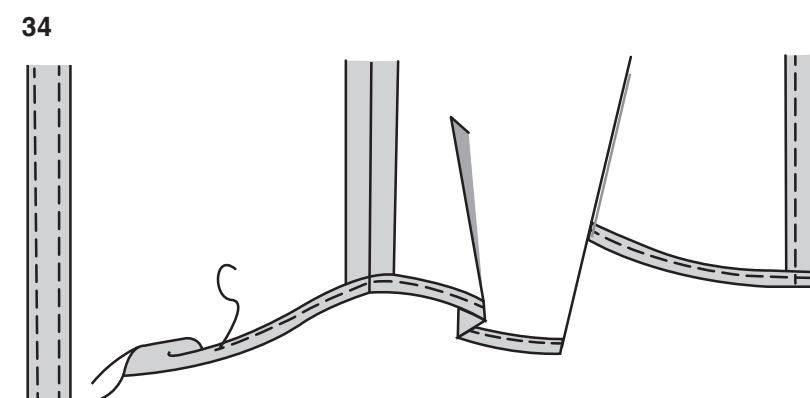
30. With **RIGHT** sides together, pin cuff to lower edge of sleeve matching notches and small dots to opening edges. Stitch.

31. Press seam toward cuff. Fold cuff in half along foldline, with **RIGHT** sides together. Stitch ends.

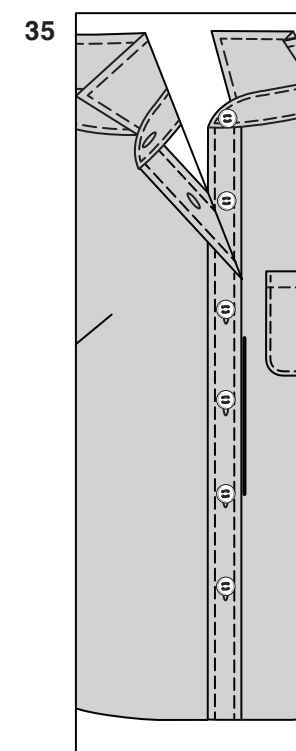
32. Turn cuff to **INSIDE**, pinning pressed edge of cuff over seam. **SLIPSTITCH** cuff in place. **EDGESTITCH** outer edges.

33. Turn sleeve **RIGHT** side out. To **SET IN SLEEVE**, hold garment **WRONG** side out with armhole toward you. With **RIGHT** sides together, pin sleeve to armhole edge with center small dot at shoulder seam, matching underarm seams, notches and remaining small dots. Pull up ease stitches to fit. To distribute fullness evenly, slide fabric along bobbin threads until there are no puckers or tucks on the seam line. Baste. Stitch. Stitch again 1/8" (3mm) from first stitching. Trim seam below notches close to stitching. Press only the seam allowance, shrinking out fullness.

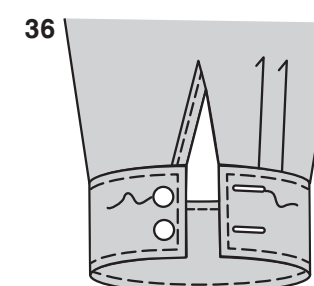
FINISHING



34. **NARROW HEM** lower edge, continuing across facing when stitching.



35. Make buttonholes in **RIGHT** front and neck band at markings. Lap **RIGHT** front over left front matching centers. Sew buttons under buttonholes.



36. Make buttonholes in cuff at markings. Sew Buttons to cuffs at markings.