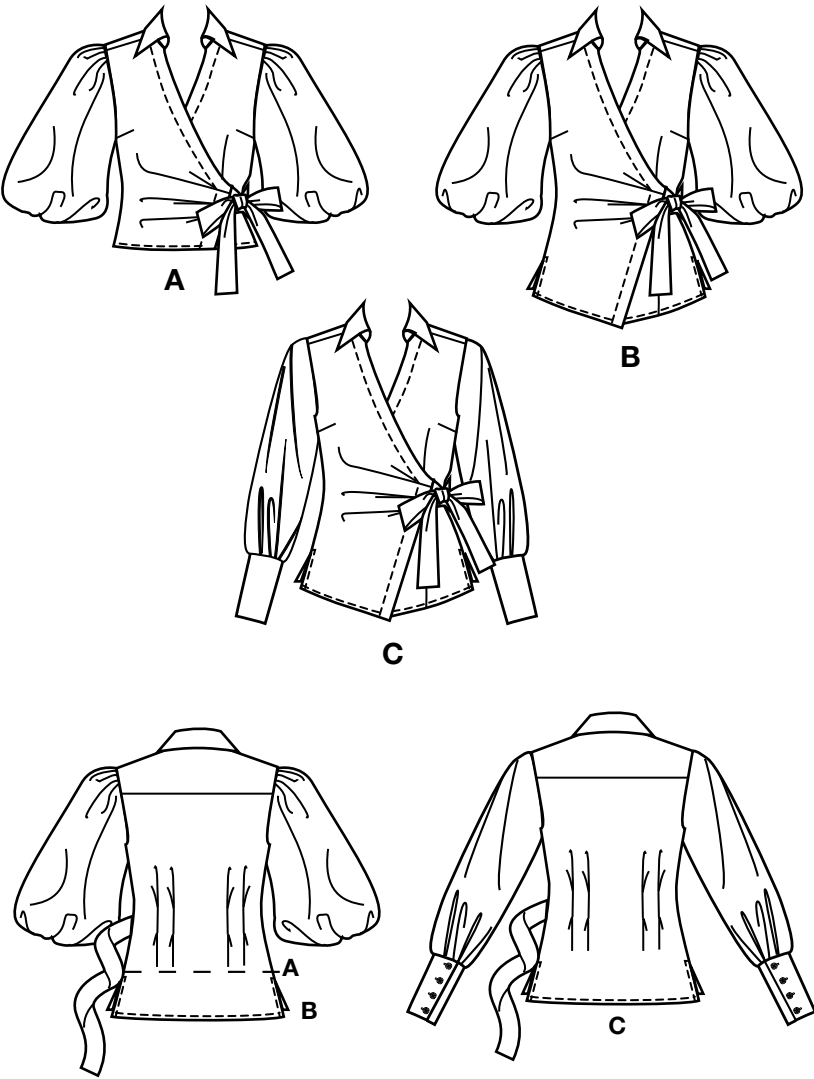
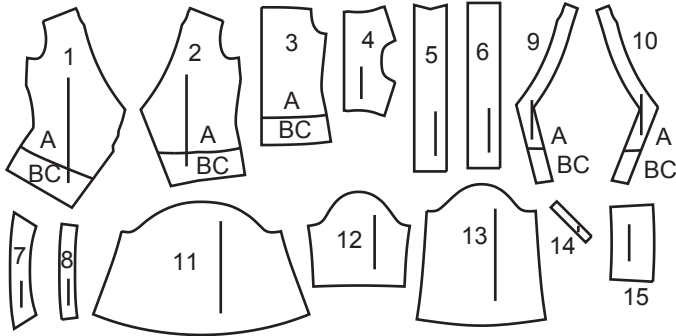


Thank you for purchasing this Simplicity pattern.
We made every effort to provide you with a high quality product.



15 PIECES



- 1 Right Front-A,B,C
- 2 Left Front-A,B,C
- 3 Back-A,B,C
- 4 Yoke Back-A,B,C
- 5 Right Tie-A,B,C
- 6 Left Tie-A,B,C
- 7 Collar-A,B,C
- 8 Collar Band-A,B,C
- 9 Right Front Facing-A,B,C
- 10 Left Front Facing-A,B,C
- 11 Sleeve-A,B
- 12 Sleeve Stay-A,B
- 13 Sleeve-C
- 14 Continuous Lap-C
- 15 Cuff-C

General Directions

The Pattern

SYMBOLS

GRAIN LINE Place on straight grain of fabric parallel to selvage

PLACE SOLID LINE on fold of fabric.

CENTER FRONT OR BACK of garment.

NOTCHES

DOTS

CUTTING LINE

LENGTHEN OR SHORTEN LINES

ADJUST IF NEEDED

Make adjustments before placing pattern on fabric.

TO LENGTHEN:
Cut pattern between lengthen or shorten lines. Spread pattern evenly, the amount needed and tape to paper.

TO SHORTEN:
At lengthen or shorten lines, make an even pleat taking up amount needed. Tape in place.

When lengthen or shorten lines are not given, make adjustments at lower edge of pattern.

Sewing

- SEW garment following **Sewing Directions**.
- PIN or machine-baste seams matching notches.
- STITCH 5/8" (1.5 cm) seams unless otherwise stated.
- PRESS seams open unless otherwise indicated clipping when necessary so seams will lie flat.
- TRIM seams to reduce bulk, as shown below.

Trim enclosed seams into layers

Trim corners

Clip inner curves

Notch outer curves

Cutting/Marking

BEFORE CUTTING:

PRESS pattern pieces with a warm dry iron. PRE-SHRINK fabric by pre-washing washables or steam-pressing non-washables.

CIRCLE your cutting layout.

PIN pattern to fabric as shown in Cutting Layouts.

- FOR DOUBLE THICKNESS: Fold fabric with RIGHT sides together.
- FOR SINGLE THICKNESS: Place fabric RIGHT side up.
- FOR PILE, SHADED OR ONE WAY DESIGN FABRICS: Use "with nap" layouts

AFTER CUTTING:

Transfer markings to WRONG side of fabric before removing pattern. Use pin and chalk method or dressmaker's tracing paper and wheel.

To Quick Mark:

- Snip edge of fabric to mark notches, ends of fold lines and center lines.
- Pin mark dots.

SPECIAL CUTTING NOTES

★ If layout shows a piece extending past fold, cut out all pieces except piece that extends.

Open out fabric to single thickness. Cut extending piece on RIGHT side of fabric in position shown.

✱ Mark small arrows along both selvages indicating direction of nap or design. Fold fabric crosswise with RIGHT sides together, and cut along fold (a).

Turn one fabric layer around so arrows on both layers go in the same direction. Place RIGHT sides together (b).

Cutting Layouts

WRONG SIDE OF FABRIC

RIGHT SIDE OF FABRIC

PATTERN PIECE WITH PRINTED SIDE UP

PATTERN PIECE WITH PRINTED SIDE DOWN

★ SEE SPECIAL CUTTING NOTES

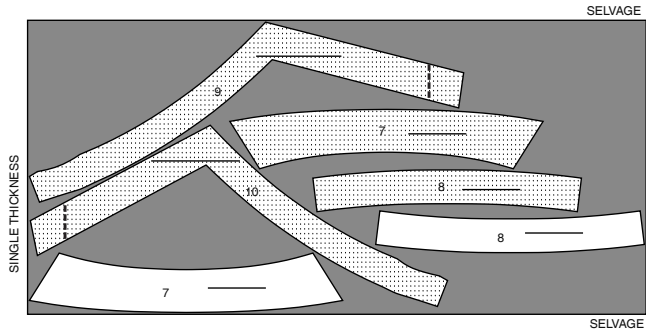
POSITION OF PATTERN PIECES MAY VARY SLIGHTLY ACCORDING TO YOUR PATTERN SIZE

INTERFACING A, B

USE PIECES 7 8 9 10

NOTE: DASHED LINE SHOWN ON PATTERN PIECES IN CUTTING LAYOUTS INDICATES CUTTING LINE FOR SHORTER LENGTH

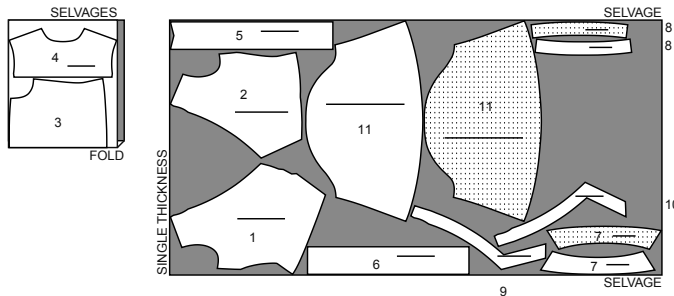
20" (51CM)
ALL SIZES



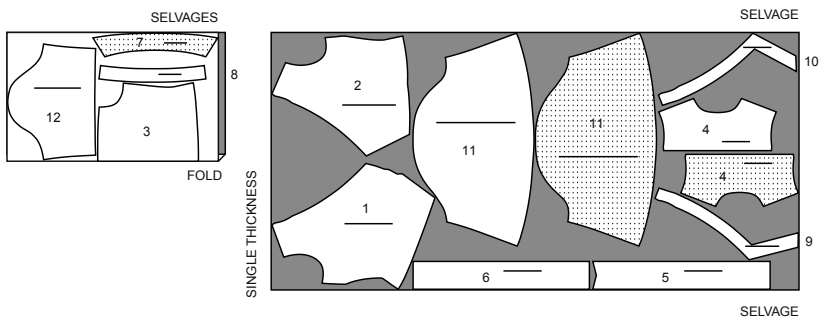
TOP A

USE PIECES 1 2 3 4 5 6 7 8 9 10 11 12

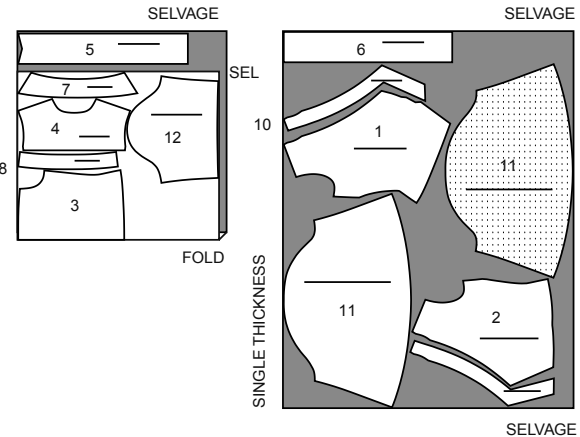
45" (115CM)
WITH NAP
SIZES 8 10 12 14
16 18 20



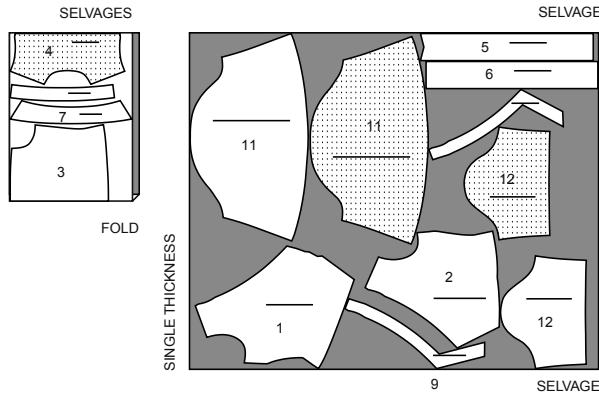
45" (115CM)
WITH NAP
SIZES 22 24 26



60" (150CM)
WITH NAP
SIZES 8 10 12 14 16



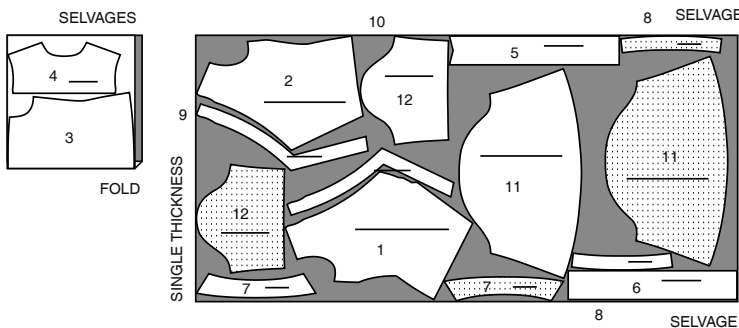
60" (150CM)
WITH NAP
SIZES 18 20 22 24 26



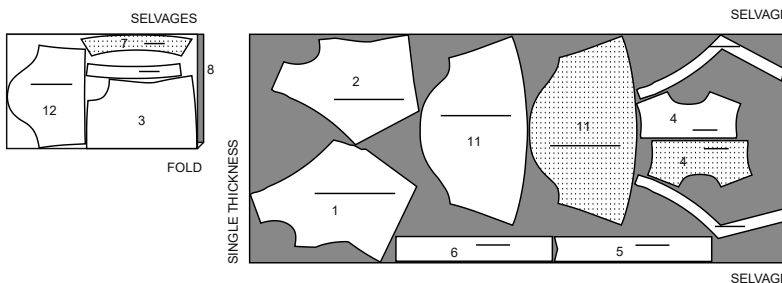
TOP B

USE PIECES 1 2 3 4 5 6 7 8 9 10 11 12

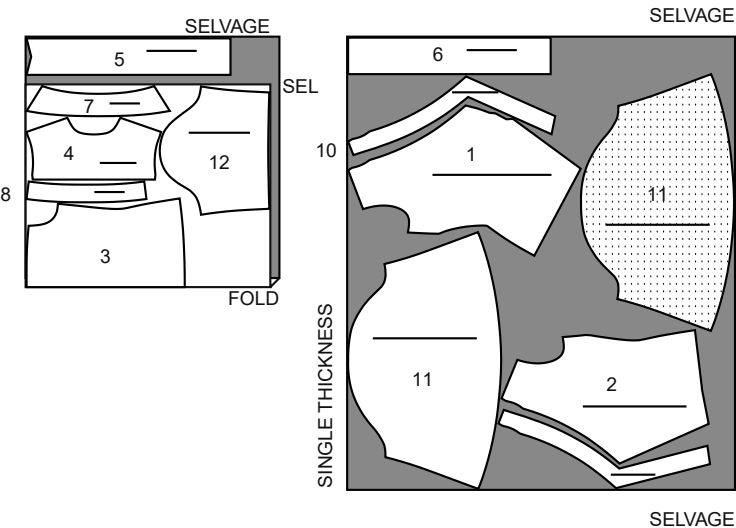
45" (115CM)
WITH NAP
SIZES 8 10 12 14 16 18 20



45" (115CM)
WITH NAP
SIZES 22 24 26



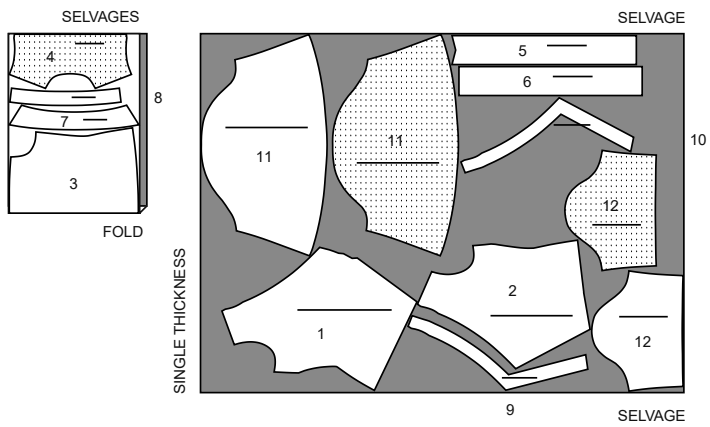
60" (150CM)
WITH NAP
SIZES 8 10 12 14 16



S3135

60" (150CM)
WITH NAP
SIZES 18 20 22 24 26

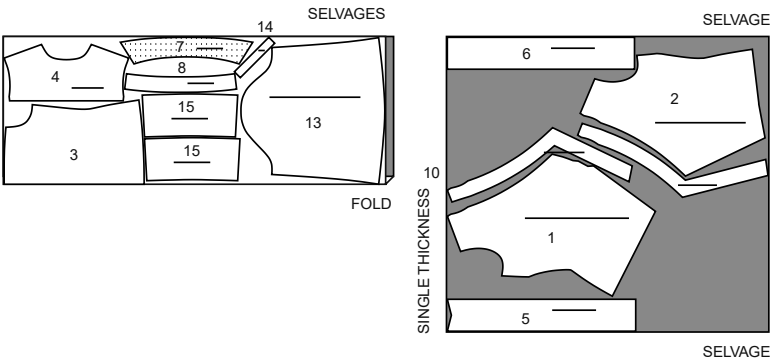
2 of 4



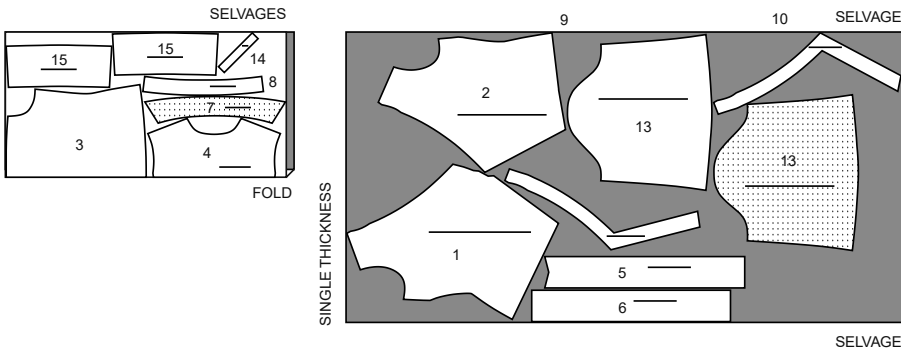
TOP C

USE PIECES 1 2 3 4 5 6 7 8 9 10 13 14 15

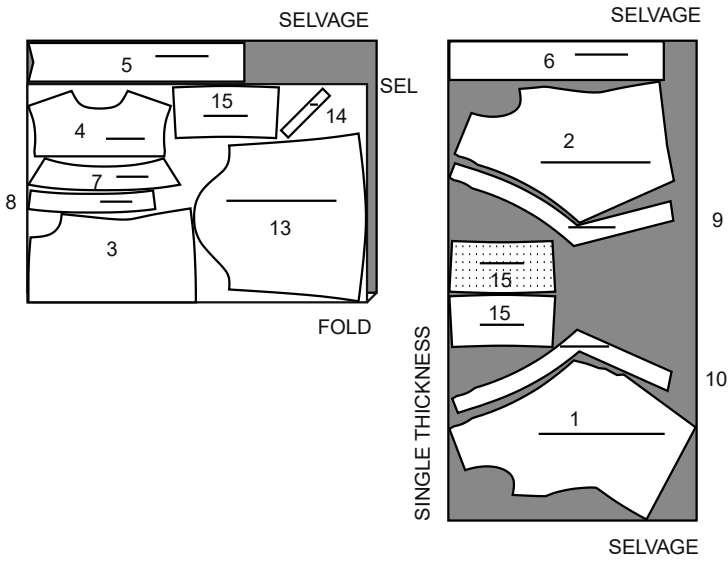
45" (115CM)
WITH NAP
SIZES 8 10 12
14 16 18 20



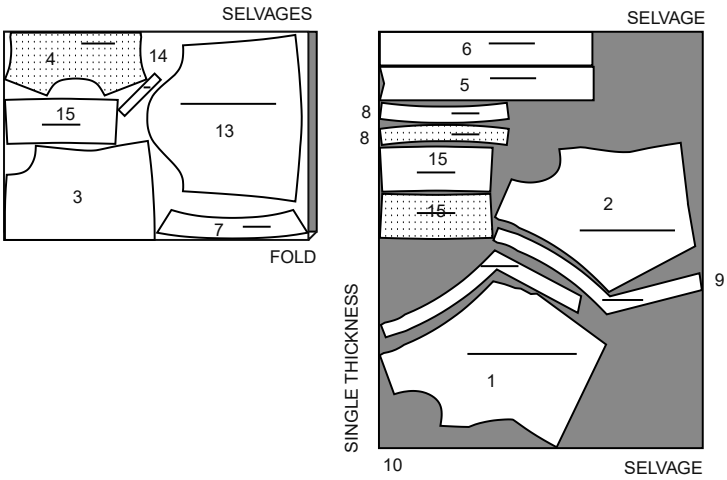
45" (115CM)
WITH NAP
SIZES 22 24 26



60" (150CM)
WITH NAP
SIZES 8 10 12 14 16



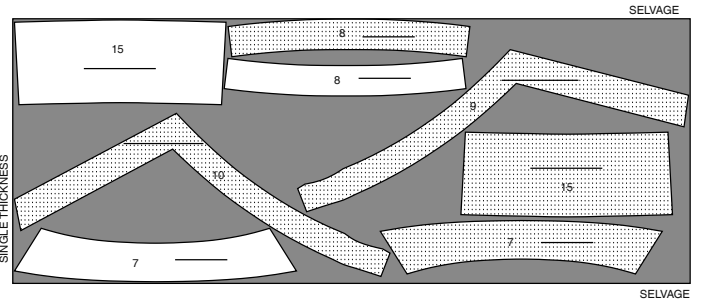
60" (150CM)
WITH NAP
SIZES 18 20 22
24 26



INTERFACING C

USE PIECES 7 8 9 10 15

20" (51CM)
ALL SIZES



SEWING TUTORIALS



Build your skills viewing short, easy-to-follow videos at
simplicity.com/sewingtutorials

Sewing Directions

Read **General Directions** on page 1 before you begin.

FABRIC KEY	RIGHT SIDE	WRONG SIDE	INTERFACING	LINING RIGHT SIDE	LINING WRONG SIDE

Sewing methods in **BOLD TYPE** have Sewing Tutorial Video available.
Scan **QR CODE** to watch videos:

DART - See **Darts: “sewing flat dart”** video.

DART - See **Darts: “sewing a double pointed dart”** video.

EDGE STITCH - See **Machine Stitches: “how to edgestitch”** video.

FINISH - See **Seams: “how to finish seam allowances”** video.

GATHER - See **Gathering: “sewing two row gathers”** video.

NARROW HEM - See **Hems: “sewing narrow hems”** video.

REINFORCE - See **Machine Stitches: “how to reinforce”** video.

SLIPSTITCH – See **Hand Stitching: “how to slip stitch”** video.

STAYSTITCH - See **Machine Stitches: “how to do stay-stitching”** video.

TOPSTITCH - See **Machine Stitches: “how to topstitch”** video.

TRIM – See **Seams: “How to Sew: Trim, Clip, and Layer Seams”** video.

UNDERSTITCH - See **Machine Stitches: “how to understitch”** video.

PATTERN PIECES WILL BE IDENTIFIED BY NUMBERS THE FIRST TIME THEY ARE USED.

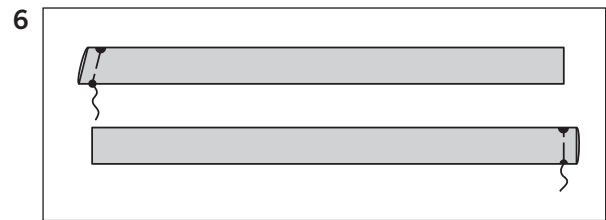
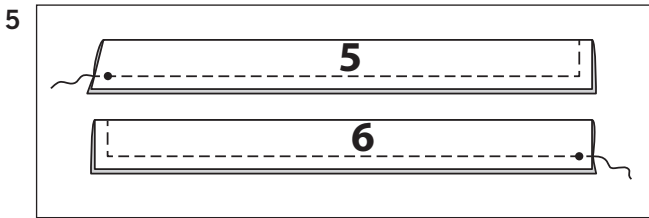
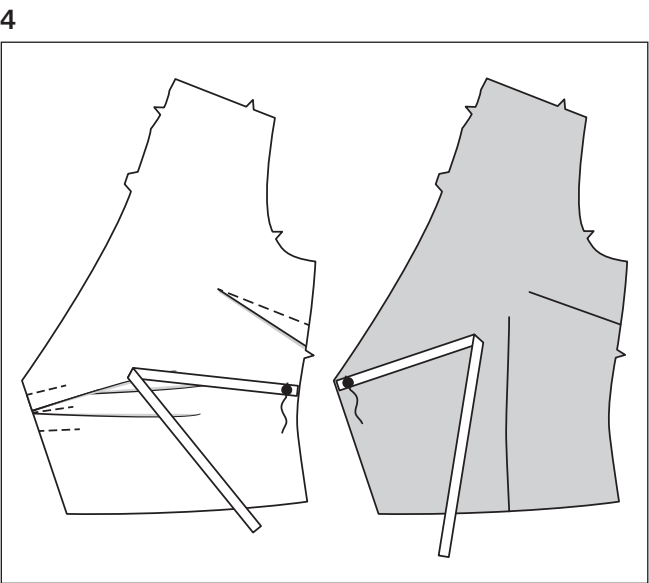
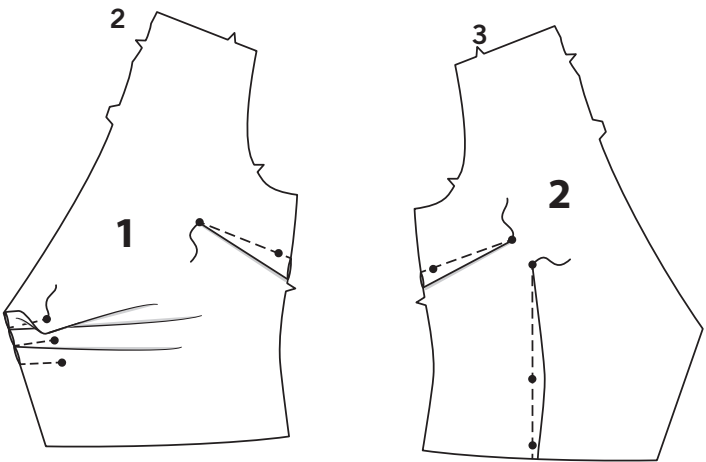
STITCH SEAMS WITH RIGHT SIDES TOGETHER UNLESS OTHERWISE STATED.

TOP A, B, C

NOTE: *The first view mentioned will be shown, unless otherwise mentioned.*

INTERFACING

1. Fuse interfacing to **WRONG** side of each matching **FABRIC** section, following manufacturer’s instructions.

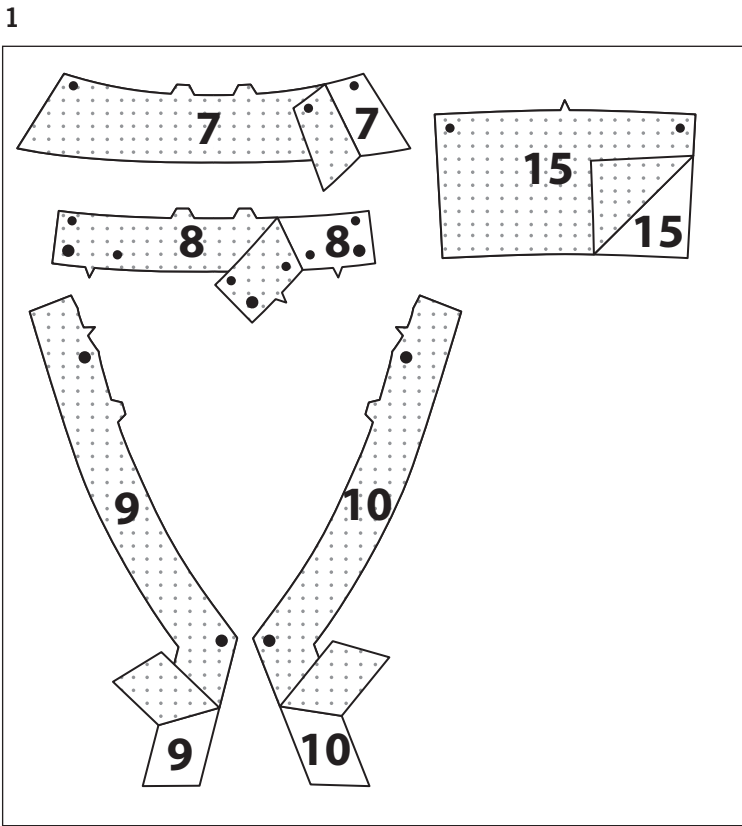


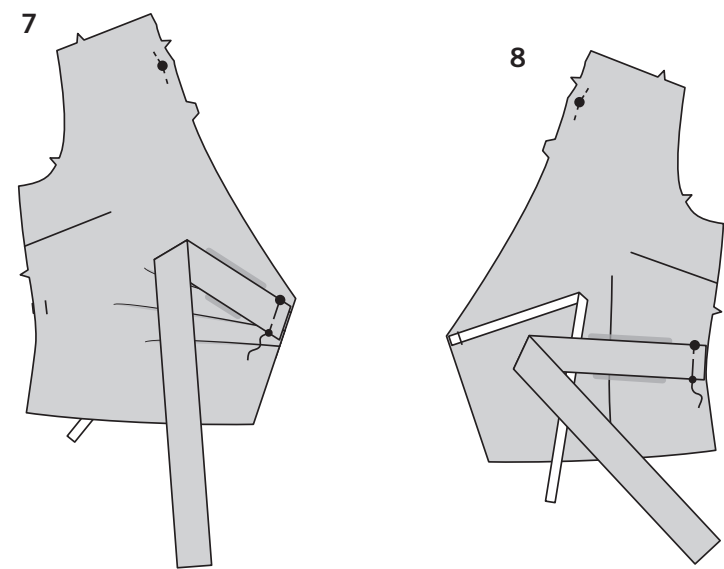
FRONT AND BACK

2. To make pleats in **RIGHT FRONT** (1), on **INSIDE**, bring stitching lines, **RIGHT** sides together, matching small dots. Stitch along stitching lines, ending at small dots. Press folds of the two lower pleats up. Press fold of upper pleat down.
To make a **FLAT DART** in right front, on **INSIDE**, fold through center of dart bringing broken lines together, matching small dots. Stitch along broken lines from wide end to point. Press dart down.
3. Stitch a **FLAT DART** in **LEFT FRONT** (2).To make a **DOUBLE POINTED DART**, on **INSIDE**, bring broken lines together, matching small dots. Stitch dart from middle to one point. Then overlapping several stitches, work from middle to other point. Press flat dart down and double pointed dart toward center.
4. For inside ties, cut two pieces of 1/2"(1.3cm) wide ribbon, each 18"(46cm) long. Pin one tie to **INSIDE** of right front, centered over large dot at side edge, having end even with raw edge. Baste. Pin remaining tie to **OUTSIDE** of left front, centered over large dot at front opening edge, having end even with raw edge. Baste.

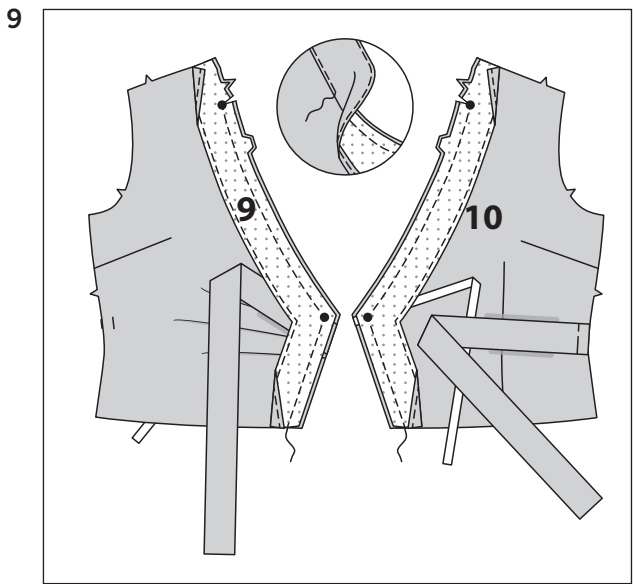
5. Fold **RIGHT TIE** (5) and **LEFT TIE** (6), in half, lengthwise, **RIGHT** sides together, matching small dots, having raw edges even. Stitch, leaving marked end open. **TRIM.**

6. Turn **RIGHT** side out. Press. Baste raw edges together.

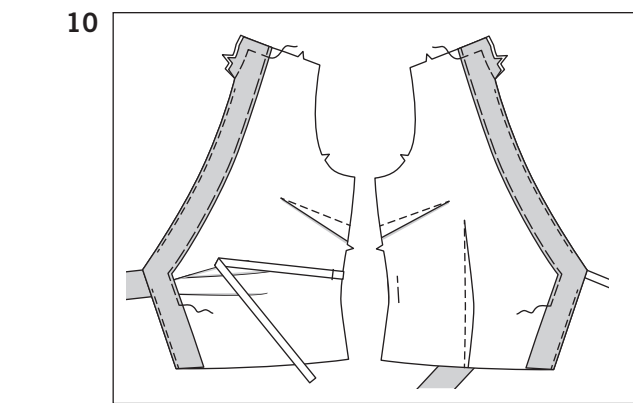




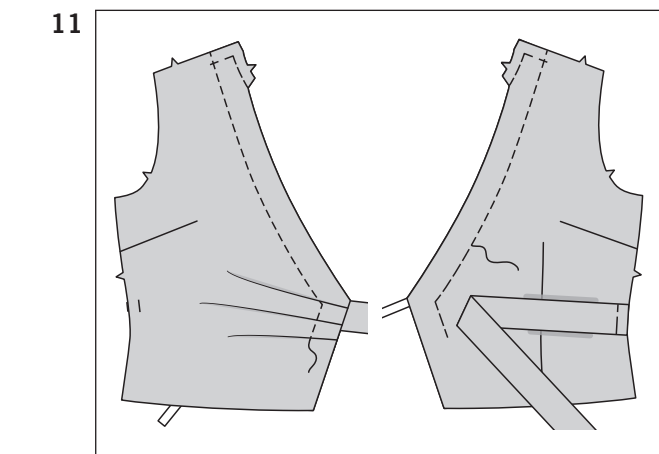
7. On OUTSIDE, pin right tie to front edge of right front matching large and small dots. Baste. To **REINFORCE** right front stitch along seamline on both sides of upper large dot, pivoting at large dot.
8. On OUTSIDE, pin left tie to side edge of left front, matching large and small dots. Baste. **REINFORCE** left front through upper large dot.



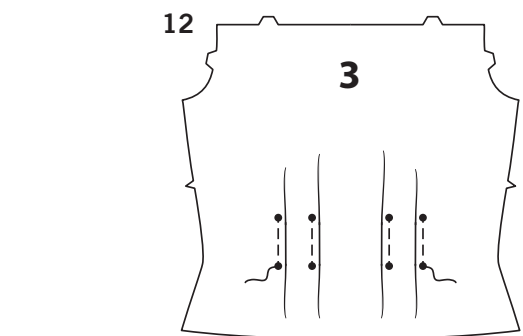
9. To **FINISH** long unnotched edge of RIGHT FRONT FACING (9) and LEFT FRONT FACING (10), stitch 1/4"(6mm) from raw edge and finish with one of the following: Pink, Zig-Zag, Overcast, or Turning in along stitching and stitching close to fold. With RIGHT sides together, pin right front facing to right front and left front facing to left front, matching notches and large dots. Stitch, leaving open above upper large dot. Clip to upper large dot. **TRIM.** To **UNDERSTITCH** facing as far as possible, open out facing and stitch facing close to seam through seam allowances.



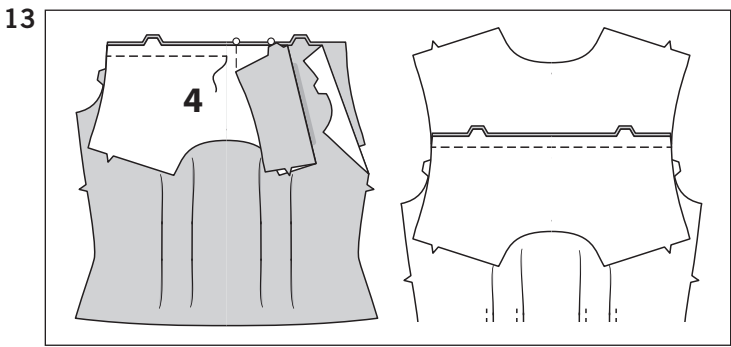
10. Turn facings to INSIDE, turning out ties. Press. Baste neck and shoulder edges together. Baste front facings close to inner edge, stopping 4"(10cm) from lower edge.



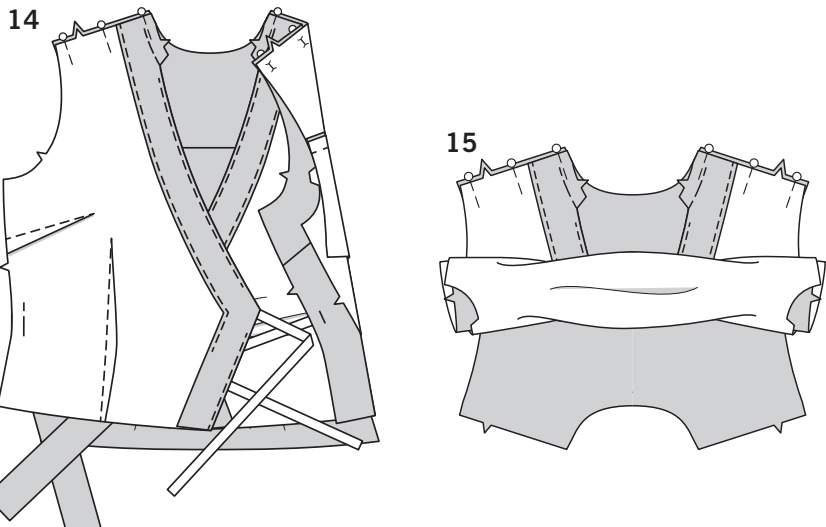
11. On OUTSIDE, **TOPSTITCH** using basting as a guide, stopping 4-1/2"(12cm) from lower edge.



12. To make pleats on BACK (3), on INSIDE, bring stitching lines, RIGHT sides together, matching small dots. Stitch along stitching lines between small dots. Press fold of pleats toward center.

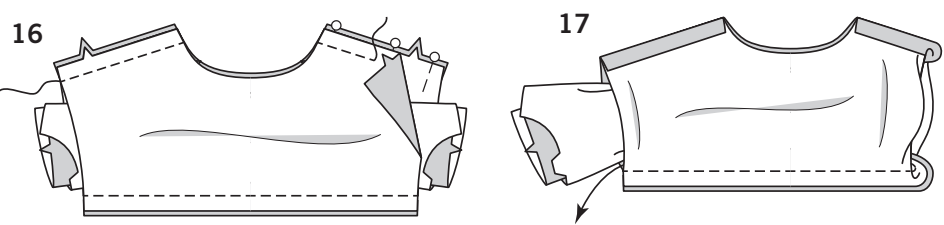


13. With back sandwiched between YOKE BACK (4) and yoke back FACING, pin double notched edges together, having RIGHT side of back and RIGHT side of yoke back together. Stitch seam through all thicknesses. Trim seam; press. Press yoke back up, leaving yoke back facing down toward back, as shown.



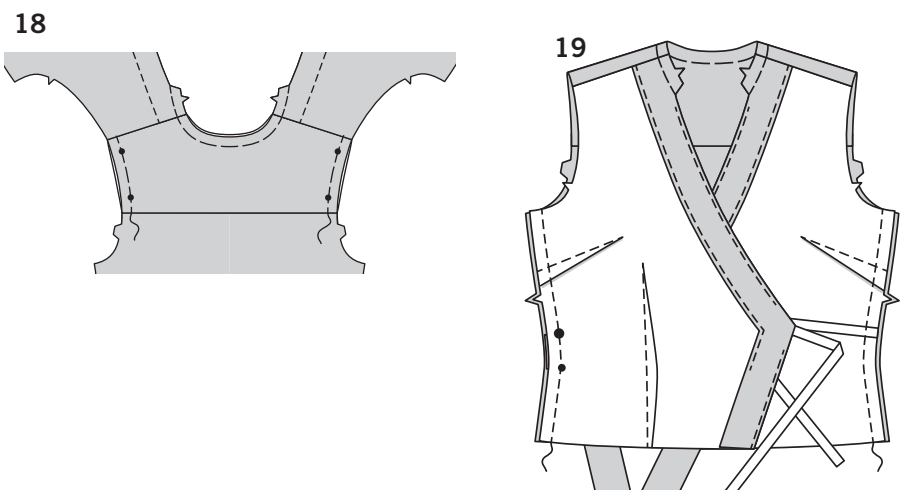
14. With RIGHT sides together, pin yoke back to fronts at shoulder edges.

15. Roll back and both front sections together toward yoke, as shown.



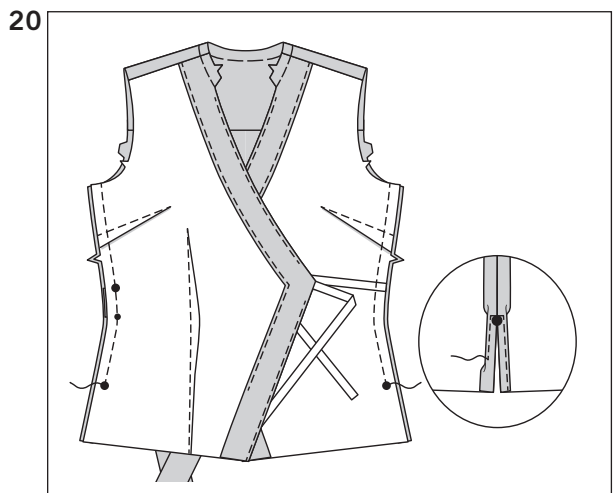
16. Bring the facing up and pin shoulder edges RIGHT sides together. (Rolled top is between yoke layers.) Stitch shoulder seams through all thicknesses, being careful not to catch in rolled top. Trim seams.

17. Reach in and pull out rolled sections through one armhole opening, turning top RIGHT side out.



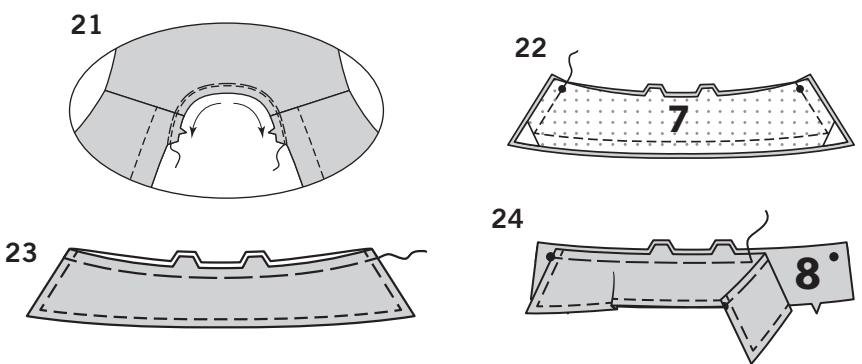
18. Press all yoke seams. Baste raw edges together.

19. **VIEW A:** Stitch front to back at sides.



20. **VIEWS B, C:** Stitch front to back at sides, ending stitching at large dot. To make a 5/8"(1.5cm) **NARROW HEM** on side opening edges, turn under 5/8" seam allowance, tapering to notching above large dot. Press. Turn in 1/4"(6mm) on raw edge. Press. Stitch close to inner pressed edge, pivoting across seam allowance 1/4"(6mm) above large dot.

COLLAR AND COLLAR BAND



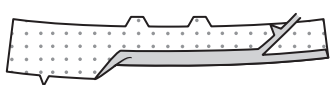
21. To **STAYSTITCH** neck edge of top, stitch 1/2"(1.3cm) from raw edge in direction of arrows.

22. Pin COLLAR (7) sections, RIGHT sides together, matching notches and centers, having raw edges even. Stitch, leaving notched edge open. **TRIM.**

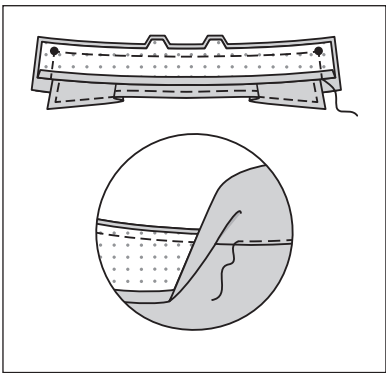
23. Turn. Press. Baste raw edges together, using 3/8"(1cm) seam. **EDGESTITCH** close to finished edges.

24. Pin collar to RIGHT side of one COLLAR BAND (8), matching centers, double notches, and small dots. Baste, using a 3/8"(1cm) seam.

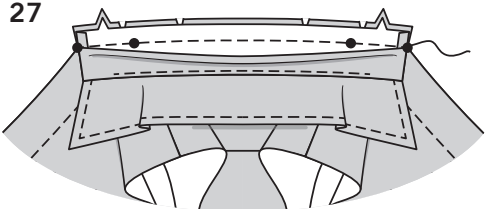
25



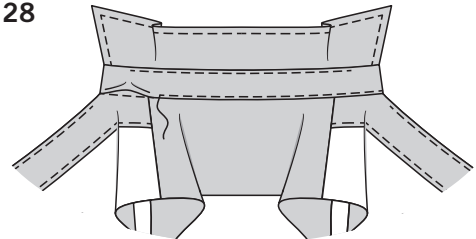
26



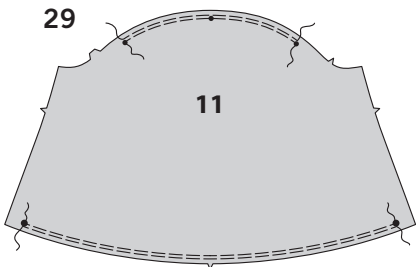
27



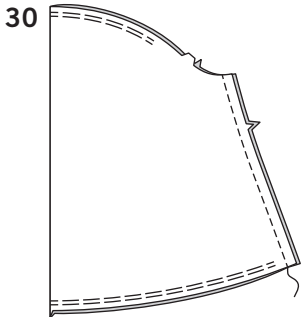
28



29



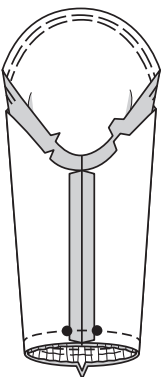
30



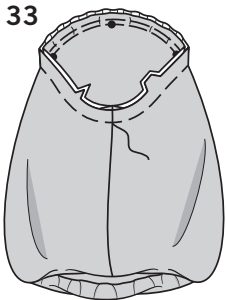
31



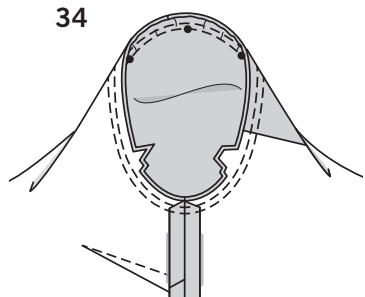
32



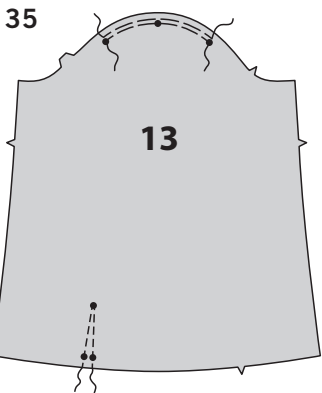
33



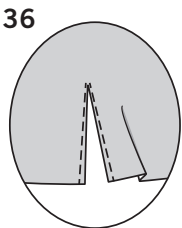
34



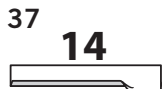
35



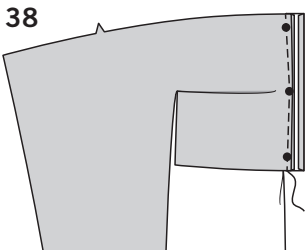
36



37



38



25. For FACING, turn in seam allowance on single notched edge on remaining collar band. Press, easing in fullness, if necessary. Trim pressed seam allowance to 3/8" (1cm).

26. With RIGHT sides together, pin collar band facing to collar band, over collar, matching centers, double notches, and small dots. Stitch front edges in a 5/8" (1.5cm) seam and double notched edge using 3/8" (1cm) seam. **UNDERSTITCH** facing as far as possible.

27. Turn collar band facing to INSIDE, turning out collar. Press. On OUTSIDE, pin collar band and collar to neck edge, matching notches, centers, large dots, placing small dots at shoulder seams, clipping neck edge where necessary. Baste. Stitch, keeping pressed edge of facing free. **TRIM.** Press seam toward collar band.

28. To **SLIPSTITCH** pressed edge of facing over seam, slide needle through a folded edge, then pick up a thread of underneath. **EDGESTITCH** collar band, if desired.

SLEEVE

VIEWS A, B

29. **GATHER** cap of SLEEVE (11) between outer small dots. To **GATHER** lower edge of sleeve between large dots, stitch along seamline and again 1/4" (6mm) away in seam allowance, using long machine stitches.

30. Stitch sleeve seam.

31. Stitch seam in SLEEVE STAY (12).

32. Pin stay to lower edge of sleeve, RIGHT sides together, matching notches and seams. Adjust gathers evenly. Baste. Stitch. **TRIM.**

33. Turn stay to INSIDE. Press. Pin stay to sleeve, WRONG sides together, matching notches, dots and seams. Adjust gathers evenly. Baste raw edges together. To ease, machine-baste cap of sleeve/stay between outer small dots along 5/8" (1.5cm) seamline and again 1/4" (6mm) away in seam allowance.

34. With RIGHT sides together, pin sleeve into armhole, matching underarm seam, notches, and small dots. Adjust ease. Baste. Stitch. Stitch again 1/4" (6mm) away in seam allowances. Trim close to second stitching between notches.

VIEW C

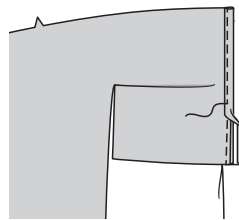
35. To ease cap of SLEEVE (13), machine-baste between outer small dots along 5/8" (1.5cm) seamline and 1/4" (6mm) away in seam allowance. To make slash opening at lower edge of sleeve, stitch along stitching lines. Pivot and take one small stitch across the point.

36. Slash between stitching, being careful not to slash through the stitch at the point.

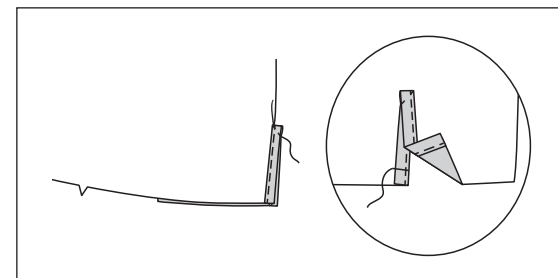
37. Press under 1/4" (6mm) on unmarked edge of CONTINUOUS LAP (14).

38. Spread slashed edges of sleeve apart so that they form a straight line. Pin RIGHT side of continuous lap to WRONG side of slashed edges, matching stitching lines and dots. Sleeve seam allowance will be 1/4" (6mm) at the ends but taper close to nothing at the center dot. Stitch along stitching line, being careful not to pucker sleeve at center dot. Press seam toward lap.

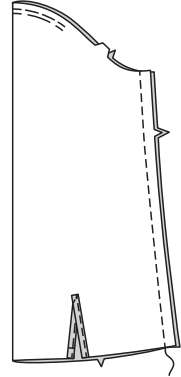
39



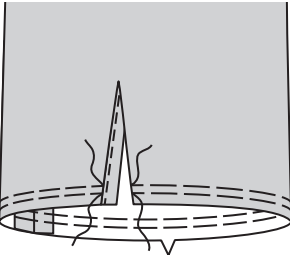
40



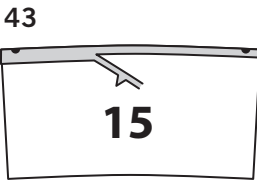
41



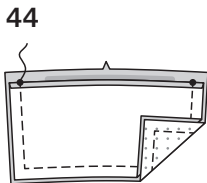
41



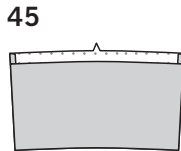
43



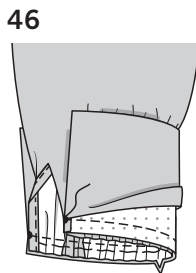
44



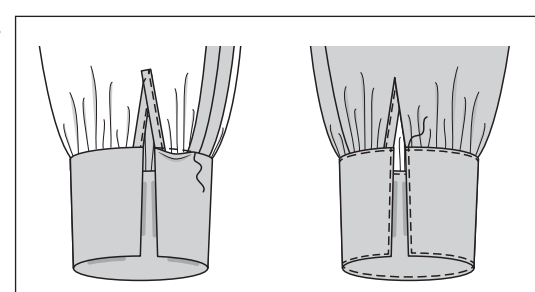
45



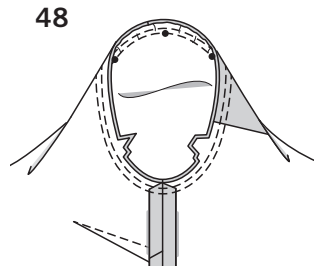
46



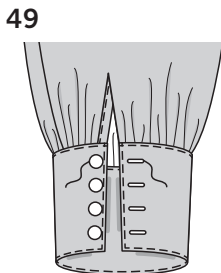
47



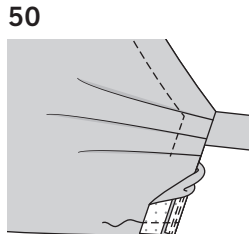
48



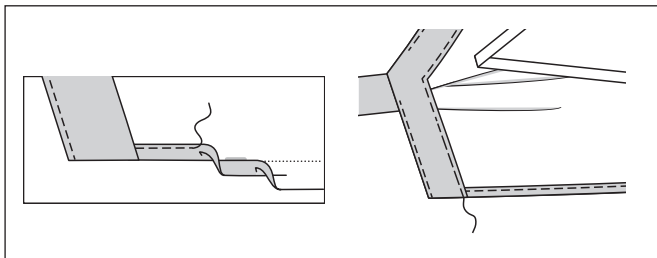
49



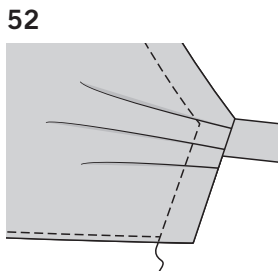
50



51



52



39. Pin pressed edge of lap to OUTSIDE, slightly over stitching. Stitch close to pressed edge.

40. To keep lap in place, stitch diagonally across upper edge of lap, as shown. Turn front edge of lap to INSIDE. Baste in place across lower edge.

41. Stitch underarm seam.

42. **GATHER** lower edge of sleeve between small dots.

43. Press under 5/8" (1.5cm) on notched edge of two CUFF (15) sections without interfacing. Trim pressed edge to 3/8" (1cm). This will be used as the facing.

44. Pin facing to interfaced cuff sections, RIGHT sides together, having raw edges even. Stitch, leaving notched edge open. **TRIM.**

45. Turn cuff RIGHT side out. Press.

46. Pin cuff to sleeve, RIGHT sides together, matching notches and opening edges. Adjust gathers evenly. Baste. Stitch, keeping pressed edge of facing free. **TRIM.** Press seam toward cuff.

47. **SLIPSTITCH** pressed edge of facing over seam. **EDGESTITCH** cuff.

48. With RIGHT sides together, pin sleeve into armhole, matching underarm seam, notches, and small dots. Adjust ease. Baste. Stitch. Stitch again 1/4" (6mm) away in seam allowances. Trim close to second stitching between notches.

FINISHING

49. Make buttonholes in cuff at markings. On OUTSIDE, sew buttons to cuff at small dots.

50. Open out front facings at lower edge and turn to OUTSIDE along seam. Stitch 5/8" (1.5cm) from lower edge. Trim facing close to stitching. Trim garment to within 5/8" (1.5cm) of inner edge of facing.

51. Turn facing to INSIDE. Press, pressing up hem. Baste remainder of facing in place close to inner edge. Make a 5/8" (1.5cm) **NARROW HEM** on lower edge between basting.

52. On OUTSIDE, stitch remainder of front facing in place, using basting as a guide, connecting with previous stitching.