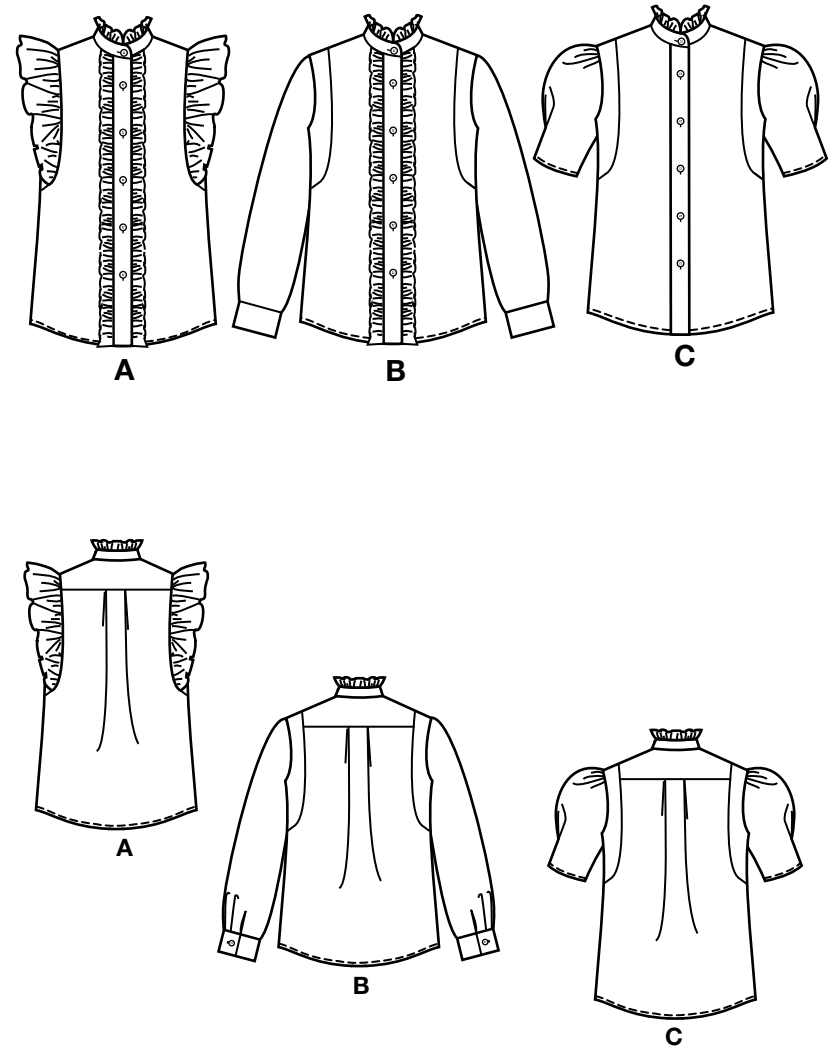


1 of 4

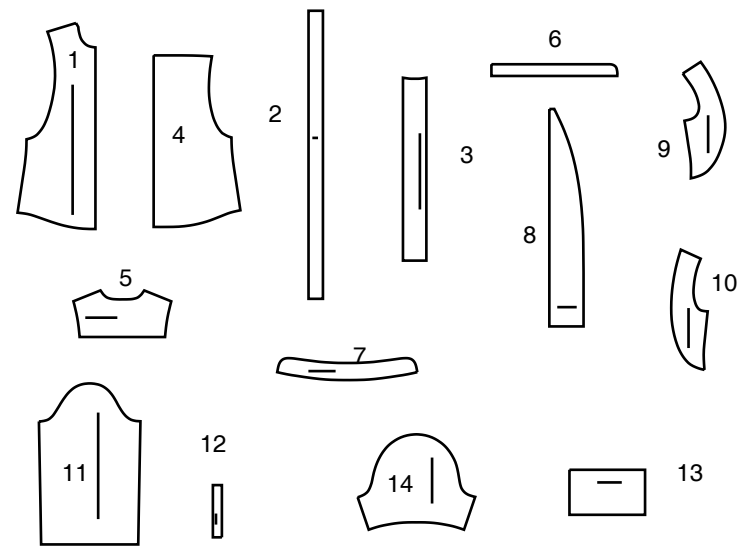
S3134

Simplicity®

Thank you for purchasing this Simplicity pattern.  
We made every effort to provide you with a high quality product.



14 PIECES



- 1 FRONT - A,B,C
- 2 FRONT RUFFLE - A,B
- 3 PLACKET - A,B,C
- 4 BACK - A,B,C
- 5 YOKE BACK - A,B,C
- 6 NECK RUFFLE - A,B,C
- 7 NECKBAND - A,B,C
- 8 FRONT AND BACK RUFFLE - A
- 9 SIDE FRONT - A,B,C
- 10 SIDE BACK - A,B,C
- 11 SLEEVE - B
- 12 CONTINUOUS LAP - B
- 13 CUFF - B
- 14 SLEEVE - C



www.simplicity.com



info@simplicity.com



1-888-588-2700

## General Directions

### The Pattern

- SYMBOLS**
- GRAIN LINE Place on straight grain of fabric parallel to selvage
  - PLACE SOLID LINE on fold of fabric.
  - CENTER FRONT OR BACK of garment.
  - NOTCHES
  - DOTS
  - CUTTING LINE
  - LENGTHEN OR SHORTEN LINES

SEAM ALLOWANCE: 5/8" (1.5cm) unless otherwise stated is included but not printed on MULTI-SIZE PATTERNS. Mark your size with colored felt tip pen. See chart on tissue for how to use MULTI-SIZE PATTERNS.

- ADJUST IF NEEDED**
- Make adjustments before placing pattern on fabric.
- TO LENGTHEN:** Cut pattern between lengthen or shorten lines. Spread pattern evenly, the amount needed and tape to paper.
- TO SHORTEN:** At lengthen or shorten lines, make an even pleat taking up amount needed. Tape in place.

When lengthen or shorten lines are not given, make adjustments at lower edge of pattern.

### Cutting/Marking

**BEFORE CUTTING:**

PRESS pattern pieces with a warm dry iron. PRE-SHRINK fabric by pre-washing washables or steam-pressing non-washables.

CIRCLE your cutting layout.

PIN pattern to fabric as shown in Cutting Layouts.

• FOR DOUBLE THICKNESS: Fold fabric with RIGHT sides together.

• FOR SINGLE THICKNESS: Place fabric RIGHT side up.

• FOR PILE, SHADED OR ONE WAY DESIGN FABRICS: Use "with nap" layouts

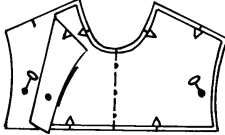
**AFTER CUTTING:**

Transfer markings to WRONG side of fabric before removing pattern. Use pin and chalk method or dressmaker's tracing paper and wheel.

**To Quick Mark:**

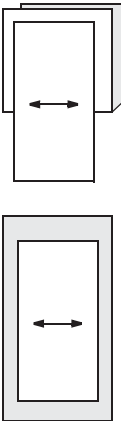
- Snip edge of fabric to mark notches, ends of fold lines and center lines.

- Pin mark dots.



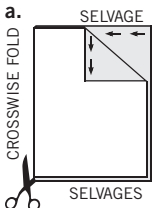
### SPECIAL CUTTING NOTES

★ If layout shows a piece extending past fold, cut out all pieces except piece that extends.

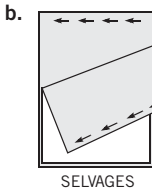


Open out fabric to single thickness. Cut extending piece on RIGHT side of fabric in position shown.

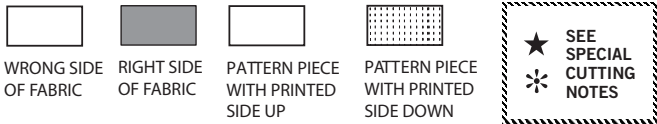
✱ Mark small arrows along both selvages indicating direction of nap or design. Fold fabric crosswise with RIGHT sides together, and cut along fold (a).



Turn one fabric layer around so arrows on both layers go in the same direction. Place RIGHT sides together (b).



## Cutting Layouts

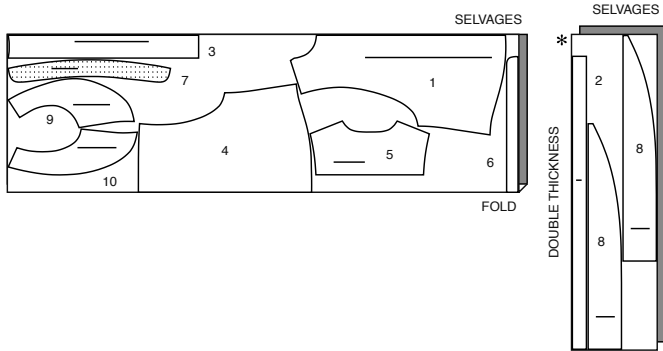


POSITION OF PATTERN PIECES MAY VARY SLIGHTLY ACCORDING TO YOUR PATTERN SIZE

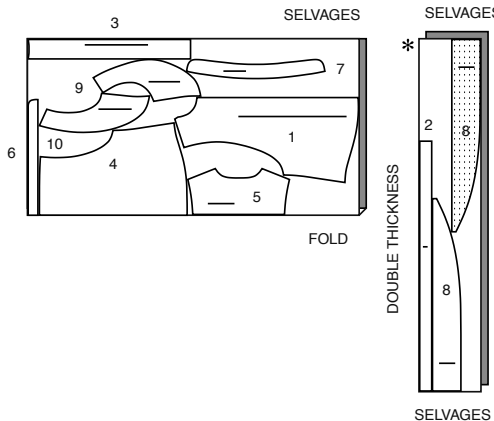
### TOP A

USE PIECES 1 2 3 4 5 6 7 8 9 10

45" (115CM) WITH NAP  
ALL SIZES

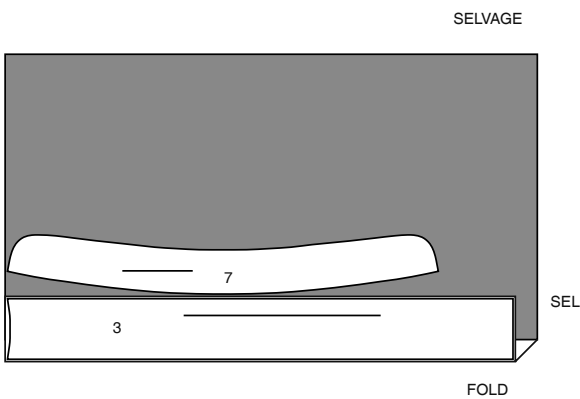


60" (150CM) WITH NAP  
ALL SIZES



### INTERFACING A,C USE PIECES 3 7

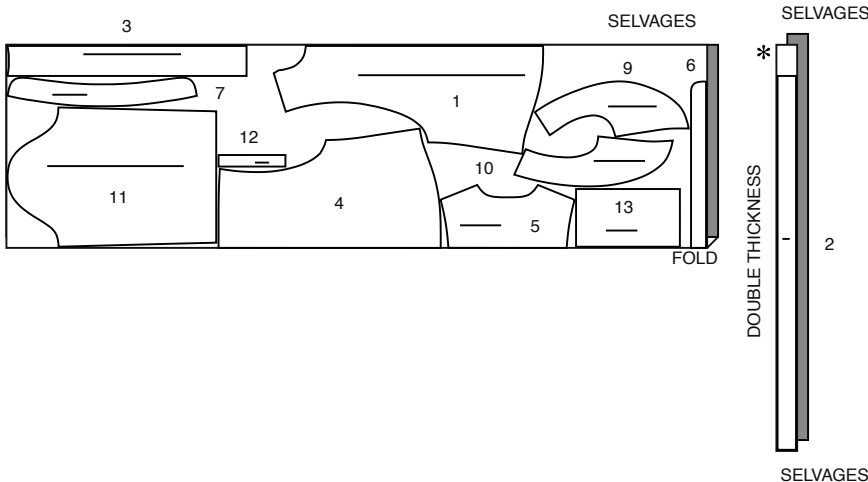
20" (51CM) ALL SIZES



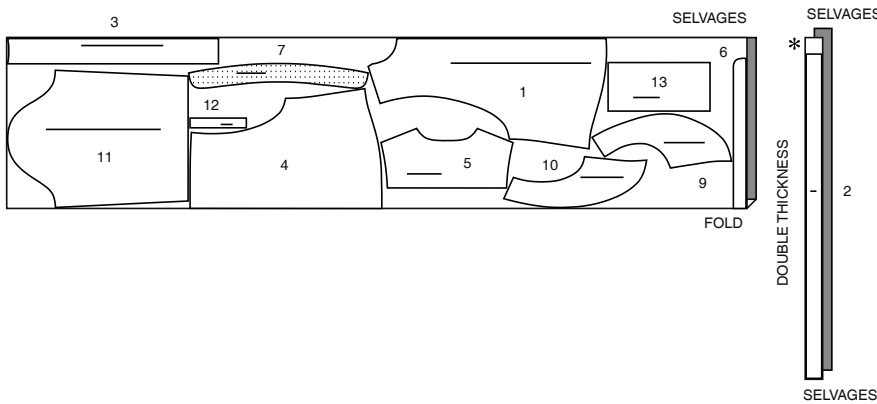
### TOP B

USE PIECES 1 2 3 4 5 6 7 9 10 11 12 13

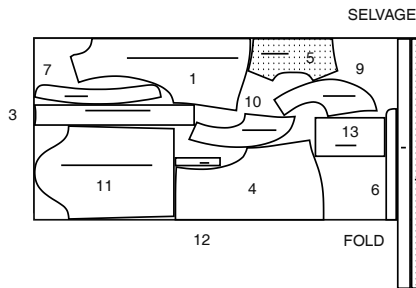
45" (115CM) WITH NAP  
SIZES 6 8 10 12 14



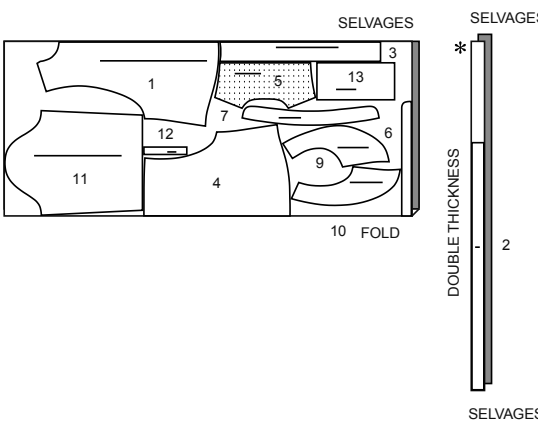
45" (115CM) WITH NAP  
SIZES 16 18 20 22 24



60" (150CM) WITH NAP  
SIZES 6 8 10 12 14

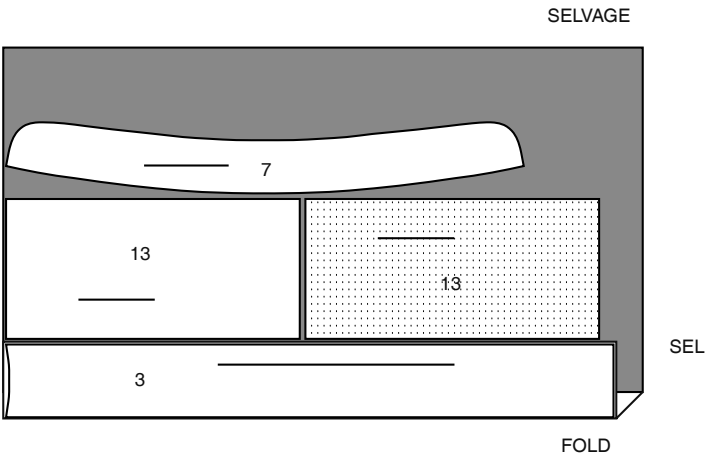


60" (150CM) WITH NAP  
SIZES 16 18 20 22 24



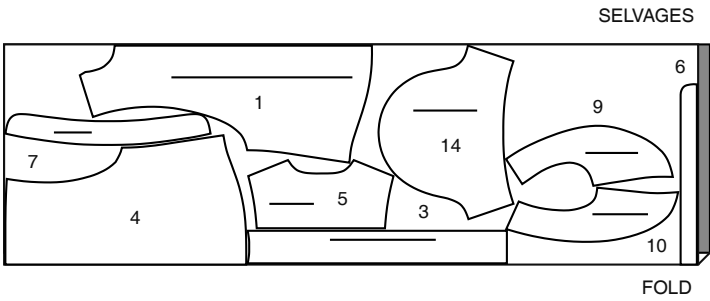
INTERFACING B  
USE PIECES 3 7 13

20" (51CM)  
ALL SIZES

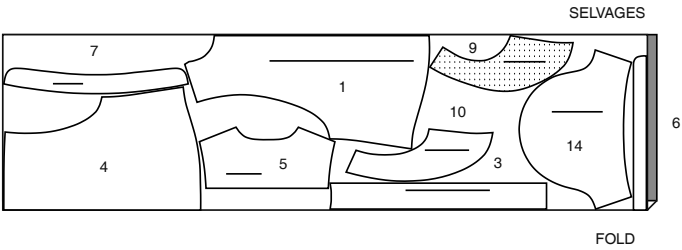


TOP C  
USE PIECES 1 3 4 5 6 7 9 10 14

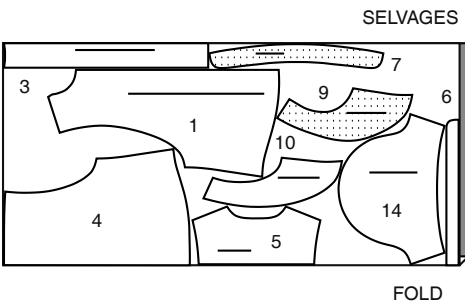
45" (115CM)  
WITH NAP  
SIZES 6 8 10 12 14



45" (115CM)  
WITH NAP  
SIZES 16 18 20 22 24



60" (150CM)  
WITH NAP  
ALL SIZES



Sewing Directions

FABRIC KEY	RIGHT SIDE	WRONG SIDE	INTERFACING	LINING	LINING

Sewing methods in **BOLD TYPE** have Sewing Tutorial Video available. Scan QR CODE to watch videos:

**SLEEVE** – See **Armholes/Sleeves**: “sewing a set in sleeve” video.

**EASE/GATHER** - See **Gathering**: “sewing two row gathers” video.

**NARROW HEM** - See **Hems**: “sewing narrow hems” video.

**EDGE STITCH** - See **Machine Stitches**: “how to edgestitch” video.

**STAYSTITCH** - See **Machine Stitches**: “how to do stay-stitching” video.

**SLIPSTITCH** - Slide needle through a folded edge, then pick up a thread of underneath fabric.

**PATTERN PIECES WILL BE IDENTIFIED BY NUMBERS THE FIRST TIME THEY ARE USED.**

**STITCH SEAMS WITH RIGHT SIDES TOGETHER UNLESS OTHERWISE STATED.**

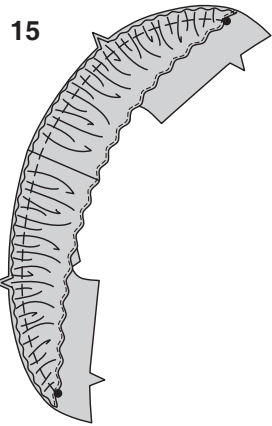
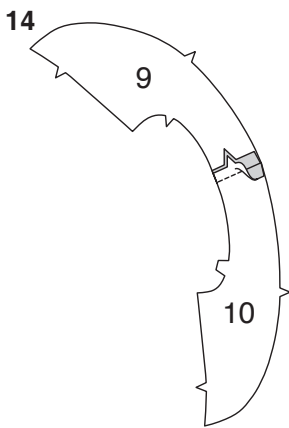
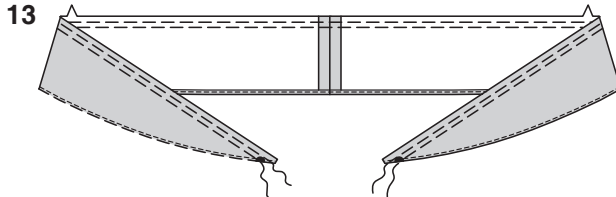
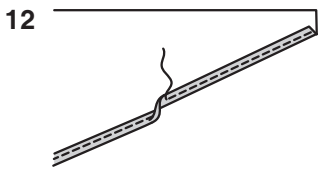
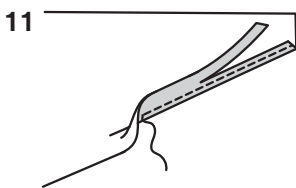
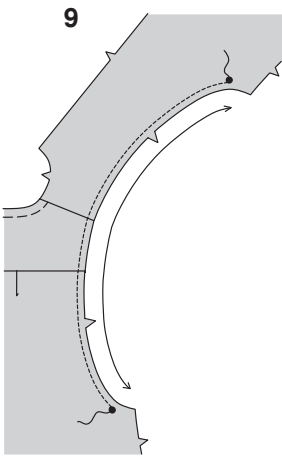
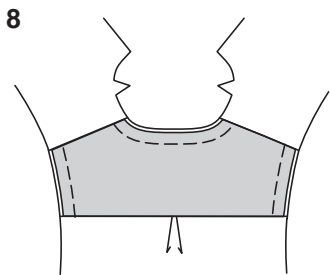
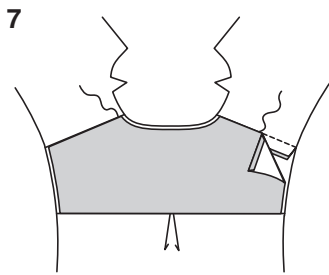
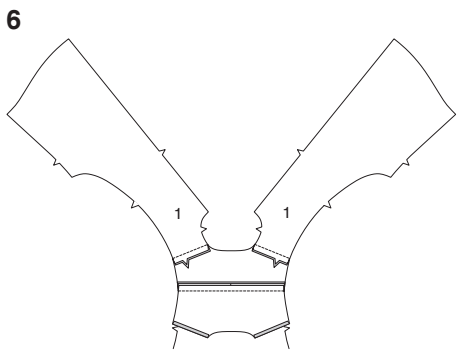
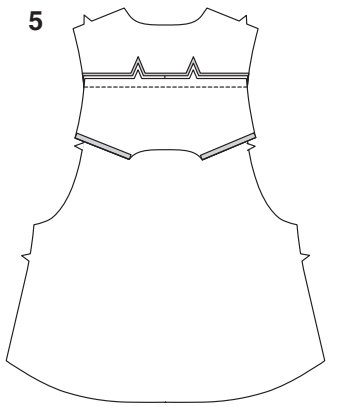
**NOTE:** Under each sub-heading, the first view will be illustrated, unless otherwise illustrated.

TOP A, B, C  
INTERFACING

1. Fuse INTERFACING to wrong side of each matching FABRIC section, following manufacturer's instructions.

BACK AND FRONT

2. To make pleats in BACK (4), on OUTSIDE, fold along solid lines. Bring folds to broken lines in direction of arrows; pin. Baste across upper edge of pleats.
3. Pin one YOKE BACK (5) section to back, RIGHT sides together, matching notches and centers; baste. (Remaining yoke back section will be used as facing.)
4. Press under 5/8" (1.5cm) on shoulder edges of yoke back FACING (5). Trim pressed edges to 3/8" (1cm).



5. Pin RIGHT side of yoke facing to wrong side of back, matching centers; stitch. Press yoke and facing upward.
6. With RIGHT sides together, pin each FRONT (1) section to yoke at shoulders, keeping yoke facing free. Stitch; press seams toward yoke.
7. Pin pressed shoulder edges of yoke facing over seams. **SLIPSTITCH** pressed edge.
8. Baste yoke neck and armhole edges together.
9. **STAYSTITCH** curved side edges of front and back, in direction of arrows leaving free below large dots.

FRONT AND BACK RUFFLE A

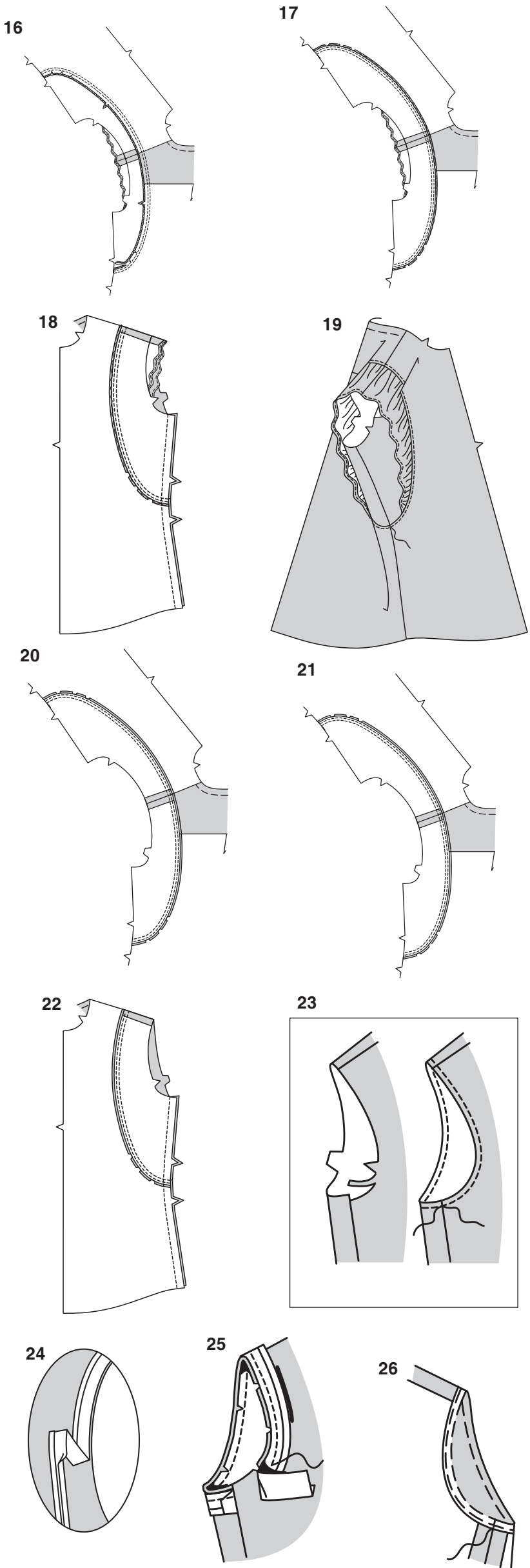
10. For each ruffle, pin two FRONT AND BACK RUFFLE (8) sections, RIGHT sides together. Stitch short, notched edge.
11. To make very narrow hem on ruffle, press under 1/4" (6mm) on long unnotched edge. Stitch close to pressed edge. Trim close to stitching.
12. Press under another 1/8" (3mm) and stitch in place.
13. **GATHER** notched edge of ruffle between large dots.

SIDE FRONT AND SIDE BACK

14. With RIGHT sides together, pin SIDE FRONT (9) to SIDE BACK (10) at shoulders; stitch.

VIEW A

15. With RIGHT sides up, pin front and back ruffle to side edge of side front and side back, matching notches, shoulder seams and large dots. Adjust gathers; baste.



**16.**Pin side front and back to curved side edges of front and back, matching notches and shoulder seams, clipping front and back where necessary. Stitch. Stitch again 1/4”(6mm) away in seam allowance. Trim close to second stitching.

**17.**Turn seams toward front and back.

**18.**Stitch front to back at sides, matching seams.

**19. EDGESTITCH** front and back at side front and side back seam.

**VIEWS B, C**

**20.**Pin side front and back to curved side edges of front and back, matching notches and shoulder seams, clipping front and back where necessary. Stitch. Stitch again 1/4”(6mm) away in seam allowance. Trim close to second stitching.

**21.**Turn seams toward front and back.

**22.**Stitch front to back at sides, matching seams.

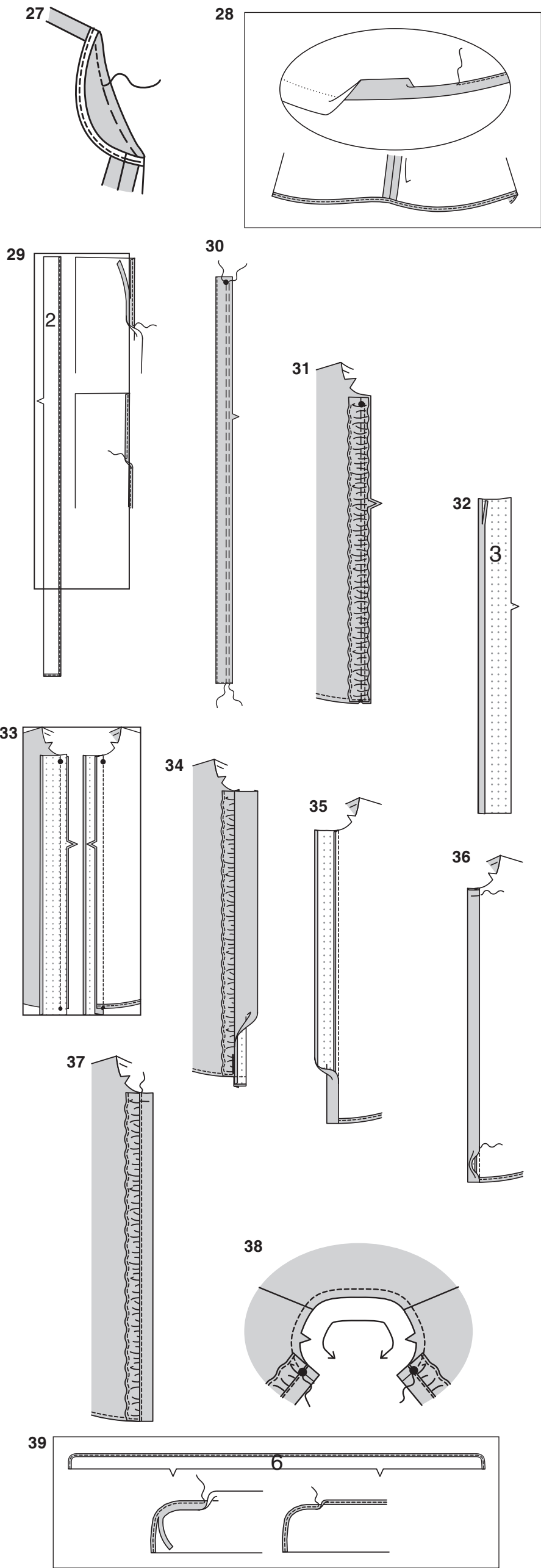
**ARMHOLE FINISH A**

**23. NOTE:** Trim away 1/4”(6mm) from armhole edges of side front and side back before stitching seams.To prevent armhole edge from stretching, stitch 1/4”(6mm) from raw edge.

**24.**Open out one folded edge of bias tape; press out crease and preshape tape to match curve of armhole by pressing lightly.

**25.**With RIGHT sides together, pin bias tape to armhole edge, having raw edges even, turning under one end and lapping over the other at side seam. Stitch in 3/8”(1cm) seam. Trim seam to a scant 1/4”(6mm).

**26.**Turn bias tape to inside along seam; press. Baste in place. **SLIPSTITCH** ends.



**27.**On outside, stitch close to basted edge.

**HEM**

**28.**Press up 5/8”(1.5cm) hem allowance on lower edge of top. To form **NARROW HEM**, tuck under raw edge to meet crease; press. Stitch hem in place.

**FRONT RUFFLE A, B**

**29.**To make very narrow hem on FRONT RUFFLE (2), press under 1/4”(6mm) on long unnotched edge. Stitch close to pressed edge. Trim close to stitching. Press under another 1/8”(3mm) and stitch in place. Hem lower edge of ruffle in same manner as long edge.

**30. GATHER** notched edge of ruffle below large dot.

**31.**Pin wrong side of ruffle to RIGHT side of front, matching notches and dots, having raw edges even. Adjust gathers; baste.

**FRONT PLACKET**

**32.**Press under 5/8”(1.5cm) on long unnotched edge of PLACKET (3). Trim pressed edge to 3/8”(1cm).

**33.**Pin placket to front, RIGHT sides together, matching notches and small dots; stitch front edges. (Lower edges of placket extend 5/8”(1.5cm). Trim seams; press toward placket, continuing to press under 5/8”(1.5cm) on placket to lower edge.

**34.**Fold lower edge of placket on foldline, RIGHT sides together. Stitch across lower edge. Trim seams.

**35.**Turn placket to inside along foldline; press.

**36. SLIPSTITCH** pressed edge of placket over seam. Press; baste across upper edge.

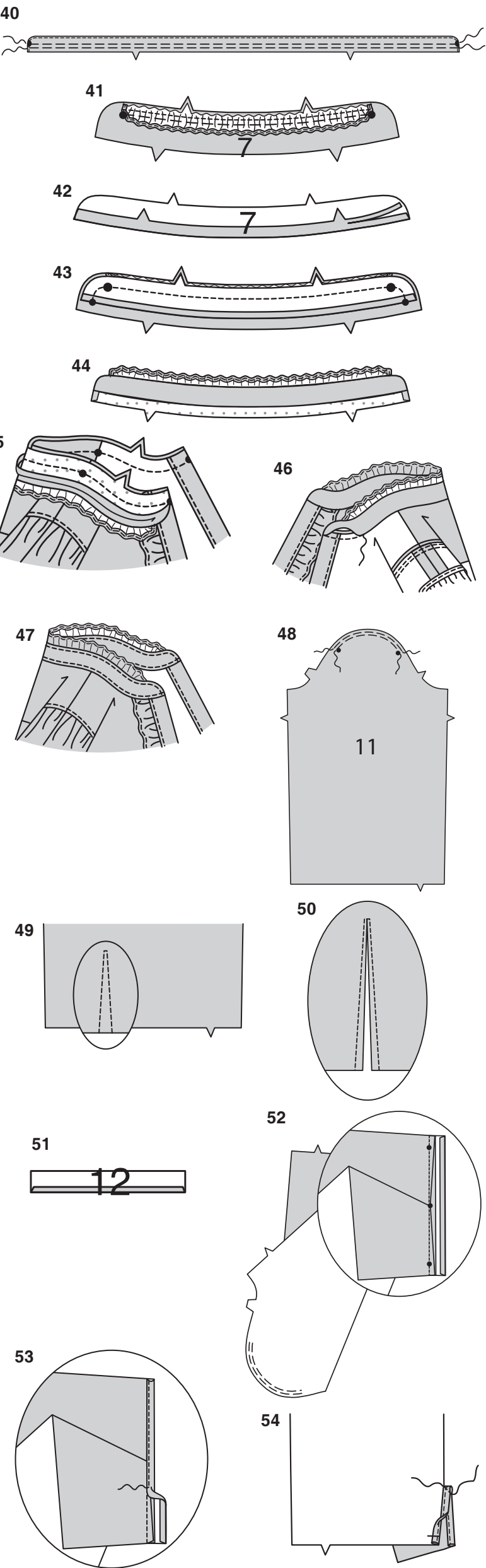
**37.**On outside, **EDGESTITCH** placket along long seamed edge.

**COLLAR AND RUFFLE**

**38. STAYSTITCH** neck edge of top between large dots in direction of arrows.

**39.**To make very narrow hem on NECK RUFFLE (6), press under 1/4”(6mm) on long unnotched edge. Stitch close to pressed edge. Trim close to stitching. Press under another 1/8”(3mm) and stitch in place.





- 40. GATHER** notched edge of ruffle between large dots.
- 41.** With **RIGHT** sides together, pin ruffle to upper edge of interfaced **NECK BAND** (7) section, matching centers and large dots. Adjust gathers; baste. (Uninterfaced neck band section will be used as facing.)
- 42.** Press under 5/8" (1.5cm) on lower edge of neck band **FACING** (7) section. Trim pressed edge to 3/8" (1cm).
- 43.** Pin facing to neck band (over neck ruffle), **RIGHT** sides together, matching center and dots. Stitch, leaving neck edge open; trim seams.
- 44.** Turn neck band **RIGHT** side out, turning ruffle up; press.
- 45.** With **RIGHT** sides together, pin neck band to neck edge, matching notches, center backs, small end dots and center dots to shoulder seams, clipping top neck edge where necessary. Stitch, keeping pressed edge free. Trim seams; press toward neck band.
- 46. SLIPSTITCH** pressed edge of neck band facing over seam.

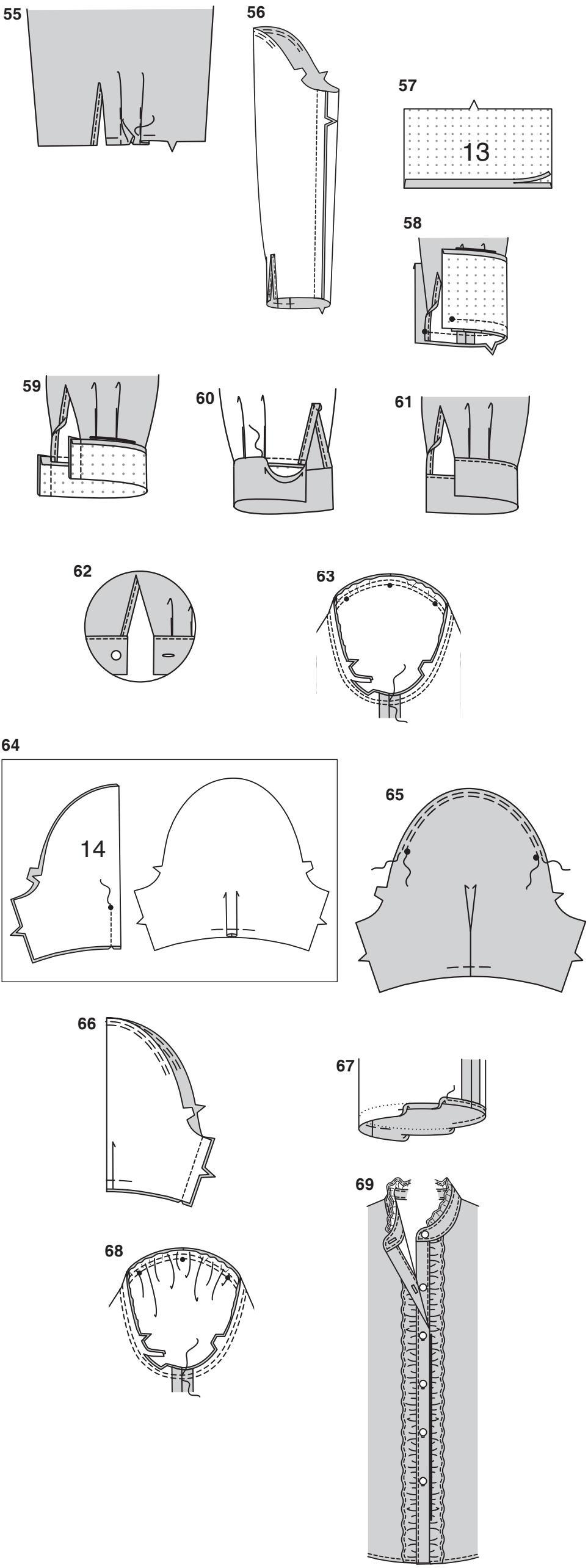
**47. EDGESTITCH** all edges of neck band.

**SLEEVE B**

**48. EASESTITCH** cap of **SLEEVE** (11) between outer dots.

- 49.** To make slash opening at lower edge of sleeve, stitch along stitching lines. Pivot and take one small stitch across the point.
- 50.** Slash between stitching, being careful not to slash through the stitch at the point.  
**TIP** - To prevent fabric from fraying, treat the point with a liquid seam sealant, such as Fray Check™.  
**TEST** on a scrap of fabric first.
- 51.** Press under 1/4" (6mm) on unmarked edge of **CONTINUOUS LAP** (12).
- 52.** Spread slashed edges of sleeve apart so that they form a straight line. Pin **RIGHT** side of continuous lap to **WRONG** side of slashed edges, matching stitching lines and small dots. Sleeve seam allowance will be 1/4" (6mm) at the ends, but taper close to nothing at the center dot. Stitch along stitching line, being careful not to pucker sleeve at center dot. Press seam toward lap.

- 53.** Pin pressed edge of lap to **OUTSIDE**, slightly over stitching. Stitch close to pressed edge.
- 54.** Turn front edge of lap to **INSIDE**; baste in place across lower edge. To keep lap in place, stitch diagonally across upper edge of lap, as shown.



- 55.** To make pleats, on **OUTSIDE**, fold along solid lines. Bring folds to broken lines in direction of arrows; pin. Baste across lower edge; press.
- 56.** Stitch sleeve seam.
- 57.** Press under 5/8" (1.5cm) on long unnotched edge of **CUFF** (13). Trim pressed seam allowance to 3/8" (1cm).
- 58.** Pin cuff to sleeve, placing small dots at opening edges; baste. Stitch; trim seam. Press seam toward cuff.
- 59.** With **RIGHT** sides together, fold cuff along foldline. Stitch ends; trim seam.
- 60.** Turn **RIGHT** side out; press. **SLIPSTITCH** pressed edge over seam.
- 61. EDGESTITCH** cuff along seamed edge.
- 62.** Make buttonhole in cuff at marking. Sew button to cuff at marking.
- 63. SLEEVE-** With **RIGHT** sides together, pin sleeve into armhole with center small dot at shoulder seam, matching underarm seams, notches and remaining small dots. Adjust ease; baste. Stitch; Stitch again 1/4" (6mm) away in seam allowance. Trim close to second stitching. Turn seams toward sleeve.

**SLEEVE C**

- 64.** To make pleat in **SLEEVE** (14), bring broken lines, **RIGHT** sides together, matching dots. Stitch along broken lines, from lower edge to dots. Press pleat flat, bringing stitching to center. Baste across raw edge.
- 65. GATHER** cap of sleeve between outer dots.

- 66.** Stitch underarm seam.
- 67.** Press up 5/8" (1.5cm) hem allowance on lower edge of sleeve. To form **NARROW HEM**, tuck under raw edge to meet crease; press. Stitch hem in place.
- 68. SLEEVE-** With **RIGHT** sides together, pin sleeve into armhole with center small dot at shoulder seam, matching underarm seams, notches and remaining small dots. Adjust gathers; baste. Stitch; Stitch again 1/4" (6mm) away in seam allowance. Trim close to second stitching. Turn seams toward sleeve.

**BUTTONHOLES AND BUTTONS**

- 69.** Make buttonholes in right front placket at markings. Lap right front placket over left, matching centers. Mark and sew buttons under buttonholes. Make buttonhole in neck band at marking. Sew button to neck band at small dot.