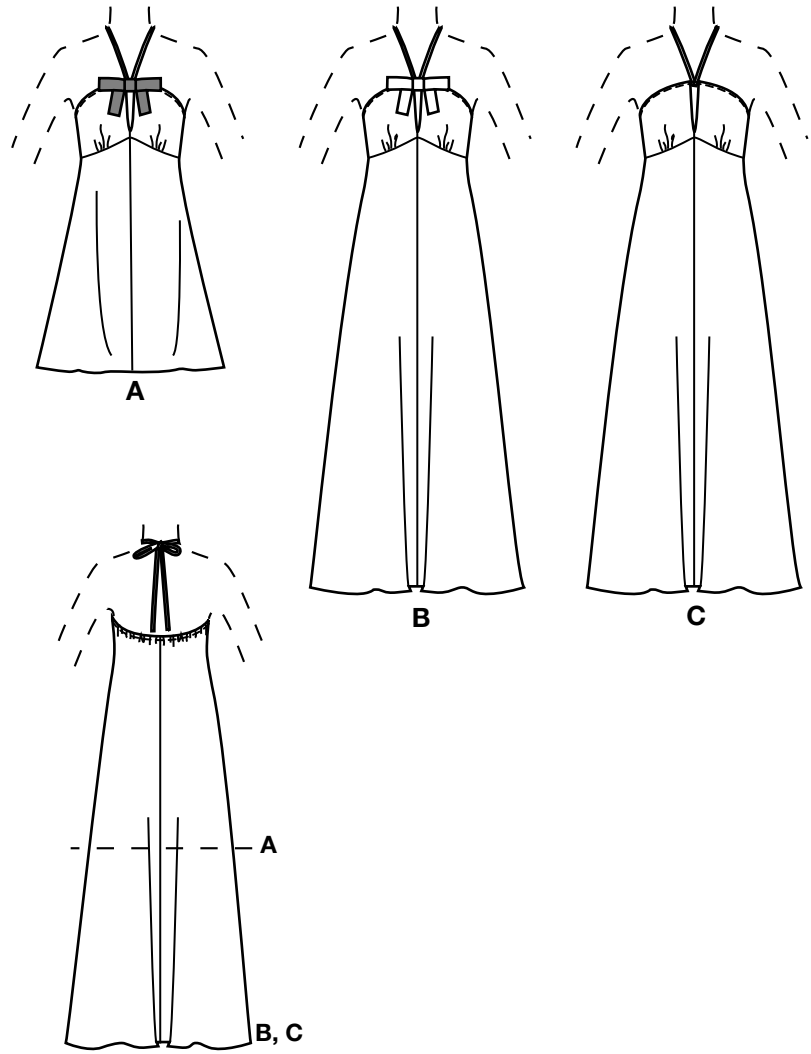
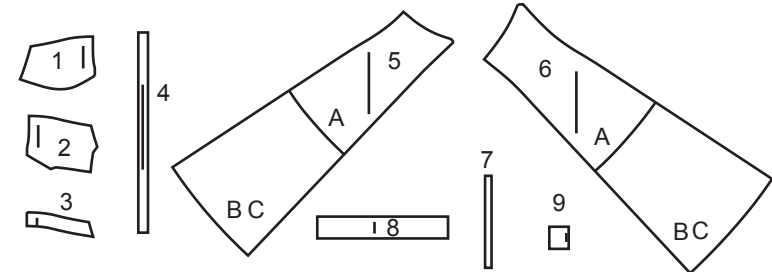


Thank you for purchasing this Simplicity pattern.
We made every effort to provide you with a high quality product.



9 PIECES



- 1 Bodice Front-A,B,C
2 Bodice Front Lining-A,B,C
3 Front Interfacing-A,B,C
4 Strap-A,B,C
5 Front-A,B,C
6 Back-A,B,C
7 Guide for Elastic-A,B,C
8 Bow-A,B
9 Knot-A,B



www.simplicity.com



info@simplicity.com



1-888-588-2700

General Directions

The Pattern

- SYMBOLS**
- GRAIN LINE Place on straight grain of fabric parallel to selvage
 - PLACE SOLID LINE on fold of fabric.
 - CENTER FRONT OR BACK of garment.
 - NOTCHES
 - DOTS
 - CUTTING LINE
 - LENGTHEN OR SHORTEN LINES

SEAM ALLOWANCE: 5/8" (1.5cm) unless otherwise stated is included but not printed on MULTI-SIZE PATTERNS. Mark your size with colored felt tip pen. See chart on tissue for how to use MULTI-SIZE PATTERNS.

ADJUST IF NEEDED

Make adjustments before placing pattern on fabric.

TO LENGTHEN:
Cut pattern between lengthen or shorten lines. Spread pattern evenly, the amount needed and tape to paper.

TO SHORTEN:
At lengthen or shorten lines, make an even pleat taking up amount needed. Tape in place.

When lengthen or shorten lines are not given, make adjustments at lower edge of pattern.

Cutting/Marking

BEFORE CUTTING:

PRESS pattern pieces with a warm dry iron. PRE-SHRINK fabric by pre-washing washables or steam-pressing non-washables.

CIRCLE your cutting layout.

PIN pattern to fabric as shown in Cutting Layouts.

• FOR DOUBLE THICKNESS: Fold fabric with RIGHT sides together.

• FOR SINGLE THICKNESS: Place fabric RIGHT side up.

• FOR PILE, SHADED OR ONE WAY DESIGN FABRICS: Use "with nap" layouts

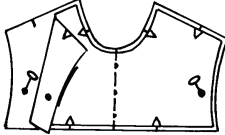
AFTER CUTTING:

Transfer markings to WRONG side of fabric before removing pattern. Use pin and chalk method or dressmaker's tracing paper and wheel.

To Quick Mark:

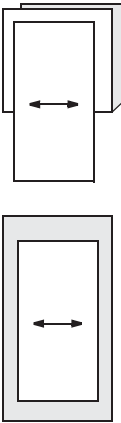
- Snip edge of fabric to mark notches, ends of fold lines and center lines.

- Pin mark dots.

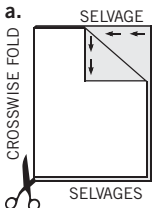


SPECIAL CUTTING NOTES

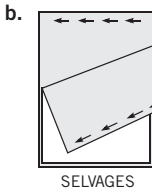
★ If layout shows a piece extending past fold, cut out all pieces except piece that extends.



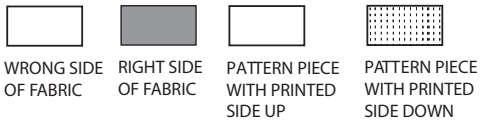
✱ Mark small arrows along both selvages indicating direction of nap or design. Fold fabric crosswise with RIGHT sides together, and cut along fold (a).



Turn one fabric layer around so arrows on both layers go in the same direction. Place RIGHT sides together (b).



Cutting Layouts

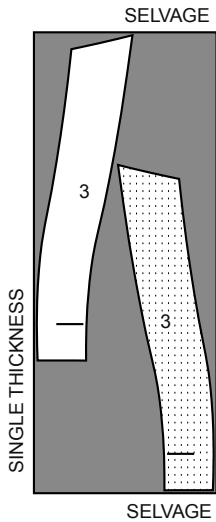


POSITION OF PATTERN PIECES MAY VARY SLIGHTLY ACCORDING TO YOUR PATTERN SIZE

INTERFACING A B C

USE PIECES 3

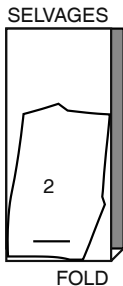
20" (51CM)
WITHOUT NAP
ALL SIZES



LINING A B C

USE PIECE 2

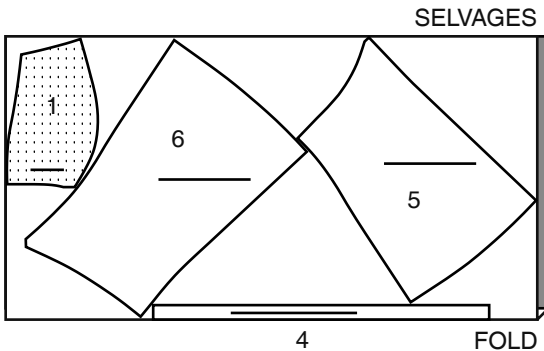
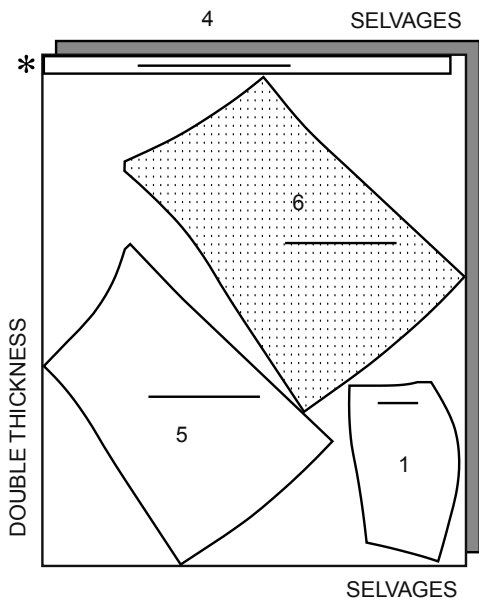
45" (115CM)
WITH NAP
ALL SIZES



DRESS A

USE PIECES 1 4 5 6

45" (115CM)
WITH NAP
ALL SIZES



CONTRAST BOW

USE PIECES 8 9

45" TO 60" (115CM TO 150CM)
WITH NAP
ALL SIZES



DRESS B

USE PIECES 1 4 5 6 8 9

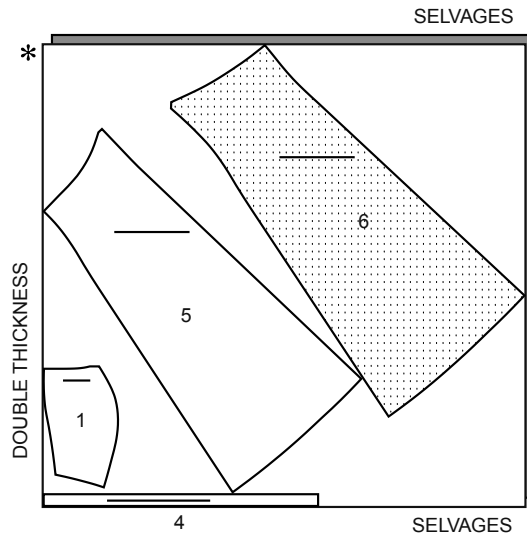
60" (150CM)
WITH NAP
ALL SIZES



DRESS C

USE PIECES 1 4 5 6

60" (150CM)
WITH NAP
ALL SIZES



SEWING TUTORIALS



Build your skills viewing short, easy-to-follow videos at simplicity.com/sewingtutorials

Sewing Directions

FABRIC KEY	RIGHT SIDE	WRONG SIDE	* INTERFACING *	LINING RIGHT SIDE	LINING WRONG SIDE

Read **General Directions** on page 1 before you begin.

Sewing methods in **BOLD TYPE** have Sewing Tutorial Video available. Scan **QR CODE** to watch videos:

- DESIGNER NARROW HEM** – See **Hems: “sewing a baby hem”** video.
- GATHER** – See **Gathering: “sewing two row gathers”** video.
- FLAT DART** – See **Darts: “sewing flat dart”** video.
- SLIPSTITCH** – See **Hand Stitching: “how to slip stitch”** video.
- STITCH IN THE DITCH** – See **Machine Stitches: “how to stitch in the ditch”** video.
- TOPSTITCH** – See **Machine Stitches: “how to topstitch”** video.
- TRIM SEAM** – See **Seams: “how to trim, clip and layer seams”** video.
- UNDERSTITCH** – See **Machine Stitches: “how to understitch”** video.

PATTERN PIECES WILL BE IDENTIFIED BY NUMBERS THE FIRST TIME THEY ARE USED.

STITCH 5/8" (1.5CM) SEAMS WITH RIGHT SIDES TOGETHER UNLESS OTHERWISE STATED.

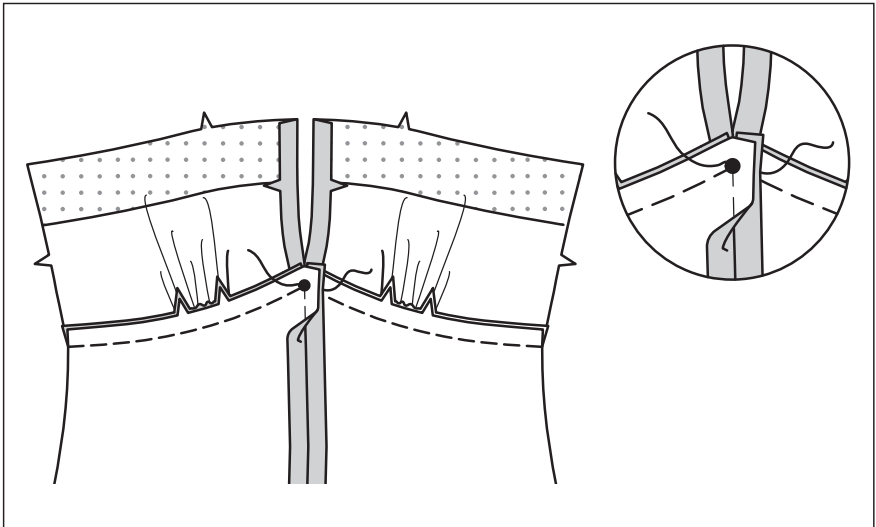
DRESS A, B, C
INTERFACING

- 1.** Pin FRONT INTERFACING (3) to WRONG side of BODICE FRONT (1) along upper edge, matching small and large dots. Fuse interfacing in place following manufacturer's directions.

FRONT

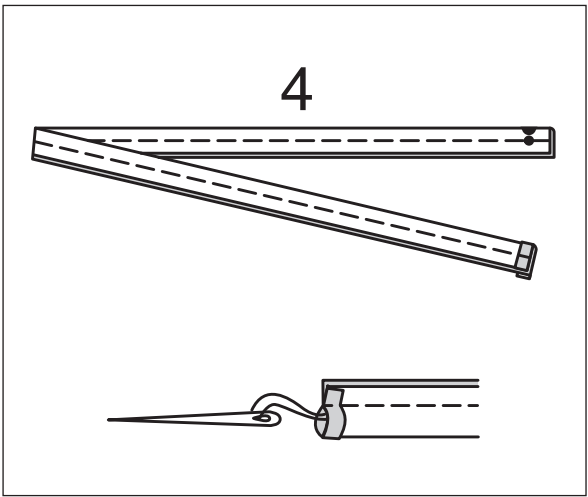
- 2.** To **GATHER** lower edge of BODICE FRONT (1) between the notches, loosen needle tension slightly. On OUTSIDE, stitch 5/8" (1.5cm) from cut edge using a long stitch. Stitch again 1/4" (6mm) from the first stitching within the seam allowance.
- 3.** Pin front edges of bodice front together at center. Stitch center front seam between the small and large dots, back-stitching at dots to reinforce the seam.
- 4.** Pin front edges of FRONT (5) together at center. Stitch center front seam from lower edge to large dot, back-stitching at dot to reinforce the seam.

5



- 5.** With RIGHT sides together and raw edges even, pin lower edge of bodice front to upper edge of front, matching large dots and notches, pulling up gathering stitches to fit. Distribute gathers evenly. Baste between the notches. Stitch empire seam, breaking stitching at large dot.

6



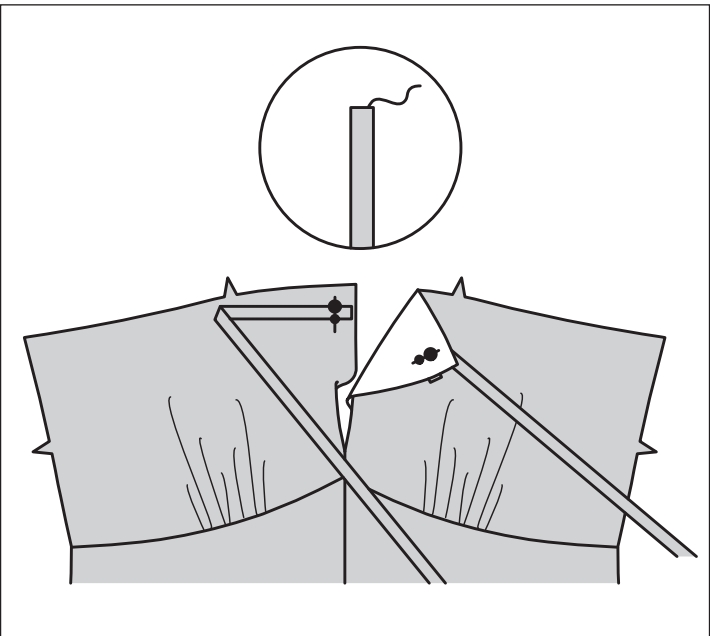
- 6.** To make each strap, press under 3/8" (1cm) on unmarked end of STRAP (4). Fold strap in half, lengthwise, with RIGHT sides together. Stitch in a 3/8" (1cm) seam. **TRIM SEAM.** With a needle, attach a strong thread to unmarked strap end.

7



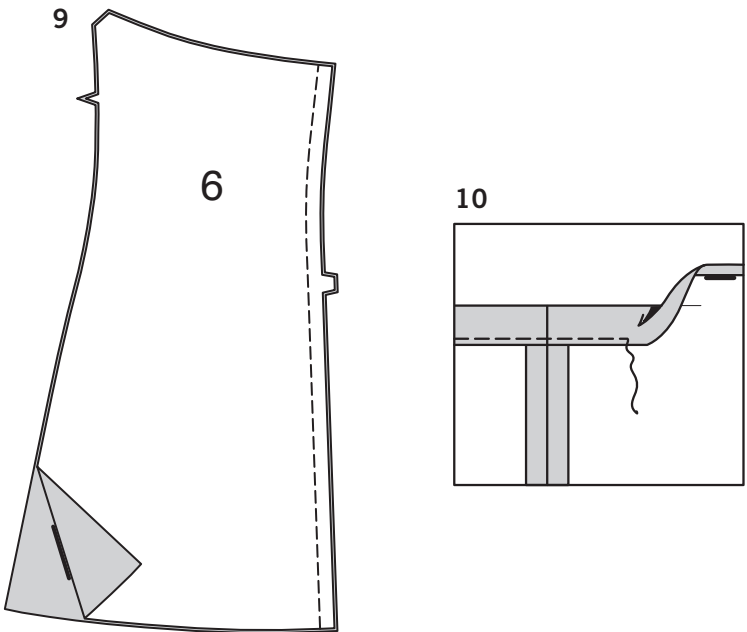
- 7.** Draw needle eye forward, through fold, turning strap RIGHT side out.

8



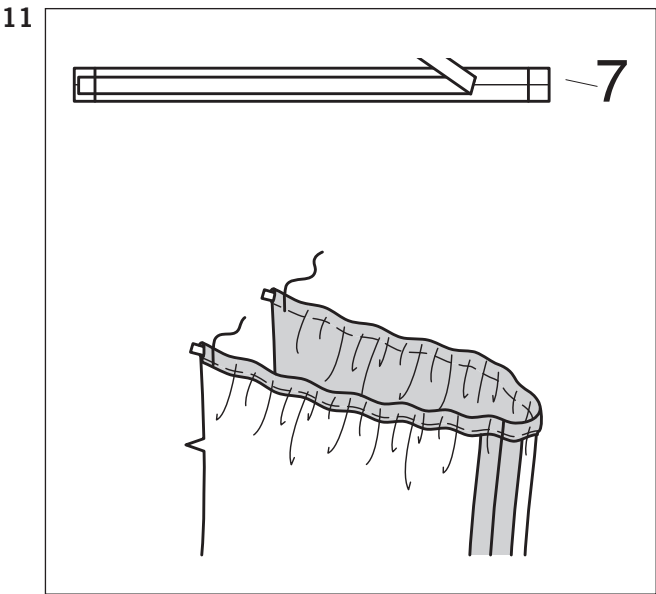
- 8.** Press strap. **SLIPSTITCH** unmarked edges of end together. On OUTSIDE, pin marked end of strap to bodice front, matching small and large dots. Baste across marked end.

BACK

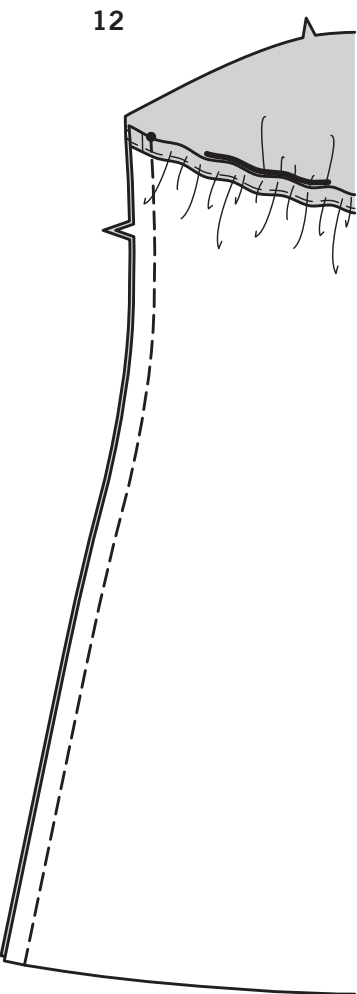


9. Stitch center back edges of BACK (6) sections together.

10. To form casing for elastic, press under 3/4" (2cm) on upper edge of back. Turn under raw edge 1/4" (6mm). Press. Stitch close to inner pressed edge.

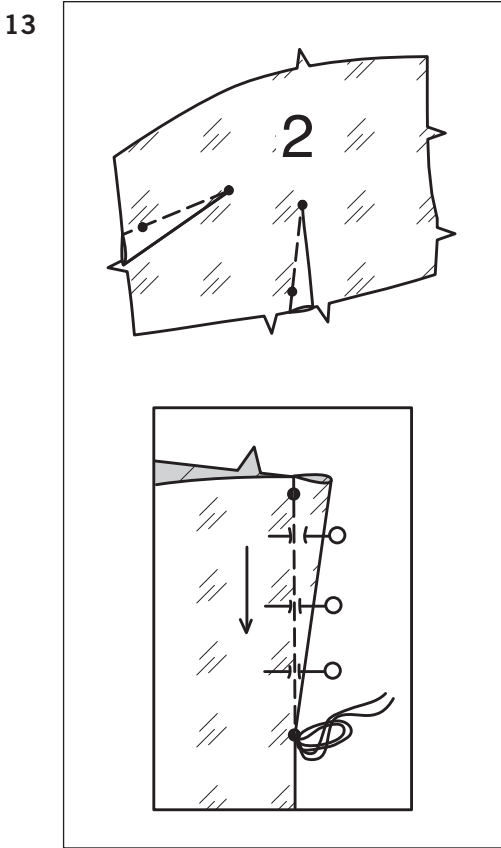


11. Cut a piece of elastic the length of GUIDE FOR ELASTIC (7). Transfer markings. Attach a safety pin to one end. Thread elastic through casing. Stitch across ends, securely.



12. With RIGHT sides together and raw edges even, pin front to back at side edges. (Upper edge of front will extend 5/8" (1.5cm) beyond finished upper edge of back.)

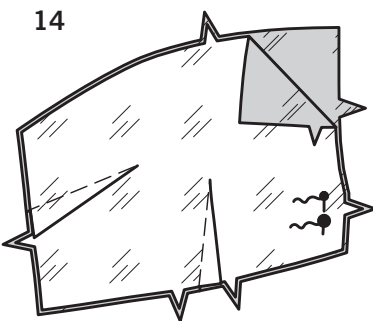
BODICE FRONT LINING



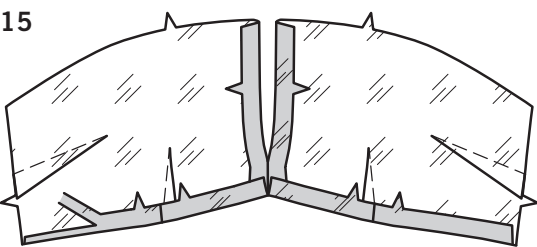
13. To make **FLAT DART**(s) in BODICE FRONT LINING (2), with RIGHT sides together, fold the fabric through the center of the dart, bringing broken lines and small dots together. On INSIDE, place pins at RIGHT angles to the broken lines. Stitch the dart from wide end to point.

Press the dart flat along the stitching to “blend” the stitches, then press dart down or toward center.

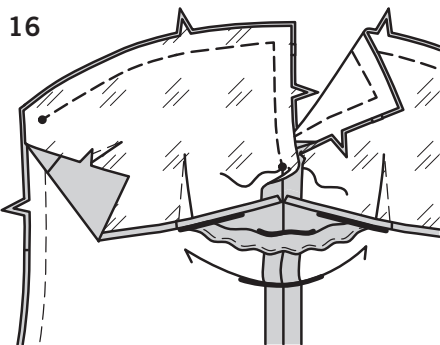
TIP – To prevent a “bubble” at the point, make the last few stitches right on the fold and leave the thread ends long enough to tie a knot. DO NOT back-stitch at the point.



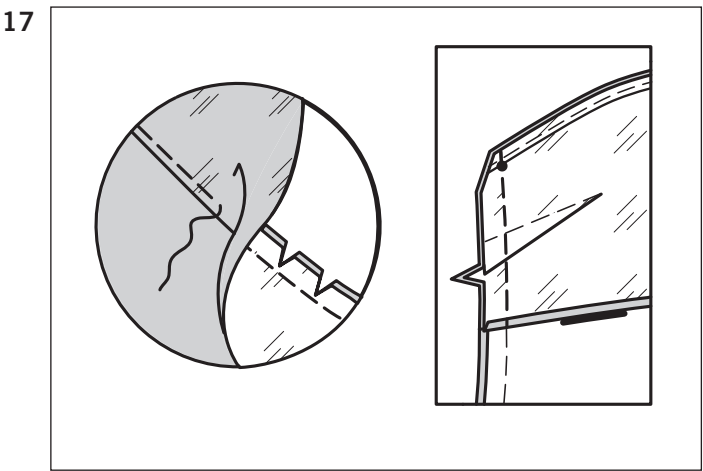
14. Pin front edges of bodice front lining together at center. Stitch center front seam between the small and large dots, back-stitching at dots to reinforce the seam.



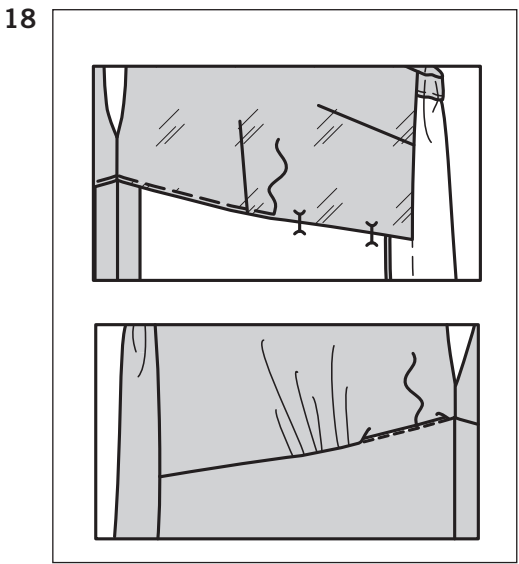
15. Press under 1/2" (1.3cm) on lower edge of lining. Trim to 1/4" (6mm).



16. With RIGHT sides together and raw edges even, pin lining to bodice along upper edge (over WRONG side of bodice back), matching centers and notches. Stitch upper and front edges to the small dot, breaking stitching at dot.

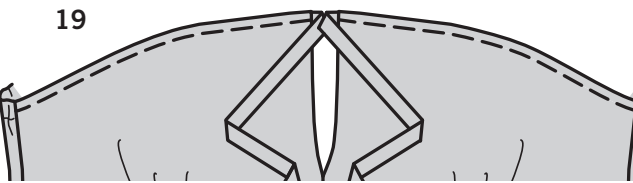


17. UNDERSTITCH the front lining, as far as possible. Stitch lining to dress at side edges over previous stitching. Trim corner.



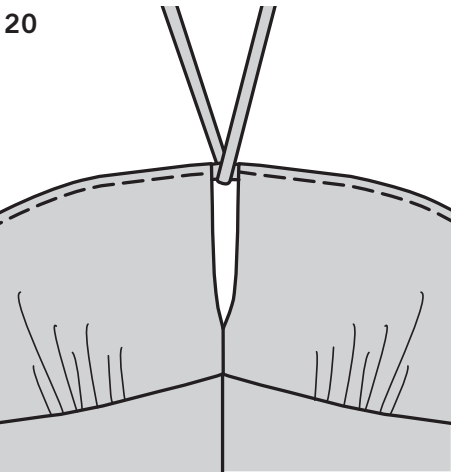
18. Turn front lining to **INSIDE**; press, pressing out the back and seam toward front.

On **INSIDE**, pin pressed edge of lining over seam, placing pins on **OUTSIDE**. On **OUTSIDE**, **STITCH IN THE DITCH** of the seam, catching in pressed edge of lining on **INSIDE**.

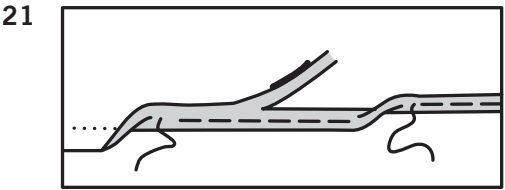


19. On **OUTSIDE**, **TOPSTITCH** upper edge of bodice 1/4" (6mm) from finished edge.

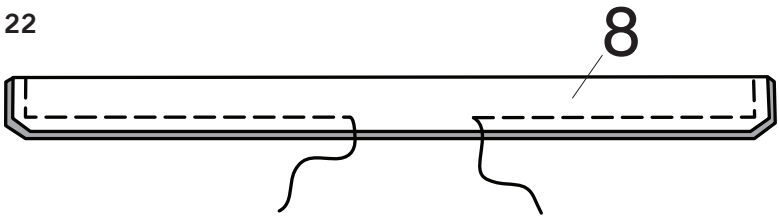
FINISHING



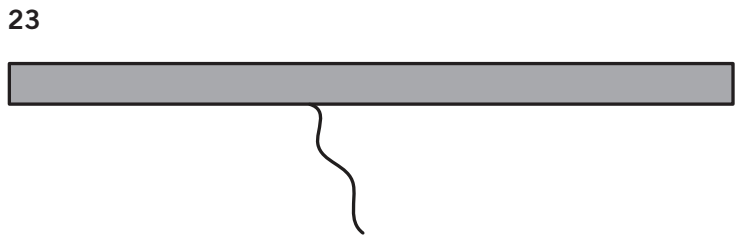
20. Bring straps together at center front and make knot. Bring strap ends to back and tie into a bow when wearing as shown on envelope.



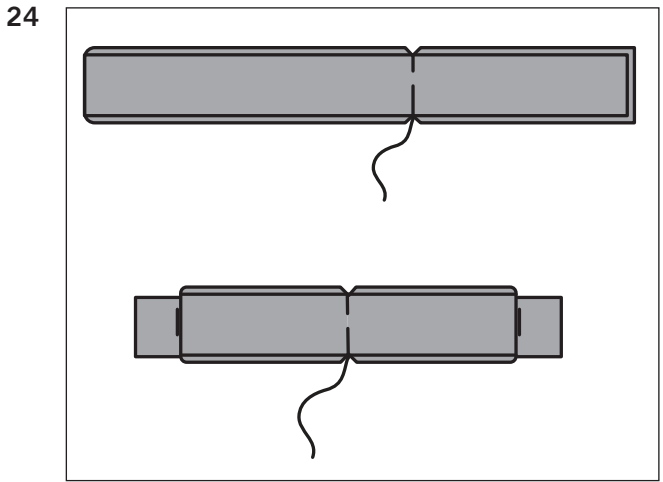
21. To make a **DESIGNER NARROW HEM**, press under 1/4" (6mm) on lower edge of dress. Stitch close to pressed edge. Trim close to stitching. Press under another 1/8" (3mm) and stitch in place.



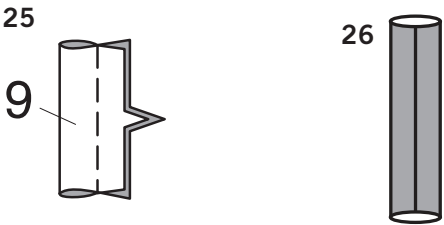
22. FOR VIEWS A, B – Fold BOW (8) in half, lengthwise, with **RIGHT** sides together. Stitch, leaving an opening to turn. **TRIM SEAM**.



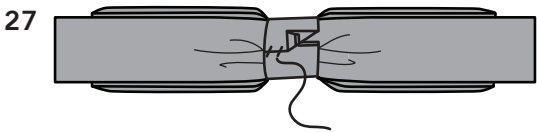
23. Turn bow **RIGHT** side out; press. **SLIPSTITCH** opening closed.



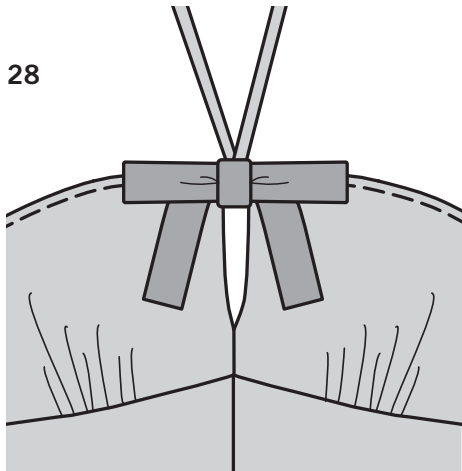
24. Fold bow in half along center line. Stitch along stitching lines, as shown. Bring stitching to center line. Stitch along center line through all thicknesses.



25. Fold KNOT (9) in half, lengthwise, with **RIGHT** sides together. Stitch notched edges. **TRIM SEAM**.



27. Crush bow at center and place knot around center of bow, turning under and lapping one end on **UNDERSIDE**. **SLIPSTITCH** ends securely catching in **UNDERSIDE** of bow.



28. On **OUTSIDE**, hand tack **UNDERSIDE** of bow to strap knot at center front.