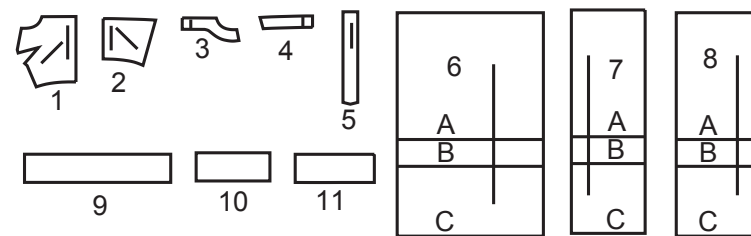


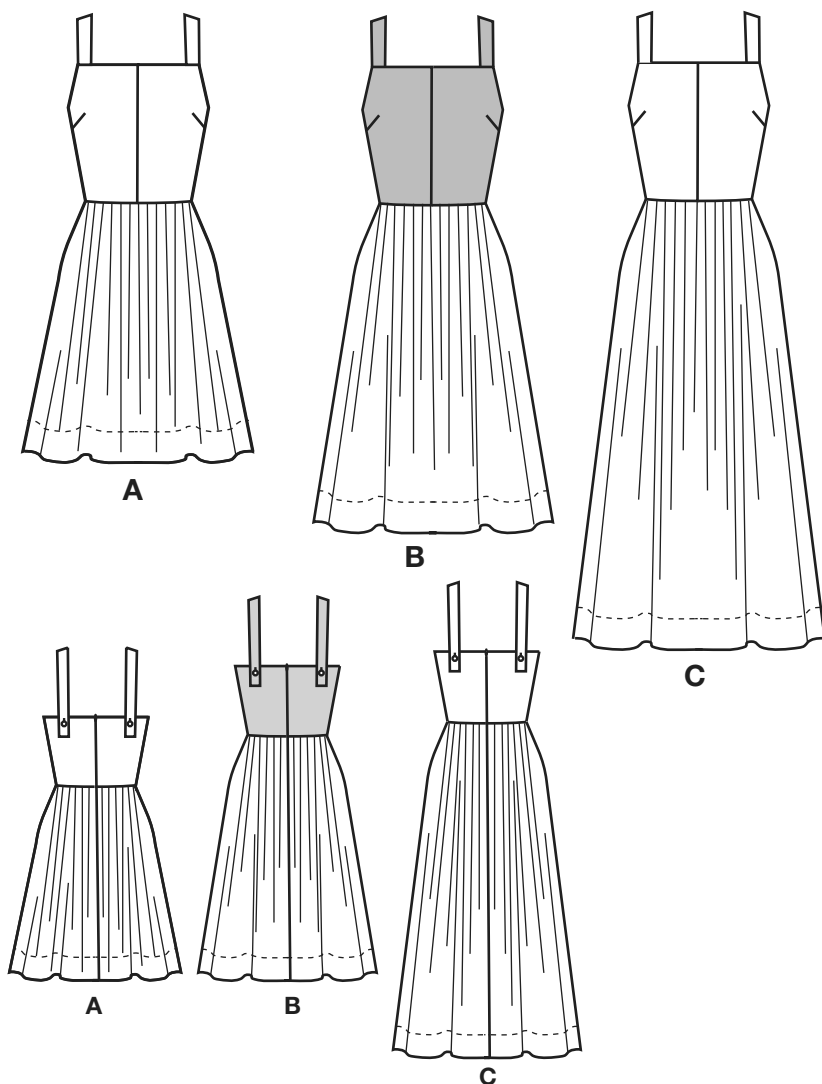
Simplicity®

Thank you for purchasing this Simplicity pattern. We made every effort to provide you with a high quality product.

11 PIECES



- 1 Bodice Front-A,B,C
- 2 Bodice Back-A,B,C
- 3 Front Interfacing-A,B,C
- 4 Back Interfacing-A,B,C
- 5 Shoulder Strap-A,B,C
- 6 Skirt Front-A,B,C
- 7 Skirt Right Back-A,B,C
- 8 Skirt Left Back-A,B,C
- 9 Guide for Pleating-A,B,C (Front)
- 10 Guide for Pleating-A,B,C (Right Back)
- 11 Guide for Pleating-A,B,C (Left Back)



General Directions

The Pattern

- SYMBOLS**
- ↔ GRAIN LINE Place on straight grain of fabric parallel to selvage
 - ⇄ PLACE SOLID LINE on fold of fabric.
 - CENTER FRONT OR BACK of garment.
 - ∇ NOTCHES
 - DOTS
 - CUTTING LINE
 - == LENGTHEN OR SHORTEN LINES

SEAM ALLOWANCE: 5/8" (1.5cm) unless otherwise stated is included but not printed on MULTI-SIZE PATTERNS. Mark your size with colored felt tip pen. See chart on tissue for how to use MULTI-SIZE PATTERNS.

ADJUST IF NEEDED

Make adjustments before placing pattern on fabric.

TO LENGTHEN: Cut pattern between lengthen or shorten lines. Spread pattern evenly, the amount needed and tape to paper.

TO SHORTEN: At lengthen or shorten lines, make an even pleat taking up amount needed. Tape in place.

When lengthen or shorten lines are not given, make adjustments at lower edge of pattern.

Cutting/Marking

BEFORE CUTTING:

PRESS pattern pieces with a warm dry iron. PRE-SHRINK fabric by pre-washing washables or steam-pressing non-washables.

CIRCLE your cutting layout.

PIN pattern to fabric as shown in Cutting Layouts.

• FOR DOUBLE THICKNESS: Fold fabric with RIGHT sides together.

• FOR SINGLE THICKNESS: Place fabric RIGHT side up.

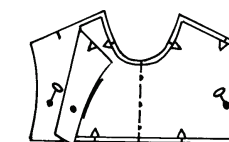
• FOR PILE, SHADED OR ONE WAY DESIGN FABRICS: Use "with nap" layouts

AFTER CUTTING:

Transfer markings to WRONG side of fabric before removing pattern. Use pin and chalk method or dressmaker's tracing paper and wheel.

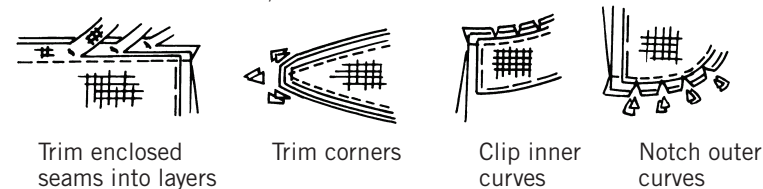
To Quick Mark:

- Snip edge of fabric to mark notches, ends of fold lines and center lines.
- Pin mark dots.



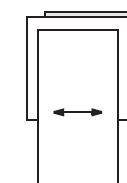
Sewing

- SEW garment following **Sewing Directions**.
- PIN or machine-baste seams matching notches.
- STITCH 5/8" (1.5 cm) seams unless otherwise stated.
- PRESS seams open unless otherwise indicated clipping when necessary so seams will lie flat.
- TRIM seams to reduce bulk, as shown below.

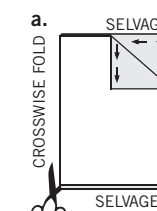


SPECIAL CUTTING NOTES

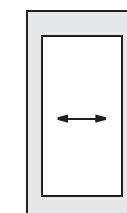
★ If layout shows a piece extending past fold, cut out all pieces except piece that extends.



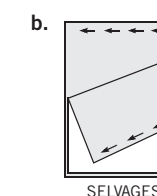
✱ Mark small arrows along both selvages indicating direction of nap or design. Fold fabric crosswise with RIGHT sides together, and cut along fold (a).



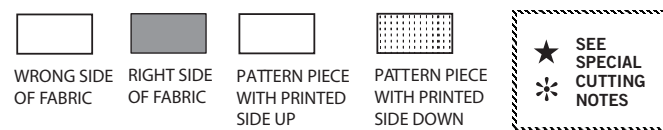
Open out fabric to single thickness. Cut extending piece on RIGHT side of fabric in position shown.



Turn one fabric layer around so arrows on both layers go in the same direction. Place RIGHT sides together (b).



Cutting Layouts

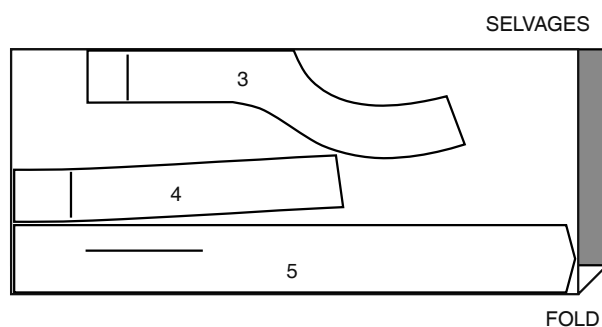


POSITION OF PATTERN PIECES MAY VARY SLIGHTLY ACCORDING TO YOUR PATTERN SIZE

INTERFACING A,B,C

USE PIECES 3 4 5

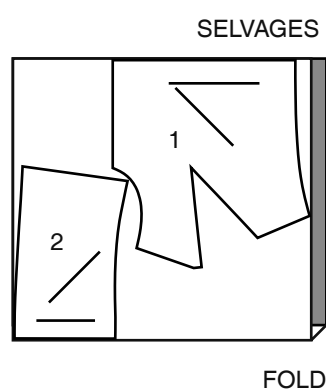
20" (51CM) ALL SIZES



LINING A,B,C (BODICE)

USE PIECES 1 2

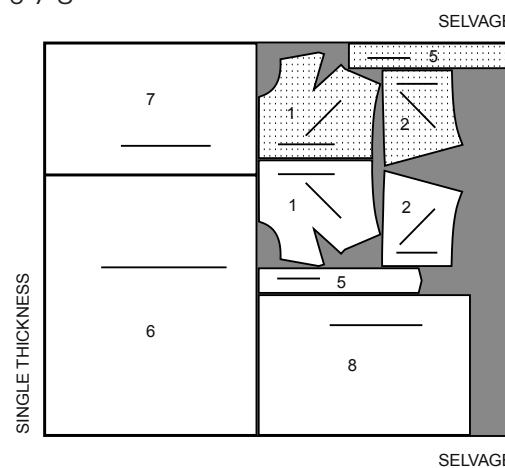
45" (115CM) WITHOUT NAP ALL SIZES



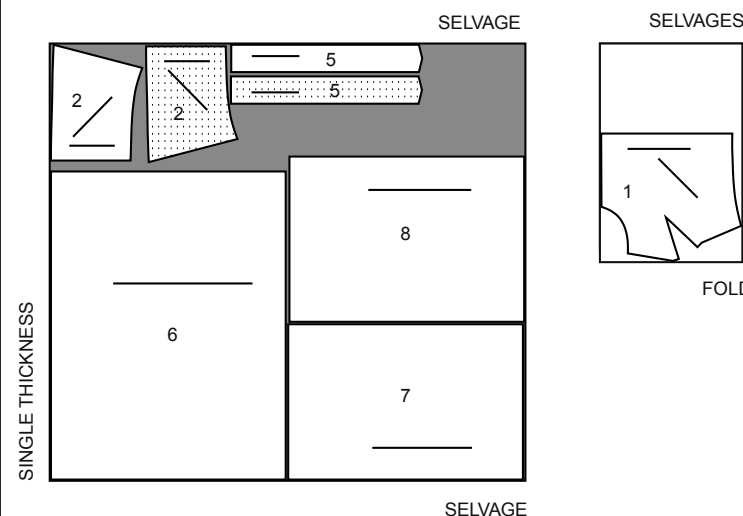
DRESS A

USE PIECES 1 2 5 6 7 8

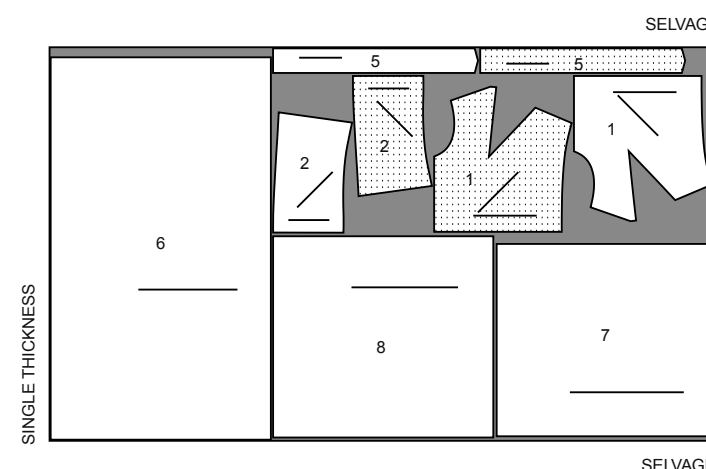
45" (115CM) WITH NAP SIZES 10 12 14



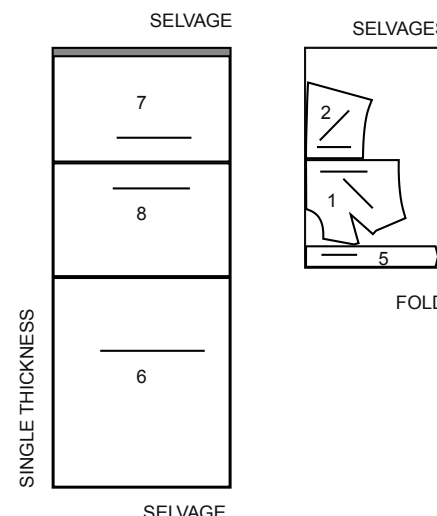
45" (115CM) WITH NAP SIZES 16 18



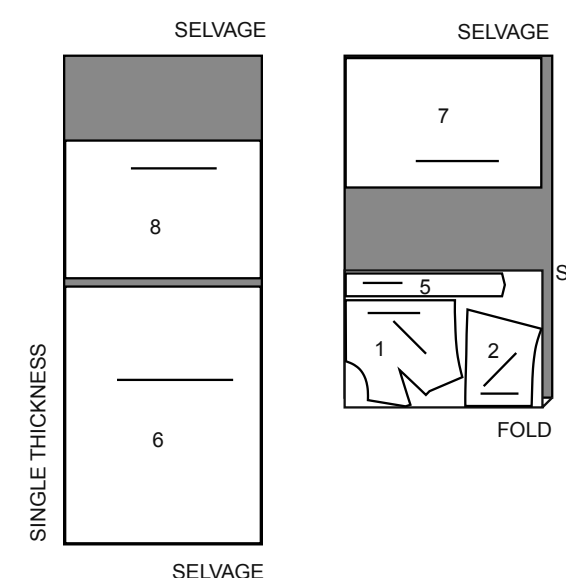
45" (115CM) WITH NAP SIZES 20W 22W 24W 26W 28W



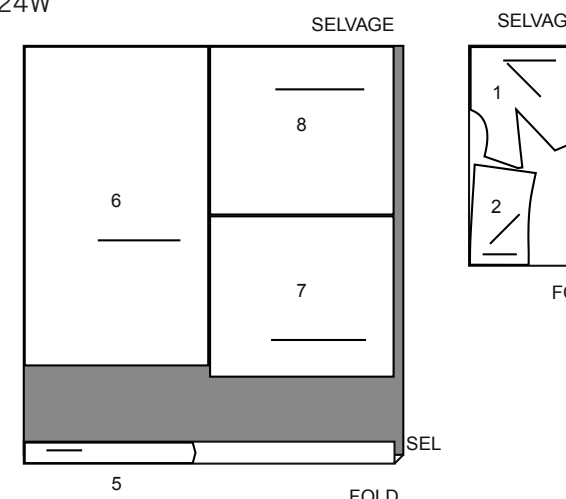
60" (150CM) WITH NAP SIZES 10 12



60" (150CM) WITH NAP SIZES 14 16 18



60" (150CM) WITH NAP SIZES 20W 22W 24W



S3131

2 of 4

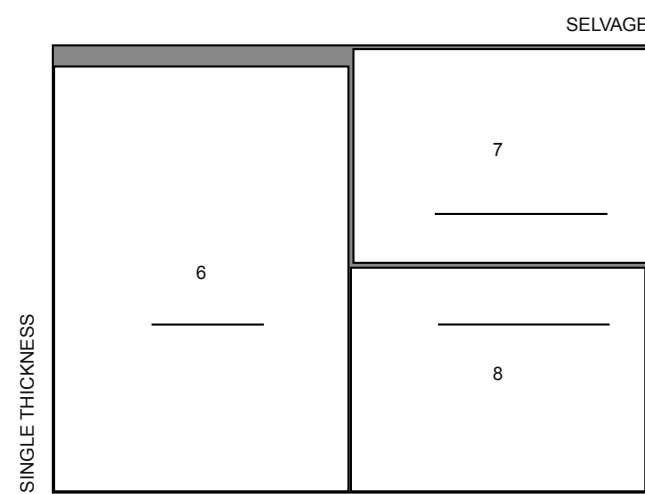
60" (150CM)
WITH NAP
SIZES 26W 28W



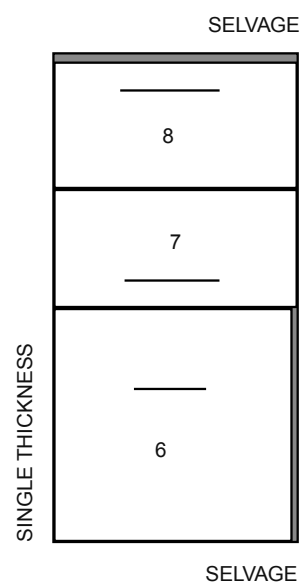
DRESS B

USE PIECES 6 7 8

45" (115CM)
WITH NAP
ALL SIZES



60" (150CM)
WITH NAP
SIZES 10 12



60" (150CM)
WITH NAP
SIZES 14 16 18



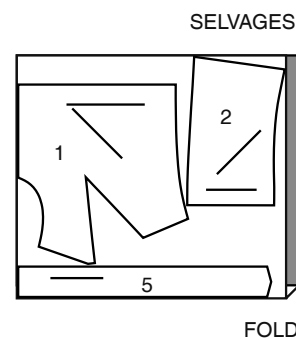
60" (150CM)
WITH NAP
SIZES 20W 22W 24W
26W 28W



CONTRAST B

USE PIECES 1 2 5

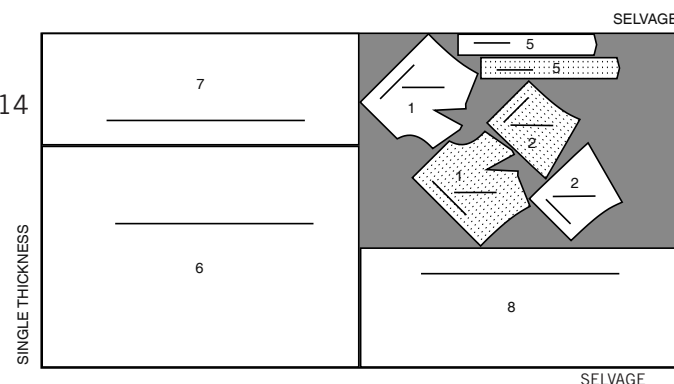
45"/60" (115CM/150CM)
WITH NAP
ALL SIZES



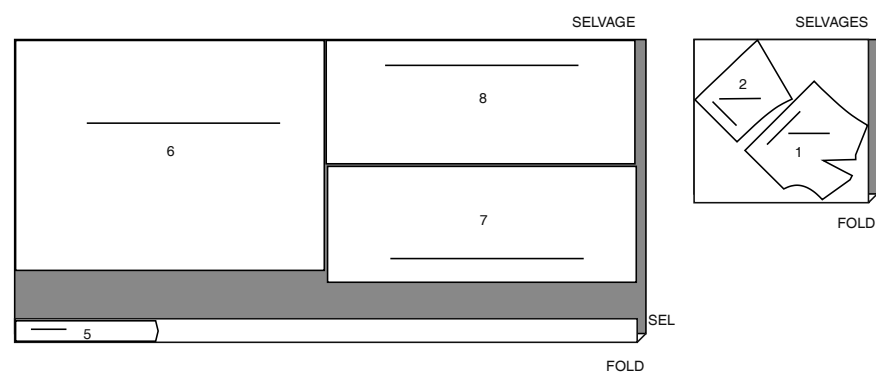
DRESS C

USE PIECES 1 2 5 6 7 8

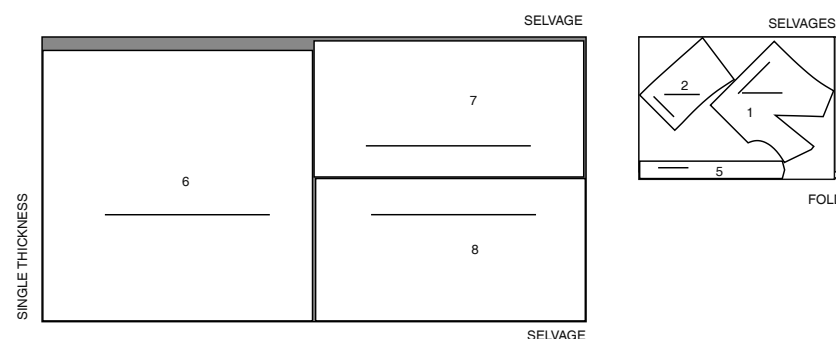
45" (115CM)
WITH NAP
SIZES 10 12 14



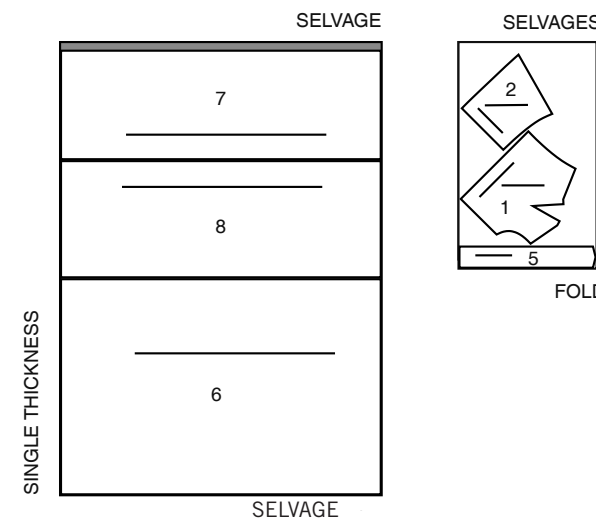
45" (115CM)
WITH NAP
SIZES 16 18



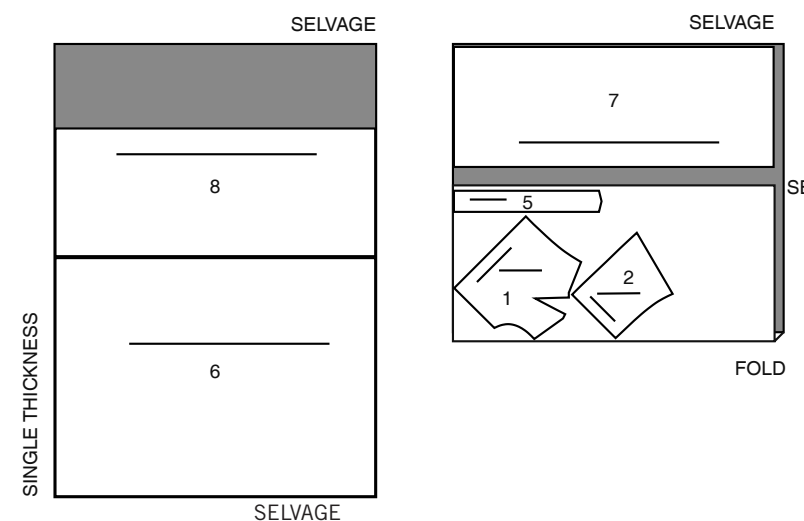
45" (115CM)
WITH NAP
SIZES 20W 22W 24W 26W 28W



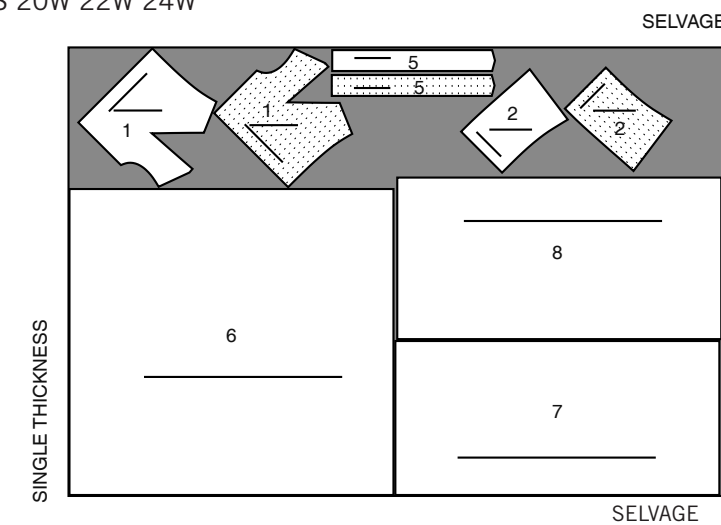
60" (150CM)
WITH NAP
SIZES 10 12



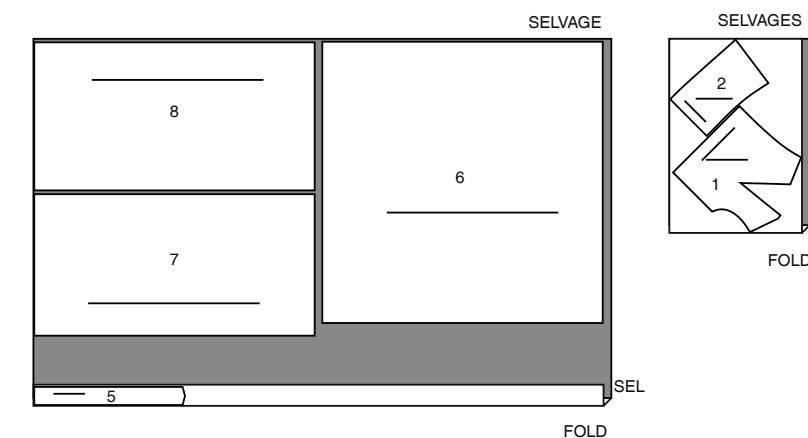
60" (150CM)
WITH NAP
SIZES 14 16 18



60" (150CM)
WITH NAP
SIZES 20W 22W 24W



60" (150CM)
WITH NAP
SIZES 26W 28W



Sewing Directions

FABRIC KEY

RIGHT SIDE	WRONG SIDE	INTERFACING	LINING (RIGHT SIDE)	LINING (WRONG SIDE)
------------	------------	-------------	---------------------	---------------------

Sewing methods in **BOLD TYPE** have Sewing Tutorial Video available. Scan **QR CODE** to watch videos:

SLIPSTITCH – See **Hand Stitching**: “how to slip stitch” video.

STAYSTITCH – See **Machine Stitches**: “how to do stay stitching” video.

INVISIBLE ZIPPER – See **Zippers**: “sewing an invisible zipper” video.

UNDERSTITCH - See **Machine Stitches**: “how to understitch” video.

GLOSSARY OF SEWING METHODS

Sewing methods shown in *ITALICS* are defined below:

DART SEAM- To stitch dart seam, with **RIGHT** sides together, bring broken lines together carefully matching small dots. On **INSIDE**, place pins at **RIGHT** angles to the broken lines. Stitch the dart seam from outer edge to the point.

TIP- To prevent a “bubble” at the point, make the last few stitches right on the fold and leave the thread ends long enough to tie a knot. **DO NOT** back-stitch at the point.

Press the dart seam flat along the stitching to “blend” the stitches, then press dart as indicated in the Sewing Directions.

SEWING TUTORIALS



Build your skills viewing short, easy-to-follow videos at simplicity.com/sewingtutorials

PATTERN PIECES WILL BE IDENTIFIED BY NUMBERS THE FIRST TIME THEY ARE USED.

STITCH 5/8" (1.5CM) SEAMS WITH RIGHT SIDES TOGETHER UNLESS OTHERWISE STATED.

DRESS A, B, C

NOTE: Under each sub-heading, the first View will be illustrated, unless otherwise indicated

BODICE

1. Pin FRONT INTERFACING (3) to WRONG side of BODICE FRONT (1), matching notches and having upper edges even. Fuse, following manufacturer's instructions. Stitch **DART SEAM** in bodice front.

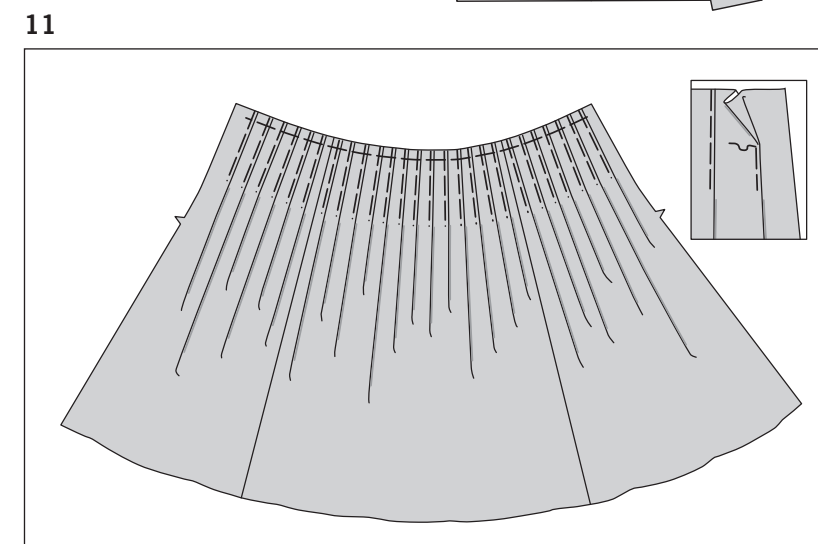
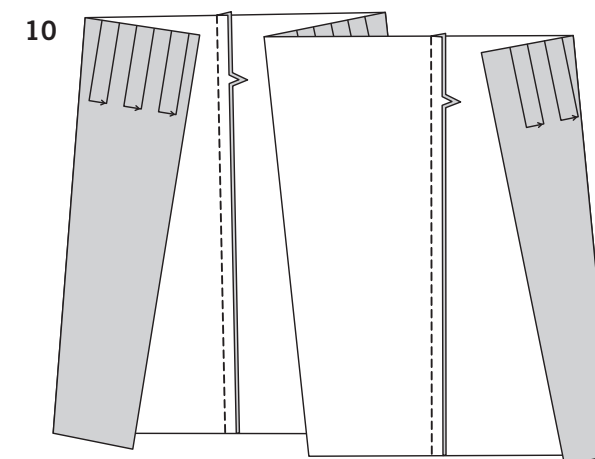
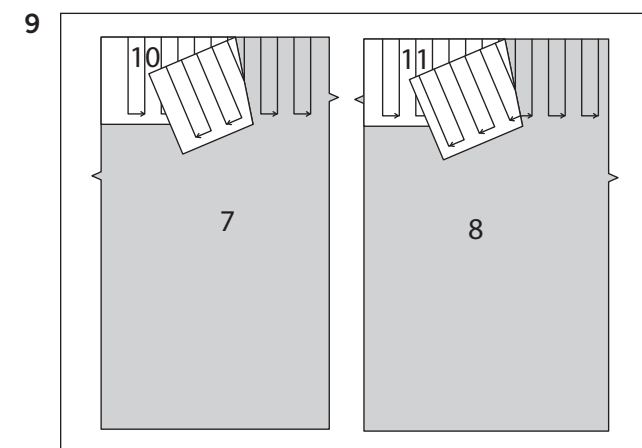
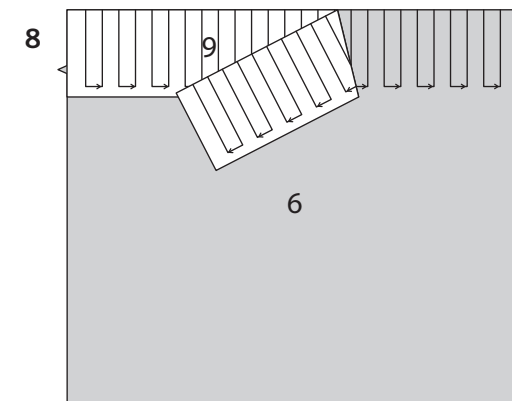
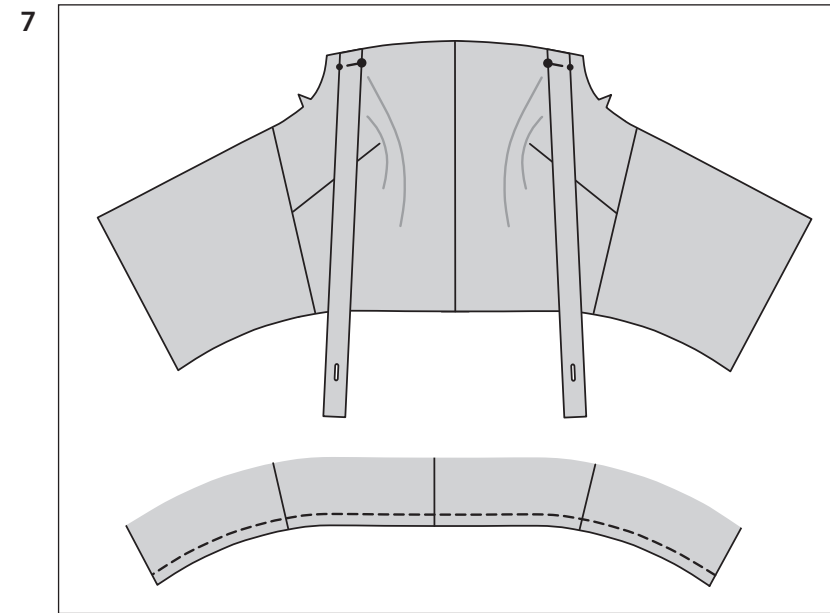
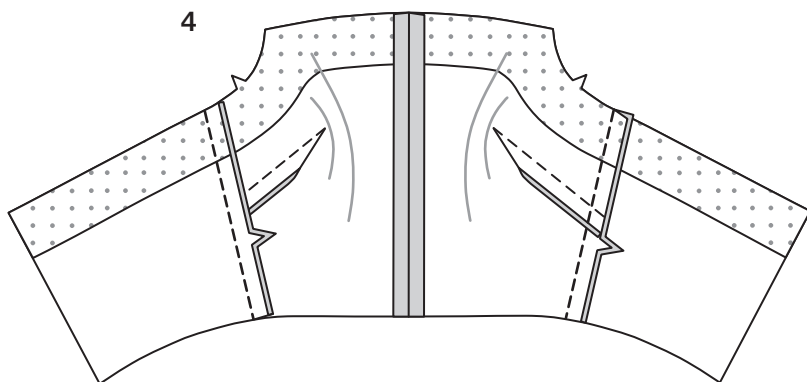
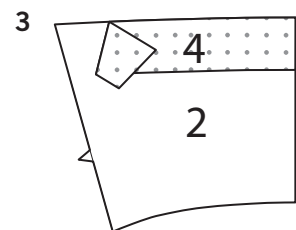
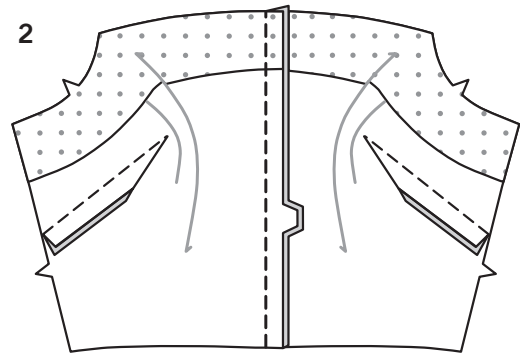
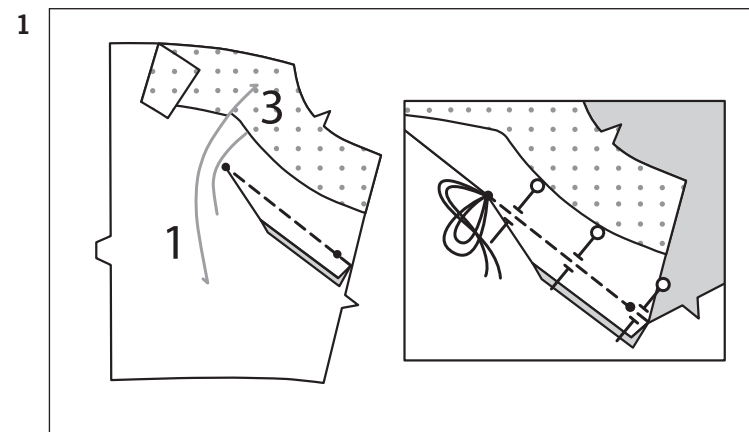
2. Stitch bodice front sections together at center front seam.

3. Pin BACK INTERFACING (4) to WRONG side of BODICE BACK (2), having upper, back and side edges even. Fuse, following manufacturer's instructions.

4. Stitch bodice back sections to bodice front at side edges.

5. Fuse INTERFACING to WRONG side of SHOULDER STRAP (5) sections. With RIGHT sides together, fold each shoulder strap in half lengthwise, Stitch in a 3/8"(1cm) seam, leaving end with symbols open.

6. Turn strap. Press. Baste raw edges. Make buttonholes in straps at markings.



7. On OUTSIDE, pin straps to upper edge of bodice front, matching small and large dots. Baste. To **STAYSTITCH**, stitch 1/2"(1.3cm) from lower edge of bodice.

SKIRT AND ZIPPER

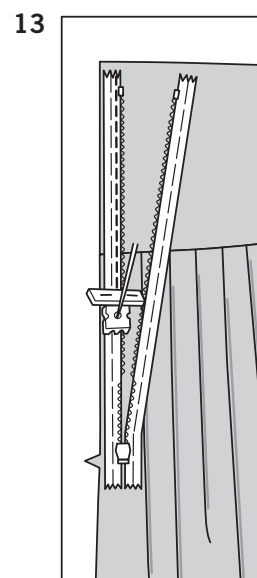
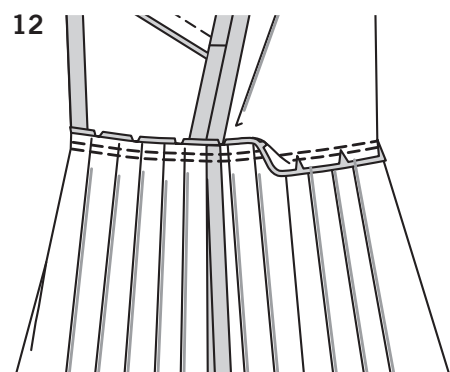
8. With RIGHT sides up, pin GUIDE FOR PLEATING (9) to upper edge of SKIRT FRONT (6), matching centers, having upper and side edges even. Transfer markings.

9. With RIGHT sides up, pin GUIDE FOR PLEATING (10) to upper edge of SKIRT RIGHT BACK (7), matching centers, having upper and side edges even. Transfer markings. With RIGHT sides up, pin GUIDE FOR PLEATING (11) to upper edge of SKIRT LEFT BACK (8), matching centers, having upper and side edges even. Transfer markings.

10. Stitch skirt back sections to skirt front at side edges.

11. To make pleats in skirt, on OUTSIDE, crease along solid lines. Bring creases to broken lines. Pin. Baste along fold and across upper edge. Press.

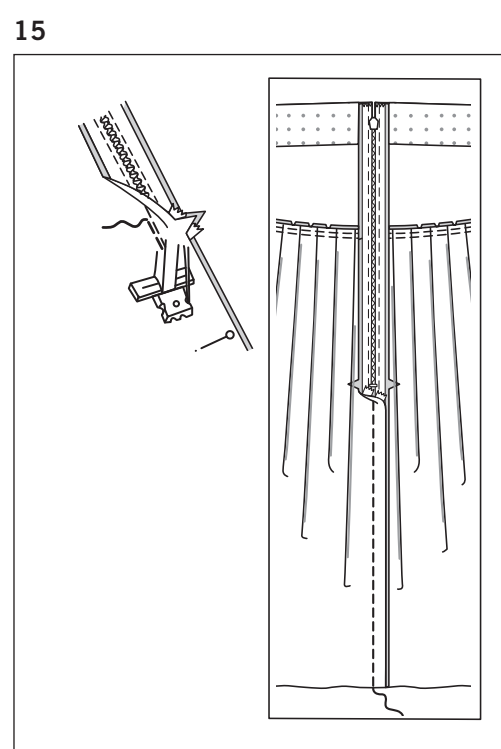
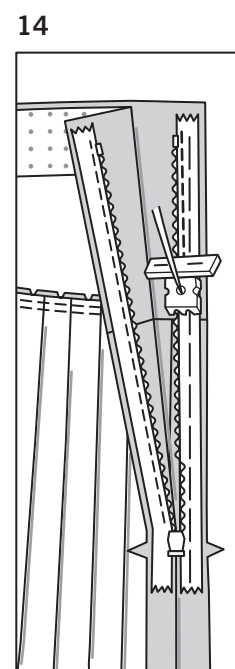
NOTE: The fold basting is used to hold the pleats in place during the construction process and should be removed when garment is complete. For clarify purposes, the fold basting will be shown in the first illustration only.



12. With RIGHT sides together, pin skirt to lower edge of bodice, matching centers and seams, clipping bodice to staystitching, as needed. Stitch. Stitch again 1/4" (6mm) away in seam allowance. Trim close to second stitching. Press seam toward bodice.

NOTE: Stitch the **INVISIBLE ZIPPER** using an invisible zipper foot. If the zipper is longer than the zipper opening, adjust after the zipper is inserted.

13. Open the zipper and press the tape using a cool iron. On OUTSIDE, pin RIGHT side of the zipper face down on the RIGHT side of the zipper opening. Have the coil along the seam line, the tape within the seam allowance and the top stop 3/4" (2cm) below upper edge, as shown. Hand-baste along center of the tape. Position zipper foot at the top of the zipper with RIGHT groove of the foot over coil. Stitch along tape to the notch. Back-stitch to reinforce.

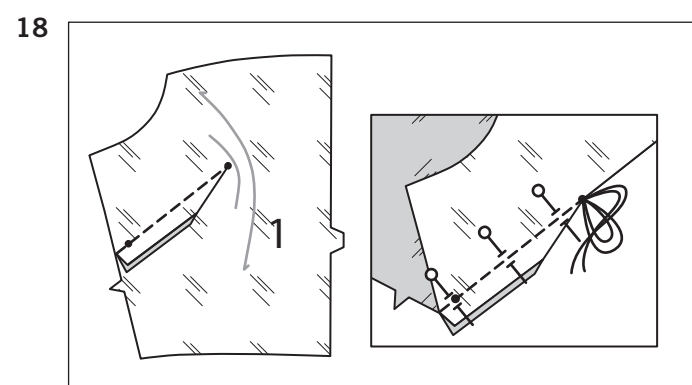
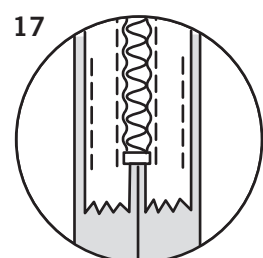
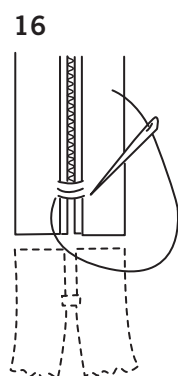


14. Pin the remaining half of the zipper to the LEFT side of the zipper opening in same manner. Hand-baste along the center of the tape. Position zipper foot at the top of the zipper with LEFT groove over the coil. Stitch along tape to lower notch, keeping dress free. Back-stitch to reinforce.

15. Close zipper and check that it is invisible from the OUTSIDE. Pull the free ends of the zipper tape away from the seam allowance. Pin remaining center back seam together below zipper. Position zipper foot all the way to the LEFT so the needle goes down through the outer notch of the foot. Start stitching seam 1/4" (6mm) above lowest stitch and slightly to the LEFT. Stitch seam for about 3" (7.5cm). Stitch remainder of seam using your regular presser foot.

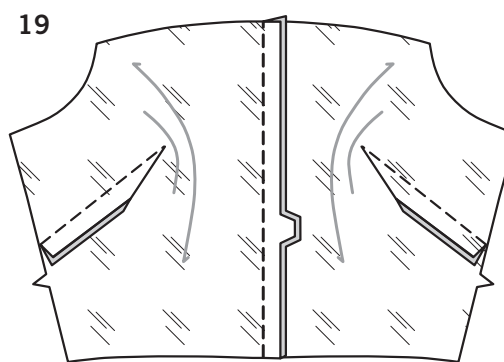
16. If the zipper is longer than the opening, using a strong thread, hand-sew a few small stitches across ends of coils at end of opening. Trim away lower end of zipper tape to within 5/8" (1.5cm) of hand-stitches.

17. If you prefer, open out each seam allowance at end of zipper and stitch tape to seam allowance.

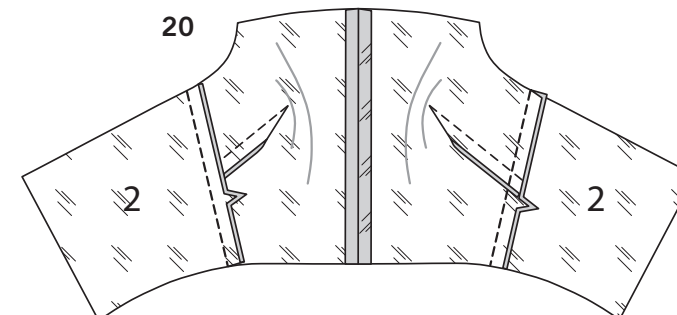


FINISHING

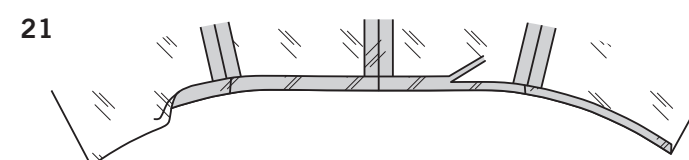
18. Stitch **DART SEAM** in bodice front LINING (1).



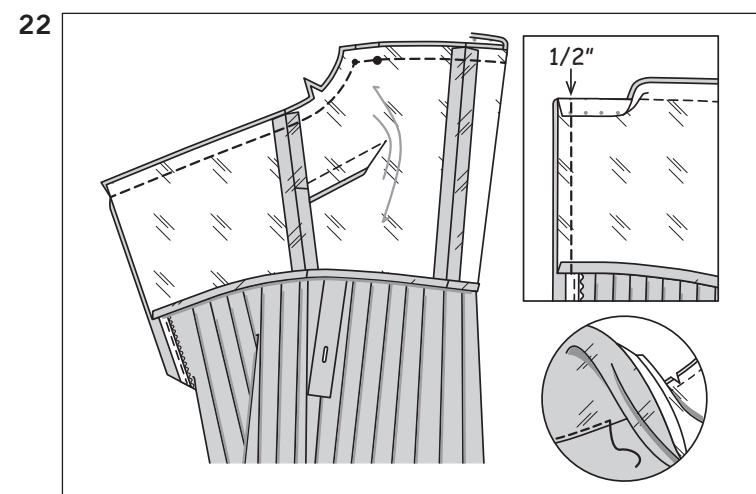
19. Stitch bodice front lining sections together at center front seam.



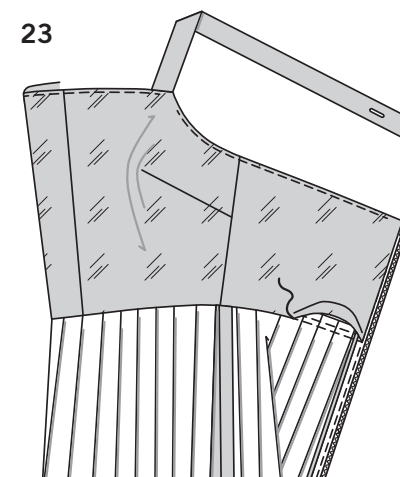
20. Stitch bodice back LINING (2) sections to bodice front lining at side edges.



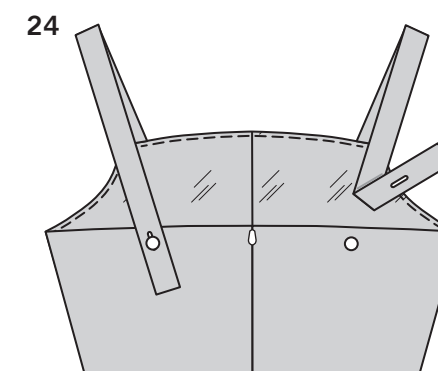
21. Press under seam allowances on lower edge of lining. Trim pressed seam allowances to 3/8" (1cm).



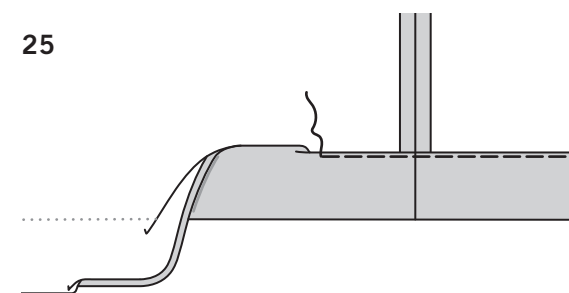
22. Open out back opening edges of dress, rolling the zipper teeth away from the opening edge. With RIGHT sides together, pin lining to dress, matching centers; pin back opening edges together. Stitch upper edges. Clip curves. Using an adjustable zipper foot, stitch 1/2" (1.3cm) from back edges, keeping zipper teeth free. Do not trim back edges. **UNDERSTITCH** lining as far as possible.



23. Turn lining to INSIDE, rolling zipper teeth back in place; press. To **SLIPSTITCH** pressed edge over seam, slide needle through a folded edge, then pick up a thread of underneath.



24. Sew buttons to bodice back at small dots.



25. Mark garment length. Press up hem along marking. Mark depth of hem; trim evenly. Press under 1/4" (6mm) on raw edge. Stitch close to inner pressed edge.