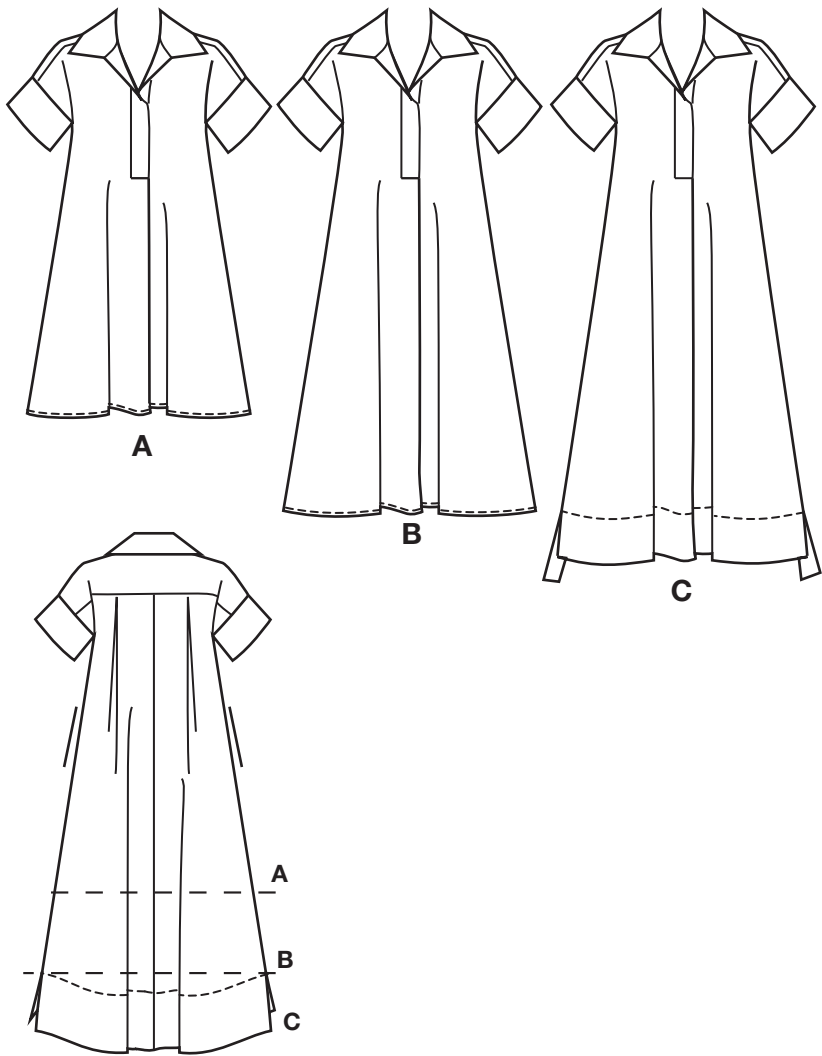
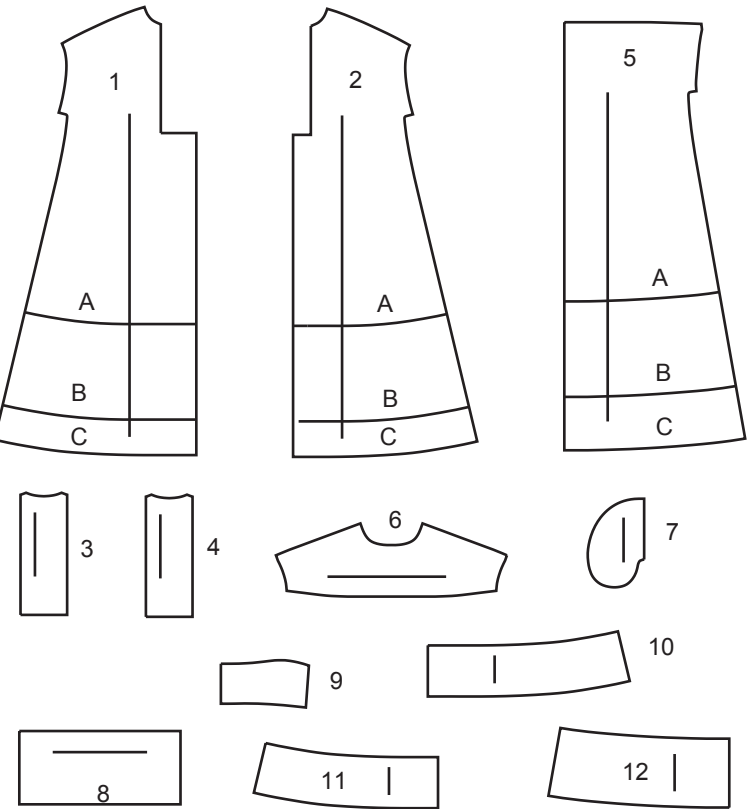


Thank you for purchasing this Simplicity pattern.
We made every effort to provide you with a high quality product.



12 PIECES



- 1 RIGHT FRONT - A,B,C
2 LEFT FRONT - A,B,C
3 RIGHT PLACKET - A,B,C
4 LEFT PLACKET - A,B,C
5 BACK - A,B,C
6 YOKE BACK - A,B,C
7 POCKET - A,B,C
8 SLEEVE BAND - A,B,C
9 COLLAR - A,B,C
10 RIGHT FRONT FACING - C
11 LEFT FRONT FACING - C
12 BACK FACING - C

General Directions

The Pattern

- SYMBOLS**
- GRAIN LINE Place on straight grain of fabric parallel to selvage
 - PLACE SOLID LINE on fold of fabric.
 - CENTER FRONT OR BACK of garment.
 - NOTCHES
 - DOTS
 - CUTTING LINE
 - LENGTHEN OR SHORTEN LINES

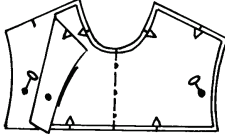
SEAM ALLOWANCE: 5/8" (1.5cm) unless otherwise stated is included but not printed on MULTI-SIZE PATTERNS. Mark your size with colored felt tip pen. See chart on tissue for how to use MULTI-SIZE PATTERNS.

- ADJUST IF NEEDED**
- Make adjustments before placing pattern on fabric.
- TO LENGTHEN:**
Cut pattern between lengthen or shorten lines. Spread pattern evenly, the amount needed and tape to paper.
- TO SHORTEN:**
At lengthen or shorten lines, make an even pleat taking up amount needed. Tape in place.

When lengthen or shorten lines are not given, make adjustments at lower edge of pattern.

Cutting/Marking

- BEFORE CUTTING:**
- PRESS pattern pieces with a warm dry iron. PRE-SHRINK fabric by pre-washing washables or steam-pressing non-washables.
- CIRCLE your cutting layout.
- PIN pattern to fabric as shown in Cutting Layouts.
- FOR DOUBLE THICKNESS: Fold fabric with RIGHT sides together.
 - FOR SINGLE THICKNESS: Place fabric RIGHT side up.
 - FOR PILE, SHADED OR ONE WAY DESIGN FABRICS: Use "with nap" layouts
- AFTER CUTTING:**
- Transfer markings to WRONG side of fabric before removing pattern. Use pin and chalk method or dressmaker's tracing paper and wheel.
- To Quick Mark:**
- Snip edge of fabric to mark notches, ends of fold lines and center lines.
 - Pin mark dots.



SPECIAL CUTTING NOTES

- ★ If layout shows a piece extending past fold, cut out all pieces except piece that extends.
 - ✱ Mark small arrows along both selvages indicating direction of nap or design. Fold fabric crosswise with RIGHT sides together, and cut along fold (a).
- Open out fabric to single thickness. Cut extending piece on RIGHT side of fabric in position shown.
- Turn one fabric layer around so arrows on both layers go in the same direction. Place RIGHT sides together (b).

Cutting Layouts

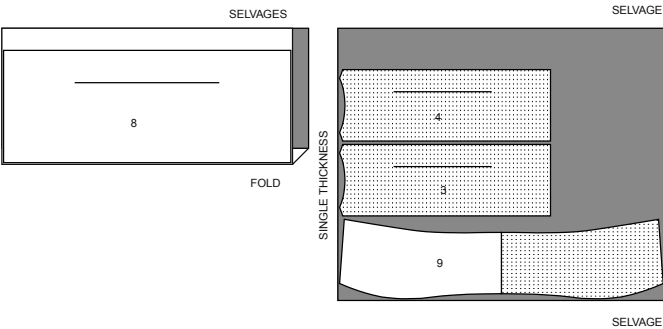
- WRONG SIDE OF FABRIC
- RIGHT SIDE OF FABRIC
- PATTERN PIECE WITH PRINTED SIDE UP
- PATTERN PIECE WITH PRINTED SIDE DOWN
- ★ SEE SPECIAL CUTTING NOTES

POSITION OF PATTERN PIECES MAY VARY SLIGHTLY ACCORDING TO YOUR PATTERN SIZE

INTERFACING A,B,C

USE PIECES 3 4 8 9

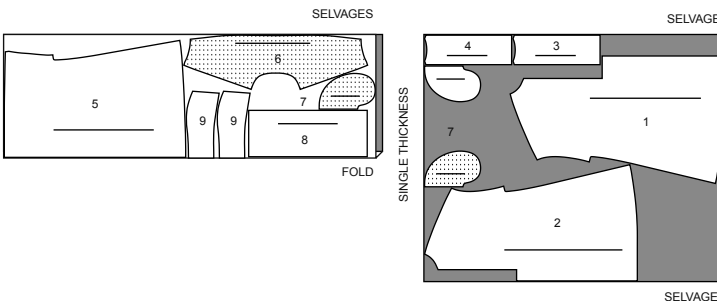
20" (51CM)
ALL SIZES



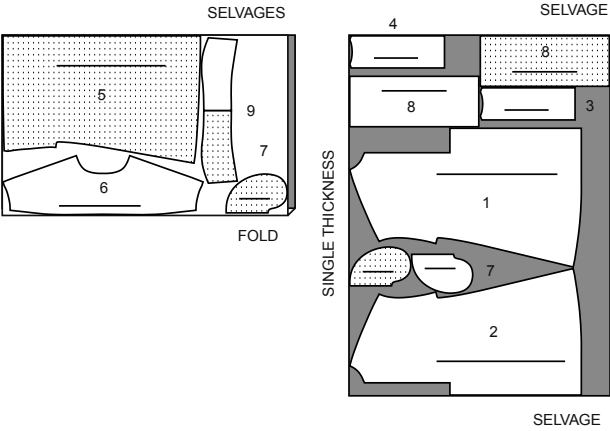
DRESS A

USE PIECES 1 2 3 4 5 6 7 8 9

45" (115CM)
WITH NAP
ALL SIZES



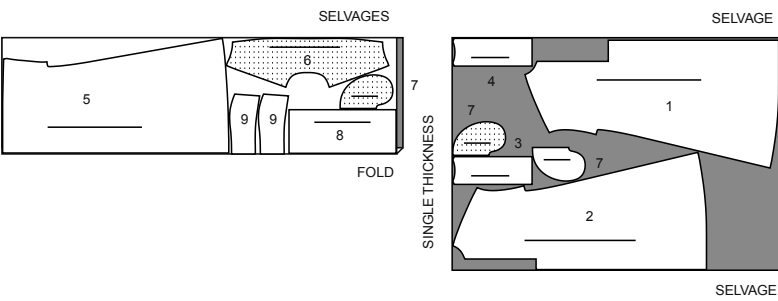
60" (150CM)
WITH NAP
ALL SIZES



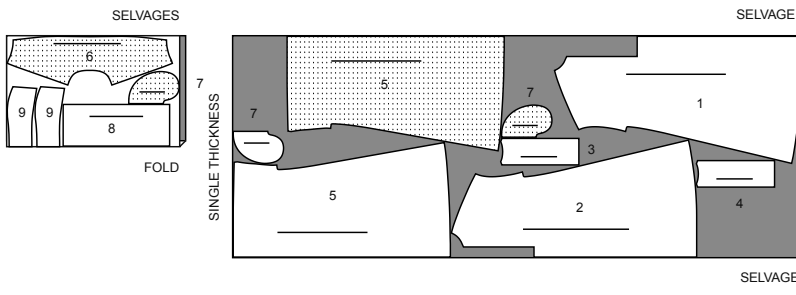
DRESS B

USE PIECES 1 2 3 4 5 6 7 8 9

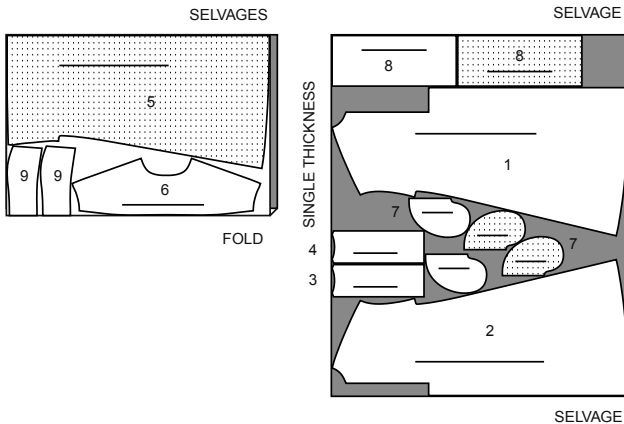
45" (115CM)
WITH NAP
SIZES 6 8 10 12 14 16 18 20



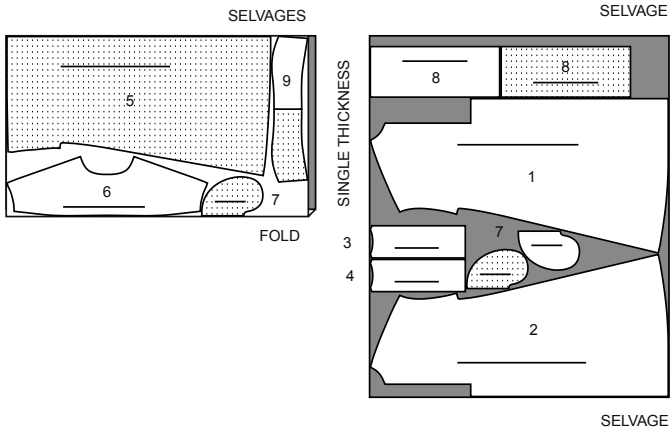
45" (115CM)
WITH NAP
SIZES 22 24



60" (150CM)
WITH NAP
SIZES 6 8 10 12 14 16 18 20



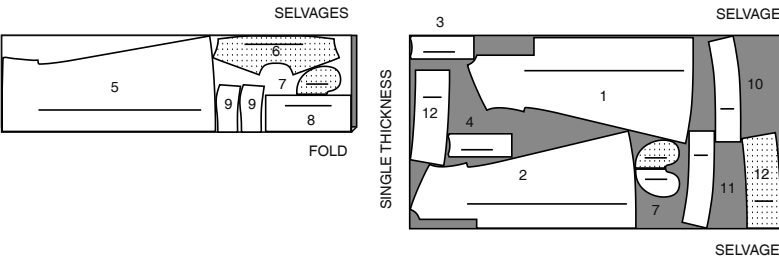
60" (150CM)
WITH NAP
SIZES 22 24



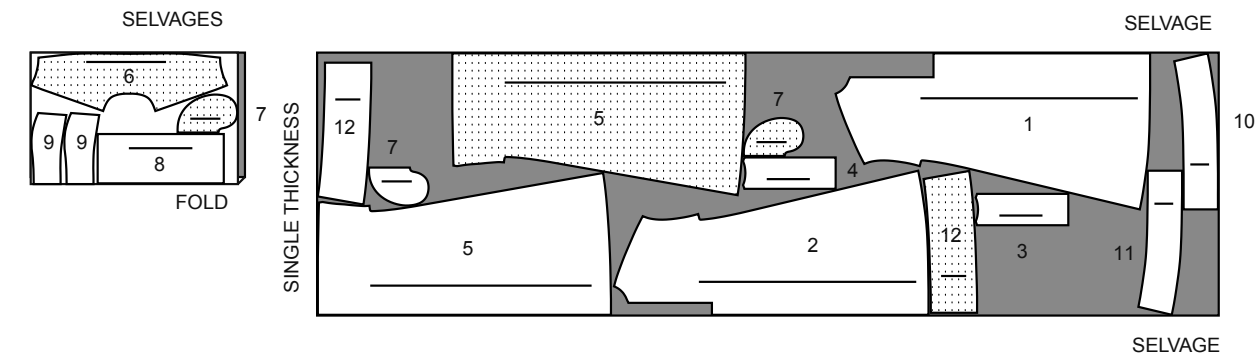
DRESS C

USE PIECES 1 2 3 4 5 6 7 8 9 10 11 12

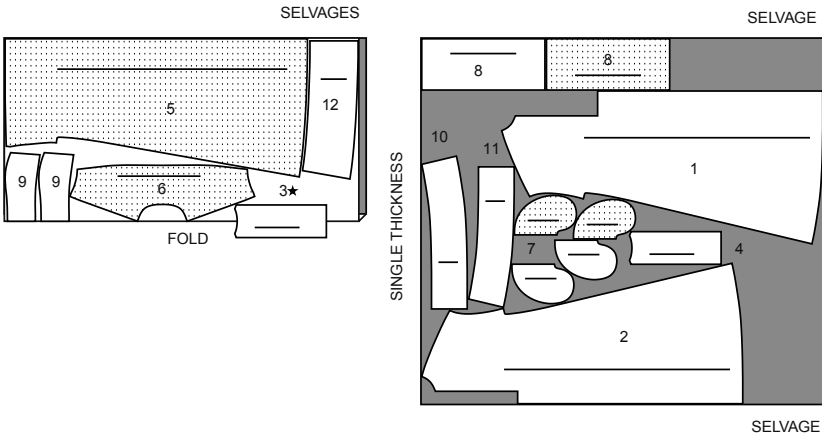
45" (115CM)
WITH NAP
SIZES 6 8 10 12 14 16



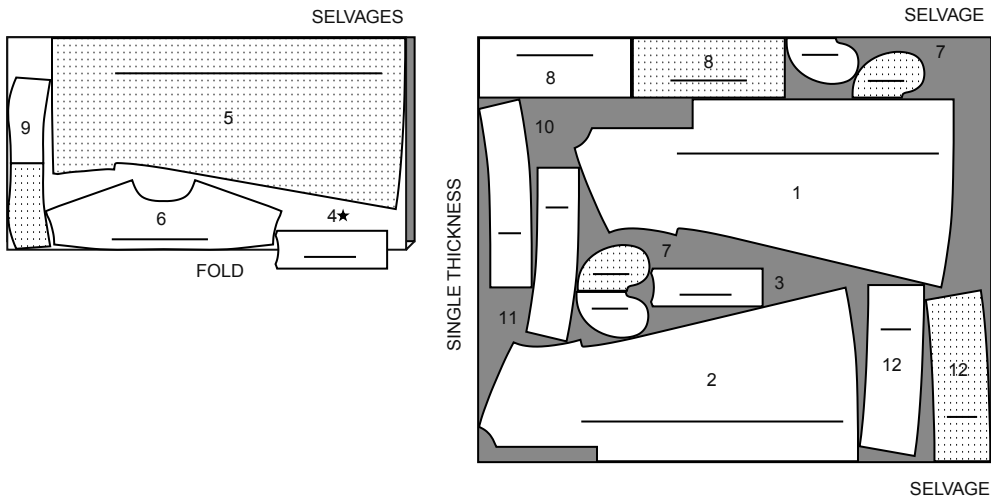
45" (115CM)
WITH NAP
SIZES 18 20 22 24



60" (150CM)
WITH NAP
SIZES 6 8 10 12 14 16 18



60" (150CM)
WITH NAP
SIZES 20 22 24



Sewing Directions

FABRIC KEY

RIGHT SIDE	WRONG SIDE	INTERFACING	LINING (RIGHT SIDE)	LINING (WRONG SIDE)
------------	------------	-------------	---------------------	---------------------

Read **General Directions** on page 1 before you begin.

Sewing methods in **BOLD TYPE** have Sewing Tutorial Video available. Scan **QR CODE** to watch videos:

EDGE STITCH - See Machine Stitches: “how to edgestitch” video.

NARROW HEM - See Hems: “sewing narrow hems” video.

REINFORCE - See Machine Stitches: “how to reinforce” video.

STAYSTITCH - See Machine Stitches: “how to do stay-stitching” video.

STITCH IN THE DITCH - See Machine Stitches: “how to stitch in the ditch” video.

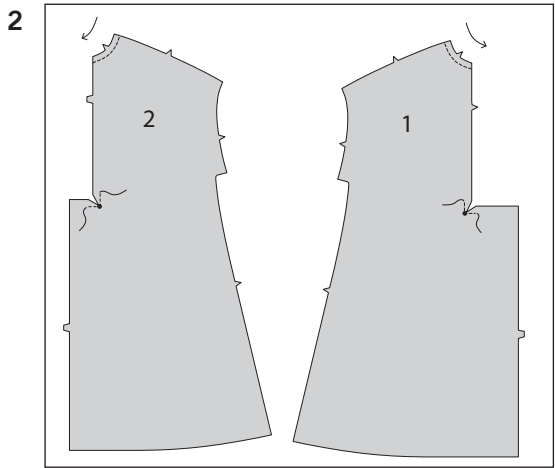
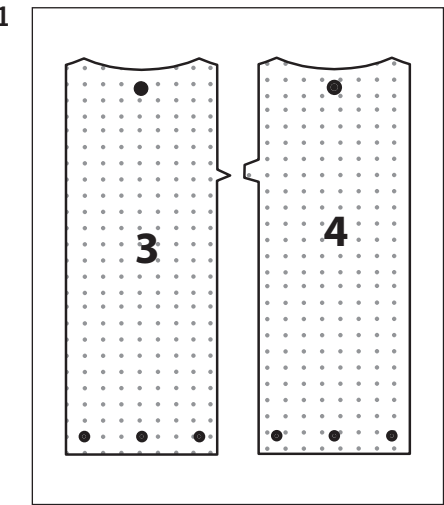
UNDERSTITCH - See Machine Stitches: “how to understitch” video.

PATTERN PIECES WILL BE IDENTIFIED BY NUMBERS THE FIRST TIME THEY ARE USED.
STITCH 5/8" (1.5CM) SEAMS WITH RIGHT SIDES TOGETHER UNLESS OTHERWISE STATED.

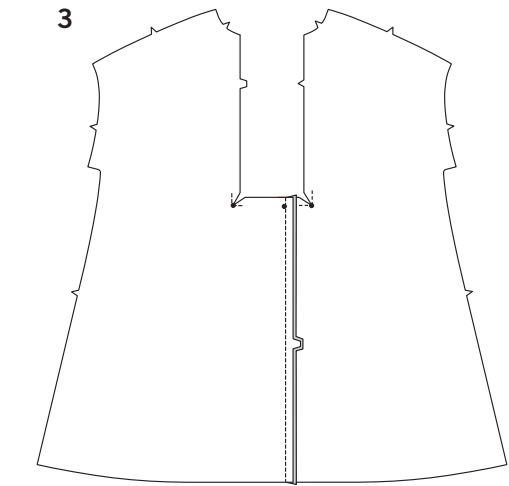
DRESS A, B, C

NOTE: The first View mentioned will be illustrated, unless otherwise indicated.

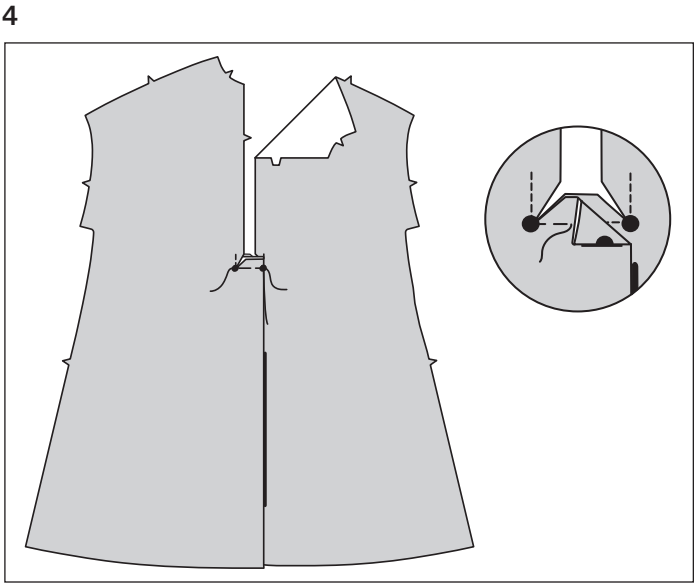
1. Fuse INTERFACING to WRONG side of each matching fabric section, following manufacturer’s directions.



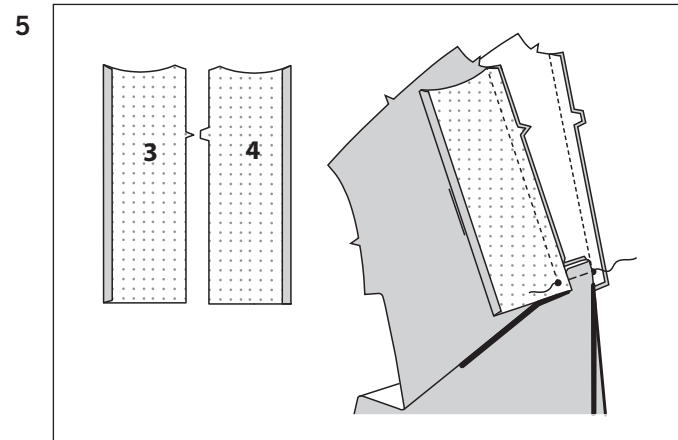
2. To **STAYSTITCH** neck edge of RIGHT FRONT (1) and LEFT FRONT (2), stitch 1/2" (1.3cm) from cut edge in direction of arrows. This stitching stays in permanently to prevent stretching on curved edges.
To **REINFORCE** corners, stitch along seam line for about 1" (2.5cm) on either side of small dot, stitching through dot. Clip seam allowance to stitching, being careful not to clip into stitching.
Staystitching will not be shown in the following ills.



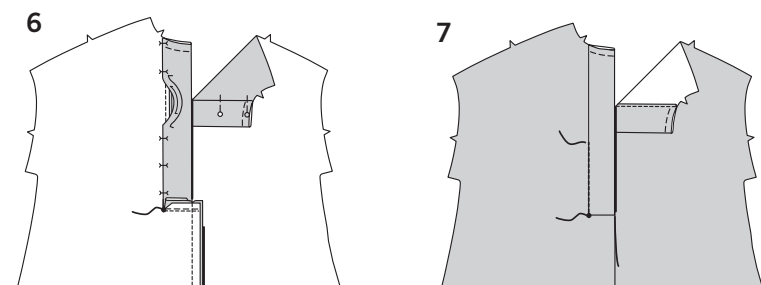
3. Stitch extension edges of left and right front together, matching notches and small dots.
Press seam toward right front.



4. To make pleat, on OUTSIDE, fold right front along foldline, matching centers front and small dots; press.
Baste across upper edge of pleat.
TIP: For a sharp pleat, baste pleat in place close to fold edge all the way down; remove basting before attaching facings to lower edge of dress.

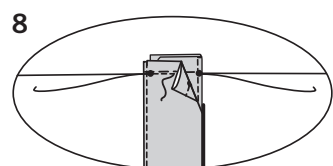


- 5.** Press under 1/2" (1.3cm) on long unnotched edge of RIGHT PLACKET (3) and LEFT PLACKET (4). With RIGHT sides together and raw edges even, pin right placket to right front, matching single notches and small dots. Stitch seam as far as small dot, back-stitching at small dot to reinforce. Stitch left placket to left front in same manner, matching double notches.



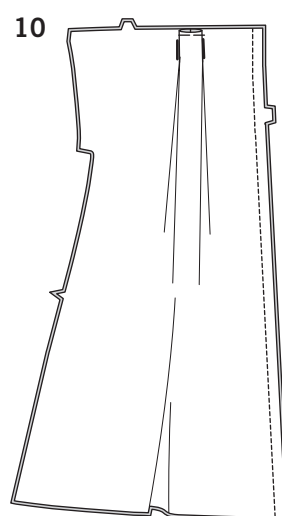
- 6.** Press opening seam toward placket, pressing placket out. Turn each placket to INSIDE along foldline; press. Pin pressed edge 1/8" (6mm) over seam, placing pins on the OUTSIDE, and being careful not to catch in seam allowances at end of opening.

- 7.** On OUTSIDE, **STITCH IN THE DITCH** or "groove" of the seam as far as small dot, catching in pressed edge on INSIDE. Baste upper edges of each placket together.

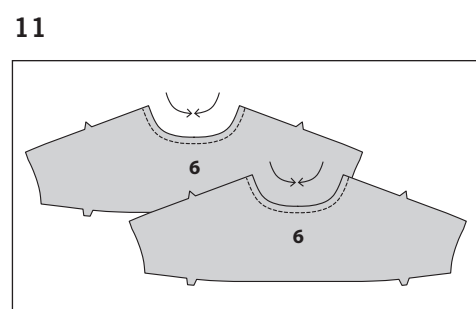


- 8.** On INSIDE, lap lower end of left placket over right, matching centers front and small dots, having edges even. Baste ends of placket, keeping front and placket free.

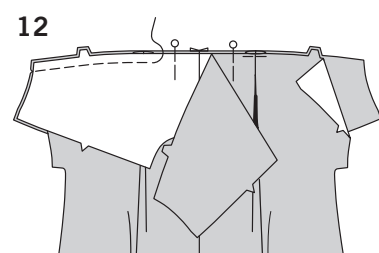
- 9.** To make pleat in each BACK (5) section, on OUTSIDE, fold back along solid lines. Bring folds to broken lines; pin. Baste across raw edges.



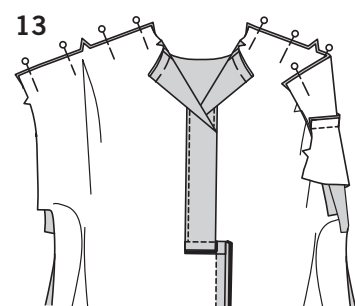
- 10.** Stitch center back seam of back sections.



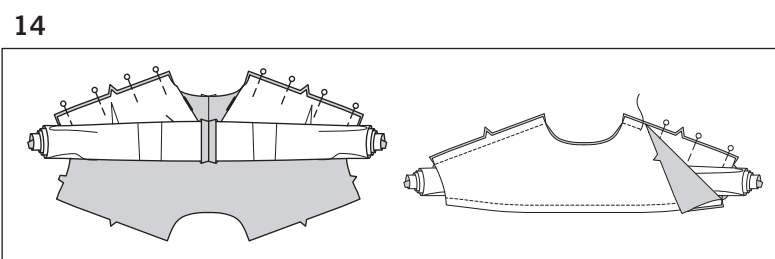
- 11.** **STAYSTITCH** neck edge of each YOKE BACK (6) section, in direction of arrows.



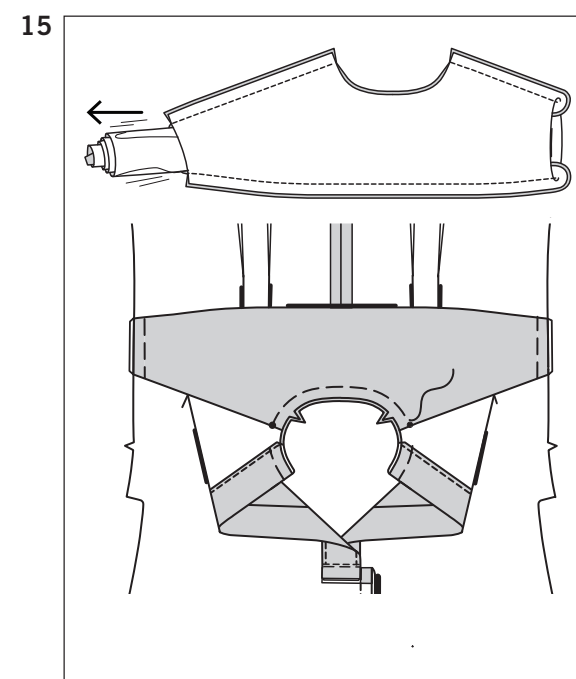
- 12.** With RIGHT sides together, pin one yoke section to back, having raw edges even. Pin RIGHT side of yoke facing to WRONG side of back, having raw edges even. Stitch through all thicknesses. Trim seam.



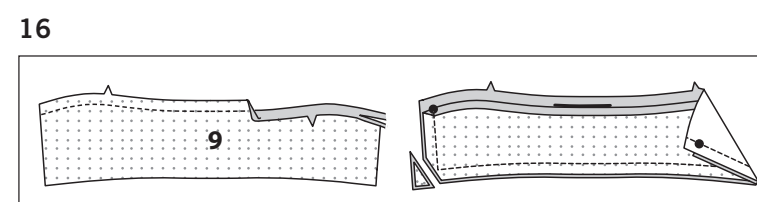
- 13.** Press yoke up, leaving facing down toward back, as shown. With RIGHT sides together, pin yoke to fronts at shoulder edges.



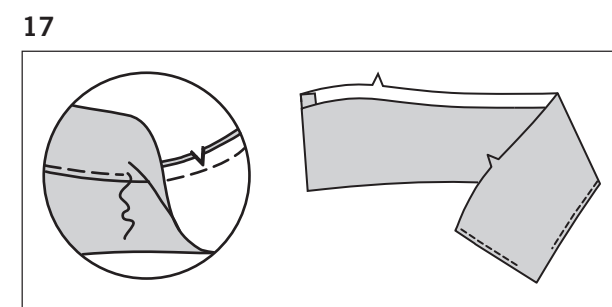
- 14.** Spread out front and back to full width and tightly roll together toward yoke, as shown. Bring the yoke facing up and pin shoulder edges together. (Rolled dress is between yoke layers.) Stitch through all thicknesses, being careful not to catch in rolled dress. Trim seams.



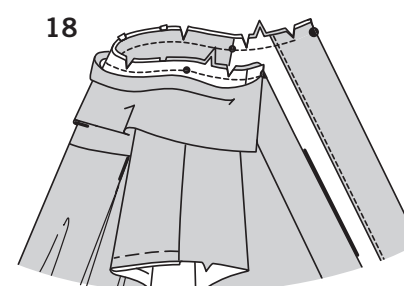
- 15.** Pull out rolled dress through one armhole opening, turning dress RIGHT side out. Press all yoke seams. Baste neck and armhole edges together.



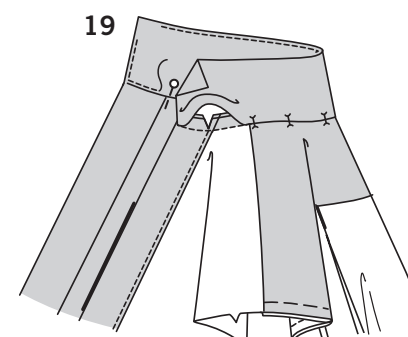
- 16.** To form a pressing guide, stitch notched edge of uninterfaced COLLAR (9) section along 5/8" (1.5cm) seam line. Press under along stitching guide; trim pressed seam allowance to 3/8" (1cm). The remaining collar section will be the facing. With RIGHT sides together and raw edges even, pin facing to collar, matching large dots. Stitch, leaving notched edges open. Trim seam and corners.



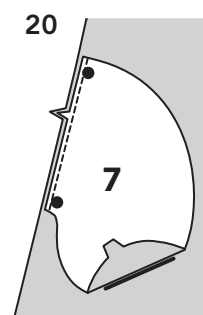
- 17.** **UNDERSTITCH** collar facing by pressing seam toward facing and stitching through facing and seam allowances close to seam, as far as possible. Turn collar; press.



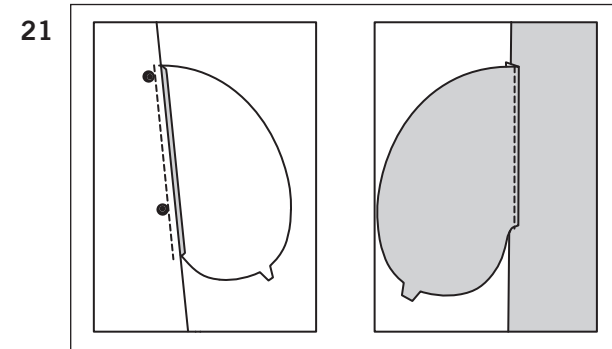
- 18.** Clip neck edge of dress to stay-stitching along curves. On OUTSIDE, pin collar facing to neck edge, matching centers back and large dots, placing small dots at shoulder seams. Stitch, being careful not to catch in pressed edge of collar. Trim seam; clip curves.



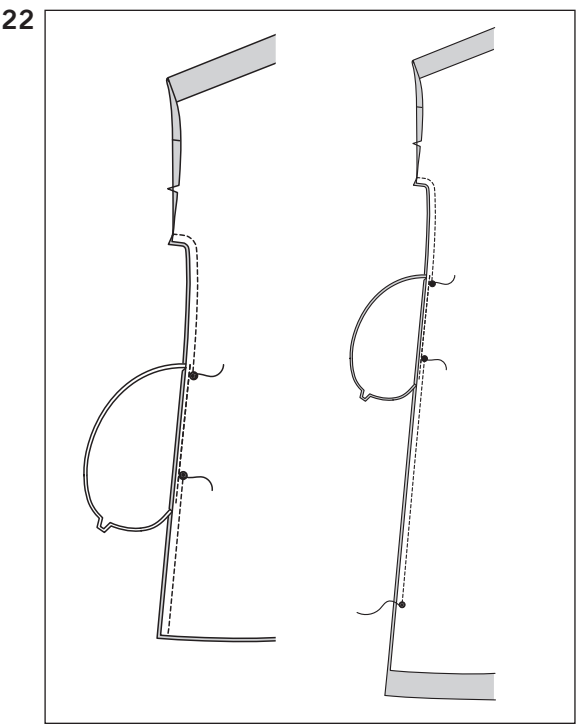
- 19.** Press seam toward collar. On INSIDE, pin pressed edge of collar over seam, placing pins on OUTSIDE. On OUTSIDE, **EDGE STITCH** collar close to seam, catching in pressed edge on INSIDE.



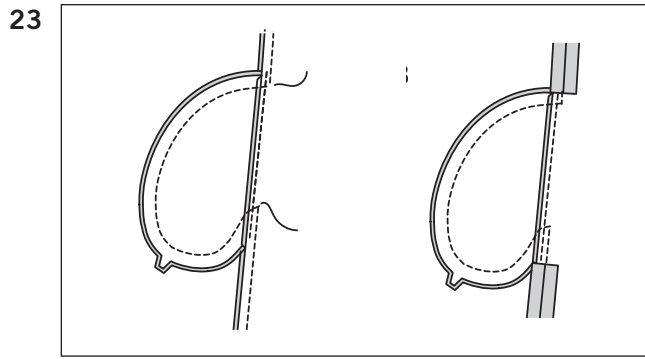
- 20.** Apply pockets to side edges of front and back as follows: With RIGHT sides together, pin POCKET (7) to garment, matching large dots, having raw edges even. Stitch in a 3/8" (1cm) seam.



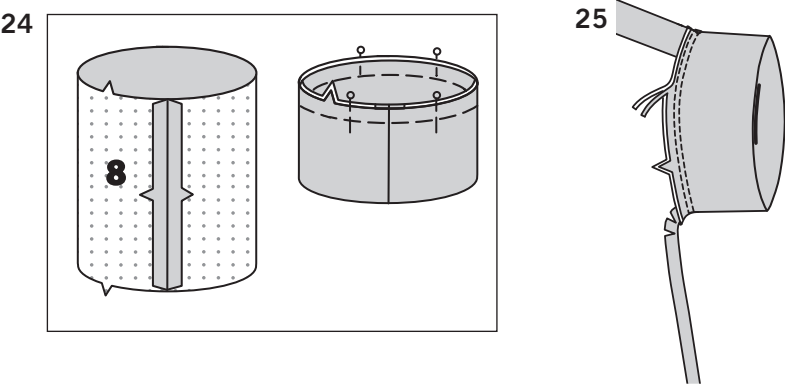
- 21.** Press seam toward pocket, pressing pocket out. **UNDERSTITCH** front pocket.



22. Pin front to back at side seams, matching large dots.
FOR VIEWS A, B:
Stitch side seams, leaving an opening between large dots; back-stitch at large dots to reinforce seam.
FOR VIEW C: Pin side seams, matching large dots. Stitch side seams above lower large dots, leaving an opening between upper large dots, and back-stitching at each large dot to reinforce seam.

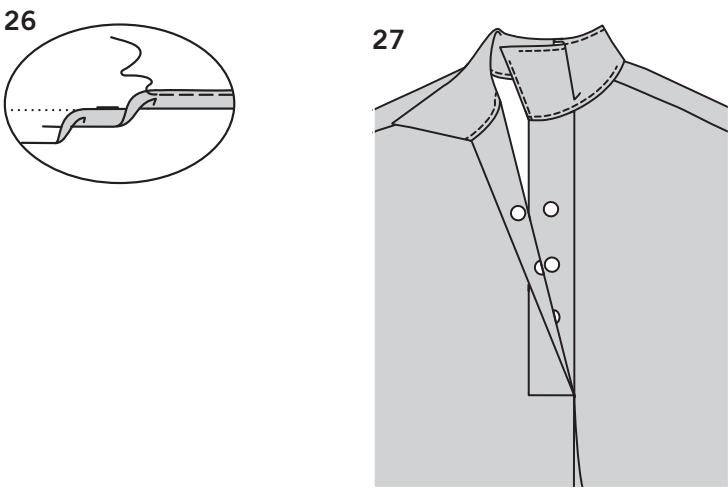


23. FOR ALL VIEWS:
Stitch pocket edges together between side seams. Clip back seam allowance at ends of pocket. Press seam open above and below clip. Press pocket toward front.



24. Stitch short ends of SLEEVE BAND (8), having RIGHT sides together. Fold band in half lengthwise, having WRONG sides together and raw edges even. Press. Baste raw edges together, matching seams.

25. With RIGHT sides together, stitch sleeve band to armhole edge of dress, matching notches and small dots. Stitch again 1/4" (6mm) away from first stitching within seam allowance. Trim close to second stitching, or if you prefer, finish with a zigzag or overlock stitch. Press sleeve band out, pressing seam toward dress.



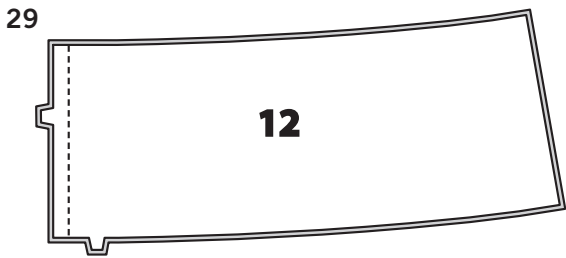
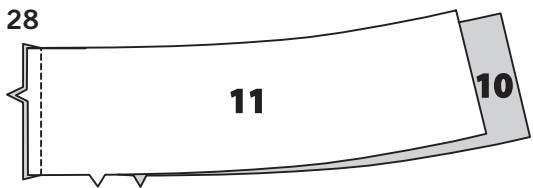
CONTINUE AS FOLLOWS FOR VIEWS A, B

26. To make a **NARROW HEM** on lower edges of dress, press under 5/8" (1.5cm) hem allowance. To form narrow hem, tuck under raw edge to meet crease; press. Stitch hem in place close to inner pressed edge.

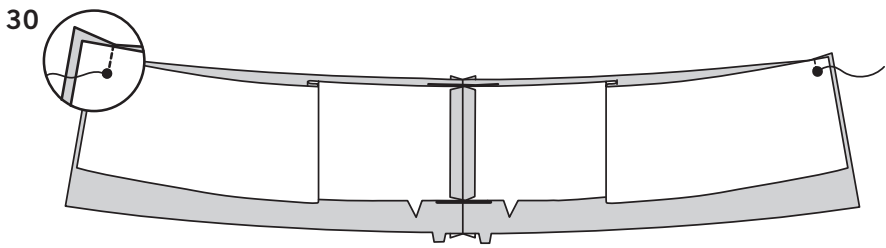
27. Apply three sets of snaps to plackets at small dots, sewing the socket halves to the left placket on the OUTSIDE and the knob halves to the right placket on the INSIDE.

CONTINUE AS FOLLOWS FOR VIEW C

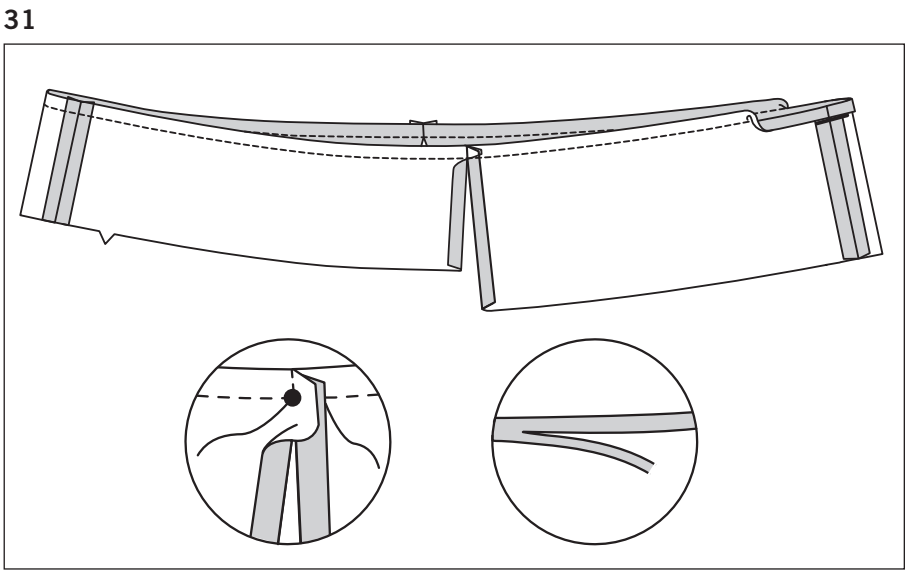
28. Stitch RIGHT FRONT FACING (10) to LEFT FRONT FACING (11) at front edges, matching notches.



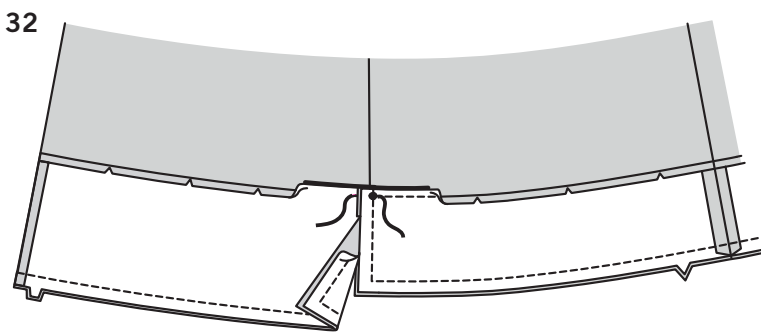
29. Stitch BACK (12) sections together at center back seam.



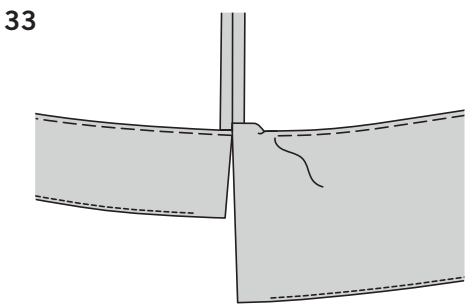
30. Pin front to back at sides, matching small dots. Stitch seam above large dot, as shown.



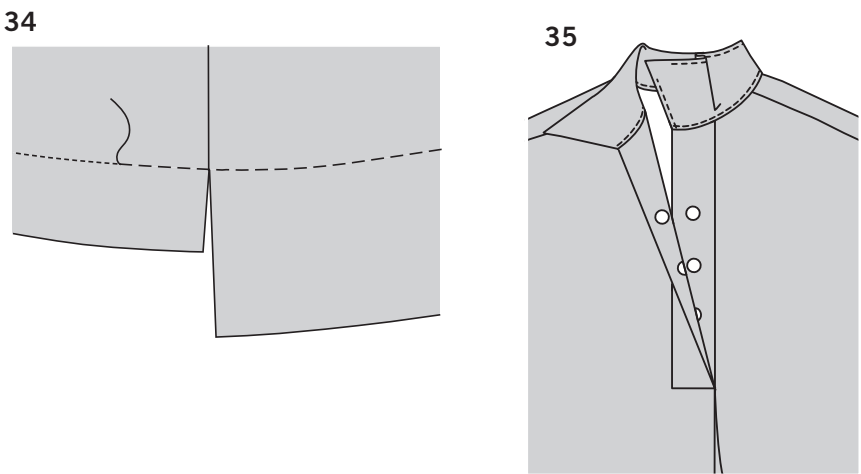
31. To form a pressing guide, machine stitch 5/8" (1.5 cm) from upper unnotched edge, breaking stitching at dots. Press under upper edge along stitching guide, clipping curve to stitching where necessary. Trim pressed seam allowance to 3/8" (1cm). Avoid clipping near side seams.



32. Open out pressed edge of facing at sides, and with RIGHT sides together, pin facing to lower edge of dress, matching notches and large dots. Stitch side opening and lower edges, breaking and reinforcing stitches at large dots. Trim seam and corners; clip curves where necessary.



33. UNDERSTITCH facing as far as possible. Turn facing to INSIDE. Turn under raw edge above stitching; press. Baste close to pressed edge.



34. On OUTSIDE, topstitch along basting.

35. Apply three sets of snaps to plackets at small dots, sewing the socket halves to the left placket on the OUTSIDE and the knob halves to the right placket on the INSIDE.