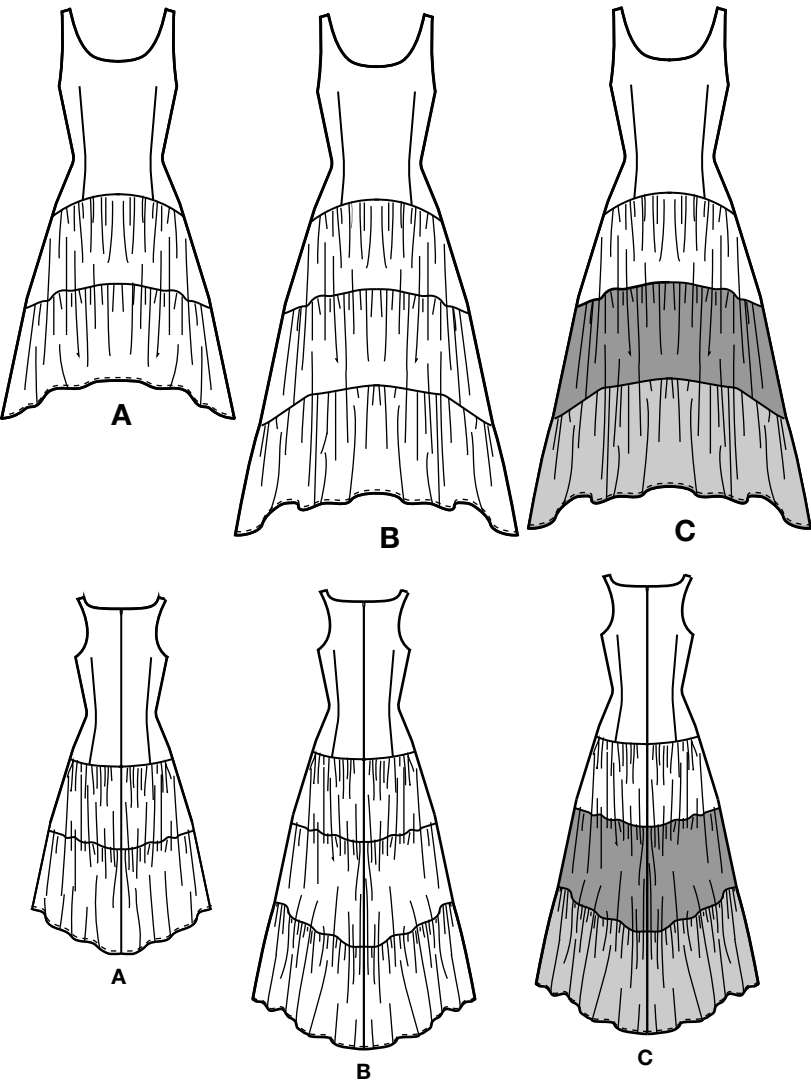
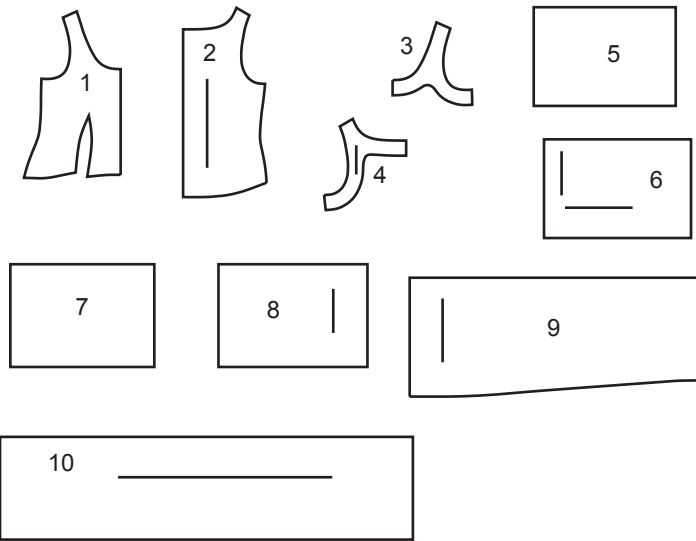


Thank you for purchasing this Simplicity pattern.  
We made every effort to provide you with a high quality product.



10 PIECES



- 1 BODICE FRONT-A,B,C  
2 BODICE BACK - A,B,C  
3 FRONT FACING - A,B,C  
4 BACK FACING - A,B,C  
5 SKIRT UPPER FRONT - A,B,C  
6 SKIRT UPPER BACK - A,B,C  
7 SKIRT FRONT - A,B,C  
8 SKIRT SIDE FRONT - A,B,C  
9 SKIRT BACK - A,B,C  
10 RUFFLE - B,C



www.simplicity.com



info@simplicity.com



1-888-588-2700

## General Directions

### The Pattern

- SYMBOLS**
- ↔ GRAIN LINE Place on straight grain of fabric parallel to selvage
- ⇓ PLACE SOLID LINE on fold of fabric.
- CENTER FRONT OR BACK of garment.
- ▽▽▽ NOTCHES
- ○ DOTS
- CUTTING LINE
- == LENGTHEN OR SHORTEN LINES

SEAM ALLOWANCE: 5/8" (1.5cm) unless otherwise stated is included but not printed on MULTI-SIZE PATTERNS. Mark your size with colored felt tip pen. See chart on tissue for how to use MULTI-SIZE PATTERNS.

- ADJUST IF NEEDED**
- Make adjustments before placing pattern on fabric.
- TO LENGTHEN:** Cut pattern between lengthen or shorten lines. Spread pattern evenly, the amount needed and tape to paper.
- TO SHORTEN:** At lengthen or shorten lines, make an even pleat taking up amount needed. Tape in place.

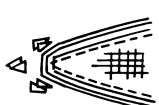
When lengthen or shorten lines are not given, make adjustments at lower edge of pattern.

### Sewing

- SEW garment following **Sewing Directions**.
- PIN or machine-baste seams matching notches.
- STITCH 5/8" (1.5 cm) seams unless otherwise stated.
- PRESS seams open unless otherwise indicated clipping when necessary so seams will lie flat.
- TRIM seams to reduce bulk, as shown below.



Trim enclosed seams into layers



Trim corners



Clip inner curves



Notch outer curves

### Cutting/Marking

**BEFORE CUTTING:**

PRESS pattern pieces with a warm dry iron. PRE-SHRINK fabric by pre-washing washables or steam-pressing non-washables.

CIRCLE your cutting layout.

PIN pattern to fabric as shown in Cutting Layouts.

- FOR DOUBLE THICKNESS: Fold fabric with RIGHT sides together.
- FOR SINGLE THICKNESS: Place fabric RIGHT side up.
- FOR PILE, SHADED OR ONE WAY DESIGN FABRICS: Use "with nap" layouts

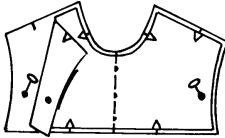
**AFTER CUTTING:**

Transfer markings to WRONG side of fabric before removing pattern. Use pin and chalk method or dressmaker's tracing paper and wheel.

**To Quick Mark:**

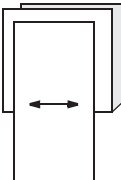
- Snip edge of fabric to mark notches, ends of fold lines and center lines.

- Pin mark dots.

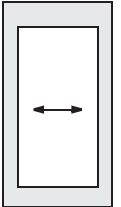


### SPECIAL CUTTING NOTES

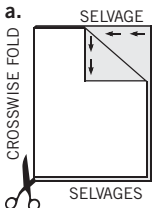
- ★ If layout shows a piece extending past fold, cut out all pieces except piece that extends.



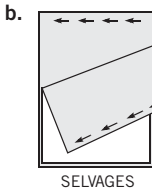
Open out fabric to single thickness. Cut extending piece on RIGHT side of fabric in position shown.



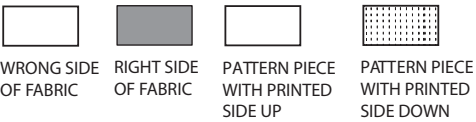
- ✱ Mark small arrows along both selvages indicating direction of nap or design. Fold fabric crosswise with RIGHT sides together, and cut along fold (a).



- Turn one fabric layer around so arrows on both layers go in the same direction. Place RIGHT sides together (b).



## Cutting Layouts

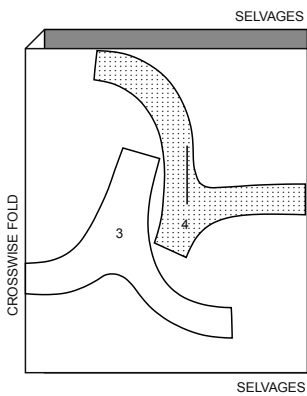


POSITION OF PATTERN PIECES MAY VARY SLIGHTLY ACCORDING TO YOUR PATTERN SIZE

### INTERFACING A,B,C

USE PIECES 3 4

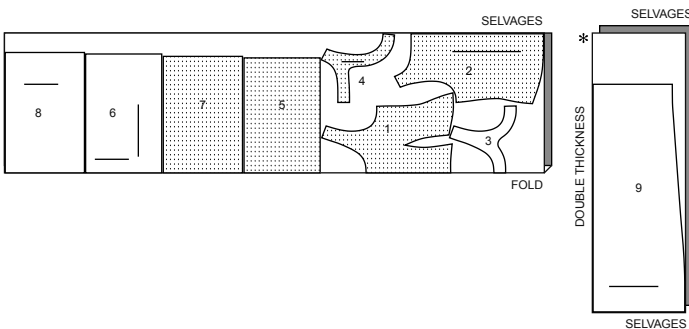
20" (51CM)  
ALL SIZES



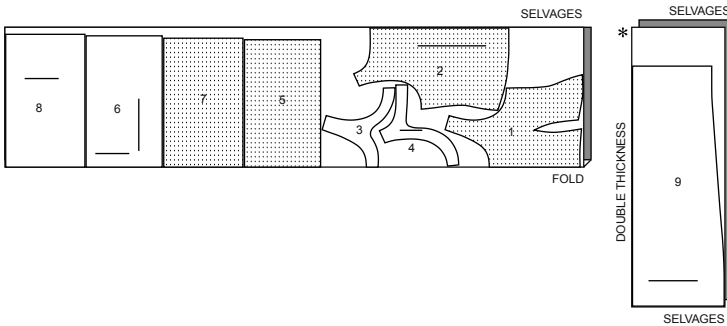
### DRESS A

USE PIECES 1 2 3 4 5 6 7 8 9

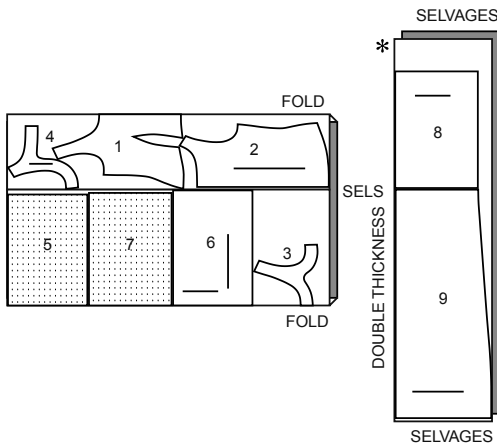
45" (115CM)  
WITH NAP  
SIZES 4 6 8  
10 12 14



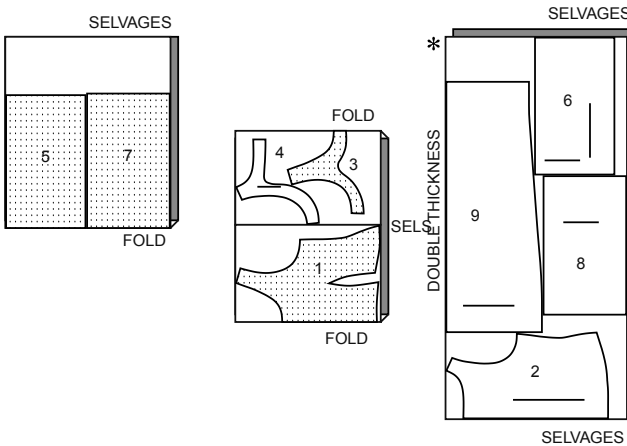
45" (115CM)  
WITH NAP  
SIZES 16 18 20 22



60" (150CM)  
WITH NAP  
SIZES 4 6



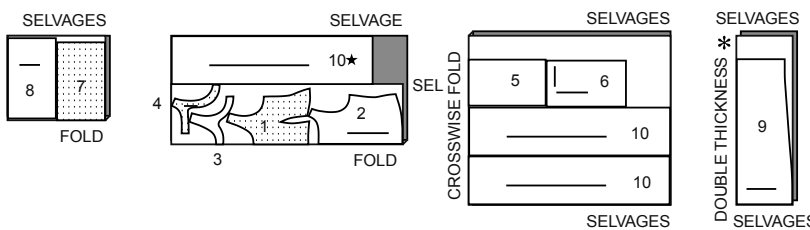
60" (150CM)  
WITH NAP  
SIZES 8 10 12 14 16 18 20 22



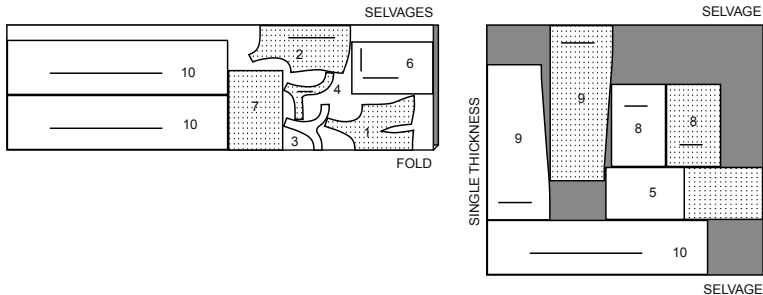
### DRESS B

USE PIECES 1 2 3 4 5 6 7 8 9 10

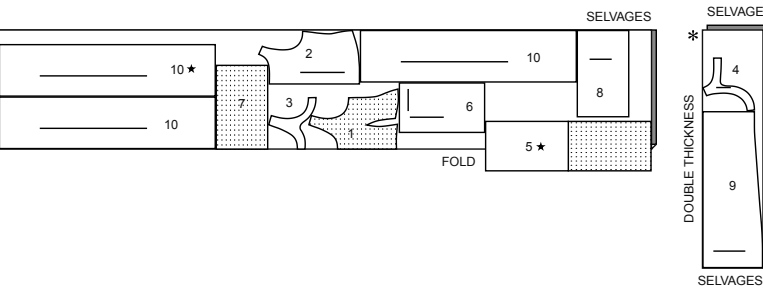
45" (115CM)  
WITH NAP  
ALL SIZES



60" (150CM)  
WITH NAP  
SIZES 4 6 8 10 12 14



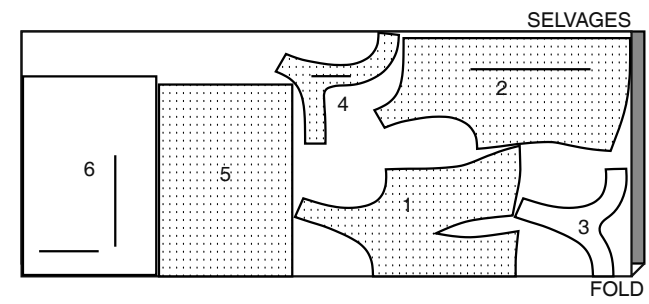
60" (150CM)  
WITH NAP  
SIZES 16 18 20 22



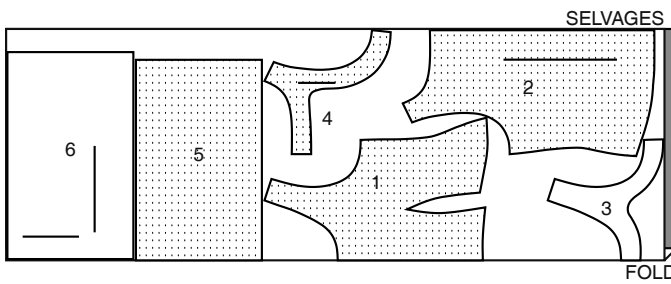
DRESS C

USE PIECES 1 2 3 4 5 6

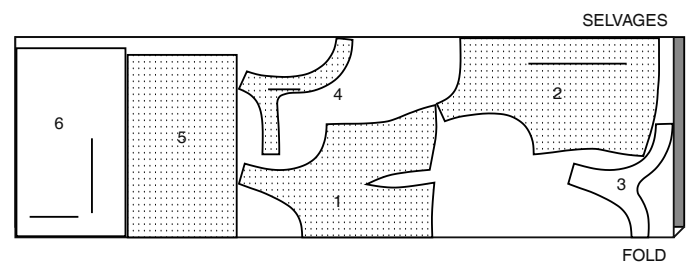
45" (115CM)  
WITH NAP  
SIZES 4 6 8 10



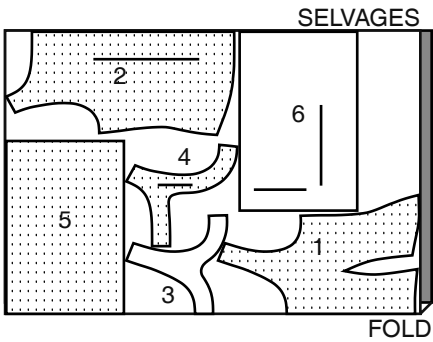
45" (115CM)  
WITH NAP  
SIZES 12 14 16 18



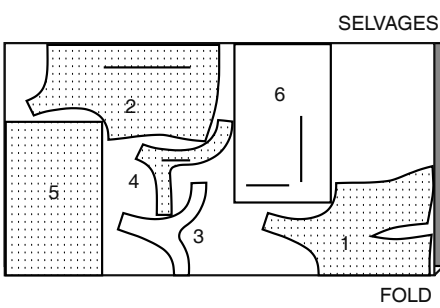
45" (115CM)  
WITH NAP  
SIZES 20 22



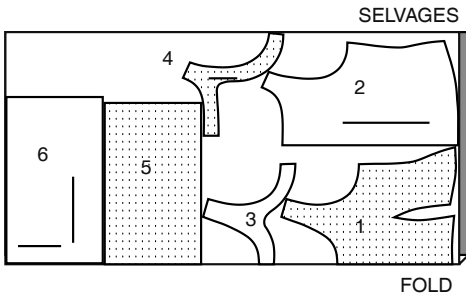
60" (150CM)  
WITH NAP  
SIZES 4 6 8 10 12



60" (150CM)  
WITH NAP  
SIZES 14 16 18

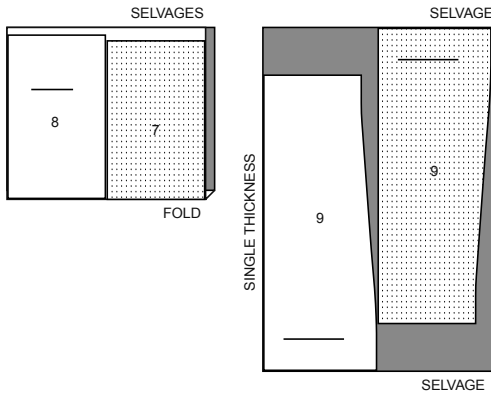


60" (150CM)  
WITH NAP  
SIZES 20 22

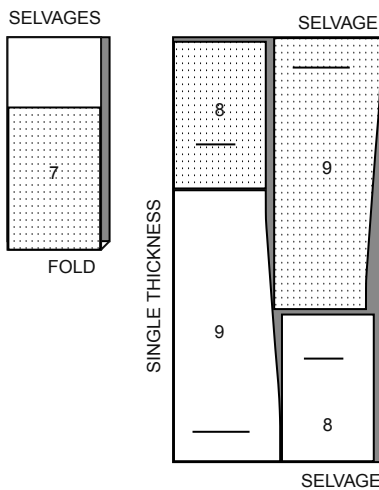


CONTRAST 1 (SKIRT FRONT, SKIRT SIDE  
FRONT, SKIRT BACK)  
USE PIECES 7 8 9

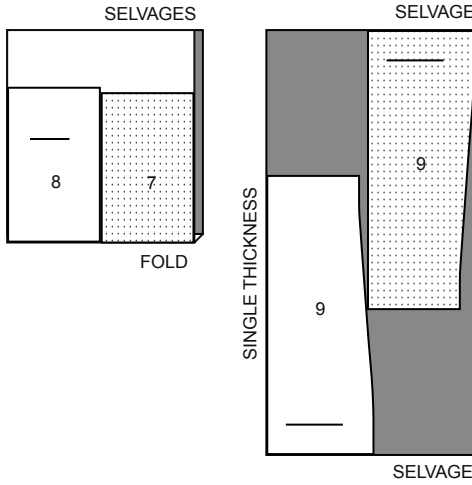
45" (115CM)  
WITH NAP  
ALL SIZES



60" (150CM)  
WITH NAP  
SIZES 4 6 8 10 12 14 16 18

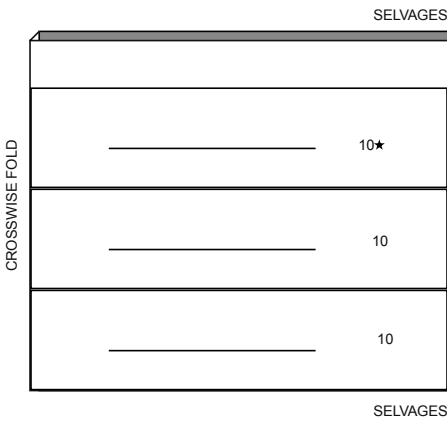


60" (150CM)  
WITH NAP  
SIZES 20 22



CONTRAST 2 (RUFFLE)  
USE PIECES 10

45,60" (115,150CM)  
WITH NAP  
ALL SIZES



Sewing Directions

FABRIC  
KEY



Read **General Directions** on page 1 before you begin.  
Sewing methods in **BOLD TYPE** have Sewing Tutorial Video available.  
Scan **QR CODE** to watch videos:

**DART** - See **Darts**: “sewing a double pointed dart” video.

**FINISH** - See **Seams**: “how to finish seam allowances” video.

**GATHER** - See **Gathering**: “sewing two row gathers” video.

**INVISIBLE ZIPPER** - See **Zipper**: “sewing an invisible zipper” video.

**NARROW HEM** - See **Hems**: “sewing narrow hems” video.

**SLIPSTITCH** – See **Hand Stitching**: “how to slip stitch” video.

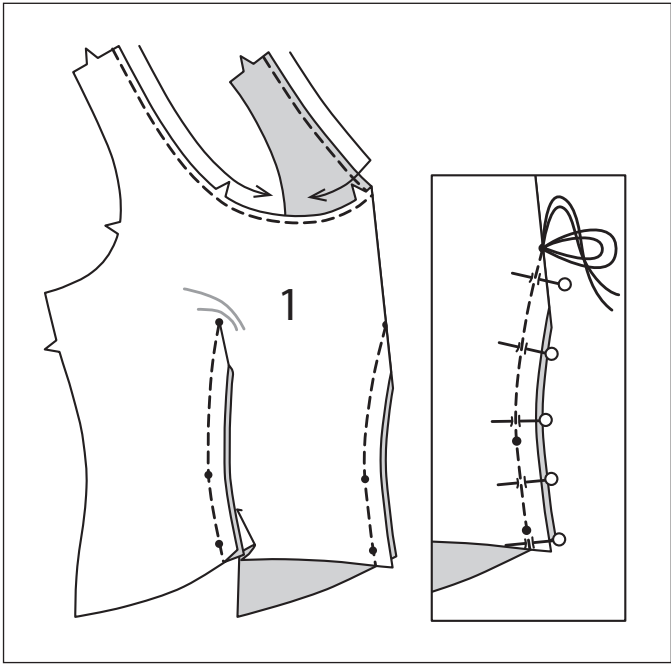
**UNDERSTITCH** – See **Machine Stitches**: “how to understitch” video.

SEWING TUTORIALS



Build your skills viewing short, easy-to-follow videos at  
simplicity.com/sewingtutorials

1



PATTERN PIECES WILL BE IDENTIFIED BY NUMBERS THE  
FIRST TIME THEY ARE USED.

STITCH 5/8" (1.5CM) SEAMS WITH RIGHT SIDES  
TOGETHER UNLESS OTHERWISE STATED.

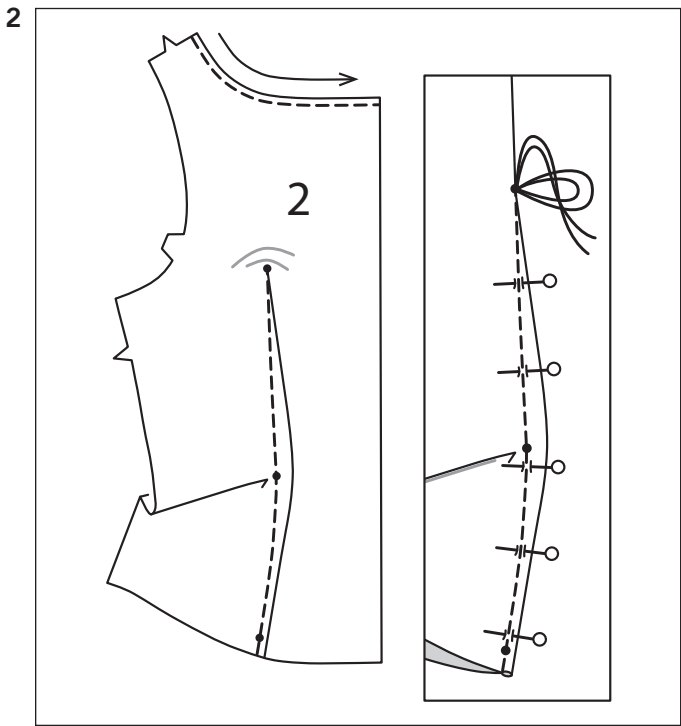
DRESS A, B, C

**NOTE:** *The first view mentioned will be shown, unless otherwise  
mentioned.*

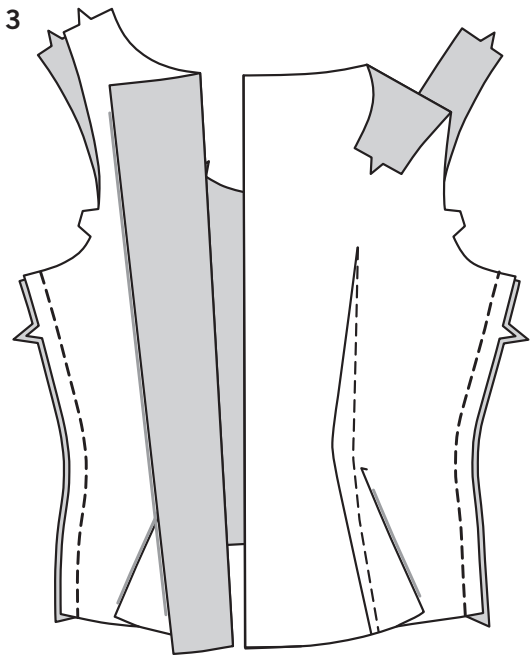
FRONT AND BACK

**1.** To staystitch neck edge of BODICE FRONT (1), stitch 1/4”(6mm)  
from raw edge in direction of arrows. To stitch dart seam in  
bodice front, with RIGHT sides together, pin broken lines together  
carefully matching small dots. Stitch the dart seam from outer  
edge to point.

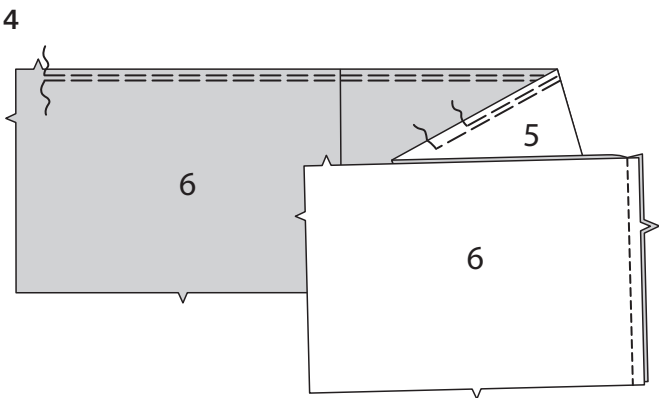
**TIP-**To prevent a “bubble” at the point, make the last few stitches  
right on the fold and leave the thread ends long enough to tie a  
knot. DO NOT back-stitch at the point. Press dart toward center.



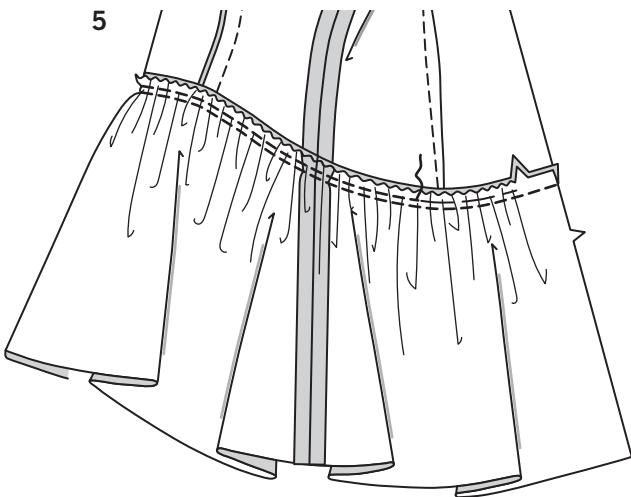
2. To staystitch neck edge of BODICE BACK (2) stitch 1/4"(6mm) from raw edge in direction of arrow. Stitch a **DOUBLE POINTED DART** in bodice back stitching from center dots out to points.



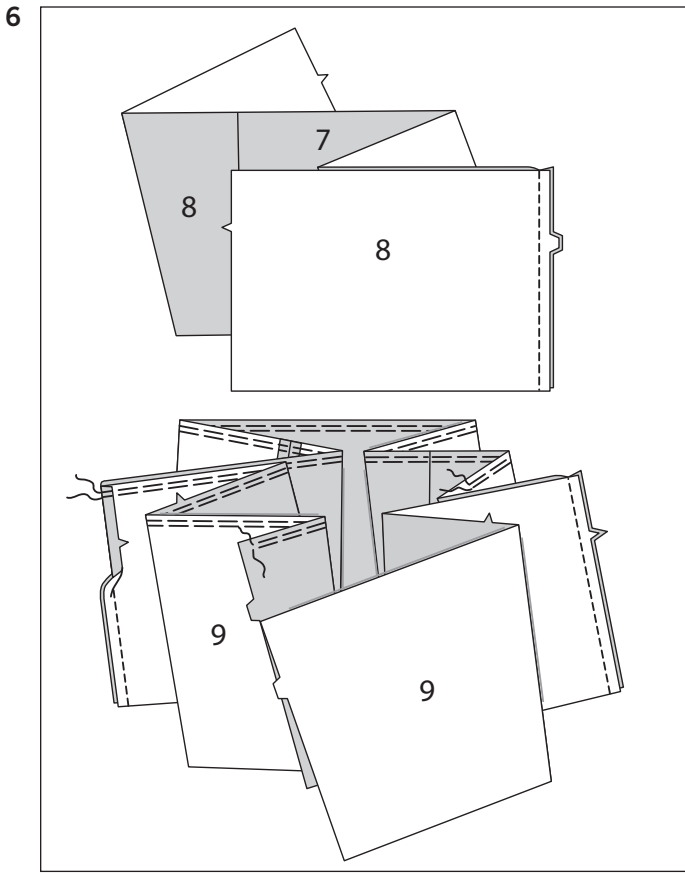
3. Stitch bodice front to bodice back at sides.



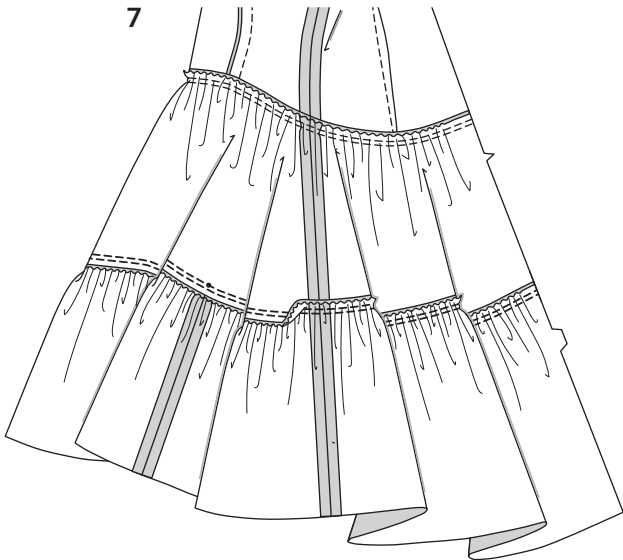
4. For upper skirt, stitch SKIRT UPPER FRONT (5) to SKIRT UPPER BACK (6) at sides matching notches. **GATHER** upper edges between back notches.



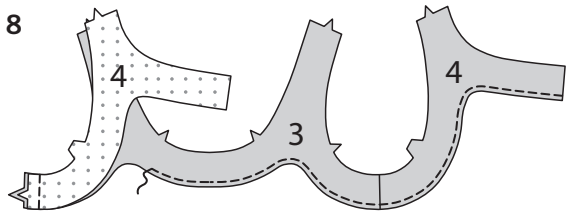
5. Pin upper edge of upper skirt to lower edge of bodice, **RIGHT** sides together, matching centers, notches and side seams. Adjust gathers evenly. Baste. Stitch. Stitch again 1/4"(6mm) away in seam allowance. Press seam toward bodice.



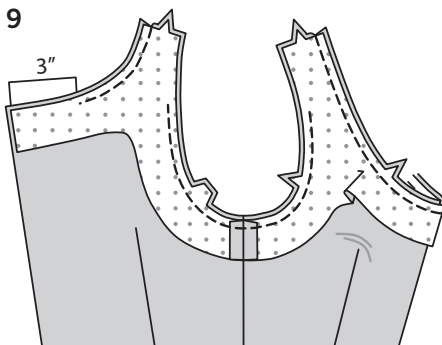
6. Stitch SKIRT SIDE FRONT (8) to side edges of SKIRT FRONT (7), matching notches. Stitch SKIRT BACK (9) to side edges of skirt side front, matching notches. **GATHER** upper edge, stopping stitching 3/4"(2cm) from back edges, breaking stitching at side seams.



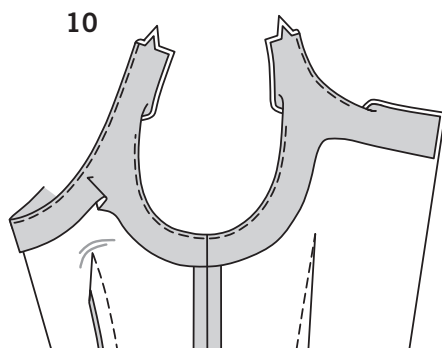
7. Pin skirt to lower edge of upper skirt, **RIGHT** sides together, matching center fronts, side seams, and side front seam to small dot, having back edges even. Adjust gathers evenly. Baste. Stitch. Stitch again 1/4"(6mm) away in seam allowances. Turn seam up. Press.



8. Fuse INTERFACING to **WRONG** sides of FRONT FACING (3) and BACK FACING (4). Stitch front facing to back facing at sides. **FINISH** un-notched edge.

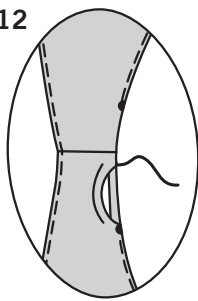
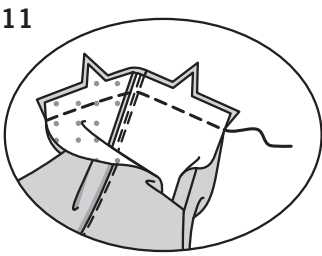


9. With **RIGHT** sides together, pin facing to dress, matching centers and notches, having raw edges even. Stitch neck edges of front and back stopping 3"(7.5cm) from back opening edges, using a 3/8"(1cm) seam. Stitch armhole edges, leaving open 3"(7.5cm) below upper edge of armhole, using a 3/8"(1cm) seam. **UNDERSTITCH** facing as far as possible, stopping 3-1/2"(9cm) from back opening edges.



10. Turn facing to **INSIDE**. Press.





- 11.** Open out facing at shoulders. Pin shoulder edges together along with shoulder edges of facing. Stitch in one continuous seam.
- 12.** Turn down facing, turning in remainder of seam allowance on armhole edges, as shown. Press. **SLIPSTITCH** armhole edges.

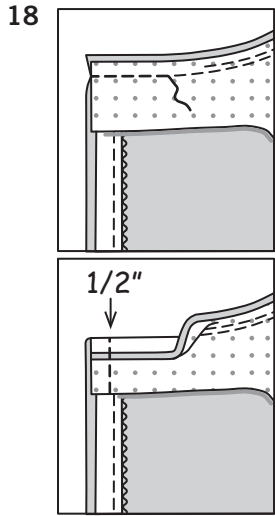
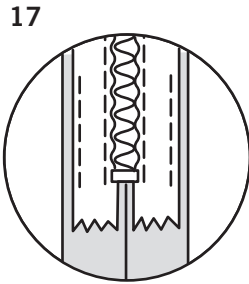
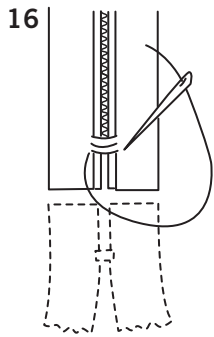
INVISIBLE ZIPPER

**NOTE:** *Stitch the invisible zipper using an invisible zipper foot. If the zipper is longer than the zipper opening, adjust after the zipper is inserted. For a How to video, see ZIPPER: “sewing an invisible zipper “.*

- 13.** Open the zipper and press the tape using a cool iron. Keep the free upper edges of back facing out of the way. On OUTSIDE, pin RIGHT side of the zipper face down on the RIGHT side of the zipper opening. Have the coil along the seam line, the tape within the seam allowance and the top stop 3/4”(2cm) below upper edge, as shown. Hand-baste along center of the tape. Position zipper foot at the top of the zipper with RIGHT groove of the foot over coil. Stitch along tape to the notch. Back-stitch to reinforce.

- 14.** Pin the remaining half of the zipper to the LEFT side of the zipper opening in same manner. Make sure the upper and lower edges of the garment are even. Hand-baste along the center of the tape. Position zipper foot at the top of the zipper with LEFT groove over the coil. Stitch along tape to the notch. Back-stitch to reinforce.

- 15.** Close zipper and check that it is invisible from the OUTSIDE. Pull the free ends of the zipper tape away from the seam allowance. Pin remaining center back seam together below zipper. Position zipper foot all the way to the LEFT so the needle goes down through the outer notch of the foot. Start stitching seam 1/4”(6mm) above lowest stitch and slightly to the LEFT. Stitch seam for about 3”(7.5cm). Stitch remainder of seam using your regular presser foot.



- 16.** If the zipper is longer than the opening, using a strong thread, hand-sew a few small stitches across ends of coils at end of opening. Trim away lower end of zipper tape to within 5/8”(1.5cm) of hand-stitches.
- 17.** If you prefer, open out each seam allowance at end of zipper and stitch tape to seam allowance.
- 18.** Open out the back opening edges of dress, rolling the zipper teeth away from the opening edge. Turn back facing to OUTSIDE. With RIGHT sides together, pin back and back neck edges of dress and facing together. Stitch remaining back neck edges, connecting to previous stitching. Trim neck seam. Stitch across facing 1/2”(1.3cm) from back edges, keeping zipper teeth free. Trim corner. Do not trim center back edges.

- 19.** Turn facing to INSIDE. Press.

FINISHING

VIEW A

- 20.** Make a 5/8”(1.5cm) **NARROW HEM** on lower edge of dress.

VIEWS B, C

- 21.** Stitch ends of RUFFLE (10) sections together, matching notches forming a tube. Using pins, mark one seam as center back. Fold ruffle in half along center back seam and mark center front. Bring center front to center back and mark sides. **GATHER** upper edge of ruffle, breaking stitching at markings for sides.

- 22.** Make a 5/8”(1.5cm) **NARROW HEM** on lower edge of ruffle.

- 23.** Pin upper edge of ruffle to lower edge of dress, RIGHT sides together, matching markings to centers and side seams. Adjust gathers evenly. Stitch. Stitch again 1/4”(6mm) away in seam allowances. Turn seam up.

