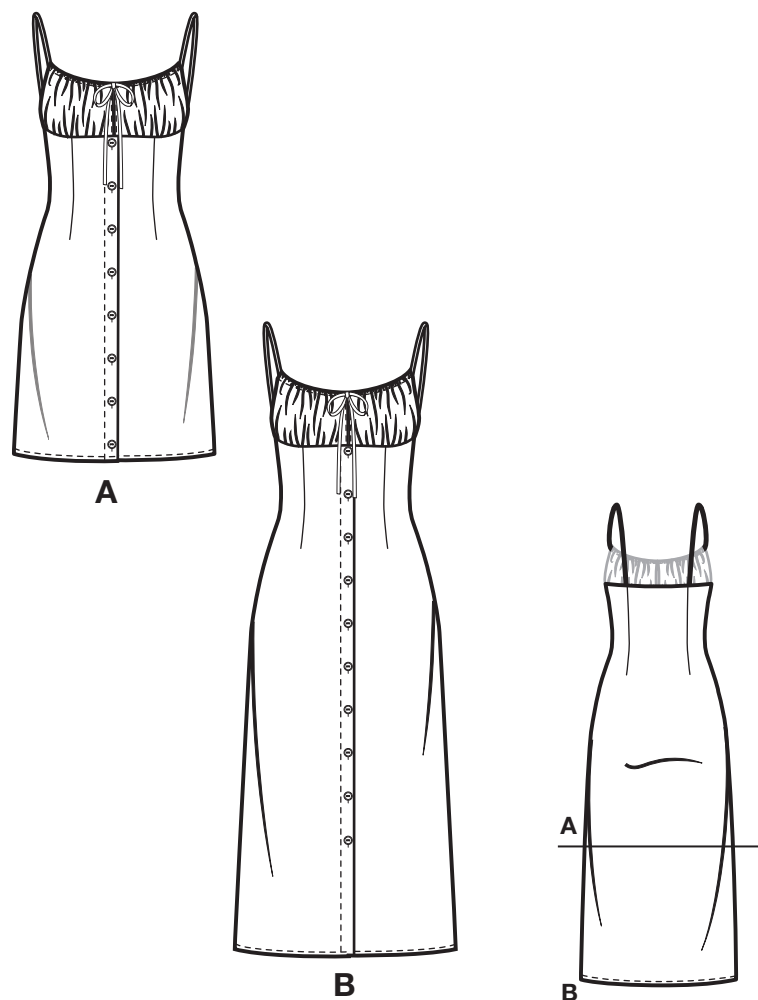
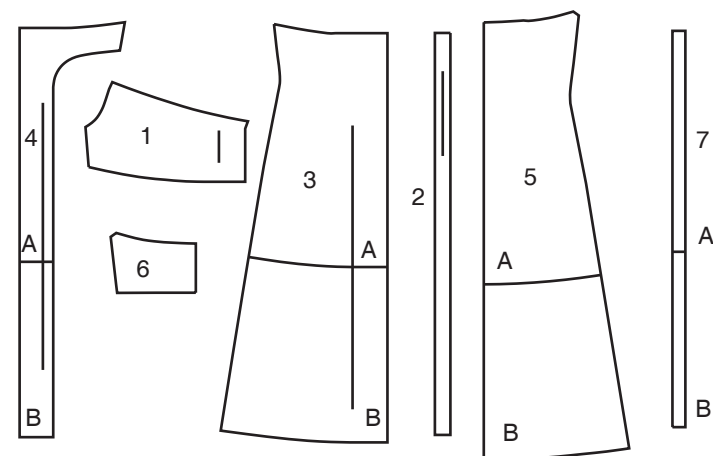


Simplicity®

Thank you for purchasing this Simplicity pattern. We made every effort to provide you with a high quality product.



7 PIECES



- 1 Bodice Front-A,B
- 2 Strap-A,B
- 3 Front-A,B
- 4 Front Facing-A,B
- 5 Back-A,B
- 6 Back Facing-A,B
- 7 Buttonhole Guide-A,B

General Directions

The Pattern

- SYMBOLS**
- GRAIN LINE: Place on straight grain of fabric parallel to selvage
 - PLACE SOLID LINE on fold of fabric.
 - CENTER FRONT OR BACK of garment.
 - NOTCHES
 - DOTS
 - CUTTING LINE
 - LENGTHEN OR SHORTEN LINES

ADJUST IF NEEDED
Make adjustments before placing pattern on fabric.

TO LENGTHEN:
Cut pattern between lengthen or shorten lines. Spread pattern evenly, the amount needed and tape to paper.

TO SHORTEN:
At lengthen or shorten lines, make an even pleat taking up amount needed. Tape in place.

SEAM ALLOWANCE: 5/8" (1.5cm) unless otherwise stated is included but not printed on MULTI-SIZE PATTERNS. Mark your size with colored felt tip pen. See chart on tissue for how to use MULTI-SIZE PATTERNS.

When lengthen or shorten lines are not given, make adjustments at lower edge of pattern.

Cutting/Marking

BEFORE CUTTING:
PRESS pattern pieces with a warm dry iron. PRE-SHRINK fabric by pre-washing washables or steam-pressing non-washables.

CIRCLE your cutting layout.

PIN pattern to fabric as shown in Cutting Layouts.

• FOR DOUBLE THICKNESS: Fold fabric with RIGHT sides together.

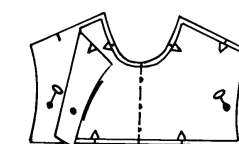
• FOR SINGLE THICKNESS: Place fabric RIGHT side up.

• FOR PILE, SHADED OR ONE WAY DESIGN FABRICS: Use "with nap" layouts

AFTER CUTTING:
Transfer markings to WRONG side of fabric before removing pattern. Use pin and chalk method or dressmaker's tracing paper and wheel.

To Quick Mark:

- Snip edge of fabric to mark notches, ends of fold lines and center lines.
- Pin mark dots.

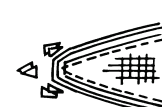


Sewing

- SEW garment following **Sewing Directions**.
- PIN or machine-baste seams matching notches.
- STITCH 5/8" (1.5 cm) seams unless otherwise stated.
- PRESS seams open unless otherwise indicated clipping when necessary so seams will lie flat.
- TRIM seams to reduce bulk, as shown below.



Trim enclosed seams into layers



Trim corners



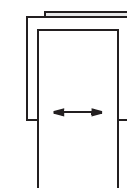
Clip inner curves



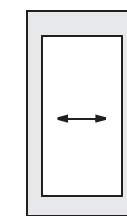
Notch outer curves

SPECIAL CUTTING NOTES

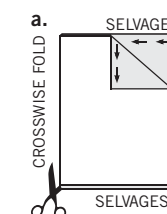
★ If layout shows a piece extending past fold, cut out all pieces except piece that extends.



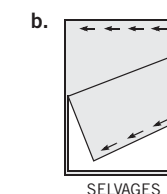
Open out fabric to single thickness. Cut extending piece on RIGHT side of fabric in position shown.



✱ Mark small arrows along both selvages indicating direction of nap or design. Fold fabric crosswise with RIGHT sides together, and cut along fold (a).



Turn one fabric layer around so arrows on both layers go in the same direction. Place RIGHT sides together (b).



Cutting Layouts

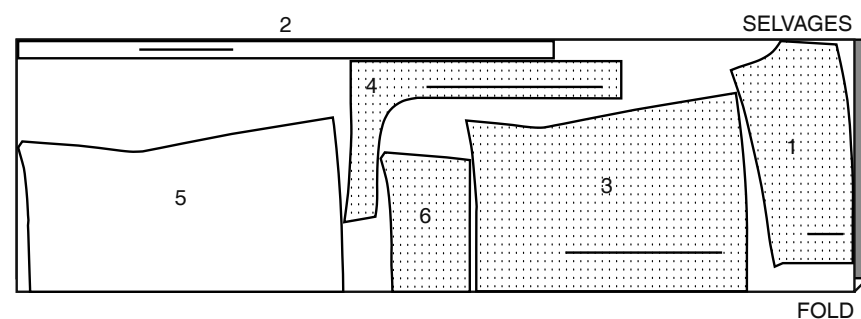
- WRONG SIDE OF FABRIC
- RIGHT SIDE OF FABRIC
- PATTERN PIECE WITH PRINTED SIDE UP
- PATTERN PIECE WITH PRINTED SIDE DOWN
- ★ SEE SPECIAL CUTTING NOTES

POSITION OF PATTERN PIECES MAY VARY SLIGHTLY ACCORDING TO YOUR PATTERN SIZE

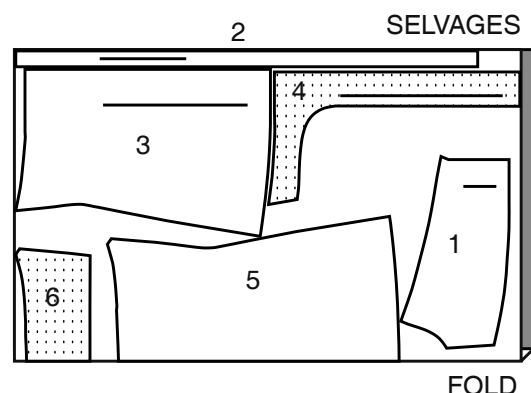
DRESS A

USE PIECES 1 2 3 4 5 6

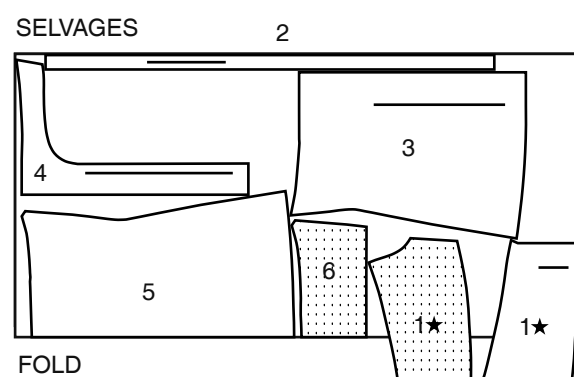
45" (115CM) WITH NAP ALL SIZES



60" (150CM) WITH NAP SIZES 8 10 12 14 16 18 20



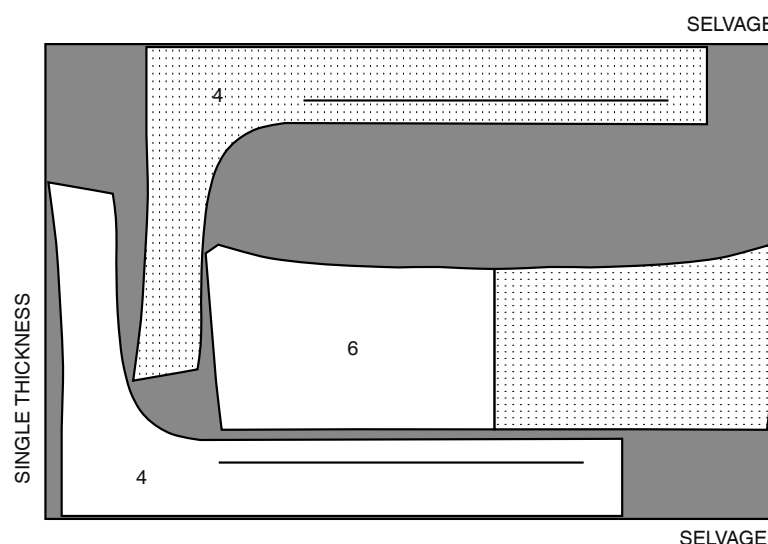
60" (150CM) WITH NAP SIZES 22 24 26



INTERFACING A

USE PIECES 4 6

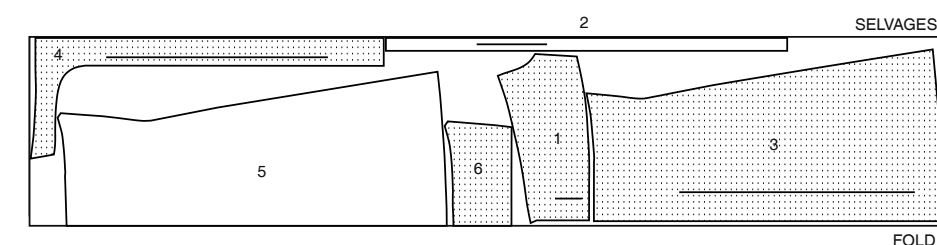
20" (51CM) WITHOUT NAP ALL SIZES



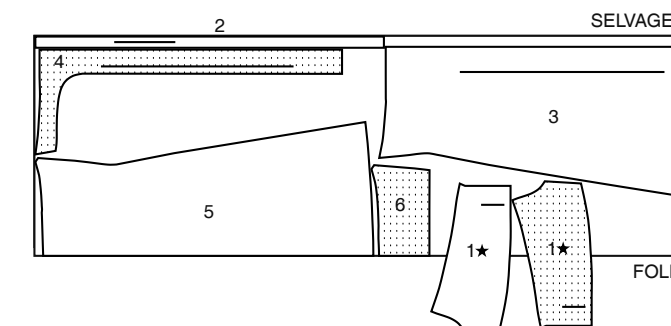
DRESS B

USE PIECES 1 2 3 4 5 6

45" (115CM) WITH NAP ALL SIZES



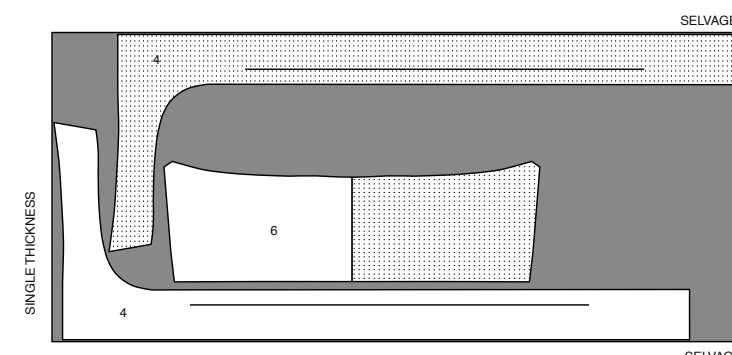
60" (150CM) WITH NAP ALL SIZES



INTERFACING B

USE PIECES 4 6

20" (51CM) WITHOUT NAP ALL SIZES



SEWING TUTORIALS



Build your skills viewing short, easy-to-follow videos at simplicity.com/sewingtutorials

Sewing Directions

FABRIC KEY



Sewing methods in **BOLD TYPE** have Sewing Tutorial Video available. Scan QR CODE to watch videos:

GATHER – See **Gathering**: “sewing two row gathers” video.

NARROW HEM – See **Hems**: “sewing narrow hems” video.

SLIPSTITCH – See **Hand Stitching**: “how to slip stitch” video.

TOPSTITCH – See **Machine Stitches**: “how to topstitch” video.

UNDERSTITCH – See **Machine Stitches**: “how to understitch” video.

PATTERN PIECES WILL BE IDENTIFIED BY NUMBERS THE FIRST TIME THEY ARE USED.

STITCH 5/8” (1.5CM) SEAMS WITH RIGHT SIDES TOGETHER UNLESS OTHERWISE STATED.

DRESS A, B

INTERFACING

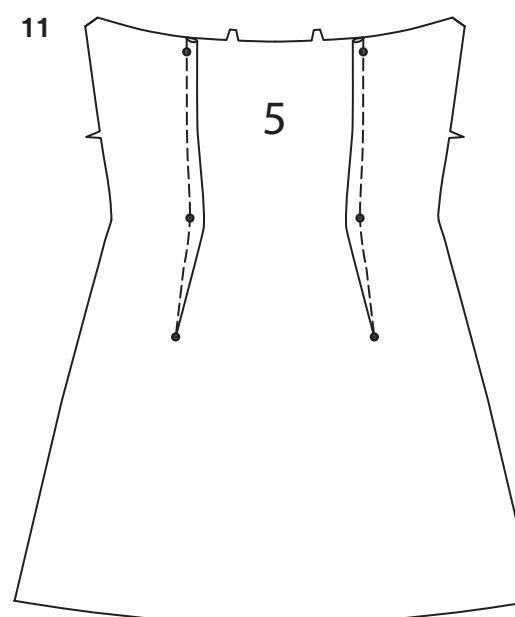
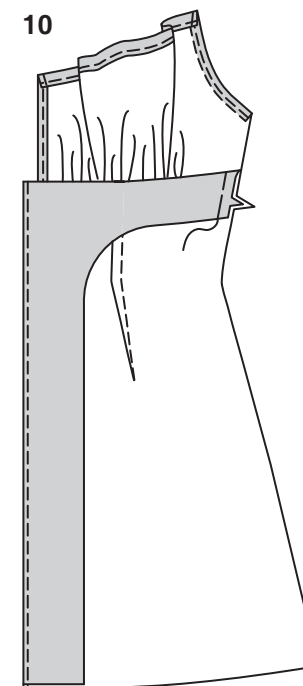
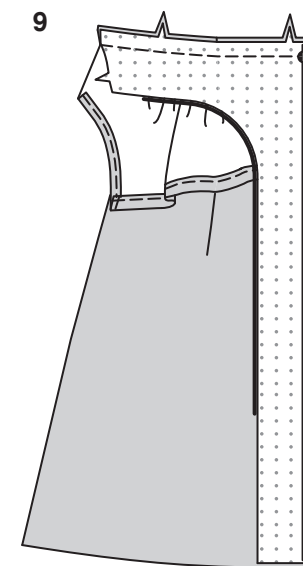
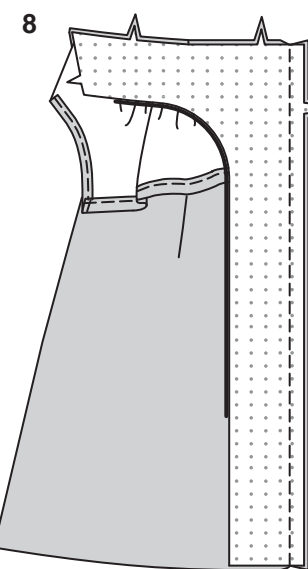
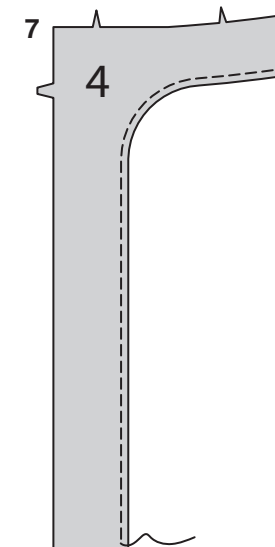
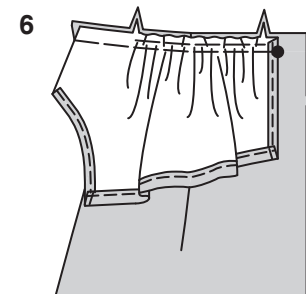
1. Pin interfacing to **WRONG** side of **FRONT FACING** (4) and **BACK FACING** (6). Fuse interfacing in place following manufacturer’s directions.

BODICE

2. To **GATHER** lower edge of **BODICE FRONT** between the notches, loosen needle tension slightly. On **OUTSIDE**, stitch 5/8” (1.5cm) from cut edge using a long stitch. Stitch again 1/4” (6mm) from the first stitching within the seam allowance.
3. Press under 5/8” (1.5cm) on front edge of bodice front. To form a **NARROW HEM**, tuck under raw edge to meet crease. Press. Stitch hem in place close to inner pressed edge. **NARROW HEM** armhole edge of bodice front in the same manner.
4. To form casing for strap, press under 3/4” (2cm) on upper edge of bodice front. Turn under raw edge 1/4” (6mm). Press. Stitch close to inner pressed edge.

FRONT

5. To stitch dart seam in **FRONT** (3), with **RIGHT** sides together, bring broken lines together carefully matching small dots. On **INSIDE**, place pins at **RIGHT** angles to the broken lines. Stitch the dart seam from outer edge to the point. Press the dart seam flat along the stitching to “blend” the stitches, then press dart toward front. **TIP** – To prevent a “bubble” at the point, make the last few stitches right on the fold and leave the thread ends long enough to tie a knot. **DO NOT** back-stitch at the point.



6. With **RIGHT** sides together and raw edges even, pin bodice to front, matching large dots and notches, pulling up gathering stitches to fit. Distribute gathers evenly. Baste.

7. To finish inner edge of **FRONT FACING** (4), stitch 1/4” (6mm) from raw edge and finish with pinking, overcasting, overlocking, zigzag stitching, or by turning in along stitching and stitching close to fold.

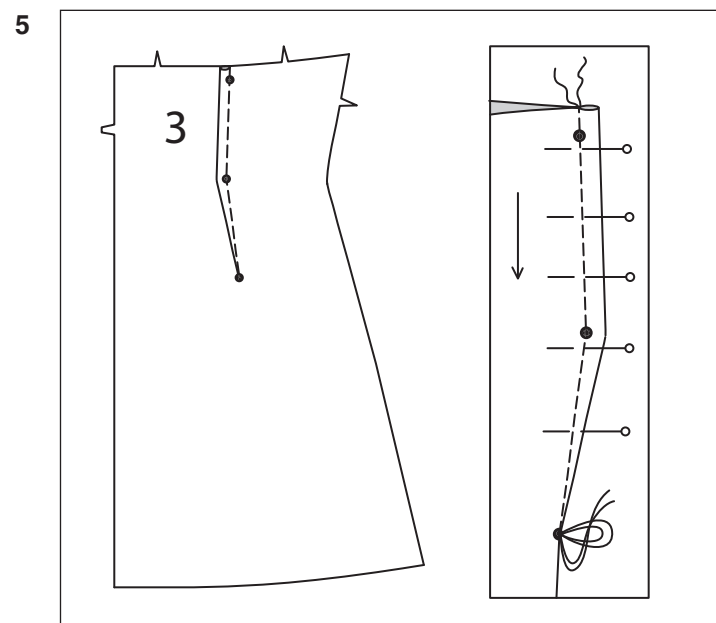
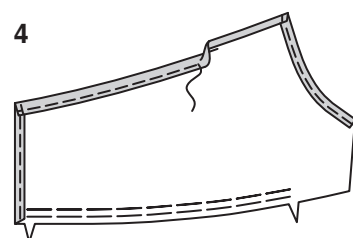
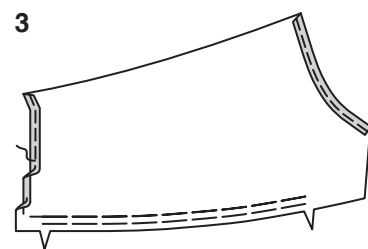
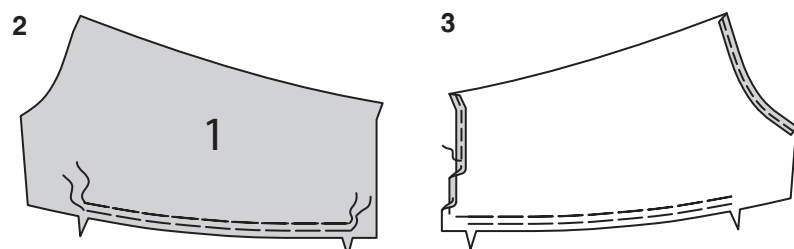
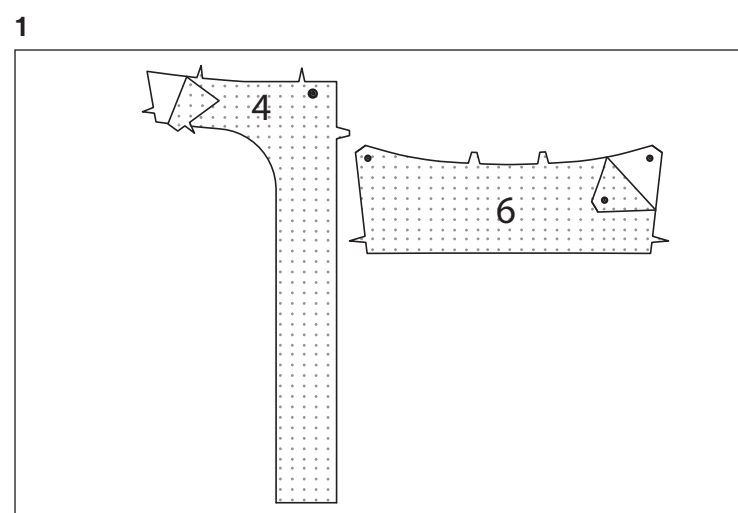
8. With **RIGHT** sides together and raw edges even, pin front facing to front (over bodice). Stitch front edge.

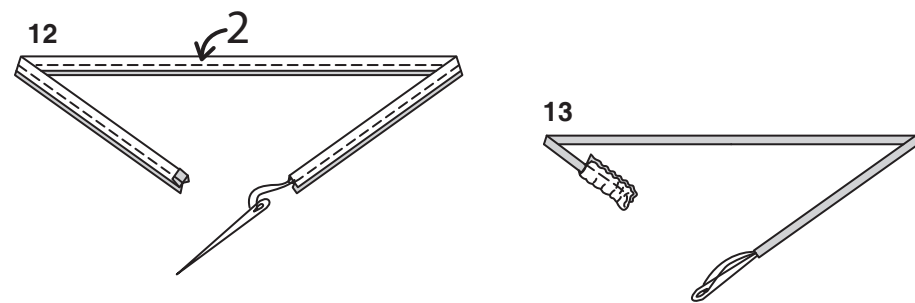
9. **UNDERSTITCH** front edge. Pin facing to front (over bodice), matching large dots and notches. Stitch upper edge.

10. Turn facing to **INSIDE**. Press. Baste raw edges together.

BACK

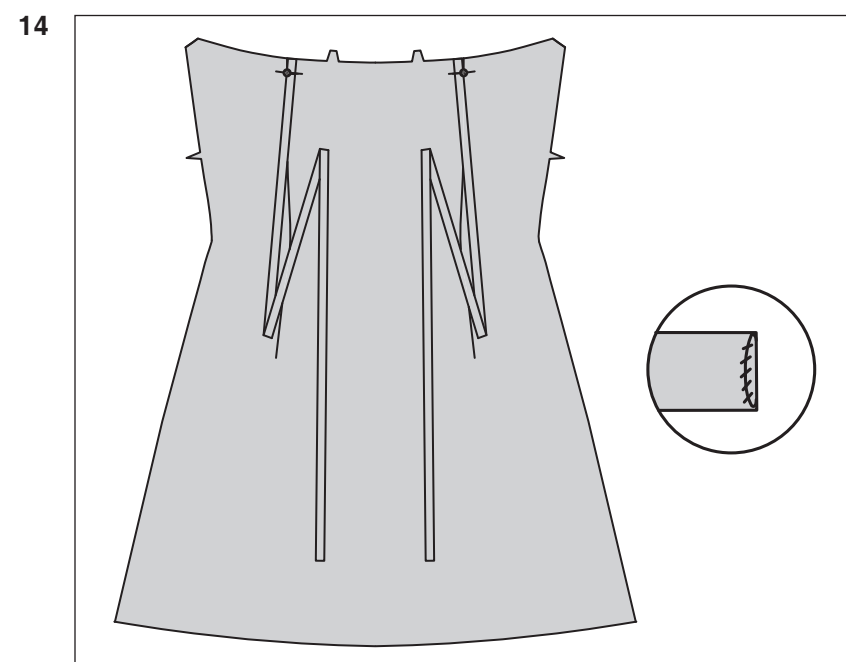
11. Make dart seam in **back** (5) in the same manner as for front, press dart toward center.



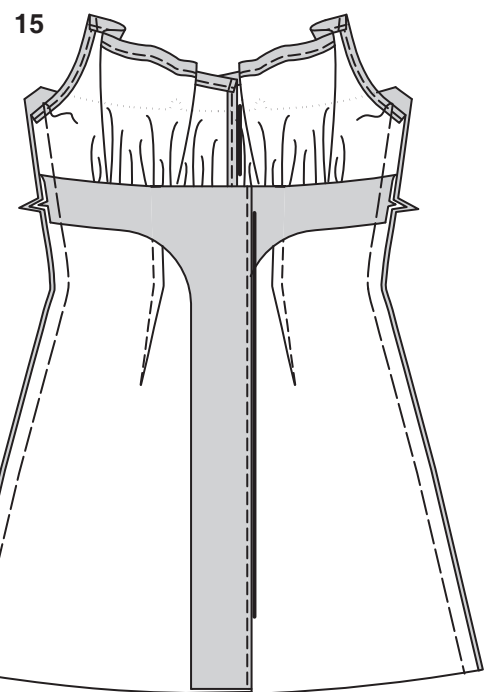


12. To make each strap, press under 3/8" (1cm) on unmarked end of STRAP (2). Fold strap in half, lengthwise, with RIGHT sides together. Stitch in a 3/8" (1cm) seam. With a needle, attach a strong thread to marked strap end.

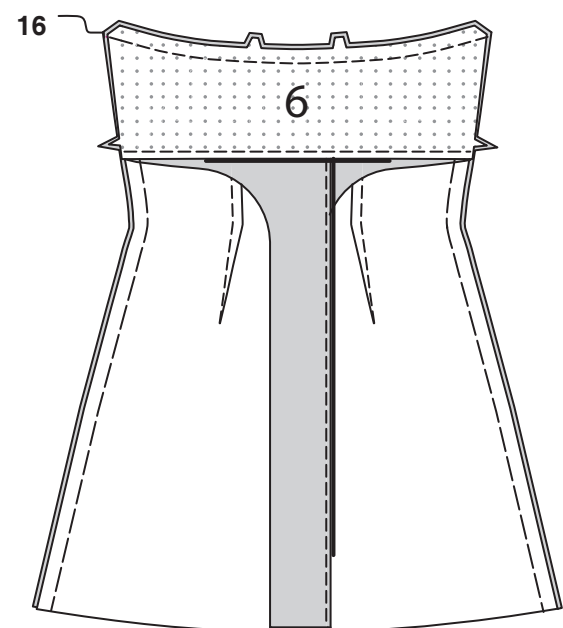
13. Draw needle eye forward, through fold, turning strap RIGHT side out.



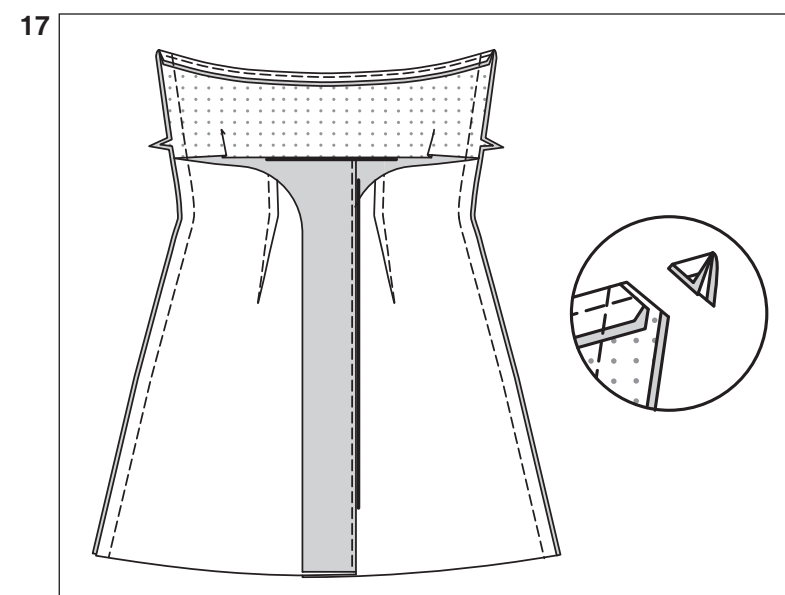
14. Press strap. **SLIPSTITCH** unmarked edges of end together. On OUTSIDE, pin marked end of strap to back, matching small dot to dart seam with inner edge of strap towards center. Baste across marked end.



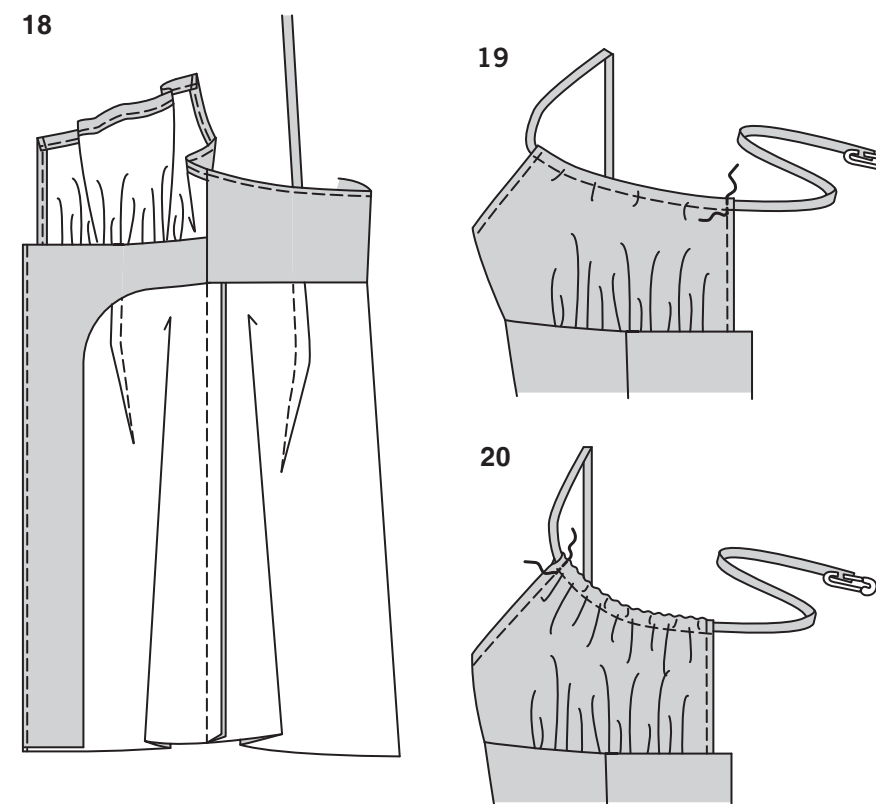
15. With RIGHT sides together and raw edges even, pin front to back at side edges. Baste. (Upper edge of back will extend 5/8" (1.5cm) beyond finished upper edge of front.)



16. Finish lower edge of BACK FACING (6) in the same manner as front facing. With RIGHT sides together and raw edges even, pin facing to back along upper edge (over WRONG side of bodice front), matching centers and notches. Stitch, being careful not to catch in finished upper edge of front.



17. **UNDERSTITCH** the back facing. Pin facing to dress at side edges. Stitch along previous basting. Trim corner.



18. Turn back facing to INSIDE; press, pressing out the front and seam toward back.

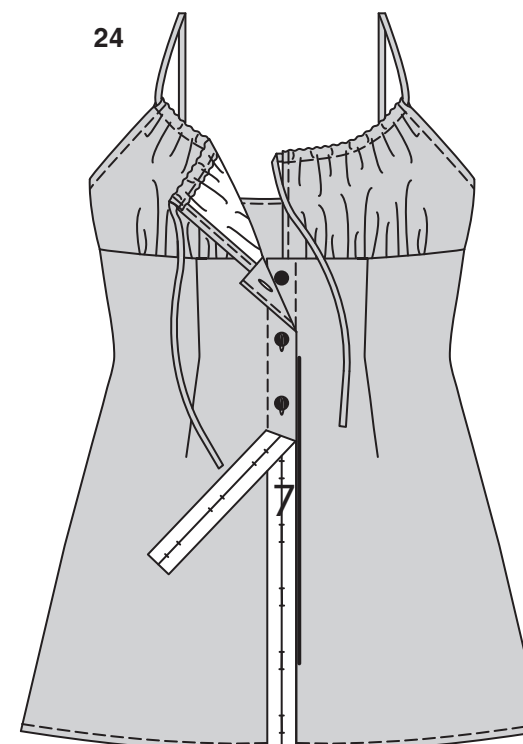
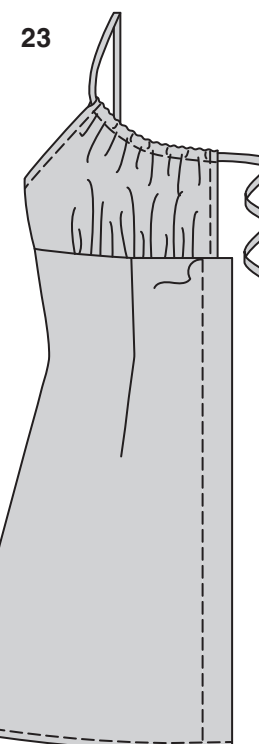
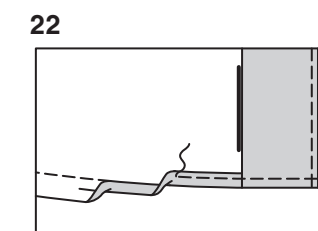
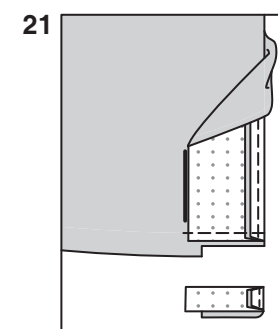
FINISHING

19. Turn dress RIGHT side out; press. Attach a safety pin to finished end of strap. Thread finished edge of strap through casing from armhole edge, bringing front stitching line to front edge of bodice along previous hem stitching. Stitch in place along front stitching line, creating front ties.

20. Gather upper edge of bodice by pulling strap toward back and matching back stitching line with hem stitching on armhole edge. Stitch across stitching line over previous stitching.

21. Turn front facing to OUTSIDE along seam. Stitch across facing along 5/8" (1.5cm) hem line. Trim facing close to stitching. Trim dress to within 5/8" (1.5cm) of inner edge of facing.

22. Turn facing to INSIDE; press, pressing up hem along marking. **NARROW HEM**, stitching hem in place starting at opening edge.



23. **TOPSTITCH** front 1-1/4" (3.2cm) from front edges.

24. To mark buttonholes in RIGHT front, place **BUTTONHOLE GUIDE** (7) along finished edge of front, matching centers. Transfer markings. Make buttonholes at markings. Lap RIGHT front over LEFT, matching centers. Sew buttons under buttonholes.