

S3126

Simplicity[®] COSTUMES



Designed and printed in USA.

Shop all the pattern brands you love @

Simplicity[®].com

For customers outside of the U.S. and Canada

sewdirect.com

sewdirect.com.au

BODY MEASUREMENTS

Size	34	36	38	40	42	44	46	48	50	52
Chest	34	36	38	40	42	44	46	48	50	52
	(87)	(92)	(97)	(102)	(107)	(112)	(117)	(122)	(127)	(132)
	cm	cm	cm	cm	cm	cm	cm	cm	cm	cm
Waist	28	30	32	34	36	38	40	42	44	46
	(71)	(76)	(81)	(87)	(92)	(97)	(102)	(107)	(112)	(117)
	cm	cm	cm	cm	cm	cm	cm	cm	cm	cm
Hip	35	37	39	41	43	45	47	49	51	53
	(89)	(94)	(99)	(104)	(109)	(114)	(119)	(124)	(129)	(135)
	cm	cm	cm	cm	cm	cm	cm	cm	cm	cm
Neckband	14	14 1/2	15	15 1/2	16	16 1/2	17	17 1/2	18	18 1/2
	(35.5)	(37)	(38)	(39.5)	(40.5)	(42)	(43)	(44.5)	(45.5)	(47)
	cm	cm	cm	cm	cm	cm	cm	cm	cm	cm

Average

MEN'S COSTUMES

Suggested Fabrics: Dupioni, Gabardine, Jacquards, Lightweight Wool Types, Linen Types, Satin. **A,B also in Brocade, Velvet.** **Lining:** Lightweight Satin, Lining Fabric, Taffeta. **Interfacing:** Lightweight Fusible.

Notions: **A,B:** Six 1 1/2" (3cm) shank buttons, 3/4 yd. (0.70m) of 1/8" (3mm) elastic cord, pair of 3/4" - 1" (2cm - 2.5cm) shoulder pads, one snap. **Also for A:** 3/4 yds. (3.70m) of 1 1/2" - 2" (4cm - 5cm) flat trim. **B,C:** 1/2" - 3/4" (1.3cm - 1.5cm) gimp braid: 4% yds. (4.60m) for **B**, 1 yd. (0.90m) for **C**.

Sizes	34	36	38	40	42	44	46	48	50	52	
European	44	46	48	50	52	54	56	58	60	62	
Coat A	45**	4 1/4	4 1/4	4 1/4	4 1/4	5	5 1/2	5 1/2	5 1/2	5 1/2	Yds.
	60**	3	3 1/4	3 1/4	3 1/4	3 1/4	3 1/4	3 1/4	3 1/4	3 1/4	"
	115cm*	3.9	3.9	3.9	4.0	4.6	4.7	4.7	4.7	4.8	m
	150cm*	2.7	2.7	2.9	3.0	3.2	3.2	3.2	3.2	3.3	"

Interfacing - 20" - 3 yds. (51cm - 2.6m)

Lining A,B	45***	1 1/2	1 1/2	1 1/2	1 1/2	1 1/2	1 1/2	1 1/2	1 1/2	1 1/2	Yds.
	115cm**	1.4	1.4	1.4	1.4	1.4	1.6	1.7	1.7	1.7	m
Coat B	45**	3	3	3 1/4	3 1/4	3 1/4	3 1/4	3 1/4	3 1/4	3 1/4	Yds.
	60**	2 1/4	2 1/4	2 1/4	2 1/4	2 1/4	2 1/4	2 1/4	2 1/4	2 1/4	"
	115cm*	2.7	2.7	2.9	2.9	2.9	3.0	3.3	3.3	3.4	m
	150cm*	2.1	2.1	2.1	2.2	2.3	2.3	2.3	2.3	2.4	"

Interfacing - 20" - 3 1/2 yds. (51cm - 3.2m)

Vest C	45**	7	7 1/4	7 1/4	7 1/4	7 1/2	7 1/2	7 1/2	7 1/2	8 1/4	8 1/4	Yds.
	60**	4 1/2	4 1/2	4 1/2	4 1/2	4 1/2	4 1/2	5	5 1/2	5 1/2	5 1/2	"
	115cm*	6.4	6.5	6.5	6.7	6.9	6.9	7.0	7.2	7.5	7.8	m
	150cm*	4.1	4.1	4.2	4.3	4.3	4.5	4.5	5.3	5.4	5.4	"
Lining	45***	5 1/2	5 1/2	5 1/2	5 1/2	5 1/2	5 1/2	5 1/2	5 1/2	5 1/2	5 1/2	Yds.
	115cm**	5.0	5.0	5.1	5.1	5.1	5.1	5.1	5.1	5.3	5.3	m

Interfacing - 20" - 3/4 yd. (51cm - 0.7m)

Sash D 45, 60** - 1 1/2 yds. (115, 150cm* - 1.4m)

FINISHED GARMENT MEASUREMENTS (Includes Design and Wearing Ease)

A,B Chest	37	39	41	43	45	47	49	51	53	55	Ins.
	94	99	104	109	114	119	124	130	135	140	cm
A,B Waist	29	31	33	35	37	39	41	43	45	47	Ins.
	74	79	84	89	94	99	104	109	114	119	cm
Finished back length from base of neck											
Coat A	47 1/4	47 1/4	47 1/4	48	48 1/4	48 1/4	48 1/4	49	49 1/4	49 1/4	Ins.
	120	121	121	122	123	123	124	124	125	126	cm
Coat B	28 1/4	28 1/4	28 1/4	29	29 1/4	29 1/4	29 1/4	30	30 1/4	30 1/4	Ins.
	72	72	73	74	74	75	76	76	77	77	cm
Vest C	61 1/4	61 1/4	61 1/4	62	62 1/4	62 1/4	62 1/4	63	63 1/4	63 1/4	Ins.
	156	156	157	157	158	159	159	160	161	161	cm

*with nap **without nap



A



B



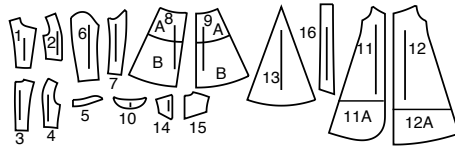
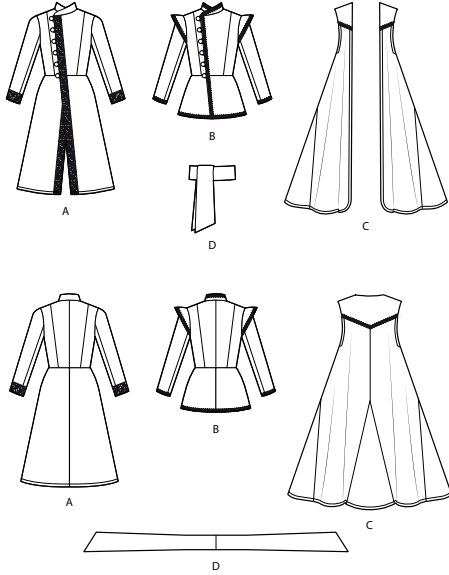
C



D

Simplicity®

Thank you for purchasing this Simplicity pattern. We made every effort to provide you with a high quality product.



- 1 Upper Front-A,B
- 2 Upper Side Front-A,B
- 3 Upper Back-A,B
- 4 Upper Side Back-A,B
- 5 Collar-A,B
- 6 Upper Sleeve-A,B
- 7 Under Sleeve-A,B
- 8 Lower Front-A,B
- 9 Lower Back-A,B
- 10 Flange-B
- 11 Front-C
- 11A Extension-C
- 12 Back-C
- 12A Extension-C
- 13 Godet-C
- 14 Yoke Front-C
- 15 Yoke Back-C
- 16 Sash-D

General Directions

The Pattern

- SYMBOLS**
- ↔ GRAIN LINE Place on straight grain of fabric parallel to selvage
 - ⇄ PLACE SOLID LINE on fold of fabric.
 - - - - CENTER FRONT OR BACK of garment.
 - ▽ NOTCHES
 - DOTS
 - CUTTING LINE
 - ≡ LENGTHEN OR SHORTEN LINES

SEAM ALLOWANCE: 5/8" (1.5cm) unless otherwise stated is included but not printed on MULTI-SIZE PATTERNS. Mark your size with colored felt tip pen. See chart on tissue for how to use MULTI-SIZE PATTERNS.

ADJUST IF NEEDED

Make adjustments before placing pattern on fabric.

TO LENGTHEN:
Cut pattern between lengthen or shorten lines. Spread pattern evenly, the amount needed and tape to paper.

TO SHORTEN:
At lengthen or shorten lines, make an even pleat taking up amount needed. Tape in place.

When lengthen or shorten lines are not given, make adjustments at lower edge of pattern.

Cutting/Marking

BEFORE CUTTING:

PRESS pattern pieces with a warm dry iron. PRE-SHRINK fabric by pre-washing washables or steam-pressing non-washables.

CIRCLE your cutting layout.

PIN pattern to fabric as shown in Cutting Layouts.

• FOR DOUBLE THICKNESS: Fold fabric with RIGHT sides together.

• FOR SINGLE THICKNESS: Place fabric RIGHT side up.

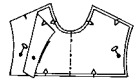
• FOR PILE, SHADED OR ONE WAY DESIGN FABRICS: Use "with nap" layouts

AFTER CUTTING:

Transfer markings to WRONG side of fabric before removing pattern. Use pin and chalk method or dressmaker's tracing paper and wheel.

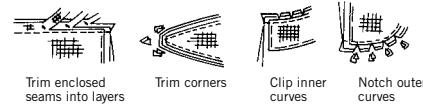
To Quick Mark:

- Snip edge of fabric to mark notches, ends of fold lines and center lines.
- Pin mark dots.



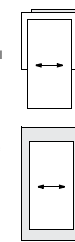
Sewing

- SEW garment following Sewing Directions.
- PIN or machine-baste seams matching notches.
- STITCH 5/8" (1.5 cm) seams unless otherwise stated.
- PRESS seams open unless otherwise indicated clipping when necessary so seams will lie flat.
- TRIM seams to reduce bulk, as shown below.



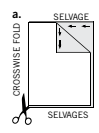
SPECIAL CUTTING NOTES

★ If layout shows a piece extending past fold, cut out all pieces except piece that extends.

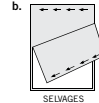


Open out fabric to single thickness. Cut extending piece on RIGHT side of fabric in position shown.

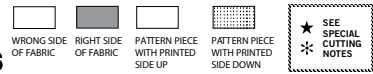
✳ Mark small arrows along both selvages indicating direction of nap or design. Fold fabric crosswise with RIGHT sides together, and cut along fold (a).



Turn one fabric layer around so arrows on both layers go in the same direction. Place RIGHT sides together (b).



Cutting Layouts

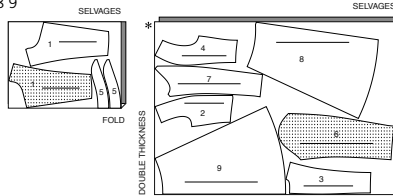


POSITION OF PATTERN PIECES MAY VARY SLIGHTLY ACCORDING TO YOUR PATTERN SIZE

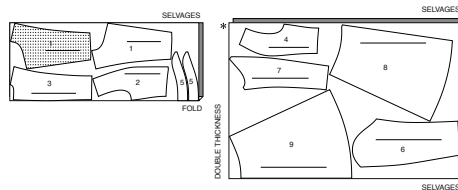
COAT A

USE PIECES 1 2 3 4 5 6 7 8 9

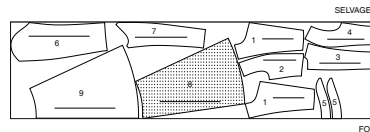
45° (115CM) WITH NAP
SIZES 34 36 38 40



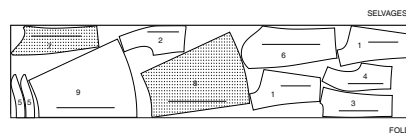
45° (115CM) WITH NAP
SIZES 42 44 46 48 50 52



60° (150CM) WITH NAP
SIZES 34 36 38 40



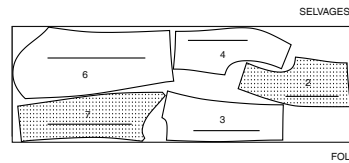
60° (150CM) WITH NAP
SIZES 42 44 46 48 50 52



LINING A,B

USE PIECES 2 3 4 6 7

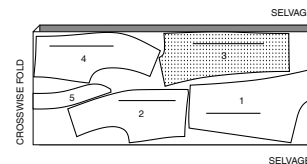
45° (115CM) WITHOUT NAP
ALL SIZES



INTERFACING A

USE PIECES 1 2 3 4 5

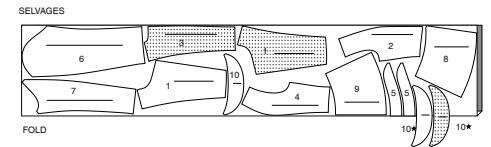
20° (51CM) ALL SIZES



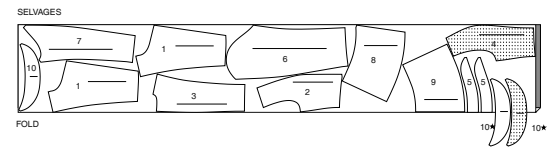
JACKET B

USE PIECES 1 2 3 4 5 6 7 8 9 10

45° (115CM) WITH NAP
SIZES 34 36 38 40 42 44



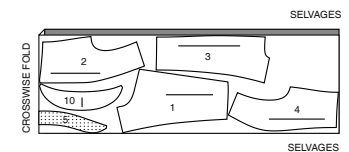
60° (150CM) WITH NAP
SIZES 40 42 44 46 48 50 52



INTERFACING B

USE PIECES 1 2 3 4 5 10

20° (51CM) ALL SIZES



S3126

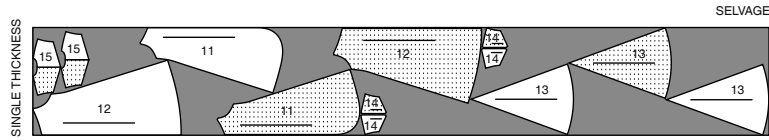
2 of 5

VEST C

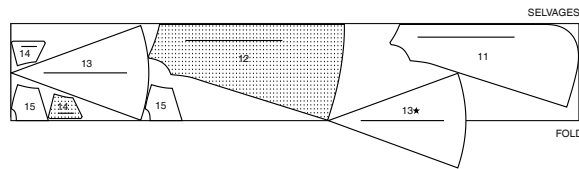
USE PIECES 11 (11A) 12 (12A) 13 14 15

NOTE: BEFORE CUTTING FABRIC, JOIN PIECE IN PARENTHESIS TO CORRESPONDING PIECE FOLLOWING INSTRUCTIONS ON TISSUE PATTERN.

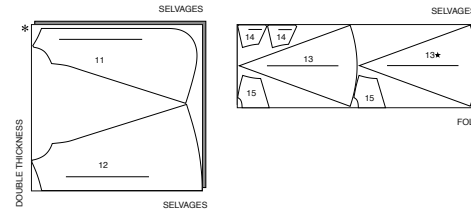
45" (115CM) WITH NAP / ALL SIZES



60" (150CM) WITH NAP
SIZES 34 36 38 40 42 44 46



60" (150CM) WITH NAP
SIZES 48 50 52

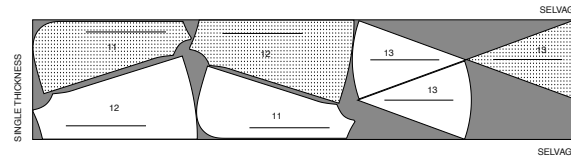


LINING C

USE PIECES 11 (11A) 12 (12A) 13

NOTE: BEFORE CUTTING FABRIC JOIN PIECE IN PARENTHESIS TO CORRESPONDING PIECE FOLLOWING INSTRUCTIONS ON TISSUE PATTERN.

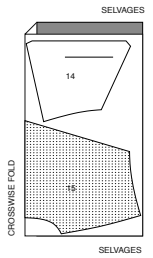
45" (115CM) WITHOUT NAP
ALL SIZES



INTERFACING C

USE PIECES 14 15

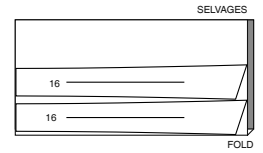
20" (51CM)
ALL SIZES



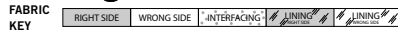
SASH D

USE PIECE 16

45"/60" (115CM/150CM)
WITH NAP
ALL SIZES



Sewing Directions



Sewing methods in **BOLD TYPE** have Sewing Tutorial Video available. Scan QR CODE to watch videos:

CATCH STITCH – See Hand Stitching: “hand sewing a catch stitch” video.

EASE/GATHER – See Gathering: “sewing two row gathers” video.

NARROW HEM – See Hems: “sewing narrow hems” video.

SLEEVE – See Armholes/Sleeves: “sewing a set in sleeve” video.

SLIPSTITCH – See Hand Stitching: “how to slip stitch” video.

STAYSTITCH – See Machine Stitches: “how to do stay stitching” video.

STITCH IN THE DITCH – See Machine Stitches: “how to stitch in the ditch” video.

TACK – See Hand Stitching: “how to tack” video.

TRIM SEAM – See Seams: “how to trim, clip and layer seams” video.

UNDERSTITCH – See Machine Stitches: “how to understitch” video.

COAT A, JACKET B

NOTE: Under each sub-heading, View B will be shown unless otherwise indicated.

INTERFACING

1. Pin INTERFACING to wrong side of each matching FABRIC section. Fuse, following manufacturer’s instructions.

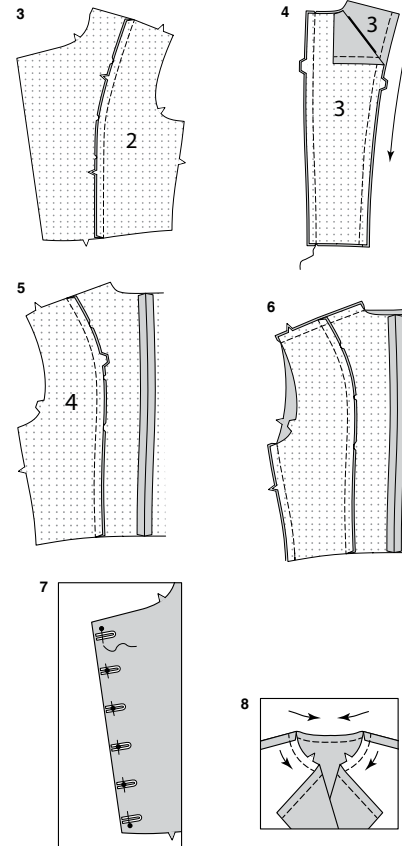
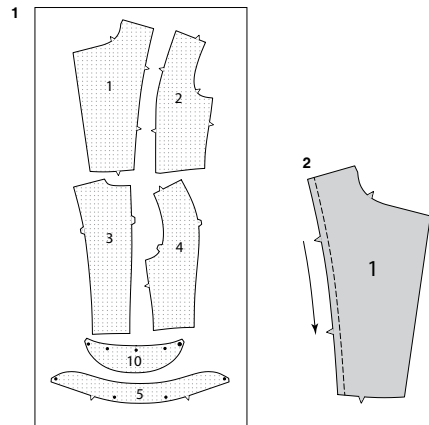
FRONT AND BACK

2. **STAYSTITCH** side edges of UPPER FRONT (1) sections, in direction of arrows.

SEWING TUTORIALS



Build your skills viewing short, easy-to-follow videos at simplicity.com/sewingtutorials



3. With **RIGHT** sides together, pin **UPPER SIDE FRONT (2)** to side edge of front, matching notches. Clip to stay-stitching, as necessary. Baste. Stitch. Press seam toward front.

4. With **RIGHT** sides together, stitch center back seam of **UPPER BACK (3)** sections. **STAYSTITCH** side edges of back, in direction of arrows.

5. With **RIGHT** sides together, pin **UPPER SIDE BACK (4)** to side edge of back, matching notches. Clip to stay-stitching, as necessary. Baste. Stitch. Press seam toward back.

6. Stitch upper front and upper back sections together at shoulder and side seams.

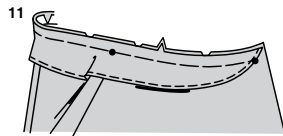
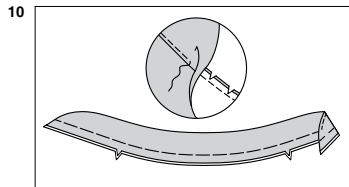
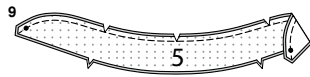
7. Cut six pieces of elastic cord each measuring 2-3/4" (7 cm) long. Fold loops in half. On **OUTSIDE**, pin ends of loops to **LEFT** front, centering over small dots. Place upper loop, 1/4"(6mm) below seam allowance and lower loop, 1/4"(6mm) above seam allowance, as shown. Baste loops in place.

COLLAR

8. **STAYSTITCH** neck edge of garment in direction of arrows.

S3126

3 of 5



9. With **RIGHT** sides together, pin **COLLAR** (5) sections together, having raw edges even. Stitch curved edge in a 3/8" (1cm) seam, leaving notched edge open. **TRIM SEAM**; clip curves.

10. **UNDERSTITCH** non-interfaced side of collar. Turn collar right side out. Press. Baste raw edges together.

11. With under-stitching facing up. Pin collar to neck edge of coat/jacket matching small dots, matching inner small dots to shoulder seams. Clip to stay-stitching as necessary. Baste.

SLEEVES

12. **EASESTITCH** side edge of **UPPER SLEEVE** (6) between notches.

13. With **RIGHT** sides together, pin upper sleeve to **UNDER SLEEVE** (7), matching notches. Adjust ease to fit. Baste. Stitch. **EASESTITCH** top of sleeve between notches. Stitch remaining sleeve seam. Press up hem. **CATCHSTITCH** hem in place.

14. VIEW A

Cut a piece of trim the length of lower edge of each sleeve, plus 1/2" (1.3cm). On **OUTSIDE**, pin trim to lower edge of sleeve, placing long edge of trim even with finished edge. Turn under and lap ends at back sleeve seam. **EDGESTITCH** long edges of trim in place.

15. VIEW B

Cut a piece of trim the length of lower edge of each sleeve, plus 1/2" (1.3cm). On **OUTSIDE**, pin trim to lower edge of sleeve, placing long edge of trim just overlapping finished edge. Turn under and lap ends at back sleeve seam. Stitch along center of trim.

16. With **RIGHT** sides together, pin **FLANGE** (10) sections together, having raw edges even. Stitch curved edge in a 3/8" (1cm) seam, leaving marked edge open. **TRIM SEAM**; clip curves.

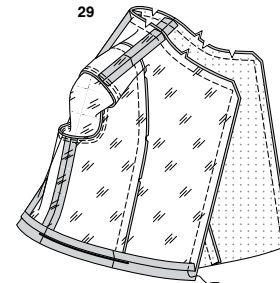
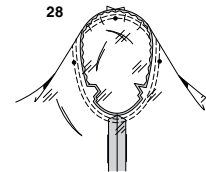
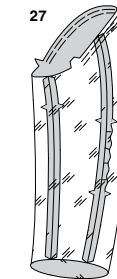
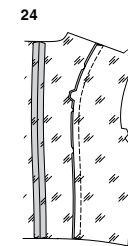
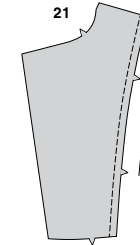
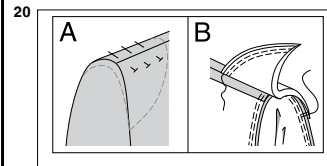
17. Turn flange **RIGHT** side out. Press. Baste raw edges together. Cut a piece of trim the length of curved edge of flange. On **OUTSIDE**, pin trim to outer edge of flange, placing long edge of trim just overlapping finished edge. Stitch along center of trim.

18. With trim side facing down, on **OUTSIDE**, pin flange to armhole edges matching small and large dots, placing inner small dot at shoulder seam. Baste.

CONTINUE AS FOLLOWS FOR BOTH VIEWS

19. Turn **SLEEVE RIGHT** side out.

Hold garment **WRONG** side out with armhole toward you. With **RIGHT** sides together, pin sleeve to armhole edge with center small dot at shoulder seam, matching side seam to large dot, notches and remaining small dots. Pull up ease stitches to fit. To distribute fullness evenly, slide fabric along bobbin threads until there are no puckers or tucks on the seam line. Baste. Stitch. Stitch again 1/8" (3mm) from first stitching. Trim seam below notches close to stitching. Press only the seam allowance, shrinking out fullness.



20. **A.** Try on coat/jacket for shoulder pad placement. Pin pad to jacket, extending outer edge about 5/8" (1.5cm) beyond armhole seam.
B. Sew pad to shoulder seam allowance; tack ends to armhole seam.

FACING AND LINING

NOTE: For sleeve lining sections, cut lining 1" (2.5cm) shorter.

21. **STAYSTITCH** side edges of upper front (1) facing sections, in direction of arrows.

22. With **RIGHT** sides together, pin upper side front **LINING** sections to side edge of front, matching notches. Clip to stay-stitching, as necessary. Baste. Stitch. Press seam toward front.

23. With **RIGHT** sides together, stitch center back seam of upper back **LINING** sections.
STAYSTITCH side edges of back lining, in direction of arrows.

24. With **RIGHT** sides together, pin upper side back **LINING** to side edge of back, matching notches. Clip to stay-stitching, as necessary. Baste. Stitch. Press seam toward back.

25. Stitch upper front and upper back sections together at shoulder and side seams.

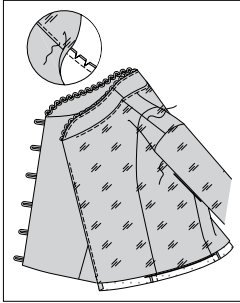
26. **EASESTITCH** side edge of upper sleeve **LINING** between notches.

27. With **RIGHT** sides together, pin upper sleeve to under sleeve **LINING**, matching notches. Adjust ease to fit. Baste. Stitch. **EASESTITCH** top of sleeve between notches. Stitch remaining sleeve seam.

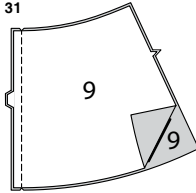
28. Turn **SLEEVE RIGHT** side out.
Hold garment **WRONG** side out with armhole toward you. With **RIGHT** sides together, pin sleeve to armhole edge with center small dot at shoulder seam, matching side seam to large dot, notches and remaining small dots. Pull up ease stitches to fit.
To distribute fullness evenly, slide fabric along bobbin threads until there are no puckers or tucks on the seam line. Baste. Stitch. Stitch again 1/8" (3mm) from first stitching. Trim seam below notches close to stitching. Press only the seam allowance, shrinking out fullness.

29. Press under 5/8" (1.5cm) on lower edges of facing/lining. Pin facing/lining to garment matching seams and markings. Stitch front opening and neck edges **TRIM SEAM**; Clip curves.

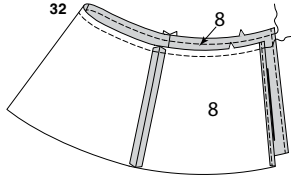
30



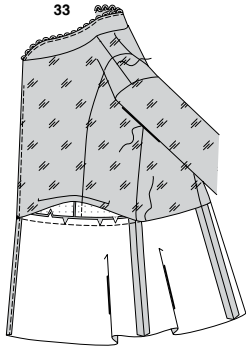
31



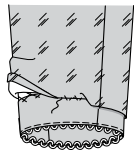
32



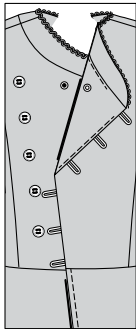
33



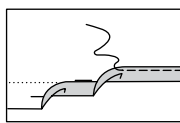
34



35



36



- 30. UNDERSTITCH** facing/lining, as far as possible. Turn facing and lining to **INSIDE**, slipping sleeve lining in place. Press. **TACK** sleeves at shoulders and underarms.

LOWER FRONT AND BACK

- 31.** With **RIGHT** sides together, stitch center back seam of **LOWER BACK (9)** sections.

- 32. NARROW HEM** front edges of **LOWER FRONT (8)** sections. With **RIGHT** sides together, stitch lower front to lower back at side seams. Machine-stitch 1/2" (1.3cm) from upper edge.

- 33.** With **RIGHT** sides together, pin lower section to upper bodice, matching seams, notches and small dots. Clip to stitching as necessary. Stitch, press seam up. **SLIPSTITCH** pressed edge of lining over seam.

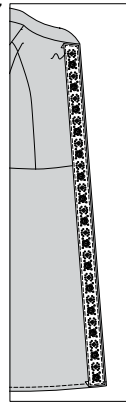
FINISHING

- 34.** Turn in 5/8" (1.5cm) on lower edge of sleeve lining; place folded edge 5/8" (1.5cm) below raw edge of hem. **SLIPSTITCH** in place.
NOTE: A pleat will form at lower edge for wearing ease.

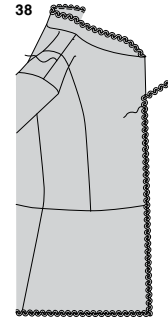
- 35.** Separate snap. On **OUTSIDE**, hand-sew socket half of snap to **RIGHT** front at small dot. On **INSIDE**, hand-sew remaining knob half of snap to **LEFT** facing at small dot. On **OUTSIDE**, hand-sew buttons to **RIGHT** front at small dots.

- 36. NARROW HEM** lower edges of garment, easing in fullness if necessary.

37



38



37. VIEW A

- Cut two pieces of trim the length of front edges, plus 1/2" (1.3cm). On **OUTSIDE**, pin trim to front, placing long edge of trim even with finished edge. Turn under ends. **EDGESTITCH** trim in place.

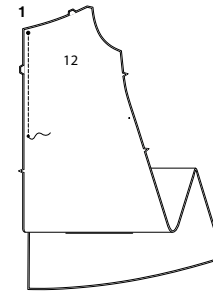
38. VIEW B

- Cut one continuous piece of trim the length of front and lower edges of jacket, plus 1/2" (1.3cm). On **OUTSIDE**, pin trim to front and lower edges, placing long edge of trim just overlapping finished edge. Turn under ends at neck edge. Stitch along center of trim.

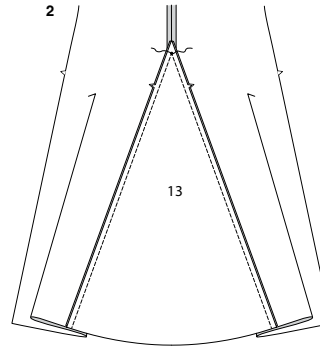
VEST C

FRONT AND BACK

- 1.** With **RIGHT** sides together, stitch center back seam of **BACK (12)** sections between large and small dots. Back-stitch at dots to reinforce seam.

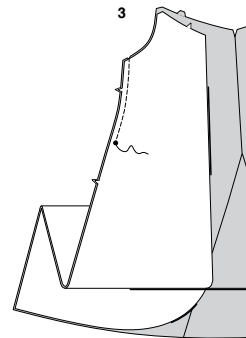


2



- 2.** With **RIGHT** sides together, pin **GODET (13)** to back, matching small dots and having lower raw edges even. Stitch, breaking stitching at small dot.

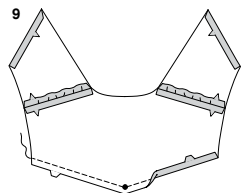
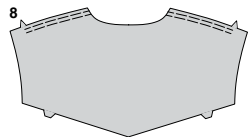
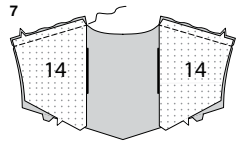
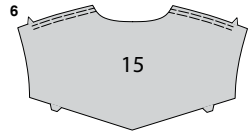
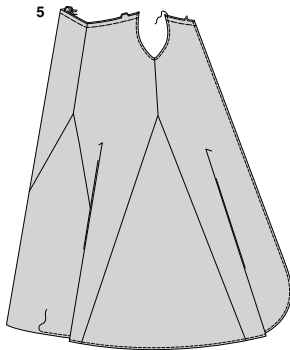
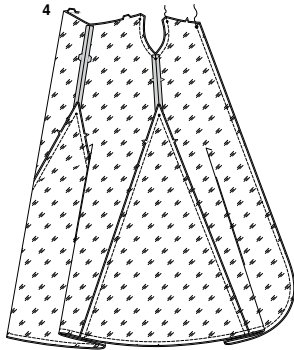
3



- 3.** Stitch **FRONT (11)** sections to each side of back, matching notches, ending at small dot. Back-stitch to reinforce seam. With **RIGHT** sides together, stitch remaining godet sections to front and back at sides, in same manner as back godet.

S3126

5 of 5



LINING

4. Stitch lining sections in same manner as vest. With RIGHT sides together, pin lining to vest matching seams, having raw edges even, matching notches, seams and dots. Stitch armhole edge, leaving upper edge free. Stitch front and lower edges.

5. Turn lining to INSIDE, press. Baste raw edges together. TOPSTITCH front, lower, and armhole edges.

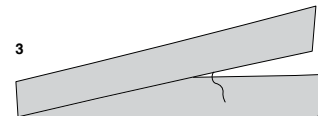
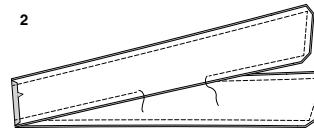
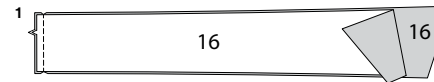
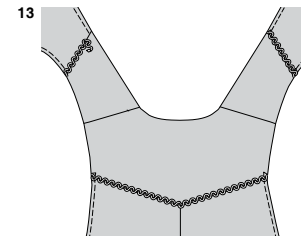
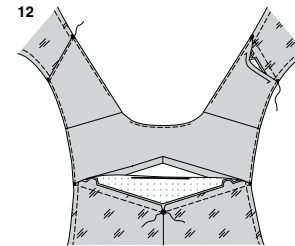
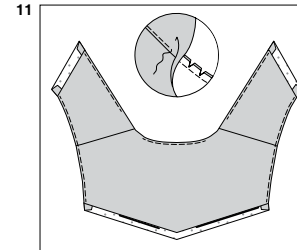
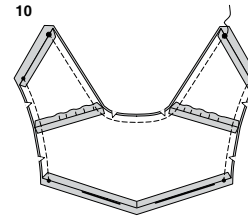
YOKE FRONT AND BACK

6. EASESTITCH shoulder edges of YOKE BACK (15) between notch and neck edge.

7. With RIGHT sides together, pin YOKE FRONT (14) to shoulder edges of yoke. Adjust ease. Baste. Stitch shoulder seams.

8. EASESTITCH shoulder edges of yoke back facing between notch and neck edge.

9. Stitch yoke front and back at shoulder seams in same manner as yoke. Machine stitch 1/2" (1.5cm) from lower edges of facing, pivoting with needle in fabric at large dot. Press under seam allowance along stitching.



10. With RIGHT sides together, pin facing to yoke, matching small and large dots. Stitch neck and armhole edges. TRIM SEAM, clip curves.

11. UNDERSTITCH yoke as far as possible. Turn yoke RIGHT side out. Press.

12. With RIGHT sides together, pin yoke to upper edge of vest front and back, matching small and large dots. Stitch, breaking stitching at large dot, keeping pressed edge of facing free. Press seams up, pressing yoke out. Pin yoke facing over seam placing pins on OUTSIDE. On OUTSIDE, STITCH IN THE DITCH, or "groove" of seam, catching in pressed edge on INSIDE.

FINISHING

13. Cut two pieces of trim the width of front yoke seam, plus 1/2" (1.3cm). On OUTSIDE, pin trim to front, placing trim along front seam, turning under 1/4" (6mm) on ends. Stitch along center of trim. Cut one piece of trim the width of back yoke seam, plus 1/2" (1.3cm). On OUTSIDE, pin trim to back, placing trim along back seam, turning under 1/4" (6mm) on ends. Stitch along center of trim.

SASH D

1. With RIGHT sides together, stitch notched ends of SASH (16) sections.

2. Stitch sash facing sections in same manner as for sash. With RIGHT sides together, pin sash sections together, having raw edges even. Stitch outer edge of sash, leaving an opening large enough for turning. TRIM SEAM.

3. Turn sash RIGHT side out. Press. SLIPSTITCH opening closed. Wear sash as desired or as shown on front of envelope.



Congrats!

You've completed your sewing adventure

SHARE YOUR LOOK



Post your pattern and tag us using [#simplicitypatterns](#)
[@simplicity_creative_group](#)
[@simplicitymccallsuk](#)
[@simplicitymccallsaustralia](#)
for a chance to be featured on our social media.

Look for more PDF patterns at [simplicity.com](#) or for customers outside the U.S. and Canada visit [sewdirect.com](#) and [sewdirect.com.au](#)

Have a question or need help with your sewing project contact us:

[Simplicity.com](#)

[Sewdirect.com](#)

[Sewdirect.com.au](#)

Simplicity
by design