

S3124

Simplicity[®]

Clothes Fit Dolls 11½ in./29cm



Shop all the pattern brands you love @

Simplicity[®].com

For customers outside of the U.S. and Canada

sewdirect.com

sewdirect.com.au

Andrea Schewe

Designed and printed in USA.

Average

11½" (29CM) FASHION DOLL CLOTHES

Suggested Fabrics: A, B, C, E, F and Bodice D in Calico, Cotton Types, Gingham, Lightweight Satin, Linen Types, Silk Dupioni, Taffeta. **Bodice D also in** Lightweight Velvet. **Skirt D, Wrap D and Petticoat G** in Tulle. **Gloves H, I** in Knits only such as Interlock, Jersey. **Lining A, B, C, D:** Lining Fabric. **Hat Brim Interfacing F:** Non-woven stiff fusible.

Notions: A, B, C, D, **Skirt E:** ¼" - ¾" (6mm - 1cm) hook and loop tape: 3" (8cm) length for A, D, 3½" (9cm) length for B, C, 2¼" (7cm) length for E. **Also for A:** ¼ yd. (0.8m) of ¼" (6mm) ribbon. **Also for B:** ¾ yd. (0.6m) of ¼" (1.5cm) ribbon, three ⅜" (3mm) shank buttons. **Also for C:** 2 yds. (1.8m) of ¼" (1.5cm) flat lace, one small ribbon rosette. **Also for D, G:** 5" (13cm) length of ¼" (3mm) elastic. **E:** Three ⅜" (3mm) shank buttons (for jacket), 5" (13cm) length of ¼" (1cm) grosgrain ribbon (for skirt). **F:** ½ yd. (0.6m) of 5/16" (8mm) flat lace, one to three small ribbon rosettes (opt.)

Dress A

45"* - ½ yd. (115cm* - 0.5m)

Bodice Lining: 8" x 9" (21cm x 23cm) remnant

Dress B, C

45"* - ½ yd. (115cm* - 0.5m)

Bodice Lining: 10" (26cm) square remnant

Contrast C (Cummerbund) - 5" (13cm) square fabric remnant

Bodice and Peplum D

45"* - ¼ yd. (115cm* - 0.2m)

Contrast (Skirt, Wrap): One roll of 6" (15cm) wide tulle

Lining: 45"* - ¾ yd. (115cm* - 0.3m)

Suit Jacket E

45"* - ¼ yd. (115cm* - 0.2m)

Contrast (Skirt) - 45"* - ½ yd. (115cm* - 0.5m)

Hat F

45"* - ¾ yd. (115cm* - 0.3m)

Interfacing: 7" x 10" (18cm x 26cm) remnant

Petticoat G

One roll of 6" (15cm) wide tulle

Short Gloves H

4" x 5" (10cm x 13cm) knit remnant

Long Gloves I

5" x 6" (13cm x 15cm) knit remnant

*with nap **without nap



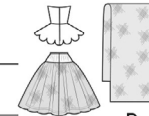
A



B



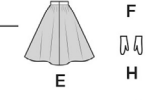
C



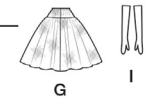
D



E



F



G



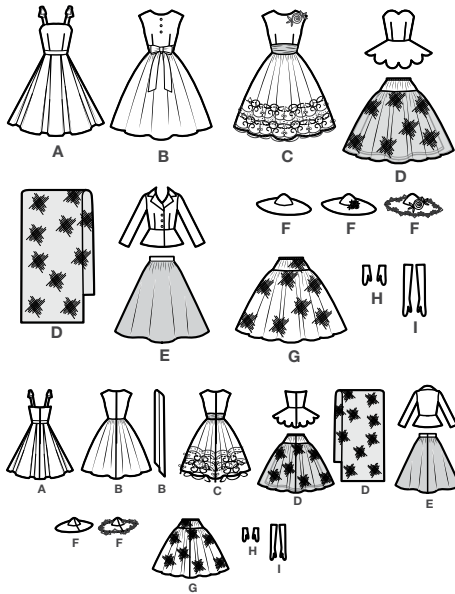
H



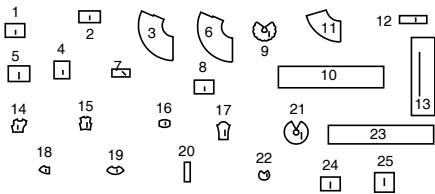
I

Simplicity® S3124

Thank you for purchasing this Simplicity pattern. We made every effort to provide you with a high quality product.

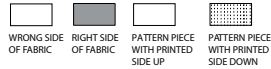


25 PIECES



- 1 BODICE FRONT - A
- 2 BODICE BACK - A,D
- 3 SKIRT - A
- 4 BODICE FRONT - B,C
- 5 BODICE BACK - B,C
- 6 SKIRT - B,C,E
- 7 CUMMERBUND - C
- 8 BODICE FRONT - D
- 9 PEPLUM - D
- 10 SKIRT - D
- 11 UNDERSKIRT - D
- 12 YOKE - D,G
- 13 WRAP - D
- 14 JACKET FRONT - E
- 15 JACKET BACK - E
- 16 COLLAR - E
- 17 SLEEVE - E
- 18 FRONT PEPLUM - E
- 19 BACK PEPLUM - E
- 20 GUIDE FOR WAISTBAND
- 21 BRIM - F
- 22 CROWN - F
- 23 PETTICOAT - G
- 24 GLOVES - H
- 25 GLOVES - I

Cutting Layouts



POSITION OF PATTERN PIECES MAY VARY SLIGHTLY ACCORDING TO YOUR PATTERN SIZE

General Directions For Cutting

PRE-SHRINK and iron all fabric.

FOR DOUBLE THICKNESS -Fold fabric with **RIGHT** sides together. Pin pattern to **WRONG** side of fabric.

FOR SINGLE THICKNESS -Pin pattern to **RIGHT** side of fabric.

★ If layout shows a piece extending past fold, cut out all pieces except piece that extends. Open out fabric to single thickness. Cut extending piece on **RIGHT** side of fabric in position shown.

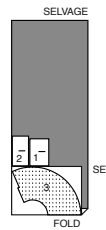
✱ Mark small arrows along both selvages in **dicating** direction of nap or design. Fold fabric crosswise with **RIGHT** sides together, and cut along fold. Turn one fabric layer around so arrows on both layers go in the same direction. Place **RIGHT** sides together.

NOTE: When pattern piece is in a pattern block, cut block from fabric/lining, then follow **REMNANT** instructions under **SEWING DIRECTIONS**.

DRESS A

USE PIECES 1 2 3

45" (115CM)
WITH NAP



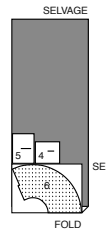
BODICE LINING A

CUT ONE OF PIECES 1 2 FROM REMNANT

DRESS B,C

USE PIECES 4 5 6

45" (115CM)
WITH NAP



BODICE LINING B,C

CUT ONE OF PIECES 4 5 FROM FABRIC REMNANT

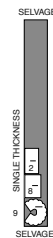
CONTRAST C (CUMMERBUND)

CUT ONE OF PIECE 7 FROM FABRIC REMNANT

BODICE AND PEPLUM D

USE PIECES 2 8 9

45" (115CM)
WITH NAP

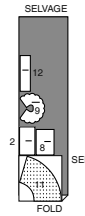


CONTRAST D- PIECES 10 AND 12 ARE CUT FROM ONE ROLL OF 6" (15CM) WIDE TULLE.

LINING D (BODICE LINING, UNDERSKIRT)

USE PIECES 2 8 9 11 12

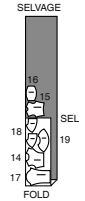
45" (115CM)
WITH NAP



SUIT JACKET E

USE PIECES 14 15 16 17 18 19

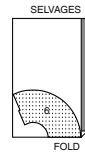
45" (115CM)
WITH NAP



CONTRAST E (SKIRT)

USE PIECE 6

45" (115CM)
WITH NAP

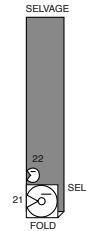


FOR WAISTBAND E- CUT ONE OF PIECE 20 FROM GROSSGRAIN RIBBON

HAT F

USE PIECES 21 22

45" (115CM)
WITH NAP



INTERFACING F- CUT ONE OF PIECES 21 22 FROM REMNANT

PETTICOAT G- PIECES 12 23 ARE CUT FROM ONE ROLL OF 6" (15CM) WIDE TULLE

SHORT SLEEVE GLOVES H- CUT ONE OF PIECE 24 FROM KNIT REMNANT

LONG SLEEVE GLOVES I- CUT ONE OF PIECE 25 FROM KNIT REMNANT

Sewing Directions

FABRIC KEY RIGHT SIDE WRONG SIDE INTERFACING LINING LINING

Read **General Directions** before you begin.

Sewing methods in **BOLD TYPE** have Sewing Tutorial Video available. Scan **QR CODE** to watch videos:

EDGE STITCH – Stitch close to finished edge or seam.

SLIPSTITCH – See **Hand Stitching: "how to slip stitch"** video.

TRIM SEAM – See **Seams: "how to trim, clip and layer seams"** video.

Sewing methods shown in **BOLD** are defined below:

EASE/GATHER – Stitch 1/4" (6mm) from cut edge using a long stitch. Stitch again 1/8" (3mm) from the first stitching within the seam allowance.

FINISH – Stitch 1/4" (6mm) from raw edge and finish with zigzag stitches, overcast, overlock.

REMNANT – If pattern piece calls for lining, pin fabric and lining block with **WRONG** sides together and baste close to raw edge.

Pin pattern to **RIGHT** side of fabric remnant. Cut out each pattern piece. Transfer markings to **WRONG** side of fabric (and lining), using a washable fabric marking pen or pencil, using **WRONG** side of pattern tissue when required.

PATTERN PIECES WILL BE IDENTIFIED BY NUMBERS THE FIRST TIME THEY ARE USED.

STITCH 1/4" (6MM) SEAMS WITH RIGHT SIDES TOGETHER UNLESS OTHERWISE STATED

SEWING TUTORIALS

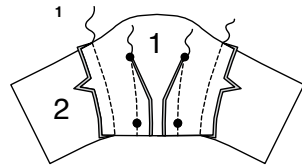


Build your skills viewing short, easy-to-follow videos at simplicity.com/sewingtutorials

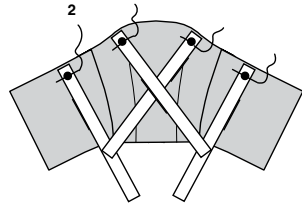
S3124

2 of 5

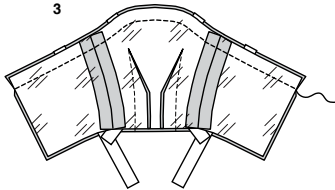
DRESS A



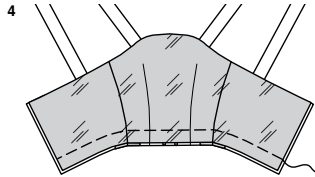
1. Cut BODICE FRONT (1) and BODICE BACK (2) fabric and lining pieces from a REMNANT. With RIGHT sides together and raw edges even, pin bodice front to bodice back at side edges. Stitch. To make dart seams on front, on INSIDE, bring broken lines together, matching small dots. Stitch along broken line from raw edge to the point. Press dart toward center.
Make bodice lining in the same manner.



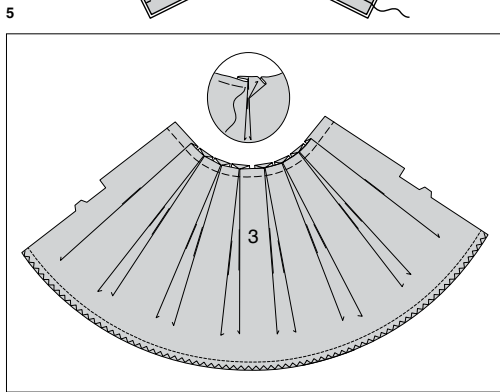
2. For optional shoulder straps, cut four pieces of 1/4" (6mm) ribbon, 5" (12.5cm) long. On OUTSIDE, pin one end of each to bodice over small dots with raw edges even. Baste in place a scant 1/4" (6mm) from raw edge.



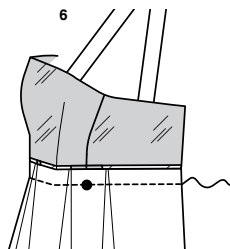
3. With RIGHT sides together and raw edges even, pin bodice lining to bodice (over ribbon). Stitch upper edge.



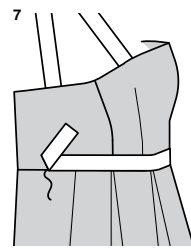
4. Turn bodice; press. Baste lower edges together.



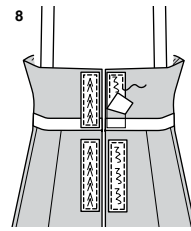
5. FINISH lower edge of SKIRT (3). To make pleats on skirt, fold along solid lines; press. Bring folds to broken lines. Baste in place a scant 1/4" (6mm) from raw edge. Press upper edge lightly with steam.



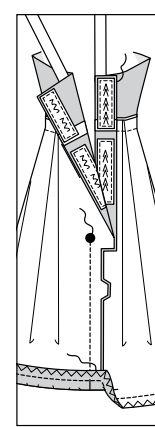
6. With RIGHT sides together and raw edges even, pin skirt to bodice, matching centers, placing small dots at side seams. Stitch. Press seam toward bodice.



7. Cut a piece of 1/4" (6mm) ribbon the length of the waist seam. On OUTSIDE, pin ribbon to bodice with lower edge of ribbon along seam line. SLIPSTITCH in place along lower edge, invisibly.

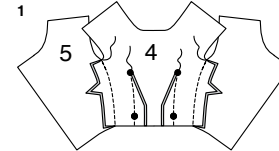


8. Cut two pieces of hook and loop tape the length of the back opening rectangles. Separate the tape. On OUTSIDE, pin loop sections to RIGHT half of opening and hook sections to LEFT half of opening along solid lines. EDGESTITCH close to edges of tape.

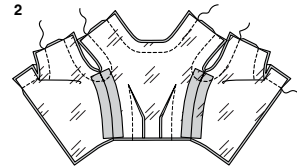


9. Stitch center back edges of dress from lower edge to large dot, back-stitching at dot to reinforce the seam. Press seam and LEFT back edge along center toward LEFT side. SLIPSTITCH LEFT back edge of bodice in place, invisibly. Press up finished hem edge 1/2" (1.3cm). SLIPSTITCH in place, easing in fullness. Dress doll. Make bows from each pair forming shoulder straps, and trim ends, diagonally, as shown on envelope.

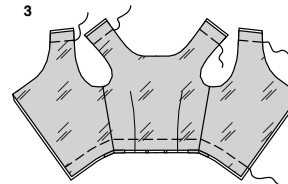
DRESS B, C



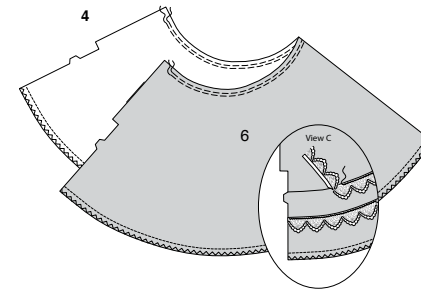
1. Cut BODICE FRONT (4) and BODICE BACK (5) fabric and lining pieces from a REMNANT. With RIGHT sides together and raw edges even, pin bodice front to bodice back at side edges. Stitch. To make darts on front, on INSIDE, bring broken lines together, matching small dots. Stitch along broken line from wide end to the point. Press dart toward center.
Make bodice lining in the same manner.



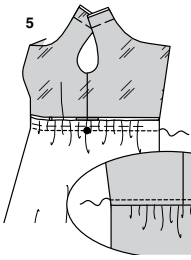
2. With RIGHT sides together and raw edges even, pin bodice lining to bodice. Stitch neck and armhole edges. TRIM SEAM.



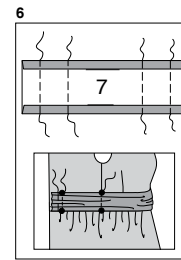
3. Turn bodice; press. Baste across lower and shoulder edges.



4. FINISH lower edge of SKIRT (6). GATHER upper edge of skirt between centers back.
FOR VIEW C - On OUTSIDE, pin 5/8" (1.5cm) lace to skirt with straight edge of lace along placement line. Stitch close to straight edge, using a 1/8" (3mm) wide zigzag stitch or straight stitch.



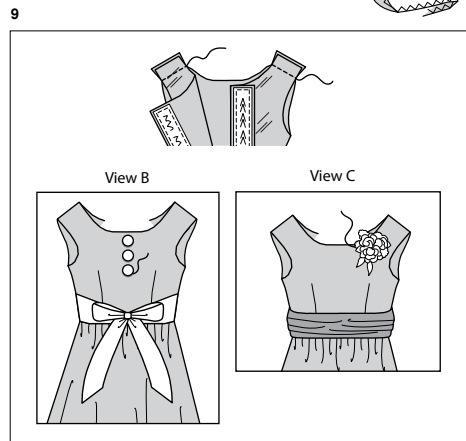
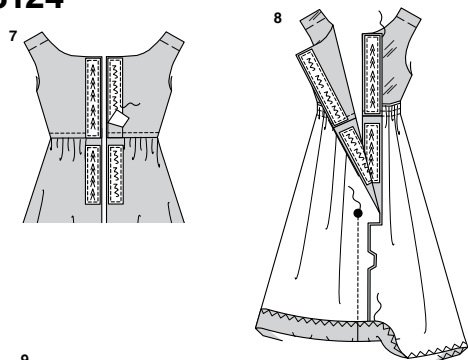
5. With RIGHT sides together and raw edges even, pin skirt to bodice, matching centers, placing small dots at side seams, pulling up gathering stitches to fit. Stitch. Press seam toward bodice. On OUTSIDE, EDGESTITCH bodice 1/8" (3mm) from seam.



6. FOR VIEW C - Press under long edges of CUMMERBUND (7) 1/4" (6mm). Gather along gathering lines with a single row of long machine stitches. On OUTSIDE, pin cummerbund to bodice, matching small dots, pulling up gathering stitches to fit. Stitch in place along gathering stitches. Baste raw edges together.

S3124

3 of 5



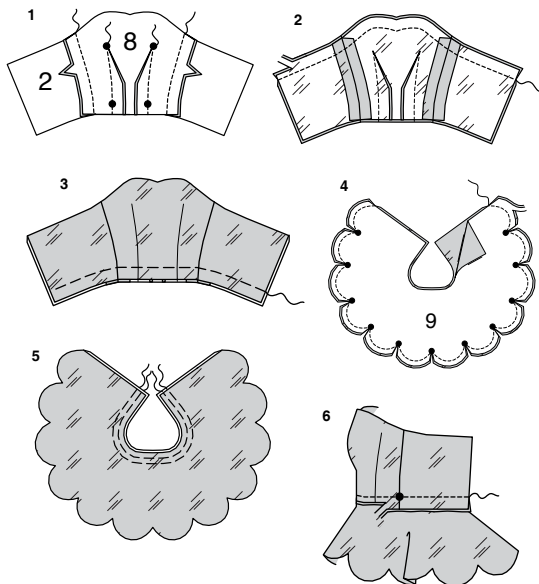
CONTINUE AS FOLLOWS FOR BOTH VIEWS

- Cut two pieces of hook and loop tape the length of the back opening rectangles. Separate the tape. On OUTSIDE, pin loop sections to RIGHT half of opening and hook sections to LEFT half of opening along solid lines. **EDGESTITCH** close to edges of tape.
- Stitch center back edges of dress from lower edge to large dot, back-stitching at dot to reinforce the seam. Press seam and LEFT back edge along center toward LEFT side. **SLIPSTITCH** LEFT back edge of bodice in place, invisibly. Press up finished hem edge 1/2" (1.3cm). **SLIPSTITCH** in place, easing in fullness.

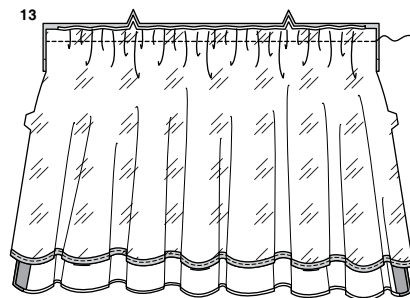
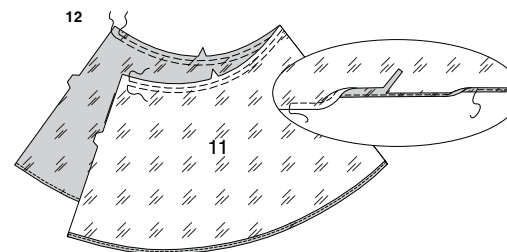
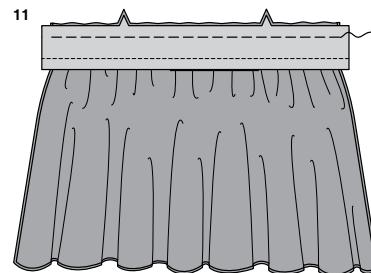
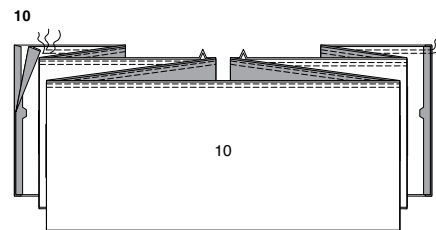
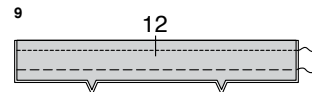
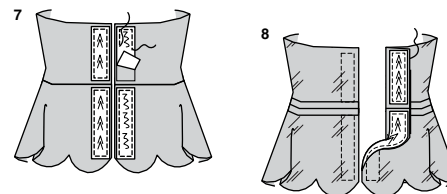
- With RIGHT sides together and raw edges even, stitch shoulder edges.
FOR VIEW B – Sew 1/8" (3mm) shank buttons to bodice front at small dots. Cut a piece of 5/8" (1.5cm) wide ribbon, 20" (51cm) long; trim ends diagonally. Dress doll. Wrap ribbon to waist and tie into a bow, as shown on envelope.
FOR VIEW C – Hand tack one small ribbon rosette to upper LEFT side of bodice, as shown on envelope.

BUSTIER AND SKIRT D

BUSTIER



- Cut BODICE FRONT (8) and BODICE BACK (2) fabric and lining pieces from a REMNANT. With RIGHT sides together and raw edges even, pin bodice front to bodice back at side edges. Stitch. To make dart seams on front, on INSIDE, bring broken lines together, matching small dots. Stitch along broken line from raw edge to the point. Press dart toward center. Make bodice lining in the same manner.
- With RIGHT sides together and raw edges even, pin bodice lining to bodice. Stitch upper edge, pivoting with needle in fabric at center front. **TRIM SEAM.**
- Turn bodice; press. Baste lower edges together.
- With RIGHT sides together and raw edges even, pin peplum to lining, matching small dots. Stitch along scalloped edge, pivoting with needle in fabric at small dots. **TRIM SEAM**, clipping to stitching at small dots.
- Turn peplum; press. **EASE** stitch upper edges together.
- With RIGHT sides together and raw edges even, pin peplum to bodice, matching centers, placing small dots at side seams, pulling up ease stitches to fit. Stitch. **TRIM SEAM.** Press seam open.



- Cut two pieces of hook and loop tape the length of the back opening rectangles. Separate the tape. On OUTSIDE, pin loop sections to RIGHT half of opening and hook sections to LEFT half of opening along solid lines. **EDGESTITCH** close to edges of tape.
- Press LEFT back opening edge to INSIDE at center back. **SLIPSTITCH** in place, invisibly.

SKIRT

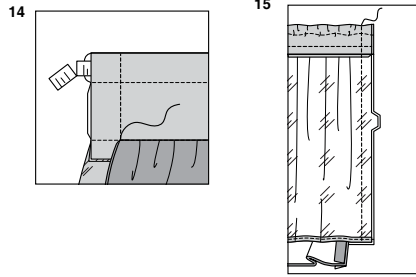
- Fold YOKE (12) in half, lengthwise with WRONG sides together. To form casing for elastic, stitch along stitching line. Baste along lower edge.

- Press under center back edges of each SKIRT (10) section. Pin WRONG side of outer skirt to the RIGHT side of inner skirt, matching pressed edges and notches. Baste. **GATHER** upper edge between pressed edges.

- With RIGHT sides together and raw edges even, pin skirt to yoke, matching centers, notches, and pressed edges of skirt to seamlines on yoke. Pull up gathering stitches to fit. Baste.

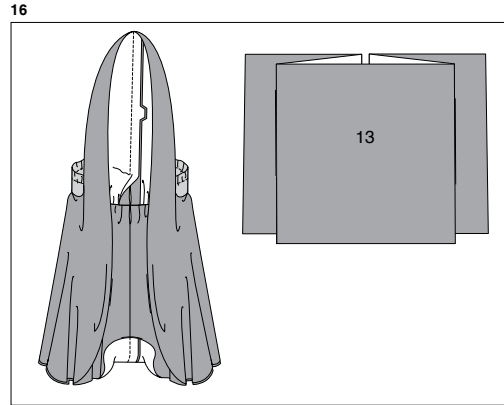
- GATHER** upper edge of UNDERSKIRT (11) between back seamlines. To make narrow hem, press under 1/4" (6mm) on lower edge. Stitch close to pressed edge. Trim close to stitching. Press under another 1/8" (3mm) and stitch in place.

- With RIGHT sides together and raw edges even, pin underskirt to yoke (over WRONG side of skirt sections), matching centers and notches, pulling up gathering stitches to fit. Stitch. Press seam toward skirt, pressing out the yoke.



14. Cut a piece of 1/8" (3mm) elastic 4-1/2" (11.5cm) long. Thread elastic through casing. Stitch across ends.

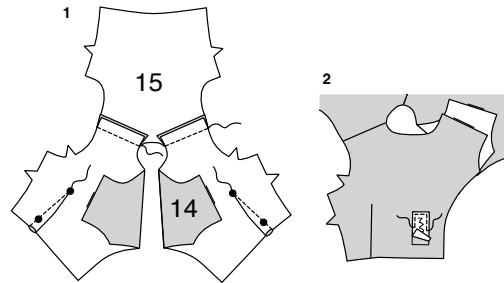
15. Stitch center back edges of underskirt and yoke, being careful not to catch in press edges of skirt sections.



16. On **OUTSIDE**, pull up each skirt section separately and stitch center back edges together on the **UNDERSIDE**, as far as possible. Press seams to one side. Dress doll in bustier and skirt, accessorizing outfit with **WRAP** (13) as shown on envelope.

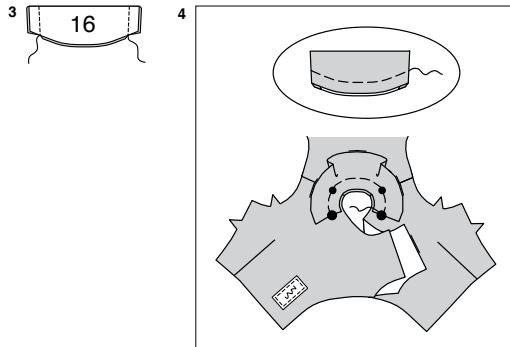
JACKET AND SKIRT E

JACKET



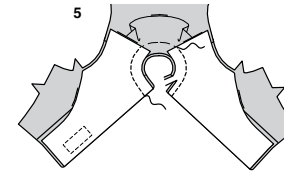
1. With **RIGHT** sides together and raw edges even, pin **JACKET FRONT** (14) to **JACKET BACK** (15) at shoulder edges. Stitch. To make darts on front, on **INSIDE**, bring broken lines together, matching small dots. Stitch along broken line from wide end to the point. Press dart toward center.

2. Cut a piece of hook and loop tape the length of the front facing rectangle. Separate the tape. On **OUTSIDE**, pin loop section to **RIGHT** half of facing along solid lines. **EDGESTITCH** close to edges of tape. (Hook section will be stitched to **LEFT** half of front when finishing.)

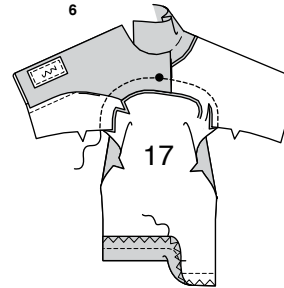


3. Fold **COLLAR** (16) along foldline with **RIGHT** sides together. Stitch ends. **TRIM SEAM.**

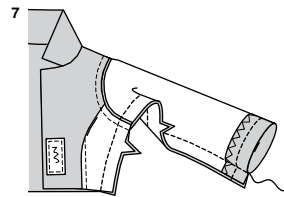
4. Turn collar; press. Baste raw edges together. On **OUTSIDE**, pin collar to jacket, matching large dots, placing small dots at shoulder seams. Baste.



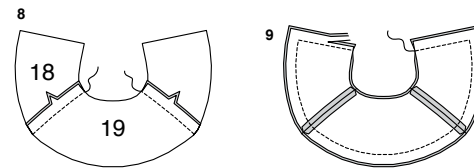
5. Turn front facing to the **OUTSIDE** along foldline. Stitch neck edge. **TRIM SEAM.**



6. Turn facing to **INSIDE**; press, pressing out collar. **FINISH** lower edge of **SLEEVE** (17). Press up finished hem edge 1/2" (1.3cm). **SLIPSTITCH** in place, invisibly. With **RIGHT** sides together and raw edges even, pin sleeve to armhole edge, matching notches, placing small dot at shoulder seam. Stitch, catching in armhole edge of facing. **TRIM SEAM.** Press seam toward sleeve.

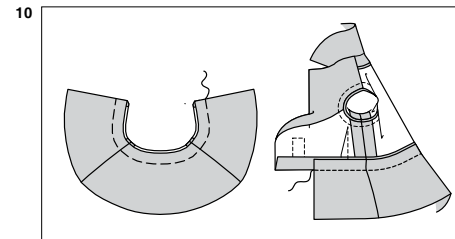


7. Stitch front to back at entire underarm seam, matching armhole seams and notches. **TRIM SEAM.**

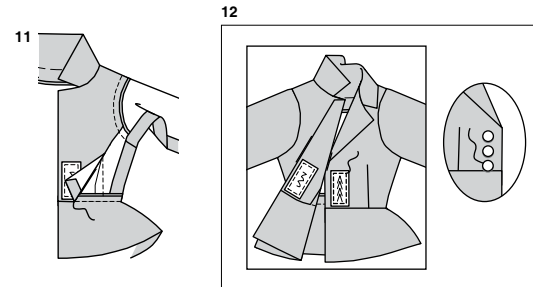


8. With **RIGHT** sides together and raw edges even, pin **FRONT PEPLUM** (18) sections to **BACK PEPLUM** (19) at side edges, matching notches. Stitch. **TRIM SEAM.** Stitch side edges of peplum facing in the same manner.

9. With **RIGHT** sides together and raw edges even, pin facing to peplum, matching seams. Stitch, leaving upper edge open for turning. **TRIM SEAM.**



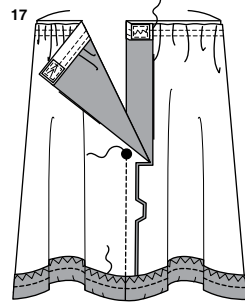
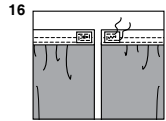
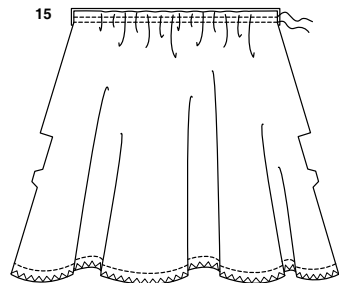
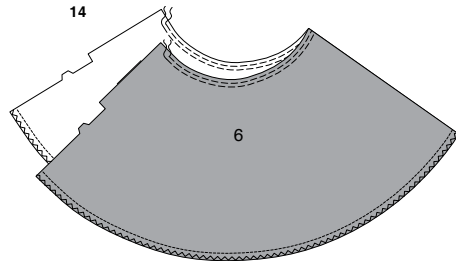
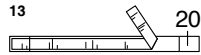
10. Turn peplum; press. Baste raw edges together. Open out the lower edge of front facing. On **OUTSIDE**, pin peplum to jacket, matching centers and seams. Stitch. **TRIM SEAM.** Press seam and lower edge of front facing toward jacket along seamline.



11. On **INSIDE**, pin pressed lower edge of facing over seam. **SLIPSTITCH** in place, invisibly.

12. Lightly press lapel along roll line. Lap **RIGHT** front of jacket over **LEFT**, matching centers. Pin hook section of tape to **LEFT** front, under loop section and **EDGESTITCH** in place. Sew buttons to **RIGHT** front at small dots.

SKIRT



13. Cut a piece of 3/8" (1cm) grosgrain ribbon the length of the GUIDE FOR WAISTBAND (20). Transfer markings.

14. FINISH lower edge of SKIRT (6). GATHER upper edge of skirt between centers back.

15. Pin upper edge of skirt to upper edge of ribbon, matching centers, pulling up gathering stitches to fit. Stitch along lower edge and center of ribbon.

16. Cut a piece of hook and loop tape 3/8" (1cm) long. Separate the tape. On OUTSIDE, pin loop section to RIGHT half of opening and hook section to LEFT half of opening along ribbon. EDGESTITCH close to edges of tape.

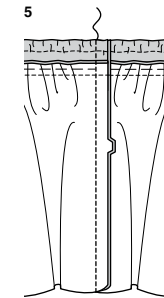
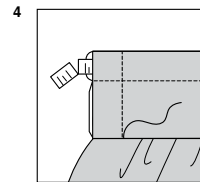
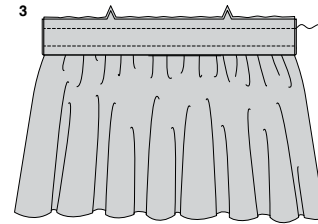
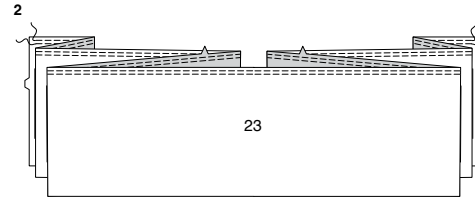
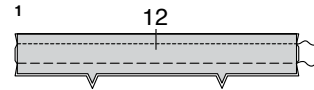
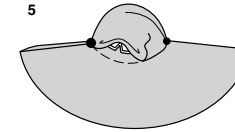
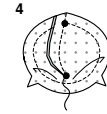
17. Stitch center back edges of skirt from lower edge to large dot, back-stitching at dot to reinforce the seam. Press seam and LEFT back edge along center toward LEFT side. SLIPSTITCH LEFT back edge of ribbon in place, invisibly. Press up finished hem edge 1/2" (1.3cm). SLIPSTITCH in place, easing in fullness.

HAT F

1. Pin interfacing to WRONG side of BRIM (21) and CROWN (22). Fuse interfacing in place following manufacturer's directions.

2. Stitch center back edges of BRIM (21), matching notches. Make brim facing in the same manner. With RIGHT sides together and raw edges even, pin brim to facing, matching seams and notches. Stitch outer edge. TRIM SEAM.

3. Turn brim through center opening; press. Baste raw edges together.



4. Machine-stitch along seamline on notched edge of CROWN (22). To make dart seam, on INSIDE, bring broken lines together, matching small dots. Stitch along broken line from raw edge to the point. Press dart open.

5. Press under outer edge of crown along stitching. On OUTSIDE, pin crown to brim, matching small dots, large dots, and notches. SLIPSTITCH in place, invisibly. As shown on envelope, if you prefer, trim hat with small ribbon rosettes tacked in place. If you prefer, lap 5/16" (8mm) flat lace trim over outer edge of brim 1/16" (2mm), turning under end and lapping at center back, slipstitching in place, invisibly.

PETTICOAT G

1. Fold YOKE (12) in half, lengthwise with WRONG sides together. To form casing for elastic, stitch along stitching line. Baste along lower edge.

2. GATHER upper edge of PETTICOAT (23) between back seamlines.

3. With RIGHT sides together and raw edges even, pin petticoat to yoke, matching centers and notches, pulling up gathering stitches to fit. Stitch. Press seam toward yoke, pressing out the yoke.

4. Cut a piece of 1/8" (3mm) elastic 4-1/2" (11.5cm) long. Thread elastic through casing. Stitch across ends, securely.

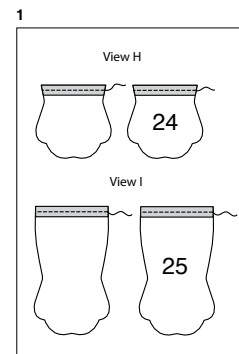
5. Stitch center back edges of petticoat and yoke.

GLOVES H, I

1. To make gloves, press under 1/4" (6mm) on straight edge of each glove, using GLOVES (24) for View H, or GLOVES (25) for View I. Stitch a scant 1/8" (3mm) from pressed edge.

2. Fold each glove in half, lengthwise, having Right sides together and raw edges even. Stitch along broken lines. TRIM SEAM.

3. Turn glove; press. Use gloves to accessorize garment, as shown on envelope.





Congrats!

You've completed your sewing adventure

SHARE YOUR LOOK



Post your pattern and tag us using [#simplicitypatterns](#)
[@simplicity_creative_group](#)
[@simplicitymccallsuk](#)
[@simplicitymccallsaustralia](#)
for a chance to be featured on our social media.

Look for more PDF patterns at [simplicity.com](#) or for customers outside the U.S. and Canada visit [sewdirect.com](#) and [sewdirect.com.au](#)

Have a question or need help with your sewing project contact us:
[Simplicity.com](#) [Sewdirect.com](#) [Sewdirect.com.au](#)

Simplicity
by design