

S3122

Simplicity®



easy-to-sew



Shop all the pattern brands you love @

Simplicity®.com

For customers outside of the U.S. and Canada

sewdirect.com

sewdirect.com.au

Easy

**15" (38cm) MEMORY PLUSH ANIMALS WITH WINGS**

**Suggested Fabrics:** Chintz, Cotton Types, Flannel, Fleece, Linen Types, Minky Fleece, Novelty Knit Fabrics, Velveteen. **A,B,C Contrast 2 (Wings) also in Satin, Taffeta. Appliqués A,B,C in Felt, Wool Felt. Interfacing 1:** Lightweight Fusible. **Interfacing 2:** Sew-in Foam Stabilizer.

**Notions:** A,B,C: Polyfiberfill, pair of 14mm safety eyes, 6" (15cm) length of ½" (1.3cm) hook and loop tape, ¾ yd. (0.3m) of ¼" (6mm) featherweight boning, embroidery floss, fabric glue.

**A,B,C Contrast 1 (Arm, Leg, Inner Ears):** 45"\* - ¾ yd. (115cm\* - 0.3m)

**A,B,C Contrast 2 (Wings):** 45"\* - ½ yd. (115cm\* - 0.5m)

**A,B,C Interfacing 2:** 20" - ½ yd. (51cm - 0.3m)

**Heart Appliqué A,B,C:** 3" (8cm) square remnant

**Bear A**

45"\* - ½ yd. (115cm\* - 0.5m)

**A,C Nose Appliqué:** 3" (8cm) square remnant

**A,C Interfacing 1:** 20" - 1½ yds. (51cm - 1.5m)

**Paper-backed fusible web A,C:** 3" x 6" (8cm x 15cm) remnant

**Kitty B**

45"\* - ½ yd. (115cm\* - 0.5m)

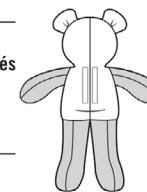
**Interfacing 1:** 20" - 1½ yds. (51cm - 1.4m)

**Paper-backed fusible web:** 3" (8cm) square remnant

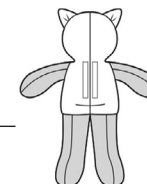
**Puppy C**

45"\* - ½ yd. (115cm\* - 0.5m)

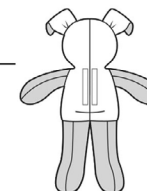
**Tongue:** 2" x 3" (5cm x 8cm) remnant



A



B



C

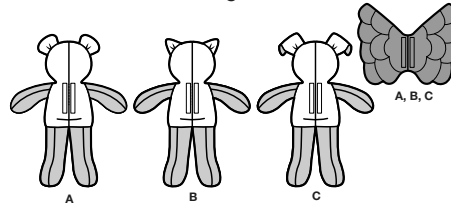
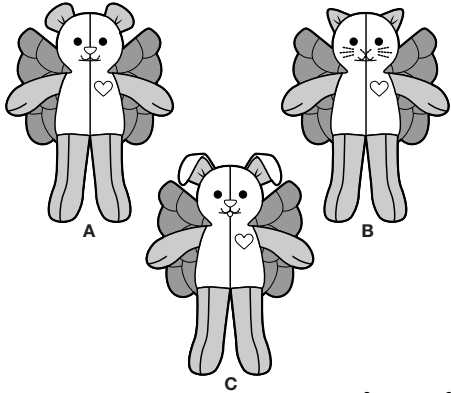


A,B,C

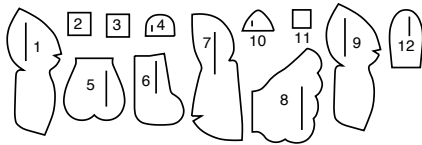
\*with nap \*\*without nap

# Simplicity® S3122

Thank you for purchasing this Simplicity pattern.  
We made every effort to provide you with a high quality product.

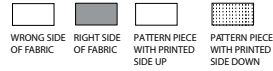


12 PIECES



- 1 BODY FRONT - A,C
- 2 HEART APPLIQUE - A,B,C
- 3 NOSE APPLIQUE - A,C
- 4 EAR - A
- 5 ARM - A,B,C
- 6 LEG - A,B,C
- 7 BODY BACK - A,B,C
- 8 WING - A,B,C
- 9 BODY FRONT - B
- 10 EAR - B
- 11 TONGUE - C
- 12 EAR - C

## Cutting Layouts



POSITION OF PATTERN PIECES MAY VARY  
SLIGHTLY ACCORDING TO YOUR PATTERN SIZE

### General Directions For Cutting

**PRE-SHRINK** and iron all fabric.

**FOR DOUBLE THICKNESS** -Fold fabric with **RIGHT** sides together. Pin pattern to **WRONG** side of fabric.

**FOR SINGLE THICKNESS** -Pin pattern to **RIGHT** side of fabric.

★ If layout shows a piece extending past fold, cut out all pieces except piece that extends. Open out fabric to single thickness. Cut extending piece on **RIGHT** side of fabric in position shown.

✱ Mark small arrows along both selvages in dictating direction of nap or design. Fold fabric crosswise with **RIGHT** sides together, and cut along fold. Turn one fabric layer around so arrows on both layers go in the same direction. Place **RIGHT** sides together.

### BEAR A (HEAD, BODY, EARS)

USE PIECES 1 4 7

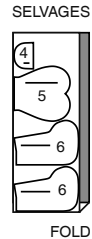
45" 60" (115CM-150CM)  
WITH NAP



### CONTRAST 1A (ARMS, LEGS, INNER EARS)

USE PIECES 4 5 6

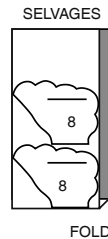
45" 60" (115CM-150CM)  
WITH NAP



### CONTRAST 2A, 2B, 2C (WINGS)

USE PIECE 8

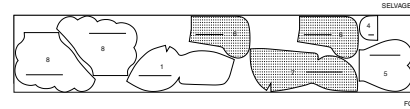
45" 60" (115CM-150CM)  
WITH NAP



### INTERFACING 1A

USE PIECES 1 4 5 6 7 8

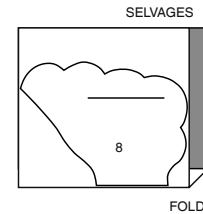
20" (51CM)



### INTERFACING 2A, 2B, 2C

USE PIECE 8

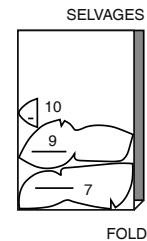
20" (51CM)



### KITTY B (HEAD, BODY, EARS)

USE PIECES 7 9 10

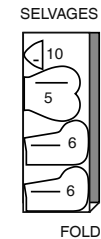
45" 60" (115CM-150CM)  
WITH NAP



### CONTRAST 1B (ARMS, LEGS, INNER EARS)

USE PIECES 5 6 10

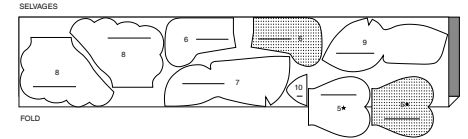
45" 60" (115CM-150CM)  
WITH NAP



### INTERFACING 1B

USE PIECES 5 6 7 8 9 10

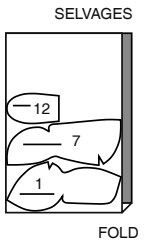
20" (51CM)



### PUPPY C (HEAD, BODY, EARS)

USE PIECES 1 7 12

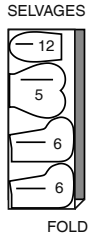
45" 60" (115CM-150CM)  
WITH NAP



### CONTRAST 1C (ARMS, LEGS INNER EARS)

USE PIECES 5 6 12

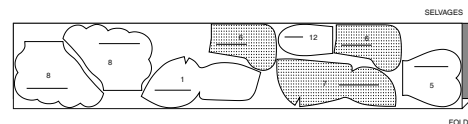
45" 60" (115CM-150CM)  
WITH NAP



### INTERFACING 1C

USE PIECES 1 5 6 7 8 12

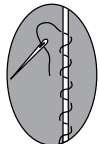
20" (51CM)



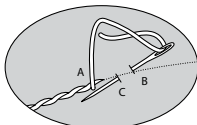
## SEWING TUTORIALS



Build your skills viewing short, easy-to-follow videos at [simplicity.com/sewingtutorials](http://simplicity.com/sewingtutorials)



LADDER STITCH



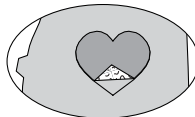
OUTLINE STITCH



STUFF



PREPARE APPLIQUE



APPLY APPLIQUE

## Sewing Directions

FABRIC  
KEY



Techniques shown in **BOLD** are defined below:

**EDGESTITCH** - Stitch close to finished edge or seam.

**INTERFACING** - Pin interfacing to **WRONG** side of fabric. Fuse interfacing in place following manufacturer's directions.

**SLIPSTITCH** - Slide needle through a folded edge, then pick up a thread of underneath fabric.

**LADDER STITCH** - Using a strong thread, take a small stitch in one edge close to seam. Then take a small stitch in the other edge close to seam. Pull up thread after each stitch to bring edges together. Continue to alternate from edge to edge with the smallest hand-stitches possible. Knot thread securely at end of stitching.

**OUTLINE STITCH** - For outline stitching, work with as many threads as desired and use a large eyed needle. Bring thread to **RIGHT** side at A, down at B, up at C, etc. Always hold thread in the same position either all above or all below the needle for an even line.

**STUFF** - Pull fiberfill apart and fluff it before you use it. Break apart the lumps and thick spots. Use pieces about the size of a tennis ball. Pack into place using the end of a long handled wooden spoon or chop-stick. Pack firmly in place each time stuffing is added. Use both hands to mold and shape, being careful not to over stuff or make lopsided.

## APPLIQUES

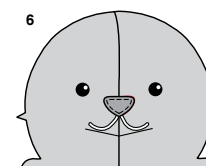
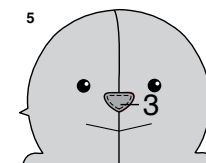
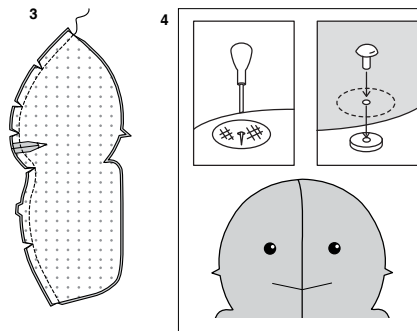
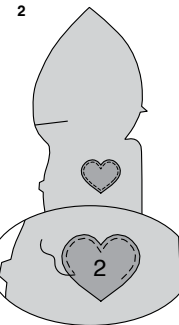
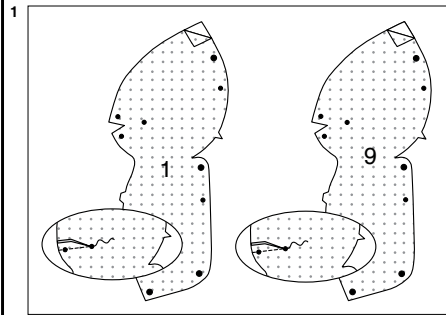
**PREPARE APPLIQUE** - Apply paper backed fusible web to **WRONG** side of applique fabric, following manufacturer's directions.

Pin pattern to **RIGHT** side of prepared fabric. Cut out each applique. Transfer markings to **RIGHT** side of applique using a washable fabric marking pen or pencil.

**APPLY APPLIQUE** - Pin applique to craft as instructed. A glue stick can be used to temporarily hold the applique in place before fusing. Fuse appliques in place, following manufacturer's directions.

## SIMPLY THE BEST TECHNIQUES FOR SEWING FLEECE

- Fleece fabric is strong, hard to puncture or tear and doesn't ravel or get pilly.
- Since cut edges of fleece fabrics do not ravel, inner edges of seams and hems can be left raw. When pinning pieces together, use long pins...the kind with bead heads are best because short pins tend to get lost in the fleece.
- When stitching, try using a narrow zig-zag stitch, adjusting the width and length for the type of fleece you are using. Always test first on some scraps and keep for reference.
- Sew slowly and carefully the first time you stitch a seam as stitches are hard to remove.
- To prevent shoulder seams from stretching, pin center of hem tape or twill tape along seam line on front shoulder edges, then stitch the shoulder seams.
- When sewing around shaped areas sew slowly being careful not to stretch the fleece as you feed fabric through your machine.
- Finger press or steam press on a low temperature setting using a press cloth.
- Raw edges can also be cut with pinking shears.
- Stitch hems in place 1/4" (6mm) from raw edge.



PATTERN PIECES WILL BE IDENTIFIED BY NUMBERS THE FIRST TIME THEY ARE USED.

STITCH 3/8" (1CM) SEAMS, WITH RIGHT SIDES TOGETHER UNLESS OTHERWISE STATED.

## BEAR A, KITTY B, PUPPY C

**NOTE:** Under each sub-heading, the first View will be illustrated, unless otherwise indicated

## FRONT

1. Apply **INTERFACING** to BODY FRONT (1) or BODY FRONT (9). Stitch **DART SEAM**.

2. **PREPARE APPLIQUE** HEART APPLIQUE (2). **APPLY APPLIQUE** heart to **OUTSIDE** of left body front along marking. Stitch heart applique close to raw edge.

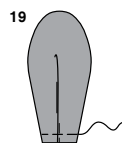
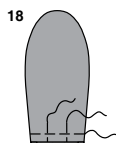
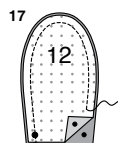
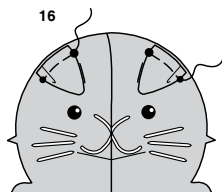
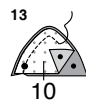
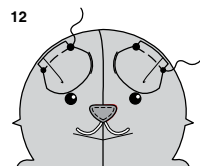
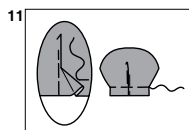
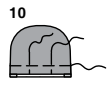
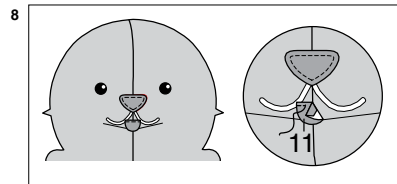
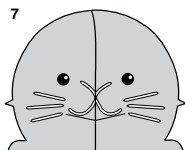
3. With **RIGHT** sides together, pin body front sections together at center front seam, matching notches, as shown. Stitch. **CLIP CURVES**.

4. On **OUTSIDE**, apply safety eyes to head front at small dots, following manufacturer's instructions.

## FOR VIEWS A, C-

5. **PREPARE APPLIQUE** NOSE APPLIQUE (3). **APPLY APPLIQUE** nose to **OUTSIDE** of front head along marking. Stitch nose applique close to raw edge.

6. **OUTLINE STITCH** along lines for mouth.



## FOR VIEW B-

7. **OUTLINE STITCH** along lines for nose, mouth and whiskers.

## FOR VIEW C-

8. Press under 1/8" (3mm) on straight edge of TONGUE (11). On OUTSIDE, pin tongue to head front, placing pressed edge along marking, as shown. **EDGESTITCH** pressed edge.

## EARS, ARMS AND LEGS

## FOR VIEW A-

9. Apply **INTERFACING** to EAR (4). For each ear, with RIGHT sides together, pin two ear sections together. Stitch, leaving end with small and large dots open. Trim seam.

10. Turn RIGHT side out. Press. Baste raw edges and along pleat lines, as shown.

11. To make pleat in ear, on OUTSIDE, crease along solid line. Bring crease to broken line. Pin. Baste across lower edge. Press.

12. On OUTSIDE, pin ears to head, matching small and large dots, having raw edges even and inner ear facing down. Baste.

## FOR VIEW B-

13. Apply **INTERFACING** to EAR (10). For each ear, with RIGHT sides together, pin two ear sections together. Stitch, leaving end with small and large dots open. Trim seam.

14. Turn RIGHT side out. Press. Baste raw edges and along pleat lines, as shown.

15. To make pleat in ear, on OUTSIDE, crease along solid line. Bring crease to broken line. Pin. Baste across lower edge. Press.

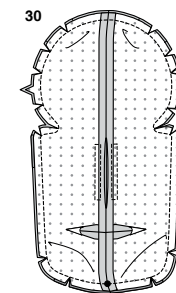
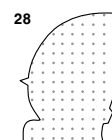
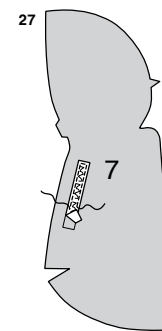
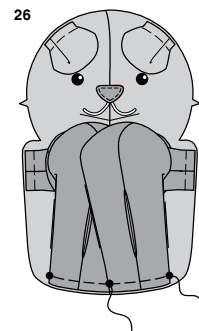
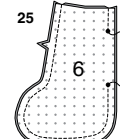
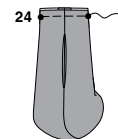
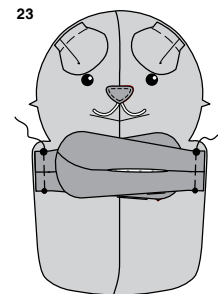
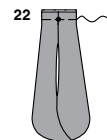
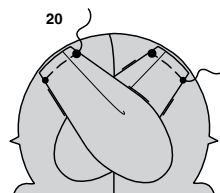
16. On OUTSIDE, pin ears to head, matching small and large dots, having raw edges even and inner ear facing down. Baste.

## FOR VIEW C-

17. Apply **INTERFACING** to EAR (12). For each ear, with RIGHT sides together, pin two ear sections together. Stitch, leaving end with small and large dots open. Trim seam.

18. Turn RIGHT side out. Press. Baste raw edges and along pleat lines, as shown.

19. To make pleat in ear, on OUTSIDE, crease along solid line. Bring crease to broken line. Pin. Baste across lower edge. Press.



20. On OUTSIDE, pin ears to head, matching small and large dots, having raw edges even and inner ear facing down. Baste.

## CONTINUE AS FOLLOWS FOR ALL VIEWS

21. Apply **INTERFACING** to ARM (5). For each arm, with RIGHT sides together, fold arm in half lengthwise, matching small dots, having raw edges even. Stitch, leaving open between small dots. Trim seams.

22. Turn RIGHT side out. Fold arm along foldlines. Baste upper raw edges, as shown.

23. On OUTSIDE, pin arms to body front, matching small and large dots, having raw edges even. Baste.

24. Apply **INTERFACING** to LEG (6). For each leg, with RIGHT sides together, pin two leg sections together. Stitch, leaving open between small dots. Trim seams.

25. Turn RIGHT side out. Fold leg along foldlines. Baste upper raw edges, as shown.

26. On OUTSIDE, pin legs to body front, matching large dots, having raw edges even. Baste.

## BACK AND FINISHING

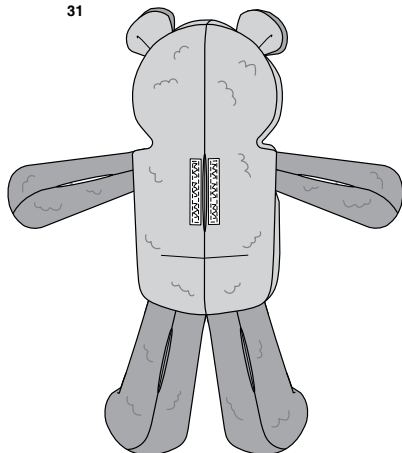
27. Cut two pieces of hook and loop tape 3" (7.6cm) long. Separate tape. On OUTSIDE, center one loop (soft) section of tape within marking on each BODY BACK (7) section, as shown. Stitch close to outer edges of tape. **NOTE:** Hook (hard) section of tape will be used for wings.

28. Stitch **DART SEAM** in body back.

29. With RIGHT sides together, pin body back sections together at center back seam, matching notches, leaving open between small dots. Stitch. **CLIP CURVES.**

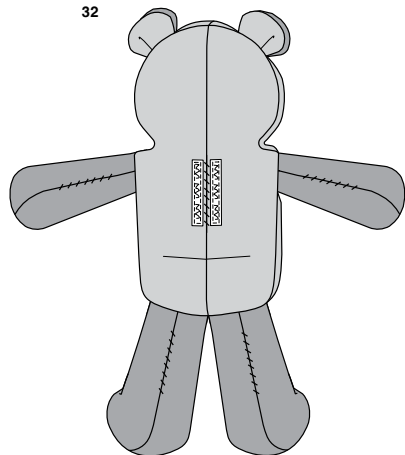
30. With RIGHT sides together pin body front to body back, matching small and large dots, having raw edges even. Stitch outer edges. **CLIP CURVES** and to inner corners, as shown.

31



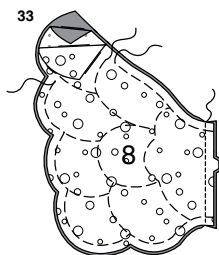
**31.** Turn RIGHT side out. **STUFF** plush firmly, lightly stuffing leg joints and arm joints to allow for easy movement.

32

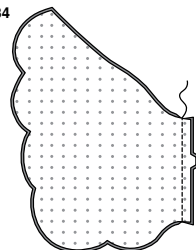


**32.** LADDER STITCH openings closed.

33



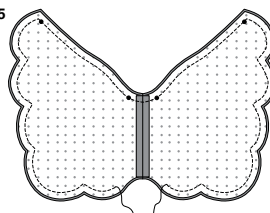
34



**33.** Apply **INTERFACING** to WING (8). On **WRONG** side, pin foam stabilizer to two wing sections. Baste raw edges and along stitching lines.  
Stitch together at center back seam.

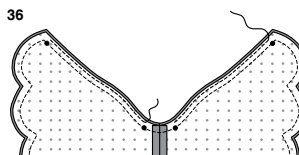
**34.** Stitch remaining wings together at center back seam.

35



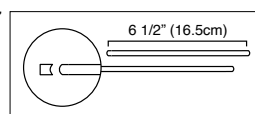
**35.** With **RIGHT** sides together, pin wing sections together, matching small dots, having raw edges even. Stitch, leaving an opening along lower edge for turning.

36



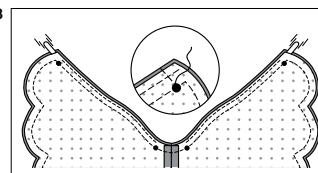
**36.** To form casings for boning, stitch seam allowances together, 1/8" (3mm) from raw edge, between small dots, as shown.

37



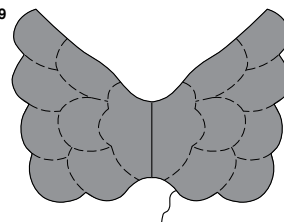
**37.** Cut two pieces of boning 6 1/2" (16.5cm) long. Trim away 1/8" (3mm) of boning on ends, rounding edges, as shown.

38



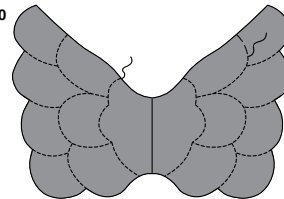
**38.** Insert boning into casings. Stitch across ends of each casing to small dots.

39



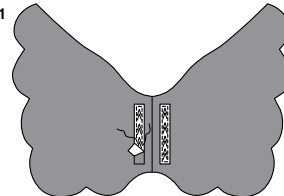
**39.** Turn wings **RIGHT** side out. Press. **SLIPSTITCH** opening.

40



**40.** Stitch along stitching lines; remove basting.

41



**41.** On **INSIDE**, center hook (hard) sections of tape within markings on wings, as shown. Stitch close to outer edges of tape.



# Congrats!

You've completed your sewing adventure

---

## SHARE YOUR LOOK



Post your pattern and tag us using [#simplicitypatterns](#)  
[@simplicity\\_creative\\_group](#)  
[@simplicitymccallsuk](#)  
[@simplicitymccallsaustralia](#)  
for a chance to be featured on our social media.

Look for more PDF patterns at [simplicity.com](#) or for customers outside the U.S. and Canada visit [sewdirect.com](#) and [sewdirect.com.au](#)

Have a question or need help with your sewing project contact us:  
[Simplicity.com](#)    [Sewdirect.com](#)    [Sewdirect.com.au](#)



Simplicity ©2025 a division of IG Design Group Americas Inc. • Atlanta, GA 30342 USA [www.thedesigngroup.com](#) • All Rights Reserved. [www.simplicity.com](#) • Made in the U.S.A. Fabriqué aux États-Unis.  
To be used for individual private home use only and not for commercial or manufacturing purposes. • A usage privé seulement et non à des fins commerciales ou de production en série. • Para uso privado solamente, no se puede utilizar con propósitos de comercialización o de producción en serie.