

S3121

Simplicity®



Designed and printed in USA.

easy-to-sew



Shop all the pattern brands you love @

Simplicity®.com

For customers outside of the U.S. and Canada

sewdirect.com

sewdirect.com.au

Use the 1 inch (2.54cm) box to ensure you are using rule at 100%

Utilisez la boîte de 2.54 cm pour vous assurer d'utiliser la règle à 100%.

Utilizar un cuadrado de 2.54 cm para asegurarse de estar usando la regla al 100%.

PICK-A-KNIT® RULE

FOR THIS PATTERN - 4" (10 cm) OF KNIT FABRIC MUST STRETCH CROSSWISE FROM HERE
POUR CE PATRON - LE JERSEY DOIT S'ÉTIRER DANS LA LARGEUR DE 4" (10 cm) DEPUIS ICI
PARA ESTE PATRON - LAS MALLAS DEBEN ESTIRARSE A LO ANCHO POR 4" (10 cm) DESDE AQUÍ

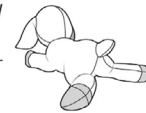


TO HERE 50%
JUSQUE LA 50%
HASTA ALLA 50%



When using the Pick-A-Knit® rule to measure your fabrics stretch capacity, rule must be viewed or printed at 100%.
Quand vous utilisez la règle Pick-A-Knit® pour mesurer la capacité d'élasticité des tissus, la règle doit être visible ou imprimée à 100%.
Al utilizar la regla Pick-A-Knit® para medir la capacidad de elasticidad de las telas, la regla debe estar visible o impresa al 100%.

Easy



A



A



B



B

BABY GOAT PLUSHY AND ACCESSORIES

Suggested Fabrics: **A** and **A Contrast 1** in Fleece, Low Pile Synthetic Fur, Minky Fleece. **A Contrast 2** in Synthetic Leather. **Appliqués A** in Felt. **B** in Stretch Knits such as Interlock, Jerseys. See Pick-A-Knit® Rule. **Contrast B** in Knit or Stretchable Rib Knit. **Interfacing B:** Foam Stabilizer.

Notions: **A:** Polyfiberfill, one pair of pre-printed felt eyes, fabric glue. **Wreath Accessory (opt.):** ½ yd. (0.5m) of 26-gauge wrapped wire, 7 oz. (196 grams) skein of ⅜" (3mm) eyelash yarn, 7 oz. (196 grams) skein of multi-strand yarn, 1½ yds. (1.4m) of ⅜" (3mm) of satin ribbon in two colors. **B:** ¼ yd. (0.3m) of ½" (1.3cm) hook and loop tape, 1½ yds. (1.0m) of ⅜" (3mm) elastic, 1½ yds. (1.2m) of ¼" (6mm) ribbon, ¾ yd. (0.6m) of 1¼" (3cm) eyelet trim.

Goat Plush A

60"* - ½ yd. (150cm* - 0.5m)

Contrast 1 (Inner Ears): 7" x 8" (18cm x 21cm) fabric remnant**Contrast 2 (Hooves)**

60"* - ¼ yd. (150cm* - 0.2m)

Eye Patch Appliqué: 3" x 4" (8cm x 10cm) felt remnant**Nose Appliqué:** 3" (8cm) square felt remnant**Paper-backed fusible web:** 4" x 6" (10cm x 15cm) remnant**Onesie and Bonnet B**

60"* - ¾ yd. (150cm* - 0.6m)

Contrast (Neckband): 2" x 13" (5cm x 33cm) stretchable ribbed knit remnant**Interfacing (Bonnet):** 6" x 9" (15cm x 23cm) foam stabilizer remnant

*with nap **without nap

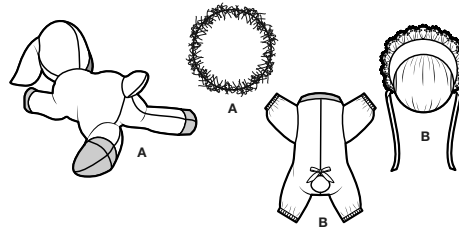
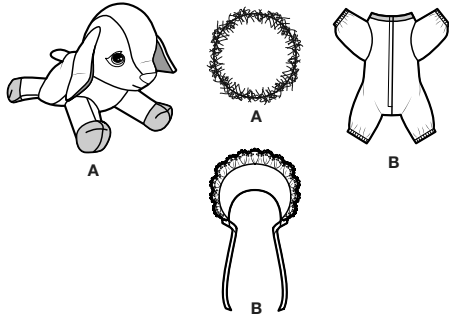
Simplicity
by design

Simplicity ©2025 a division of IG Design Group Americas Inc. • Atlanta, GA 30342 USA www.thedesigngroup.com • All Rights Reserved. www.simplicity.com • Made in the U.S.A. Fabriqué aux États-Unis.

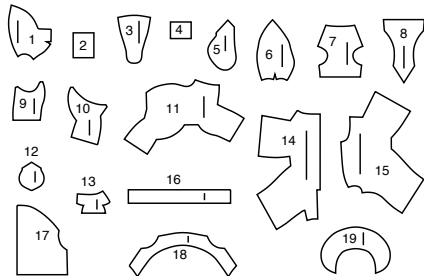
To be used for individual private home use only and not for commercial or manufacturing purposes. • A usage privé seulement et non à des fins commerciales ou de production en série. • Para uso privado solamente, no se puede utilizar con propósitos de comercialización o de producción en serie.

Simplicity® S3121

Thank you for purchasing this Simplicity pattern.
We made every effort to provide you with a high quality product.



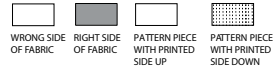
19 PIECES



1 HEAD FRONT - A
2 EYE PATCH APPLIQUE - A
3 HEAD CENTER FRONT - A
4 NOSE APPLIQUE - A
5 EAR - A
6 HEAD BACK - A
7 UPPER BODY FRONT - A
8 LOWER BODY FRONT - A
9 FRONT INNER LEG - A
10 BACK INNER LEG - A

11 BODY BACK - A
12 TAIL - A
13 HOOF - A
14 ONESIE FRONT - B
15 ONESIE BACK - B
16 ONESIE NECKBAND - B
17 BONNET BACK - B
18 BONNET BAND - B
19 BONNET BRIM - B

Cutting Layouts



POSITION OF PATTERN PIECES MAY VARY
SLIGHTLY ACCORDING TO YOUR PATTERN SIZE.

General Directions For Cutting

PRE-SHRINK and iron all fabric.

FOR DOUBLE THICKNESS -Fold fabric with **RIGHT** sides together.
Pin pattern to **WRONG** side of fabric.

FOR SINGLE THICKNESS -Pin pattern to **RIGHT** side of fabric.

★ If layout shows a piece extending past fold, cut out all pieces except piece that extends. Open out fabric to single thickness. Cut extending piece on **RIGHT** side of fabric in position shown.

✱ Mark small arrows along both selvages in direction of nap or design.
Fold fabric crosswise with **RIGHT** sides together, and cut along fold. Turn one fabric layer around so arrows on both layers go in the same direction. Place **RIGHT** sides together.

GOAT PLUSH A

USE PIECES 1 3 5 6 7 8 9 10 11 12

60" (150CM)
WITH NAP



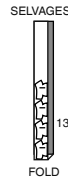
CONTRAST 1 (INNER EARS)

CUT TWO OF PIECE 5 FROM FABRIC REMNANT

CONTRAST 2 (HOOVES)

USE PIECE 13

60" (150CM)
WITH NAP



FOR EYE PATCH APPLIQUE

CUT ONE OF PIECE 2 FROM FELT REMNANT

FOR NOSE APPLIQUE

CUT ONE OF PIECE 4 FROM FELT REMNANT

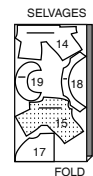
FOR PAPER BACKED FUSIBLE WEB

CUT ONE OF PIECES 2 4 FROM REMNANT

ONESIE AND BONNET B - SIZED FOR STRETCH KNIT ONLY

USE PIECES 14 15 17 18 19

60" (150CM)
WITH NAP



CONTRAST (NECKBAND)

CUT ONE OF PIECE 16 FROM STRETCHABLE RIBBED KNIT REMNANT

FOR INTERFACING (BONNET)

CUT ONE OF PIECE 19 FROM FOAM STABILIZER REMNANT

Sewing Directions

FABRIC KEY **RIGHT SIDE** **WRONG SIDE** **INTERFACING** **LINING** **FOAM STABILIZER**

Read **General Directions** before you begin.

Sewing methods in **BOLD TYPE** have Sewing Tutorial Video available.
Scan **QR CODE** to watch videos:

DOUBLE POINTED DART – See Darts: “sewing double pointed dart” video.

EDGE STITCH – See Machine Stitches: “how to sew an edgestitch” video.

SLIPSTITCH – See Hand Stitching: “how to slip stitch” video.

STITCH IN THE DITCH – See Machine Stitches: “how to stitch in the ditch” video.

TRIM SEAM – See Seams: “how to trim, clip and layer seams” video.

GLOSSARY OF SEWING METHODS

Sewing methods shown in **BOLD** are defined below:

PREPARE APPLIQUE – Apply paper backed fusible web to **WRONG** side of appliqué fabric following manufacturer's directions. Cut appliqué tissue block along outer solid line. Pin pattern to **RIGHT** side of prepared fabric. Cut out each appliqué. Transfer markings to **RIGHT** side of appliqué using a washable fabric marking pen or pencil.

APPLY APPLIQUE – Pin appliqué(s) to project as instructed in Sewing Directions. Be sure to clear all seam allowances. Fuse appliqué(s) in place, following manufacturer's directions.

DART SEAM – To stitch dart seam, with **RIGHT** sides together, bring broken lines together carefully matching small dots. On **INSIDE**, place pins at **RIGHT** angles to the broken lines. Stitch the dart seam from outer edge to the point.

TIP: To prevent a “bubble” at the point, make the last few stitches right on the fold and leave the thread ends long enough to tie a knot. **DO NOT** back-stitch at the point. Press the dart seam flat along the stitching to “blend” the stitches, then press dart as indicated in the Sewing Directions.

STUFF – Pull fiberfill apart and fluff it, breaking apart lumps and thick spots. Use pieces about the size of a golf ball. Pack into place using the end of a long handled wooden spoon or chopstick. Pack firmly in place each time stuffing is added. Use both hands to mold and shape, being careful not to over stuff or make lopsided.

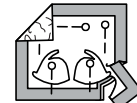
TIPS FOR WORKING WITH PLUSH FABRIC

- When cutting out plush, particularly the longer type, cut with the nap facing down. Run the tip of the lower blade of the scissors through the backing of the fabric without cutting the nap.
- When working with longer plush fabrics, remove the nap from within the seam allowances before stitching, by holding the scissor blades parallel to the plush backing.
- Pin seams by weaving the pin in and out of the sandwiched layers, to keep the layers from shifting, or hand-baste seams first.
- Finger press, or press with the nap face down on a needle board, thick terry cloth towel, or a scrap of plush face up, using a low temperature setting and a pressing cloth.
- On **OUTSIDE**, pick the pile up along the seams with a pin.

SEWING TUTORIALS



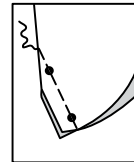
Build your skills viewing short, easy-to-follow videos at
simplicity.com/sewingtutorials



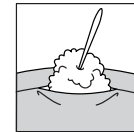
PREPARE APPLIQUE



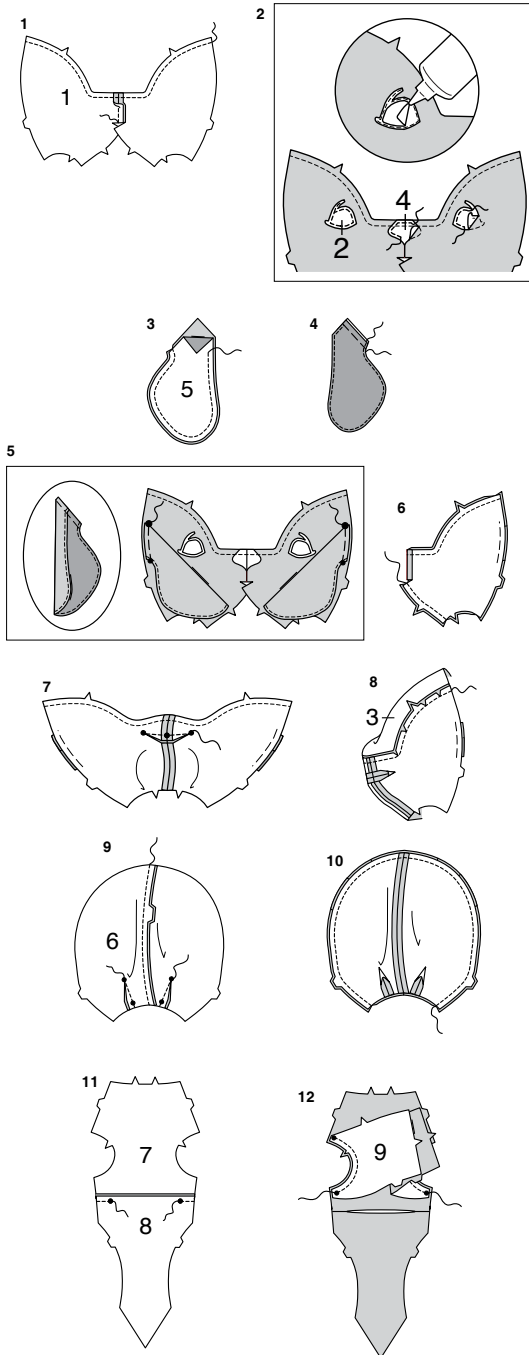
APPLY APPLIQUE



DART SEAM



STUFF



PATTERN PIECES WILL BE IDENTIFIED BY NUMBERS THE FIRST TIME THEY ARE USED.

STITCH 1/4" (6MM) SEAMS WITH RIGHT SIDES TOGETHER UNLESS OTHERWISE STATED.

GOAT A

NOTE: When clipping curves and corners of seam allowances, clip sparingly, as clipping weakens the seam.

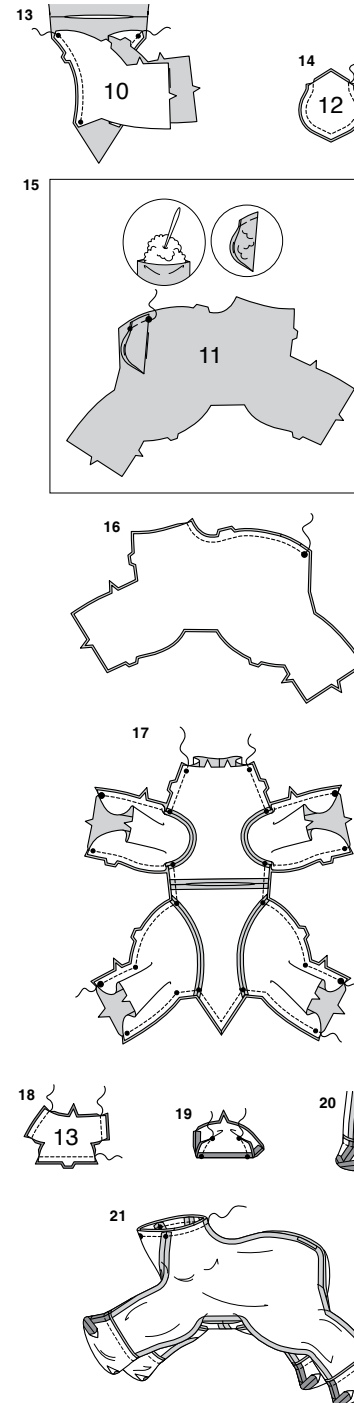
HEAD

1. With RIGHT sides together and raw edges even, pin HEAD FRONT (1) sections along straight segment of center front. Stitch straight edge along seamline. Press seam open. Machine-stitch a scant 1/4" (6mm) from upper edge of head front.
2. PREPARE APPLIQUÉ(s) EYE PATCH APPLIQUÉ (2) and NOSE APPLIQUÉ (4). APPLY APPLIQUÉ eye patch(es) to head front between the broken lines. **EDGE STITCH** eye patch in place. With a dot of fabric glue, adhere a printed felt eye to each eye patch. APPLY APPLIQUÉ nose to head front between the broken lines. **EDGE STITCH** nose in place. For clarity purposes, edge stitching will not be shown in future illustrations.
3. Pin one fabric EAR (5) to a corresponding contrast ear with RIGHT sides together. Stitch curved edge. **TRIM SEAM**.
4. Turn ear; press. **EDGE STITCH** close to finished edges. Baste raw edges together.
5. Fold ear along foldline, bringing contrast to INSIDE. With RIGHT sides together and raw edges even, pin ear to head front, matching small and large dots. Baste.
6. With RIGHT sides together and raw edges even, pin remaining center front edges together on head front, matching notches. Stitch. Press seam open.
7. Stitch **DART SEAM**. Press seam open.
8. Clip head front to stitching along upper edge, being careful not to clip through stitches. With RIGHT sides together and raw edges even, pin HEAD CENTER FRONT (3) to head front matching notches. Stitch. **TRIM SEAM**. Press seam open.

9. Stitch **DART SEAM** in HEAD BACK (6) sections. Press seam open. Stitch head back sections together at center back.
10. With RIGHT sides together and raw edges even, pin head front to head back at side edges.

BODY

11. With RIGHT sides together and raw edges even, pin UPPER BODY FRONT (7) to LOWER BODY FRONT (8) along long straight edge, matching small dots. Stitch, leaving an opening between the small dots for stuffing, back-stitching at dots to reinforce the seam.
12. With RIGHT sides together and raw edges even, pin FRONT INNER LEG (9) to upper body front, matching small dots and notches. Stitch between the small dots, back-stitching at dots to reinforce the seam. **TRIM SEAM**.



13. With RIGHT sides together and raw edges even, pin BACK INNER LEG (10) to lower body front, matching small dots and notches. Stitch between the small dots, back-stitching at dots to reinforce the seam. **TRIM SEAM**.

14. Pin TAIL (12) sections with RIGHT sides together. Stitch curved edge. **TRIM SEAM**.

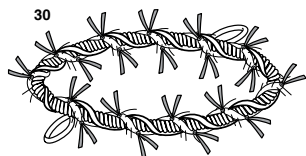
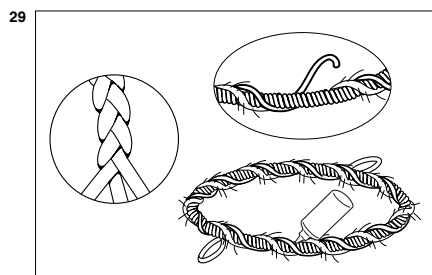
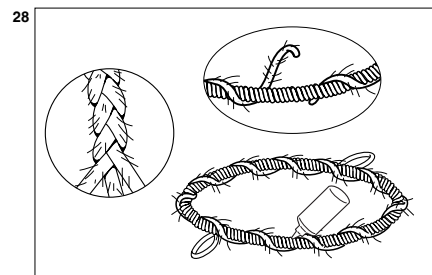
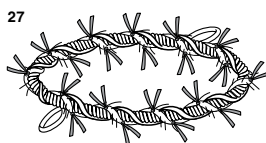
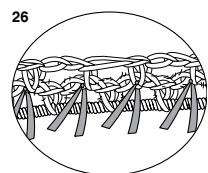
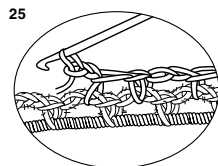
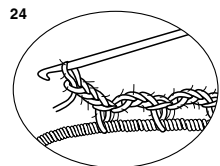
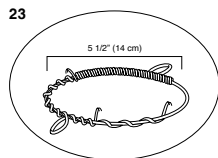
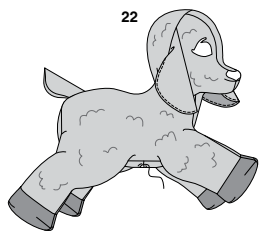
15. Turn tail; press. STUFF very lightly. Baste raw edges together. Fold Tail along foldline. On OUTSIDE, pin tail to one BODY BACK (11) section, matching small and large dots. Baste.

16. With RIGHT sides together and raw edges even, pin body back sections together along center back edge. Stitch from neck edge to large dot, back-stitching at dot to reinforce the seam. **TRIM SEAM**. Press seam open.

17. With RIGHT sides together and raw edges even, pin body front and inner legs to body back, matching small dots, large dots, and notches. Stitch, pivoting with needle in fabric at small dots and large dots, as necessary. **TRIM SEAM**.

FINISHING

18. To make each hoof, with RIGHT sides together and raw edges even, pin two HOOF (13) sections. Stitch double-notched edge and short ends together. Press seams open.
19. Make **DART SEAM**(s) in hoofs. Press open.
20. With RIGHT sides together and raw edges even, pin hooves to back and front legs, matching seams, small dots, large dots, and notches. Stitch. Press seam toward leg.
21. With RIGHT sides together and raw edges even, pin head to body at neck edge, matching back seams and large dots, placing upper body front and body back seam at remaining small dot. Stitch. **TRIM SEAM**. Press seam toward head.



22. Turn goat through opening in lower body. Press, pressing out head and legs. STUFF. SLIPSTITCH opening closed.

OPTIONAL WREATH ACCESSORY

23. Using 26 gauge wrapped wire, make a circle 5-1/2" (14cm) in diameter. Wrap a second length of wire around the circle, making 1" (2.5cm) diameter ear loops at opposite sides for goat ears. Continue wrapping around the circle a third time for durability.

WITH CROCHET

NOTE: When holding yarn or ribbon, be sure it is worked around the wire circle and not independent of it.

24. Using a J hook, attach ends of two eyelash yarns to the wire circle. *1sc, ch3* all the way around the circle, making 46 sets of stitches between *and* ending with 1sc.

25. Make a second crochet round by attaching 1/8" (3mm) wide ribbon in the same location as the yarn. 1sc in first ch3 space, 2ch in next ch3 space. Continue all the way around the circle. Secure and cut end.

26. Cut 46 pieces of 1/8" (3mm) wide ribbon of an alternate color, 3-1/4" (8.3cm) long. Tie each piece in center of first yarn round, using square knots. Trim to desired length, using a sealant to prevent ends from fraying.

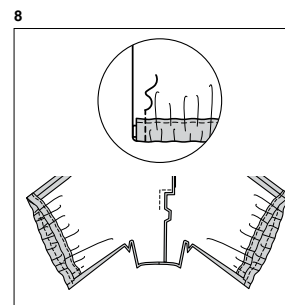
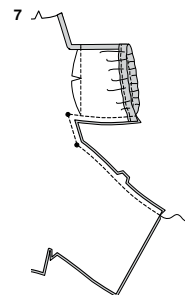
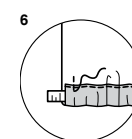
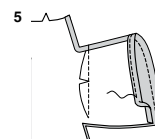
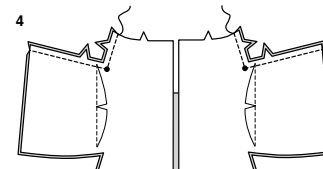
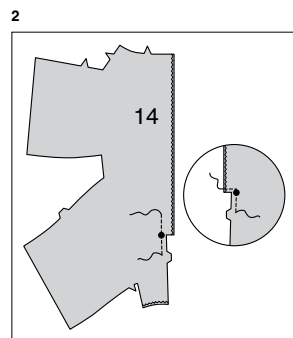
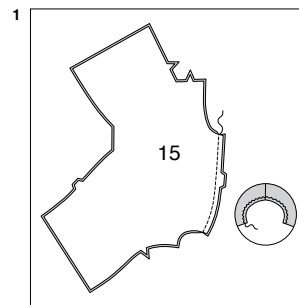
27. As shown on envelope, to finish wreath, adjust stitches around wire circle in a spiral and fluff. Slide ear loops over goat's ears to secure in place on head.

WITHOUT CROCHET

28. Attach ends of three eyelash yarns to wire circle and loosely braid. Wrap around wire in a loose spiral, making 1" diameter ear loops at opposite sides for goat ears. Secure with fabric glue or hand-tacking, and fluff.

29. Attach ends of three pieces of 1/8" (3mm) wide ribbon to wire circle and loosely braid. Wrap around wire in a loose spiral, secure with fabric glue or hand-tacking, and fluff.

30. Cut 46 pieces of 1/8" (3mm) wide ribbon of an alternate color, 3-1/4" (8.3cm) long. Tie each piece to a strand of first yarn round, using square knots. Trim to desired length, using a sealant to prevent ends from fraying. Slide ear loops over goat's ears to secure in place on head, as shown on envelope.



ONESIE AND BONNET B

ONESIE

1. With RIGHT sides together and raw edges even, pin ONESIE BACK (15) sections. Stitch center back edges. Finish lower, curved, unnotched edge with a zigzag stitch.

2. To reinforce inner corner of center front of ONESIE FRONT (14) sections at large dot, stitch along seam line for about 1" (2.5cm) each side of large dot, stitching through dot, squaring stitching on LEFT front corner, as shown. Finish front extension edge with a zigzag stitch or overlock stitch. Finish lower, curved, unnotched edge with a zigzag stitch.

3. To make a **DOUBLE POINTED DART**, with RIGHT sides together, fold the fabric through the center of the dart, bringing broken lines and small dots together. On INSIDE, place pins at RIGHT angles to the broken lines. Stitch the dart from the middle to one point. Then, overlapping several stitches, work from the middle to the other point. If necessary, carefully clip the dart at its widest point so it will lie flat. Press the dart flat along the stitching to "blend" the stitches, then press dart away from leg extension.

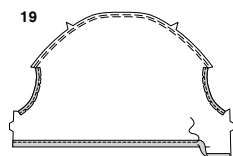
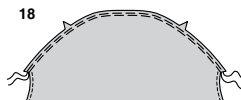
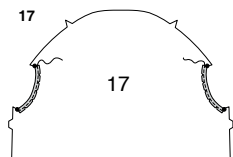
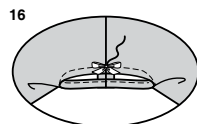
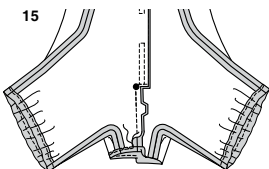
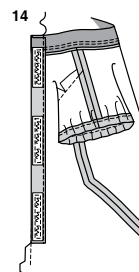
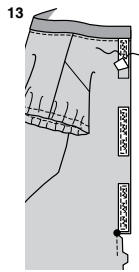
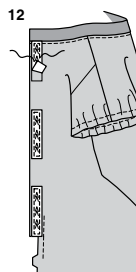
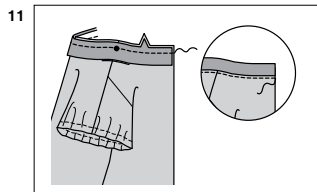
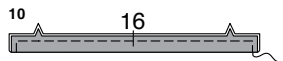
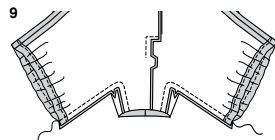
4. With RIGHT sides together and raw edges even, pin onesie front to onesie back at notched upper leg and shoulder edges, matching small dots and notches. Stitch, pivoting with needle in fabric at inner corner. Press seam open. **TRIM SEAM.**

5. To make casing for elastic, press under 1/4" (6mm) on outer edge of upper leg. Turn pressed edge to INSIDE along foldline. **EDGESTITCH** close to inner pressed edge.

6. Cut a piece of 1/8" (3mm) wide elastic, 7" (18cm) long for each leg. Thread a piece of elastic through each upper leg casing. Stitch across seamline to hold elastic in place, securely.

7. With RIGHT sides together and raw edges even, pin onesie front to onesie back between finished edge of upper leg casing and double notched lower leg, matching small dots and notches. Stitch, pivoting with needle in fabric at inner small dots. **TRIM SEAM.** Press seam open.

8. Make casing for elastic on lower leg in the same manner as for upper leg. Thread a piece of elastic through each lower leg casing. Stitch across seamline to hold elastic in place, securely.



9. With RIGHT sides together and raw edges even, pin remaining edges of lower legs sections. Stitch.

10. Fold ONESIE NECKBAND (16) in half, lengthwise, with WRONG sides together. Baste raw edges together.

11. With RIGHT sides together and raw edges even, pin neckband to neck edge of onesie, matching centers, small dots, and notches. Stitch. Press seam toward onesie, pressing neckband out. On OUTSIDE, **EDGE STITCH** onesie a scant 1/8" (3mm) from seam.

12. Cut three pieces of 1/2" (1.3cm) wide hook and loop tape, 2-1/4" (5.7cm) long. Separate the tape. Pin hook sections of tape to OUTSIDE of LEFT front extension, between the solid lines. **EDGE STITCH** in place.

13. Pin loop sections of tape to OUTSIDE of RIGHT front extension, between the solid lines. **EDGE STITCH** in place. Clip RIGHT front to stitching at large dot.

14. Press under extension on RIGHT front section. Stitch 3/4" (2cm) from pressed edge to the clip.

15. Stitch front sections together below the large dots. Press seam open and extension toward RIGHT front. Press under tail hem 1/4" (6mm). **EDGE STITCH** a scant 1/8" (3mm) from pressed edge. Clip hem to edge-stitching, as necessary.

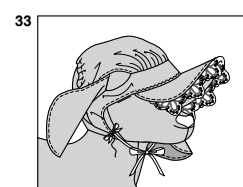
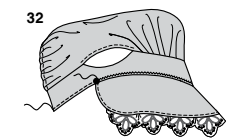
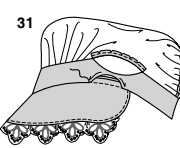
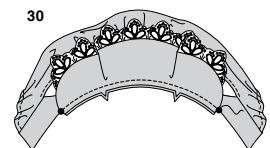
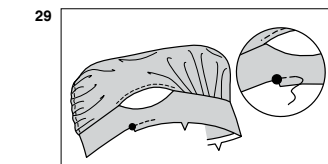
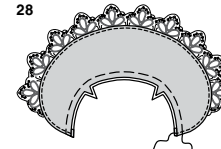
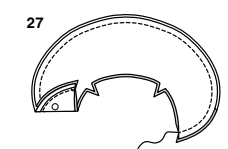
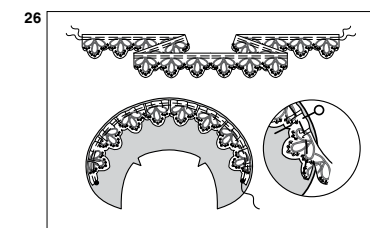
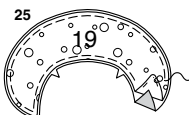
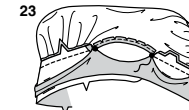
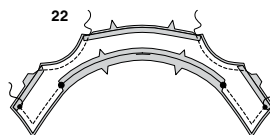
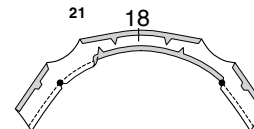
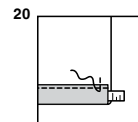
16. Cut a piece of 1/4" (6mm) wide ribbon, 9" (23cm) long. Tie ribbon into a bow; trim as desired, cut ends diagonally. Tack bow to center back of onesie at the small dot, invisibly.

BONNET

17. To hem curved edges of BONNET BACK (17) between the small dots, press under hem 1/4" (6mm). **EDGE STITCH** a scant 1/8" (3mm) from pressed edge. Clip hem to edge-stitching, as necessary.

18. To gather single notched edge, stitch along seamline using a long machine-stitch. Stitch again 1/8" (3mm) from first stitching within the seam allowance.

19. To make casing for elastic, press under 1/4" (6mm) on long unnotched edge of bonnet. Turn pressed edge to INSIDE along foldline. **EDGE STITCH** close to inner pressed edge.



20. Cut a piece of 1/8" (3mm) wide elastic, 6" (15cm) long. Thread elastic through casing bringing raw edges even. Stitch across seamline to hold elastic in place, securely.

21. Machine-stitch along seamline on long, notched edges of BONNET BAND (18) facing. Clip band to stitching at large dots. Press under 1/4" (6mm) on raw edge between the clips and a scant 1/4" (6mm) remaining notched edges, as shown.

22. With RIGHT sides together and raw edges even, pin bonnet band to bonnet band facing. Stitch ends between the small and large dots. Stitch unmarked curved edges. **TRIM SEAM(s)**.

23. Turn band; press. With RIGHT sides together and raw edge even. Pin bonnet back to band, matching small dots and notches, pulling up gathering stitches to fit. Stitch, keeping pressed edges of facing free. Pin bonnet back to bonnet band, matching small dots and double notches. Stitch, keeping pressed edges of facing free.

24. Press seams toward band, pressing band out. **SLIPSTITCH** pressed edges of facing over seams, invisibly. Or if you prefer, On INSIDE, pin pressed edges of band facing over seam, placing pins on OUTSIDE. On OUTSIDE, **STITCH IN THE DITCH** of the seam catching in pressed edge of facing on the INSIDE.

25. Pin foam stabilizer interfacing to WRONG side of BONNET BRIM (19) facing. Baste in place close to stitching line within the seam allowance.

26. Cut a piece of 1-1/4" (3-2cm) eyelet trim 20" (51cm) long. To gather, stitch 1/4" (6mm) from straight edge, using a long machine stitch. Stitch again 1/8" (3mm) from first stitching within the seam allowance. With RIGHT sides together and raw edges even, pin trim to remaining BONNET BRIM (19) tapering ends to small dots, pulling up gathering stitches to fit. Baste.

27. With RIGHT sides together and raw edges even, pin brim to facing. Stitch, leaving notched edges open. **TRIM SEAM**. Trim foam close to seamline.

28. Turn brim; press, pressing out trim. **EDGE STITCH** a scant 1/8" (3mm) from seam. Baste raw edges together.

29. To reinforce BONNET BAND (18) section at large dot, stitch from large dot along seam line for about 1" (2.5cm) as shown. Clip to stitching at dot.

30. With RIGHT sides together and raw edges even, pin band to brim, matching large dots and notches. Stitch.

31. Press seam toward band, pressing out the brim. On INSIDE, **SLIPSTITCH** band facing over seam.

32. On OUTSIDE, topstitch band along brim seamline between the large dots, using a 1/4" (6mm) wide decorative zigzag or stretch stitch. **EDGE STITCH** remaining lower edge of band close to finished edges.

33. Cut two pieces of 1/4" (6mm) wide ribbon 15" (38cm) long for ties. Tie one end one each into a bow. Trim both ends diagonally and seal. Tack bow to outer lower edge of band. Slide ear openings over goat's ears and tie bow under chin, as shown on envelope.



Congrats!

You've completed your sewing adventure

SHARE YOUR LOOK



Post your pattern and tag us using [#simplicitypatterns](#)
[@simplicity_creative_group](#)
[@simplicitymccallsuk](#)
[@simplicitymccallsaustralia](#)
for a chance to be featured on our social media.

Look for more PDF patterns at [simplicity.com](#) or for customers outside the U.S. and Canada visit [sewdirect.com](#) and [sewdirect.com.au](#)

Have a question or need help with your sewing project contact us:
[Simplicity.com](#) [Sewdirect.com](#) [Sewdirect.com.au](#)



Simplicity ©2025 a division of IG Design Group Americas Inc. • Atlanta, GA 30342 USA [www.thedesigngroup.com](#) • All Rights Reserved. [www.simplicity.com](#) • Made in the U.S.A. Fabriqué aux États-Unis.
To be used for individual private home use only and not for commercial or manufacturing purposes. • A usage privé seulement et non à des fins commerciales ou de production en série. • Para uso privado solamente, no se puede utilizar con propósitos de comercialización o de producción en serie.