

S3120

Simplicity®



easy-to-sew

Shop all the pattern brands you love @

Simplicity®.com

For customers outside of the U.S. and Canada

sewdirect.com

sewdirect.com.au

BODY MEASUREMENTS					
Sizes	XS (4-6)	S (8-10)	M (12-14)	L (16-18)	XL (20-22)
Bust	29 1/2-30 1/2 (75-77)	31 1/2-32 1/2 (80-83)	34-36 (87-92)	38-40 (97-102)	42-44 (107-112)
Waist	25-27 (64-69)	28-30 (71-76)	30-32 (76-81)	34-36 (86-91)	38-40 (96-101)
Hip 9" below waist	31 1/2-32 1/2 (80-83)	33 1/2-34 1/2 (85-88)	36-38 (92-97)	40-42 (102-107)	44-46 (112-117)
Back-neck to waist	15 1/2-16 (39-41)	16 1/2-17 (41-43)	17 1/2-18 (44-46)	18 1/2-19 (47-49)	19 1/2-20 (50-51)

Easy

MISSES' APRON IN TWO LENGTHS

Suggested Fabrics: Broadcloth, Chintz, Cotton Types, Gingham, Laminates, Lightweight Denim, Linen Types. **Contrast A:** Lace.

Notions: A: 2 1/4 yds. (2.0m) of 1/2" (1.3cm) scalloped lace trim, 4 1/4 yds. (4.1m) of 1 1/2" (4cm) scalloped lace trim, one pkg. of baby rick rack. C: 1 1/2 yds. (1.4m) of 3/4" (2.2cm) scalloped lace trim, one applique (opt.). C,D: One pkg. of 1/2" (1.3cm) double fold bias tape. D: 1/2 yd. (0.5m) of baby rick rack.

Sizes	XS	S	M	L	XL	
	6-8	10-12	14-16	18-20	22-24	
Sizes-European	32-34	36-38	40-42	44-46	48-50	
Apron A	45**	2 1/4	2 1/4	2 1/4	2 1/4	Yds.
	115cm*	2.0	2.1	2.1	2.2	m

Contrast (Ruffle, Patches) - 54" - 1/2 yd. (138cm - 0.4m)

Apron B	45**	1	1	1 1/4	1 1/4	Yd.
	115cm*	0.9	0.9	1.0	1.0	m

Contrast 1 (Side) - 45" - 1/2 yd. (115cm* - 0.5m)

Contrast 2 (Pocket, Neck Strap) - 45" - 3/4 yd. (115cm* - 0.7m)

Apron C	45**	1	1 1/4	1 1/4	1 1/4	Yds.
	115cm*	1.0	1.0	1.1	1.1	m

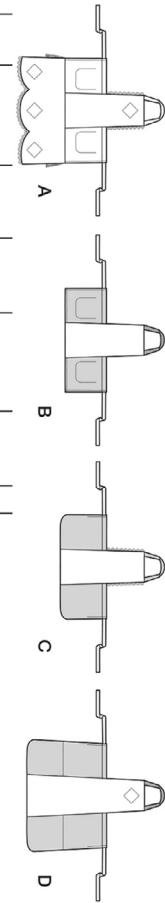
Contrast (Neck Strap, Side) - 45" - 3/4 yd. (115cm* - 0.7m)

Paper-backed fusible web C (opt.), D: 5" x 5 1/2" (13cm x 14cm)

Apron D	45**	1 1/4	1 1/4	1 1/4	1 1/4	Yds.
	115cm*	1.0	1.1	1.1	1.4	m

Contrast 1 (Side) - 45" - 1/2 yd. (115cm* - 0.7m)

Contrast 2 (Neck Strap, Pocket, Patch) - 45" - 3/4 yd. (115cm* - 0.7m)



*with nap **without nap

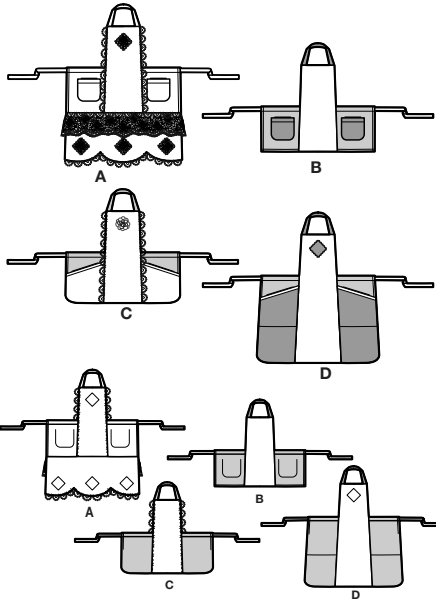
Simplicity
by design

Simplicity ©2025 a division of IG Design Group Americas Inc. • Atlanta, GA 30342 USA www.thedesigngroup.com • All Rights Reserved. www.simplicity.com • Made in the U.S.A. Fabriqué aux États-Unis.

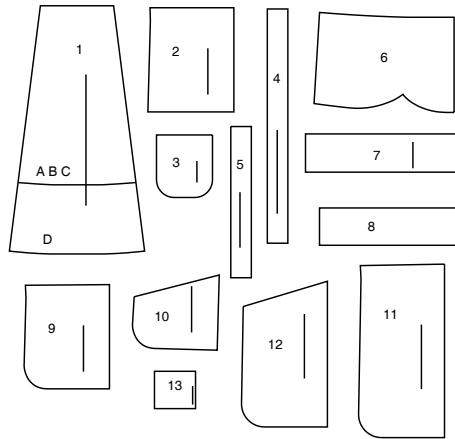
To be used for individual private home use only and not for commercial or manufacturing purposes. • A usage privé seulement et non à des fins commerciales ou de production en série. • Para uso privado solamente, no se puede utilizar con propósitos de comercialización o de producción en serie.

Simplicity®

Thank you for purchasing this Simplicity pattern.
We made every effort to provide you with a high quality product.



13 PIECES



- 1 FRONT - A,B,C,D
2 SIDE - A,B
3 POCKET - A,B
4 TIE END - A,B,C,D
5 NECK STRAP - A,B,C,D
6 LOWER BAND - A
7 RUFFLE - A
8 PATCH - A
9 SIDE - C
10 POCKET - C
11 SIDE - D
12 POCKET - D
13 PATCH - D



www.simplicity.com



info@simplicity.com



1-888-588-2700

General Directions

The Pattern

SYMBOLS

- ↔ GRAIN LINE Place on straight grain of fabric parallel to selvage
- ↓ PLACE SOLID LINE on fold of fabric.
- CENTER FRONT OR BACK of garment.
- ▽ NOTCHES
- DOTS
- CUTTING LINE
- == LENGTHEN OR SHORTEN LINES

SEAM ALLOWANCE: 5/8" (1.5cm) unless otherwise stated is included but not printed on MULTI-SIZE PATTERNS. Mark your size with colored felt tip pen. See chart on tissue for how to use MULTI-SIZE PATTERNS.

ADJUST IF NEEDED

Make adjustments before placing pattern on fabric.

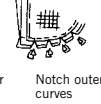
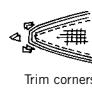
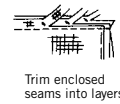
TO LENGTHEN:
Cut pattern between lengthen or shorten lines. Spread pattern evenly, the amount needed and tape to paper.

TO SHORTEN:
At lengthen or shorten lines, make an even pleat taking up amount needed. Tape in place.

When lengthen or shorten lines are not given, make adjustments at lower edge of pattern.

Sewing

- SEW garment following **Sewing Directions**.
- PIN or machine-baste seams matching notches.
- STITCH 5/8" (1.5 cm) seams unless otherwise stated.
- PRESS seams open unless otherwise indicated clipping when necessary so seams will lie flat.
- TRIM seams to reduce bulk, as shown below.



Cutting/Marking

BEFORE CUTTING:

PRESS pattern pieces with a warm dry iron. PRE-SHRINK fabric by pre-washing washables or steam-pressing non-washables.

CIRCLE your cutting layout.

PIN pattern to fabric as shown in Cutting Layouts.

• FOR DOUBLE THICKNESS: Fold fabric with RIGHT sides together.

• FOR SINGLE THICKNESS: Place fabric RIGHT side up.

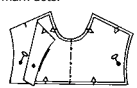
• FOR PILE, SHADED OR ONE WAY DESIGN FABRICS: Use "with nap" layouts

AFTER CUTTING:

Transfer markings to WRONG side of fabric before removing pattern. Use pin and chalk method or dressmaker's tracing paper and wheel.

To Quick Mark:

- Snip edge of fabric to mark notches, ends of fold lines and center lines.
- Pin mark dots.



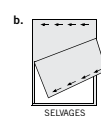
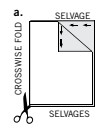
SPECIAL CUTTING NOTES

★ If layout shows a piece extending past fold, cut out all pieces except piece that extends.

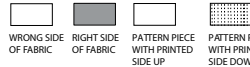
Open out fabric to single thickness. Cut extending piece on RIGHT side of fabric in position shown.

✱ Mark small arrows along both selvages indicating direction of nap or design. Fold fabric crosswise with RIGHT sides together, and cut along fold (a).

Turn one fabric layer around so arrows on both layers go in the same direction. Place RIGHT sides together (b).



Cutting Layouts



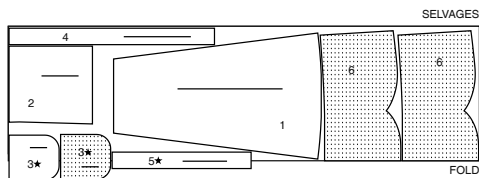
SEE SPECIAL CUTTING NOTES

POSITION OF PATTERN PIECES MAY VARY SLIGHTLY ACCORDING TO YOUR PATTERN SIZE.

APRON A

USE PIECES 1 2 3 4 5 6

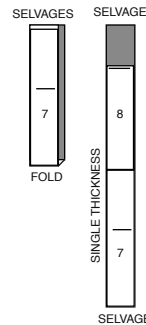
45" (115CM)
WITH NAP
ALL SIZES



CONTRAST A (RUFFLE, PATCHES)

USE PIECES 7 8

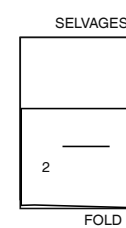
54" (138CM)
WITH NAP
ALL SIZES



CONTRAST 1 (SIDE)

USE PIECE 2

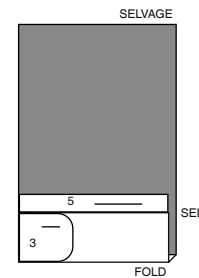
45" (115CM)
WITH NAP
ALL SIZES



CONTRAST 2 (POCKET, NECK STRAP)

USE PIECES 3 5

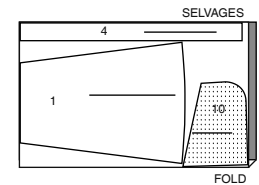
45" (115CM)
WITH NAP
ALL SIZES



APRON C

USE PIECES 1 4 10

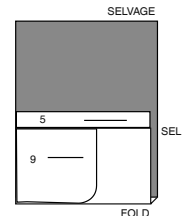
45" (115CM)
WITH NAP
ALL SIZES



CONTRAST (NECK STRAP, SIDE)

USE PIECES 5 9

45" (115CM)
WITH NAP
ALL SIZES



PAPER BACKED FUSIBLE WEB C,D
ONE 5" X 5 1/2" (13CM X 14CM) REMNANT.

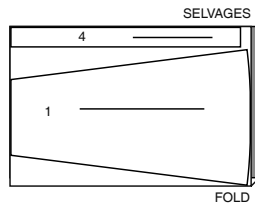
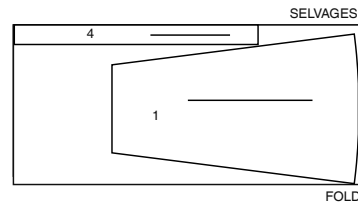
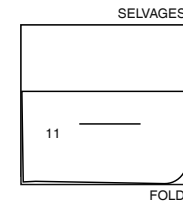
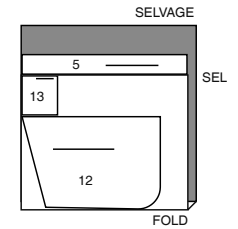
CUTTING LAYOUTS CONTINUED ON PAGE 2

S3120

2 of 4

APRON D

USE PIECES 1 4

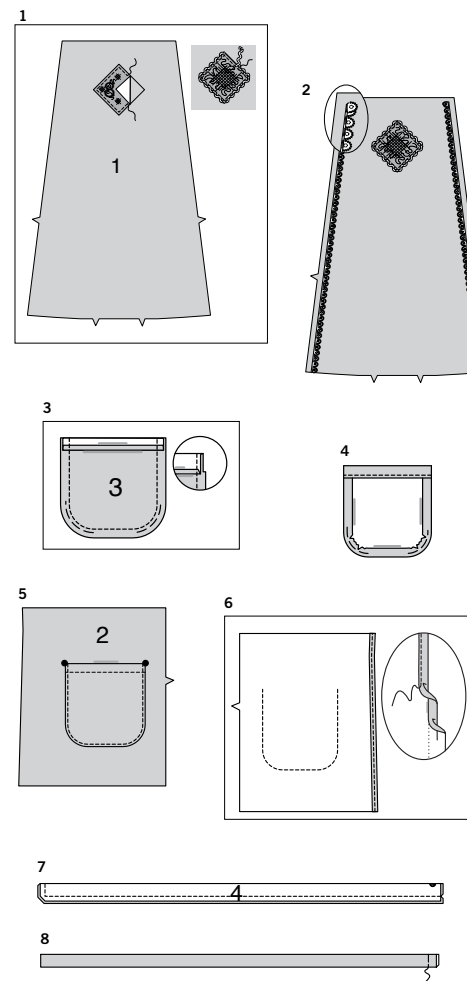
45" (115CM)
WITH NAP
SIZES XS S M45" (115CM)
WITH NAP
SIZES L XL**CONTRAST 1 (SIDE)**
USE PIECE 1145" (115CM)
WITH NAP
ALL SIZES**CONTRAST 2 (NECK STRAP, POCKET)**
USE PIECES 5 12 1345" (115CM)
WITH NAP
ALL SIZES

SEWING TUTORIALS

Build your skills viewing short, easy-to-follow videos at
simplicity.com/sewingtutorials**Sewing Directions****FABRIC KEY**Sewing methods in **BOLD TYPE** have Sewing Tutorial Video available.
Scan **QR CODE** to watch videos:**EASE/GATHER** – See **Gathering**: “sewing two row gathers” video.**EDGE STITCH** – See **Machine Stitches**: “how to sew an edgestitch” video.**NARROW HEM** – See **Hems**: “sewing narrow hems” video.**REINFORCE** – See **Machine Stitches**: “how to reinforce seams” video.**SLIPSTITCH** – See **Hand Stitching**: “how to slip stitch” video.**STITCH IN THE DITCH** – See **Machine Stitches**: “how to stitch in the ditch” video.**TOPSTITCH** – See **Machine Stitches**: “how to topstitch” video.**TRIM SEAM** – See **Seams**: “how to trim, clip and layer seams” video.**GENERAL DIRECTIONS FOR APPLIQUES****PREPARE APPLIQUES****A.** Apply paper backed fusible web to **WRONG** side of applique fabric, following manufacturer's directions.Cut applique tissue block along outer solid line. Pin pattern to **RIGHT** side of prepared fabric. Cut out applique. Transfer markings to **RIGHT** side of applique using a washable fabric marking pen or pencil.**APPLY APPLIQUES****B.** Pin applique to garment as instructed in Sewing Directions. Be sure to clear all seam allowances. A glue stick can be used to temporarily hold the applique(s) in place before stitching. Fuse applique in place, following manufacturer's directions. Straight OR Zig-zag (satin) stitch along raw edges and/or broken lines or use fabric paint to seal the edges. Allow paint to dry before you continue.**GENERAL DIRECTIONS FOR BIAS TAPE**

- BINDING** -Double fold bias tape comes with one side slightly wider than the other. The wider side is used on the **INSIDE** so that when the tape is stitched in place from the **OUTSIDE**, both edges are caught in the stitching.

- To finish edge of project, slip the edge between the folds of the bias tape placing the raw edge against the center crease and the wider folded edge of the tape on the **INSIDE** of the project. Stitch the tape in place from the **OUTSIDE**, being sure to catch in the folded edge on the **UNDERSIDE**.

APRON A, B**NOTE: View A will be shown unless otherwise indicated.**

- VIEW A-** Pin **PATCH** (8) section to **FRONT** (1) centering raw edges along placement line. **EDGE STITCH** in place. Remaining patches will be used in a later step. Cut a piece of baby rick-rack trim the width of patch. Pin baby rick-rack trim to outer edge of patch, folding in fullness at corners, turning under and lapping ends. Stitch along center of trim.

- Cut two pieces of 1-1/2" (3.5cm) scalloped lace trim the length of side edges of front. On **OUTSIDE**, pin flat edge of trim, just inside seam line, from turning under ends of trim at upper seam allowance, as shown. Baste trim in place.

- VIEW A, B-** Press under 1/4" (6mm) on upper edge of **POCKET** (3). Turn upper edge to **OUTSIDE** along fold line, forming facing. Stitch along seam line on raw edges. To ease curved edge of pocket, stitch 1/4" (6mm) **INSIDE** the seam line, using a long machine-stitch. Trim seam allowance in the facing area to 1/4" (6mm).

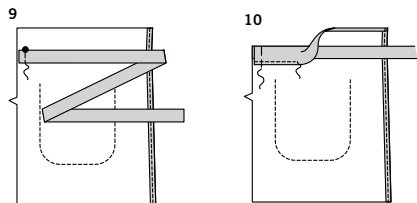
- Turn corners **RIGHT** side out, turning facing to the **WRONG** side; press, pressing under raw edges along stitching. Pull up ease stitches to shape the curve. To eliminate bulk, notch out the fullness in the seam allowance along the curves as far as the ease stitches. Stitch facing close to inner edge.

- On **OUTSIDE**, pin pocket to **SIDE** (2) matching large dots. **EDGE STITCH** side and lower edges.

- NARROW HEM** long unnotched edge of side sections.

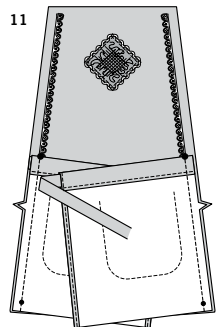
- Fold **TIE END** (4) in half lengthwise, with **RIGHT** sides together. Stitch, leaving end with large dot open. **TRIM SEAM** and corners.

- Turn tie **RIGHT** side out. Press. Baste raw edges together.

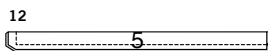


9. On **INSIDE**, pin tie to upper edge of side sections, matching large dot with seam facing down, having raw edges even. Baste.

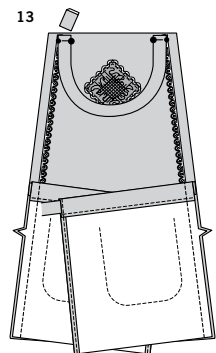
10. Press under 1/4" (6mm) on upper raw edge of side sections. Turn upper edge to **INSIDE** along fold line. Stitch close to pressed edge, forming casing, keeping tie free. Baste raw edges together in casing area.



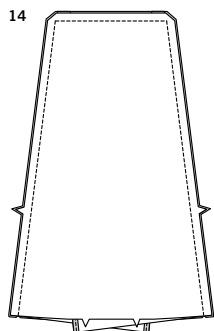
11. With **RIGHT** sides together, pin side sections to each side of front, matching notches and dots. Baste.



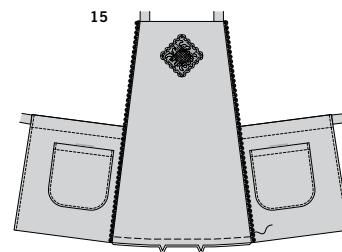
12. Fold **NECK STRAP** (5) in half lengthwise, with **RIGHT** sides together. Stitch, leaving adjustable side open. **TRIM SEAM** and corners.



13. Turn strap **RIGHT** side out. Press. On **OUTSIDE**, pin strap to upper edge of front. Adjust strap if necessary. Trim away excess strap. Baste ends in place.



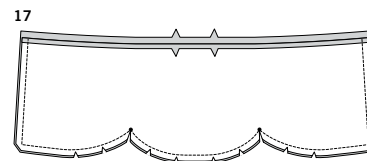
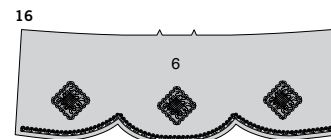
14. With **RIGHT** sides together, pin front facing to front (over sides and neck strap, having raw edges even. Stitch outer edge, leaving lower edge open. **TRIM SEAM** and corners.



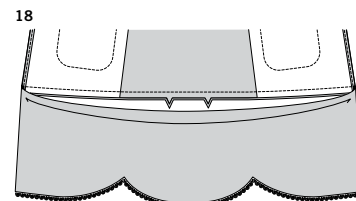
15. Turn facing to **INSIDE**. Press. Baste raw edges together.

FINISHING

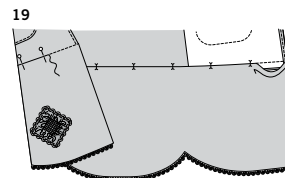
16. VIEW A- APPLY remaining patches to **LOWER BAND** (6) centering along placement lines. Cut a piece of 1/2" (1.3cm) scalloped lace trim the length of lower curved edge of band. On **OUTSIDE**, pin flat edge of trim, just inside seam line, turning under ends of trim at side seam allowance, as shown. Baste trim in place.



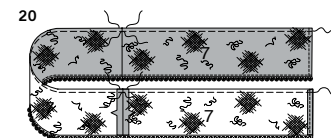
17. Press under 1/2" (1.3cm) on notched edge of lower band facing. With **RIGHT** sides together, pin lower band sections together, having raw edges even. Stitch, leaving upper edge open. **TRIM SEAM**. Clip curves, clip to inner corners at small dots, being careful not to clip through stitching.



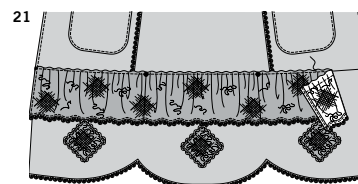
18. With **RIGHT** sides together, pin lower band to lower edge of apron, matching notches. Stitch, keeping pressed edge of band free. Press seam down, pressing band out.



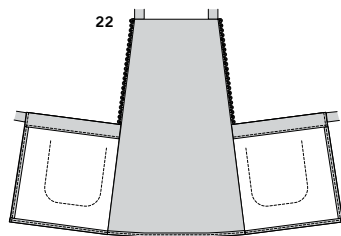
19. On **INSIDE**, pin pressed edge of band over seam, placing pins on **OUTSIDE**. On **OUTSIDE**, **STITCH IN THE DITCH** or "groove" of seam, catching in pressed edge on **INSIDE**.



20. Stitch seams in **RUFFLE** (7) sections. **NARROW HEM** side edges of ruffle. Cut a piece of 1/2" (1.3cm) scalloped lace trim the length of the lower edge of ruffle. Pin flat edge of trim to lower edge. Stitch. **GATHER** upper edge using one row gather 1/8" (3mm) from upper edge, breaking stitching at seams.



21. On **OUTSIDE**, pin ruffle to apron, centering gathering line over seam, as shown. Adjust gathers, placing seams at large dots, having hemmed edges at outer small dots. Baste. Stitch, connecting with previous stitching.



- 22. VIEW B-** Remove basting from lower edges of front.
NARROW HEM raw edges.
NOTE: If you prefer, turn under seam allowances on lower front raw edges and **SLIPSTITCH** pressed edges together.
NARROW HEM remaining raw edge.

APRON C, D

NOTE: View D will be shown unless otherwise indicated.

- 1. VIEW D- PREPARE PATCH** (13) section. **APPLY** patch to **FRONT** (1) centering along placement lines. Pin baby rick-rack trim to outer edge of patch, folding in fullness at corners, turning under ends. Stitch along center of trim.
VIEW C Patch can be made using motif from self-fabric, or using any fabric you desire, cut out image with 1/4" (6mm) border, using the same method explained for preparing appliques. See **GENERAL DIRECTIONS FOR APPLIQUES**. **APPLY** motif to **FRONT** (1) as desired.

- 2.** Fold **NECK STRAP** (5) in half lengthwise, with **RIGHT** sides together. Stitch, leaving adjustable side open. **TRIM SEAM** and corners.

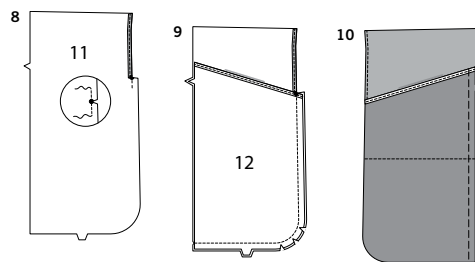
- 3.** Turn strap **RIGHT** side out. Press. On **OUTSIDE**, pin strap to upper edge of front. Adjust strap if necessary. Trim away excess strap. Baste ends in place.

- 4. VIEW C-** Cut two pieces of 7/8" (2.2cm) scalloped lace trim the length of side edges of front. On **OUTSIDE**, pin flat edge of trim to front having flat edge of trim just inside seam line, turning under ends at upper seam allowance, as shown. Baste trim in place.

- 5. REINFORCE SIDE** (9) at large dot. Clip to large dot being careful not to clip through stitching. **NARROW HEM** side edge above clip.

- 6.** Apply **BINDING** to upper edge of **POCKET** (10). Pin **RIGHT** side of pocket to **WRONG** side of side sections, matching notches. Stitch curved edge ending at large dot. **TRIM SEAM**, clip curves.

- 7.** Turn pocket to **OUTSIDE**. Press. Baste raw edges together.



- 8. VIEW D- REINFORCE SIDE** (11) at large dot. Clip to large dot being careful not to clip through stitching. **NARROW HEM** side edge above clip.

- 9.** Apply **BINDING** to upper edge of **POCKET** (12). Pin **RIGHT** side of pocket to **WRONG** side of side sections, matching notches. Stitch curved edge ending at large dot. **TRIM SEAM**, clip curves.

- 10.** Turn pocket to **OUTSIDE**. Press. Baste raw edges together. **TOPSTITCH** along stitching line, through all thicknesses.

FINISHING

- 11.** Fold **TIE END** (4) in half lengthwise, with **RIGHT** sides together. Stitch, leaving end with large dot open. **TRIM SEAM** and corners.

- 12.** Turn tie **RIGHT** side out. Press. Baste raw edges together.

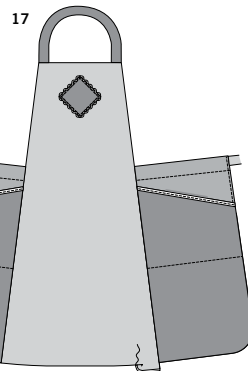
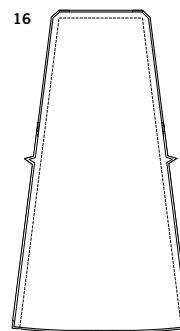
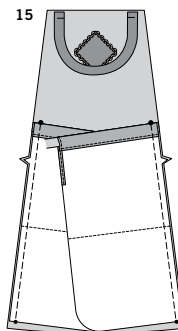
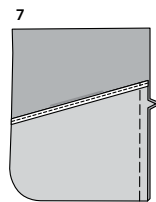
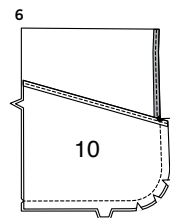
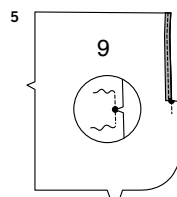
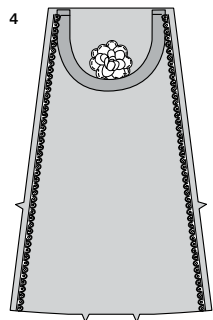
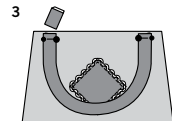
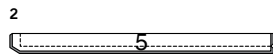
- 13.** On **INSIDE**, pin tie to upper edge of side sections, matching large dot with seam facing down, having raw edges even. Baste.

- 14.** Press under 1/4" (6mm) on upper raw edge of side sections. Turn upper edge to **INSIDE** along fold line. Stitch close to pressed edge, forming casing, keeping tie free. Baste raw edges together in casing area.

- 15.** With **RIGHT** sides together, pin side sections to each side of front, matching notches and dots. Baste.

- 16.** With **RIGHT** sides together, pin front facing to front (over sides and neck strap, having raw edges even. Stitch outer edge, leaving lower edge open. **TRIM SEAM** and corners.

- 17.** Turn facing to **INSIDE**. Press, pressing under seam allowances on lower raw edges of front. **SLIPSTITCH** pressed edges together.





Congrats!

You've completed your sewing adventure

SHARE YOUR LOOK



Post your pattern and tag us using [#simplicitypatterns](#)
[@simplicity_creative_group](#)
[@simplicitymccallsuk](#)
[@simplicitymccallsaustralia](#)
for a chance to be featured on our social media.

Look for more PDF patterns at [simplicity.com](#) or for customers outside the U.S. and Canada visit [sewdirect.com](#) and [sewdirect.com.au](#)

Have a question or need help with your sewing project contact us:
[Simplicity.com](#) [Sewdirect.com](#) [Sewdirect.com.au](#)



Simplicity ©2025 a division of IG Design Group Americas Inc. • Atlanta, GA 30342 USA [www.thedesigngroup.com](#) • All Rights Reserved. [www.simplicity.com](#) • Made in the U.S.A. Fabriqué aux États-Unis.
To be used for individual private home use only and not for commercial or manufacturing purposes. • A usage privé seulement et non à des fins commerciales ou de production en série. • Para uso privado solamente, no se puede utilizar con propósitos de comercialización o de producción en serie.