

S3118

Simplicity®

Madalynne



Average

MISSES' CROPPED CORSET AND SKORT

Suggested Fabrics: Broadcloth, Calico, Chintz, Cotton Types, Gingham, Lightweight Denim, Linen Types. **Interlining:** Cotton Duck, Coutil. **Interfacing:** Lightweight Fusible.

Notions: Corset: 1 yd. (0.9m) of ¼" (6mm) steel boning, 1½ yds. (1.4m) of ¼" (6mm) spiral steel boning, 2½ yds. (2.1m) of 10mm - 15mm boning tape or twill tape, eighteen 5mm eyelets, 3½ yds. (3.4m) of ¾" (1cm) ribbon or flat lacing or ¼" (6mm) cord. **Skort:** One 7" (18cm) invisible zipper (adjust to fit), two hooks and eyes.

Sizes	8	10	12	14	16	18	20	22	24	26
European	34	36	38	40	42	44	46	48	50	52

BODY MEASUREMENTS: Select pattern size based on body measurements

Bust	31½	32½	34	36	38	40	42	44	46	48	Ins.
Waist	24	25	26½	28	30	32	34	37	39	41½	"
Hip-9" below waist	33½	34½	36	38	40	42	44	46	48	50	"
Back-neck to waist	15¾	16	16¼	16½	16¾	17	17¼	17½	17¾	17¾	"

Corset	45,60**	- 1½ yds.									
Interlining	45**	¾	¾	¾	¾	¾	¾	¾	¾	¾	Yds.
Skort	60**	¾	1	1	1	1	1	1½	1½	1½	Yds.
Contrast (Skort Front and Back)	45**	¾	¾	¾	1	1	1	1	1	1	Yds.
	60**	½	½	½	½	¾	¾	¾	¾	1	"
Interfacing	20*	- ¾ yd.									

FINISHED GARMENT MEASUREMENTS (Includes Design and Wearing Ease)

Waist	23¾	24¾	26¼	28¼	30¼	32¼	34¼	36¼	38¼	40¼	Ins.
Hip	36	37	38½	40½	42½	44½	46½	48½	50½	52½	"
Width, each leg											
Skort	23	23¾	25¼	26¼	27¾	29	30¼	31½	32¾	34	Ins.
Finished side length from waist											
Skort	13¼	13½	13¾	14	14¼	14½	14¾	15	15¼	15½	Ins.

*with nap **without nap

Moins Facile

CORSET COURT ET JUPE-SHORT POUR JEUNES FEMMES

Tissus Conseillés: Broadcloth, Calicot, Chintz, Types coton, Vichy, Denim léger, Types toile de lin. **Triplure:** Toile de coton, Coutil. **Entoilage:** Thermocollant léger.

Mercerie: Corset: 0.9m de baleine en acier de 6mm, 1.4m de baleine en acier spirale de 6mm, 1.1m de ruban pour baleine ou de talonnette de coton de 10mm - 15mm, 18 œillets de 5mm, 3.4m de ruban ou dentelle plate de 1cm ou de cordon de 6mm. **Jupe-short:** 1 fermeture à glissière invisible de 18cm (adaptez pour ajuster), 2 agrafes.

Tailles	8	10	12	14	16	18	20	22	24	26
Françaises	36	38	40	42	44	46	48	50	52	54
Européen	34	36	38	40	42	44	46	48	50	52

MESURES DU CORPS: Choisissez la taille du patron basée sur les mesures du corps

Poitrine	80	83	87	92	97	102	107	112	117	122	cm
Taille	61	64	67	71	76	81	87	94	99	106	"
Hanches (23cm au-dessous de la taille)											
	85	88	92	97	102	107	112	117	122	127	cm
Dos du cou à la taille	40	40.5	41.5	42	42.5	43	44	44	44.5	44.5	"

Corset	115,150cm*	- 1.1m										
Triplure	115cm**	0.7	0.7	0.7	0.7	0.7	0.7	0.8	0.8	0.8	0.8	m
Jupe-short	150cm*	0.8	0.8	0.9	0.9	0.9	0.9	0.9	0.9	1.0	1.0	m
Contraste (Jupe-short devant et dos)	115cm*	0.7	0.8	0.8	0.8	0.9	0.9	0.9	0.9	0.9	0.9	m
	150cm*	0.5	0.5	0.5	0.5	0.6	0.6	0.7	0.8	0.9	0.9	"
Entoilage	51cm	- 0.7m										

MESURES DES VÊTEMENTS FINI (Motif et aisance de port compris)

Taille	60	63	67	72	77	82	87	92	97	102	cm
Hanches	91	94	98	103	108	113	118	123	128	133	"
Largeur, chaque jambe											
Skort	58	60	64	67	70	74	77	80	83	86	cm
Longueur finie - côté, taille à l'ourlet											
Skort	34	34	35	36	36	37	37	38	39	39	cm

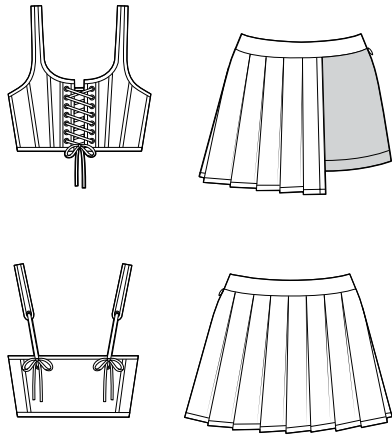
*avec sens **sans sens



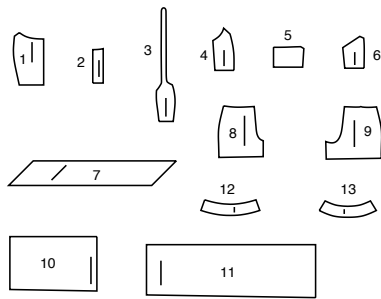
Designed and printed in USA. Scan QR code for a Sew-Along tutorial by Maddie Kullig

Simplicity®

Thank you for purchasing this Simplicity pattern. We made every effort to provide you with a high quality product.



13 PIECES



- 1 CORSET FRONT
- 2 CORSET FRONT FACING
- 3 CORSET MIDDLE FRONT
- 4 CORSET SIDE FRONT
- 5 CORSET BACK
- 6 CORSET SIDE BACK
- 7 CORSET BINDING
- 8 SKORT FRONT
- 9 SKORT BACK
- 10 SKORT FRONT OVERLAY
- 11 SKORT BACK OVERLAY
- 12 SKORT YOKE FRONT
- 13 SKORT YOKE BACK

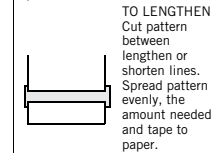
General Directions

The Pattern

- SYMBOLS**
- ↔ GRAIN LINE Place on straight grain of fabric parallel to selvage
 - ⇄ PLACE SOLID LINE on fold of fabric.
 - - - - - CENTER FRONT OR BACK of garment.
 - ∇ NOTCHES
 - ○ DOTS
 - CUTTING LINE
 - == LENGTHEN OR SHORTEN LINES

SEAM ALLOWANCE: 5/8" (1.5cm) unless otherwise stated is included but not printed on MULTI-SIZE PATTERNS. Mark your size with colored felt tip pen. See chart on tissue for how to use MULTI-SIZE PATTERNS.

ADJUST IF NEEDED
Make adjustments before placing pattern on fabric.



TO LENGTHEN: Cut pattern between lengthen or shorten lines. Spread pattern evenly, the amount needed and tape to paper.

TO SHORTEN: At lengthen or shorten lines, make an even pleat taking up amount needed. Tape in place.

When lengthen or shorten lines are not given, make adjustments at lower edge of pattern.

Cutting/Marking

BEFORE CUTTING:
PRESS pattern pieces with a warm dry iron. PRE-SHRINK fabric by pre-washing washables or steam-pressing non-washables.

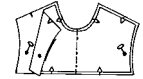
CIRCLE your cutting layout.
PIN pattern to fabric as shown in Cutting Layouts.

- FOR DOUBLE THICKNESS: Fold fabric with RIGHT sides together.
- FOR SINGLE THICKNESS: Place fabric RIGHT side up.
- FOR PILE, SHADED OR ONE WAY DESIGN FABRICS: Use "with nap" layouts

AFTER CUTTING:
Transfer markings to WRONG side of fabric before removing pattern. Use pin and chalk method or dressmaker's tracing paper and wheel.

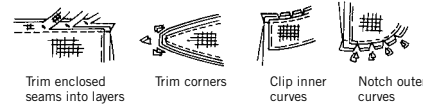
To Quick Mark:

- Snip edge of fabric to mark notches, ends of fold lines and center lines.
- Pin mark dots.



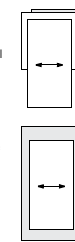
Sewing

- SEW garment following **Sewing Directions**.
- PIN or machine-baste seams matching notches.
- STITCH 5/8" (1.5 cm) seams unless otherwise stated.
- PRESS seams open unless otherwise indicated clipping when necessary so seams will lie flat.
- TRIM seams to reduce bulk, as shown below.



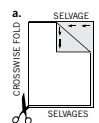
SPECIAL CUTTING NOTES

★ If layout shows a piece extending past fold, cut out all pieces except piece that extends.

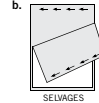


Open out fabric to single thickness. Cut extending piece on RIGHT side of fabric in position shown.

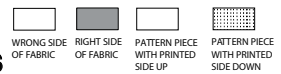
✱ Mark small arrows along both selvages indicating direction of nap or design. Fold fabric crosswise with RIGHT sides together, and cut along fold (a).



Turn one fabric layer around so arrows on both layers go in the same direction. Place RIGHT sides together (b).



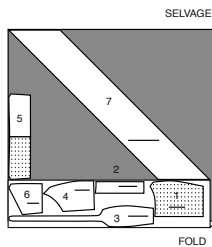
Cutting Layouts



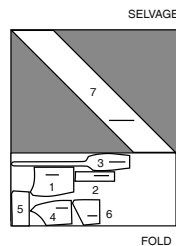
POSITION OF PATTERN PIECES MAY VARY SLIGHTLY ACCORDING TO YOUR PATTERN SIZE

CORSET
USE PIECES 1 2 3 4 5 6 7

45" (115CM)
WITH NAP
ALL SIZES



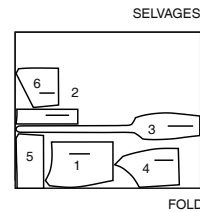
60" (150CM)
WITH NAP
ALL SIZES



INTERLINING

USE PIECES 1 2 3 4 5 6

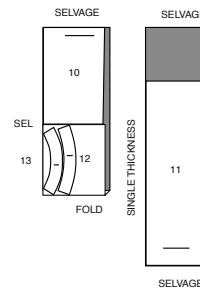
45" (115CM)
WITH NAP
ALL SIZES



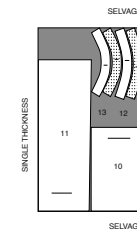
SKORT

USE PIECES 10 11 12 13

60" (150CM)
WITH NAP
SIZES 8 10 12 14



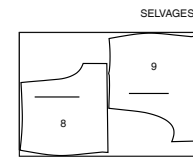
60" (150CM)
WITH NAP
SIZES 16 18 20 22 24 26



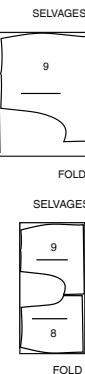
CONTRAST (SKORT FRONT AND BACK)

USE PIECES 8 9

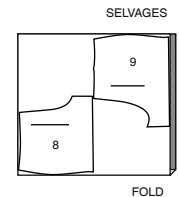
45" (115CM)
WITH NAP
ALL SIZES



60" (150CM)
WITH NAP
SIZES 8 10 12 14



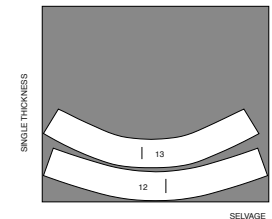
60" (150CM)
WITH NAP
SIZES 16 18 20 22 24 26



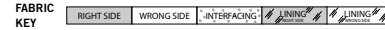
INTERFACING

USE PIECES 12 13

20" (51CM)
ALL SIZES



Sewing Directions



Read **General Directions** on page 1 before you begin.

GLOSSARY OF SEWING METHODS

Sewing methods shown in **BOLD TYPE** are defined below:

FINISH - Stitch 1/4" (6mm) from raw edge and finish with one of the following: (1) Pink OR (2) Overcast OR (3) Turn in along stitching and stitch close to fold OR (4) Overlock.

OPTIONAL FOR HEMS: Apply Seam Binding.

STAYSTITCH - Stitch 1/8" (3mm) from seamline in seam allowance (usually 1/2" (13mm) from raw edge).

TOPSTITCH - On outside, stitch 1/4" (6mm) from edge, seam or previous stitching, using presser foot as guide, or stitch where indicated in instructions.

PATTERN PIECES will be identified by numbers the first time they are used.

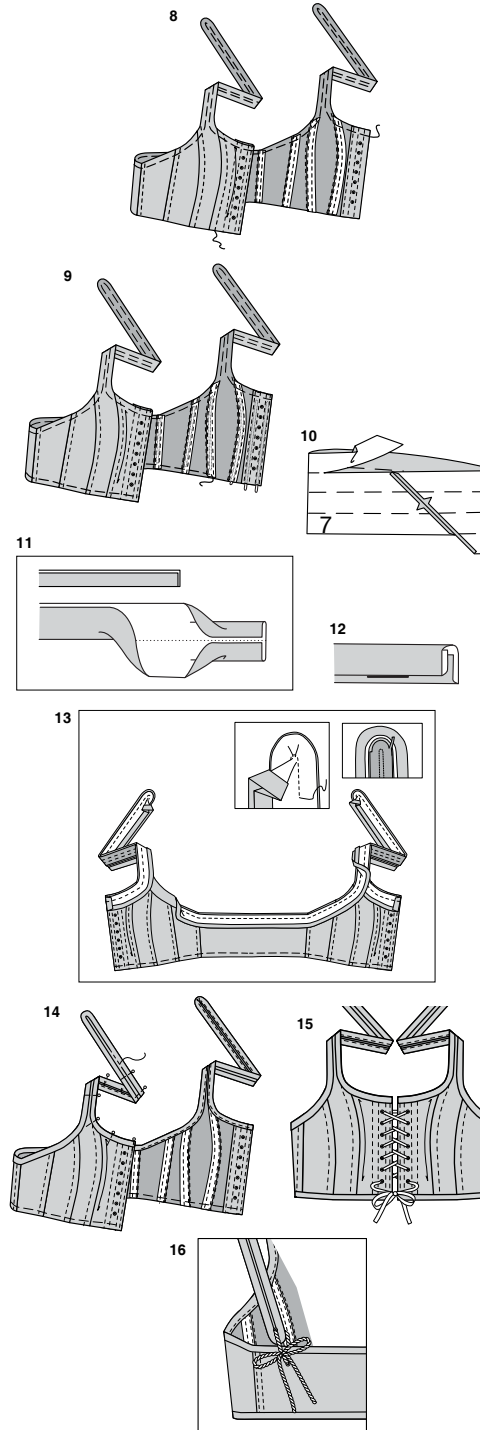
STITCH SEAMS WITH RIGHT SIDES TOGETHER UNLESS OTHERWISE STATED.

CORSET

NOTE: *INTERLINING will be shown as contrast fabric.*

ASSEMBLING THE CORSET

- With **WRONG** sides together, pin fabric CORSET FRONT (1), CORSET FRONT FACING (2), CORSET MIDDLE FRONT (3), CORSET SIDE BACK (4), CORSET BACK (5), and CORSET SIDE BACK (6) sections to corresponding interlining sections. Baste 1/4" (6mm) from raw edges. Handle both layers as one. (Basting will be shown only in the first illustration.)
- FINISH** long unnotched edge of corset front facing. With **RIGHT** sides together, pin facing to corset front, matching notches. Stitch. Trim.
- Turn facing to **INSIDE**. Press.
- On **OUTSIDE**, **TOPSTITCH** 1/8" (3mm) from front edge. Stitch along stitching lines to form boning channels. Make grommet openings on corset front at markings using an awl, or by cutting small holes with an embroider scissors. Apply grommets following manufacturer's directions.
TIP - Practice applying grommets on a fabric remnant before applying to corset.
- For front, stitch corset front (1) to corset middle front (3), **RIGHT** sides together. Stitch corset middle front to corset side front (4).
- For back, stitch corset side back (6) sections to side edges of corset back (5), matching double notches. Stitch back to front at sides matching single notches. Trim all seams, grading seam allowances. Press seam allowances toward front.
- Cut a piece of boning tape or twill tape the length of each seam. Pin tape along each seam with back edge of tape along seamline and front edge of tape within the seam allowance. Stitch close to back edge of tape through the seam allowance only. Press seam allowance toward center front.



- To form channels for boning, on **OUTSIDE**, **TOPSTITCH** 3/8" (1cm) from seam, catching in front edge of tape on **INSIDE**. Baste 3/8" (1cm) from upper edge of corset.

NOTE: This design uses two types of boning: 1/4" (6mm) - 3/8" (10mm) flat steel boning and spiral steel boning. Pre-cut and capped flat and spiral boning may be found at corset making supply websites, cut to order and capped. You will need four pieces of flat steel boning for the channels at the front opening and eight pieces of spiral steel boning for the remaining channels. Measure each channel and subtract 1" (2.5cm) to allow space for stitching on the binding at the upper and lower edges.
Boning also comes with purchased kits found at <https://madalynne.com>.

- Insert flat steel boning into the four boning channels on corset front. Insert spiral steel boning into all other channels. Make sure that boning sections are 3/8" (1cm) - 1/2" (1.3cm) from the top and bottom edges of corset to allow binding to be applied. Baste 3/8" (1cm) from lower edges of corset.

BINDING

- With **RIGHT** sides together, fold CORSET BINDING (7) into a tube, matching the lines and notches so one width of binding extends beyond the top and bottom ends, as shown. Stitch in a 1/4" (6mm) seam and press open. Cut along bottom of strip and continue cutting in a spiral until the end of the line. This creates on continuous strip of bias.

- Trim ends straight. To create double fold bias binding from strip, fold strip in half lengthwise, having long edges 1/8" (3mm) apart, as shown. Press the fold edge, setting in a crease. Open out the fold. Turn long edges to **WRONG** side meeting at crease. Press.
- Fold strip along crease, encasing the turned edges. Notice that one edge is wider than the other. The wider side is to be used on the **INSIDE**.
- Cut a piece of binding the length of the upper edge of the corset and straps, plus 1" (2.5cm). Open out the narrower edge of binding. On **OUTSIDE**, pin binding to upper edge of corset and straps, **RIGHT** sides together, with raw edges even. Turning in ends at front edges. Baste using a 3/8" (1cm) seam. Stitch. Trim away 1/8" (3mm) from strap at tight curves.

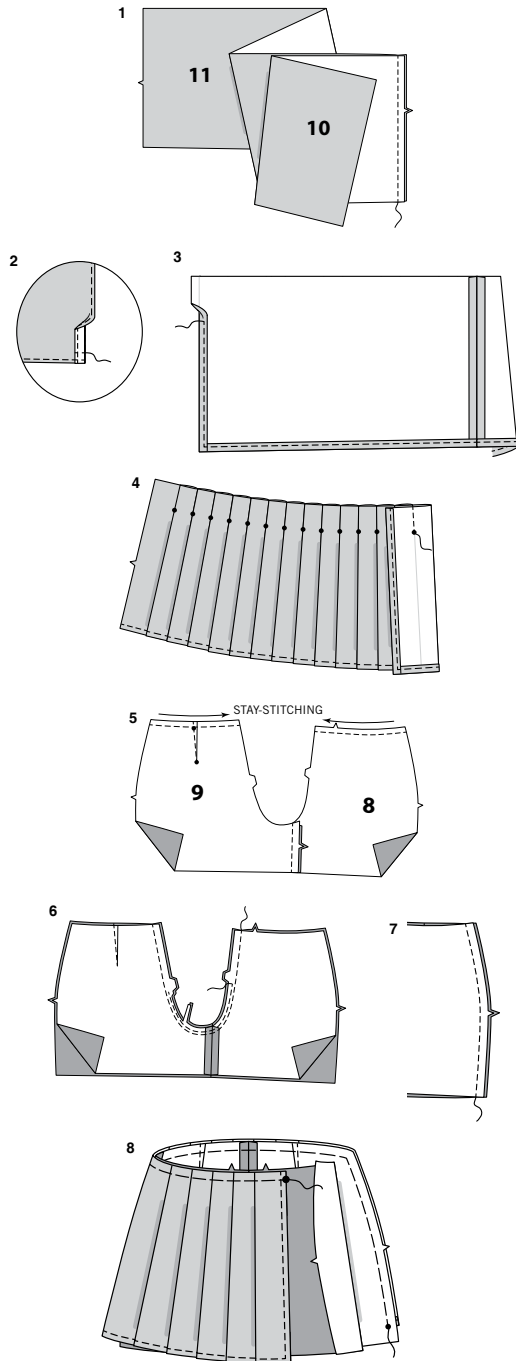
- Turn binding to **INSIDE**. Press. Pin pressed edge of binding over seam, placing pins on the **OUTSIDE**, folding in fullness on ends of straps. On **OUTSIDE**, stitch in the ditch or groove of the seam, catching in pressed edge of binding on the **INSIDE**. Cut and stitch binding to lower edge of corset in same manner.

FINISHING

- For front, using a lacing of your choice, lace front opening of corset starting with the top grommets from the **INSIDE**; thread through grommets to the waist in a crisscross pattern and tying into a single or double bow. If you prefer, trim ends as desired and apply cord ends.
- Apply grommets to corset back and ends of straps at markings in same manner as for front of corset.
For lacing on each shoulder strap, cut a piece of lacing or cord, 18" (46cm) long. On **OUTSIDE**, thread lacing through strap grommet and back grommet bringing ends to **OUTSIDE**. Try on garment, adjust straps to fit. Knot ends together and tie into a bow. If you prefer, trim ends as desired and apply cord ends.

SKORT

OVERLAY, FRONT AND BACK



1. With **RIGHT** sides together, stitch **SKORT FRONT OVERLAY (10)** to **SKORT BACK OVERLAY (11)** matching notches.

2. FINISH front and lower edges of skort overlay. Turn lower front edge of skort to **OUTSIDE** along the $5/8"$ (1.5cm) seamline. Stitch across front edge $5/8"$ (1.5cm) from lower edge.

3. Turn corner **RIGHT** sides out, turning in $5/8"$ (1.5cm) along remainder of front and lower edges. Press. Stitch $3/8"$ (1cm) from pressed edges.

4. To make pleats on skort overlay, on **OUTSIDE**, fold along solid lines. Press. Bring solid lines to broken lines, matching stitching lines above small dots. Pin. On **INSIDE**, open out pleat, keeping stitching lines together. Stitch along stitching lines above small dots.

5. STAYSTITCH upper edge of **SKORT FRONT (8)** and **SKORT BACK (9)**. Stitch dart on skort back. Press dart toward center. Stitch skort back to skort front at inner leg seam, matching notches.

6. With **RIGHT** sides together, stitch center seam of skort, matching notches and inner leg seams. Stitch again $1/4"$ (6mm) away in seam allowance between notches. Trim close to second stitching.

7. Stitch skort front to skort back at right side seam.

8. Pin **WRONG** side of skort overlay to **RIGHT** side of skort matching left back edges, notches and small dots. Baste left back and upper edges, as shown.

INVISIBLE ZIPPER

NOTE: *Stitch the invisible zipper using an invisible zipper foot. If the zipper is longer than the zipper opening, adjust after the zipper is inserted.*

9. Open the zipper and press the tape using a cool iron. On **OUTSIDE**, pin **LEFT** half of the zipper face down on the left front zipper opening. Have the coil along the seam line, the tape within the seam allowance and the top stop $3/4"$ (2cm) below upper edge, as shown. Hand-baste along center of the tape. Position zipper foot at the top of the zipper with **LEFT** groove of the foot over coil. Stitch along tape to the notch. Back-stitch to reinforce.

10. Pin the remaining half of the zipper to left back zipper opening in same manner. Make sure the upper and lower edges of the garment are even. Hand-baste along the center of the tape. Position zipper foot at the top of the zipper with **RIGHT** groove over the coil. Stitch along tape to the notch. Back-stitch to reinforce.

11. Close zipper and check that it is invisible from the **OUTSIDE**. Pull the free ends of the zipper tape away from the seam allowance. Pin remaining left side seam together below zipper. Position zipper foot all the way to the **LEFT** so the needle goes down through the outer notch of the foot. Start stitching seam $1/4"$ (6mm) above lowest stitch and slightly to the **LEFT**. Stitch seam for about $3"$ (7.5cm). Stitch remainder of seam using your regular presser foot.

12. If the zipper is longer than the opening, using a strong thread, hand-sew a few small stitches across ends of coils at end of opening. Trim away lower end of zipper tape to within $5/8"$ (1.5cm) of hand-stitches.

13. If you prefer, open out each seam allowance at end of zipper and stitch tape to seam allowance.

YOKE

14. Fuse **INTERFACING** to **WRONG** side of **SKORT YOKE FRONT (12)** and **SKORT YOKE BACK (13)** sections, following manufacturer's directions. Stitch skort yoke front to skort yoke back sections at right side, matching notches. Remaining yoke sections will be used as facings.

15. Pin skort yoke to skort, **RIGHT** sides together, matching centers, and right side seam, having ends extending $5/8"$ (1.5cm) beyond opening edges of skort. Stitch. Trim. Press seam toward yoke.

16. Stitch skort yoke **FACING** sections together at right side. Press under $1/2"$ (1.3cm) on lower edge, easing in fullness.

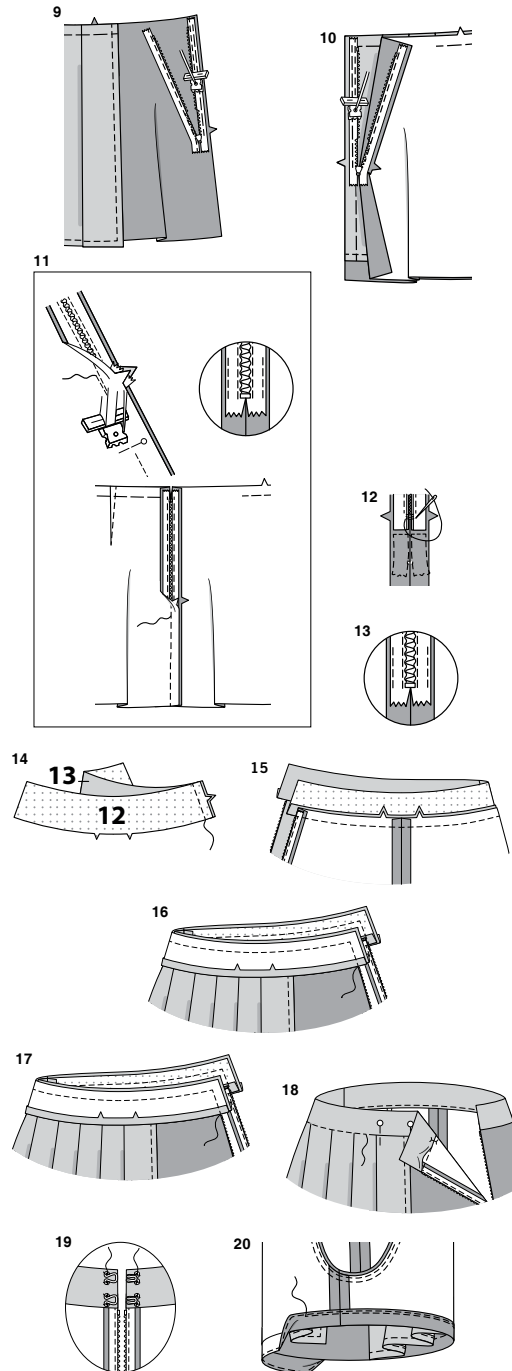
17. With **RIGHT** sides together and raw edges even, pin facing to yoke, matching centers and side seams. Stitch opening and upper edges together. Trim corners and seam allowances.

18. Turn facing to **INSIDE**. Press. Pin facing $1/8"$ (3mm) over seam, placing pins on the **OUTSIDE**. On **OUTSIDE**, stitch in the ditch or groove of the seam.

FINISHING

19. Hand sew hook and eye closures to markings on yoke facing.

20. FINISH lower edge of skort pant legs. Press up $1"$ (2.5cm) hem. Starting and ending at the side seam, stitch $3/4"$ (2cm) above lower edge, keeping the skort overlay free.





Congrats!

You've completed your sewing adventure

SHARE YOUR LOOK



Post your pattern and tag us using [#simplicitypatterns](#)
[@simplicity_creative_group](#)
[@simplicitymccallsuk](#)
[@simplicitymccallsaustralia](#)
for a chance to be featured on our social media.

Look for more PDF patterns at [simplicity.com](#) or for customers outside the U.S. and Canada visit [sewdirect.com](#) and [sewdirect.com.au](#)

Have a question or need help with your sewing project contact us:
[Simplicity.com](#) [Sewdirect.com](#) [Sewdirect.com.au](#)

Simplicity
by design