

S3114

Simplicity®



A



B



C



B



Designed and printed in USA.

Average

GIRLS' TRENCH COAT IN THREE LENGTHS

Suggested Fabrics: Broadcloth, Cotton Blends, Gabardine, Nylon Blends, Polyester Blends, Ripstop Nylon. **Interfacing:** Lightweight Fusible.

Notions: A,B,C: Nine 3/8" (2cm) buttons.

Sizes	7	8	10	12	14	
BODY MEASUREMENTS: Select pattern size based on body measurements						
Chest	26	27	28½	30	32	Ins.
Waist	23	23½	24½	25½	26½	"
Hip	27	28	30	32	34	"
Back-neck to waist	11½	12	12½	13½	14½	"
Height	50	52	56	58½	61	"

Trench Coat A

45**	2	2½	2¼	2½	2½	Yds.
60**	1½	1½	1½	1½	1½	"

Contrast (Upper Collar, Undercollar, Tie Belt)

45, 60**	1	1	1½	1½	1½	Yds.
----------	---	---	----	----	----	------

Interfacing - 20" - 1½ yds.

Trench Coat B

45**	3%	3%	3%	4	4%	Yds.
60**	2½	2½	2½	2½	3%	"

Interfacing - 20" - 2 yds.

Trench Coat C

45**	3%	4	4%	4%	4%	Yds.
60**	2½	2½	3	3¼	3%	"

Interfacing - 20" - 2½ yds.

FINISHED GARMENT MEASUREMENTS (Includes Design and Wearing Ease)

A,B,C Chest	32¼	33¼	34¼	36¼	38¼	Ins.
A,B,C Waist	28	29	30½	32	34	"
Width, lower edge						
Trench Coat A	58	59	61	63	65	Ins.
Trench Coat B	59	60	62	64	66	"
Trench Coat C	59½	60½	62½	64½	66½	"
Finished back length from base of neck						
Trench Coat A	15	16¼	18½	20½	22½	Ins.
Trench Coat B	28	29¼	31½	33½	35½	"
Trench Coat C	35	36¼	38½	40½	42½	"

*with nap **without nap

Moins Facile

MANTEAU TRENCH EN TROIS LONGUEURS POUR FILLES

Tissus Conseillés: Broadcloth, Cottonnades, Gabardine, Mélanges de nylon, Mélanges de polyester, Nylon indéchirable. **Entoilage:** Thermocollant léger.

Mercerie: A,B,C: 9 boutons de 2cm.

Tailles	7	8	10	12	14	
MESURES DU CORPS: Choisissez la taille du patron basée sur les mesures du corps						
Poitrine	66	68.5	72.5	76	81.5	cm
Taille	58.5	59.5	62	65	67.5	"
Hanches	68.5	71	76	81.5	86.5	"
Dos du cou à la taille	29	30.5	32.5	34.5	36	"
Hauteur	127	132	143	149	155	"

Manteau Trench A

115cm*	1.8	1.9	2.1	2.2	2.3	m
150cm*	1.4	1.5	1.5	1.6	1.7	"

Contrast (Col supérieur, Dessous de col, Ceinture à nouer)

115, 150cm*	0.9	0.9	1.0	1.0	1.0	m
-------------	-----	-----	-----	-----	-----	---

Entoilage - 51cm - 1.4m

Manteau Trench B

115cm*	3.1	3.2	3.4	3.7	3.9	m
150cm*	2.3	2.4	2.5	2.6	2.7	"

Entoilage - 51cm - 1.8m

Manteau Trench C

115cm*	3.4	3.7	3.9	4.2	4.3	m
150cm*	2.5	2.6	2.7	3.0	3.1	"

Entoilage - 51cm - 2.1m

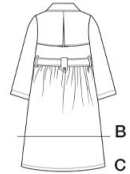
MESURES DES VÊTEMENTS FINI (Motif et aisance de port compris)

A,B,C Poitrine	82	84	88	92	97	cm
A,B,C Taille	71	74	77	81	86	"
Largueur à l'ourlet						
Manteau Trench A	147	150	155	160	165	cm
Manteau Trench B	150	152	157	163	168	"
Manteau Trench C	152	154	159	164	170	"
Longueur finie - dos, votre nuque à l'ourlet						
Manteau Trench A	38	43	48	53	58	cm
Manteau Trench B	71	76	81	86	91	"
Manteau Trench C	89	93	98	104	109	"

*avec sens **sans sens



A



B

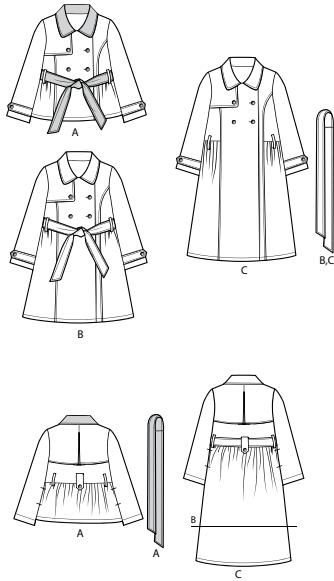
C



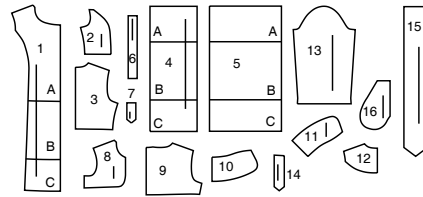
B,C

Simplicity®

Thank you for purchasing this Simplicity pattern. We made every effort to provide you with a high quality product.



16 PIECES



- 1 Front-A,B,C
- 2 Upper Side Front-A,B,C
- 3 Upper Back-A,B,C
- 4 Lower Side Front-A,B,C
- 5 Lower Back-A,B,C
- 6 Carrier-A,B,C
- 7 Back Tab-A,B,C
- 8 Front Shield-A,B,C
- 9 Back Shield-A,B,C
- 10 Upper Collar-A,B,C
- 11 Undercollar-A,B,C
- 12 Back Facing-A,B,C
- 13 Sleeve-A,B,C
- 14 Sleeve Tab-A,B,C
- 15 Tie Belt-A,B,C
- 16 Pocket-B,C

General Directions

The Pattern

- SYMBOLS**
- GRAIN LINE Place on straight grain of fabric parallel to selvage
- PLACE SOLID LINE on fold of fabric.
- CENTER FRONT OR BACK of garment.
- NOTCHES
- DOTS
- CUTTING LINE
- LENGTHEN OR SHORTEN LINES

SEAM ALLOWANCE: 5/8" (1.5cm) unless otherwise stated is included but not printed on MULTI-SIZE PATTERNS. Mark your size with colored felt tip pen. See chart on tissue for how to use MULTI-SIZE PATTERNS.

ADJUST IF NEEDED
Make adjustments before placing pattern on fabric.

TO LENGTHEN:
Cut pattern between lengthen or shorten lines. Spread pattern evenly, the amount needed and tape to paper.

TO SHORTEN:
At lengthen or shorten lines, make an even pleat taking up amount needed. Tape in place.

When lengthen or shorten lines are not given, make adjustments at lower edge of pattern.

Cutting/Marking

BEFORE CUTTING:
PRESS pattern pieces with a warm dry iron. PRE-SHRINK fabric by pre-washing washables or steam-pressing non-washables.

CIRCLE your cutting layout.

PIN pattern to fabric as shown in Cutting Layouts.

• FOR DOUBLE THICKNESS: Fold fabric with RIGHT sides together.

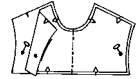
• FOR SINGLE THICKNESS: Place fabric RIGHT side up.

• FOR PILE, SHADED OR ONE WAY DESIGN FABRICS: Use "with nap" layouts

AFTER CUTTING:
Transfer markings to WRONG side of fabric before removing pattern. Use pin and chalk method or dressmaker's tracing paper and wheel.

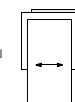
To Quick Mark:

- Snip edge of fabric to mark notches, ends of fold lines and center lines.
- Pin mark dots.



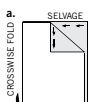
SPECIAL CUTTING NOTES

★ If layout shows a piece extending past fold, cut out all pieces except piece that extends.

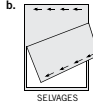


Open out fabric to single thickness. Cut extending piece on RIGHT side of fabric in position shown.

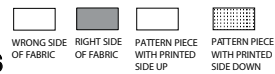
✳ Mark small arrows along both selvages indicating direction of nap or design. Fold fabric crosswise with RIGHT sides together, and cut along fold (a).



Turn one fabric layer around so arrows on both layers go in the same direction. Place RIGHT sides together (b).



Cutting Layouts

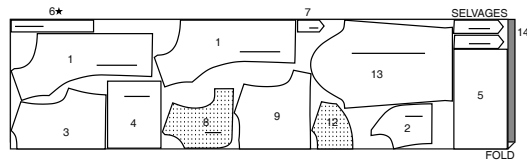


POSITION OF PATTERN PIECES MAY VARY SLIGHTLY ACCORDING TO YOUR PATTERN SIZE

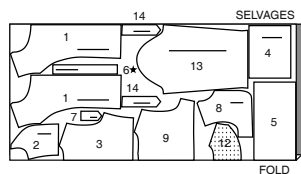
VIEW A

USE PIECES 1 2 3 4 5 6 7 8 9 12 13 14

45" (115CM) WITH NAP ALL SIZES



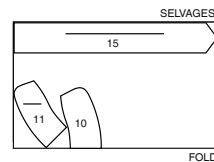
60" (150CM) WITH NAP ALL SIZES



A CONTRAST: TIE BELT, COLLAR

USE PIECES 10 11 15

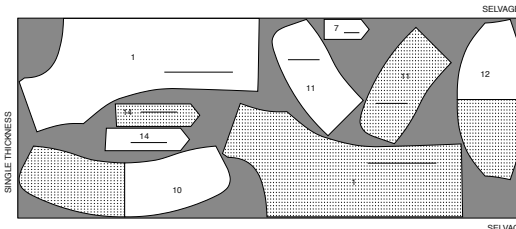
45" TO 60" (115CM TO 150CM) WITH NAP ALL SIZES



INTERFACING A

USE PIECES 1 7 10 11 12 14

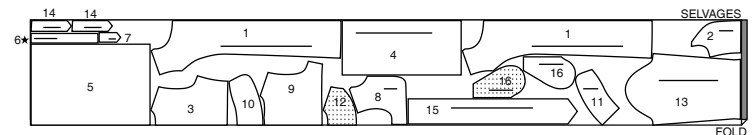
20" (51CM) WITHOUT NAP ALL SIZES



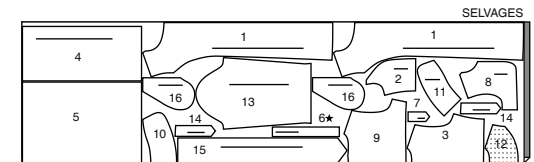
VIEW B

USE PIECES 1 2 3 4 5 6 7 8 9 10 11 12 13 14 15 16

45" (115CM) WITH NAP ALL SIZES



60" (150CM) WITH NAP ALL SIZES



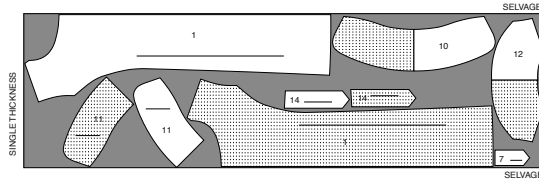
S3114

2 of 4

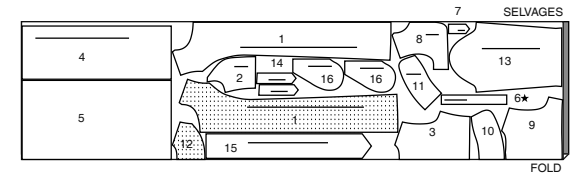
INTERFACING B

USE PIECES 1 7 10 11 12 14

20" (51CM)
WITHOUT NAP
ALL SIZES



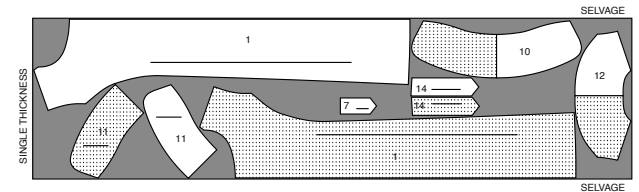
60" (150CM)
WITH NAP
ALL SIZES



INTERFACING C

USE PIECES 1 7 10 11 12 14

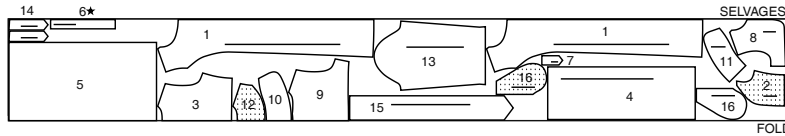
20" (51CM)
WITHOUT NAP
ALL SIZES



VIEW C

USE PIECES 1 2 3 4 5 6 7 8 9 10 11 12 13 14 15 16

45" (115CM)
WITH NAP
ALL SIZES



SEWING TUTORIALS



Build your skills viewing short, easy-to-follow videos at simplicity.com/sewingtutorials

Sewing Directions

FABRIC KEY RIGHT SIDE WRONG SIDE INTERFACING LINING LINING

Read General Directions on page 1 before you begin.
Sewing methods in **BOLD TYPE** have Sewing Tutorial Video available. Scan QR CODE to watch videos:

EASE/GATHER – See **Gathering**: “sewing two row gathers” video.
EDGE STITCH – See **Machine Stitches**: “how to sew an edgestitch” video.

NARROW HEM – See **Hems**: “sewing narrow hems” video.
SET IN SLEEVE – See **Armholes/Sleeves**: “sewing a set in sleeve” video.

SLIPSTITCH – See **Hand Stitching**: “how to slip stitch” video.
STAYSTITCH – See **Machine Stitches**: “how to do stay stitching” video.

STITCH IN THE DITCH – See **Machine Stitches**: “how to stitch in the ditch” video.

TOPSTITCH – See **Machine Stitches**: “how to topstitch” video.

TRIM SEAM – See **Seams**: “how to trim, clip and layer seams” video.

UNDERSTITCH – See **Machine Stitches**: “how to understitch” video.

PATTERN PIECES WILL BE IDENTIFIED BY NUMBERS THE FIRST TIME THEY ARE USED.

STITCH 5/8" (1.5CM) SEAMS WITH RIGHT SIDES TOGETHER UNLESS OTHERWISE STATED.

TRENCH COAT A, B, C

INTERFACING

- To reduce bulk of seams, trim away interfacing along seamline on neck edge of FRONT (1) from shoulder edge to large dot and along armhole edge. Trim away interfacing along seamline on neck and armhole edges of BACK FACING (12), and along seamline on neck edge of UPPER COLLAR (10) and UNDERCOLLAR (11). Pin interfacing to WRONG side of front facing, back facing, BACK TAB (7), upper collar, undercollar, and SLEEVE TAB (14). Fuse interfacing in place following manufacturer's directions.

FRONT AND BACK

- To **STAYSTITCH** neck edge of FRONT (1) and UPPER BACK (3), stitch 1/2" (1.3cm) from cut edge in the direction of the arrows. This stitching stays in permanently to prevent stretching on curved edges. (Shown only in the first illustration.)

- With **RIGHT** sides together and raw edges even, pin **UPPER SIDE FRONT** (2) to upper back at side edges, matching notches. Stitch, leaving an opening on **LEFT** side edge above the notch.

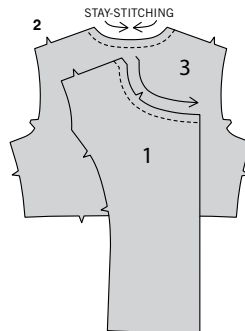
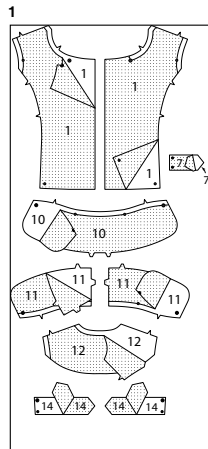
POCKET B, C

- With **RIGHT** sides together and raw edges even, pin **POCKET** (16) sections to **LOWER SIDE FRONT** (4) and **LOWER BACK** (5), matching large dots. Stitch in 3/8" (1cm) seam.
- UNDERSTITCH** the lower side front pocket. Press seams toward pocket, pressing pockets out.
- Pin lower side front to lower back at side seams, matching large dots. Stitch side seams, leaving an opening between large dots. Stitch pocket edges together from side seam to upper edge.

- Clip garment back seam allowance below pocket. Press seam open below clip. Press pocket toward front. Baste upper edge of pocket to front, having raw edges even.

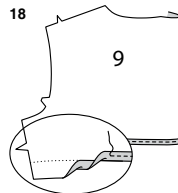
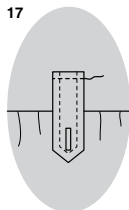
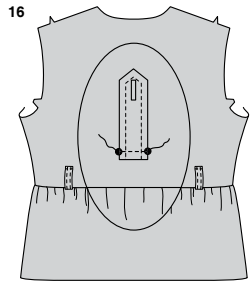
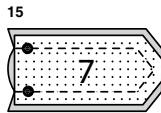
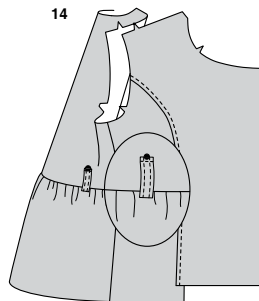
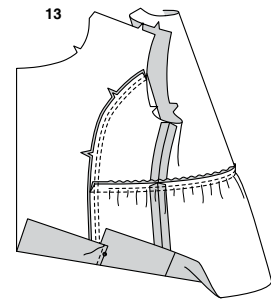
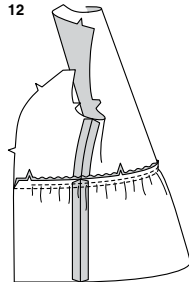
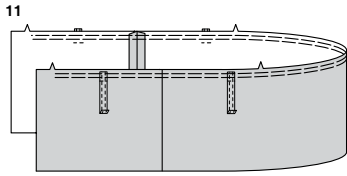
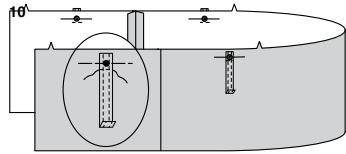
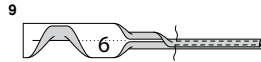
LOWER FRONT A

- With **RIGHT** sides together and raw edges even, pin **LOWER SIDE FRONT** (4) to **LOWER BACK** (5) at side edges, matching notches. Stitch.



S3114

3 of 4



CONTINUE AS FOLLOWS FOR ALL VIEWS

9. Fold CARRIER (6) in half, lengthwise with WRONG sides together. Press, setting in a crease. Open out long edges of carrier and turn them to WRONG side so that they meet at the crease. Press. Fold carrier in half lengthwise, bringing pressed edges together. **EDGESTITCH** close to both long edges.

10. Cut carrier into four sections, 3-1/2" (9cm) long. Press under one end of each 1/4" (6mm). On OUTSIDE, pin remaining ends to lower side front and lower back over large dots having raw edges even. Baste. Stitch again 1/4" (6mm) from basting across carriers, using a machine-stitch.

11. To **GATHER** upper edge of lower front and back between the front notches, loosen needle tension slightly. On OUTSIDE, stitch 5/8" (1.5cm) from cut edge using a long stitch. Stitch again 1/4" (6mm) from the first stitching within the seam allowance.

12. With RIGHT sides together and raw edges even, pin upper edge of lower side front and lower back to lower edge of upper side front and upper back, matching seams and notches, pulling up gathering stitches evenly. Baste. Stitch. Press seam toward upper front and back.

13. With RIGHT sides together and raw edges even, pin front to side front along side front edges, matching small dots and notches. Stitch. Press seam toward front. On OUTSIDE, **TOPSTITCH** front 1/4" (6mm) from seam.

14. Press up pressed edges of carriers and pin to upper front and back at large dots. **EDGESTITCH** in place close to pressed edges.

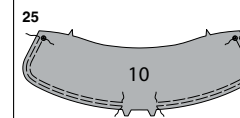
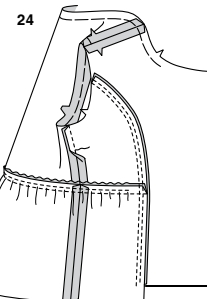
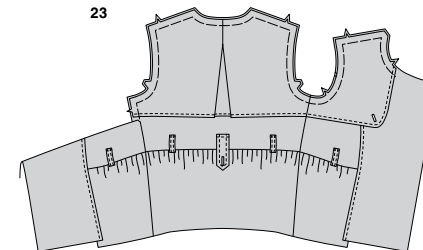
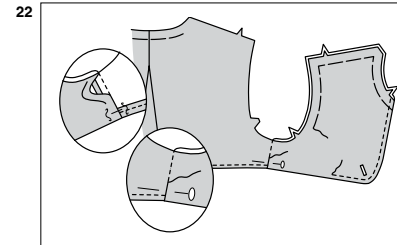
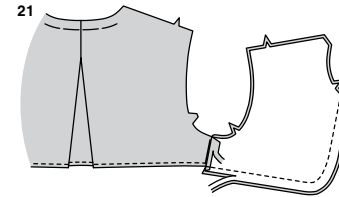
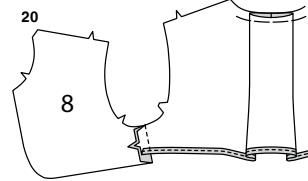
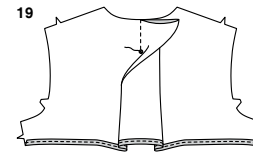
15. With RIGHT sides together and raw edges even, pin BACK TAB (7) sections. Stitch in a 3/8" (1cm) seam, leaving end with small dots open. **TRIM SEAM.**

16. Turn tab; press. **TOPSTITCH** 1/4" (6mm) from finished edge. Make buttonhole at marking. With RIGHT sides together, pin tab to upper back, matching small dots. Stitch. Trim seam close to stitching.

17. Press tab toward lower back. **TOPSTITCH** tab 1/4" (6mm) from seam.

SHIELD

18. Press under 5/8" (1.5cm) on lower edge of BACK SHIELD (9). To form **NARROW HEM**, tuck under raw edge to meet crease. Press. Stitch hem in place.



19. Fold back shield along center with RIGHT sides together, matching small dots and stitching lines. Stitch along stitching line from upper edge to small dot, back-stitching at dot to reinforce the seam. On INSIDE, press pleat flat bringing stitching to center. Baste across raw edge.

20. With RIGHT sides together, pin FRONT SHIELD (8) to back shield at side edges, matching notches. (Front shield extends 5/8" (1.5cm) below finished edge of back shield.) Press seam toward front.

21. Press under a scant 5/8" (1.5cm) on side edge of front shield facing. Trim to 1/4" (6mm). With RIGHT sides together and raw edges even, pin front shield facing to front shield. Stitch front and lower edges. **TRIM SEAM.**

22. Turn front shield facing to INSIDE; press. On INSIDE, pin side edge of facing over seam, placing pins on OUTSIDE. On OUTSIDE, **STITCH IN THE DITCH** of the seam, catching in pressed edge of facing on the INSIDE. On OUTSIDE, **TOPSTITCH** front shield 1/4" (6mm) from finished edge. Baste raw edges together. Make buttonhole at marking.

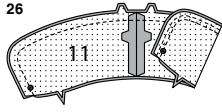
23. On OUTSIDE, pin shield to coat at neck and shoulder edges, disregarding LEFT notch. Baste.

24. Stitch front to back at shoulder edges and LEFT side seam above the notch.

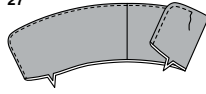
COLLAR

25. To **EASE UPPER COLLAR** (10) between the large dot and the double notches, loosen needle tension slightly. On OUTSIDE, stitch 5/8" (1.5cm) from cut edge using a long stitch. Stitch again 1/4" (6mm) from the first stitching within the seam allowance.

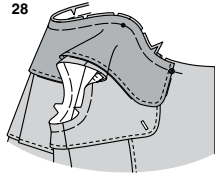
26



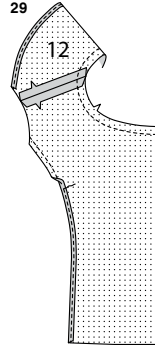
27



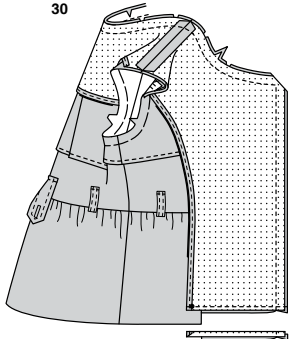
28



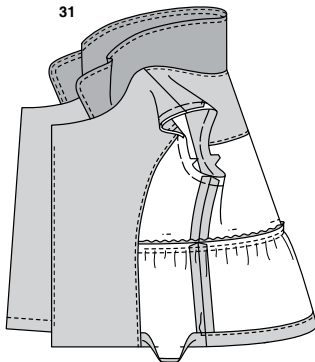
29



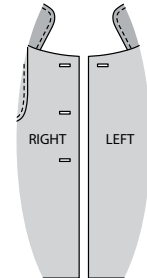
30



31



32



33



26. Stitch center back edges of UNDERCOLLAR (11). With RIGHT sides together and raw edges even, pin upper collar to undercollar, matching large dots and notches, pull up ease stitches to fit. Stitch, leaving single notched edges open. **TRIM SEAM.**

27. UNDERSTITCH the undercollar. Turn collar; press. Baste raw edges together. On OUTSIDE, TOPSTITCH 1/4" (6mm) from finished edge.

28. Clip neck edge of coat to staystitching. On OUTSIDE, pin collar (undercollar side) to neck edge, matching centers and large dots, placing small dots at shoulder seams. Baste.

FACING

29. Pin front facing to BACK FACING (12) at shoulder edges. Stitch. Machine-stitch a generous 1/2" (1.3cm) from neck edge.

To finish inner edges (leaving armhole edges raw), stitch 1/4" (6mm) from raw edge and finish by turning in along stitching and stitching close to fold, or finish with pinking, overcasting, overlocking.

30. With RIGHT sides together and raw edges even, pin facing to coat, matching centers, seams, and notches. Stitch neck and front edge. **TRIM SEAM.** Stitch across lower edge of facing. Trim lower edge of front and facing close to stitching. Do not trim seam allowance of lower side front.

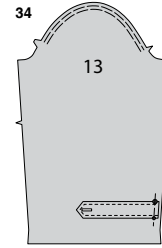
31. UNDERSTITCH front and back neck edge of facing. Turn facing to INSIDE; press, pressing up hem allowance. Turn under raw edge 1/4" (6mm); press. **EDGESTITCH** close to inner pressed edge, continuing stitching across facing to front edge. Baste facing to coat at armhole edges.

32. Make buttonholes in RIGHT front at markings. Make upper buttonhole in LEFT front at marking.

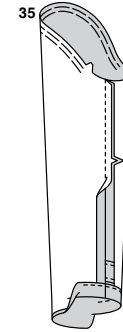
SLEEVE

33. With RIGHT sides together and raw edges even, pin SLEEVE TAB (14) sections. Stitch in a 3/8" (1cm) seam, leaving end with small and large dots open. **TRIM SEAM.**

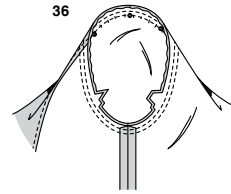
34



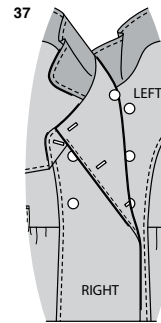
35



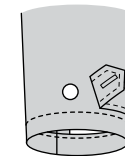
36



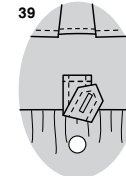
37



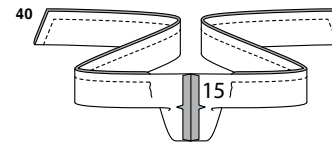
38



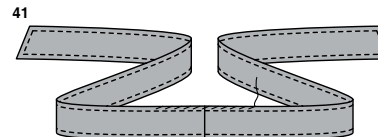
39



40



41



34. Turn tab; press. **TOPSTITCH** 1/4" (6mm) from finished edge. Make buttonhole at marking. **EASE** upper edge of SLEEVE (13) between the notches. Pin WRONG side of sleeve tab to RIGHT side of sleeve at front edge, matching small and large dots. Baste.

35. Stitch underarm edges of sleeve. Press up hem allowance on lower edge of sleeve. Turn under raw edge 1/4" (6mm); press. **EDGESTITCH** close to inner pressed edge.

36. To **SET IN SLEEVE**, turn sleeve RIGHT side out. Hold coat WRONG side out with armhole toward you. With RIGHT sides together, pin sleeve to armhole edge with center small dot at shoulder seam, matching underarm seams, notches and remaining small dots. Pull up ease stitches to fit. To distribute fullness evenly, slide fabric along bobbin threads until there are no puckers or tucks on the seam line. Baste. Stitch. Stitch again 1/8" (3mm) from first stitching. Trim seam below notches close to stitching. Press only the seam allowance, shrinking out fullness.

FINISHING

37. On OUTSIDE, sew buttons to LEFT front at small dots, and RIGHT front at lower small dots. Sew button on INSIDE of RIGHT front at upper small dot.

38. Sew buttons to sleeve at small dots.

39. Sew button to small dot on lower back under tab.

40. Stitch notched ends of TIE BELT (15) sections. Fold belt in half, lengthwise, with RIGHT sides together. Stitch, leaving an opening to turn. **TRIM SEAM.**

41. Turn belt; press. **SLIPSTITCH** opening edges together. **TOPSTITCH** 1/4" (6mm) from finished edges. Thread belt through carriers and tab and tie when wearing.



Congrats!

You've completed your sewing adventure

SHARE YOUR LOOK



Post your pattern and tag us using [#simplicitypatterns](#)
[@simplicity_creative_group](#)
[@simplicitymccallsuk](#)
[@simplicitymccallsaustralia](#)
for a chance to be featured on our social media.

Look for more PDF patterns at [simplicity.com](#) or for customers outside the U.S. and Canada visit [sewdirect.com](#) and [sewdirect.com.au](#)

Have a question or need help with your sewing project contact us:
[Simplicity.com](#) [Sewdirect.com](#) [Sewdirect.com.au](#)

Simplicity
by design