

S3113

Simplicity®



easy-to-sew



Easy

## CHILDREN'S OR GIRLS' AND BOYS' JACKET, SHORTS AND PANTS

**Suggested Fabrics:** Chino, Corduroy, Cotton Blends, Denim, Linen Blends, Stretch Wovens.  
**Interfacing A:** Lightweight Fusible.

**Notions: A,B,C:** Yarn or embroidery floss (optional for blanket stitch), purchased appliques (opt.). **Also for A:** Seven ¾" (1.5cm) buttons. **Also for B,C:** 1" (2.5cm) elastic: ¾ yd. (0.8m) for Children, 1 yd. (1.0m) for Boys or Girls.

Sizes	3	4	5	6	7	8	10	12	14	
<b>BODY MEASUREMENTS: Select pattern size based on body measurements</b>										
Chest	22	23	24	25	26	27	28½	30	32	Ins.
Waist	20½	21	21½	22	23	23½	24½	25½	26½	"
Hip	—	24	25	26	27	28	30	32	34	"
Back-neck to waist	9	9½	10	10½	11½	12	12¾	13½	14½	"
Approx. Height	38	41	44	47	50	52	56	58½	61	"
Jacket A	45**	1¼	1¼	1¼	1¼	1¼	1¼	1¼	1¼	Yds.
	60**	1	1	1	1	1	1	1	1	"
Interfacing	20" - 1 yd.									
Shorts B	45**	¾	¾	¾	¾	¾	¾	¾	1	Yd.
	60**	¾	¾	¾	¾	¾	¾	¾	¾	"
Pants C	45**	1	1¼	1¼	1¼	1¼	2	2¼	2¼	Yds.
	60**	¾	¾	1	1	1¼	1¼	1¼	1¼	"

## FINISHED GARMENT MEASUREMENTS (Includes Design and Wearing Ease)

A Chest	31½	32½	33½	34½	36½	37½	39	40½	42½	Ins.
A Waist	31½	32½	33½	34½	36½	37½	39	40½	42½	"
B,C Hip	25	26	27	28	30½	31½	33	34½	36½	"
Width, lower edge										
Jacket A	31½	32½	33½	34½	36½	37½	39	40½	42½	Ins.
Width, each leg										
Shorts B	15¼	16	16¾	17½	18	18¾	19¾	20¾	22	Ins.
Pants C	11½	12	12½	13	12¼	12¾	13½	14¼	14¾	"
<b>Finished side length from waist (sits below waist: ½" for Children, 1" for Boys/Girls)</b>										
Shorts B	8¾	9	9¾	9¾	11½	11¾	12¾	12¾	13¾	Ins.
Pants C	22¼	23¾	25¼	26¾	30¾	32	34¼	37	38½	"

\*with nap \*\*without nap

Facile

## VESTE, SHORT ET PANTALON POUR ENFANTS OU FILLES ET GARÇONS

**Tissus Conseillés:** Chino, Velours côtelé, Cotonnades, Denim, Lin mélangés, Tissus tissés extensibles. **Entoilage A:** Thermocollant léger.

**Mercerie: A,B,C:** Fil ou fil à broder (facultatif pour blanket stitch), appliques achetées (facultatif). **Aussi pour A:** 7 boutons de 1.5cm. **Aussi pour B,C:** Élastique de 2.5cm: 0.8m pour Enfants, 1.0m pour Garçons ou Fillettes.

Tailles	3	4	5	6	7	8	10	12	14	
<b>MESURES DU CORPS: Choisissez la taille du patron basée sur les mesures du corps</b>										
Poitrine	56	58	61	64	66	69	73	76	81	cm
Taille	52	53	55	56	58	60	62	65	67	"
Hanches	—	61	64	66	69	71	76	81	87	"
Dos du cou à la taille	23	24	25.5	27	29.5	31	32.5	34.5	36	"
Taille approx.	97	104	112	119	127	132	142	149	155	"
Veste A	115cm*	1.1	1.1	1.1	1.1	1.6	1.6	1.6	1.7	m
	150cm*	0.9	0.9	0.9	0.9	1.3	1.3	1.3	1.3	"
Entoilage	51cm - 0.9m									
Short B	115cm*	0.6	0.6	0.6	0.7	0.7	0.8	0.8	0.8	m
	150cm*	0.6	0.6	0.6	0.6	0.7	0.7	0.7	0.7	"
Pantalon C	115cm*	0.9	1.0	1.0	1.0	1.4	1.6	1.7	1.9	m
	150cm*	0.8	0.8	0.9	0.9	1.0	1.1	1.3	1.3	"

## MESURES DES VÊTEMENTS FINI (Motif et aisance de port compris)

A Poitrine	80	83	85	88	93	95	99	103	108	cm
A Taille	80	83	85	88	93	95	99	103	108	"
B,C Hanches	64	66	69	71	77	80	84	88	93	"
Largeur à l'ourlet										
Veste A	80	83	85	88	93	95	99	103	108	cm
Largeur, chaque jambe										
Short B	39	41	43	44	46	48	50	53	56	cm
Pantalon C	29	30	32	33	31	33	34	36	37	"
Longueur finie - côté, taille à l'ourlet										
Short B	22	23	24	25	29	30	31	32	34	cm
Pantalon C	57	60	64	68	78	81	88	94	98	"

\*avec sens \*\*sans sens



A



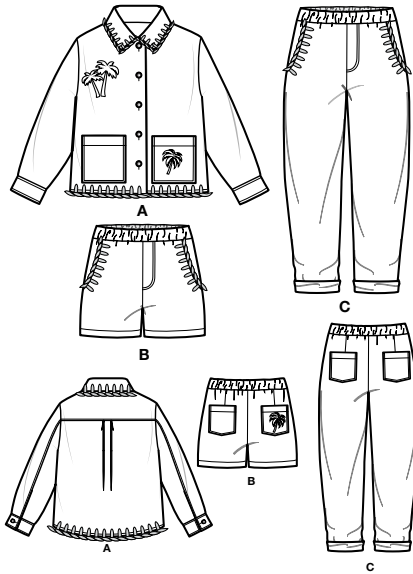
B



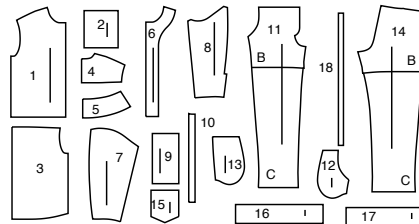
C

# Simplicity®

Thank you for purchasing this Simplicity pattern.  
We made every effort to provide you with a high quality product.



18 PIECES



- 1 Front-A
- 2 Pocket-A
- 3 Back-A
- 4 Yoke Back-A
- 5 Collar-A
- 6 Front Facing-A
- 7 Upper Sleeve-A
- 8 Undersleeve-A
- 9 Cuff-A
- 10 Buttonhole Guide-A
- 11 Front-B,C
- 12 Pocket Facing-B,C
- 13 Side Front and Pocket-B,C
- 14 Back-B,C
- 15 Back Pocket-B,C
- 16 Front Casing-B,C
- 17 Back Casing-B,C
- 18 Guide for Elastic-B,C



www.simplicity.com



info@simplicity.com



1-888-588-2700

## General Directions

### The Pattern

#### SYMBOLS

- ↔ GRAIN LINE Place on straight grain of fabric parallel to selvage
- ↓ PLACE SOLID LINE on fold of fabric.
- CENTER FRONT OR BACK of garment.
- ▽ NOTCHES
- DOTS
- CUTTING LINE
- == LENGTHEN OR SHORTEN LINES

SEAM ALLOWANCE: 5/8" (1.5cm) unless otherwise stated is included but not printed on MULTI-SIZE PATTERNS. Mark your size with colored felt tip pen. See chart on tissue for how to use MULTI-SIZE PATTERNS.

#### ADJUST IF NEEDED

Make adjustments before placing pattern on fabric.

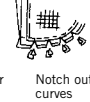
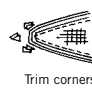
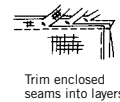
**TO LENGTHEN:**  
Cut pattern between lengthen or shorten lines. Spread pattern evenly, the amount needed and tape to paper.

**TO SHORTEN:**  
At lengthen or shorten lines, make an even pleat taking up amount needed. Tape in place.

When lengthen or shorten lines are not given, make adjustments at lower edge of pattern.

### Sewing

- SEW garment following **Sewing Directions**.
- PIN or machine-baste seams matching notches.
- STITCH 5/8" (1.5 cm) seams unless otherwise stated.
- PRESS seams open unless otherwise indicated clipping when necessary so seams will lie flat.
- TRIM seams to reduce bulk, as shown below.



### Cutting/Marking

#### BEFORE CUTTING:

PRESS pattern pieces with a warm dry iron. PRE-SHRINK fabric by pre-washing washables or steam-pressing non-washables.

CIRCLE your cutting layout.

PIN pattern to fabric as shown in Cutting Layouts.

• FOR DOUBLE THICKNESS: Fold fabric with RIGHT sides together.

• FOR SINGLE THICKNESS: Place fabric RIGHT side up.

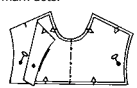
• FOR PILE, SHADED OR ONE WAY DESIGN FABRICS: Use "with nap" layouts

#### AFTER CUTTING:

Transfer markings to WRONG side of fabric before removing pattern. Use pin and chalk method or dressmaker's tracing paper and wheel.

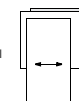
#### To Quick Mark:

- Snip edge of fabric to mark notches, ends of fold lines and center lines.
- Pin mark dots.

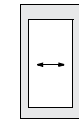


### SPECIAL CUTTING NOTES

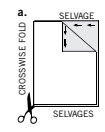
★ If layout shows a piece extending past fold, cut out all pieces except piece that extends.



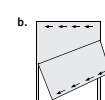
Open out fabric to single thickness. Cut extending piece on RIGHT side of fabric in position shown.



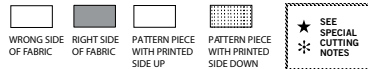
✱ Mark small arrows along both selvages indicating direction of nap or design. Fold fabric crosswise with RIGHT sides together, and cut along fold (a).



Turn one fabric layer around so arrows on both layers go in the same direction. Place RIGHT sides together (b).



## Cutting Layouts



POSITION OF PATTERN PIECES MAY VARY SLIGHTLY ACCORDING TO YOUR PATTERN SIZE

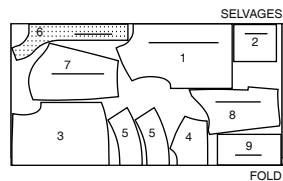
### JACKET A

USE PIECES 1 2 3 4 5 6 7 8 9

45" (115CM)

WITH NAP

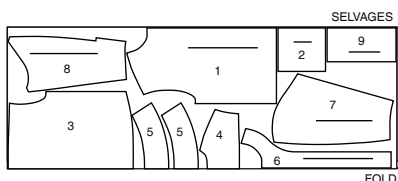
CHILD'S SIZES 3 4 5 6



45" (115CM)

WITH NAP

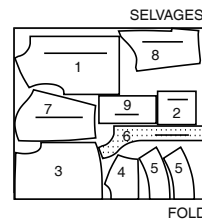
GIRL'S SIZES 7 8 10 12 14



60" (150CM)

WITH NAP

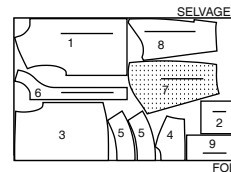
CHILD'S SIZES 3 4 5 6



60" (150CM)

WITH NAP

GIRL'S SIZES 7 8 10 12 14



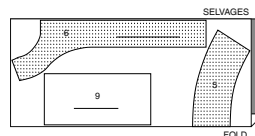
### INTERFACING

USE PIECES 5 6 9

45" (115CM)

WITHOUT NAP

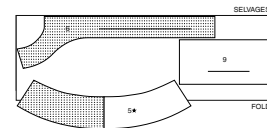
CHILD'S SIZES 3 4 5 6



45" (115CM)

WITHOUT NAP

GIRL'S SIZES 7 8 10 12 14



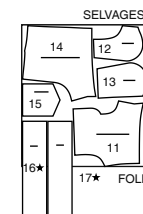
### SHORTS B

USE PIECES 11 12 13 14 15 16 17

45" (115CM)

WITH NAP

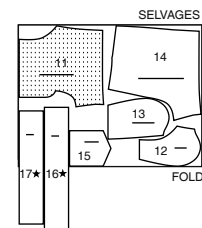
CHILD'S SIZES 3 4 5 6



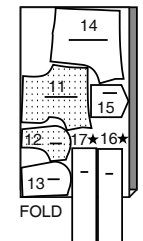
45" (115CM)

WITH NAP

GIRL'S SIZES 7 8 10 12 14



SELVAGES



60" (150CM)

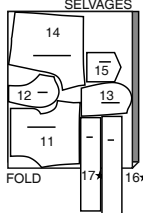
WITH NAP

CHILD'S SIZES 3 4 5 6

60" (150CM)

WITH NAP

GIRL'S SIZES 7 8 10 12 14



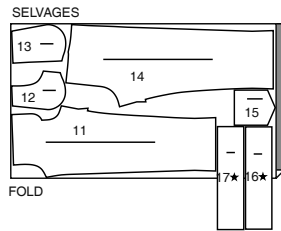
CUTTING LAYOUTS CONTINUED ON PAGE 2

**S3113**

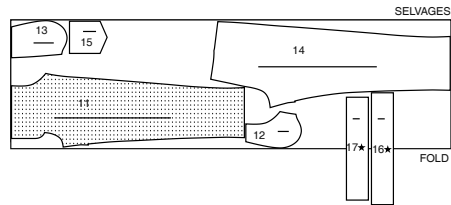
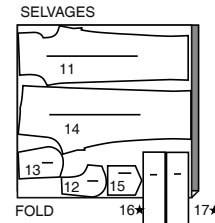
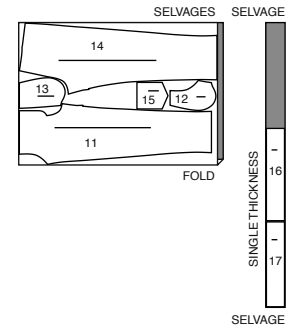
2 of 4

**PANTS C**

USE PIECES 11 12 13 14 15 16 17

45" (115CM)  
WITH NAP  
CHILD'S SIZES 3 4 5 6**SHORTS B**

USE PIECES 11 12 13 14 15 16 17

45" (115CM)  
WITH NAP  
GIRL'S SIZES 7 8 10 12 1460" (150CM)  
WITH NAP  
CHILD'S SIZES 3 4 5 660" (150CM)  
WITH NAP  
GIRL'S SIZES 7 8 10 12 14

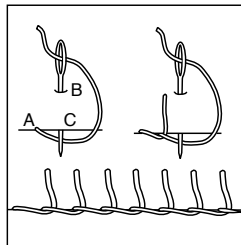
## SEWING TUTORIALS

Build your skills viewing short, easy-to-follow videos at  
simplicity.com/sewingtutorials**Sewing Directions**
**FABRIC KEY**

RIGHT SIDE	WRONG SIDE	INTERFACING	LINING	LINING
------------	------------	-------------	--------	--------

Sewing methods in **BOLD TYPE** have Sewing Tutorial Video available.  
Scan **QR CODE** to watch videos:

**EASE** - See **How to "ease"** video.  
**SLEEVE** - See **Armholes/Sleeves: "sewing a set in sleeve"** video.  
**DART** - See **Darts: "sewing flat dart"** video.  
**NARROW HEM** - See **Hems: "sewing narrow hems"** video.  
**REINFORCE** - See **Machine Stitches: "how to reinforce"** video.  
**STAYSTITCH** - See **Machine Stitches: "how to do stay-stitching"** video.  
**TOPSTITCH** - See **Machine Stitches: "how to topstitch"** video.  
**UNDERSTITCH** - See **Machine Stitches: "how to understitch"** video.  
**FINISH** - See **Seams: "how to finish seam allowances"** video.  
**SLIPSTITCH** - Slide needle through a folded edge, then pick up a thread of underneath fabric.

**PATTERN PIECES WILL BE IDENTIFIED BY NUMBERS THE FIRST TIME THEY ARE USED.****STITCH SEAMS WITH RIGHT SIDES TOGETHER UNLESS OTHERWISE STATED.****NOTE:** Under each sub-heading, the first view will be illustrated, unless otherwise illustrated.**NOTE:** Fronts may be decorated with hand embroidery, machine embroidery or purchased appliqués.**BLANKET STITCH** - For blanket stitching, work with yarn or embroidery floss as many threads as desired and use a large eyed needle.To make blanket stitch, working from **LEFT** to **RIGHT**, bring needle out at **A** (finished edge).Insert at **B** (amount of spacing desired) then, with thread below needle come out at **C** directly below.Continue in same manner taking note that point **C** of first stitch is now **A**. Be sure to keep stitches and spaces even.**JACKET A****INTERFACING**

1. Trim corners of **INTERFACING**, as shown. Fuse interfacing to wrong side of each matching **FABRIC** section, following manufacturer's instructions.

**FRONT**

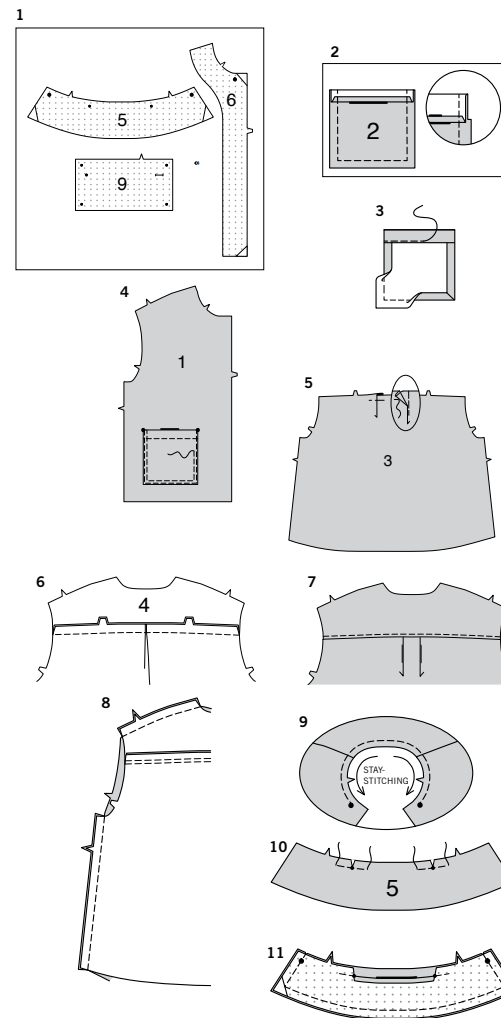
2. Press under 1/4"(6mm) on upper edge of **POCKET (2)**. Turn upper edge to **OUTSIDE** along foldline, forming facing. Stitch along seam line on raw edges. Trim seam allowance in the facing area to 1/4"(6mm).
3. Turn corners **RIGHT** side out, turning facing to the **WRONG** side. Press, pressing under raw edges along stitching, folding in corners. Stitch facing close to inner edge.
4. On **OUTSIDE**, pin pocket to each **FRONT (1)**, matching large dots. Stitch close to sides and lower edge and 1/4"(6mm) away.

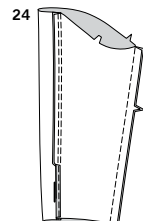
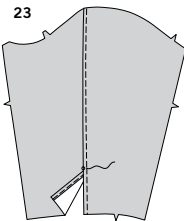
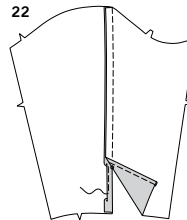
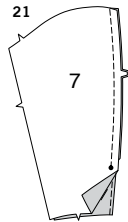
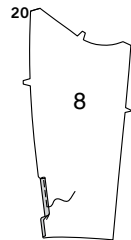
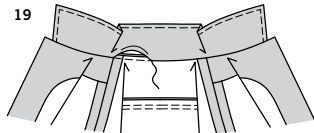
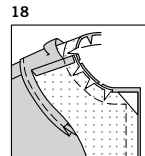
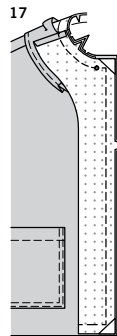
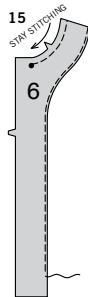
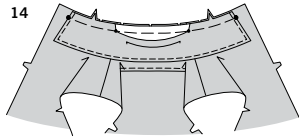
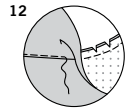
**BACK AND YOKE**

5. To make pleats on **BACK (3)**, on **OUTSIDE**, fold along solid lines. Bring folds to broken line in direction of arrows; pin. Baste across upper edge.
6. With **RIGHT** sides together, stitch **YOKE BACK (4)** to back, matching centers. Press seams toward yoke, pressing yoke out.
7. **TOPSTITCH** yoke along seam.
8. Stitch back to front at shoulders and sides.

**COLLAR**

9. **STAYSTITCH** jacket neck edge between large dots, in direction of arrows.
10. **REINFORCE** neck edge of interfaced **COLLAR (5)** section through small dots, as shown. Clip to small dots.
11. Turn under 5/8"(1.5cm) seam allowance between clips; press. Trim pressed edge to 3/8"(1cm). Stitch collar sections, **RIGHT** sides together, matching dots and centers, leaving notched edge free. Trim seams.





**12. UNDERSTITCH** long edge of interfaced collar as far as possible.

**13.** Turn collar **RIGHT** side out; press. Baste raw edges together.  
On **OUTSIDE**, **TOPSTITCH** ends and lower edge of collar.

**OPTIONAL:** Finish ends and lower edge of collar with a Blanket Stitch.

**14.** Pin collar to neck edge, matching notches, large dots, center backs and small dots to shoulder seams, clipping jacket neck edge where necessary. Baste, keeping pressed edge free.

#### FRONT FACING

**15. STAYSTITCH** neck edge of **FRONT FACING** (6) above large dot, in direction of arrow.  
**FINISH** inner edge of front facing.

**16.** Press under 5/8"(1.5cm) on shoulder edge of front facing. Trim pressed edge to 3/8"(1cm).

**17.** Pin facing to front and neck edges, matching dots, clipping facings where necessary. Stitch lower front and neck edge, keeping pressed-under edge of collar free.

**18.** Clip neck (collar) seam allowance at ends of facings. Trim seam allowances.

**19.** Turn facings to inside. Press seam allowances toward collar between clips.  
**SLIPSTITCH** pressed edge of collar over seam and facings to shoulder seams.

#### SLEEVE

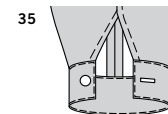
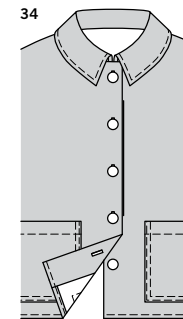
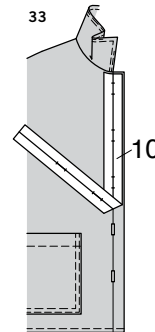
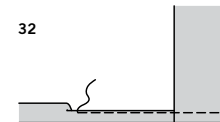
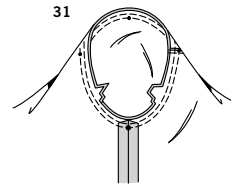
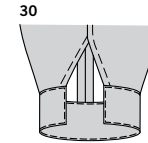
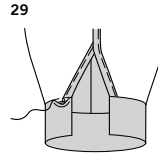
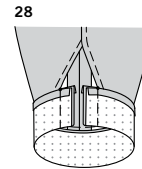
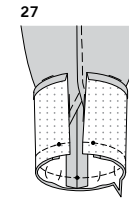
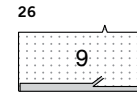
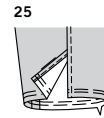
**20.** Turn under 1/4"(6mm) on **UNDER SLEEVE** (8) extension; press.  
Turn under 3/8"(1cm) on extension to inside; press. Stitch in place close to pressed edge.

**21.** Pin **UPPER SLEEVE** (7) to under sleeve together at back edges, matching notches and large dots. Stitch, leaving free below large dot.

**22.** Make a 5/8"(1.5cm) **NARROW HEM** on upper sleeve below large dot.

**23.** Press seam allowances toward upper sleeve.  
**TOPSTITCH** upper sleeve along seam, connecting with hem stitching.

**24.** Stitch remaining sleeve seam.



**25. EASE** lower edge of sleeve.

**26.** Press under 5/8"(1.5cm) on long un-notched edge of each **CUFF** (9). Trim pressed edge to 3/8"(1cm).

**27.** Pin cuff to sleeve, matching notches, center small dot to sleeve seam and remaining small dots to opening edges. Adjust ease; baste. Stitch; trim seams to 1/4"(6mm). Press seams toward cuff.

**28.** Fold cuff along foldline, **RIGHT** sides together. Stitch ends; trim seams.

**29.** Turn cuff **RIGHT** side out. **SLIPSTITCH** pressed edge over seam; press.

**30.** On outside, **TOPSTITCH** 1/4"(6mm) from all edges of cuff.

**31.** With **RIGHT** sides together, pin **SLEEVE** into armhole with center small dot at shoulder seam, matching large dot to side seam and remaining small dots. Baste. Stitch; Stitch again 1/4"(6mm) away in seam allowance. Trim close to second stitching. Turn seams toward sleeve.

#### FINISHING HEM

**32.** Turn up a 5/8"(1.5cm) hem on remainder of lower edge of jacket, turning in 1/4"(6mm) on raw edge. Stitch in place, continuing to front edges.  
**OPTIONAL:** Finish lower edge of jacket with a Blanket Stitch.

#### BUTTONHOLES AND BUTTONS

**33.** Place **BUTTONHOLE GUIDE** (10) on right front, having edge of tissue even with finished edge of jacket, as shown. Transfer markings. Make buttonholes on right front at markings.

**34.** Lap opening edges, matching centers. Using buttonholes as guides, make button markings on left front. Sew buttons at markings.

**35.** Make buttonhole in cuff at marking. Sew button to cuff at marking.

#### OPTIONAL PURCHASED APPLIQUES

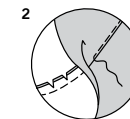
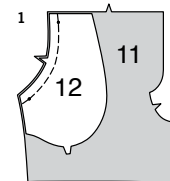
Apply purchased appliques to upper right front of jacket and left pocket as desired or as shown on pattern envelope, following manufacturer's directions.

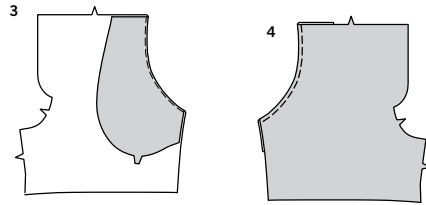
#### SHORTS B, PANTS C

##### FRONT

**1.** Stitch each **POCKET FACING** (12) section to each upper side edge of **FRONT** (11), matching dots; trim seam.

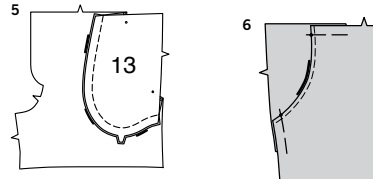
**2. UNDERSTITCH** pocket facing as shown.





**3.** Turn pocket facing to inside; press.

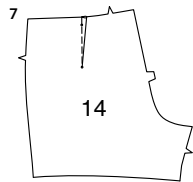
**4. TOPSTITCH** upper side edge of front.  
**OPTIONAL:** Finish side edge of front with a Blanket Stitch.



**5.** Stitch one **SIDE FRONT AND POCKET (13)** section to each pocket facing at outer edge, matching dots, keeping front free.

**6.** Baste upper and side edges.

#### BACK



**7.** To make **DART** on **BACK (14)**, with **RIGHT** sides together, bring broken lines together, matching small dots. Stitch along broken line from wide end to point. Press the dart flat along the stitching to "blend" the stitches, then press dart toward center back.

**8.** Press under 1/4" (6mm) on upper edge of **BACK POCKET (15)**. Turn upper edge to **OUTSIDE** along foldline, forming facing. Stitch along seam line on raw edges. Trim seam allowance in the facing area to 1/4"(6mm).

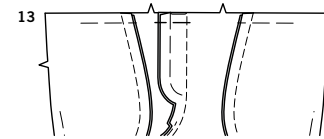
**9.** Turn corners **RIGHT** side out, turning facing to the **WRONG** side. Press, pressing under raw edges along stitching. Stitch facing close to inner edge.

**10.** On **OUTSIDE**, pin one pocket to each back, matching large dots. Stitch close to sides and lower edge and 1/4"(6mm) away.

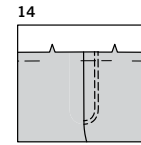
#### REMAINING SEAMS

**11.** Stitch back to front together at inner leg edges.

**12.** Stitch crotch seam and extension edges together along center front and center back, continuing along stitching line. Stitch again 1/4"(6mm) away along curve between notches. Trim close to second stitching. Baste extension edges along raw edges.



**13.** Turn extension toward left front along stitching line; press. Baste across upper edge.



**14.** On outside, stitch left front along stitching line. Stitch again 1/4"(6mm) away.



**15.** Stitch front to back at sides.

#### CASING AND ELASTIC

**16.** With **RIGHT** sides together, pin **FRONT CASING (16)** to **BACK CASING (17)**, matching notches and small dots. Stitch ends, leaving **LEFT** side seam free between small dots. Back-stitch at small dots to reinforce seam. Press seams open.

**17.** Fold casing in along foldline with **WRONG** sides together, having raw edges even. Baste raw edges together. The side with the opening is the underside of the casing.

**18.** With the underside of casing facing you, pin casing to garment, matching centers and side seams. Stitch along seam line. Stitch again 1/4"(6mm) from first stitching within seam allowance. Trim close to second stitching. Press seam toward garment, pressing casing out.

**19.** Cut a piece of elastic using **GUIDE FOR ELASTIC (18)** pattern piece.

**20.** Insert elastic through opening in casing. Overlap ends and hold with a safety pin. Try on garment and adjust to fit.

**21.** Stitch ends of elastic securely. Distribute fullness evenly.

**22. SLIPSTITCH** opening in casing.  
**TIP:** To secure elastic so it won't twist in wearing, stitch through all thicknesses of casing in the groove of each seam.

#### FINISHING HEMS B

**23.** Turn up a 1-1/4"(3.2cm) hem on lower edge of shorts. Press under 1/4"(6mm) on raw edge. Stitch close to inner pressed edge.

#### HEMS C

**24.** Turn up a 3"(7.5cm) hem on lower edge of pants. Press under 1/4"(6mm) on raw edge. Stitch close to inner pressed edge.

**25.** To form cuff, turn lower edge of pants to outside, just over hem stitching, as shown; press. Tack at seams, if desired.

#### OPTIONAL PURCHASED APPLIQUES

Apply purchased appliques to back pockets as desired or as shown on pattern envelope, following manufacturer's directions.



# Congrats!

You've completed your sewing adventure

---

## SHARE YOUR LOOK



Post your pattern and tag us using [#simplicitypatterns](#)  
[@simplicity\\_creative\\_group](#)  
[@simplicitymccallsuk](#)  
[@simplicitymccallsaustralia](#)  
for a chance to be featured on our social media.

Look for more PDF patterns at [simplicity.com](#) or for customers outside the U.S. and Canada visit [sewdirect.com](#) and [sewdirect.com.au](#)

Have a question or need help with your sewing project contact us:  
[Simplicity.com](#)   [Sewdirect.com](#)   [Sewdirect.com.au](#)

Simplicity ©2025 a division of IG Design Group Americas Inc. • Atlanta, GA 30342 USA [www.thedesigngroup.com](#) • All Rights Reserved. [www.simplicity.com](#) • Made in the U.S.A. Fabriqué aux États-Unis.  
To be used for individual private home use only and not for commercial or manufacturing purposes. • A usage privé seulement et non à des fins commerciales ou de production en série. • Para uso privado solamente, no se puede utilizar con propósitos de comercialización o de producción en serie.