

S3108

**Simplicity®**



A



B



C



A,B

Average

**MISSES' VEST, SKIRT AND PANTS**

**Suggested Fabrics:** Boucle, Cotton Twill, Denim, Linen Blends. **Interfacing:** Lightweight Fusible.

**Notions:** A: Five 7/8" (2.2cm) buttons. B,C: One 7" (18cm) invisible zipper.

Sizes	6	8	10	12	14	16	18	20	22	24
European	32	34	36	38	40	42	44	46	48	50

**BODY MEASUREMENTS:** Select pattern size based on body measurements

Bust	30½	31½	32½	34	36	38	40	42	44	46	Ins.
Waist	23	24	25	26½	28	30	32	34	37	39	"
Hip-9" below waist	32½	33½	34½	36	38	40	42	44	46	48	"
Back-neck to waist	15½	15¾	16	16¼	16½	16¾	17	17¼	17½	17½	"

Vest A	45**	1¾	1¾	1¾	1¾	1¾	2	2	2	2	2¾	Yds.
	60**	1¾	1¾	1¾	1¾	1¾	1¾	1¾	1¾	1¾	1¾	"

**Interfacing** 20" - 2¾ yds.

Skirt B	45**	3¾	3¾	3¾	3¾	3¾	3¾	4	4	4¾	Yds.
	60**	2¾	2¾	2¾	2¾	2¾	2¾	2¾	2¾	2¾	"

**Interfacing B,C**  
20" -¾ yd.

Pants C	45**	2¾	2¾	2¾	2¾	2¾	2¾	2¾	2¾	2¾	Yds.
	60**	1¾	1¾	1¾	1¾	1¾	2	2	2	2	"

**NOTE:** Please refer to the sewing instructions for **FINISHED GARMENT MEASUREMENTS**.

\*with nap    \*\*without nap

Moins Facile

**GILET, JUPE ET PANTALON POUR JEUNES FEMMES**

**Tissus Conseillés:** Bouclé, Twill de coton, Denim, Lin mélangés. **Entoilage:** Thermocollant léger.

**Mercerie:** A: 5 boutons de 2.2cm. B,C: 1 fermeture à glissière invisible de 18cm.

Tailles	6	8	10	12	14	16	18	20	22	24
Françaises	34	36	38	40	42	44	46	48	50	52
Européen	32	34	36	38	40	42	44	46	48	50

**MESURES DU CORPS:** Choisissez la taille du patron basée sur les mesures du corps

Poitrine	78	80	83	87	92	97	102	107	112	117	cm
Taille	58	61	64	67	71	76	81	87	94	99	"
Hanches (23cm au-dessous de la taille)	83	85	88	92	97	102	107	112	117	122	cm

**Dos du cou à la taille** 39.5 40 40.5 41.5 42 42.5 43 44 44 44.5 "

Gilet A	115cm*	1.7	1.7	1.7	1.7	1.7	1.8	1.8	1.8	1.8	m
	150cm*	1.6	1.6	1.6	1.6	1.6	1.6	1.6	1.6	1.7	

**Entoilage** 51cm - 2.0m

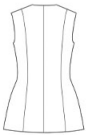
Jupe B	115cm*	2.7	2.9	2.9	3.0	3.2	3.3	3.4	3.5	3.7	m
	150cm*	2.1	2.1	2.1	2.1	2.2	2.2	2.2	2.2	2.2	"

**Entoilage B,C**  
51cm - 0.7m

Pantalon C	115cm*	2.1	2.1	2.2	2.5	2.5	2.5	2.5	2.6	2.6	m
	150cm*	1.5	1.5	1.6	1.6	1.6	1.9	1.9	2.1	2.1	"

**NOTE:** S'il vous plaît, reportez-vous au instructions de couture pour les **MESURES DU VÊTEMENTS FINI**.

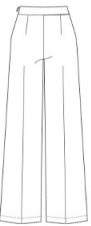
\*avec sens    \*\*sans sens



A



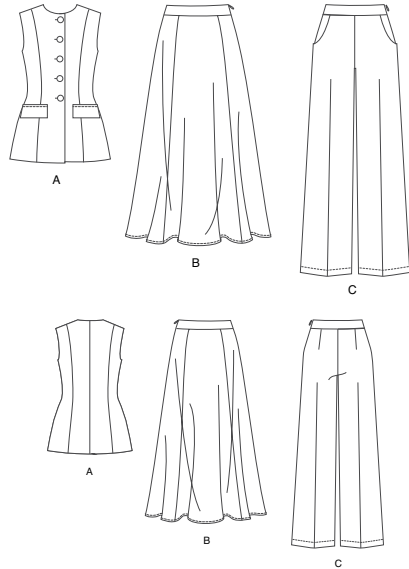
B



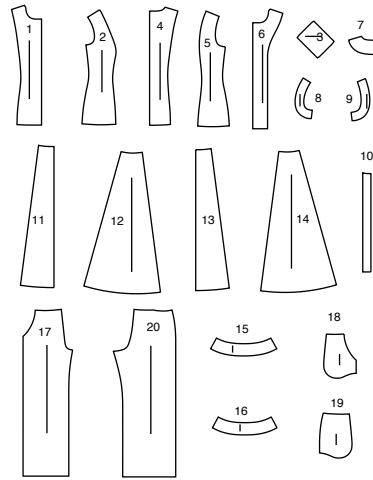
C

# Simplicity®

Thank you for purchasing this Simplicity pattern.  
We made every effort to provide you with a high quality product.



20 PIECES



- 1 FRONT - A  
2 SIDE FRONT - A  
3 FLAP - A  
4 BACK - A  
5 SIDE BACK - A  
6 FRONT FACING - A  
7 BACK FACING - A  
8 FRONT ARMHOLE FACING - A  
9 BACK ARMHOLE FACING - A  
10 GUIDE FOR BUTTONHOLES - A
- 11 FRONT - B  
12 SIDE FRONT - B  
13 BACK - B  
14 SIDE BACK - B  
15 FRONT WAISTBAND - B,C  
16 BACK WAISTBAND - B,C  
17 FRONT - C  
18 POCKET - C  
19 SIDE FRONT - C  
20 BACK - C

## General Directions

### The Pattern

- SYMBOLS**
- GRAIN LINE Place on straight grain of fabric parallel to selvage
  - PLACE SOLID LINE on fold of fabric.
  - CENTER FRONT OR BACK of garment.
  - NOTCHES
  - DOTS
  - CUTTING LINE
  - LENGTHEN OR SHORTEN LINES

SEAM ALLOWANCE: 5/8" (1.5cm) unless otherwise stated is included but not printed on MULTI-SIZE PATTERNS. Mark your size with colored felt tip pen. See chart on tissue for how to use MULTI-SIZE PATTERNS.

**ADJUST IF NEEDED**  
Make adjustments before placing pattern on fabric.

**TO LENGTHEN:**  
Cut pattern between lengthen or shorten lines. Spread pattern evenly, the amount needed and tape to paper.

**TO SHORTEN:**  
At lengthen or shorten lines, make an even pleat taking up amount needed. Tape in place.

When lengthen or shorten lines are not given, make adjustments at lower edge of pattern.

### Cutting/Marking

**BEFORE CUTTING:**  
PRESS pattern pieces with a warm dry iron. PRE-SHRINK fabric by pre-washing washables or steam-pressing non-washables.

CIRCLE your cutting layout.

PIN pattern to fabric as shown in Cutting Layouts.

• FOR DOUBLE THICKNESS: Fold fabric with RIGHT sides together.

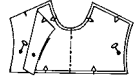
• FOR SINGLE THICKNESS: Place fabric RIGHT side up.

• FOR PILE, SHADED OR ONE WAY DESIGN FABRICS: Use "with nap" layouts

**AFTER CUTTING:**  
Transfer markings to WRONG side of fabric before removing pattern. Use pin and chalk method or dressmaker's tracing paper and wheel.

#### To Quick Mark:

- Snip edge of fabric to mark notches, ends of fold lines and center lines.
- Pin mark dots.



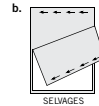
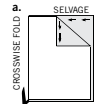
### SPECIAL CUTTING NOTES

★ If layout shows a piece extending past fold, cut out all pieces except piece that extends.

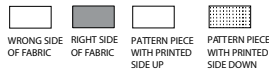
Open out fabric to single thickness. Cut extending piece on RIGHT side of fabric in position shown.

✱ Mark small arrows along both selvages indicating direction of nap or design. Fold fabric crosswise with RIGHT sides together, and cut along fold (a).

Turn one fabric layer around so arrows on both layers go in the same direction. Place RIGHT sides together (b).



## Cutting Layouts



POSITION OF PATTERN PIECES MAY VARY SLIGHTLY ACCORDING TO YOUR PATTERN SIZE

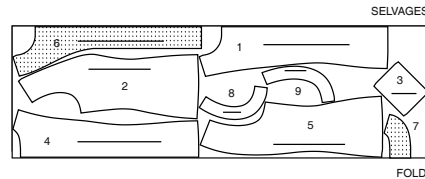
### FINISHED GARMENT MEASUREMENTS (Includes Design and Wearing Ease)

A Bust	34½	35½	36½	38	40	42	44	46	48	50	Ins.
A Waist	27½	28½	29½	31	33	35	37	39	41	43	"
B,C Waist	24	25	26	27½	29½	31½	33½	35½	37½	39½	"
B Hip	42½	43½	44½	46	48	50	52	54	56	58	"
C Hip	36	37	38	39½	41½	43½	45½	47½	49½	51½	"
Width, lower edge											
Vest A	40	41	42	43½	45½	47½	49½	51½	53½	55½	Ins.
Skirt B	97½	98½	99½	101	103	105	107	109	111	113	"
Width, each leg											
Pants C	20½	21	21½	22½	23½	24½	25½	26½	27½	28½	Ins.
Finished back length from base of neck											
Vest A	25½	25¾	26	26½	26¾	27	27½	27¾	27¾	27¾	Ins.
Finished back length from waist											
Skirt B	35	35	35	35	35	35	35	35	35	35	Ins.
Finished side length from waist											
Pants C	39½	39¾	40	40½	40¾	41	41½	41¾	41¾	41¾	Ins.

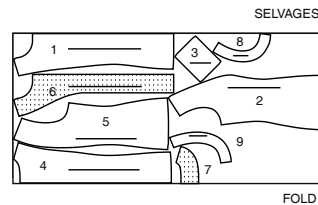
### VEST A

USE PIECES 1 2 3 4 5 6 7 8 9

45" (115CM) WITH NAP  
ALL SIZES



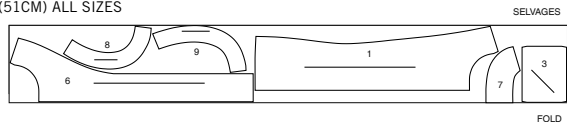
60" (150CM) WITH NAP  
ALL SIZES



### INTERFACING

USE PIECES 1 3 6 7 8 9  
CUT ONE OF PIECE 7

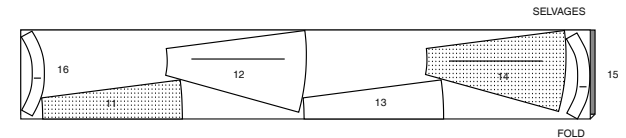
20" (51CM) ALL SIZES



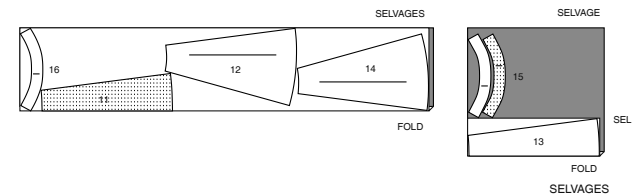
### SKIRT B

USE PIECES 11 12 13 14 15 16

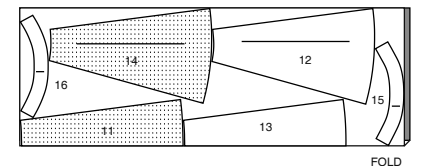
45" (115CM) WITH NAP  
SIZES 6 8 10 12 14 16 18 20 22



45" (115CM) WITH NAP  
SIZE 24



60" (150CM) WITH NAP  
ALL SIZES

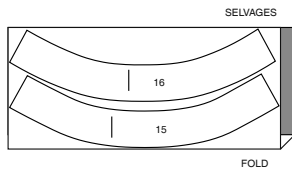


**S3108**

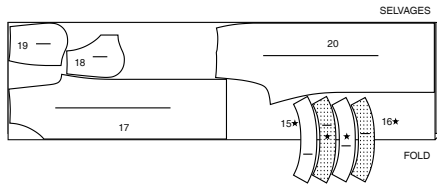
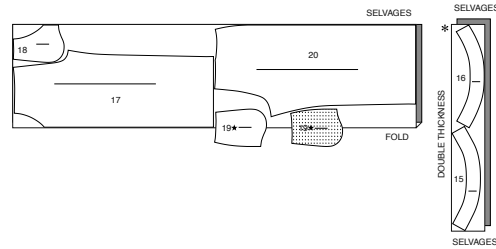
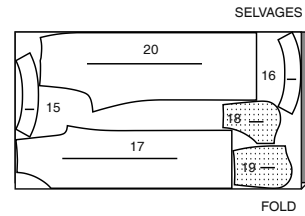
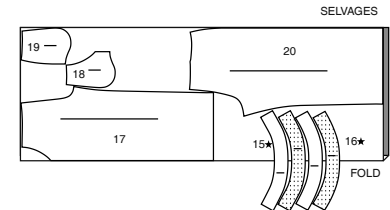
2 of 4

**INTERFACING B,C**

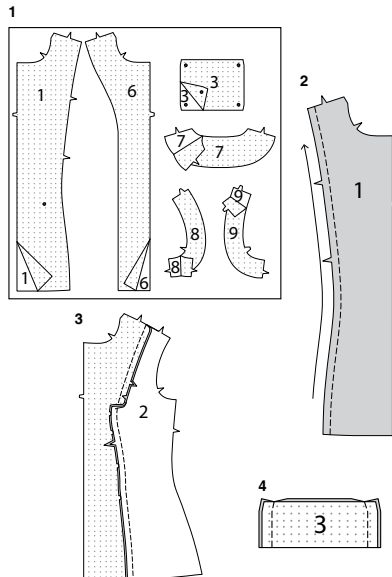
USE PIECES 15 16

20" (51CM)  
ALL SIZES**PANTS C**

USE PIECES 15 16 17 18 19 20

45" (115CM)  
WITH NAP  
SIZES 6 8 1045" (115CM)  
WITH NAP  
SIZES 12 14 16 18 20 22 2460" (150CM)  
WITH NAP  
SIZES 6 860" (150CM)  
WITH NAP  
SIZES 10 12 14 16 18 20 22 24

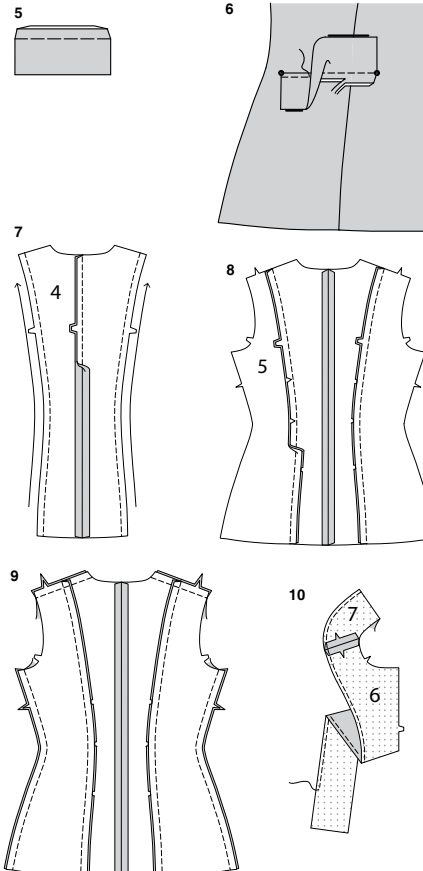
## SEWING TUTORIALS

Build your skills viewing short, easy-to-follow videos at  
simplicity.com/sewingtutorials**Sewing Directions****FABRIC KEY**Sewing methods in **BOLD TYPE** have Sewing Tutorial Video available.  
Scan QR CODE to watch videos:**FINISH** – See **Seams**: “how to finish seam allowances” video.**FLAT DART** – See **Darts**: “sewing flat dart” video.**INVISIBLE ZIPPER** – See **Zippers**: “sewing an invisible zipper” video.**NARROW HEM** – See **Hems**: “sewing narrow hems” video.**STAYSTITCH** – See **Machine Stitches**: “how to do stay stitching” video.**STITCH IN THE DITCH** – See **Machine Stitches**: “how to stitch in the ditch” video.**TACK** – See **Hand Stitching**: “how to tack” video.**TOPSTITCH** – See **Machine Stitches**: “how to topstitch” video.**TRIM SEAM** – See **Seams**: “how to trim, clip and layer seams” video.**UNDERSTITCH** – See **Machine Stitches**: “how to understitch” video.**VEST A****INTERFACING**

1. Pin **INTERFACING** to wrong side of each matching **FABRIC** section. Fuse, following manufacturer's instructions.

**FRONT AND BACK**

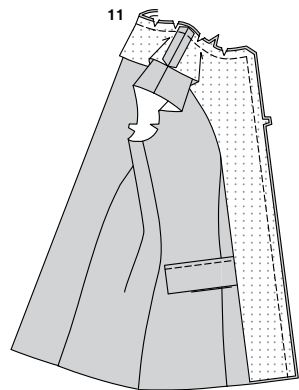
2. **STAYSTITCH** side edges of **FRONT** (1) sections, in direction of arrows.
3. With **RIGHT** sides together, pin **SIDE FRONT** (2) to side edges of front matching notches, clipping to stay-stitching as necessary. Baste. Stitch. Press seam toward front.
4. Fold **FLAP** (3) along foldline, with **RIGHT** sides together. Stitch ends.



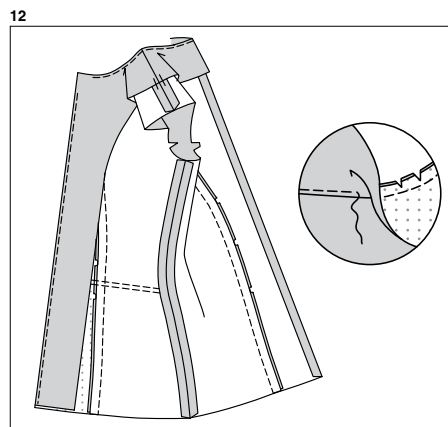
5. Turn flap **RIGHT** side out. Press. Baste raw edges together.
6. On **OUTSIDE**, pin flap to front, placing basting along flap line, matching small dots, as shown. Stitch along basting. Trim close to stitching. Turn flap down; press. **TOPSTITCH** close to upper edge.
7. With **RIGHT** sides together, stitch center back seam of **BACK** (4) sections. **STAYSTITCH** side edges of back, in direction of arrows.
8. With **RIGHT** sides together, pin **SIDE BACK** (5) sections, to each side of back matching notches. Clip to stay-stitching as necessary. Baste. Stitch. Press seams toward back.

**FRONT AND BACK FACINGS**

10. With **RIGHT** sides together, stitch **FRONT FACING** (6) sections to **BACK FACING** (7) sections at shoulders. **FINISH** unnotched edge of facing.



- 11.** With RIGHT sides together, pin facing to garment, having raw edges even, matching centers back, and shoulder seams. Stitch neck and front edges. **TRIM SEAM**; clip curves.



- 12.** **UNDERSTITCH** facing as far as possible. Turn facing to **INSIDE**. Press. To keep the facing from rolling to **OUTSIDE**, hand-**TACK** facing at shoulder seams, or **STITCH IN THE DITCH** or use a small piece of fusible web.

#### ARMHOLE FACINGS

- 13.** With RIGHT sides together, stitch FRONT ARMHOLE FACING (8) to BACK ARMHOLE FACING (9). **FINISH** unnotched edge of facing.

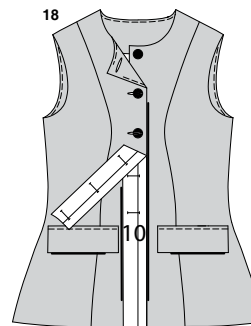
- 14.** Stitch underarm seam. With RIGHT sides together, stitch facing to armhole edge matching shoulder, and underarm seams. **TRIM SEAM**; clip curves.

- 15.** **UNDERSTITCH** facing as far as possible. Turn facing to **INSIDE**. Press. Hand-**TACK** facing at shoulder seams.

#### FINISHING

- 16.** Turn lower edge of facing to **OUTSIDE** along seam. Stitch across facing 1-1/4" (3.2cm) above raw edge. Trim, as shown.

- 17.** Turn facing to **INSIDE**, turning up hem. Baste close to fold. Trim hem to an even width. **FINISH** raw edge. Sew hem in place, easing in fullness if necessary. Press. Sew facings to hem.



- 18.** To mark buttonholes in RIGHT front place GUIDE FOR BUTTONHOLES (10) along finished edge of garment, matching centers, as shown. Transfer buttonhole markings to garment. Make buttonholes at markings. Lap RIGHT front over LEFT, matching centers. Sew buttons under buttonholes.

#### SKIRT B, PANTS C

**NOTE:** Under each sub-heading, view B will be shown unless otherwise indicated.

#### INTERFACING

- 1.** Pin **INTERFACING** to wrong side of each matching **FABRIC** section. Fuse, following manufacturer's instructions.

#### SKIRT B

- 2.** With RIGHT sides together, stitch SIDE FRONT (12) sections to each side of FRONT (11), matching notches.

- 3.** With RIGHT sides together, stitch SIDE BACK (14) sections to each side of BACK (13), matching notches.

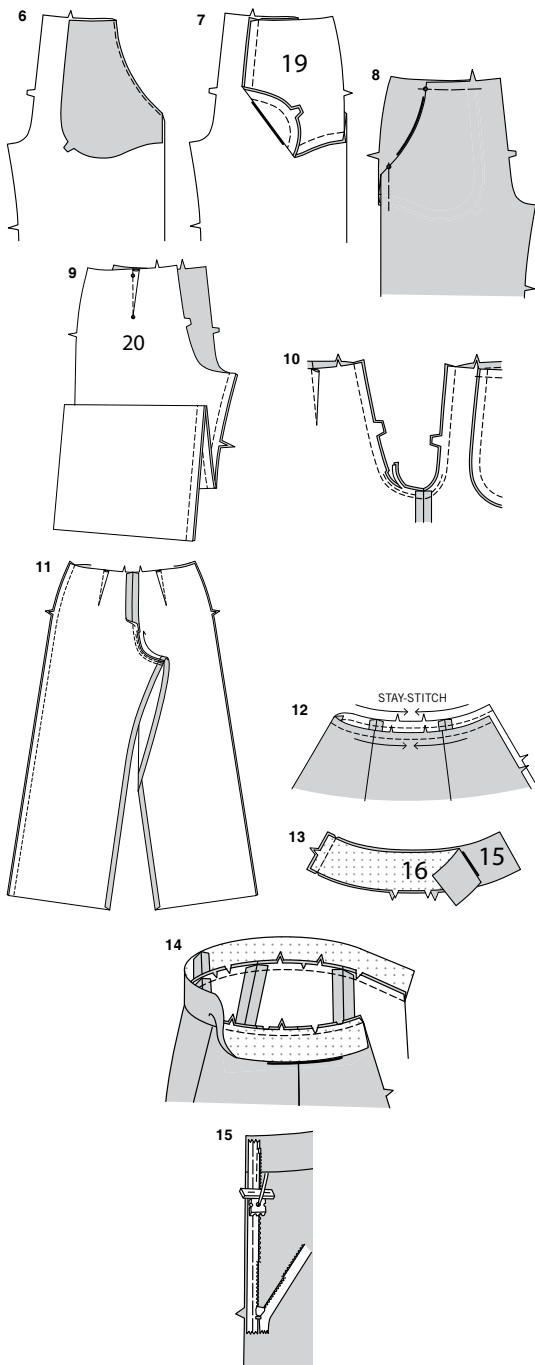
- 4.** Stitch front to back at RIGHT side seam, leaving LEFT side open.

#### PANTS C

- 5.** Stitch each POCKET (18) section to each upper side edge of FRONT (17). **TRIM SEAM**.

## S3108

4 of 4



**6. UNDERSTITCH** pocket. Turn pocket to inside. Press.

**7.** Stitch one **SIDE FRONT (19)** section to each pocket at outer edge, keeping front free.

**8.** Baste upper and side edges.

**9.** Stitch **FLAT DART** in **BACK (20)**. Press toward center.  
Stitch back and front together at inner leg.

**10.** Stitch crotch seam. Stitch again 1/4" (6mm) away in seam allowance along curve, as shown. Trim close to second stitching.

**11.** Stitch back to front at sides, leaving **LEFT** side open, as shown. Press.

#### WAISTBAND AND SIDE ZIPPER B,C

**12. STAYSTITCH** upper edge of garment, in direction of arrows.

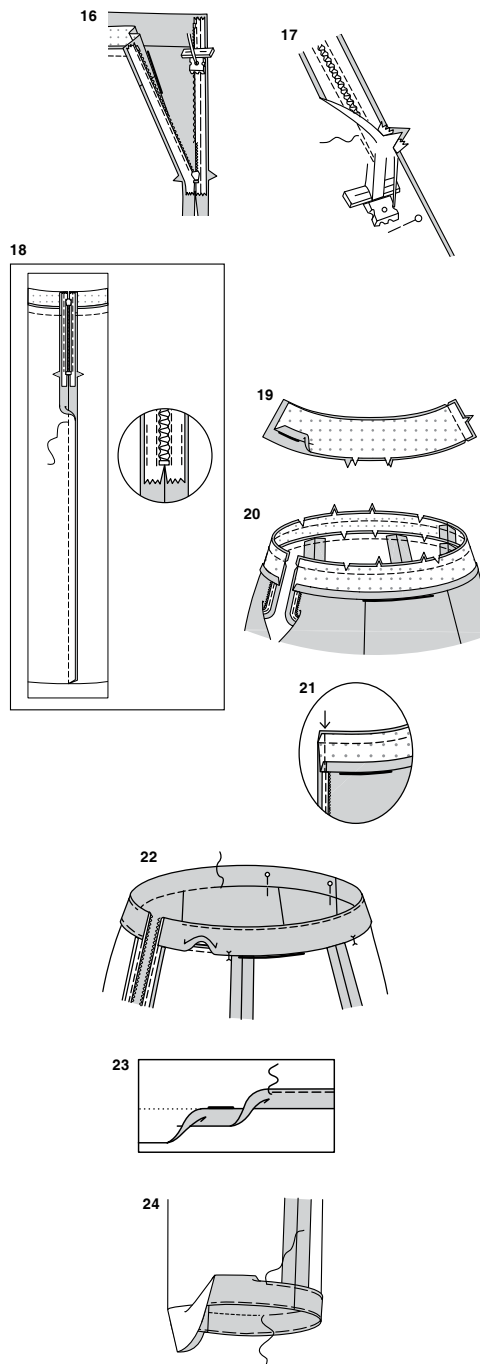
**13.** Stitch **RIGHT** side seam of interfaced **FRONT WAISTBAND (15)** and **BACK WAISTBAND (16)** sections, matching notches.

**14.** Pin waistband to upper edge of skirt/pants, matching centers and **RIGHT** side seams, clipping garment to stay-stitching where necessary. Stitch. **TRIM SEAM;** clip curves. Press seam toward waistband, pressing waistband out.

**NOTE:** The remaining waistband sections will be used as waistband facings.

**NOTE:** Use and adjustable zipper foot when stitching **INVISIBLE ZIPPER.**

**15.** Open zipper and press tape flat on **WRONG** side unrolling the coils. Do not press coils. (Use a low iron setting.) On **OUTSIDE**, pin **RIGHT** side of zipper face down on **RIGHT** side of zipper opening (**LEFT** back). Have the coil along the seam line, the tape within the seam allowance and the top stop 3/4" (2cm) below upper edge, as shown. Hand-baste along center of tape.  
Position zipper foot at top of zipper with **RIGHT** groove of foot over coil. Stitch along tape to notch. Back-stitch to reinforce.



**16.** Pin remaining half of zipper to **LEFT** side of zipper opening (**LEFT** front) in same manner. Make sure that upper and lower edges of skirt are even. Hand-baste along center of tape. Position zipper foot at the top of zipper with **LEFT** groove over the coil. Stitch along tape to notch. Back-stitch to reinforce.

**17.** Close zipper and check that it is invisible from **OUTSIDE**. Pull free ends of zipper tape away from seam allowance. Pin remaining **LEFT** seam together below zipper. Position zipper foot all the way to the **LEFT** so the needle goes down through the outer notch of the foot.

**18.** Start stitching seam 1/4" (6mm) above lowest stitch and slightly to the **LEFT**. Stitch seam for about 3" (7.5cm). Stitch remainder of seam using your regular presser foot. If you prefer, open out each seam allowance at end of zipper and stitch tape to seam allowance.

**19.** Stitch **RIGHT** side seam of waistband facing sections, matching notches. Press under 1/2" (1.3cm) on lower notched edge of waistband.

**20.** Open out **LEFT** opening edges of skirt/pants, rolling zipper teeth away from opening edge. With **RIGHT** sides together, pin facing to skirt matching centers and side seams. Stitch upper edge.  
**TRIM SEAM;** clip curves.

**21.** Pin back opening edges together.  
Using an adjustable zipper foot, stitch 1/2" (1.3cm) from back edges, keeping zipper teeth free. Trim corners. Do not trim center back edges.

**22. UNDERSTITCH** facing as far as possible.  
Turn facing and **LEFT** edges to **INSIDE**, rolling zipper teeth back in place; press.  
On **INSIDE**, pin pressed edge of facing 1/8" (1.3cm) over seam, placing pins on **OUTSIDE**. (Finished edge of facing extends below seam.)  
On **OUTSIDE**, **STITCH IN THE DITCH** or groove of seam between zipper, catching in finished edge of facing on **INSIDE**.

**TIP:** To conceal stitches in the ditch or groove of seam, try using a zipper foot, spreading the skirt and band away from seam with your fingers.

#### FINISHING

**23. VIEW B - NARROW HEM** lower edge of skirt, easing in fullness if necessary.

**24. VIEW C -** Turn up hem 1-1/2" (3.8cm). Baste close to fold. Turn in 1/4" (6mm) on raw edge, easing in fullness if necessary. Baste hem in place close to upper edge. Press.  
**TOPSTITCH** hem along upper basting, as shown.



# Congrats!

You've completed your sewing adventure

---

## SHARE YOUR LOOK



Post your pattern and tag us using [#simplicitypatterns](#)  
[@simplicity\\_creative\\_group](#)  
[@simplicitymccallsuk](#)  
[@simplicitymccallsaustralia](#)  
for a chance to be featured on our social media.

Look for more PDF patterns at [simplicity.com](#) or for customers outside the U.S. and Canada visit [sewdirect.com](#) and [sewdirect.com.au](#)

Have a question or need help with your sewing project contact us:  
[Simplicity.com](#)    [Sewdirect.com](#)    [Sewdirect.com.au](#)



Simplicity ©2025 a division of IG Design Group Americas Inc. • Atlanta, GA 30342 USA [www.thedesigngroup.com](#) • All Rights Reserved. [www.simplicity.com](#) • Made in the U.S.A. Fabriqué aux États-Unis.  
To be used for individual private home use only and not for commercial or manufacturing purposes. • A usage privé seulement et non à des fins commerciales ou de production en série. • Para uso privado solamente, no se puede utilizar con propósitos de comercialización o de producción en serie.