

S3107

Simplicity®



A



B

A,B



Average

MISSES' JACKET AND PANTS

Suggested Fabrics: Chino, Cotton Blends, Gabardine, Twill. **Interfacing:** Lightweight Fusible.

Notions: A: 2¼ yds. (2.0m) of 2" (5cm) elastic, four 1" (2.5cm) buttons. B: One 7" (18cm) zipper (adjust to fit), one ¾" (2cm) button.

Sizes	8	10	12	14	16	18	20	22	24	26
European	34	36	38	40	42	44	46	48	50	52

BODY MEASUREMENTS: Select pattern size based on body measurements

Bust	31½	32½	34	36	38	40	42	44	46	48	Ins.
Waist	24	25	26½	28	30	32	34	37	39	41½	"
Hip-9" below waist	33½	34½	36	38	40	42	44	46	48	50	"
Back-neck to waist	15¾	16	16¼	16½	16¾	17	17¼	17½	17¾	17¾	"

Jacket A	45**	3½	3½	3½	3½	3%	3%	3%	3%	3%	4	Yds.
	60**	2½	2½	2%	2%	2%	2%	2%	3	3	3	"

Interfacing 20" - 1½ yds.

Pants B	45**	2%	2%	2%	2%	2%	2%	2%	2%	2%	2½	Yds.
	60**	1%	1%	1%	2¼	2¼	2¼	2¼	2¼	2¼	2%	"

Interfacing 20" - ¾ yd.

FINISHED GARMENT MEASUREMENTS (Includes Design and Wearing Ease)

A Bust	45¼	46¼	47¾	49¾	51¾	53¾	55¾	57¾	59¾	61¾	Ins.
B Waist	25	26	27½	29½	31½	33½	35½	37½	39½	41½	"
B Hip	44¼	45¼	46¾	48¾	50¾	52¾	54¾	56¾	58¾	60¾	"

Width, each leg

Pants B	13¾	14¼	14¾	15¼	15¾	16¼	16¾	17¼	17¾	18¼	Ins.
---------	-----	-----	-----	-----	-----	-----	-----	-----	-----	-----	------

Finished back length from base of neck

Jacket A	21¾	22	22¼	22½	22¾	23	23¼	23½	23¾	24	Ins.
----------	-----	----	-----	-----	-----	----	-----	-----	-----	----	------

Finished side length from waist

Pants B	39¼	39½	39¾	40	40¼	40½	40¾	41	41¼	41½	Ins.
---------	-----	-----	-----	----	-----	-----	-----	----	-----	-----	------

*with nap **without nap

Moins Facile

VESTE ET PANTALON POUR JEUNES FEMMES

Tissus Conseillés: Chino, Cotonnades, Gabardine, Twill. **Entoilage:** Thermocollant léger.

Mercièrie: A: 2.0m d'élastique de 5cm, 4 boutons de 2.5cm. B: 1 fermeture à glissière de 18cm (adaptez pour ajuster), 1 bouton de 2cm.

Tailles	8	10	12	14	16	18	20	22	24	26
Françaises	36	38	40	42	44	46	48	50	52	54
Européen	34	36	38	40	42	44	46	48	50	52

MESURES DU CORPS: Choisissez la taille du patron basée sur les mesures du corps

Poitrine	80	83	87	92	97	102	107	112	117	122	cm
Taille	61	64	67	71	76	81	87	94	99	106	"
Hanches (23cm au-dessous de la taille)	85	88	92	97	102	107	112	117	122	127	cm

Dos du cou à la taille 40 40.5 41.5 42 42.5 43 44 44 44.5 44.5 "

Veste A	115cm*	3.2	3.2	3.2	3.2	3.3	3.5	3.5	3.5	3.7	m
	150cm*	2.3	2.3	2.3	2.4	2.4	2.4	2.5	2.6	2.7	"

Entoilage 51cm - 1.7m

Pantalon B	115cm*	2.2	2.2	2.2	2.2	2.2	2.4	2.5	2.5	2.6	2.6	m
	150cm*	1.5	1.5	1.7	1.9	2.1	2.1	2.1	2.1	2.1	2.2	"

Entoilage 51cm - 0.7m

MESURES DES VÊTEMENTS FINI (Motif et aisance de port compris)

A Poitrine	115	117	121	126	131	137	142	147	152	157	cm
B Taille	64	66	70	75	80	85	90	95	100	105	"
B Hanches	112	115	119	124	129	134	139	144	149	154	"

Largeur, chaque jambe

Pantalon B	35	36	37	39	40	41	43	44	45	46	cm
------------	----	----	----	----	----	----	----	----	----	----	----

Longueur finie - dos, votre nuque à l'ourlet

Veste A	55	56	57	57	58	58	59	60	60	61	cm
---------	----	----	----	----	----	----	----	----	----	----	----

Longueur finie - côté, taille à l'ourlet

Pantalon B	100	100	101	102	102	103	104	104	105	105	cm
------------	-----	-----	-----	-----	-----	-----	-----	-----	-----	-----	----

*avec sens **sans sens



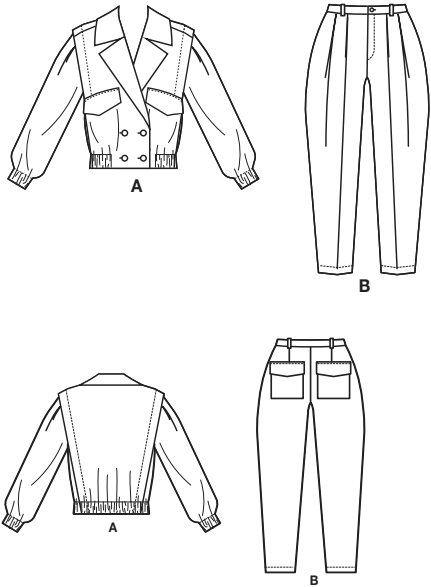
A



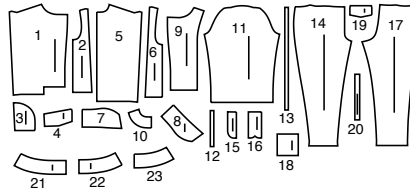
B

Simplicity®

Thank you for purchasing this Simplicity pattern. We made every effort to provide you with a high quality product.



23 PIECES



- 1 Front-A
- 2 Side Front-A
- 3 Pocket-A
- 4 Flap-A
- 5 Back-A
- 6 Side Back-A
- 7 Upper Collar-A
- 8 Under Collar-A
- 9 Front Facing-A
- 10 Back Facing-A
- 11 Sleeve-A
- 12 Elastic Guide for Sleeve-A
- 13 Elastic Guide for Lower Edge-A
- 14 Front-B
- 15 Left Fly Facing-B
- 16 Right Fly-B
- 17 Back-B
- 18 Pocket-B
- 19 Flap-B
- 20 Carrier-B
- 21 Right Front Waistband-B
- 22 Left Front Waistband-B
- 23 Back Waistband-B

General Directions

The Pattern

- SYMBOLS**
- GRAIN LINE Place on straight grain of fabric parallel to selvage
 - PLACE SOLID LINE on fold of fabric.
 - CENTER FRONT OR BACK of garment.
 - NOTCHES
 - DOTS
 - CUTTING LINE
 - LENGTHEN OR SHORTEN LINES
- SEAM ALLOWANCE: 5/8" (1.5cm) unless otherwise stated is included but not printed on MULTI-SIZE PATTERNS. Mark your size with colored felt tip pen. See chart on tissue for how to use MULTI-SIZE PATTERNS.

- ADJUST IF NEEDED**
- Make adjustments before placing pattern on fabric.
- TO LENGTHEN:** Cut pattern between lengthen or shorten lines. Spread pattern evenly, the amount needed and tape to paper.
- TO SHORTEN:** At lengthen or shorten lines, make an even pleat taking up amount needed. Tape in place.
- When lengthen or shorten lines are not given, make adjustments at lower edge of pattern.

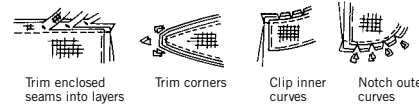
Cutting/Marking

- BEFORE CUTTING:**
- PRESS pattern pieces with a warm dry iron. PRE-SHRINK fabric by pre-washing washables or steam-pressing non-washables.
- CIRCLE your cutting layout.
- PIN pattern to fabric as shown in Cutting Layouts.
- FOR DOUBLE THICKNESS: Fold fabric with RIGHT sides together.
 - FOR SINGLE THICKNESS: Place fabric RIGHT side up.
 - FOR PILE, SHADED OR ONE WAY DESIGN FABRICS: Use "with nap" layouts

- AFTER CUTTING:**
- Transfer markings to WRONG side of fabric before removing pattern. Use pin and chalk method or dressmaker's tracing paper and wheel.
- To Quick Mark:**
- Snip edge of fabric to mark notches, ends of fold lines and center lines.
 - Pin mark dots.

Sewing

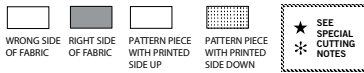
- SEW garment following **Sewing Directions**.
- PIN or machine-baste seams matching notches.
- STITCH 5/8" (1.5 cm) seams unless otherwise stated.
- PRESS seams open unless otherwise indicated clipping when necessary so seams will lie flat.
- TRIM seams to reduce bulk, as shown below.



SPECIAL CUTTING NOTES

- ★ If layout shows a piece extending past fold, cut out all pieces except piece that extends. Open out fabric to single thickness. Cut extending piece on RIGHT side of fabric in position shown.
- ✳ Mark small arrows along both selvages indicating direction of nap or design. Fold fabric crosswise with RIGHT sides together, and cut along fold (a). Turn one fabric layer around so arrows on both layers go in the same direction. Place RIGHT sides together (b).

Cutting Layouts

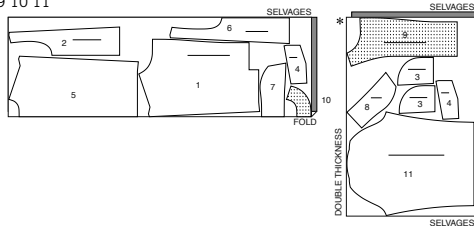


POSITION OF PATTERN PIECES MAY VARY SLIGHTLY ACCORDING TO YOUR PATTERN SIZE

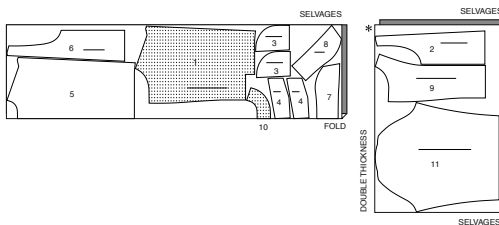
JACKET A

USE PIECES 1 2 3 4 5 6 7 8 9 10 11

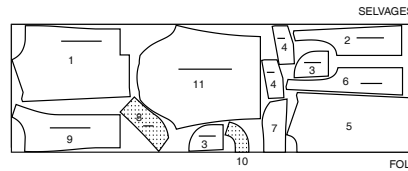
45" (115CM) WITH NAP
SIZES 8 10 12 14 16



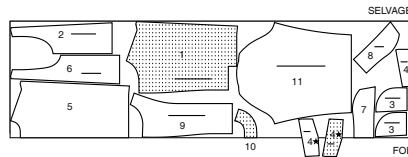
45" (115CM) WITH NAP
SIZES 18 20 22 24 26



60" (150CM) WITH NAP
SIZES 8 10 12 14 16 18 20



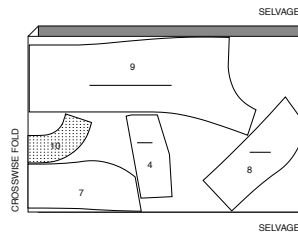
60" (150CM) WITH NAP
SIZES 22 24 26



INTERFACING A

USE PIECES 4 7 8 9 10

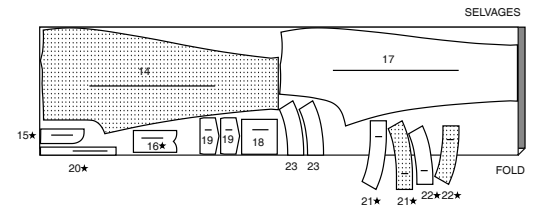
20" (51CM) ALL SIZES



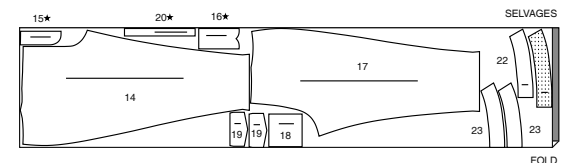
PANTS B

USE PIECES 14 15 16 17 18 19 20 21 22 23

45" (115CM) WITH NAP
SIZES 8 10 12 14 16



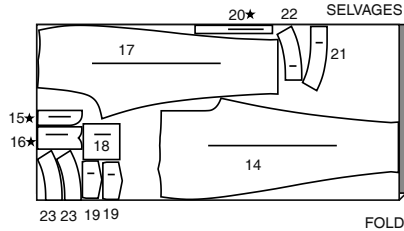
45" (115CM) WITH NAP
SIZES 18 20 22 24 26



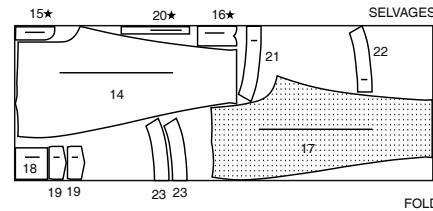
S3107

2 of 4

60" (150CM)
WITH NAP
SIZES 8 10 12



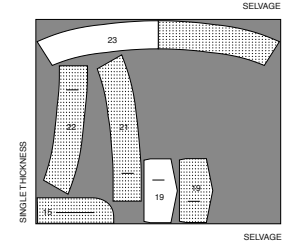
60" (150CM)
WITH NAP
SIZES 14 16 18 20 22 24 26



INTERFACING B

USE PIECES 15 19 21 22 23

20" (51CM)
ALL SIZES



Sewing Directions

FABRIC KEY: RIGHT SIDE, WRONG SIDE, INTERFACING, LINING, LINING

Read **General Directions** on page 1 before you begin.

Sewing methods in **BOLD TYPE** have Sewing Tutorial Video available. Scan QR CODE to watch videos:

DART - See **Darts**: "sewing a flat dart" video.

EDGESTITCH - See **Machine Stitches**: "how to edgestitch" video.

FINISH - See **Seams**: "how to finish seam allowances" video.

SLIPSTITCH - See **Hand Stitching**: "how to slip stitch" video.

STAYSTITCH - See **Machine Stitches**: "how to do stay-stitching" video.

TOPSTITCH - See **Machine Stitches**: "how to topstitch" video.

TRIM - See **Seams**: "how to trim, clip and layer seams" video.

UNDERSTITCH - See **Machine Stitches**: "how to understitch" video.

PATTERN PIECES WILL BE IDENTIFIED BY NUMBERS THE FIRST TIME THEY ARE USED.

STITCH 5/8" (1.5CM) SEAMS WITH RIGHT SIDES TOGETHER UNLESS OTHERWISE STATED.

JACKET A

1. Fuse **INTERFACING** to **WRONG** side of each matching **FABRIC** section following manufacturer's instructions.

2. **STAYSTITCH** neck edge of **FRONT** (1) and **BACK** (5) in direction of arrows. Stitch fronts to back at shoulders. Press seam open, clipping inward corner.

3. Pin **POCKET** (3) to front and **SIDE FRONT** (2), matching notches and large dots. Stitch using a 3/8" (1cm) seam. Press seam toward pockets.

4. Stitch side front to **SIDE BACK** (6) at shoulders. Press seam open.

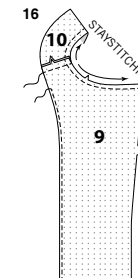
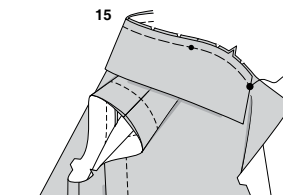
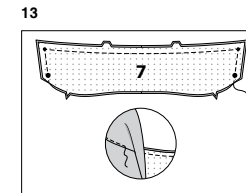
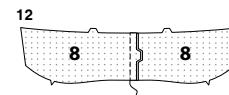
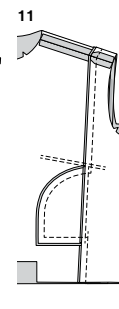
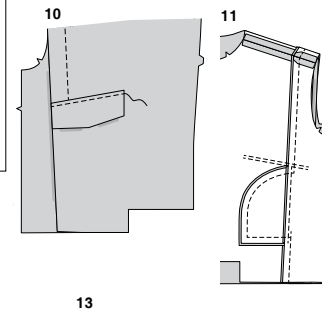
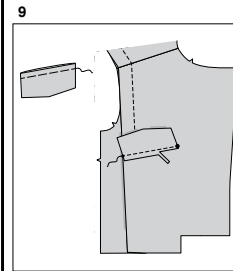
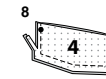
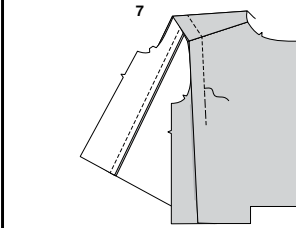
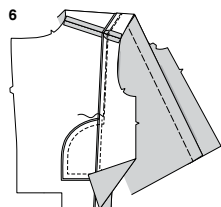
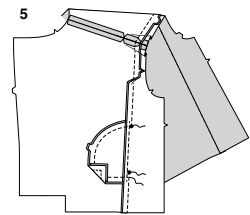
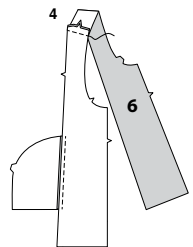
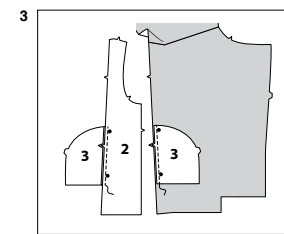
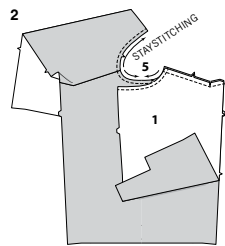
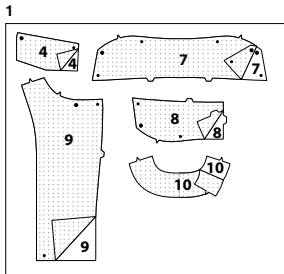
5. Pin front and back to side front and side back, **RIGHT** sides together, matching shoulder seams, notches and large dots. Baste from lower edge of back to upper large dot on front. Stitch from lower large dot on front to lower edge of front. Stitch pocket edges together to side front seams. Turn seam allowance and pockets toward front and back.

6. On **INSIDE**, fold front and back along foldline, **WRONG** sides together, bringing stitching line to side front and side back seamlines. Baste.

SEWING TUTORIALS



Build your skills viewing short, easy-to-follow videos at simplicity.com/sewingtutorials



7. On **OUTSIDE**, stitch along stitching line to flap line on front through all layers.

8. For each flap, pin an interfaced **FLAP** (4) to one without interfacing, **RIGHT** sides together matching large and small dots. Stitch sides and lower edges. **TRIM**.

9. Turn flap **RIGHT** sides out. Press. Baste raw edges together. Pin flap to front placing seamline along flap line and seam allowances below line, matching large and small dots. Stitch along seamline between dots. Trim seam close to stitching.

10. Press flap down. **TOPSTITCH** upper edge of flap.

11. Stitch front to back at sides.

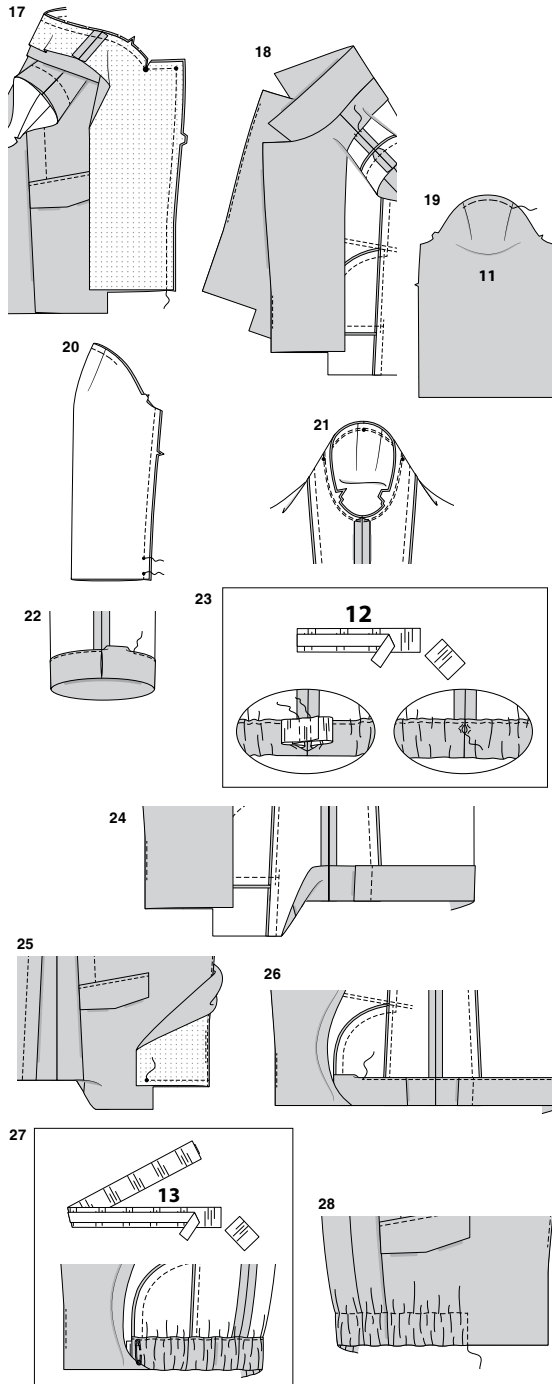
12. Stitch center back seam in **UNDER COLLAR** (8).

13. Pin **UPPER COLLAR** (7) to under collar, **RIGHT** sides together, matching notches, center backs, and large and small dots. **UNDERSTITCH** long edge of under collar as far as possible.

14. Turn collar **RIGHT** side out. Press. Baste raw edges together.

15. On **OUTSIDE**, with under collar facing down, pin collar to neck edge of jacket, matching notches, center backs, and large dots, placing small dots at shoulder seams, clipping neck edge of jacket to staystitching, as needed. Baste.

16. Stitch **FRONT FACING** (9) to **BACK FACING** (10) at shoulders. **STAYSTITCH** neck edge of facing in direction of arrows. **FINISH** inner edge of facing.



17. With RIGHT sides together, pin facing to jacket, over collar, matching centers, notches, shoulder seams, and large dots, clipping neck edge of facing, as needed. Baste. Stitch front opening and neck edges. Clip to large dots. **TRIM.**

18. UNDERSTITCH jacket front ending 1" (2.5cm) above buttonhole markings. **UNDERSTITCH** front facing below buttonhole markings. Turn facing to inside, turning collar out. Press. Tack at shoulder seams.

19. To make pleats in SLEEVE (11), fold on solid lines, WRONG sides together. Bring solid line to broken line. Baste across upper edge.

20. Stitch seam in sleeve, leaving open between small dots, backstitching at small dots to reinforce seam.

21. With right sides together, pin sleeve into armhole with center small dot at shoulder seam, matching underarm seams, notches and remaining small dots. Baste, keeping finished edge of flange free. Stitch. Stitch again 1/8" (3mm) away in seam allowance. Trim close to stitching. Turn seam toward jacket.

22. To form casing, press lower edge of sleeve to INSIDE along foldline turning in 1/4" (6mm) on raw edge. Stitch close to inner pressed edge.

23. For each sleeve, cut a piece of 2" (5cm) wide elastic using ELASTIC GUIDE FOR SLEEVE (12). Insert elastic through opening in casing. Overlap ends and hold with safety pin. Try on jacket and adjust to fit. Stitch ends of elastic together securely. **SLIPSTITCH** opening closed.

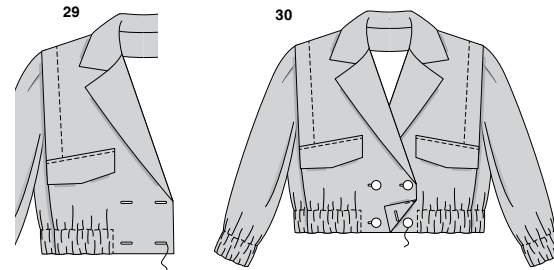
24. Turn up lower edge of jacket along foldline for casing. Press.

25. Turn lower edge of facing to OUTSIDE. Stitch across facing along seamline to small dot. **TRIM.**

26. Turn facing to INSIDE; press. To form casing, press under 1/4" (6mm) on raw edge. Stitch upper edge of casing in place.

27. Cut a piece of 2" (5cm) wide elastic using ELASTIC GUIDE FOR LOWER EDGE (13). Lift facing and insert elastic through casing having ends even with opening edges of casing. Pin ends with safety pins and try on jacket. Adjust, if necessary.

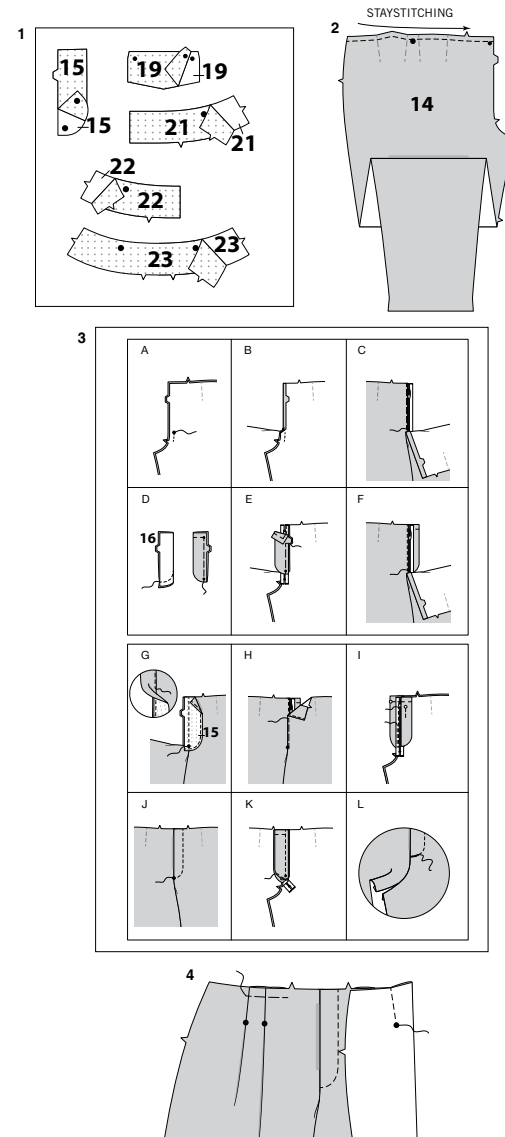
28. Pin facing in place. On OUTSIDE, stitch across ends of elastic through all thicknesses.



29. Make buttonholes in right front at markings.

30. Lap right front over left front matching centers. Mark position for buttons using buttonholes as a guide. Sew buttons to markings.

PANTS B



1. Fuse INTERFACING to WRONG side of each matching FABRIC section following manufacturer's instructions.

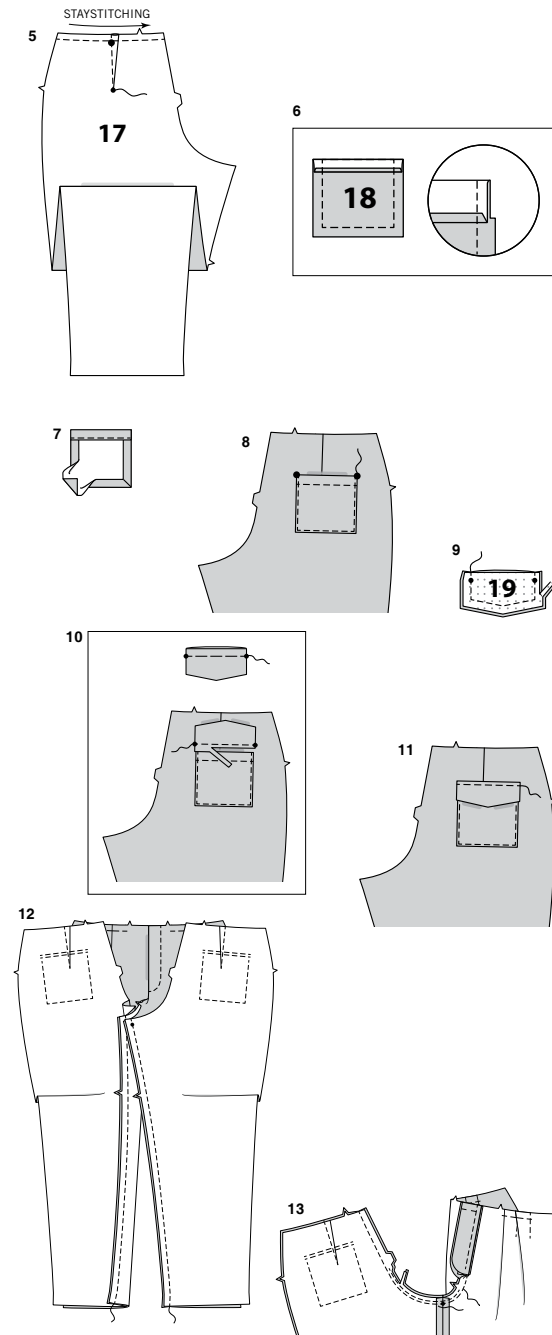
2. STAYSTITCH upper edge of FRONT (14) sections in direction of arrows. Construct fly front as follows:

3. A- Stitch front sections together at center front between large dot and notch.
B- Turn in right front opening edge along foldline; press.
C- Place closed zipper (face up) under right front opening edge, having pressed edge close to zipper teeth and lower zipper stop at small dot. Using a zipper foot, baste close to pressed edge.
D- With right sides together, fold RIGHT FLY (16) in half lengthwise. Stitch lower edge. **TRIM.** Turn. Press. Baste raw edges together.
E- On inside, pin right fly to right front opening edge (over zipper), matching notches and small dots, having raw edges even. Baste along previous basting for zipper.
F- On outside, using a zipper foot, stitch close to pressed edge of front through all layers.
G- FINISH outer edge of LEFT FLY FACING (15). Pin fly facing to left front opening edge, matching notches, and large dots. Stitch, ending at large dot. **TRIM. UNDERSTITCH** fly facing. Turn facing to inside.
H- Lap left front over right, matching centers. Baste close to edge through all thicknesses.
I- Pin right fly out of the way. Open out fly facing. Pin remaining zipper tape to fly facing, keeping left front free. Using a zipper foot, stitch in place close to zipper teeth and along center of zipper tape.
J- Turn facing down. On outside, stitch left front along stitching lines, keeping right fly free.
K- Turn right fly back in place. On inside, hand tack fly and facing together at lower edge, as shown. Trim away excess zipper tape even with lower edge of fly, if needed.
L- If desired, on outside, machine-stitch a bar tack across lower end of fly through all thicknesses.

4. To make pleats in front, on INSIDE, bring broken lines of small dots together. Stitch pleats, ending stitching at small dots. Press pleats toward center front. Baste across upper edge.

S3107

4 of 4



5. **STAYSTITCH** upper edge of **BACK (17)** in direction of arrows. Stitch **DART** in back. Press dart toward center.

6. Press under 1/4" (6mm) on upper edge of **POCKET (18)**. Turn upper edge to **OUTSIDE** along foldline, forming a facing. Stitch along seamline on raw edges. Trim seam allowance in the facing area to 1/4" (6mm).

7. Turn corners **RIGHT** side out, turning facing to **WRONG** side. Press, pressing under raw edges along stitching and folding in corners diagonally. Stitch facing close to inner edge.

8. On **OUTSIDE**, pin pocket to back matching large dots. **EDGESTITCH** sides and lower edges of pocket.

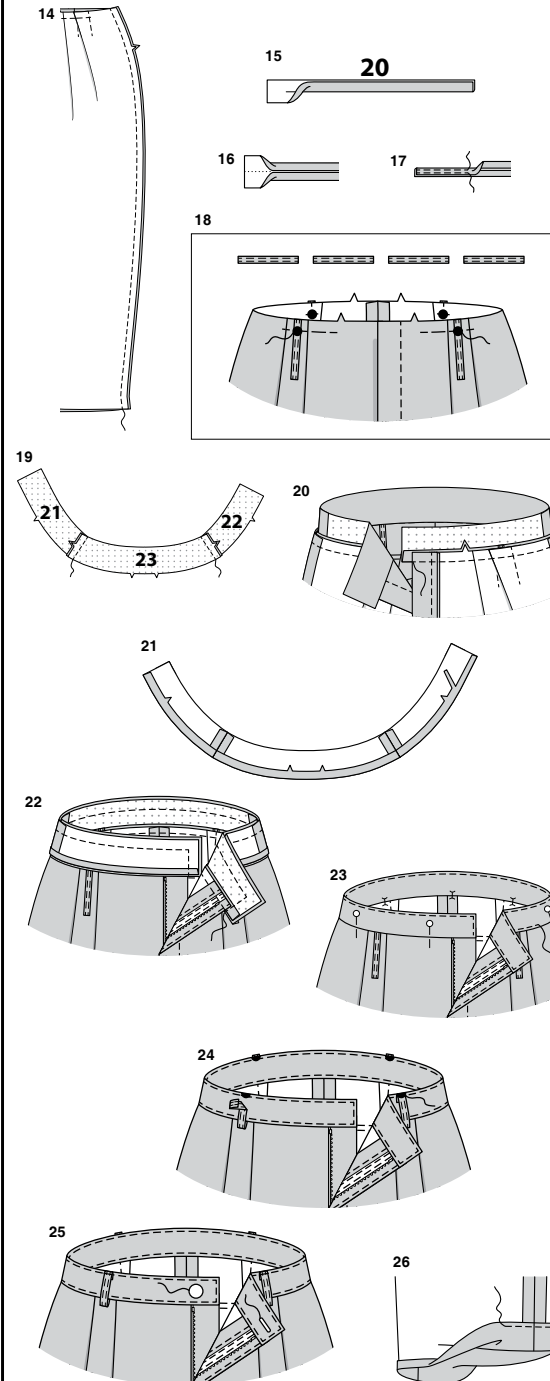
9. For each flap, pin an interfaced **FLAP (19)** to one without interfacing, matching small dots. Stitch sides and lower edges. **TRIM**.

10. Turn **RIGHT** side out. Press. Baste raw edges together. Pin flap to back, **RIGHT** sides together, matching small dots, placing seamline along flap line with seam allowances below the line. Stitch between small dots. Trim close to stitching.

11. Turn flap down over seam allowances. **TOPSTITCH** flap.

12. Pin back to front at inner leg seams matching small dots and notches. Stitch seam, stretching back to fit.

13. Stitch remainder of crotch seam to notch in front. Stitch again 1/4" (6mm) away in seam allowance along curve, as shown. Trim close to second stitching.



14. Stitch front to back at sides.

15. Fold **CARRIER (20)** in half lengthwise with **WRONG** sides together. Press, setting in a crease.

16. Open out long edges of carrier and turn them to **WRONG** side so that they meet at the crease. Press.

17. Fold carrier in half lengthwise, bringing pressed edges together. Stitch close to both long edges.

18. Cut four carriers each 3-1/4" (8cm) long. On **OUTSIDE**, pin carriers to upper edge of pants centering over large dots, having raw edges even. Baste.

19. Stitch interfaced **RIGHT FRONT WAISTBAND (21)** and **LEFT FRONT WAISTBAND (22)** to **BACK WAISTBAND (23)** at sides. Uninterfaced waistband sections will be used as **FACING**.

20. With **RIGHT** sides together, pin waistband to upper edge of pants, matching centers, seams and notches, clipping pants where necessary. Baste. Stitch. **TRIM**. Press seam toward waistband. (Ends of waistband extend 5/8" (1.5cm).

21. Stitch front and back waistband **FACING** sections together at sides. Press under 1/2" (1.3cm) on lower edge of facing, easing in fullness where necessary. Trim pressed seam allowance to 3/8" (1cm).

22. With **RIGHT** sides together, pin facing to waistband matching centers and seams, having raw edges even. Stitch upper edge and ends. **TRIM**.

23. Turn facing to **INSIDE**. Press. Pin pressed edge of waistband facing over seam, placing pins on the **OUTSIDE**. **EDGESTITCH** entire waistband, catching in pressed edge of facing on **INSIDE**.

24. Press under 1/4" (6mm) on ends of carriers. Press up free end of carriers and center over large dots. **EDGESTITCH** in place.

25. Make buttonhole in left front waistband at marking. Sew button to right front waistband at marking.

26. Press up hem on lower edge of pants. Press under 1/4" (6mm) on raw edge. Stitch close to inner pressed edge.



Congrats!

You've completed your sewing adventure

SHARE YOUR LOOK



Post your pattern and tag us using [#simplicitypatterns](#)
[@simplicity_creative_group](#)
[@simplicitymccallsuk](#)
[@simplicitymccallsaustralia](#)
for a chance to be featured on our social media.

Look for more PDF patterns at [simplicity.com](#) or for customers outside the U.S. and Canada visit [sewdirect.com](#) and [sewdirect.com.au](#)

Have a question or need help with your sewing project contact us:
[Simplicity.com](#) [Sewdirect.com](#) [Sewdirect.com.au](#)

