

S3106

Simplicity®



MISSES' SHORTS AND PANTS WITH TIE BELT Average

Suggested Fabrics: Cotton Blends, Linen, Poplin, Twill. **Interfacing:** Lightweight Fusible.

Notions: A,B,C: One 7" (18cm) zipper (cut to fit), ¾" (2cm) button(s): one for A,C, five for B.

Sizes	6	8	10	12	14	16	18	20	22	24
European	32	34	36	38	40	42	44	46	48	50

BODY MEASUREMENTS: Select pattern size based on body measurements

Bust	30½	31½	32½	34	36	38	40	42	44	46	Ins.
Waist	23	24	25	26½	28	30	32	34	37	39	"
Hip-9" below waist	32½	33½	34½	36	38	40	42	44	46	48	"
Back-neck to waist	15½	15¾	16	16¼	16½	16¾	17	17¼	17½	17¾	"

Shorts and Tie Belt A

45**	1¼	1¼	1¼	2	2	2¼	2¼	2¼	2¼	2¼	Yds.
60**	1½	1½	1½	1½	1½	1½	1½	1½	1½	1½	"
20*	¾ yd.										

Pants and Tie Belt B

45**	2¼	2¼	2¼	3	3¼	3¼	3¼	3¼	4	4	Yds.
60**	2½	2½	2½	2½	2½	2½	2½	2½	2½	2½	"
20*	1¾ yds.										

Pants C

45**	3	3	3	3¼	3¼	3¼	4	4½	4½	4½	Yds.
60**	2¾	2¾	2¾	2¾	2¾	2¾	2¾	3	3	3	"
20*	¾ yd.										

Interfacing

45**	3	3	3	3¼	3¼	3¼	4	4½	4½	4½	Yds.
60**	2¾	2¾	2¾	2¾	2¾	2¾	2¾	3	3	3	"
20*	¾ yd.										

FINISHED GARMENT MEASUREMENTS (Includes Design and Wearing Ease)

A,B,C Hip	41½	42½	43½	45	47	49	51	53	55	57	Ins.
Width, each leg											
Shorts A	30	30¾	31½	32½	33¾	35	36¼	37½	38¾	40	Ins.
Pants B	32½	33¾	34	35	36¼	37½	38¾	40	41¼	42½	"
Pants C	35	35¾	36½	37½	38¾	40	41¼	42½	43¾	45	"
Finished side length from waist											
Shorts A (sits 1" below waist)	15¾	16	16¼	16½	16¾	17	17¼	17½	17¾	18	Ins.
Pants B (sits 1" below waist)	27½	27¾	28	28¼	28½	28¾	29	29¼	29½	29¾	Ins.
Pants C (sits 1" below waist)	41½	41¾	42	42¼	42½	42¾	43	43¼	43½	43¾	Ins.

*with nap **without nap

SHORT ET PANTALONS AVEC CEINTURE A NOUER POUR JEUNES FEMMES Moins Facile

Tissus Conseillés: Cotonnades, Toile de lin, Popeline, Twill. **Entoilage:** Thermocollant léger.

Mercerie: A,B,C: 1 fermeture à glissière de 18cm (coupée pour ajuster), boutons de 2cm: 1 pour A,C 5 pour B.

Tailles	6	8	10	12	14	16	18	20	22	24
Françaises	34	36	38	40	42	44	46	48	50	52
Européen	32	34	36	38	40	42	44	46	48	50

MESURES DU CORPS: Choisissez la taille du patron basée sur les mesures du corps

Poitrine	78	80	83	87	92	97	102	107	112	117	cm
Taille	58	61	64	67	71	76	81	87	94	99	"
Hanches (23cm au-dessous de la taille)	83	85	88	92	97	102	107	112	117	122	cm
Dos du cou à la taille	39.5	40	40.5	41.5	42	42.5	43	44	44	44.5	"

Short et ceinture à nouer A

115cm*	1.6	1.6	1.6	1.8	1.8	1.9	1.9	1.9	1.9	2.1	m
150cm*	1.4	1.4	1.5	1.5	1.5	1.5	1.5	1.5	1.5	1.5	"
Entoilage	51cm 0.7m										

Pantalon et ceinture à nouer B

115cm*	2.6	2.6	2.6	2.7	2.7	2.9	2.9	3.5	3.7	3.7	m
150cm*	2.3	2.3	2.3	2.3	2.3	2.4	2.4	2.4	2.4	2.4	"
Entoilage	51cm 1.3m										

Pantalon C

115cm*	2.7	2.7	2.7	2.7	2.9	3.3	4.0	4.1	4.1	4.2	m
150cm*	2.4	2.4	2.4	2.4	2.4	2.4	2.4	2.7	2.7	2.7	"
Entoilage	51cm 0.7m										

MESURES DES VÊTEMENTS FINI (Motif et aisance de port compris)

A,B,C Hanches	105	108	110	114	119	124	130	135	140	145	cm
Largeur, chaque jambe											
Short A	76	78	80	83	86	89	92	95	98	102	cm
Pantalon B	83	84	86	89	92	95	98	102	105	108	"
Pantalon C	89	91	93	95	98	102	105	108	111	114	"

Longueur finie – côté, taille à l'ourlet

Short A (repose 2.5cm dessous de la taille)	40	41	41	42	43	43	44	44	45	46	cm
Pantalon B (repose 2.5cm dessous de la taille)	70	70	71	72	72	73	74	74	75	76	cm
Pantalon C (repose 2.5cm dessous de la taille)	105	106	107	107	108	109	109	110	110	111	cm

Interfacing

45**	3	3	3	3¼	3¼	3¼	4	4½	4½	4½	Yds.
60**	2¾	2¾	2¾	2¾	2¾	2¾	2¾	3	3	3	"
20*	¾ yd.										

Entoilage

45**	3	3	3	3¼	3¼	3¼	4	4½	4½	4½	Yds.
60**	2¾	2¾	2¾	2¾	2¾	2¾	2¾	3	3	3	"
20*	¾ yd.										

FINISHED GARMENT MEASUREMENTS (Includes Design and Wearing Ease)

A,B,C Hip	41½	42½	43½	45	47	49	51	53	55	57	Ins.
Width, each leg											
Short A	30	30¾	31½	32½	33¾	35	36¼	37½	38¾	40	Ins.
Pantalon B	32½	33¾	34	35	36¼	37½	38¾	40	41¼	42½	"
Pantalon C	35	35¾	36½	37½	38¾	40	41¼	42½	43¾	45	"
Finished side length from waist											
Short A (repose 2.5cm dessous de la taille)	40	41	41	42	43	43	44	44	45	46	cm
Pantalon B (repose 2.5cm dessous de la taille)	70	70	71	72	72	73	74	74	75	76	cm
Pantalon C (repose 2.5cm dessous de la taille)	105	106	107	107	108	109	109	110	110	111	cm

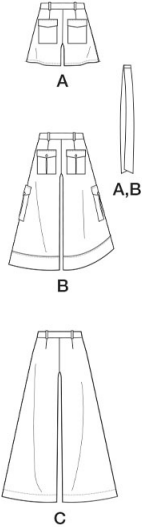
Interfacing

45**	3	3	3	3¼	3¼	3¼	4	4½	4½	4½	Yds.
60**	2¾	2¾	2¾	2¾	2¾	2¾	2¾	3	3	3	"
20*	¾ yd.										

Entoilage

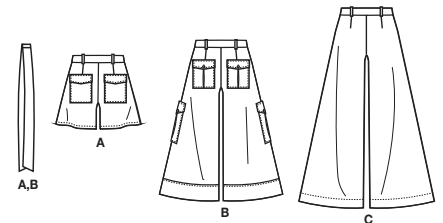
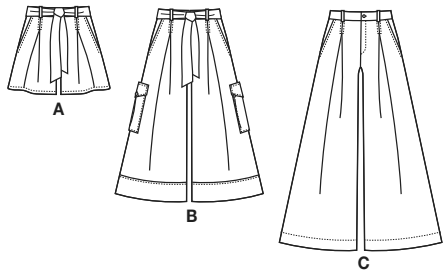
45**	3	3	3	3¼	3¼	3¼	4	4½	4½	4½	Yds.
60**	2¾	2¾	2¾	2¾	2¾	2¾	2¾	3	3	3	"
20*	¾ yd.										

*avec sens **sans sens

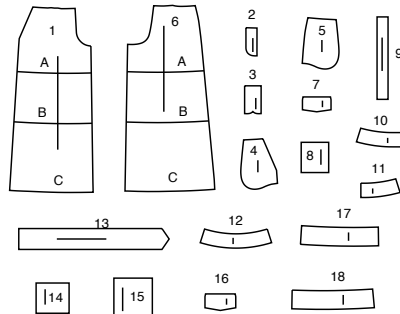


Simplicity

Thank you for purchasing this Simplicity pattern. We made every effort to provide you with a high quality product.



18 PIECES



- 1 FRONT - A,B,C
- 2 LEFT FLY FACING - A,B,C
- 3 RIGHT FLY - A,B,C
- 4 POCKET FACING - A,B,C
- 5 SIDE FRONT AND POCKET - A,B,C
- 6 BACK - A,B,C
- 7 FLAP (BACK) - A,B
- 8 BACK POCKET - A
- 9 CARRIER - A,B,C
- 10 RIGHT FRONT WAISTBAND - A,B,C
- 11 LEFT FRONT WAISTBAND - A,B,C
- 12 BACK WAISTBAND - A,B,C
- 13 TIE BELT - A,B
- 14 BACK POCKET - B
- 15 LOWER POCKET - B
- 16 LOWER FLAP - B
- 17 FRONT BAND - B
- 18 BACK BAND - B

General Directions

The Pattern

- SYMBOLS**
- GRAIN LINE Place on straight grain of fabric parallel to selvage
 - PLACE SOLID LINE on fold of fabric.
 - CENTER FRONT OR BACK of garment.
 - NOTCHES
 - DOTS
 - CUTTING LINE
 - LENGTHEN OR SHORTEN LINES
- SEAM ALLOWANCE: 5/8" (1.5cm) unless otherwise stated is included but not printed on MULTI-SIZE PATTERNS. Mark your size with colored felt tip pen. See chart on tissue for how to use MULTI-SIZE PATTERNS.

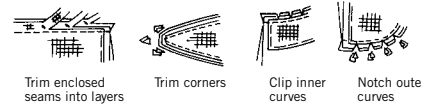
- ADJUST IF NEEDED**
- Make adjustments before placing pattern on fabric.
- TO LENGTHEN:** Cut pattern between lengthen or shorten lines. Spread pattern evenly, the amount needed and tape to paper.
- TO SHORTEN:** At lengthen or shorten lines, make an even pleat taking up amount needed. Tape in place.
- When lengthen or shorten lines are not given, make adjustments at lower edge of pattern.

Cutting/Marking

- BEFORE CUTTING:**
- PRESS pattern pieces with a warm dry iron. PRE-SHRINK fabric by pre-washing washables or steam-pressing non-washables.
 - CIRCLE your cutting layout.
 - PIN pattern to fabric as shown in Cutting Layouts.
 - FOR DOUBLE THICKNESS: Fold fabric with RIGHT sides together.
 - FOR SINGLE THICKNESS: Place fabric RIGHT side up.
 - FOR PILE, SHADED OR ONE WAY DESIGN FABRICS: Use "with nap" layouts
- AFTER CUTTING:**
- Transfer markings to WRONG side of fabric before removing pattern. Use pin and chalk method or dressmaker's tracing paper and wheel.
 - To Quick Mark:**
 - Snip edge of fabric to mark notches, ends of fold lines and center lines.
 - Pin mark dots.

Sewing

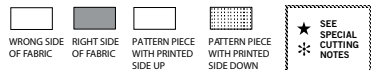
- SEW garment following Sewing Directions.
- PIN or machine-baste seams matching notches.
- STITCH 5/8" (1.5 cm) seams unless otherwise stated.
- PRESS seams open unless otherwise indicated clipping when necessary so seams will lie flat.
- TRIM seams to reduce bulk, as shown below.



SPECIAL CUTTING NOTES

- ★ If layout shows a piece extending past fold, cut out all pieces except piece that extends.
- ✱ Mark small arrows along both selvages indicating direction of nap or design. Fold fabric crosswise with RIGHT sides together, and cut along fold (a).
- Turn one fabric layer around so arrows on both layers go in the same direction. Place RIGHT sides together (b).

Cutting Layouts



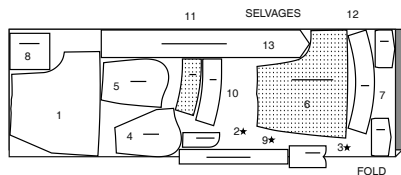
POSITION OF PATTERN PIECES MAY VARY SLIGHTLY ACCORDING TO YOUR PATTERN SIZE

SHORTS AND TIE BELT A

USE PIECES 1 2 3 4 5 6 7 8 9 10 11 12 13

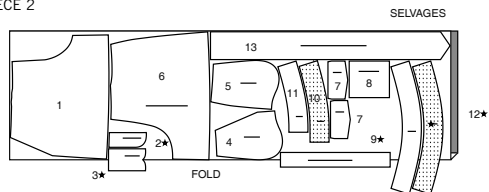
45" (115CM) WITH NAP SIZES 6 8 10 12 14

CUT ONE OF PIECE 2

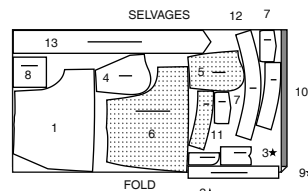


45" (115CM) WITH NAP SIZES 16 18 20 22 24

CUT ONE OF PIECE 2



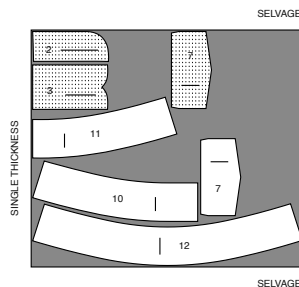
60" (150CM) WITH NAP ALL SIZES CUT ONE OF PIECES 2 3



INTERFACING A

USE PIECES 2 3 7 10 11 12

20" (51CM) ALL SIZES

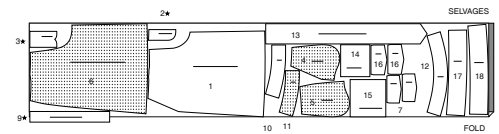


PANTS AND TIE BELT B

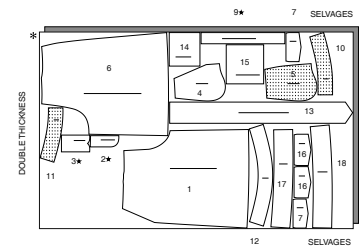
USE PIECES 1 2 3 4 5 6 7 9 10 11 12 13 14 15 16 17 18

45" (115CM) WITH NAP SIZES 6 8 10 12 14 16 18

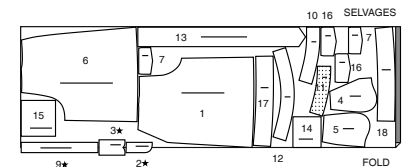
CUT ONE OF PIECES 2 3



45" (115CM) WITH NAP SIZES 20 22 24 CUT ONE OF PIECES 2 3 9



60" (150CM) WITH NAP ALL SIZES



CUTTING LAYOUTS CONTINUED ON PAGE 2

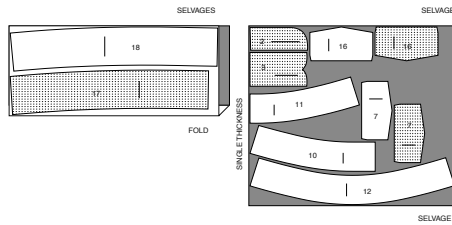
S3106

2 of 4

INTERFACING B

USE PIECES 2 3 7 10 11 12 16 17 18

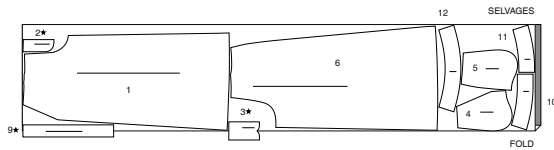
20" (51CM)
ALL SIZES



PANTS C

USE PIECES 1 2 3 4 5 6 9 10 11 12

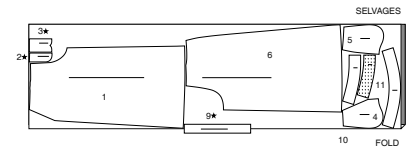
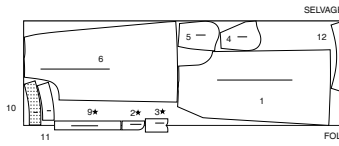
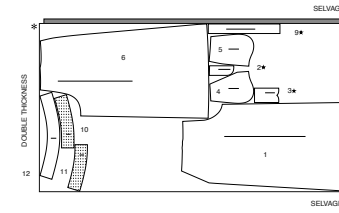
45" (115CM)
WITH NAP
SIZES 6 8 10 12 14
CUT ONE OF PIECE 2



45" (115CM)
WITH NAP
SIZES 16 18 20 22 24
CUT ONE OF PIECES 2 3 9

60" (150CM)
WITH NAP
SIZES 6 8 10 12 14 16 18

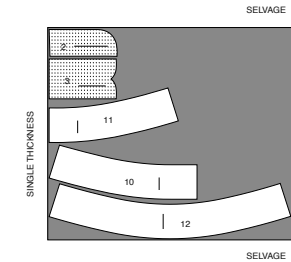
60" (150CM)
WITH NAP
SIZES 20 22 24
CUT ONE OF PIECES 2 3



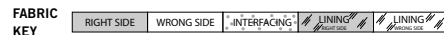
INTERFACING C

USE PIECES 2 3 10 11 12

20" (51CM)
ALL SIZES



Sewing Directions



Sewing methods in **BOLD TYPE** have Sewing Tutorial Video available. Scan **QR CODE** to watch videos:

BELT LOOP/CARRIER – See **Loops and Straps**: “how to sew belt loops” video.

EDGESTITCH – See **Machine Stitches**: “how to sew an edgestitch” video.

FINISH – See **Seams**: “how to finish seam allowances” video.

FLAT DART – See **Darts**: “sewing flat dart” video.

FLY FRONT ZIPPER – See **Zippers**: “sewing a fly front zipper” video.

NARROW HEM – See **Hems**: “sewing narrow hems” video.

SLIPSTITCH – See **Hand Stitching**: “how to slip stitch” video.

STAYSTITCH – See **Machine Stitches**: “how to do stay stitching” video.

STITCH IN THE DITCH – See **Machine Stitches**: “how to stitch in the ditch” video.

TACK – See **Hand Stitching**: “how to tack” video.

TOPSTITCH – See **Machine Stitches**: “how to topstitch” video.

TRIM SEAM – See **Seams**: “how to trim, clip and layer seams” video.

UNDERSTITCH – See **Machine Stitches**: “how to understitch” video.

PATTERN PIECES WILL BE IDENTIFIED BY NUMBERS THE FIRST TIME THEY ARE USED.

STITCH 5/8" (1.5CM) SEAMS, WITH RIGHT SIDES TOGETHER UNLESS OTHERWISE STATED.

SEWING TUTORIALS



Build your skills viewing short, easy-to-follow videos at simplicity.com/sewingtutorials

SHORTS A, PANTS B, C

NOTE: Under each sub-heading, first view will be shown unless otherwise indicated.

INTERFACING

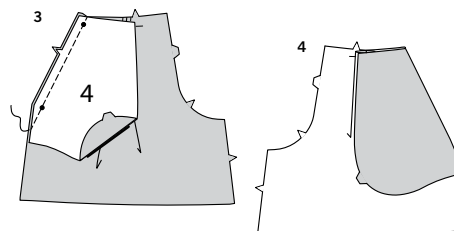
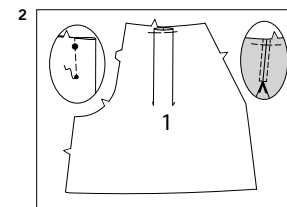
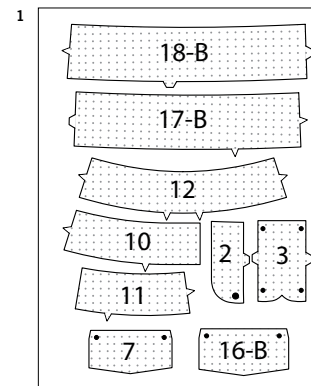
1. Pin INTERFACING to wrong side of each matching FABRIC section. Fuse, following manufacturer's instructions. Trim corners of interfacing, as shown.

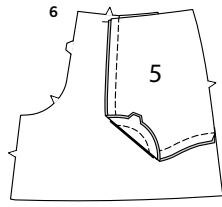
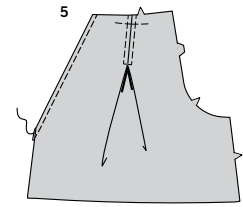
FRONT AND BACK

2. To make pleats in FRONT (1) sections, on INSIDE, bring broken lines together matching small and large dots. Stitch along broken lines, ending at small dot. Press pleat flat bringing stitching to center. Baste across raw edge. On OUTSIDE, **TOPSTITCH** around finished pleat, squaring stitching at end of pleat.

3. Stitch each POCKET FACING (4) section to upper side edge of front. **TRIM SEAM.**

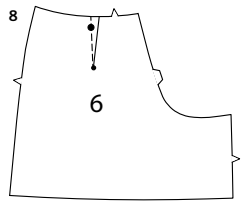
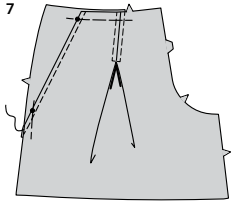
4. Turn pocket to INSIDE. Press.





5. **TOPSTITCH** upper side edge of front.

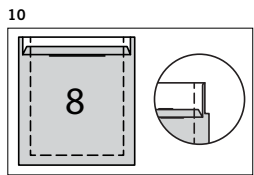
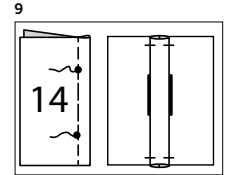
6. Stitch one **SIDE FRONT AND POCKET (5)** section to each pocket at outer edge, keeping front free.



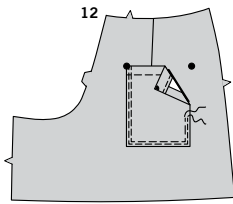
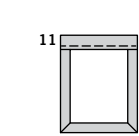
7. Baste upper and side edges.

8. Stitch **FLAT DARTS** in **BACK (6)** sections. Press toward center.

9. **VIEW B**- To make pleats in **BACK POCKET (14)** sections, on **INSIDE**, bring broken lines together matching small dots. Stitch along broken lines, ending at small dots. Baste between small dots. Press pleat flat bringing stitching to center. Baste across raw edges. Remove basting, between small dots.



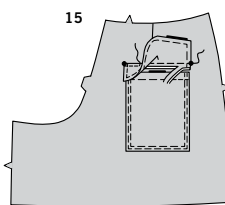
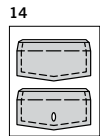
10. **VIEW A, B**- Press under 1/4" (6mm) on upper edge of **BACK POCKET (8)** OR (14) sections. Turn upper edge to **OUTSIDE** along fold line, forming facing. Stitch along seam line on raw edges. Trim seam allowance in the facing area to 1/4" (6mm).



11. Turn corners **RIGHT** side out, turning facing to the **WRONG** side; press, pressing under raw edges along stitching. Stitch facing close to inner edge.

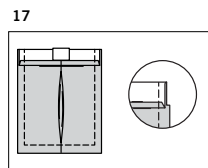
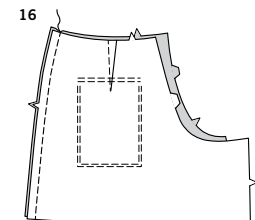
12. On **OUTSIDE**, pin pocket to back matching large dots. **EDGESTITCH** and **TOPSTITCH** pockets in place.

13. For each flap with **RIGHT** sides together, stitch one interfaced **FLAP (7)** sections to one uninterfaced flap, leaving edge with small dots open. Trim seam and corners.



14. Turn flap; press. Machine-baste 5/8" (1.5cm) from raw edge. On **OUTSIDE**, **TOPSTITCH** close to finished edge. **VIEW B**- Make button holes in flaps at markings.

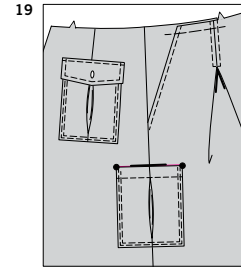
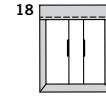
15. On **OUTSIDE**, pin flap to back, placing basting along flap line, matching small dots, as shown. Stitch along basting. Trim close to stitching. Turn flap down; press. **TOPSTITCH** close to upper edge.



SIDE SEAMS AND POCKETS

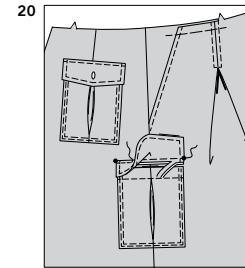
16. With **RIGHT** sides together, stitch front to back at side seams.

17. **VIEW B**- Make pleats in **LOWER POCKET (15)** sections, in same manner as back pocket. See step 9. Press under 1/4" (6mm) on upper edge of pocket. Turn upper edge to **OUTSIDE** along fold line, forming facing. Stitch along seam line on raw edges. Trim seam allowance in the facing area to 1/4" (6mm).



18. Turn corners **RIGHT** side out, turning facing to the **WRONG** side; press, pressing under raw edges along stitching. Stitch facing close to inner edge.

19. On **OUTSIDE**, pin pocket to side seams matching large dots. **EDGESTITCH** and **TOPSTITCH** pockets in place.



20. Construct **LOWER FLAP (16)** in same manner as for back flap. See steps 13 and 14. On **OUTSIDE**, pin flap to side, placing basting along flap line, matching small dots, as shown. Stitch along basting. Trim close to stitching. Turn flap down; press. **TOPSTITCH** close to upper edge.

FLY FRONT AND SEAMS

NOTE: for more assistance, see Zippers: "sewing a fly front zipper" video.

21. **A**-Stitch front sections together at center front between large dot and notch.

B-Turn in right front opening edge along foldline; press.

C-Place closed zipper (face up) under right front opening edge, having pressed edge close to zipper teeth and zipper stop at small dot. Using a zipper foot, baste close to pressed edge.

D-With right sides together, fold **RIGHT FLY (3)** along foldline. Stitch lower edge. Trim. Turn. Press. Baste raw edges.

E-On **INSIDE**, pin right fly to right front opening edge (over zipper), matching notches and small dots, having raw edges even. Baste along previous basting for zipper.

F-On **OUTSIDE**, using a zipper foot, stitch close to pressed edge of front through all layers.

G-FINISH outer edge of **LEFT FLY FACING (2)**. Pin fly facing to left front opening edge, matching notches and large dots. Stitch, ending at large dot. Trim. **UNDERSTITCH** fly facing. Turn facing to **INSIDE**.

H-Lap **LEFT** front over **RIGHT**, matching centers. Baste close to edge through all thicknesses.

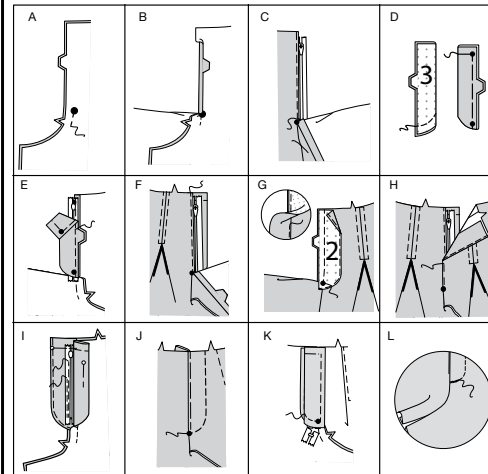
I-Pin **RIGHT** fly out of the way. Open out fly facing. Pin remaining zipper tape to fly facing, keeping **LEFT** front free. Using a zipper foot, stitch in place close to zipper teeth and along center of zipper tape.

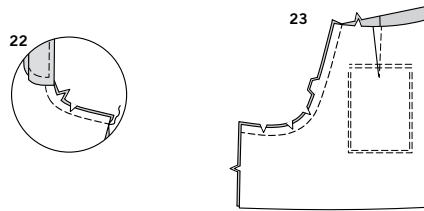
J-Turn facing down. On **OUTSIDE**, stitch **LEFT** front along stitching line, keeping **RIGHT** fly free.

K-Turn **RIGHT** fly back in place. On **INSIDE**, hand **TACK** fly and facing together at lower edge, as shown. Trim away excess zipper tape even with lower edge of fly, if needed.

L-If desired, on outside, machine-stitch a bar tack across lower end of fly through all thicknesses.

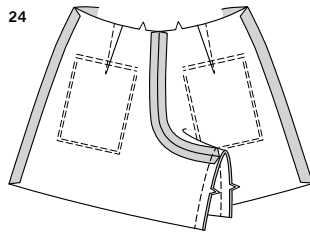
21





22. Stitch remainder of front crotch seam below notch. Clip seam allowance along curve.

23. Stitch back sections together at center back seam. Clip seam allowance along curve.



24. With **RIGHT** sides together, pin inner leg seams together, matching notches and crotch seams. Stitch entire inner leg seam.



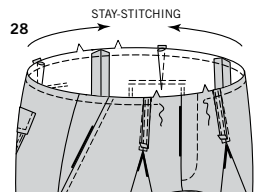
WAISTBAND

25. Fold **CARRIER** (9) in half, lengthwise with **WRONG** sides together. Press, setting in a crease.

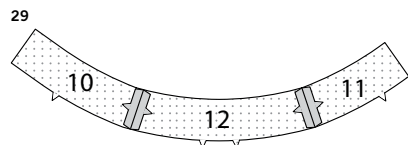
26. Open out long edges of carrier and turn them to **WRONG** side so that they meet at the crease. Press.



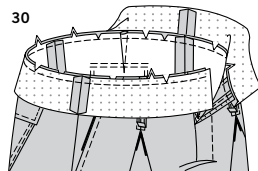
27. Fold carrier in half lengthwise, bringing pressed edges together. **EDGE****STITCH** both long edges.
TIP: For more assistance, see Loops and Straps: "how to sew belt loops" video



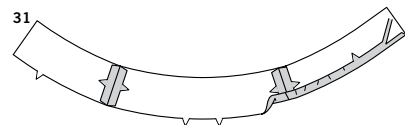
28. Cut four carriers each measuring 3-3/4" (9.53 cm) long. Press under 1/4" (6mm) on one end of carrier. on **OUTSIDE**, pin carriers to upper edge of shorts/pants, centering raw edges over large dots. Baste. **STAY****STITCH** upper edge of shorts/pants between notches, in direction of arrows.



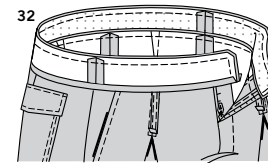
29. With **RIGHT** sides together, stitch interfaced **RIGHT FRONT WAISTBAND** (10) and **LEFT FRONT WAISTBAND** (11) to **BACK WAISTBAND** (12) at sides.



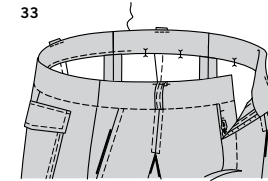
30. With **RIGHT** sides together, pin waistband to upper edge of shorts/pants, matching centers and side seams, clipping to stay-stitching where necessary. Baste. Stitch. **TRIM SEAM**. Clip curves. Press seam toward waistband, pressing waistband out.
NOTE: Waistband will extend 5/8" (1.5cm) beyond opening edges.



31. Stitch waistband facing sections in same manner as waistband.
Turn 1/2" (1.3cm) on lower edge of waistband facing, easing in fullness if necessary. Press. Trim pressed seam allowance to 1/4" (6mm) if you prefer.

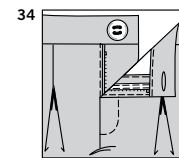


32. Pin facing to waistband. Stitch front opening and upper edges, as shown. **TRIM SEAM**.

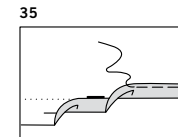


33. Turn facing to **INSIDE**, pinning pressed edge of facing over seam, placing pins on **OUTSIDE**. On **OUTSIDE**, **STITCH IN THE DITCH** or "groove" of seam, catching in pressed edge of facing on **INSIDE**. Press up ends of carriers. **EDGE****STITCH** upper edge in place.

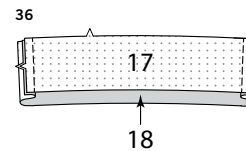
FINISHING



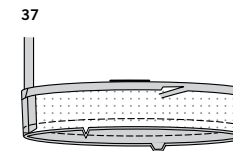
34. Make buttonhole in **LEFT** waistband at marking. Sew button to **RIGHT** waistband at marking.



35. **VIEW A-** Make a 5/8" (1.5cm) **NARROW HEM** on lower edge of shorts.



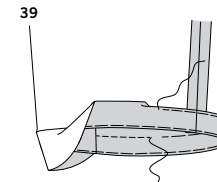
36. **VIEW B-** With **RIGHT** sides together, stitch **FRONT BAND** (17) and **BACK BAND** (18) together at double and single notched edges.



37. Press under seam allowance on unnotched edge of band. Trim to 3/8" (1cm). On **INSIDE**, pin **RIGHT** side of band to **WRONG** side of leg, matching notches and seams. Stitch. **TRIM SEAM**.



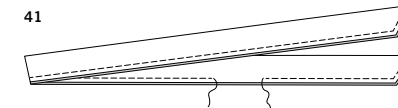
38. Turn band to **OUTSIDE** along seam, press. Stitch band in place close to pressed edge.



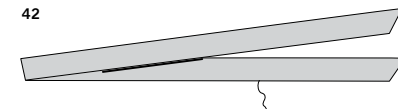
39. **VIEW C-** Turn up hem. Baste close to fold. Turn in 1/4" (6mm) on raw edge, easing in fullness if necessary. Baste hem in place close to upper edge. Press. **TOP****STITCH** hem along upper basting, as shown.



40. **VIEW A, B-** With **RIGHT** sides together, stitch **TIE BELT** (13) sections together at notched edge, in a 3/8" (1cm) seam.



41. Fold belt in half lengthwise, with **RIGHT** sides together. Stitch outer edge in a 3/8" (1cm) seam, leaving an opening large enough for turning.



42. Turn belt **RIGHT** side out. Press. **SLIP****STITCH** opening closed. Wear belt as shown on front of envelope.



Congrats!

You've completed your sewing adventure

SHARE YOUR LOOK



Post your pattern and tag us using [#simplicitypatterns](#)
[@simplicity_creative_group](#)
[@simplicitymccallsuk](#)
[@simplicitymccallsaustralia](#)
for a chance to be featured on our social media.

Look for more PDF patterns at [simplicity.com](#) or for customers outside the U.S. and Canada visit [sewdirect.com](#) and [sewdirect.com.au](#)

Have a question or need help with your sewing project contact us:
[Simplicity.com](#) [Sewdirect.com](#) [Sewdirect.com.au](#)

Simplicity
by design