

S3101

Simplicity®



A



A,B



A,C



Detachable



A,B



Average

**MISSES' SHIRT WITH DETACHABLE 3D FLOWERS**

**Suggested Fabrics:** Chambray, Cotton Shirting, Crepe, Linen, Poplin, Taffeta.

**Interfacing A,B:** Lightweight Fusible.

**Notions:** A: Eleven ½" (1.3cm) buttons. B: Six 1" (2.5cm) bar pins. C: Three 1" (2.5cm) bar pins.

Sizes	8	10	12	14	16	18	20	22	24	26
European	34	36	38	40	42	44	46	48	50	52

**BODY MEASUREMENTS: Select pattern size based on body measurements**

Bust	31½	32½	34	36	38	40	42	44	46	48	Ins.
Waist	24	25	26½	28	30	32	34	37	39	41½	"
Hip-9" below waist	33½	34½	36	38	40	42	44	46	48	50	"
Back-neck to waist	15¾	16	16¼	16½	16¾	17	17¼	17½	17¾	17¾	"

Shirt A	45**	2%	2%	2%	2%	2%	¾	2¾	3	3	Yds.
	60**	2	2	2	2%	2¼	2¼	2¼	2%	2%	"

**Interfacing** 20" - 1 yd.

**Flowers B** 45,60\*\* - ¾ yd.

**Interfacing** 20" - 2¾ yds.

**Flowers C** 45,60\*\* - ¾ yd.

**FINISHED GARMENT MEASUREMENTS (Includes Design and Wearing Ease)**

A Bust	45	46	47½	49½	51½	53½	55½	57½	59½	61½	Ins.
Finished back length from base of neck											
Shirt A	27¾	28	28¼	28½	28¾	29	29¼	29½	29¾	30	Ins.

\*with nap \*\*without nap

Moins Facile

**CHEMISE AVEC FLEURS 3D DÉTACHABLES POUR JEUNES FEMMES**

**Tissus Conseillés:** Chambray, Shirting de coton, Crêpe, Toile de lin, Popeline, Taffetas.

**Entoilage A,B:** Thermocollant léger.

**Mercerie:** A: 11 boutons de 1.3cm. B: 6 goupilles de barre de 2.5cm. C: 3 goupilles de barre de 2.5cm.

Tailles	8	10	12	14	16	18	20	22	24	26
Françaises	36	38	40	42	44	46	48	50	52	54
Europèen	34	36	38	40	42	44	46	48	50	52

**MESURES DU CORPS: Choisissez la taille du patron basée sur les mesures du corps**

Poitrine	80	83	87	92	97	102	107	112	117	122	cm
Taille	61	64	67	71	76	81	87	94	99	106	"
Hanches (23cm au-dessous de la taille)	85	88	92	97	102	107	112	117	122	127	cm
Dos du cou à la taille	40	40.5	41.5	42	42.5	43	44	44	44.5	44.5	"

Chemise A	115cm*	2.3	2.4	2.4	2.4	2.4	2.5	2.5	2.7	2.7	2.7	m
	150cm*	1.7	1.8	1.8	1.9	1.9	2.1	2.1	2.1	2.2	2.2	"

**Entoilage** 51cm - 0.8m

**Fleurs B** 115,150cm\* - 0.8m

**Entoilage** 51cm - 2.2m

**Fleurs C** 115,150cm\* - 0.8m

**MESURES DES VÊTEMENTS FINI (Motif et aisance de port compris)**

A Poitrine	114	117	121	126	131	136	141	146	151	156	cm
Longueur finie – dos, votre nuque à l'ourlet											
Chemise A	70	71	72	72	73	74	74	75	76	76	cm

\*avec sens \*\*sans sens



A



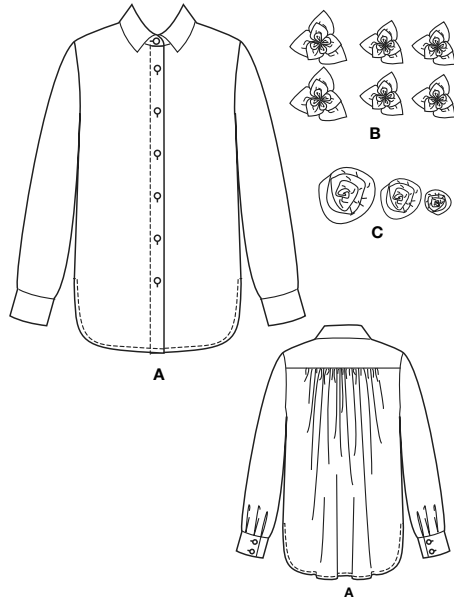
B



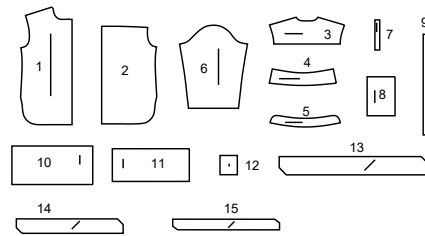
C

# Simplicity®

Thank you for purchasing this Simplicity pattern. We made every effort to provide you with a high quality product.



15 PIECES



- 1 FRONT - A
- 2 BACK - A
- 3 YOKE BACK - A
- 4 COLLAR - A
- 5 NECK BAND - A
- 6 SLEEVE - A
- 7 CONTINUOUS LAP - A
- 8 CUFF - A
- 9 BUTTONHOLE GUIDE - A
- 10 LARGE FLOWER - B
- 11 SMALL FLOWER - B
- 12 BASE - C
- 13 LARGE FLOWER - C
- 14 MEDIUM FLOWER - C
- 15 SMALL FLOWER - C

## General Directions

### The Pattern

- SYMBOLS**
- GRAIN LINE Place on straight grain of fabric parallel to selvage
  - PLACE SOLID LINE on fold of fabric.
  - CENTER FRONT OR BACK of garment.
  - NOTCHES
  - DOTS
  - CUTTING LINE
  - LENGTHEN OR SHORTEN LINES
- SEAM ALLOWANCE: 5/8" (1.5cm) unless otherwise stated is included but not printed on MULTI-SIZE PATTERNS. Mark your size with colored felt tip pen. See chart on tissue for how to use MULTI-SIZE PATTERNS.

- ADJUST IF NEEDED**
- Make adjustments before placing pattern on fabric.
- TO LENGTHEN:** Cut pattern between lengthen or shorten lines. Spread pattern evenly, the amount needed and tape to paper.
- TO SHORTEN:** At lengthen or shorten lines, make an even pleat taking up amount needed. Tape in place.
- When lengthen or shorten lines are not given, make adjustments at lower edge of pattern.

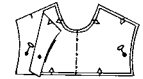
### Cutting/Marking

- BEFORE CUTTING:**
- PRESS pattern pieces with a warm dry iron. PRE-SHRINK fabric by pre-washing washables or steam-pressing non-washables.
- CIRCLE your cutting layout.
- PIN pattern to fabric as shown in Cutting Layouts.
- FOR DOUBLE THICKNESS: Fold fabric with RIGHT sides together.
  - FOR SINGLE THICKNESS: Place fabric RIGHT side up.
  - FOR PILE, SHADED OR ONE WAY DESIGN FABRICS: Use "with nap" layouts

**AFTER CUTTING:**

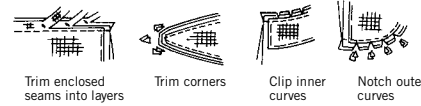
Transfer markings to WRONG side of fabric before removing pattern. Use pin and chalk method or dressmaker's tracing paper and wheel.

- To Quick Mark:**
- Snip edge of fabric to mark notches, ends of fold lines and center lines.
  - Pin mark dots.



### Sewing

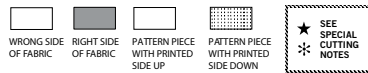
- SEW garment following Sewing Directions.
- PIN or machine-baste seams matching notches.
- STITCH 5/8" (1.5 cm) seams unless otherwise stated.
- PRESS seams open unless otherwise indicated clipping when necessary so seams will lie flat.
- TRIM seams to reduce bulk, as shown below.



### SPECIAL CUTTING NOTES

- ★ If layout shows a piece extending past fold, cut out all pieces except piece that extends.
- ✱ Mark small arrows along both selvages indicating direction of nap or design. Fold fabric crosswise with RIGHT sides together, and cut along fold (a).
- Turn one fabric layer around so arrows on both layers go in the same direction. Place RIGHT sides together (b).

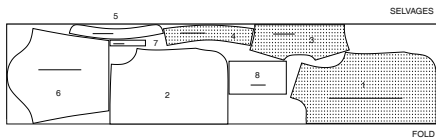
## Cutting Layouts



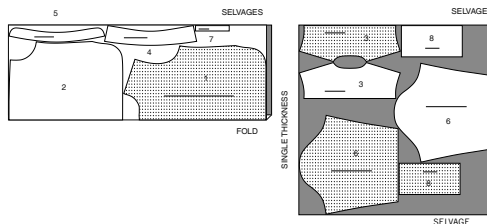
POSITION OF PATTERN PIECES MAY VARY SLIGHTLY ACCORDING TO YOUR PATTERN SIZE

**SHIRT A**  
USE PIECES 1 2 3 4 5 6 7 8

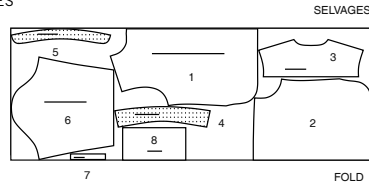
45" (115CM) WITH NAP  
SIZES 8 10 12 14 16 18 20



45" (115CM) WITH NAP  
SIZES 22 24 26

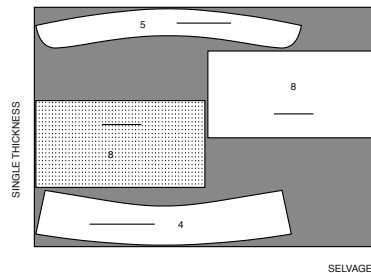


60" (150CM)  
WITH NAP  
ALL SIZES



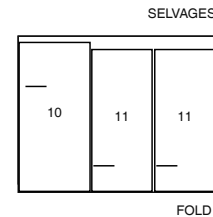
**INTERFACING A**  
USE PIECES 4 5 8

20" (51CM)  
ALL SIZES

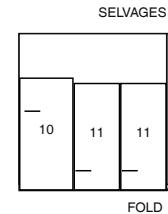


**FLOWERS B**  
USE PIECES 10 11

45" (115CM)  
WITH NAP  
ALL SIZES

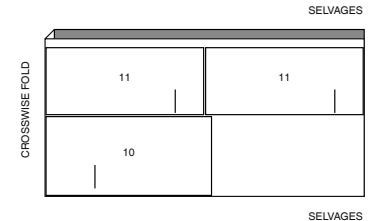


60" (150CM)  
WITH NAP  
ALL SIZES



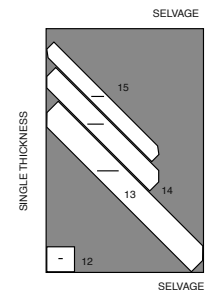
**INTERFACING B**  
USE PIECES 10 11

20" (51CM)  
ALL SIZES



**FLOWERS C**  
USE PIECES 14 15 16 17

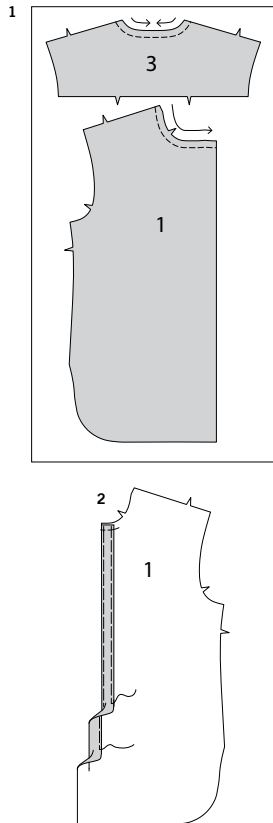
45" OR 60" (115CM OR 150CM)  
WITH NAP  
ALL SIZES



## SEWING TUTORIALS



Build your skills viewing short, easy-to-follow videos at [simplicity.com/sewingtutorials](http://simplicity.com/sewingtutorials)



## Sewing Directions

FABRIC KEY

RIGHT SIDE	WRONG SIDE	INTERFACING	LINING	LINING
------------	------------	-------------	--------	--------

Read **General Directions** on page 1 before you begin.

Sewing methods in **BOLD TYPE** have Sewing Tutorial Video available. Scan **QR CODE** to watch videos:

**EDGE STITCH** - See **Machine Stitches**: "how to edgestitch" video.

**FINISH** - See **Seams**: "how to finish seam allowances" video.

**GATHER** - see **Gather**: "sewing gathers" video.

**SLEEVE** - See **Armholes/Sleeves**: "sewing a set-in sleeve" video.

**SLIPSTITCH** - See **Hand Stitching**: "how to slip-stitch" video.

**STAYSTITCH** - See **Machine Stitches**: "how to do staystitching" video.

**STITCH IN THE DITCH** - See **Machine Stitches**: "how to stitch in the ditch" video.

**TACK** - See **Hand-Stitching**: "how to tack" video.

**TRIM** - See **How to Sew**: **Trim, Clip, and Layer Seams**" video.

**UNDERSTITCH** - See **Machine Stitches**: "how to understitch" video.

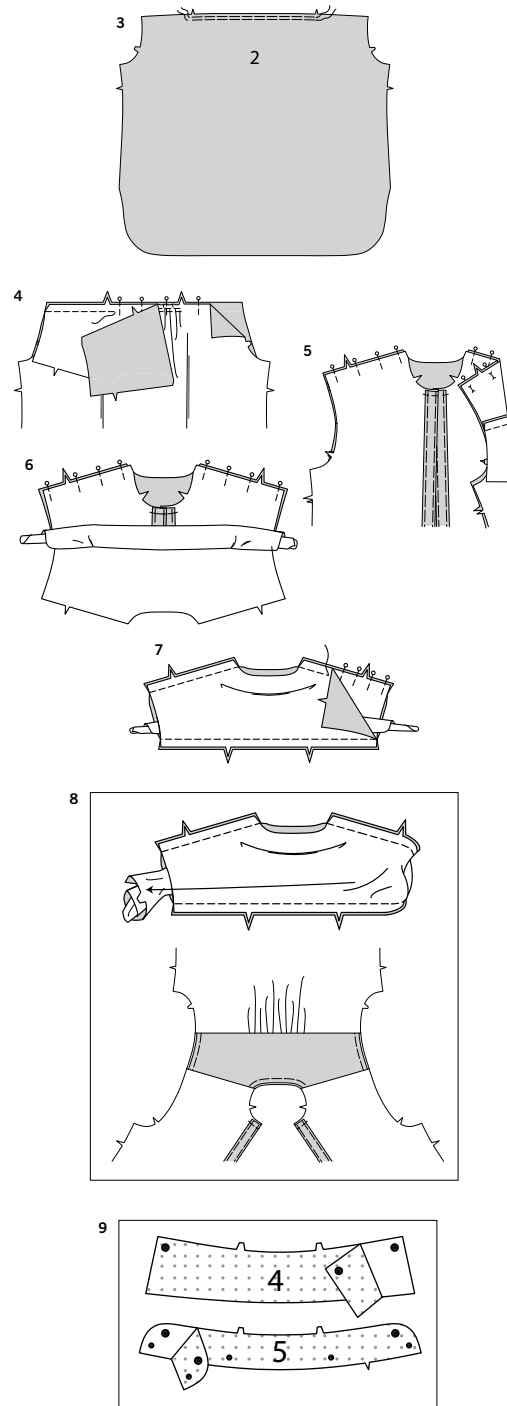
**PATTERN PIECES WILL BE IDENTIFIED BY NUMBERS THE FIRST TIME THEY ARE USED.**

**STITCH SEAMS WITH RIGHT SIDES TOGETHER UNLESS OTHERWISE STATED.**

## SHIRT A, AND DETACHABLE FLOWERS B, C

**1. STAYSTITCH** neck edge of FRONT (1) and YOKE BACK (3) sections in direction of arrows. Stay-stitching will not be shown in the following illustrations.

**2.** Turn front edge to **INSIDE** along fold line for interfacing; press. Baste close to inner edge. (Remove basting when shirt is finished.) Turn front edge to **INSIDE** again along fold line for facing; press. Baste across upper edge. Baste inner edge of facing in place to within 5" (12.5cm) of lower edge.



**3. GATHER** upper edge of BACK (2) between notches.

**4.** With **RIGHT** sides together, pin yoke to back, having raw edges even. Pull up gathering stitches to fit; baste. Pin **RIGHT** side of yoke facing to **WRONG** side of back, having raw edges even. Stitch through all thicknesses. **TRIM** seam.

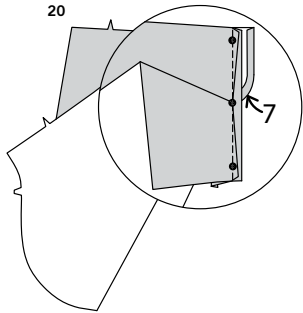
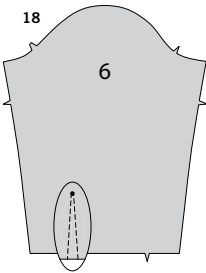
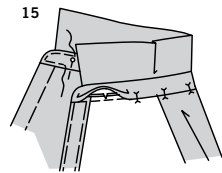
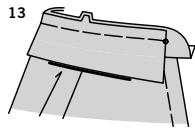
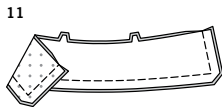
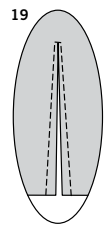
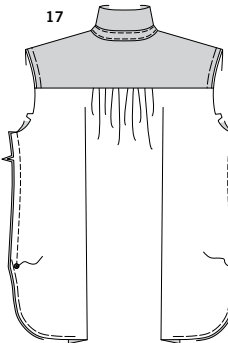
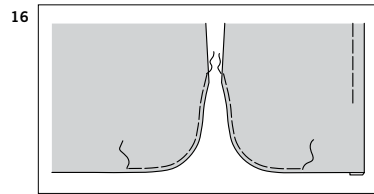
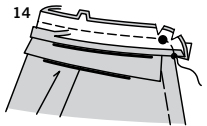
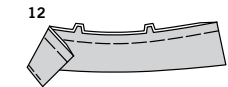
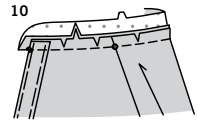
**5.** Press yoke up, leaving yoke facing down toward back, as shown. With **RIGHT** sides together, pin yoke to fronts at shoulder edges.

**6.** Roll back and both front sections together toward yoke, as shown.

**7.** Bring the yoke facing up and pin shoulder edges together. (Rolled shirt is between yoke layers.) Stitch through all thicknesses, being careful not to catch in rolled shirt. **TRIM** seams.

**8.** Pull out rolled shirt through one armhole opening, turning shirt **RIGHT** side out. Press all yoke seams. Machine-baste back neck and armhole edges together.

**9.** Apply fusible interfacing to **WRONG** side of one **COLLAR** (4) and one **NECK BAND** (5) section, following manufacturer's directions. The remaining sections will be used as facings.



**10.** Clip neck edge of shirt to stay-stitching. With **RIGHT** sides together, pin single notched edge of band to neck edge, placing small dots at shoulder seams, matching centers back and remaining small dots. Neckband extends 5/8" (1.5cm) beyond front opening edges. Stitch neck edge.

**TRIM** seam; clip curves.  
Press band out; press seam toward band.

**11.** With **RIGHT** sides together and raw edges even, stitch facing to collar, leaving notched edges open.

**TRIM** seam; clip corners.

**12. UNDERSTITCH** collar facing as far as possible.

Turn collar; press. Machine-baste raw edges together.

**13.** With **RIGHT** sides together and raw edges even, pin collar (facing side) to neck band, matching centers back, double notches, and large dots. Machine-baste.

**14.** Press under 5/8" (1.5cm) on single notched edge of neckband facing; trim to 3/8" (1cm). With **RIGHT** sides together and raw edges even, pin neck band facing to neck band (over collar), matching centers back and large dots.

Stitch front and double notched edge.

**TRIM** seam; clip curves.

**15.** Turn band facing to **INSIDE**; press.

Pin pressed edge of facing over seam, placing pins on **OUTSIDE**. On **OUTSIDE**, **EDGESTITCH** close to all edges of neckband, catching in pressed edge of facing on **INSIDE**.

**16.** Stitch 1/4" (6mm) from lower curved edges of fronts and back, using long machine stitches, as shown.

**17.** Stitch fronts to back at sides ending at large dots.

**18.** To make slash opening at lower edge of **SLEEVE** (6), stitch along stitching lines. Pivot and take one small stitch across point.

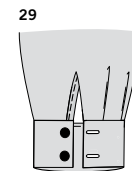
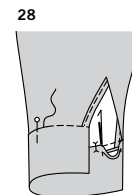
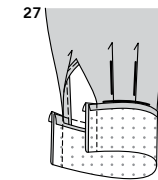
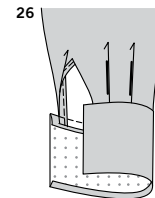
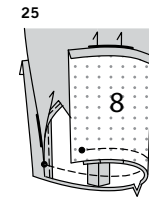
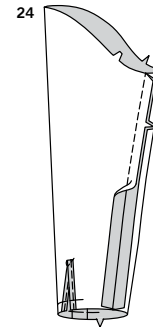
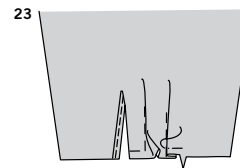
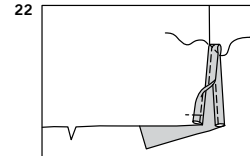
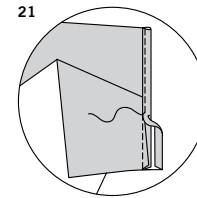
**19.** Slash between stitching, being careful not to slash through the stitch at the point.

**TIP** - To prevent fabric from fraying, treat the point with a liquid seam sealant, such as Fray Check™. **TEST** on a scrap of fabric first.

**20.** Press under 1/4" (6mm) on unmarked edge of **CONTINUOUS LAP** (7). Spread slashed edges of sleeve apart so that they form a straight line.

Pin **RIGHT** side of continuous lap to **WRONG** side of slashed edges, matching stitching lines and small dots. Sleeve seam allowance will be 1/4" (6mm) at ends but taper close to nothing at center dot.

Stitch along stitching line, being careful not to pucker sleeve at center dot. Press seam toward lap.



**21.** Pin pressed edge of lap to **OUTSIDE** slightly over stitching. **EDGESTITCH** close to pressed edge.

**22.** Turn front edge of lap to **INSIDE**; baste in place across lower edge. To keep lap in place, stitch diagonally across upper edge of lap as shown.

**23.** To make soft pleats, on **OUTSIDE**, fold along solid lines. Bring folds to broken lines; pin. Baste across raw edge.

**24.** Stitch underarm seam.

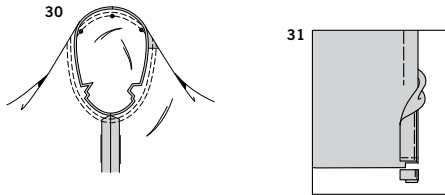
**25.** Apply **INTERFACING** to cuff (8) sections. Press under 1/2" (1.3cm) on unnotched edge of cuff. With **RIGHT** sides together, pin sleeve to cuff, placing opening edges at small dots. Stitch. **TRIM** seam.

**26.** Press seam toward cuff, pressing cuff out.

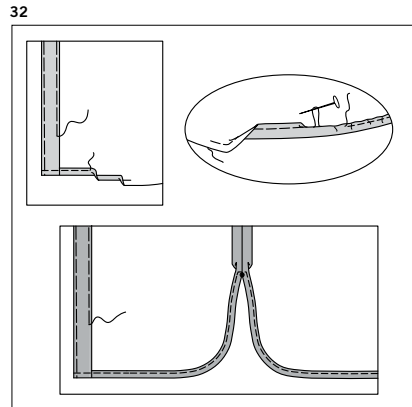
**27.** Fold cuff along foldline, with **RIGHT** sides together. Stitch ends. **TRIM** seams.

**28.** Turn cuff; press. On **INSIDE**, pin pressed edge of cuff 1/8" (3mm) over seam, placing pins on **OUTSIDE**. On **OUTSIDE**, **STICH IN THE DITCH** or "groove" of the seam, catching in pressed edge on **INSIDE**.

**29.** Make buttonholes in cuff at markings. Sew buttons at small dots.

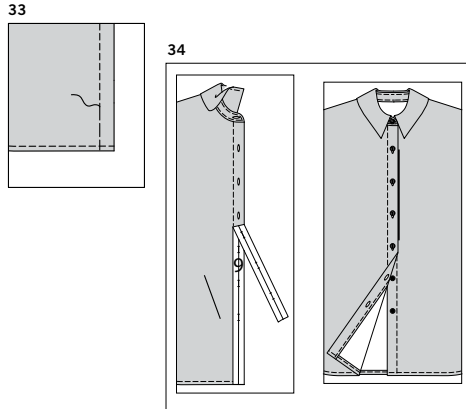


- 30.** Turn sleeve RIGHT side out.  
Hold shirt WRONG side out with armhole toward you. With RIGHT sides together, pin **SLEEVE** to armhole edge with center small dot at shoulder seam, matching underarm seams, notches and remaining small dots. Baste. Stitch. Stitch again 1/8" (3mm) from first stitching. Trim seam below notches close to stitching. Press only the seam allowance, shrinking out fullness.



- 31.** Open out lower edge of front along line for facing. Turn facing to OUTSIDE. Stitch 5/8" (1.5cm) from lower edge of facing. Trim facing close to stitching. Trim shirt to within 5/8" (1.5cm) from inner edge of facing.

- 32.** Turn facing to INSIDE, turning up 5/8" (1.5cm) hem allowance. Turn in 1/4" (6mm) on lower raw edge. Pull thread to ease in fullness. Stitch close to inner edge between opening edges, squaring stitches just above large dots. Press. Baste remainder of facing in place along inner edge.



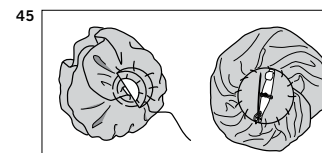
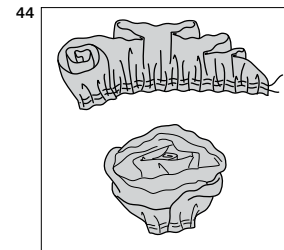
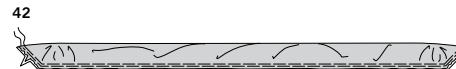
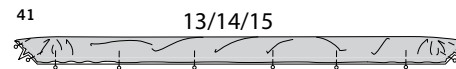
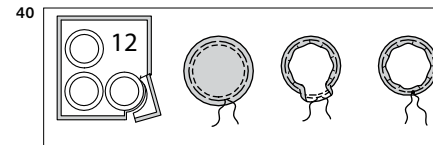
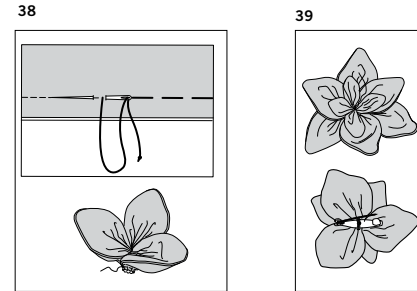
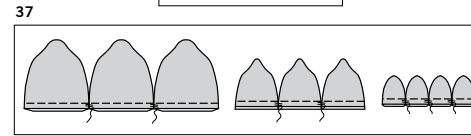
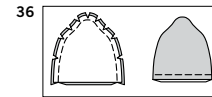
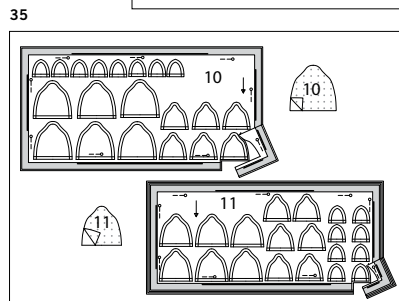
- 33.** On OUTSIDE, machine-stitch facing in place as basted. Remove basting stitches.

- 34.** Make buttonhole in neckband at marking. To mark buttonholes in RIGHT front, place **BUTTONHOLE GUIDE** (9) along finished edge of garment, matching centers, as shown. Transfer buttonhole markings to shirt. Make buttonholes at markings. Lap RIGHT front over LEFT, matching centers. Sew buttons under buttonholes.

#### CONTINUE AS FOLLOWS FOR VIEW B

**NOTES:** *Stitch petals in 1/4" (6mm) seams. We suggest that you make photocopies of flower tissue patterns, or trace patterns onto separate pieces of tissue paper. This way you will have a fresh pattern for cutting multiple sections of fabric and interfacing.*

- 35.** Apply fusible interfacing to WRONG side of each **LARGE FLOWER** (10) block and **SMALL FLOWER** (11) block.



- 36.** Pin matching petal sections, RIGHT sides together, having raw edges even. Stitch, leaving short straight end open. Clip curves. Turn petal; press. Stitch 1/4" (6mm) from raw edges.

**NOTE:** Petals will make a total of six flowers; two large and four small. Separate the petals from the large block from the petals from the small block. Labeling each petal as belonging to the large or small group will prevent you from mixing them up.

- 37.** Make each flower, as follows: Group three large petals together in a straight line, having inner edges just meet. Hand-tack inner side edges together within seam allowance, as shown. Hand-tack three medium sized petals together and four small petals together in same manner.

- 38.** Thread a hand-sewing needle with strong thread; knot free ends. Make long running stitches on each petal group along the 1/4" (6mm) stitching, making them about 1/4" (6mm) apart. Pull up thread to shape flower, allowing petals to curl slightly inward. (A slight base will form.) Fasten securely in place, joining the first and last petals. Repeat this process for the small and medium petal groups.

- 39.** Place one medium petal group on top of one large petal group, matching centers and rotating petals in a pleasing manner. Tack underside of medium petal to large petal near center, keeping edges of petals free. Attach small petal group to medium petal group in same manner. Sew a pin back to bottom of flower base, as shown.

#### CONTINUE AS FOLLOWS FOR VIEW C

- 40.** Cut each circle from **BASE** (12) along outer solid line. Stitch 1/4" (6mm) from outer edges. Stitch 1/8" (3mm) from raw edge, using long stitches. Turn in raw edge along 1/4" (6mm) stitching. Pull thread to ease in fullness; knot ends. Press. Set bases aside.

**TIP:** It will be easier to hand-stitch around the small circle and finger-press edge in place.

- 41.** Make each **LARGE FLOWER** (13), **MEDIUM FLOWER** (14), and **SMALL FLOWER** (15), as follows: Starting in the center, fold flower in half lengthwise, having WRONG sides together, matching notches, and having raw edges even. Manipulate end edges to fit; pin. The fold edge will be soft, rounded, and wavy; do not press.

- 42.** To **GATHER**, machine-stitch 3/8" (6mm) from raw edge and 1/8" (3mm) below first stitching, using a long machine-stitch.

- 43.** Pull up gathers to measure 15-1/2" (39.5cm) for small flower, 16-1/2" (42cm) for medium flower, and 22-1/2" (56cm) for large flower. Fasten thread securely.

- 44.** Starting at one end, roll gathered edge of rose, hand-tacking as you roll.

- 45.** **SLIPSTITCH** pressed edge of base over raw edge on underside of rose, as shown. Attach a bar pin to underside of each flower. Pin flowers to shirt as shown on envelope or as desired.



# Congrats!

You've completed your sewing adventure

---

## SHARE YOUR LOOK



Post your pattern and tag us using [#simplicitypatterns](#)  
[@simplicity\\_creative\\_group](#)  
[@simplicitymccallsuk](#)  
[@simplicitymccallsaustralia](#)  
for a chance to be featured on our social media.

Look for more PDF patterns at [simplicity.com](#) or for customers outside the U.S. and Canada visit [sewdirect.com](#) and [sewdirect.com.au](#)

Have a question or need help with your sewing project contact us:  
[Simplicity.com](#)    [Sewdirect.com](#)    [Sewdirect.com.au](#)

**Simplicity**  
by design™