

S3099

Simplicity®



Detachable

A,C

B,C



Average

MISSES' AND MISS PETITE DRESS IN TWO LENGTHS WITH DETACHABLE 3D FLOWERS

**Suggested Fabrics:** Crepe, Linen Blends, Mikado, Pique, Satin. **Lining:** Lining Fabric. **Interfacing:** Lightweight Fusible.

**Notions:** A,B: One 14" (36cm) invisible zipper. C: Three 1" (2.5cm) bar pins.

Sizes	4	6	8	10	12	14	16	18	20
European	30	32	34	36	38	40	42	44	46

**BODY MEASUREMENTS:** Select pattern size based on body measurements

Bust	29½	30½	31½	32½	34	36	38	40	42	Ins.
Waist	22	23	24	25	26½	28	30	32	34	"
Hip-9" below waist	31½	32½	33½	34½	36	38	40	42	44	"
Back-neck to waist	15¾	15½	15¾	16	16¼	16½	16¾	17	17¼	"

Dress A	45**	1½	1½	1½	1½	1½	1%	2%	2%	2¼	Yds.
	60**	1%	1%	1%	1%	1%	1%	1%	1%	1½	"

Lining	45***	1%	1%	1%	1%	1%	1%	1%	1%	1%	"
--------	-------	----	----	----	----	----	----	----	----	----	---

Interfacing A,B	20" - 1 yd.										
-----------------	-------------	--	--	--	--	--	--	--	--	--	--

Dress B	45**	3%	3%	3%	3%	3%	3%	3%	3%	3¼	Yds.
	60**	2	2	2	2	2	2½	2½	2½	2¼	"

Lining	45***	1¾	1¾	1¾	1%	1%	2¾	3	3¾	3¼	"
--------	-------	----	----	----	----	----	----	---	----	----	---

Flowers C	45/60** - ¾ yd.										
Interfacing	20" - ¼ yd.										

**FINISHED GARMENT MEASUREMENTS (Includes Design and Wearing Ease)**

A,B Bust	33	34	35	36	37½	39½	41½	43½	45½	Ins.
A,B Waist	25	26	27	28	29½	31½	33½	35½	37½	"
A,B Hip	35	36	37	38	39½	41½	43½	45½	47½	"
Width, lower edge										
Dress A	35½	36½	37½	38½	40	42	44	46	48	Ins.
Finished back length from base of neck										
Dress A	32¾	32½	32¾	33	33¾	33¾	33¾	34	34¼	Ins.
Dress B	57¼	57½	57¾	58	58¾	58¾	58¾	59	59¼	"

\*with nap \*\*without nap

Moins Facile

ROBE EN DEUX LONGUEURS AVEC FLEURS 3D DÉTACHABLES POUR JEUNES FEMMES ET PETITS JEUNES FEMMES

**Tissus Conseillés:** Crêpe, Lin mélangés, Mikado, Piqué, Satin. **Doubleure:** Tissu à doublure. **Entoilage:** Thermocollant léger.

**Mercurie:** A,B: 1 fermeture à glissière invisible de 36cm. C: 3 goupilles de barre de 2.5cm.

Tailles	4	6	8	10	12	14	16	18	20
Françaises	32	34	36	38	40	42	44	46	48
Européen	30	32	34	36	38	40	42	44	46

**MESURES DU CORPS:** Choisissez la taille du patron basée sur les mesures du corps

Poitrine	75	78	80	83	87	92	97	102	107	cm
Taille	56	58	61	64	67	71	76	81	87	"
Hanches (23cm au-dessous de la taille)	80	83	85	88	91	97	102	107	112	cm
Dos du cou à la taille	39	39	40	41	41	42	42	43	44	"

Robe A	115cm*	1.4	1.4	1.4	1.4	1.4	1.5	1.9	1.9	2.1	m
	150cm*	1.3	1.3	1.3	1.3	1.3	1.3	1.3	1.3	1.4	"

Doubleure	115cm**	1.0	1.0	1.0	1.0	1.0	1.1	1.7	1.7	1.7	"
-----------	---------	-----	-----	-----	-----	-----	-----	-----	-----	-----	---

Entoilage A,B	51cm - 0.9m										
---------------	-------------	--	--	--	--	--	--	--	--	--	--

Robe B	115cm*	3.1	3.1	3.1	3.1	3.1	3.3	3.3	3.4	3.4	m
	150cm*	1.8	1.8	1.8	1.8	1.8	1.8	1.9	1.9	1.9	"

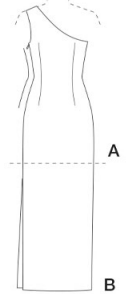
Doubleure	115cm**	1.6	1.6	1.6	1.6	1.7	2.5	2.7	3.0	3.0	"
-----------	---------	-----	-----	-----	-----	-----	-----	-----	-----	-----	---

Fleurs C	115/150cm* - 0.8m										
Entoilage	51cm - 0.2m										

**MESURES DES VÊTEMENTS FINI (Motif et aisance de port compris)**

A,B Poitrine	84	86	89	91	95	100	105	110	116	cm
A,B Taille	64	66	69	71	75	80	85	90	95	"
A,B Hanches	89	91	94	97	100	105	110	116	121	"
Largeur à l'ourlet										
Robe A	90	93	95	98	102	107	112	117	122	cm
Longueur finie - dos, votre nuque à l'ourlet										
Robe A	82	83	83	84	84	85	86	86	87	cm
Robe B	145	146	147	147	148	149	149	150	150	"

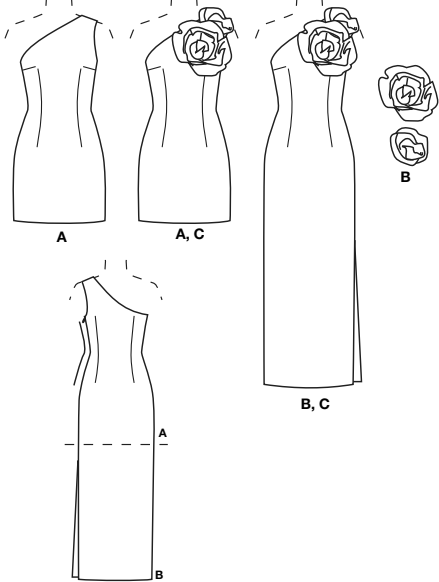
\*avec sens \*\*sans sens



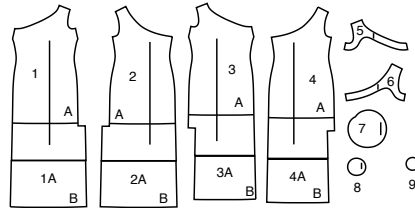
C

# Simplicity

Thank you for purchasing this Simplicity pattern. We made every effort to provide you with a high quality product.



9 PIECES



- 1 Front-A,B
- 1A Extension
- 2 Back-A,B
- 2A Extension
- 3 Front Lining-A,B
- 3A Extension
- 4 Back Lining-A,B
- 4A Extension
- 5 Front Facing-A,B
- 6 Back Facing-A,B
- 7 Flower-C
- 8 Base (Large)-C
- 9 Base (Small)-C

## General Directions

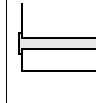
### The Pattern

- SYMBOLS**
- GRAIN LINE Place on straight grain of fabric parallel to selvage
  - PLACE SOLID LINE on fold of fabric.
  - CENTER FRONT OR BACK of garment.
  - NOTCHES
  - DOTS
  - CUTTING LINE
  - LENGTHEN OR SHORTEN LINES

SEAM ALLOWANCE: 5/8" (1.5cm) unless otherwise stated is included but not printed on MULTI-SIZE PATTERNS. Mark your size with colored felt tip pen. See chart on tissue for how to use MULTI-SIZE PATTERNS.

**ADJUST IF NEEDED**  
Make adjustments before placing pattern on fabric.

**TO LENGTHEN:**  
Cut pattern between lengthen or shorten lines. Spread pattern evenly, the amount needed and tape to paper.



**TO SHORTEN:**  
At lengthen or shorten lines, make an even pleat taking up amount needed. Tape in place.

When lengthen or shorten lines are not given, make adjustments at lower edge of pattern.

### Cutting/Marking

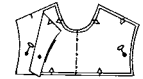
**BEFORE CUTTING:**  
PRESS pattern pieces with a warm dry iron. PRE-SHRINK fabric by pre-washing washables or steam-pressing non-washables.

CIRCLE your cutting layout.  
PIN pattern to fabric as shown in Cutting Layouts.

- FOR DOUBLE THICKNESS: Fold fabric with RIGHT sides together.
- FOR SINGLE THICKNESS: Place fabric RIGHT side up.
- FOR PILE, SHADED OR ONE WAY DESIGN FABRICS: Use "with nap" layouts

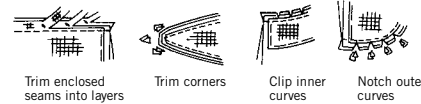
**AFTER CUTTING:**  
Transfer markings to WRONG side of fabric before removing pattern. Use pin and chalk method or dressmaker's tracing paper and wheel.

- To Quick Mark:**
- Snip edge of fabric to mark notches, ends of fold lines and center lines.
  - Pin mark dots.



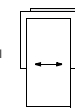
### Sewing

- SEW garment following Sewing Directions.
- PIN or machine-baste seams matching notches.
- STITCH 5/8" (1.5 cm) seams unless otherwise stated.
- PRESS seams open unless otherwise indicated clipping when necessary so seams will lie flat.
- TRIM seams to reduce bulk, as shown below.

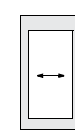


### SPECIAL CUTTING NOTES

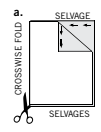
★ If layout shows a piece extending past fold, cut out all pieces except piece that extends.



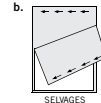
Open out fabric to single thickness. Cut extending piece on RIGHT side of fabric in position shown.



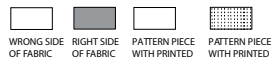
✱ Mark small arrows along both selvages indicating direction of nap or design. Fold fabric crosswise with RIGHT sides together, and cut along fold (a).



Turn one fabric layer around so arrows on both layers go in the same direction. Place RIGHT sides together (b).



## Cutting Layouts

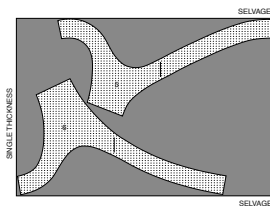


★ SEE SPECIAL CUTTING NOTES

POSITION OF PATTERN PIECES MAY VARY SLIGHTLY ACCORDING TO YOUR PATTERN SIZE

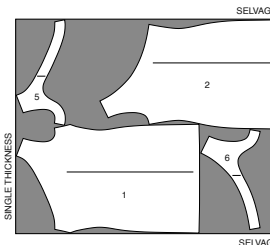
### INTERFACING A,B

USE PIECES 5 6  
20" (51CM) WITHOUT NAP  
ALL SIZES

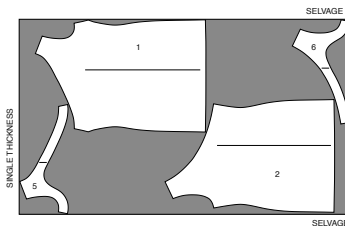


### DRESS A

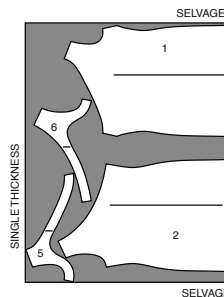
USE PIECES 1 2 5 6  
45" (115CM) WITH NAP  
SIZES 4 6 8 10 12 14



45" (115CM) WITH NAP  
SIZES 16 18 20



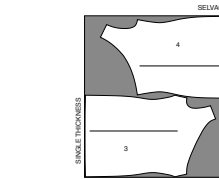
60" (150CM) WITH NAP  
ALL SIZES



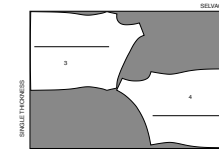
### LINING A

USE PIECES 3 4

45" (115CM) WITHOUT NAP  
SIZES 4 6 8 10 12 14



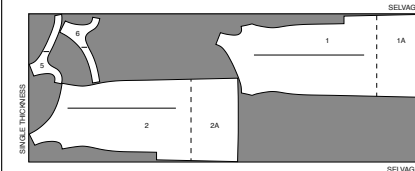
45" (115CM) WITHOUT NAP  
SIZES 16 18 20



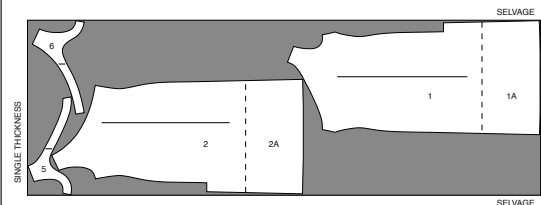
### DRESS B

USE PIECES 1 1A 2 2A 5 6  
NOTE: BEFORE CUTTING FABRIC, JOIN PIECES 1, 1A and 2, 2A FOLLOWING INSTRUCTIONS ON TISSUE PATTERN.

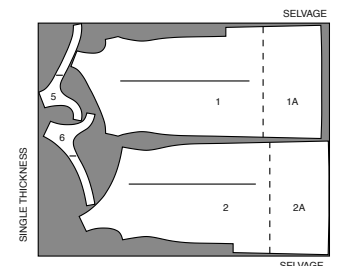
45" (115CM) WITH NAP  
SIZES 4 6 8 10 12



45" (115CM) WITH NAP  
SIZES 14 16 18 20



60" (150CM) WITH NAP  
ALL SIZES



CUTTING LAYOUTS CONTINUED ON PAGE 2

# S3099

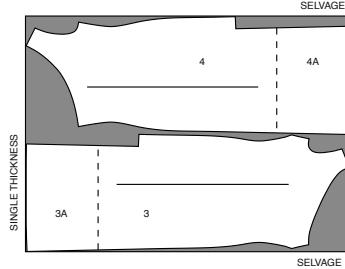
2 of 4

## LINING B

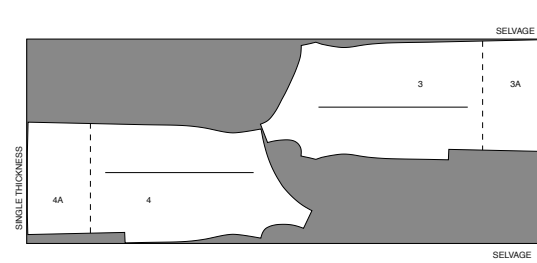
USE PIECES 3 3A 4 4A

**NOTE:** BEFORE CUTTING FABRIC, JOIN PIECES 3, 3A and 4, 4A FOLLOWING INSTRUCTIONS ON TISSUE PATTERN.

45" (115CM)  
WITHOUT NAP  
SIZES 4 6 8 10 12



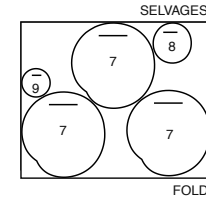
45" (115CM)  
WITHOUT NAP  
SIZES 14 16 18 20



## FLOWERS C

USE PIECES 7 8 9

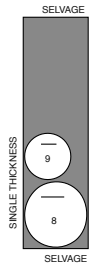
45" TO 60" (115CM TO 150CM)  
WITH NAP  
ALL SIZES



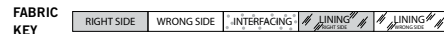
## INTERFACING C

USE PIECES 8 9

20" (51CM)  
WITHOUT NAP  
ALL SIZES



## Sewing Directions



Read **General Directions** on page 1 before you begin.

Sewing methods in **BOLD TYPE** have Sewing Tutorial Video available. Scan **QR CODE** to watch videos:

**CATCH STITCH** – See Hand Stitching: “hand sewing a catch stitch” video.

**DOUBLE POINTED DART** – See Darts: “sewing double pointed dart” video.

**FLAT DART** – See Darts: “sewing flat dart” video.

**INVISIBLE ZIPPER** – See Zippers: “sewing an invisible zipper” video.

**SLIPSTITCH** – See Hand Stitching: “how to slip stitch” video.

**STAYSTITCH** – See Machine Stitches: “how to do stay stitching” video.

**TRIM SEAM** – See Seams: “how to trim, clip and layer seams” video.

**UNDERSTITCH** – See Machine Stitches: “how to understitch” video.

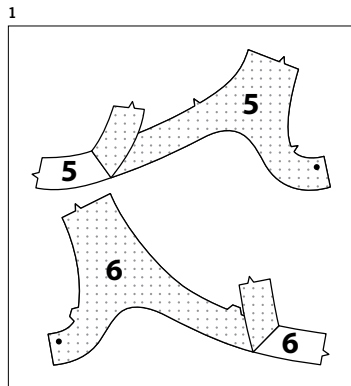
**PATTERN PIECES WILL BE IDENTIFIED BY NUMBERS THE FIRST TIME THEY ARE USED.**

**STITCH 5/8" (1.5CM) SEAMS WITH RIGHT SIDES TOGETHER UNLESS OTHERWISE STATED.**

### SEWING TUTORIALS



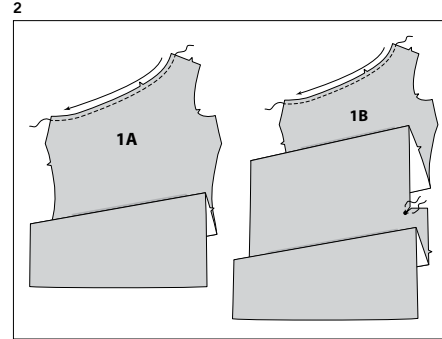
Build your skills viewing short, easy-to-follow videos at [simplicity.com/sewingtutorials](http://simplicity.com/sewingtutorials)



## DRESS A, B

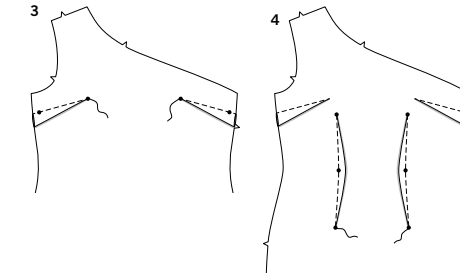
### INTERFACING

1. Pin interfacing to **WRONG** side of **FRONT FACING** (5) and **BACK FACING** (6). Fuse in place following manufacturer's directions.



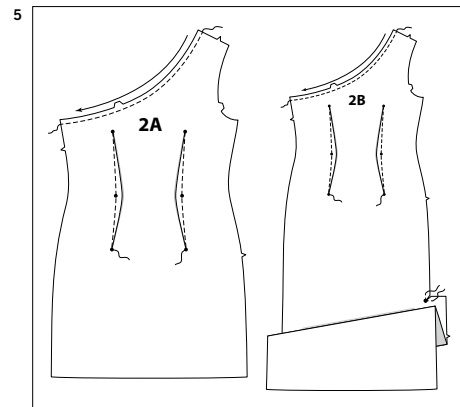
## DRESS

2. To **STAYSTITCH** neck edge of **FRONT** (1), stitch 1/2" (1.3cm) from cut edge in direction of arrows. This stitching stays in permanently to prevent stretching on curved edges. (Shown only in the first illustration.)  
**FOR VIEW B** – To reinforce inner corner at the large dot, stitch along seam line for about 1" (2.5cm) each side of large dot, stitching through dot, as shown. Clip to stitching at dot.

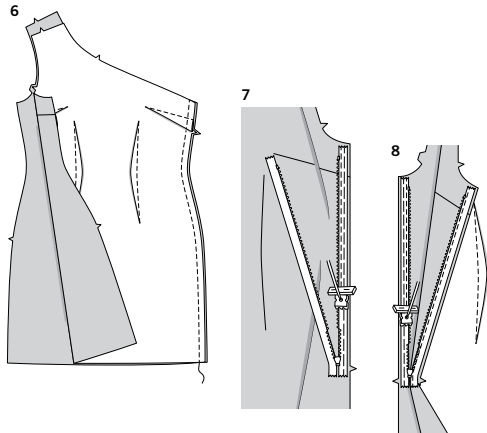


3. To make **FLAT DART**, with **RIGHT** sides together, fold the fabric through the center of the dart, bringing broken lines and small dots together. On **INSIDE**, place pins at **RIGHT** angles to the broken lines. Stitch the dart from wide end to point. Press the dart flat along the stitching to “blend” the stitches, then press dart away from neckline.

4. To make **DOUBLE POINTED DART**, with **RIGHT** sides together, fold the fabric through the center of the dart, bringing broken lines and small dots together. On **INSIDE**, place pins at **RIGHT** angles to the broken lines. Stitch the dart from the middle to one point. Then, overlapping several stitches, work from the middle to the other point. If necessary, carefully clip the dart at its widest point so that it will lie flat. Press the dart flat along the stitching to “blend” the stitches, then press dart toward front.



5. **STAYSTITCH** neck edge of **BACK** (2) and make **DOUBLE POINTED DART(s)** in the same manner as for front.  
**FOR VIEW B** – To reinforce inner corner at the large dot, stitch along seam line for about 1" (2.5cm) each side of large dot, stitching through dot, as shown. Clip to stitching at dot.



6. Stitch front to back at RIGHT side edges.

### ZIPPER

**NOTE:** The zipper is longer than the zipper opening and will be adjusted after the zipper is inserted.

7. To insert the **INVISIBLE ZIPPER**, open the zipper and press the tape flat on the **WRONG** side unrolling the coils. Do not press the coils. (Use a low iron setting.) On **OUTSIDE**, pin **LEFT** side of the zipper face down on the **LEFT** side of the zipper opening. Have the coil along the seam line, the tape within the seam allowance and the top stop a generous 5/8" (1.5cm) below upper edge, as shown. Hand-baste along center of the tape. Position zipper foot at the top of the zipper with **LEFT** groove of the foot over coil. Stitch along tape to the notch. Back-stitch to reinforce.

8. Pin the remaining half of the zipper to the **RIGHT** side of the zipper opening in same manner. Make sure the upper and lower edges of the garment are even. Hand-baste along the center of the tape. Position zipper foot at the top of the zipper with **RIGHT** groove over the coil. Stitch along tape to the notch. Back-stitch to reinforce.

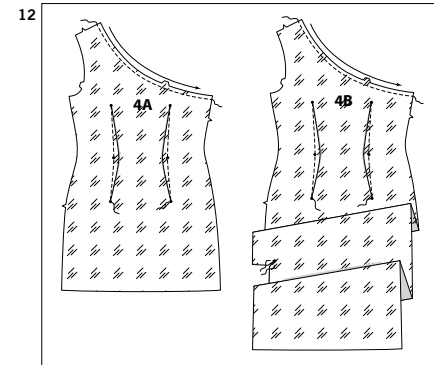
9. Close zipper and check that it is invisible from the **OUTSIDE**.

Pull the free ends of the zipper tape away from the seam allowance. Pin remaining **LEFT** side seam together below zipper (to the large dot for **VIEW B**). Position zipper foot all the way to the **LEFT** so the needle goes down through the outer notch of the foot. Start stitching seam 1/4" (6mm) above lowest stitch and slightly to the **LEFT**. Stitch seam for about 3" (7.5cm). Stitch remainder of seam using your regular presser foot.

10. If the zipper is longer than the opening, using a strong thread, hand-sew a few small stitches across ends of coils at end of opening. Trim away lower end of zipper tape to within 5/8" (1.5cm) of hand-stitches. If you prefer, open out each seam allowance at end of zipper and stitch tape to seam allowance.

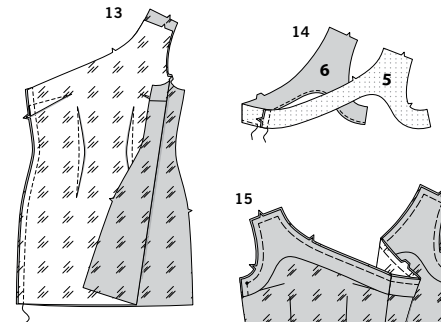
### LINING

11. **STAYSTITCH** neck edge of **FRONT LINING** (3). Make **FLAT DART**(s) and **DOUBLE POINTED DART**(s) in the same manner as dress. **FOR VIEW B** – Reinforce inner corner at the small dot, by stitching along seam line for about 1" (2.5cm) each side of small dot, stitching through dot, as shown. Clip to stitching at dot.



12. **STAYSTITCH** neck edge of **BACK LINING** (4) and make **DOUBLE POINTED DART**(s) in the same manner as for front.

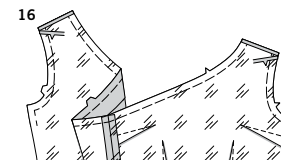
**FOR VIEW B** – To reinforce inner corner at the large dot, stitch along seam line for about 1" (2.5cm) each side of small dot, stitching through dot, as shown. Clip to stitching at dot.



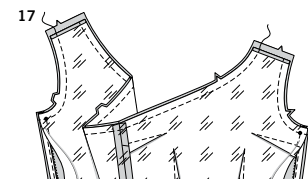
13. Stitch front lining to back lining at **RIGHT** side edges.

14. Stitch **FRONT FACING** (5) to **BACK FACING** (6) at notched end. Finish lower edge of facing by stitching 1/4" (6mm) from raw edge, and zigzag stitching close to raw edge or overlock stitching over raw edge.

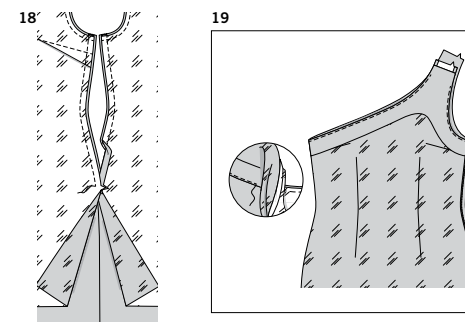
15. Pin **WRONG** side of facing to **RIGHT** side of lining at neck, armhole, and right side edges. Baste.



16. On **INSIDE**, press under 5/8" (1.5cm) seam allowance on shoulder edges along basting. Trim to 1/4" (6mm).



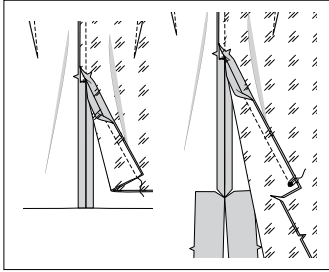
17. Open out **LEFT** side opening edges of dress, rolling zipper teeth away from opening edge. With **RIGHT** sides together, pin facing/lining to dress, matching centers and side seams. Stitch upper edge and armhole edges, leaving shoulder edges open. **TRIM SEAM.**



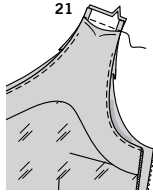
18. Pin **LEFT** side opening edges together. Using an adjustable zipper foot, stitch across facing/lining 1/2" (1.3cm) from **LEFT** side edges to the notch, keeping zipper teeth free. Trim corners. Do not trim **LEFT** side edges.

19. **UNDERSTITCH** neck and armhole edges as far as possible. Turn facing/lining and **LEFT** side edges to **INSIDE**, rolling zipper teeth back in place; press.

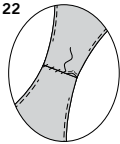
20



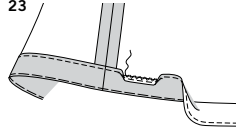
21



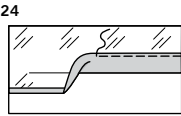
22



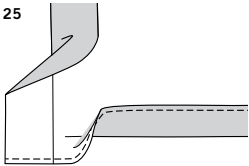
23



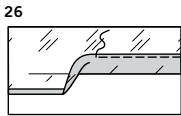
24



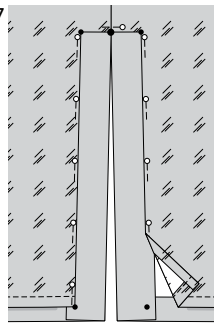
25



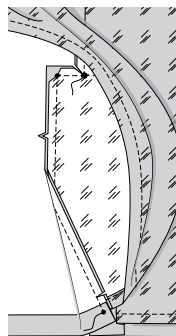
26



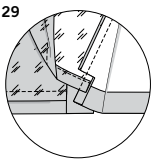
27



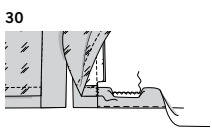
28



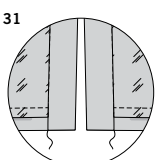
29



30



31



**20.** On INSIDE, pull up lower edge of lining at LEFT side edges. Pin lining sections together below the notch. Stitch remaining LEFT side seam edges, stitching to the small dot for **VIEW B**.

**21.** Move seam allowances of facing/lining away from shoulder edges of dress. With RIGHT sides together, stitch shoulder edges of dress. **TRIM SEAM.**

**22.** On INSIDE, press shoulder seam open. Pin pressed edges of facing/lining over seam. **SLIPSTITCH** in place, invisibly.

#### FINISHING A

**23.** Finish lower edge of dress by stitching 1/4" (6mm) from raw edge, or zigzag stitching close to raw edge or overlock stitching over raw edge. Press up 2" (5cm) hem allowance. **CATCH STITCH** in place.

**24.** Press up 1" (2.5cm) hem allowance on lower edge of lining. Turn under raw edge 1/4" (6mm); press. Stitch close to inner pressed edge.

#### LEFT SIDE SLIT B

**25.** Finish lower edge of dress by stitching 1/4" (6mm) from raw edge, or zigzag stitching close to raw edge or overlock stitching over raw edge.

**26.** Press up 1" (2.5cm) hem allowance on lower edge of lining. Turn under raw edge 1/4" (6mm); press. Stitch close to inner pressed edge.

**27.** On INSIDE, pin lining to dress at slit facings, matching large dots.

**28.** Press front and back slit facing to INSIDE along foldline. With RIGHT sides together and raw edges even, pin back slit facing edges to back slit lining edges, matching small dots, large dots, and notches, having hemmed edge of lining at small dot. Stitch. Clip seam allowance of dress and lining 1-1/4" (3.2cm) above lower small dot.

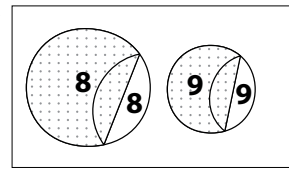
With RIGHT sides together and raw edges even, pin and stitch front slit facing edges to front slit lining edges in the same manner.

**29.** Press slit seam away from fold above clip, and toward fold below clip.

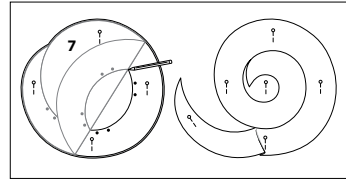
**30.** Turn facing to INSIDE; press, pressing up hem allowance on dress. **CATCH STITCH** hem in place.

**31.** **SLIPSTITCH** opening in facing to hem.

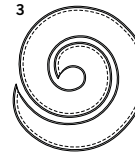
1



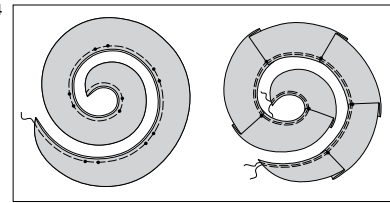
2



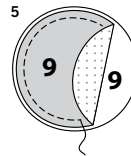
3



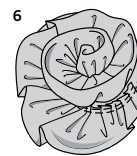
4



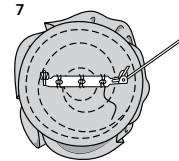
5



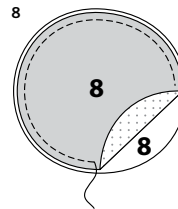
6



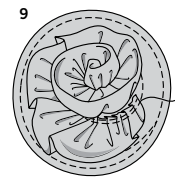
7



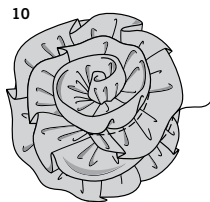
8



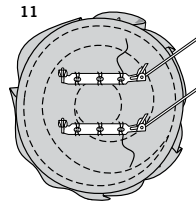
9



10



11



## FLOWER C

### INTERFACING

**1.** Pin interfacing to WRONG side of BASE (8) and BASE (9). Fuse in place following manufacturer's directions.

### SMALL AND LARGE FLOWER

**2. FOR BOTH FLOWERS** – To make one petal section for small flower and two petal sections for large flower, pin two sections of FLOWER (7) with RIGHT sides together. Pin WRONG SIDE of flower tissue to WRONG side of fabric. Cut along solid line. Transfer markings to WRONG side of fabric sections.

**3.** Pin fabric sections with RIGHT sides together and raw edges even. Stitch along 1/4" (6mm) seamline. **TRIM SEAM.**

**4.** Turn flower; press. Baste 1/4" (6mm) from raw edges. To make pleats, on OUTSIDE, fold on the outer small dot. Bring fold to inner small dot; pin. Continue folding and pinning along remaining small dots in the same manner. Using a long running stitch with heavy thread, hand-gather lower edge along 1/4" (6mm) seamline and again 1/8" (6mm) from seamline within the seam allowance.

**5. FOR SMALL FLOWER** – Pin two BASE (9) sections with WRONG sides together. Stitch 1/4" (6mm) from raw edge. Finish by zigzag stitching close to raw edge or overlock stitching over raw edge.

**6.** On OUTSIDE, pin petal section to base, placing seamline along placement line and petals extending beyond the base, pulling up gathering stitches to fit, and distributing gathers evenly. Baste; stitch.

**7.** Hand-sew one bar pin to underside of base.

**8. FOR LARGE FLOWER** – Pin two BASE (8) sections with WRONG sides together. Stitch 1/4" (6mm) from raw edge. Finish by zigzag stitching close to raw edge or overlock stitching over raw edge.

**9.** On OUTSIDE, pin one petal section to base, placing seamline along the inner placement line, pulling up gathering stitches to fit, and distributing gathers evenly. Baste; stitch.

**10.** On OUTSIDE, pin another petal section to base, placing seamline along the outer placement line with petals extending beyond the base, pulling up gathering stitches to fit, and distributing gathers evenly. Baste; stitch.

**11.** Hand-sew two bar pins to underside of base. Pin flowers to dress as shown on envelope.



# Congrats!

You've completed your sewing adventure

---

## SHARE YOUR LOOK



Post your pattern and tag us using [#simplicitypatterns](#)  
[@simplicity\\_creative\\_group](#)  
[@simplicitymccallsuk](#)  
[@simplicitymccallsaustralia](#)  
for a chance to be featured on our social media.

Look for more PDF patterns at [simplicity.com](#) or for customers outside the U.S. and Canada visit [sewdirect.com](#) and [sewdirect.com.au](#)

Have a question or need help with your sewing project contact us:  
[Simplicity.com](#)    [Sewdirect.com](#)    [Sewdirect.com.au](#)

**Simplicity**  
by design