

S3098

Simplicity®



A



B



C



MISSES' DRESS WITH SLEEVE AND LENGTH VARIATIONS Average

Suggested Fabrics: Cotton Blends, Linen Blends, Poplin, Shirting Fabric. **C:** Vertical Stripes. **Interfacing:** Lightweight Fusible.

Notions: A,B: Fourteen 5/8" (1.5cm) buttons. C: Sixteen 5/8" (1.5cm) buttons.

Sizes	6	8	10	12	14	16	18	20	22	24
European	32	34	36	38	40	42	44	46	48	50

BODY MEASUREMENTS: Select pattern size based on body measurements

Bust	30½	31½	32½	34	36	38	40	42	44	46	Ins.
Waist	23	24	25	26½	28	30	32	34	37	39	"
Hip-9" below waist	32½	33½	34½	36	38	40	42	44	46	48	"
Back-neck to waist	15½	15¾	16	16¼	16½	16¾	17	17¼	17½	17¾	"

Dress A	45**	3%	4	4	4¼	4¼	4½	4½	4½	4½	4¾	Yds.
60**	2¾	2%	2%	2%	2¼	2¼	2½	2½	2½	2½	2¾	"

Interfacing 20" - 1½ yds.

Dress B	45**	4	4¼	4¼	4¼	4½	5	5	5½	5½	5¾	Yds.
60**	3%	3%	3%	3%	3¼	3¼	3½	3½	3½	3½	3¾	"

Interfacing 20" - 1½ yds.

Dress C	45**	5%	5%	5%	6	6	6¼	6¼	6¼	6¼	6¾	Yds.
60**	4%	4%	4%	4½	4¾	4¾	4¾	4¾	4¾	4¾	4¾	"

Interfacing 20" - 1½ yds.

FINISHED GARMENT MEASUREMENTS (Includes Design and Wearing Ease)

A,B,C Bust	34½	35½	36½	38	40	42	44	46	48	50	Ins.
A,B,C Waist	26½	27½	28½	30	32	34	36	38	40	42	"
Width, lower edge											
Dress A,B	84	85	86	87½	89½	91½	93½	95½	97½	99½	Ins.
Finished back length from base of neck											
Dress A,B	38½	38¾	39	39¼	39½	39¾	40	40¼	40½	40¾	Ins.
Dress C	50½	50¾	51	51¼	51½	51¾	52	52¼	52½	52¾	"

*with nap **without nap

Moins Facile

ROBE AVEC VARIATIONS DE MANCHE ET LONGUEUR POUR JEUNES FEMMES

Tissus Conseillés: Cotonnades, Lin mélangés, Popeline, Tissu pour chemise. **C:** Rayures verticales. **Entoilage:** Thermocollant léger.

Mercerie: A,B: 14 boutons de 1.5cm. C: 16 boutons de 1.5cm.

Tailles	6	8	10	12	14	16	18	20	22	24
Françaises	34	36	38	40	42	44	46	48	50	52
Européen	32	34	36	38	40	42	44	46	48	50

MESURES DU CORPS: Choisissez la taille du patron basée sur les mesures du corps

Poitrine	78	80	83	87	92	97	102	107	112	117	cm
Taille	58	61	64	67	71	76	81	87	94	99	"
Hanches (23cm au-dessous de la taille)	83	85	88	92	97	102	107	112	117	122	cm
Dos du cou à la taille	39.5	40	40.5	41.5	42	42.5	43	44	44	44.5	"

Robe A	115cm*	3.5	3.7	3.7	3.7	3.8	4.1	4.2	4.2	4.3	4.3	m
150cm*	2.5	2.5	2.6	2.6	3.0	3.0	3.0	3.0	3.0	3.1	"	

Entoilage 51cm - 1.6m

Robe B	115cm*	3.7	3.8	3.9	4.0	4.1	4.6	4.6	4.6	4.7	4.9	m
150cm*	2.7	2.9	2.9	2.9	2.9	3.0	3.1	3.3	3.3	3.4	"	

Entoilage 51cm - 1.4m

Robe C	115cm*	5.4	5.4	5.4	5.5	5.5	5.6	5.7	6.1	6.1	6.1	m
150cm*	4.0	4.0	4.0	4.1	4.3	4.3	4.3	4.3	4.3	4.5	"	

Entoilage 51cm - 1.5m

MESURES DES VÊTEMENTS FINI (Motif et aisance de port compris)

A,B,C Poitrine	88	90	93	97	102	107	112	117	122	127	cm
A,B,C Taille	67	70	72	76	81	86	91	97	102	107	"
Largeur à l'ourlet											
Robe A,B	213	216	218	222	227	232	237	243	248	253	cm
Longueur finie – dos, votre nuque à l'ourlet											
Robe A,B	98	98	99	100	100	101	102	102	103	104	cm
Robe C	128	129	130	130	131	131	132	133	133	134	"

*avec sens **sans sens



A



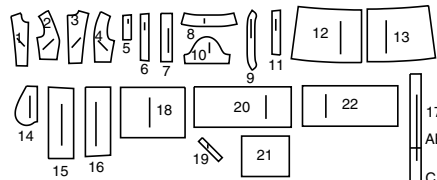
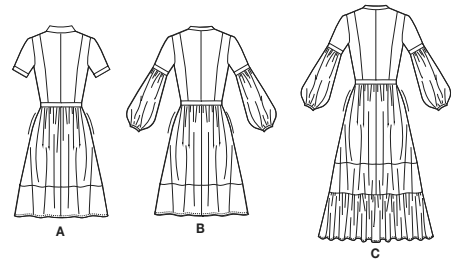
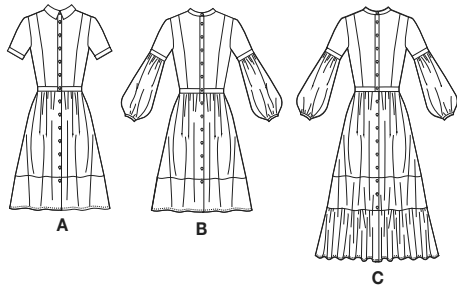
B



C

Simplicity

Thank you for purchasing this Simplicity pattern. We made every effort to provide you with a high quality product.



- 1 Bodice Front-A,B,C
- 2 Bodice Side Front-A,B,C
- 3 Bodice Back-A,B,C
- 4 Bodice Side Back-A,B,C
- 5 Midriff Front-A,B,C
- 6 Midriff Back-A,B,C
- 7 Placket-A,B,C
- 8 Collar-A
- 9 Collar Band-A,B,C
- 10 Sleeve-A,B,C
- 11 Sleeve Band-A,B,C
- 12 Skirt Front-A,B,C
- 13 Skirt Back-A,B,C
- 14 Pocket-A,B,C
- 15 Skirt Front Band-A,B,C
- 16 Skirt Back Band-A,B,C
- 17 Skirt Front Facing-A,B,C
- 18 Lower Sleeve-B,C
- 19 Sleeve Binding-B,C
- 20 Front Ruffle-C
- 21 Back Ruffle-C
- 22 Side Ruffle-C

General Directions

The Pattern

SYMBOLS

- GRAIN LINE Place on straight grain of fabric parallel to selvage
- PLACE SOLID LINE on fold of fabric.
- CENTER FRONT OR BACK of garment.
- NOTCHES
- DOTS
- CUTTING LINE
- LENGTHEN OR SHORTEN LINES

ADJUST IF NEEDED

TO LENGTHEN: Cut pattern between lengthen or shorten lines. Spread pattern evenly, the amount needed and tape to paper.

TO SHORTEN: At lengthen or shorten lines, make an even pleat taking up amount needed. Tape in place.

SEAM ALLOWANCE: 5/8" (1.5cm) unless otherwise stated is included but not printed on MULTI-SIZE PATTERNS. Mark your size with colored felt tip pen. See chart on tissue for how to use MULTI-SIZE PATTERNS.

SEWING: Sew garment following Sewing Directions. PIN or machine-baste seams matching notches. STITCH 5/8" (1.5 cm) seams unless otherwise stated. PRESS seams open unless otherwise indicated clipping when necessary so seams will lie flat. TRIM seams to reduce bulk, as shown below.

When lengthen or shorten lines are not given, make adjustments at lower edge of pattern.

Cutting/Marking

BEFORE CUTTING: PRESS pattern pieces with a warm dry iron. PRE-SHRINK fabric by pre-washing washables or steam-pressing non-washables. CIRCLE your cutting layout. PIN pattern to fabric as shown in Cutting Layouts.

AFTER CUTTING: Transfer markings to WRONG side of fabric before removing pattern. Use pin and chalk method or dressmaker's tracing paper and wheel.

To Quick Mark:

- Snip edge of fabric to mark notches, ends of fold lines and center lines.
- Pin mark dots.

SPECIAL CUTTING NOTES

★ If layout shows a piece extending past fold, cut out all pieces except piece that extends.

✱ Mark small arrows along both selvages indicating direction of nap or design. Fold fabric crosswise with RIGHT sides together, and cut along fold (a).

Turn one fabric layer around so arrows on both layers go in the same direction. Place RIGHT sides together (b).

Cutting Layouts

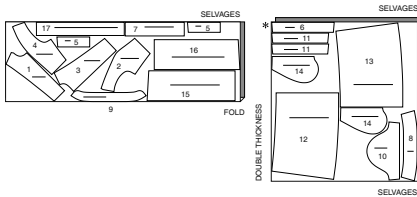
WRONG SIDE OF FABRIC, RIGHT SIDE OF FABRIC, PATTERN PIECE WITH PRINTED SIDE UP, PATTERN PIECE WITH PRINTED SIDE DOWN. SEE SPECIAL CUTTING NOTES.

POSITION OF PATTERN PIECES MAY VARY SLIGHTLY ACCORDING TO YOUR PATTERN SIZE

DRESS A

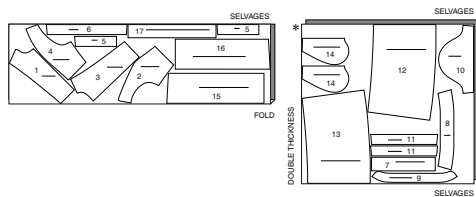
USE PIECES 1 2 3 4 5 6 7 8 9 10 11 12 13 14 15 16 17

45" (115CM) WITH NAP / SIZES 6 8 10 12 14

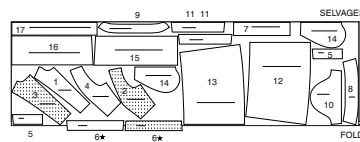


45" (115CM)

WITH NAP SIZES 16 18 20 22 24

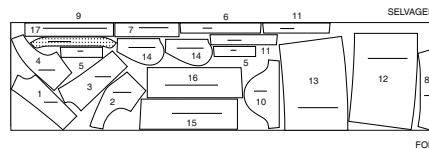


60" (150CM) WITH NAP SIZES 6 8 10 12



60" (150CM)

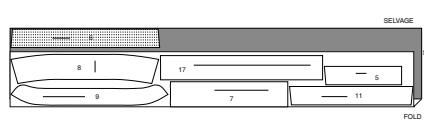
WITH NAP SIZES 14 16 18 20 22 24



INTERFACING A

USE PIECES 5 6 7 8 9 11 17

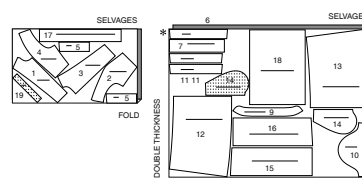
20" (51CM) ALL SIZES



DRESS B

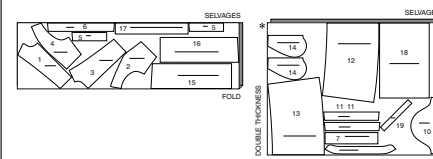
USE PIECES 1 2 3 4 5 6 7 9 10 11 12 13 14 15 16 17 18 19

45" (115CM) WITH NAP / SIZES 6 8 10 12 14

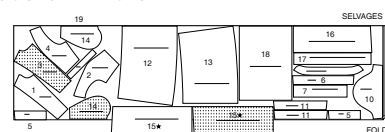


45" (115CM)

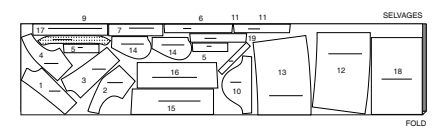
WITH NAP SIZES 16 18 20 22 24



60" (150CM) WITH NAP SIZES 6 8 10 12 14 16 18



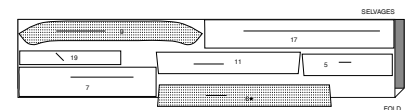
60" (150CM) WITH NAP SIZES 20 22 24



INTERFACING B

USE PIECES 5 6 7 9 11 17

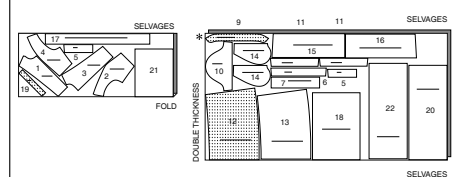
20" (51CM) ALL SIZES



DRESS C

USE PIECES 1 2 3 4 5 6 7 9 10 11 12 13 14 15 16 17 18 19 20 21 22

45" (115CM) WITH NAP / SIZES 6 8 10 12 14 16 18

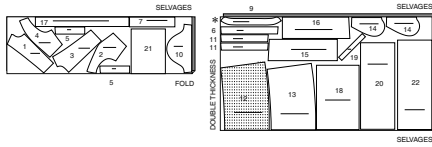


CUTTING LAYOUTS CONTINUED ON PAGE 2

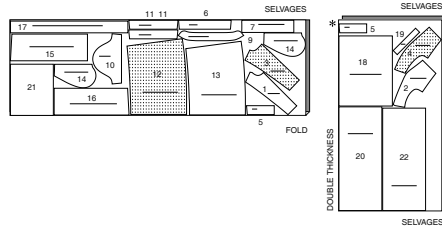
S3098

2 of 4

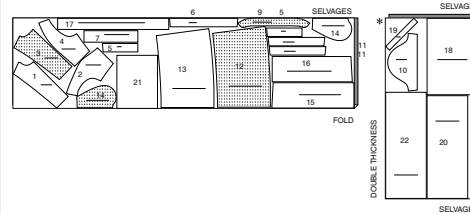
45" (115CM)
WITH NAP
SIZES 20 22 24



60" (150CM)
WITH NAP
SIZES 6 8 10 12

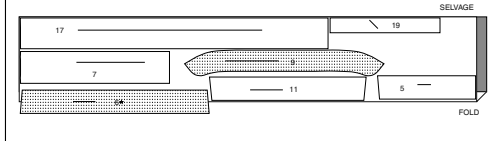


60" (150CM)
WITH NAP
SIZES 14 16 18 20 22 24

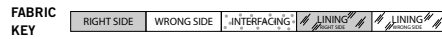


INTERFACING C
USE PIECES 5 6 7 9 11 17 19

20" (51CM)
ALL SIZES



Sewing Directions



Read **General Directions** on page 1 before you begin.
Sewing methods in **BOLD TYPE** have Sewing Tutorial Video available. Scan **QR CODE** to watch videos:
EASE/GATHER – See **Gathering**: "sewing two row gathers" video.
EDGESTITCH – See **Machine Stitches**: "how to sew an edgestitch" video.
NARROW HEM – See **hem**: "how to narrow hem" video.
SET IN SLEEVE – See **Armholes/Sleeves**: "sewing a set in sleeve" video.
STAYSTITCH – See **Machine Stitches**: "how to do stay stitching" video.
STITCH IN THE DITCH – See **Machine Stitches**: "how to stitch in the ditch" video.
TRIM SEAM – See **Seams**: "how to trim, clip and layer seams" video.
UNDERSTITCH – See **Machine Stitches**: "how to understitch" video.

PATTERN PIECES WILL BE IDENTIFIED BY NUMBERS THE FIRST TIME THEY ARE USED.
STITCH 5/8" (1.5CM) SEAMS WITH RIGHT SIDES TOGETHER UNLESS OTHERWISE STATED.

SEWING TUTORIALS

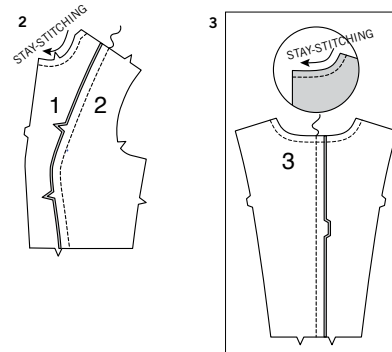


Build your skills viewing short, easy-to-follow videos at simplicity.com/sewingtutorials

DRESS A, B, C

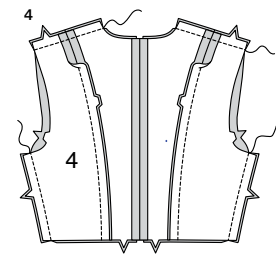
INTERFACING

- Pin interfacing to **WRONG** side of MIDRIFF FRONT (5), MIDRIFF BACK (6), PLACKET (7), COLLAR BAND (9), SLEEVE BAND (11); and for View A, COLLAR (8); or for **View B and C**, SLEEVE BINDING (19). Fuse in place following manufacturer's directions.

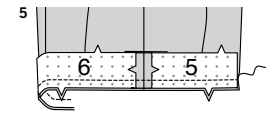


BODICE

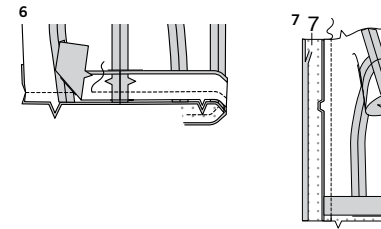
- To **STAYSTITCH** neck edge of **BODICE FRONT** (1), stitch 1/2" (1.3cm) from cut edge in direction of arrows. This stitching stays in permanently to prevent stretching on curved edges. (Shown only in the first illustration.) With **RIGHT** sides together and raw edges even, pin bodice front to **BODICE SIDE FRONT** (2), matching notches. Stitch.
- To **STAYSTITCH** neck edge of **BODICE BACK** (3), stitch 1/2" (1.3cm) from cut edge in direction of arrows. This stitching stays in permanently to prevent stretching on curved edges. (Shown only in the first illustration.) Stitch center back edges together, matching notches.



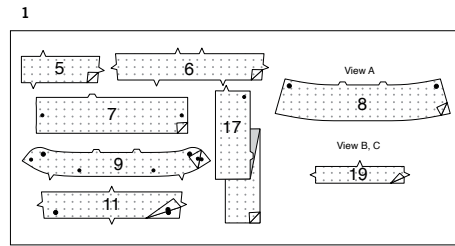
- With **RIGHT** sides together and raw edges even, pin bodice back to **BODICE SIDE BACK** (4) sections, matching notches. Stitch. Stitch bodice front to bodice back at shoulder and side edges.

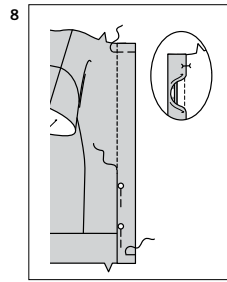


- Stitch **MIDRIFF FRONT** (5) to **MIDRIFF BACK** (6) at side edges. With **RIGHT** sides together and raw edges even, pin upper edge of midriff to lower edge of bodice, matching seams and notches. Stitch.

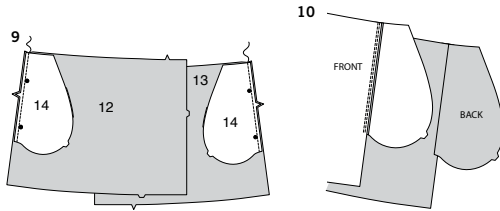


- Stitch ends of midriff facing. Press under 1/2" (1.3cm) on lower edge. Trim to 1/4" (6mm). Pin **RIGHT** side of midriff facing to **WRONG** side of bodice, matching seams and notches. Stitch.
- Press midriff and facing out. Press under 1/2" (1.3cm) on unmarked edge of **PLACKET** (7). Trim to 1/4" (6mm). With **RIGHT** sides together and raw edges even, pin placket to bodice front and midriff, matching notches. Stitch. Press seam toward placket, pressing placket out.





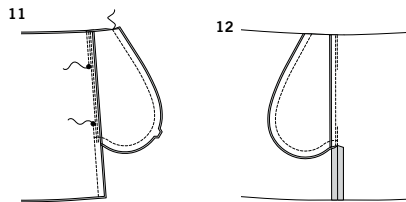
- 8.** Turn placket to **INSIDE** along fold line; press. Pin inner pressed edge of placket over seam, placing pins on **OUTSIDE**. On **OUTSIDE**, **STITCH IN THE DITCH** of the seam, catching in pressed edge of placket on the **INSIDE**. Baste raw edges together.



SKIRT

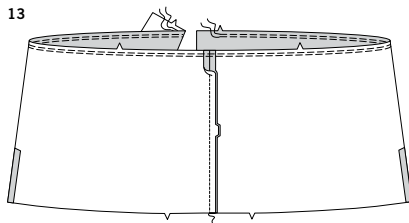
- 9.** With **RIGHT** sides together, pin **POCKET** (14) to **SKIRT FRONT** (12) and **SKIRT BACK** (13) sections, matching large dots, having raw edges even. Stitch in $3/8"$ (1 cm) seam.

- 10.** **UNDERSTITCH** the front pocket. Press seam toward pockets, pressing pockets out.

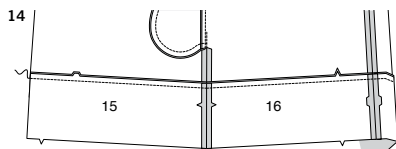


- 11.** Pin skirt front to skirt back at side seams, matching large dots. Stitch side seams, leaving an opening between large dots. Stitch pocket edges together from side seam to upper edge.

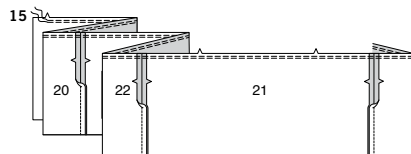
- 12.** Clip skirt back seam allowance below pocket. Press seam open below clip. Press pocket toward front.



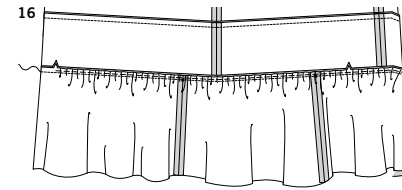
- 13.** Stitch center back edges of skirt back. To **GATHER** upper edge of skirt between front notches, loosen needle tension slightly. On **OUTSIDE**, stitch $5/8"$ (1.5 cm) from cut edge using a long stitch, breaking stitching at pocket. Stitch again $1/4"$ (6 mm) from the first stitching within the seam allowance.



- 14.** Stitch **SKIRT FRONT BAND** (15) to **SKIRT BACK BAND** (16) at side edges. Stitch center back edges of skirt back band. With **RIGHT** sides together and raw edges even, pin upper edge of skirt band to lower edge of skirt, matching centers, seams and notches. Stitch. Press seam toward skirt.

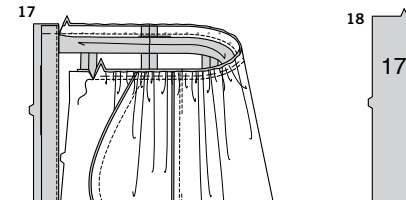


- 15.** **FOR VIEW C** – Stitch **SKIRT SIDE RUFFLE** (22), to **SKIRT FRONT RUFFLE** (20) and **BACK RUFFLE** (21) at ends. **GATHER** upper edge between the front notches.

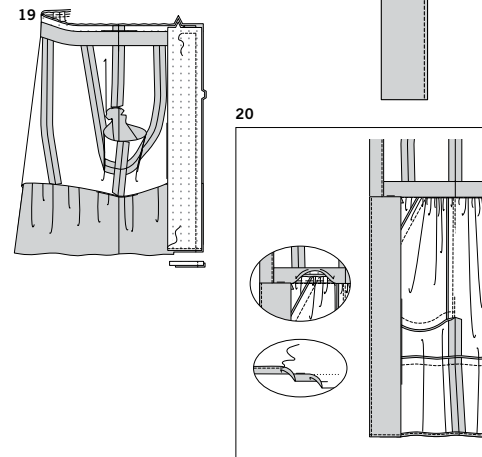


- 16.** With **RIGHT** sides together and raw edges even, pin ruffle to band, matching centers and notches, placing seams at small dots, and pulling up gathering stitches to fit. Stitch. Press seam toward band, pressing ruffle out.

CONTINUE AS FOLLOWS FOR ALL VIEWS



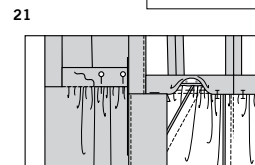
- 17.** With **RIGHT** sides together and raw edges even, pin skirt to bodice, matching centers, seams, and notches, pulling up gathering stitches to fit. (Skirt front will extend $5/8"$ (1.5 cm) beyond placket finished edge.)
Stitch, being careful not to catch in pressed edge of midriff facing. Clip seam allowance to stitching at inner edge of placket.



- 18.** To finish long unnotched edge of **SKIRT FRONT FACING** (17), stitch $1/4"$ (6 mm) from edge, turn under edge along stitching and stitch, or zigzag stitch, or overlock stitch raw edges.

- 19.** With **RIGHT** sides together and raw edges even, pin facing to skirt (over bodice), matching notches. Stitch front edge. Stitch upper edge, being careful not to catch in midriff facing. Stitch across lower edge. Trim lower edge of facing close to stitching. Trim skirt to within $5/8"$ (1.5 cm) of inner edge of facing.

- 20.** **UNDERSTITCH** the facing. Turn facing to **INSIDE**; press, pressing waistline seam toward bodice, and pressing under $5/8"$ (1.5 cm) hem allowance. To form a **NARROW HEM** tuck under raw edge to meet crease. Press. Stitch close to inner pressed edge.



- 21.** On **INSIDE**, pin pressed edge of midriff facing over seam, placing pins on **OUTSIDE**. On **OUTSIDE**, **STITCH IN THE DITCH** of the seam, catching in pressed edge of midriff facing on the **INSIDE**.

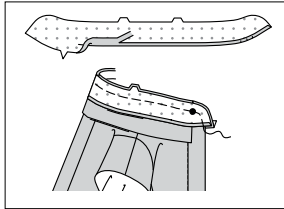
COLLAR A

- 22.** Clip neck edge of dress to staystitching. With **RIGHT** sides together, pin single notched edge of **COLLAR BAND** (9) to neck edge, matching centers back and small dots, placing inner small dots at shoulder seams. (Collar band extends $5/8"$ (1.5 cm) beyond front opening edges.) Stitch neck edge. **TRIM SEAM**. Press band out; press seam toward band.

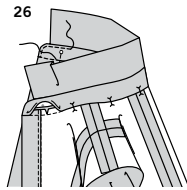
- 23.** With **RIGHT** sides together and raw edges even, stitch facing to **COLLAR** (8), leaving notched edges open. **TRIM SEAM**.

- 24.** Turn collar; press. Machine-baste raw edges together. With **RIGHT** sides together and raw edges even, pin collar to collar band, matching centers back and double notches and placing ends at large dots. Machine-baste.

25



26

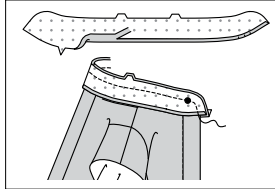


25. Press under a scant 5/8" (1.5cm) on single notched edge of collar band facing; trim to 1/4" (6mm). With RIGHT sides together, pin collar band facing to collar band (over collar), matching centers. Stitch front and double notched edge. **TRIM SEAM.**

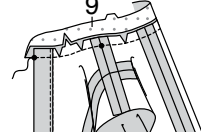
26. Turn band facing to INSIDE; press. Pin pressed edge of facing over seam, placing pins on OUTSIDE. On OUTSIDE, **STITCH IN THE DITCH** of the seam, catching in pressed edge of facing on INSIDE. **EDGESTITCH** upper and front edge of collar band.

COLLAR BAND B, C

28



27



27. Clip dress neck edge to staystitching. With RIGHT sides together, pin COLLAR BAND (9) to neck edge, matching centers back and small dots, placing inner small dots at shoulder seams. (Collar band extends 5/8" (1.5cm) beyond front opening edges.) Stitch neck edge. **TRIM SEAM.** Press band out; press seam toward band.

28. Press under a scant 5/8" (1.5cm) on single notched edge of collar band facing; trim to 1/4" (6mm). With RIGHT sides together, pin collar band facing to collar band, matching centers. Stitch front and double notched edge. **TRIM SEAM.**

29. Turn collar band facing to INSIDE; press. Pin pressed edge of facing over seam, placing pins on OUTSIDE. On OUTSIDE, **STITCH IN THE DITCH** of the seam, catching in pressed edge of facing on INSIDE.

SLEEVE A

30. To **EASE** top of SLEEVE (10) between the notches, loosen needle tension slightly. On OUTSIDE, stitch 5/8" (1.5cm) from cut edge using a long stitch. Stitch again 1/4" (6mm) from the first stitching within the seam allowance. Stitch underarm edges of sleeve.

31. Stitch notches ends of SLEEVE BAND (11). With RIGHT sides together and raw edges even, pin sleeve band to sleeve, matching seams and notches. Stitch. Press seam toward band, pressing band out.

32. Stitch notched ends of sleeve band facing. Press under a scant 5/8" (1.5cm) on upper notched edge. With raw edges even, pin facing to band, matching seams and notches. Stitch.

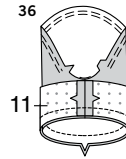
33. **UNDERSTITCH** the band facing. Turn facing to INSIDE; press. Pin pressed edge of facing over seam, placing pins on OUTSIDE. On OUTSIDE, **STITCH IN THE DITCH** of the seam catching in pressed edge of facing on the INSIDE.

34. To **SET IN SLEEVE**, turn sleeve RIGHT side out. Hold dress WRONG side out with armhole toward you. With RIGHT sides together, pin sleeve to armhole edge with center small dot at shoulder seam, matching underarm seams, notches and remaining small dots. Pull up ease stitches to fit. To distribute fullness evenly, slide fabric along bobbin threads until there are no puckers or tucks on the seam line. Baste. Stitch. Stitch again 1/8" (3mm) from first stitching. Trim seam below notches close to stitching. Press only the seam allowance, shrinking out fullness.

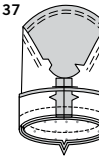
SLEEVE B, C

35. To **EASE** top of SLEEVE (10) between the notches, loosen needle tension slightly. On OUTSIDE, stitch 5/8" (1.5cm) from cut edge using a long stitch. Stitch again 1/4" (6mm) from the first stitching within the seam allowance. Stitch underarm edges of sleeve.

36



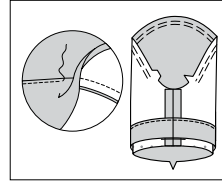
37



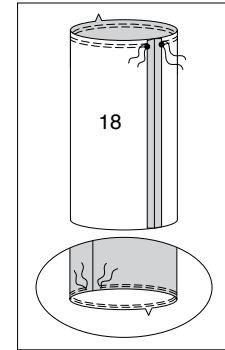
36. Stitch notches ends of SLEEVE BAND (11). With RIGHT sides together and raw edges even, pin sleeve band to sleeve, matching seams and notches. Stitch.

37. Stitch notched ends of sleeve band facing. Press under a scant 5/8" (1.5cm) on lower notched edge. Trim to 1/4" (6mm). Pin RIGHT side of facing to WRONG side of sleeve, matching seams and notches. Stitch.

38



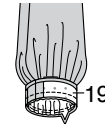
39



38. **UNDERSTITCH** the band facing. Press band out.

39. **GATHER** upper edge of LOWER SLEEVE (18) between the large dots. Stitch underarm edges. To **GATHER** lower edge of upper sleeve, loosen needle tension slightly. On OUTSIDE, stitch 3/8" (1cm) from cut edge using a long stitch. Stitch again 1/8" (3mm) from the first stitching within the seam allowance.

40

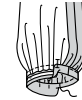


19

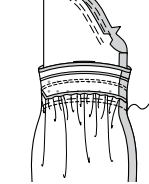
40. Stitch ends of SLEEVE BINDING (19). Press under a generous 1/4" (6mm) on unnotched edge. With RIGHT sides together and raw edges even, pin binding to sleeve, matching seams and notches, pulling up gathering stitches to fit. Stitch in a 3/8" (1cm) seam.

41. Press seam toward binding, pressing binding out. Pin pressed edge of binding over seam, placing pins on OUTSIDE. On OUTSIDE, **STITCH IN THE DITCH** of the seam catching in pressed edge of binding on the INSIDE.

41

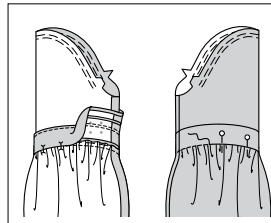


42

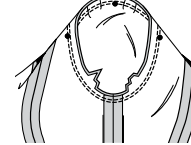


42. With RIGHT sides together and raw edges even, pin lower sleeve to sleeve band, matching seams, large dots, and notches, pulling up gathering stitches to fit. **TRIM SEAM.** Press seam toward band, pressing sleeve out.

43



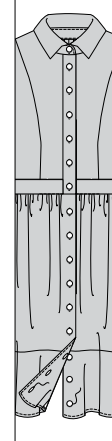
44



43. Pin pressed edge of band facing over seam, placing pins on OUTSIDE. On OUTSIDE, **STITCH IN THE DITCH** of the seam catching in pressed edge of band facing on the INSIDE.

44. To **SET IN SLEEVE**, turn sleeve RIGHT side out. Hold dress WRONG side out with armhole toward you. With RIGHT sides together, pin sleeve to armhole edge with center small dot at shoulder seam, matching underarm seams, notches and remaining small dots. Pull up ease stitches to fit. To distribute fullness evenly, slide fabric along bobbin threads until there are no puckers or tucks on the seam line. Baste. Stitch. Stitch again 1/8" (3mm) from first stitching. Trim seam below notches close to stitching. Press only the seam allowance, shrinking out fullness.

45

**FINISHING**

45. Make buttonholes in RIGHT front and collar band at markings. Sew buttons to LEFT front under buttonholes.



Congrats!

You've completed your sewing adventure

SHARE YOUR LOOK



Post your pattern and tag us using [#simplicitypatterns](#)
[@simplicity_creative_group](#)
[@simplicitymccallsuk](#)
[@simplicitymccallsaustralia](#)
for a chance to be featured on our social media.

Look for more PDF patterns at [simplicity.com](#) or for customers outside the U.S. and Canada visit [sewdirect.com](#) and [sewdirect.com.au](#)

Have a question or need help with your sewing project contact us:
[Simplicity.com](#) [Sewdirect.com](#) [Sewdirect.com.au](#)

Simplicity
by design