

S3097

Simplicity



A



B



C



Average

MISSES' DRESS WITH LENGTH AND SLEEVE VARIATIONS

Suggested Fabrics: Broadcloth, Gabardine, Poplin, Stable Knits, Suiting Fabrics, Wool Blends. **Interfacing:** Lightweight Fusible.

Notions: A,B: One 22" (56cm) invisible zipper, one pkg. of 1/2" (1.3cm) single fold bias tape. C: One 22" (56cm) zipper.

Sizes	8	10	12	14	16	18	20	22	24	26
European	34	36	38	40	42	44	46	48	50	52

BODY MEASUREMENTS: Select pattern size based on body measurements

Bust	31½	32½	34	36	38	40	42	44	46	48	Ins.
Waist	24	25	26½	28	30	32	34	37	39	41½	"
Hip-9" below waist	33½	34½	36	38	40	42	44	46	48	50	"
Back-neck to waist	15¾	16	16¼	16½	16¾	17	17¼	17½	17¾	17¾	"

Dress A	45**	3%	3%	3¾	3¾	3¾	3%	4%	4%	4%	4%	Yds.
	60**	2¾	2¾	2¾	2¾	2¾	2%	3	3	3	3¾	"

Interfacing A,B

20" - ¾ yd.

Dress B	45**	5¼	5¼	5¼	5¼	5¼	5¼	6%	6%	6%	6%	Yds.
	60**	4¾	4¾	4¾	4¾	4¾	4%	5	5	5	5½	"

Dress C	45**	4¾	4¾	4¾	5	5¼	5¼	6%	6¾	6¾	6¾	Yds.
	60**	4¾	4¾	4¾	4¾	4¾	4¾	4%	4%	4%	4%	"

Interfacing 20" - ¾ yd.

FINISHED GARMENT MEASUREMENTS (Includes Design and Wearing Ease)

A,B,C Bust	34	35	36¾	38¾	40¾	42¾	44¾	46¾	48¾	50½	Ins.
A,B,C Waist	28	29	30¾	32¾	34¾	36¾	38¾	40¾	42¾	44¾	"
A,B,C Hip	48¾	49¾	51	53	55	57	59	61	63	65	"
Width, lower edge											
Dress A	86½	87½	89	91	93	95	97	99	101	103	Ins.
Finished back length from base of neck											
Dress A	38¾	39	39¾	39¾	39¾	40	40¾	40¾	40¾	41	Ins.
Dress B,C	50%	50¾	51	51¼	51¼	51¾	52	52¼	52¼	52¾	"

*with nap **without nap

Moins Facile

ROBE AVEC VARIATIONS DE LONGUEUR ET MANCHE POUR JEUNES FEMMES

Tissus Conseillés: Broadcloth, Gabardine, Popeline, Tricot stables, Tissus pour costumes, Lainages. **Entoilage:** Thermocollant léger.

Merci: A,B: 1 fermeture à glissière invisible de 56cm, 1 paquet de ruban de biais simple de 1.3cm. C: 1 fermeture à glissière de 56cm.

Tailles	8	10	12	14	16	18	20	22	24	26
Françaises	36	38	40	42	44	46	48	50	52	54
Européen	34	36	38	40	42	44	46	48	50	52

MESURES DU CORPS: Choisissez la taille du patron basée sur les mesures du corps

Poitrine	80	83	87	92	97	102	107	112	117	122	cm
Taille	61	64	67	71	76	81	87	94	99	106	"
Hanches (23cm au-dessous de la taille)	85	88	92	97	102	107	112	117	122	127	cm
Dos du cou à la taille	40	40.5	41.5	42	42.5	43	44	44	44.5	44.5	"

Robe A	115cm*	3.3	3.3	3.4	3.4	3.4	3.4	3.8	3.9	3.9	3.9	m
	150cm*	2.5	2.5	2.5	2.5	2.5	2.6	2.7	2.7	2.9	"	

Entoilage A,B

51cm - 0.6m

Robe B	115cm*	4.8	4.8	4.8	4.9	4.9	4.9	5.7	5.9	6.1	6.1	m
	150cm*	4.3	4.3	4.3	4.3	4.5	4.5	4.5	4.6	4.6	4.6	"

Robe C	115cm*	4.3	4.5	4.5	4.6	4.8	4.9	6.1	6.2	6.2	6.3	m
	150cm*	4.0	4.0	4.0	4.1	4.1	4.1	4.1	4.1	4.1	4.1	"

Entoilage 51cm - 0.7m

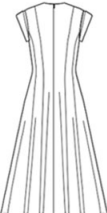
MESURES DES VÊTEMENTS FINI (Motif et aisance de port compris)

A,B,C Poitrine	86	89	93	98	103	108	113	118	123	128	cm
A,B,C Taille	71	74	77	83	88	93	98	103	108	113	"
A,B,C Hanches	123	126	130	135	140	145	150	155	160	165	"
Largeur à l'ourlet											
Robe A	220	222	226	231	236	241	246	251	257	262	cm
Longueur finie – dos, votre nuque à l'ourlet											
Robe A	98	99	100	100	101	102	102	103	104	104	cm
Robe B,C	128	129	130	130	131	131	132	133	133	134	"

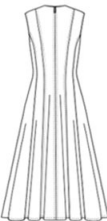
*avec sens **sans sens



A



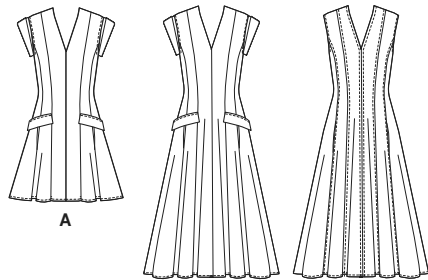
B



C

Simplicity®

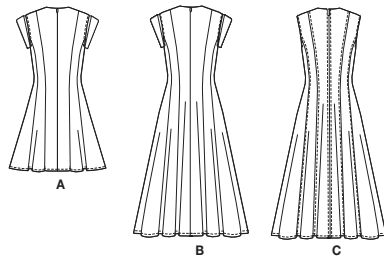
Thank you for purchasing this Simplicity pattern. We made every effort to provide you with a high quality product.



A

B

C

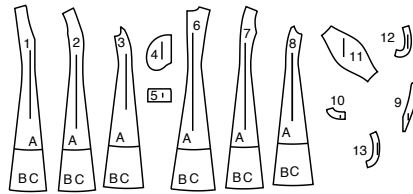


A

B

C

13 PIECES



- 1 Front-A,B,C
- 2 Middle Front-A,B,C
- 3 Side Front-A,B,C
- 4 Pocket-A,B,C
- 5 Flap-A,B
- 6 Back-A,B,C
- 7 Middle Back-A,B,C
- 8 Side Back-A,B,C
- 9 Front Facing-A,B,C
- 10 Back Facing-A,B,C
- 11 Sleeve-A,B
- 12 Front Armhole Facing-C
- 13 Back Armhole Facing-C

General Directions

The Pattern

- SYMBOLS**
- ↔ GRAIN LINE Place on straight grain of fabric parallel to selvage
 - ⇓ PLACE SOLID LINE on fold of fabric.
 - CENTER FRONT OR BACK of garment.
 - ∇ NOTCHES
 - DOTS
 - CUTTING LINE
 - == LENGTHEN OR SHORTEN LINES
- SEAM ALLOWANCE: 5/8" (1.5cm) unless otherwise stated is included but not printed on MULTI-SIZE PATTERNS. Mark your size with colored felt tip pen. See chart on tissue for how to use MULTI-SIZE PATTERNS.

- ADJUST IF NEEDED**
- Make adjustments before placing pattern on fabric.
- TO LENGTHEN:** Cut pattern between lengthen or shorten lines. Spread pattern evenly, the amount needed and tape to paper.
- TO SHORTEN:** At lengthen or shorten lines, make an even pleat taking up amount needed. Tape in place.
- When lengthen or shorten lines are not given, make adjustments at lower edge of pattern.

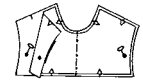
Cutting/Marking

- BEFORE CUTTING:**
- PRESS pattern pieces with a warm dry iron. PRE-SHRINK fabric by pre-washing washables or steam-pressing non-washables.
 - CIRCLE your cutting layout.
 - PIN pattern to fabric as shown in Cutting Layouts.
 - FOR DOUBLE THICKNESS: Fold fabric with RIGHT sides together.
 - FOR SINGLE THICKNESS: Place fabric RIGHT side up.
 - FOR PILE, SHADED OR ONE WAY DESIGN FABRICS: Use "with nap" layouts

AFTER CUTTING:

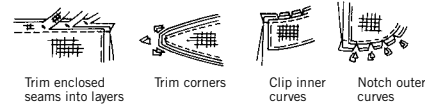
Transfer markings to WRONG side of fabric before removing pattern. Use pin and chalk method or dressmaker's tracing paper and wheel.

- To Quick Mark:**
- Snip edge of fabric to mark notches, ends of fold lines and center lines.
 - Pin mark dots.



Sewing

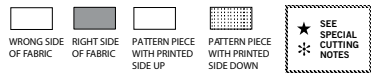
- SEW garment following Sewing Directions.
- PIN or machine-baste seams matching notches.
- STITCH 5/8" (1.5 cm) seams unless otherwise stated.
- PRESS seams open unless otherwise indicated clipping when necessary so seams will lie flat.
- TRIM seams to reduce bulk, as shown below.



SPECIAL CUTTING NOTES

- If layout shows a piece extending past fold, cut out all pieces except piece that extends.
- Mark small arrows along both selvages indicating direction of nap or design. Fold fabric crosswise with RIGHT sides together, and cut along fold (a).
- Turn one fabric layer around so arrows on both layers go in the same direction. Place RIGHT sides together (b).

Cutting Layouts

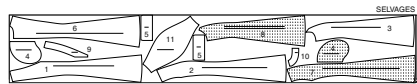


POSITION OF PATTERN PIECES MAY VARY SLIGHTLY ACCORDING TO YOUR PATTERN SIZE

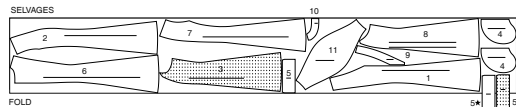
DRESS A

USE PIECES 1 2 3 4 5 6 7 8 9 10 11

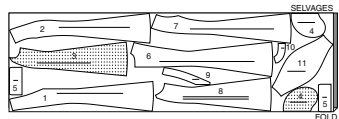
45" (115CM) WITH NAP SIZES 8 10 12 14 16 18



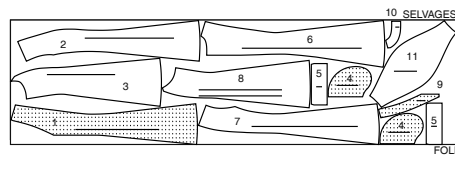
45" (115CM) WITH NAP SIZES 20 22 24 26



60" (150CM) WITH NAP SIZES 8 10 12 14 16 18

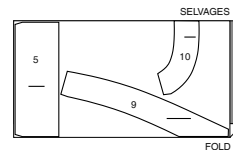


60" (150CM) WITH NAP SIZES 20 22 24 26



INTERFACING A,B

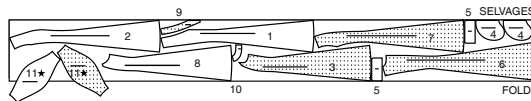
USE PIECES 5 9 10
20" (51CM) WITHOUT NAP ALL SIZES



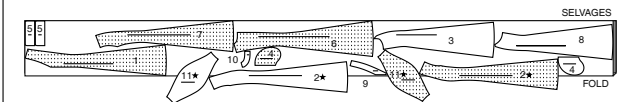
DRESS B

USE PIECES 1 2 3 4 5 6 7 8 9 10 11

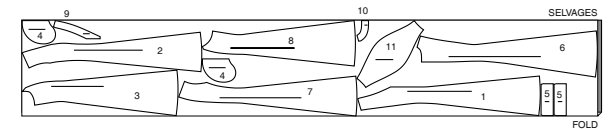
45" (115CM) WITH NAP SIZES 8 10 12 14 16 18



45" (115CM) WITH NAP SIZES 20 22 24 26



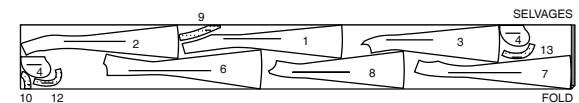
60" (150CM) WITH NAP ALL SIZES



DRESS C

USE PIECES 1 2 3 4 6 7 8 9 10 12 13

45" (115CM) WITH NAP SIZES 8 10 12 14 16 18

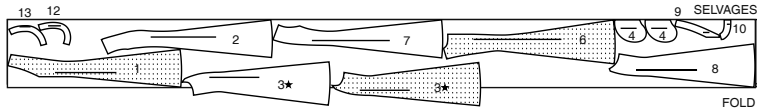


CUTTING LAYOUTS CONTINUED ON PAGE 2

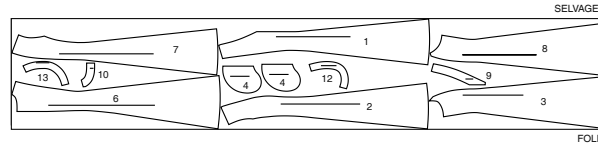
S3097

2 of 4

45" (115CM) WITH NAP
SIZES 20 22 24 26

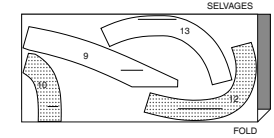


60" (150CM) WITH NAP
ALL SIZES



INTERFACING C
USE PIECES 9 10 12 13

20" (51CM) WITHOUT NAP
ALL SIZES

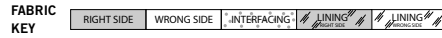


SEWING TUTORIALS



Build your skills viewing short, easy-to-follow videos at simplicity.com/sewingtutorials

Sewing Directions



Sewing methods in **BOLD TYPE** have Sewing Tutorial Video available. Scan **QR CODE** to watch videos:

- EASE** - See **Gathering**: "sewing two row gathers" video.
- FINISH** - See **Seams**: "how to finish seam allowances" video.
- NARROW HEM** - See **Hems**: "sewing narrow hems" video.
- SLIPSTITCH** - Slide needle through a folded edge, then pick up a thread of underneath fabric.
- STAYSTITCH** - See **Machine Stitches**: "how to do staystitching" video.
- TACK** - See **Hand-Stitching**: "how to tack" video.
- TOPSTITCH** - See **Machine Stitches**: "how to topstitch" video.
- TRIM** - See **How to Sew**: **Trim, Clip, and Layer Seams** video.
- UNDERSTITCH** - See **Machine Stitches**: "how to understitch" video.

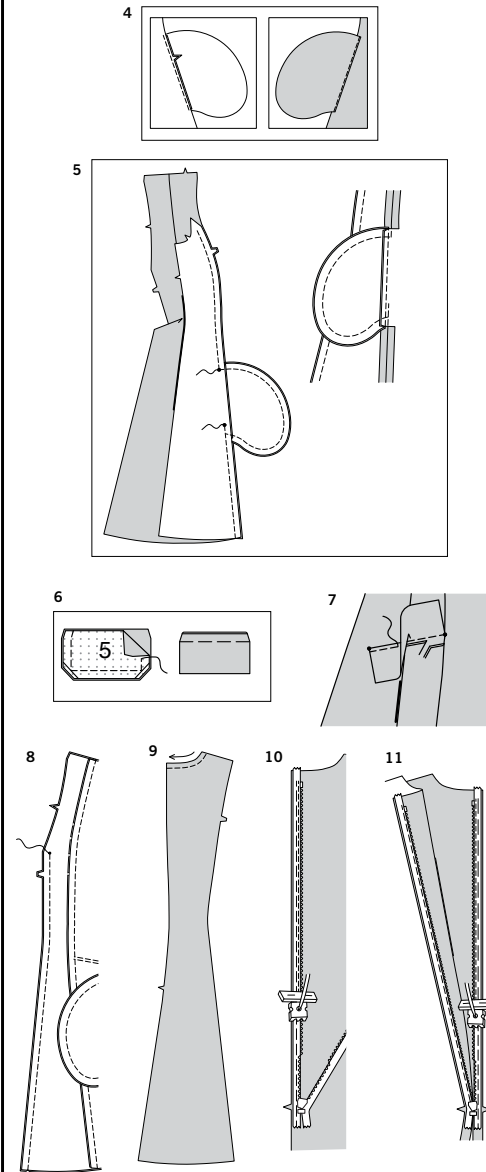
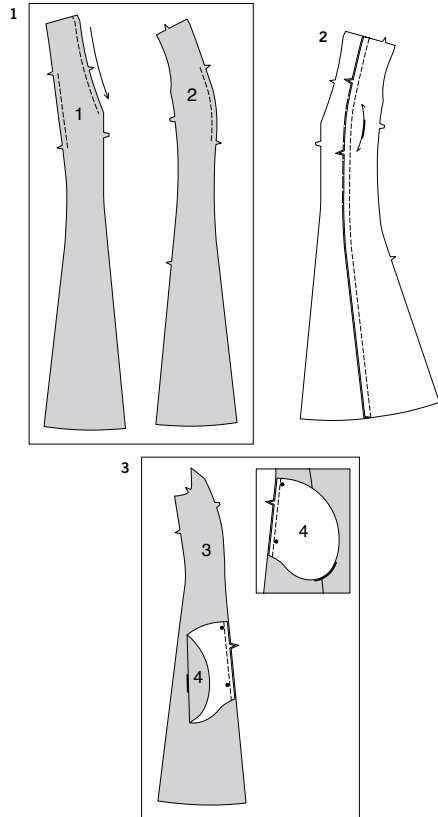
PATTERN PIECES WILL BE IDENTIFIED BY NUMBERS THE FIRST TIME THEY ARE USED.

STITCH 5/8" (1.5cm) SEAMS WITH RIGHT SIDES TOGETHER UNLESS OTHERWISE STATED.

DRESS A, B

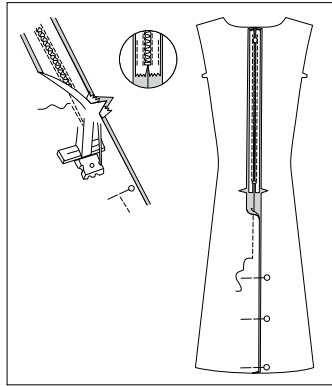
NOTE: The first view mentioned will be illustrated unless otherwise indicated.

- 1. STAYSTITCH** neck edge of **FRONT** (1) in direction of arrows. Stay-stitching stays in permanently to prevent stretching on curved edges. (Shown only in the first illustration). Machine-stitch inner edges of front and **MIDDLE FRONT** (2) between single notches 1/2" (1.3cm) from cut edge.
- 2.** Pin middle front to front, matching single notches, clipping front along curves where necessary. Stitch. Press seam toward center front.
- 3.** With **RIGHT** sides together, pin **POCKET** (4) to inner edges of middle front and **SIDE FRONT** (3) sections, matching large dots. Stitch in a 3/8" (1cm) seam.

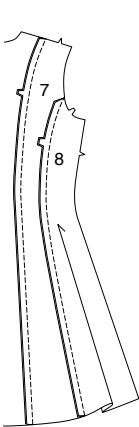


- 4.** Press seam toward pocket, pressing pocket out. **UNDERSTITCH** front pocket by stitching through pocket and seam allowances close to seam.
- 5.** Pin side front to middle front, matching large dots and double notches. Stitch seam, leaving an opening between large dots, back-stitching at large dots to reinforce seam. Stitch pocket edges together between side seams. Clip side front seam allowance above and below pocket. Press seam open, pressing pocket and seam allowances towards middle front.
- 6.** Apply fusible interfacing to **WRONG** side of **FLAP** (5), following manufacturer's directions. With **RIGHT** sides together, stitch facing to flap, leaving edge with small dots open. **TRIM** seam and corners. Turn flap; press. Machine-baste 5/8" (1.5cm) from raw edge.
- 7.** On **OUTSIDE**, pin flap to front, placing basting along flap line, matching small dots, as shown. Stitch along basting. Trim close to stitching. Turn flap down; press. Stitch upper edge of flap 1/4" (6mm) from seam, being careful not to catch in pocket.
- 8.** Pin front sections together, matching small dots. Stitch seam below small dot, back-stitching at small dot to reinforce seam.
- 9. STAYSTITCH** neck edge of **BACK** (6) in direction of arrows. **NOTE:** Stitch the invisible zipper using an invisible zipper foot. If the zipper is longer than the zipper opening, adjust it after the zipper is inserted. For a How-to video, see **ZIPPER: "SEWING AN INVISIBLE ZIPPER"**.
- 10.** Open zipper and press tape using a cool iron. On **OUTSIDE**, pin **RIGHT** side of zipper face down on **RIGHT** side of zipper opening. Have the coil along the seam line, the tape within the seam allowance, and the top stop 3/4" (2cm) below upper edge, as shown. Hand-baste along center of tape. Position zipper foot at top of zipper with **RIGHT** groove of foot over coil. Stitch along tape to the notch. Back-stitch to reinforce.
- 11.** Pin remaining half of zipper to the **LEFT** side of the zipper opening in same manner. Make sure upper and lower edges of dress are even. Hand-baste along center of tape. Position zipper foot at the top of the zipper with **LEFT** groove over the coil. Stitch along tape to notch. Back-stitch to reinforce.

12



13



12. Close zipper and check that it is invisible from the OUTSIDE. Pull free ends of zipper tape away from seam allowance. Pin remaining center back seam together below zipper. Position zipper foot all the way to the LEFT so the needle goes down through the outer notch of the foot. Start stitching seam 1/4" (6mm) above lowest stitch and slightly to the LEFT. Stitch seam for about 3" (7.5cm). Stitch remainder of seam using your regular presser foot.

13. Pin MIDDLE BACK (7) to back, matching double notches; stitch. Press seam toward center back. Pin SIDE BACK (8) to middle back, matching triple notches. Stitch. Press seam toward middle back.

14. Stitch back to front at shoulder seams.

15. Apply fusible interfacing to WRONG side of FRONT FACING (9) and BACK FACING (10) sections. Stitch shoulder seams of facing sections. Stitch center front seam below small dot, backstitching at small dot. **FINISH** unnotched edge.

16. Open out center back opening edges of dress rolling zipper teeth away from opening edge. With RIGHT sides together, pin facing to neck edge, matching centers, shoulder seams, and small dots. Stitch, breaking and reinforcing stitches at small dots. **TRIM** seam; clip curves.

17. Pin back opening edges together. Using an adjustable zipper foot, stitch 1/2" (1.3cm) from back edges, keeping zipper teeth free. Trim corners. Do not trim center back edges.

18. **UNDERSTITCH** by pressing facing and seam away from dress, stitching through facing and seam allowances close to seam as far as possible. Turn facing and back edges to INSIDE, rolling zipper teeth back in place; press. **TACK** facing to seam allowances at shoulders and center front.

19. Stitch back to front at sides.

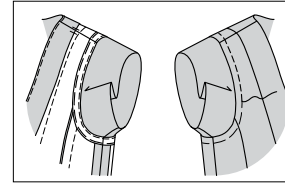
20. Stitch underarm seam of each SLEEVE (11).

21. Fold sleeve along foldline with WRONG sides together, matching underarm seams. Lightly press. Baste raw edges together. To **EASE** sleeve between outer small dots, stitch along seam line and 1/4" (6mm) INSIDE seam line, using a long machine-stitch.

22. On OUTSIDE, pin sleeve to armhole edge, placing inner small dot at shoulder seam, matching notches and remaining small dots. Pull up ease stitches to fit; baste.

23. Open out one edge of single fold bias tape. With RIGHT sides together, pin tape to armhole edge (over sleeve), having crease 5/8" (1.5cm) from raw edge, turning under and lapping one end at side seam. Stitch. **TRIM** seam; clip curves. **UNDERSTITCH** by stitching through tape and seam allowances close to seam.

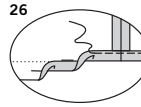
24



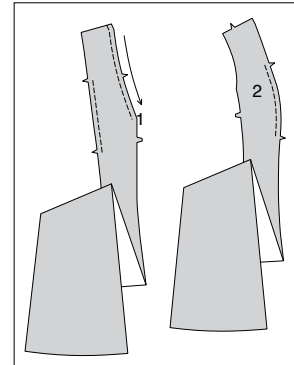
25



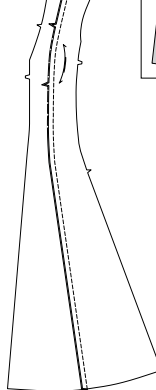
26



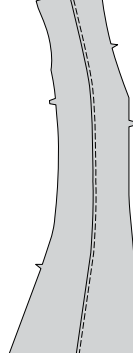
1



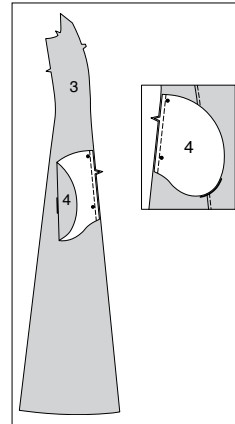
2



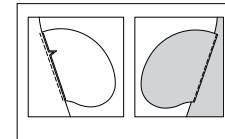
3



4



5



24. Turn tape to INSIDE; press, pressing out sleeve. Baste close to inner edge of tape. On OUTSIDE, stitch as basted; remove basting.

25. On OUTSIDE, turn sleeve up forming a cuff, having fold edge approximately 3/8" (1cm) over armhole seam. Invisibly **TACK UNDERSIDE** of sleeve to shoulder and underarm seam of dress. Lightly press, being careful not to flatten fold edge.

26. Press under 5/8" (1.5cm) hem allowance on lower edge of dress. To form **NARROW HEM**, tuck under raw edge to meet crease; press. Stitch close to inner pressed edge.

DRESS C

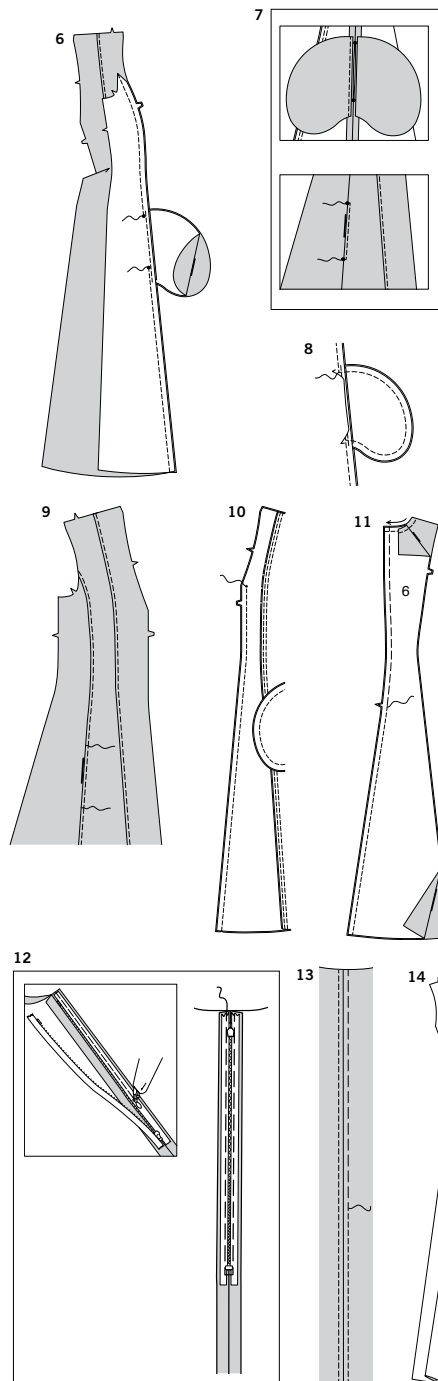
1. **STAYSTITCH** neck edge of FRONT (1) in direction of arrows. Stay-stitching stays in permanently to prevent stretching on curved edges. (Shown only in the first illustration). Machine-stitch inner edges of front and MIDDLE FRONT (2) between single notches 1/2" (1.3cm) from cut edge.

2. Pin middle front to front, matching single notches, clipping front along curves where necessary. Stitch. Press seam toward center front. **NOTE:** All topstitching is 1/4" (6mm) from seam or as directed in Sewing Instructions.

3. On OUTSIDE, **TOPSTITCH** front, as shown.

4. Apply pockets to inner edges of middle front and SIDE FRONT (3) sections, as follows: With RIGHT sides together, pin POCKET (4) to middle front and side front, matching large dots. Stitch in a 3/8" (1cm) seam.

5. Press seam toward pocket, pressing pocket out. **UNDERSTITCH** front pocket by stitching through pocket and seam allowance close to seam.



- 6.** Pin side front to middle front, matching large dots and double notches.
Stitch side seams, leaving an opening between large dots, back-stitching at large dot to reinforce seam.
- 7.** Press pockets and seams open.
On **OUTSIDE**, **TOPSTITCH** middle front pocket opening between large dots, squaring stitches to seam at large dots.

- 8.** Stitch edges of pocket together between seams.

- 9.** Press pocket and seam allowances towards middle front.
TOPSTITCH middle front above and below large dots, connecting to pocket topstitching, keeping side pocket and side front free.

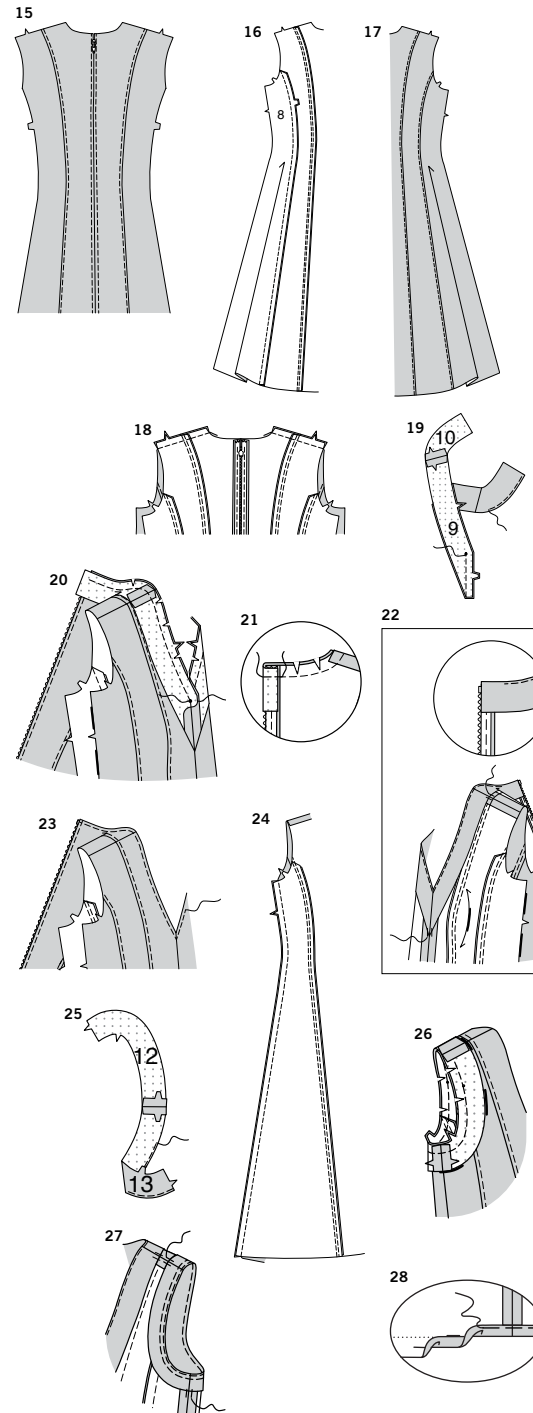
- 10.** Stitch center front seam of assembled front sections below small dot, back-stitching at small dot to reinforce seam.
Press seam open.

- 11.** **STAYSTITCH** neck edge of **BACK (6)** in direction of arrows.
Pin back sections together, matching notches. Baste center back seam above notch.
Stitch center back seam below notch, backstitching at notch to reinforce seam.

- 12.** Open zipper; place face down on extended seam allowance, as shown.
Top stop is 3/4" (2cm) from cut edge and zipper teeth are along basted seam, as shown.
Machine-baste from top to bottom along guideline on zipper tape.
Close zipper; turn pull tab up. Spread dress flat. Baste a scant 1/4" (6mm) from zipper teeth.

- 13.** On **OUTSIDE**, **TOPSTITCH** on each side of basted seam along entire length of dress, as shown.
Remove basting.

- 14.** Stitch **MIDDLE BACK (7)** to back, matching double notches.
Press seam allowances toward middle back.



- 15.** **TOPSTITCH** back.

- 16.** Stitch **SIDE BACK (8)** to middle back, matching triple notches.
Press seam allowances toward middle back.

- 17.** **TOPSTITCH** middle back.

- 18.** Stitch back to front at shoulders.

- 19.** Apply fusible interfacing to **WRONG** side of **FRONT FACING (9)** and **BACK FACING (10)** sections.
Stitch shoulder seams of facing sections.
Stitch center front seam below small dot, backstitching at small dot.
FINISH unnotched edge.

- 20.** With **RIGHT** sides together, pin facing to neck edge, matching shoulder seams and small dots. (Facing extends 5/8" (1.5cm) beyond back opening edges.)
Stitch, breaking and reinforcing stitches at small dot, as shown.

- 21.** Turn back edge of facing to **WRONG** side of dress (over zipper).
Raw edge of facing will be almost 1/8" (3mm) from raw edge of dress.
Stitch across upper edge of facing, as shown.
TRIM seam and corners; clip curves.

- 22.** **UNDERSTITCH** as far as possible by pressing facing and seam away from dress, stitching through facing and seam allowances close to seam.
Turn facing to **INSIDE**; press.
TACK facing to shoulder seams of dress and to center front seam to secure in place.

- 23.** On **OUTSIDE**, **TOPSTITCH** neck edge, pivoting with needle in fabric at center front.

- 24.** Stitch back to front at side seams.

- 25.** Apply fusible interfacing to **WRONG** side of **FRONT ARMHOLE (12)** and **BACK ARMHOLE (13)**, following manufacturer's directions.
Stitch shoulder seam of armhole facing sections, matching double notches.
FINISH unnotched edge.

- 26.** Stitch underarm seam of facing.
With **RIGHT** sides together, stitch facing to armhole edge, matching shoulder and underarm seams.
TRIM seam; clip curves.

- 27.** **UNDERSTITCH** facing.
Turn facing to **INSIDE**; press.
TOPSTITCH armhole edges.
To keep the facing from rolling to **OUTSIDE**, **TACK** to seam allowances.

- 28.** Press under 5/8" (1.5cm) hem allowance on lower edge of dress.
To form **NARROW HEM**, tuck under raw edge to meet crease; press.
Stitch close to inner pressed edge.



Congrats!

You've completed your sewing adventure

SHARE YOUR LOOK



Post your pattern and tag us using [#simplicitypatterns](#)
[@simplicity_creative_group](#)
[@simplicitymccallsuk](#)
[@simplicitymccallsaustralia](#)
for a chance to be featured on our social media.

Look for more PDF patterns at [simplicity.com](#) or for customers outside the U.S. and Canada visit [sewdirect.com](#) and [sewdirect.com.au](#)

Have a question or need help with your sewing project contact us:
[Simplicity.com](#) [Sewdirect.com](#) [Sewdirect.com.au](#)

Simplicity
by design™