

S3096

Simplicity



A



B



C



B



Average

MISSSES' AND WOMEN'S DRESS WITH LENGTH AND SLEEVE VARIATIONS

Suggested Fabrics: Cotton Blends, Poplin, Sateen, Seersucker. **Lining:** Lining Fabrics. **Interfacing:** Lightweight Fusible.

Notions: A,B,C: One invisible zipper: 24" (61cm - cut to fit) for Misses, 26" (66cm - cut to fit) for Women. **Also for C:** One pkg. of ½" (1.3cm) single fold bias tape.

Sizes	10	12	14	16	18	20W	22W	24W	26W	28W
European	36	38	40	42	44	46	48	50	52	54

BODY MEASUREMENTS: Select pattern size based on body measurements

Bust	32½	34	36	38	40	42	44	46	48	50	Ins.
Waist	25	26½	28	30	32	35	37	39	41½	44	"
Hip-9" below waist	34½	36	38	40	42	44	46	48	50	52	"
Back-neck to waist	16	16¼	16½	16¾	17	17¼	17½	17¾	17¾	17¾	"

Interfacing A,B,C

	20" - ¼ yd.											
Dress A	45**	3%	3%	3%	3%	3%	4%	4%	4%	4%	4%	Yds.
	60**	2%	2%	2%	3	3	3½	3½	3½	3½	3½	"
Lining A,B	45***	1%	1%	1%	1%	1%	1%	1%	1%	1%	1%	Yds.
Dress B	45**	4%	4¼	4½	4%	4%	5%	5¼	5%	5%	5%	Yds.
	60**	3¼	3¼	3%	3%	3%	4	4	4	4	4¼	"
Dress C	45**	3%	3½	3%	3%	3%	4¼	4%	4%	4%	4%	Yds.
	60**	2½	2½	2%	2%	2%	3¼	3¼	3%	3%	3%	"
Lining	45***	1	1	1	1%	1%	1¼	1¼	1¼	1¼	1¼	"

FINISHED GARMENT MEASUREMENTS (Includes Design and Wearing Ease)

A,B,C Bust	36	37½	39½	41½	43½	44	46	48	50½	53	Ins.
A,B,C Waist	28½	30	32	34	36	37¾	39¾	41¾	44¾	46¾	"
Width, lower edge											
Dress A	79¾	81¼	83¼	85¼	87¼	100	102	104	106½	109	Ins.
Dress B,C	88¼	89¾	91¾	93¾	95¾	108½	110½	112½	115	117¾	"
Finished back length from base of neck											
Dress A	41	41¼	41½	41¾	42	43	43¼	43½	43¾	44	Ins.
Dress B,C	50	50¼	50½	50¾	51	52	52¼	52½	52¾	53	Ins.

*with nap **without nap

Moins Facile

ROBE AVEC VARIATIONS DE LONGUEUR ET MANCHE POUR JEUNES FEMMES ET FEMMES

Tissus Conseillés: Cotonnades, Popeline, Satinette, Seersucker. **Doubleure:** Tissus à doubleure. **Entoilage:** Thermocollant léger.

Merцерie: A,B,C: 1 fermeture à glissière invisible: 61cm (coupée pour ajuster) pour Jeunes Femmes, 66cm (coupée pour ajuster) pour Femmes. **Aussi pour C:** 1 paquet de ruban de biais simple de 1.3cm.

Tailles	10	12	14	16	18	20W	22W	24W	26W	28W
Françaises	38	40	42	44	46	48	50	52	54	56
Européennes	36	38	40	42	44	46	48	50	52	54

MESURES DU CORPS: Choisissez la taille du patron basée sur les mesures du corps

Poitrine	83	87	92	97	102	107	112	117	122	127	cm
Taille	64	67	71	76	81	89	94	99	105	112	"
Hanches (23cm au-dessous de la taille)											
	88	92	97	102	107	112	117	122	127	132	cm
Dos du cou à la taille	40.5	41.5	42	42.5	43	44	44	44.5	45	45	"

Entoilage A,B,C

	51cm - 0.5m											
Robe A	115cm*	3.3	3.3	3.3	3.3	3.3*	4.2	4.2	4.3	4.3	4.3	m
	150cm*	2.6	2.6	2.6	2.6	2.7	3.2	3.2	3.2	3.2	3.2	"
Doubleure A,B	115cm**	1.3	1.3	1.3	1.3	1.3	1.5	1.5	1.5	1.6	1.6	m
Robe B	115cm*	3.8	3.9	4.1	4.2	4.2	4.7	4.8	4.8	4.9	4.9	m
	150cm*	2.9	3.0	3.1	3.1	3.1	3.5	3.7	3.7	3.9	"	
Robe C	115cm*	3.1	3.2	3.3	3.4	3.4	3.9	4.0	4.0	4.0	m	
	150cm*	2.3	2.3	2.3	2.3	2.4	3.0	3.0	3.0	3.0	"	
Doubleure	115cm**	0.9	0.9	0.9	0.9	0.9	1.1	1.1	1.1	1.1	"	

MESURES DES VÊTEMENTS FINI (Motif et aisance de port compris)

A,B,C Poitrine	91	95	100	105	110	112	117	122	128	135	cm
A,B,C Taille	72	76	81	86	91	96	101	106	112	119	"
Largeur à l'ourlet											
Robe A	203	206	211	217	222	254	259	264	271	277	cm
Robe B,C	224	228	233	238	243	276	281	286	292	299	"
Longueur finie – dos, votre nuque à l'ourlet											
Robe A	104	105	105	106	107	109	110	110	111	112	cm
Robe B,C	127	128	128	129	130	132	133	133	134	135	"

*avec sens **sans sens



A



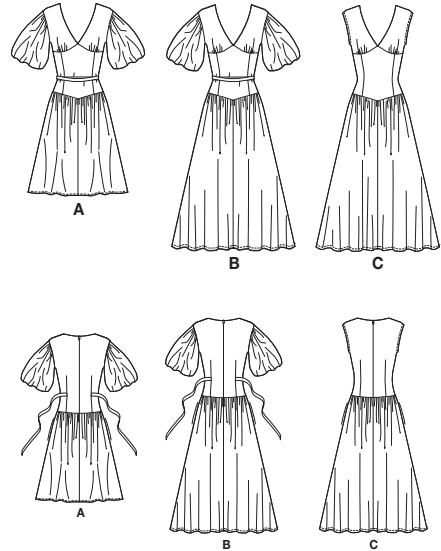
B



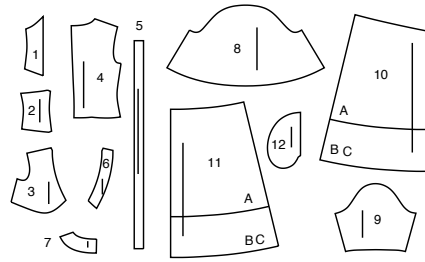
C

Simplicity®

Thank you for purchasing this Simplicity pattern. We made every effort to provide you with a high quality product.



12 PIECES



- 1 Bodice Front-A,B,C
- 2 Bodice Side Front-A,B,C
- 3 Bodice Upper Front-A,B,C
- 4 Bodice Back-A,B,C
- 5 Tie End-A,B,C
- 6 Front Facing-A,B,C
- 7 Back Facing-A,B,C
- 8 Sleeve-A,B
- 9 Sleeve Lining-A,B
- 10 Skirt Front-A,B,C
- 11 Skirt Back-A,B,C
- 12 Pocket-A,B,C

The Pattern General Directions Cutting/Marking

SYMBOLS

- ←→ GRAIN LINE Place on straight grain of fabric parallel to selvage
- ⇓ PLACE SOLID LINE on fold of fabric.
- CENTER FRONT OR BACK OF GARMENT.
- ▽▽▽ NOTCHES
- DOTS
- CUTTING LINE
- == LENGTHEN OR SHORTEN LINES

ADJUST IF NEEDED

Make adjustments before placing pattern on fabric.

TO LENGTHEN: Cut pattern between lengthen or shorten lines. Spread pattern evenly, the amount needed and tape to paper.

TO SHORTEN: At lengthen or shorten lines, make an even pleat taking up amount needed. Tape in place.

SEAM ALLOWANCE: 5/8" (1.5cm) unless otherwise stated is included but not printed on MULTI-SIZE PATTERNS. Mark your size with colored felt tip pen. See chart on tissue for how to use MULTI-SIZE PATTERNS.

When lengthen or shorten lines are not given, make adjustments at lower edge of pattern.

BEFORE CUTTING:

PRESS pattern pieces with a warm dry iron. PRE-SHRINK fabric by pre-washing washables or steam-pressing non-washables.

CIRCLE your cutting layout.

PIN pattern to fabric as shown in Cutting Layouts.

AFTER CUTTING:

Transfer markings to WRONG side of fabric before removing pattern. Use pin and chalk method or dressmaker's tracing paper and wheel.

To Quick Mark:

- Snip edge of fabric to mark notches, ends of fold lines and center lines.
- Pin mark dots.

Sewing

SEW garment following Sewing Directions.

- PIN or machine-baste seams matching notches.
- STITCH 5/8" (1.5 cm) seams unless otherwise stated.
- PRESS seams open unless otherwise indicated clipping when necessary so seams will lie flat.
- TRIM seams to reduce bulk, as shown below.

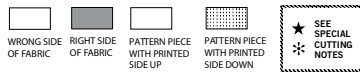
SPECIAL CUTTING NOTES

★ If layout shows a piece extending past fold, cut out all pieces except piece that extends.

✱ Mark small arrows along both selvages indicating direction of nap or design. Fold fabric crosswise with RIGHT sides together, and cut along fold (a).

Turn one fabric layer around so arrows on both layers go in the same direction. Place RIGHT sides together (b).

Cutting Layouts

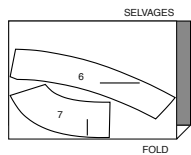


POSITION OF PATTERN PIECES MAY VARY SLIGHTLY ACCORDING TO YOUR PATTERN SIZE

INTERFACING A, B, C

USE PIECES 6 7

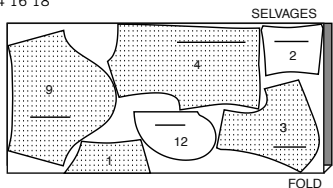
20" (51CM) WITHOUT NAP ALL SIZES



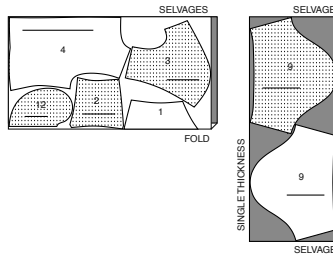
LINING A,B

USE PIECES 1 2 3 4 9 12

45" (115CM) WITHOUT NAP MISS SIZES 10 12 14 16 18



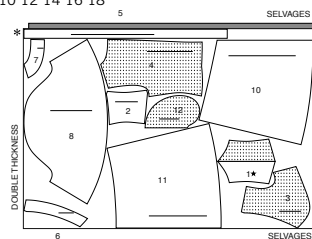
45" (115CM) WITHOUT NAP WOMEN SIZES 20W 22W 24W 26W 28W



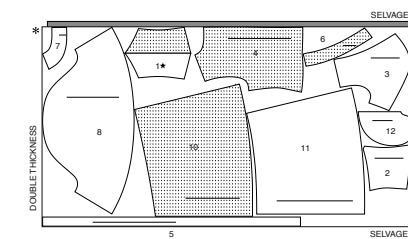
DRESS A

USE PIECES 1 2 3 4 5 6 7 8 10 11 12

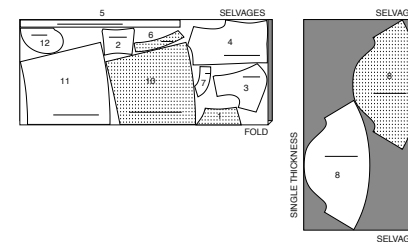
45" (115CM) WITH NAP MISS SIZES 10 12 14 16 18



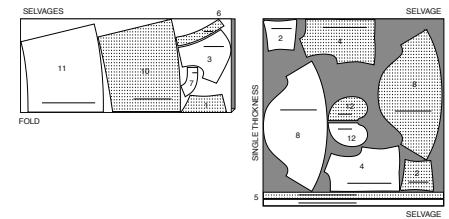
45" (115CM) WITH NAP WOMEN SIZES 20W 22W 24W 26W 28W



60" (150CM) WITH NAP MISS SIZES 10 12 14 16 18



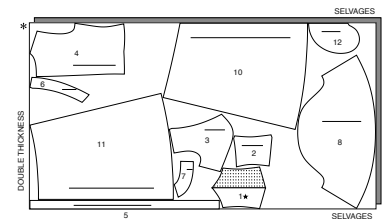
60" (150CM) WITH NAP WOMEN SIZES 20W 22W 24W 26W 28W



DRESS B

USE PIECES 1 2 3 4 5 6 7 8 10 11 12

45" (115CM) WITH NAP MISS SIZES 10 12 14 16 18

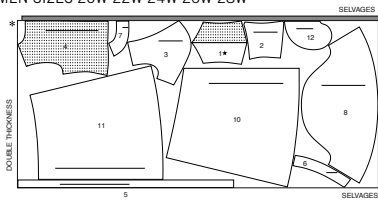


CUTTING LAYOUTS CONTINUED ON PAGE 2

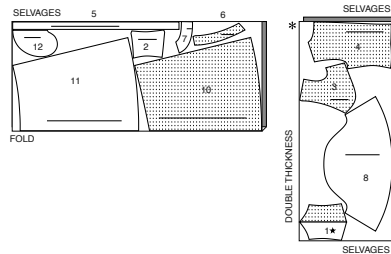
S3096

2 of 4

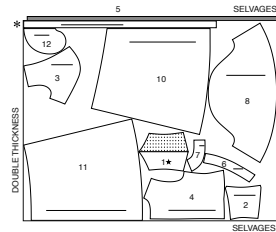
45" (115CM)
WITH NAP
WOMEN SIZES 20W 22W 24W 26W 28W



60" (150CM)
WITH NAP
MISS SIZES 10 12 14 16 18

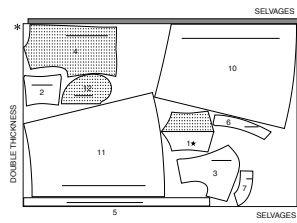


60" (150CM)
WITH NAP
WOMEN SIZES 20W 22W 24W 26W 28W

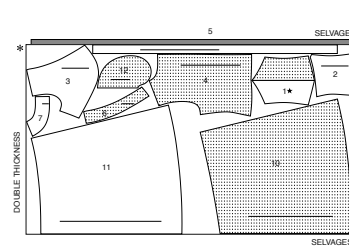


DRESS C
USE PIECES 1 2 3 4 5 6 7 10 11 12

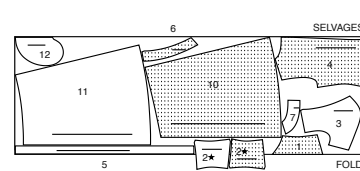
45" (115CM) WITH NAP
MISS SIZES 10 12 14 16 18



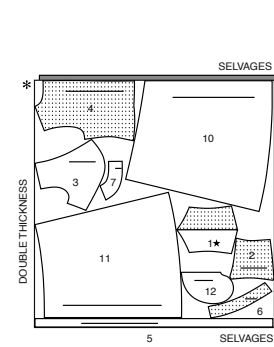
45" (115CM)
WITH NAP
WOMEN SIZES 20W 22W 24W 26W 28W



60" (150CM)
WITH NAP
MISS SIZES 10 12 14 16 18

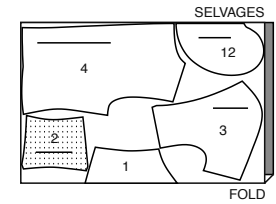


60" (150CM)
WITH NAP
WOMEN SIZES 20W 22W 24W 26W 28W

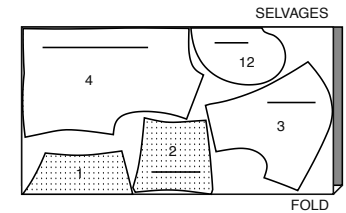


LINING C
USE PIECES 1 2 3 4 12

45" (115CM)
WITHOUT NAP
MISS SIZES 10 12 14 16 18



45" (115CM)
WITHOUT NAP
WOMEN SIZES 20W 22W 24W 26W 28W



Sewing Directions

FABRIC KEY RIGHT SIDE WRONG SIDE INTERFACING LINING LINING

- Read **General Directions** on page 1 before you begin.
- Sewing methods in **BOLD TYPE** have Sewing Tutorial Video available. Scan **QR CODE** to watch videos:
- DART** - See **Darts**: "sewing a flat dart" video.
- EASE/GATHER** - See **Gathering**: "sewing two row gathers" video.
- FINISH** - See **Seams**: "how to finish seam allowances" video.
- INVISIBLE ZIPPER** - See **Zipper**: "sewing an invisible zipper" video.
- SLEEVE** - See **Armholes/Sleeves**: "sewing a set in sleeve" video.
- SLIPSTITCH** - See **Hand Stitching**: "how to slip stitch" video.
- TOPSTITCH** - See **Machine Stitches**: "how to topstitch" video.
- TRIM** - See **Seams**: "how to trim, clip and layer seams" video.
- UNDERSTITCH** - See **Machine Stitches**: "how to understitch" video.

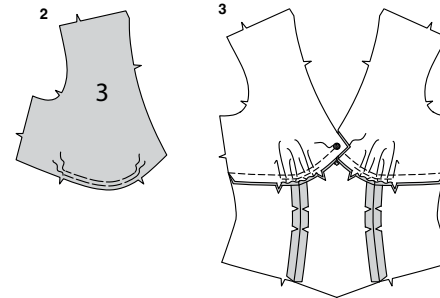
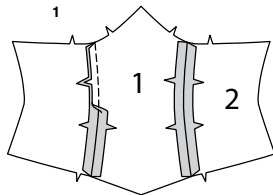
PATTERN PIECES WILL BE IDENTIFIED BY NUMBERS THE FIRST TIME THEY ARE USED.

STITCH 5/8" (1.5CM) SEAMS WITH RIGHT SIDES TOGETHER UNLESS OTHERWISE STATED.

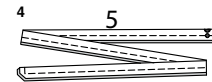
DRESS A, B, C

BODICE

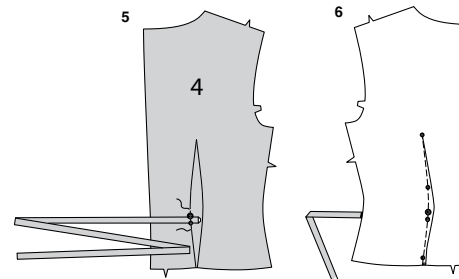
- With **RIGHT** sides together, stitch **BODICE SIDE FRONT** (2) to side edges of **BODICE FRONT** (1), matching notches. **TRIM** seam allowances.



- GATHER** lower edge of **BODICE UPPER FRONT** (3) between notches.
- Pin bodice upper front to upper edge of bodice, **RIGHT** sides together, matching notches and large dots. Adjust gathers. Stitch to large dot, breaking stitching at large dot. Press seam down.



- With **RIGHT** sides together, fold **TIE END** (5) in half lengthwise, having raw edges even. Stitch, using 3/8"(1cm) seam, leaving end with dots open. **TRIM**.

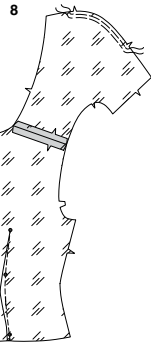
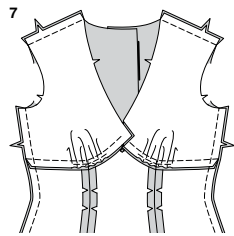


- Turn right side out. Press. Baste raw edges. On **OUTSIDE**, pin tie end to **BODICE BACK** (4), matching large and small dots having 3/8"(1cm) seamline along stitching line of one leg of dart, with raw edge of tie end toward center of dart. Baste.
- Stitch **DART** in bodice back, catching in raw edges of tie end. Press dart toward center back, turning tie end toward side edge.

SEWING TUTORIALS

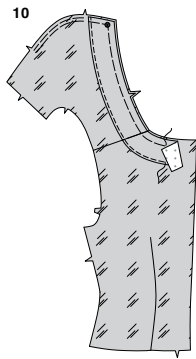
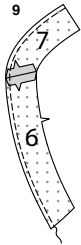


Build your skills viewing short, easy-to-follow videos at simplicity.com/sewingtutorials



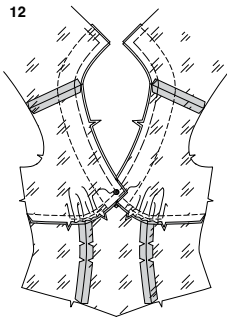
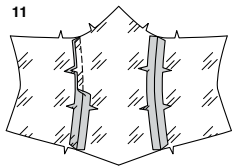
7. Stitch bodice front to bodice back at shoulders and sides.

8. Make **DART** in bodice back **LINING**. Stitch bodice back lining to bodice upper front lining at shoulders. **GATHER** lower edge of bodice upper front **LINING**.



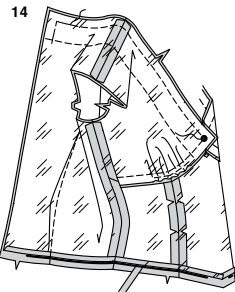
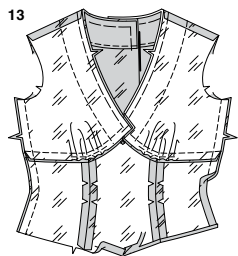
9. Fuse **INTERFACING** to **WRONG** sides of **FRONT FACING** (6) and **BACK FACING** (7), following manufacturer's instructions. Stitch front facing to back facing at shoulders. **FINISH** inner edge of facing.

10. Pin **WRONG** side of facing to **RIGHT** side of lining, matching notches, shoulder seams and large dots, having raw edges even. Baste raw edges. Stitch close to finished edge of facing.



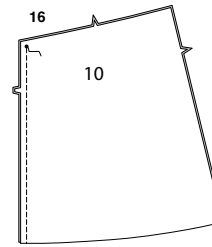
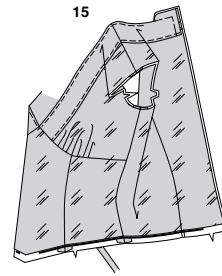
11. Stitch bodice side front **LINING** to side edges of bodice front **LINING**.

12. Pin bodice front lining to lower edge of bodice upper front lining, with **RIGHT** sides together, matching notches and large dots. Adjust gathers. Stitch to large dot. Press seam down.



13. Stitch bodice front lining to bodice back lining at sides. Turn under 5/8" (1.5cm) on lower edge of lining. Press. Trim pressed edge of lining to 3/8" (1cm).

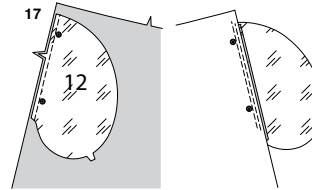
14. Pin lining to neck edge of bodice, **RIGHT** sides together, matching seams, having raw edges even. Stitch, breaking stitching at large dot and stopping 2" (5cm) from back opening edges. Trim seam. Do not trim unstitched portion of seam.



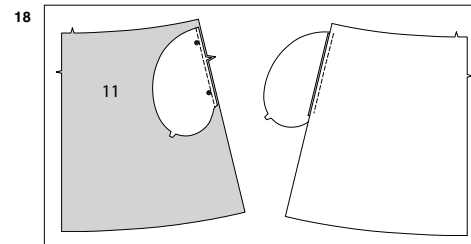
15. **UNDERSTITCH** lining, stopping 3" (7.5cm) from back opening edges. Turn lining to inside. Press.

SKIRT

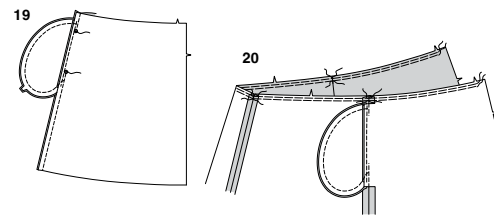
16. Stitch center seam in **SKIRT FRONT** (10) from lower edge to small dot.



17. With **RIGHT** sides together, pin **POCKET** (12) **LINING** sections to skirt front, matching notches and large dots. Stitch using 3/8" (1cm) seam. Press seam toward pockets. **UNDERSTITCH** pocket.

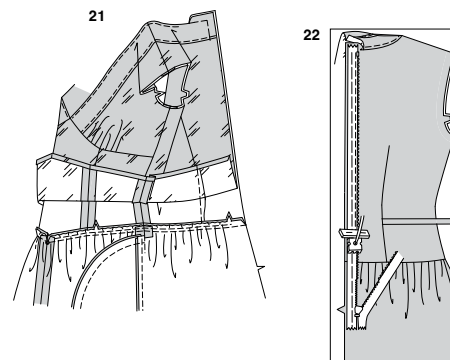


18. With **RIGHT** sides together, pin remaining pockets to **SKIRT BACK** (11) sections, matching notches and large dots. Stitch using 3/8" (1cm) seam. Press seam toward pockets.



19. Pin skirt front to skirt back at sides, matching large dots. Stitch, leaving an opening between large dots, back-stitching at large dots to reinforce seam. Stitch pocket edges together between side seams.

20. Clip garment back seam allowances at ends of pocket, as shown. Press seam open above and below clips. Press pocket toward front. **GATHER** upper edge of skirt between notches in back, breaking stitching at seams.

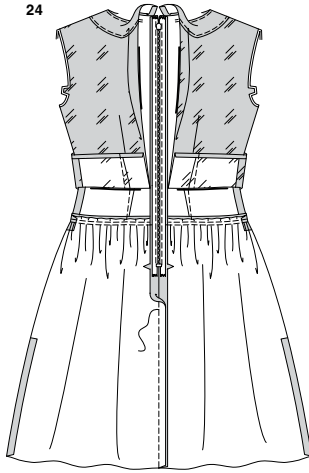
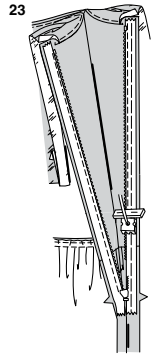


21. Lift up lining. With **RIGHT** sides together, pin upper edge of skirt to lower edge of bodice, matching centers, notches and side seams. Adjust gathers. Stitch, keeping lining free. Press seam toward bodice.

INVISIBLE ZIPPER

NOTE: Stitch the invisible zipper using an invisible zipper foot. If the zipper is longer than the zipper opening, adjust after the zipper is inserted. For a How to video, see **ZIPPER: "sewing an invisible zipper"**.

22. Open the zipper and press the tape using a cool iron. Open out bodice lining. On **OUTSIDE**, pin **RIGHT** side of the zipper face down on the **RIGHT** side of the zipper opening, keeping bodice lining free. Have the coil along the seam line, the tape within the seam allowance and the top stop 3/4" (2cm) below upper edge, as shown. Hand-baste along center of the tape. Position zipper foot at the top of the zipper with **RIGHT** groove of the foot over coil. Stitch along tape to the notch. Back-stitch to reinforce.



23. Pin the remaining half of the zipper to the LEFT side of the zipper opening in same manner. Make sure the upper and lower edges of the garment are even. Hand-baste along the center of the tape. Position zipper foot at the top of the zipper with LEFT groove over the coil. Stitch along tape to the notch. Back-stitch to reinforce.

24. Close zipper and check that it is invisible from the OUTSIDE. Pull the free ends of the zipper tape away from the seam allowance. Pin remaining center back seam together below zipper. Position zipper foot all the way to the LEFT so the needle goes down through the outer notch of the foot. Start stitching seam 1/4"(6mm) above lowest stitch and slightly to the LEFT. Stitch seam for about 3"(7.5cm). Stitch remainder of seam using your regular presser foot.

25. If the zipper is longer than the opening, using a strong thread, hand-sew a few small stitches across ends of coils at end of opening. Trim away lower end of zipper tape to within 5/8"(1.5cm) of hand-stitches.

26. If you prefer, open out each seam allowance at end of zipper and stitch tape to seam allowance.

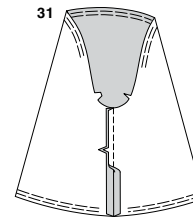
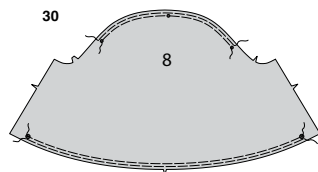
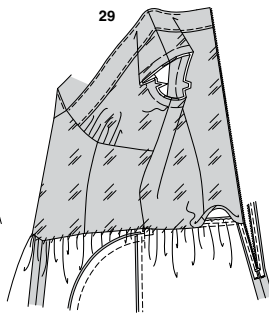
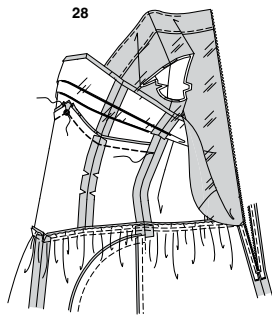
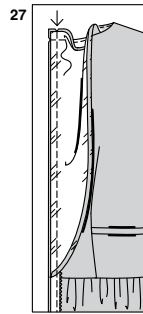
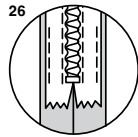
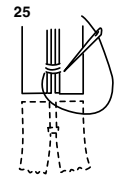
27. Open out back opening edge of dress, rolling the zipper teeth away from the opening edge. Turn back lining to OUTSIDE. Stitch remaining upper edges of back and lining together, connecting to previous stitching. Trim. Pin back opening edges of lining, and dress together. Stitch across lining 1/2"(1.3cm) from back edges, keeping zipper teeth free. Trim corners. Do not trim center back edges.

28. Turn lining to inside. Press. Lift up lining. On INSIDE, pin upper bodice seams of dress and lining together, matching centers and large dots. Stitch seam allowances together, breaking stitching at large dot.

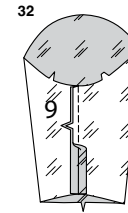
29. Turn lining down. SLIPSTITCH pressed edge of lining over skirt seam. Baste armhole edges together.

SLEEVES VIEWS A, B

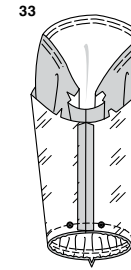
30. GATHER lower edge of SLEEVE (8) between large dots. GATHER upper edge of sleeve between outer small dots.



31. Stitch sleeve seam.

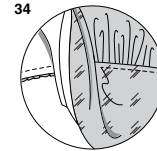


32. Stitch seam of SLEEVE LINING (9).

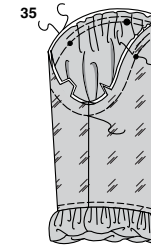


33. Pin lining to lower edge of sleeve, RIGHT sides together, matching notches, large dots and seams. Adjust gathers. Baste. Stitch. TRIM. Press seam toward lining.

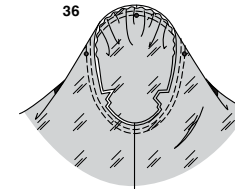
34. TOPSTITCH lining.



35. Turn lining to INSIDE. Press. Pin sleeve to lining WRONG sides together, matching notches, small dots, and seams. Adjust gathers. Baste raw edges together. GATHER cap of sleeve and lining together between outer small dots.



36. With RIGHT sides together, pin SLEEVE into armhole with center small dot at shoulder seam, matching underarm seam, notches, and remaining small dots. Adjust gathers. Baste. Stitch. Stitch again 1/4"(6mm) away in seam allowances. Trim close to stitching below notches.

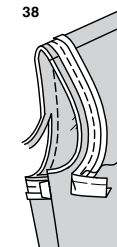


ARMHOLE FINISH VIEW C

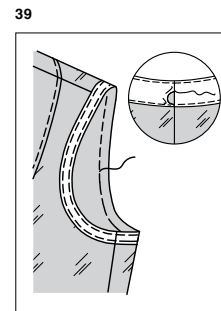
37. Open out one folded edge of bias tape. Press lightly.



38. Pin bias tape to armhole edge, placing crease along seamline, turning back ends to meet at underarm seam. Stitch along crease. Trim armhole seam allowance even with bias tape. UNDERSTITCH bias tape.

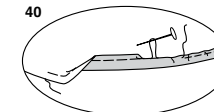


39. Turn bias tape to INSIDE along seam. Press. Baste in place. Stitch close to basted edge. SLIPSTITCH ends.



FINISHING

40. Stitch 1/4"(6mm) from lower edge of dress, using long machine stitches. Turn up 5/8"(1.5cm) hem at lower edge of dress, turning under 1/4"(6mm) on raw edge. Pull thread to ease in fullness. Stitch.





Congrats!

You've completed your sewing adventure

SHARE YOUR LOOK



Post your pattern and tag us using [#simplicitypatterns](#)
[@simplicity_creative_group](#)
[@simplicitymccallsuk](#)
[@simplicitymccallsaustralia](#)
for a chance to be featured on our social media.

Look for more PDF patterns at [simplicity.com](#) or for customers outside the U.S. and Canada visit [sewdirect.com](#) and [sewdirect.com.au](#)

Have a question or need help with your sewing project contact us:
[Simplicity.com](#) [Sewdirect.com](#) [Sewdirect.com.au](#)

Simplicity
by design