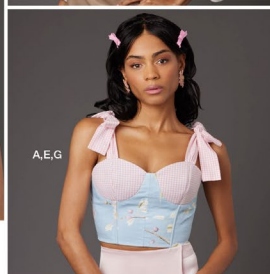


S3095

Simplicity[®] COSTUMES



Designed and
printed in USA.



Shop all the pattern brands you love @

Simplicity[®].com

For customers outside of the U.S. and Canada

sewdirect.com

sewdirect.com.au

BODY MEASUREMENTS

	8	10	12	14	16	18	20	22	24	26	
Chest	31 1/2	32 1/2	33 1/2	34 1/2	35 1/2	36 1/2	37 1/2	38 1/2	39 1/2	40 1/2	In.
	(80)	(83)	(87)	(90)	(93)	(97)	(100)	(103)	(107)	(110)	cm
Waist	24	25	26 1/2	28	30	32	34	37	39	42 1/2	In.
	(61)	(64)	(67)	(71)	(76)	(81)	(86)	(91)	(99)	(108)	cm
Hip 4" below waist	33 1/2	34 1/2	35 1/2	36 1/2	37 1/2	38 1/2	39 1/2	40 1/2	41 1/2	42 1/2	In.
	(85)	(88)	(90)	(93)	(95)	(98)	(101)	(104)	(107)	(110)	cm
Back-neck to waist	15 1/2	16	16 1/2	16 1/2	16 1/2	17	17 1/2	17 1/2	17 1/2	17 1/2	In.
	(40)	(41)	(42)	(42)	(42)	(43)	(44)	(44)	(44)	(44)	cm

Average

DESIGN YOUR OWN CORSET

Suggested Fabrics: Brocade, Cotton Types, Crepe, Faux Leather, Faux Suede, Gabardine, Lightweight Wool Types, Linen Types, Satin, Shantung, Taffeta, Twill. **G** also in Charmeuse, Double Georgette, Jacquards. **Lining:** Lightweight Cotton Types, Muslin. **Interlining:** 1/8" (3mm) thick, lightweight foam. **Interfacing:** Medium weight fusible.

Notions: A,B,C,D: 2 1/2 yds. (2.1m) of 1/4" (6mm) featherweight boning. **Also for A:** Ten 1/2" (1.3cm) eyelets with a 3/8" (1cm) opening, 2 1/2 yds. (2.2m) of 3/8" (1.5cm) ribbon or 1/4" (6mm) cord.

Also for B: Eight large hooks and eyes. **Also for C:** Sixteen 1/2" (1.3cm) eyelets with a 3/8" (1cm) opening, 2 1/2 yds. (2.3m) of 3/8" (1.5cm) ribbon or 1/4" (6mm) cord. **D:** Twenty 1/2" (1.3cm) eyelets with a 3/8" (1cm) opening, 3 1/2 yds. (2.9m) of 3/8" (2.2cm) ribbon or 1/4" (6mm) cord.

H: Assorted silk flowers (opt.).

Sizes	8	10	12	14	16	18	20	22	24	26
European	34	36	38	40	42	44	46	48	50	52

Corset A,B,C,D

45"	3/8"	1/2"	5/8"	3/4"	3/4"	3/4"	3/4"	3/4"	3/4"	Yd.
60"	3/8"	3/8"	3/8"	3/8"	1/2"	1/2"	1/2"	1/2"	1/2"	"
115cm*	0.3	0.5	0.6	0.6	0.6	0.6	0.6	0.6	0.7	m
150cm*	0.3	0.3	0.3	0.3	0.3	0.3	0.5	0.5	0.5	"

Lining

45"	3/8"	3/8"	1/2"	5/8"	3/4"	3/4"	3/4"	3/4"	3/4"	Yd.
115cm**	0.3	0.3	0.5	0.6	0.6	0.6	0.6	0.6	0.7	m

Interfacing

20" - 1 1/2 yds. (51cm - 1.0m)

Bust Cups E,F

45, 60" - 3/8 yd. (115, 150cm* - 0.3m)

Lining and Interlining - 45, 60" (115, 150cm*) - purchase the same amount as Bust Cups

Interfacing

20" - 3/8 yd. (51cm - 0.6m)

Shoulder Straps G

45, 60"	3/8"	3/8"	3/8"	3/8"	3/8"	3/8"	1	1	1	1	Yd.
115, 150cm*	0.8	0.8	0.8	0.8	0.8	0.8	0.8	0.9	0.9	0.9	m

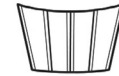
Shoulder Straps H

45, 60"	3/8"	3/8"	3/8"	3/8"	3/8"	3/8"	3/8"	3/4"	3/4"	3/4"	Yd.
115, 150cm*	0.6	0.6	0.6	0.6	0.6	0.6	0.6	0.6	0.7	0.7	m

*with nap **without nap



A



B,C



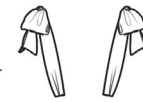
D



E



F



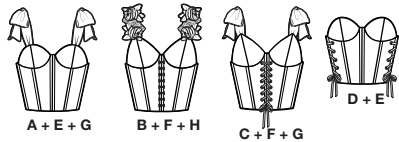
G



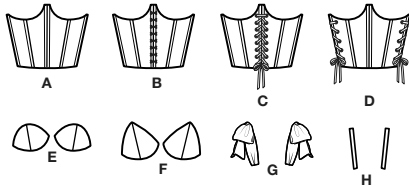
H

Simplicity®

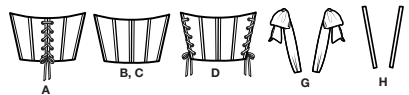
Thank you for purchasing this Simplicity pattern.
We made every effort to provide you with a high quality product.



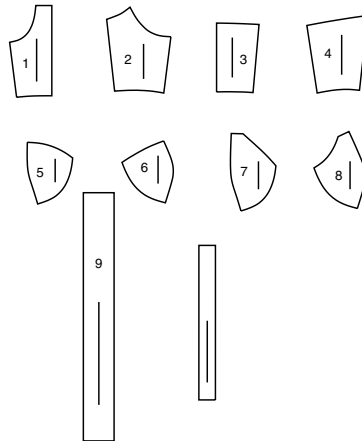
DESIGN ELEMENTS FRONT



DESIGN ELEMENTS BACK



10 PIECES



- 1 FRONT - A,B,C,D
- 2 SIDE FRONT - A,B,C,D
- 3 BACK - A,B,C,D
- 4 SIDE BACK - A,B,C,D
- 5 CUP FRONT - E
- 6 CUP SIDE FRONT - E
- 7 CUP FRONT - F
- 8 CUP SIDE FRONT - F
- 9 SHOULDER STRAP - G
- 10 SHOULDER STRAP - H



www.simplicity.com



info@simplicity.com



1-888-588-2700

General Directions

The Pattern

- SYMBOLS**
- GRAIN LINE Place on straight grain of fabric parallel to selvage
 - PLACE SOLID LINE on fold of fabric.
 - CENTER FRONT OR BACK of garment.
 - NOTCHES
 - DOTS
 - CUTTING LINE
 - LENGTHEN OR SHORTEN LINES

SEAM ALLOWANCE: 5/8" (1.5cm) unless otherwise stated is included but not printed on MULTI-SIZE PATTERNS. Mark your size with colored felt tip pen. See chart on tissue for how to use MULTI-SIZE PATTERNS.

ADJUST IF NEEDED
Make adjustments before placing pattern on fabric.

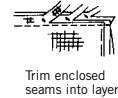
TO LENGTHEN:
Cut pattern between lengthen or shorten lines. Spread pattern evenly, the amount needed and tape to paper.

TO SHORTEN:
At lengthen or shorten lines, make an even pleat taking up amount needed. Tape in place.

When lengthen or shorten lines are not given, make adjustments at lower edge of pattern.

Sewing

- SEW garment following **Sewing Directions**.
- PIN or machine-baste seams matching notches.
- STITCH 5/8" (1.5 cm) seams unless otherwise stated.
- PRESS seams open unless otherwise indicated clipping when necessary so seams will lie flat.
- TRIM seams to reduce bulk, as shown below.



Trim enclosed seams into layers



Trim corners



Clip inner curves



Notch outer curves

Cutting/Marking

BEFORE CUTTING:
PRESS pattern pieces with a warm dry iron. PRE-SHRINK fabric by pre-washing washables or steam-pressing non-washables.

CIRCLE your cutting layout.

PIN pattern to fabric as shown in Cutting Layouts.

• FOR DOUBLE THICKNESS: Fold fabric with RIGHT sides together.

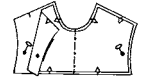
• FOR SINGLE THICKNESS: Place fabric RIGHT side up.

• FOR PILE, SHADED OR ONE WAY DESIGN FABRICS: Use "with nap" layouts

AFTER CUTTING:
Transfer markings to WRONG side of fabric before removing pattern. Use pin and chalk method or dressmaker's tracing paper and wheel.

To Quick Mark:

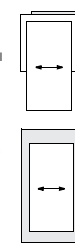
- Snip edge of fabric to mark notches, ends of fold lines and center lines.
- Pin mark dots.



SPECIAL CUTTING NOTES

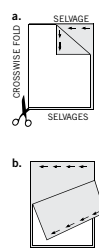
★ If layout shows a piece extending past fold, cut out all pieces except piece that extends.

Open out fabric to single thickness. Cut extending piece on RIGHT side of fabric in position shown.

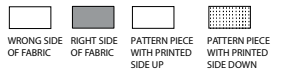


✱ Mark small arrows along both selvages indicating direction of nap or design. Fold fabric crosswise with RIGHT sides together, and cut along fold (a).

Turn one fabric layer around so arrows on both layers go in the same direction. Place RIGHT sides together (b).



Cutting Layouts



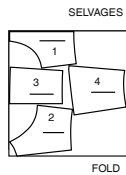
POSITION OF PATTERN PIECES MAY VARY SLIGHTLY ACCORDING TO YOUR PATTERN SIZE

NOTE: FOR LEATHER-LIKE OR SUEDE-LIKE FABRIC, ALTER TISSUE PATTERN BEFORE CUTTING. PLACE PINS WITHIN SEAM ALLOWANCE OR USE MASKING TAPE. DO NOT USE A TRACING WHEEL TO TRANSFER MARKINGS.

CORSET A,B,C,D

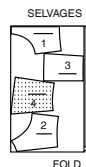
USE PIECES 1 2 3 4

45" (115CM)
WITH NAP
ALL SIZES



FOLD

60" (150CM)
WITH NAP
ALL SIZES

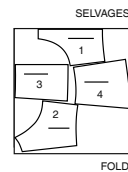


FOLD

LINING A,B,C,D

USE PIECES 1 2 3 4

45" (115CM)
WITHOUT NAP
ALL SIZES

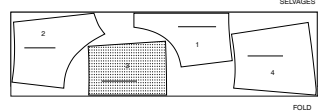


FOLD

INTERFACING A,B,C,D

USE PIECES 1 2 3 4

20" (51CM)
ALL SIZES

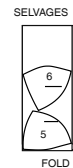


FOLD

BUST CUP E

USE PIECES 5 6

45" OR 60" (115CM OR 150CM)
WITH NAP
ALL SIZES



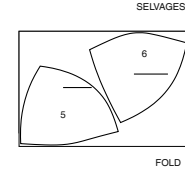
FOLD

FOR LINING AND INTERLINING FOLLOW SAME LAYOUT.

INTERFACING E

USE PIECES 5 6

20" (51CM)
ALL SIZES



FOLD

BUST CUP F

USE PIECES 7 8

45" OR 60" (115CM OR 150CM)
WITH NAP
ALL SIZES



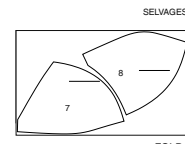
FOLD

FOR LINING AND INTERLINING FOLLOW SAME LAYOUT.

INTERFACING F

USE PIECES 7 8

20" (51CM)
ALL SIZES

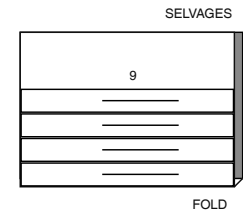


FOLD

STRAP G

USE PIECE 9

45" OR 60" (115CM OR 150CM)
WITH NAP
ALL SIZES

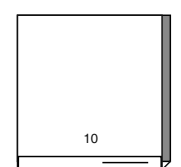


FOLD

STRAP H

USE PIECE 10

45" OR 60" (115CM OR 150CM)
WITH NAP
ALL SIZES



FOLD

SEWING TUTORIALS



Build your skills viewing short, easy-to-follow videos at simplicity.com/sewingtutorials

Sewing Directions

FABRIC KEY **RIGHT SIDE** **WRONG SIDE** **INTERFACING** **LINING** **LINING**

Read **General Directions** on page 1 before you begin.

Sewing methods in **BOLD TYPE** have Sewing Tutorial Video available. Scan **QR CODE** to watch videos:

GATHER – See Gathering: “sewing two row gathers” video.

EDGE STITCH – See Machine Stitches: “how to sew an edgestitch” video.

SLIPSTITCH – See Hand Stitching: “how to slip stitch” video.

TOPSTITCH – See Machine Stitches: “how to topstitch” video.

TRIM SEAM – See Seams: “how to trim, clip and layer seams” video.

UNDERSTITCH – See Machine Stitches: “how to understitch” video.

PATTERN PIECES WILL BE IDENTIFIED BY NUMBERS THE FIRST TIME THEY ARE USED.

STITCH 5/8" (1.5CM) SEAMS WITH RIGHT SIDES TOGETHER UNLESS OTHERWISE STATED.

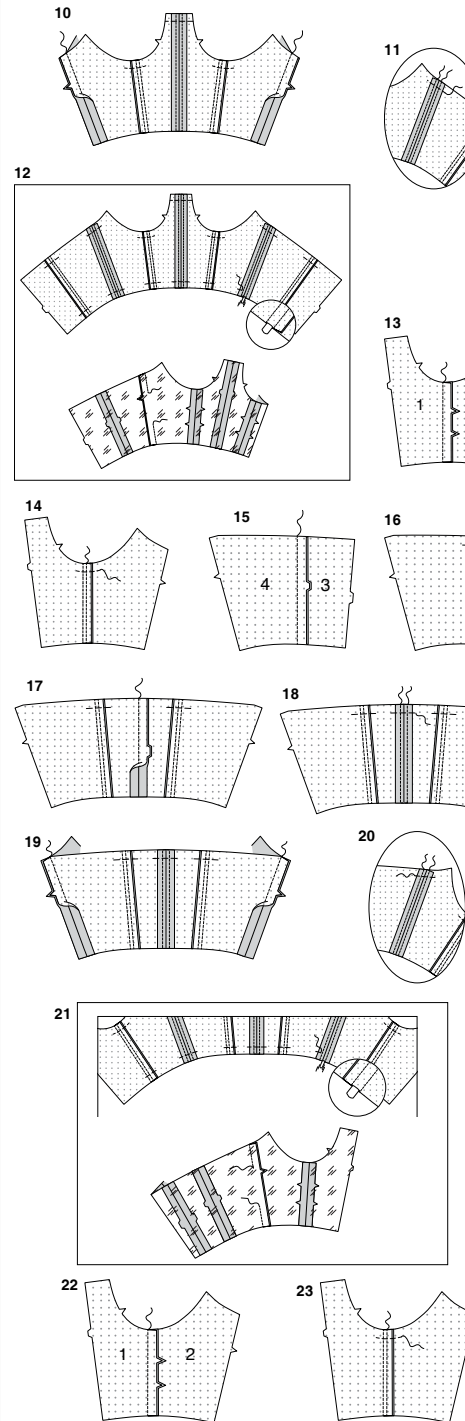
CORSET A, B, C, D

INTERFACING

1. Pin interfacing to **WRONG** side of **FRONT** (1), **SIDE FRONT** (2), **BACK** (3), and **SIDE BACK** (4) sections. Fuse in place following manufacturer's directions.
2. **FOR ROUND CUP E** – Pin interfacing to **CUP FRONT** (5) and **CUP SIDE FRONT** (6). Fuse in place following manufacturer's directions.
3. **FOR TRIANGULAR CUP F** – Pin interfacing to **CUP FRONT** (7) and **CUP SIDE FRONT** (8). Fuse in place following manufacturer's directions.

UNDERBUST CORSET A

4. With **RIGHT** sides together and raw edges even, pin **FRONT** (1) sections to **SIDE FRONT** (2) sections, matching notches. Stitch. Press seam toward side front.
5. To form casing for boning, stitch side front a generous 1/4" (6mm) from seam through all thicknesses. Baste along upper seamline.
6. With **RIGHT** sides together and raw edges even, pin front edges together, matching notches. Stitch. Press seam open.
7. To form casing for boning, stitch front a generous 1/4" (6mm) each side of seam through all thicknesses. Baste along upper seamline.
8. With **RIGHT** sides together and raw edges even, pin **BACK** (3) to **SIDE BACK** (4), matching notches. Stitch. Press seam toward back.
9. To form casing for boning, stitch back a generous 1/4" (6mm) from seam through all thicknesses. Baste along upper seamline.



10. With **RIGHT** sides together and raw edges even, pin front to back at side edges, matching notches. Stitch. Press seams open.

11. To form casing for boning, stitch a generous 1/4" (6mm) each side of side seams through all thicknesses. Baste along upper seamline.

12. Cut a piece of boning the length of each casing (between the seamlines), minus 1/2" (1.3cm). Insert boning into casings; baste along lower seamline. Stitch seams of lining, leaving an opening in one side seam for turning.

UNDERBUST CORSET B, C

13. With **RIGHT** sides together and raw edges even, pin **FRONT** (1) sections to **SIDE FRONT** (2) sections, matching notches. Stitch. Press seam toward side front.

14. To form casing for boning, stitch side front a generous 1/4" (6mm) from seam through all thicknesses. Baste along upper seamline.

15. With **RIGHT** sides together and raw edges even, pin **BACK** (3) to **SIDE BACK** (4), matching notches. Stitch. Press seam toward back.

16. To form casing for boning, stitch back a generous 1/4" (6mm) from seam through all thicknesses. Baste along upper seamline.

17. With **RIGHT** sides together and raw edges even, pin back edges together, matching notches. Stitch. Press seam open.

18. To form casing for boning, stitch back a generous 1/4" (6mm) each side of seam through all thicknesses. Baste along upper seamline.

19. With **RIGHT** sides together and raw edges even, pin front to back at side edges, matching notches. Stitch. Press seams open.

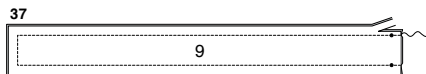
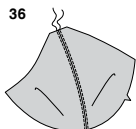
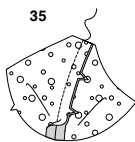
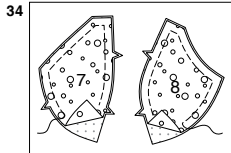
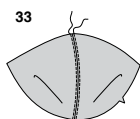
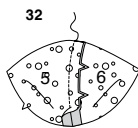
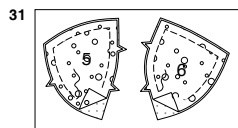
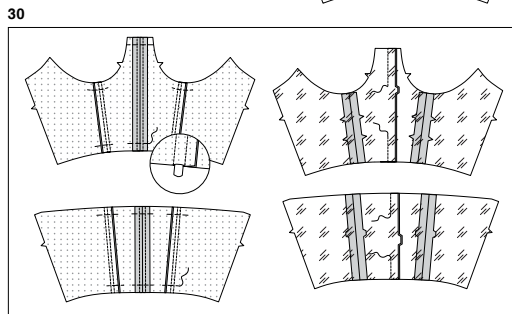
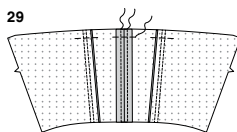
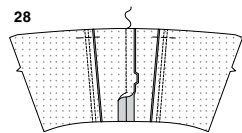
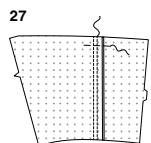
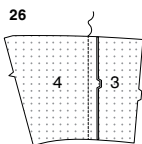
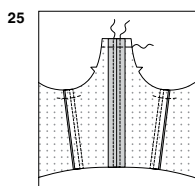
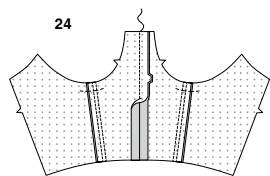
20. To form casing for boning, stitch a generous 1/4" (6mm) each side of side seams through all thicknesses. Baste along upper seamline.

21. Cut a piece of boning the length of each casing (between the seamlines), minus 1/2" (1.3cm). Insert boning into casings; baste along lower seamline. Stitch seams of lining, leaving an opening in one side seam for turning.

UNDERBUST CORSET D

22. With **RIGHT** sides together and raw edges even, pin **FRONT** (1) sections to **SIDE FRONT** (2) sections, matching notches. Stitch. Press seam toward side front.

23. To form casing for boning, stitch side front a generous 1/4" (6mm) from seam through all thicknesses. Baste along upper seamline.



24. With RIGHT sides together and raw edges even, pin front edges together, matching notches. Stitch. Press seam open.

25. To form casing for boning, stitch front a generous 1/4" (6mm) each side of seam through all thicknesses. Baste along upper seamline.

26. With RIGHT sides together and raw edges even, pin BACK (3) to SIDE BACK (4), matching notches. Stitch. Press seam toward back.

27. To form casing for boning, stitch back a generous 1/4" (6mm) from seam through all thicknesses. Baste along upper seamline.

28. With RIGHT sides together and raw edges even, pin back edges together, matching notches. Stitch. Press seam open.

29. To form casing for boning, stitch back a generous 1/4" (6mm) each side of seam through all thicknesses. Baste along upper seamline.

30. Cut a piece of boning the length of each casing (between the seamlines), minus 1/2" (1.3cm). Insert boning into casings; baste along lower seamline. Stitch seams of lining, leaving an opening in center front seam and center back seam for turning.

BUST CUP E

31. Pin interlining to WRONG side of CUP FRONT (5) and CUP SIDE FRONT (6). Baste 1/2" (1.3cm) from raw edges.

32. With RIGHT sides together and raw edges even, pin cup front to cup side front, matching notches. Stitch. Press seam open.

33. On OUTSIDE, **EDGESTITCH** each side of seam through all thicknesses.

BUST CUP F

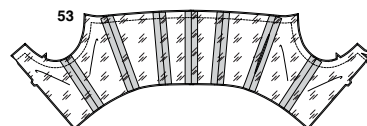
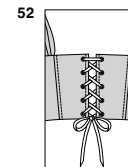
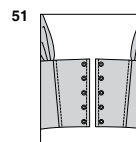
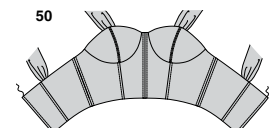
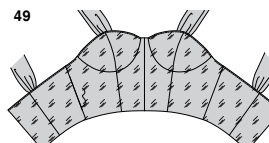
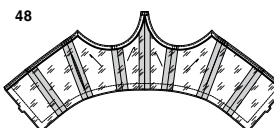
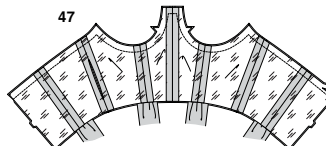
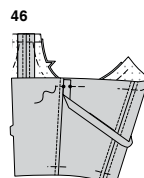
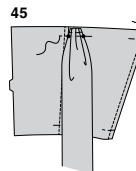
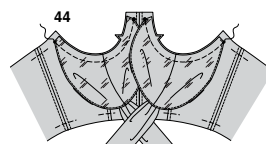
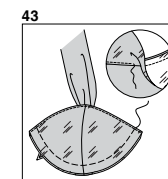
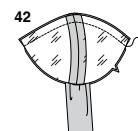
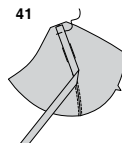
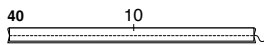
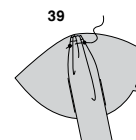
34. Pin interlining to WRONG side of CUP FRONT (7) and CUP SIDE FRONT (8). Baste 1/2" (1.3cm) from raw edges.
TIP: Trim interlining close to stitching.

35. With RIGHT sides together and raw edges even, pin cup front to cup side front, matching notches. Stitch. Press seam open.

36. On OUTSIDE, **EDGESTITCH** each side of seam through all thicknesses.

SHOULDER STRAP G

37. To make each shoulder strap, with RIGHT sides together and raw edges even, pin two shoulder strap (9) sections. Stitch, leaving marked end open. **TRIM SEAM.**



38. Turn strap; press. To **GATHER** end between the small dots, loosen needle tension slightly. On OUTSIDE, stitch 5/8" (1.5cm) from cut edge using a long stitch. Stitch again 1/4" (6mm) from the first stitching within the seam allowance.

39. On OUTSIDE, pin straps to upper edge of cup between the small dots, pulling up gathering stitches to fit. Baste.

SHOULDER STRAP H

40. Fold SHOULDER STRAP (10) in half, lengthwise, with RIGHT sides together. Stitch long edge. **TRIM SEAM.**

41. Turn strap; press.
On OUTSIDE, pin strap to upper edge of cup centering over seam. Baste.

CONTINUE AS FOLLOWS FOR ALL VIEWS

42. Stitch cup front to cup side front lining sections. With RIGHT sides together and raw edges even, pin lining to bust cup along upper edge. Stitch.

43. **UNDERSTITCH** the lining. Turn lining; press. Baste raw edges together.

44. With RIGHT sides together and raw edges even, pin cup to underbust corset, matching seams, small dots, large dots, and notches. Baste.

45. **FOR STRAP G** – On OUTSIDE, pin remaining strap to side back, matching small dots, pulling up gathering stitches to fit. Baste.

46. **FOR STRAP H VIEWS A, B, and C** – On OUTSIDE, pin remaining end of strap to side back, between the small dots. Baste.

FINISHING A

47. With RIGHT sides together and raw edges even, pin underbust corset lining to underbust corset, matching centers and seams. Stitch upper edge. **TRIM SEAM.**

48. **UNDERSTITCH** the lining. With right sides together and raw edges even, pin lower and back edges. Stitch. **TRIM SEAM.**

49. Turn lining through opening in side seam; press. **SLIPSTITCH** opening closed.

50. On OUTSIDE, **TOPSTITCH** back edges 1/4" (6mm) from finished back edge.

51. Make grommet openings on back sections at markings using an awl, or by cutting small holes with an embroidery scissors. Apply grommets following manufacturer's directions.

TIP – Practice applying grommets on a fabric remnant before applying to corset.

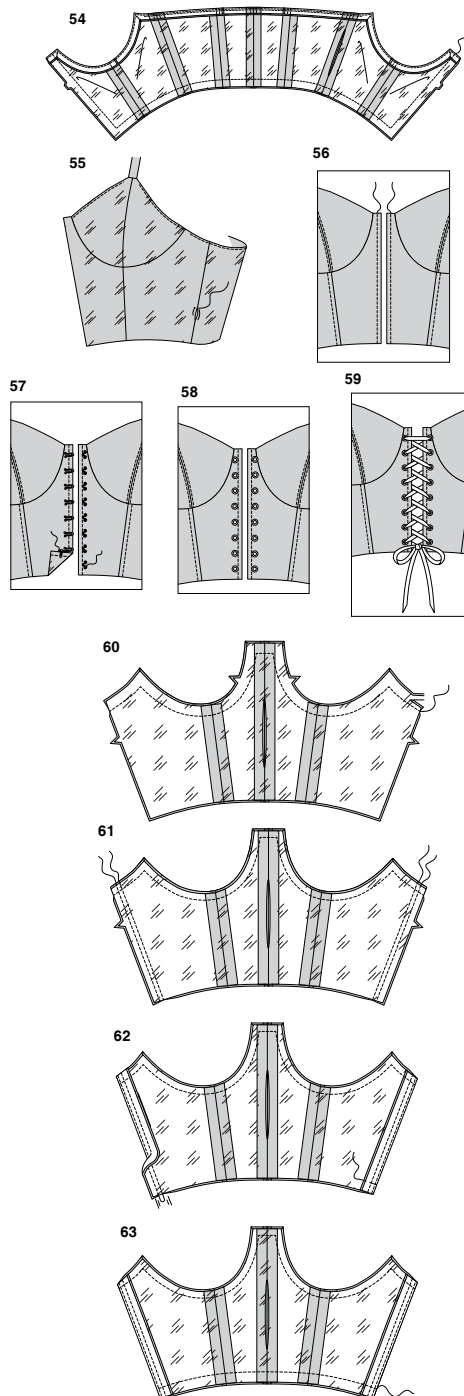
52. Cut a piece of ribbon or cord 80" (203cm) long. Trim ribbon ends diagonally. Thread ribbon through upper grommets, bringing ends to INSIDE, evenly. Lace ribbon through remaining grommets down the back of corset, as shown, and tie into a bow when wearing.

FINISHING B, C

53. With RIGHT sides together and raw edges even, pin underbust corset lining to underbust corset, matching centers and seams. Stitch upper edge. **TRIM SEAM.**

S3095

4 of 4



54. UNDERSTITCH the lining. With right sides together and raw edges even, pin lower and front edges. Stitch. **TRIM SEAM.**

55. Turn lining through opening in side seam; press. **SLIPSTITCH** opening closed.

56. On OUTSIDE, **TOPSTITCH** front edges 1/4" (6mm) from finished front edge.

57. FOR VIEW B – Sew decorative hook sections to RIGHT front at small dots, and loop sections to LEFT front under hooks, as shown.

58. FOR VIEW C – Make grommet openings on front sections at markings using an awl, or by cutting small holes with an embroidery scissors. Apply grommets following manufacturer's directions.
TIP – Practice applying grommets on a fabric remnant before applying to corset.

59. Cut a piece of ribbon or cord 84" (213cm) long. Trim ends of ribbon diagonally. Thread ribbon through upper grommets, bringing ends to INSIDE, evenly. Lace ribbon through remaining grommets down the front of corset, as shown, and tie into a bow when wearing.

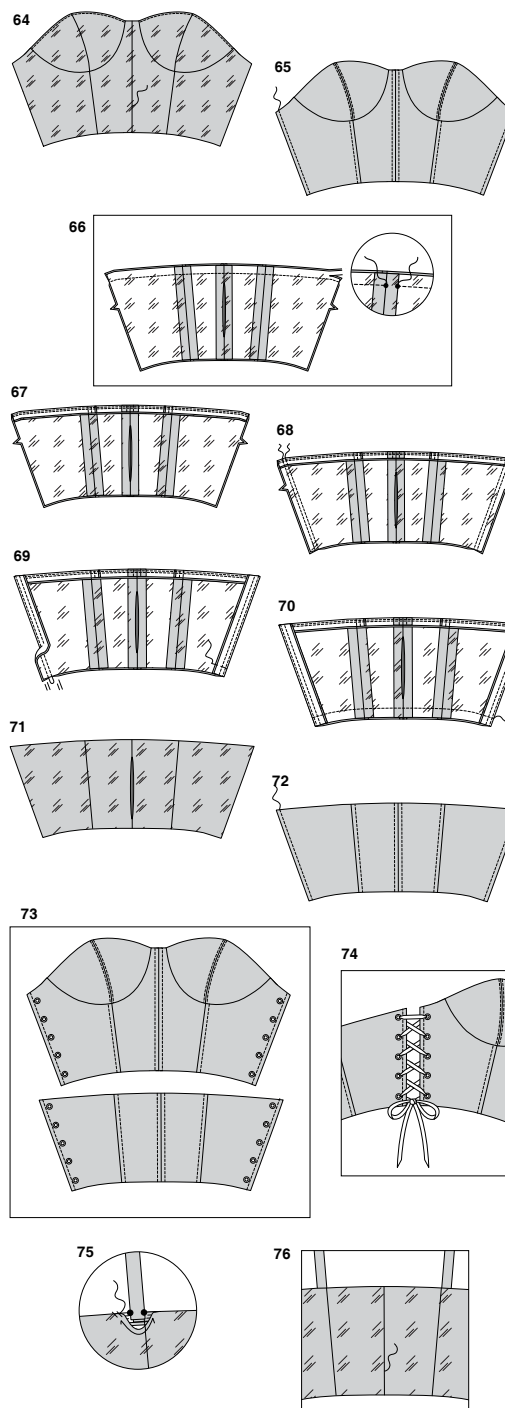
FINISHING D

60. With RIGHT sides together and raw edges even, pin underbust front corset lining to underbust front corset, matching centers and seams. Stitch upper edge. **TRIM SEAM.**

61. With right sides together and raw edges even, pin side edges. Stitch.
To form casing for boning, stitch a generous 1/4" (6mm) from seam, within the seam allowance.

62. Cut a piece of boning the length of each side edge casing (between the seam allowances), minus 1/2" (1.3cm). Thread boning through casing. Turn seam allowance toward corset. Baste across lower edge.

63. With RIGHT sides together and raw edges even, pin underbust front corset lining to underbust front corset, matching centers and seams. Stitch lower edge. **TRIM SEAM.**



64. Turn lining through opening at center seam; press. **SLIPSTITCH** opening closed.

65. On OUTSIDE, **TOPSTITCH** side edges 1/4" (6mm) from finished edge, being careful not to catch in boning.

66. With RIGHT sides together and raw edges even, pin back corset lining to back corset, matching centers and seams. Stitch upper edge, leaving openings between the small dots for optional Strap H. **TRIM SEAM.**

67. FOR STRAP G OR STRAPLESS OPTION – **UNDERSTITCH** the upper edge.

68. CONTINUE AS FOLLOWS FOR BOTH STRAP AND STRAPLESS OPTIONS – With right sides together and raw edges even, pin side edges. Stitch.
To form casing for boning, stitch a generous 1/4" (6mm) from seam, within the seam allowance.

69. Cut a piece of boning the length of each side edge casing (between the seam allowances), minus 1/2" (1.3cm). Thread boning through casing. Turn seam allowance toward corset. Baste across lower edge.

70. With RIGHT sides together and raw edges even, pin back corset lining to back corset, matching centers and seams. Stitch lower edge. **TRIM SEAM.**

71. Turn lining through opening at center seam; press.

72. On OUTSIDE, **TOPSTITCH** side edges 1/4" (6mm) from finished edge, being careful not to catch in boning.

73. Make grommet openings on side sections at markings using an awl, or by cutting small holes with an embroidery scissors. Apply grommets following manufacturer's directions.
TIP – Practice applying grommets on a fabric remnant before applying to corset.

74. Cut a piece of ribbon or cord 54" (137cm) long for each side. Trim ends diagonally. Thread ribbon through upper grommets, bringing ends to INSIDE, evenly. Lace ribbon through remaining grommets down the side of corset, as shown, and tie into a bow when wearing.

75. FOR STRAP H – Try on garment. Pin back end of straps to corset back between small dots. Adjust to fit. Remove garment. On INSIDE, bring strap ends to INSIDE (between corset and lining) through opening in center seam. Hand-stitch opening in seamline closed, catching in straps securely.

76. FOR ALL OPTIONS – On INSIDE, **SLIPSTITCH** opening in lining closed.



Congrats!

You've completed your sewing adventure

SHARE YOUR LOOK



Post your pattern and tag us using [#simplicitypatterns](#)
[@simplicity_creative_group](#)
[@simplicitymccallsuk](#)
[@simplicitymccallsaustralia](#)
for a chance to be featured on our social media.

Look for more PDF patterns at simplicity.com or for customers outside the U.S. and Canada visit sewdirect.com and sewdirect.com.au

Have a question or need help with your sewing project contact us:
Simplicity.com Sewdirect.com Sewdirect.com.au



Simplicity ©2024 a division of IG Design Group Americas Inc. • Atlanta, GA 30342 USA www.thedesigngroup.com • All Rights Reserved. www.simplicity.com • Made in the U.S.A. Fabriqué aux États-Unis.

To be used for individual private home use only and not for commercial or manufacturing purposes. • A usage privé seulement et non à des fins commerciales ou de production en série. • Para uso privado solamente, no se puede utilizar con propósitos de comercialización o de producción en serie.