

S3092

**Simplicity**

Clothes Fit Dolls 18" (45.5cm)



Designed and printed in USA.



Shop all the pattern brands you love @

**Simplicity**.com

For customers outside of the U.S. and Canada

sewdirect.com

sewdirect.com.au

Average

**18" (46CM) DOLL CLOTHES**

**Suggested Fabrics:** A,B,C,D,E and **Contrast F** in Broadcloth, Cotton Lawn, Cotton Types, Crinkled Gauze, Eyelet. **F,G** in Knit Fabrics such as Jersey, Single Knit, Spandex Knit. **Leaf Appliqués A,G** in Felt.

**Notions:** A,B,C,D: ½" (1.3cm) hook and loop tape; 4½" (12cm) length for A, 4" (10cm) length for B, 5" (13cm) length for C,D; A,B,C: ¾ yd. (0.6m) of ¼" (3mm) elastic. **Also for A:** ½ yd. (0.5m) of ¾" (1cm) grosgrain ribbon, 3" (8cm) length of 1" (2.5cm) embroidered flower motif trim (or three 1" (2.5cm) embroidered flowers). **Also for B:** ¼ yd. (0.3m) of ¼" (3mm) ribbon (for bow). **Also for C:** ½ yd. (0.4m) of 1" (2.5cm) embroidered flower motif trim. **Also for D:** One pkg. of ¼" (6mm) double fold bias tape, ¾ yd. (0.7m) of 2½" - 3" (6cm - 8cm) flat eyelet trim. **E:** ¾ yd. (0.3m) of ¼" (6mm) elastic. **F:** ¾ yd. (0.3m) of ¼" (3mm) elastic. **G:** 3" (8cm) length of 1" (2.5cm) embroidered flower motif trim (or three 1" (2.5cm) embroidered flowers).

**Dress A**

45\*\* - ¾ yd. (115cm\* - 0.3m)

**Leaf Base** - 3" x 4" (7cm x 9cm) felt remnant

**Tunic B**

45\*\* - ¾ yd. (115cm\* - 0.3m)

**Top C,D**

45\*\* - ¾ yd. (115cm\* - 0.3m)

**Skirt E**

45\*\* - ¼ yd. (115cm\* - 0.2m)

**Contrast (Middle Tier)**

45\*\* - ¼ yd. (115cm\* - 0.2m)

**Pants F**

45\*\* - ¾ yd. (115cm\* - 0.3m)

**Contrast (Ruffles)**

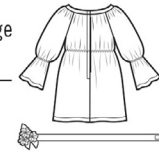
45\*\* - ¼ yd. (115cm\* - 0.2m)

**Headband G**

4" x 13" (9cm x 33cm) remnant

**Leaf Base**

3" x 4" (7cm x 9cm) felt remnant



A



B



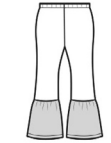
C



D



E



F

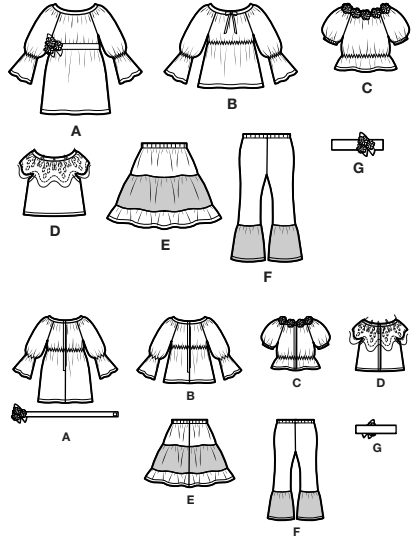


G

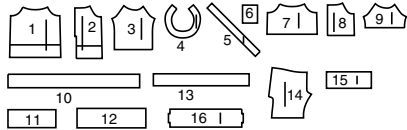
\*with nap \*\*without nap

# Simplicity® S3092

Thank you for purchasing this Simplicity pattern. We made every effort to provide you with a high quality product.

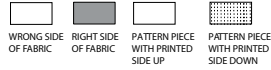


16 PIECES



- 1 FRONT - A,B
- 2 BACK - A,B
- 3 SLEEVE - A,B
- 4 FACING - A,B,C,D
- 5 BINDING - A,B,C,D
- 6 BASE - A,G
- 7 FRONT - C,D
- 8 BACK - C,D
- 9 SLEEVE - C
- 10 GUIDE FOR NECK RUFFLE - D
- 11 UPPER TIER - E
- 12 MIDDLE TIER - E
- 13 LOWER TIER - E
- 14 PANTS - F
- 15 RUFFLE - F
- 16 HEADBAND - G

## Cutting Layouts



POSITION OF PATTERN PIECES MAY VARY SLIGHTLY ACCORDING TO YOUR PATTERN SIZE

### General Directions For Cutting

**PRE-SHRINK** and iron all fabric.

**FOR DOUBLE THICKNESS** -Fold fabric with **RIGHT** sides together. Pin pattern to **WRONG** side of fabric.

**FOR SINGLE THICKNESS** -Pin pattern to **RIGHT** side of fabric.

★ If layout shows a piece extending past fold, cut out all pieces except piece that extends. Open out fabric to single thickness. Cut extending piece on **RIGHT** side of fabric in position shown.

✱ Mark small arrows along both selvages in dictating direction of nap or design. Fold fabric crosswise with **RIGHT** sides together, and cut along fold. Turn one fabric layer around so arrows on both layers go in the same direction. Place **RIGHT** sides together.

### DRESS A OR TUNIC B

USE PIECES 1 2 3 4 5

45" (115CM) WITH NAP



### TOP C

USE PIECES 4 5 7 8 9

45" (115CM) WITH NAP



### TOP D

USE PIECES 4 5 7 8

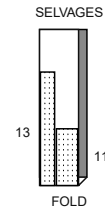
45" (115CM) WITH NAP



### SKIRT E

USE PIECES 11 13

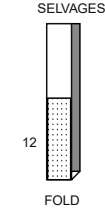
45" (115CM) WITH NAP



### CONTRAST E (MIDDLE TIER)

USE PIECE 12

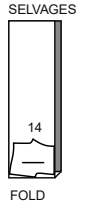
45" (115CM) WITH NAP



### PANTS F

USE PIECE 14

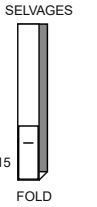
60" (150CM) WITH NAP



### CONTRAST F (LEG RUFFLES)

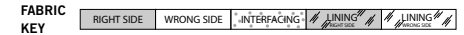
USE PIECE 15

45" (115CM) WITH NAP



**HEADBAND G** - CUT ONE OF PIECE 16 FROM FABRIC REMNANT

## Sewing Directions



Read **General Directions** before you begin.

### GLOSSARY OF SEWING METHODS

Sewing methods shown in **BOLD** are defined below:

**GATHER** – Loosen needle tension slightly. On **OUTSIDE**, stitch 1/4" (6mm) from cut edge using a long stitch. Stitch again 1/8" (3mm) from the first stitching within the seam allowance.

**EDGE FINISH** – Stitch 1/8" (3mm) from edge, zigzag stitch, or overlock/serge raw edges, or leave raw.

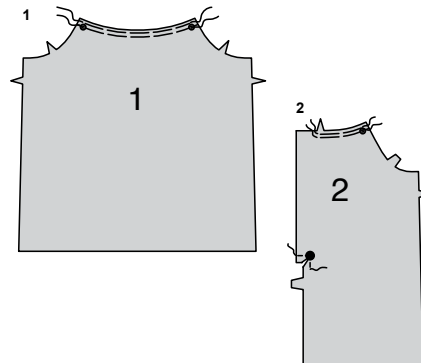
**PATTERN PIECES WILL BE IDENTIFIED BY NUMBERS THE FIRST TIME THEY ARE USED.**

**STITCH 1/4" (6MM) SEAMS WITH RIGHT SIDES TOGETHER UNLESS OTHERWISE STATED.**

SEWING TUTORIALS

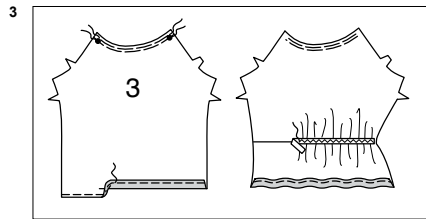


Build your skills viewing short, easy-to-follow videos at [simplicity.com/sewingtutorials](http://simplicity.com/sewingtutorials)

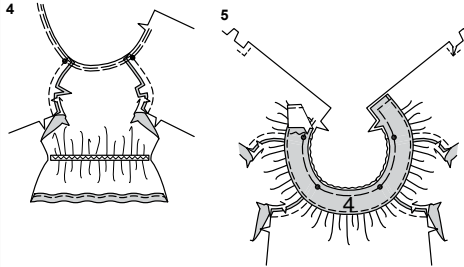


### DRESS A, TUNIC B

- 1. GATHER** neck edge of **FRONT** (1) between the small dots.
- 2. GATHER** neck edge of **BACK** (2) between the small dot and notch. To reinforce **RIGHT** center back at the large dot, stitch along seam line for about 1/2" (1.3cm) each side of large dot, stitching through dot, as shown. Clip to stitching at dot.

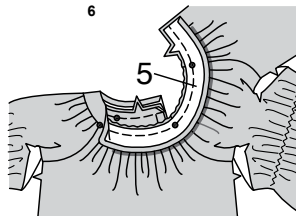


- 3. GATHER** neck edge of SLEEVE (3) between the small dots.  
**EDGE FINISH** lower edge of sleeve. Press up 3/8" (1cm) hem allowance. Stitch 1/4" (6mm) from pressed edge.  
 Cut a piece of 1/8" (3mm) elastic 4" (10cm) long. On **INSIDE**, pin elastic centered on stitching line for elastic with raw edges even. Stitch along center of elastic, using a zigzag stitch or stretch stitch, stretching the elastic while stitching.

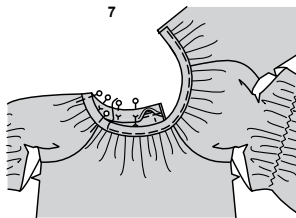


- 4.** With **RIGHT** sides together and raw edges even, pin sleeve to front and back sections along armhole edges, matching small dots and notches. Stitch. Trim seam; clip curves.

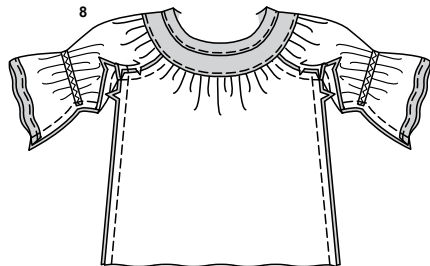
- 5.** To finish unmarked edge of **FACING** (4), stitch a scant 1/8" (3mm) from raw edge.  
 On **INSIDE**, pin facing to garment with **WRONG** sides together, matching small dots and notches, pulling up gathering stitches to fit. Baste neck and back edges.



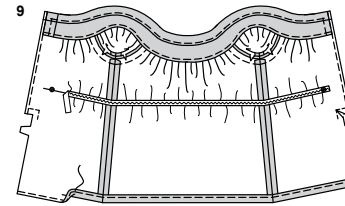
- 6.** Press under 1/4" (6mm) on unmarked edge of **BINDING** (5).  
 On **OUTSIDE**, pin binding to neck edge of garment with **RIGHT** sides together, matching small dots and notches. Stitch. Trim seam; clip curves.  
 Press binding out, pressing seam toward binding.



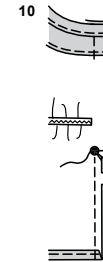
- 7.** On **INSIDE**, pin pressed edge of binding just over seam, placing pins on **OUTSIDE**. On **OUTSIDE**, stitch binding close to seam, catching in pressed edge of binding on the **INSIDE**.



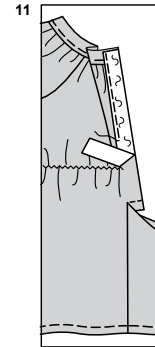
- 8.** Stitch front to back at entire underarm edges, matching armhole seams.



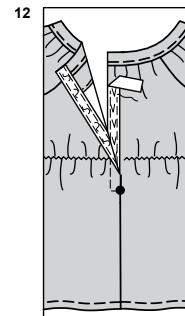
- 9. EDGE FINISH** lower edge of garment. Press up 3/8" (1cm) hem allowance. Stitch 1/4" (6mm) from pressed edge.  
 Cut a piece of 1/8" (3mm) wide elastic 10-1/2" (27.3cm) long for View A or 11" (28cm) long for View B. On **INSIDE**, pin elastic centered on stitching line for elastic with raw edges even. Stitch along center of elastic, using a zigzag stitch or stretch stitch, stretching the elastic between the small dots while stitching.  
**EDGE FINISH** back edges of garment.



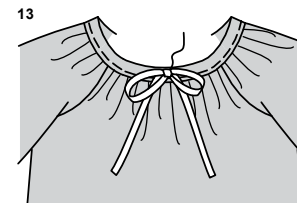
- 10.** Stitch center back edges of garment from lower edge to large dot, back-stitching at dot to reinforce the seam.



- 11.** Cut a piece of 1/2" (1.3cm) wide hook and loop tape 4" (10cm) long. Separate the tape.  
 On **OUTSIDE**, pin loop section of tape to **LEFT** back extension, having outer edge of tape even with raw edge of garment. Stitch close to edges of tape.



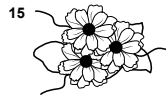
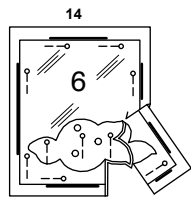
- 12.** Turn **LEFT** back extension to **INSIDE** along center line; press. On **OUTSIDE**, stitch 3/8" (1cm) from pressed edge, ending across from large dot.  
 On **OUTSIDE**, pin hook section of tape to **RIGHT** back extension, having outer edge of tape even with raw edge of garment. Stitch close to edges of tape.  
 Lap **LEFT** back over **RIGHT** back, matching centers, square stitching at large dot connecting to previous stitching.



- 13. FOR VIEW B** - Tie 1/8" (3mm) wide ribbon into a bow and tack to neck binding at center front. Trim ends as desired.

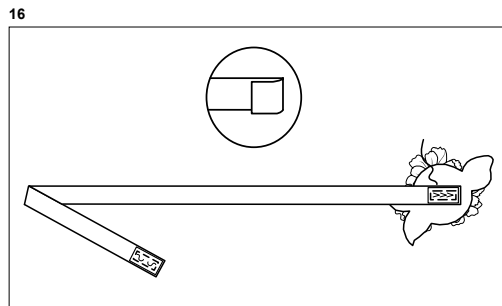
**S3092**

3 of 5

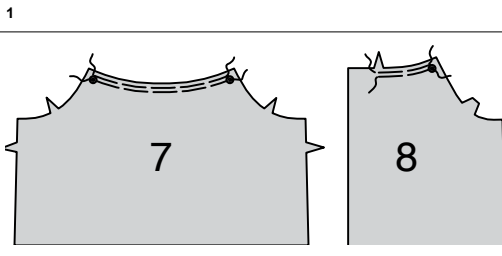
**BELT A**

**14.** Pin BASE (6) pattern to RIGHT side of felt remnant. Cut along solid line. Transfer markings to RIGHT side of felt using a washable fabric marking pen or pencil.

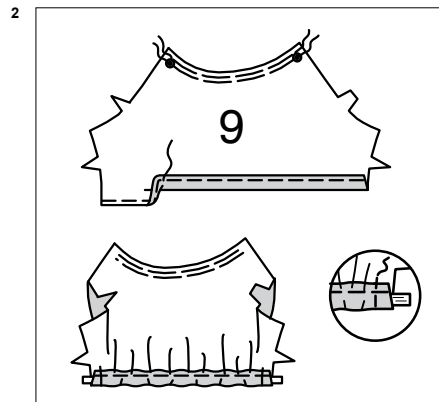
**15.** Use three loose 1" (2.5cm) purchased embroidered flowers or separate three 1" (2.5cm) flowers from a section of floral embroidered trim, and tack each flower to the base, lapping petals and placing centers at small dots.



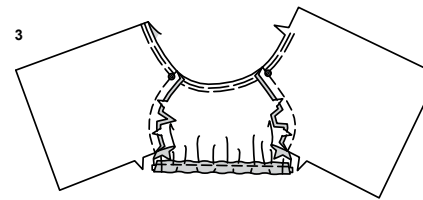
**16.** Cut a piece of 1/2" (1.3cm) wide hook and loop tape 3/8" (1cm) long. Separate the tape. Cut a piece of 3/8" (1cm) grosgrain ribbon 12-3/4" (32.5cm) long. Turn ends of ribbon to OUTSIDE 1/2" (1.3cm); press. Pin hook section of tape to end (over pressed end). Stitch close to edges of tape. Pin loop section of tape to INSIDE of opposite end. Stitch close to edges of tape. Pin RIGHT side of ribbon to back of base. Hand-tack or glue in place. Wrap belt around waist of dress and bringing hook and loop ends together after dressing doll.

**TOP C, D**

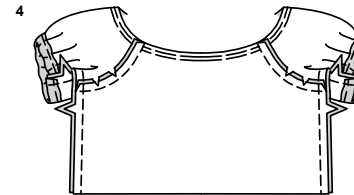
**1.** GATHER neck edge of FRONT (7) between the small dots, and BACK (8) between small dot and notch.

**SLEEVE C**

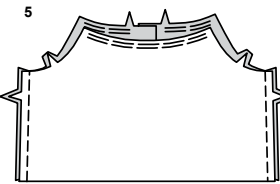
**2.** GATHER neck edge of SLEEVE (9) between the small dots.  
**EDGE FINISH** lower edge of sleeve. To form casing for elastic, press up lower edge 3/8" (1cm). Stitch 1/4" (6mm) from pressed edge. Cut a piece of 1/8" (3mm) elastic 4-1/4" (11cm) long. Thread elastic through casing bringing raw edges even. Stitch in place along seamline.



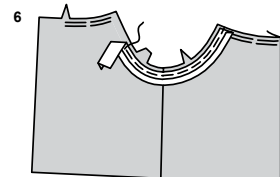
**3.** With RIGHT sides together and raw edges even, pin sleeve to front and back sections along armhole edges, matching small dots and notches. Stitch. Trim seam; clip curves.



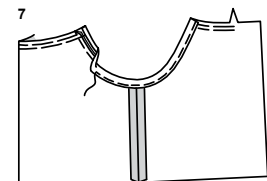
**4.** Stitch front to back at entire underarm edges, matching armhole seams.

**ARMHOLE D**

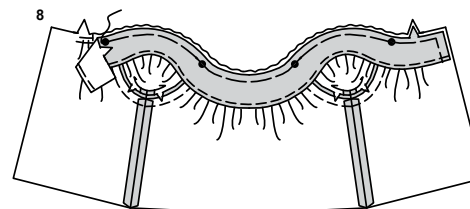
**5.** Stitch front to back at side edges.



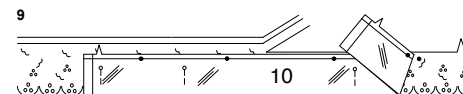
**6.** Cut a piece of 1/4" (6mm) double fold bias tape the length of the armhole edge for each armhole. Open out the center fold of tape and press lightly. With RIGHT sides together, pin tape to armhole edge placing center crease along the 1/4" (6mm) seamline. Stitch. Trim seam; clip curves.



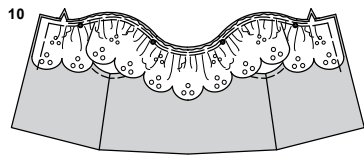
**7.** Turn tape to INSIDE; press. Stitch close to inner edge of tape.

**CONTINUE AS FOLLOWS FOR BOTH VIEWS**

**8.** To finish unmarked edge of FACING (4), stitch a scant 1/8" (3mm) from raw edge. On INSIDE, pin facing to garment with WRONG sides together, matching small dots and notches, pulling up gathering stitches to fit. Baste neck and back edges.



**9.** FOR VIEW D - Pin GUIDE FOR NECK RUFFLE (10) to a piece of eyelet trim with lower edge of trim along unmarked edge. Cut trim along outer solid lines. Transfer markings.

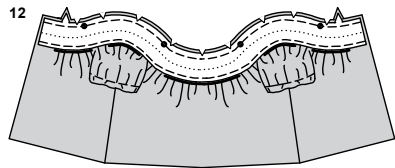


**10. GATHER** upper edge of trim between the notches. On OUTSIDE, pin trim to neck edge with raw edges even, matching small dots and notches, pulling up gathering stitches to fit. Baste neck and back edges.

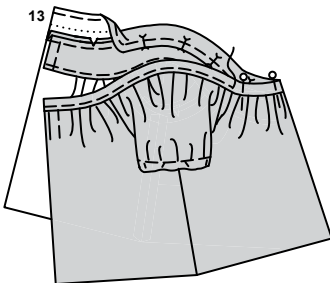
#### CONTINUE AS FOLLOWS FOR BOTH VIEWS



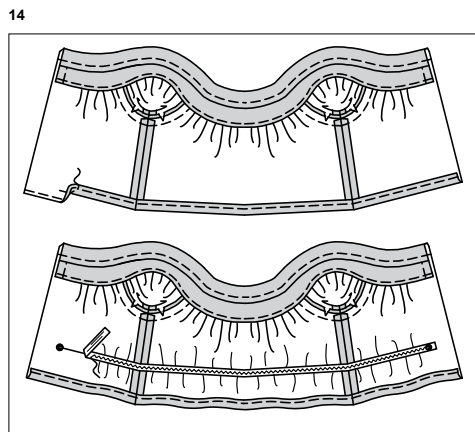
**11. EDGE FINISH** unmarked edge of BINDING (5). Fold binding in half, lengthwise; press, setting in a crease.



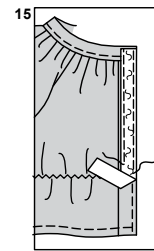
**12.** Open out the binding. On OUTSIDE, pin binding to neck edge of garment with RIGHT sides together, matching small dots and notches. Stitch. Trim seam; clip curves.



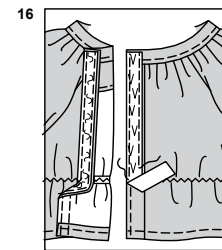
**13.** Turn binding to inside along crease line, pin in place, placing pins on OUTSIDE. On OUTSIDE, stitch binding close to seam, catching in free edge of binding on the INSIDE.



**14. EDGE FINISH** lower edge of garment. Press up 3/8" (1cm) hem allowance. Stitch 1/4" (6mm) from pressed edge.  
**FOR VIEW C** - Cut a piece of 1/8" (3mm) elastic 10-1/2" (27.3cm) long. On INSIDE, pin elastic centered on stitching line for elastic with raw edges even. Stitch along center of elastic, using a zigzag stitch or stretch stitch, stretching the elastic between the small dots while stitching.



**15. EDGE FINISH** back edges of garment. Cut a piece of 1/2" (1.3cm) wide hook and loop tape 5" (12.5cm) long. Separate the tape. On OUTSIDE, pin loop section of tape to LEFT back edge, having outer edge of tape even with raw edge of garment. Stitch close to edges of tape.

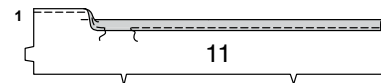


**16.** Turn LEFT back extension to INSIDE along center line; press. On OUTSIDE, stitch 3/8" (1cm) from pressed edge. On OUTSIDE, pin hook section of tape to RIGHT back edge, having outer edge of tape even with raw edge of garment. Stitch close to edges of tape. To dress doll, lap LEFT back over RIGHT back, matching centers.

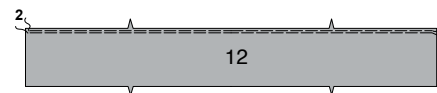


**17. FOR VIEW C** - Cut a piece of 1" (2.5cm) wide embroidered flower trim the length of the neck edge. Pin trim to garment lapping neck edge 1/8" (3mm). Tack in place, invisibly.

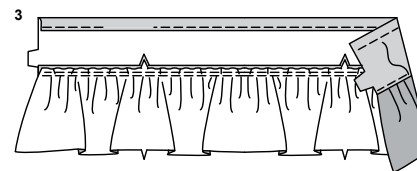
#### SKIRT E



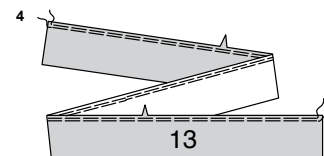
**1. EDGE FINISH** upper edge of UPPER TIER (11). To form casing for elastic, turn upper edge to INSIDE 1/2" (1.3cm); press. Stitch 3/8" (1cm) from pressed edge, leaving an opening to insert elastic.



**2. GATHER** upper edge of MIDDLE TIER (12) between back seamlines.



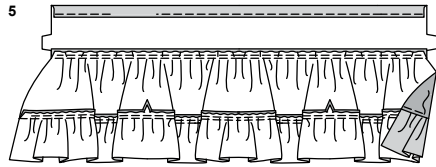
**3.** With RIGHT sides together and raw edges even, pin middle tier to upper tier, matching centers and notches, pulling up gathering stitches to fit. Stitch. Press seam toward upper tier, pressing middle tier out. On OUTSIDE, edgestitch upper tier close to seam.



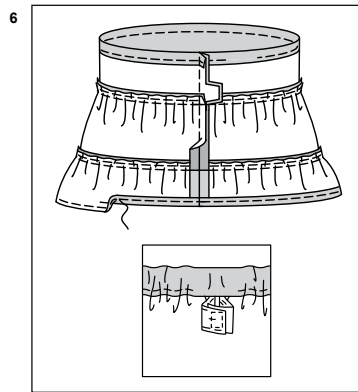
**4. GATHER** upper edge of LOWER TIER (13) between back seamlines.

## S3092

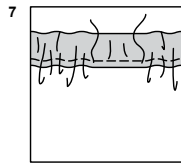
5 of 5



5. With **RIGHT** sides together and raw edges even, pin lower tier to middle tier, matching centers and notches, pulling up gathering stitches to fit. Stitch. Press seam toward middle tier, pressing lower tier out. On **OUTSIDE**, edgestitch middle tier close to seam.

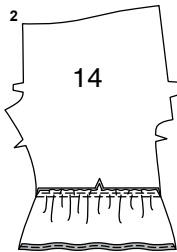
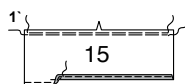


6. Stitch center back edges of skirt together. **EDGE FINISH** lower edge of garment. Press up 3/8" (1cm) hem allowance. Stitch 1/4" (6mm) from pressed edge. Cut a piece of 1/4" (6mm) wide elastic 10-1/2" (27.3cm) long. Thread elastic through opening in casing, lapping ends 1/4" (6mm). Stitch ends of elastic together securely.



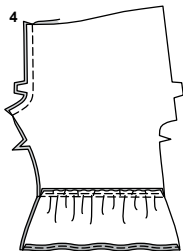
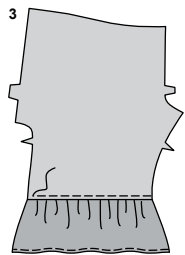
7. Stitch opening closed.

## PANTS F



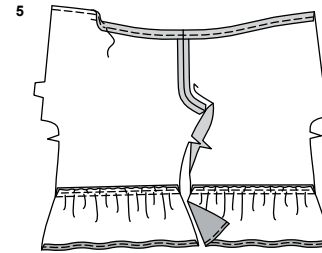
1. **GATHER** upper edge of **RUFFLE** (15) between seamlines. **EDGE FINISH** lower edge. Press up lower edge 1/4" (6mm). Stitch 1/8" (3mm) from pressed edge.

2. Pin upper edge of ruffle to lower edge of **PANTS** (14), matching notches, pulling up gathering stitches to fit. Stitch. Press seam toward pants, pressing ruffle out.

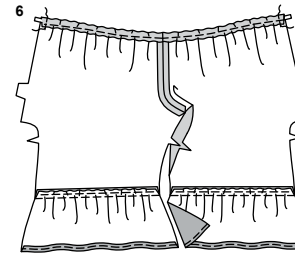


3. On **OUTSIDE**, stitch pants close to seam.

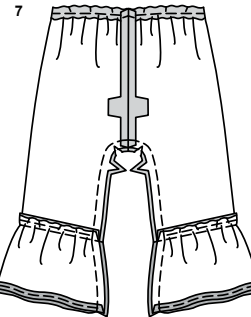
4. Stitch center front edges of pants.



5. **EDGE FINISH** upper edge of pants. To form casing for elastic, turn upper edge to **INSIDE** 3/8" (1cm); press. Stitch 1/4" (6mm) from pressed edge.

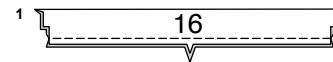


6. Cut a piece of 1/8" (3mm) wide elastic 10-1/2" (27.3cm) long. Thread elastic through casing. Stitch across ends, securely.



7. Stitch center back edges of pants. Stitch inner leg edges. Trim seam; clip curves.

## HEADBAND G



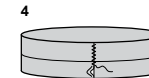
1. With **RIGHT** sides together and raw edges even, pin long, notched edges of **HEADBAND** (16). Stitch.



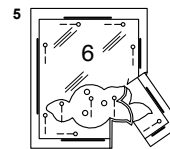
2. Turn headband; press, pressing along foldlines, bringing seam to center.



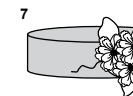
3. Pin notched ends of headband with **RIGHT** sides together. Stitch, keeping facing edges free.



4. On **UNDERSIDE**, abut facing edges together. Zigzag stitch across facing edges through all thicknesses.



5. Pin **BASE** (6) pattern to **RIGHT** side of felt remnant. Cut along solid line. Transfer markings to **RIGHT** side of felt using a washable fabric marking pen or pencil.



6. Use three loose 1" (2.5cm) purchased embroidered flowers or separate three 1" (2.5cm) flowers from a section of floral embroidered trim, and tack each flower to the base, lapping petals and placing centers at small dots.

7. On **OUTSIDE**, pin base to headband over seam. Tack in place, invisibly.



# Congrats!

You've completed your sewing adventure

---

## SHARE YOUR LOOK



Post your pattern and tag us using [#simplicitypatterns](#)  
[@simplicity creative group](#)  
[@simplicitymccallsuk](#)  
[@simplicitymccallsaustralia](#)  
for a chance to be featured on our social media.

Look for more PDF patterns at [simplicity.com](#) or for customers outside the U.S. and Canada visit [sewdirect.com](#) and [sewdirect.com.au](#)

Have a question or need help with your sewing project contact us:  
[Simplicity.com](#)    [Sewdirect.com](#)    [Sewdirect.com.au](#)



Simplicity ©2024 a division of IG Design Group Americas Inc. • Atlanta, GA 30342 USA [www.thedesigngroup.com](#) • All Rights Reserved. [www.simplicity.com](#) • Made in the U.S.A. Fabriqué aux États-Unis.

To be used for individual private home use only and not for commercial or manufacturing purposes. • A usage privé seulement et non à des fins commerciales ou de production en série. • Para uso privado solamente, no se puede utilizar con propósitos de comercialización o de producción en serie.