

S3084

Simplicity®

1960s  
Vintage

easy-to-sew

Designed and  
printed in USA.

Easy

## MISSES' CAPE AND DRESS

**Suggested Fabrics:** Cotton and Cotton Blends, Double Knits, Homespun, Linen, Pique, Silk and Worsted, Silks, Synthetics and Blends, Tweed, Wool Flannel, Wool Gabardine, Wools and Wool Blends. **Lining:** Lining Fabric. **Interfacing:** Lightweight Non-Fusible.

**Notions:** Dress and Cape: Seam binding. Also for Dress: One 22" (56cm) zipper, belt (opt.). Also for Cape: Two ¾" (2.2cm) buttons.

Sizes	6	8	10	12	14	16	18	20	22
European	32	34	36	38	40	42	44	46	48

## BODY MEASUREMENTS: Select pattern size based on body measurements

Bust	30½	31½	32½	34	36	38	40	42	44	Ins.
Waist	23	24	25	26½	28	30	32	34	37	"
Hip-9" below waist	32½	33½	34½	36	38	40	42	44	46	"
Back-neck to waist	15½	15¾	16	16¼	16½	16¾	17	17¼	17½	"

Dress	45**	2%	2%	2%	2%	2%	2%	2%	3%	3%	Yds.
60**	1%	1%	1%	1%	2	2	2	2%	2%	"	
Lining	45***	2¼	2%	2%	2½	2%	2%	2%	2%	2%	"
Interfacing	20"	-	¾ yd.								
Cape	45**	4½	4%	4%	4%	4%	4%	4%	4%	4%	Yds.
60**	2%	2%	2%	2%	2%	2%	3	3	3%	"	
Lining	45***	2%	2%	2%	2%	2%	2%	2%	2%	2%	"
Interfacing	20"	-	1½ yds.								

## FINISHED GARMENT MEASUREMENTS (Includes Design and Wearing Ease)

Bust	35	36	37	38½	40½	42½	44½	46½	48½	Ins.
Waist	30½	31½	32½	34¼	36¼	38¼	40¼	42¼	44¼	"
Hip	39¼	40¼	41¼	42½	44¼	46¼	48¼	50¼	52¼	"
Width, lower edge										
Dress	46½	47½	48½	50	52	54	56	58	60	Ins.
Finished back length from base of neck										
Dress	38½	38¾	39	39¼	39½	39¾	40	40¼	40½	Ins.
Cape	39	39¼	39½	39¾	40	40¼	40¾	40¾	41	"

\*with nap \*\*without nap

Facile

## CAPE ET ROBE POUR JEUNES FEMMES

**Tissus Conseillés:** Coton et Cotonnades, Tricotés doubles, Tissu homespun, Toile de Lin, Piqué, Soie et laine peignée, Mélanges de fibres synthétiques, Tweed, Flannelle de laine, Gabardine de laine, Laines et Mélanges de laine. **Doublure:** Tissu à doublure. **Entoilage:** Léger non-thermocollant.

**Mercerie:** Robe et cape: Extra-fort. Aussi pour Robe: 1 fermeture à glissière de 56cm, ceinture (facultatif). Aussi pour Cape: 2 boutons de 2.2cm.

Tailles	6	8	10	12	14	16	18	20	22
Françaises	34	36	38	40	42	44	46	48	50
Européen	32	34	36	38	40	42	44	46	48

## MESURES DU CORPS: Choisissez la taille du patron basée sur les mesures du corps

Poitrine	78	80	83	87	92	97	102	107	112	cm
Taille	58	61	64	67	71	76	81	87	94	"
Hanches (23cm au-dessous de la taille)										

Dos du cou à la taille	83	85	88	92	97	102	107	112	117	cm
	39.5	40	40.5	41.5	42	42.5	43	44	44	"

Robe	115cm*	2.4	2.4	2.5	2.5	2.5	2.6	2.9	3.0	m
	150cm*	1.7	1.7	1.7	1.7	1.7	1.8	2.2	2.2	"

Lining	115cm**	2.1	2.2	2.3	2.3	2.3	2.4	2.4	2.4	"
Entoilage	51cm - 0.6m									

Cape	115cm*	4.1	4.2	4.2	4.2	4.3	4.3	4.5	4.5	m
	150cm*	2.4	2.4	2.4	2.4	2.4	2.4	2.7	2.7	"

Doublure	115cm**	2.4	2.4	2.4	2.4	2.4	2.4	2.4	2.5	"
Entoilage	51cm - 1.3m									

## MESURES DES VÊTEMENTS FINI (Motif et aisance de port compris)

Poitrine	89	91	94	98	103	108	113	118	123	cm
Taille	78	81	83	87	92	97	102	107	112	"
Hanches	100	102	105	109	114	119	124	129	134	"

## Largeur à l'ourlet

Robe	118	121	123	127	132	137	142	147	152	cm
Longueur finie - dos, votre nuque à l'ourlet										

Robe	98	98	99	100	100	101	102	102	103	cm
Cape	99	100	100	101	102	102	103	104	105	"

\*\*avec sens \*\*sans sens



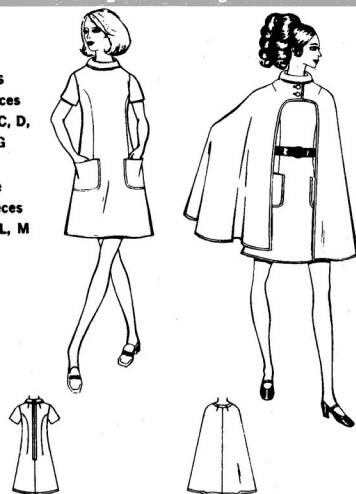
# Simplicity 8642

## "DESIGNER FASHION"

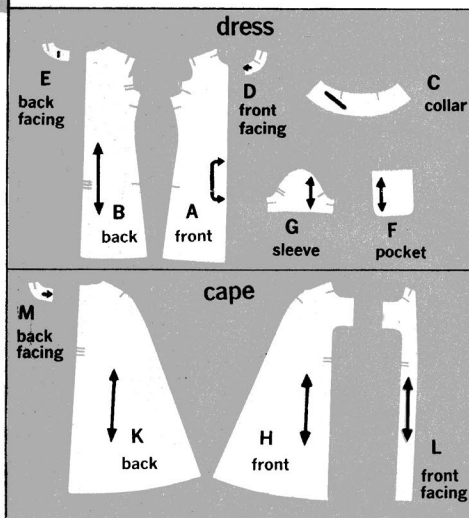
cutting and sewing directions

dress  
7 pieces  
A, B, C, D,  
E, F, G

cape  
4 pieces  
H, K, L, M



## select your pattern pieces according to the view you have chosen 11 pieces given



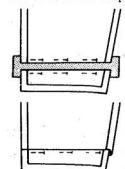
## How to use your Simplicity Pattern

Read all directions carefully before beginning to work

### 1. Prepare your pattern

Select the pattern pieces for the view you plan to make from the box to the left. Do not cut away margins.

This pattern is made to body measurements with ease allowed for style, fit and comfort. Check your back waist and dress length. If necessary, alter the pattern before placing it on fabric. Lengthening and shortening lines are indicated on pattern.



**TO LENGTHEN:** Cut pattern between printed lines. Place paper underneath. Spread pattern the necessary amount and pin to paper.

**TO SHORTEN:** At the printed line, pin a pleat half the amount to be shortened. (i.e. 1/2" deep to shorten 1".)

See Simplicity Sewing Book for other pattern alterations.

### 2. Prepare your fabric

Press fabric. Unless fabric is pre-shrunk, shrink before cutting.

**STRAIGHTEN ENDS:** Clip one selvage and tear fabric or pull a crosswise thread and cut across fabric.

**STRAIGHTEN UNEVEN GRAIN:** Pull fabric on the bias in opposite direction until crosswise threads are straight and squared with selvages. This cannot be done on permanent finish fabrics.



### 3. Know your pattern markings

**STRAIGHT GRAIN:** Place an even distance, from selvage or a straight thread.

**FOLD GRAIN:** Place on fold of fabric.

**CUTTING LINE**

**LENGTHENING AND SHORTENING LINES**

**STITCHING LINES:** For darts, seams, etc.

**SEAM ALLOWANCE:** 5/8" unless otherwise stated.

**NOTCHES:** Blocked in for easier cutting; match notches with same numbers.

### 4. Laying out and cutting your pattern

Circle cutting layout for View, Size and Fabric width.

**FOR DOUBLE THICKNESS:** Fold fabric with RIGHT side INSIDE and place pattern on WRONG side of fabric.

**FOR SINGLE THICKNESS:** Place pattern on RIGHT side of fabric.

**FOR NAP OR ONE WAY DESIGN FABRICS:** Use "with nap" cutting layout.

Before cutting, place all pattern pieces on fabric, following cutting layouts. Margins may be overlapped when placing pattern on fabric. When duplicate pattern pieces are cut separately, the second piece is reversed and shown as a white outline.

Cut thru pattern and fabric on cutting lines; cut notches out from cutting lines. Margins will fall away as you cut.

### 5. Mark your fabric

Before removing pattern, transfer markings to WRONG side of fabric with tracing wheel and dressmaker's tracing paper.

**FOR SINGLE THICKNESS:** Place one sheet of tracing paper face up under WRONG side of fabric.

**FOR DOUBLE THICKNESS:** Place one sheet of tracing paper face up under fabric; place another sheet face down under pattern.

See Simplicity Sewing Book for "chalk-marking" and Tailor's-tacks.

Do not remove pattern from fabric until you are ready to sew.

### 6. Sewing your garment

**READ DIRECTIONS** on pattern pieces as you work.

**STAY-STITCH:** Machine-stitch thru single thickness of fabric to prevent stretching of bias or curved edges—done on seam line or 1/8" from seam line within seam allowance. Stay-stitching is shown only the first time a section of garment is illustrated.

**PIN or BASTE SEAMS:** Match notch 1 to 1, 2 to 2, etc. (Baste by hand or machine using a long stitch.)

**STITCH SEAMS:** In direction shown by arrows on pattern.

**PRESS SEAMS:** Open, unless otherwise stated. See Simplicity Sewing Book for additional sewing details.

## NEW Sizing

**BEFORE YOU CUT**—be sure to compare your body measurements with **THE NEW MEASUREMENT CHART** on the back of the pattern envelope. You may wish to make minor fitting adjustments.

### Black area represents fabric

**GENERAL NOTE:** When pattern pieces extend beyond fold of fabric, cut out all pieces except pieces that extend; then open out fabric and on single thickness, cut extending pieces on right side of fabric in position shown.

### dress

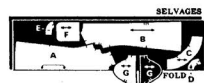
35" 36" fabric  
without nap  
sizes 10, 12, 14



35" 36" fabric  
without nap  
sizes 16, 18



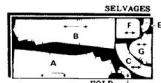
44" 45" fabric  
without nap  
sizes 10, 12



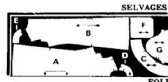
44" 45" fabric  
without nap  
sizes 14, 16, 18



54" fabric  
without nap  
sizes 10, 12, 14, 16



54" fabric  
without nap  
size 18



### construction lining for dress

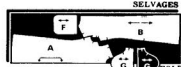
35" 36" 39" fabric  
without nap  
sizes 10, 12, 14



35" 36" 39" fabric  
without nap  
sizes 16, 18



44" 45" fabric  
without nap  
sizes 10, 12



44" 45" fabric  
without nap  
sizes 14, 16, 18



### dress interfacing

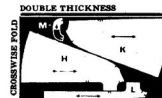
25" 32" 35" 36"  
fabric  
all sizes



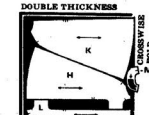
### cape

NOTE: Cut 1" by M.

35" 36" fabric  
without nap  
all sizes



44" 45" fabric  
without nap  
sizes 10, 12, 14



44" 45" fabric  
without nap  
sizes 16, 18



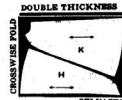
54" fabric  
without nap  
all sizes



### cape lining

NOTE: After cape has been cut, trim patterns H and K along cutting lines for lining. Trim away 1" from lower edges of patterns H and K. Cut lining by altered patterns.

35" 36" 39" fabric  
without nap  
all sizes



44" 45" fabric  
without nap  
all sizes



### cape interfacing

NOTE: Front Interfacing - Cut 2" by L, plus 1/2" on long unnotched edge and less 2" on lower edge.  
Back Interfacing - Cut 1" on fold by M, plus 1/2" on long unnotched edge.

25" 32" 35" 36"  
fabric  
all sizes



## sewing directions

Shaded area is right side of fabric

NOTE: Stitch 5/8" seams, unless otherwise stated, matching same numbered notches.

NOTE: When pinning interfacings in place, trim outer corners of interfacing diagonally, as shown in drawings.

NOTE: The 1/2" top-stitching is optional.

### dress

NOTE: For heavy fabrics, seam binding may be used to encase inner edges of facing.

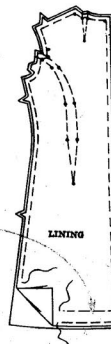
### UNIT 1 construction lining

Pin lining to WRONG side of front, back, sleeves and pockets; matching centers, dart lines and small and medium dots •, having raw edges even.

Machine-stitch just INSIDE the broken lines of darts and 1/2" from all raw edges.

Machine-stitch 2" above lower edges of front and back.

(This stitching will be on underside when dress is finished.)



DIRECTIONS CONTINUED ON OTHER SIDE

# 8642 sewing directions continued from other side

## UNIT 2 front

To make darts, slash along solid lines, as shown.

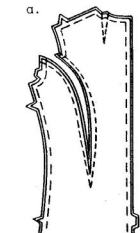
Clip edge nearest center front to stitching between medium dots ●, as shown.

On INSIDE, bring broken lines together, carefully matching small and medium dots ●, easing edge nearest center front to fit between medium dots ●. Baste.

Stitch along broken lines. Clip curves; press darts open.

## UNIT 3 back

a—To make shaped darts, slash along solid lines.



b—On INSIDE, bring broken lines together, carefully matching small dots ●. Baste. Stitch along broken lines.

Clip curves; press darts open.

Make remaining darts; press toward center.

Stitch center back seam to medium dot ●.

## zipper

Press under 5/8" on center back opening edges.

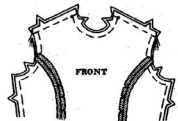
Pin closed zipper under opening edges, with tab end 1/2" below neckline seam line, having opening edges meet at center of zipper. Baste.

Stitch, using a zipper foot.

If you prefer, zipper may be hand-sewn.

## shoulder seams

Stitch front to back at shoulder seams, matching small dots ●.

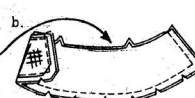


## UNIT 4 collar

a—Machine-baste interfacing to WRONG side of collar 1/2" from raw edges. Trim interfacing close to stitching.



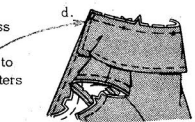
b—With RIGHT sides together, stitch facing to collar, leaving notched edges open.



c—Turn collar; press. Baste raw edges together. Top-stitch 1/2" from finished edges.



d—Clip neck edge of dress to stay-stitching. On OUTSIDE, pin collar to neck edge, matching centers and small dots ●. Baste.

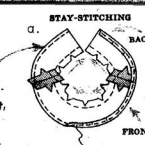


## UNIT 5 front and back facings

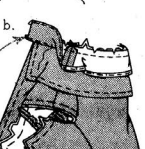
a—Stitch shoulder seams of facings.

Stitch 1/4" from unnotched edge. Press under edge along stitching, clipping curves and stitch.

Clip neck edge to stay-stitching.

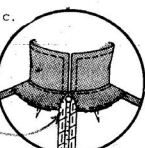


b—With RIGHT sides together, pin facing to neck edge, matching centers and seams. (Facing extends 5/8" beyond back opening edges.) Stitch. Trim seam; clip curves.



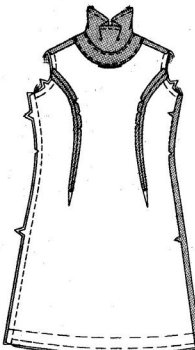
Press facing out; press seam toward facing. Facing side up, understitch close to seam line thru facing and seam.

c—Press facing to INSIDE, pressing under and slip-stitching center back edges. Tack facing to shoulder seams.



## side seams

Stitch front to back at side seams. Clip curves.



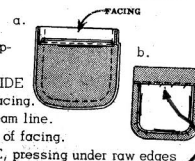
## UNIT 6 pockets

a—Stitch under 1/4" on upper edge.

Turn upper edge to OUTSIDE along fold line, forming facing. Stitch raw edges along seam line.

Trim raw edges the depth of facing.

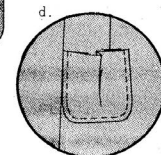
b—Press facing to INSIDE, pressing under raw edges along stitching. Slip-stitch facing.



c—Top-stitch 1/2" from side and lower edges.



d—On OUTSIDE, pin pockets to front along pocket lines. Slip-stitch sides and lower edges of pocket.

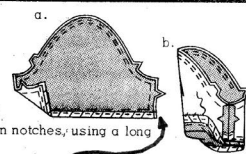


## UNIT 7 sleeves

a—To ease top of sleeve, stitch along seam line and 1/4" INSIDE seam line between notches, using a long machine-stitch.

Stitch one edge of seam binding 1/4" over lower edge (or stitch under 1/4" on raw edge).

b—Stitch underarm seam. Press up hem; slip-stitch.

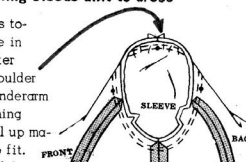


## stitching sleeve-unit to dress

With RIGHT sides together, pin sleeve in armhole with center small dot ● at shoulder seam, matching underarm seams and remaining small dots ●. Pull up machine-stitching to fit. Baste, easing in fullness.

Stitch. Stitch 1/8" from first stitching.

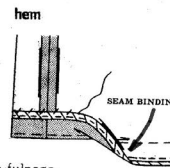
Trim seam close to stitching. Press seam toward sleeve, shrinking out fullness.



Mark length. Press up hem along marking. Mark depth of hem; trim evenly.

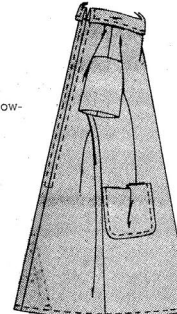
Stitch one edge of seam binding 1/4" over raw edge (or stitch under 1/4" on raw edge).

Slip-stitch hem, easing in fullness.



## top-stitching

Top-stitch 1/2" above lower edge of dress.



## finishing

Make three thread loops at LEFT back, making one at neck seam and two on collar at small dots ●. Sew hooks opposite loops. A purchased belt may be worn at waistline.



## cape

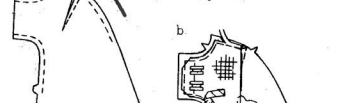
### UNIT 1 front

a—Stay-stitching.



a—Make dart.

Trim dart; press toward center.



b—Pin interfacing to WRONG side of front 2" above lower edge, having outer edges even.

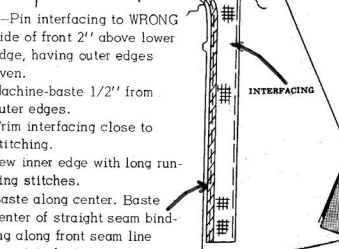
Machine-baste 1/2" from outer edges.

Trim interfacing close to stitching.

Sew inner edge with long running stitches.

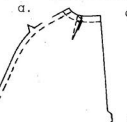
Baste along center. Baste center of straight seam binding along front seam line over interfacing.

Make bound buttonholes in RIGHT front. (Worked or machine buttonholes may be made when cape is finished.)

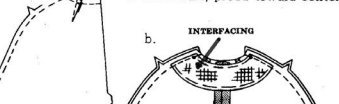


### UNIT 2 back and seams

a—Stay-stitching.

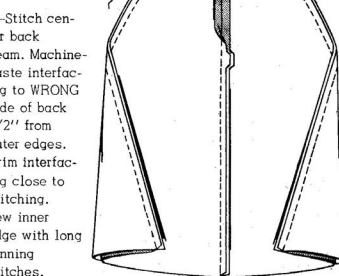


a—Make dart; press toward center.



b—Stitch center back seam. Machine-baste interfacing to WRONG side of back 1/2" from outer edges. Trim interfacing close to stitching. Sew inner edge with long running stitches.

Stitch front to back at shoulder seams from neck edge to lower edge, easing back to fit between small dots ● at neck edge and notch.

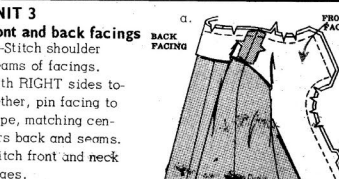


### UNIT 3 front and back facings

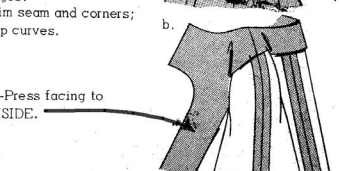
a—Stitch shoulder seams of facings.

With RIGHT sides together, pin facing to cape, matching centers back and seams, easing back neck edge to fit. Tack seams together loosely.

Trim seam and corners; clip curves.



b—Press facing to INSIDE.



## hem

Mark length. Open out front facings.

Press up hem along marking.

Mark depth of hem; trim evenly.

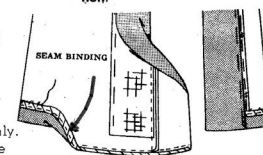
Stitch one edge of seam binding 1/4" over raw edge.

Slip-stitch hem, easing in fullness.

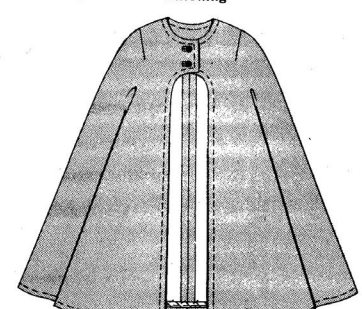
Press facings to INSIDE; slip-stitch to hem.

Sew facing to hem with small stitches.

Sew remaining facing with long running stitches.



## finishing



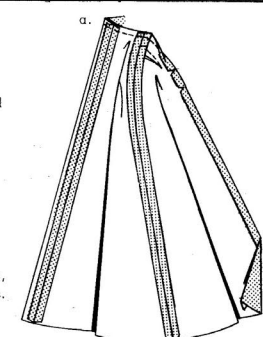
Top-stitch 1/2" from front, neck and lower edges. Finish underside of bound buttonholes. Lap RIGHT front over LEFT, matching centers. Sew buttons under buttonholes.

### UNIT 4 lining

a—Make darts (except back neck darts) and stitch seams same as cape.

Press darts away from centers.

Press under 5/8" on front and neck edges, clipping curves.

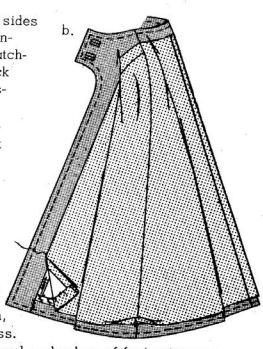


b—With WRONG sides together, pin lining to cape, matching centers back and seams, easing back neck edge to fit. Tack seams together loosely.

Turn up lining hem 1" above lower edge of cape.

Turn under 1/4" on raw edge of lining hem; slip-stitch, easing in fullness.

Hand-sew front and neck edges of facing to cape. French-tack lining to hem at seams.

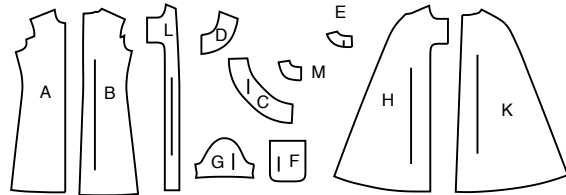


# Simplicity®

Thank you for purchasing this Simplicity pattern.  
We made every effort to provide you with a high quality product.

## SUPPLEMENTAL CUTTING LAYOUTS

11 PIECES



A Dress Front  
B Dress Back  
C Dress Collar  
D Dress Front Facing  
E Dress Back Facing  
F Pocket  
G Sleeve  
H Cape Front  
K Cape Back  
L Front Facing  
M Back Facing



www.simplicity.com



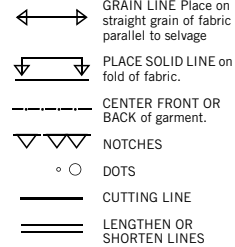
info@simplicity.com



1-888-588-2700

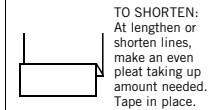
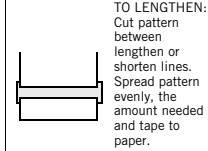
### The Pattern

#### SYMBOLS



SEAM ALLOWANCE: 5/8" (1.5cm) unless otherwise stated is included but not printed on MULTI-SIZE PATTERNS. Mark your size with colored felt tip pen. See chart on tissue for how to use MULTI-SIZE PATTERNS.

**ADJUST IF NEEDED**  
Make adjustments before placing pattern on fabric.



When lengthen or shorten lines are not given, make adjustments at lower edge of pattern.

### Sewing

- SEW garment following **Sewing Directions**.
- PIN or machine-baste seams matching notches.
- STITCH 5/8" (1.5 cm) seams unless otherwise stated.
- PRESS seams open unless otherwise indicated clipping when necessary so seams will lie flat.
- TRIM seams to reduce bulk, as shown below.



## General Directions

### Cutting/Marking

#### BEFORE CUTTING:

PRESS pattern pieces with a warm dry iron. PRE-SHRINK fabric by pre-washing washables or steam-pressing non-washables.

CIRCLE your cutting layout.

PIN pattern to fabric as shown in Cutting Layouts.

• FOR DOUBLE THICKNESS: Fold fabric with RIGHT sides together.

• FOR SINGLE THICKNESS: Place fabric RIGHT side up.

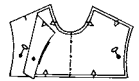
• FOR PILE, SHADED OR ONE WAY DESIGN FABRICS: Use "with nap" layouts

#### AFTER CUTTING:

Transfer markings to WRONG side of fabric before removing pattern. Use pin and chalk method or dressmaker's tracing paper and wheel.

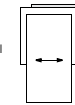
#### To Quick Mark:

- Snip edge of fabric to mark notches, ends of fold lines and center lines.
- Pin mark dots.

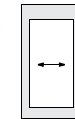


### SPECIAL CUTTING NOTES

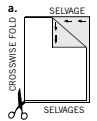
★ If layout shows a piece extending past fold, cut out all pieces except piece that extends.



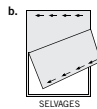
Open out fabric to single thickness. Cut extending piece on RIGHT side of fabric in position shown.



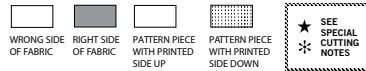
\* Mark small arrows along both selvages indicating direction of nap or design. Fold fabric crosswise with RIGHT sides together, and cut along fold (a).



Turn one fabric layer around so arrows on both layers go in the same direction. Place RIGHT sides together (b).



## Cutting Layouts

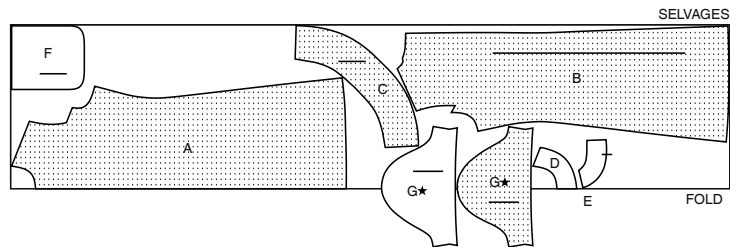


POSITION OF PATTERN PIECES MAY VARY SLIGHTLY ACCORDING TO YOUR PATTERN SIZE

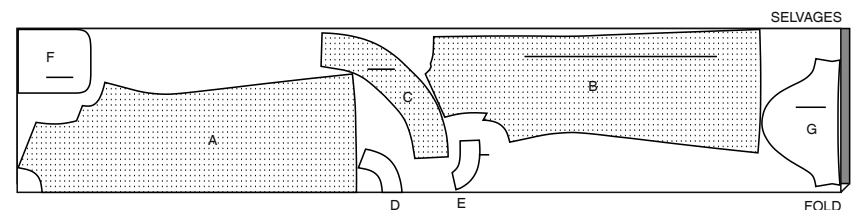
### DRESS

USE PIECES A B C D E F G

45" (115CM)  
WITH NAP  
SIZES 6 8 10 12 14 16 18



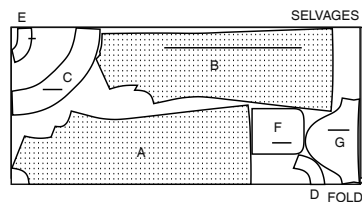
45" (115CM)  
WITH NAP  
SIZES 20 22



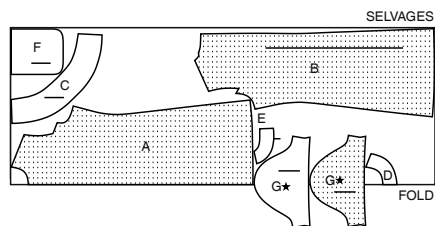
CUTTING LAYOUTS CONTINUED ON PAGE 2



60" (150CM)  
WITH NAP  
SIZES 6 8 10 12 14 16 18



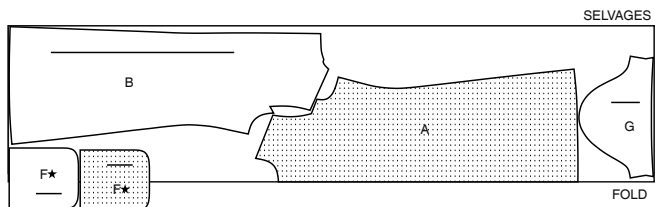
60" (150CM)  
WITH NAP  
SIZES 20 22



## LINING

USE PIECES A B F G

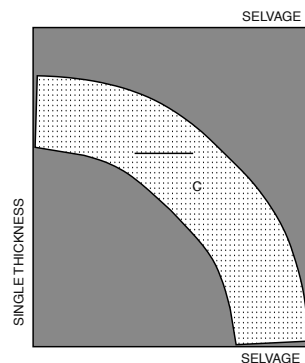
45" (115CM)  
WITHOUT NAP  
ALL SIZES



## INTERFACING

USE PIECES C

20" (51CM)  
WITHOUT NAP  
ALL SIZES

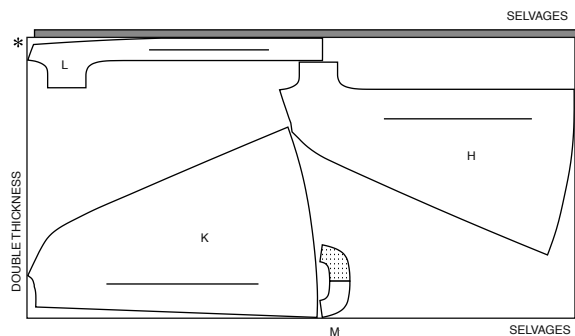


## CAPE

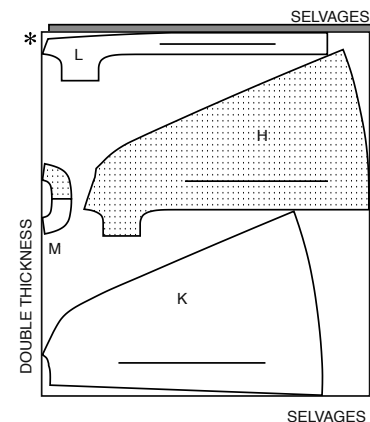
USE PIECES H K L M

PIECE M IS CUT ONE.

45" (115CM)  
WITH NAP  
ALL SIZES



60" (150CM)  
WITH NAP  
ALL SIZES

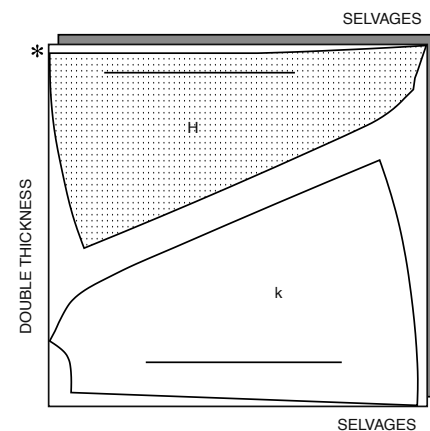


## CAPE LINING

**NOTE:** AFTER CAPE HAS BEEN CUT, TRIM PATTERNS H AND K ALONG CUTTING LINES FOR LINING. TRIM AWAY 1" FROM LOWER EDGES OF PATTERNS H AND K. CUT LINING BY ALTERED PATTERNS.

USE PIECES H K

45" (115CM)  
WITHOUT NAP  
ALL SIZES

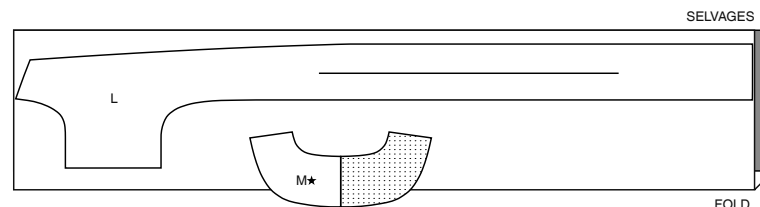


## CAPE INTERFACING

**NOTE:** FRONT INTERFACING - CUT 2 BY L, PLUS 1/2" ON LONG UNNOTCHED EDGE AND LESS 2" ON LOWER EDGE. BACK INTERFACING CUT 1 ON FOLD BY M PLUS 1/2" ON LONG UNNOTCHED EDGE.

PIECES L M

20" (51CM)  
WITHOUT NAP  
ALL SIZES





# Congrats!

You've completed your sewing adventure

---

## SHARE YOUR LOOK



Post your pattern and tag us using [#simplicitypatterns](#)  
[@simplicity\\_creative\\_group](#)  
[@simplicitymccallsuk](#)  
[@simplicitymccallsaustralia](#)  
for a chance to be featured on our social media.

Look for more PDF patterns at [simplicity.com](http://simplicity.com) or for customers outside the U.S. and Canada visit [sewdirect.com](http://sewdirect.com) and [sewdirect.com.au](http://sewdirect.com.au)

Have a question or need help with your sewing project contact us:  
[Simplicity.com](http://Simplicity.com)    [Sewdirect.com](http://Sewdirect.com)    [Sewdirect.com.au](http://Sewdirect.com.au)



Simplicity ©2024 a division of IG Design Group Americas Inc. • Atlanta, GA 30342 USA [www.thedesigngroup.com](http://www.thedesigngroup.com) • All Rights Reserved. [www.simplicity.com](http://www.simplicity.com) • Made in the U.S.A. Fabriqué aux États-Unis.

To be used for individual private home use only and not for commercial or manufacturing purposes. • A usage privé seulement et non à des fins commerciales ou de production en série. • Para uso privado solamente, no se puede utilizar con propósitos de comercialización o de producción en serie.