

S3083

Simplicity®

1950s Vintage



Designed and printed in USA.

Average

MISSES' DRESS AND JACKET

Suggested Fabrics: Version A: Even or uneven wool plaids, Rayon. Version A Contrast: Cotton, Jersey, Rayon. Version B: Cotton, Rayon. **Lining:** Lining Fabric, Rayon. **Interfacing:** Hair Canvas.

Notions: Version A,B Dress: One 12" (30cm) zipper, 1½ yds. (1.2m) of 1" (2.5cm) ribbon (for belting), seam binding. Version A,B Jacket: Seam binding, belt buckle (opt.), triangular shoulder pads. **Also for Version A Jacket:** Four buttons.

Sizes	8	10	12	14	16	18	20	22	24	26
European	34	36	38	40	42	44	46	48	50	52

BODY MEASUREMENTS: Select pattern size based on body measurements

Bust	31½	32½	34	36	38	40	42	44	46	48	50
Waist	24	25	26½	28	30	32	34	37	39	41½	"
Hip-9" below waist	33½	34½	36	38	40	42	44	46	48	50	"
Back-neck to waist	15¾	16	16¼	16½	16¾	17	17¼	17½	17¾	17¾	"

Version A Jacket and Skirt

45**	4½	4%	4%	4%	4%	4%	4%	4%	5%	5%	Yds.
60**	3¼	3%	3%	3½	3½	3½	3½	3½	3½	3¾	"

Version A Contrast Bodice

45**	1%	1%	1¼	1¼	1¼	1%	1%	1%	1%	1%	Yds.
60**	¾	¾	¾	¾	1	1%	1%	1%	1%	1½	"

Jacket Lining (opt.)

45***	1¼	1¼	1¼	1¼	1¼	1¼	1½	1½	1½	1½	Yds.
-------	----	----	----	----	----	----	----	----	----	----	------

Jacket Interfacing

20" - 1½ yds.

Version B Dress

45**	3¼	3¼	3¼	3¼	3¼	3%	3%	3%	3%	3%	Yds.
60**	3	3	3	3	3	3%	3%	3¼	3%	3½	"

Version B Jacket

45**	1½	1½	1½	1½	1½	1%	1%	1%	1¼	1¼	Yds.
60**	1¼	1¼	1¼	1¼	1¼	1%	1½	1½	1½	1½	"

Lining (opt.)

45***	¾	¾	¾	1	1	1	1%	1¼	1¼	1¼	"
-------	---	---	---	---	---	---	----	----	----	----	---

Jacket Interfacing 20" - 1¼ yds.

NOTE: Please refer to the sewing instructions for FINISHED GARMENT MEASUREMENTS.

*with nap **without nap

Moins Facile

ROBE ET VESTE POUR JEUNES FEMMES

Tissus Conseillés: Version A: Plaids en laine uniformes ou inégales, Rayonne. Version A Contrast: Coton, Jersey, Rayonne. **Doublure:** Tissu à doublure, Rayonne. **Entoilage:** Toile tailleur.

Merci: Version A,B Robe: 1 fermeture à glissière de 30cm, 1.2m de ruban de 2.5cm (pour ceinture), extra-fort. Version A,B Veste: Extra-fort, boucle de ceinture (facultatif), épaulettes triangulaires. **Aussi pour Version A Veste:** 4 boutons.

Tailles	8	10	12	14	16	18	20	22	24	26
Françaises	36	38	40	42	44	46	48	50	52	54
Européen	34	36	38	40	42	44	46	48	50	52

MESURES DU CORPS: Choisissez la taille du patron basée sur les mesures du corps

Poitrine	80	83	87	92	97	102	107	112	117	122	cm
Taille	61	64	67	71	76	81	87	94	99	106	"
Hanches (23cm au-dessous de la taille)	85	88	92	97	102	107	112	117	122	127	cm
Dos du cou à la taille	40	40.5	41.5	42	42.5	43	44	44	44.5	44.5	"

Version A Veste et Jupe

115cm*	4.1	4.2	4.2	4.2	4.3	4.5	4.5	4.5	4.7	4.7	m
150cm*	3.0	3.1	3.1	3.2	3.2	3.2	3.2	3.2	3.3	3.4	"

Version A Corsage contrasté

115cm*	1.0	1.0	1.1	1.1	1.1	1.1	1.3	1.3	1.3	1.3	m
150cm*	0.7	0.7	0.7	0.8	0.9	1.0	1.3	1.3	1.3	1.3	"

Doublure pour veste (facultatif)

115cm**	1.0	1.1	1.1	1.1	1.1	1.1	1.3	1.4	1.4	1.4	m
---------	-----	-----	-----	-----	-----	-----	-----	-----	-----	-----	---

Entoilage pour veste

51cm- 1.4m

Version B Robe

115cm*	3.4	3.4	3.4	3.4	3.4	3.4	3.5	3.5	3.5	3.5	m
150cm*	2.7	2.7	2.7	2.7	2.7	2.7	2.9	3.0	3.1	3.2	"

Version B Veste

115cm*	1.3	1.4	1.4	1.4	1.4	1.5	1.5	1.5	1.6	1.6	m
150cm*	1.0	1.1	1.1	1.1	1.1	1.3	1.4	1.4	1.4	1.4	"

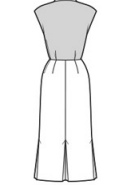
Doublure (fac.) 115cm**

0.8	0.8	0.8	0.8	0.9	0.9	1.0	1.0	1.1	1.1	"
-----	-----	-----	-----	-----	-----	-----	-----	-----	-----	---

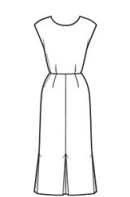
Entoilage pour veste 51cm- 1.0m

NOTE: S'il vous plaît, reportez-vous au instructions de couture pour les MESURES DU VÊTEMENTS FINI.

*avec sens **sans sens

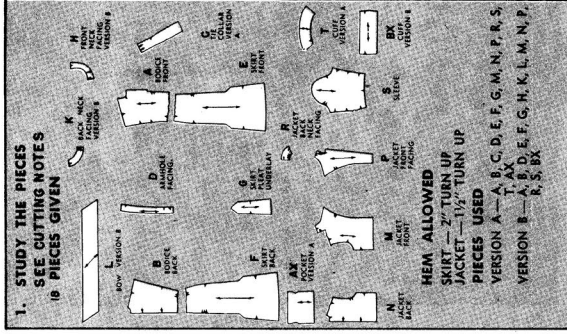


A

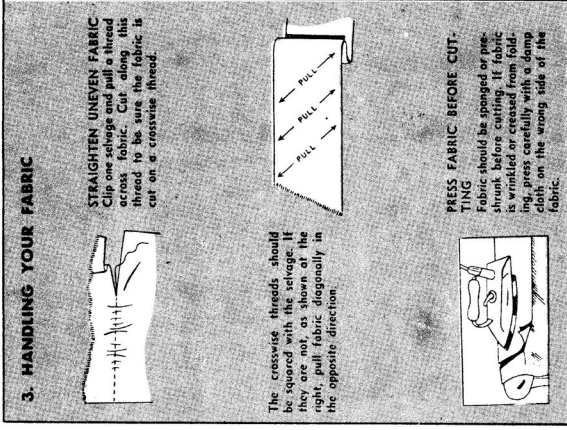
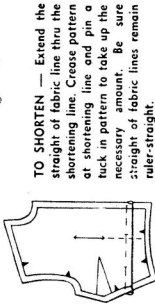
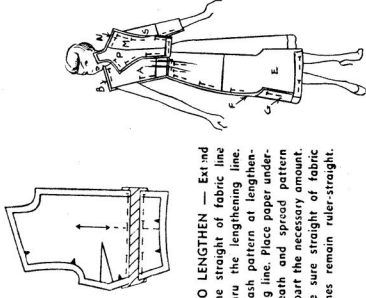


B

8360

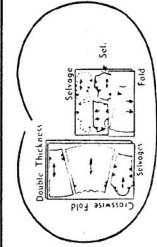


2. PATTERN ADJUSTMENT



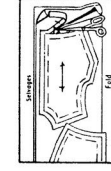
4. PREPARATION FOR CUTTING

LAY OUT THE PATTERN PIECES. With a pencil circle the diagram you need for your size, the width of fabric used and the style used. When single fabric is used, place pattern on right side of fabric with pattern right side up. For fabric shown in double thicknesses, have right side of fabric facing each other. Broken lines indicate duplicate pieces or the shape of the whole piece when only half a pattern is given. Broken lines also indicate pieces (such as a belt) which are cut by a given measurement.



FOR STRAIGHT GRAIN

Place each pattern piece on the fabric, so that the ends of the arrow are the same distance from the selvage. Measure carefully before pinning the pattern.



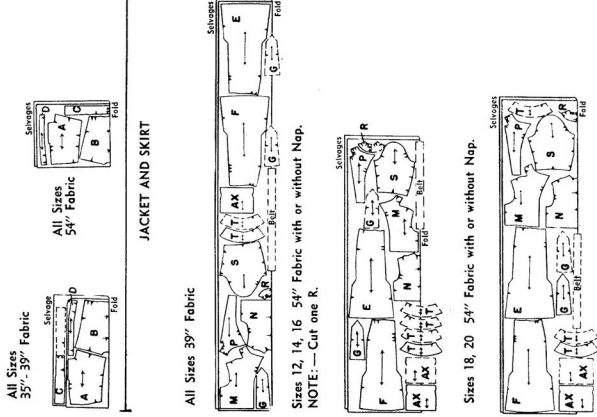
TO CUT — Cut pattern and fabric accurately on the cutting line with long firm strokes with the scissors. Cut notches out into the margin.

CUTTING NOTES

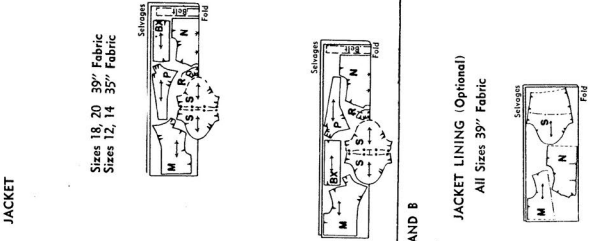
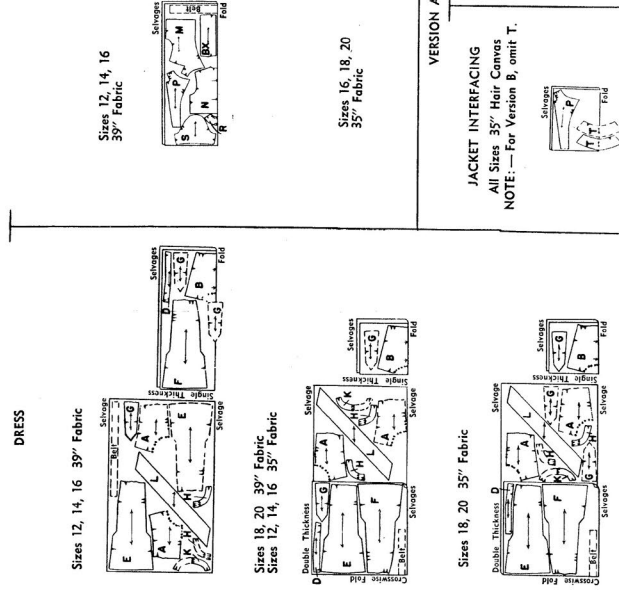
When pattern piece extends beyond fold of fabric, open fabric before cutting; place pattern on right side of fabric in the position shown.

VERSION A AND B DRESS FABRIC BELT (Optional) — Cut fabric 3 1/4" wide and 7" longer than waist measurement.
JACKET INTERFACING — Cut 2 by P, less 1 1/2" at lower edge.
LINING (Optional) — After Jacket has been cut, trim M thru cut-

VERSION A BODICE

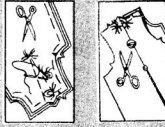


VERSION B



6. MARKING

The pattern line of your Simplicity pattern is perfect, as are all trimming lines, cutting lines and other important construction points. It is essential that all of these construction points be marked on fabric with tailor's tacks or tailor's chalk. Do not remove pattern until ready to sew.



TAILOR'S TACKS — Make tailor's tacks thru marking lines and *s. Cut top loops before removing pattern. Separate two thicknesses of fabric and clip threads between layers. Run bastings (using long stitches on right side of fabric) at center front and back. Do not remove bastings until garment is finished.



TAILOR'S CHALK — Place pins thru marking lines and *s. Mark undersewing of fabric along pin lines. For upper section, fold pattern back along pin lines and mark fabric, removing pins as you go along. Run bastings (using long stitches on right side of fabric) at centers front and back. Do not remove bastings until garment is finished.

8360

INITIAL FITTING

Baste dress and jacket together, following sewing procedure outlined. Do not trim seam allowances (for jacket) in place along shoulder seam, facing collar, etc. Pin pads in place along shoulder seam, facing collar, etc. of pad and end of shoulder. Adjust pad to fit. Have belt in place. Make sure that the shoulder seam is directly on top of the shoulder, sloping neither to the front nor to the back. The underarm seam should be straight and perpendicular to the bodice. The bodice should be straight to the floor. Center front and center back lines should hang perpendicular to the floor. If there are any adjustments, fit garment again. After fitting, go thru sewing procedure again, this time stitching by machine unless otherwise instructed.

AFTER STITCHING EACH SEAM—Press seam open, unless otherwise instructed.

For enclosed seams, facings, collar, etc., trim seam, clipping curves and corners.

SHORT BIAS CURVED EDGES—To prevent stretching, make a stay line by machine stitching $\frac{1}{2}$ " from these edges.



DRESS—VERSION A

BODICE

1. SOFT PLEATS, SEAMS AND HEM FACING

a—Make soft pleats in front and back. Join center front seam below second small • from upper edge. Join shoulder seam. Stitch $\frac{1}{2}$ " from center front seam below small •. Clip to stitching. Join side seams below small •, leaving LEFT side open below notch.

b—Stitch under $\frac{1}{4}$ " on long raw edge of front extension or finish with seam binding. Fold front extension to OUTSIDE along fold line to form hem-facing; baste facing to neck edge. Stitch between medium and small • on neck edge. Clip between medium and small • on neck edge. Turn under seam and press down. Turn hem-facing to INSIDE; baste.

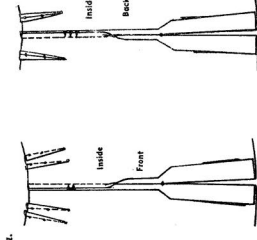
2. TIE COLLAR

Fold tie collar in half lengthwise, RIGHT side together. Stitch ends below medium •. Trim seam. Turn RIGHT side out; baste.

Baste RIGHT side of tie collar to WRONG side of bodice at neck edge, stretching center front and back. Turn under seam and press down. Press up on remaining raw edge and top-stitch over seam.

3. ARMHOLE FACING

Join underarm seam below small •. Stitch under $\frac{1}{4}$ " on unmatched edge or finish with seam binding. With RIGHT sides together, join facing to armhole edge matching small • on facing to center small • or shoulder seam and underarm seam. Turn facing to INSIDE; baste. Slip-stitch in place.



SKIRT

4. DARTS, SEAMS AND PLEAT UNDERLAY

a—Make darts in front and back. Trim back dart and press open. Press front darts toward center front. Join center front and center back seam above inner small • at center of RIGHT join. Press seams open. On INSIDE with WRONG side of bodice facing, join front extensions at lower edge, matching small •, having raw notched edges even and breaking stitching at small • at point, as shown.

b—To form pleat; on OUTSIDE, fold under lines of medium •. Bring folds to center of underlay; baste.

c—Join front to back at sides above inner small • of extension, leaving LEFT side open above notch. Join pleat underlay to extensions. Make pleat; baste.

On INSIDE, baste along seam at point of extension, matching thickness. Catch-stitch raw edge of points in place.

If desired, top-stitch along bastings at point.

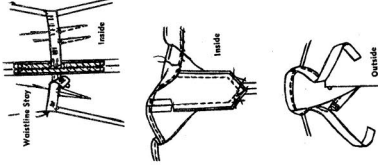
5. WAISTLINE SEAM AND SIDE OPENING

Pin skirt to bodice matching centers and sides, easing skirt back to fit; baste. Fit dress, adjusting length of bodice. To prevent stretching, baste one edge of seam binding along seam line on bodice side. Stitch seam and press down.

ZIPPER—Follow instructions given with zipper.

6. WAISTLINE STAY

Pin stay to bodice, measuring the waistline measurement. Cut stay following procedure outlined. Press stay along waistline seam on INSIDE. Tack to darts and seams. Fasten ends with hook and eye.



7. FINAL FITTING AND HEM

Fabric has been allowed for belt. Make belt or have one made. Suggested width is $1\frac{1}{2}$ ".

Have belt in place. Mark the length of dress using a hem marker 20 yardsstick. Turn up lower edge along in riling, baste. Clip between edges of pleat seam, to the stitching at top of hem. Press seam open in hem. Stitch under raw edge or finish with seam binding. Slip-stitch in place, easing in fullness. Press dress thoroughly. Sew hook and eye at neck edge.

DRESS—VERSION B

Make same as in Step 1, paragraph a, joining entire center front seam.

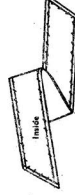
8. NECK FACINGS

Join center front seam of front neck facing. Join front to back at shoulder. Stitch under raw edges or finish with seam binding. With RIGHT sides together, join facings to neck edge matching centers and seams. Slip-stitch in place. Prepare and apply armhole facings same as in Step 3.

Make remaining dress same as in Version A, following Steps 4 thru 7, omitting hook and eye at neck edge.

9. BOW

Roll hem all edges. Form bow and sew to center front seam at neck edge.



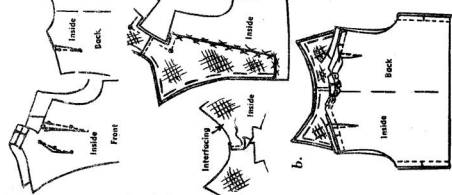
JACKET—VERSION A

NOTE—When jacket is unlined, omit catch-stitching on inner edges of interfacings, facings and hem in seam binding. Sew interfacing to facing by hand. Slip-stitch facings and hem in place.

10. FORCED INTERFACING, REINFORCED CORNER AND SEAM

a—Make darts. Press toward centers. Join center back seam. Press front extension. Lap seam edges on extension of interfacing at front seam edges. Baste interfacing to WRONG side of front, matching center back, placing lower end $1\frac{1}{2}$ " from lower edge and having outer raw edges even. Catch-stitch inner and lower edges in place.

To reinforce corner at front shoulder, stitch strong seam line in each side of small •, stitching this small •, as shown.

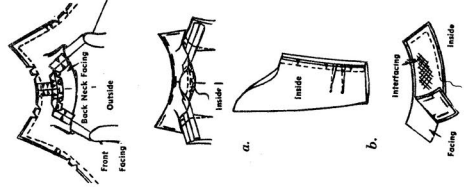


b—Stitch $\frac{1}{2}$ " from neck edge of jacket back. Clip to stitching small •. Clip to small • at reinforced corner. Baste back neck edges together matching centers back. Stitch entire shoulder and neck edge as basted. Press seams open. Join side seams.

11. FACINGS

Reinforce corner on front facing same as for jacket. Pin center back seam of extension to bodice. Slip-stitch $\frac{1}{2}$ " from neck edge of back neck facing. Clip to stitching. Baste back neck facing to front facing at shoulder, matching small •. Clip to small • at reinforced corner. Baste neck edges together, inner and lower edges in place. Press seam open and neck edge as basted. Press seam open.

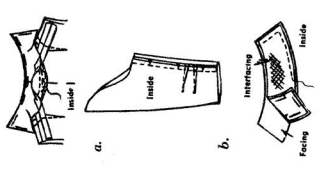
With RIGHT sides together, join facings to jacket along outer edges matching centers and seams. Turn facings to INSIDE; baste. Tack neck seams together loosely.



12. SLEEVE AND CUFF

a—Make darts. Press down. Join underarm seam.

b—Baste interfacing to WRONG side of cuff. Face cuff, leaving notched edge open.



c—Turn; baste. Baste cuff to lower edge of underarm seam. Turn bias to INSIDE; baste. Catch-stitch raw edge in place.

13. ARMHOLE

a—To ease in fullness at top of sleeve, gather between notches, using a long machine-stitch.

b—With RIGHT sides together, pin sleeve combination with small • at shoulder seam, matching notches. Sew seam matching. Pull up gathering thread to fit.

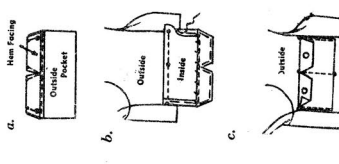
Holding sleeve in the position above, baste sleeve in armhole, smoothing out collars until there are no ripples below the seam line; ease in fullness below notches; stitch. Press seam toward sleeve, spreading out fullness.

14. POCKET

a—Stitch under $\frac{1}{4}$ " on upper raw edge or finish with seam binding. To form hem facing, turn upper edge to OUTSIDE along fold line and top-stitch $\frac{1}{2}$ " from small •; stitch end and trim small • at side of pocket, as shown. Slash between stitching.

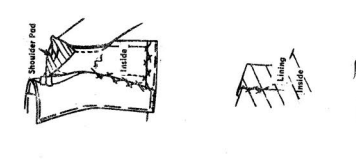
b—Turn hem facing to INSIDE; baste. Pull out front facings at lower edge of pocket. With RIGHT sides together, place pocket on lower edge of jacket front, matching small •, basting finished edge down, as shown. Stitch between medium and small •. Baste pocket seam allowance on side edges. Slip-stitch hem facing in place.

c—Turn pocket up, matching small end and medium •, as shown. Baste. Top-stitch in place below medium •. Stitch thru center of pocket between small •. Stitch thru upper corners of pocket. Turn upper edge down along fold line. Turn under seam and press down on flap thru pocket. Do not catch thru jacket.



15. HEM, SHOULDER PADS AND FINISHING FACINGS

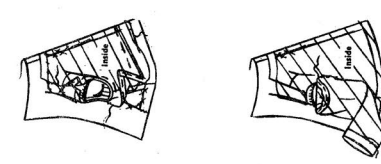
Turn up lower edge; baste. Turn front facing to INSIDE; baste. Sew pads in place, slipping thin end under facings. Catch-stitch facings to lining in place. Whip lower raw edge of front facing to bodice. Slip-stitch neck and lower edges of facing and hem together. Press jacket thoroughly.



16. JACKET LINING

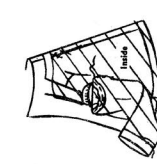
Make darts and join side seams same as for jacket, basting not stitching front shoulder darts. Catch-stitch shoulder dart in place to bodice. Press shoulder seam. Press under jacket; matching seams. Tack seams together loosely to within 3" of lower edge. Trim away $\frac{1}{4}$ " from back neck edge. Baste under $\frac{3}{8}$ " on back shoulder and neck edges, clipping curves.

Baste under $\frac{3}{8}$ " on front and lower edges. Baste under $\frac{3}{8}$ " lining over shoulder and facing to bodice. Turn front shoulder darts. Baste edge of lining to shoulder pad. Baste lining to armhole, lapping back shoulder over front. Baste back shoulder and neck edges in place, pleating out fullness at center of neck edge. Place neck-stitch piece on raw edge of hem; baste. Slip-stitch in place. Hand sew front, shoulder and neck edges in place.



17. SLEEVE LINING

Make darts and join seam same as for sleeve. Baste under $\frac{3}{8}$ " on armhole and lower edges, matching notches. Pin lining to bodice. Baste neck seam together loosely. Pin lining to armhole, placing center small • at shoulder seam. Pull up gathers to fit. Baste, easing in fullness below notches. Place lower edge of lining on raw edge of sleeve. Slip-stitch lower edge in place. Hand sew armhole edge in place.

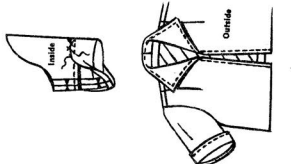


JACKET—VERSION B

Make same as Version A, omitting pocket and substituting the following sleeve end cuff instructions:

18. SLEEVE AND CUFF

Join underarm seam. Join ends of cuff. With RIGHT sides together, pin sleeve combination to fit. Stitch seam; press down. Fold cuff to half lengthwise, WRONG side together, having seam line of remaining raw edge along lengthwise seam. Slip-stitch $\frac{1}{2}$ " from inner raw edge in place. Top-stitch $\frac{3}{8}$ " from lower fold edge, as shown. Roll cuff to OUTSIDE over seam. If desired, top-stitch $\frac{3}{8}$ " from finished front and neck edges, as shown.



Copyright 1959 by Simplicity Pattern Co., Inc.



Thank you for purchasing this Simplicity pattern.
We made every effort to provide you with a high quality product.

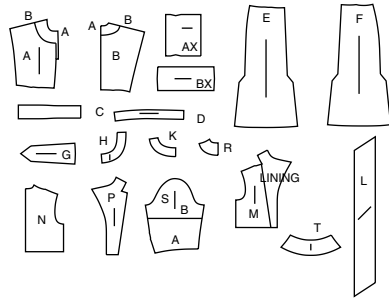
Sizes	8	10	12	14	16	18	20	22	24	26
European	34	36	38	40	42	44	46	48	50	52

FINISHED GARMENT MEASUREMENTS (Includes Design and Wearing Ease)

Version A,B Dress Bust	37 1/4	38 1/4	39 1/4	41 1/4	43 1/4	45 1/4	47 1/4	49 1/4	51 1/4	53 1/4	Ins.
Version A,B Dress Waist	25 1/4	26 1/4	27 1/4	29 1/4	31 1/4	33 1/4	35 1/4	37 1/4	39 1/4	41 1/4	Ins.
Version A,B Dress Hip	37 1/2	38 1/2	40	42	44	46	48	50	52	54	Ins.
Width, lower edge											
Version A,B Dress (excl. pleats)	44 1/4	45 1/4	47 1/4	49 1/4	51 1/4	53 1/4	55 1/4	57 1/4	59 1/4	61 1/4	Ins.
Finished back length from base of neck											
Version A,B Dress	48 1/4	48 1/2	48 3/4	49	49 1/4	49 1/2	49 3/4	50	50 1/4	50 1/2	Ins.

SUPPLEMENTAL CUTTING LAYOUTS

18 PIECES



- A BODICE FRONT
- AX POCKET-VERSION A
- B BODICE BACK
- BX CUFF-VERSION B
- C TIE COLLAR-VERSION A
- D ARMHOLE FACING
- E SKIRT FRONT
- F SKIRT BACK
- G SKIRT PLEAT UNDERLAY
- H FRONT NECK FACING-VERSION B
- K BACK NECK FACING-VERSION B
- L BOW-VERSION B
- M JACKET FRONT
- N JACKET BACK
- P JACKET FRONT FACING
- R JACKET BACK NECK FACING
- S SLEEVE
- T CUFF-VERSION A

General Directions

The Pattern

- SYMBOLS**
- GRAIN LINE Place on straight grain of fabric parallel to selvage
 - PLACE SOLID LINE on fold of fabric.
 - CENTER FRONT OR BACK OF garment.
 - NOTCHES
 - DOTS
 - CUTTING LINE
 - LENGTHEN OR SHORTEN LINES

ADJUST IF NEEDED

Make adjustments before placing pattern on fabric.

TO LENGTHEN: Cut pattern between lengthen or shorten lines. Spread pattern evenly, the amount needed and tape to paper.

TO SHORTEN: At lengthen or shorten lines, make an even pleat taking up amount needed. Tape in place.

SEAM ALLOWANCE: 5/8" (1.5cm) unless otherwise stated is included but not printed on MULTI-SIZE PATTERNS. Mark your size with colored felt tip pen. See chart on tissue for how to use MULTI-SIZE PATTERNS.

When lengthen or shorten lines are not given, make adjustments at lower edge of pattern.

Cutting/Marking

BEFORE CUTTING:

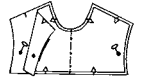
- PRESS pattern pieces with a warm dry iron. PRE-SHRINK fabric by pre-washing washables or steam-pressing non-washables.
- CIRCLE your cutting layout.
- PIN pattern to fabric as shown in Cutting Layouts.
- FOR DOUBLE THICKNESS: Fold fabric with RIGHT sides together.
 - FOR SINGLE THICKNESS: Place fabric RIGHT side up.
 - FOR PILE, SHADED OR ONE WAY DESIGN FABRICS: Use "with nap" layouts

AFTER CUTTING:

Transfer markings to WRONG side of fabric before removing pattern. Use pin and chalk method or dressmaker's tracing paper and wheel.

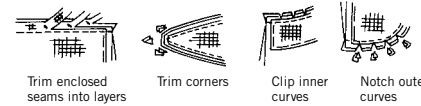
To Quick Mark:

- Snip edge of fabric to mark notches, ends of fold lines and center lines.
- Pin mark dots.



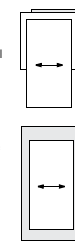
Sewing

- SEW garment following Sewing Directions.
- PIN or machine-baste seams matching notches.
- STITCH 5/8" (1.5 cm) seams unless otherwise stated.
- PRESS seams open unless otherwise indicated clipping when necessary so seams will lie flat.
- TRIM seams to reduce bulk, as shown below.



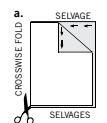
SPECIAL CUTTING NOTES

If layout shows a piece extending past fold, cut out all pieces except piece that extends.

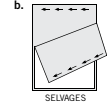


Open out fabric to single thickness. Cut extending piece on RIGHT side of fabric in position shown.

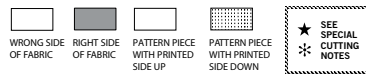
Mark small arrows along both selvages indicating direction of nap or design. Fold fabric crosswise with RIGHT sides together, and cut along fold (a).



Turn one fabric layer around so arrows on both layers go in the same direction. Place RIGHT sides together (b).



Cutting Layouts

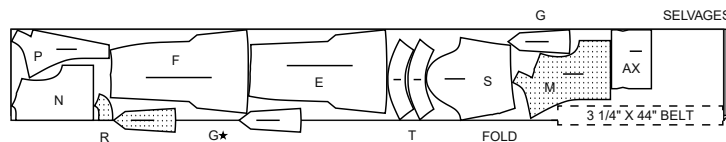


POSITION OF PATTERN PIECES MAY VARY SLIGHTLY ACCORDING TO YOUR PATTERN SIZE

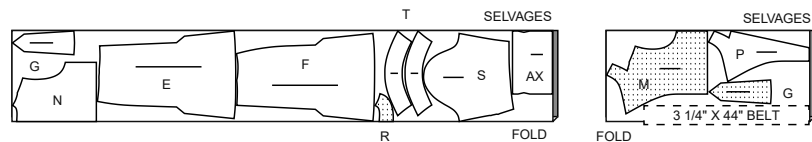
VERSION A JACKET AND SKIRT

USE PIECES AX E F G M N P R S T

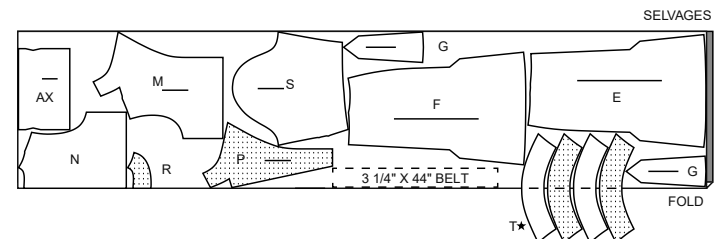
45" (115CM) WITH NAP
SIZES 8 10 12 14 16 18 20 22



45" (115CM) WITH NAP
SIZES 24 26



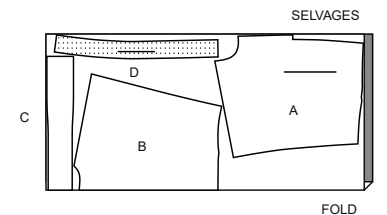
60" (150CM) WITH NAP
ALL SIZES



VERSION A CONTRAST BODICE

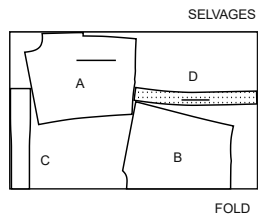
USE PIECES A B C D

45" (115CM) WITH NAP
ALL SIZES



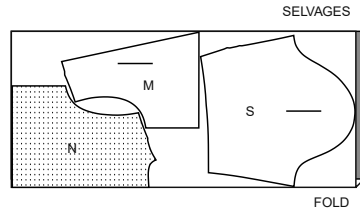
CUTTING LAYOUTS CONTINUED ON PAGE 2

60" (150CM)
WITH NAP
ALL SIZES



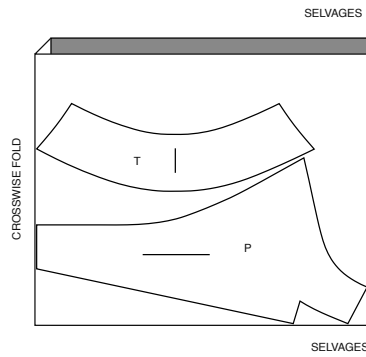
VERSION A JACKET LINING (OPT.)
USE PIECES M N S

45" (115CM)
WITHOUT NAP
ALL SIZES



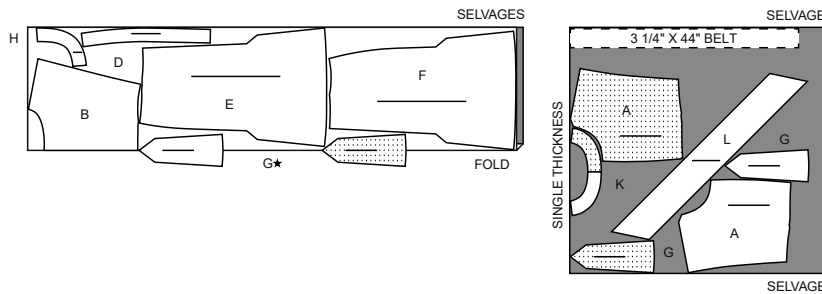
VERSION A JACKET INTERFACING
USE PIECES P T

20" (51CM)
ALL SIZES

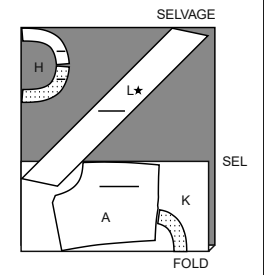
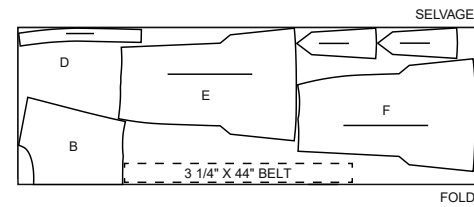


VERSION B DRESS
USE PIECES A B D E F G H K L

45" (115CM)
WITH NAP
ALL SIZES

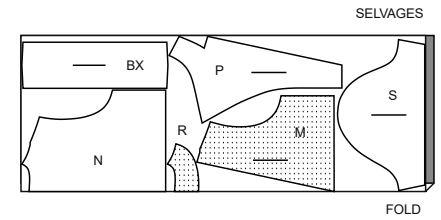


60" (150CM)
WITH NAP
ALL SIZES

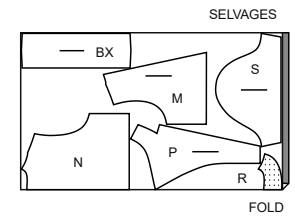


VERSION B JACKET
USE PIECES BX M N P R S

45" (115CM)
WITH NAP
ALL SIZES

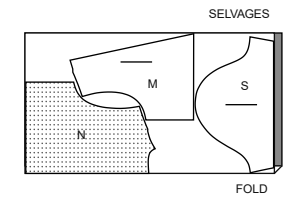


60" (150CM)
WITH NAP
ALL SIZES



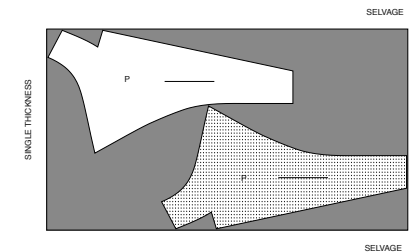
VERSION B LINING (OPT.)
USE PIECES M N S

45" (115CM)
WITHOUT NAP
ALL SIZES



VERSION B JACKET INTERFACING
USE PIECE P

20" (51CM)
ALL SIZES





Congrats!

You've completed your sewing adventure

SHARE YOUR LOOK



Post your pattern and tag us using [#simplicitypatterns](#)
[@simplicity_creative_group](#)
[@simplicitymccallsuk](#)
[@simplicitymccallsaustralia](#)
for a chance to be featured on our social media.

Look for more PDF patterns at [simplicity.com](#) or for customers outside the U.S. and Canada visit [sewdirect.com](#) and [sewdirect.com.au](#)

Have a question or need help with your sewing project contact us:
[Simplicity.com](#) [Sewdirect.com](#) [Sewdirect.com.au](#)



Simplicity ©2024 a division of IG Design Group Americas Inc. • Atlanta, GA 30342 USA [www.thedesigngroup.com](#) • All Rights Reserved. [www.simplicity.com](#) • Made in the U.S.A. Fabriqué aux États-Unis.

To be used for individual private home use only and not for commercial or manufacturing purposes. • A usage privé seulement et non à des fins commerciales ou de production en série. • Para uso privado solamente, no se puede utilizar con propósitos de comercialización o de producción en serie.