

S3082

Simplicity®

1950s Vintage



easy-to-sew

Designed and printed in USA.

Easy

Facile

MISSES' AFTERNOON AND EVENING DRESS AND BOLERO

**Suggested Fabrics:** **Version A:** Faille, Gingham, Pique, Rayon, Sharkskin, Taffeta. **Version B:** Cotton, Faille, Pique, Rayon, Taffeta. **Bolero:** Cotton, Rayon Lace.

**Notions:** **Dress Version A and B:** One 12" (30cm) zipper, hook and eye, 2¼ yds. (2.1m) of optional featherweight boning. **Dress Version B:** ¼ yds. (4.1m) of 4" (10cm) ribbon (for belt), optional seam binding.

Sizes	8	10	12	14	16	18	20	22	24	26
European	34	36	38	40	42	44	46	48	50	52

BODY MEASUREMENTS: Select pattern size based on body measurements

Bust	31½	32½	34	36	38	40	42	44	46	48	Ins.
Waist	24	25	26½	28	30	32	34	37	39	41½	"
Hip-9" below waist	33½	34½	36	38	40	42	44	46	48	50	"
Back-neck to waist	15¾	16	16¼	16½	16¾	17	17¼	17½	17¾	17¾	"

Version A Dress

45**	7%	7%	7%	7%	7%	7%	9	9%	9%	9%	Yds.
60**	5	5	5½	5½	5½	5½	6%	6%	6%	6%	"

Version B Dress, Collar and Cuffs

45**	5¼	5¼	5¼	5¼	5¼	5¼	5¼	5¼	5¼	5¼	Yds.
60**	3%	3¾	3¾	3¾	3¾	3¾	4	4%	4%	4¼	"

Version B Bolero

45**	¾	1	1	1	1	1	1¼	1¼	1½	1½	Yds.
60**	¾	¾	¾	¾	¾	¾	¾	1	1	1	"

FINISHED GARMENT MEASUREMENTS (Includes Design and Wearing Ease)

Version A,B Bust	33½	34½	36	38	40	42	44	46	48	50	Ins.
Version A,B Waist	25	26	27½	29½	31½	33½	35½	37½	39½	41½	"

Finished back length from base of neck

Version A Dress	57¼	57½	57¾	58	58¼	58½	58¾	59	59¼	59½	Ins.
Version B Dress	45	45¼	45½	45¾	46	46¼	46½	46¾	47	47¼	"

\*with nap \*\*without nap

ROBE D'APRÈS-MIDI ET DE SOIRÉE ET BOLÉRO POUR JEUNES FEMMES

**Tissus Conseillés:** **Version A:** Faille, Vichy, Piqué, Rayonne, Tissu grisaille, Taffetas. **Version B:** Coton, Faille, Piqué, Rayonne, Taffetas. **Boléro:** Coton, Dentelle de rayonne.

**Mercurie:** **Robe Version A et B:** 1 fermeture à glissière de 30cm, agrafe, 2.1m de baleine de poids très léger facultatif. **Robe Version B:** 4.1m de ruban de 10cm (pour ceinture), extra-fort (facultatif).

Tailles	8	10	12	14	16	18	20	22	24	26
Françaises	36	38	40	42	44	46	48	50	52	54
Européen	34	36	38	40	42	44	46	48	50	52

MESURES DU CORPS: Choisissez la taille du patron basée sur les mesures du corps

Poitrine	80	83	87	92	97	102	107	112	117	122	cm
Taille	61	64	67	71	76	81	87	94	99	106	"

Hanches (23cm au-dessous de la taille)

	85	88	92	97	102	107	112	117	122	127	cm
Dos du cou à la taille	40	40.5	41.5	42	42.5	43	44	44	44.5	44.5	"

Version A Robe

115cm*	6.7	6.7	6.7	7.0	7.1	7.2	8.2	8.3	8.6	8.7	m
150cm*	4.6	4.6	4.6	4.9	5.0	5.1	5.8	5.8	5.9	5.9	"

Version B Robe, Col et Poignets

115cm*	4.8	4.9	4.9	4.9	5.0	5.0	5.1	5.1	5.1	5.3	m
150cm*	3.3	3.3	3.4	3.4	3.5	3.5	3.5	3.7	3.8	3.8	"

Version B Boléro

115cm*	0.8	0.8	0.9	0.9	0.9	0.9	1.1	1.1	1.1	1.3	m
150cm*	0.7	0.7	0.8	0.8	0.8	0.8	0.8	0.8	0.9	0.9	"

MESURES DES VÊTEMENTS FINI (Motif et aisance de port compris)

Version A,B Poitrine	85	88	91	97	102	107	112	117	122	127	cm
Version A,B Taille	64	66	70	75	80	85	90	95	100	105	"

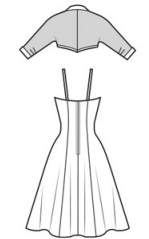
Longueur finie – dos, votre nuque à l'ourlet

Version A Robe	145	146	147	147	148	149	149	150	150	151	cm
Version B Robe	114	115	116	116	117	117	118	119	119	120	"

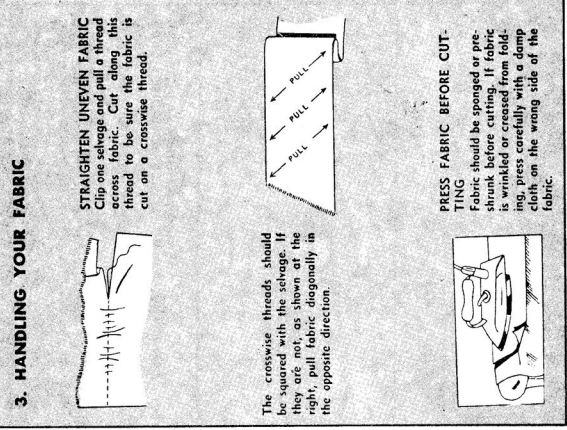
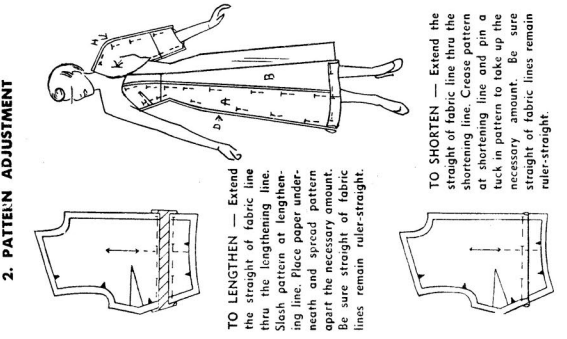
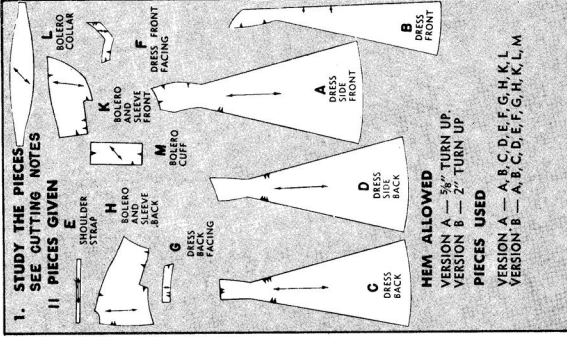
\*avec sens \*\*sans sens



A

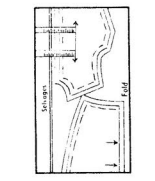
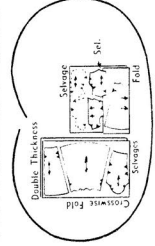


B



**4. PREPARATION FOR CUTTING**

LAY OUT THE PATTERN PIECES. With a pencil circle the diagram you need for your size, the width of fabric used and the style used. When single fabric is used, place pattern on right side of fabric with pattern right side up. For fabric shown in double thicknesses, have right side of fabric facing each other. Broken lines indicate duplicate pieces or the shape of the whole piece when only half a pattern is given. Broken lines also indicate pieces (such as a belt) which are cut by a given measurement.



**FOR STRAIGHT GRAIN** — Place each pattern piece on the fabric, so that the ends of the arrow are the same distance from the selvage. Measure carefully before pinning the pattern.

**TO CUT** — Cut pattern and fabric accurately on the cutting line with long firm slashes with the scissors. Cut notches out into the margin.

**CUTTING NOTES**

When pattern piece extends beyond fold of fabric, open fabric before cutting. Place pattern on right side of fabric in position shown.

**DRESS — VERSION A AND B**

**FEATHERBONDING (Optional)** — Cut 6 strips of bonding each the measurement from the upper edge of dress to the waistline, plus 7/8".

**VERSION A — EVENING DRESS AND BOLERO**

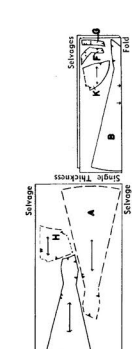
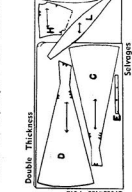
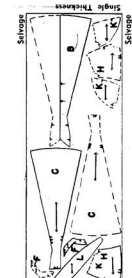
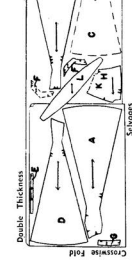
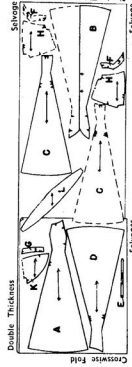
Sizes 11, 12, 13, 14, 15 44" Fabric

Sizes 16, 18 44" Fabric

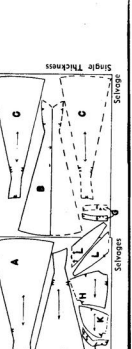
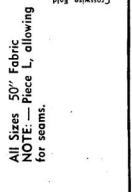
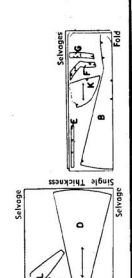
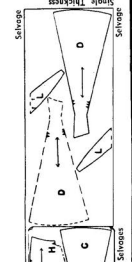
Sizes 11, 12, 13, 14, 15, 16 36" Fabric

Sizes 18, 39" Fabric

Sizes 11, 12, 13, 14 35" Fabric



Sizes 15, 16, 18 35" Fabric  
NOTE: — Piece L, allowing for seams.



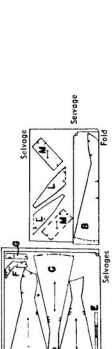
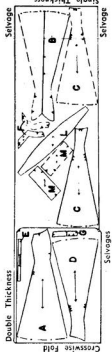
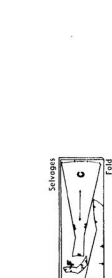
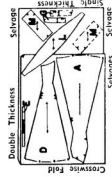
Sizes 11, 12, 13, 14 35" Fabric

VERSION B — DRESS, COLLAR AND CUFFS

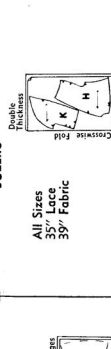
Sizes 15, 16, 18 35" Fabric

Sizes 11, 12, 13, 14 39" Fabric

NOTE: — Piece L, allowing for seams.

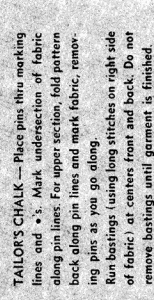
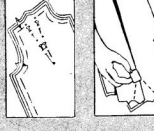
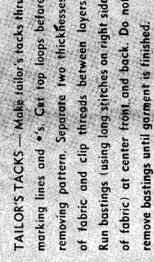
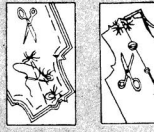


Sizes 15, 16, 18 39" Fabric  
NOTE: — Piece L, allowing for seams.



**6. MARKING**

The pattern line of your Simplicity pattern is perfect, as are all trimming lines, cutting lines and other important construction points. It is essential that all of these construction points be marked on fabric with tailor's tacks or tailor's chalk.



**TAILOR'S TACKS** — Make tailor's tacks thru marking lines and \*s. Cut top loops before removing pattern. Separate two thicknesses of fabric and clip threads between layers. Run bastings using long stitches on right side of fabric) at center front and back. Do not remove bastings until garment is finished.

**TAILOR'S CHALK** — Place pins thru marking lines and \*s. Mark underside of fabric along pin lines. For upper section, fold pattern back along pin lines and mark fabric, removing pins as you go along. Run bastings (using long stitches on right side of fabric) at centers front and back. Do not remove bastings until garment is finished.

8335

**INITIAL FITTING**

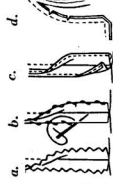
Baste dress and bolero together, following sewing procedures outlined below. Basting stitches are unimportant. Do not trim seam allowances. Do not press from the front. Make sure that the shoulder seam is directly on top of the shoulder, sloping neither to the front nor to the back. The underarm seam should fall in a straight perpendicular line from the center of the arm-pit to the floor. Center front and center back lines should hang perpendicular to the floor. Adjust dress and bolero separately if there are any adjustments to be made. After fitting, go thru sewing procedure again, this time stitching by machine, unless otherwise instructed.

**AFTER STITCHING EACH SEAM.**—Press seam open, unless otherwise instructed.

**SHORT BIAS CURVED EDGES.**—To prevent stretching, make a stay line by machine stitching  $\frac{1}{2}$ " from these edges.

**SEAM FINISHES**

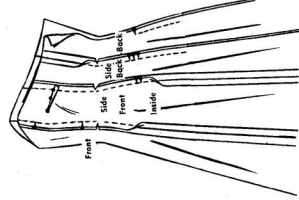
- a—Pink seams.
- b—Overcast separately.
- c—Turn in edges  $\frac{1}{8}$ " and stitch separately.
- d—For Enclosed Seam, trim seam, clipping corners and curves.



**DRESS—VERSION A**

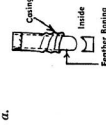
**1. DARTS AND SEAMS**

Make dart at side front underarm. Press dart down. Join front to side front, easing in side front to fit between notches. Join side front to side back. Join side seams. Clip seams along curves.

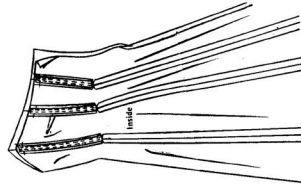


**2. FEATHERBONING**

a—Rip stitching of casing at ends of boning strips. Slip casing back and trim boning. Slip casing back in place. At one end of boning turn casing over boning, as shown. Slip-stitch in place.



b.

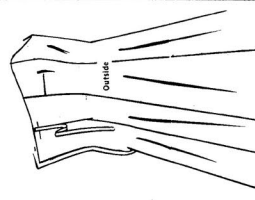


b—Place these boning strips along seams, having finished end at waistline and having upper raw edges even. Baste across upper edge. Stitch boning in place along long edges to seam allowance, as shown.



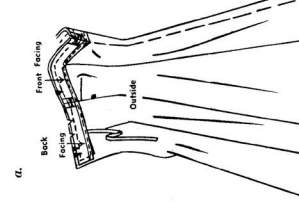
**3. SHOULDER STRAPS (Optional)**

Fold strap in half lengthwise, RIGHT sides together, stitch long edge and end edges. Press. Turn under raw edge and baste. On OUTSIDE baste raw end of strap to upper edge of back at side back seam, having raw edges even.

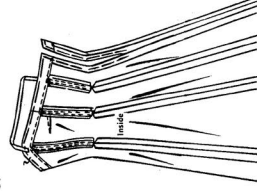


**4. FACINGS**

a—Join center front seam at front facing below small \*. Join front facing to back facing  $\frac{1}{2}$ " from center front. Slip-stitch remaining unattached edges, clipping corners, or finish with seam binding. With RIGHT sides together, join facings to upper and back opening edges of dress. Trim seam, clipping  $\frac{1}{2}$ " from center front. Clip dress at center front to stitching.



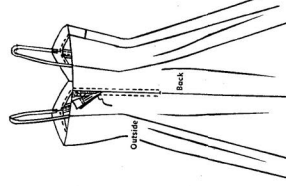
b.



b—Turn facings to INSIDE; baste. Baste under remaining seam allowance on back opening edges. Press facings to seams. Pin shoulder strap to front at side front opening edge. Hand sew securely to upper edge of front.

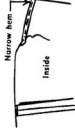
**5. BACK OPENING**

Place back opening edges over closed zipper, placing lower end of zipper at lower end of opening and having edges meeting at center of zipper. Baste on each side of opening  $\frac{1}{2}$ " from zipper end. Stitch at basting using a cording foot. Sew a hook and eye at upper edge.



**6. FINAL FITTING AND HEM**

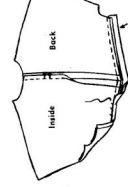
Mark the length of the dress, using a hem marker or a yardstick. Turn up lower edge; baste. Mark the depth of the hem and trim evenly. Slip-stitch in place, easing in fullness. Press dress thoroughly.



**BOLERO—VERSION A**

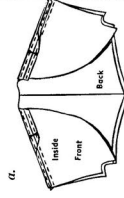
**7. CENTER BACK SEAM AND LOWER EDGE**

Join center back seam. With RIGHT sides together, join a bias binding strip to lower edge of back in a  $\frac{1}{4}$ " seam. Turn bias to INSIDE. Slip-stitch  $\frac{1}{2}$ " from raw edge and slip-stitch in place over seam.

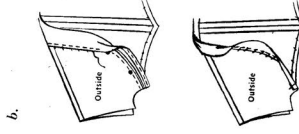


**8. SEAMS AND COLLAR**

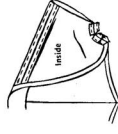
a—Join shoulder seam. Stitch under raw edges of seam allowance.



b—Join RIGHT side of collar to WRONG side of dress  $\frac{1}{2}$ ". Slip-stitch  $\frac{1}{2}$ " from sides back and stretching collar to fit between small \*. Clip curves. Baste under  $\frac{1}{2}$ " on remaining long edge of collar. Slip-stitch basted edge in place over seam on collar. Slip-stitch under upper seam at lower edge and baste.



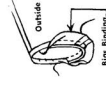
c.



c—Join underarm seam. Clip curve. Stitch under raw edge of seam allowance, turning under seam allowance originally at lower edge as shown. Slip-stitch diagonal corners in place.

**9. LOWER EDGE OF SLEEVE**

With RIGHT sides together, join a bias binding strip to lower edge of sleeve in a  $\frac{3}{8}$ " seam, joining ends of bias at underarm seam. Trim seam to within  $\frac{1}{4}$ " of stitching. Turn bias to INSIDE. Slip-stitch under  $\frac{1}{4}$ " on raw edge and slip-stitch in place over seam.

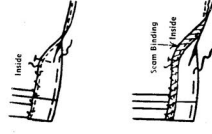


**DRESS—VERSION B**

Make same as Version A, using the following hem instructions:

**10. HEM**

Mark the length of the dress, using a hem marker or a yardstick. Turn up lower edge; baste. Mark the depth of the hem and trim evenly. Stitch under raw edge or finish with fabric binding. Slip-stitch in place, easing in fullness. Press dress thoroughly.



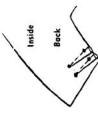
**BELT**

If desired, a ribbon belt may be used.

**BOLERO—VERSION B**

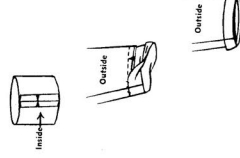
**11. DARTS**

Make darts at back elbow. Press darts down. Make remaining bulges same as Version A, following Steps 7 and 8. Use the following cuff instructions:



**12. CUFF**

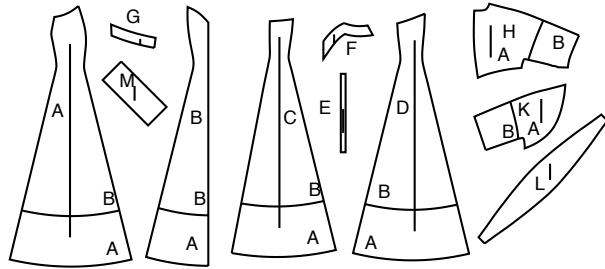
Join ends of cuff. Join RIGHT side of cuff to remaining side of sleeve, matching underarm seam. Press. Turn under raw edge of cuff, allowing seam allowance on remaining edge of cuff. Slip-stitch basted edge in place over seam on OUTSIDE. Roll cuff up over seam.





Thank you for purchasing this Simplicity pattern. We made every effort to provide you with a high quality product.

11 PIECES



- A Dress Side Front
- B Dress Front
- C Dress Back
- D Dress Side Back
- E Shoulder Strap
- F Dress Front Facing
- G Dress Back Facing
- H Bolero and Sleeve Back
- K Bolero and Sleeve Front
- L Bolero Collar
- M Bolero Cuff

### General Directions

#### The Pattern

- SYMBOLS**
- ↔ GRAIN LINE Place on straight grain of fabric parallel to selvage
  - ⇄ PLACE SOLID LINE on fold of fabric.
  - CENTER FRONT OR BACK of garment.
  - ▽▽▽ NOTCHES
  - ○ DOTS
  - CUTTING LINE
  - == LENGTHEN OR SHORTEN LINES

SEAM ALLOWANCE: 5/8" (1.5cm) unless otherwise stated is included but not printed on MULTI-SIZE PATTERNS. Mark your size with colored felt tip pen. See chart on tissue for how to use MULTI-SIZE PATTERNS.

#### ADJUST IF NEEDED

Make adjustments before placing pattern on fabric.

**TO LENGTHEN:**  
Cut pattern between lengthen or shorten lines. Spread pattern evenly, the amount needed and tape to paper.

**TO SHORTEN:**  
At lengthen or shorten lines, make an even pleat taking up amount needed. Tape in place.

When lengthen or shorten lines are not given, make adjustments at lower edge of pattern.

#### Cutting/Marking

##### BEFORE CUTTING:

PRESS pattern pieces with a warm dry iron. PRE-SHRINK fabric by pre-washing washables or steam-pressing non-washables.

CIRCLE your cutting layout.

PIN pattern to fabric as shown in Cutting Layouts.

• FOR DOUBLE THICKNESS: Fold fabric with RIGHT sides together.

• FOR SINGLE THICKNESS: Place fabric RIGHT side up.

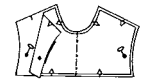
• FOR PILE, SHADED OR ONE WAY DESIGN FABRICS: Use "with nap" layouts

##### AFTER CUTTING:

Transfer markings to WRONG side of fabric before removing pattern. Use pin and chalk method or dressmaker's tracing paper and wheel.

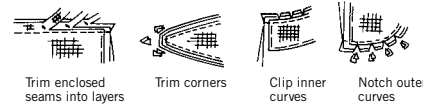
##### To Quick Mark:

- Snip edge of fabric to mark notches, ends of fold lines and center lines.
- Pin mark dots.



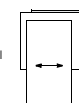
#### Sewing

- SEW garment following Sewing Directions.
- PIN or machine-baste seams matching notches.
- STITCH 5/8" (1.5 cm) seams unless otherwise stated.
- PRESS seams open unless otherwise indicated clipping when necessary so seams will lie flat.
- TRIM seams to reduce bulk, as shown below.



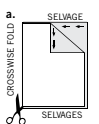
#### SPECIAL CUTTING NOTES

★ If layout shows a piece extending past fold, cut out all pieces except piece that extends.

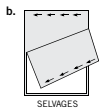


Open out fabric to single thickness. Cut extending piece on RIGHT side of fabric in position shown.

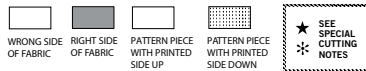
✳ Mark small arrows along both selvages indicating direction of nap or design. Fold fabric crosswise with RIGHT sides together, and cut along fold (a).



Turn one fabric layer around so arrows on both layers go in the same direction. Place RIGHT sides together (b).



### Cutting Layouts



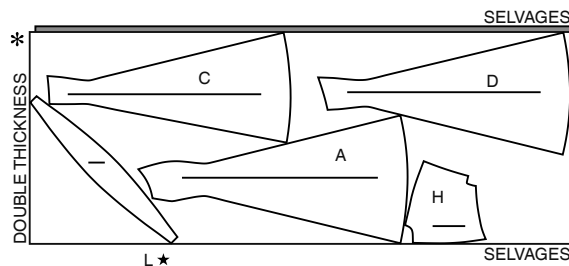
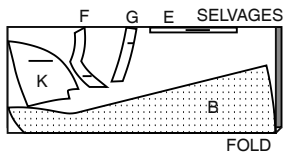
POSITION OF PATTERN PIECES MAY VARY SLIGHTLY ACCORDING TO YOUR PATTERN SIZE

### DRESS AND BOLERO A

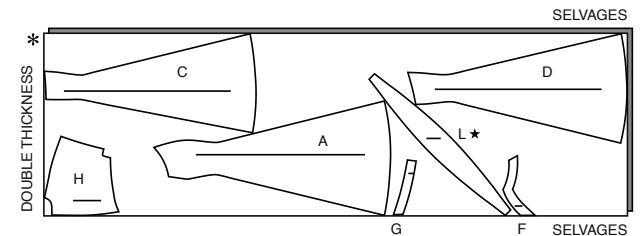
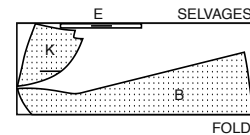
USE PIECES A B C D E F G H K L

PIECE L IS CUT ONE

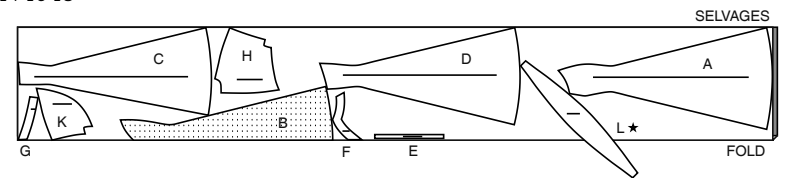
45" (115CM) WITH NAP  
SIZES 8 10 12 14 16 18



45" (115CM)  
WITH NAP  
SIZES 20 22 24 26



60" (150CM)  
WITH NAP  
SIZES 8 10 12 14 16 18

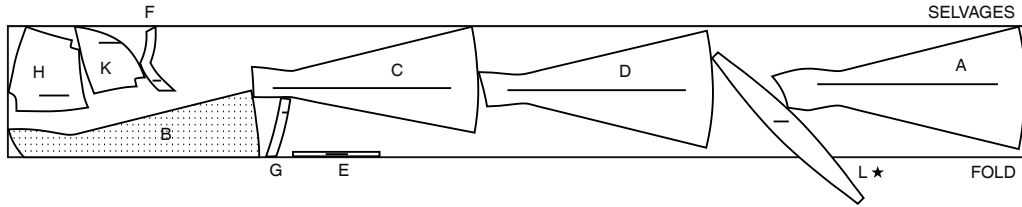


CUTTING LAYOUTS CONTINUED ON PAGE 2

# S3082

4 of 4

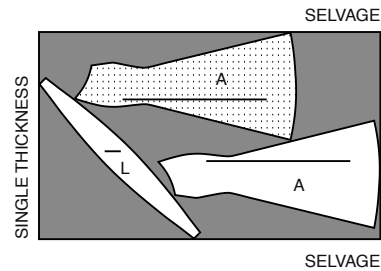
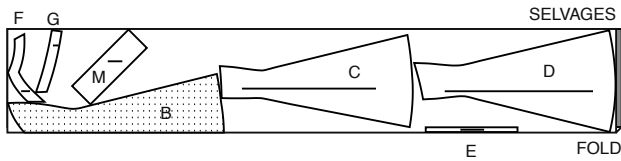
60" (150CM)  
WITH NAP  
SIZES 20 22 24 26



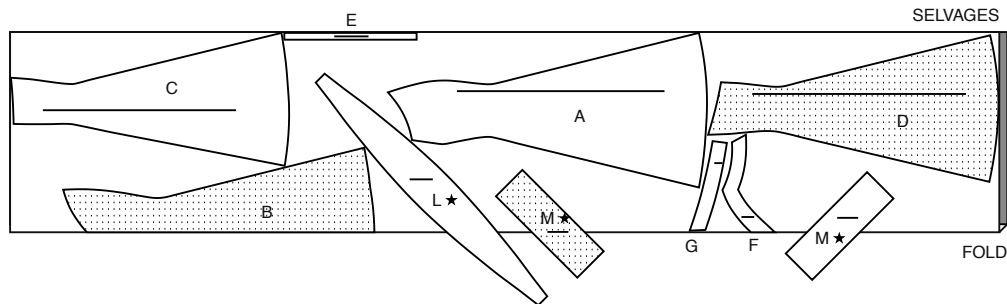
## DRESS B, BOLERO COLLAR AND CUFFS

USE PIECES A B C D E F G L M

45" (115CM)  
WITH NAP  
ALL SIZES



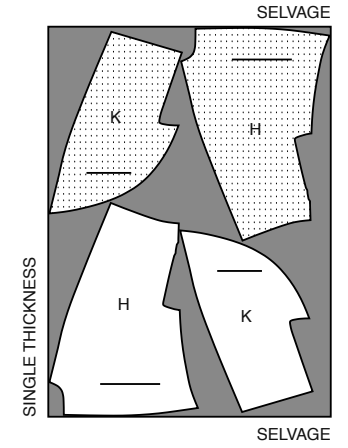
60" (150CM)  
WITH NAP  
ALL SIZES



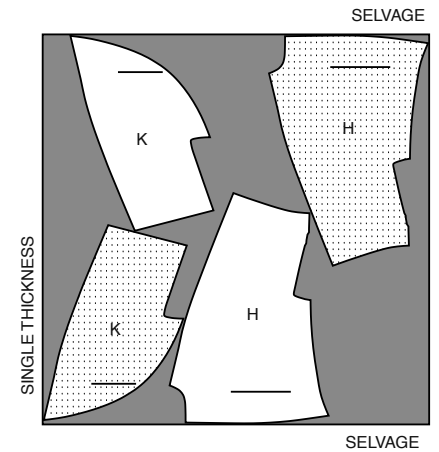
## CONTRAST B, BOLERO

USE PIECES H K

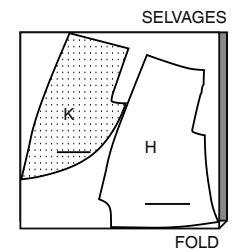
45" (115CM)  
WITH NAP  
SIZES 8 10 12 14 16 18



45" (115CM)  
WITH NAP  
SIZES 20 22 24 26



60" (150CM)  
WITH NAP  
ALL SIZES





# Congrats!

You've completed your sewing adventure

---

## SHARE YOUR LOOK



Post your pattern and tag us using [#simplicitypatterns](#)  
[@simplicity creative group](#)  
[@simplicitymccallsuk](#)  
[@simplicitymccallsaustralia](#)  
for a chance to be featured on our social media.

Look for more PDF patterns at [simplicity.com](#) or for customers outside the U.S. and Canada visit [sewdirect.com](#) and [sewdirect.com.au](#)

Have a question or need help with your sewing project contact us:  
[Simplicity.com](#)   [Sewdirect.com](#)   [Sewdirect.com.au](#)



Simplicity ©2024 a division of IG Design Group Americas Inc. • Atlanta, GA 30342 USA [www.thedesigngroup.com](#) • All Rights Reserved. [www.simplicity.com](#) • Made in the U.S.A. Fabriqué aux États-Unis.

To be used for individual private home use only and not for commercial or manufacturing purposes. • A usage privé seulement et non à des fins commerciales ou de production en série. • Para uso privado solamente, no se puede utilizar con propósitos de comercialización o de producción en serie.